



Full wwPDB X-ray Structure Validation Report ⓘ

Feb 1, 2016 – 01:38 PM GMT

PDB ID : 3UGH
Title : Crystal structure of a 6-SST/6-SFT from *Pachysandra terminalis* in complex with 6-kestose
Authors : Lammens, W.; Rabijns, A.; Van Laere, A.; Strelkov, S.V.; Van den Ende, W.
Deposited on : 2011-11-02
Resolution : 2.90 Å(reported)

This is a Full wwPDB X-ray Structure Validation Report for a publicly released PDB entry.
We welcome your comments at validation@mail.wwpdb.org
A user guide is available at
<http://wwpdb.org/validation/2016/XrayValidationReportHelp>
with specific help available everywhere you see the ⓘ symbol.

The following versions of software and data (see [references ⓘ](#)) were used in the production of this report:

MolProbity : 4.02b-467
Mogul : 1.7 (RC4), CSD as536be (2015)
Xtriage (Phenix) : 1.9-1692
EDS : rb-20026688
Percentile statistics : 20151230.v01 (using entries in the PDB archive December 30th 2015)
Refmac : 5.8.0135
CCP4 : 6.5.0
Ideal geometry (proteins) : Engh & Huber (2001)
Ideal geometry (DNA, RNA) : Parkinson et al. (1996)
Validation Pipeline (wwPDB-VP) : trunk26865

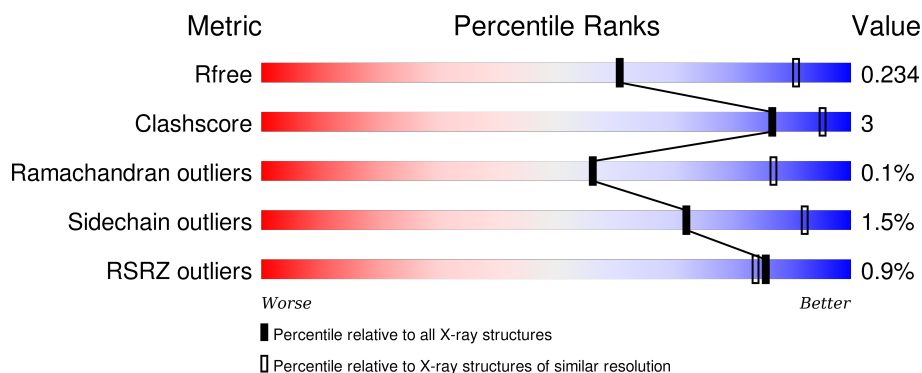
1 Overall quality at a glance ⓘ

The following experimental techniques were used to determine the structure:

X-RAY DIFFRACTION

The reported resolution of this entry is 2.90 Å.

Percentile scores (ranging between 0-100) for global validation metrics of the entry are shown in the following graphic. The table shows the number of entries on which the scores are based.



Metric	Whole archive (#Entries)	Similar resolution (#Entries, resolution range(Å))
R_{free}	91344	1451 (2.90-2.90)
Clashscore	102246	1668 (2.90-2.90)
Ramachandran outliers	100387	1630 (2.90-2.90)
Sidechain outliers	100360	1632 (2.90-2.90)
RSRZ outliers	91569	1456 (2.90-2.90)

The table below summarises the geometric issues observed across the polymeric chains and their fit to the electron density. The red, orange, yellow and green segments on the lower bar indicate the fraction of residues that contain outliers for ≥ 3 , 2, 1 and 0 types of geometric quality criteria. A grey segment represents the fraction of residues that are not modelled. The numeric value for each fraction is indicated below the corresponding segment, with a dot representing fractions $\leq 5\%$. The upper red bar (where present) indicates the fraction of residues that have poor fit to the electron density. The numeric value is given above the bar.

Mol	Chain	Length	Quality of chain
1	A	546	<div> <div style="width: 100%; height: 10px; background: linear-gradient(to right, red 1%, orange 1%, yellow 88%, green 8%, grey 5%);"></div> <div style="display: flex; justify-content: space-between; width: 100%;"> % 88% 8% . </div> </div>
1	B	546	<div> <div style="width: 100%; height: 10px; background: linear-gradient(to right, red 1%, orange 1%, yellow 89%, green 7%, grey 4%);"></div> <div style="display: flex; justify-content: space-between; width: 100%;"> % 89% 7% . </div> </div>

The following table lists non-polymeric compounds, carbohydrate monomers and non-standard residues in protein, DNA, RNA chains that are outliers for geometric or electron-density-fit criteria:

Mol	Type	Chain	Res	Chirality	Geometry	Clashes	Electron density
2	045	B	691	-	-	-	X
3	NAG	A	547	-	-	-	X
9	GOL	A	562	-	-	-	X
9	GOL	B	564	-	-	X	X

In the tables below, the ZeroOcc column contains the number of atoms modelled with zero occupancy, the AltConf column contains the number of residues with at least one atom in alternate conformation and the Trace column contains the number of residues modelled with at most 2 atoms.

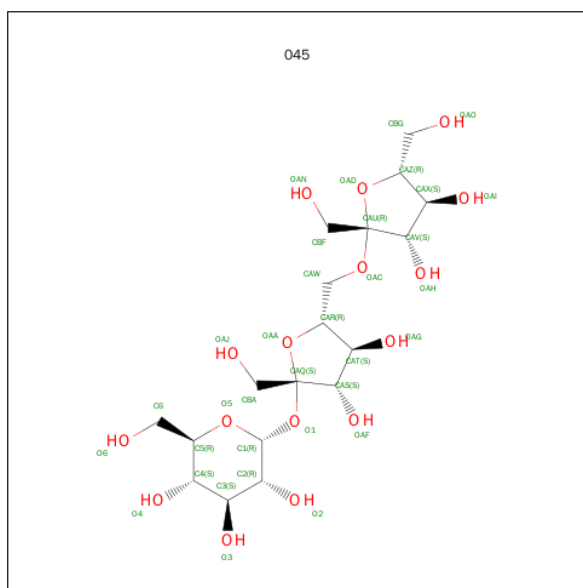
- Molecule 1 is a protein called Sucrose:(Sucrose/fructan) 6-fructosyltransferase.

Mol	Chain	Residues	Atoms					ZeroOcc	AltConf	Trace
1	A	524	Total 4164	C 2687	N 679	O 784	S 14	0	0	0
1	B	524	Total 4164	C 2687	N 679	O 784	S 14	0	0	0

There are 4 discrepancies between the modelled and reference sequences:

Chain	Residue	Modelled	Actual	Comment	Reference
A	133	VAL	ALA	SEE REMARK 999	UNP E3PQS3
A	361	GLY	ARG	SEE REMARK 999	UNP E3PQS3
B	133	VAL	ALA	SEE REMARK 999	UNP E3PQS3
B	361	GLY	ARG	SEE REMARK 999	UNP E3PQS3

- Molecule 2 is SUGAR (BETA-D-FRUCTOFURANOSYL-(2->6)-BETA-D-FRUCTOFURANOSYL ALPHA-D-GLUCOPYRANOSIDE) (three-letter code: 045) (formula: $C_{18}H_{32}O_{16}$).



Mol	Chain	Residues	Atoms			ZeroOcc	AltConf
2	B	1	Total	C	O	0	0
			34	18	16		

- Molecule 3 is SUGAR (N-ACETYL-D-GLUCOSAMINE) (three-letter code: NAG) (formula: $C_8H_{15}NO_6$).



Mol	Chain	Residues	Atoms				ZeroOcc	AltConf
3	A	1	Total	C	N	O	0	0
			14	8	1	5		

- Molecule 4 is a polymer of unknown type called SUGAR (3-MER).

Mol	Chain	Residues	Atoms				ZeroOcc	AltConf
4	B	3	Total	C	N	O	0	0
			39	22	2	15		
4	A	3	Total	C	N	O	0	0
			39	22	2	15		

- Molecule 5 is a polymer of unknown type called SUGAR (3-MER).

Mol	Chain	Residues	Atoms				ZeroOcc	AltConf
5	A	3	Total	C	N	O	0	0
			38	22	2	14		
5	B	3	Total	C	N	O	0	0
			38	22	2	14		

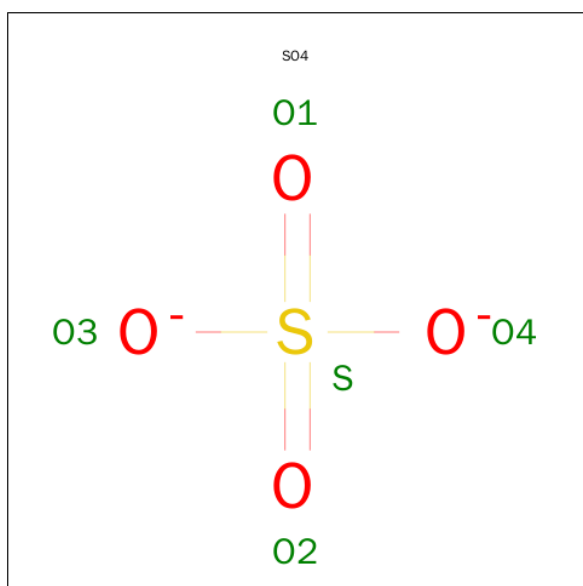
- Molecule 6 is a polymer of unknown type called SUGAR (5-MER).

Mol	Chain	Residues	Atoms				ZeroOcc	AltConf
6	B	5	Total	C	N	O	0	0
			60	34	2	24		
6	B	5	Total	C	N	O	0	0
			60	34	2	24		

- Molecule 7 is a polymer of unknown type called SUGAR (7-MER).

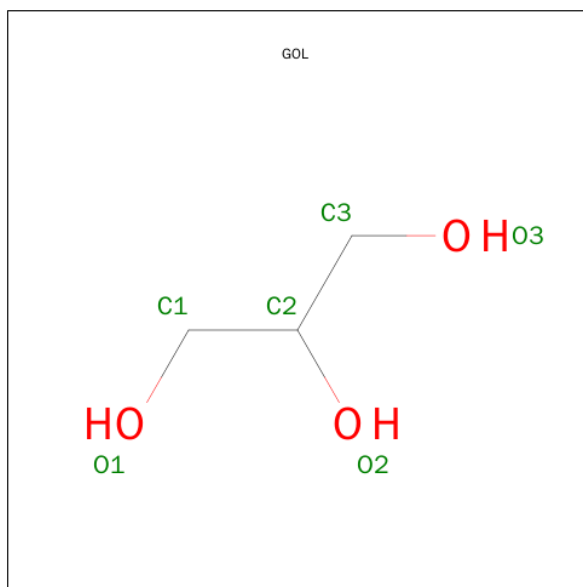
Mol	Chain	Residues	Atoms				ZeroOcc	AltConf
7	A	7	Total	C	N	O	0	0
			80	45	2	33		

- Molecule 8 is SULFATE ION (three-letter code: SO4) (formula: O₄S).



Mol	Chain	Residues	Atoms			ZeroOcc	AltConf
8	B	1	Total	O	S	0	0
			5	4	1		
8	A	1	Total	O	S	0	0
			5	4	1		

- Molecule 9 is GLYCEROL (three-letter code: GOL) (formula: C₃H₈O₃).

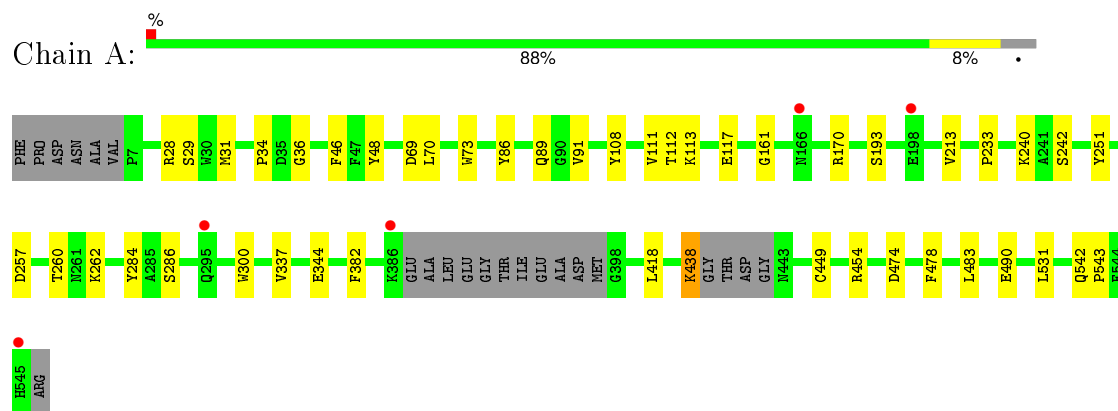


Mol	Chain	Residues	Atoms			ZeroOcc	AltConf
9	B	1	Total	C	O	0	0
			6	3	3		
9	A	1	Total	C	O	0	0
			6	3	3		

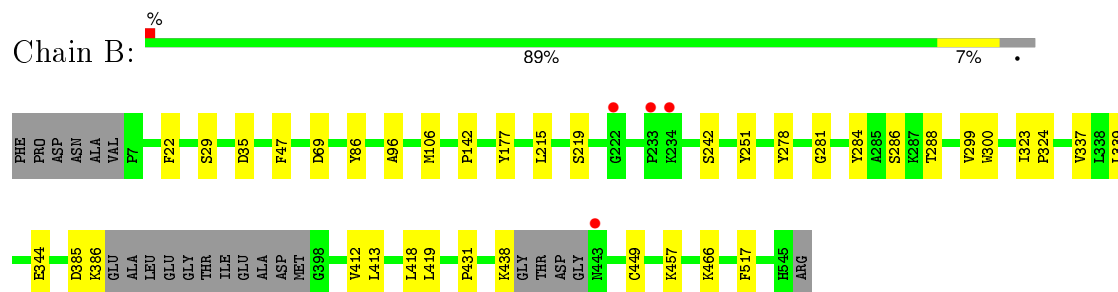
3 Residue-property plots [i](#)

These plots are drawn for all protein, RNA and DNA chains in the entry. The first graphic for a chain summarises the proportions of errors displayed in the second graphic. The second graphic shows the sequence view annotated by issues in geometry and electron density. Residues are color-coded according to the number of geometric quality criteria for which they contain at least one outlier: green = 0, yellow = 1, orange = 2 and red = 3 or more. A red dot above a residue indicates a poor fit to the electron density ($\text{RSRZ} > 2$). Stretches of 2 or more consecutive residues without any outlier are shown as a green connector. Residues present in the sample, but not in the model, are shown in grey.

- Molecule 1: Sucrose:(Sucrose/fructan) 6-fructosyltransferase



- Molecule 1: Sucrose:(Sucrose/fructan) 6-fructosyltransferase



4 Data and refinement statistics

Property	Value	Source
Space group	P 21 21 21	Depositor
Cell constants a, b, c, α , β , γ	88.29Å 123.89Å 146.70Å 90.00° 90.00° 90.00°	Depositor
Resolution (Å)	29.71 – 2.90 29.71 – 2.89	Depositor EDS
% Data completeness (in resolution range)	99.6 (29.71-2.90) 99.6 (29.71-2.89)	Depositor EDS
R_{merge}	0.19	Depositor
R_{sym}	(Not available)	Depositor
$\langle I/\sigma(I) \rangle$ ¹	2.59 (at 2.90Å)	Xtriage
Refinement program	REFMAC 5.5.0102	Depositor
R, R_{free}	0.197 , 0.240 0.195 , 0.234	Depositor DCC
R_{free} test set	1811 reflections (5.24%)	DCC
Wilson B-factor (Å ²)	26.4	Xtriage
Anisotropy	0.010	Xtriage
Bulk solvent k_{sol} (e/Å ³), B_{sol} (Å ²)	0.35 , 17.0	EDS
Estimated twinning fraction	No twinning to report.	Xtriage
L-test for twinning ²	$\langle L \rangle = 0.50$, $\langle L^2 \rangle = 0.33$	Xtriage
Outliers	0 of 36716 reflections	Xtriage
F_o, F_c correlation	0.91	EDS
Total number of atoms	8752	wwPDB-VP
Average B, all atoms (Å ²)	20.0	wwPDB-VP

Xtriage's analysis on translational NCS is as follows: *The largest off-origin peak in the Patterson function is 3.08% of the height of the origin peak. No significant pseudotranslation is detected.*

¹Intensities estimated from amplitudes.

²Theoretical values of $\langle |L| \rangle$, $\langle L^2 \rangle$ for acentric reflections are 0.5, 0.375 respectively for untwinned datasets, and 0.333, 0.2 for perfectly twinned datasets.

5 Model quality

5.1 Standard geometry

Bond lengths and bond angles in the following residue types are not validated in this section: GOL, BMA, NAG, XYS, FUC, 045, MAN, SO4

The Z score for a bond length (or angle) is the number of standard deviations the observed value is removed from the expected value. A bond length (or angle) with $|Z| > 5$ is considered an outlier worth inspection. RMSZ is the root-mean-square of all Z scores of the bond lengths (or angles).

Mol	Chain	Bond lengths		Bond angles	
		RMSZ	# Z >5	RMSZ	# Z >5
1	A	0.38	0/4287	0.53	0/5841
1	B	0.37	0/4287	0.53	0/5841
All	All	0.37	0/8574	0.53	0/11682

There are no bond length outliers.

There are no bond angle outliers.

There are no chirality outliers.

There are no planarity outliers.

5.2 Too-close contacts

In the following table, the Non-H and H(model) columns list the number of non-hydrogen atoms and hydrogen atoms in the chain respectively. The H(added) column lists the number of hydrogen atoms added and optimized by MolProbity. The Clashes column lists the number of clashes within the asymmetric unit, whereas Symm-Clashes lists symmetry related clashes.

Mol	Chain	Non-H	H(model)	H(added)	Clashes	Symm-Clashes
1	A	4164	0	4021	26	0
1	B	4164	0	4021	20	0
2	B	34	0	32	0	0
3	A	14	0	13	0	0
4	A	39	0	34	2	0
4	B	39	0	34	0	0
5	A	38	0	34	0	0
5	B	38	0	34	0	0
6	B	120	0	104	1	0
7	A	80	0	68	0	0
8	A	5	0	0	0	0

Continued on next page...

Continued from previous page...

Mol	Chain	Non-H	H(model)	H(added)	Clashes	Symm-Clashes
8	B	5	0	0	0	0
9	A	6	0	8	3	0
9	B	6	0	8	4	0
All	All	8752	0	8411	47	0

The all-atom clashscore is defined as the number of clashes found per 1000 atoms (including hydrogen atoms). The all-atom clashscore for this structure is 3.

All (47) close contacts within the same asymmetric unit are listed below, sorted by their clash magnitude.

Atom-1	Atom-2	Interatomic distance (Å)	Clash overlap (Å)
1:A:257:ASP:HB3	1:A:260:THR:HG22	1.58	0.85
1:A:454:ARG:HH12	4:A:551:NAG:H82	1.44	0.81
4:A:552:NAG:H4	4:A:553:BMA:O2	1.84	0.77
1:B:385:ASP:O	1:B:386:LYS:HB2	1.85	0.75
1:A:89:GLN:HG3	1:A:113:LYS:HA	1.74	0.69
1:A:257:ASP:HB3	1:A:260:THR:CG2	2.26	0.65
1:A:73:TRP:CD1	9:A:562:GOL:H32	2.32	0.64
1:B:323:ILE:HA	9:B:564:GOL:H32	1.82	0.60
1:B:323:ILE:HD13	9:B:564:GOL:H31	1.83	0.60
1:A:418:LEU:HD21	1:A:531:LEU:HD21	1.82	0.59
1:A:73:TRP:HD1	9:A:562:GOL:H32	1.69	0.57
1:A:89:GLN:CG	1:A:113:LYS:HA	2.35	0.57
1:B:22:PHE:O	9:B:564:GOL:H11	2.06	0.55
1:A:382:PHE:HB2	1:A:478:PHE:HB2	1.90	0.54
1:A:251:TYR:CZ	1:A:337:VAL:HG22	2.44	0.53
1:A:91:VAL:HG13	1:A:108:TYR:CD2	2.43	0.53
1:A:438:LYS:HD3	1:A:438:LYS:H	1.74	0.52
1:B:419:LEU:HB2	1:B:517:PHE:HB2	1.96	0.48
1:B:324:PRO:HD3	9:B:564:GOL:H32	1.97	0.47
1:B:86:TYR:HB2	1:B:142:PRO:HG3	1.98	0.46
1:A:161:GLY:HA2	1:A:170:ARG:O	2.15	0.46
1:B:69:ASP:HB2	1:B:344:GLU:HG2	1.97	0.46
1:A:31:MET:HG3	1:A:48:TYR:CD2	2.50	0.46
1:A:111:VAL:HG22	1:A:117:GLU:HG2	1.98	0.45
1:A:286:SER:HA	1:A:300:TRP:O	2.17	0.45
1:A:70:LEU:O	9:A:562:GOL:O2	2.36	0.44
1:B:251:TYR:CZ	1:B:337:VAL:HG22	2.53	0.43
1:A:483:LEU:HB2	1:A:490:GLU:HB2	2.00	0.43
1:A:69:ASP:HB2	1:A:344:GLU:HG2	2.01	0.43
1:A:260:THR:HG23	1:A:262:LYS:H	1.84	0.42

Continued on next page...

Continued from previous page...

Atom-1	Atom-2	Interatomic distance (Å)	Clash overlap (Å)
1:A:542:GLN:HG2	1:A:543:PRO:HD2	2.00	0.42
1:A:34:PRO:HB3	1:A:46:PHE:HE2	1.83	0.42
1:B:418:LEU:O	1:B:431:PRO:HA	2.19	0.42
1:B:242:SER:HB3	1:B:284:TYR:CE1	2.55	0.42
1:B:86:TYR:CB	1:B:142:PRO:HG3	2.50	0.42
1:B:278:TYR:HB3	1:B:339:LEU:HD11	2.02	0.42
1:A:86:TYR:HA	1:A:112:THR:HG22	2.02	0.42
1:B:281:GLY:HA2	1:B:466:LYS:HD3	2.02	0.41
1:B:286:SER:HA	1:B:300:TRP:O	2.19	0.41
1:A:242:SER:HB3	1:A:284:TYR:CZ	2.55	0.41
1:B:96:ALA:HB2	1:B:106:MET:SD	2.61	0.41
1:B:35:ASP:O	1:B:47:PHE:HB2	2.21	0.41
1:B:412:VAL:HG12	1:B:413:LEU:HG	2.02	0.41
1:B:177:TYR:HB3	6:B:553:NAG:H82	2.02	0.41
1:B:288:THR:HG22	1:B:299:VAL:HB	2.02	0.40
1:A:257:ASP:CB	1:A:260:THR:HG22	2.38	0.40
1:A:213:VAL:HA	1:A:240:LYS:O	2.21	0.40

There are no symmetry-related clashes.

5.3 Torsion angles ⓘ

5.3.1 Protein backbone ⓘ

In the following table, the Percentiles column shows the percent Ramachandran outliers of the chain as a percentile score with respect to all X-ray entries followed by that with respect to entries of similar resolution.

The Analysed column shows the number of residues for which the backbone conformation was analysed, and the total number of residues.

Mol	Chain	Analysed	Favoured	Allowed	Outliers	Percentiles	
1	A	518/546 (95%)	488 (94%)	29 (6%)	1 (0%)	52	84
1	B	518/546 (95%)	490 (95%)	28 (5%)	0	100	100
All	All	1036/1092 (95%)	978 (94%)	57 (6%)	1 (0%)	56	87

All (1) Ramachandran outliers are listed below:

Mol	Chain	Res	Type
1	A	36	GLY

5.3.2 Protein sidechains ⓘ

In the following table, the Percentiles column shows the percent sidechain outliers of the chain as a percentile score with respect to all X-ray entries followed by that with respect to entries of similar resolution.

The Analysed column shows the number of residues for which the sidechain conformation was analysed, and the total number of residues.

Mol	Chain	Analysed	Rotameric	Outliers	Percentiles	
1	A	447/463 (96%)	440 (98%)	7 (2%)	70	91
1	B	447/463 (96%)	441 (99%)	6 (1%)	76	94
All	All	894/926 (96%)	881 (98%)	13 (2%)	72	92

All (13) residues with a non-rotameric sidechain are listed below:

Mol	Chain	Res	Type
1	A	28	ARG
1	A	29	SER
1	A	193	SER
1	A	233	PRO
1	A	438	LYS
1	A	449	CYS
1	A	474	ASP
1	B	29	SER
1	B	215	LEU
1	B	219	SER
1	B	438	LYS
1	B	449	CYS
1	B	457	LYS

Some sidechains can be flipped to improve hydrogen bonding and reduce clashes. There are no such sidechains identified.

5.3.3 RNA ⓘ

There are no RNA molecules in this entry.

5.4 Non-standard residues in protein, DNA, RNA chains ⓘ

There are no non-standard protein/DNA/RNA residues in this entry.

5.5 Carbohydrates ⓘ

29 carbohydrates are modelled in this entry.

In the following table, the Counts columns list the number of bonds (or angles) for which Mogul statistics could be retrieved, the number of bonds (or angles) that are observed in the model and the number of bonds (or angles) that are defined in the chemical component dictionary. The Link column lists molecule types, if any, to which the group is linked. The Z score for a bond length (or angle) is the number of standard deviations the observed value is removed from the expected value. A bond length (or angle) with $|Z| > 2$ is considered an outlier worth inspection. RMSZ is the root-mean-square of all Z scores of the bond lengths (or angles).

Mol	Type	Chain	Res	Link	Bond lengths			Bond angles		
					Counts	RMSZ	# $ Z > 2$	Counts	RMSZ	# $ Z > 2$
5	NAG	A	548	1,5	14,14,15	0.58	0	15,19,21	1.20	1 (6%)
5	NAG	A	549	5	14,14,15	0.51	0	15,19,21	0.82	0
5	FUC	A	550	5	10,10,11	0.45	0	14,14,16	0.87	2 (14%)
4	NAG	A	551	1,4	14,14,15	0.50	0	15,19,21	1.08	0
4	NAG	A	552	4	14,14,15	0.59	0	15,19,21	1.03	1 (6%)
4	BMA	A	553	4	11,11,12	0.53	0	14,15,17	1.29	2 (14%)
7	NAG	A	554	1,7	14,14,15	0.45	0	15,19,21	1.08	1 (6%)
7	NAG	A	555	7	14,14,15	0.49	0	15,19,21	1.19	4 (26%)
7	BMA	A	556	7	11,11,12	0.65	0	14,15,17	0.91	1 (7%)
7	MAN	A	557	7	11,11,12	0.69	0	14,15,17	1.58	3 (21%)
7	FUC	A	558	7	10,10,11	0.49	0	14,14,16	1.32	1 (7%)
7	XYS	A	559	7	9,9,10	1.01	1 (11%)	12,12,14	1.52	3 (25%)
7	MAN	A	560	7	11,11,12	0.66	0	14,15,17	1.14	1 (7%)
4	NAG	B	547	1,4	14,14,15	0.56	0	15,19,21	0.61	0
4	NAG	B	548	4	14,14,15	0.56	0	15,19,21	1.02	1 (6%)
4	BMA	B	549	4	11,11,12	0.46	0	14,15,17	0.90	1 (7%)
5	NAG	B	550	1,5	14,14,15	0.51	0	15,19,21	0.92	0
5	NAG	B	551	5	14,14,15	0.47	0	15,19,21	1.07	1 (6%)
5	FUC	B	552	5	10,10,11	0.52	0	14,14,16	0.98	0
6	NAG	B	553	1,6	14,14,15	0.46	0	15,19,21	1.05	1 (6%)
6	NAG	B	554	6	14,14,15	0.57	0	15,19,21	0.92	0
6	BMA	B	555	6	11,11,12	0.55	0	14,15,17	0.76	0
6	MAN	B	556	6	11,11,12	0.59	0	14,15,17	1.45	2 (14%)
6	FUC	B	557	6	10,10,11	0.45	0	14,14,16	0.89	0
6	NAG	B	558	1,6	14,14,15	0.46	0	15,19,21	1.23	1 (6%)
6	NAG	B	559	6	14,14,15	0.56	0	15,19,21	1.34	2 (13%)
6	BMA	B	560	6	11,11,12	0.70	0	14,15,17	1.33	2 (14%)

Mol	Type	Chain	Res	Link	Bond lengths			Bond angles		
					Counts	RMSZ	# Z > 2	Counts	RMSZ	# Z > 2
6	MAN	B	561	6	11,11,12	0.57	0	14,15,17	1.35	2 (14%)
6	FUC	B	562	6	10,10,11	0.51	0	14,14,16	1.10	2 (14%)

In the following table, the Chirals column lists the number of chiral outliers, the number of chiral centers analysed, the number of these observed in the model and the number defined in the chemical component dictionary. Similar counts are reported in the Torsion and Rings columns. '-' means no outliers of that kind were identified.

Mol	Type	Chain	Res	Link	Chirals	Torsions	Rings
5	NAG	A	548	1,5	-	0/6/23/26	0/1/1/1
5	NAG	A	549	5	-	0/6/23/26	0/1/1/1
5	FUC	A	550	5	-	0/0/17/20	0/1/1/1
4	NAG	A	551	1,4	-	0/6/23/26	0/1/1/1
4	NAG	A	552	4	-	0/6/23/26	0/1/1/1
4	BMA	A	553	4	-	0/2/19/22	0/1/1/1
7	NAG	A	554	1,7	-	0/6/23/26	0/1/1/1
7	NAG	A	555	7	-	0/6/23/26	0/1/1/1
7	BMA	A	556	7	-	0/2/19/22	0/1/1/1
7	MAN	A	557	7	-	0/2/19/22	0/1/1/1
7	FUC	A	558	7	-	0/0/17/20	0/1/1/1
7	XYS	A	559	7	-	0/0/14/17	0/1/1/1
7	MAN	A	560	7	-	0/2/19/22	0/1/1/1
4	NAG	B	547	1,4	-	0/6/23/26	0/1/1/1
4	NAG	B	548	4	-	0/6/23/26	0/1/1/1
4	BMA	B	549	4	-	0/2/19/22	0/1/1/1
5	NAG	B	550	1,5	-	0/6/23/26	0/1/1/1
5	NAG	B	551	5	-	0/6/23/26	0/1/1/1
5	FUC	B	552	5	-	0/0/17/20	0/1/1/1
6	NAG	B	553	1,6	-	0/6/23/26	0/1/1/1
6	NAG	B	554	6	-	0/6/23/26	0/1/1/1
6	BMA	B	555	6	-	0/2/19/22	0/1/1/1
6	MAN	B	556	6	-	0/2/19/22	0/1/1/1
6	FUC	B	557	6	-	0/0/17/20	0/1/1/1
6	NAG	B	558	1,6	-	0/6/23/26	0/1/1/1
6	NAG	B	559	6	-	0/6/23/26	0/1/1/1
6	BMA	B	560	6	-	0/2/19/22	0/1/1/1
6	MAN	B	561	6	-	0/2/19/22	0/1/1/1
6	FUC	B	562	6	-	0/0/17/20	0/1/1/1

All (1) bond length outliers are listed below:

Mol	Chain	Res	Type	Atoms	Z	Observed(Å)	Ideal(Å)
7	A	559	XYS	O5-C1	-2.61	1.37	1.42

All (35) bond angle outliers are listed below:

Mol	Chain	Res	Type	Atoms	Z	Observed(°)	Ideal(°)
6	B	559	NAG	O4-C4-C3	-2.34	105.06	110.34
7	A	555	NAG	O7-C7-C8	-2.24	117.95	122.06
6	B	561	MAN	C1-C2-C3	2.04	111.95	109.54
5	A	550	FUC	O5-C5-C6	2.05	109.51	106.13
7	A	559	XYS	O5-C1-C2	2.12	114.26	110.31
7	A	559	XYS	C1-C2-C3	2.12	112.05	109.54
5	A	550	FUC	C1-O5-C5	2.13	115.67	112.38
7	A	555	NAG	C2-N2-C7	2.14	125.79	123.04
6	B	562	FUC	C1-O5-C5	2.16	115.71	112.38
5	A	548	NAG	C4-C3-C2	2.17	114.60	111.23
6	B	553	NAG	C1-O5-C5	2.20	115.05	112.25
7	A	557	MAN	C2-C3-C4	2.21	114.79	111.04
7	A	555	NAG	C1-O5-C5	2.21	115.05	112.25
7	A	555	NAG	C8-C7-N2	2.23	120.37	116.11
7	A	556	BMA	C1-O5-C5	2.23	115.08	112.25
6	B	556	MAN	C1-C2-C3	2.24	112.19	109.54
7	A	557	MAN	C3-C4-C5	2.32	114.25	110.20
4	B	549	BMA	C1-C2-C3	2.44	112.42	109.54
6	B	560	BMA	O5-C5-C6	2.48	112.71	107.35
6	B	562	FUC	O5-C5-C6	2.50	110.27	106.13
7	A	558	FUC	C1-O5-C5	2.62	116.43	112.38
5	B	551	NAG	C1-O5-C5	2.64	115.60	112.25
4	B	548	NAG	C4-C3-C2	2.68	115.40	111.23
4	A	553	BMA	C1-O5-C5	2.84	115.85	112.25
7	A	560	MAN	C1-C2-C3	2.92	113.00	109.54
7	A	554	NAG	C1-O5-C5	2.97	116.02	112.25
4	A	552	NAG	C4-C3-C2	3.02	115.92	111.23
4	A	553	BMA	C1-C2-C3	3.04	113.13	109.54
6	B	560	BMA	C1-C2-C3	3.16	113.28	109.54
6	B	558	NAG	C1-O5-C5	3.60	116.82	112.25
6	B	559	NAG	C4-C3-C2	3.67	116.94	111.23
7	A	559	XYS	C5-O5-C1	3.81	117.72	111.57
6	B	561	MAN	C1-O5-C5	3.82	117.10	112.25
7	A	557	MAN	C1-C2-C3	4.11	114.40	109.54
6	B	556	MAN	C1-O5-C5	4.30	117.70	112.25

There are no chirality outliers.

There are no torsion outliers.

There are no ring outliers.

4 monomers are involved in 3 short contacts:

Mol	Chain	Res	Type	Clashes	Symm-Clashes
4	A	551	NAG	1	0
4	A	552	NAG	1	0
4	A	553	BMA	1	0
6	B	553	NAG	1	0

5.6 Ligand geometry

6 ligands are modelled in this entry.

In the following table, the Counts columns list the number of bonds (or angles) for which Mogul statistics could be retrieved, the number of bonds (or angles) that are observed in the model and the number of bonds (or angles) that are defined in the chemical component dictionary. The Link column lists molecule types, if any, to which the group is linked. The Z score for a bond length (or angle) is the number of standard deviations the observed value is removed from the expected value. A bond length (or angle) with $|Z| > 2$ is considered an outlier worth inspection. RMSZ is the root-mean-square of all Z scores of the bond lengths (or angles).

Mol	Type	Chain	Res	Link	Bond lengths			Bond angles		
					Counts	RMSZ	$\# Z > 2$	Counts	RMSZ	$\# Z > 2$
3	NAG	A	547	1	14,14,15	0.54	0	15,19,21	1.89	4 (26%)
8	SO4	A	561	-	4,4,4	0.26	0	6,6,6	0.09	0
9	GOL	A	562	-	5,5,5	0.38	0	5,5,5	0.24	0
8	SO4	B	563	-	4,4,4	0.21	0	6,6,6	0.13	0
9	GOL	B	564	-	5,5,5	0.39	0	5,5,5	0.19	0
2	045	B	691	-	36,36,36	0.50	0	54,55,55	1.07	3 (5%)

In the following table, the Chirals column lists the number of chiral outliers, the number of chiral centers analysed, the number of these observed in the model and the number defined in the chemical component dictionary. Similar counts are reported in the Torsion and Rings columns. '-' means no outliers of that kind were identified.

Mol	Type	Chain	Res	Link	Chirals	Torsions	Rings
3	NAG	A	547	1	-	0/6/23/26	0/1/1/1
8	SO4	A	561	-	-	0/0/0/0	0/0/0/0
9	GOL	A	562	-	-	0/4/4/4	0/0/0/0
8	SO4	B	563	-	-	0/0/0/0	0/0/0/0
9	GOL	B	564	-	-	0/4/4/4	0/0/0/0
2	045	B	691	-	-	0/21/79/79	0/3/3/3

There are no bond length outliers.

All (7) bond angle outliers are listed below:

Mol	Chain	Res	Type	Atoms	Z	Observed($^{\circ}$)	Ideal($^{\circ}$)
3	A	547	NAG	C4-C3-C2	-3.72	105.44	111.23
3	A	547	NAG	C3-C4-C5	-2.46	105.90	110.20
2	B	691	045	O1-CAQ-CAS	2.01	115.05	108.04
3	A	547	NAG	O3-C3-C2	2.13	113.33	109.11
2	B	691	045	C4-C3-C2	2.24	114.98	110.79
2	B	691	045	C1-C2-C3	3.64	117.15	109.97
3	A	547	NAG	C1-O5-C5	4.24	117.62	112.25

There are no chirality outliers.

There are no torsion outliers.

There are no ring outliers.

2 monomers are involved in 7 short contacts:

Mol	Chain	Res	Type	Clashes	Symm-Clashes
9	A	562	GOL	3	0
9	B	564	GOL	4	0

5.7 Other polymers [i](#)

There are no such residues in this entry.

5.8 Polymer linkage issues [i](#)

There are no chain breaks in this entry.

6 Fit of model and data [i](#)

6.1 Protein, DNA and RNA chains [i](#)

In the following table, the column labelled ‘#RSRZ> 2’ contains the number (and percentage) of RSRZ outliers, followed by percent RSRZ outliers for the chain as percentile scores relative to all X-ray entries and entries of similar resolution. The OWAB column contains the minimum, median, 95th percentile and maximum values of the occupancy-weighted average B-factor per residue. The column labelled ‘Q< 0.9’ lists the number of (and percentage) of residues with an average occupancy less than 0.9.

Mol	Chain	Analysed	<RSRZ>	#RSRZ>2	OWAB(Å ²)	Q<0.9
1	A	524/546 (95%)	-0.37	5 (0%) 84 82	8, 19, 29, 46	0
1	B	524/546 (95%)	-0.40	4 (0%) 87 86	7, 19, 31, 42	0
All	All	1048/1092 (95%)	-0.39	9 (0%) 85 84	7, 19, 30, 46	0

All (9) RSRZ outliers are listed below:

Mol	Chain	Res	Type	RSRZ
1	A	386	LYS	3.2
1	B	443	ASN	2.9
1	B	233	PRO	2.7
1	A	545	HIS	2.5
1	B	234	LYS	2.4
1	A	166	ASN	2.4
1	A	198	GLU	2.2
1	A	295	GLN	2.1
1	B	222	GLY	2.0

6.2 Non-standard residues in protein, DNA, RNA chains [i](#)

There are no non-standard protein/DNA/RNA residues in this entry.

6.3 Carbohydrates [i](#)

In the following table, the Atoms column lists the number of modelled atoms in the group and the number defined in the chemical component dictionary. LLDF column lists the quality of electron density of the group with respect to its neighbouring residues in protein, DNA or RNA chains. The B-factors column lists the minimum, median, 95th percentile and maximum values of B factors of atoms in the group. The column labelled ‘Q< 0.9’ lists the number of atoms with occupancy less than 0.9.

Mol	Type	Chain	Res	Atoms	RSCC	RSR	LLDF	B-factors(\AA^2)	Q<0.9
5	FUC	A	550	10/11	0.94	0.20	1.47	33,33,34,34	0
5	NAG	B	550	14/15	0.95	0.21	0.79	29,33,37,42	0
4	NAG	B	547	14/15	0.94	0.18	0.14	23,27,28,33	0
4	NAG	A	551	14/15	0.93	0.15	-0.30	19,20,21,23	0
6	NAG	B	554	14/15	0.89	0.22	-	31,36,39,43	0
7	NAG	A	554	14/15	0.92	0.25	-	34,38,40,44	0
6	BMA	B	555	11/12	0.84	0.27	-	45,47,51,54	0
6	NAG	B	558	14/15	0.93	0.29	-	37,41,44,47	0
4	BMA	A	553	11/12	0.89	0.18	-	29,30,30,30	0
4	NAG	A	552	14/15	0.93	0.25	-	23,26,27,29	0
5	NAG	A	548	14/15	0.89	0.21	-	27,31,33,34	0
5	NAG	A	549	14/15	0.87	0.26	-	34,38,40,41	0
7	BMA	A	556	11/12	0.89	0.35	-	60,62,64,66	0
6	MAN	B	556	11/12	0.80	0.42	-	56,57,57,57	0
6	FUC	B	557	10/11	0.95	0.18	-	28,28,28,29	0
7	XYS	A	559	9/10	0.76	0.50	-	65,65,66,66	0
4	NAG	B	548	14/15	0.91	0.32	-	37,40,42,45	0
6	NAG	B	553	14/15	0.94	0.19	-	24,28,29,32	0
7	NAG	A	555	14/15	0.92	0.30	-	48,49,52,56	0
6	BMA	B	560	11/12	0.79	0.39	-	60,61,64,66	0
7	MAN	A	560	11/12	0.65	0.50	-	67,67,68,68	0
6	NAG	B	559	14/15	0.89	0.31	-	51,53,55,58	0
5	FUC	B	552	10/11	0.90	0.37	-	39,40,41,41	0
7	FUC	A	558	10/11	0.93	0.34	-	41,42,42,43	0
6	FUC	B	562	10/11	0.92	0.27	-	45,45,45,45	0
4	BMA	B	549	11/12	0.81	0.43	-	48,50,51,51	0
6	MAN	B	561	11/12	0.71	0.47	-	67,67,68,68	0
7	MAN	A	557	11/12	0.78	0.34	-	61,62,62,63	0
5	NAG	B	551	14/15	0.82	0.36	-	46,49,50,50	0

6.4 Ligands

In the following table, the Atoms column lists the number of modelled atoms in the group and the number defined in the chemical component dictionary. LLDF column lists the quality of electron density of the group with respect to its neighbouring residues in protein, DNA or RNA chains. The B-factors column lists the minimum, median, 95th percentile and maximum values of B factors of atoms in the group. The column labelled 'Q< 0.9' lists the number of atoms with occupancy less than 0.9.

Mol	Type	Chain	Res	Atoms	RSCC	RSR	LLDF	B-factors(\AA^2)	Q<0.9
9	GOL	A	562	6/6	0.86	0.33	8.60	40,42,42,42	0
9	GOL	B	564	6/6	0.94	0.24	4.07	25,26,27,27	0
2	045	B	691	34/34	0.80	0.29	3.98	57,65,68,70	0

Continued on next page...

Continued from previous page...

Mol	Type	Chain	Res	Atoms	RSCC	RSR	LLDF	B-factors(\AA^2)	Q<0.9
3	NAG	A	547	14/15	0.88	0.30	2.85	23,25,26,27	0
8	SO4	B	563	5/5	0.95	0.23	-	47,47,48,48	0
8	SO4	A	561	5/5	0.93	0.28	-	58,58,58,58	0

6.5 Other polymers [i](#)

There are no such residues in this entry.