



# Full wwPDB X-ray Structure Validation Report ⓘ

Feb 1, 2016 – 01:38 PM GMT

PDB ID : 3UGW  
Title : Crystal Structure of C-lobe of Bovine lactoferrin Complexed with Deoxycytidine at 1.87 Å Resolution  
Authors : Shukla, P.K.; Gautam, L.; Sinha, M.; Kaur, P.; Sharma, S.; Singh, T.P.  
Deposited on : 2011-11-03  
Resolution : 1.87 Å(reported)

This is a Full wwPDB X-ray Structure Validation Report for a publicly released PDB entry.  
We welcome your comments at [validation@mail.wwpdb.org](mailto:validation@mail.wwpdb.org)  
A user guide is available at  
<http://wwpdb.org/validation/2016/XrayValidationReportHelp>  
with specific help available everywhere you see the ⓘ symbol.

---

The following versions of software and data (see [references ⓘ](#)) were used in the production of this report:

MolProbity : 4.02b-467  
Mogul : 1.7 (RC4), CSD as536be (2015)  
Xtriage (Phenix) : 1.9-1692  
EDS : rb-20026688  
Percentile statistics : 20151230.v01 (using entries in the PDB archive December 30th 2015)  
Refmac : 5.8.0135  
CCP4 : 6.5.0  
Ideal geometry (proteins) : Engh & Huber (2001)  
Ideal geometry (DNA, RNA) : Parkinson et al. (1996)  
Validation Pipeline (wwPDB-VP) : trunk26865

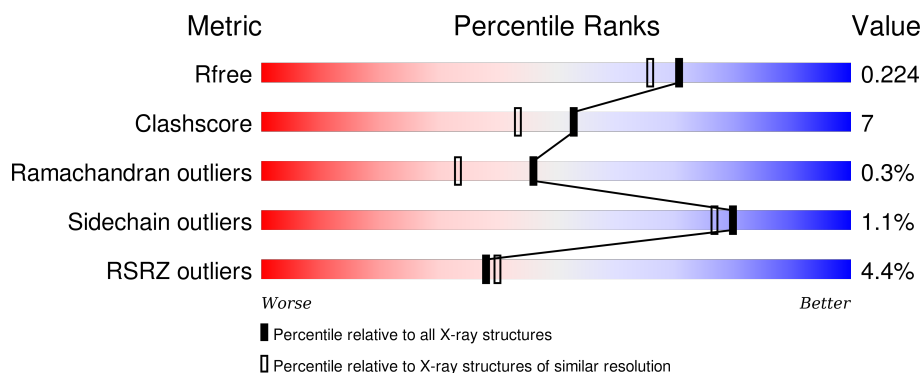
# 1 Overall quality at a glance

The following experimental techniques were used to determine the structure:

## *X-RAY DIFFRACTION*

The reported resolution of this entry is 1.87 Å.

Percentile scores (ranging between 0-100) for global validation metrics of the entry are shown in the following graphic. The table shows the number of entries on which the scores are based.



Metric	Whole archive (#Entries)	Similar resolution (#Entries, resolution range(Å))
$R_{free}$	91344	6965 (1.90-1.86)
Clashscore	102246	7778 (1.90-1.86)
Ramachandran outliers	100387	7691 (1.90-1.86)
Sidechain outliers	100360	7692 (1.90-1.86)
RSRZ outliers	91569	6979 (1.90-1.86)

The table below summarises the geometric issues observed across the polymeric chains and their fit to the electron density. The red, orange, yellow and green segments on the lower bar indicate the fraction of residues that contain outliers for  $\geq 3$ , 2, 1 and 0 types of geometric quality criteria. A grey segment represents the fraction of residues that are not modelled. The numeric value for each fraction is indicated below the corresponding segment, with a dot representing fractions  $\leq 5\%$ . The upper red bar (where present) indicates the fraction of residues that have poor fit to the electron density. The numeric value is given above the bar.

Mol	Chain	Length	Quality of chain
1	A	335	<div> <div>3%</div> <div>85%</div> <div>14%</div> <div>.</div> </div>
2	B	6	<div> <div>50%</div> <div>17%</div> <div>33%</div> </div>

The following table lists non-polymeric compounds, carbohydrate monomers and non-standard residues in protein, DNA, RNA chains that are outliers for geometric or electron-density-fit criteria:

Mol	Type	Chain	Res	Chirality	Geometry	Clashes	Electron density
10	DCZ	A	677	-	-	-	X
4	FE	A	84	-	-	-	X
7	NAG	A	1	-	-	-	X
9	GOL	A	10	-	-	-	X

## 2 Entry composition

There are 11 unique types of molecules in this entry. The entry contains 3051 atoms, of which 0 are hydrogens and 0 are deuteriums.

In the tables below, the ZeroOcc column contains the number of atoms modelled with zero occupancy, the AltConf column contains the number of residues with at least one atom in alternate conformation and the Trace column contains the number of residues modelled with at most 2 atoms.

- Molecule 1 is a protein called Lactotransferrin.

Mol	Chain	Residues	Atoms					ZeroOcc	AltConf	Trace
1	A	335	Total	C	N	O	S	0	0	0
			2560	1593	448	499	20			

There are 2 discrepancies between the modelled and reference sequences:

Chain	Residue	Modelled	Actual	Comment	Reference
A	565	LYS	ASN	SEE REMARK 999	UNP P24627
A	608	GLU	LYS	SEE REMARK 999	UNP P24627

- Molecule 2 is a protein called C-terminal peptide from Lactotransferrin.

Mol	Chain	Residues	Atoms					ZeroOcc	AltConf	Trace
2	B	6	Total	C	N	O	S	0	0	0
			44	29	6	8	1			

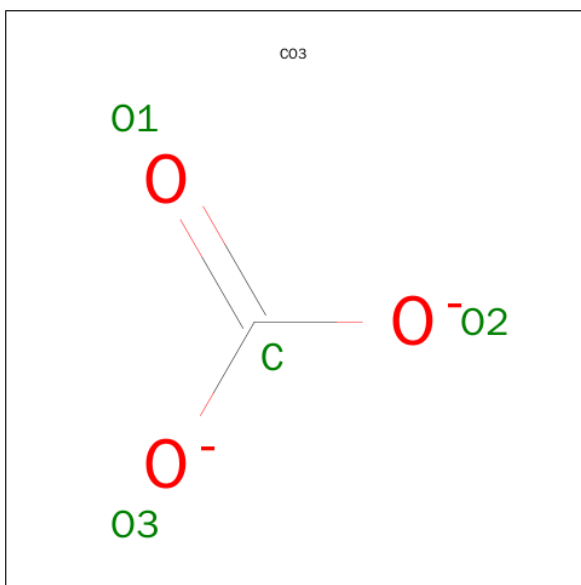
- Molecule 3 is ZINC ION (three-letter code: ZN) (formula: Zn).

Mol	Chain	Residues	Atoms		ZeroOcc	AltConf
3	A	2	Total	Zn	0	0
			2	2		

- Molecule 4 is FE (III) ION (three-letter code: FE) (formula: Fe).

Mol	Chain	Residues	Atoms		ZeroOcc	AltConf
4	A	1	Total	Fe	0	0
			1	1		

- Molecule 5 is CARBONATE ION (three-letter code: CO3) (formula: CO<sub>3</sub>).



Mol	Chain	Residues	Atoms			ZeroOcc	AltConf
5	A	1	Total	C	O	0	0
			4	1	3		

- Molecule 6 is SULFATE ION (three-letter code: SO4) (formula:  $O_4S$ ).



Mol	Chain	Residues	Atoms			ZeroOcc	AltConf
6	A	1	Total	O	S	0	0
			5	4	1		

- Molecule 7 is SUGAR (N-ACETYL-D-GLUCOSAMINE) (three-letter code: NAG) (formula:  $C_8H_{15}NO_6$ ).

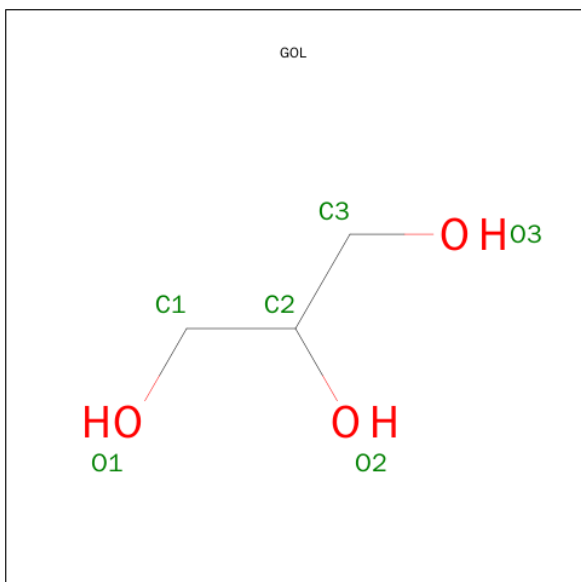


Mol	Chain	Residues	Atoms				ZeroOcc	AltConf
7	A	1	Total	C	N	O	0	0
			14	8	1	5		

- Molecule 8 is a polymer of unknown type called SUGAR (2-MER).

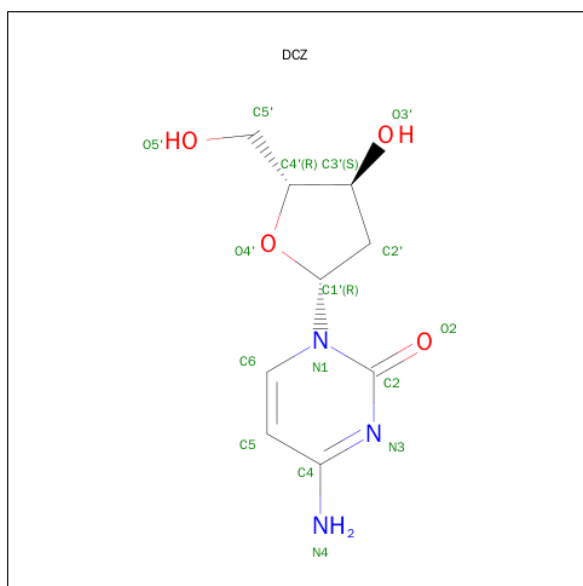
Mol	Chain	Residues	Atoms				ZeroOcc	AltConf
8	A	2	Total	C	N	O	0	0
			28	16	2	10		
8	A	2	Total	C	N	O	0	0
			28	16	2	10		

- Molecule 9 is GLYCEROL (three-letter code: GOL) (formula:  $C_3H_8O_3$ ).



Mol	Chain	Residues	Atoms			ZeroOcc	AltConf
9	A	1	Total	C	O	0	0
			6	3	3		

- Molecule 10 is 2'-DEOXYCYTIDINE (three-letter code: DCZ) (formula:  $C_9H_{13}N_3O_4$ ).



Mol	Chain	Residues	Atoms				ZeroOcc	AltConf
10	A	1	Total	C	N	O	0	0
			16	9	3	4		

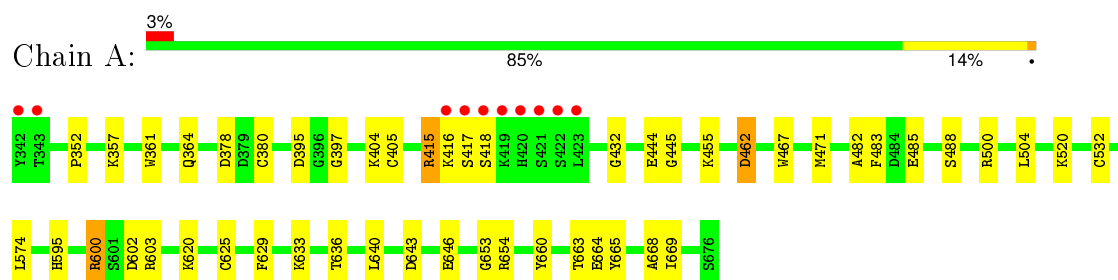
- Molecule 11 is water.

Mol	Chain	Residues	Atoms		ZeroOcc	AltConf
11	A	341	Total	O	0	0
			341	341		
11	B	2	Total	O	0	0
			2	2		

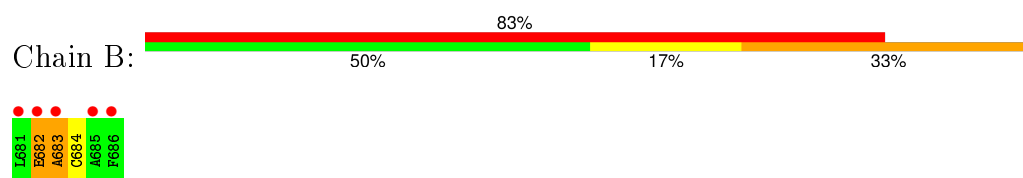
### 3 Residue-property plots [i](#)

These plots are drawn for all protein, RNA and DNA chains in the entry. The first graphic for a chain summarises the proportions of errors displayed in the second graphic. The second graphic shows the sequence view annotated by issues in geometry and electron density. Residues are color-coded according to the number of geometric quality criteria for which they contain at least one outlier: green = 0, yellow = 1, orange = 2 and red = 3 or more. A red dot above a residue indicates a poor fit to the electron density ( $\text{RSRZ} > 2$ ). Stretches of 2 or more consecutive residues without any outlier are shown as a green connector. Residues present in the sample, but not in the model, are shown in grey.

#### • Molecule 1: Lactotransferrin



#### • Molecule 2: C-terminal peptide from Lactotransferrin





## 4 Data and refinement statistics

Property	Value	Source
Space group	P 1 21 1	Depositor
Cell constants a, b, c, $\alpha$ , $\beta$ , $\gamma$	62.10Å 49.87Å 65.51Å 90.00° 107.23° 90.00°	Depositor
Resolution (Å)	62.57 – 1.87 62.57 – 1.87	Depositor EDS
% Data completeness (in resolution range)	98.7 (62.57-1.87) 98.7 (62.57-1.87)	Depositor EDS
$R_{merge}$	(Not available)	Depositor
$R_{sym}$	0.07	Depositor
$\langle I/\sigma(I) \rangle$ <sup>1</sup>	2.30 (at 1.87Å)	Xtriage
Refinement program	REFMAC 5.6.0117	Depositor
R, $R_{free}$	0.181 , 0.223 0.181 , 0.224	Depositor DCC
$R_{free}$ test set	1585 reflections (5.30%)	DCC
Wilson B-factor (Å <sup>2</sup> )	22.2	Xtriage
Anisotropy	0.481	Xtriage
Bulk solvent $k_{sol}$ (e/Å <sup>3</sup> ), $B_{sol}$ (Å <sup>2</sup> )	0.37 , 58.0	EDS
Estimated twinning fraction	No twinning to report.	Xtriage
L-test for twinning <sup>2</sup>	$\langle  L  \rangle = 0.48$ , $\langle L^2 \rangle = 0.32$	Xtriage
Outliers	0 of 31464 reflections	Xtriage
$F_o, F_c$ correlation	0.95	EDS
Total number of atoms	3051	wwPDB-VP
Average B, all atoms (Å <sup>2</sup> )	30.0	wwPDB-VP

Xtriage's analysis on translational NCS is as follows: *The largest off-origin peak in the Patterson function is 6.48% of the height of the origin peak. No significant pseudotranslation is detected.*

<sup>1</sup>Intensities estimated from amplitudes.

<sup>2</sup>Theoretical values of  $\langle |L| \rangle$ ,  $\langle L^2 \rangle$  for acentric reflections are 0.5, 0.375 respectively for untwinned datasets, and 0.333, 0.2 for perfectly twinned datasets.

## 5 Model quality

### 5.1 Standard geometry

Bond lengths and bond angles in the following residue types are not validated in this section: GOL, ZN, NAG, CO3, DCZ, FE, SO4

The Z score for a bond length (or angle) is the number of standard deviations the observed value is removed from the expected value. A bond length (or angle) with  $|Z| > 5$  is considered an outlier worth inspection. RMSZ is the root-mean-square of all Z scores of the bond lengths (or angles).

Mol	Chain	Bond lengths		Bond angles	
		RMSZ	$\# Z  > 5$	RMSZ	$\# Z  > 5$
1	A	1.17	5/2608 (0.2%)	1.08	7/3533 (0.2%)
2	B	0.80	0/44	0.74	0/58
All	All	1.16	5/2652 (0.2%)	1.08	7/3591 (0.2%)

All (5) bond length outliers are listed below:

Mol	Chain	Res	Type	Atoms	Z	Observed(Å)	Ideal(Å)
1	A	361	TRP	CD2-CE2	5.99	1.48	1.41
1	A	467	TRP	CD2-CE2	5.75	1.48	1.41
1	A	660	TYR	CE1-CZ	5.61	1.45	1.38
1	A	444	GLU	CD-OE1	-5.58	1.19	1.25
1	A	445	GLY	N-CA	5.40	1.54	1.46

All (7) bond angle outliers are listed below:

Mol	Chain	Res	Type	Atoms	Z	Observed(°)	Ideal(°)
1	A	600	ARG	NE-CZ-NH1	-12.20	114.20	120.30
1	A	600	ARG	NE-CZ-NH2	6.15	123.37	120.30
1	A	378	ASP	CB-CG-OD1	5.73	123.46	118.30
1	A	640	LEU	CB-CG-CD2	5.36	120.11	111.00
1	A	574	LEU	CB-CG-CD1	-5.27	102.03	111.00
1	A	462	ASP	CB-CG-OD2	-5.18	113.63	118.30
1	A	532	CYS	CA-CB-SG	5.09	123.17	114.00

There are no chirality outliers.

There are no planarity outliers.

## 5.2 Too-close contacts ⓘ

In the following table, the Non-H and H(model) columns list the number of non-hydrogen atoms and hydrogen atoms in the chain respectively. The H(added) column lists the number of hydrogen atoms added and optimized by MolProbity. The Clashes column lists the number of clashes within the asymmetric unit, whereas Symm-Clashes lists symmetry related clashes.

Mol	Chain	Non-H	H(model)	H(added)	Clashes	Symm-Clashes
1	A	2560	0	2479	32	0
2	B	44	0	39	4	0
3	A	2	0	0	0	0
4	A	1	0	0	0	0
5	A	4	0	0	0	0
6	A	5	0	0	0	0
7	A	14	0	13	0	0
8	A	56	0	50	2	0
9	A	6	0	8	1	0
10	A	16	0	12	2	0
11	A	341	0	0	1	0
11	B	2	0	0	0	0
All	All	3051	0	2601	35	0

The all-atom clashscore is defined as the number of clashes found per 1000 atoms (including hydrogen atoms). The all-atom clashscore for this structure is 7.

All (35) close contacts within the same asymmetric unit are listed below, sorted by their clash magnitude.

Atom-1	Atom-2	Interatomic distance (Å)	Clash overlap (Å)
1:A:471:MET:HE2	1:A:483:PHE:HB2	1.66	0.78
1:A:471:MET:CE	1:A:483:PHE:HB2	2.16	0.75
1:A:432:GLY:O	10:A:677:DCZ:H5	1.93	0.69
1:A:636:THR:HA	1:A:643:ASP:OD2	1.98	0.64
1:A:395:ASP:HA	1:A:595:HIS:CD2	2.37	0.59
1:A:357:LYS:HB2	9:A:10:GOL:H31	1.87	0.56
1:A:415:ARG:NH2	1:A:432:GLY:O	2.35	0.55
1:A:668:ALA:HB1	8:A:3:NAG:H83	1.88	0.55
2:B:682:GLU:O	2:B:683:ALA:CB	2.55	0.55
1:A:664:GLU:HG2	8:A:4:NAG:O6	2.08	0.54
1:A:488:SER:O	1:A:500:ARG:HD3	2.08	0.53
1:A:663:THR:HG23	1:A:664:GLU:N	2.25	0.52
1:A:405:CYS:HA	2:B:684:CYS:HB2	1.94	0.50
1:A:602:ASP:OD1	1:A:603:ARG:HG2	2.11	0.50
1:A:397:GLY:HA3	1:A:462:ASP:O	2.13	0.48

*Continued on next page...*

Continued from previous page...

Atom-1	Atom-2	Interatomic distance (Å)	Clash overlap (Å)
1:A:471:MET:HE1	1:A:483:PHE:HB2	1.94	0.47
1:A:653:GLY:O	1:A:654:ARG:C	2.52	0.47
1:A:620:LYS:HD3	1:A:646:GLU:HG3	1.95	0.47
1:A:455:LYS:HB3	1:A:504:LEU:HD11	1.95	0.47
1:A:600:ARG:HB2	11:A:70:HOH:O	2.15	0.47
1:A:416:LYS:H	1:A:416:LYS:HG2	1.54	0.47
1:A:404:LYS:NZ	2:B:682:GLU:HA	2.30	0.46
1:A:416:LYS:HE3	1:A:620:LYS:HE3	1.97	0.45
1:A:352:PRO:HG2	1:A:520:LYS:HD3	1.99	0.45
1:A:665:TYR:CZ	1:A:669:ILE:HD11	2.52	0.43
1:A:364:GLN:HG3	1:A:629:PHE:HB2	2.00	0.43
10:A:677:DCZ:O2	10:A:677:DCZ:H2'1	2.17	0.43
1:A:625:CYS:HB2	1:A:629:PHE:O	2.19	0.42
2:B:682:GLU:O	2:B:683:ALA:HB2	2.19	0.42
1:A:633:LYS:HA	1:A:633:LYS:HD3	1.76	0.42
1:A:417:SER:OG	1:A:418:SER:N	2.51	0.42
1:A:636:THR:CA	1:A:643:ASP:OD2	2.67	0.42
1:A:471:MET:HB3	1:A:471:MET:HE2	1.94	0.42
1:A:482:ALA:HB1	1:A:485:GLU:HG3	2.02	0.42
1:A:455:LYS:HB2	1:A:455:LYS:HE3	1.94	0.41

There are no symmetry-related clashes.

## 5.3 Torsion angles ⓘ

### 5.3.1 Protein backbone ⓘ

In the following table, the Percentiles column shows the percent Ramachandran outliers of the chain as a percentile score with respect to all X-ray entries followed by that with respect to entries of similar resolution.

The Analysed column shows the number of residues for which the backbone conformation was analysed, and the total number of residues.

Mol	Chain	Analysed	Favoured	Allowed	Outliers	Percentiles	
1	A	333/335 (99%)	322 (97%)	11 (3%)	0	100	100
2	B	4/6 (67%)	2 (50%)	1 (25%)	1 (25%)	0	0
All	All	337/341 (99%)	324 (96%)	12 (4%)	1 (0%)	46	33

All (1) Ramachandran outliers are listed below:

Mol	Chain	Res	Type
2	B	683	ALA

### 5.3.2 Protein sidechains [i](#)

In the following table, the Percentiles column shows the percent sidechain outliers of the chain as a percentile score with respect to all X-ray entries followed by that with respect to entries of similar resolution.

The Analysed column shows the number of residues for which the sidechain conformation was analysed, and the total number of residues.

Mol	Chain	Analysed	Rotameric	Outliers	Percentiles	
1	A	278/278 (100%)	276 (99%)	2 (1%)	88	87
2	B	4/4 (100%)	3 (75%)	1 (25%)	1	0
All	All	282/282 (100%)	279 (99%)	3 (1%)	80	77

All (3) residues with a non-rotameric sidechain are listed below:

Mol	Chain	Res	Type
1	A	380	CYS
1	A	415	ARG
2	B	682	GLU

Some sidechains can be flipped to improve hydrogen bonding and reduce clashes. All (2) such sidechains are listed below:

Mol	Chain	Res	Type
1	A	359	GLN
1	A	420	HIS

### 5.3.3 RNA [i](#)

There are no RNA molecules in this entry.

## 5.4 Non-standard residues in protein, DNA, RNA chains [i](#)

There are no non-standard protein/DNA/RNA residues in this entry.

## 5.5 Carbohydrates ⓘ

4 carbohydrates are modelled in this entry.

In the following table, the Counts columns list the number of bonds (or angles) for which Mogul statistics could be retrieved, the number of bonds (or angles) that are observed in the model and the number of bonds (or angles) that are defined in the chemical component dictionary. The Link column lists molecule types, if any, to which the group is linked. The Z score for a bond length (or angle) is the number of standard deviations the observed value is removed from the expected value. A bond length (or angle) with  $|Z| > 2$  is considered an outlier worth inspection. RMSZ is the root-mean-square of all Z scores of the bond lengths (or angles).

Mol	Type	Chain	Res	Link	Bond lengths			Bond angles		
					Counts	RMSZ	# $ Z  > 2$	Counts	RMSZ	# $ Z  > 2$
8	NAG	A	3	1,8	14,14,15	0.80	0	15,19,21	1.43	1 (6%)
8	NAG	A	4	8	14,14,15	1.30	3 (21%)	15,19,21	1.96	3 (20%)
8	NAG	A	8	1,8	14,14,15	0.84	0	15,19,21	1.77	1 (6%)
8	NAG	A	9	8	14,14,15	0.68	0	15,19,21	2.15	5 (33%)

In the following table, the Chirals column lists the number of chiral outliers, the number of chiral centers analysed, the number of these observed in the model and the number defined in the chemical component dictionary. Similar counts are reported in the Torsion and Rings columns. '-' means no outliers of that kind were identified.

Mol	Type	Chain	Res	Link	Chirals	Torsions	Rings
8	NAG	A	3	1,8	-	0/6/23/26	0/1/1/1
8	NAG	A	4	8	-	0/6/23/26	0/1/1/1
8	NAG	A	8	1,8	-	0/6/23/26	0/1/1/1
8	NAG	A	9	8	-	0/6/23/26	0/1/1/1

All (3) bond length outliers are listed below:

Mol	Chain	Res	Type	Atoms	Z	Observed(Å)	Ideal(Å)
8	A	4	NAG	O5-C1	-2.65	1.39	1.43
8	A	4	NAG	O7-C7	-2.54	1.17	1.23
8	A	4	NAG	C2-N2	-2.51	1.41	1.46

All (10) bond angle outliers are listed below:

Mol	Chain	Res	Type	Atoms	Z	Observed(°)	Ideal(°)
8	A	9	NAG	C3-C4-C5	-3.31	104.43	110.20
8	A	9	NAG	C6-C5-C4	-2.15	107.72	113.02
8	A	4	NAG	C1-O5-C5	2.28	115.15	112.25
8	A	4	NAG	O4-C4-C5	2.38	115.55	109.24

*Continued on next page...*

Continued from previous page...

Mol	Chain	Res	Type	Atoms	Z	Observed(°)	Ideal(°)
8	A	9	NAG	O4-C4-C5	2.39	115.56	109.24
8	A	9	NAG	O5-C5-C6	2.98	113.80	107.35
8	A	3	NAG	C1-O5-C5	4.33	117.74	112.25
8	A	9	NAG	C1-O5-C5	4.89	118.45	112.25
8	A	4	NAG	C2-N2-C7	5.48	130.08	123.04
8	A	8	NAG	C1-O5-C5	6.16	120.06	112.25

There are no chirality outliers.

There are no torsion outliers.

There are no ring outliers.

2 monomers are involved in 2 short contacts:

Mol	Chain	Res	Type	Clashes	Symm-Clashes
8	A	3	NAG	1	0
8	A	4	NAG	1	0

## 5.6 Ligand geometry

Of 8 ligands modelled in this entry, 3 are monoatomic - leaving 5 for Mogul analysis.

In the following table, the Counts columns list the number of bonds (or angles) for which Mogul statistics could be retrieved, the number of bonds (or angles) that are observed in the model and the number of bonds (or angles) that are defined in the chemical component dictionary. The Link column lists molecule types, if any, to which the group is linked. The Z score for a bond length (or angle) is the number of standard deviations the observed value is removed from the expected value. A bond length (or angle) with  $|Z| > 2$  is considered an outlier worth inspection. RMSZ is the root-mean-square of all Z scores of the bond lengths (or angles).

Mol	Type	Chain	Res	Link	Bond lengths			Bond angles		
					Counts	RMSZ	$\# Z  > 2$	Counts	RMSZ	$\# Z  > 2$
7	NAG	A	1	1	14,14,15	0.28	0	15,19,21	0.53	0
9	GOL	A	10	-	5,5,5	0.31	0	5,5,5	1.09	0
10	DCZ	A	677	-	13,17,17	1.22	1 (7%)	18,24,24	3.14	10 (55%)
6	SO4	A	692	-	4,4,4	0.57	0	6,6,6	0.57	0
5	CO3	A	85	4	0,3,3	0.00	-	0,3,3	0.00	-

In the following table, the Chirals column lists the number of chiral outliers, the number of chiral centers analysed, the number of these observed in the model and the number defined in the chemical component dictionary. Similar counts are reported in the Torsion and Rings columns. '-' means no outliers of that kind were identified.

Mol	Type	Chain	Res	Link	Chirals	Torsions	Rings
7	NAG	A	1	1	-	0/6/23/26	0/1/1/1
9	GOL	A	10	-	-	0/4/4/4	0/0/0/0
10	DCZ	A	677	-	-	0/2/18/18	0/2/2/2
6	SO4	A	692	-	-	0/0/0/0	0/0/0/0
5	CO3	A	85	4	-	0/0/0/0	0/0/0/0

All (1) bond length outliers are listed below:

Mol	Chain	Res	Type	Atoms	Z	Observed(Å)	Ideal(Å)
10	A	677	DCZ	O3'-C3'	-3.44	1.35	1.43

All (10) bond angle outliers are listed below:

Mol	Chain	Res	Type	Atoms	Z	Observed(°)	Ideal(°)
10	A	677	DCZ	C2'-C1'-N1	-7.35	96.27	114.16
10	A	677	DCZ	C5'-C4'-C3'	-2.33	108.60	114.80
10	A	677	DCZ	O4'-C4'-C3'	-2.08	100.43	105.67
10	A	677	DCZ	C4'-O4'-C1'	-2.05	104.27	109.47
10	A	677	DCZ	C5-C4-N3	-2.01	119.26	121.80
10	A	677	DCZ	C2'-C3'-C4'	-2.01	98.62	102.77
10	A	677	DCZ	C5-C4-N4	3.37	126.47	121.31
10	A	677	DCZ	O4'-C4'-C5'	4.04	117.93	109.17
10	A	677	DCZ	C2-N3-C4	4.41	121.84	115.61
10	A	677	DCZ	O4'-C1'-N1	7.08	119.98	107.72

There are no chirality outliers.

There are no torsion outliers.

There are no ring outliers.

2 monomers are involved in 3 short contacts:

Mol	Chain	Res	Type	Clashes	Symm-Clashes
9	A	10	GOL	1	0
10	A	677	DCZ	2	0

## 5.7 Other polymers

There are no such residues in this entry.



## 5.8 Polymer linkage issues ⓘ

There are no chain breaks in this entry.

## 6 Fit of model and data [i](#)

### 6.1 Protein, DNA and RNA chains [i](#)

In the following table, the column labelled ‘#RSRZ> 2’ contains the number (and percentage) of RSRZ outliers, followed by percent RSRZ outliers for the chain as percentile scores relative to all X-ray entries and entries of similar resolution. The OWAB column contains the minimum, median, 95<sup>th</sup> percentile and maximum values of the occupancy-weighted average B-factor per residue. The column labelled ‘Q< 0.9’ lists the number of (and percentage) of residues with an average occupancy less than 0.9.

Mol	Chain	Analysed	<RSRZ>	#RSRZ>2	OWAB(Å <sup>2</sup> )	Q<0.9
1	A	335/335 (100%)	-0.19	10 (2%) 54 55	12, 23, 54, 103	0
2	B	6/6 (100%)	4.50	5 (83%) 0 0	46, 57, 94, 100	0
All	All	341/341 (100%)	-0.11	15 (4%) 38 40	12, 23, 55, 103	0

All (15) RSRZ outliers are listed below:

Mol	Chain	Res	Type	RSRZ
2	B	681	LEU	12.2
1	A	342	TYR	7.5
2	B	685	ALA	3.9
1	A	422	SER	3.8
1	A	420	HIS	3.8
2	B	682	GLU	3.8
2	B	683	ALA	3.6
1	A	418	SER	3.2
1	A	421	SER	3.0
1	A	417	SER	3.0
1	A	419	LYS	2.6
1	A	416	LYS	2.6
2	B	686	PHE	2.4
1	A	343	THR	2.4
1	A	423	LEU	2.2

### 6.2 Non-standard residues in protein, DNA, RNA chains [i](#)

There are no non-standard protein/DNA/RNA residues in this entry.

### 6.3 Carbohydrates [i](#)

In the following table, the Atoms column lists the number of modelled atoms in the group and the number defined in the chemical component dictionary. LLDF column lists the quality of electron density of the group with respect to its neighbouring residues in protein, DNA or RNA chains. The B-factors column lists the minimum, median, 95<sup>th</sup> percentile and maximum values of B factors of atoms in the group. The column labelled 'Q< 0.9' lists the number of atoms with occupancy less than 0.9.

Mol	Type	Chain	Res	Atoms	RSCC	RSR	LLDF	B-factors(Å <sup>2</sup> )	Q<0.9
8	NAG	A	8	14/15	0.96	0.09	0.62	25,31,39,43	0
8	NAG	A	3	14/15	0.89	0.11	0.35	32,41,50,51	0
8	NAG	A	9	14/15	0.84	0.15	-0.37	42,48,53,56	0
8	NAG	A	4	14/15	0.90	0.10	-	43,49,56,57	0

### 6.4 Ligands [i](#)

In the following table, the Atoms column lists the number of modelled atoms in the group and the number defined in the chemical component dictionary. LLDF column lists the quality of electron density of the group with respect to its neighbouring residues in protein, DNA or RNA chains. The B-factors column lists the minimum, median, 95<sup>th</sup> percentile and maximum values of B factors of atoms in the group. The column labelled 'Q< 0.9' lists the number of atoms with occupancy less than 0.9.

Mol	Type	Chain	Res	Atoms	RSCC	RSR	LLDF	B-factors(Å <sup>2</sup> )	Q<0.9
9	GOL	A	10	6/6	0.91	0.26	6.49	33,34,36,42	0
10	DCZ	A	677	16/16	0.79	0.26	4.93	40,51,55,76	0
7	NAG	A	1	14/15	0.80	0.17	3.03	40,59,68,70	0
4	FE	A	84	1/1	1.00	0.11	2.32	16,16,16,16	0
3	ZN	A	81	1/1	0.99	0.11	1.75	23,23,23,23	0
5	CO3	A	85	4/4	0.97	0.08	0.05	12,16,16,16	0
3	ZN	A	82	1/1	0.98	0.13	-	25,25,25,25	0
6	SO4	A	692	5/5	0.96	0.09	-	51,51,52,56	0

### 6.5 Other polymers [i](#)

There are no such residues in this entry.