



# Full wwPDB X-ray Structure Validation Report ⓘ

Feb 19, 2016 – 07:37 PM GMT

PDB ID : 4UH3  
Title : Structure of rat neuronal nitric oxide synthase heme domain in complex with N1-(3-(2-(6-Amino-4-methylpyridin-2-yl)ethyl)-5- fluorophenyl)-N1,N2-dimethylethane-1,2-diamine  
Authors : Li, H.; Poulos, T.L.  
Deposited on : 2015-03-23  
Resolution : 2.03 Å(reported)

This is a Full wwPDB X-ray Structure Validation Report for a publicly released PDB entry.  
We welcome your comments at [validation@mail.wwpdb.org](mailto:validation@mail.wwpdb.org)  
A user guide is available at  
<http://wwpdb.org/validation/2016/XrayValidationReportHelp>  
with specific help available everywhere you see the ⓘ symbol.

---

The following versions of software and data (see [references ⓘ](#)) were used in the production of this report:

MolProbity : 4.02b-467  
Mogul : 1.7.1 (RC1), CSD as537be (2016)  
Xtriage (Phenix) : 1.9-1692  
EDS : rb-20026982  
Percentile statistics : 20151230.v01 (using entries in the PDB archive December 30th 2015)  
Refmac : 5.8.0135  
CCP4 : 6.5.0  
Ideal geometry (proteins) : Engh & Huber (2001)  
Ideal geometry (DNA, RNA) : Parkinson et al. (1996)  
Validation Pipeline (wwPDB-VP) : rb-20026982

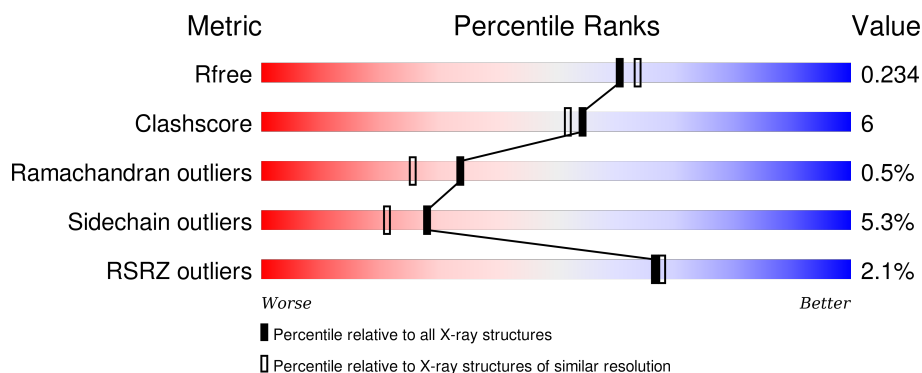
# 1 Overall quality at a glance

The following experimental techniques were used to determine the structure:

## *X-RAY DIFFRACTION*

The reported resolution of this entry is 2.03 Å.

Percentile scores (ranging between 0-100) for global validation metrics of the entry are shown in the following graphic. The table shows the number of entries on which the scores are based.



Metric	Whole archive (#Entries)	Similar resolution (#Entries, resolution range(Å))
$R_{free}$	91344	7858 (2.04-2.00)
Clashscore	102246	9060 (2.04-2.00)
Ramachandran outliers	100387	8952 (2.04-2.00)
Sidechain outliers	100360	8951 (2.04-2.00)
RSRZ outliers	91569	7873 (2.04-2.00)

The table below summarises the geometric issues observed across the polymeric chains and their fit to the electron density. The red, orange, yellow and green segments on the lower bar indicate the fraction of residues that contain outliers for  $\geq 3$ , 2, 1 and 0 types of geometric quality criteria. A grey segment represents the fraction of residues that are not modelled. The numeric value for each fraction is indicated below the corresponding segment, with a dot representing fractions  $\leq 5\%$ . The upper red bar (where present) indicates the fraction of residues that have poor fit to the electron density. The numeric value is given above the bar.

Mol	Chain	Length	Quality of chain
1	A	422	 3% 78% 16% • •
1	B	422	 % 84% 12% • •

The following table lists non-polymeric compounds, carbohydrate monomers and non-standard residues in protein, DNA, RNA chains that are outliers for geometric or electron-density-fit criteria:

Mol	Type	Chain	Res	Chirality	Geometry	Clashes	Electron density
4	S85	A	800	-	-	-	X
5	ACT	A	860	-	-	-	X
5	ACT	B	860	-	-	-	X

## 2 Entry composition [i](#)

There are 7 unique types of molecules in this entry. The entry contains 7087 atoms, of which 0 are hydrogens and 0 are deuteriums.

In the tables below, the ZeroOcc column contains the number of atoms modelled with zero occupancy, the AltConf column contains the number of residues with at least one atom in alternate conformation and the Trace column contains the number of residues modelled with at most 2 atoms.

- Molecule 1 is a protein called NITRIC OXIDE SYNTHASE, BRAIN.

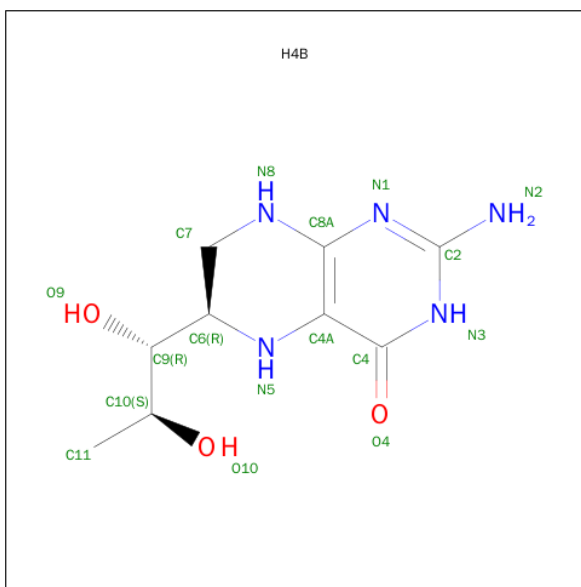
Mol	Chain	Residues	Atoms					ZeroOcc	AltConf	Trace
1	A	408	Total	C	N	O	S	3	3	1
			3326	2129	567	608	22			
1	B	411	Total	C	N	O	S	0	4	0
			3360	2150	574	614	22			

- Molecule 2 is PROTOPORPHYRIN IX CONTAINING FE (three-letter code: HEM) (formula:  $C_{34}H_{32}FeN_4O_4$ ).



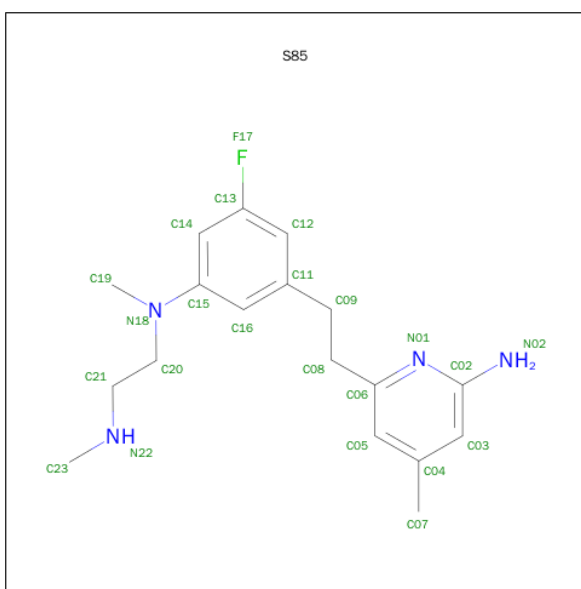
Mol	Chain	Residues	Atoms					ZeroOcc	AltConf
2	A	1	Total	C	Fe	N	O	0	0
			43	34	1	4	4		
2	B	1	Total	C	Fe	N	O	0	0
			43	34	1	4	4		

- Molecule 3 is 5,6,7,8-TETRAHYDROBIOPTERIN (three-letter code: H4B) (formula:  $C_9H_{15}N_5O_3$ ).



Mol	Chain	Residues	Atoms				ZeroOcc	AltConf
3	A	1	Total	C	N	O	0	0
			17	9	5	3		
3	B	1	Total	C	N	O	0	0
			17	9	5	3		

- Molecule 4 is N1-(3-(2-(6-AMINO-4-METHYLPYRIDIN-2-YL)ETHYL)-5-FLUOROPHENYL)-N1,N2-DIMETHYLETHANE-1,2-DIAMINE (three-letter code: S85) (formula:  $C_{18}H_{25}FN_4$ ).



Mol	Chain	Residues	Atoms				ZeroOcc	AltConf
4	A	1	Total	C	F	N	0	0
			23	18	1	4		

Continued on next page...

*Continued from previous page...*

Mol	Chain	Residues	Atoms				ZeroOcc	AltConf
4	B	1	Total	C	F	N	0	0
			23	18	1	4		

- Molecule 5 is ACETATE ION (three-letter code: ACT) (formula: C<sub>2</sub>H<sub>3</sub>O<sub>2</sub>).



Mol	Chain	Residues	Atoms			ZeroOcc	AltConf
5	A	1	Total	C	O	0	0
			4	2	2		
5	B	1	Total	C	O	0	0
			4	2	2		

- Molecule 6 is ZINC ION (three-letter code: ZN) (formula: Zn).

Mol	Chain	Residues	Atoms		ZeroOcc	AltConf
6	B	1	Total	Zn	0	0
			1	1		

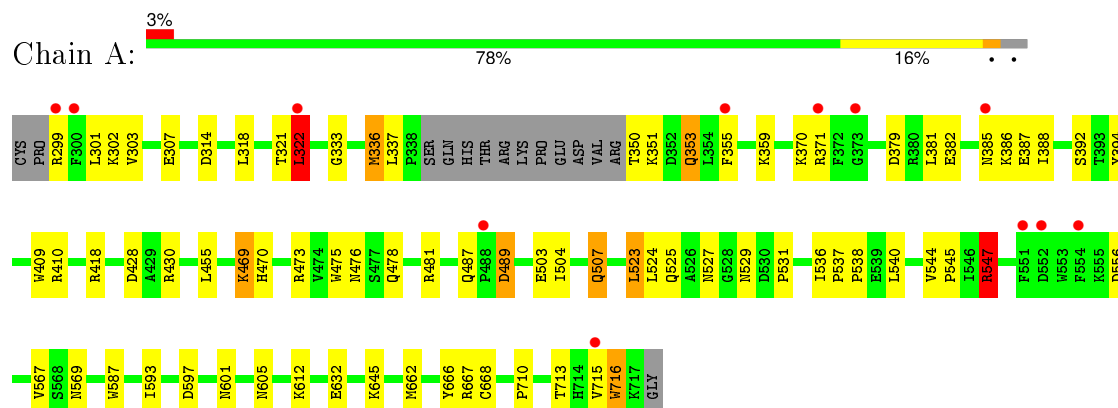
- Molecule 7 is water.

Mol	Chain	Residues	Atoms		ZeroOcc	AltConf
7	A	93	Total	O	0	0
			93	93		
7	B	133	Total	O	0	0
			133	133		

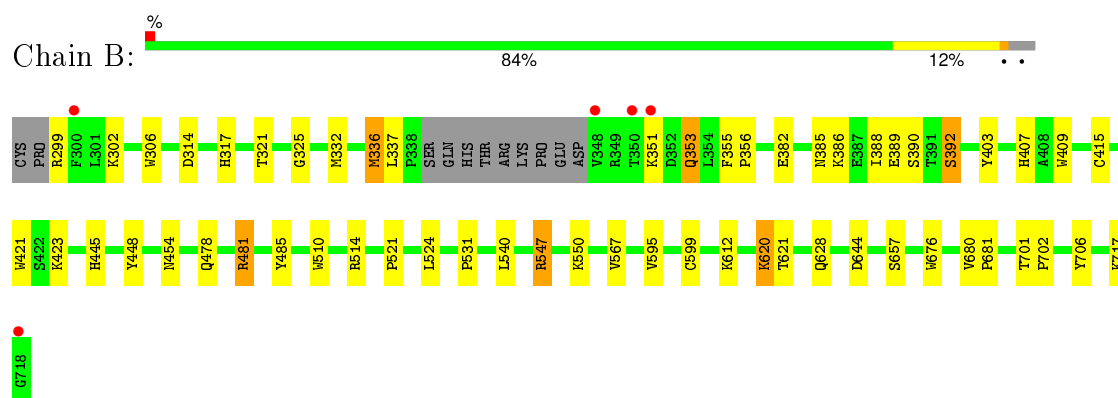
### 3 Residue-property plots [i](#)

These plots are drawn for all protein, RNA and DNA chains in the entry. The first graphic for a chain summarises the proportions of errors displayed in the second graphic. The second graphic shows the sequence view annotated by issues in geometry and electron density. Residues are color-coded according to the number of geometric quality criteria for which they contain at least one outlier: green = 0, yellow = 1, orange = 2 and red = 3 or more. A red dot above a residue indicates a poor fit to the electron density ( $RSRZ > 2$ ). Stretches of 2 or more consecutive residues without any outlier are shown as a green connector. Residues present in the sample, but not in the model, are shown in grey.

#### • Molecule 1: NITRIC OXIDE SYNTHASE, BRAIN



#### • Molecule 1: NITRIC OXIDE SYNTHASE, BRAIN



## 4 Data and refinement statistics

Property	Value	Source
Space group	P 21 21 21	Depositor
Cell constants a, b, c, $\alpha$ , $\beta$ , $\gamma$	51.72Å 110.64Å 164.57Å 90.00° 90.00° 90.00°	Depositor
Resolution (Å)	91.98 – 2.03 46.86 – 2.03	Depositor EDS
% Data completeness (in resolution range)	99.5 (91.98-2.03) 99.6 (46.86-2.03)	Depositor EDS
$R_{merge}$	0.08	Depositor
$R_{sym}$	(Not available)	Depositor
$\langle I/\sigma(I) \rangle$ <sup>1</sup>	1.98 (at 2.03Å)	Xtriage
Refinement program	REFMAC 5.8.0049	Depositor
R, $R_{free}$	0.185 , 0.234 0.184 , 0.234	Depositor DCC
$R_{free}$ test set	3059 reflections (5.21%)	DCC
Wilson B-factor (Å <sup>2</sup> )	36.4	Xtriage
Anisotropy	0.922	Xtriage
Bulk solvent $k_{sol}$ (e/Å <sup>3</sup> ), $B_{sol}$ (Å <sup>2</sup> )	0.37 , 45.8	EDS
Estimated twinning fraction	No twinning to report.	Xtriage
L-test for twinning <sup>2</sup>	$\langle  L  \rangle = 0.49$ , $\langle L^2 \rangle = 0.32$	Xtriage
Outliers	3 of 61974 reflections (0.005%)	Xtriage
$F_o, F_c$ correlation	0.97	EDS
Total number of atoms	7087	wwPDB-VP
Average B, all atoms (Å <sup>2</sup> )	51.0	wwPDB-VP

Xtriage's analysis on translational NCS is as follows: *The largest off-origin peak in the Patterson function is 4.92% of the height of the origin peak. No significant pseudotranslation is detected.*

<sup>1</sup>Intensities estimated from amplitudes.

<sup>2</sup>Theoretical values of  $\langle |L| \rangle$ ,  $\langle L^2 \rangle$  for acentric reflections are 0.5, 0.375 respectively for untwinned datasets, and 0.333, 0.2 for perfectly twinned datasets.



## 5 Model quality [i](#)

### 5.1 Standard geometry [i](#)

Bond lengths and bond angles in the following residue types are not validated in this section: HEM, ZN, ACT, H4B, S85

The Z score for a bond length (or angle) is the number of standard deviations the observed value is removed from the expected value. A bond length (or angle) with  $|Z| > 5$  is considered an outlier worth inspection. RMSZ is the root-mean-square of all Z scores of the bond lengths (or angles).

Mol	Chain	Bond lengths		Bond angles	
		RMSZ	$\# Z  > 5$	RMSZ	$\# Z  > 5$
1	A	0.83	2/3428 (0.1%)	0.92	8/4651 (0.2%)
1	B	0.88	1/3465 (0.0%)	0.89	3/4697 (0.1%)
All	All	0.86	3/6893 (0.0%)	0.90	11/9348 (0.1%)

All (3) bond length outliers are listed below:

Mol	Chain	Res	Type	Atoms	Z	Observed(Å)	Ideal(Å)
1	A	409	TRP	CE3-CZ3	5.78	1.48	1.38
1	B	676	TRP	CE3-CZ3	5.28	1.47	1.38
1	A	716	TRP	C-N	-5.02	1.22	1.34

All (11) bond angle outliers are listed below:

Mol	Chain	Res	Type	Atoms	Z	Observed(°)	Ideal(°)
1	A	547	ARG	NE-CZ-NH1	8.63	124.61	120.30
1	A	547	ARG	NE-CZ-NH2	-8.15	116.23	120.30
1	A	418	ARG	NE-CZ-NH1	-7.84	116.38	120.30
1	A	430	ARG	NE-CZ-NH2	-7.62	116.49	120.30
1	B	547	ARG	NE-CZ-NH1	6.26	123.43	120.30
1	B	644	ASP	CB-CG-OD1	5.87	123.59	118.30
1	B	547	ARG	NE-CZ-NH2	-5.50	117.55	120.30
1	A	428	ASP	CB-CG-OD2	-5.16	113.66	118.30
1	A	410	ARG	NE-CZ-NH2	-5.11	117.74	120.30
1	A	540	LEU	CB-CG-CD1	-5.09	102.34	111.00
1	A	428	ASP	CB-CG-OD1	5.08	122.87	118.30

There are no chirality outliers.

There are no planarity outliers.

## 5.2 Too-close contacts ⓘ

In the following table, the Non-H and H(model) columns list the number of non-hydrogen atoms and hydrogen atoms in the chain respectively. The H(added) column lists the number of hydrogen atoms added and optimized by MolProbity. The Clashes column lists the number of clashes within the asymmetric unit, whereas Symm-Clashes lists symmetry related clashes.

Mol	Chain	Non-H	H(model)	H(added)	Clashes	Symm-Clashes
1	A	3326	0	3237	43	0
1	B	3360	0	3280	33	0
2	A	43	0	30	5	0
2	B	43	0	30	11	0
3	A	17	0	15	0	0
3	B	17	0	15	1	0
4	A	23	0	25	6	0
4	B	23	0	25	5	0
5	A	4	0	3	0	0
5	B	4	0	3	0	0
6	B	1	0	0	0	0
7	A	93	0	0	0	0
7	B	133	0	0	1	0
All	All	7087	0	6663	87	0

The all-atom clashscore is defined as the number of clashes found per 1000 atoms (including hydrogen atoms). The all-atom clashscore for this structure is 6.

All (87) close contacts within the same asymmetric unit are listed below, sorted by their clash magnitude.

Atom-1	Atom-2	Interatomic distance (Å)	Clash overlap (Å)
1:B:299:ARG:HB3	1:B:299:ARG:NH1	1.95	0.81
1:B:299:ARG:HB3	1:B:299:ARG:CZ	2.13	0.78
1:A:350:THR:N	1:A:353:GLN:NE2	2.33	0.77
2:A:750:HEM:HMC2	2:A:750:HEM:HBC2	1.68	0.76
1:B:325:GLY:O	1:B:332:MET:HG3	1.89	0.71
1:A:382:GLU:HG3	1:A:386:LYS:HE2	1.77	0.67
1:B:389:GLU:HG3	1:B:390:SER:N	2.10	0.67
1:A:379:ASP:O	1:A:382:GLU:HB3	1.96	0.65
1:B:336:MET:HE2	3:B:760:H4B:H9	1.79	0.65
2:B:750:HEM:HBA2	4:B:800:S85:H092	1.82	0.62
1:A:523:LEU:HD22	1:A:531:PRO:HB2	1.80	0.62
1:A:567:VAL:HG21	4:A:800:S85:C13	2.30	0.61
1:A:667:ARG:NH1	1:A:668[A]:CYS:SG	2.74	0.60
1:B:388:ILE:O	1:B:392:SER:N	2.33	0.60

*Continued on next page...*

*Continued from previous page...*

Atom-1	Atom-2	Interatomic distance (Å)	Clash overlap (Å)
1:B:706:TYR:OH	2:B:750:HEM:O1D	2.19	0.59
2:B:750:HEM:HBA2	4:B:800:S85:C09	2.34	0.58
1:B:299:ARG:CB	1:B:299:ARG:CZ	2.82	0.58
2:B:750:HEM:HBC2	2:B:750:HEM:CMC	2.35	0.57
1:A:547:ARG:HD3	1:A:547:ARG:H	1.70	0.57
1:B:620:LYS:HE2	1:B:621:THR:H	1.70	0.56
1:A:487:GLN:HB2	1:A:489:ASP:HB3	1.87	0.56
1:A:351:LYS:HE2	1:A:392:SER:HB3	1.88	0.55
1:B:386:LYS:O	1:B:389:GLU:HG2	2.07	0.55
1:A:350:THR:N	1:A:353:GLN:HE22	2.06	0.53
2:A:750:HEM:HBD1	4:A:800:S85:C14	2.39	0.52
1:A:388:ILE:O	1:A:392:SER:HA	2.10	0.52
1:A:336:MET:HG3	1:B:306:TRP:NE1	2.25	0.52
1:B:353:GLN:O	1:B:356:PRO:HG2	2.10	0.50
1:B:409:TRP:CE3	1:B:421:TRP:HA	2.46	0.50
1:A:475:TRP:HB2	1:A:523:LEU:HB3	1.94	0.50
1:B:485:TYR:CZ	1:B:514:ARG:HA	2.47	0.50
1:A:299:ARG:HG2	1:A:318:LEU:HD21	1.94	0.50
1:A:567:VAL:HG21	4:A:800:S85:C12	2.42	0.49
1:A:593:ILE:HA	1:A:597:ASP:HB2	1.95	0.49
1:A:336:MET:HG3	1:B:306:TRP:CE2	2.48	0.49
2:A:750:HEM:HBD1	4:A:800:S85:C13	2.42	0.48
1:B:314:ASP:OD1	1:B:317:HIS:ND1	2.34	0.48
1:A:473:ARG:NH2	1:A:710:PRO:HD3	2.28	0.48
1:A:470:HIS:HB3	1:A:527:ASN:ND2	2.29	0.47
1:A:455:LEU:HD12	1:A:587:TRP:HB3	1.96	0.47
1:B:567:VAL:HG21	4:B:800:S85:C13	2.44	0.47
2:B:750:HEM:HMC1	2:B:750:HEM:HBC2	1.96	0.47
1:B:524:LEU:O	1:B:531:PRO:HA	2.15	0.46
1:A:524:LEU:O	1:A:531:PRO:HA	2.15	0.46
1:B:355:PHE:CE2	1:B:385:ASN:HB2	2.51	0.46
1:A:567:VAL:HG23	4:A:800:S85:H05	1.96	0.46
1:A:387:GLU:OE2	1:A:394:TYR:HA	2.16	0.46
2:A:750:HEM:CBA	4:A:800:S85:H092	2.45	0.45
1:A:359:LYS:HE2	1:A:381:LEU:HD21	1.96	0.45
2:B:750:HEM:CBA	4:B:800:S85:H092	2.46	0.45
1:B:336:MET:HE2	1:B:336:MET:HB2	1.88	0.45
1:B:445:HIS:C	1:B:445:HIS:CD2	2.91	0.44
1:A:632:GLU:OE2	1:B:628:GLN:NE2	2.50	0.44
1:B:510:TRP:CE2	1:B:521:PRO:HD3	2.52	0.44
1:A:537:PRO:HA	1:A:538:PRO:HD2	1.82	0.44

*Continued on next page...*

*Continued from previous page...*

Atom-1	Atom-2	Interatomic distance (Å)	Clash overlap (Å)
2:B:750:HEM:HMC1	2:B:750:HEM:CBC	2.48	0.44
1:A:299:ARG:O	1:A:299:ARG:HG2	2.17	0.44
2:A:750:HEM:HAD2	2:A:750:HEM:HHA	1.88	0.44
1:A:336:MET:HB3	1:A:336:MET:HE2	1.80	0.43
1:A:525:GLN:HG3	1:A:529:ASN:O	2.18	0.43
1:B:680:VAL:HA	1:B:681:PRO:HD3	1.89	0.43
1:B:403:TYR:CE1	1:B:407:HIS:CE1	3.07	0.43
1:B:550:LYS:HB3	1:B:550:LYS:HE3	1.88	0.43
2:B:750:HEM:C1C	4:B:800:S85:H073	2.54	0.43
1:B:595:VAL:O	1:B:599:CYS:HB2	2.19	0.43
1:B:448:TYR:CD1	1:B:448:TYR:C	2.92	0.42
1:A:355:PHE:CZ	1:A:385:ASN:HB2	2.54	0.42
1:A:503:GLU:O	1:A:507:GLN:HB3	2.19	0.42
1:A:314:ASP:HB2	1:A:666:TYR:HE2	1.84	0.42
2:B:750:HEM:HHC	2:B:750:HEM:HBB2	2.02	0.42
1:B:415:CYS:HB2	2:B:750:HEM:ND	2.34	0.42
1:B:388:ILE:O	1:B:392:SER:HA	2.20	0.42
1:A:487:GLN:CB	1:A:489:ASP:HB3	2.48	0.41
1:B:478:GLN:HB2	1:B:481:ARG:HG3	2.02	0.41
1:A:353:GLN:H	1:A:353:GLN:HG3	1.51	0.41
2:B:750:HEM:CBC	2:B:750:HEM:CMC	2.98	0.41
1:A:547:ARG:HD3	1:A:547:ARG:N	2.34	0.41
1:B:657:SER:HB2	7:B:2118:HOH:O	2.21	0.41
1:A:504:ILE:HA	1:A:507:GLN:HE21	1.85	0.41
1:A:301:LEU:HA	1:A:301:LEU:HD23	1.81	0.40
1:A:605:ASN:CG	1:A:605:ASN:O	2.57	0.40
1:A:536:ILE:O	1:A:537:PRO:C	2.58	0.40
1:A:544:VAL:HA	1:A:545:PRO:HD2	1.95	0.40
1:A:322:LEU:H	1:A:322:LEU:HG	1.66	0.40
1:B:701:THR:HA	1:B:702:PRO:C	2.41	0.40
1:A:478:GLN:HB2	1:A:481:ARG:HG3	2.04	0.40
1:A:469:LYS:HA	1:A:469:LYS:HD2	1.73	0.40

There are no symmetry-related clashes.

## 5.3 Torsion angles ⓘ

### 5.3.1 Protein backbone ⓘ

In the following table, the Percentiles column shows the percent Ramachandran outliers of the chain as a percentile score with respect to all X-ray entries followed by that with respect to entries

of similar resolution.

The Analysed column shows the number of residues for which the backbone conformation was analysed, and the total number of residues.

Mol	Chain	Analysed	Favoured	Allowed	Outliers	Percentiles	
1	A	407/422 (96%)	389 (96%)	14 (3%)	4 (1%)	19	10
1	B	411/422 (97%)	400 (97%)	11 (3%)	0	100	100
All	All	818/844 (97%)	789 (96%)	25 (3%)	4 (0%)	34	26

All (4) Ramachandran outliers are listed below:

Mol	Chain	Res	Type
1	A	489	ASP
1	A	716	TRP
1	A	322	LEU
1	A	333	GLY

### 5.3.2 Protein sidechains ⓘ

In the following table, the Percentiles column shows the percent sidechain outliers of the chain as a percentile score with respect to all X-ray entries followed by that with respect to entries of similar resolution.

The Analysed column shows the number of residues for which the sidechain conformation was analysed, and the total number of residues.

Mol	Chain	Analysed	Rotameric	Outliers	Percentiles	
1	A	366/377 (97%)	342 (93%)	24 (7%)	21	14
1	B	370/377 (98%)	354 (96%)	16 (4%)	35	30
All	All	736/754 (98%)	696 (95%)	40 (5%)	28	21

All (40) residues with a non-rotameric sidechain are listed below:

Mol	Chain	Res	Type
1	A	302	LYS
1	A	303	VAL
1	A	307[A]	GLU
1	A	307[B]	GLU
1	A	321	THR
1	A	322	LEU
1	A	336	MET
1	A	337	LEU

*Continued on next page...*

*Continued from previous page...*

Mol	Chain	Res	Type
1	A	353	GLN
1	A	370	LYS
1	A	371	ARG
1	A	469	LYS
1	A	476	ASN
1	A	507	GLN
1	A	523	LEU
1	A	547	ARG
1	A	556	ASP
1	A	569	ASN
1	A	601	ASN
1	A	612	LYS
1	A	645	LYS
1	A	662	MET
1	A	713	THR
1	A	715	VAL
1	B	302	LYS
1	B	321	THR
1	B	336	MET
1	B	337	LEU
1	B	351	LYS
1	B	353	GLN
1	B	382	GLU
1	B	392	SER
1	B	423	LYS
1	B	454	ASN
1	B	481	ARG
1	B	540	LEU
1	B	547	ARG
1	B	612	LYS
1	B	620	LYS
1	B	717	LYS

Some sidechains can be flipped to improve hydrogen bonding and reduce clashes. All (17) such sidechains are listed below:

Mol	Chain	Res	Type
1	A	353	GLN
1	A	385	ASN
1	A	425	GLN
1	A	436	HIS
1	A	454	ASN
1	A	507	GLN

*Continued on next page...*

*Continued from previous page...*

Mol	Chain	Res	Type
1	A	527	ASN
1	A	569	ASN
1	A	642	GLN
1	A	697	ASN
1	B	425	GLN
1	B	454	ASN
1	B	507	GLN
1	B	601	ASN
1	B	605	ASN
1	B	642	GLN
1	B	697	ASN

### 5.3.3 RNA [i](#)

There are no RNA molecules in this entry.

## 5.4 Non-standard residues in protein, DNA, RNA chains [i](#)

There are no non-standard protein/DNA/RNA residues in this entry.

## 5.5 Carbohydrates [i](#)

There are no carbohydrates in this entry.

## 5.6 Ligand geometry [i](#)

Of 9 ligands modelled in this entry, 1 is monoatomic - leaving 8 for Mogul analysis.

In the following table, the Counts columns list the number of bonds (or angles) for which Mogul statistics could be retrieved, the number of bonds (or angles) that are observed in the model and the number of bonds (or angles) that are defined in the chemical component dictionary. The Link column lists molecule types, if any, to which the group is linked. The Z score for a bond length (or angle) is the number of standard deviations the observed value is removed from the expected value. A bond length (or angle) with  $|Z| > 2$  is considered an outlier worth inspection. RMSZ is the root-mean-square of all Z scores of the bond lengths (or angles).

Mol	Type	Chain	Res	Link	Bond lengths			Bond angles		
					Counts	RMSZ	$\# Z  > 2$	Counts	RMSZ	$\# Z  > 2$
2	HEM	A	750	1	24,50,50	1.04	2 (8%)	16,82,82	2.18	3 (18%)
3	H4B	A	760	-	15,18,18	0.94	1 (6%)	12,26,26	2.89	7 (58%)

Mol	Type	Chain	Res	Link	Bond lengths			Bond angles		
					Counts	RMSZ	# Z  > 2	Counts	RMSZ	# Z  > 2
4	S85	A	800	-	24,24,24	1.06	1 (4%)	32,32,32	2.28	8 (25%)
5	ACT	A	860	-	0,3,3	0.00	-	0,3,3	0.00	-
2	HEM	B	750	1	24,50,50	1.21	3 (12%)	16,82,82	2.28	4 (25%)
3	H4B	B	760	-	15,18,18	1.21	2 (13%)	12,26,26	2.30	4 (33%)
4	S85	B	800	-	24,24,24	1.55	5 (20%)	32,32,32	2.22	7 (21%)
5	ACT	B	860	-	0,3,3	0.00	-	0,3,3	0.00	-

In the following table, the Chirals column lists the number of chiral outliers, the number of chiral centers analysed, the number of these observed in the model and the number defined in the chemical component dictionary. Similar counts are reported in the Torsion and Rings columns. '-' means no outliers of that kind were identified.

Mol	Type	Chain	Res	Link	Chirals	Torsions	Rings
2	HEM	A	750	1	-	0/6/54/54	0/0/8/8
3	H4B	A	760	-	-	0/8/17/17	0/2/2/2
4	S85	A	800	-	-	0/13/13/13	0/2/2/2
5	ACT	A	860	-	-	0/0/0/0	0/0/0/0
2	HEM	B	750	1	-	0/6/54/54	0/0/8/8
3	H4B	B	760	-	-	0/8/17/17	0/2/2/2
4	S85	B	800	-	-	0/13/13/13	0/2/2/2
5	ACT	B	860	-	-	0/0/0/0	0/0/0/0

All (14) bond length outliers are listed below:

Mol	Chain	Res	Type	Atoms	Z	Observed(Å)	Ideal(Å)
2	A	750	HEM	C3B-C2B	-3.25	1.36	1.40
2	B	750	HEM	C1B-NB	-2.62	1.33	1.36
2	A	750	HEM	C1A-CHA	-2.30	1.33	1.40
2	B	750	HEM	C3B-C2B	-2.26	1.37	1.40
4	B	800	S85	C08-C06	2.06	1.55	1.51
3	A	760	H4B	C2-N2	2.11	1.38	1.34
3	B	760	H4B	C7-N8	2.13	1.48	1.46
4	B	800	S85	C14-C15	2.19	1.43	1.39
4	B	800	S85	C16-C15	2.22	1.43	1.39
2	B	750	HEM	CAD-C3D	2.59	1.55	1.52
3	B	760	H4B	C4-N3	2.70	1.37	1.33
4	B	800	S85	C12-C13	2.82	1.42	1.37
4	A	800	S85	C14-C13	2.95	1.42	1.37
4	B	800	S85	C14-C13	3.21	1.43	1.37

All (33) bond angle outliers are listed below:



Mol	Chain	Res	Type	Atoms	Z	Observed(°)	Ideal(°)
2	B	750	HEM	CBA-CAA-C2A	-6.00	101.94	112.49
2	A	750	HEM	CBA-CAA-C2A	-5.44	102.93	112.49
4	B	800	S85	C05-C06-N01	-5.42	116.88	122.90
2	A	750	HEM	C3C-CAC-CBC	-5.17	116.01	126.40
4	A	800	S85	C05-C06-N01	-4.65	117.73	122.90
3	A	760	H4B	N3-C2-N1	-4.16	118.72	125.51
4	A	800	S85	C09-C11-C12	-3.87	114.13	120.55
2	B	750	HEM	C3C-CAC-CBC	-3.68	118.99	126.40
4	A	800	S85	C12-C13-C14	-3.47	119.05	123.54
4	B	800	S85	C12-C13-C14	-3.33	119.23	123.54
3	B	760	H4B	N3-C2-N1	-2.71	121.08	125.51
2	B	750	HEM	C3B-CAB-CBB	-2.41	121.54	126.40
2	B	750	HEM	C3B-C4B-NB	-2.28	106.27	109.21
3	A	760	H4B	N2-C2-N3	2.05	120.59	117.20
3	A	760	H4B	N2-C2-N1	2.10	120.67	117.20
4	B	800	S85	F17-C13-C14	2.28	121.30	118.22
4	B	800	S85	C04-C05-C06	2.52	121.87	120.28
3	B	760	H4B	C2-N1-C8A	2.67	120.63	114.63
4	A	800	S85	C09-C11-C16	2.68	125.01	120.55
4	B	800	S85	C08-C06-N01	2.88	120.09	115.71
2	A	750	HEM	CMC-C2C-C3C	3.05	131.05	125.09
3	B	760	H4B	C4-N3-C2	3.44	119.92	115.88
3	A	760	H4B	C4A-C8A-N8	3.74	122.22	118.26
4	A	800	S85	C15-C14-C13	3.92	121.91	118.04
3	A	760	H4B	C2-N1-C8A	4.00	123.61	114.63
3	A	760	H4B	C4-C4A-C8A	4.07	118.20	114.61
4	B	800	S85	C15-C14-C13	4.23	122.21	118.04
4	A	800	S85	C08-C06-N01	4.40	122.40	115.71
3	A	760	H4B	C4-N3-C2	4.76	121.46	115.88
4	A	800	S85	F17-C13-C14	4.79	124.67	118.22
3	B	760	H4B	C4-C4A-C8A	5.17	119.16	114.61
4	A	800	S85	C02-N01-C06	5.25	122.29	118.20
4	B	800	S85	C02-N01-C06	7.60	124.13	118.20

There are no chirality outliers.

There are no torsion outliers.

There are no ring outliers.

5 monomers are involved in 21 short contacts:

Mol	Chain	Res	Type	Clashes	Symm-Clashes
2	A	750	HEM	5	0
4	A	800	S85	6	0

*Continued on next page...*

*Continued from previous page...*

Mol	Chain	Res	Type	Clashes	Symm-Clashes
2	B	750	HEM	11	0
3	B	760	H4B	1	0
4	B	800	S85	5	0

## 5.7 Other polymers [i](#)

There are no such residues in this entry.

## 5.8 Polymer linkage issues [i](#)

There are no chain breaks in this entry.

## 6 Fit of model and data ⓘ

### 6.1 Protein, DNA and RNA chains ⓘ

In the following table, the column labelled ‘#RSRZ> 2’ contains the number (and percentage) of RSRZ outliers, followed by percent RSRZ outliers for the chain as percentile scores relative to all X-ray entries and entries of similar resolution. The OWAB column contains the minimum, median, 95<sup>th</sup> percentile and maximum values of the occupancy-weighted average B-factor per residue. The column labelled ‘Q< 0.9’ lists the number of (and percentage) of residues with an average occupancy less than 0.9.

Mol	Chain	Analysed	<RSRZ>	#RSRZ>2	OWAB(Å <sup>2</sup> )	Q<0.9
1	A	408/422 (96%)	0.23	12 (2%) 55 57	32, 52, 89, 122	0
1	B	411/422 (97%)	0.03	5 (1%) 81 82	32, 45, 72, 93	0
All	All	819/844 (97%)	0.13	17 (2%) 67 68	32, 48, 84, 122	0

All (17) RSRZ outliers are listed below:

Mol	Chain	Res	Type	RSRZ
1	B	348	VAL	3.9
1	A	488	PRO	3.8
1	B	300	PHE	3.7
1	A	355	PHE	3.7
1	A	551	PHE	2.9
1	B	718	GLY	2.9
1	A	373	GLY	2.7
1	A	554	PHE	2.7
1	A	322	LEU	2.6
1	A	300	PHE	2.5
1	B	351	LYS	2.4
1	B	350	THR	2.4
1	A	715	VAL	2.3
1	A	371	ARG	2.3
1	A	552	ASP	2.2
1	A	385	ASN	2.2
1	A	299	ARG	2.2

### 6.2 Non-standard residues in protein, DNA, RNA chains ⓘ

There are no non-standard protein/DNA/RNA residues in this entry.

### 6.3 Carbohydrates [i](#)

There are no carbohydrates in this entry.

### 6.4 Ligands [i](#)

In the following table, the Atoms column lists the number of modelled atoms in the group and the number defined in the chemical component dictionary. LLDF column lists the quality of electron density of the group with respect to its neighbouring residues in protein, DNA or RNA chains. The B-factors column lists the minimum, median, 95<sup>th</sup> percentile and maximum values of B factors of atoms in the group. The column labelled 'Q< 0.9' lists the number of atoms with occupancy less than 0.9.

Mol	Type	Chain	Res	Atoms	RSCC	RSR	LLDF	B-factors(Å <sup>2</sup> )	Q<0.9
5	ACT	A	860	4/4	0.98	0.17	5.24	63,66,67,70	0
4	S85	A	800	23/23	0.94	0.18	4.38	35,54,78,87	0
5	ACT	B	860	4/4	0.98	0.18	2.84	56,56,56,58	0
4	S85	B	800	23/23	0.93	0.15	1.24	34,46,69,75	0
2	HEM	B	750	43/43	0.98	0.15	0.91	31,37,51,58	0
6	ZN	B	900	1/1	0.99	0.11	0.75	42,42,42,42	0
2	HEM	A	750	43/43	0.98	0.13	0.63	33,39,50,63	0
3	H4B	A	760	17/17	0.94	0.12	-0.25	34,40,43,47	0
3	H4B	B	760	17/17	0.97	0.13	-0.32	34,41,44,47	0

### 6.5 Other polymers [i](#)

There are no such residues in this entry.