



Full wwPDB X-ray Structure Validation Report ⓘ

Jan 31, 2016 – 10:38 PM GMT

PDB ID : 1UIP
Title : ADENOSINE DEAMINASE (HIS 238 GLU MUTANT)
Authors : Wilson, D.K.; Quioco, F.A.
Deposited on : 1996-08-30
Resolution : 2.40 Å(reported)

This is a Full wwPDB X-ray Structure Validation Report for a publicly released PDB entry.
We welcome your comments at validation@mail.wwpdb.org
A user guide is available at
<http://wwpdb.org/validation/2016/XrayValidationReportHelp>
with specific help available everywhere you see the ⓘ symbol.

The following versions of software and data (see [references ⓘ](#)) were used in the production of this report:

MolProbity : 4.02b-467
Mogul : 1.7 (RC4), CSD as536be (2015)
Xtriage (Phenix) : **NOT EXECUTED**
EDS : **NOT EXECUTED**
Percentile statistics : 20151230.v01 (using entries in the PDB archive December 30th 2015)
Ideal geometry (proteins) : Engh & Huber (2001)
Ideal geometry (DNA, RNA) : Parkinson et al. (1996)
Validation Pipeline (wwPDB-VP) : trunk26865

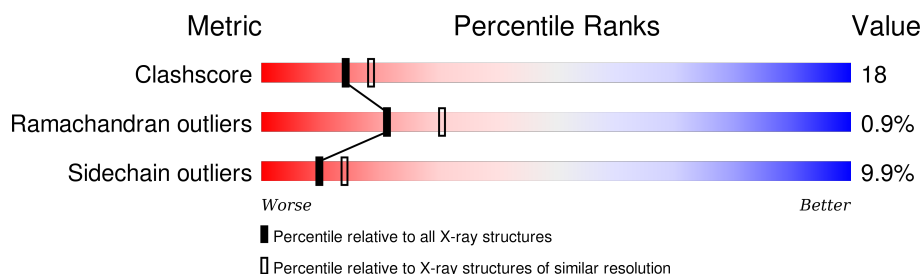
1 Overall quality at a glance

The following experimental techniques were used to determine the structure:

X-RAY DIFFRACTION

The reported resolution of this entry is 2.40 Å.

Percentile scores (ranging between 0-100) for global validation metrics of the entry are shown in the following graphic. The table shows the number of entries on which the scores are based.



Metric	Whole archive (#Entries)	Similar resolution (#Entries, resolution range(Å))
Clashscore	102246	3407 (2.40-2.40)
Ramachandran outliers	100387	3351 (2.40-2.40)
Sidechain outliers	100360	3352 (2.40-2.40)

The table below summarises the geometric issues observed across the polymeric chains and their fit to the electron density. The red, orange, yellow and green segments on the lower bar indicate the fraction of residues that contain outliers for ≥ 3 , 2, 1 and 0 types of geometric quality criteria. A grey segment represents the fraction of residues that are not modelled. The numeric value for each fraction is indicated below the corresponding segment, with a dot representing fractions $\leq 5\%$. The upper red bar (where present) indicates the fraction of residues that have poor fit to the electron density. The numeric value is given above the bar.

Note EDS was not executed.

Mol	Chain	Length	Quality of chain
1	A	349	

2 Entry composition [i](#)

There are 4 unique types of molecules in this entry. The entry contains 3009 atoms, of which 0 are hydrogens and 0 are deuteriums.

In the tables below, the ZeroOcc column contains the number of atoms modelled with zero occupancy, the AltConf column contains the number of residues with at least one atom in alternate conformation and the Trace column contains the number of residues modelled with at most 2 atoms.

- Molecule 1 is a protein called ADENOSINE DEAMINASE.

Mol	Chain	Residues	Atoms					ZeroOcc	AltConf	Trace
1	A	349	Total	C	N	O	S	0	0	0
			2789	1777	468	530	14			

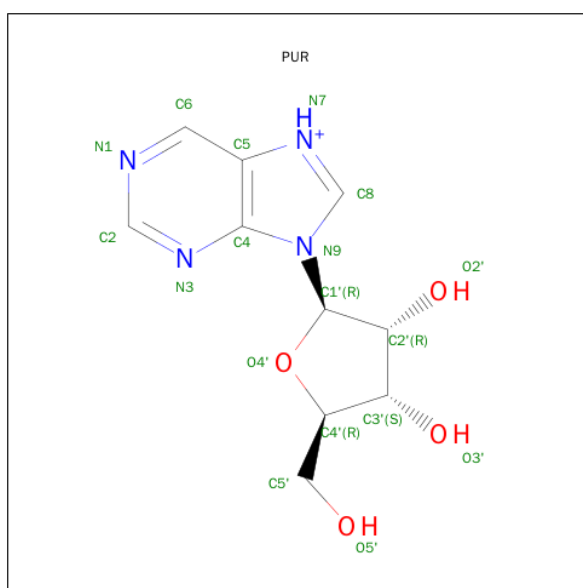
There is a discrepancy between the modelled and reference sequences:

Chain	Residue	Modelled	Actual	Comment	Reference
A	238	GLU	HIS	ENGINEERED	UNP P03958

- Molecule 2 is ZINC ION (three-letter code: ZN) (formula: Zn).

Mol	Chain	Residues	Atoms		ZeroOcc	AltConf
2	A	1	Total	Zn	0	0
			1	1		

- Molecule 3 is PURINE RIBOSIDE (three-letter code: PUR) (formula: C₁₀H₁₃N₄O₄).



Mol	Chain	Residues	Atoms				ZeroOcc	AltConf
3	A	1	Total	C	N	O	0	0
			18	10	4	4		

- Molecule 4 is water.

Mol	Chain	Residues	Atoms		ZeroOcc	AltConf
4	A	201	Total	O	0	0
			201	201		

4 Data and refinement statistics

Xtriage (Phenix) and EDS were not executed - this section will therefore be incomplete.

Property	Value	Source
Space group	C 1 2 1	Depositor
Cell constants a, b, c, α , β , γ	99.11Å 93.81Å 72.10Å 90.00° 126.83° 90.00°	Depositor
Resolution (Å)	10.00 – 2.40	Depositor
% Data completeness (in resolution range)	(Not available) (10.00-2.40)	Depositor
R_{merge}	0.06	Depositor
R_{sym}	(Not available)	Depositor
Refinement program	X-PLOR	Depositor
R, R_{free}	0.203 , (Not available)	Depositor
Estimated twinning fraction	No twinning to report.	Xtriage
Total number of atoms	3009	wwPDB-VP
Average B, all atoms (Å ²)	24.0	wwPDB-VP

5 Model quality [i](#)

5.1 Standard geometry [i](#)

Bond lengths and bond angles in the following residue types are not validated in this section: ZN, PUR

The Z score for a bond length (or angle) is the number of standard deviations the observed value is removed from the expected value. A bond length (or angle) with $|Z| > 5$ is considered an outlier worth inspection. RMSZ is the root-mean-square of all Z scores of the bond lengths (or angles).

Mol	Chain	Bond lengths		Bond angles	
		RMSZ	$\# Z > 5$	RMSZ	$\# Z > 5$
1	A	0.62	0/2852	0.83	5/3860 (0.1%)

There are no bond length outliers.

All (5) bond angle outliers are listed below:

Mol	Chain	Res	Type	Atoms	Z	Observed(°)	Ideal(°)
1	A	325	LEU	CA-CB-CG	7.82	133.28	115.30
1	A	295	ASP	CB-CG-OD1	6.72	124.35	118.30
1	A	235	ARG	NE-CZ-NH1	5.71	123.16	120.30
1	A	154	CYS	N-CA-C	-5.16	97.07	111.00
1	A	38	LEU	CA-CB-CG	5.02	126.85	115.30

There are no chirality outliers.

There are no planarity outliers.

5.2 Too-close contacts [i](#)

In the following table, the Non-H and H(model) columns list the number of non-hydrogen atoms and hydrogen atoms in the chain respectively. The H(added) column lists the number of hydrogen atoms added and optimized by MolProbity. The Clashes column lists the number of clashes within the asymmetric unit, whereas Symm-Clashes lists symmetry related clashes.

Mol	Chain	Non-H	H(model)	H(added)	Clashes	Symm-Clashes
1	A	2789	0	2756	100	0
2	A	1	0	0	0	0
3	A	18	0	13	0	0
4	A	201	0	0	2	0
All	All	3009	0	2769	100	0

The all-atom clashscore is defined as the number of clashes found per 1000 atoms (including hydrogen atoms). The all-atom clashscore for this structure is 18.

All (100) close contacts within the same asymmetric unit are listed below, sorted by their clash magnitude.

Atom-1	Atom-2	Interatomic distance (Å)	Clash overlap (Å)
1:A:103:SER:HB2	1:A:155:MET:CE	2.15	0.76
1:A:103:SER:HB2	1:A:155:MET:HE3	1.68	0.76
1:A:217:GLU:HG3	1:A:218:VAL:HG13	1.69	0.73
1:A:251:ARG:O	1:A:255:GLU:HG3	1.88	0.73
1:A:109:ASN:C	1:A:109:ASN:HD22	1.94	0.71
1:A:25:GLU:HG3	1:A:43:VAL:HG11	1.71	0.70
1:A:251:ARG:O	1:A:254:LYS:HD3	1.92	0.70
1:A:346:ARG:HD3	1:A:350:GLU:OE2	1.92	0.69
1:A:294:THR:HG23	1:A:297:PRO:HD3	1.74	0.68
1:A:86:PHE:CZ	1:A:100:VAL:HG13	2.28	0.67
1:A:125:THR:HG22	1:A:128:ASP:H	1.61	0.65
1:A:162:SER:OG	1:A:197:HIS:HD2	1.79	0.65
1:A:28:LEU:HD13	1:A:46:LEU:HD22	1.78	0.65
1:A:166:LEU:HB2	1:A:180:MET:HE1	1.78	0.64
1:A:289:ASN:ND2	1:A:328:ASN:HB3	2.13	0.63
1:A:191:SER:HA	1:A:194:PHE:CE2	2.34	0.62
1:A:135:GLN:O	1:A:139:GLU:HG3	2.00	0.61
1:A:7:PHE:HB2	1:A:322:PHE:CD2	2.36	0.61
1:A:13:GLU:OE2	1:A:294:THR:HB	1.99	0.61
1:A:322:PHE:HA	1:A:325:LEU:HD13	1.81	0.61
1:A:131:ASP:O	1:A:135:GLN:HG3	2.02	0.60
1:A:51:GLY:HA3	1:A:301:LYS:HD3	1.85	0.59
1:A:174:GLN:C	1:A:176:THR:H	2.06	0.58
1:A:134:ASN:ND2	1:A:176:THR:OG1	2.35	0.58
1:A:210:HIS:CD2	1:A:334:PHE:HB3	2.39	0.57
1:A:229:ASP:OD1	1:A:251:ARG:NH2	2.38	0.57
1:A:264:TRP:HA	1:A:264:TRP:CE3	2.39	0.56
1:A:268:LEU:HD23	1:A:300:PHE:HD1	1.71	0.56
1:A:337:GLU:OE2	1:A:341:LYS:HE3	2.07	0.55
1:A:198:VAL:O	1:A:202:GLU:HG3	2.08	0.55
1:A:264:TRP:HA	1:A:264:TRP:HE3	1.72	0.54
1:A:103:SER:HB2	1:A:155:MET:HE2	1.90	0.54
1:A:81:ARG:O	1:A:85:GLU:HG3	2.07	0.54
1:A:162:SER:OG	1:A:197:HIS:CD2	2.62	0.53
1:A:38:LEU:CD1	1:A:71:VAL:HG11	2.38	0.53
1:A:290:TYR:HH	1:A:317:PHE:HE2	1.56	0.53
1:A:147:LYS:HE3	4:A:439:HOH:O	2.09	0.53

Continued on next page...

Continued from previous page...

Atom-1	Atom-2	Interatomic distance (Å)	Clash overlap (Å)
1:A:11:LYS:NZ	4:A:406:HOH:O	2.41	0.52
1:A:58:LEU:HB3	1:A:59:PRO:HD3	1.91	0.51
1:A:330:ALA:HB1	1:A:343:LEU:HD13	1.91	0.51
1:A:268:LEU:HD23	1:A:300:PHE:CD1	2.46	0.51
1:A:109:ASN:ND2	1:A:109:ASN:C	2.64	0.50
1:A:335:LEU:HG	1:A:339:GLU:HB2	1.94	0.49
1:A:42:THR:HG22	1:A:45:GLU:H	1.77	0.49
1:A:90:LYS:HA	1:A:90:LYS:HD3	1.49	0.49
1:A:38:LEU:HD13	1:A:71:VAL:HG11	1.94	0.49
1:A:294:THR:CG2	1:A:297:PRO:HD3	2.41	0.49
1:A:166:LEU:CB	1:A:180:MET:HE1	2.43	0.48
1:A:290:TYR:OH	1:A:317:PHE:CE2	2.66	0.48
1:A:6:ALA:HB3	1:A:308:TYR:HB3	1.95	0.48
1:A:86:PHE:CE2	1:A:100:VAL:HG13	2.47	0.48
1:A:281:VAL:CG2	1:A:315:MET:HG2	2.42	0.48
1:A:273:ASP:OD1	1:A:275:LYS:HE3	2.13	0.48
1:A:98:VAL:HG13	1:A:148:VAL:HG13	1.95	0.48
1:A:217:GLU:HG3	1:A:218:VAL:N	2.29	0.47
1:A:321:GLU:OE2	1:A:324:ARG:NH1	2.48	0.47
1:A:81:ARG:HD3	1:A:85:GLU:OE2	2.15	0.47
1:A:26:THR:OG1	1:A:81:ARG:NH1	2.49	0.46
1:A:325:LEU:HD22	1:A:326:ASN:N	2.31	0.46
1:A:169:CYS:HA	1:A:177:VAL:HG11	1.97	0.46
1:A:88:GLU:HB2	1:A:144:PHE:CE2	2.52	0.46
1:A:174:GLN:C	1:A:176:THR:N	2.70	0.45
1:A:7:PHE:CZ	1:A:9:LYS:HB2	2.51	0.45
1:A:267:TYR:HD1	1:A:274:PRO:HG3	1.81	0.45
1:A:49:ILE:HG22	1:A:67:TYR:CE2	2.52	0.45
1:A:46:LEU:HD12	1:A:46:LEU:HA	1.80	0.44
1:A:287:LYS:HD3	1:A:287:LYS:HA	1.86	0.43
1:A:156:ARG:O	1:A:197:HIS:HE1	2.00	0.43
1:A:263:PRO:HD2	1:A:307:ASP:OD2	2.19	0.43
1:A:228:VAL:HA	1:A:233:THR:HG22	2.00	0.43
1:A:28:LEU:HD11	1:A:41:ASP:HA	2.00	0.43
1:A:116:PRO:HB2	1:A:117:TRP:CD1	2.54	0.43
1:A:264:TRP:CZ3	1:A:267:TYR:CD2	3.07	0.43
1:A:101:ARG:HA	1:A:151:ILE:O	2.19	0.43
1:A:56:LEU:HB3	1:A:57:SER:H	1.68	0.43
1:A:186:GLU:OE2	1:A:219:GLY:HA3	2.18	0.43
1:A:57:SER:O	1:A:61:PHE:HB3	2.18	0.42
1:A:166:LEU:HD22	1:A:200:ALA:O	2.20	0.42

Continued on next page...

Continued from previous page...

Atom-1	Atom-2	Interatomic distance (Å)	Clash overlap (Å)
1:A:220:SER:HB2	1:A:221:PRO:HD2	2.01	0.42
1:A:296:ASP:HB2	1:A:300:PHE:CE2	2.54	0.42
1:A:102:TYR:OH	1:A:130:VAL:HA	2.19	0.42
1:A:290:TYR:OH	1:A:317:PHE:HE2	2.00	0.42
1:A:191:SER:HA	1:A:194:PHE:CZ	2.55	0.42
1:A:313:LYS:HB2	1:A:313:LYS:NZ	2.35	0.41
1:A:181:ASP:OD2	1:A:214:HIS:CE1	2.73	0.41
1:A:69:MET:N	1:A:70:PRO:CD	2.83	0.41
1:A:321:GLU:HA	1:A:321:GLU:OE1	2.20	0.41
1:A:28:LEU:HA	1:A:28:LEU:HD12	1.91	0.41
1:A:253:LEU:HA	1:A:253:LEU:HD12	1.89	0.41
1:A:222:GLU:O	1:A:226:GLU:HG3	2.20	0.41
1:A:173:ASN:O	1:A:175:LYS:HG3	2.21	0.41
1:A:15:HIS:HB3	1:A:293:ASN:CB	2.50	0.41
1:A:267:TYR:CD1	1:A:274:PRO:HG3	2.56	0.41
1:A:309:GLN:O	1:A:313:LYS:HB2	2.21	0.41
1:A:141:GLU:HG2	1:A:146:ILE:O	2.21	0.41
1:A:267:TYR:CD2	1:A:268:LEU:HD13	2.55	0.41
1:A:346:ARG:O	1:A:350:GLU:HG3	2.20	0.40
1:A:156:ARG:HA	1:A:197:HIS:CE1	2.56	0.40
1:A:305:ASP:O	1:A:309:GLN:HG2	2.22	0.40
1:A:304:LEU:O	1:A:308:TYR:HD1	2.03	0.40

There are no symmetry-related clashes.

5.3 Torsion angles [i](#)

5.3.1 Protein backbone [i](#)

In the following table, the Percentiles column shows the percent Ramachandran outliers of the chain as a percentile score with respect to all X-ray entries followed by that with respect to entries of similar resolution.

The Analysed column shows the number of residues for which the backbone conformation was analysed, and the total number of residues.

Mol	Chain	Analysed	Favoured	Allowed	Outliers	Percentiles	
1	A	347/349 (99%)	326 (94%)	18 (5%)	3 (1%)	21	30

All (3) Ramachandran outliers are listed below:

Mol	Chain	Res	Type
1	A	121	GLU
1	A	176	THR
1	A	295	ASP

5.3.2 Protein sidechains ⓘ

In the following table, the Percentiles column shows the percent sidechain outliers of the chain as a percentile score with respect to all X-ray entries followed by that with respect to entries of similar resolution.

The Analysed column shows the number of residues for which the sidechain conformation was analysed, and the total number of residues.

Mol	Chain	Analysed	Rotameric	Outliers	Percentiles	
1	A	304/304 (100%)	274 (90%)	30 (10%)	10	14

All (30) residues with a non-rotameric sidechain are listed below:

Mol	Chain	Res	Type
1	A	14	LEU
1	A	38	LEU
1	A	53	ASP
1	A	61	PHE
1	A	81	ARG
1	A	100	VAL
1	A	109	ASN
1	A	111	LYS
1	A	112	VAL
1	A	125	THR
1	A	128	ASP
1	A	132	LEU
1	A	176	THR
1	A	193	LEU
1	A	195	PRO
1	A	217	GLU
1	A	221	PRO
1	A	231	LEU
1	A	254	LYS
1	A	264	TRP
1	A	268	LEU
1	A	289	ASN
1	A	292	LEU
1	A	294	THR

Continued on next page...

Continued from previous page...

Mol	Chain	Res	Type
1	A	313	LYS
1	A	325	LEU
1	A	335	LEU
1	A	337	GLU
1	A	343	LEU
1	A	346	ARG

Some sidechains can be flipped to improve hydrogen bonding and reduce clashes. All (4) such sidechains are listed below:

Mol	Chain	Res	Type
1	A	109	ASN
1	A	134	ASN
1	A	197	HIS
1	A	289	ASN

5.3.3 RNA [i](#)

There are no RNA molecules in this entry.

5.4 Non-standard residues in protein, DNA, RNA chains [i](#)

There are no non-standard protein/DNA/RNA residues in this entry.

5.5 Carbohydrates [i](#)

There are no carbohydrates in this entry.

5.6 Ligand geometry [i](#)

Of 2 ligands modelled in this entry, 1 is monoatomic - leaving 1 for Mogul analysis.

In the following table, the Counts columns list the number of bonds (or angles) for which Mogul statistics could be retrieved, the number of bonds (or angles) that are observed in the model and the number of bonds (or angles) that are defined in the chemical component dictionary. The Link column lists molecule types, if any, to which the group is linked. The Z score for a bond length (or angle) is the number of standard deviations the observed value is removed from the expected value. A bond length (or angle) with $|Z| > 2$ is considered an outlier worth inspection. RMSZ is the root-mean-square of all Z scores of the bond lengths (or angles).

Mol	Type	Chain	Res	Link	Bond lengths			Bond angles		
					Counts	RMSZ	# Z > 2	Counts	RMSZ	# Z > 2
3	PUR	A	353	-	15,20,20	1.95	4 (26%)	16,29,29	2.75	7 (43%)

In the following table, the Chirals column lists the number of chiral outliers, the number of chiral centers analysed, the number of these observed in the model and the number defined in the chemical component dictionary. Similar counts are reported in the Torsion and Rings columns. '-' means no outliers of that kind were identified.

Mol	Type	Chain	Res	Link	Chirals	Torsions	Rings
3	PUR	A	353	-	-	0/2/22/22	0/3/3/3

All (4) bond length outliers are listed below:

Mol	Chain	Res	Type	Atoms	Z	Observed(Å)	Ideal(Å)
3	A	353	PUR	C5-C4	-3.02	1.33	1.40
3	A	353	PUR	O4'-C4'	-2.98	1.38	1.45
3	A	353	PUR	C3'-C4'	3.63	1.62	1.53
3	A	353	PUR	C6-N1	4.64	1.40	1.32

All (7) bond angle outliers are listed below:

Mol	Chain	Res	Type	Atoms	Z	Observed(°)	Ideal(°)
3	A	353	PUR	C2'-C3'-C4'	-5.54	91.22	102.61
3	A	353	PUR	N1-C2-N3	-5.52	121.02	127.82
3	A	353	PUR	C2'-C1'-N9	-4.03	108.14	114.29
3	A	353	PUR	C5-C4-N3	-2.39	121.37	125.77
3	A	353	PUR	C4'-O4'-C1'	-2.27	107.22	109.72
3	A	353	PUR	O4'-C4'-C3'	3.05	111.29	105.15
3	A	353	PUR	C6-N1-C2	3.87	121.24	115.89

There are no chirality outliers.

There are no torsion outliers.

There are no ring outliers.

No monomer is involved in short contacts.

5.7 Other polymers ⓘ

There are no such residues in this entry.

5.8 Polymer linkage issues ⓘ

There are no chain breaks in this entry.

6 Fit of model and data [i](#)

6.1 Protein, DNA and RNA chains [i](#)

EDS was not executed - this section will therefore be empty.

6.2 Non-standard residues in protein, DNA, RNA chains [i](#)

EDS was not executed - this section will therefore be empty.

6.3 Carbohydrates [i](#)

EDS was not executed - this section will therefore be empty.

6.4 Ligands [i](#)

EDS was not executed - this section will therefore be empty.

6.5 Other polymers [i](#)

EDS was not executed - this section will therefore be empty.