



# wwPDB X-ray Structure Validation Summary Report ⓘ

May 19, 2016 – 05:42 PM EDT

PDB ID : 4UI5  
Title : Crystal structure of human tankyrase 2 in complex with TA-41  
Authors : Haikarainen, T.; Lehtio, L.  
Deposited on : 2015-03-27  
Resolution : 1.65 Å(reported)

This is a wwPDB X-ray Structure Validation Summary Report for a publicly released PDB entry.  
We welcome your comments at [validation@mail.wwpdb.org](mailto:validation@mail.wwpdb.org)  
A user guide is available at  
<http://wwpdb.org/validation/2016/XrayValidationReportHelp>  
with specific help available everywhere you see the ⓘ symbol.

---

The following versions of software and data (see [references ⓘ](#)) were used in the production of this report:

MolProbity : 4.02b-467  
Mogul : 1.7.1 (RC1), CSD as537be (2016)  
Xtriage (Phenix) : 1.9-1692  
EDS : rb-20027457  
Percentile statistics : 20151230.v01 (using entries in the PDB archive December 30th 2015)  
Refmac : 5.8.0135  
CCP4 : 6.5.0  
Ideal geometry (proteins) : Engh & Huber (2001)  
Ideal geometry (DNA, RNA) : Parkinson et al. (1996)  
Validation Pipeline (wwPDB-VP) : rb-20027457

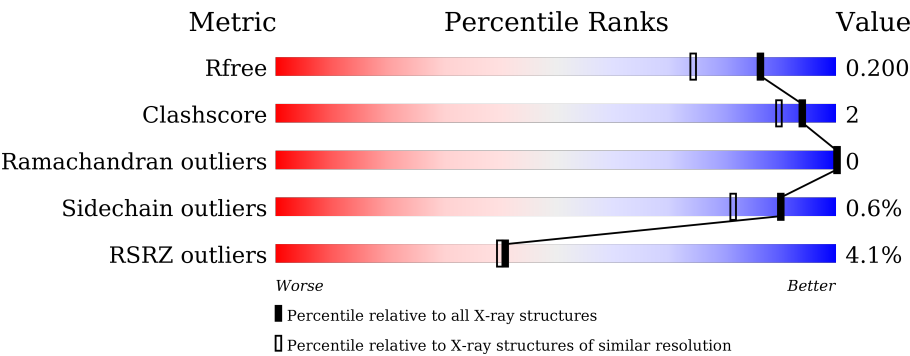
# 1 Overall quality at a glance i

The following experimental techniques were used to determine the structure:

*X-RAY DIFFRACTION*

The reported resolution of this entry is 1.65 Å.

Percentile scores (ranging between 0-100) for global validation metrics of the entry are shown in the following graphic. The table shows the number of entries on which the scores are based.



Metric	Whole archive (#Entries)	Similar resolution (#Entries, resolution range(Å))
$R_{free}$	91344	1226 (1.66-1.66)
Clashscore	102246	1323 (1.66-1.66)
Ramachandran outliers	100387	1295 (1.66-1.66)
Sidechain outliers	100360	1295 (1.66-1.66)
RSRZ outliers	91569	1227 (1.66-1.66)

The table below summarises the geometric issues observed across the polymeric chains and their fit to the electron density. The red, orange, yellow and green segments on the lower bar indicate the fraction of residues that contain outliers for  $\geq 3$ , 2, 1 and 0 types of geometric quality criteria. A grey segment represents the fraction of residues that are not modelled. The numeric value for each fraction is indicated below the corresponding segment, with a dot representing fractions  $\leq 5\%$ . The upper red bar (where present) indicates the fraction of residues that have poor fit to the electron density. The numeric value is given above the bar.

Mol	Chain	Length	Quality of chain
1	A	191	<div><div>%</div><div><div></div><div>80%</div><div></div><div>16%</div></div><div></div></div>
1	B	191	<div><div>3%</div><div><div></div><div>82%</div><div></div><div>15%</div></div><div></div></div>
2	C	48	<div><div>10%</div><div><div></div><div>92%</div><div></div><div>6%</div></div><div></div></div>
2	D	48	<div><div>13%</div><div><div></div><div>96%</div><div></div><div></div></div><div></div></div>

The following table lists non-polymeric compounds, carbohydrate monomers and non-standard residues in protein, DNA, RNA chains that are outliers for geometric or electron-density-fit crite-

ria:

Mol	Type	Chain	Res	Chirality	Geometry	Clashes	Electron density
6	GOL	A	2117	-	-	-	X
6	GOL	A	2118	-	-	-	X

## 2 Entry composition

There are 7 unique types of molecules in this entry. The entry contains 3989 atoms, of which 0 are hydrogens and 0 are deuteriums.

In the tables below, the ZeroOcc column contains the number of atoms modelled with zero occupancy, the AltConf column contains the number of residues with at least one atom in alternate conformation and the Trace column contains the number of residues modelled with at most 2 atoms.

- Molecule 1 is a protein called TANKYRASE-2.

Mol	Chain	Residues	Atoms					ZeroOcc	AltConf	Trace
1	A	161	Total	C	N	O	S	0	6	0
			1325	836	242	238	9			
1	B	162	Total	C	N	O	S	0	3	0
			1323	829	246	239	9			

There are 46 discrepancies between the modelled and reference sequences:

Chain	Residue	Modelled	Actual	Comment	Reference
A	923	MET	-	EXPRESSION TAG	UNP Q9H2K2
A	924	HIS	-	EXPRESSION TAG	UNP Q9H2K2
A	925	HIS	-	EXPRESSION TAG	UNP Q9H2K2
A	926	HIS	-	EXPRESSION TAG	UNP Q9H2K2
A	927	HIS	-	EXPRESSION TAG	UNP Q9H2K2
A	928	HIS	-	EXPRESSION TAG	UNP Q9H2K2
A	929	HIS	-	EXPRESSION TAG	UNP Q9H2K2
A	930	SER	-	EXPRESSION TAG	UNP Q9H2K2
A	931	SER	-	EXPRESSION TAG	UNP Q9H2K2
A	932	GLY	-	EXPRESSION TAG	UNP Q9H2K2
A	933	VAL	-	EXPRESSION TAG	UNP Q9H2K2
A	934	ASP	-	EXPRESSION TAG	UNP Q9H2K2
A	935	LEU	-	EXPRESSION TAG	UNP Q9H2K2
A	936	GLY	-	EXPRESSION TAG	UNP Q9H2K2
A	937	THR	-	EXPRESSION TAG	UNP Q9H2K2
A	938	GLU	-	EXPRESSION TAG	UNP Q9H2K2
A	939	ASN	-	EXPRESSION TAG	UNP Q9H2K2
A	940	LEU	-	EXPRESSION TAG	UNP Q9H2K2
A	941	TYR	-	EXPRESSION TAG	UNP Q9H2K2
A	942	PHE	-	EXPRESSION TAG	UNP Q9H2K2
A	943	GLN	-	EXPRESSION TAG	UNP Q9H2K2
A	944	SER	-	EXPRESSION TAG	UNP Q9H2K2
A	945	MET	-	EXPRESSION TAG	UNP Q9H2K2
B	923	MET	-	EXPRESSION TAG	UNP Q9H2K2
B	924	HIS	-	EXPRESSION TAG	UNP Q9H2K2

*Continued on next page...*

*Continued from previous page...*

Chain	Residue	Modelled	Actual	Comment	Reference
B	925	HIS	-	EXPRESSION TAG	UNP Q9H2K2
B	926	HIS	-	EXPRESSION TAG	UNP Q9H2K2
B	927	HIS	-	EXPRESSION TAG	UNP Q9H2K2
B	928	HIS	-	EXPRESSION TAG	UNP Q9H2K2
B	929	HIS	-	EXPRESSION TAG	UNP Q9H2K2
B	930	SER	-	EXPRESSION TAG	UNP Q9H2K2
B	931	SER	-	EXPRESSION TAG	UNP Q9H2K2
B	932	GLY	-	EXPRESSION TAG	UNP Q9H2K2
B	933	VAL	-	EXPRESSION TAG	UNP Q9H2K2
B	934	ASP	-	EXPRESSION TAG	UNP Q9H2K2
B	935	LEU	-	EXPRESSION TAG	UNP Q9H2K2
B	936	GLY	-	EXPRESSION TAG	UNP Q9H2K2
B	937	THR	-	EXPRESSION TAG	UNP Q9H2K2
B	938	GLU	-	EXPRESSION TAG	UNP Q9H2K2
B	939	ASN	-	EXPRESSION TAG	UNP Q9H2K2
B	940	LEU	-	EXPRESSION TAG	UNP Q9H2K2
B	941	TYR	-	EXPRESSION TAG	UNP Q9H2K2
B	942	PHE	-	EXPRESSION TAG	UNP Q9H2K2
B	943	GLN	-	EXPRESSION TAG	UNP Q9H2K2
B	944	SER	-	EXPRESSION TAG	UNP Q9H2K2
B	945	MET	-	EXPRESSION TAG	UNP Q9H2K2

- Molecule 2 is a protein called TANKYRASE-2.

Mol	Chain	Residues	Atoms					ZeroOcc	AltConf	Trace
2	C	47	Total	C	N	O	S	0	1	0
			381	243	68	68	2			
2	D	47	Total	C	N	O	S	0	0	0
			373	238	65	68	2			

- Molecule 3 is ZINC ION (three-letter code: ZN) (formula: Zn).

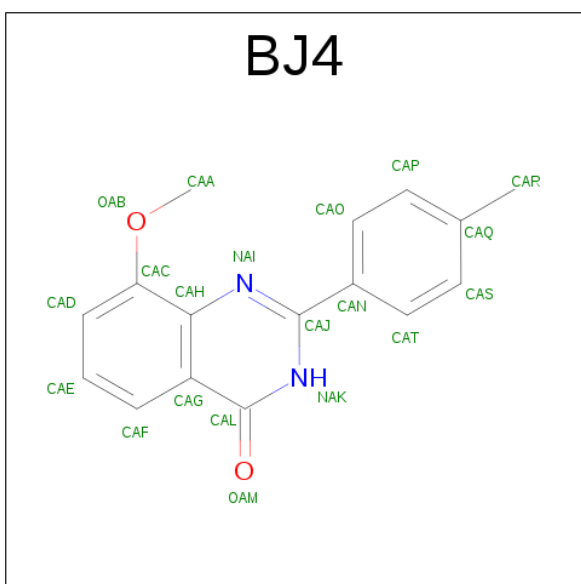
Mol	Chain	Residues	Atoms		ZeroOcc	AltConf
3	B	1	Total	Zn	0	0
			1	1		
3	A	1	Total	Zn	0	0
			1	1		

- Molecule 4 is SULFATE ION (three-letter code: SO4) (formula: O<sub>4</sub>S).



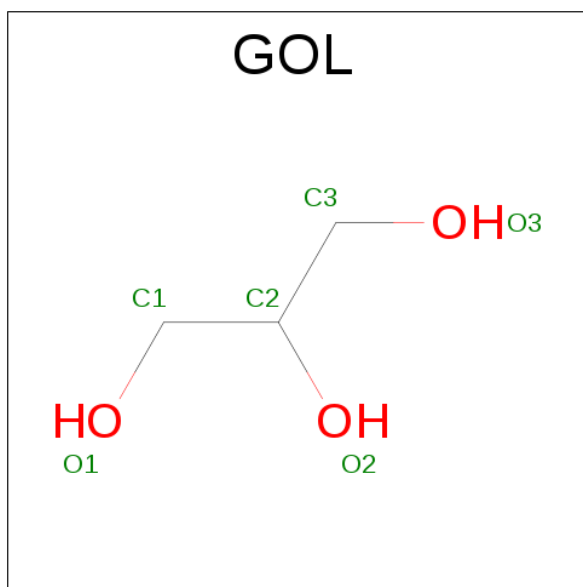
Mol	Chain	Residues	Atoms			ZeroOcc	AltConf
4	A	1	Total	O	S	0	1
			10	8	2		
4	A	1	Total	O	S	0	0
			5	4	1		
4	B	1	Total	O	S	0	0
			5	4	1		
4	D	1	Total	O	S	0	0
			5	4	1		

- Molecule 5 is 8-METHOXY-2-(4-METHYLPHENYL)-3,4-DIHYDROQUINAZOLIN-4-ON E (three-letter code: BJ4) (formula: C<sub>16</sub>H<sub>14</sub>N<sub>2</sub>O<sub>2</sub>).



Mol	Chain	Residues	Atoms				ZeroOcc	AltConf
5	A	1	Total	C	N	O	0	0
			20	16	2	2		
5	B	1	Total	C	N	O	0	0
			20	16	2	2		

- Molecule 6 is GLYCEROL (three-letter code: GOL) (formula:  $C_3H_8O_3$ ).



Mol	Chain	Residues	Atoms			ZeroOcc	AltConf
6	A	1	Total	C	O	0	0
			6	3	3		
6	A	1	Total	C	O	0	0
			6	3	3		
6	C	1	Total	C	O	0	0
			6	3	3		

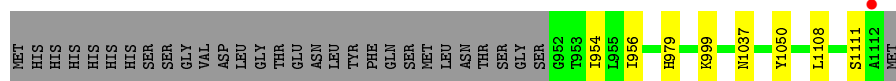
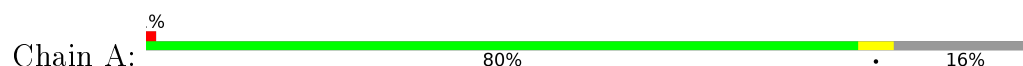
- Molecule 7 is water.

Mol	Chain	Residues	Atoms		ZeroOcc	AltConf
7	A	239	Total	O	0	6
			241	241		
7	B	205	Total	O	0	0
			205	205		
7	C	31	Total	O	0	0
			31	31		
7	D	21	Total	O	0	1
			22	22		
7	B	3	Total	O	0	0
			3	3		

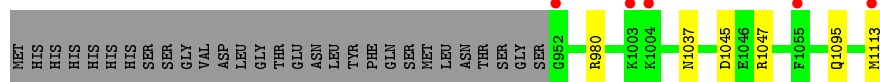
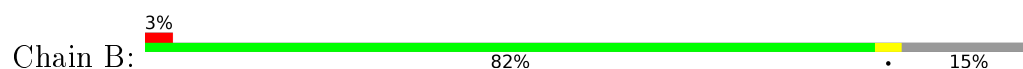
### 3 Residue-property plots [i](#)

These plots are drawn for all protein, RNA and DNA chains in the entry. The first graphic for a chain summarises the proportions of errors displayed in the second graphic. The second graphic shows the sequence view annotated by issues in geometry and electron density. Residues are color-coded according to the number of geometric quality criteria for which they contain at least one outlier: green = 0, yellow = 1, orange = 2 and red = 3 or more. A red dot above a residue indicates a poor fit to the electron density ( $RSRZ > 2$ ). Stretches of 2 or more consecutive residues without any outlier are shown as a green connector. Residues present in the sample, but not in the model, are shown in grey.

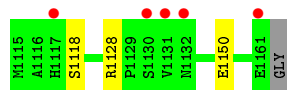
- Molecule 1: TANKYRASE-2



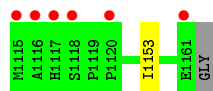
- Molecule 1: TANKYRASE-2



- Molecule 2: TANKYRASE-2



- Molecule 2: TANKYRASE-2





## 4 Data and refinement statistics

Property	Value	Source
Space group	C 2 2 21	Depositor
Cell constants a, b, c, $\alpha$ , $\beta$ , $\gamma$	91.10Å 98.34Å 118.73Å 90.00° 90.00° 90.00°	Depositor
Resolution (Å)	29.85 – 1.65 29.85 – 1.65	Depositor EDS
% Data completeness (in resolution range)	99.9 (29.85-1.65) 99.9 (29.85-1.65)	Depositor EDS
$R_{merge}$	0.07	Depositor
$R_{sym}$	(Not available)	Depositor
$\langle I/\sigma(I) \rangle$ <sup>1</sup>	2.18 (at 1.65Å)	Xtriage
Refinement program	REFMAC 5.7.0029	Depositor
R, $R_{free}$	0.163 , 0.195 0.172 , 0.200	Depositor DCC
$R_{free}$ test set	3211 reflections (5.26%)	DCC
Wilson B-factor (Å <sup>2</sup> )	19.9	Xtriage
Anisotropy	0.599	Xtriage
Bulk solvent $k_{sol}$ (e/Å <sup>3</sup> ), $B_{sol}$ (Å <sup>2</sup> )	0.37 , 47.3	EDS
L-test for twinning <sup>2</sup>	$\langle  L  \rangle = 0.48$ , $\langle L^2 \rangle = 0.31$	Xtriage
Estimated twinning fraction	No twinning to report.	Xtriage
$F_o, F_c$ correlation	0.97	EDS
Total number of atoms	3989	wwPDB-VP
Average B, all atoms (Å <sup>2</sup> )	24.0	wwPDB-VP

Xtriage's analysis on translational NCS is as follows: *The largest off-origin peak in the Patterson function is 3.94% of the height of the origin peak. No significant pseudotranslation is detected.*

<sup>1</sup>Intensities estimated from amplitudes.

<sup>2</sup>Theoretical values of  $\langle |L| \rangle$ ,  $\langle L^2 \rangle$  for acentric reflections are 0.5, 0.375 respectively for untwinned datasets, and 0.333, 0.2 for perfectly twinned datasets.

## 5 Model quality [i](#)

### 5.1 Standard geometry [i](#)

Bond lengths and bond angles in the following residue types are not validated in this section: GOL, ZN, BJ4, SO4

The Z score for a bond length (or angle) is the number of standard deviations the observed value is removed from the expected value. A bond length (or angle) with  $|Z| > 5$  is considered an outlier worth inspection. RMSZ is the root-mean-square of all Z scores of the bond lengths (or angles).

Mol	Chain	Bond lengths		Bond angles	
		RMSZ	$\# Z  > 5$	RMSZ	$\# Z  > 5$
1	A	0.56	0/1377	0.74	0/1846
1	B	0.55	0/1363	0.71	0/1825
2	C	0.63	0/396	0.72	0/540
2	D	0.52	0/385	0.65	0/525
All	All	0.56	0/3521	0.72	0/4736

There are no bond length outliers.

There are no bond angle outliers.

There are no chirality outliers.

There are no planarity outliers.

### 5.2 Too-close contacts [i](#)

In the following table, the Non-H and H(model) columns list the number of non-hydrogen atoms and hydrogen atoms in the chain respectively. The H(added) column lists the number of hydrogen atoms added and optimized by MolProbity. The Clashes column lists the number of clashes within the asymmetric unit, whereas Symm-Clashes lists symmetry related clashes.

Mol	Chain	Non-H	H(model)	H(added)	Clashes	Symm-Clashes
1	A	1325	0	1295	6	1
1	B	1323	0	1275	4	0
2	C	381	0	370	4	0
2	D	373	0	357	1	0
3	A	1	0	0	0	0
3	B	1	0	0	0	0
4	A	15	0	0	1	0
4	B	5	0	0	0	0
4	D	5	0	0	0	0

*Continued on next page...*

*Continued from previous page...*

Mol	Chain	Non-H	H(model)	H(added)	Clashes	Symm-Clashes
5	A	20	0	0	0	0
5	B	20	0	0	0	0
6	A	12	0	16	1	0
6	C	6	0	8	0	0
7	A	241	0	0	3	0
7	B	208	0	0	0	1
7	C	31	0	0	1	0
7	D	22	0	0	0	0
All	All	3989	0	3321	12	1

The all-atom clashscore is defined as the number of clashes found per 1000 atoms (including hydrogen atoms). The all-atom clashscore for this structure is 2.

The worst 5 of 12 close contacts within the same asymmetric unit are listed below, sorted by their clash magnitude.

Atom-1	Atom-2	Interatomic distance (Å)	Clash overlap (Å)
4:A:2114[A]:SO4:O2	7:A:3056:HOH:O	1.64	1.15
1:A:1108[B]:LEU:HD11	2:C:1128[B]:ARG:HE	1.44	0.82
1:A:1111:SER:HB3	7:A:3237:HOH:O	1.96	0.66
2:C:1128[B]:ARG:HG2	7:C:3017:HOH:O	2.04	0.57
1:A:999[B]:LYS:HE2	2:C:1150:GLU:HG2	1.89	0.54

All (1) symmetry-related close contacts are listed below. The label for Atom-2 includes the symmetry operator and encoded unit-cell translations to be applied.

Atom-1	Atom-2	Interatomic distance (Å)	Clash overlap (Å)
1:A:1037[A]:ASN:ND2	7:B:3051:HOH:O[5_555]	2.00	0.20

## 5.3 Torsion angles [i](#)

### 5.3.1 Protein backbone [i](#)

In the following table, the Percentiles column shows the percent Ramachandran outliers of the chain as a percentile score with respect to all X-ray entries followed by that with respect to entries of similar resolution.

The Analysed column shows the number of residues for which the backbone conformation was analysed, and the total number of residues.

Mol	Chain	Analysed	Favoured	Allowed	Outliers	Percentiles	
1	A	166/191 (87%)	165 (99%)	1 (1%)	0	100	100
1	B	163/191 (85%)	163 (100%)	0	0	100	100
2	C	46/48 (96%)	44 (96%)	2 (4%)	0	100	100
2	D	45/48 (94%)	45 (100%)	0	0	100	100
All	All	420/478 (88%)	417 (99%)	3 (1%)	0	100	100

There are no Ramachandran outliers to report.

### 5.3.2 Protein sidechains ⓘ

In the following table, the Percentiles column shows the percent sidechain outliers of the chain as a percentile score with respect to all X-ray entries followed by that with respect to entries of similar resolution.

The Analysed column shows the number of residues for which the sidechain conformation was analysed, and the total number of residues.

Mol	Chain	Analysed	Rotameric	Outliers	Percentiles	
1	A	144/164 (88%)	143 (99%)	1 (1%)	88	78
1	B	141/164 (86%)	141 (100%)	0	100	100
2	C	40/39 (103%)	39 (98%)	1 (2%)	55	26
2	D	39/39 (100%)	39 (100%)	0	100	100
All	All	364/406 (90%)	362 (100%)	2 (0%)	90	86

All (2) residues with a non-rotameric sidechain are listed below:

Mol	Chain	Res	Type
1	A	1050	TYR
2	C	1118	SER

Some sidechains can be flipped to improve hydrogen bonding and reduce clashes. All (3) such sidechains are listed below:

Mol	Chain	Res	Type
1	A	984	HIS
1	A	1041	HIS
1	B	984	HIS

### 5.3.3 RNA ⓘ

There are no RNA molecules in this entry.

## 5.4 Non-standard residues in protein, DNA, RNA chains ⓘ

There are no non-standard protein/DNA/RNA residues in this entry.

## 5.5 Carbohydrates ⓘ

There are no carbohydrates in this entry.

## 5.6 Ligand geometry ⓘ

Of 12 ligands modelled in this entry, 2 are monoatomic - leaving 10 for Mogul analysis.

In the following table, the Counts columns list the number of bonds (or angles) for which Mogul statistics could be retrieved, the number of bonds (or angles) that are observed in the model and the number of bonds (or angles) that are defined in the chemical component dictionary. The Link column lists molecule types, if any, to which the group is linked. The Z score for a bond length (or angle) is the number of standard deviations the observed value is removed from the expected value. A bond length (or angle) with  $|Z| > 2$  is considered an outlier worth inspection. RMSZ is the root-mean-square of all Z scores of the bond lengths (or angles).

Mol	Type	Chain	Res	Link	Bond lengths			Bond angles		
					Counts	RMSZ	# Z  > 2	Counts	RMSZ	# Z  > 2
4	SO4	A	2114[A]	-	4,4,4	0.31	0	6,6,6	0.23	0
4	SO4	A	2114[B]	-	4,4,4	0.33	0	6,6,6	0.60	0
4	SO4	A	2115	-	4,4,4	0.36	0	6,6,6	0.18	0
5	BJ4	A	2116	-	22,22,22	1.46	4 (18%)	27,31,31	3.05	5 (18%)
6	GOL	A	2117	-	5,5,5	0.21	0	5,5,5	0.39	0
6	GOL	A	2118	-	5,5,5	0.53	0	5,5,5	0.58	0
4	SO4	B	2115	-	4,4,4	0.16	0	6,6,6	0.60	0
5	BJ4	B	2116	-	22,22,22	1.38	3 (13%)	27,31,31	3.23	8 (29%)
6	GOL	C	2162	-	5,5,5	0.63	0	5,5,5	0.34	0
4	SO4	D	2162	-	4,4,4	0.44	0	6,6,6	0.44	0

In the following table, the Chirals column lists the number of chiral outliers, the number of chiral centers analysed, the number of these observed in the model and the number defined in the chemical component dictionary. Similar counts are reported in the Torsion and Rings columns. '-' means no outliers of that kind were identified.

Mol	Type	Chain	Res	Link	Chirals	Torsions	Rings
4	SO4	A	2114[A]	-	-	0/0/0/0	0/0/0/0
4	SO4	A	2114[B]	-	-	0/0/0/0	0/0/0/0
4	SO4	A	2115	-	-	0/0/0/0	0/0/0/0
5	BJ4	A	2116	-	-	0/6/6/6	0/3/3/3
6	GOL	A	2117	-	-	0/4/4/4	0/0/0/0
6	GOL	A	2118	-	-	0/4/4/4	0/0/0/0
4	SO4	B	2115	-	-	0/0/0/0	0/0/0/0
5	BJ4	B	2116	-	-	0/6/6/6	0/3/3/3
6	GOL	C	2162	-	-	0/4/4/4	0/0/0/0
4	SO4	D	2162	-	-	0/0/0/0	0/0/0/0

The worst 5 of 7 bond length outliers are listed below:

Mol	Chain	Res	Type	Atoms	Z	Observed(Å)	Ideal(Å)
5	B	2116	BJ4	CAN-CAJ	-2.87	1.40	1.48
5	A	2116	BJ4	CAN-CAJ	-2.53	1.41	1.48
5	B	2116	BJ4	CAR-CAQ	-2.46	1.41	1.51
5	A	2116	BJ4	CAR-CAQ	-2.19	1.42	1.51
5	A	2116	BJ4	CAL-NAK	2.55	1.37	1.33

The worst 5 of 13 bond angle outliers are listed below:

Mol	Chain	Res	Type	Atoms	Z	Observed(°)	Ideal(°)
5	B	2116	BJ4	NAI-CAJ-NAK	-11.06	118.23	126.16
5	A	2116	BJ4	NAI-CAJ-NAK	-10.61	118.56	126.16
5	B	2116	BJ4	CAG-CAH-NAI	-2.68	119.76	123.42
5	A	2116	BJ4	CAA-OAB-CAC	-2.63	113.78	117.79
5	B	2116	BJ4	CAN-CAJ-NAK	2.02	120.80	117.28

There are no chirality outliers.

There are no torsion outliers.

There are no ring outliers.

2 monomers are involved in 2 short contacts:

Mol	Chain	Res	Type	Clashes	Symm-Clashes
4	A	2114[A]	SO4	1	0
6	A	2117	GOL	1	0

## 5.7 Other polymers ⓘ

There are no such residues in this entry.

## 5.8 Polymer linkage issues ⓘ

There are no chain breaks in this entry.

## 6 Fit of model and data [i](#)

### 6.1 Protein, DNA and RNA chains [i](#)

In the following table, the column labelled ‘#RSRZ> 2’ contains the number (and percentage) of RSRZ outliers, followed by percent RSRZ outliers for the chain as percentile scores relative to all X-ray entries and entries of similar resolution. The OWAB column contains the minimum, median, 95<sup>th</sup> percentile and maximum values of the occupancy-weighted average B-factor per residue. The column labelled ‘Q< 0.9’ lists the number of (and percentage) of residues with an average occupancy less than 0.9.

Mol	Chain	Analysed	<RSRZ>	#RSRZ>2	OWAB(Å <sup>2</sup> )	Q<0.9
1	A	161/191 (84%)	-0.09	1 (0%) 90 90	13, 20, 31, 51	0
1	B	162/191 (84%)	-0.01	5 (3%) 52 53	13, 21, 35, 56	0
2	C	47/48 (97%)	0.45	5 (10%) 8 6	14, 18, 39, 54	0
2	D	47/48 (97%)	0.48	6 (12%) 5 4	14, 22, 47, 59	0
All	All	417/478 (87%)	0.07	17 (4%) 41 40	13, 20, 38, 59	0

The worst 5 of 17 RSRZ outliers are listed below:

Mol	Chain	Res	Type	RSRZ
1	A	1112	ALA	4.6
2	D	1117	HIS	4.5
2	C	1161	GLU	3.8
2	C	1130	SER	3.5
2	D	1120	PRO	3.3

### 6.2 Non-standard residues in protein, DNA, RNA chains [i](#)

There are no non-standard protein/DNA/RNA residues in this entry.

### 6.3 Carbohydrates [i](#)

There are no carbohydrates in this entry.

### 6.4 Ligands [i](#)

In the following table, the Atoms column lists the number of modelled atoms in the group and the number defined in the chemical component dictionary. LLDF column lists the quality of electron density of the group with respect to its neighbouring residues in protein, DNA or RNA chains. The B-factors column lists the minimum, median, 95<sup>th</sup> percentile and maximum values of B factors



of atoms in the group. The column labelled 'Q< 0.9' lists the number of atoms with occupancy less than 0.9.

Mol	Type	Chain	Res	Atoms	RSCC	RSR	LLDF	B-factors( $\text{\AA}^2$ )	Q<0.9
6	GOL	A	2117	6/6	0.80	0.21	6.23	31,38,39,44	0
6	GOL	A	2118	6/6	0.81	0.17	4.42	21,37,39,40	0
4	SO4	D	2162	5/5	0.97	0.17	0.54	43,45,47,48	0
4	SO4	A	2115	5/5	0.95	0.19	0.31	49,49,55,57	0
6	GOL	C	2162	6/6	0.83	0.18	-0.19	19,21,22,24	6
5	BJ4	A	2116	20/20	0.96	0.08	-0.28	13,14,17,20	0
5	BJ4	B	2116	20/20	0.95	0.08	-0.48	14,16,20,21	0
4	SO4	A	2114[B]	5/5	0.99	0.07	-0.65	15,17,17,18	5
4	SO4	A	2114[A]	5/5	0.99	0.07	-0.65	24,25,26,26	5
3	ZN	B	2114	1/1	0.98	0.05	-1.25	18,18,18,18	0
4	SO4	B	2115	5/5	0.99	0.07	-1.26	21,24,27,30	0
3	ZN	A	2113	1/1	0.98	0.04	-2.68	22,22,22,22	0

## 6.5 Other polymers [i](#)

There are no such residues in this entry.