



# Full wwPDB X-ray Structure Validation Report ⓘ

Feb 1, 2016 – 09:02 PM GMT

PDB ID : 4UPP  
Title : Structure of rat neuronal nitric oxide synthase heme domain in complex with N'-[4-[[[(2S,4R)-4-[3-[(C-thiophen-2-ylcarbonimidoyl)amino]phenoxy]pyrrolidin-2-yl]methoxy]phenyl]thiophene-2-carboximidamide  
Authors : Li, H.; Poulos, T.L.  
Deposited on : 2014-06-17  
Resolution : 1.91 Å(reported)

This is a Full wwPDB X-ray Structure Validation Report for a publicly released PDB entry.  
We welcome your comments at [validation@mail.wwpdb.org](mailto:validation@mail.wwpdb.org)  
A user guide is available at  
<http://wwpdb.org/validation/2016/XrayValidationReportHelp>  
with specific help available everywhere you see the ⓘ symbol.

---

The following versions of software and data (see [references ⓘ](#)) were used in the production of this report:

MolProbity : 4.02b-467  
Mogul : 1.7 (RC4), CSD as536be (2015)  
Xtriage (Phenix) : 1.9-1692  
EDS : rb-20026688  
Percentile statistics : 20151230.v01 (using entries in the PDB archive December 30th 2015)  
Refmac : 5.8.0135  
CCP4 : 6.5.0  
Ideal geometry (proteins) : Engh & Huber (2001)  
Ideal geometry (DNA, RNA) : Parkinson et al. (1996)  
Validation Pipeline (wwPDB-VP) : trunk26865

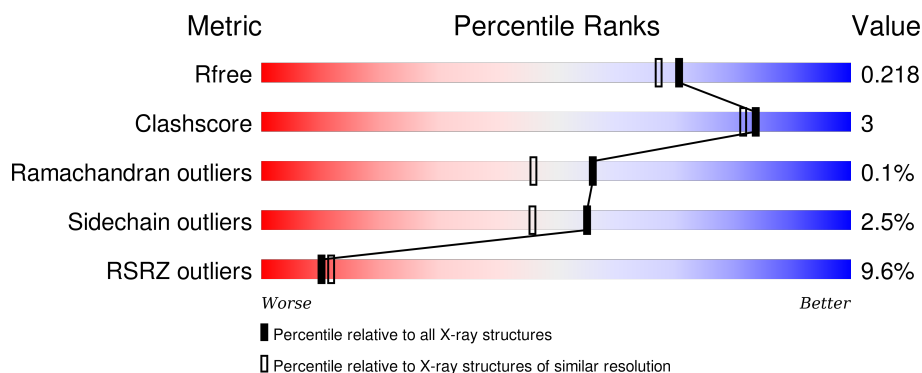
# 1 Overall quality at a glance

The following experimental techniques were used to determine the structure:

## *X-RAY DIFFRACTION*

The reported resolution of this entry is 1.91 Å.

Percentile scores (ranging between 0-100) for global validation metrics of the entry are shown in the following graphic. The table shows the number of entries on which the scores are based.



Metric	Whole archive (#Entries)	Similar resolution (#Entries, resolution range(Å))
$R_{free}$	91344	5832 (1.94-1.90)
Clashscore	102246	6540 (1.94-1.90)
Ramachandran outliers	100387	6464 (1.94-1.90)
Sidechain outliers	100360	6465 (1.94-1.90)
RSRZ outliers	91569	5846 (1.94-1.90)

The table below summarises the geometric issues observed across the polymeric chains and their fit to the electron density. The red, orange, yellow and green segments on the lower bar indicate the fraction of residues that contain outliers for  $\geq 3$ , 2, 1 and 0 types of geometric quality criteria. A grey segment represents the fraction of residues that are not modelled. The numeric value for each fraction is indicated below the corresponding segment, with a dot representing fractions  $\leq 5\%$ . The upper red bar (where present) indicates the fraction of residues that have poor fit to the electron density. The numeric value is given above the bar.

Mol	Chain	Length	Quality of chain
1	A	422	<div> <div>13%</div> <div>87%</div> <div>9% . .</div> </div>
1	B	422	<div> <div>5%</div> <div>91%</div> <div>6% . .</div> </div>

The following table lists non-polymeric compounds, carbohydrate monomers and non-standard residues in protein, DNA, RNA chains that are outliers for geometric or electron-density-fit criteria:

Mol	Type	Chain	Res	Chirality	Geometry	Clashes	Electron density
5	ACT	A	860	-	-	-	X
5	ACT	B	860	-	-	-	X

## 2 Entry composition [i](#)

There are 7 unique types of molecules in this entry. The entry contains 7191 atoms, of which 0 are hydrogens and 0 are deuteriums.

In the tables below, the ZeroOcc column contains the number of atoms modelled with zero occupancy, the AltConf column contains the number of residues with at least one atom in alternate conformation and the Trace column contains the number of residues modelled with at most 2 atoms.

- Molecule 1 is a protein called NITRIC OXIDE SYNTHASE, BRAIN.

Mol	Chain	Residues	Atoms					ZeroOcc	AltConf	Trace
1	A	408	Total	C	N	O	S	0	3	1
			3325	2128	568	607	22			
1	B	411	Total	C	N	O	S	0	0	0
			3345	2140	574	610	21			

- Molecule 2 is PROTOPORPHYRIN IX CONTAINING FE (three-letter code: HEM) (formula:  $C_{34}H_{32}FeN_4O_4$ ).



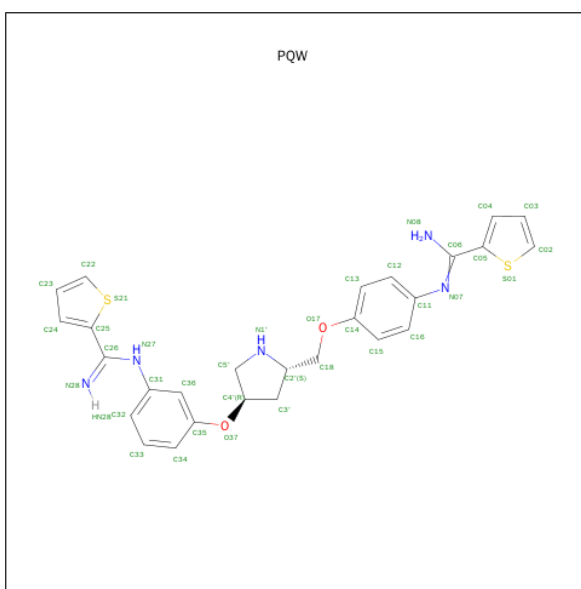
Mol	Chain	Residues	Atoms					ZeroOcc	AltConf
2	A	1	Total	C	Fe	N	O	0	0
			43	34	1	4	4		
2	B	1	Total	C	Fe	N	O	0	0
			43	34	1	4	4		

- Molecule 3 is 5,6,7,8-TETRAHYDROBIOPTERIN (three-letter code: H4B) (formula:  $C_9H_{15}N_5O_3$ ).



Mol	Chain	Residues	Atoms				ZeroOcc	AltConf
3	A	1	Total 17	C 9	N 5	O 3	0	0
3	B	1	Total 17	C 9	N 5	O 3	0	0

- Molecule 4 is N'-[4-[[[(2S,4R)-4-[3-[(C-THIOPHEN-2-YLCARBONIMIDOYL)AMINO]PHE  
NOXY]PYRROLIDIN-2-YL]METHOXY]PHENYL]THIOPHENE-2-CARBOXIMIDAMID  
E (three-letter code: PQW) (formula: C<sub>27</sub>H<sub>27</sub>N<sub>5</sub>O<sub>2</sub>S<sub>2</sub>).



Mol	Chain	Residues	Atoms					ZeroOcc	AltConf
4	A	1	Total	C	N	O	S	0	0
			36	27	5	2	2		

*Continued on next page...*

*Continued from previous page...*

Mol	Chain	Residues	Atoms					ZeroOcc	AltConf
4	B	1	Total	C	N	O	S	0	0
			36	27	5	2	2		

- Molecule 5 is ACETATE ION (three-letter code: ACT) (formula:  $C_2H_3O_2$ ).



Mol	Chain	Residues	Atoms			ZeroOcc	AltConf
5	A	1	Total	C	O	0	0
			4	2	2		
5	B	1	Total	C	O	0	0
			4	2	2		

- Molecule 6 is ZINC ION (three-letter code: ZN) (formula:  $Zn$ ).

Mol	Chain	Residues	Atoms		ZeroOcc	AltConf
6	A	1	Total	Zn	0	0
			1	1		

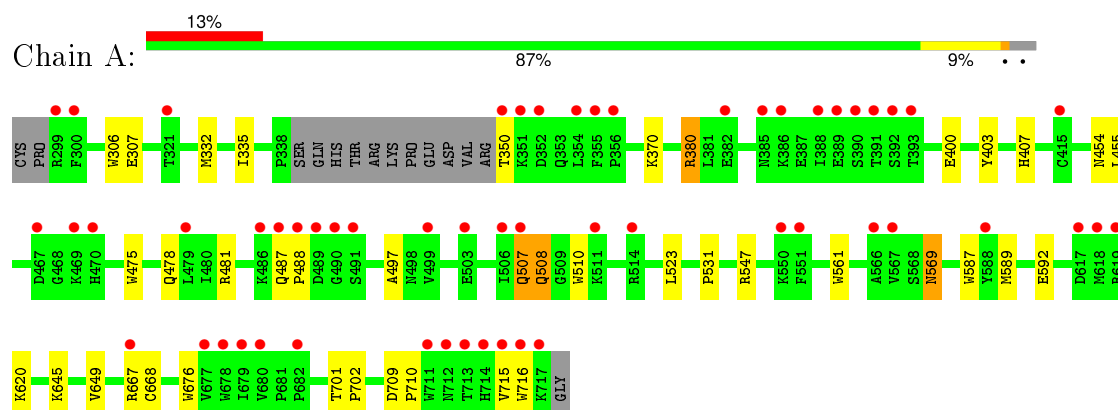
- Molecule 7 is water.

Mol	Chain	Residues	Atoms		ZeroOcc	AltConf
7	A	137	Total	O	0	0
			137	137		
7	B	183	Total	O	0	0
			183	183		

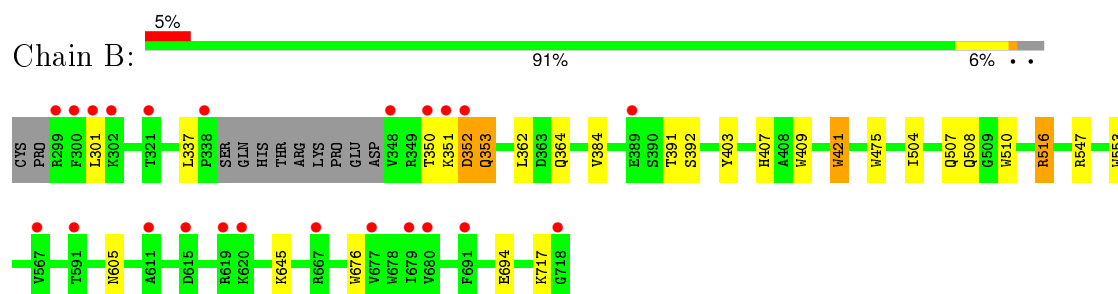
### 3 Residue-property plots [i](#)

These plots are drawn for all protein, RNA and DNA chains in the entry. The first graphic for a chain summarises the proportions of errors displayed in the second graphic. The second graphic shows the sequence view annotated by issues in geometry and electron density. Residues are color-coded according to the number of geometric quality criteria for which they contain at least one outlier: green = 0, yellow = 1, orange = 2 and red = 3 or more. A red dot above a residue indicates a poor fit to the electron density ( $RSRZ > 2$ ). Stretches of 2 or more consecutive residues without any outlier are shown as a green connector. Residues present in the sample, but not in the model, are shown in grey.

#### • Molecule 1: NITRIC OXIDE SYNTHASE, BRAIN



#### • Molecule 1: NITRIC OXIDE SYNTHASE, BRAIN



## 4 Data and refinement statistics

Property	Value	Source
Space group	P 21 21 21	Depositor
Cell constants a, b, c, $\alpha$ , $\beta$ , $\gamma$	52.06Å 110.95Å 165.11Å 90.00° 90.00° 90.00°	Depositor
Resolution (Å)	92.19 – 1.91 38.69 – 1.91	Depositor EDS
% Data completeness (in resolution range)	99.0 (92.19-1.91) 99.0 (38.69-1.91)	Depositor EDS
$R_{merge}$	0.05	Depositor
$R_{sym}$	(Not available)	Depositor
$\langle I/\sigma(I) \rangle$ <sup>1</sup>	2.36 (at 1.91Å)	Xtriage
Refinement program	REFMAC 5.6.0117	Depositor
R, $R_{free}$	0.187 , 0.218 0.186 , 0.218	Depositor DCC
$R_{free}$ test set	3696 reflections (5.23%)	DCC
Wilson B-factor (Å <sup>2</sup> )	29.7	Xtriage
Anisotropy	0.730	Xtriage
Bulk solvent $k_{sol}$ (e/Å <sup>3</sup> ), $B_{sol}$ (Å <sup>2</sup> )	0.36 , 41.8	EDS
Estimated twinning fraction	No twinning to report.	Xtriage
L-test for twinning <sup>2</sup>	$\langle  L  \rangle = 0.49$ , $\langle L^2 \rangle = 0.32$	Xtriage
Outliers	1 of 74405 reflections (0.001%)	Xtriage
$F_o, F_c$ correlation	0.96	EDS
Total number of atoms	7191	wwPDB-VP
Average B, all atoms (Å <sup>2</sup> )	45.0	wwPDB-VP

Xtriage's analysis on translational NCS is as follows: *The largest off-origin peak in the Patterson function is 5.09% of the height of the origin peak. No significant pseudotranslation is detected.*

<sup>1</sup>Intensities estimated from amplitudes.

<sup>2</sup>Theoretical values of  $\langle |L| \rangle$ ,  $\langle L^2 \rangle$  for acentric reflections are 0.5, 0.375 respectively for untwinned datasets, and 0.333, 0.2 for perfectly twinned datasets.



## 5 Model quality ⓘ

### 5.1 Standard geometry ⓘ

Bond lengths and bond angles in the following residue types are not validated in this section: HEM, ZN, PQW, H4B, ACT

The Z score for a bond length (or angle) is the number of standard deviations the observed value is removed from the expected value. A bond length (or angle) with  $|Z| > 5$  is considered an outlier worth inspection. RMSZ is the root-mean-square of all Z scores of the bond lengths (or angles).

Mol	Chain	Bond lengths		Bond angles	
		RMSZ	$\# Z  > 5$	RMSZ	$\# Z  > 5$
1	A	0.64	6/3427 (0.2%)	0.63	0/4650
1	B	0.68	5/3438 (0.1%)	0.66	0/4661
All	All	0.66	11/6865 (0.2%)	0.64	0/9311

All (11) bond length outliers are listed below:

Mol	Chain	Res	Type	Atoms	Z	Observed(Å)	Ideal(Å)
1	B	510	TRP	CD2-CE2	5.38	1.47	1.41
1	A	716	TRP	CD2-CE2	5.30	1.47	1.41
1	A	306	TRP	CD2-CE2	5.25	1.47	1.41
1	A	561	TRP	CD2-CE2	5.22	1.47	1.41
1	A	510	TRP	CD2-CE2	5.20	1.47	1.41
1	B	553	TRP	CD2-CE2	5.11	1.47	1.41
1	B	475	TRP	CD2-CE2	5.10	1.47	1.41
1	B	421	TRP	CD2-CE2	5.08	1.47	1.41
1	A	475	TRP	CD2-CE2	5.06	1.47	1.41
1	A	676	TRP	CD2-CE2	5.06	1.47	1.41
1	B	676	TRP	CD2-CE2	5.06	1.47	1.41

There are no bond angle outliers.

There are no chirality outliers.

There are no planarity outliers.

### 5.2 Too-close contacts ⓘ

In the following table, the Non-H and H(model) columns list the number of non-hydrogen atoms and hydrogen atoms in the chain respectively. The H(added) column lists the number of hydrogen atoms added and optimized by MolProbity. The Clashes column lists the number of clashes within the asymmetric unit, whereas Symm-Clashes lists symmetry related clashes.

Mol	Chain	Non-H	H(model)	H(added)	Clashes	Symm-Clashes
1	A	3325	0	3237	21	0
1	B	3345	0	3259	15	0
2	A	43	0	30	3	0
2	B	43	0	30	5	0
3	A	17	0	15	0	0
3	B	17	0	15	0	0
4	A	36	0	26	2	0
4	B	36	0	26	2	0
5	A	4	0	3	0	0
5	B	4	0	3	0	0
6	A	1	0	0	0	0
7	A	137	0	0	0	0
7	B	183	0	0	5	0
All	All	7191	0	6644	41	0

The all-atom clashscore is defined as the number of clashes found per 1000 atoms (including hydrogen atoms). The all-atom clashscore for this structure is 3.

All (41) close contacts within the same asymmetric unit are listed below, sorted by their clash magnitude.

Atom-1	Atom-2	Interatomic distance (Å)	Clash overlap (Å)
2:A:750:HEM:HMC2	2:A:750:HEM:HBC2	1.57	0.86
2:B:750:HEM:O1D	4:B:800:PQW:H5'	1.80	0.81
1:A:307:GLU:HG3	7:B:2156:HOH:O	1.90	0.71
1:B:353:GLN:H	1:B:353:GLN:HE21	1.38	0.70
2:B:750:HEM:HBB2	2:B:750:HEM:HHC	1.74	0.69
1:A:508:GLN:CA	1:A:508:GLN:HE21	2.08	0.67
1:A:508:GLN:HA	1:A:508:GLN:HE21	1.61	0.66
1:B:351:LYS:HE3	1:B:392:SER:OG	1.98	0.63
1:A:508:GLN:HA	1:A:508:GLN:NE2	2.16	0.59
1:A:523:LEU:HD22	1:A:531:PRO:HB2	1.84	0.59
1:A:667:ARG:NH1	1:A:668[B]:CYS:SG	2.79	0.55
1:B:403:TYR:CE1	1:B:407:HIS:CE1	2.97	0.53
2:B:750:HEM:CBB	2:B:750:HEM:HHC	2.38	0.53
1:A:380:ARG:HD3	1:A:400:GLU:OE2	2.10	0.50
1:A:455:LEU:HD12	1:A:587:TRP:HB3	1.94	0.50
1:B:391:THR:O	1:B:392:SER:HB2	2.11	0.50
1:B:364:GLN:NE2	7:B:2016:HOH:O	2.46	0.47
1:B:409:TRP:CE3	1:B:421:TRP:HA	2.50	0.47
2:A:750:HEM:HBC2	2:A:750:HEM:CMC	2.33	0.47
1:B:352:ASP:HB3	1:B:353:GLN:HE21	1.79	0.47
2:B:750:HEM:HBB2	2:B:750:HEM:CHC	2.44	0.47

*Continued on next page...*

Continued from previous page...

Atom-1	Atom-2	Interatomic distance (Å)	Clash overlap (Å)
1:B:504:ILE:O	1:B:508:GLN:HG2	2.15	0.47
1:B:605:ASN:ND2	7:B:2155:HOH:O	2.42	0.45
1:A:487:GLN:HB3	1:A:488:PRO:HD2	1.97	0.45
1:B:362:LEU:HD11	1:B:384:VAL:HG21	1.98	0.45
1:A:478:GLN:HB2	1:A:481:ARG:HG3	1.98	0.45
2:A:750:HEM:HHC	2:A:750:HEM:HBB2	1.99	0.45
1:A:497:ALA:HA	4:A:800:PQW:H23	1.99	0.44
1:A:332:MET:CE	1:B:301:LEU:HD22	2.48	0.44
1:B:516:ARG:HD2	7:B:2116:HOH:O	2.18	0.43
1:B:717:LYS:NZ	7:B:2130:HOH:O	2.50	0.43
1:A:332:MET:HE3	1:B:301:LEU:HD22	2.00	0.43
1:A:335:ILE:HD13	1:B:694:GLU:HB3	2.01	0.42
2:B:750:HEM:C4B	4:B:800:PQW:S01	3.12	0.42
1:A:592:GLU:OE1	4:A:800:PQW:N07	2.53	0.41
1:A:507:GLN:HG2	1:A:507:GLN:O	2.20	0.41
1:A:569:ASN:HD22	1:A:569:ASN:H	1.68	0.41
1:A:701:THR:HA	1:A:702:PRO:C	2.42	0.40
1:A:403:TYR:CE2	1:A:407:HIS:CE1	3.10	0.40
1:A:589:MET:HA	1:A:649:VAL:O	2.21	0.40
1:A:709:ASP:HA	1:A:710:PRO:HD3	1.87	0.40

There are no symmetry-related clashes.

## 5.3 Torsion angles [i](#)

### 5.3.1 Protein backbone [i](#)

In the following table, the Percentiles column shows the percent Ramachandran outliers of the chain as a percentile score with respect to all X-ray entries followed by that with respect to entries of similar resolution.

The Analysed column shows the number of residues for which the backbone conformation was analysed, and the total number of residues.

Mol	Chain	Analysed	Favoured	Allowed	Outliers	Percentiles	
1	A	407/422 (96%)	398 (98%)	9 (2%)	0	100	100
1	B	407/422 (96%)	401 (98%)	5 (1%)	1 (0%)	52	42
All	All	814/844 (96%)	799 (98%)	14 (2%)	1 (0%)	56	46

All (1) Ramachandran outliers are listed below:

Mol	Chain	Res	Type
1	B	352	ASP

### 5.3.2 Protein sidechains ⓘ

In the following table, the Percentiles column shows the percent sidechain outliers of the chain as a percentile score with respect to all X-ray entries followed by that with respect to entries of similar resolution.

The Analysed column shows the number of residues for which the sidechain conformation was analysed, and the total number of residues.

Mol	Chain	Analysed	Rotameric	Outliers	Percentiles	
1	A	366/377 (97%)	355 (97%)	11 (3%)	48	37
1	B	366/377 (97%)	359 (98%)	7 (2%)	65	58
All	All	732/754 (97%)	714 (98%)	18 (2%)	55	46

All (18) residues with a non-rotameric sidechain are listed below:

Mol	Chain	Res	Type
1	A	350	THR
1	A	370	LYS
1	A	380	ARG
1	A	454	ASN
1	A	507	GLN
1	A	508	GLN
1	A	547	ARG
1	A	569	ASN
1	A	620	LYS
1	A	645	LYS
1	A	715	VAL
1	B	337	LEU
1	B	350	THR
1	B	353	GLN
1	B	507	GLN
1	B	516	ARG
1	B	547	ARG
1	B	645	LYS

Some sidechains can be flipped to improve hydrogen bonding and reduce clashes. All (14) such sidechains are listed below:

Mol	Chain	Res	Type
1	A	353	GLN
1	A	454	ASN
1	A	508	GLN
1	A	569	ASN
1	A	605	ASN
1	A	697	ASN
1	B	353	GLN
1	B	364	GLN
1	B	454	ASN
1	B	529	ASN
1	B	535	GLN
1	B	601	ASN
1	B	605	ASN
1	B	697	ASN

### 5.3.3 RNA [i](#)

There are no RNA molecules in this entry.

## 5.4 Non-standard residues in protein, DNA, RNA chains [i](#)

There are no non-standard protein/DNA/RNA residues in this entry.

## 5.5 Carbohydrates [i](#)

There are no carbohydrates in this entry.

## 5.6 Ligand geometry [i](#)

Of 9 ligands modelled in this entry, 1 is monoatomic - leaving 8 for Mogul analysis.

In the following table, the Counts columns list the number of bonds (or angles) for which Mogul statistics could be retrieved, the number of bonds (or angles) that are observed in the model and the number of bonds (or angles) that are defined in the chemical component dictionary. The Link column lists molecule types, if any, to which the group is linked. The Z score for a bond length (or angle) is the number of standard deviations the observed value is removed from the expected value. A bond length (or angle) with  $|Z| > 2$  is considered an outlier worth inspection. RMSZ is the root-mean-square of all Z scores of the bond lengths (or angles).

Mol	Type	Chain	Res	Link	Bond lengths			Bond angles		
					Counts	RMSZ	$\# Z  > 2$	Counts	RMSZ	$\# Z  > 2$
2	HEM	A	750	1	30,50,50	2.84	13 (43%)	24,82,82	2.83	10 (41%)

Mol	Type	Chain	Res	Link	Bond lengths			Bond angles		
					Counts	RMSZ	# Z  > 2	Counts	RMSZ	# Z  > 2
3	H4B	A	760	-	13,18,18	0.95	0	11,26,26	2.46	4 (36%)
4	PQW	A	800	-	39,40,40	1.40	7 (17%)	35,54,54	1.91	8 (22%)
5	ACT	A	860	-	1,3,3	1.57	0	0,3,3	0.00	-
2	HEM	B	750	1	30,50,50	2.77	14 (46%)	24,82,82	2.73	9 (37%)
3	H4B	B	760	-	13,18,18	0.98	0	11,26,26	2.57	4 (36%)
4	PQW	B	800	-	39,40,40	1.36	7 (17%)	35,54,54	1.90	6 (17%)
5	ACT	B	860	-	1,3,3	1.27	0	0,3,3	0.00	-

In the following table, the Chirals column lists the number of chiral outliers, the number of chiral centers analysed, the number of these observed in the model and the number defined in the chemical component dictionary. Similar counts are reported in the Torsion and Rings columns. '-' means no outliers of that kind were identified.

Mol	Type	Chain	Res	Link	Chirals	Torsions	Rings
2	HEM	A	750	1	-	0/10/54/54	0/0/8/8
3	H4B	A	760	-	-	0/8/17/17	0/2/2/2
4	PQW	A	800	-	-	1/17/34/34	0/5/5/5
5	ACT	A	860	-	-	0/0/0/0	0/0/0/0
2	HEM	B	750	1	-	0/10/54/54	0/0/8/8
3	H4B	B	760	-	-	0/8/17/17	0/2/2/2
4	PQW	B	800	-	-	1/17/34/34	0/5/5/5
5	ACT	B	860	-	-	0/0/0/0	0/0/0/0

All (41) bond length outliers are listed below:

Mol	Chain	Res	Type	Atoms	Z	Observed(Å)	Ideal(Å)
2	A	750	HEM	C3B-C4B	-4.82	1.47	1.51
2	B	750	HEM	C3B-C4B	-4.30	1.48	1.51
2	A	750	HEM	C3D-C4D	-3.88	1.46	1.51
4	A	800	PQW	C11-N07	-3.50	1.36	1.42
4	A	800	PQW	C06-N08	-3.36	1.27	1.34
4	B	800	PQW	C06-N08	-3.02	1.28	1.34
4	B	800	PQW	C11-N07	-2.95	1.37	1.42
2	B	750	HEM	C3D-C4D	-2.87	1.47	1.51
2	B	750	HEM	C2D-C3D	-2.86	1.46	1.54
4	B	800	PQW	C31-N27	-2.70	1.36	1.41
4	A	800	PQW	C31-N27	-2.62	1.36	1.41
2	A	750	HEM	C2D-C3D	-2.53	1.47	1.54
4	A	800	PQW	C26-N27	-2.14	1.34	1.39
4	B	800	PQW	C26-N27	-2.05	1.35	1.39
4	B	800	PQW	C05-S01	2.08	1.74	1.72

*Continued on next page...*

*Continued from previous page...*

Mol	Chain	Res	Type	Atoms	Z	Observed(Å)	Ideal(Å)
2	B	750	HEM	CHD-C1D	2.08	1.44	1.38
2	B	750	HEM	C4A-CHB	2.14	1.45	1.39
2	B	750	HEM	C1A-CHA	2.17	1.45	1.39
4	A	800	PQW	C06-N07	2.27	1.33	1.30
2	B	750	HEM	FE-ND	2.28	2.09	1.97
2	A	750	HEM	C4A-CHB	2.43	1.46	1.39
2	A	750	HEM	FE-ND	2.43	2.10	1.97
2	B	750	HEM	FE-NB	2.47	2.10	1.97
2	A	750	HEM	CHC-C4B	2.68	1.46	1.38
2	A	750	HEM	FE-NB	2.69	2.11	1.97
4	A	800	PQW	C05-C06	2.77	1.49	1.45
2	B	750	HEM	CHC-C4B	2.78	1.46	1.38
2	A	750	HEM	CHD-C1D	2.91	1.47	1.38
4	B	800	PQW	C05-C06	3.04	1.49	1.45
2	A	750	HEM	C2A-C3A	3.18	1.47	1.37
4	B	800	PQW	C25-C26	3.48	1.50	1.45
2	B	750	HEM	C2A-C3A	3.64	1.48	1.37
2	B	750	HEM	CHC-C1C	3.69	1.45	1.36
4	A	800	PQW	C25-C26	3.85	1.50	1.45
2	A	750	HEM	CHC-C1C	3.91	1.45	1.36
2	B	750	HEM	CHD-C4C	4.21	1.46	1.36
2	A	750	HEM	CHD-C4C	4.42	1.46	1.36
2	A	750	HEM	C4C-NC	6.67	1.44	1.36
2	B	750	HEM	C1C-NC	7.19	1.44	1.36
2	B	750	HEM	C4C-NC	7.27	1.45	1.36
2	A	750	HEM	C1C-NC	7.39	1.45	1.36

All (41) bond angle outliers are listed below:

Mol	Chain	Res	Type	Atoms	Z	Observed(°)	Ideal(°)
4	A	800	PQW	C03-C02-S01	-6.05	106.53	113.23
4	B	800	PQW	C23-C22-S21	-5.90	106.70	113.23
2	A	750	HEM	CBA-CAA-C2A	-5.87	102.00	112.53
4	B	800	PQW	C03-C02-S01	-5.76	106.86	113.23
4	A	800	PQW	C23-C22-S21	-5.38	107.27	113.23
2	B	750	HEM	CBA-CAA-C2A	-4.87	103.79	112.53
2	A	750	HEM	C3C-CAC-CBC	-3.86	118.54	124.46
3	B	760	H4B	N3-C2-N1	-3.37	120.00	125.53
3	A	760	H4B	N3-C2-N1	-2.90	120.77	125.53
2	B	750	HEM	C3B-CAB-CBB	-2.89	120.02	124.46
4	B	800	PQW	C31-N27-C26	-2.87	121.27	128.32
4	A	800	PQW	C31-N27-C26	-2.82	121.39	128.32

*Continued on next page...*

*Continued from previous page...*

Mol	Chain	Res	Type	Atoms	Z	Observed(°)	Ideal(°)
2	B	750	HEM	C3C-CAC-CBC	-2.63	120.42	124.46
2	A	750	HEM	C3B-C4B-CHC	-2.50	119.65	123.16
4	A	800	PQW	C18-O17-C14	2.08	122.37	117.89
3	A	760	H4B	C2-N1-C8A	2.22	119.52	114.54
4	A	800	PQW	C05-C06-N08	2.23	123.26	117.92
2	A	750	HEM	C3B-C4B-NB	2.32	116.07	111.63
2	B	750	HEM	C2C-C1C-NC	2.33	114.14	110.21
2	A	750	HEM	C2C-C1C-NC	2.34	114.16	110.21
4	A	800	PQW	C25-C26-N27	2.39	121.88	115.07
4	B	800	PQW	C05-C06-N08	2.47	123.82	117.92
4	B	800	PQW	C25-C26-N27	2.49	122.18	115.07
3	B	760	H4B	C2-N1-C8A	3.01	121.30	114.54
4	A	800	PQW	C35-O37-C4'	3.06	123.97	119.06
4	A	800	PQW	C3'-C4'-C5'	3.28	106.65	103.59
2	A	750	HEM	CMD-C2D-C3D	3.62	130.38	114.35
2	B	750	HEM	CMD-C2D-C3D	3.64	130.44	114.35
4	B	800	PQW	C3'-C4'-C5'	3.65	106.99	103.59
3	A	760	H4B	C4-N3-C2	4.02	121.52	115.94
3	B	760	H4B	C4-N3-C2	4.11	121.64	115.94
2	B	750	HEM	CAD-C3D-C4D	4.16	127.16	112.47
2	A	750	HEM	CAD-C3D-C4D	4.27	127.54	112.47
2	A	750	HEM	CMB-C2B-C3B	4.56	127.91	116.53
2	B	750	HEM	CMC-C2C-C3C	4.96	128.90	116.53
3	B	760	H4B	C4-C4A-C8A	4.98	119.07	114.56
2	A	750	HEM	CMC-C2C-C3C	5.16	129.41	116.53
2	B	750	HEM	CMB-C2B-C3B	5.36	129.92	116.53
3	A	760	H4B	C4-C4A-C8A	5.41	119.46	114.56
2	B	750	HEM	CAD-C3D-C2D	5.71	129.65	113.22
2	A	750	HEM	CAD-C3D-C2D	5.82	129.95	113.22

There are no chirality outliers.

All (2) torsion outliers are listed below:

Mol	Chain	Res	Type	Atoms
4	B	800	PQW	N08-C06-N07-C11
4	A	800	PQW	N08-C06-N07-C11

There are no ring outliers.

4 monomers are involved in 10 short contacts:



Mol	Chain	Res	Type	Clashes	Symm-Clashes
2	A	750	HEM	3	0
4	A	800	PQW	2	0
2	B	750	HEM	5	0
4	B	800	PQW	2	0

## 5.7 Other polymers [i](#)

There are no such residues in this entry.

## 5.8 Polymer linkage issues [i](#)

There are no chain breaks in this entry.

## 6 Fit of model and data

### 6.1 Protein, DNA and RNA chains

In the following table, the column labelled ‘#RSRZ> 2’ contains the number (and percentage) of RSRZ outliers, followed by percent RSRZ outliers for the chain as percentile scores relative to all X-ray entries and entries of similar resolution. The OWAB column contains the minimum, median, 95<sup>th</sup> percentile and maximum values of the occupancy-weighted average B-factor per residue. The column labelled ‘Q< 0.9’ lists the number of (and percentage) of residues with an average occupancy less than 0.9.

Mol	Chain	Analysed	<RSRZ>	#RSRZ>2	OWAB(Å <sup>2</sup> )	Q<0.9
1	A	408/422 (96%)	0.71	56 (13%) 4 4	23, 48, 87, 118	0
1	B	411/422 (97%)	0.17	23 (5%) 28 31	22, 37, 61, 87	0
All	All	819/844 (97%)	0.44	79 (9%) 10 12	22, 41, 81, 118	0

All (79) RSRZ outliers are listed below:

Mol	Chain	Res	Type	RSRZ
1	B	300	PHE	9.3
1	A	717	LYS	8.4
1	B	348	VAL	7.7
1	A	716	TRP	6.7
1	A	355	PHE	5.4
1	B	350	THR	5.3
1	A	488	PRO	5.3
1	A	506	ILE	5.1
1	B	619	ARG	4.9
1	A	715	VAL	4.7
1	A	352	ASP	4.5
1	A	351	LYS	4.3
1	A	392	SER	4.2
1	A	300	PHE	4.1
1	A	486	LYS	4.1
1	A	386	LYS	4.1
1	A	391	THR	4.1
1	A	713	THR	4.1
1	A	390	SER	3.8
1	A	487	GLN	3.8
1	A	388	ILE	3.8
1	A	489	ASP	3.7
1	A	350	THR	3.6
1	A	490	GLY	3.6

*Continued on next page...*

*Continued from previous page...*

Mol	Chain	Res	Type	RSRZ
1	A	389	GLU	3.5
1	A	619	ARG	3.5
1	B	620	LYS	3.4
1	A	491	SER	3.4
1	B	718	GLY	3.2
1	A	507	GLN	3.2
1	B	301	LEU	3.0
1	A	712	ASN	3.0
1	A	503	GLU	2.9
1	B	352	ASP	2.9
1	A	385	ASN	2.8
1	A	469	LYS	2.8
1	B	351	LYS	2.8
1	A	470	HIS	2.8
1	A	711	TRP	2.8
1	A	667	ARG	2.8
1	B	299	ARG	2.8
1	B	680	VAL	2.7
1	A	551	PHE	2.7
1	A	514	ARG	2.7
1	A	321	THR	2.6
1	A	393	THR	2.6
1	B	321	THR	2.6
1	A	617	ASP	2.6
1	A	299	ARG	2.6
1	B	677	VAL	2.6
1	A	714	HIS	2.6
1	B	389	GLU	2.5
1	B	667	ARG	2.5
1	A	354	LEU	2.5
1	A	415	CYS	2.5
1	A	618	MET	2.4
1	A	682	PRO	2.4
1	A	356	PRO	2.3
1	A	479	LEU	2.3
1	A	680	VAL	2.3
1	A	677	VAL	2.3
1	A	499	VAL	2.2
1	A	511	LYS	2.2
1	B	615	ASP	2.2
1	A	382	GLU	2.2
1	B	567	VAL	2.2

*Continued on next page...*

*Continued from previous page...*

Mol	Chain	Res	Type	RSRZ
1	A	550	LYS	2.2
1	B	691	PHE	2.1
1	B	591	THR	2.1
1	A	566	ALA	2.1
1	A	567	VAL	2.1
1	B	679	ILE	2.1
1	A	588	TYR	2.1
1	B	611	ALA	2.0
1	A	678	TRP	2.0
1	B	338	PRO	2.0
1	A	679	ILE	2.0
1	A	467	ASP	2.0
1	B	302	LYS	2.0

## 6.2 Non-standard residues in protein, DNA, RNA chains [i](#)

There are no non-standard protein/DNA/RNA residues in this entry.

## 6.3 Carbohydrates [i](#)

There are no carbohydrates in this entry.

## 6.4 Ligands [i](#)

In the following table, the Atoms column lists the number of modelled atoms in the group and the number defined in the chemical component dictionary. LLDF column lists the quality of electron density of the group with respect to its neighbouring residues in protein, DNA or RNA chains. The B-factors column lists the minimum, median, 95<sup>th</sup> percentile and maximum values of B factors of atoms in the group. The column labelled 'Q< 0.9' lists the number of atoms with occupancy less than 0.9.

Mol	Type	Chain	Res	Atoms	RSCC	RSR	LLDF	B-factors(Å <sup>2</sup> )	Q<0.9
5	ACT	B	860	4/4	0.89	0.22	9.05	46,51,51,51	0
5	ACT	A	860	4/4	0.90	0.19	8.35	63,64,65,66	0
4	PQW	B	800	36/36	0.92	0.19	1.32	23,49,114,119	0
4	PQW	A	800	36/36	0.86	0.20	1.17	18,40,98,99	0
2	HEM	B	750	43/43	0.98	0.15	1.02	23,25,33,37	0
2	HEM	A	750	43/43	0.98	0.18	0.91	26,28,35,42	0
3	H4B	B	760	17/17	0.98	0.15	0.43	25,27,29,31	0
3	H4B	A	760	17/17	0.97	0.15	0.33	24,26,30,31	0
6	ZN	A	900	1/1	1.00	0.07	-1.42	31,31,31,31	0

## 6.5 Other polymers [i](#)

There are no such residues in this entry.