



# Full wwPDB X-ray Structure Validation Report ⓘ

Feb 1, 2016 – 09:03 PM GMT

PDB ID : 4URN  
Title : Crystal Structure of Staph ParE 24kDa in complex with Novobiocin  
Authors : Lu, J.; Patel, S.; Sharma, N.; Soisson, S.; Kishii, R.; Takei, M.; Fukuda, Y.;  
Lumb, K.J.; Singh, S.B.  
Deposited on : 2014-07-01  
Resolution : 2.30 Å(reported)

This is a Full wwPDB X-ray Structure Validation Report for a publicly released PDB entry.  
We welcome your comments at [validation@mail.wwpdb.org](mailto:validation@mail.wwpdb.org)  
A user guide is available at  
<http://wwpdb.org/validation/2016/XrayValidationReportHelp>  
with specific help available everywhere you see the ⓘ symbol.

---

The following versions of software and data (see [references ⓘ](#)) were used in the production of this report:

MolProbity : 4.02b-467  
Mogul : 1.7 (RC4), CSD as536be (2015)  
Xtriage (Phenix) : 1.9-1692  
EDS : rb-20026688  
Percentile statistics : 20151230.v01 (using entries in the PDB archive December 30th 2015)  
Refmac : 5.8.0135  
CCP4 : 6.5.0  
Ideal geometry (proteins) : Engh & Huber (2001)  
Ideal geometry (DNA, RNA) : Parkinson et al. (1996)  
Validation Pipeline (wwPDB-VP) : trunk26865

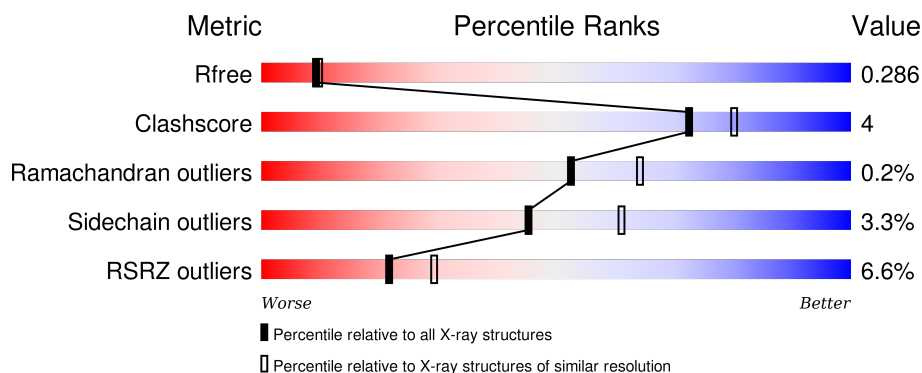
# 1 Overall quality at a glance

The following experimental techniques were used to determine the structure:

## *X-RAY DIFFRACTION*

The reported resolution of this entry is 2.30 Å.

Percentile scores (ranging between 0-100) for global validation metrics of the entry are shown in the following graphic. The table shows the number of entries on which the scores are based.



Metric	Whole archive (#Entries)	Similar resolution (#Entries, resolution range(Å))
$R_{free}$	91344	3852 (2.30-2.30)
Clashscore	102246	4452 (2.30-2.30)
Ramachandran outliers	100387	4410 (2.30-2.30)
Sidechain outliers	100360	4409 (2.30-2.30)
RSRZ outliers	91569	3857 (2.30-2.30)

The table below summarises the geometric issues observed across the polymeric chains and their fit to the electron density. The red, orange, yellow and green segments on the lower bar indicate the fraction of residues that contain outliers for  $\geq 3$ , 2, 1 and 0 types of geometric quality criteria. A grey segment represents the fraction of residues that are not modelled. The numeric value for each fraction is indicated below the corresponding segment, with a dot representing fractions  $\leq 5\%$ . The upper red bar (where present) indicates the fraction of residues that have poor fit to the electron density. The numeric value is given above the bar.

Mol	Chain	Length	Quality of chain
1	A	225	<div> <div>7%</div> <div> <div></div> <div>78%</div> <div>5%</div> <div>16%</div> </div> </div>
1	B	225	<div> <div>4%</div> <div> <div></div> <div>66%</div> <div>11%</div> <div>23%</div> </div> </div>
1	C	225	<div> <div>5%</div> <div> <div></div> <div>73%</div> <div>8%</div> <div>17%</div> </div> </div>

## 2 Entry composition [i](#)

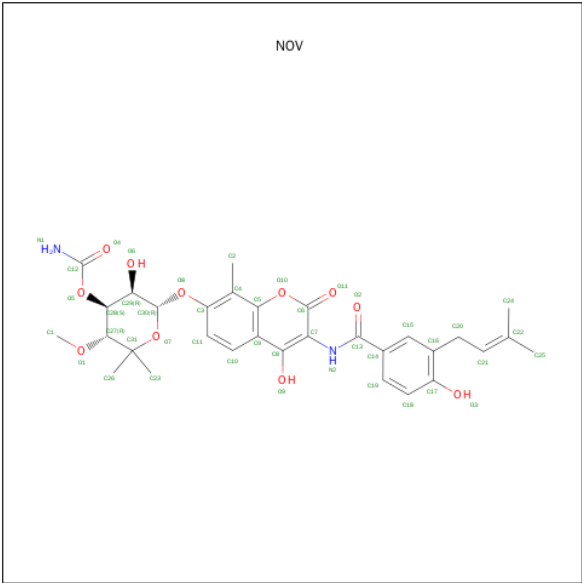
There are 3 unique types of molecules in this entry. The entry contains 4395 atoms, of which 0 are hydrogens and 0 are deuteriums.

In the tables below, the ZeroOcc column contains the number of atoms modelled with zero occupancy, the AltConf column contains the number of residues with at least one atom in alternate conformation and the Trace column contains the number of residues modelled with at most 2 atoms.

- Molecule 1 is a protein called DNA TOPOISOMERASE IV, B SUBUNIT.

Mol	Chain	Residues	Atoms					ZeroOcc	AltConf	Trace
1	A	188	Total	C	N	O	S	0	1	0
			1448	913	252	281	2			
1	B	174	Total	C	N	O	S	0	0	0
			1339	838	233	267	1			
1	C	186	Total	C	N	O	S	0	1	0
			1426	896	246	282	2			

- Molecule 2 is NOVOBIOCIN (three-letter code: NOV) (formula: C<sub>31</sub>H<sub>36</sub>N<sub>2</sub>O<sub>11</sub>).



Mol	Chain	Residues	Atoms				ZeroOcc	AltConf
2	A	1	Total	C	N	O	0	0
			44	31	2	11		
2	B	1	Total	C	N	O	0	0
			44	31	2	11		
2	C	1	Total	C	N	O	0	0
			44	31	2	11		

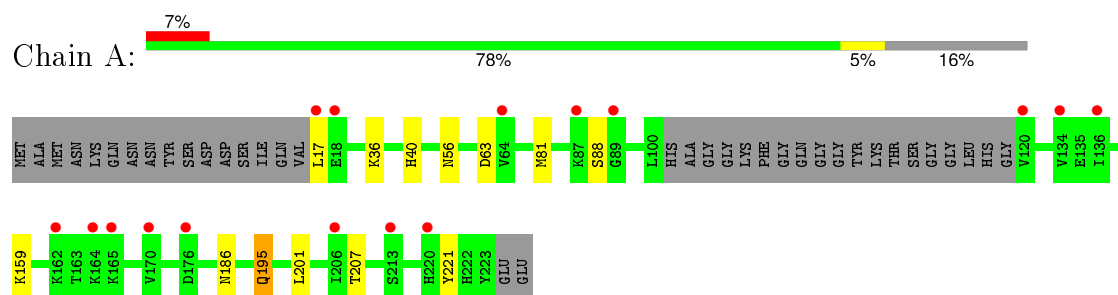
- Molecule 3 is water.

Mol	Chain	Residues	Atoms		ZeroOcc	AltConf
3	A	20	Total 20	O 20	0	0
3	B	18	Total 18	O 18	0	0
3	C	12	Total 12	O 12	0	0

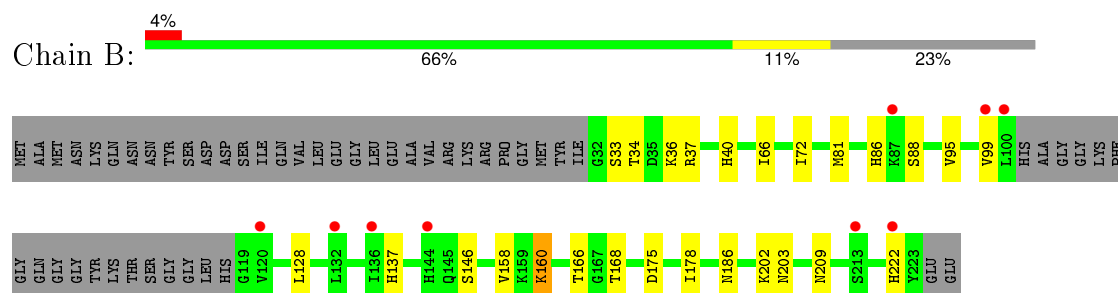
### 3 Residue-property plots [i](#)

These plots are drawn for all protein, RNA and DNA chains in the entry. The first graphic for a chain summarises the proportions of errors displayed in the second graphic. The second graphic shows the sequence view annotated by issues in geometry and electron density. Residues are color-coded according to the number of geometric quality criteria for which they contain at least one outlier: green = 0, yellow = 1, orange = 2 and red = 3 or more. A red dot above a residue indicates a poor fit to the electron density ( $RSRZ > 2$ ). Stretches of 2 or more consecutive residues without any outlier are shown as a green connector. Residues present in the sample, but not in the model, are shown in grey.

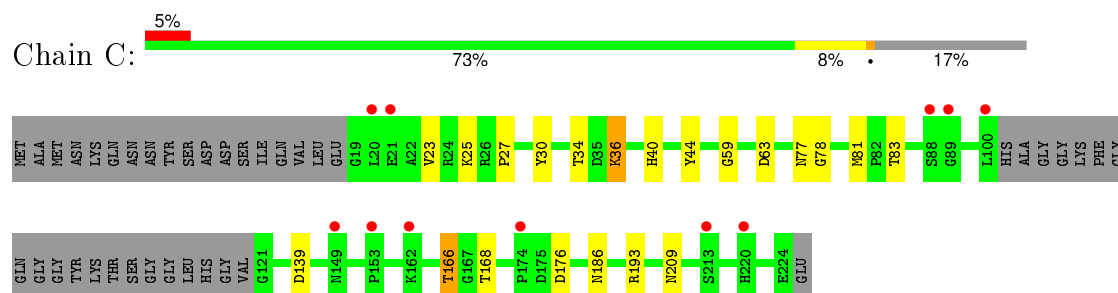
#### • Molecule 1: DNA TOPOISOMERASE IV, B SUBUNIT



#### • Molecule 1: DNA TOPOISOMERASE IV, B SUBUNIT



#### • Molecule 1: DNA TOPOISOMERASE IV, B SUBUNIT



## 4 Data and refinement statistics

Property	Value	Source
Space group	C 1 2 1	Depositor
Cell constants a, b, c, $\alpha$ , $\beta$ , $\gamma$	115.68Å 75.32Å 76.14Å 90.00° 92.85° 90.00°	Depositor
Resolution (Å)	19.47 – 2.30 19.26 – 2.30	Depositor EDS
% Data completeness (in resolution range)	96.8 (19.47-2.30) 96.8 (19.26-2.30)	Depositor EDS
$R_{merge}$	0.09	Depositor
$R_{sym}$	(Not available)	Depositor
$\langle I/\sigma(I) \rangle$ <sup>1</sup>	2.40 (at 2.30Å)	Xtriage
Refinement program	BUSTER 2.11.5	Depositor
R, $R_{free}$	0.223 , 0.267 0.234 , 0.286	Depositor DCC
$R_{free}$ test set	1416 reflections (5.29%)	DCC
Wilson B-factor (Å <sup>2</sup> )	42.5	Xtriage
Anisotropy	0.794	Xtriage
Bulk solvent $k_{sol}$ (e/Å <sup>3</sup> ), $B_{sol}$ (Å <sup>2</sup> )	0.39 , 53.3	EDS
Estimated twinning fraction	0.037 for -h,-k,l	Xtriage
L-test for twinning <sup>2</sup>	$\langle  L  \rangle = 0.47$ , $\langle L^2 \rangle = 0.31$	Xtriage
Outliers	0 of 28173 reflections	Xtriage
$F_o, F_c$ correlation	0.94	EDS
Total number of atoms	4395	wwPDB-VP
Average B, all atoms (Å <sup>2</sup> )	50.0	wwPDB-VP

Xtriage's analysis on translational NCS is as follows: *The largest off-origin peak in the Patterson function is 5.58% of the height of the origin peak. No significant pseudotranslation is detected.*

<sup>1</sup>Intensities estimated from amplitudes.

<sup>2</sup>Theoretical values of  $\langle |L| \rangle$ ,  $\langle L^2 \rangle$  for acentric reflections are 0.5, 0.375 respectively for untwinned datasets, and 0.333, 0.2 for perfectly twinned datasets.

## 5 Model quality [i](#)

### 5.1 Standard geometry [i](#)

Bond lengths and bond angles in the following residue types are not validated in this section: NOV

The Z score for a bond length (or angle) is the number of standard deviations the observed value is removed from the expected value. A bond length (or angle) with  $|Z| > 5$  is considered an outlier worth inspection. RMSZ is the root-mean-square of all Z scores of the bond lengths (or angles).

Mol	Chain	Bond lengths		Bond angles	
		RMSZ	$\# Z  > 5$	RMSZ	$\# Z  > 5$
1	A	0.51	0/1476	0.73	0/1991
1	B	0.52	0/1362	0.72	0/1839
1	C	0.53	0/1454	0.74	1/1964 (0.1%)
All	All	0.52	0/4292	0.73	1/5794 (0.0%)

There are no bond length outliers.

All (1) bond angle outliers are listed below:

Mol	Chain	Res	Type	Atoms	Z	Observed( $^{\circ}$ )	Ideal( $^{\circ}$ )
1	C	83	THR	N-CA-C	-5.03	97.42	111.00

There are no chirality outliers.

There are no planarity outliers.

### 5.2 Too-close contacts [i](#)

In the following table, the Non-H and H(model) columns list the number of non-hydrogen atoms and hydrogen atoms in the chain respectively. The H(added) column lists the number of hydrogen atoms added and optimized by MolProbity. The Clashes column lists the number of clashes within the asymmetric unit, whereas Symm-Clashes lists symmetry related clashes.

Mol	Chain	Non-H	H(model)	H(added)	Clashes	Symm-Clashes
1	A	1448	0	1425	10	0
1	B	1339	0	1298	20	0
1	C	1426	0	1380	10	0
2	A	44	0	34	2	0
2	B	44	0	34	0	0
2	C	44	0	34	1	0
3	A	20	0	0	1	0

*Continued on next page...*

*Continued from previous page...*

Mol	Chain	Non-H	H(model)	H(added)	Clashes	Symm-Clashes
3	B	18	0	0	0	0
3	C	12	0	0	0	0
All	All	4395	0	4205	36	0

The all-atom clashscore is defined as the number of clashes found per 1000 atoms (including hydrogen atoms). The all-atom clashscore for this structure is 4.

All (36) close contacts within the same asymmetric unit are listed below, sorted by their clash magnitude.

Atom-1	Atom-2	Interatomic distance (Å)	Clash overlap (Å)
1:A:56:ASN:HD22	1:B:33:SER:HB3	1.51	0.76
1:A:56:ASN:HD21	1:B:34:THR:H	1.40	0.68
1:A:56:ASN:ND2	1:B:34:THR:H	1.93	0.66
1:A:56:ASN:ND2	1:B:33:SER:HB3	2.11	0.65
1:B:40:HIS:HE1	1:B:186:ASN:H	1.42	0.65
1:A:40:HIS:HE1	1:A:186:ASN:H	1.47	0.61
1:C:40:HIS:CE1	1:C:186:ASN:H	2.20	0.59
1:B:81:MET:CE	1:B:168:THR:HG21	2.34	0.57
1:A:40:HIS:CE1	1:A:186:ASN:H	2.23	0.56
1:C:40:HIS:HE1	1:C:186:ASN:H	1.54	0.56
1:B:66:ILE:HG12	1:B:72:ILE:HD12	1.90	0.54
1:A:81:MET:HE1	2:A:2000:NOV:H11A	1.90	0.53
1:B:158:VAL:HG12	1:B:160:LYS:HG2	1.90	0.52
1:B:86:HIS:HD2	1:B:88:SER:H	1.58	0.52
1:C:78:GLY:O	1:C:166:THR:HG23	2.10	0.52
1:A:36:LYS:O	1:A:40:HIS:HD2	1.93	0.51
1:B:36:LYS:O	1:B:40:HIS:HD2	1.96	0.49
1:C:36:LYS:O	1:C:40:HIS:HD2	1.95	0.49
1:B:175:ASP:HB3	1:B:178:ILE:HG12	1.95	0.49
1:C:81:MET:CE	1:C:168:THR:HG21	2.43	0.49
1:C:27:PRO:HB2	1:C:34:THR:HG22	1.95	0.48
1:C:23:VAL:HA	1:C:30:TYR:CE2	2.49	0.48
1:B:128:LEU:HD22	1:B:178:ILE:HG21	1.97	0.47
1:B:86:HIS:CD2	1:B:88:SER:H	2.35	0.45
1:B:37:ARG:HH22	1:C:139:ASP:HA	1.81	0.45
1:B:203:ASN:HA	1:B:222:HIS:CE1	2.53	0.44
1:B:81:MET:HE3	1:B:168:THR:HG21	2.00	0.44
1:B:137:HIS:O	1:B:166:THR:HA	2.17	0.44
1:C:59:GLY:HA2	1:C:77:ASN:HB3	2.00	0.43
1:B:40:HIS:CE1	1:B:186:ASN:H	2.29	0.43
1:B:95:VAL:HG13	1:B:99:VAL:HG21	2.01	0.43

*Continued on next page...*



*Continued from previous page...*

Atom-1	Atom-2	Interatomic distance (Å)	Clash overlap (Å)
1:C:44:TYR:CE1	1:C:193:ARG:HG2	2.53	0.42
1:B:81:MET:HE2	1:B:168:THR:HG21	2.01	0.42
2:A:2000:NOV:H202	2:C:2000:NOV:H21	2.00	0.42
1:A:195:GLN:HG2	1:A:221:TYR:CD1	2.55	0.41
1:A:207:THR:HG23	3:A:2006:HOH:O	2.21	0.40

There are no symmetry-related clashes.

## 5.3 Torsion angles [i](#)

### 5.3.1 Protein backbone [i](#)

In the following table, the Percentiles column shows the percent Ramachandran outliers of the chain as a percentile score with respect to all X-ray entries followed by that with respect to entries of similar resolution.

The Analysed column shows the number of residues for which the backbone conformation was analysed, and the total number of residues.

Mol	Chain	Analysed	Favoured	Allowed	Outliers	Percentiles	
1	A	185/225 (82%)	178 (96%)	7 (4%)	0	100	100
1	B	170/225 (76%)	165 (97%)	4 (2%)	1 (1%)	30	36
1	C	183/225 (81%)	174 (95%)	9 (5%)	0	100	100
All	All	538/675 (80%)	517 (96%)	20 (4%)	1 (0%)	52	64

All (1) Ramachandran outliers are listed below:

Mol	Chain	Res	Type
1	B	202	LYS

### 5.3.2 Protein sidechains [i](#)

In the following table, the Percentiles column shows the percent sidechain outliers of the chain as a percentile score with respect to all X-ray entries followed by that with respect to entries of similar resolution.

The Analysed column shows the number of residues for which the sidechain conformation was analysed, and the total number of residues.

Mol	Chain	Analysed	Rotameric	Outliers	Percentiles	
1	A	158/191 (83%)	152 (96%)	6 (4%)	40	54
1	B	148/191 (78%)	145 (98%)	3 (2%)	63	79
1	C	155/191 (81%)	149 (96%)	6 (4%)	39	53
All	All	461/573 (80%)	446 (97%)	15 (3%)	45	61

All (15) residues with a non-rotameric sidechain are listed below:

Mol	Chain	Res	Type
1	A	17	LEU
1	A	63	ASP
1	A	88	SER
1	A	159	LYS
1	A	195	GLN
1	A	201	LEU
1	B	146	SER
1	B	160	LYS
1	B	209	ASN
1	C	25	LYS
1	C	36	LYS
1	C	63	ASP
1	C	166	THR
1	C	176	ASP
1	C	209	ASN

Some sidechains can be flipped to improve hydrogen bonding and reduce clashes. All (16) such sidechains are listed below:

Mol	Chain	Res	Type
1	A	40	HIS
1	A	56	ASN
1	A	137	HIS
1	A	145	GLN
1	A	195	GLN
1	B	40	HIS
1	B	56	ASN
1	B	86	HIS
1	B	137	HIS
1	B	145	GLN
1	C	40	HIS
1	C	56	ASN
1	C	86	HIS
1	C	137	HIS

*Continued on next page...*

*Continued from previous page...*

Mol	Chain	Res	Type
1	C	209	ASN
1	C	218	GLN

### 5.3.3 RNA ⓘ

There are no RNA molecules in this entry.

## 5.4 Non-standard residues in protein, DNA, RNA chains ⓘ

There are no non-standard protein/DNA/RNA residues in this entry.

## 5.5 Carbohydrates ⓘ

There are no carbohydrates in this entry.

## 5.6 Ligand geometry ⓘ

3 ligands are modelled in this entry.

In the following table, the Counts columns list the number of bonds (or angles) for which Mogul statistics could be retrieved, the number of bonds (or angles) that are observed in the model and the number of bonds (or angles) that are defined in the chemical component dictionary. The Link column lists molecule types, if any, to which the group is linked. The Z score for a bond length (or angle) is the number of standard deviations the observed value is removed from the expected value. A bond length (or angle) with  $|Z| > 2$  is considered an outlier worth inspection. RMSZ is the root-mean-square of all Z scores of the bond lengths (or angles).

Mol	Type	Chain	Res	Link	Bond lengths			Bond angles		
					Counts	RMSZ	$\# Z  > 2$	Counts	RMSZ	$\# Z  > 2$
2	NOV	A	2000	-	43,47,47	0.81	1 (2%)	50,70,70	0.95	2 (4%)
2	NOV	B	2000	-	43,47,47	0.79	1 (2%)	50,70,70	1.04	4 (8%)
2	NOV	C	2000	-	43,47,47	0.58	0	50,70,70	1.01	2 (4%)

In the following table, the Chirals column lists the number of chiral outliers, the number of chiral centers analysed, the number of these observed in the model and the number defined in the chemical component dictionary. Similar counts are reported in the Torsion and Rings columns. '-' means no outliers of that kind were identified.

Mol	Type	Chain	Res	Link	Chirals	Torsions	Rings
2	NOV	A	2000	-	-	0/23/46/46	0/4/4/4

*Continued on next page...*

*Continued from previous page...*

Mol	Type	Chain	Res	Link	Chirals	Torsions	Rings
2	NOV	B	2000	-	-	0/23/46/46	0/4/4/4
2	NOV	C	2000	-	-	0/23/46/46	0/4/4/4

All (2) bond length outliers are listed below:

Mol	Chain	Res	Type	Atoms	Z	Observed(Å)	Ideal(Å)
2	B	2000	NOV	C31-C27	3.82	1.60	1.52
2	A	2000	NOV	C31-C27	3.90	1.60	1.52

All (8) bond angle outliers are listed below:

Mol	Chain	Res	Type	Atoms	Z	Observed(°)	Ideal(°)
2	A	2000	NOV	C6-C7-N2	-3.32	111.70	118.69
2	C	2000	NOV	C6-C7-N2	-3.28	111.78	118.69
2	B	2000	NOV	C6-C7-N2	-3.27	111.81	118.69
2	B	2000	NOV	O7-C30-O8	2.18	114.72	109.33
2	C	2000	NOV	C3-O8-C30	2.24	122.13	117.96
2	A	2000	NOV	C16-C20-C21	2.61	117.75	112.89
2	B	2000	NOV	O5-C28-C29	2.62	113.57	107.76
2	B	2000	NOV	O6-C29-C28	2.62	116.08	109.87

There are no chirality outliers.

There are no torsion outliers.

There are no ring outliers.

2 monomers are involved in 2 short contacts:

Mol	Chain	Res	Type	Clashes	Symm-Clashes
2	A	2000	NOV	2	0
2	C	2000	NOV	1	0

## 5.7 Other polymers [i](#)

There are no such residues in this entry.

## 5.8 Polymer linkage issues [i](#)

There are no chain breaks in this entry.

## 6 Fit of model and data ⓘ

### 6.1 Protein, DNA and RNA chains ⓘ

In the following table, the column labelled ‘#RSRZ> 2’ contains the number (and percentage) of RSRZ outliers, followed by percent RSRZ outliers for the chain as percentile scores relative to all X-ray entries and entries of similar resolution. The OWAB column contains the minimum, median, 95<sup>th</sup> percentile and maximum values of the occupancy-weighted average B-factor per residue. The column labelled ‘Q< 0.9’ lists the number of (and percentage) of residues with an average occupancy less than 0.9.

Mol	Chain	Analysed	<RSRZ>	#RSRZ>2	OWAB(Å <sup>2</sup> )	Q<0.9
1	A	188/225 (83%)	0.53	16 (8%) 13 19	35, 50, 65, 76	0
1	B	174/225 (77%)	0.48	9 (5%) 31 39	33, 48, 67, 109	0
1	C	186/225 (82%)	0.51	11 (5%) 26 34	34, 49, 69, 94	0
All	All	548/675 (81%)	0.51	36 (6%) 22 29	33, 49, 67, 109	0

All (36) RSRZ outliers are listed below:

Mol	Chain	Res	Type	RSRZ
1	B	100	LEU	7.6
1	A	164	LYS	4.6
1	C	89	GLY	3.7
1	C	220	HIS	3.6
1	A	220	HIS	3.4
1	B	87	LYS	3.3
1	C	213	SER	3.2
1	C	149	ASN	3.2
1	B	132	LEU	3.2
1	C	162[A]	LYS	3.1
1	A	162	LYS	3.0
1	C	88	SER	3.0
1	A	120	VAL	2.9
1	B	99	VAL	2.7
1	A	87	LYS	2.7
1	A	206	ILE	2.7
1	A	18	GLU	2.6
1	C	153	PRO	2.6
1	B	136	ILE	2.5
1	A	165	LYS	2.5
1	C	100	LEU	2.5
1	B	120	VAL	2.4
1	A	134	VAL	2.3

*Continued on next page...*

*Continued from previous page...*

Mol	Chain	Res	Type	RSRZ
1	A	136	ILE	2.3
1	A	89	GLY	2.3
1	C	174	PRO	2.3
1	C	20	LEU	2.3
1	A	176	ASP	2.3
1	B	222	HIS	2.2
1	B	144	HIS	2.2
1	A	17	LEU	2.1
1	A	213	SER	2.1
1	B	213	SER	2.1
1	A	170	VAL	2.1
1	C	21	GLU	2.1
1	A	64	VAL	2.0

## 6.2 Non-standard residues in protein, DNA, RNA chains [i](#)

There are no non-standard protein/DNA/RNA residues in this entry.

## 6.3 Carbohydrates [i](#)

There are no carbohydrates in this entry.

## 6.4 Ligands [i](#)

In the following table, the Atoms column lists the number of modelled atoms in the group and the number defined in the chemical component dictionary. LLDF column lists the quality of electron density of the group with respect to its neighbouring residues in protein, DNA or RNA chains. The B-factors column lists the minimum, median, 95<sup>th</sup> percentile and maximum values of B factors of atoms in the group. The column labelled 'Q< 0.9' lists the number of atoms with occupancy less than 0.9.

Mol	Type	Chain	Res	Atoms	RSCC	RSR	LLDF	B-factors(Å <sup>2</sup> )	Q<0.9
2	NOV	A	2000	44/44	0.86	0.19	1.29	31,46,73,74	0
2	NOV	C	2000	44/44	0.88	0.16	0.43	34,46,70,73	0
2	NOV	B	2000	44/44	0.91	0.14	-0.14	31,47,88,89	0

## 6.5 Other polymers [i](#)

There are no such residues in this entry.