



Full wwPDB X-ray Structure Validation Report ⓘ

Jan 31, 2016 – 10:41 PM GMT

PDB ID : 1USX
Title : Crystal structure of the Newcastle disease virus hemagglutinin-neuraminidase complexed with thiosialoside
Authors : Zaitsev, V.; Itzstein, M.; Groves, D.; Kiefel, M.; Takimoto, T.; Portner, A.; Taylor, G.
Deposited on : 2003-12-01
Resolution : 2.70 Å(reported)

This is a Full wwPDB X-ray Structure Validation Report for a publicly released PDB entry.
We welcome your comments at validation@mail.wwpdb.org
A user guide is available at
<http://wwpdb.org/validation/2016/XrayValidationReportHelp>
with specific help available everywhere you see the ⓘ symbol.

The following versions of software and data (see [references ⓘ](#)) were used in the production of this report:

MolProbity : 4.02b-467
Mogul : 1.7 (RC4), CSD as536be (2015)
Xtriage (Phenix) : **NOT EXECUTED**
EDS : **NOT EXECUTED**
Percentile statistics : 20151230.v01 (using entries in the PDB archive December 30th 2015)
Ideal geometry (proteins) : Engh & Huber (2001)
Ideal geometry (DNA, RNA) : Parkinson et al. (1996)
Validation Pipeline (wwPDB-VP) : trunk26865

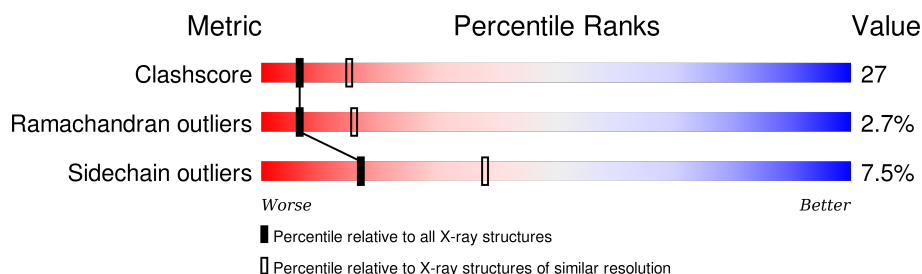
1 Overall quality at a glance ⓘ

The following experimental techniques were used to determine the structure:

X-RAY DIFFRACTION

The reported resolution of this entry is 2.70 Å.

Percentile scores (ranging between 0-100) for global validation metrics of the entry are shown in the following graphic. The table shows the number of entries on which the scores are based.



Metric	Whole archive (#Entries)	Similar resolution (#Entries, resolution range(Å))
Clashscore	102246	2422 (2.70-2.70)
Ramachandran outliers	100387	2382 (2.70-2.70)
Sidechain outliers	100360	2382 (2.70-2.70)

The table below summarises the geometric issues observed across the polymeric chains and their fit to the electron density. The red, orange, yellow and green segments on the lower bar indicate the fraction of residues that contain outliers for ≥ 3 , 2, 1 and 0 types of geometric quality criteria. A grey segment represents the fraction of residues that are not modelled. The numeric value for each fraction is indicated below the corresponding segment, with a dot representing fractions $\leq 5\%$. The upper red bar (where present) indicates the fraction of residues that have poor fit to the electron density. The numeric value is given above the bar.

Note EDS was not executed.

Mol	Chain	Length	Quality of chain
1	A	454	
1	B	454	
1	C	454	

2 Entry composition [i](#)

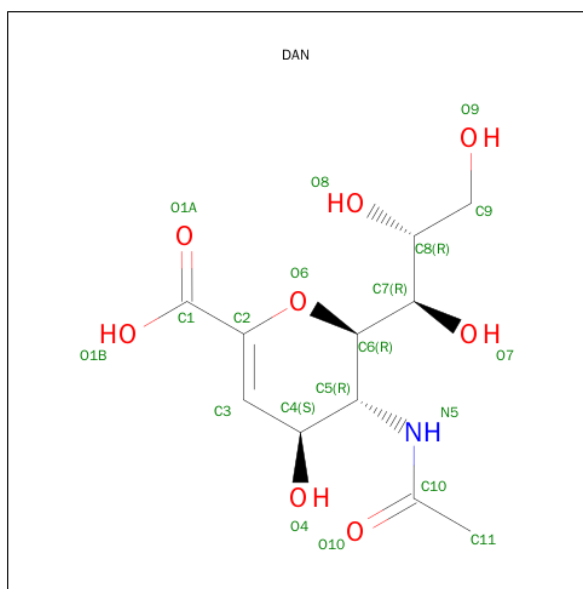
There are 4 unique types of molecules in this entry. The entry contains 10497 atoms, of which 0 are hydrogens and 0 are deuteriums.

In the tables below, the ZeroOcc column contains the number of atoms modelled with zero occupancy, the AltConf column contains the number of residues with at least one atom in alternate conformation and the Trace column contains the number of residues modelled with at most 2 atoms.

- Molecule 1 is a protein called HEMAGGLUTININ-NEURAMINIDASE GLYCOPROTEIN.

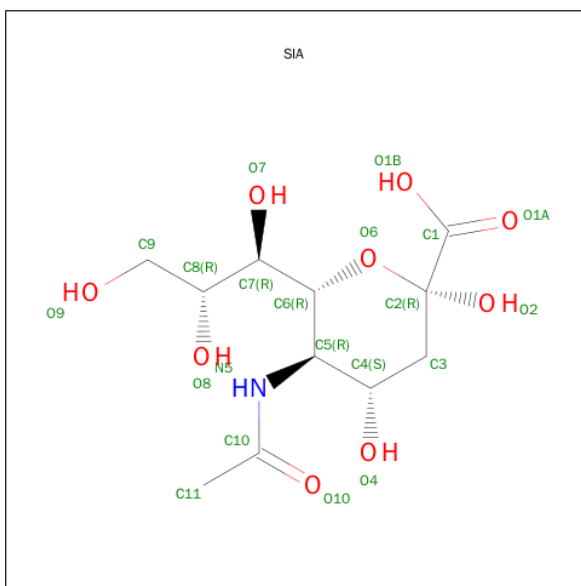
Mol	Chain	Residues	Atoms					ZeroOcc	AltConf	Trace
1	A	447	Total	C	N	O	S	0	0	1
			3446	2172	588	667	19			
1	B	447	Total	C	N	O	S	0	0	1
			3446	2172	588	667	19			
1	C	447	Total	C	N	O	S	0	0	1
			3446	2172	588	667	19			

- Molecule 2 is 2-DEOXY-2,3-DEHYDRO-N-ACETYL-NEURAMINIC ACID (three-letter code: DAN) (formula: C₁₁H₁₇NO₈).



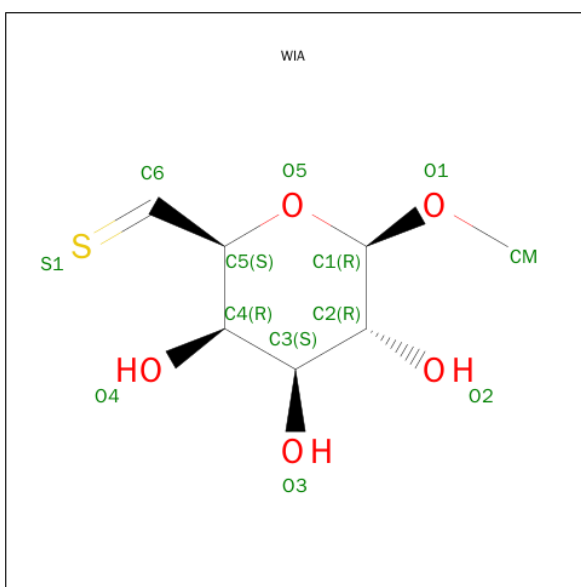
Mol	Chain	Residues	Atoms				ZeroOcc	AltConf
2	A	1	Total	C	N	O	0	0
			20	11	1	8		
2	B	1	Total	C	N	O	0	0
			20	11	1	8		
2	C	1	Total	C	N	O	0	0
			20	11	1	8		

- Molecule 3 is SUGAR (O-SIALIC ACID) (three-letter code: SIA) (formula: $C_{11}H_{19}NO_9$).



Mol	Chain	Residues	Atoms				ZeroOcc	AltConf
3	A	1	Total	C	N	O	0	0
			20	11	1	8		
3	B	1	Total	C	N	O	0	0
			20	11	1	8		
3	C	1	Total	C	N	O	0	0
			20	11	1	8		

- Molecule 4 is METHYL(6S)-1-THIO-L-MANNO-HEXODIALDO-6,2-PYRANOSIDE (three-letter code: WIA) (formula: $C_7H_{12}O_5S$).



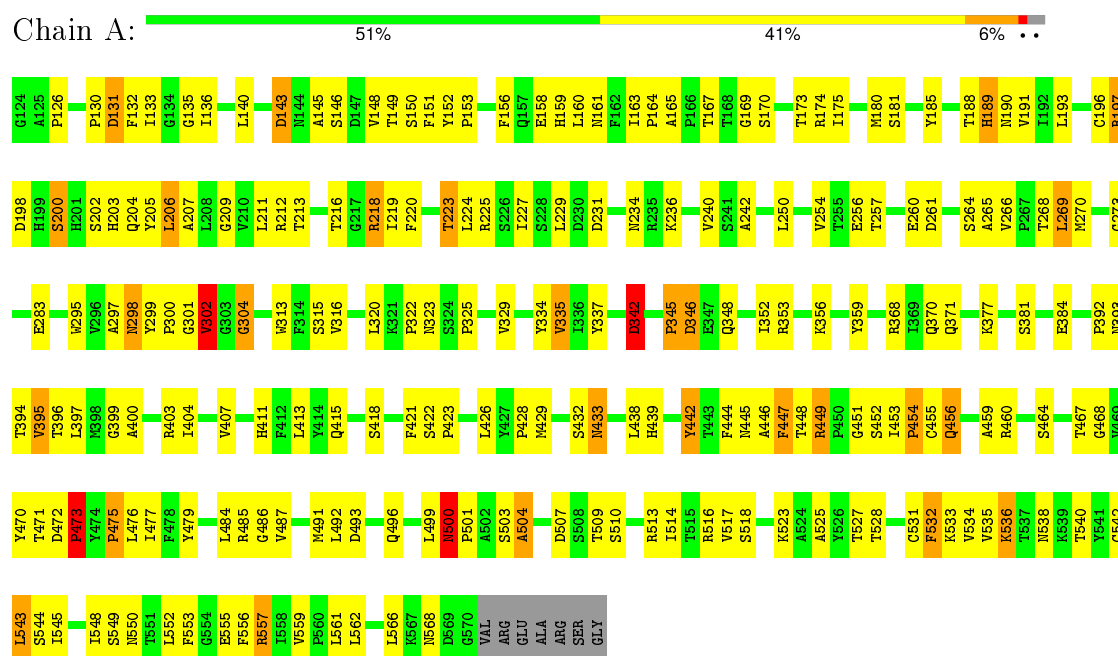
Mol	Chain	Residues	Atoms				ZeroOcc	AltConf
4	A	1	Total 13	C 7	O 5	S 1	0	0
4	B	1	Total 13	C 7	O 5	S 1	0	0
4	C	1	Total 13	C 7	O 5	S 1	0	0

3 Residue-property plots

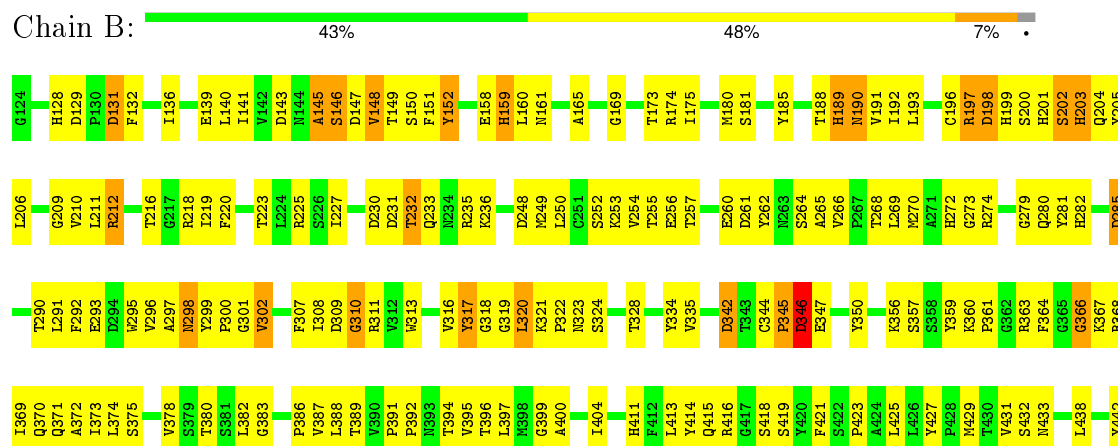
These plots are drawn for all protein, RNA and DNA chains in the entry. The first graphic for a chain summarises the proportions of errors displayed in the second graphic. The second graphic shows the sequence view annotated by issues in geometry and electron density. Residues are color-coded according to the number of geometric quality criteria for which they contain at least one outlier: green = 0, yellow = 1, orange = 2 and red = 3 or more. A red dot above a residue indicates a poor fit to the electron density ($RSRZ > 2$). Stretches of 2 or more consecutive residues without any outlier are shown as a green connector. Residues present in the sample, but not in the model, are shown in grey.

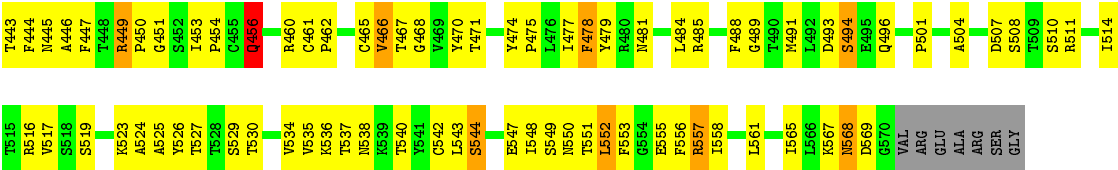
Note EDS was not executed.

• Molecule 1: HEMAGGLUTININ-NEURAMINIDASE GLYCOPROTEIN

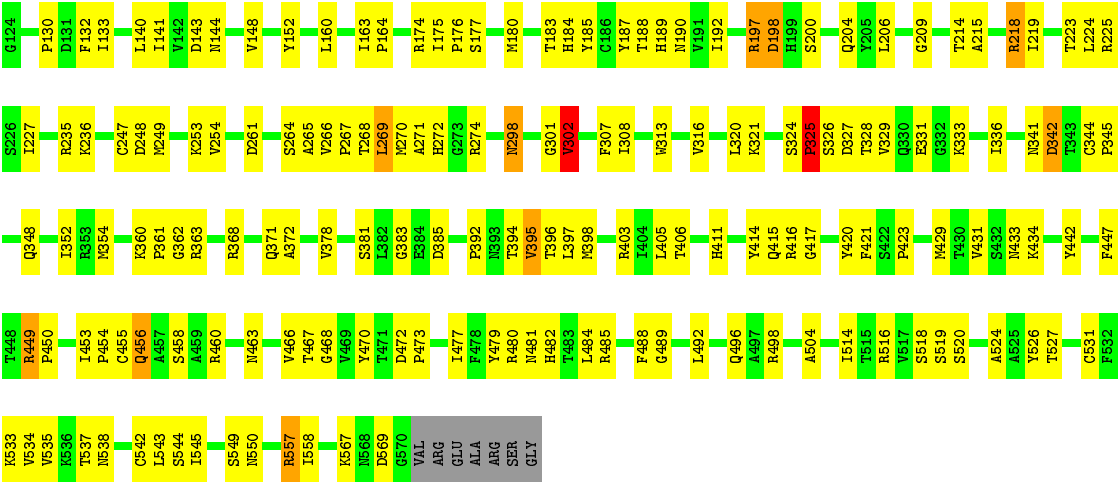


• Molecule 1: HEMAGGLUTININ-NEURAMINIDASE GLYCOPROTEIN





● Molecule 1: HEMAGGLUTININ-NEURAMINIDASE GLYCOPROTEIN



4 Data and refinement statistics

Xtriage (Phenix) and EDS were not executed - this section will therefore be incomplete.

Property	Value	Source
Space group	P 41 21 2	Depositor
Cell constants a, b, c, α , β , γ	115.07Å 115.07Å 283.96Å 90.00° 90.00° 90.00°	Depositor
Resolution (Å)	12.00 – 2.70	Depositor
% Data completeness (in resolution range)	79.6 (12.00-2.70)	Depositor
R_{merge}	0.08	Depositor
R_{sym}	(Not available)	Depositor
Refinement program	CNS 1.1	Depositor
R, R_{free}	0.225 , 0.289	Depositor
Estimated twinning fraction	No twinning to report.	Xtriage
Total number of atoms	10497	wwPDB-VP
Average B, all atoms (Å ²)	30.0	wwPDB-VP

5 Model quality [i](#)

5.1 Standard geometry [i](#)

Bond lengths and bond angles in the following residue types are not validated in this section: SIA, DAN, WIA

The Z score for a bond length (or angle) is the number of standard deviations the observed value is removed from the expected value. A bond length (or angle) with $|Z| > 5$ is considered an outlier worth inspection. RMSZ is the root-mean-square of all Z scores of the bond lengths (or angles).

Mol	Chain	Bond lengths		Bond angles	
		RMSZ	# Z >5	RMSZ	# Z >5
1	A	0.40	0/3531	0.68	1/4804 (0.0%)
1	B	0.43	0/3531	0.69	0/4804
1	C	0.40	0/3531	0.71	0/4804
All	All	0.41	0/10593	0.69	1/14412 (0.0%)

There are no bond length outliers.

All (1) bond angle outliers are listed below:

Mol	Chain	Res	Type	Atoms	Z	Observed(°)	Ideal(°)
1	A	442	TYR	N-CA-C	-5.28	96.76	111.00

There are no chirality outliers.

There are no planarity outliers.

5.2 Too-close contacts [i](#)

In the following table, the Non-H and H(model) columns list the number of non-hydrogen atoms and hydrogen atoms in the chain respectively. The H(added) column lists the number of hydrogen atoms added and optimized by MolProbity. The Clashes column lists the number of clashes within the asymmetric unit, whereas Symm-Clashes lists symmetry related clashes.

Mol	Chain	Non-H	H(model)	H(added)	Clashes	Symm-Clashes
1	A	3446	0	3342	184	0
1	B	3446	0	3342	253	0
1	C	3446	0	3342	147	0
2	A	20	0	16	0	0
2	B	20	0	16	1	0
2	C	20	0	16	1	0
3	A	20	0	16	2	0

Continued on next page...

Continued from previous page...

Mol	Chain	Non-H	H(model)	H(added)	Clashes	Symm-Clashes
3	B	20	0	13	0	0
3	C	20	0	13	1	0
4	A	13	0	12	0	0
4	B	13	0	12	0	0
4	C	13	0	12	1	0
All	All	10497	0	10152	567	0

The all-atom clashscore is defined as the number of clashes found per 1000 atoms (including hydrogen atoms). The all-atom clashscore for this structure is 27.

All (567) close contacts within the same asymmetric unit are listed below, sorted by their clash magnitude.

Atom-1	Atom-2	Interatomic distance (Å)	Clash overlap (Å)
1:B:456:GLN:H	1:B:456:GLN:NE2	1.58	1.00
1:A:219:ILE:HD11	1:A:562:LEU:HD21	1.43	1.00
1:A:550:ASN:HB2	1:A:557:ARG:HG2	1.44	0.99
1:A:500:ASN:HB3	1:A:516:ARG:HH22	1.29	0.96
1:C:268:THR:H	1:C:298:ASN:HD21	1.13	0.93
1:B:320:LEU:HD21	1:B:370:GLN:HB3	1.51	0.91
1:B:268:THR:H	1:B:298:ASN:HD21	1.20	0.88
1:B:320:LEU:HD11	1:B:370:GLN:HB2	1.55	0.87
1:B:456:GLN:H	1:B:456:GLN:HE21	1.20	0.87
1:B:301:GLY:O	1:B:302:VAL:HG22	1.75	0.86
1:B:253:LYS:HB2	1:B:269:LEU:HD12	1.58	0.86
1:B:203:HIS:CB	1:B:230:ASP:HB2	2.05	0.85
1:B:268:THR:N	1:B:298:ASN:HD21	1.75	0.85
1:B:392:PRO:HG2	1:B:395:VAL:HG12	1.59	0.84
1:B:550:ASN:HB2	1:B:557:ARG:HG2	1.61	0.83
1:B:191:VAL:HB	1:B:203:HIS:CD2	2.13	0.83
1:A:447:PHE:CE1	1:A:491:MET:HB3	2.12	0.83
1:A:453:ILE:HA	1:A:456:GLN:NE2	1.95	0.82
1:A:550:ASN:HA	1:A:557:ARG:NH1	1.95	0.81
1:C:371:GLN:HE21	1:C:415:GLN:HE21	1.27	0.81
1:B:268:THR:H	1:B:298:ASN:ND2	1.79	0.80
1:B:252:SER:OG	1:B:300:PRO:HD3	1.82	0.79
1:B:256:GLU:HB2	1:B:260:GLU:CB	2.12	0.79
1:B:299:TYR:O	1:B:316:VAL:HG23	1.82	0.79
1:C:316:VAL:HG13	1:C:372:ALA:HB3	1.65	0.78
1:A:407:VAL:HG21	1:A:475:PRO:HB2	1.66	0.78
1:B:218:ARG:HG2	1:B:218:ARG:HH11	1.49	0.77
1:C:516:ARG:HG2	1:C:516:ARG:HH11	1.50	0.77

Continued on next page...

Continued from previous page...

Atom-1	Atom-2	Interatomic distance (Å)	Clash overlap (Å)
1:A:453:ILE:HG13	1:A:496:GLN:NE2	1.99	0.76
1:C:516:ARG:HE	1:C:519:SER:HA	1.50	0.76
1:A:371:GLN:HE21	1:A:399:GLY:HA2	1.51	0.75
1:A:342:ASP:OD2	1:A:460:ARG:HD3	1.85	0.75
1:C:268:THR:H	1:C:298:ASN:ND2	1.85	0.74
1:C:449:ARG:NH2	1:C:455:CYS:O	2.20	0.73
1:B:218:ARG:NH1	1:B:218:ARG:HG2	2.02	0.73
1:C:132:PHE:CE1	1:C:534:VAL:HG22	2.24	0.72
1:B:456:GLN:N	1:B:456:GLN:HE21	1.86	0.72
1:C:190:ASN:HD22	1:C:204:GLN:HE21	1.35	0.71
1:B:203:HIS:HB3	1:B:230:ASP:HB2	1.72	0.71
1:A:268:THR:H	1:A:298:ASN:HD21	1.38	0.71
1:C:190:ASN:HB2	1:C:204:GLN:HE22	1.54	0.71
1:B:371:GLN:NE2	1:B:415:GLN:HE21	1.89	0.71
1:A:371:GLN:HE22	1:A:400:ALA:H	1.38	0.70
1:B:320:LEU:CD1	1:B:368:ARG:HG2	2.21	0.70
1:A:550:ASN:CB	1:A:557:ARG:HG2	2.20	0.70
1:B:320:LEU:HG	1:B:368:ARG:O	1.92	0.70
1:A:190:ASN:HD22	1:A:204:GLN:HE21	1.39	0.70
1:B:453:ILE:HG23	1:B:454:PRO:HA	1.74	0.69
1:C:141:ILE:HB	1:C:477:ILE:HG12	1.75	0.69
1:B:190:ASN:OD1	1:B:236:LYS:HE3	1.91	0.69
1:C:453:ILE:HG23	1:C:454:PRO:HA	1.73	0.69
1:A:377:LYS:HD3	1:A:384:GLU:OE2	1.92	0.69
1:B:206:LEU:HD21	1:B:249:MET:SD	2.33	0.69
1:C:411:HIS:HB2	1:C:429:MET:O	1.93	0.69
1:B:256:GLU:HB2	1:B:260:GLU:HB3	1.73	0.68
1:B:467:THR:HG23	1:B:468:GLY:N	2.07	0.68
1:A:456:GLN:NE2	1:A:456:GLN:H	1.91	0.68
1:B:372:ALA:HB1	1:B:388:LEU:HD11	1.74	0.68
1:B:537:THR:HG22	1:C:537:THR:HG22	1.74	0.68
1:A:212:ARG:HB2	1:A:220:PHE:CZ	2.29	0.68
1:A:202:SER:OG	1:A:236:LYS:HE3	1.93	0.68
1:B:256:GLU:HB2	1:B:260:GLU:HB2	1.75	0.68
1:A:205:TYR:C	1:A:206:LEU:HD23	2.13	0.68
1:A:197:ARG:HD3	1:A:198:ASP:N	2.10	0.67
1:A:550:ASN:HB2	1:A:557:ARG:CG	2.21	0.67
1:B:320:LEU:HD12	1:B:368:ARG:HG2	1.76	0.67
1:A:456:GLN:CD	1:A:456:GLN:H	1.98	0.67
1:A:411:HIS:HB2	1:A:429:MET:O	1.95	0.67
1:A:190:ASN:HD22	1:A:204:GLN:NE2	1.93	0.66

Continued on next page...

Continued from previous page...

Atom-1	Atom-2	Interatomic distance (Å)	Clash overlap (Å)
1:B:373:ILE:HD11	1:B:413:LEU:HD22	1.77	0.66
1:A:212:ARG:HB2	1:A:220:PHE:CE1	2.31	0.66
1:B:197:ARG:H	1:B:197:ARG:HD3	1.61	0.66
1:B:174:ARG:HH12	2:B:1572:DAN:H3	1.60	0.66
1:C:456:GLN:HG2	1:C:458:SER:H	1.61	0.65
1:A:479:TYR:CD1	1:A:485:ARG:HD2	2.31	0.65
1:B:467:THR:HG23	1:B:468:GLY:H	1.62	0.64
1:A:231:ASP:HA	1:B:216:THR:HG23	1.79	0.64
1:A:322:PRO:O	1:A:323:ASN:HB2	1.95	0.64
1:A:197:ARG:HD3	1:A:198:ASP:H	1.62	0.64
1:A:503:SER:O	1:A:504:ALA:HB2	1.97	0.64
1:B:453:ILE:HG13	1:B:496:GLN:NE2	2.13	0.64
1:C:456:GLN:H	1:C:456:GLN:NE2	1.96	0.64
1:A:500:ASN:HB3	1:A:516:ARG:NH2	2.09	0.63
1:B:235:ARG:O	1:B:236:LYS:HG2	1.99	0.63
1:B:523:LYS:HB3	1:B:549:SER:HB3	1.81	0.63
1:B:413:LEU:HD23	1:B:438:LEU:HD11	1.80	0.63
1:A:453:ILE:HA	1:A:456:GLN:HE22	1.63	0.63
1:B:201:HIS:O	1:B:202:SER:HB3	1.99	0.63
1:B:132:PHE:CE1	1:B:534:VAL:HG22	2.35	0.62
1:B:203:HIS:HB2	1:B:230:ASP:HB2	1.82	0.61
1:B:189:HIS:ND1	1:B:558:ILE:HD12	2.14	0.61
1:B:291:LEU:HG	1:B:292:PHE:CE1	2.35	0.61
1:A:320:LEU:HD12	1:A:368:ARG:HG2	1.82	0.61
1:B:313:TRP:CZ2	1:B:431:VAL:HG21	2.35	0.61
1:C:206:LEU:HD21	1:C:249:MET:SD	2.41	0.61
1:B:504:ALA:HB2	1:B:514:ILE:HG22	1.83	0.61
1:B:535:VAL:HG23	1:C:215:ALA:O	2.00	0.60
1:B:370:GLN:HG3	1:B:371:GLN:O	2.01	0.60
1:C:185:TYR:OH	1:C:223:THR:HG22	2.02	0.60
1:B:451:GLY:O	1:B:496:GLN:HG2	2.01	0.60
1:C:224:LEU:O	1:C:225:ARG:HD3	2.02	0.60
1:B:525:ALA:HB3	1:B:547:GLU:HB2	1.84	0.60
1:C:264:SER:OG	1:C:264:SER:O	2.20	0.60
1:A:370:GLN:NE2	1:A:371:GLN:H	1.99	0.60
1:A:269:LEU:HD22	1:A:270:MET:H	1.67	0.60
1:A:268:THR:H	1:A:298:ASN:ND2	2.00	0.59
1:B:191:VAL:HB	1:B:203:HIS:HD2	1.61	0.59
1:B:371:GLN:HE22	1:B:400:ALA:H	1.48	0.59
1:C:481:ASN:O	1:C:482:HIS:HB2	2.02	0.59
1:B:346:ASP:HB3	1:B:350:TYR:HD2	1.68	0.59

Continued on next page...

Continued from previous page...

Atom-1	Atom-2	Interatomic distance (Å)	Clash overlap (Å)
1:B:449:ARG:HH12	1:B:451:GLY:HA3	1.67	0.58
1:B:316:VAL:HG22	1:B:317:TYR:N	2.18	0.58
1:B:396:THR:HA	1:B:427:TYR:HE2	1.69	0.58
1:B:516:ARG:HG2	1:B:516:ARG:HH11	1.69	0.58
1:C:144:ASN:OD1	1:C:480:ARG:HG3	2.04	0.58
1:B:396:THR:HA	1:B:427:TYR:CE2	2.39	0.58
1:A:555:GLU:HG2	1:A:556:PHE:CD2	2.39	0.58
1:C:253:LYS:HE3	1:C:271:ALA:HB2	1.84	0.58
1:C:342:ASP:OD2	1:C:460:ARG:HD3	2.04	0.58
1:B:516:ARG:HE	1:B:519:SER:HA	1.67	0.58
1:C:144:ASN:ND2	1:C:480:ARG:HG3	2.18	0.58
1:B:491:MET:SD	1:B:511:ARG:NH1	2.76	0.58
1:A:335:VAL:HG11	1:A:337:TYR:CE2	2.39	0.57
1:A:550:ASN:HA	1:A:557:ARG:HH12	1.68	0.57
1:B:386:PRO:O	1:B:387:VAL:HG23	2.05	0.57
1:A:447:PHE:CD1	1:A:491:MET:HB3	2.38	0.57
1:A:467:THR:HG23	1:A:468:GLY:N	2.20	0.57
1:A:301:GLY:C	1:A:302:VAL:HG13	2.25	0.57
1:C:313:TRP:CZ2	1:C:431:VAL:HG21	2.40	0.57
1:B:456:GLN:N	1:B:456:GLN:NE2	2.40	0.57
1:A:297:ALA:C	1:A:298:ASN:HD22	2.08	0.57
1:A:479:TYR:CG	1:A:485:ARG:HD2	2.39	0.57
1:A:193:LEU:CD1	1:B:218:ARG:HH21	2.17	0.57
1:B:392:PRO:O	1:B:395:VAL:HG12	2.05	0.57
1:A:132:PHE:CE2	1:A:211:LEU:HB3	2.40	0.57
1:A:148:VAL:HG13	1:A:477:ILE:HD12	1.86	0.56
1:B:320:LEU:HD11	1:B:370:GLN:CB	2.31	0.56
1:A:371:GLN:NE2	1:A:400:ALA:H	2.03	0.56
1:C:197:ARG:NH1	1:C:198:ASP:HB2	2.20	0.56
1:B:225:ARG:HD2	1:B:279:GLY:CA	2.35	0.56
1:B:334:TYR:O	1:B:394:THR:HA	2.03	0.56
1:C:371:GLN:NE2	1:C:415:GLN:HE21	2.01	0.56
1:B:360:LYS:HE3	1:B:368:ARG:CZ	2.34	0.56
1:B:203:HIS:HB3	1:B:230:ASP:CB	2.36	0.56
1:C:219:ILE:HD12	1:C:219:ILE:C	2.26	0.56
1:B:192:ILE:HG12	1:B:202:SER:HB3	1.86	0.56
1:A:268:THR:OG1	1:A:297:ALA:HA	2.05	0.56
1:A:219:ILE:HD11	1:A:562:LEU:CD2	2.29	0.56
1:C:190:ASN:HD22	1:C:204:GLN:NE2	2.03	0.56
1:C:209:GLY:HA3	1:C:223:THR:HA	1.86	0.56
1:A:446:ALA:HB2	1:A:510:SER:HA	1.86	0.56

Continued on next page...

Continued from previous page...

Atom-1	Atom-2	Interatomic distance (Å)	Clash overlap (Å)
1:C:416:ARG:NH1	2:C:1572:DAN:H8	2.20	0.56
1:B:218:ARG:CG	1:B:218:ARG:HH11	2.18	0.56
1:B:388:LEU:HD12	1:B:389:THR:H	1.70	0.56
1:A:205:TYR:O	1:A:206:LEU:HD23	2.05	0.56
1:A:231:ASP:HA	1:B:216:THR:CG2	2.36	0.55
1:A:543:LEU:HD11	1:A:545:ILE:HG13	1.87	0.55
1:B:291:LEU:HG	1:B:292:PHE:CD1	2.41	0.55
1:B:418:SER:O	1:B:466:VAL:HA	2.06	0.55
1:B:191:VAL:O	1:B:202:SER:HB2	2.07	0.55
1:C:567:LYS:HB3	1:C:569:ASP:O	2.06	0.55
1:C:479:TYR:CD1	1:C:485:ARG:HD2	2.42	0.55
1:C:268:THR:N	1:C:298:ASN:HD21	1.94	0.55
1:B:270:MET:CE	1:B:300:PRO:HG3	2.37	0.55
1:A:548:ILE:HG22	1:A:549:SER:N	2.22	0.55
1:B:201:HIS:CG	1:B:202:SER:H	2.24	0.55
1:C:326:SER:O	1:C:329:VAL:HG22	2.07	0.55
1:A:549:SER:O	1:A:557:ARG:NH1	2.39	0.55
1:A:418:SER:HA	1:A:467:THR:O	2.07	0.55
1:B:140:LEU:HD13	1:B:540:THR:HG23	1.88	0.55
1:B:360:LYS:HB3	1:B:366:GLY:O	2.05	0.54
1:B:416:ARG:HH21	1:B:468:GLY:C	2.11	0.54
1:B:442:TYR:CE1	1:B:484:LEU:HB3	2.42	0.54
1:C:403:ARG:HD3	1:C:405:LEU:HD11	1.89	0.54
1:A:447:PHE:HE1	1:A:491:MET:HB3	1.70	0.54
1:B:466:VAL:HG12	1:B:466:VAL:O	2.07	0.54
1:A:298:ASN:N	1:A:298:ASN:HD22	2.05	0.54
1:B:413:LEU:HD23	1:B:438:LEU:CD1	2.37	0.54
1:B:446:ALA:HB1	1:B:511:ARG:HB2	1.90	0.54
1:A:392:PRO:O	1:A:395:VAL:HG13	2.07	0.54
1:A:345:PRO:O	1:A:346:ASP:O	2.25	0.54
1:B:233:GLN:NE2	1:B:253:LYS:NZ	2.56	0.54
1:A:298:ASN:N	1:A:298:ASN:ND2	2.55	0.54
1:A:516:ARG:HG2	1:A:516:ARG:HH11	1.73	0.54
1:C:261:ASP:OD1	1:C:264:SER:OG	2.26	0.54
1:C:307:PHE:CE1	1:C:378:VAL:HG21	2.43	0.54
1:A:257:THR:OG1	1:A:260:GLU:HG3	2.07	0.53
1:C:328:THR:HA	1:C:331:GLU:HB2	1.89	0.53
1:C:192:ILE:HD11	1:C:236:LYS:NZ	2.23	0.53
1:A:193:LEU:HD11	1:B:218:ARG:HH21	1.73	0.53
1:B:190:ASN:HA	1:B:204:GLN:NE2	2.24	0.53
1:C:354:MET:CE	1:C:354:MET:HA	2.39	0.53

Continued on next page...

Continued from previous page...

Atom-1	Atom-2	Interatomic distance (Å)	Clash overlap (Å)
1:B:324:SER:O	1:B:328:THR:HG23	2.08	0.53
1:A:234:ASN:HD22	1:A:254:VAL:HG23	1.73	0.53
1:B:199:HIS:CG	1:B:199:HIS:O	2.62	0.52
1:B:198:ASP:OD1	1:B:198:ASP:C	2.47	0.52
1:C:143:ASP:OD1	1:C:144:ASN:N	2.42	0.52
1:C:253:LYS:HD2	1:C:269:LEU:HD13	1.90	0.52
1:B:474:TYR:CD1	1:B:530:THR:HA	2.45	0.52
1:A:422:SER:OG	1:A:448:THR:HB	2.10	0.52
1:C:253:LYS:HE3	1:C:271:ALA:CB	2.40	0.52
1:B:453:ILE:HG13	1:B:496:GLN:CD	2.29	0.52
1:C:518:SER:C	1:C:520:SER:H	2.12	0.52
1:C:417:GLY:O	1:C:449:ARG:NH1	2.42	0.52
1:C:479:TYR:CE1	1:C:485:ARG:HD2	2.44	0.52
1:C:516:ARG:NH2	1:C:518:SER:O	2.43	0.52
1:C:504:ALA:HB2	1:C:514:ILE:HG22	1.90	0.52
1:A:454:PRO:HA	1:A:456:GLN:HE22	1.75	0.52
1:C:453:ILE:CG2	1:C:454:PRO:HA	2.38	0.52
1:B:391:PRO:CG	1:B:396:THR:HG21	2.40	0.52
1:C:144:ASN:CG	1:C:480:ARG:HG3	2.30	0.52
1:B:425:LEU:HD23	1:B:443:THR:HG22	1.92	0.52
1:B:551:THR:O	1:B:553:PHE:N	2.35	0.52
1:B:345:PRO:O	1:B:346:ASP:C	2.48	0.51
1:C:466:VAL:O	1:C:466:VAL:HG12	2.09	0.51
1:A:161:ASN:HD22	1:B:165:ALA:HB3	1.75	0.51
1:A:301:GLY:O	1:A:302:VAL:HG22	2.10	0.51
1:C:160:LEU:C	1:C:160:LEU:HD23	2.30	0.51
1:C:405:LEU:N	1:C:405:LEU:HD12	2.25	0.51
1:B:261:ASP:O	1:B:264:SER:OG	2.26	0.51
1:C:516:ARG:HG2	1:C:516:ARG:NH1	2.22	0.51
1:C:456:GLN:H	1:C:456:GLN:HE21	1.59	0.51
1:A:527:THR:HA	1:A:545:ILE:O	2.10	0.51
1:A:507:ASP:OD1	1:A:509:THR:N	2.33	0.51
1:A:152:TYR:HB2	1:A:153:PRO:HD2	1.93	0.51
1:A:453:ILE:HA	1:A:456:GLN:HE21	1.75	0.51
1:C:333:LYS:HD3	1:C:394:THR:CG2	2.41	0.51
1:B:547:GLU:O	1:B:548:ILE:HD13	2.11	0.50
1:B:479:TYR:HB2	1:B:481:ASN:OD1	2.11	0.50
1:B:231:ASP:O	1:B:232:THR:C	2.49	0.50
1:B:371:GLN:HE21	1:B:399:GLY:HA2	1.76	0.50
1:C:325:PRO:O	1:C:329:VAL:HG13	2.11	0.50
1:C:385:ASP:OD2	1:C:434:LYS:NZ	2.35	0.50

Continued on next page...

Continued from previous page...

Atom-1	Atom-2	Interatomic distance (Å)	Clash overlap (Å)
1:B:371:GLN:NE2	1:B:400:ALA:H	2.09	0.50
1:A:371:GLN:NE2	1:A:399:GLY:HA2	2.23	0.50
1:B:256:GLU:HG3	1:B:261:ASP:N	2.27	0.50
1:A:150:SER:O	1:A:568:ASN:ND2	2.44	0.50
1:A:532:PHE:CD1	1:A:532:PHE:N	2.78	0.50
1:B:307:PHE:CZ	1:B:310:GLY:HA2	2.46	0.50
1:C:206:LEU:HB2	1:C:227:ILE:CG1	2.42	0.49
1:C:218:ARG:HH11	1:C:218:ARG:HB3	1.76	0.49
1:C:190:ASN:HB2	1:C:204:GLN:NE2	2.23	0.49
1:A:156:PHE:CE1	1:A:561:LEU:HB3	2.47	0.49
1:A:152:TYR:CD2	1:A:513:ARG:HD2	2.46	0.49
1:A:499:LEU:HD23	1:A:523:LYS:HA	1.93	0.49
1:B:233:GLN:NE2	1:B:253:LYS:HZ2	2.11	0.49
1:B:555:GLU:HG2	1:B:556:PHE:CD2	2.47	0.49
1:A:273:GLY:HA2	1:A:283:GLU:HA	1.94	0.49
1:B:141:ILE:O	1:B:477:ILE:HA	2.12	0.49
1:B:268:THR:OG1	1:B:298:ASN:N	2.42	0.49
1:B:567:LYS:O	1:B:568:ASN:O	2.31	0.49
1:A:451:GLY:HA3	1:A:455:CYS:O	2.12	0.49
1:C:527:THR:HA	1:C:545:ILE:O	2.13	0.49
1:B:525:ALA:CB	1:B:547:GLU:OE1	2.61	0.49
1:A:269:LEU:HD22	1:A:270:MET:N	2.28	0.49
1:A:476:LEU:HG	1:A:477:ILE:HG13	1.94	0.49
1:B:374:LEU:HD12	1:B:375:SER:N	2.28	0.49
1:B:209:GLY:HA3	1:B:223:THR:HA	1.94	0.49
1:A:136:ILE:HD12	1:A:180:MET:HE3	1.95	0.49
1:B:297:ALA:C	1:B:298:ASN:HD22	2.16	0.49
1:B:235:ARG:HG3	1:B:235:ARG:HH11	1.77	0.48
1:C:144:ASN:HD21	1:C:480:ARG:HG3	1.78	0.48
1:A:295:TRP:N	1:A:295:TRP:CD1	2.80	0.48
1:A:523:LYS:HB3	1:A:549:SER:HB2	1.96	0.48
1:B:313:TRP:O	1:B:404:ILE:HG13	2.13	0.48
1:B:196:CYS:HB2	1:B:555:GLU:OE1	2.14	0.48
1:C:324:SER:O	1:C:325:PRO:C	2.50	0.48
1:B:309:ASP:O	1:B:311:ARG:N	2.47	0.48
1:B:501:PRO:HB2	1:B:517:VAL:CG2	2.42	0.48
1:A:548:ILE:HB	1:A:557:ARG:HD2	1.96	0.48
1:B:335:VAL:HG12	1:B:359:TYR:OH	2.13	0.48
1:A:227:ILE:HA	1:B:220:PHE:CE2	2.48	0.48
1:B:507:ASP:OD1	1:B:510:SER:N	2.47	0.48
1:B:453:ILE:CG2	1:B:454:PRO:HA	2.42	0.48

Continued on next page...

Continued from previous page...

Atom-1	Atom-2	Interatomic distance (Å)	Clash overlap (Å)
1:B:188:THR:HB	1:B:206:LEU:HD23	1.95	0.48
1:C:261:ASP:HA	1:C:264:SER:HB3	1.95	0.48
1:B:346:ASP:HB3	1:B:350:TYR:CD2	2.48	0.48
1:A:132:PHE:CE1	1:A:534:VAL:HG22	2.48	0.48
1:B:567:LYS:HG2	1:B:568:ASN:N	2.28	0.48
1:B:525:ALA:HB3	1:B:547:GLU:CB	2.44	0.48
1:A:175:ILE:N	1:A:175:ILE:HD13	2.28	0.48
1:B:360:LYS:HE3	1:B:368:ARG:NH1	2.28	0.48
1:A:432:SER:O	1:A:433:ASN:HB2	2.13	0.48
1:C:190:ASN:CB	1:C:204:GLN:HE22	2.26	0.48
1:B:374:LEU:HD12	1:B:375:SER:H	1.78	0.48
1:B:298:ASN:N	1:B:298:ASN:ND2	2.62	0.47
1:C:398:MET:CE	1:C:466:VAL:HG22	2.44	0.47
1:B:129:ASP:OD2	1:B:212:ARG:CB	2.62	0.47
1:A:325:PRO:O	1:A:329:VAL:HG13	2.15	0.47
1:B:534:VAL:HG12	1:B:537:THR:H	1.79	0.47
1:C:354:MET:HA	1:C:354:MET:HE1	1.95	0.47
1:B:148:VAL:HG13	1:B:477:ILE:HD12	1.97	0.47
1:A:190:ASN:HB2	1:A:204:GLN:HE22	1.80	0.47
1:B:465:CYS:O	1:B:466:VAL:HG23	2.14	0.47
1:C:308:ILE:HG21	1:C:431:VAL:HG11	1.96	0.47
1:B:150:SER:HB2	1:B:567:LYS:HZ3	1.80	0.47
1:B:128:HIS:HA	1:B:210:VAL:HB	1.97	0.47
1:C:488:PHE:CG	1:C:489:GLY:N	2.83	0.47
1:C:301:GLY:O	1:C:302:VAL:HG22	2.14	0.47
1:B:449:ARG:NH1	1:B:451:GLY:HA3	2.28	0.47
1:B:320:LEU:HD21	1:B:370:GLN:CB	2.34	0.47
1:B:467:THR:CG2	1:B:468:GLY:H	2.24	0.47
1:A:442:TYR:CE1	1:A:484:LEU:HB3	2.50	0.47
1:A:156:PHE:HZ	1:A:503:SER:HG	1.62	0.47
1:B:526:TYR:N	1:B:547:GLU:OE1	2.45	0.47
1:C:266:VAL:HB	1:C:267:PRO:HD2	1.97	0.47
1:C:313:TRP:CH2	1:C:431:VAL:CG2	2.98	0.47
1:B:272:HIS:ND1	1:B:383:GLY:N	2.62	0.47
1:A:250:LEU:HG	1:A:300:PRO:HG3	1.96	0.47
1:B:268:THR:OG1	1:B:297:ALA:HA	2.15	0.47
1:B:190:ASN:HD22	1:B:204:GLN:HE21	1.61	0.47
1:C:141:ILE:O	1:C:477:ILE:HG23	2.15	0.47
1:B:132:PHE:CE2	1:B:211:LEU:HB3	2.50	0.47
1:C:320:LEU:HD12	1:C:368:ARG:HD2	1.97	0.47
1:B:173:THR:HA	1:B:190:ASN:O	2.15	0.47

Continued on next page...

Continued from previous page...

Atom-1	Atom-2	Interatomic distance (Å)	Clash overlap (Å)
1:C:431:VAL:HG13	1:C:431:VAL:O	2.14	0.47
1:A:161:ASN:ND2	1:B:165:ALA:HB3	2.30	0.47
1:C:498:ARG:HB3	1:C:524:ALA:O	2.14	0.47
1:A:158:GLU:HG2	1:B:193:LEU:HD23	1.96	0.47
1:C:392:PRO:HG2	1:C:395:VAL:HG12	1.96	0.46
1:C:450:PRO:HD3	1:C:492:LEU:O	2.15	0.46
1:C:333:LYS:HD3	1:C:394:THR:HG23	1.96	0.46
1:A:359:TYR:O	1:A:368:ARG:HA	2.15	0.46
1:A:181:SER:HB3	1:A:242:ALA:HB3	1.98	0.46
1:B:391:PRO:HG2	1:B:396:THR:HG21	1.97	0.46
1:A:514:ILE:HG13	1:A:514:ILE:O	2.15	0.46
1:A:234:ASN:HD22	1:A:254:VAL:CG2	2.28	0.46
1:C:549:SER:O	1:C:557:ARG:NH1	2.48	0.46
1:A:352:ILE:O	1:A:356:LYS:HG2	2.16	0.46
1:A:453:ILE:H	1:A:496:GLN:HE21	1.62	0.46
1:A:143:ASP:CG	1:A:146:SER:HB2	2.36	0.46
1:A:428:PRO:HB2	1:A:439:HIS:HB2	1.97	0.46
1:B:189:HIS:CD2	1:B:205:TYR:HB3	2.51	0.46
1:B:344:CYS:HB2	1:B:460:ARG:O	2.15	0.46
1:C:190:ASN:HA	1:C:204:GLN:NE2	2.31	0.46
1:A:348:GLN:O	1:A:352:ILE:HG13	2.16	0.46
1:C:190:ASN:CB	1:C:204:GLN:NE2	2.79	0.46
1:B:478:PHE:N	1:B:478:PHE:CD1	2.83	0.46
1:C:152:TYR:CD1	1:C:152:TYR:N	2.84	0.46
1:B:317:TYR:CD2	1:B:400:ALA:HA	2.51	0.46
1:C:265:ALA:O	1:C:321:LYS:HE2	2.16	0.46
1:B:479:TYR:CE1	1:B:485:ARG:HD2	2.51	0.46
3:A:1571:SIA:H111	1:B:169:GLY:N	2.31	0.46
1:A:471:THR:HG21	1:A:492:LEU:HD13	1.98	0.46
1:B:219:ILE:HG13	1:B:219:ILE:O	2.14	0.46
3:A:1571:SIA:H111	1:B:169:GLY:H	1.81	0.45
1:A:131:ASP:O	1:A:535:VAL:HG22	2.16	0.45
1:B:516:ARG:HG2	1:B:516:ARG:NH1	2.31	0.45
1:C:308:ILE:HB	1:C:313:TRP:NE1	2.32	0.45
1:C:488:PHE:CD2	1:C:489:GLY:N	2.84	0.45
1:A:535:VAL:HG23	1:A:536:LYS:N	2.31	0.45
1:A:261:ASP:OD1	1:A:264:SER:OG	2.28	0.45
1:C:328:THR:HG22	1:C:331:GLU:OE1	2.17	0.45
1:B:147:ASP:O	1:B:148:VAL:C	2.54	0.45
1:C:140:LEU:CD2	1:C:533:LYS:HB2	2.47	0.45
1:C:174:ARG:C	1:C:175:ILE:HG12	2.36	0.45

Continued on next page...

Continued from previous page...

Atom-1	Atom-2	Interatomic distance (Å)	Clash overlap (Å)
1:A:501:PRO:HB2	1:A:517:VAL:HG23	1.98	0.45
1:A:196:CYS:HB2	1:A:555:GLU:OE1	2.17	0.45
1:A:174:ARG:C	1:A:175:ILE:HG12	2.37	0.45
1:B:296:VAL:CG2	1:B:319:GLY:HA3	2.46	0.45
1:A:268:THR:N	1:A:298:ASN:HD21	2.08	0.45
1:B:212:ARG:HG3	1:B:220:PHE:CE2	2.52	0.45
1:A:516:ARG:HG2	1:A:516:ARG:NH1	2.32	0.45
1:B:269:LEU:HD11	1:B:285:ASP:OD2	2.17	0.45
1:C:453:ILE:HG13	1:C:496:GLN:NE2	2.32	0.45
1:C:414:TYR:CD2	1:C:472:ASP:HB3	2.52	0.45
1:B:461:CYS:HA	1:B:462:PRO:HD3	1.87	0.45
1:B:488:PHE:CG	1:B:489:GLY:N	2.85	0.45
1:B:274:ARG:HB3	1:B:382:LEU:HD21	1.98	0.45
1:B:295:TRP:O	1:B:321:LYS:HE2	2.16	0.45
1:B:159:HIS:H	1:B:159:HIS:CD2	2.35	0.45
1:B:371:GLN:HE21	1:B:415:GLN:HE21	1.63	0.45
1:C:313:TRP:CH2	1:C:431:VAL:HG23	2.51	0.45
1:B:493:ASP:O	1:B:494:SER:HB2	2.16	0.45
1:B:363:ARG:HD3	1:B:466:VAL:HG11	1.99	0.45
1:A:334:TYR:CD1	1:A:356:LYS:HD3	2.51	0.45
1:A:473:PRO:HB2	1:A:487:VAL:HG21	1.99	0.45
1:C:133:ILE:HD13	1:C:133:ILE:N	2.32	0.45
1:B:145:ALA:O	1:B:146:SER:O	2.34	0.45
1:C:467:THR:OG1	1:C:468:GLY:N	2.48	0.45
1:B:268:THR:N	1:B:298:ASN:ND2	2.48	0.44
1:B:313:TRP:CD1	1:B:313:TRP:N	2.84	0.44
1:C:264:SER:O	1:C:266:VAL:O	2.35	0.44
1:C:313:TRP:CD1	1:C:313:TRP:N	2.84	0.44
1:A:531:CYS:HA	1:A:542:CYS:HA	1.98	0.44
1:A:538:ASN:CG	1:A:538:ASN:O	2.56	0.44
1:B:316:VAL:CG2	1:B:317:TYR:N	2.80	0.44
1:B:334:TYR:CD1	1:B:356:LYS:HE3	2.52	0.44
1:B:139:GLU:HG2	1:B:478:PHE:CZ	2.52	0.44
1:C:177:SER:HB3	1:C:188:THR:HG22	1.98	0.44
1:A:203:HIS:HB2	1:A:229:LEU:O	2.17	0.44
1:C:152:TYR:HE1	1:C:567:LYS:C	2.20	0.44
1:C:470:TYR:O	1:C:526:TYR:HA	2.17	0.44
1:B:180:MET:HA	1:B:185:TYR:HA	1.98	0.44
1:A:426:LEU:HD23	1:A:426:LEU:HA	1.85	0.44
1:B:175:ILE:HD13	1:B:175:ILE:N	2.32	0.44
1:C:442:TYR:CE1	1:C:484:LEU:HB3	2.53	0.44

Continued on next page...

Continued from previous page...

Atom-1	Atom-2	Interatomic distance (Å)	Clash overlap (Å)
1:B:561:LEU:HD23	1:B:561:LEU:N	2.32	0.44
1:A:153:PRO:HD3	1:A:504:ALA:HA	2.00	0.44
1:B:542:CYS:SG	1:B:565:ILE:HD11	2.58	0.44
1:A:472:ASP:OD1	1:A:528:THR:HA	2.17	0.44
1:B:421:PHE:CE2	1:B:423:PRO:HB2	2.52	0.44
1:B:451:GLY:O	1:B:456:GLN:HA	2.18	0.44
1:A:491:MET:CE	1:A:493:ASP:HA	2.47	0.44
1:A:301:GLY:O	1:A:302:VAL:HG13	2.17	0.44
1:C:307:PHE:HE1	1:C:378:VAL:HG21	1.80	0.44
3:C:1570:SIA:O6	4:C:1571:WIA:H5	2.18	0.44
1:B:320:LEU:CD2	1:B:370:GLN:HB3	2.36	0.44
1:B:203:HIS:H	1:B:203:HIS:CD2	2.35	0.44
1:B:404:ILE:HG23	1:B:429:MET:CE	2.48	0.44
1:A:136:ILE:HG23	1:A:180:MET:HE2	2.00	0.44
1:A:304:GLY:O	1:A:403:ARG:HG3	2.18	0.44
1:A:140:LEU:HD13	1:A:540:THR:CG2	2.48	0.44
1:A:140:LEU:HD13	1:A:540:THR:HG23	2.00	0.44
1:B:320:LEU:N	1:B:320:LEU:HD23	2.33	0.43
1:B:529:SER:HA	1:B:543:LEU:O	2.18	0.43
1:B:413:LEU:CD2	1:B:438:LEU:HD11	2.48	0.43
1:C:209:GLY:CA	1:C:223:THR:HA	2.48	0.43
1:C:253:LYS:HB2	1:C:269:LEU:HB3	2.00	0.43
1:A:148:VAL:HB	1:A:507:ASP:HB3	2.00	0.43
1:A:213:THR:HA	1:A:218:ARG:O	2.19	0.43
1:A:438:LEU:HD23	1:A:438:LEU:HA	1.86	0.43
1:C:264:SER:O	1:C:265:ALA:C	2.56	0.43
1:C:531:CYS:HA	1:C:542:CYS:HA	2.00	0.43
1:B:516:ARG:NE	1:B:519:SER:HA	2.33	0.43
1:B:250:LEU:HD21	1:B:374:LEU:HD23	1.99	0.43
1:A:163:ILE:HA	1:A:164:PRO:HD3	1.86	0.43
1:A:543:LEU:HD12	1:A:544:SER:N	2.33	0.43
1:A:234:ASN:ND2	1:A:254:VAL:CG2	2.81	0.43
1:A:264:SER:OG	1:A:264:SER:O	2.36	0.43
1:B:160:LEU:C	1:B:160:LEU:HD23	2.38	0.43
1:B:262:TYR:O	1:B:367:LYS:NZ	2.50	0.43
1:A:130:PRO:HA	1:A:133:ILE:HG12	2.00	0.43
1:C:206:LEU:HD12	1:C:227:ILE:HD11	1.99	0.43
1:B:474:TYR:HA	1:B:475:PRO:HD3	1.92	0.43
1:A:209:GLY:HA3	1:A:223:THR:HA	2.00	0.43
1:A:189:HIS:CD2	1:A:189:HIS:C	2.92	0.43
1:B:264:SER:O	1:B:264:SER:OG	2.37	0.43

Continued on next page...

Continued from previous page...

Atom-1	Atom-2	Interatomic distance (Å)	Clash overlap (Å)
1:B:470:TYR:HB3	1:B:526:TYR:CD1	2.53	0.43
1:B:488:PHE:HE2	1:B:544:SER:HG	1.64	0.43
1:B:282:HIS:O	1:B:382:LEU:HD13	2.18	0.43
1:A:167:THR:OG1	1:B:158:GLU:HA	2.18	0.43
1:C:163:ILE:HA	1:C:164:PRO:HD3	1.81	0.43
1:C:183:THR:OG1	1:C:184:HIS:ND1	2.43	0.43
1:B:152:TYR:CD1	1:B:152:TYR:N	2.87	0.43
1:A:180:MET:HA	1:A:185:TYR:HA	2.01	0.43
1:A:173:THR:HG22	1:A:191:VAL:HG22	2.00	0.43
1:A:423:PRO:HB3	1:A:445:ASN:HA	2.01	0.43
1:B:322:PRO:O	1:B:323:ASN:HB2	2.18	0.43
1:B:254:VAL:HG11	1:B:299:TYR:HE2	1.84	0.43
1:B:201:HIS:CG	1:B:202:SER:N	2.86	0.43
1:C:130:PRO:C	1:C:132:PHE:H	2.21	0.43
1:B:131:ASP:OD2	1:B:536:LYS:HG2	2.18	0.43
1:A:165:ALA:O	1:B:161:ASN:HB2	2.19	0.43
1:B:413:LEU:HD12	1:B:414:TYR:N	2.34	0.42
1:B:309:ASP:C	1:B:311:ARG:H	2.23	0.42
1:C:550:ASN:OD1	1:C:557:ARG:CZ	2.67	0.42
1:C:235:ARG:HG3	1:C:235:ARG:NH1	2.33	0.42
1:B:357:SER:C	1:B:359:TYR:H	2.20	0.42
1:B:197:ARG:CD	1:B:197:ARG:H	2.25	0.42
1:B:199:HIS:CE1	1:B:257:THR:HA	2.55	0.42
1:B:139:GLU:HG2	1:B:478:PHE:CE2	2.54	0.42
1:C:177:SER:HB3	1:C:188:THR:CG2	2.49	0.42
1:A:552:LEU:HB2	1:B:557:ARG:HH12	1.85	0.42
1:C:148:VAL:HG13	1:C:477:ILE:HD12	2.01	0.42
1:A:404:ILE:HD12	1:A:429:MET:SD	2.60	0.42
1:A:353:ARG:O	1:A:356:LYS:HB2	2.20	0.42
1:A:444:PHE:CZ	1:A:487:VAL:HG13	2.53	0.42
1:C:180:MET:HA	1:C:185:TYR:HA	2.01	0.42
1:B:345:PRO:HG2	1:B:460:ARG:NH2	2.34	0.42
1:C:327:ASP:OD1	1:C:368:ARG:NE	2.45	0.42
1:C:550:ASN:OD1	1:C:557:ARG:NE	2.52	0.42
1:A:165:ALA:H	1:B:161:ASN:HB3	1.85	0.42
1:B:290:THR:O	1:B:293:GLU:HB2	2.20	0.42
1:A:135:GLY:HA3	1:A:533:LYS:O	2.20	0.42
1:A:337:TYR:HB3	1:A:421:PHE:CE1	2.55	0.42
1:B:444:PHE:N	1:B:444:PHE:CD1	2.88	0.42
1:C:371:GLN:HE21	1:C:415:GLN:NE2	2.05	0.42
1:C:176:PRO:HB3	1:C:558:ILE:HD13	2.02	0.42

Continued on next page...

Continued from previous page...

Atom-1	Atom-2	Interatomic distance (Å)	Clash overlap (Å)
1:C:298:ASN:ND2	1:C:298:ASN:N	2.68	0.42
1:C:130:PRO:C	1:C:132:PHE:N	2.72	0.42
1:B:235:ARG:NH1	1:B:235:ARG:HG3	2.35	0.42
1:B:308:ILE:HD13	1:B:411:HIS:CE1	2.55	0.42
1:A:151:PHE:HA	1:A:566:LEU:O	2.20	0.42
1:A:220:PHE:CE2	1:B:227:ILE:HA	2.55	0.42
1:B:525:ALA:HB1	1:B:547:GLU:OE1	2.20	0.42
1:B:548:ILE:HG22	1:B:549:SER:N	2.35	0.42
1:C:481:ASN:O	1:C:482:HIS:CB	2.67	0.42
1:B:443:THR:O	1:B:508:SER:HA	2.20	0.42
1:A:207:ALA:HA	1:A:225:ARG:O	2.20	0.42
1:A:161:ASN:HB2	1:B:165:ALA:O	2.20	0.42
1:B:273:GLY:HA3	1:B:281:TYR:OH	2.19	0.42
1:C:360:LYS:CE	1:C:368:ARG:NH2	2.83	0.41
1:B:169:GLY:HA2	1:B:552:LEU:O	2.20	0.41
1:A:452:SER:O	1:A:453:ILE:C	2.57	0.41
1:C:254:VAL:HG23	1:C:254:VAL:O	2.19	0.41
1:B:396:THR:HG22	1:B:438:LEU:HD12	2.02	0.41
1:C:361:PRO:HG3	1:C:466:VAL:CG2	2.50	0.41
1:A:145:ALA:O	1:A:146:SER:C	2.58	0.41
1:A:264:SER:O	1:A:265:ALA:C	2.59	0.41
1:C:348:GLN:O	1:C:352:ILE:HG13	2.19	0.41
1:C:175:ILE:HD13	1:C:175:ILE:N	2.35	0.41
1:C:235:ARG:HG3	1:C:235:ARG:HH11	1.86	0.41
1:C:272:HIS:ND1	1:C:383:GLY:N	2.63	0.41
1:A:188:THR:CG2	1:A:240:VAL:HG13	2.50	0.41
1:A:550:ASN:ND2	1:A:553:PHE:O	2.53	0.41
1:A:370:GLN:HE21	1:A:371:GLN:H	1.65	0.41
1:C:406:THR:HG23	1:C:411:HIS:CE1	2.56	0.41
1:A:543:LEU:HD11	1:A:545:ILE:CG1	2.50	0.41
1:B:361:PRO:HG3	1:B:466:VAL:CG2	2.50	0.41
1:B:159:HIS:HD2	1:B:159:HIS:H	1.67	0.41
1:B:537:THR:O	1:B:538:ASN:C	2.58	0.41
1:A:160:LEU:HD12	1:A:220:PHE:HD2	1.85	0.41
1:B:523:LYS:HE2	1:B:556:PHE:CZ	2.56	0.41
1:A:335:VAL:HG23	1:A:394:THR:O	2.20	0.41
1:B:307:PHE:CE1	1:B:378:VAL:HG21	2.55	0.41
1:B:432:SER:O	1:B:433:ASN:HB2	2.20	0.41
1:B:201:HIS:O	1:B:202:SER:CB	2.67	0.41
1:A:169:GLY:HA2	1:A:552:LEU:O	2.21	0.41
1:B:389:THR:O	1:B:391:PRO:HD3	2.19	0.41

Continued on next page...

Continued from previous page...

Atom-1	Atom-2	Interatomic distance (Å)	Clash overlap (Å)
1:A:484:LEU:HD12	1:A:485:ARG:N	2.34	0.41
1:A:216:THR:HG23	1:B:231:ASP:HA	2.02	0.41
1:A:413:LEU:HD22	1:A:438:LEU:HD11	2.02	0.41
1:A:198:ASP:OD1	1:A:200:SER:N	2.48	0.41
1:A:148:VAL:CG1	1:A:486:GLY:HA3	2.50	0.41
1:C:187:TYR:CG	1:C:188:THR:N	2.89	0.41
1:C:247:CYS:O	1:C:274:ARG:HA	2.21	0.41
1:B:550:ASN:OD1	1:B:557:ARG:NH2	2.53	0.41
1:B:264:SER:O	1:B:265:ALA:C	2.57	0.41
1:A:371:GLN:NE2	1:A:415:GLN:HE21	2.18	0.41
1:C:219:ILE:HG21	1:C:534:VAL:HG21	2.02	0.41
1:B:475:PRO:HB3	1:B:484:LEU:HD13	2.02	0.41
1:B:501:PRO:HG3	1:B:524:ALA:CB	2.50	0.41
1:C:421:PHE:CE1	1:C:423:PRO:HD2	2.56	0.41
1:C:362:GLY:O	1:C:363:ARG:C	2.60	0.41
1:B:280:GLN:HA	1:B:280:GLN:HE21	1.86	0.41
1:C:543:LEU:HD12	1:C:544:SER:N	2.36	0.41
1:B:525:ALA:HB3	1:B:547:GLU:OE1	2.21	0.41
1:C:269:LEU:HD22	1:C:270:MET:N	2.36	0.41
1:A:158:GLU:HB3	1:B:193:LEU:HD22	2.03	0.41
1:C:344:CYS:HA	1:C:345:PRO:HD3	1.79	0.41
1:B:297:ALA:O	1:B:318:GLY:HA3	2.21	0.40
1:B:261:ASP:HA	1:B:264:SER:HB3	2.03	0.40
1:A:513:ARG:HG2	1:A:514:ILE:N	2.36	0.40
1:C:526:TYR:N	1:C:526:TYR:CD1	2.89	0.40
1:A:470:TYR:HE1	1:A:528:THR:HB	1.86	0.40
1:C:336:ILE:HA	1:C:420:TYR:OH	2.21	0.40
1:A:126:PRO:HB3	1:A:224:LEU:CD1	2.51	0.40
1:B:397:LEU:HA	1:B:397:LEU:HD12	1.91	0.40
1:B:449:ARG:HG2	1:B:450:PRO:O	2.21	0.40
1:B:416:ARG:NH2	1:B:468:GLY:O	2.54	0.40
1:B:568:ASN:HB3	1:B:569:ASP:H	1.51	0.40
1:B:364:PHE:HD2	1:B:369:ILE:HD11	1.87	0.40
1:C:537:THR:O	1:C:538:ASN:C	2.58	0.40
1:A:256:GLU:HG3	1:A:261:ASP:HB2	2.03	0.40
1:A:444:PHE:CE2	1:A:487:VAL:HG13	2.56	0.40
1:A:449:ARG:HD3	1:A:449:ARG:O	2.21	0.40
1:A:299:TYR:CD1	1:A:299:TYR:N	2.89	0.40
1:C:516:ARG:CG	1:C:516:ARG:NH1	2.83	0.40
1:C:449:ARG:HG2	1:C:449:ARG:O	2.21	0.40
1:A:152:TYR:N	1:A:152:TYR:CD1	2.89	0.40

Continued on next page...

Continued from previous page...

Atom-1	Atom-2	Interatomic distance (Å)	Clash overlap (Å)
1:B:342:ASP:OD2	1:B:460:ARG:HD3	2.22	0.40
1:C:214:THR:HG23	1:C:218:ARG:O	2.22	0.40
1:B:151:PHE:CD1	1:B:567:LYS:HB2	2.56	0.40
1:A:185:TYR:C	1:A:185:TYR:CD1	2.95	0.40
1:B:136:ILE:HG21	1:B:181:SER:O	2.22	0.40
1:A:313:TRP:CD1	1:A:313:TRP:N	2.89	0.40

There are no symmetry-related clashes.

5.3 Torsion angles [i](#)

5.3.1 Protein backbone [i](#)

In the following table, the Percentiles column shows the percent Ramachandran outliers of the chain as a percentile score with respect to all X-ray entries followed by that with respect to entries of similar resolution.

The Analysed column shows the number of residues for which the backbone conformation was analysed, and the total number of residues.

Mol	Chain	Analysed	Favoured	Allowed	Outliers	Percentiles	
1	A	445/454 (98%)	391 (88%)	39 (9%)	15 (3%)	5	10
1	B	445/454 (98%)	376 (84%)	52 (12%)	17 (4%)	4	9
1	C	445/454 (98%)	394 (88%)	47 (11%)	4 (1%)	21	49
All	All	1335/1362 (98%)	1161 (87%)	138 (10%)	36 (3%)	6	16

All (36) Ramachandran outliers are listed below:

Mol	Chain	Res	Type
1	A	200	SER
1	A	302	VAL
1	A	346	ASP
1	B	146	SER
1	B	552	LEU
1	B	568	ASN
1	C	200	SER
1	A	304	GLY
1	A	342	ASP
1	A	393	ASN
1	A	473	PRO

Continued on next page...

Continued from previous page...

Mol	Chain	Res	Type
1	B	148	VAL
1	B	202	SER
1	B	346	ASP
1	B	347	GLU
1	B	466	VAL
1	B	494	SER
1	A	345	PRO
1	A	504	ALA
1	A	536	LYS
1	B	145	ALA
1	B	232	THR
1	B	310	GLY
1	B	456	GLN
1	A	525	ALA
1	B	302	VAL
1	B	345	PRO
1	B	366	GLY
1	A	433	ASN
1	A	500	ASN
1	B	200	SER
1	C	473	PRO
1	A	459	ALA
1	A	475	PRO
1	C	302	VAL
1	C	325	PRO

5.3.2 Protein sidechains ⓘ

In the following table, the Percentiles column shows the percent sidechain outliers of the chain as a percentile score with respect to all X-ray entries followed by that with respect to entries of similar resolution.

The Analysed column shows the number of residues for which the sidechain conformation was analysed, and the total number of residues.

Mol	Chain	Analysed	Rotameric	Outliers	Percentiles	
1	A	387/392 (99%)	353 (91%)	34 (9%)	12	28
1	B	387/392 (99%)	356 (92%)	31 (8%)	15	33
1	C	387/392 (99%)	365 (94%)	22 (6%)	25	53
All	All	1161/1176 (99%)	1074 (92%)	87 (8%)	17	38

All (87) residues with a non-rotameric sidechain are listed below:

Mol	Chain	Res	Type
1	A	131	ASP
1	A	143	ASP
1	A	149	THR
1	A	159	HIS
1	A	170	SER
1	A	189	HIS
1	A	197	ARG
1	A	206	LEU
1	A	218	ARG
1	A	223	THR
1	A	266	VAL
1	A	269	LEU
1	A	298	ASN
1	A	302	VAL
1	A	315	SER
1	A	316	VAL
1	A	335	VAL
1	A	342	ASP
1	A	381	SER
1	A	395	VAL
1	A	396	THR
1	A	397	LEU
1	A	447	PHE
1	A	449	ARG
1	A	454	PRO
1	A	456	GLN
1	A	464	SER
1	A	473	PRO
1	A	500	ASN
1	A	518	SER
1	A	532	PHE
1	A	543	LEU
1	A	557	ARG
1	A	559	VAL
1	B	131	ASP
1	B	143	ASP
1	B	149	THR
1	B	152	TYR
1	B	159	HIS
1	B	189	HIS
1	B	190	ASN
1	B	197	ARG

Continued on next page...

Continued from previous page...

Mol	Chain	Res	Type
1	B	198	ASP
1	B	203	HIS
1	B	212	ARG
1	B	248	ASP
1	B	255	THR
1	B	266	VAL
1	B	285	ASP
1	B	298	ASN
1	B	317	TYR
1	B	320	LEU
1	B	342	ASP
1	B	346	ASP
1	B	380	THR
1	B	419	SER
1	B	445	ASN
1	B	447	PHE
1	B	449	ARG
1	B	456	GLN
1	B	471	THR
1	B	478	PHE
1	B	527	THR
1	B	544	SER
1	B	557	ARG
1	C	189	HIS
1	C	197	ARG
1	C	198	ASP
1	C	218	ARG
1	C	248	ASP
1	C	269	LEU
1	C	298	ASN
1	C	302	VAL
1	C	325	PRO
1	C	341	ASN
1	C	342	ASP
1	C	381	SER
1	C	395	VAL
1	C	396	THR
1	C	397	LEU
1	C	433	ASN
1	C	447	PHE
1	C	449	ARG
1	C	456	GLN

Continued on next page...

Continued from previous page...

Mol	Chain	Res	Type
1	C	463	ASN
1	C	535	VAL
1	C	557	ARG

Some sidechains can be flipped to improve hydrogen bonding and reduce clashes. All (26) such sidechains are listed below:

Mol	Chain	Res	Type
1	A	157	GLN
1	A	204	GLN
1	A	263	ASN
1	A	298	ASN
1	A	370	GLN
1	A	371	GLN
1	A	393	ASN
1	A	433	ASN
1	A	456	GLN
1	A	496	GLN
1	A	568	ASN
1	B	199	HIS
1	B	204	GLN
1	B	233	GLN
1	B	280	GLN
1	B	298	ASN
1	B	371	GLN
1	B	456	GLN
1	B	463	ASN
1	B	496	GLN
1	C	204	GLN
1	C	298	ASN
1	C	371	GLN
1	C	456	GLN
1	C	463	ASN
1	C	496	GLN

5.3.3 RNA ⓘ

There are no RNA molecules in this entry.

5.4 Non-standard residues in protein, DNA, RNA chains ⓘ

There are no non-standard protein/DNA/RNA residues in this entry.

5.5 Carbohydrates ⓘ

There are no carbohydrates in this entry.

5.6 Ligand geometry ⓘ

9 ligands are modelled in this entry.

In the following table, the Counts columns list the number of bonds (or angles) for which Mogul statistics could be retrieved, the number of bonds (or angles) that are observed in the model and the number of bonds (or angles) that are defined in the chemical component dictionary. The Link column lists molecule types, if any, to which the group is linked. The Z score for a bond length (or angle) is the number of standard deviations the observed value is removed from the expected value. A bond length (or angle) with $|Z| > 2$ is considered an outlier worth inspection. RMSZ is the root-mean-square of all Z scores of the bond lengths (or angles).

Mol	Type	Chain	Res	Link	Bond lengths			Bond angles		
					Counts	RMSZ	$\# Z > 2$	Counts	RMSZ	$\# Z > 2$
2	DAN	A	1570	-	16,20,20	1.67	1 (6%)	19,28,28	1.70	4 (21%)
3	SIA	A	1571	4	16,20,21	5.24	10 (62%)	18,28,31	2.44	8 (44%)
4	WIA	A	1572	3	10,13,13	2.09	3 (30%)	13,18,18	1.69	1 (7%)
3	SIA	B	1570	4	16,20,21	5.46	10 (62%)	18,28,31	2.70	8 (44%)
4	WIA	B	1571	3	10,13,13	2.55	5 (50%)	13,18,18	1.18	1 (7%)
2	DAN	B	1572	-	16,20,20	1.46	3 (18%)	19,28,28	1.95	5 (26%)
3	SIA	C	1570	4	16,20,21	5.41	8 (50%)	18,28,31	2.56	9 (50%)
4	WIA	C	1571	3	10,13,13	1.81	3 (30%)	13,18,18	1.69	2 (15%)
2	DAN	C	1572	-	16,20,20	1.67	1 (6%)	19,28,28	1.70	4 (21%)

In the following table, the Chirals column lists the number of chiral outliers, the number of chiral centers analysed, the number of these observed in the model and the number defined in the chemical component dictionary. Similar counts are reported in the Torsion and Rings columns. '-' means no outliers of that kind were identified.

Mol	Type	Chain	Res	Link	Chirals	Torsions	Rings
2	DAN	A	1570	-	-	0/14/34/34	0/1/1/1
3	SIA	A	1571	4	-	0/14/34/38	0/1/1/1
4	WIA	A	1572	3	-	0/2/24/24	0/1/1/1
3	SIA	B	1570	4	-	0/14/34/38	0/1/1/1

Continued on next page...

Continued from previous page...

Mol	Type	Chain	Res	Link	Chirals	Torsions	Rings
4	WIA	B	1571	3	-	0/2/24/24	0/1/1/1
2	DAN	B	1572	-	-	0/14/34/34	0/1/1/1
3	SIA	C	1570	4	-	0/14/34/38	0/1/1/1
4	WIA	C	1571	3	-	0/2/24/24	0/1/1/1
2	DAN	C	1572	-	-	0/14/34/34	0/1/1/1

All (44) bond length outliers are listed below:

Mol	Chain	Res	Type	Atoms	Z	Observed(Å)	Ideal(Å)
3	B	1570	SIA	O8-C8	-15.51	1.08	1.43
3	A	1571	SIA	O8-C8	-15.07	1.09	1.43
3	C	1570	SIA	O8-C8	-14.81	1.10	1.43
3	B	1570	SIA	C11-C10	-12.27	1.25	1.50
3	C	1570	SIA	C11-C10	-12.22	1.26	1.50
3	A	1571	SIA	C11-C10	-11.41	1.27	1.50
3	A	1571	SIA	C5-N5	-5.84	1.36	1.45
3	C	1570	SIA	C5-N5	-5.62	1.36	1.45
3	B	1570	SIA	C5-N5	-4.30	1.38	1.45
3	B	1570	SIA	C7-C6	-3.58	1.48	1.52
2	B	1572	DAN	O6-C6	-2.65	1.41	1.46
3	A	1571	SIA	C7-C6	-2.24	1.50	1.52
3	C	1570	SIA	C7-C6	-2.14	1.50	1.52
3	A	1571	SIA	C9-C8	2.01	1.58	1.52
4	C	1571	WIA	O5-C5	2.05	1.47	1.43
3	A	1571	SIA	O10-C10	2.13	1.28	1.23
3	B	1570	SIA	C8-C7	2.16	1.57	1.53
4	B	1571	WIA	O3-C3	2.20	1.48	1.43
3	B	1570	SIA	C9-C8	2.20	1.58	1.52
4	C	1571	WIA	O5-C1	2.26	1.47	1.41
3	A	1571	SIA	C6-C5	2.29	1.56	1.53
4	B	1571	WIA	C4-C3	2.31	1.58	1.52
3	B	1570	SIA	C3-C4	2.33	1.56	1.52
4	A	1572	WIA	O5-C5	2.35	1.48	1.43
3	A	1571	SIA	C8-C7	2.53	1.58	1.53
3	A	1571	SIA	C3-C2	2.60	1.56	1.52
4	A	1572	WIA	O5-C1	2.75	1.48	1.41
2	B	1572	DAN	C3-C2	2.83	1.36	1.32
2	B	1572	DAN	O8-C8	2.92	1.49	1.43
3	B	1570	SIA	C6-C5	2.94	1.57	1.53
3	A	1571	SIA	O6-C6	3.11	1.49	1.43
3	C	1570	SIA	C6-C5	3.12	1.58	1.53
3	C	1570	SIA	C3-C2	3.23	1.58	1.52

Continued on next page...

Continued from previous page...

Mol	Chain	Res	Type	Atoms	Z	Observed(Å)	Ideal(Å)
4	C	1571	WIA	O1-C1	3.27	1.45	1.40
3	B	1570	SIA	C3-C2	3.29	1.58	1.52
4	B	1571	WIA	O5-C1	3.44	1.50	1.41
3	B	1570	SIA	O6-C6	3.56	1.49	1.43
4	B	1571	WIA	O5-C5	3.56	1.50	1.43
3	C	1570	SIA	C8-C7	3.64	1.60	1.53
4	A	1572	WIA	O1-C1	3.69	1.46	1.40
3	C	1570	SIA	O6-C6	3.82	1.50	1.43
4	B	1571	WIA	O1-C1	4.16	1.47	1.40
2	C	1572	DAN	C3-C2	5.31	1.40	1.32
2	A	1570	DAN	C3-C2	5.31	1.40	1.32

All (42) bond angle outliers are listed below:

Mol	Chain	Res	Type	Atoms	Z	Observed(°)	Ideal(°)
3	B	1570	SIA	C8-C7-C6	-4.98	102.99	113.01
2	B	1572	DAN	C4-C3-C2	-4.98	113.18	121.60
3	C	1570	SIA	C9-C8-C7	-4.98	100.79	112.48
3	A	1571	SIA	C9-C8-C7	-4.95	100.85	112.48
3	C	1570	SIA	O10-C10-C11	-4.46	113.89	122.06
3	B	1570	SIA	C9-C8-C7	-4.31	102.36	112.48
3	B	1570	SIA	O10-C10-C11	-4.24	114.28	122.06
2	C	1572	DAN	O4-C4-C3	-4.00	100.16	109.45
2	A	1570	DAN	O4-C4-C3	-4.00	100.17	109.45
3	A	1571	SIA	O10-C10-C11	-3.92	114.87	122.06
3	C	1570	SIA	O7-C7-C6	-3.34	101.72	109.43
3	A	1571	SIA	O7-C7-C6	-3.30	101.79	109.43
3	B	1570	SIA	O7-C7-C6	-3.29	101.83	109.43
3	A	1571	SIA	C8-C7-C6	-2.92	107.15	113.01
2	B	1572	DAN	C8-C7-C6	-2.89	107.19	113.01
3	C	1570	SIA	C8-C7-C6	-2.82	107.34	113.01
2	A	1570	DAN	C7-C6-C5	-2.74	110.17	114.32
2	C	1572	DAN	C7-C6-C5	-2.73	110.19	114.32
2	B	1572	DAN	C7-C6-C5	-2.32	110.80	114.32
2	C	1572	DAN	C4-C3-C2	-2.11	118.03	121.60
2	A	1570	DAN	C4-C3-C2	-2.09	118.06	121.60
4	C	1571	WIA	O5-C5-C4	2.13	111.20	109.13
3	C	1570	SIA	C6-C5-N5	2.24	114.97	111.07
3	C	1570	SIA	C5-N5-C10	2.59	129.74	123.10
2	B	1572	DAN	O6-C2-C3	2.65	127.96	124.12
3	A	1571	SIA	C5-N5-C10	2.66	129.92	123.10
3	A	1571	SIA	O10-C10-N5	2.87	127.72	121.86

Continued on next page...

Continued from previous page...

Mol	Chain	Res	Type	Atoms	Z	Observed(°)	Ideal(°)
3	B	1570	SIA	C5-N5-C10	2.91	130.57	123.10
3	B	1570	SIA	O10-C10-N5	2.92	127.81	121.86
3	C	1570	SIA	O8-C8-C9	2.93	116.06	109.22
3	C	1570	SIA	O10-C10-N5	3.22	128.42	121.86
3	A	1571	SIA	O8-C8-C9	3.22	116.72	109.22
3	B	1570	SIA	O8-C8-C9	3.25	116.81	109.22
4	B	1571	WIA	O1-C1-C2	3.42	112.24	108.21
3	A	1571	SIA	O7-C7-C8	3.72	118.12	108.75
2	B	1572	DAN	C6-O6-C2	3.84	120.73	114.79
3	C	1570	SIA	O7-C7-C8	3.94	118.67	108.75
2	C	1572	DAN	C6-O6-C2	4.02	121.02	114.79
2	A	1570	DAN	C6-O6-C2	4.04	121.04	114.79
3	B	1570	SIA	O7-C7-C8	4.57	120.27	108.75
4	C	1571	WIA	O1-C1-C2	5.11	114.24	108.21
4	A	1572	WIA	O1-C1-C2	5.54	114.75	108.21

There are no chirality outliers.

There are no torsion outliers.

There are no ring outliers.

5 monomers are involved in 5 short contacts:

Mol	Chain	Res	Type	Clashes	Symm-Clashes
3	A	1571	SIA	2	0
2	B	1572	DAN	1	0
3	C	1570	SIA	1	0
4	C	1571	WIA	1	0
2	C	1572	DAN	1	0

5.7 Other polymers [i](#)

There are no such residues in this entry.

5.8 Polymer linkage issues [i](#)

There are no chain breaks in this entry.

6 Fit of model and data ⓘ

6.1 Protein, DNA and RNA chains ⓘ

EDS was not executed - this section will therefore be empty.

6.2 Non-standard residues in protein, DNA, RNA chains ⓘ

EDS was not executed - this section will therefore be empty.

6.3 Carbohydrates ⓘ

EDS was not executed - this section will therefore be empty.

6.4 Ligands ⓘ

EDS was not executed - this section will therefore be empty.

6.5 Other polymers ⓘ

EDS was not executed - this section will therefore be empty.