



Full wwPDB X-ray Structure Validation Report ⓘ

Feb 1, 2016 – 05:47 AM GMT

PDB ID : 2UUK
Title : Thrombin-hirugen-gw420128 ternary complex at 1.39Å resolution
Authors : Ahmed, H.U.; Blakeley, M.P.; Cianci, M.; Cruickshank, D.W.J.; Hubbard, J.A.; Helliwell, J.R.
Deposited on : 2007-03-03
Resolution : 1.39 Å(reported)

This is a Full wwPDB X-ray Structure Validation Report for a publicly released PDB entry.
We welcome your comments at validation@mail.wwpdb.org
A user guide is available at
<http://wwpdb.org/validation/2016/XrayValidationReportHelp>
with specific help available everywhere you see the ⓘ symbol.

The following versions of software and data (see [references ⓘ](#)) were used in the production of this report:

MolProbity : 4.02b-467
Mogul : 1.7 (RC4), CSD as536be (2015)
Xtriage (Phenix) : 1.9-1692
EDS : rb-20026688
Percentile statistics : 20151230.v01 (using entries in the PDB archive December 30th 2015)
Refmac : 5.8.0135
CCP4 : 6.5.0
Ideal geometry (proteins) : Engh & Huber (2001)
Ideal geometry (DNA, RNA) : Parkinson et al. (1996)
Validation Pipeline (wwPDB-VP) : trunk26865

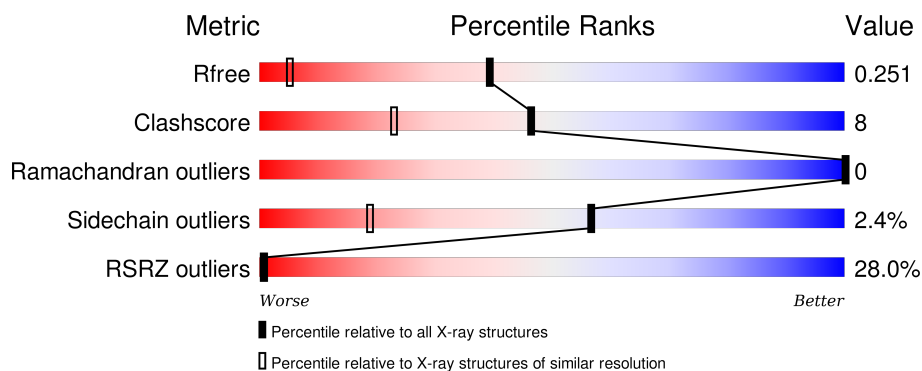
1 Overall quality at a glance ⓘ

The following experimental techniques were used to determine the structure:

X-RAY DIFFRACTION

The reported resolution of this entry is 1.39 Å.

Percentile scores (ranging between 0-100) for global validation metrics of the entry are shown in the following graphic. The table shows the number of entries on which the scores are based.



Metric	Whole archive (#Entries)	Similar resolution (#Entries, resolution range(Å))
R_{free}	91344	1199 (1.40-1.40)
Clashscore	102246	1295 (1.40-1.40)
Ramachandran outliers	100387	1259 (1.40-1.40)
Sidechain outliers	100360	1258 (1.40-1.40)
RSRZ outliers	91569	1198 (1.40-1.40)

The table below summarises the geometric issues observed across the polymeric chains and their fit to the electron density. The red, orange, yellow and green segments on the lower bar indicate the fraction of residues that contain outliers for ≥ 3 , 2, 1 and 0 types of geometric quality criteria. A grey segment represents the fraction of residues that are not modelled. The numeric value for each fraction is indicated below the corresponding segment, with a dot representing fractions $\leq 5\%$. The upper red bar (where present) indicates the fraction of residues that have poor fit to the electron density. The numeric value is given above the bar.

Mol	Chain	Length	Quality of chain
1	A	36	<div> <div>17%</div> <div>50%</div> <div>25%</div> <div>•</div> <div>22%</div> </div>
2	B	259	<div> <div>26%</div> <div>82%</div> <div>13%</div> <div>• • •</div> </div>
3	H	10	<div> <div>80%</div> <div>80%</div> <div>20%</div> </div>

2 Entry composition

There are 7 unique types of molecules in this entry. The entry contains 2795 atoms, of which 0 are hydrogens and 0 are deuteriums.

In the tables below, the ZeroOcc column contains the number of atoms modelled with zero occupancy, the AltConf column contains the number of residues with at least one atom in alternate conformation and the Trace column contains the number of residues modelled with at most 2 atoms.

- Molecule 1 is a protein called HUMAN ALPHA THROMBIN.

Mol	Chain	Residues	Atoms					ZeroOcc	AltConf	Trace
1	A	28	Total	C	N	O	S	0	3	0
			248	156	40	51	1			

- Molecule 2 is a protein called THROMBIN.

Mol	Chain	Residues	Atoms					ZeroOcc	AltConf	Trace
2	B	252	Total	C	N	O	S	0	9	0
			2073	1322	364	373	14			

- Molecule 3 is a protein called HIRUDIN I.

Mol	Chain	Residues	Atoms					ZeroOcc	AltConf	Trace
3	H	10	Total	C	N	O	S	0	0	0
			94	59	10	24	1			

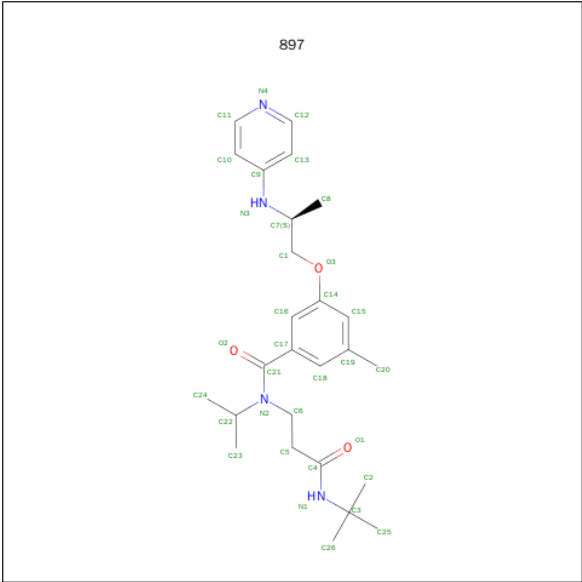
- Molecule 4 is SODIUM ION (three-letter code: NA) (formula: Na).

Mol	Chain	Residues	Atoms		ZeroOcc	AltConf
4	B	1	Total	Na	0	0
			1	1		

- Molecule 5 is CALCIUM ION (three-letter code: CA) (formula: Ca).

Mol	Chain	Residues	Atoms		ZeroOcc	AltConf
5	B	1	Total	Ca	0	0
			1	1		

- Molecule 6 is N-[3-(TERT-BUTYLAMINO)-3-OXOPROPYL]-N-ISOPROPYL-3-METHYL-5-[[[(2S)-2-(PYRIDIN-4-YLAMINO)PROPYL]OXY}BENZAMIDE (three-letter code: 897) (formula: C₂₆H₃₈N₄O₃).



Mol	Chain	Residues	Atoms				ZeroOcc	AltConf
6	B	1	Total	C	N	O	0	0
			33	26	4	3		

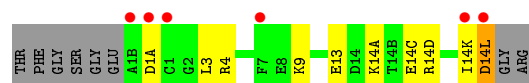
- Molecule 7 is water.

Mol	Chain	Residues	Atoms		ZeroOcc	AltConf
7	A	44	Total	O	0	0
			44	44		
7	B	294	Total	O	0	0
			294	294		
7	H	7	Total	O	0	0
			7	7		

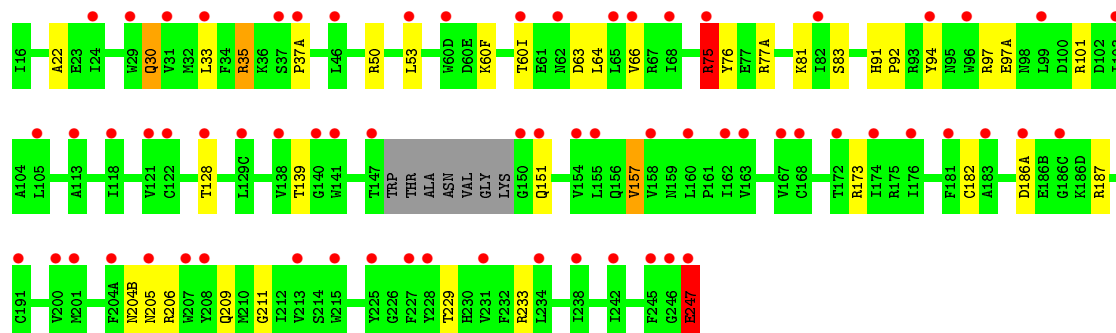
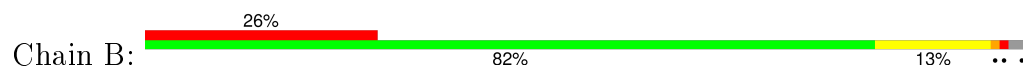
3 Residue-property plots [i](#)

These plots are drawn for all protein, RNA and DNA chains in the entry. The first graphic for a chain summarises the proportions of errors displayed in the second graphic. The second graphic shows the sequence view annotated by issues in geometry and electron density. Residues are color-coded according to the number of geometric quality criteria for which they contain at least one outlier: green = 0, yellow = 1, orange = 2 and red = 3 or more. A red dot above a residue indicates a poor fit to the electron density ($RSRZ > 2$). Stretches of 2 or more consecutive residues without any outlier are shown as a green connector. Residues present in the sample, but not in the model, are shown in grey.

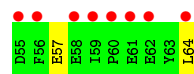
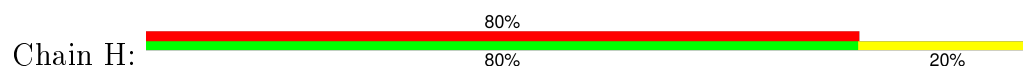
- Molecule 1: HUMAN ALPHA THROMBIN



- Molecule 2: THROMBIN



- Molecule 3: HIRUDIN I



4 Data and refinement statistics

Property	Value	Source
Space group	C 1 2 1	Depositor
Cell constants a, b, c, α , β , γ	70.35Å 71.44Å 72.12Å 90.00° 100.03° 90.00°	Depositor
Resolution (Å)	18.55 – 1.39 18.55 – 1.39	Depositor EDS
% Data completeness (in resolution range)	95.9 (18.55-1.39) 95.9 (18.55-1.39)	Depositor EDS
R_{merge}	0.07	Depositor
R_{sym}	(Not available)	Depositor
$\langle I/\sigma(I) \rangle$ ¹	2.22 (at 1.40Å)	Xtriage
Refinement program	SHELXL-97	Depositor
R, R_{free}	0.118 , 0.173 0.226 , 0.251	Depositor DCC
R_{free} test set	3345 reflections (5.25%)	DCC
Wilson B-factor (Å ²)	12.9	Xtriage
Anisotropy	0.070	Xtriage
Bulk solvent k_{sol} (e/Å ³), B_{sol} (Å ²)	0.41 , 63.2	EDS
Estimated twinning fraction	No twinning to report.	Xtriage
L-test for twinning ²	$\langle L \rangle = 0.49$, $\langle L^2 \rangle = 0.32$	Xtriage
Outliers	0 of 67018 reflections	Xtriage
F_o, F_c correlation	0.93	EDS
Total number of atoms	2795	wwPDB-VP
Average B, all atoms (Å ²)	23.0	wwPDB-VP

Xtriage's analysis on translational NCS is as follows: *The largest off-origin peak in the Patterson function is 7.73% of the height of the origin peak. No significant pseudotranslation is detected.*

¹Intensities estimated from amplitudes.

²Theoretical values of $\langle |L| \rangle$, $\langle L^2 \rangle$ for acentric reflections are 0.5, 0.375 respectively for untwinned datasets, and 0.333, 0.2 for perfectly twinned datasets.

5 Model quality

5.1 Standard geometry

Bond lengths and bond angles in the following residue types are not validated in this section: NA, CA, 897, TYS

The Z score for a bond length (or angle) is the number of standard deviations the observed value is removed from the expected value. A bond length (or angle) with $|Z| > 5$ is considered an outlier worth inspection. RMSZ is the root-mean-square of all Z scores of the bond lengths (or angles).

Mol	Chain	Bond lengths		Bond angles	
		RMSZ	$\# Z > 5$	RMSZ	$\# Z > 5$
1	A	0.78	0/259	1.57	3/343 (0.9%)
2	B	1.91	4/2155 (0.2%)	1.46	30/2912 (1.0%)
3	H	2.05	1/78 (1.3%)	1.35	0/103
All	All	1.83	5/2492 (0.2%)	1.47	33/3358 (1.0%)

Chiral center outliers are detected by calculating the chiral volume of a chiral center and verifying if the center is modelled as a planar moiety or with the opposite hand. A planarity outlier is detected by checking planarity of atoms in a peptide group, atoms in a mainchain group or atoms of a sidechain that are expected to be planar.

Mol	Chain	#Chirality outliers	#Planarity outliers
1	A	1	0

All (5) bond length outliers are listed below:

Mol	Chain	Res	Type	Atoms	Z	Observed(Å)	Ideal(Å)
2	B	247	GLU	C-O	82.54	2.80	1.23
3	H	64	LEU	C-O	17.62	1.56	1.23
2	B	157[A]	VAL	C-N	7.74	1.51	1.34
2	B	157[B]	VAL	C-N	7.74	1.51	1.34
2	B	128	THR	C-N	-5.47	1.21	1.34

All (33) bond angle outliers are listed below:

Mol	Chain	Res	Type	Atoms	Z	Observed(°)	Ideal(°)
2	B	75	ARG	NE-CZ-NH1	-26.51	107.05	120.30
1	A	14(D)	ARG	CD-NE-CZ	13.43	142.41	123.60
2	B	101	ARG	NE-CZ-NH2	11.06	125.83	120.30
2	B	91	HIS	CG-ND1-CE1	10.84	123.37	108.20
2	B	233	ARG	NE-CZ-NH2	-9.25	115.68	120.30

Continued on next page...

Continued from previous page...

Mol	Chain	Res	Type	Atoms	Z	Observed(°)	Ideal(°)
2	B	75	ARG	NH1-CZ-NH2	8.43	128.67	119.40
2	B	173	ARG	NE-CZ-NH1	-8.23	116.18	120.30
2	B	50	ARG	CG-CD-NE	8.14	128.90	111.80
2	B	30[A]	GLN	CB-CG-CD	8.13	132.74	111.60
2	B	30[B]	GLN	CB-CG-CD	8.13	132.74	111.60
2	B	35	ARG	NE-CZ-NH1	8.13	124.36	120.30
2	B	75	ARG	NE-CZ-NH2	7.96	124.28	120.30
2	B	35	ARG	NE-CZ-NH2	-7.84	116.38	120.30
2	B	94	TYR	CB-CG-CD1	7.80	125.68	121.00
2	B	187	ARG	NE-CZ-NH2	-7.63	116.48	120.30
2	B	92	PRO	O-C-N	-7.42	110.83	122.70
2	B	30[A]	GLN	OE1-CD-NE2	-7.30	105.12	121.90
2	B	30[B]	GLN	OE1-CD-NE2	-7.30	105.12	121.90
2	B	91	HIS	ND1-CG-CD2	-7.06	96.12	106.00
1	A	14(D)	ARG	NE-CZ-NH1	6.95	123.77	120.30
2	B	92	PRO	C-N-CA	6.46	137.85	121.70
1	A	4	ARG	NE-CZ-NH2	6.36	123.48	120.30
2	B	94	TYR	CB-CG-CD2	-6.25	117.25	121.00
2	B	97	ARG	NE-CZ-NH2	-5.85	117.37	120.30
2	B	97	ARG	NE-CZ-NH1	5.77	123.18	120.30
2	B	206	ARG	CD-NE-CZ	5.69	131.57	123.60
2	B	186(A)	ASP	CB-CG-OD1	5.67	123.41	118.30
2	B	187	ARG	NE-CZ-NH1	5.67	123.14	120.30
2	B	50	ARG	CD-NE-CZ	5.52	131.33	123.60
2	B	77(A)	ARG	NE-CZ-NH1	5.24	122.92	120.30
2	B	30[A]	GLN	CG-CD-OE1	5.24	132.08	121.60
2	B	30[B]	GLN	CG-CD-OE1	5.24	132.08	121.60
2	B	97(A)	GLU	OE1-CD-OE2	5.16	129.49	123.30

All (1) chirality outliers are listed below:

Mol	Chain	Res	Type	Atom
1	A	14(L)	ASP	CA

There are no planarity outliers.

5.2 Too-close contacts ⓘ

In the following table, the Non-H and H(model) columns list the number of non-hydrogen atoms and hydrogen atoms in the chain respectively. The H(added) column lists the number of hydrogen atoms added and optimized by MolProbity. The Clashes column lists the number of clashes within the asymmetric unit, whereas Symm-Clashes lists symmetry related clashes.

Mol	Chain	Non-H	H(model)	H(added)	Clashes	Symm-Clashes
1	A	248	0	256	13	0
2	B	2073	0	2041	22	0
3	H	94	0	74	1	0
4	B	1	0	0	0	0
5	B	1	0	0	0	0
6	B	33	0	38	2	0
7	A	44	0	0	2	0
7	B	294	0	0	12	0
7	H	7	0	0	0	0
All	All	2795	0	2409	37	0

The all-atom clashscore is defined as the number of clashes found per 1000 atoms (including hydrogen atoms). The all-atom clashscore for this structure is 8.

All (37) close contacts within the same asymmetric unit are listed below, sorted by their clash magnitude.

Atom-1	Atom-2	Interatomic distance (Å)	Clash overlap (Å)
6:B:2250:897:H12	7:B:1278:HOH:O	1.55	1.02
1:A:14(K):ILE:HG13	1:A:14(L):ASP:N	1.90	0.87
1:A:9[B]:LYS:HE3	7:A:1010:HOH:O	1.85	0.77
1:A:14(K):ILE:O	1:A:14(L):ASP:OD1	2.07	0.72
1:A:9[B]:LYS:HG2	7:A:1009:HOH:O	1.95	0.67
2:B:53:LEU:HD23	7:B:1258:HOH:O	1.94	0.67
2:B:151:GLN:HG2	7:B:1174:HOH:O	1.95	0.66
1:A:14(K):ILE:O	1:A:14(L):ASP:CB	2.43	0.65
2:B:81:LYS:HG3	7:B:1146:HOH:O	1.97	0.64
2:B:53:LEU:CD2	7:B:1258:HOH:O	2.45	0.63
2:B:247:GLU:OE1	2:B:247:GLU:HA	2.00	0.62
1:A:14(K):ILE:CG1	1:A:14(L):ASP:N	2.63	0.61
1:A:14(A):LYS:HB2	7:B:1029:HOH:O	2.04	0.58
1:A:14(K):ILE:O	1:A:14(L):ASP:HB2	2.03	0.58
2:B:209:GLN:CD	7:B:1258:HOH:O	2.42	0.57
2:B:22:ALA:HB2	2:B:157[B]:VAL:HG23	1.86	0.57
2:B:75:ARG:NH1	7:B:1103:HOH:O	2.38	0.56
2:B:33[A]:LEU:CD2	2:B:66:VAL:HG12	2.37	0.55
2:B:35:ARG:HD2	2:B:37(A):PRO:O	2.07	0.55
2:B:139:THR:HG22	2:B:157[B]:VAL:HG22	1.88	0.54
6:B:2250:897:C12	7:B:1278:HOH:O	2.29	0.53
2:B:75:ARG:CZ	7:B:1103:HOH:O	2.58	0.51
1:A:14(K):ILE:C	1:A:14(L):ASP:OD1	2.51	0.48
2:B:30[B]:GLN:NE2	2:B:139:THR:OG1	2.43	0.48
2:B:22:ALA:HB2	2:B:157[B]:VAL:CG2	2.44	0.48

Continued on next page...

Continued from previous page...

Atom-1	Atom-2	Interatomic distance (Å)	Clash overlap (Å)
2:B:75:ARG:HG2	3:H:57:GLU:OE1	2.13	0.47
1:A:14(A):LYS:HD2	7:B:1029:HOH:O	2.14	0.47
2:B:66:VAL:CG2	2:B:83:SER:HB2	2.45	0.47
2:B:60(F):LYS:NZ	7:B:1079:HOH:O	2.49	0.45
2:B:75:ARG:HG2	2:B:76:TYR:N	2.33	0.43
1:A:13[B]:GLU:HG3	1:A:14(C):GLU:CD	2.38	0.43
1:A:3:LEU:O	1:A:9[B]:LYS:HE2	2.19	0.43
2:B:60(I):THR:HG22	2:B:63:ASP:OD2	2.19	0.42
2:B:75:ARG:HE	2:B:75:ARG:HB3	1.51	0.42
2:B:204(B):ASN:O	2:B:205[B]:ASN:HB3	2.20	0.41
2:B:211:GLY:HA2	2:B:229:THR:O	2.20	0.41
1:A:14(K):ILE:O	1:A:14(L):ASP:CG	2.58	0.40

There are no symmetry-related clashes.

5.3 Torsion angles [i](#)

5.3.1 Protein backbone [i](#)

In the following table, the Percentiles column shows the percent Ramachandran outliers of the chain as a percentile score with respect to all X-ray entries followed by that with respect to entries of similar resolution.

The Analysed column shows the number of residues for which the backbone conformation was analysed, and the total number of residues.

Mol	Chain	Analysed	Favoured	Allowed	Outliers	Percentiles	
1	A	29/36 (81%)	28 (97%)	1 (3%)	0	100	100
2	B	257/259 (99%)	249 (97%)	8 (3%)	0	100	100
3	H	7/10 (70%)	7 (100%)	0	0	100	100
All	All	293/305 (96%)	284 (97%)	9 (3%)	0	100	100

There are no Ramachandran outliers to report.

5.3.2 Protein sidechains [i](#)

In the following table, the Percentiles column shows the percent sidechain outliers of the chain as a percentile score with respect to all X-ray entries followed by that with respect to entries of similar resolution.

The Analysed column shows the number of residues for which the sidechain conformation was analysed, and the total number of residues.

Mol	Chain	Analysed	Rotameric	Outliers	Percentiles	
1	A	29/31 (94%)	27 (93%)	2 (7%)	19	1
2	B	228/225 (101%)	224 (98%)	4 (2%)	66	32
3	H	9/9 (100%)	9 (100%)	0	100	100
All	All	266/265 (100%)	260 (98%)	6 (2%)	57	21

All (6) residues with a non-rotameric sidechain are listed below:

Mol	Chain	Res	Type
1	A	1(A)	ASP
1	A	14(L)	ASP
2	B	64	LEU
2	B	75	ARG
2	B	182	CYS
2	B	247	GLU

Some sidechains can be flipped to improve hydrogen bonding and reduce clashes. All (1) such sidechains are listed below:

Mol	Chain	Res	Type
2	B	244	GLN

5.3.3 RNA ⓘ

There are no RNA molecules in this entry.

5.4 Non-standard residues in protein, DNA, RNA chains ⓘ

1 non-standard protein/DNA/RNA residue is modelled in this entry.

In the following table, the Counts columns list the number of bonds (or angles) for which Mogul statistics could be retrieved, the number of bonds (or angles) that are observed in the model and the number of bonds (or angles) that are defined in the chemical component dictionary. The Link column lists molecule types, if any, to which the group is linked. The Z score for a bond length (or angle) is the number of standard deviations the observed value is removed from the expected value. A bond length (or angle) with $|Z| > 2$ is considered an outlier worth inspection. RMSZ is the root-mean-square of all Z scores of the bond lengths (or angles).

Mol	Type	Chain	Res	Link	Bond lengths			Bond angles		
					Counts	RMSZ	# Z > 2	Counts	RMSZ	# Z > 2
3	TYS	H	63	3	15,16,17	1.56	1 (6%)	16,22,24	0.84	1 (6%)

In the following table, the Chirals column lists the number of chiral outliers, the number of chiral centers analysed, the number of these observed in the model and the number defined in the chemical component dictionary. Similar counts are reported in the Torsion and Rings columns. '-' means no outliers of that kind were identified.

Mol	Type	Chain	Res	Link	Chirals	Torsions	Rings
3	TYS	H	63	3	-	0/9/11/13	0/1/1/1

All (1) bond length outliers are listed below:

Mol	Chain	Res	Type	Atoms	Z	Observed(Å)	Ideal(Å)
3	H	63	TYS	OH-S	-5.28	1.53	1.63

All (1) bond angle outliers are listed below:

Mol	Chain	Res	Type	Atoms	Z	Observed(°)	Ideal(°)
3	H	63	TYS	O-C-CA	-2.55	118.83	125.49

There are no chirality outliers.

There are no torsion outliers.

There are no ring outliers.

No monomer is involved in short contacts.

5.5 Carbohydrates [i](#)

There are no carbohydrates in this entry.

5.6 Ligand geometry [i](#)

Of 3 ligands modelled in this entry, 2 are monoatomic - leaving 1 for Mogul analysis.

In the following table, the Counts columns list the number of bonds (or angles) for which Mogul statistics could be retrieved, the number of bonds (or angles) that are observed in the model and the number of bonds (or angles) that are defined in the chemical component dictionary. The Link column lists molecule types, if any, to which the group is linked. The Z score for a bond length (or angle) is the number of standard deviations the observed value is removed from the expected value. A bond length (or angle) with $|Z| > 2$ is considered an outlier worth inspection. RMSZ is the root-mean-square of all Z scores of the bond lengths (or angles).

Mol	Type	Chain	Res	Link	Bond lengths			Bond angles		
					Counts	RMSZ	# Z > 2	Counts	RMSZ	# Z > 2
6	897	B	2250	-	34,34,34	1.77	7 (20%)	44,47,47	2.06	12 (27%)

In the following table, the Chirals column lists the number of chiral outliers, the number of chiral centers analysed, the number of these observed in the model and the number defined in the chemical component dictionary. Similar counts are reported in the Torsion and Rings columns. '-' means no outliers of that kind were identified.

Mol	Type	Chain	Res	Link	Chirals	Torsions	Rings
6	897	B	2250	-	-	0/31/31/31	0/2/2/2

All (7) bond length outliers are listed below:

Mol	Chain	Res	Type	Atoms	Z	Observed(Å)	Ideal(Å)
6	B	2250	897	C6-C5	-4.28	1.44	1.52
6	B	2250	897	C5-C4	-4.28	1.43	1.51
6	B	2250	897	C18-C17	-3.83	1.33	1.39
6	B	2250	897	C16-C17	2.33	1.42	1.39
6	B	2250	897	C15-C19	2.43	1.43	1.38
6	B	2250	897	C2-C3	2.79	1.59	1.52
6	B	2250	897	O2-C21	3.31	1.29	1.22

All (12) bond angle outliers are listed below:

Mol	Chain	Res	Type	Atoms	Z	Observed(°)	Ideal(°)
6	B	2250	897	C13-C12-N4	-6.70	111.97	123.64
6	B	2250	897	C10-C11-N4	-3.55	117.47	123.64
6	B	2250	897	O1-C4-N1	-3.47	117.59	123.05
6	B	2250	897	C18-C19-C15	-2.69	114.65	118.08
6	B	2250	897	O2-C21-C17	-2.66	115.13	120.17
6	B	2250	897	C20-C19-C18	2.09	124.12	120.95
6	B	2250	897	C5-C4-N1	2.50	119.84	115.62
6	B	2250	897	C12-C13-C9	2.69	123.02	118.94
6	B	2250	897	C3-N1-C4	2.83	129.79	126.39
6	B	2250	897	C17-C18-C19	3.11	124.48	121.15
6	B	2250	897	C14-C15-C19	3.21	123.23	119.61
6	B	2250	897	C12-N4-C11	5.49	130.09	116.83

There are no chirality outliers.

There are no torsion outliers.

There are no ring outliers.

1 monomer is involved in 2 short contacts:

Mol	Chain	Res	Type	Clashes	Symm-Clashes
6	B	2250	897	2	0

5.7 Other polymers [i](#)

There are no such residues in this entry.

5.8 Polymer linkage issues [i](#)

There are no chain breaks in this entry.

6 Fit of model and data [i](#)

6.1 Protein, DNA and RNA chains [i](#)

In the following table, the column labelled ‘#RSRZ> 2’ contains the number (and percentage) of RSRZ outliers, followed by percent RSRZ outliers for the chain as percentile scores relative to all X-ray entries and entries of similar resolution. The OWAB column contains the minimum, median, 95th percentile and maximum values of the occupancy-weighted average B-factor per residue. The column labelled ‘Q< 0.9’ lists the number of (and percentage) of residues with an average occupancy less than 0.9.

Mol	Chain	Analysed	<RSRZ>	#RSRZ>2	OWAB(Å ²)	Q<0.9
1	A	28/36 (77%)	1.90	6 (21%) 1 1	11, 16, 41, 122	0
2	B	252/259 (97%)	1.54	67 (26%) 1 1	9, 18, 39, 69	0
3	H	9/10 (90%)	3.34	8 (88%) 0 0	32, 37, 60, 71	0
All	All	289/305 (94%)	1.63	81 (28%) 1 1	9, 18, 42, 122	0

All (81) RSRZ outliers are listed below:

Mol	Chain	Res	Type	RSRZ
1	A	14(L)	ASP	8.0
1	A	14(K)	ILE	6.8
2	B	147	THR	6.7
2	B	186(A)	ASP	5.6
1	A	1(B)	ALA	5.5
2	B	37(A)	PRO	5.3
3	H	55	ASP	5.3
2	B	247	GLU	5.3
2	B	186(C)	GLY	4.5
2	B	37	SER	4.2
3	H	64	LEU	4.2
3	H	59	ILE	4.1
3	H	60	PRO	3.9
3	H	61	GLU	3.8
2	B	207	TRP	3.6
2	B	155	LEU	3.6
2	B	176[A]	ILE	3.5
2	B	245	PHE	3.5
2	B	99	LEU	3.3
2	B	103	ILE	3.3
3	H	62	GLU	3.2
2	B	242	ILE	3.0
2	B	33[A]	LEU	3.0

Continued on next page...

Continued from previous page...

Mol	Chain	Res	Type	RSRZ
1	A	1(A)	ASP	3.0
2	B	68	ILE	2.9
2	B	234	LEU	2.9
2	B	24	ILE	2.9
2	B	29	TRP	2.9
3	H	56	PHE	2.8
2	B	62	ASN	2.8
2	B	213	VAL	2.7
2	B	183	ALA	2.6
2	B	128	THR	2.6
2	B	162	ILE	2.5
2	B	238	ILE	2.5
2	B	208	TYR	2.5
2	B	60(D)	TRP	2.5
2	B	66	VAL	2.5
1	A	7	PHE	2.5
2	B	246	GLY	2.5
2	B	167	VAL	2.5
2	B	168	CYS	2.4
2	B	151	GLN	2.4
2	B	129(C)	LEU	2.4
2	B	160	LEU	2.4
2	B	60(I)	THR	2.3
2	B	215	TRP	2.3
1	A	1	CYS	2.3
2	B	94	TYR	2.3
2	B	154	VAL	2.3
2	B	231	VAL	2.3
2	B	46	LEU	2.3
2	B	118	ILE	2.3
3	H	58	GLU	2.3
2	B	138	VAL	2.3
2	B	158	VAL	2.3
2	B	225	TYR	2.3
2	B	227	PHE	2.2
2	B	96	TRP	2.2
2	B	75	ARG	2.2
2	B	141	TRP	2.2
2	B	200	VAL	2.2
2	B	65	LEU	2.2
2	B	204(A)	PHE	2.2
2	B	31	VAL	2.2

Continued on next page...

Continued from previous page...

Mol	Chain	Res	Type	RSRZ
2	B	113	ALA	2.2
2	B	122	CYS	2.1
2	B	140	GLY	2.1
2	B	205[A]	ASN	2.1
2	B	163	VAL	2.1
2	B	174	ILE	2.1
2	B	181	PHE	2.1
2	B	82	ILE	2.1
2	B	121	VAL	2.0
2	B	201	MET	2.0
2	B	150	GLY	2.0
2	B	53	LEU	2.0
2	B	105	LEU	2.0
2	B	228	TYR	2.0
2	B	191	CYS	2.0
2	B	172	THR	2.0

6.2 Non-standard residues in protein, DNA, RNA chains [i](#)

In the following table, the Atoms column lists the number of modelled atoms in the group and the number defined in the chemical component dictionary. LLDF column lists the quality of electron density of the group with respect to its neighbouring residues in protein, DNA or RNA chains. The B-factors column lists the minimum, median, 95th percentile and maximum values of B factors of atoms in the group. The column labelled 'Q< 0.9' lists the number of atoms with occupancy less than 0.9.

Mol	Type	Chain	Res	Atoms	RSCC	RSR	LLDF	B-factors(Å ²)	Q<0.9
3	TYS	H	63	16/17	0.90	0.15	-	34,37,39,41	0

6.3 Carbohydrates [i](#)

There are no carbohydrates in this entry.

6.4 Ligands [i](#)

In the following table, the Atoms column lists the number of modelled atoms in the group and the number defined in the chemical component dictionary. LLDF column lists the quality of electron density of the group with respect to its neighbouring residues in protein, DNA or RNA chains. The B-factors column lists the minimum, median, 95th percentile and maximum values of B factors of atoms in the group. The column labelled 'Q< 0.9' lists the number of atoms with occupancy less than 0.9.

Mol	Type	Chain	Res	Atoms	RSCC	RSR	LLDF	B-factors(\AA^2)	Q<0.9
5	CA	B	2249	1/1	0.94	0.18	1.94	23,23,23,23	0
6	897	B	2250	33/33	0.88	0.13	-0.43	9,13,32,34	0
4	NA	B	2248	1/1	0.92	0.10	-1.19	19,19,19,19	0

6.5 Other polymers [i](#)

There are no such residues in this entry.