



Full wwPDB X-ray Structure Validation Report ⓘ

Feb 1, 2016 – 01:46 PM GMT

PDB ID : 3UU1
Title : Anthranilate phosphoribosyltransferase (trpD) from Mycobacterium tuberculosis (complex with inhibitor ACS142)
Authors : Castell, A.; Short, F.L.; Lott, J.S.
Deposited on : 2011-11-27
Resolution : 1.82 Å(reported)

This is a Full wwPDB X-ray Structure Validation Report for a publicly released PDB entry.
We welcome your comments at validation@mail.wwpdb.org
A user guide is available at
<http://wwpdb.org/validation/2016/XrayValidationReportHelp>
with specific help available everywhere you see the ⓘ symbol.

The following versions of software and data (see [references ⓘ](#)) were used in the production of this report:

MolProbity : 4.02b-467
Mogul : 1.7 (RC4), CSD as536be (2015)
Xtriage (Phenix) : 1.9-1692
EDS : rb-20026688
Percentile statistics : 20151230.v01 (using entries in the PDB archive December 30th 2015)
Refmac : 5.8.0135
CCP4 : 6.5.0
Ideal geometry (proteins) : Engh & Huber (2001)
Ideal geometry (DNA, RNA) : Parkinson et al. (1996)
Validation Pipeline (wwPDB-VP) : trunk26865

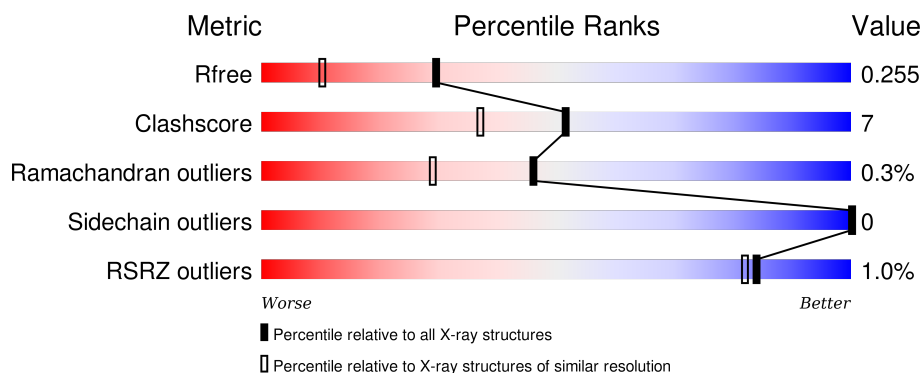
1 Overall quality at a glance

The following experimental techniques were used to determine the structure:

X-RAY DIFFRACTION

The reported resolution of this entry is 1.82 Å.

Percentile scores (ranging between 0-100) for global validation metrics of the entry are shown in the following graphic. The table shows the number of entries on which the scores are based.



Metric	Whole archive (#Entries)	Similar resolution (#Entries, resolution range(Å))
R_{free}	91344	5422 (1.84-1.80)
Clashscore	102246	6347 (1.84-1.80)
Ramachandran outliers	100387	6276 (1.84-1.80)
Sidechain outliers	100360	6276 (1.84-1.80)
RSRZ outliers	91569	5439 (1.84-1.80)

The table below summarises the geometric issues observed across the polymeric chains and their fit to the electron density. The red, orange, yellow and green segments on the lower bar indicate the fraction of residues that contain outliers for ≥ 3 , 2, 1 and 0 types of geometric quality criteria. A grey segment represents the fraction of residues that are not modelled. The numeric value for each fraction is indicated below the corresponding segment, with a dot representing fractions $\leq 5\%$. The upper red bar (where present) indicates the fraction of residues that have poor fit to the electron density. The numeric value is given above the bar.

Mol	Chain	Length	Quality of chain
1	A	377	<div> <div style="width: 100%; height: 10px; background-color: red;"></div> <div style="display: flex; justify-content: space-between; align-items: center;"> <div style="width: 79%; height: 10px; background-color: green;"></div> <div style="width: 10%; height: 10px; background-color: yellow;"></div> <div style="width: 10%; height: 10px; background-color: grey;"></div> </div> <div style="display: flex; justify-content: space-between; align-items: center;"> 79% 10% • 10% </div> </div>
1	B	377	<div> <div style="width: 78%; height: 10px; background-color: green;"></div> <div style="width: 11%; height: 10px; background-color: yellow;"></div> <div style="width: 10%; height: 10px; background-color: grey;"></div> </div> <div style="display: flex; justify-content: space-between; align-items: center;"> 78% 11% • 10% </div>
1	C	377	<div> <div style="width: 100%; height: 10px; background-color: red;"></div> <div style="display: flex; justify-content: space-between; align-items: center;"> <div style="width: 78%; height: 10px; background-color: green;"></div> <div style="width: 12%; height: 10px; background-color: yellow;"></div> <div style="width: 10%; height: 10px; background-color: grey;"></div> </div> <div style="display: flex; justify-content: space-between; align-items: center;"> 78% 12% 10% </div> </div>
1	D	377	<div> <div style="width: 2%; height: 10px; background-color: red;"></div> <div style="width: 81%; height: 10px; background-color: green;"></div> <div style="width: 8%; height: 10px; background-color: yellow;"></div> <div style="width: 10%; height: 10px; background-color: grey;"></div> </div> <div style="display: flex; justify-content: space-between; align-items: center;"> 2% 81% 8% • 10% </div>

The following table lists non-polymeric compounds, carbohydrate monomers and non-standard

residues in protein, DNA, RNA chains that are outliers for geometric or electron-density-fit criteria:

Mol	Type	Chain	Res	Chirality	Geometry	Clashes	Electron density
2	PRP	B	401	-	-	X	-
4	14B	B	404	-	-	-	X
4	14B	B	405	-	-	-	X
4	14B	C	405	-	-	-	X
4	14B	D	402	-	-	-	X

2 Entry composition

There are 5 unique types of molecules in this entry. The entry contains 11068 atoms, of which 0 are hydrogens and 0 are deuteriums.

In the tables below, the ZeroOcc column contains the number of atoms modelled with zero occupancy, the AltConf column contains the number of residues with at least one atom in alternate conformation and the Trace column contains the number of residues modelled with at most 2 atoms.

- Molecule 1 is a protein called Anthranilate phosphoribosyltransferase.

Mol	Chain	Residues	Atoms					ZeroOcc	AltConf	Trace
1	A	338	Total	C	N	O	S	0	0	0
			2449	1534	454	452	9			
1	B	339	Total	C	N	O	S	0	0	0
			2458	1539	455	455	9			
1	C	339	Total	C	N	O	S	0	0	0
			2457	1539	455	454	9			
1	D	338	Total	C	N	O	S	0	0	0
			2449	1534	454	452	9			

There are 32 discrepancies between the modelled and reference sequences:

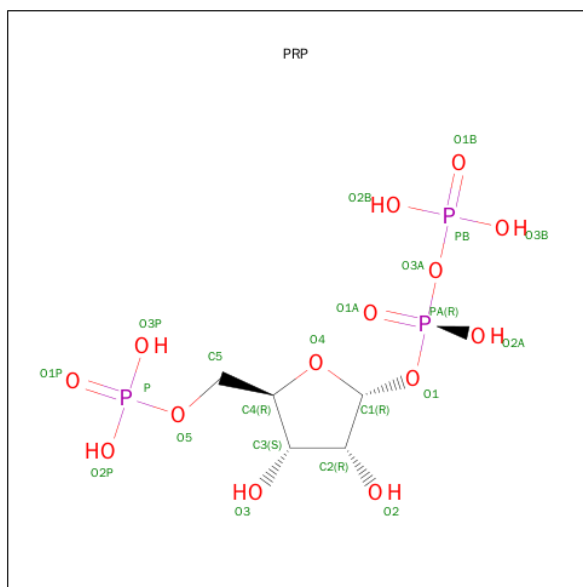
Chain	Residue	Modelled	Actual	Comment	Reference
A	371	LEU	-	EXPRESSION TAG	UNP P66992
A	372	GLU	-	EXPRESSION TAG	UNP P66992
A	373	HIS	-	EXPRESSION TAG	UNP P66992
A	374	HIS	-	EXPRESSION TAG	UNP P66992
A	375	HIS	-	EXPRESSION TAG	UNP P66992
A	376	HIS	-	EXPRESSION TAG	UNP P66992
A	377	HIS	-	EXPRESSION TAG	UNP P66992
A	378	HIS	-	EXPRESSION TAG	UNP P66992
B	371	LEU	-	EXPRESSION TAG	UNP P66992
B	372	GLU	-	EXPRESSION TAG	UNP P66992
B	373	HIS	-	EXPRESSION TAG	UNP P66992
B	374	HIS	-	EXPRESSION TAG	UNP P66992
B	375	HIS	-	EXPRESSION TAG	UNP P66992
B	376	HIS	-	EXPRESSION TAG	UNP P66992
B	377	HIS	-	EXPRESSION TAG	UNP P66992
B	378	HIS	-	EXPRESSION TAG	UNP P66992
C	371	LEU	-	EXPRESSION TAG	UNP P66992
C	372	GLU	-	EXPRESSION TAG	UNP P66992
C	373	HIS	-	EXPRESSION TAG	UNP P66992
C	374	HIS	-	EXPRESSION TAG	UNP P66992
C	375	HIS	-	EXPRESSION TAG	UNP P66992

Continued on next page...

Continued from previous page...

Chain	Residue	Modelled	Actual	Comment	Reference
C	376	HIS	-	EXPRESSION TAG	UNP P66992
C	377	HIS	-	EXPRESSION TAG	UNP P66992
C	378	HIS	-	EXPRESSION TAG	UNP P66992
D	371	LEU	-	EXPRESSION TAG	UNP P66992
D	372	GLU	-	EXPRESSION TAG	UNP P66992
D	373	HIS	-	EXPRESSION TAG	UNP P66992
D	374	HIS	-	EXPRESSION TAG	UNP P66992
D	375	HIS	-	EXPRESSION TAG	UNP P66992
D	376	HIS	-	EXPRESSION TAG	UNP P66992
D	377	HIS	-	EXPRESSION TAG	UNP P66992
D	378	HIS	-	EXPRESSION TAG	UNP P66992

- Molecule 2 is ALPHA-PHOSPHORIBOSYLPYROPHOSPHORIC ACID (three-letter code: PRP) (formula: $C_5H_{13}O_{14}P_3$).

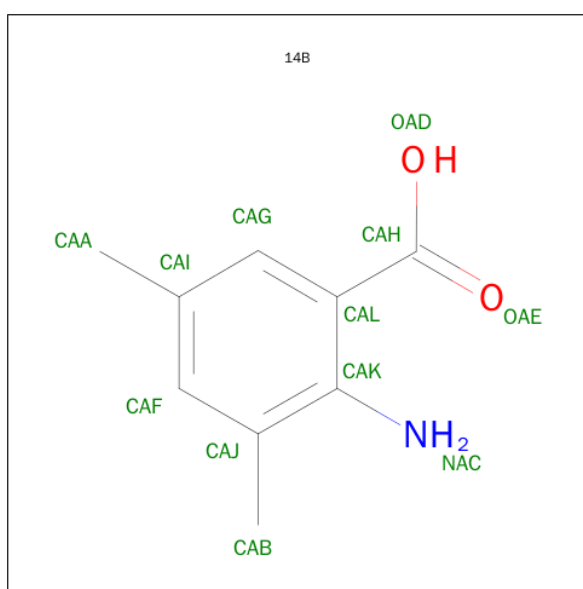


Mol	Chain	Residues	Atoms				ZeroOcc	AltConf
2	A	1	Total	C	O	P	0	0
			22	5	14	3		
2	B	1	Total	C	O	P	0	0
			22	5	14	3		
2	C	1	Total	C	O	P	0	0
			22	5	14	3		
2	D	1	Total	C	O	P	0	0
			22	5	14	3		

- Molecule 3 is MAGNESIUM ION (three-letter code: MG) (formula: Mg).

Mol	Chain	Residues	Atoms	ZeroOcc	AltConf
3	B	2	Total Mg 2 2	0	0
3	A	2	Total Mg 2 2	0	0
3	D	2	Total Mg 2 2	0	0
3	C	2	Total Mg 2 2	0	0

- Molecule 4 is 2-AMINO-3,5-DIMETHYLBENZOIC ACID (three-letter code: 14B) (formula: $C_9H_{11}NO_2$).



Mol	Chain	Residues	Atoms	ZeroOcc	AltConf
4	A	1	Total C N O 12 9 1 2	0	0
4	B	1	Total C N O 12 9 1 2	0	0
4	B	1	Total C N O 12 9 1 2	0	0
4	C	1	Total C N O 12 9 1 2	0	0
4	C	1	Total C N O 12 9 1 2	0	0
4	D	1	Total C N O 12 9 1 2	0	0

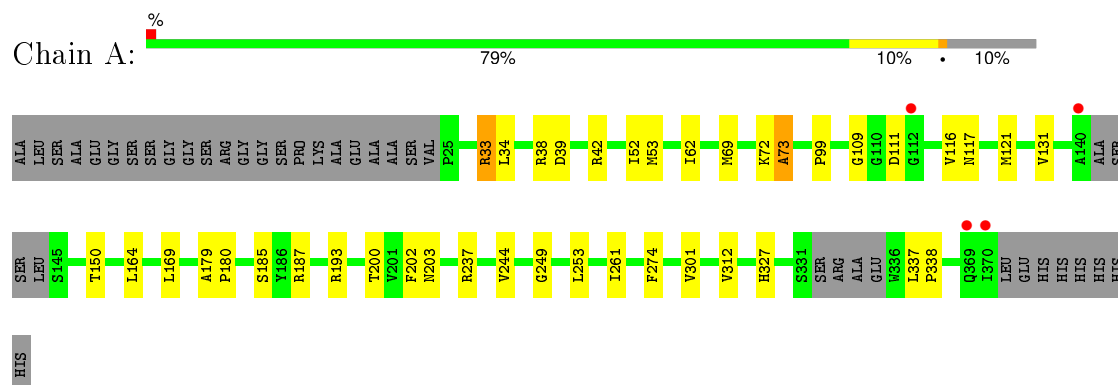
- Molecule 5 is water.

Mol	Chain	Residues	Atoms		ZeroOcc	AltConf
5	A	271	Total 271	O 271	0	0
5	B	326	Total 326	O 326	0	0
5	C	325	Total 325	O 325	0	0
5	D	165	Total 165	O 165	0	0

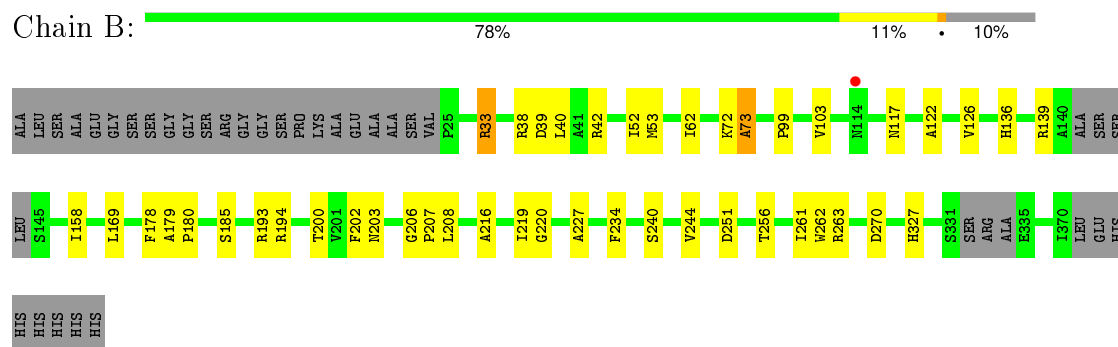
3 Residue-property plots [i](#)

These plots are drawn for all protein, RNA and DNA chains in the entry. The first graphic for a chain summarises the proportions of errors displayed in the second graphic. The second graphic shows the sequence view annotated by issues in geometry and electron density. Residues are color-coded according to the number of geometric quality criteria for which they contain at least one outlier: green = 0, yellow = 1, orange = 2 and red = 3 or more. A red dot above a residue indicates a poor fit to the electron density ($RSRZ > 2$). Stretches of 2 or more consecutive residues without any outlier are shown as a green connector. Residues present in the sample, but not in the model, are shown in grey.

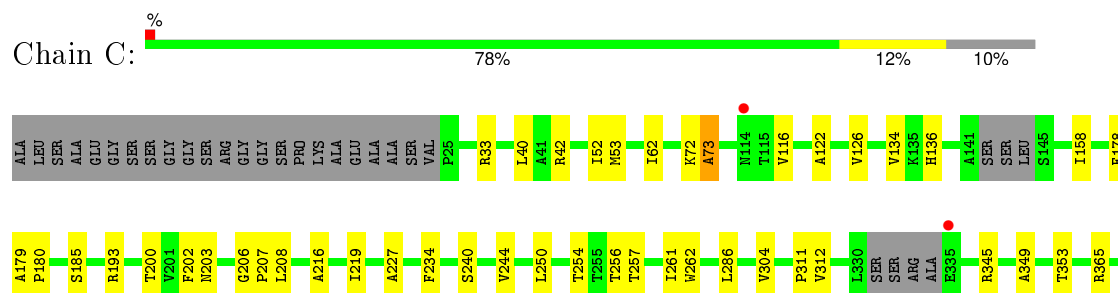
- Molecule 1: Anthranilate phosphoribosyltransferase

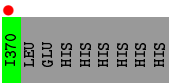


- Molecule 1: Anthranilate phosphoribosyltransferase

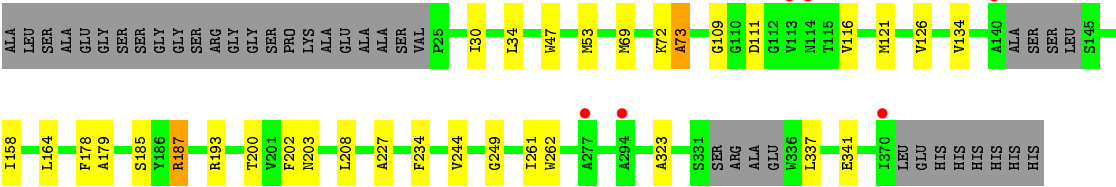
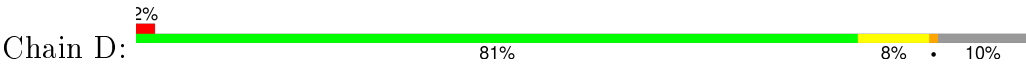


- Molecule 1: Anthranilate phosphoribosyltransferase





● Molecule 1: Anthranilate phosphoribosyltransferase



4 Data and refinement statistics

Property	Value	Source
Space group	P 1 21 1	Depositor
Cell constants a, b, c, α , β , γ	78.23Å 110.96Å 80.38Å 90.00° 89.97° 90.00°	Depositor
Resolution (Å)	80.38 – 1.82 65.10 – 1.82	Depositor EDS
% Data completeness (in resolution range)	93.6 (80.38-1.82) 93.6 (65.10-1.82)	Depositor EDS
R_{merge}	0.08	Depositor
R_{sym}	0.03	Depositor
$\langle I/\sigma(I) \rangle$ ¹	1.17 (at 1.82Å)	Xtriage
Refinement program	REFMAC 5.5.0102	Depositor
R, R_{free}	0.212 , 0.256 0.213 , 0.255	Depositor DCC
R_{free} test set	5742 reflections (5.29%)	DCC
Wilson B-factor (Å ²)	15.7	Xtriage
Anisotropy	0.584	Xtriage
Bulk solvent k_{sol} (e/Å ³), B_{sol} (Å ²)	0.36 , 25.2	EDS
Estimated twinning fraction	0.019 for -l,k,h 0.487 for h,-k,-l 0.021 for -l,-k,-h	Xtriage
L-test for twinning ²	$\langle L \rangle = 0.50$, $\langle L^2 \rangle = 0.33$	Xtriage
Outliers	7 of 114194 reflections (0.006%)	Xtriage
F_o, F_c correlation	0.95	EDS
Total number of atoms	11068	wwPDB-VP
Average B, all atoms (Å ²)	20.0	wwPDB-VP

Xtriage's analysis on translational NCS is as follows: *The analyses of the Patterson function reveals a significant off-origin peak that is 49.48 % of the origin peak, indicating pseudo translational symmetry. The chance of finding a peak of this or larger height randomly in a structure without pseudo translational symmetry is equal to 7.4200e-05. The detected translational NCS is most likely also responsible for the elevated intensity ratio.*

¹ Intensities estimated from amplitudes.

² Theoretical values of $\langle |L| \rangle$, $\langle L^2 \rangle$ for acentric reflections are 0.5, 0.375 respectively for untwinned datasets, and 0.333, 0.2 for perfectly twinned datasets.

5 Model quality [i](#)

5.1 Standard geometry [i](#)

Bond lengths and bond angles in the following residue types are not validated in this section: MG, 14B, PRP

The Z score for a bond length (or angle) is the number of standard deviations the observed value is removed from the expected value. A bond length (or angle) with $|Z| > 5$ is considered an outlier worth inspection. RMSZ is the root-mean-square of all Z scores of the bond lengths (or angles).

Mol	Chain	Bond lengths		Bond angles	
		RMSZ	# Z >5	RMSZ	# Z >5
1	A	0.64	0/2495	0.70	3/3402 (0.1%)
1	B	0.65	0/2504	0.71	1/3414 (0.0%)
1	C	0.65	0/2503	0.69	0/3413
1	D	0.63	0/2495	0.68	1/3402 (0.0%)
All	All	0.64	0/9997	0.69	5/13631 (0.0%)

There are no bond length outliers.

All (5) bond angle outliers are listed below:

Mol	Chain	Res	Type	Atoms	Z	Observed(°)	Ideal(°)
1	A	33	ARG	NE-CZ-NH1	5.85	123.22	120.30
1	B	33	ARG	NE-CZ-NH2	-5.67	117.47	120.30
1	D	187	ARG	CG-CD-NE	-5.14	101.00	111.80
1	A	33	ARG	NE-CZ-NH2	-5.09	117.75	120.30
1	A	187	ARG	NE-CZ-NH2	-5.02	117.79	120.30

There are no chirality outliers.

There are no planarity outliers.

5.2 Too-close contacts [i](#)

In the following table, the Non-H and H(model) columns list the number of non-hydrogen atoms and hydrogen atoms in the chain respectively. The H(added) column lists the number of hydrogen atoms added and optimized by MolProbity. The Clashes column lists the number of clashes within the asymmetric unit, whereas Symm-Clashes lists symmetry related clashes.

Mol	Chain	Non-H	H(model)	H(added)	Clashes	Symm-Clashes
1	A	2449	0	2443	29	0
1	B	2458	0	2449	34	0

Continued on next page...

Continued from previous page...

Mol	Chain	Non-H	H(model)	H(added)	Clashes	Symm-Clashes
1	C	2457	0	2449	32	0
1	D	2449	0	2443	27	0
2	A	22	0	8	4	0
2	B	22	0	8	7	0
2	C	22	0	8	3	0
2	D	22	0	8	2	0
3	A	2	0	0	0	0
3	B	2	0	0	0	0
3	C	2	0	0	0	0
3	D	2	0	0	0	0
4	A	12	0	10	1	0
4	B	24	0	20	4	0
4	C	24	0	20	4	0
4	D	12	0	10	1	0
5	A	271	0	0	3	0
5	B	326	0	0	11	0
5	C	325	0	0	10	0
5	D	165	0	0	3	0
All	All	11068	0	9876	134	0

The all-atom clashscore is defined as the number of clashes found per 1000 atoms (including hydrogen atoms). The all-atom clashscore for this structure is 7.

All (134) close contacts within the same asymmetric unit are listed below, sorted by their clash magnitude.

Atom-1	Atom-2	Interatomic distance (Å)	Clash overlap (Å)
1:A:109:GLY:HA3	2:A:401:PRP:H51	1.31	1.10
1:D:109:GLY:HA3	2:D:401:PRP:H51	1.55	0.86
1:B:256:THR:CG2	5:B:785:HOH:O	2.27	0.81
2:D:401:PRP:H1	5:D:576:HOH:O	1.86	0.75
2:C:401:PRP:H1	5:C:528:HOH:O	1.88	0.73
1:C:345:ARG:HD2	5:C:813:HOH:O	1.92	0.69
2:B:401:PRP:H1	5:B:799:HOH:O	1.93	0.68
1:B:244:VAL:HG12	1:B:261:ILE:HG12	1.77	0.66
1:B:99:PRO:HD2	1:B:169:LEU:HD21	1.77	0.66
1:C:193:ARG:HD2	1:C:202:PHE:HB3	1.78	0.66
1:D:116:VAL:CG1	1:D:121:MET:CE	2.74	0.66
1:D:116:VAL:HG12	1:D:121:MET:HE2	1.80	0.64
1:C:244:VAL:HG12	1:C:261:ILE:HG12	1.81	0.63
1:A:117:ASN:ND2	1:A:150:THR:OG1	2.33	0.62
2:A:401:PRP:H4	5:A:748:HOH:O	1.98	0.62

Continued on next page...

Continued from previous page...

Atom-1	Atom-2	Interatomic distance (Å)	Clash overlap (Å)
1:B:136:HIS:CE1	4:B:405:14B:HAF	2.35	0.62
1:A:244:VAL:HG12	1:A:261:ILE:HG12	1.81	0.61
1:D:116:VAL:HG12	1:D:121:MET:CE	2.30	0.61
1:D:116:VAL:CG1	1:D:121:MET:HE2	2.31	0.61
1:B:263:ARG:NH2	1:B:270:ASP:OD2	2.34	0.60
1:C:136:HIS:CE1	4:C:405:14B:HAF	2.36	0.60
1:C:365:ARG:NH1	5:C:582:HOH:O	2.34	0.60
1:B:103:VAL:HG22	1:B:216:ALA:HB3	1.84	0.60
4:B:405:14B:HAB	5:B:799:HOH:O	2.02	0.59
1:A:99:PRO:HD2	1:A:169:LEU:HD21	1.85	0.59
1:B:193:ARG:HD2	1:B:202:PHE:HB3	1.84	0.59
1:D:116:VAL:CG1	1:D:121:MET:HE1	2.33	0.58
2:B:401:PRP:H51	5:B:651:HOH:O	2.02	0.58
1:C:116:VAL:HG22	5:C:514:HOH:O	2.04	0.57
1:B:42:ARG:NE	5:B:822:HOH:O	2.26	0.57
1:C:53:MET:O	1:C:185:SER:HB3	2.04	0.57
1:D:244:VAL:HG12	1:D:261:ILE:HG12	1.87	0.56
1:C:42:ARG:HD3	5:C:770:HOH:O	2.04	0.56
1:B:33:ARG:HD3	1:B:39:ASP:O	2.05	0.56
1:B:53:MET:O	1:B:185:SER:HB3	2.06	0.56
1:B:200:THR:H	1:B:203:ASN:ND2	2.02	0.55
1:D:193:ARG:NH2	5:D:651:HOH:O	2.33	0.55
1:D:200:THR:H	1:D:203:ASN:ND2	2.05	0.54
1:B:52:ILE:HG12	1:B:62:ILE:HG12	1.90	0.54
1:B:33:ARG:HG2	1:B:38:ARG:HB2	1.87	0.54
1:A:193:ARG:HD2	1:A:202:PHE:HB3	1.89	0.53
1:B:208:LEU:HD23	1:B:234:PHE:CZ	2.44	0.53
1:A:33:ARG:HD3	1:A:39:ASP:O	2.09	0.53
1:B:33:ARG:HD2	1:B:40:LEU:HD23	1.92	0.52
1:B:72:LYS:O	1:B:73:ALA:CB	2.58	0.52
4:C:405:14B:HAB	5:C:528:HOH:O	2.10	0.51
1:A:72:LYS:O	1:A:73:ALA:CB	2.59	0.51
1:B:72:LYS:O	1:B:73:ALA:HB3	2.10	0.51
1:C:193:ARG:HG2	5:C:506:HOH:O	2.12	0.50
1:B:103:VAL:HG21	1:B:327:HIS:HB2	1.94	0.49
1:C:208:LEU:HD23	1:C:234:PHE:CZ	2.48	0.49
1:B:206:GLY:HA2	4:B:405:14B:CAF	2.43	0.48
1:D:116:VAL:HG11	1:D:121:MET:HE1	1.94	0.48
1:C:52:ILE:HG12	1:C:62:ILE:HG12	1.95	0.48
1:B:179:ALA:HB1	4:B:404:14B:HAAA	1.95	0.48
1:C:227:ALA:CB	1:C:262:TRP:CZ3	2.96	0.48

Continued on next page...

Continued from previous page...

Atom-1	Atom-2	Interatomic distance (Å)	Clash overlap (Å)
1:C:33:ARG:HD2	1:C:40:LEU:HD23	1.95	0.48
1:B:256:THR:HG21	5:B:785:HOH:O	2.06	0.48
1:B:117:ASN:HB3	2:B:401:PRP:O1B	2.14	0.48
1:A:53:MET:O	1:A:185:SER:HB3	2.12	0.48
2:B:401:PRP:H2	5:B:574:HOH:O	2.12	0.48
2:C:401:PRP:H2	5:C:535:HOH:O	2.13	0.48
1:C:227:ALA:HB3	1:C:262:TRP:CZ3	2.49	0.48
1:D:34:LEU:HD13	1:D:69:MET:HG2	1.96	0.47
1:A:42:ARG:HB2	1:A:42:ARG:CZ	2.44	0.47
1:C:200:THR:H	1:C:203:ASN:ND2	2.13	0.47
1:A:33:ARG:HG2	1:A:38:ARG:HB2	1.97	0.47
2:B:401:PRP:H4	5:B:559:HOH:O	2.15	0.46
1:B:139:ARG:O	2:B:401:PRP:O3	2.33	0.46
1:D:72:LYS:O	1:D:73:ALA:CB	2.63	0.46
1:A:109:GLY:HA3	2:A:401:PRP:C5	2.23	0.46
1:C:72:LYS:O	1:C:73:ALA:CB	2.63	0.46
1:B:227:ALA:CB	1:B:262:TRP:CZ3	2.99	0.46
1:A:337:LEU:HB2	1:A:338:PRO:HD3	1.98	0.46
1:A:179:ALA:HB1	4:A:404:14B:HAAA	1.96	0.46
1:A:121:MET:CG	1:A:301:VAL:HG22	2.46	0.46
1:D:164:LEU:HD12	5:D:620:HOH:O	2.15	0.46
1:C:206:GLY:HA2	4:C:405:14B:CAF	2.46	0.45
1:B:227:ALA:HB3	1:B:262:TRP:CZ3	2.51	0.45
1:D:193:ARG:HD2	1:D:202:PHE:HB3	1.99	0.45
1:D:158:ILE:O	1:D:178:PHE:HB2	2.17	0.45
1:B:122:ALA:O	1:B:126:VAL:HG23	2.17	0.45
1:B:158:ILE:O	1:B:178:PHE:HB2	2.17	0.45
1:C:349:ALA:O	1:C:353:THR:HG23	2.16	0.44
1:D:134:VAL:O	1:D:134:VAL:HG13	2.18	0.44
1:A:52:ILE:HG12	1:A:62:ILE:HG12	1.98	0.44
1:C:122:ALA:O	1:C:126:VAL:HG23	2.17	0.44
1:B:179:ALA:HB3	1:B:180:PRO:HD3	2.00	0.43
1:C:304:VAL:HG21	1:C:312:VAL:HG12	2.00	0.43
1:C:216:ALA:HA	1:C:240:SER:O	2.19	0.43
1:D:53:MET:O	1:D:185:SER:HB3	2.18	0.43
1:A:72:LYS:O	1:A:73:ALA:HB3	2.19	0.43
1:D:208:LEU:HD23	1:D:234:PHE:CZ	2.54	0.43
1:C:250:LEU:HD21	1:C:286:LEU:HD11	2.01	0.43
1:A:117:ASN:HB3	2:A:401:PRP:O1B	2.18	0.43
1:A:253:LEU:HD21	1:A:261:ILE:HD11	2.00	0.43
1:D:34:LEU:CD1	1:D:69:MET:HG2	2.49	0.43

Continued on next page...

Continued from previous page...

Atom-1	Atom-2	Interatomic distance (Å)	Clash overlap (Å)
1:A:121:MET:HG2	1:A:301:VAL:HG22	2.01	0.43
1:A:237:ARG:HG3	5:A:524:HOH:O	2.17	0.43
1:D:126:VAL:HG21	1:D:323:ALA:HB3	2.00	0.42
1:B:42:ARG:CD	5:B:822:HOH:O	2.67	0.42
1:D:69:MET:HE3	1:D:69:MET:HB3	1.94	0.42
1:C:72:LYS:O	1:C:73:ALA:HB3	2.19	0.42
1:A:261:ILE:HD12	1:A:274:PHE:HB2	2.01	0.42
1:C:179:ALA:HB3	1:C:180:PRO:HD3	2.00	0.42
1:B:207:PRO:HB3	1:B:219:ILE:HG23	2.00	0.42
1:C:256:THR:HG22	1:C:257:THR:HG22	2.01	0.42
1:D:111:ASP:HB2	1:D:249:GLY:O	2.19	0.42
1:B:216:ALA:HA	1:B:240:SER:O	2.20	0.42
1:C:134:VAL:O	1:C:134:VAL:HG13	2.20	0.42
1:C:193:ARG:HD2	1:C:202:PHE:CB	2.49	0.42
2:B:401:PRP:C5	5:B:651:HOH:O	2.65	0.42
1:D:179:ALA:HB1	4:D:402:14B:HAAA	2.00	0.42
1:A:131:VAL:HG13	1:A:327:HIS:CD2	2.56	0.41
1:D:337:LEU:O	1:D:341:GLU:HG2	2.20	0.41
1:A:116:VAL:HG21	1:A:312:VAL:HG13	2.02	0.41
1:A:34:LEU:HD13	1:A:69:MET:HG2	2.02	0.41
1:B:194:ARG:NH2	5:B:649:HOH:O	2.52	0.41
1:B:193:ARG:HD2	1:B:202:PHE:CB	2.49	0.41
1:A:179:ALA:HB3	1:A:180:PRO:HD3	2.03	0.41
1:C:207:PRO:HB3	1:C:219:ILE:HG23	2.02	0.41
1:A:200:THR:H	1:A:203:ASN:ND2	2.18	0.41
1:A:111:ASP:HB2	1:A:249:GLY:O	2.19	0.41
1:C:193:ARG:NH1	4:C:405:14B:OAE	2.49	0.41
1:C:254:THR:OG1	1:C:256:THR:HB	2.21	0.41
1:D:30:ILE:HD12	1:D:47:TRP:CE3	2.56	0.41
1:A:164:LEU:HD12	5:A:507:HOH:O	2.21	0.41
1:C:311:PRO:HD2	5:C:715:HOH:O	2.21	0.41
1:C:158:ILE:O	1:C:178:PHE:HB2	2.21	0.41
1:B:220:GLY:HA3	1:B:251:ASP:O	2.22	0.40
1:D:227:ALA:CB	1:D:262:TRP:CZ3	3.04	0.40
1:A:72:LYS:HB3	1:A:72:LYS:HE3	1.91	0.40
1:D:187:ARG:HH11	1:D:187:ARG:HD3	1.68	0.40
2:C:401:PRP:H4	5:C:793:HOH:O	2.22	0.40

There are no symmetry-related clashes.

5.3 Torsion angles [i](#)

5.3.1 Protein backbone [i](#)

In the following table, the Percentiles column shows the percent Ramachandran outliers of the chain as a percentile score with respect to all X-ray entries followed by that with respect to entries of similar resolution.

The Analysed column shows the number of residues for which the backbone conformation was analysed, and the total number of residues.

Mol	Chain	Analysed	Favoured	Allowed	Outliers	Percentiles	
1	A	332/377 (88%)	327 (98%)	4 (1%)	1 (0%)	46	29
1	B	333/377 (88%)	327 (98%)	5 (2%)	1 (0%)	46	29
1	C	333/377 (88%)	327 (98%)	5 (2%)	1 (0%)	46	29
1	D	332/377 (88%)	325 (98%)	6 (2%)	1 (0%)	46	29
All	All	1330/1508 (88%)	1306 (98%)	20 (2%)	4 (0%)	46	29

All (4) Ramachandran outliers are listed below:

Mol	Chain	Res	Type
1	A	73	ALA
1	B	73	ALA
1	C	73	ALA
1	D	73	ALA

5.3.2 Protein sidechains [i](#)

In the following table, the Percentiles column shows the percent sidechain outliers of the chain as a percentile score with respect to all X-ray entries followed by that with respect to entries of similar resolution.

The Analysed column shows the number of residues for which the sidechain conformation was analysed, and the total number of residues.

Mol	Chain	Analysed	Rotameric	Outliers	Percentiles	
1	A	237/264 (90%)	237 (100%)	0	100	100
1	B	238/264 (90%)	238 (100%)	0	100	100
1	C	237/264 (90%)	237 (100%)	0	100	100
1	D	237/264 (90%)	237 (100%)	0	100	100
All	All	949/1056 (90%)	949 (100%)	0	100	100

There are no protein residues with a non-rotameric sidechain to report.

Some sidechains can be flipped to improve hydrogen bonding and reduce clashes. All (9) such sidechains are listed below:

Mol	Chain	Res	Type
1	A	56	ASN
1	A	117	ASN
1	A	203	ASN
1	B	203	ASN
1	B	285	GLN
1	C	56	ASN
1	C	114	ASN
1	C	203	ASN
1	D	203	ASN

5.3.3 RNA [i](#)

There are no RNA molecules in this entry.

5.4 Non-standard residues in protein, DNA, RNA chains [i](#)

There are no non-standard protein/DNA/RNA residues in this entry.

5.5 Carbohydrates [i](#)

There are no carbohydrates in this entry.

5.6 Ligand geometry [i](#)

Of 18 ligands modelled in this entry, 8 are monoatomic - leaving 10 for Mogul analysis.

In the following table, the Counts columns list the number of bonds (or angles) for which Mogul statistics could be retrieved, the number of bonds (or angles) that are observed in the model and the number of bonds (or angles) that are defined in the chemical component dictionary. The Link column lists molecule types, if any, to which the group is linked. The Z score for a bond length (or angle) is the number of standard deviations the observed value is removed from the expected value. A bond length (or angle) with $|Z| > 2$ is considered an outlier worth inspection. RMSZ is the root-mean-square of all Z scores of the bond lengths (or angles).

Mol	Type	Chain	Res	Link	Bond lengths			Bond angles		
					Counts	RMSZ	$\# Z > 2$	Counts	RMSZ	$\# Z > 2$
2	PRP	A	401	3	19,22,22	1.44	2 (10%)	31,35,35	1.54	5 (16%)

Mol	Type	Chain	Res	Link	Bond lengths			Bond angles		
					Counts	RMSZ	# Z > 2	Counts	RMSZ	# Z > 2
4	14B	A	404	-	9,12,12	0.71	0	11,17,17	1.10	0
2	PRP	B	401	3	19,22,22	1.82	5 (26%)	31,35,35	1.78	9 (29%)
4	14B	B	404	-	9,12,12	0.64	0	11,17,17	1.34	2 (18%)
4	14B	B	405	-	9,12,12	0.71	0	11,17,17	1.08	0
2	PRP	C	401	3	19,22,22	1.84	6 (31%)	31,35,35	1.79	8 (25%)
4	14B	C	404	-	9,12,12	0.66	0	11,17,17	1.43	2 (18%)
4	14B	C	405	-	9,12,12	0.67	0	11,17,17	1.06	1 (9%)
2	PRP	D	401	3	19,22,22	1.58	4 (21%)	31,35,35	1.43	7 (22%)
4	14B	D	402	-	9,12,12	0.90	0	11,17,17	0.95	0

In the following table, the Chirals column lists the number of chiral outliers, the number of chiral centers analysed, the number of these observed in the model and the number defined in the chemical component dictionary. Similar counts are reported in the Torsion and Rings columns. '-' means no outliers of that kind were identified.

Mol	Type	Chain	Res	Link	Chirals	Torsions	Rings
2	PRP	A	401	3	-	0/16/33/33	0/1/1/1
4	14B	A	404	-	-	0/0/4/4	0/1/1/1
2	PRP	B	401	3	-	0/16/33/33	0/1/1/1
4	14B	B	404	-	-	0/0/4/4	0/1/1/1
4	14B	B	405	-	-	0/0/4/4	0/1/1/1
2	PRP	C	401	3	-	0/16/33/33	0/1/1/1
4	14B	C	404	-	-	0/0/4/4	0/1/1/1
4	14B	C	405	-	-	0/0/4/4	0/1/1/1
2	PRP	D	401	3	-	0/16/33/33	0/1/1/1
4	14B	D	402	-	-	0/0/4/4	0/1/1/1

All (17) bond length outliers are listed below:

Mol	Chain	Res	Type	Atoms	Z	Observed(Å)	Ideal(Å)
2	C	401	PRP	PB-O3B	-2.19	1.46	1.54
2	C	401	PRP	PB-O2B	2.11	1.62	1.54
2	D	401	PRP	O4-C1	2.21	1.45	1.41
2	B	401	PRP	P-O2P	2.22	1.62	1.54
2	D	401	PRP	PA-O1A	2.23	1.59	1.51
2	D	401	PRP	PB-O2B	2.34	1.63	1.54
2	A	401	PRP	C1-C2	2.41	1.56	1.52
2	C	401	PRP	C1-C2	2.63	1.56	1.52
2	C	401	PRP	PA-O1A	2.74	1.61	1.51
2	B	401	PRP	C1-C2	2.88	1.56	1.52
2	C	401	PRP	O4-C1	3.18	1.47	1.41

Continued on next page...

Continued from previous page...

Mol	Chain	Res	Type	Atoms	Z	Observed(Å)	Ideal(Å)
2	A	401	PRP	P-O1P	3.22	1.61	1.51
2	B	401	PRP	PA-O1A	3.30	1.63	1.51
2	B	401	PRP	P-O1P	3.33	1.62	1.51
2	D	401	PRP	P-O1P	3.35	1.62	1.51
2	C	401	PRP	P-O1P	3.39	1.62	1.51
2	B	401	PRP	O4-C1	4.16	1.49	1.41

All (34) bond angle outliers are listed below:

Mol	Chain	Res	Type	Atoms	Z	Observed(°)	Ideal(°)
2	C	401	PRP	C5-C4-C3	-3.97	99.45	115.21
2	B	401	PRP	C5-C4-C3	-3.47	101.44	115.21
2	D	401	PRP	O2P-P-O1P	-2.71	101.84	110.58
2	A	401	PRP	PA-O3A-PB	-2.70	123.60	132.67
2	C	401	PRP	O2P-P-O1P	-2.68	101.95	110.58
2	B	401	PRP	C2-C3-C4	-2.68	97.10	102.61
2	C	401	PRP	O2B-PB-O1B	-2.64	102.09	110.58
2	C	401	PRP	C1-C2-C3	-2.50	99.09	102.45
2	D	401	PRP	C5-C4-C3	-2.42	105.61	115.21
2	B	401	PRP	O2P-P-O1P	-2.27	103.28	110.58
4	B	404	14B	CAL-CAG-CAI	-2.26	118.54	121.74
2	D	401	PRP	PA-O3A-PB	-2.16	125.41	132.67
2	B	401	PRP	O4-C4-C3	-2.10	100.91	105.15
2	A	401	PRP	C2-C3-C4	-2.07	98.37	102.61
2	C	401	PRP	O4-C4-C3	-2.03	101.05	105.15
2	B	401	PRP	C1-C2-C3	-2.02	99.73	102.45
4	C	404	14B	CAL-CAG-CAI	-2.00	118.89	121.74
2	B	401	PRP	O3B-PB-O3A	2.05	114.40	105.09
4	C	405	14B	CAF-CAJ-CAK	2.10	119.97	118.84
2	C	401	PRP	O3P-P-O2P	2.12	115.44	107.38
2	D	401	PRP	O3B-PB-O2B	2.15	115.58	107.38
2	D	401	PRP	O2P-P-O5	2.17	112.80	106.56
4	B	404	14B	CAG-CAI-CAF	2.19	120.88	118.08
2	D	401	PRP	O3P-P-O5	2.34	113.30	106.56
4	C	404	14B	CAG-CAI-CAF	2.59	121.39	118.08
2	A	401	PRP	O5-P-O1P	2.61	113.79	107.14
2	A	401	PRP	O3B-PB-O3A	2.90	118.23	105.09
2	C	401	PRP	O4-C4-C5	3.48	121.78	109.32
2	B	401	PRP	O1-C1-C2	3.51	112.94	106.67
2	B	401	PRP	O4-C4-C5	3.67	122.44	109.32
2	D	401	PRP	O1-C1-C2	3.68	113.23	106.67
2	C	401	PRP	O4-C1-O1	4.09	117.34	108.90

Continued on next page...

Continued from previous page...

Mol	Chain	Res	Type	Atoms	Z	Observed(°)	Ideal(°)
2	B	401	PRP	O4-C1-O1	4.12	117.41	108.90
2	A	401	PRP	O1-C1-C2	4.80	115.24	106.67

There are no chirality outliers.

There are no torsion outliers.

There are no ring outliers.

9 monomers are involved in 26 short contacts:

Mol	Chain	Res	Type	Clashes	Symm-Clashes
2	A	401	PRP	4	0
4	A	404	14B	1	0
2	B	401	PRP	7	0
4	B	404	14B	1	0
4	B	405	14B	3	0
2	C	401	PRP	3	0
4	C	405	14B	4	0
2	D	401	PRP	2	0
4	D	402	14B	1	0

5.7 Other polymers [i](#)

There are no such residues in this entry.

5.8 Polymer linkage issues [i](#)

There are no chain breaks in this entry.

6 Fit of model and data [i](#)

6.1 Protein, DNA and RNA chains [i](#)

In the following table, the column labelled ‘#RSRZ> 2’ contains the number (and percentage) of RSRZ outliers, followed by percent RSRZ outliers for the chain as percentile scores relative to all X-ray entries and entries of similar resolution. The OWAB column contains the minimum, median, 95th percentile and maximum values of the occupancy-weighted average B-factor per residue. The column labelled ‘Q< 0.9’ lists the number of (and percentage) of residues with an average occupancy less than 0.9.

Mol	Chain	Analysed	<RSRZ>	#RSRZ>2	OWAB(Å ²)	Q<0.9
1	A	338/377 (89%)	-0.10	4 (1%) 81 78	9, 20, 34, 46	0
1	B	339/377 (89%)	-0.29	1 (0%) 94 92	9, 17, 27, 42	0
1	C	339/377 (89%)	-0.31	3 (0%) 85 84	9, 16, 27, 42	0
1	D	338/377 (89%)	-0.08	6 (1%) 71 67	11, 20, 36, 47	0
All	All	1354/1508 (89%)	-0.20	14 (1%) 84 82	9, 18, 32, 47	0

All (14) RSRZ outliers are listed below:

Mol	Chain	Res	Type	RSRZ
1	D	370	ILE	4.8
1	D	140	ALA	3.9
1	A	370	ILE	3.9
1	D	114	ASN	3.5
1	D	277	ALA	3.2
1	B	114	ASN	2.7
1	C	370	ILE	2.6
1	C	114	ASN	2.3
1	D	294	ALA	2.3
1	D	113	VAL	2.3
1	C	335	GLU	2.1
1	A	112	GLY	2.1
1	A	140	ALA	2.0
1	A	369	GLN	2.0

6.2 Non-standard residues in protein, DNA, RNA chains [i](#)

There are no non-standard protein/DNA/RNA residues in this entry.

6.3 Carbohydrates [i](#)

There are no carbohydrates in this entry.

6.4 Ligands [i](#)

In the following table, the Atoms column lists the number of modelled atoms in the group and the number defined in the chemical component dictionary. LLDF column lists the quality of electron density of the group with respect to its neighbouring residues in protein, DNA or RNA chains. The B-factors column lists the minimum, median, 95th percentile and maximum values of B factors of atoms in the group. The column labelled 'Q< 0.9' lists the number of atoms with occupancy less than 0.9.

Mol	Type	Chain	Res	Atoms	RSCC	RSR	LLDF	B-factors(Å ²)	Q<0.9
4	14B	B	405	12/12	0.70	0.29	8.68	23,27,32,33	12
4	14B	C	405	12/12	0.74	0.26	4.91	19,25,31,33	12
4	14B	D	402	12/12	0.85	0.19	4.44	30,30,32,33	0
4	14B	B	404	12/12	0.86	0.17	3.36	29,32,35,37	0
2	PRP	C	401	22/22	0.97	0.14	1.94	5,16,24,26	13
4	14B	A	404	12/12	0.85	0.14	1.91	25,26,28,29	0
2	PRP	B	401	22/22	0.97	0.13	1.62	6,16,22,24	13
4	14B	C	404	12/12	0.89	0.12	1.37	32,33,35,37	0
2	PRP	A	401	22/22	0.97	0.13	0.96	13,23,29,30	13
2	PRP	D	401	22/22	0.97	0.14	0.79	14,24,33,34	13
3	MG	B	403	1/1	0.96	0.06	-	23,23,23,23	0
3	MG	C	403	1/1	0.93	0.06	-	23,23,23,23	0
3	MG	D	403	1/1	0.91	0.07	-	19,19,19,19	0
3	MG	D	404	1/1	0.96	0.07	-	26,26,26,26	0
3	MG	A	403	1/1	0.97	0.05	-	29,29,29,29	0
3	MG	B	402	1/1	0.99	0.12	-	18,18,18,18	0
3	MG	A	402	1/1	0.99	0.05	-	18,18,18,18	0
3	MG	C	402	1/1	0.94	0.09	-	14,14,14,14	0

6.5 Other polymers [i](#)

There are no such residues in this entry.