



# Full wwPDB X-ray Structure Validation Report ⓘ

Jan 31, 2016 – 10:43 PM GMT

PDB ID : 1UYK  
Title : HUMAN HSP90-ALPHA WITH 8-BENZO[1,3]DIOXOL-5-YLMETHYL-9-BUT YL-2-FLUORO-9H-PURIN-6-YLAMINE  
Authors : Wright, L.; Barril, X.; Dymock, B.; Sheridan, L.; Surgenor, A.; Beswick, M.; Drysdale, M.; Collier, A.; Massey, A.; Davies, N.; Fink, A.; Fromont, C.; Aherne, W.; Boxall, K.; Sharp, S.; Workman, P.; Hubbard, R.E.  
Deposited on : 2004-03-02  
Resolution : 2.20 Å(reported)

This is a Full wwPDB X-ray Structure Validation Report for a publicly released PDB entry.  
We welcome your comments at [validation@mail.wwpdb.org](mailto:validation@mail.wwpdb.org)  
A user guide is available at  
<http://wwpdb.org/validation/2016/XrayValidationReportHelp>  
with specific help available everywhere you see the ⓘ symbol.

---

The following versions of software and data (see [references ⓘ](#)) were used in the production of this report:

MolProbity : 4.02b-467  
Mogul : 1.7 (RC4), CSD as536be (2015)  
Xtriage (Phenix) : 1.9-1692  
EDS : rb-20026688  
Percentile statistics : 20151230.v01 (using entries in the PDB archive December 30th 2015)  
Refmac : 5.8.0135  
CCP4 : 6.5.0  
Ideal geometry (proteins) : Engh & Huber (2001)  
Ideal geometry (DNA, RNA) : Parkinson et al. (1996)  
Validation Pipeline (wwPDB-VP) : trunk26865

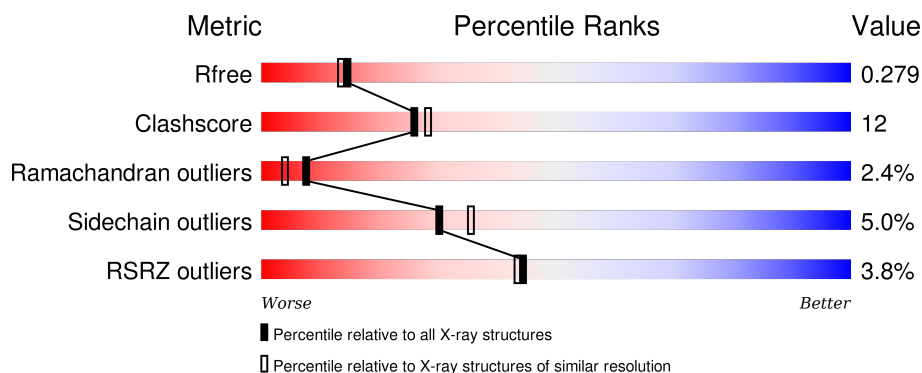
# 1 Overall quality at a glance

The following experimental techniques were used to determine the structure:

## *X-RAY DIFFRACTION*

The reported resolution of this entry is 2.20 Å.

Percentile scores (ranging between 0-100) for global validation metrics of the entry are shown in the following graphic. The table shows the number of entries on which the scores are based.



Metric	Whole archive (#Entries)	Similar resolution (#Entries, resolution range(Å))
$R_{free}$	91344	3774 (2.20-2.20)
Clashscore	102246	4477 (2.20-2.20)
Ramachandran outliers	100387	4404 (2.20-2.20)
Sidechain outliers	100360	4405 (2.20-2.20)
RSRZ outliers	91569	3781 (2.20-2.20)

The table below summarises the geometric issues observed across the polymeric chains and their fit to the electron density. The red, orange, yellow and green segments on the lower bar indicate the fraction of residues that contain outliers for  $\geq 3$ , 2, 1 and 0 types of geometric quality criteria. A grey segment represents the fraction of residues that are not modelled. The numeric value for each fraction is indicated below the corresponding segment, with a dot representing fractions  $\leq 5\%$ . The upper red bar (where present) indicates the fraction of residues that have poor fit to the electron density. The numeric value is given above the bar.

Mol	Chain	Length	Quality of chain
1	A	236	

The following table lists non-polymeric compounds, carbohydrate monomers and non-standard residues in protein, DNA, RNA chains that are outliers for geometric or electron-density-fit criteria:

Mol	Type	Chain	Res	Chirality	Geometry	Clashes	Electron density
2	PUX	A	1224	-	-	-	X

## 2 Entry composition [i](#)

There are 3 unique types of molecules in this entry. The entry contains 1816 atoms, of which 0 are hydrogens and 0 are deuteriums.

In the tables below, the ZeroOcc column contains the number of atoms modelled with zero occupancy, the AltConf column contains the number of residues with at least one atom in alternate conformation and the Trace column contains the number of residues modelled with at most 2 atoms.

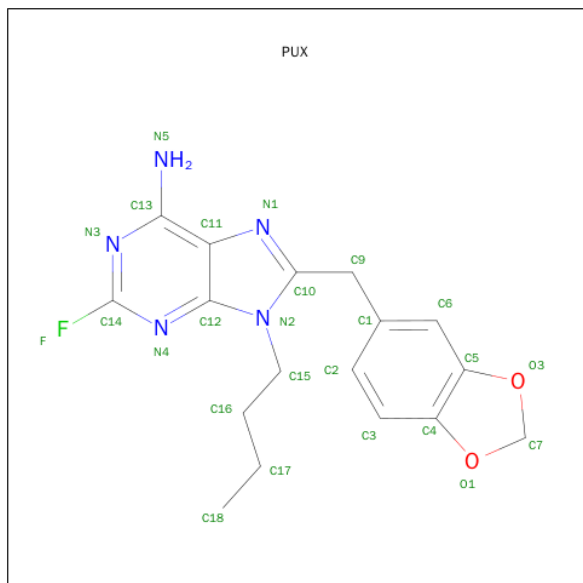
- Molecule 1 is a protein called HEAT SHOCK PROTEIN HSP 90-ALPHA.

Mol	Chain	Residues	Atoms					ZeroOcc	AltConf	Trace
1	A	209	Total	C	N	O	S	0	1	1
			1637	1039	270	323	5			

There is a discrepancy between the modelled and reference sequences:

Chain	Residue	Modelled	Actual	Comment	Reference
A	63	SER	THR	CONFLICT	UNP P07900

- Molecule 2 is 8-BENZO[1,3]DIOXOL-5-YLMETHYL-9-BUTYL-2-FLUORO-9H-PURIN-6-YLAMINE (three-letter code: PUX) (formula: C<sub>17</sub>H<sub>18</sub>FN<sub>5</sub>O<sub>2</sub>).



Mol	Chain	Residues	Atoms					ZeroOcc	AltConf
2	A	1	Total	C	F	N	O	0	0
			25	17	1	5	2		

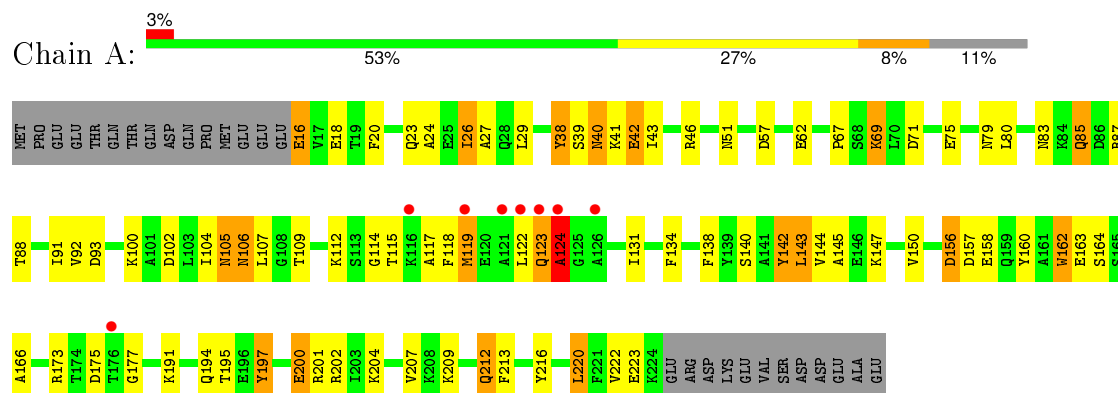
- Molecule 3 is water.

Mol	Chain	Residues	Atoms		ZeroOcc	AltConf
3	A	154	Total 154	O 154	0	0

### 3 Residue-property plots

These plots are drawn for all protein, RNA and DNA chains in the entry. The first graphic for a chain summarises the proportions of errors displayed in the second graphic. The second graphic shows the sequence view annotated by issues in geometry and electron density. Residues are color-coded according to the number of geometric quality criteria for which they contain at least one outlier: green = 0, yellow = 1, orange = 2 and red = 3 or more. A red dot above a residue indicates a poor fit to the electron density ( $RSRZ > 2$ ). Stretches of 2 or more consecutive residues without any outlier are shown as a green connector. Residues present in the sample, but not in the model, are shown in grey.

- Molecule 1: HEAT SHOCK PROTEIN HSP 90-ALPHA



## 4 Data and refinement statistics

Property	Value	Source
Space group	I 2 2 2	Depositor
Cell constants a, b, c, $\alpha$ , $\beta$ , $\gamma$	66.84Å 90.66Å 98.68Å 90.00° 90.00° 90.00°	Depositor
Resolution (Å)	67.42 – 2.20 29.88 – 2.60	Depositor EDS
% Data completeness (in resolution range)	94.2 (67.42-2.20) 66.5 (29.88-2.60)	Depositor EDS
$R_{merge}$	0.07	Depositor
$R_{sym}$	(Not available)	Depositor
$\langle I/\sigma(I) \rangle$ <sup>1</sup>	1.22 (at 2.61Å)	Xtriage
Refinement program	REFMAC	Depositor
R, $R_{free}$	0.183 , 0.218 0.210 , 0.279	Depositor DCC
$R_{free}$ test set	304 reflections (5.03%)	DCC
Wilson B-factor (Å <sup>2</sup> )	53.1	Xtriage
Anisotropy	0.656	Xtriage
Bulk solvent $k_{sol}$ (e/Å <sup>3</sup> ), $B_{sol}$ (Å <sup>2</sup> )	0.32 , 47.0	EDS
Estimated twinning fraction	No twinning to report.	Xtriage
L-test for twinning <sup>2</sup>	$\langle  L  \rangle = 0.50$ , $\langle L^2 \rangle = 0.33$	Xtriage
Outliers	2 of 12207 reflections (0.016%)	Xtriage
$F_o, F_c$ correlation	0.95	EDS
Total number of atoms	1816	wwPDB-VP
Average B, all atoms (Å <sup>2</sup> )	60.0	wwPDB-VP

Xtriage's analysis on translational NCS is as follows: *The largest off-origin peak in the Patterson function is 8.28% of the height of the origin peak. No significant pseudotranslation is detected.*

<sup>1</sup>Intensities estimated from amplitudes.

<sup>2</sup>Theoretical values of  $\langle |L| \rangle$ ,  $\langle L^2 \rangle$  for acentric reflections are 0.5, 0.375 respectively for untwinned datasets, and 0.333, 0.2 for perfectly twinned datasets.

## 5 Model quality

### 5.1 Standard geometry

Bond lengths and bond angles in the following residue types are not validated in this section: PUX

The Z score for a bond length (or angle) is the number of standard deviations the observed value is removed from the expected value. A bond length (or angle) with  $|Z| > 5$  is considered an outlier worth inspection. RMSZ is the root-mean-square of all Z scores of the bond lengths (or angles).

Mol	Chain	Bond lengths		Bond angles	
		RMSZ	$\# Z  > 5$	RMSZ	$\# Z  > 5$
1	A	1.86	32/1670 (1.9%)	1.67	24/2253 (1.1%)

All (32) bond length outliers are listed below:

Mol	Chain	Res	Type	Atoms	Z	Observed(Å)	Ideal(Å)
1	A	24	ALA	CA-CB	-9.40	1.32	1.52
1	A	213	PHE	CE2-CZ	8.97	1.54	1.37
1	A	150	VAL	CB-CG1	8.72	1.71	1.52
1	A	213	PHE	CD1-CE1	7.98	1.55	1.39
1	A	134	PHE	CE1-CZ	7.80	1.52	1.37
1	A	213	PHE	CD2-CE2	7.72	1.54	1.39
1	A	158	GLU	CD-OE2	7.44	1.33	1.25
1	A	27	ALA	CA-CB	-7.00	1.37	1.52
1	A	160	TYR	CD1-CE1	6.63	1.49	1.39
1	A	216	TYR	CB-CG	6.48	1.61	1.51
1	A	26	ILE	CB-CG2	-6.24	1.33	1.52
1	A	216	TYR	CG-CD1	6.15	1.47	1.39
1	A	119	MET	SD-CE	6.06	2.11	1.77
1	A	124	ALA	CA-CB	5.96	1.65	1.52
1	A	145	ALA	CA-CB	-5.85	1.40	1.52
1	A	134	PHE	CG-CD2	5.83	1.47	1.38
1	A	119	MET	CG-SD	-5.76	1.66	1.81
1	A	222	VAL	CB-CG1	-5.71	1.40	1.52
1	A	197	TYR	CD1-CE1	5.66	1.47	1.39
1	A	138	PHE	CE1-CZ	-5.61	1.26	1.37
1	A	20	PHE	CB-CG	-5.56	1.41	1.51
1	A	69	LYS	CB-CG	5.52	1.67	1.52
1	A	212	GLN	CG-CD	5.46	1.63	1.51
1	A	106	ASN	C-O	-5.42	1.13	1.23
1	A	216	TYR	CD1-CE1	-5.36	1.31	1.39
1	A	200	GLU	CD-OE1	5.35	1.31	1.25

*Continued on next page...*

*Continued from previous page...*

Mol	Chain	Res	Type	Atoms	Z	Observed(Å)	Ideal(Å)
1	A	88	THR	CA-CB	5.34	1.67	1.53
1	A	18	GLU	CD-OE2	-5.31	1.19	1.25
1	A	134	PHE	CE2-CZ	5.17	1.47	1.37
1	A	42	GLU	CA-C	5.12	1.66	1.52
1	A	142	TYR	CE1-CZ	5.08	1.45	1.38
1	A	38	TYR	CD2-CE2	-5.01	1.31	1.39

All (24) bond angle outliers are listed below:

Mol	Chain	Res	Type	Atoms	Z	Observed(°)	Ideal(°)
1	A	57	ASP	CB-CG-OD2	-10.34	109.00	118.30
1	A	46	ARG	NE-CZ-NH1	9.43	125.02	120.30
1	A	57	ASP	CB-CG-OD1	9.31	126.68	118.30
1	A	157	ASP	CB-CG-OD2	8.85	126.26	118.30
1	A	102	ASP	CB-CG-OD2	8.66	126.10	118.30
1	A	156	ASP	CB-CG-OD2	8.47	125.92	118.30
1	A	46	ARG	NE-CZ-NH2	-8.34	116.13	120.30
1	A	107	LEU	CB-CG-CD2	8.15	124.86	111.00
1	A	223	GLU	O-C-N	-7.99	109.91	122.70
1	A	80	LEU	CB-CG-CD2	-7.87	97.62	111.00
1	A	93	ASP	CB-CG-OD1	7.29	124.86	118.30
1	A	156	ASP	CB-CG-OD1	-6.55	112.40	118.30
1	A	122	LEU	CA-CB-CG	6.27	129.72	115.30
1	A	166	ALA	C-N-CA	-6.21	109.25	122.30
1	A	175	ASP	CB-CG-OD2	6.20	123.88	118.30
1	A	88	THR	OG1-CB-CG2	-6.05	96.09	110.00
1	A	71	ASP	CB-CG-OD2	5.83	123.55	118.30
1	A	220	LEU	CB-CG-CD2	-5.58	101.50	111.00
1	A	46	ARG	CG-CD-NE	-5.44	100.38	111.80
1	A	143	LEU	CB-CG-CD1	5.42	120.21	111.00
1	A	162	TRP	CA-CB-CG	5.38	123.93	113.70
1	A	209	LYS	CD-CE-NZ	-5.31	99.50	111.70
1	A	93	ASP	OD1-CG-OD2	-5.21	113.40	123.30
1	A	109	THR	OG1-CB-CG2	-5.06	98.36	110.00

There are no chirality outliers.

There are no planarity outliers.



## 5.2 Too-close contacts ⓘ

In the following table, the Non-H and H(model) columns list the number of non-hydrogen atoms and hydrogen atoms in the chain respectively. The H(added) column lists the number of hydrogen atoms added and optimized by MolProbity. The Clashes column lists the number of clashes within the asymmetric unit, whereas Symm-Clashes lists symmetry related clashes.

Mol	Chain	Non-H	H(model)	H(added)	Clashes	Symm-Clashes
1	A	1637	0	1633	40	0
2	A	25	0	18	2	0
3	A	154	0	0	8	1
All	All	1816	0	1651	41	1

The all-atom clashscore is defined as the number of clashes found per 1000 atoms (including hydrogen atoms). The all-atom clashscore for this structure is 12.

All (41) close contacts within the same asymmetric unit are listed below, sorted by their clash magnitude.

Atom-1	Atom-2	Interatomic distance (Å)	Clash overlap (Å)
1:A:119:MET:CE	1:A:119:MET:SD	2.11	1.37
2:A:1224:PUX:F	2:A:1224:PUX:C14	1.67	1.32
1:A:212:GLN:HG3	3:A:2136:HOH:O	1.63	0.98
1:A:117:ALA:O	3:A:2072:HOH:O	1.93	0.85
1:A:16:GLU:HG3	1:A:16:GLU:O	1.87	0.72
1:A:106:ASN:ND2	3:A:2068:HOH:O	2.01	0.72
1:A:87:ARG:HD3	1:A:195:THR:HG22	1.71	0.72
1:A:100:LYS:HE2	1:A:104:ILE:HD11	1.74	0.69
1:A:173:ARG:HD2	3:A:2107:HOH:O	1.94	0.68
1:A:100:LYS:HG2	1:A:104:ILE:HD12	1.78	0.64
1:A:51:ASN:ND2	2:A:1224:PUX:H9C1	2.15	0.62
1:A:123:GLN:O	1:A:124:ALA:CB	2.51	0.57
1:A:144:VAL:O	1:A:191:LYS:HG3	2.03	0.57
1:A:100:LYS:HE2	1:A:104:ILE:CD1	2.34	0.57
1:A:119:MET:CG	1:A:119:MET:CE	2.82	0.57
1:A:39:SER:O	1:A:41:LYS:N	2.37	0.57
1:A:142:TYR:OH	1:A:164:SER:HB3	2.07	0.55
1:A:194:GLN:HE21	1:A:197:TYR:HE2	1.55	0.54
1:A:200:GLU:OE2	1:A:204:LYS:NZ	2.36	0.54
1:A:91:ILE:N	1:A:91:ILE:HD12	2.23	0.53
1:A:23:GLN:HB2	1:A:26:ILE:HG12	1.93	0.50
1:A:204:LYS:HE2	3:A:2062:HOH:O	2.12	0.48
1:A:147:LYS:HD2	1:A:163:GLU:OE2	2.13	0.48
1:A:62:GLU:HB3	1:A:69:LYS:HD3	1.95	0.47

*Continued on next page...*

Continued from previous page...

Atom-1	Atom-2	Interatomic distance (Å)	Clash overlap (Å)
1:A:140:SER:O	1:A:143:LEU:HB2	2.14	0.47
1:A:201:ARG:HG2	3:A:2126:HOH:O	2.14	0.47
1:A:38:TYR:CZ	1:A:40:ASN:HB3	2.51	0.46
1:A:43:ILE:C	1:A:43:ILE:HD12	2.37	0.45
1:A:83:ASN:OD1	1:A:85:GLN:HG2	2.17	0.45
1:A:147:LYS:CE	1:A:163:GLU:OE2	2.66	0.44
1:A:118:PHE:CZ	1:A:131:ILE:HB	2.52	0.44
1:A:79:ASN:HB2	1:A:92:VAL:HB	2.00	0.43
1:A:115:THR:O	1:A:119:MET:HB2	2.18	0.43
1:A:191:LYS:HE2	3:A:2081:HOH:O	2.19	0.42
1:A:29:LEU:HD11	1:A:118:PHE:CD2	2.54	0.42
1:A:38:TYR:HE2	1:A:40:ASN:O	2.04	0.41
1:A:156:ASP:HA	3:A:2091:HOH:O	2.19	0.41
1:A:123:GLN:O	1:A:124:ALA:HB3	2.20	0.41
1:A:104:ILE:HG22	1:A:105:ASN:HD22	1.86	0.40

All (1) symmetry-related close contacts are listed below. The label for Atom-2 includes the symmetry operator and encoded unit-cell translations to be applied.

Atom-1	Atom-2	Interatomic distance (Å)	Clash overlap (Å)
3:A:2026:HOH:O	3:A:2031:HOH:O[2_555]	2.15	0.05

## 5.3 Torsion angles [i](#)

### 5.3.1 Protein backbone [i](#)

In the following table, the Percentiles column shows the percent Ramachandran outliers of the chain as a percentile score with respect to all X-ray entries followed by that with respect to entries of similar resolution.

The Analysed column shows the number of residues for which the backbone conformation was analysed, and the total number of residues.

Mol	Chain	Analysed	Favoured	Allowed	Outliers	Percentiles
1	A	208/236 (88%)	188 (90%)	15 (7%)	5 (2%)	<b>7</b> <b>4</b>

All (5) Ramachandran outliers are listed below:

Mol	Chain	Res	Type
1	A	40	ASN

Continued on next page...

*Continued from previous page...*

Mol	Chain	Res	Type
1	A	42	GLU
1	A	124	ALA
1	A	177	GLY
1	A	114	GLY

### 5.3.2 Protein sidechains ⓘ

In the following table, the Percentiles column shows the percent sidechain outliers of the chain as a percentile score with respect to all X-ray entries followed by that with respect to entries of similar resolution.

The Analysed column shows the number of residues for which the sidechain conformation was analysed, and the total number of residues.

Mol	Chain	Analysed	Rotameric	Outliers	Percentiles
1	A	180/206 (87%)	171 (95%)	9 (5%)	30 35

All (9) residues with a non-rotameric sidechain are listed below:

Mol	Chain	Res	Type
1	A	16	GLU
1	A	67	PRO
1	A	75	GLU
1	A	85	GLN
1	A	105	ASN
1	A	112	LYS
1	A	123	GLN
1	A	162	TRP
1	A	202	ARG

Some sidechains can be flipped to improve hydrogen bonding and reduce clashes. All (5) such sidechains are listed below:

Mol	Chain	Res	Type
1	A	40	ASN
1	A	51	ASN
1	A	79	ASN
1	A	105	ASN
1	A	194	GLN

### 5.3.3 RNA ⓘ

There are no RNA molecules in this entry.

## 5.4 Non-standard residues in protein, DNA, RNA chains ⓘ

There are no non-standard protein/DNA/RNA residues in this entry.

## 5.5 Carbohydrates ⓘ

There are no carbohydrates in this entry.

## 5.6 Ligand geometry ⓘ

1 ligand is modelled in this entry.

In the following table, the Counts columns list the number of bonds (or angles) for which Mogul statistics could be retrieved, the number of bonds (or angles) that are observed in the model and the number of bonds (or angles) that are defined in the chemical component dictionary. The Link column lists molecule types, if any, to which the group is linked. The Z score for a bond length (or angle) is the number of standard deviations the observed value is removed from the expected value. A bond length (or angle) with  $|Z| > 2$  is considered an outlier worth inspection. RMSZ is the root-mean-square of all Z scores of the bond lengths (or angles).

Mol	Type	Chain	Res	Link	Bond lengths			Bond angles		
					Counts	RMSZ	# $ Z  > 2$	Counts	RMSZ	# $ Z  > 2$
2	PUX	A	1224	-	24,28,28	3.24	9 (37%)	25,40,40	5.99	14 (56%)

In the following table, the Chirals column lists the number of chiral outliers, the number of chiral centers analysed, the number of these observed in the model and the number defined in the chemical component dictionary. Similar counts are reported in the Torsion and Rings columns. '-' means no outliers of that kind were identified.

Mol	Type	Chain	Res	Link	Chirals	Torsions	Rings
2	PUX	A	1224	-	-	0/8/14/14	0/4/4/4

All (9) bond length outliers are listed below:

Mol	Chain	Res	Type	Atoms	Z	Observed(Å)	Ideal(Å)
2	A	1224	PUX	O1-C4	-3.21	1.33	1.38
2	A	1224	PUX	C11-N1	-2.18	1.35	1.38
2	A	1224	PUX	C12-N4	2.36	1.39	1.35
2	A	1224	PUX	C13-N3	2.64	1.39	1.33

*Continued on next page...*

*Continued from previous page...*

Mol	Chain	Res	Type	Atoms	Z	Observed(Å)	Ideal(Å)
2	A	1224	PUX	C3-C2	3.13	1.44	1.38
2	A	1224	PUX	C10-N1	3.64	1.41	1.34
2	A	1224	PUX	C14-N4	3.76	1.35	1.31
2	A	1224	PUX	C14-N3	5.25	1.36	1.31
2	A	1224	PUX	F-C14	12.36	1.67	1.34

All (14) bond angle outliers are listed below:

Mol	Chain	Res	Type	Atoms	Z	Observed(°)	Ideal(°)
2	A	1224	PUX	N4-C14-N3	-13.69	113.03	131.11
2	A	1224	PUX	O1-C7-O3	-5.23	99.28	108.12
2	A	1224	PUX	C2-C3-C4	-3.37	113.52	120.03
2	A	1224	PUX	C5-C6-C1	-3.29	115.42	120.15
2	A	1224	PUX	F-C14-N3	-2.58	111.98	114.44
2	A	1224	PUX	O3-C5-C4	-2.52	106.56	109.77
2	A	1224	PUX	C2-C1-C6	2.01	121.52	118.55
2	A	1224	PUX	C3-C4-C5	2.01	124.14	121.41
2	A	1224	PUX	C7-O3-C5	4.71	112.13	105.35
2	A	1224	PUX	C14-N3-C13	5.09	128.39	115.03
2	A	1224	PUX	C14-N4-C12	6.04	123.38	114.93
2	A	1224	PUX	C7-O1-C4	6.11	114.14	105.35
2	A	1224	PUX	C16-C15-N2	7.70	118.79	112.29
2	A	1224	PUX	F-C14-N4	21.01	134.46	114.44

There are no chirality outliers.

There are no torsion outliers.

There are no ring outliers.

1 monomer is involved in 2 short contacts:

Mol	Chain	Res	Type	Clashes	Symm-Clashes
2	A	1224	PUX	2	0

## 5.7 Other polymers [i](#)

There are no such residues in this entry.

## 5.8 Polymer linkage issues [i](#)

There are no chain breaks in this entry.

## 6 Fit of model and data [i](#)

### 6.1 Protein, DNA and RNA chains [i](#)

In the following table, the column labelled ‘#RSRZ> 2’ contains the number (and percentage) of RSRZ outliers, followed by percent RSRZ outliers for the chain as percentile scores relative to all X-ray entries and entries of similar resolution. The OWAB column contains the minimum, median, 95<sup>th</sup> percentile and maximum values of the occupancy-weighted average B-factor per residue. The column labelled ‘Q< 0.9’ lists the number of (and percentage) of residues with an average occupancy less than 0.9.

Mol	Chain	Analysed	<RSRZ>	#RSRZ>2		OWAB(Å <sup>2</sup> )	Q<0.9
1	A	209/236 (88%)	0.09	8 (3%)	44 43	45, 58, 76, 90	1 (0%)

All (8) RSRZ outliers are listed below:

Mol	Chain	Res	Type	RSRZ
1	A	123	GLN	2.7
1	A	176	THR	2.6
1	A	124	ALA	2.5
1	A	119	MET	2.3
1	A	122	LEU	2.3
1	A	121	ALA	2.1
1	A	126	ALA	2.1
1	A	116	LYS	2.1

### 6.2 Non-standard residues in protein, DNA, RNA chains [i](#)

There are no non-standard protein/DNA/RNA residues in this entry.

### 6.3 Carbohydrates [i](#)

There are no carbohydrates in this entry.

### 6.4 Ligands [i](#)

In the following table, the Atoms column lists the number of modelled atoms in the group and the number defined in the chemical component dictionary. LLDF column lists the quality of electron density of the group with respect to its neighbouring residues in protein, DNA or RNA chains. The B-factors column lists the minimum, median, 95<sup>th</sup> percentile and maximum values of B factors of atoms in the group. The column labelled ‘Q< 0.9’ lists the number of atoms with occupancy less than 0.9.

Mol	Type	Chain	Res	Atoms	RSCC	RSR	LLDF	B-factors( $\text{\AA}^2$ )	Q<0.9
2	PUX	A	1224	25/25	0.94	0.23	2.24	53,58,61,64	0

## 6.5 Other polymers ⓘ

There are no such residues in this entry.