



Full wwPDB X-ray Structure Validation Report ⓘ

Feb 1, 2016 – 05:50 AM GMT

PDB ID : 2UZB
Title : CRYSTAL STRUCTURE OF HUMAN CDK2 COMPLEXED WITH A THI-AZOLIDINONE INHIBITOR
Authors : Richardson, C.M.; Dokurno, P.; Murray, J.B.; Surgenor, A.E.
Deposited on : 2007-04-27
Resolution : 2.70 Å(reported)

This is a Full wwPDB X-ray Structure Validation Report for a publicly released PDB entry.
We welcome your comments at validation@mail.wwpdb.org
A user guide is available at
<http://wwpdb.org/validation/2016/XrayValidationReportHelp>
with specific help available everywhere you see the ⓘ symbol.

The following versions of software and data (see [references ⓘ](#)) were used in the production of this report:

MolProbity : 4.02b-467
Mogul : 1.7 (RC4), CSD as536be (2015)
Xtriage (Phenix) : 1.9-1692
EDS : rb-20026688
Percentile statistics : 20151230.v01 (using entries in the PDB archive December 30th 2015)
Refmac : 5.8.0135
CCP4 : 6.5.0
Ideal geometry (proteins) : Engh & Huber (2001)
Ideal geometry (DNA, RNA) : Parkinson et al. (1996)
Validation Pipeline (wwPDB-VP) : trunk26865

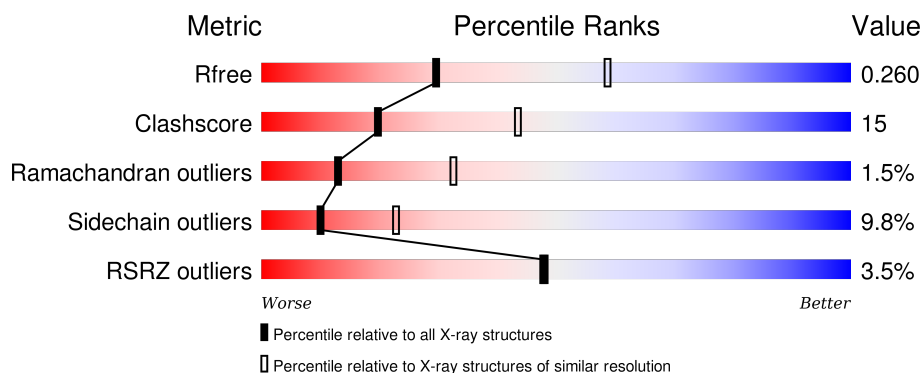
1 Overall quality at a glance

The following experimental techniques were used to determine the structure:

X-RAY DIFFRACTION

The reported resolution of this entry is 2.70 Å.

Percentile scores (ranging between 0-100) for global validation metrics of the entry are shown in the following graphic. The table shows the number of entries on which the scores are based.



Metric	Whole archive (#Entries)	Similar resolution (#Entries, resolution range(Å))
R_{free}	91344	2103 (2.70-2.70)
Clashscore	102246	2422 (2.70-2.70)
Ramachandran outliers	100387	2382 (2.70-2.70)
Sidechain outliers	100360	2382 (2.70-2.70)
RSRZ outliers	91569	2107 (2.70-2.70)

The table below summarises the geometric issues observed across the polymeric chains and their fit to the electron density. The red, orange, yellow and green segments on the lower bar indicate the fraction of residues that contain outliers for ≥ 3 , 2, 1 and 0 types of geometric quality criteria. A grey segment represents the fraction of residues that are not modelled. The numeric value for each fraction is indicated below the corresponding segment, with a dot representing fractions $\leq 5\%$. The upper red bar (where present) indicates the fraction of residues that have poor fit to the electron density. The numeric value is given above the bar.

Mol	Chain	Length	Quality of chain
1	A	298	<div> <div>5%</div> <div>62% 32% 5%</div> </div>
1	C	298	<div> <div>5%</div> <div>62% 30% 7%</div> </div>
2	B	258	<div> <div>%</div> <div>73% 22% 5%</div> </div>
2	D	258	<div> <div>2%</div> <div>72% 24%</div> </div>

2 Entry composition [i](#)

There are 4 unique types of molecules in this entry. The entry contains 9172 atoms, of which 0 are hydrogens and 0 are deuteriums.

In the tables below, the ZeroOcc column contains the number of atoms modelled with zero occupancy, the AltConf column contains the number of residues with at least one atom in alternate conformation and the Trace column contains the number of residues modelled with at most 2 atoms.

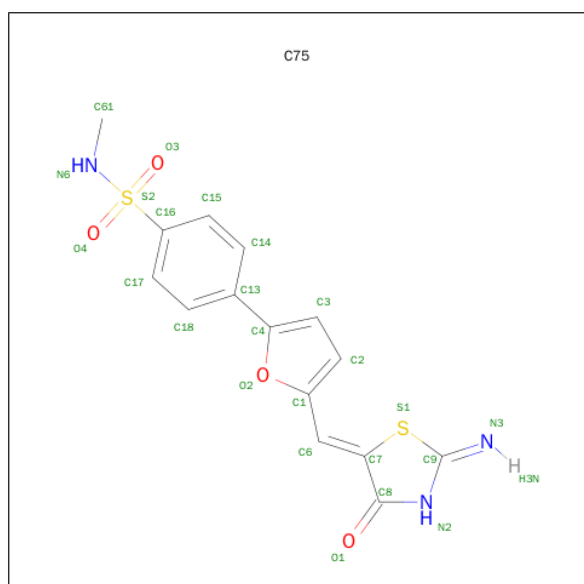
- Molecule 1 is a protein called CELL DIVISION PROTEIN KINASE 2.

Mol	Chain	Residues	Atoms						ZeroOcc	AltConf	Trace
1	A	296	Total	C	N	O	P	S	0	0	0
			2382	1547	403	423	1	8			
1	C	296	Total	C	N	O	P	S	0	13	0
			2382	1547	403	423	1	8			

- Molecule 2 is a protein called CYCLIN-A2.

Mol	Chain	Residues	Atoms					ZeroOcc	AltConf	Trace
2	B	258	Total	C	N	O	S	0	0	0
			2083	1350	339	383	11			
2	D	258	Total	C	N	O	S	0	3	0
			2083	1350	339	383	11			

- Molecule 3 is 4-{5-[(Z)-(2-IMINO-4-OXO-1,3-THIAZOLIDIN-5-YLIDENE)METHYL]-2-FURYL}-N-METHYLBENZENESULFONAMIDE (three-letter code: C75) (formula: C₁₅H₁₃N₃O₄S₂).



Mol	Chain	Residues	Atoms					ZeroOcc	AltConf
3	A	1	Total	C	N	O	S	0	0
			24	15	3	4	2		
3	C	1	Total	C	N	O	S	0	0
			24	15	3	4	2		

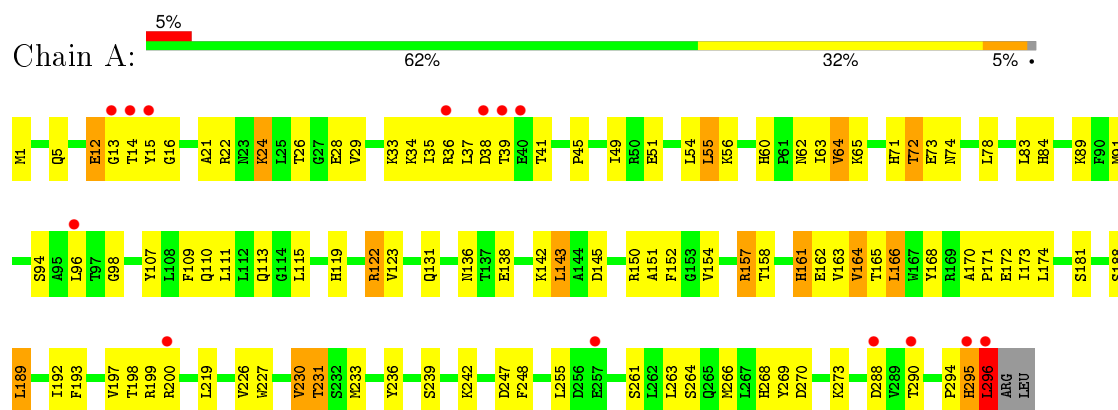
- Molecule 4 is water.

Mol	Chain	Residues	Atoms		ZeroOcc	AltConf
4	A	63	Total	O	0	0
			63	63		
4	B	40	Total	O	0	0
			40	40		
4	C	51	Total	O	0	0
			51	51		
4	D	40	Total	O	0	0
			40	40		

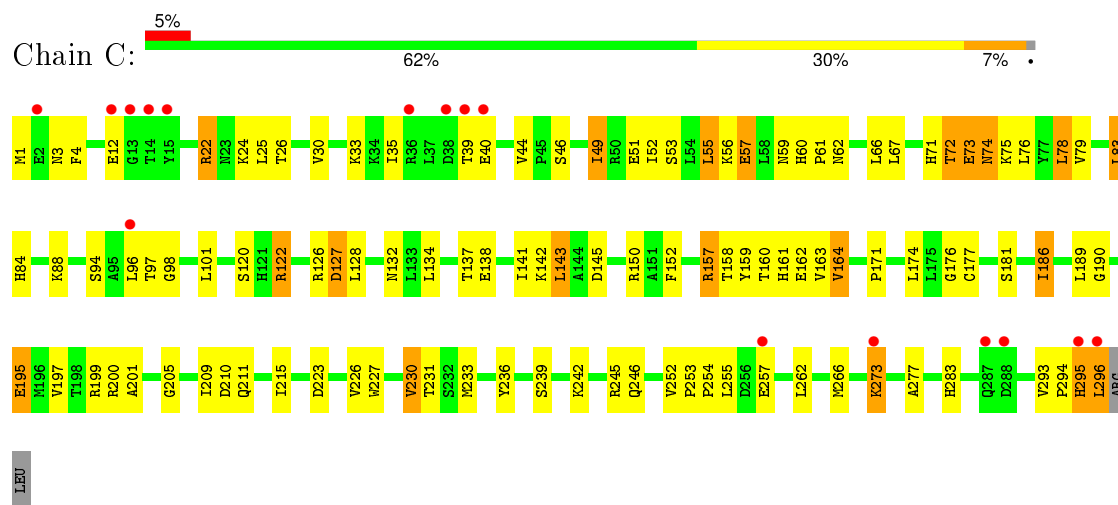
3 Residue-property plots

These plots are drawn for all protein, RNA and DNA chains in the entry. The first graphic for a chain summarises the proportions of errors displayed in the second graphic. The second graphic shows the sequence view annotated by issues in geometry and electron density. Residues are color-coded according to the number of geometric quality criteria for which they contain at least one outlier: green = 0, yellow = 1, orange = 2 and red = 3 or more. A red dot above a residue indicates a poor fit to the electron density ($RSRZ > 2$). Stretches of 2 or more consecutive residues without any outlier are shown as a green connector. Residues present in the sample, but not in the model, are shown in grey.

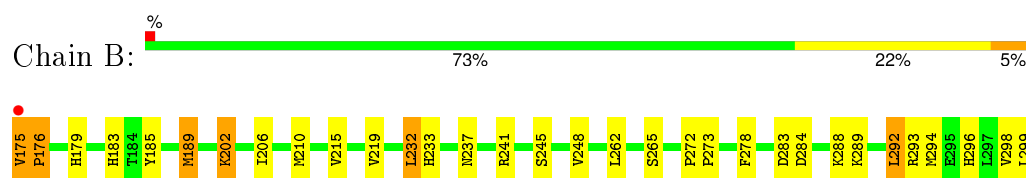
• Molecule 1: CELL DIVISION PROTEIN KINASE 2



• Molecule 1: CELL DIVISION PROTEIN KINASE 2

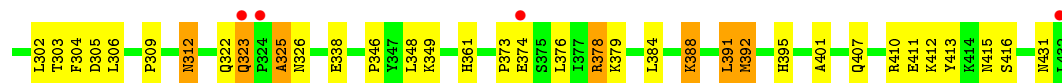


• Molecule 2: CYCLIN-A2





● Molecule 2: CYCLIN-A2



4 Data and refinement statistics

Property	Value	Source
Space group	P 21 21 2	Depositor
Cell constants a, b, c, α , β , γ	151.47 Å 163.70 Å 73.19 Å 90.00° 90.00° 90.00°	Depositor
Resolution (Å)	15.00 – 2.70 14.97 – 2.70	Depositor EDS
% Data completeness (in resolution range)	78.0 (15.00-2.70) 78.0 (14.97-2.70)	Depositor EDS
R_{merge}	0.17	Depositor
R_{sym}	(Not available)	Depositor
$\langle I/\sigma(I) \rangle$ ¹	2.84 (at 2.69 Å)	Xtriage
Refinement program	REFMAC 5.2.0019	Depositor
R, R_{free}	0.201 , 0.265 0.198 , 0.260	Depositor DCC
R_{free} test set	1996 reflections (5.34%)	DCC
Wilson B-factor (Å ²)	52.0	Xtriage
Anisotropy	0.067	Xtriage
Bulk solvent k_{sol} (e/Å ³), B_{sol} (Å ²)	0.40 , 58.0	EDS
Estimated twinning fraction	No twinning to report.	Xtriage
L-test for twinning ²	$\langle L \rangle = 0.52$, $\langle L^2 \rangle = 0.35$	Xtriage
Outliers	1 of 39368 reflections (0.003%)	Xtriage
F_o, F_c correlation	0.96	EDS
Total number of atoms	9172	wwPDB-VP
Average B, all atoms (Å ²)	48.0	wwPDB-VP

Xtriage's analysis on translational NCS is as follows: *The analyses of the Patterson function reveals a significant off-origin peak that is 46.52 % of the origin peak, indicating pseudo translational symmetry. The chance of finding a peak of this or larger height randomly in a structure without pseudo translational symmetry is equal to 1.1309e-04. The detected translational NCS is most likely also responsible for the elevated intensity ratio.*

¹ Intensities estimated from amplitudes.

² Theoretical values of $\langle |L| \rangle$, $\langle L^2 \rangle$ for acentric reflections are 0.5, 0.375 respectively for untwinned datasets, and 0.333, 0.2 for perfectly twinned datasets.

5 Model quality

5.1 Standard geometry

Bond lengths and bond angles in the following residue types are not validated in this section: TPO, C75

The Z score for a bond length (or angle) is the number of standard deviations the observed value is removed from the expected value. A bond length (or angle) with $|Z| > 5$ is considered an outlier worth inspection. RMSZ is the root-mean-square of all Z scores of the bond lengths (or angles).

Mol	Chain	Bond lengths		Bond angles	
		RMSZ	$\# Z > 5$	RMSZ	$\# Z > 5$
1	A	0.89	2/2432 (0.1%)	0.96	2/3300 (0.1%)
1	C	0.86	1/2365 (0.0%)	0.93	3/3210 (0.1%)
2	B	0.83	1/2133 (0.0%)	0.83	1/2897 (0.0%)
2	D	0.84	0/2119	0.85	3/2880 (0.1%)
All	All	0.86	4/9049 (0.0%)	0.90	9/12287 (0.1%)

Chiral center outliers are detected by calculating the chiral volume of a chiral center and verifying if the center is modelled as a planar moiety or with the opposite hand. A planarity outlier is detected by checking planarity of atoms in a peptide group, atoms in a mainchain group or atoms of a sidechain that are expected to be planar.

Mol	Chain	#Chirality outliers	#Planarity outliers
1	A	0	1
1	C	0	1
2	D	0	1
All	All	0	3

All (4) bond length outliers are listed below:

Mol	Chain	Res	Type	Atoms	Z	Observed(Å)	Ideal(Å)
1	C	162	GLU	CB-CG	6.26	1.64	1.52
1	A	162	GLU	CG-CD	5.51	1.60	1.51
2	B	202	LYS	CD-CE	5.25	1.64	1.51
1	A	162	GLU	CB-CG	5.23	1.62	1.52

All (9) bond angle outliers are listed below:

Mol	Chain	Res	Type	Atoms	Z	Observed(°)	Ideal(°)
1	A	296	LEU	CA-C-O	-17.46	83.43	120.10
1	C	127	ASP	CB-CG-OD1	6.18	123.86	118.30

Continued on next page...

Continued from previous page...

Mol	Chain	Res	Type	Atoms	Z	Observed(°)	Ideal(°)
1	C	143	LEU	CA-CB-CG	6.18	129.51	115.30
2	D	202	LYS	CD-CE-NZ	5.97	125.44	111.70
1	A	143	LEU	CA-CB-CG	5.84	128.74	115.30
2	B	202	LYS	CD-CE-NZ	5.80	125.04	111.70
1	C	126	ARG	NE-CZ-NH2	-5.55	117.53	120.30
2	D	232	LEU	CA-CB-CG	5.27	127.43	115.30
2	D	391	LEU	CA-CB-CG	5.17	127.18	115.30

There are no chirality outliers.

All (3) planarity outliers are listed below:

Mol	Chain	Res	Type	Group
1	A	165	THR	Peptide
1	C	83	LEU	Peptide
2	D	346	PRO	Peptide

5.2 Too-close contacts

In the following table, the Non-H and H(model) columns list the number of non-hydrogen atoms and hydrogen atoms in the chain respectively. The H(added) column lists the number of hydrogen atoms added and optimized by MolProbity. The Clashes column lists the number of clashes within the asymmetric unit, whereas Symm-Clashes lists symmetry related clashes.

Mol	Chain	Non-H	H(model)	H(added)	Clashes	Symm-Clashes
1	A	2382	0	2425	81	0
1	C	2382	0	2396	82	0
2	B	2083	0	2107	62	0
2	D	2083	0	2099	60	0
3	A	24	0	12	1	0
3	C	24	0	12	0	0
4	A	63	0	0	14	0
4	B	40	0	0	11	0
4	C	51	0	0	10	0
4	D	40	0	0	14	0
All	All	9172	0	9051	269	0

The all-atom clashscore is defined as the number of clashes found per 1000 atoms (including hydrogen atoms). The all-atom clashscore for this structure is 15.

All (269) close contacts within the same asymmetric unit are listed below, sorted by their clash magnitude.

Atom-1	Atom-2	Interatomic distance (Å)	Clash overlap (Å)
2:D:415:ASN:HB3	4:D:2040:HOH:O	1.36	1.21
2:B:415:ASN:HB3	4:B:2039:HOH:O	1.47	1.12
2:B:175:VAL:HB	4:B:2002:HOH:O	1.49	1.11
1:A:36:ARG:HD2	4:A:2013:HOH:O	1.52	1.09
1:C:181:SER:HB3	4:C:2039:HOH:O	1.53	1.06
1:C:84:HIS:HB3	4:C:2015:HOH:O	1.57	1.02
1:C:22:ARG:HH11	1:C:22:ARG:HG3	1.25	1.00
2:B:378:ARG:HG2	2:B:378:ARG:HH21	1.23	0.98
1:A:199:ARG:HG2	4:A:2026:HOH:O	1.64	0.96
1:A:84:HIS:HB3	4:A:2023:HOH:O	1.66	0.95
2:B:248:VAL:HG22	1:C:26:THR:HB	1.47	0.94
2:B:361:HIS:HD2	2:B:391:LEU:HD21	1.36	0.90
1:A:84:HIS:CB	4:A:2023:HOH:O	2.20	0.87
1:C:56:LYS:NZ	2:D:305:ASP:OD1	2.07	0.86
1:C:71[C]:HIS:HB3	4:C:2013:HOH:O	1.76	0.83
1:C:227:TRP:O	1:C:230:VAL:HG22	1.78	0.83
1:C:177:CYS:HB2	1:C:233:MET:CE	2.08	0.82
2:D:407:GLN:O	2:D:411:GLU:HG2	1.76	0.82
2:D:270:ILE:HG13	4:D:2019:HOH:O	1.81	0.81
1:C:73:GLU:OE1	2:D:293:ARG:NH1	2.14	0.81
2:B:361:HIS:CD2	2:B:391:LEU:HD21	2.16	0.79
2:B:407:GLN:O	2:B:411:GLU:HG2	1.83	0.79
1:A:188:SER:O	1:A:192:ILE:HG12	1.83	0.78
1:C:177:CYS:HB2	1:C:233:MET:HE1	1.65	0.78
1:C:98:GLY:H	1:C:199:ARG:HH11	1.31	0.78
1:A:122:ARG:NH1	2:B:185:TYR:HE2	1.82	0.77
2:D:175:VAL:O	2:D:175:VAL:HG12	1.84	0.77
2:B:415:ASN:CB	4:B:2039:HOH:O	2.19	0.76
2:B:189:MET:CE	2:B:189:MET:HA	2.17	0.75
1:C:39[C]:THR:HG22	1:C:40[C]:GLU:H	1.52	0.74
1:C:12:GLU:HG2	4:C:2002:HOH:O	1.87	0.74
1:A:60:HIS:CD2	1:A:62:ASN:H	2.06	0.73
2:B:354:VAL:HG21	4:B:2029:HOH:O	1.86	0.73
1:A:181:SER:HB3	4:A:2046:HOH:O	1.87	0.73
2:D:361:HIS:CD2	2:D:391:LEU:HD21	2.24	0.73
1:C:98:GLY:N	1:C:199:ARG:HH11	1.88	0.72
2:D:361:HIS:HD2	2:D:391:LEU:HD21	1.54	0.72
1:A:110:GLN:HA	1:A:113:GLN:HG3	1.74	0.70
1:A:166:LEU:N	4:A:2041:HOH:O	2.24	0.70
1:C:3:ASN:OD1	1:C:25:LEU:HD12	1.92	0.69
1:C:195:GLU:HG3	4:C:2041:HOH:O	1.92	0.69
1:C:74:ASN:OD1	1:C:74:ASN:N	2.26	0.69

Continued on next page...

Continued from previous page...

Atom-1	Atom-2	Interatomic distance (Å)	Clash overlap (Å)
1:A:39:THR:HB	1:A:74:ASN:HB3	1.76	0.68
1:A:60:HIS:HD2	1:A:62:ASN:H	1.41	0.68
1:C:44:VAL:HG12	1:C:49:ILE:HD12	1.74	0.68
1:C:157:ARG:O	1:C:158:THR:HB	1.92	0.67
2:D:175:VAL:N	2:D:176:PRO:HD3	2.09	0.67
2:D:322:GLN:NE2	2:D:325:ALA:O	2.28	0.66
2:B:388:LYS:O	2:B:392:MET:HG2	1.95	0.65
2:B:322:GLN:NE2	2:B:325:ALA:O	2.29	0.65
2:B:378:ARG:NH2	2:B:378:ARG:HG2	2.02	0.64
2:B:183:HIS:HB2	2:B:317:GLN:HE22	1.62	0.64
1:C:195:GLU:HG3	1:C:201:ALA:HA	1.79	0.64
2:B:321:HIS:ND1	2:B:375:SER:HB2	2.13	0.63
1:C:33:LYS:NZ	1:C:51:GLU:OE2	2.28	0.63
2:D:202:LYS:HE3	4:D:2001:HOH:O	1.98	0.63
1:C:22:ARG:HG3	1:C:22:ARG:NH1	2.03	0.63
1:C:84:HIS:CB	4:C:2015:HOH:O	2.31	0.62
1:A:193:PHE:CZ	1:A:255:LEU:HD21	2.34	0.62
2:D:175:VAL:O	2:D:175:VAL:CG1	2.46	0.62
2:B:298:VAL:HG12	2:B:302:LEU:HD12	1.82	0.62
1:C:60:HIS:HD2	1:C:62:ASN:H	1.45	0.61
1:A:154:VAL:CG1	2:B:176:PRO:HG3	2.30	0.61
1:C:195:GLU:CG	1:C:201:ALA:HA	2.30	0.61
1:C:163:VAL:HG13	1:C:164:VAL:HG23	1.82	0.61
2:D:323:GLN:HA	4:D:2024:HOH:O	2.01	0.60
2:B:351:LEU:HB2	2:B:354:VAL:HG23	1.83	0.60
1:A:122:ARG:HD3	4:A:2029:HOH:O	2.00	0.59
2:D:202:LYS:HE3	4:D:2011:HOH:O	2.01	0.59
2:D:183:HIS:HD2	4:D:2007:HOH:O	1.84	0.59
2:B:176:PRO:HG2	2:B:179:HIS:ND1	2.17	0.59
2:B:378:ARG:CG	2:B:378:ARG:HH21	2.03	0.59
2:D:374:GLU:CD	2:D:374:GLU:H	2.06	0.59
1:C:98:GLY:N	1:C:199:ARG:NH1	2.51	0.58
1:A:122:ARG:NH1	2:B:185:TYR:CE2	2.69	0.58
1:A:198:THR:O	1:A:199:ARG:HB2	2.04	0.58
1:A:1:MET:HB2	4:A:2001:HOH:O	2.02	0.58
2:D:289[D]:LYS:NZ	2:D:293:ARG:HE	2.01	0.58
2:D:392:MET:HA	2:D:392:MET:HE2	1.86	0.57
1:C:53:SER:O	1:C:56:LYS:HB2	2.05	0.57
2:B:346:PRO:O	2:B:349:LYS:HG2	2.04	0.57
1:A:98:GLY:HA2	1:A:199:ARG:HD3	1.86	0.57
1:A:15:TYR:HB3	1:A:35:ILE:HG23	1.87	0.57

Continued on next page...

Continued from previous page...

Atom-1	Atom-2	Interatomic distance (Å)	Clash overlap (Å)
2:D:289[D]:LYS:CE	2:D:293:ARG:HE	2.18	0.57
1:A:15:TYR:CE2	1:A:45:PRO:HB3	2.40	0.57
2:D:392:MET:HA	2:D:392:MET:CE	2.35	0.57
2:B:323:GLN:HA	4:B:2024:HOH:O	2.04	0.57
1:A:72:THR:O	1:A:74:ASN:N	2.37	0.56
1:A:197:VAL:HG21	1:A:255:LEU:HD13	1.87	0.56
2:D:278:PHE:HA	2:D:281:ILE:HD11	1.86	0.56
1:C:171:PRO:HA	1:C:174:LEU:HD12	1.87	0.56
1:A:109:PHE:O	1:A:113:GLN:HG2	2.05	0.56
1:A:219:LEU:HD21	1:A:248:PHE:HZ	1.70	0.56
2:B:233:HIS:HE1	4:B:2026:HOH:O	1.88	0.55
1:A:16:GLY:N	4:A:2005:HOH:O	2.36	0.55
1:A:16:GLY:HA2	1:A:34:LYS:O	2.06	0.55
1:C:231:THR:HA	1:C:236:TYR:CD1	2.41	0.55
1:A:24:LYS:HE2	4:A:2008:HOH:O	2.07	0.54
1:A:119:HIS:HD2	4:B:2004:HOH:O	1.89	0.54
2:B:273:PRO:HB2	2:B:278:PHE:CE2	2.42	0.54
2:D:395:HIS:CD2	4:D:2034:HOH:O	2.61	0.54
2:D:378:ARG:HG3	4:D:2030:HOH:O	2.06	0.54
2:B:401:ALA:HB3	2:B:402:PRO:HD3	1.89	0.54
1:A:136:ASN:C	4:A:2031:HOH:O	2.46	0.54
1:C:177:CYS:HB2	1:C:233:MET:HE2	1.89	0.54
1:A:83:LEU:HD11	1:A:142:LYS:HE3	1.90	0.53
2:B:189:MET:HE2	2:B:189:MET:HA	1.86	0.53
1:C:57:GLU:HG2	2:D:185:TYR:OH	2.08	0.53
1:A:294:PRO:C	1:A:296:LEU:H	2.12	0.53
1:A:157:ARG:CD	1:A:157:ARG:O	2.57	0.53
2:B:262:LEU:HD13	2:B:278:PHE:CE2	2.43	0.53
2:D:256:VAL:HG22	2:D:294:MET:CE	2.39	0.53
1:C:74:ASN:HB2	1:C:75[C]:LYS:HE2	1.91	0.53
1:C:273:LYS:HA	1:C:273:LYS:HE3	1.90	0.52
1:C:94:SER:HB3	1:C:296:LEU:HD11	1.92	0.52
2:B:289:LYS:O	2:B:293:ARG:HG3	2.09	0.52
1:A:227:TRP:O	1:A:230:VAL:HG22	2.09	0.52
2:B:215:VAL:HG12	2:B:342:ILE:HD13	1.92	0.52
2:D:395:HIS:HD2	4:D:2034:HOH:O	1.92	0.52
1:A:94:SER:HB3	1:A:296:LEU:HD11	1.91	0.52
1:A:12:GLU:CD	1:A:13:GLY:H	2.13	0.52
1:C:122:ARG:HA	1:C:152:PHE:CE1	2.45	0.52
1:C:51:GLU:O	1:C:55:LEU:HB2	2.10	0.52
1:A:98:GLY:CA	1:A:199:ARG:HH11	2.24	0.51

Continued on next page...

Continued from previous page...

Atom-1	Atom-2	Interatomic distance (Å)	Clash overlap (Å)
1:C:197:VAL:HG21	1:C:255:LEU:HD13	1.91	0.51
2:D:388:LYS:O	2:D:392:MET:HG2	2.10	0.51
2:D:196:LYS:HG2	2:D:244:SER:HB3	1.92	0.51
2:D:303:THR:O	2:D:304:PHE:HB2	2.10	0.51
2:B:175:VAL:N	2:B:176:PRO:CD	2.73	0.51
1:C:72:THR:O	1:C:74:ASN:N	2.42	0.51
1:A:154:VAL:HG11	2:B:176:PRO:HG3	1.92	0.51
1:C:227:TRP:CD2	1:C:230:VAL:HG13	2.46	0.51
1:A:22:ARG:HG3	1:A:22:ARG:HH11	1.75	0.51
2:D:277:GLU:O	2:D:281:ILE:HG13	2.10	0.51
2:D:395:HIS:HB3	4:D:2034:HOH:O	2.10	0.51
1:A:227:TRP:CD2	1:A:230:VAL:HG13	2.46	0.51
2:D:201:LYS:HE3	4:D:2010:HOH:O	2.10	0.51
2:D:412:LYS:HD3	2:D:413:TYR:CE1	2.46	0.51
1:C:157:ARG:O	1:C:158:THR:CB	2.58	0.51
1:A:73:GLU:OE1	2:B:293:ARG:NH2	2.44	0.51
1:A:154:VAL:HG13	2:B:176:PRO:HG3	1.92	0.50
1:C:158:THR:HA	4:C:2031:HOH:O	2.11	0.50
1:C:60:HIS:CD2	1:C:62:ASN:H	2.26	0.50
2:D:289[D]:LYS:HZ2	2:D:293:ARG:HH21	1.58	0.50
1:C:205:GLY:HA2	1:C:210:ASP:OD2	2.11	0.50
1:C:62:ASN:O	1:C:142:LYS:HA	2.12	0.50
1:A:98:GLY:N	1:A:199:ARG:HH11	2.10	0.50
1:C:262:LEU:HG	1:C:266:MET:CE	2.43	0.49
1:C:294:PRO:C	1:C:296:LEU:H	2.15	0.49
1:A:22:ARG:HA	1:A:28:GLU:O	2.13	0.49
1:C:127:ASP:O	1:C:132:ASN:ND2	2.41	0.48
2:B:248:VAL:CG2	1:C:26:THR:HB	2.32	0.48
1:C:161:HIS:HE1	1:C:176:GLY:HA2	1.79	0.48
2:D:289[D]:LYS:HE3	2:D:293:ARG:HE	1.77	0.48
1:A:115:LEU:HD22	1:A:189:LEU:HD23	1.95	0.48
1:A:163:VAL:HG12	1:A:173:ILE:HD13	1.96	0.48
1:A:54:LEU:HD22	1:A:123:VAL:HG22	1.95	0.48
2:D:230:GLU:OE1	2:D:312:ASN:HB3	2.14	0.48
2:B:378:ARG:CG	2:B:378:ARG:NH2	2.67	0.47
1:A:227:TRP:CE3	1:A:269:TYR:HB3	2.48	0.47
1:A:161:HIS:ND1	1:A:161:HIS:O	2.47	0.47
2:B:219:VAL:HG22	2:B:232:LEU:HD11	1.96	0.47
2:D:289[D]:LYS:HZ1	2:D:293:ARG:HE	1.60	0.47
1:C:55:LEU:HB3	1:C:66:LEU:HD22	1.96	0.47
1:C:262:LEU:HG	1:C:266:MET:HE3	1.96	0.47

Continued on next page...

Continued from previous page...

Atom-1	Atom-2	Interatomic distance (Å)	Clash overlap (Å)
2:D:189:MET:HB3	2:D:309:PRO:HG3	1.96	0.47
2:B:322:GLN:O	4:B:2024:HOH:O	2.20	0.47
1:C:35:ILE:HD12	1:C:76:LEU:HD23	1.96	0.47
1:A:157:ARG:O	1:A:157:ARG:HD2	2.15	0.47
2:D:241:ARG:CZ	2:D:302:LEU:HD22	2.45	0.47
2:D:401:ALA:HB1	2:D:410:ARG:HD2	1.96	0.47
1:C:98:GLY:HA2	1:C:199:ARG:HD3	1.97	0.47
1:A:122:ARG:HA	1:A:152:PHE:CE1	2.50	0.47
2:D:233:HIS:HE1	4:D:2026:HOH:O	1.98	0.47
1:C:253:PRO:HD2	1:C:254:PRO:HD3	1.97	0.47
1:C:44:VAL:CG1	1:C:49:ILE:HD12	2.44	0.46
1:C:39[C]:THR:HG22	1:C:40[C]:GLU:N	2.27	0.46
1:C:83:LEU:HA	1:C:84:HIS:HD2	1.80	0.46
1:A:170:ALA:HB1	1:A:172:GLU:OE2	2.16	0.46
1:A:268:HIS:HD2	1:A:270:ASP:H	1.64	0.46
1:A:56:LYS:NZ	2:B:303:THR:O	2.48	0.46
1:A:158:THR:HG22	1:A:158:THR:O	2.15	0.46
1:A:157:ARG:O	1:A:157:ARG:CG	2.63	0.46
1:A:71:HIS:CE1	2:B:296:HIS:CD2	3.04	0.46
2:B:324:PRO:HD2	4:B:2025:HOH:O	2.16	0.46
1:C:159:TYR:O	1:C:160:TPO:C	2.64	0.46
2:B:262:LEU:HD13	2:B:278:PHE:CD2	2.51	0.45
1:C:189:LEU:HD23	1:C:189:LEU:HA	1.66	0.45
1:A:242:LYS:HE3	4:A:2054:HOH:O	2.15	0.45
2:B:303:THR:O	2:B:304:PHE:HB2	2.16	0.45
2:D:175:VAL:N	2:D:176:PRO:CD	2.78	0.45
2:D:179:HIS:CD2	2:D:379:LYS:HZ1	2.34	0.45
2:D:373:PRO:HD2	2:D:376:LEU:HD12	1.99	0.45
1:C:211:GLN:O	1:C:215:ILE:HG13	2.17	0.45
2:B:374:GLU:HA	2:B:377:ILE:HD12	1.98	0.45
2:B:189:MET:HB3	2:B:309:PRO:HG3	1.98	0.45
2:D:256:VAL:HG22	2:D:294:MET:HE1	1.98	0.45
2:B:378:ARG:NE	4:B:2033:HOH:O	2.50	0.44
2:D:179:HIS:CD2	2:D:379:LYS:NZ	2.86	0.44
1:A:51:GLU:O	1:A:55:LEU:HB2	2.18	0.44
2:B:294:MET:O	2:B:298:VAL:HG23	2.18	0.44
2:D:273:PRO:HB2	2:D:278:PHE:CE2	2.53	0.44
1:A:49:ILE:HG23	2:B:306:LEU:HD12	2.00	0.44
2:B:189:MET:HE3	2:B:189:MET:HA	1.95	0.44
2:B:265:SER:HB3	2:B:272:PRO:HB3	2.00	0.44
2:B:292:LEU:HD12	2:B:292:LEU:HA	1.80	0.44

Continued on next page...

Continued from previous page...

Atom-1	Atom-2	Interatomic distance (Å)	Clash overlap (Å)
1:A:107:TYR:O	1:A:111:LEU:HG	2.17	0.44
2:B:299:LEU:HD22	2:B:304:PHE:CD1	2.53	0.43
2:B:379:LYS:HZ2	2:B:379:LYS:HG3	1.59	0.43
1:C:49:ILE:HG23	2:D:306:LEU:HD12	2.00	0.43
2:D:202:LYS:HG3	4:D:2001:HOH:O	2.17	0.43
1:A:37:LEU:C	1:A:39:THR:H	2.22	0.43
1:C:44:VAL:O	2:D:266:LYS:HE2	2.18	0.43
1:C:223:ASP:H	1:C:226:VAL:HG12	1.84	0.43
1:C:122:ARG:HD3	4:C:2017:HOH:O	2.17	0.43
1:A:166:LEU:C	1:A:168:TYR:H	2.21	0.43
1:A:22:ARG:NH1	1:A:22:ARG:HG3	2.34	0.43
2:D:289[D]:LYS:HZ1	2:D:293:ARG:NE	2.17	0.43
2:B:233:HIS:CE1	4:B:2026:HOH:O	2.68	0.43
1:C:84:HIS:HB2	4:C:2021:HOH:O	2.19	0.43
1:C:84:HIS:N	1:C:84:HIS:CD2	2.87	0.42
1:A:197:VAL:CG2	1:A:255:LEU:HD13	2.48	0.42
2:B:202:LYS:O	2:B:202:LYS:HG3	2.19	0.42
1:A:230:VAL:HA	1:A:233:MET:HG3	2.00	0.42
2:B:176:PRO:HG2	2:B:179:HIS:CG	2.54	0.42
1:C:61:PRO:O	1:C:142:LYS:HE2	2.18	0.42
1:A:84:HIS:HB2	4:A:2023:HOH:O	1.98	0.42
1:A:231:THR:HA	1:A:236:TYR:CD1	2.55	0.42
2:B:425:ASN:HA	2:B:426:PRO:HD2	1.91	0.42
2:D:183:HIS:CD2	4:D:2007:HOH:O	2.66	0.42
2:B:215:VAL:CG1	2:B:342:ILE:HD13	2.49	0.42
1:C:84:HIS:ND1	1:C:137:THR:HG23	2.35	0.42
1:C:4:PHE:CE1	1:C:30:VAL:HG21	2.54	0.42
1:C:1:MET:HG3	1:C:1:MET:O	2.19	0.42
1:C:22:ARG:HH12	1:C:24:LYS:HA	1.85	0.42
1:A:122:ARG:NE	4:A:2029:HOH:O	2.53	0.41
1:A:122:ARG:O	1:A:151:ALA:HA	2.20	0.41
2:B:206:ILE:HG22	2:B:210:MET:SD	2.60	0.41
1:C:67:LEU:HB2	1:C:79:VAL:O	2.20	0.41
2:D:338:GLU:OE1	2:D:412:LYS:NZ	2.43	0.41
2:D:190:GLU:HA	2:D:309:PRO:HG2	2.03	0.41
2:B:175:VAL:O	2:B:176:PRO:O	2.38	0.41
1:C:22:ARG:NH1	1:C:22:ARG:CG	2.80	0.41
1:A:163:VAL:HG13	1:A:164:VAL:HG23	2.02	0.41
1:A:288:ASP:OD1	1:A:288:ASP:N	2.54	0.41
2:B:237:ASN:OD1	2:B:241:ARG:HD3	2.20	0.41
2:D:234:LEU:HD22	2:D:238:TYR:OH	2.21	0.41

Continued on next page...

Continued from previous page...

Atom-1	Atom-2	Interatomic distance (Å)	Clash overlap (Å)
1:C:134:LEU:O	1:C:141:ILE:HA	2.20	0.41
3:A:1297:C75:H17	3:A:1297:C75:H612	2.03	0.41
1:A:261:SER:O	1:A:264:SER:HB3	2.20	0.41
1:A:171:PRO:HA	1:A:174:LEU:HD12	2.03	0.41
2:D:361:HIS:HD2	2:D:391:LEU:CD2	2.30	0.41
1:C:161:HIS:CD2	1:C:161:HIS:C	2.94	0.41
1:A:231:THR:HA	1:A:236:TYR:CE1	2.56	0.41
1:C:52:ILE:HD11	1:C:78:LEU:HD22	2.03	0.41
1:A:263:LEU:HA	1:A:266:MET:HE2	2.03	0.41
2:D:214:LEU:HD11	2:D:257:GLY:HA3	2.02	0.41
1:A:33:LYS:NZ	1:A:51:GLU:OE2	2.52	0.41
1:C:262:LEU:HB2	1:C:283:HIS:CE1	2.56	0.40
1:A:63:ILE:O	1:A:64:VAL:C	2.60	0.40
2:D:384:LEU:HA	2:D:384:LEU:HD23	1.59	0.40
1:A:26:THR:HB	2:D:248:VAL:HG22	2.03	0.40
1:C:242:LYS:NZ	4:C:2046:HOH:O	2.51	0.40
1:C:245:ARG:HG2	1:C:246:GLN:H	1.86	0.40
1:A:21:ALA:O	1:A:29:VAL:HA	2.21	0.40
2:D:281:ILE:HG13	2:D:281:ILE:H	1.68	0.40
1:A:161:HIS:ND1	1:A:161:HIS:C	2.72	0.40
1:C:186:ILE:HD11	1:C:277:ALA:N	2.37	0.40

There are no symmetry-related clashes.

5.3 Torsion angles [i](#)

5.3.1 Protein backbone [i](#)

In the following table, the Percentiles column shows the percent Ramachandran outliers of the chain as a percentile score with respect to all X-ray entries followed by that with respect to entries of similar resolution.

The Analysed column shows the number of residues for which the backbone conformation was analysed, and the total number of residues.

Mol	Chain	Analysed	Favoured	Allowed	Outliers	Percentiles	
1	A	293/298 (98%)	255 (87%)	32 (11%)	6 (2%)	9	24
1	C	293/298 (98%)	255 (87%)	32 (11%)	6 (2%)	9	24
2	B	256/258 (99%)	242 (94%)	11 (4%)	3 (1%)	16	39
2	D	256/258 (99%)	243 (95%)	11 (4%)	2 (1%)	24	51

Continued on next page...

Continued from previous page...

Mol	Chain	Analysed	Favoured	Allowed	Outliers	Percentiles	
All	All	1098/1112 (99%)	995 (91%)	86 (8%)	17 (2%)	13	32

All (17) Ramachandran outliers are listed below:

Mol	Chain	Res	Type
1	A	72	THR
1	A	164	VAL
1	A	166	LEU
1	A	295	HIS
2	B	176	PRO
2	B	325	ALA
1	C	145	ASP
1	C	164	VAL
1	C	295	HIS
2	D	325	ALA
1	A	14	THR
1	C	73	GLU
2	B	326	ASN
1	C	190	GLY
2	D	326	ASN
1	A	145	ASP
1	C	186	ILE

5.3.2 Protein sidechains ⓘ

In the following table, the Percentiles column shows the percent sidechain outliers of the chain as a percentile score with respect to all X-ray entries followed by that with respect to entries of similar resolution.

The Analysed column shows the number of residues for which the sidechain conformation was analysed, and the total number of residues.

Mol	Chain	Analysed	Rotameric	Outliers	Percentiles	
1	A	260/262 (99%)	230 (88%)	30 (12%)	7	16
1	C	247/262 (94%)	216 (87%)	31 (13%)	5	13
2	B	232/232 (100%)	215 (93%)	17 (7%)	17	39
2	D	229/232 (99%)	212 (93%)	17 (7%)	17	39
All	All	968/988 (98%)	873 (90%)	95 (10%)	10	23

All (95) residues with a non-rotameric sidechain are listed below:

Mol	Chain	Res	Type
1	A	5	GLN
1	A	12	GLU
1	A	24	LYS
1	A	38	ASP
1	A	41	THR
1	A	55	LEU
1	A	64	VAL
1	A	65	LYS
1	A	78	LEU
1	A	89	LYS
1	A	91	MET
1	A	96	LEU
1	A	122	ARG
1	A	131	GLN
1	A	138	GLU
1	A	143	LEU
1	A	150	ARG
1	A	157	ARG
1	A	161	HIS
1	A	189	LEU
1	A	200	ARG
1	A	226	VAL
1	A	230	VAL
1	A	231	THR
1	A	239	SER
1	A	247	ASP
1	A	273	LYS
1	A	290	THR
1	A	295	HIS
1	A	296	LEU
2	B	175	VAL
2	B	189	MET
2	B	232	LEU
2	B	245	SER
2	B	283	ASP
2	B	284	ASP
2	B	288	LYS
2	B	292	LEU
2	B	312	ASN
2	B	323	GLN
2	B	348	LEU
2	B	374	GLU
2	B	375	SER

Continued on next page...

Continued from previous page...

Mol	Chain	Res	Type
2	B	378	ARG
2	B	391	LEU
2	B	416	SER
2	B	432	LEU
1	C	22	ARG
1	C	46	SER
1	C	49	ILE
1	C	55	LEU
1	C	57	GLU
1	C	59	ASN
1	C	72	THR
1	C	74	ASN
1	C	78	LEU
1	C	88	LYS
1	C	96	LEU
1	C	97	THR
1	C	101	LEU
1	C	120	SER
1	C	122	ARG
1	C	128	LEU
1	C	138	GLU
1	C	143	LEU
1	C	150	ARG
1	C	157	ARG
1	C	195	GLU
1	C	200	ARG
1	C	209	ILE
1	C	230	VAL
1	C	239	SER
1	C	252	VAL
1	C	257	GLU
1	C	273	LYS
1	C	293	VAL
1	C	295	HIS
1	C	296	LEU
2	D	180	GLU
2	D	194	LYS
2	D	232	LEU
2	D	245	SER
2	D	281	ILE
2	D	283	ASP
2	D	288	LYS

Continued on next page...

Continued from previous page...

Mol	Chain	Res	Type
2	D	292	LEU
2	D	312	ASN
2	D	323	GLN
2	D	348	LEU
2	D	349	LYS
2	D	378	ARG
2	D	388	LYS
2	D	392	MET
2	D	416	SER
2	D	431	ASN

Some sidechains can be flipped to improve hydrogen bonding and reduce clashes. All (28) such sidechains are listed below:

Mol	Chain	Res	Type
1	A	60	HIS
1	A	85	GLN
1	A	268	HIS
2	B	179	HIS
2	B	183	HIS
2	B	254	GLN
2	B	296	HIS
2	B	317	GLN
2	B	322	GLN
2	B	361	HIS
2	B	370	GLN
2	B	395	HIS
2	B	396	GLN
1	C	59	ASN
1	C	60	HIS
1	C	62	ASN
1	C	84	HIS
1	C	85	GLN
1	C	119	HIS
1	C	161	HIS
1	C	265	GLN
1	C	268	HIS
2	D	179	HIS
2	D	254	GLN
2	D	322	GLN
2	D	361	HIS
2	D	395	HIS
2	D	406	GLN

5.3.3 RNA ⓘ

There are no RNA molecules in this entry.

5.4 Non-standard residues in protein, DNA, RNA chains ⓘ

2 non-standard protein/DNA/RNA residues are modelled in this entry.

In the following table, the Counts columns list the number of bonds (or angles) for which Mogul statistics could be retrieved, the number of bonds (or angles) that are observed in the model and the number of bonds (or angles) that are defined in the chemical component dictionary. The Link column lists molecule types, if any, to which the group is linked. The Z score for a bond length (or angle) is the number of standard deviations the observed value is removed from the expected value. A bond length (or angle) with $|Z| > 2$ is considered an outlier worth inspection. RMSZ is the root-mean-square of all Z scores of the bond lengths (or angles).

Mol	Type	Chain	Res	Link	Bond lengths			Bond angles		
					Counts	RMSZ	$\# Z > 2$	Counts	RMSZ	$\# Z > 2$
1	TPO	A	160	1	8,10,11	1.64	2 (25%)	7,14,16	0.96	0
1	TPO	C	160	1	8,10,11	1.27	1 (12%)	7,14,16	1.26	2 (28%)

In the following table, the Chirals column lists the number of chiral outliers, the number of chiral centers analysed, the number of these observed in the model and the number defined in the chemical component dictionary. Similar counts are reported in the Torsion and Rings columns. '-' means no outliers of that kind were identified.

Mol	Type	Chain	Res	Link	Chirals	Torsions	Rings
1	TPO	A	160	1	-	0/8/11/13	0/0/0/0
1	TPO	C	160	1	-	0/8/11/13	0/0/0/0

All (3) bond length outliers are listed below:

Mol	Chain	Res	Type	Atoms	Z	Observed(Å)	Ideal(Å)
1	A	160	TPO	P-O3P	2.09	1.62	1.54
1	A	160	TPO	P-O1P	3.07	1.61	1.51
1	C	160	TPO	P-O1P	3.12	1.61	1.51

All (2) bond angle outliers are listed below:

Mol	Chain	Res	Type	Atoms	Z	Observed(°)	Ideal(°)
1	C	160	TPO	O-C-CA	-2.17	119.70	125.44
1	C	160	TPO	CG2-CB-CA	-2.04	109.02	113.17

There are no chirality outliers.

There are no torsion outliers.

There are no ring outliers.

1 monomer is involved in 1 short contact:

Mol	Chain	Res	Type	Clashes	Symm-Clashes
1	C	160	TPO	1	0

5.5 Carbohydrates [i](#)

There are no carbohydrates in this entry.

5.6 Ligand geometry [i](#)

2 ligands are modelled in this entry.

In the following table, the Counts columns list the number of bonds (or angles) for which Mogul statistics could be retrieved, the number of bonds (or angles) that are observed in the model and the number of bonds (or angles) that are defined in the chemical component dictionary. The Link column lists molecule types, if any, to which the group is linked. The Z score for a bond length (or angle) is the number of standard deviations the observed value is removed from the expected value. A bond length (or angle) with $|Z| > 2$ is considered an outlier worth inspection. RMSZ is the root-mean-square of all Z scores of the bond lengths (or angles).

Mol	Type	Chain	Res	Link	Bond lengths			Bond angles		
					Counts	RMSZ	$\# Z > 2$	Counts	RMSZ	$\# Z > 2$
3	C75	A	1297	-	21,26,26	2.51	5 (23%)	25,38,38	4.13	12 (48%)
3	C75	C	1297	-	21,26,26	2.51	5 (23%)	25,38,38	3.61	12 (48%)

In the following table, the Chirals column lists the number of chiral outliers, the number of chiral centers analysed, the number of these observed in the model and the number defined in the chemical component dictionary. Similar counts are reported in the Torsion and Rings columns. '-' means no outliers of that kind were identified.

Mol	Type	Chain	Res	Link	Chirals	Torsions	Rings
3	C75	A	1297	-	-	0/11/29/29	0/2/3/3
3	C75	C	1297	-	-	0/11/29/29	0/2/3/3

All (10) bond length outliers are listed below:

Mol	Chain	Res	Type	Atoms	Z	Observed(Å)	Ideal(Å)
3	C	1297	C75	C8-C7	-7.24	1.39	1.48
3	A	1297	C75	C9-S1	-6.96	1.66	1.74

Continued on next page...

Continued from previous page...

Mol	Chain	Res	Type	Atoms	Z	Observed(Å)	Ideal(Å)
3	A	1297	C75	C8-C7	-6.93	1.39	1.48
3	C	1297	C75	C9-S1	-6.78	1.66	1.74
3	A	1297	C75	C7-S1	-3.37	1.66	1.73
3	C	1297	C75	C7-S1	-3.23	1.66	1.73
3	C	1297	C75	C61-N6	-2.55	1.43	1.46
3	A	1297	C75	C61-N6	-2.45	1.43	1.46
3	A	1297	C75	C13-C4	3.24	1.50	1.46
3	C	1297	C75	C13-C4	3.25	1.50	1.46

All (24) bond angle outliers are listed below:

Mol	Chain	Res	Type	Atoms	Z	Observed(°)	Ideal(°)
3	A	1297	C75	O3-S2-O4	-7.52	109.56	119.54
3	C	1297	C75	O3-S2-O4	-7.48	109.62	119.54
3	A	1297	C75	C18-C13-C4	-7.08	113.60	120.45
3	C	1297	C75	C8-C7-S1	-6.08	105.78	109.80
3	C	1297	C75	C18-C13-C4	-5.60	115.03	120.45
3	A	1297	C75	C8-C7-S1	-5.34	106.27	109.80
3	C	1297	C75	O1-C8-C7	-4.70	121.60	125.98
3	A	1297	C75	C17-C16-S2	-4.54	114.53	119.78
3	A	1297	C75	S1-C9-N2	-2.92	107.61	110.65
3	A	1297	C75	C6-C7-S1	-2.72	126.28	129.31
3	C	1297	C75	S1-C9-N2	-2.52	108.03	110.65
3	C	1297	C75	C17-C16-S2	-2.16	117.28	119.78
3	C	1297	C75	C15-C16-S2	2.07	122.18	119.78
3	A	1297	C75	O4-S2-N6	2.12	109.59	107.13
3	C	1297	C75	C3-C2-C1	2.14	108.19	106.30
3	C	1297	C75	O3-S2-N6	2.17	109.65	107.13
3	A	1297	C75	C3-C2-C1	2.58	108.57	106.30
3	A	1297	C75	C15-C16-S2	3.83	124.21	119.78
3	C	1297	C75	C14-C13-C4	4.58	124.89	120.45
3	A	1297	C75	C14-C13-C4	5.89	126.16	120.45
3	C	1297	C75	C6-C7-C8	6.02	124.13	120.35
3	A	1297	C75	C7-C8-N2	6.73	113.70	110.03
3	C	1297	C75	C7-C8-N2	8.72	114.78	110.03
3	A	1297	C75	C6-C7-C8	11.29	127.45	120.35

There are no chirality outliers.

There are no torsion outliers.

There are no ring outliers.

1 monomer is involved in 1 short contact:

Mol	Chain	Res	Type	Clashes	Symm-Clashes
3	A	1297	C75	1	0

5.7 Other polymers [i](#)

There are no such residues in this entry.

5.8 Polymer linkage issues [i](#)

There are no chain breaks in this entry.

6 Fit of model and data

6.1 Protein, DNA and RNA chains

In the following table, the column labelled ‘#RSRZ> 2’ contains the number (and percentage) of RSRZ outliers, followed by percent RSRZ outliers for the chain as percentile scores relative to all X-ray entries and entries of similar resolution. The OWAB column contains the minimum, median, 95th percentile and maximum values of the occupancy-weighted average B-factor per residue. The column labelled ‘Q< 0.9’ lists the number of (and percentage) of residues with an average occupancy less than 0.9.

Mol	Chain	Analysed	<RSRZ>	#RSRZ>2	OWAB(Å ²)	Q<0.9
1	A	295/298 (98%)	-0.16	14 (4%) 35 34	29, 47, 73, 88	7 (2%)
1	C	295/298 (98%)	-0.17	16 (5%) 29 28	32, 47, 73, 88	7 (2%)
2	B	258/258 (100%)	-0.42	3 (1%) 81 81	30, 46, 65, 80	2 (0%)
2	D	258/258 (100%)	-0.37	6 (2%) 64 64	30, 45, 65, 80	2 (0%)
All	All	1106/1112 (99%)	-0.27	39 (3%) 48 48	29, 46, 70, 88	18 (1%)

All (39) RSRZ outliers are listed below:

Mol	Chain	Res	Type	RSRZ
1	C	38[C]	ASP	5.8
1	A	14	THR	5.3
1	A	40	GLU	4.7
1	C	96	LEU	4.6
2	B	175	VAL	4.5
1	C	13	GLY	4.3
1	C	40[C]	GLU	4.2
1	A	295	HIS	4.2
1	A	15	TYR	4.0
1	C	14	THR	3.9
1	C	295	HIS	3.8
1	A	96	LEU	3.7
1	C	257	GLU	3.6
1	A	38	ASP	3.6
2	B	324	PRO	3.6
1	C	39[C]	THR	3.6
2	B	323	GLN	3.5
1	C	15[C]	TYR	3.2
2	D	324	PRO	3.0
2	D	323	GLN	2.8
2	D	175	VAL	2.8

Continued on next page...

Continued from previous page...

Mol	Chain	Res	Type	RSRZ
1	A	296	LEU	2.7
1	C	36	ARG	2.6
1	A	39	THR	2.6
2	D	271	TYR	2.5
1	A	257	GLU	2.5
1	A	13	GLY	2.5
1	A	36	ARG	2.4
1	C	296	LEU	2.4
2	D	374	GLU	2.4
1	C	12	GLU	2.3
2	D	432	LEU	2.2
1	C	287	GLN	2.2
1	C	2[C]	GLU	2.1
1	A	288	ASP	2.1
1	A	290	THR	2.1
1	C	273	LYS	2.1
1	C	288	ASP	2.0
1	A	200	ARG	2.0

6.2 Non-standard residues in protein, DNA, RNA chains [i](#)

In the following table, the Atoms column lists the number of modelled atoms in the group and the number defined in the chemical component dictionary. LLDF column lists the quality of electron density of the group with respect to its neighbouring residues in protein, DNA or RNA chains. The B-factors column lists the minimum, median, 95th percentile and maximum values of B factors of atoms in the group. The column labelled 'Q< 0.9' lists the number of atoms with occupancy less than 0.9.

Mol	Type	Chain	Res	Atoms	RSCC	RSR	LLDF	B-factors(Å ²)	Q<0.9
1	TPO	C	160	11/12	0.99	0.12	-	30,39,45,46	0
1	TPO	A	160	11/12	0.98	0.11	-	31,38,45,45	0

6.3 Carbohydrates [i](#)

There are no carbohydrates in this entry.

6.4 Ligands [i](#)

In the following table, the Atoms column lists the number of modelled atoms in the group and the number defined in the chemical component dictionary. LLDF column lists the quality of electron density of the group with respect to its neighbouring residues in protein, DNA or RNA chains.

The B-factors column lists the minimum, median, 95th percentile and maximum values of B factors of atoms in the group. The column labelled 'Q< 0.9' lists the number of atoms with occupancy less than 0.9.

Mol	Type	Chain	Res	Atoms	RSCC	RSR	LLDF	B-factors(\AA^2)	Q<0.9
3	C75	A	1297	24/24	0.96	0.12	-0.43	66,68,68,69	0
3	C75	C	1297	24/24	0.97	0.12	-0.62	62,64,65,66	0

6.5 Other polymers [i](#)

There are no such residues in this entry.