



# Full wwPDB X-ray Structure Validation Report ⓘ

Feb 1, 2016 – 05:50 AM GMT

PDB ID : 2UZE  
Title : CRYSTAL STRUCTURE OF HUMAN CDK2 COMPLEXED WITH A THI-AZOLIDINONE INHIBITOR  
Authors : Richardson, C.M.; Dokurno, P.; Murray, J.B.; Surgenor, A.E.  
Deposited on : 2007-04-27  
Resolution : 2.40 Å(reported)

This is a Full wwPDB X-ray Structure Validation Report for a publicly released PDB entry.  
We welcome your comments at [validation@mail.wwpdb.org](mailto:validation@mail.wwpdb.org)  
A user guide is available at  
<http://wwpdb.org/validation/2016/XrayValidationReportHelp>  
with specific help available everywhere you see the ⓘ symbol.

---

The following versions of software and data (see [references ⓘ](#)) were used in the production of this report:

MolProbity : 4.02b-467  
Mogul : 1.7 (RC4), CSD as536be (2015)  
Xtriage (Phenix) : 1.9-1692  
EDS : rb-20026688  
Percentile statistics : 20151230.v01 (using entries in the PDB archive December 30th 2015)  
Refmac : 5.8.0135  
CCP4 : 6.5.0  
Ideal geometry (proteins) : Engh & Huber (2001)  
Ideal geometry (DNA, RNA) : Parkinson et al. (1996)  
Validation Pipeline (wwPDB-VP) : trunk26865

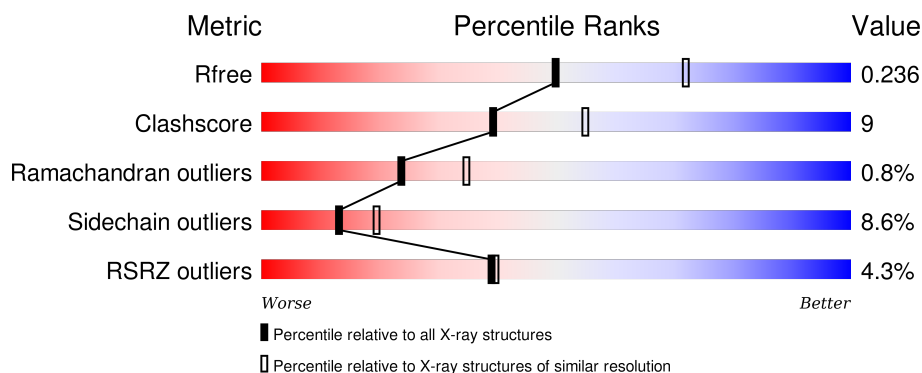
# 1 Overall quality at a glance

The following experimental techniques were used to determine the structure:

## *X-RAY DIFFRACTION*

The reported resolution of this entry is 2.40 Å.

Percentile scores (ranging between 0-100) for global validation metrics of the entry are shown in the following graphic. The table shows the number of entries on which the scores are based.



Metric	Whole archive (#Entries)	Similar resolution (#Entries, resolution range(Å))
$R_{free}$	91344	2919 (2.40-2.40)
Clashscore	102246	3407 (2.40-2.40)
Ramachandran outliers	100387	3351 (2.40-2.40)
Sidechain outliers	100360	3352 (2.40-2.40)
RSRZ outliers	91569	2928 (2.40-2.40)

The table below summarises the geometric issues observed across the polymeric chains and their fit to the electron density. The red, orange, yellow and green segments on the lower bar indicate the fraction of residues that contain outliers for  $\geq 3$ , 2, 1 and 0 types of geometric quality criteria. A grey segment represents the fraction of residues that are not modelled. The numeric value for each fraction is indicated below the corresponding segment, with a dot representing fractions  $\leq 5\%$ . The upper red bar (where present) indicates the fraction of residues that have poor fit to the electron density. The numeric value is given above the bar.

Mol	Chain	Length	Quality of chain
1	A	298	<div> <div>6%</div> <div>76%</div> <div>19%</div> <div>• •</div> </div>
1	C	298	<div> <div>6%</div> <div>78%</div> <div>19%</div> <div>• •</div> </div>
2	B	258	<div> <div>2%</div> <div>79%</div> <div>17%</div> <div>•</div> </div>
2	D	258	<div> <div>2%</div> <div>81%</div> <div>16%</div> <div>•</div> </div>

The following table lists non-polymeric compounds, carbohydrate monomers and non-standard

residues in protein, DNA, RNA chains that are outliers for geometric or electron-density-fit criteria:

Mol	Type	Chain	Res	Chirality	Geometry	Clashes	Electron density
1	TPO	A	160	X	-	-	-
1	TPO	C	160	X	-	-	-

## 2 Entry composition [i](#)

There are 4 unique types of molecules in this entry. The entry contains 9256 atoms, of which 0 are hydrogens and 0 are deuteriums.

In the tables below, the ZeroOcc column contains the number of atoms modelled with zero occupancy, the AltConf column contains the number of residues with at least one atom in alternate conformation and the Trace column contains the number of residues modelled with at most 2 atoms.

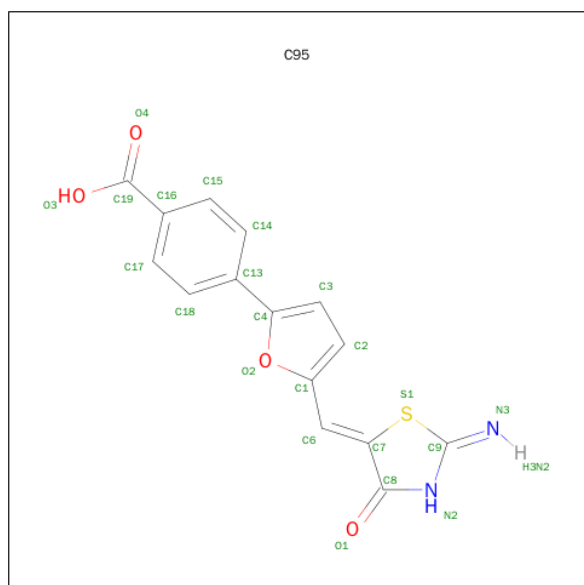
- Molecule 1 is a protein called CELL DIVISION PROTEIN KINASE 2.

Mol	Chain	Residues	Atoms						ZeroOcc	AltConf	Trace
1	A	296	Total	C	N	O	P	S	0	0	0
			2370	1541	400	420	1	8			
1	C	297	Total	C	N	O	P	S	0	0	1
			2378	1545	404	420	1	8			

- Molecule 2 is a protein called CYCLIN A2.

Mol	Chain	Residues	Atoms					ZeroOcc	AltConf	Trace
2	B	258	Total	C	N	O	S	0	0	0
			2084	1350	339	384	11			
2	D	258	Total	C	N	O	S	0	0	0
			2084	1350	339	384	11			

- Molecule 3 is 4-{5-[(Z)-(2-IMINO-4-OXO-1,3-THIAZOLIDIN-5-YLIDENE)METHYL]FURAN-2-YL}BENZOIC ACID (three-letter code: C95) (formula: C<sub>15</sub>H<sub>10</sub>N<sub>2</sub>O<sub>4</sub>S).



Mol	Chain	Residues	Atoms					ZeroOcc	AltConf
3	A	1	Total	C	N	O	S	0	0
			22	15	2	4	1		
3	C	1	Total	C	N	O	S	0	0
			22	15	2	4	1		

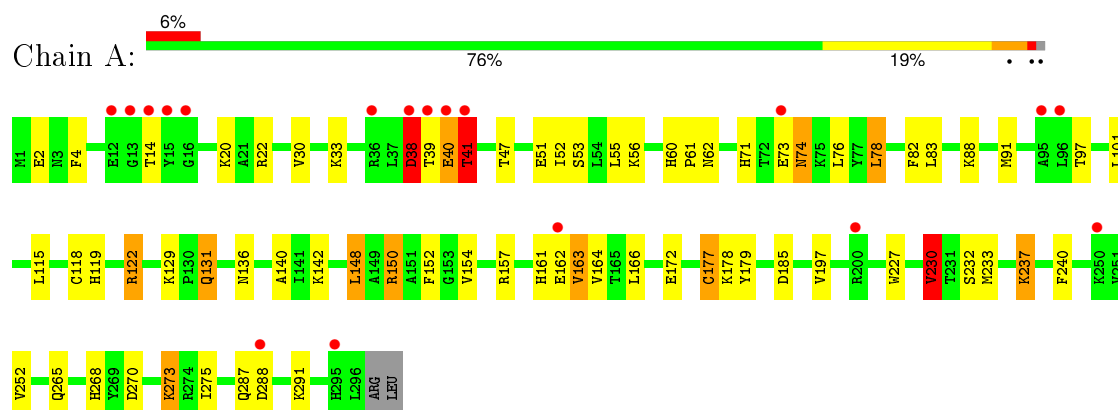
- Molecule 4 is water.

Mol	Chain	Residues	Atoms		ZeroOcc	AltConf
4	A	68	Total	O	0	0
			68	68		
4	B	81	Total	O	0	0
			81	81		
4	C	75	Total	O	0	0
			75	75		
4	D	72	Total	O	0	0
			72	72		

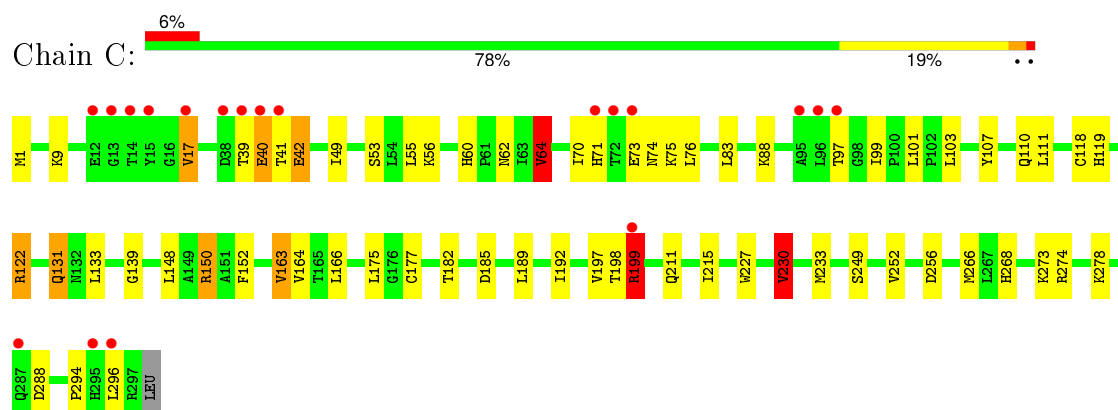
### 3 Residue-property plots

These plots are drawn for all protein, RNA and DNA chains in the entry. The first graphic for a chain summarises the proportions of errors displayed in the second graphic. The second graphic shows the sequence view annotated by issues in geometry and electron density. Residues are color-coded according to the number of geometric quality criteria for which they contain at least one outlier: green = 0, yellow = 1, orange = 2 and red = 3 or more. A red dot above a residue indicates a poor fit to the electron density ( $RSRZ > 2$ ). Stretches of 2 or more consecutive residues without any outlier are shown as a green connector. Residues present in the sample, but not in the model, are shown in grey.

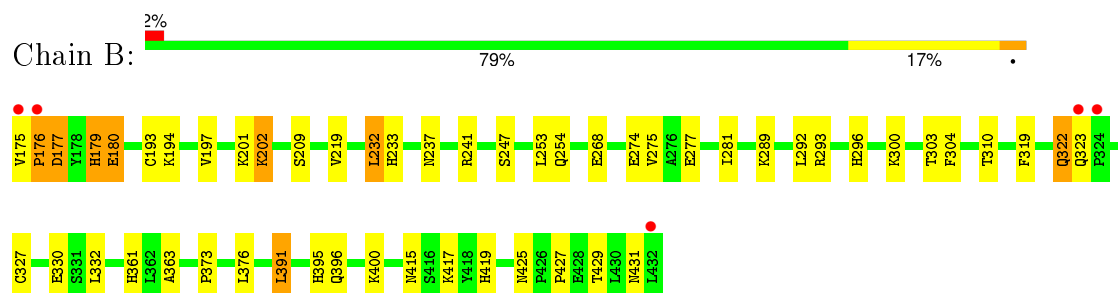
#### • Molecule 1: CELL DIVISION PROTEIN KINASE 2



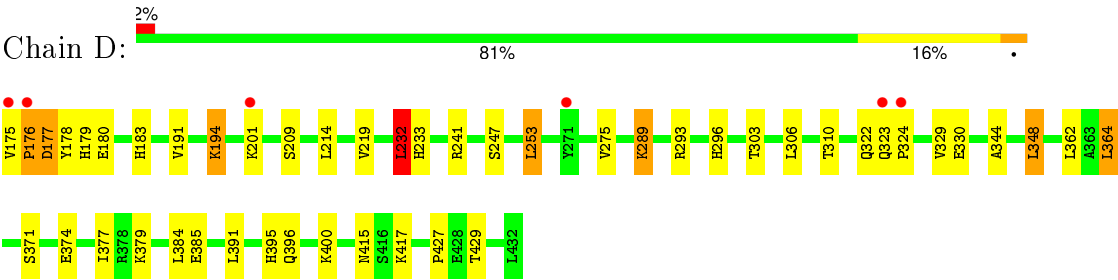
#### • Molecule 1: CELL DIVISION PROTEIN KINASE 2



#### • Molecule 2: CYCLIN A2



#### • Molecule 2: CYCLIN A2



## 4 Data and refinement statistics

Property	Value	Source
Space group	C 1 2 1	Depositor
Cell constants a, b, c, $\alpha$ , $\beta$ , $\gamma$	212.63Å 73.44Å 153.03Å 90.00° 129.54° 90.00°	Depositor
Resolution (Å)	20.00 – 2.40 19.85 – 2.40	Depositor EDS
% Data completeness (in resolution range)	89.5 (20.00-2.40) 89.5 (19.85-2.40)	Depositor EDS
$R_{merge}$	0.09	Depositor
$R_{sym}$	(Not available)	Depositor
$\langle I/\sigma(I) \rangle$ <sup>1</sup>	1.73 (at 2.41Å)	Xtriage
Refinement program	REFMAC 5.2.0019	Depositor
R, $R_{free}$	0.196 , 0.243 0.191 , 0.236	Depositor DCC
$R_{free}$ test set	3234 reflections (5.33%)	DCC
Wilson B-factor (Å <sup>2</sup> )	31.7	Xtriage
Anisotropy	0.076	Xtriage
Bulk solvent $k_{sol}$ (e/Å <sup>3</sup> ), $B_{sol}$ (Å <sup>2</sup> )	0.37 , 39.2	EDS
Estimated twinning fraction	No twinning to report.	Xtriage
L-test for twinning <sup>2</sup>	$\langle  L  \rangle = 0.50$ , $\langle L^2 \rangle = 0.34$	Xtriage
Outliers	0 of 63909 reflections	Xtriage
$F_o, F_c$ correlation	0.94	EDS
Total number of atoms	9256	wwPDB-VP
Average B, all atoms (Å <sup>2</sup> )	29.0	wwPDB-VP

Xtriage's analysis on translational NCS is as follows: *The largest off-origin peak in the Patterson function is 4.19% of the height of the origin peak. No significant pseudotranslation is detected.*

<sup>1</sup>Intensities estimated from amplitudes.

<sup>2</sup>Theoretical values of  $\langle |L| \rangle$ ,  $\langle L^2 \rangle$  for acentric reflections are 0.5, 0.375 respectively for untwinned datasets, and 0.333, 0.2 for perfectly twinned datasets.



## 5 Model quality

### 5.1 Standard geometry

Bond lengths and bond angles in the following residue types are not validated in this section: TPO, C95

The Z score for a bond length (or angle) is the number of standard deviations the observed value is removed from the expected value. A bond length (or angle) with  $|Z| > 5$  is considered an outlier worth inspection. RMSZ is the root-mean-square of all Z scores of the bond lengths (or angles).

Mol	Chain	Bond lengths		Bond angles	
		RMSZ	$\# Z  > 5$	RMSZ	$\# Z  > 5$
1	A	0.83	2/2420 (0.1%)	0.83	4/3285 (0.1%)
1	C	0.79	1/2428 (0.0%)	0.83	5/3295 (0.2%)
2	B	0.80	1/2134 (0.0%)	0.81	1/2897 (0.0%)
2	D	0.79	1/2134 (0.0%)	0.79	3/2897 (0.1%)
All	All	0.80	5/9116 (0.1%)	0.82	13/12374 (0.1%)

Chiral center outliers are detected by calculating the chiral volume of a chiral center and verifying if the center is modelled as a planar moiety or with the opposite hand. A planarity outlier is detected by checking planarity of atoms in a peptide group, atoms in a mainchain group or atoms of a sidechain that are expected to be planar.

Mol	Chain	#Chirality outliers	#Planarity outliers
1	A	1	1
1	C	1	1
All	All	2	2

All (5) bond length outliers are listed below:

Mol	Chain	Res	Type	Atoms	Z	Observed(Å)	Ideal(Å)
1	A	177	CYS	CB-SG	-9.50	1.66	1.82
1	A	118	CYS	CB-SG	-5.79	1.72	1.81
2	D	385	GLU	CG-CD	5.61	1.60	1.51
2	B	180	GLU	CG-CD	5.57	1.60	1.51
1	C	118	CYS	CB-SG	-5.16	1.73	1.81

All (13) bond angle outliers are listed below:

Mol	Chain	Res	Type	Atoms	Z	Observed(°)	Ideal(°)
1	A	150	ARG	NE-CZ-NH2	-10.75	114.92	120.30
1	C	150	ARG	NE-CZ-NH2	-10.14	115.23	120.30

*Continued on next page...*

*Continued from previous page...*

Mol	Chain	Res	Type	Atoms	Z	Observed(°)	Ideal(°)
1	C	150	ARG	NE-CZ-NH1	7.61	124.10	120.30
1	A	150	ARG	NE-CZ-NH1	6.27	123.44	120.30
1	A	78	LEU	CA-CB-CG	6.10	129.32	115.30
1	A	230	VAL	CB-CA-C	-5.95	100.09	111.40
1	C	230	VAL	CB-CA-C	-5.92	100.15	111.40
1	C	64	VAL	CB-CA-C	-5.83	100.32	111.40
2	D	362	LEU	CA-CB-CG	5.41	127.74	115.30
1	C	296	LEU	O-C-N	-5.21	114.36	122.70
2	B	391	LEU	CA-CB-CG	5.08	126.97	115.30
2	D	232	LEU	CA-CB-CG	5.04	126.88	115.30
2	D	241	ARG	NE-CZ-NH2	-5.02	117.79	120.30

All (2) chirality outliers are listed below:

Mol	Chain	Res	Type	Atom
1	A	160	TPO	CB
1	C	160	TPO	CB

All (2) planarity outliers are listed below:

Mol	Chain	Res	Type	Group
1	A	38	ASP	Peptide
1	C	40	GLU	Peptide

## 5.2 Too-close contacts ⓘ

In the following table, the Non-H and H(model) columns list the number of non-hydrogen atoms and hydrogen atoms in the chain respectively. The H(added) column lists the number of hydrogen atoms added and optimized by MolProbity. The Clashes column lists the number of clashes within the asymmetric unit, whereas Symm-Clashes lists symmetry related clashes.

Mol	Chain	Non-H	H(model)	H(added)	Clashes	Symm-Clashes
1	A	2370	0	2404	58	0
1	C	2378	0	2418	50	0
2	B	2084	0	2107	31	0
2	D	2084	0	2107	29	0
3	A	22	0	8	1	0
3	C	22	0	8	1	0
4	A	68	0	0	12	0
4	B	81	0	0	4	0
4	C	75	0	0	15	0

*Continued on next page...*

*Continued from previous page...*

Mol	Chain	Non-H	H(model)	H(added)	Clashes	Symm-Clashes
4	D	72	0	0	9	0
All	All	9256	0	9052	161	0

The all-atom clashscore is defined as the number of clashes found per 1000 atoms (including hydrogen atoms). The all-atom clashscore for this structure is 9.

All (161) close contacts within the same asymmetric unit are listed below, sorted by their clash magnitude.

Atom-1	Atom-2	Interatomic distance (Å)	Clash overlap (Å)
2:B:176:PRO:HD2	2:B:179:HIS:CE1	1.51	1.45
1:C:64:VAL:HG23	4:C:2016:HOH:O	1.55	1.06
1:C:88:LYS:HE3	1:C:131:GLN:NE2	1.71	1.03
1:C:177:CYS:HB2	4:C:2049:HOH:O	1.59	1.02
2:B:176:PRO:CD	2:B:179:HIS:CE1	2.44	0.99
1:A:177:CYS:HB3	4:A:2040:HOH:O	1.60	0.99
1:A:74:ASN:H	1:A:74:ASN:HD22	0.99	0.94
1:A:74:ASN:ND2	1:A:74:ASN:H	1.67	0.91
1:C:64:VAL:CG2	4:C:2016:HOH:O	2.09	0.90
2:B:415:ASN:HB3	4:B:2079:HOH:O	1.75	0.86
1:C:233:MET:SD	4:C:2049:HOH:O	2.35	0.84
1:C:198:THR:O	1:C:199:ARG:HB3	1.79	0.82
1:A:74:ASN:N	1:A:74:ASN:HD22	1.78	0.81
2:B:395:HIS:HE1	2:B:427:PRO:O	1.63	0.80
1:C:88:LYS:CE	1:C:131:GLN:NE2	2.45	0.80
2:B:176:PRO:HD2	2:B:179:HIS:HE1	1.41	0.77
2:D:176:PRO:HD2	2:D:179:HIS:CE1	2.19	0.77
1:A:233:MET:SD	4:A:2039:HOH:O	2.42	0.77
1:A:60:HIS:HD2	1:A:62:ASN:H	1.33	0.77
1:A:227:TRP:O	1:A:230:VAL:HG22	1.85	0.76
1:C:101:LEU:HB3	4:C:2022:HOH:O	1.86	0.75
1:A:14:THR:HB	4:A:2023:HOH:O	1.86	0.75
1:A:177:CYS:HB2	4:A:2039:HOH:O	1.86	0.74
1:A:61:PRO:O	1:A:142:LYS:HE2	1.87	0.73
1:C:101:LEU:CB	4:C:2022:HOH:O	2.36	0.72
1:A:60:HIS:CD2	1:A:62:ASN:H	2.09	0.70
1:A:39:THR:O	1:A:40:GLU:CB	2.41	0.69
1:C:88:LYS:CE	1:C:131:GLN:HE22	2.04	0.68
1:C:60:HIS:CD2	1:C:62:ASN:H	2.11	0.68
1:A:197:VAL:HG11	1:A:252:VAL:HG22	1.77	0.66
1:C:9:LYS:HD2	1:C:17:VAL:HG11	1.77	0.65
2:B:319:PHE:O	2:B:322:GLN:HG3	1.96	0.65

*Continued on next page...*

*Continued from previous page...*

Atom-1	Atom-2	Interatomic distance (Å)	Clash overlap (Å)
1:A:252:VAL:O	1:A:252:VAL:HG13	1.97	0.65
1:C:227:TRP:O	1:C:230:VAL:HG22	1.97	0.64
1:A:268:HIS:CD2	4:A:2057:HOH:O	2.49	0.64
2:D:233:HIS:HD2	4:D:2039:HOH:O	1.81	0.64
1:A:38:ASP:OD1	1:A:38:ASP:N	2.30	0.64
1:A:177:CYS:CB	4:A:2039:HOH:O	2.42	0.63
2:B:322:GLN:HB3	4:B:2046:HOH:O	1.98	0.63
1:A:131:GLN:HG3	4:A:2021:HOH:O	1.98	0.63
1:C:60:HIS:HD2	1:C:62:ASN:H	1.48	0.62
1:C:88:LYS:HE3	1:C:131:GLN:HE22	1.58	0.62
1:C:42:GLU:OE1	2:D:275:VAL:HG23	2.00	0.62
1:A:230:VAL:HA	1:A:233:MET:CE	2.30	0.61
1:A:88:LYS:HA	1:A:91:MET:HE2	1.81	0.60
1:A:101:LEU:O	1:A:101:LEU:HG	1.99	0.60
2:D:180:GLU:OE2	2:D:379:LYS:NZ	2.32	0.60
1:A:119:HIS:HD2	4:B:2007:HOH:O	1.84	0.60
1:C:198:THR:O	1:C:199:ARG:CB	2.49	0.59
1:A:71:HIS:CE1	2:B:296:HIS:CD2	2.91	0.59
1:C:175:LEU:CD1	1:C:233:MET:HE3	2.32	0.59
1:A:14:THR:HG22	4:A:2006:HOH:O	2.01	0.59
1:A:56:LYS:NZ	2:B:303:THR:O	2.36	0.58
1:C:64:VAL:CB	4:C:2016:HOH:O	2.48	0.57
1:C:64:VAL:HB	4:C:2016:HOH:O	2.04	0.57
1:C:9:LYS:HD2	1:C:17:VAL:CG1	2.34	0.57
1:A:172:GLU:O	1:A:177:CYS:HB2	2.05	0.57
1:C:101:LEU:HB2	4:C:2022:HOH:O	2.04	0.56
1:C:1:MET:HG2	1:C:70:ILE:HG21	1.86	0.56
1:A:129:LYS:HG3	1:A:131:GLN:HG2	1.88	0.56
2:B:322:GLN:NE2	2:B:330:GLU:OE2	2.39	0.55
1:A:20:LYS:HE3	1:A:82:PHE:CZ	2.41	0.55
2:B:296:HIS:HE1	2:B:300:LYS:NZ	2.05	0.55
3:C:1297:C95:O2	3:C:1297:C95:S1	2.65	0.54
1:A:230:VAL:HA	1:A:233:MET:HE3	1.89	0.54
2:B:233:HIS:HB3	2:B:310:THR:HB	1.89	0.54
3:A:1297:C95:O2	3:A:1297:C95:S1	2.66	0.54
2:D:233:HIS:HE1	4:D:2043:HOH:O	1.88	0.54
1:C:71:HIS:CD2	1:C:76:LEU:HD13	2.43	0.53
1:A:177:CYS:SG	4:A:2039:HOH:O	2.59	0.53
2:B:193:CYS:O	2:B:241:ARG:HD2	2.08	0.53
4:C:2072:HOH:O	2:D:177:ASP:HB3	2.09	0.52
2:B:395:HIS:CE1	2:B:427:PRO:O	2.54	0.52

*Continued on next page...*

*Continued from previous page...*

Atom-1	Atom-2	Interatomic distance (Å)	Clash overlap (Å)
1:C:227:TRP:CE3	1:C:230:VAL:HG13	2.45	0.52
1:A:161:HIS:HD2	4:A:2041:HOH:O	1.93	0.52
1:C:101:LEU:HB2	4:C:2008:HOH:O	2.09	0.51
1:A:38:ASP:OD2	1:A:41:THR:HB	2.11	0.51
1:C:175:LEU:HD13	1:C:233:MET:CE	2.41	0.51
1:C:197:VAL:HG11	1:C:252:VAL:HG22	1.92	0.51
1:A:119:HIS:HE1	1:A:185:ASP:OD2	1.94	0.51
1:A:252:VAL:CG1	1:A:252:VAL:O	2.58	0.51
1:A:122:ARG:HA	1:A:152:PHE:CE1	2.46	0.51
1:C:139:GLY:HA2	1:C:294:PRO:HD3	1.91	0.51
1:A:230:VAL:CG1	1:A:233:MET:CE	2.89	0.51
2:D:374:GLU:HA	2:D:377:ILE:HD12	1.93	0.50
2:B:327:CYS:HB3	2:B:419:HIS:CE1	2.47	0.50
2:D:396:GLN:HE21	2:D:400:LYS:NZ	2.09	0.50
2:D:324:PRO:HB2	4:D:2042:HOH:O	2.12	0.50
1:A:4:PHE:CE1	1:A:30:VAL:HG21	2.46	0.49
1:A:14:THR:HG21	1:A:148:LEU:HD22	1.92	0.49
1:A:230:VAL:HG12	1:A:233:MET:HE3	1.94	0.49
1:C:252:VAL:HG13	1:C:252:VAL:O	2.12	0.49
2:D:178:TYR:HB2	4:D:2007:HOH:O	2.11	0.49
1:C:133:LEU:HD11	1:C:192:ILE:HD13	1.94	0.49
1:C:175:LEU:HD12	1:C:233:MET:HE3	1.95	0.49
1:A:53:SER:HB3	2:B:304:PHE:O	2.13	0.49
1:A:237:LYS:HD3	1:A:240:PHE:CE1	2.48	0.48
2:B:275:VAL:HG21	2:B:292:LEU:HD21	1.94	0.48
1:A:88:LYS:HA	1:A:91:MET:CE	2.44	0.48
1:C:163:VAL:HG22	4:C:2033:HOH:O	2.13	0.48
1:A:136:ASN:ND2	1:A:140:ALA:HB3	2.29	0.48
1:A:178:LYS:HD3	1:A:179:TYR:CE2	2.49	0.48
1:A:230:VAL:HA	1:A:233:MET:HE2	1.95	0.47
1:C:268:HIS:CD2	4:C:2063:HOH:O	2.66	0.47
1:A:197:VAL:CG1	1:A:252:VAL:HG22	2.44	0.47
2:D:395:HIS:HE1	2:D:427:PRO:O	1.97	0.47
1:A:115:LEU:HD21	1:A:185:ASP:HB3	1.97	0.47
2:D:415:ASN:HB3	4:D:2070:HOH:O	2.15	0.47
1:C:71:HIS:CE1	2:D:296:HIS:CD2	3.03	0.47
4:C:2072:HOH:O	2:D:177:ASP:CB	2.63	0.46
2:B:274:GLU:HB2	2:B:277:GLU:HG3	1.97	0.46
1:C:227:TRP:CD2	1:C:230:VAL:HG13	2.50	0.46
1:A:163:VAL:HG22	4:A:2019:HOH:O	2.16	0.46
2:B:202:LYS:HD2	2:B:202:LYS:HA	1.67	0.46

*Continued on next page...*

*Continued from previous page...*

Atom-1	Atom-2	Interatomic distance (Å)	Clash overlap (Å)
1:C:175:LEU:HD13	1:C:233:MET:HE3	1.97	0.46
2:D:175:VAL:HG22	4:D:2003:HOH:O	2.16	0.45
1:A:157:ARG:NH1	2:B:268:GLU:OE2	2.39	0.45
2:B:361:HIS:CD2	2:B:391:LEU:HD21	2.51	0.45
2:D:344:ALA:HB1	2:D:348:LEU:HD22	1.98	0.45
2:D:322:GLN:NE2	2:D:330:GLU:OE2	2.50	0.45
2:B:289:LYS:O	2:B:293:ARG:HG3	2.16	0.45
2:D:233:HIS:HB3	2:D:310:THR:HB	1.97	0.45
2:D:289:LYS:HG2	2:D:293:ARG:HH21	1.82	0.45
1:C:119:HIS:CD2	1:C:182:THR:HB	2.52	0.45
2:B:332:LEU:HD23	2:B:363:ALA:HA	1.98	0.45
1:A:154:VAL:HG13	2:B:179:HIS:CE1	2.51	0.45
4:A:2066:HOH:O	2:B:177:ASP:HB3	2.16	0.45
1:C:211:GLN:O	1:C:215:ILE:HG13	2.18	0.44
2:B:176:PRO:CD	2:B:179:HIS:HE1	2.11	0.44
2:B:237:ASN:OD1	2:B:241:ARG:HD3	2.18	0.44
1:A:227:TRP:CE3	1:A:230:VAL:HG13	2.53	0.44
1:A:52:ILE:O	1:A:56:LYS:HG2	2.17	0.44
1:C:56:LYS:NZ	2:D:303:THR:O	2.42	0.44
2:D:329:VAL:HG11	2:D:364:LEU:HD13	2.00	0.44
2:B:219:VAL:HG22	2:B:232:LEU:HD11	2.00	0.43
1:A:265:GLN:NE2	1:A:275:ILE:HD12	2.33	0.43
1:C:119:HIS:HE1	1:C:185:ASP:OD2	2.02	0.43
1:A:230:VAL:HG12	1:A:233:MET:CE	2.48	0.43
1:A:33:LYS:NZ	1:A:51:GLU:OE1	2.50	0.43
2:D:183:HIS:HE1	4:D:2011:HOH:O	2.01	0.42
1:A:71:HIS:CD2	1:A:76:LEU:HD13	2.54	0.42
1:C:122:ARG:HA	1:C:152:PHE:CE1	2.54	0.42
2:D:176:PRO:HG2	2:D:179:HIS:CD2	2.55	0.42
1:C:62:ASN:ND2	1:C:110:GLN:HB3	2.34	0.42
2:D:322:GLN:HB3	4:D:2041:HOH:O	2.19	0.42
1:C:107:TYR:O	1:C:111:LEU:HG	2.20	0.42
1:C:101:LEU:O	1:C:101:LEU:HD12	2.19	0.42
1:A:270:ASP:HB3	1:A:273:LYS:HB2	2.02	0.42
1:A:230:VAL:HG13	1:A:233:MET:CE	2.50	0.41
1:C:99:ILE:HG23	1:C:103:LEU:HD23	2.02	0.41
2:D:219:VAL:HG22	2:D:232:LEU:HD11	2.02	0.41
1:C:273:LYS:HD2	4:C:2064:HOH:O	2.20	0.41
2:D:374:GLU:OE1	4:D:2050:HOH:O	2.21	0.41
2:D:191:VAL:O	2:D:194:LYS:HG3	2.20	0.41
2:B:254:GLN:NE2	4:B:2032:HOH:O	2.51	0.41

*Continued on next page...*

Continued from previous page...

Atom-1	Atom-2	Interatomic distance (Å)	Clash overlap (Å)
2:D:214:LEU:HD22	2:D:253:LEU:HD22	2.03	0.41
1:C:199:ARG:O	1:C:199:ARG:HG3	2.20	0.40
1:C:49:ILE:HG23	2:D:306:LEU:HD12	2.02	0.40
2:B:373:PRO:HD2	2:B:376:LEU:HD12	2.03	0.40
1:C:266:MET:O	1:C:274:ARG:HD3	2.21	0.40
2:B:396:GLN:HE21	2:B:400:LYS:NZ	2.19	0.40

There are no symmetry-related clashes.

## 5.3 Torsion angles [i](#)

### 5.3.1 Protein backbone [i](#)

In the following table, the Percentiles column shows the percent Ramachandran outliers of the chain as a percentile score with respect to all X-ray entries followed by that with respect to entries of similar resolution.

The Analysed column shows the number of residues for which the backbone conformation was analysed, and the total number of residues.

Mol	Chain	Analysed	Favoured	Allowed	Outliers	Percentiles	
1	A	293/298 (98%)	281 (96%)	8 (3%)	4 (1%)	14	19
1	C	294/298 (99%)	281 (96%)	10 (3%)	3 (1%)	19	28
2	B	256/258 (99%)	253 (99%)	2 (1%)	1 (0%)	39	56
2	D	256/258 (99%)	253 (99%)	2 (1%)	1 (0%)	39	56
All	All	1099/1112 (99%)	1068 (97%)	22 (2%)	9 (1%)	24	35

All (9) Ramachandran outliers are listed below:

Mol	Chain	Res	Type
1	A	41	THR
1	A	164	VAL
1	C	164	VAL
1	A	40	GLU
1	C	199	ARG
1	A	162	GLU
2	B	176	PRO
1	C	39	THR
2	D	176	PRO

### 5.3.2 Protein sidechains ⓘ

In the following table, the Percentiles column shows the percent sidechain outliers of the chain as a percentile score with respect to all X-ray entries followed by that with respect to entries of similar resolution.

The Analysed column shows the number of residues for which the sidechain conformation was analysed, and the total number of residues.

Mol	Chain	Analysed	Rotameric	Outliers	Percentiles	
1	A	257/262 (98%)	233 (91%)	24 (9%)	11	16
1	C	258/262 (98%)	233 (90%)	25 (10%)	10	15
2	B	232/232 (100%)	213 (92%)	19 (8%)	14	21
2	D	232/232 (100%)	216 (93%)	16 (7%)	19	30
All	All	979/988 (99%)	895 (91%)	84 (9%)	13	19

All (84) residues with a non-rotameric sidechain are listed below:

Mol	Chain	Res	Type
1	A	2	GLU
1	A	22	ARG
1	A	38	ASP
1	A	41	THR
1	A	47	THR
1	A	55	LEU
1	A	73	GLU
1	A	74	ASN
1	A	78	LEU
1	A	83	LEU
1	A	97	THR
1	A	122	ARG
1	A	131	GLN
1	A	148	LEU
1	A	150	ARG
1	A	163	VAL
1	A	166	LEU
1	A	230	VAL
1	A	232	SER
1	A	237	LYS
1	A	273	LYS
1	A	287	GLN
1	A	288	ASP
1	A	291	LYS

*Continued on next page...*



*Continued from previous page...*

Mol	Chain	Res	Type
2	B	175	VAL
2	B	177	ASP
2	B	179	HIS
2	B	180	GLU
2	B	194	LYS
2	B	197	VAL
2	B	201	LYS
2	B	202	LYS
2	B	209	SER
2	B	232	LEU
2	B	247	SER
2	B	253	LEU
2	B	281	ILE
2	B	322	GLN
2	B	323	GLN
2	B	417	LYS
2	B	425	ASN
2	B	429	THR
2	B	431	ASN
1	C	17	VAL
1	C	40	GLU
1	C	41	THR
1	C	42	GLU
1	C	53	SER
1	C	55	LEU
1	C	64	VAL
1	C	73	GLU
1	C	74	ASN
1	C	75	LYS
1	C	83	LEU
1	C	97	THR
1	C	122	ARG
1	C	131	GLN
1	C	148	LEU
1	C	150	ARG
1	C	163	VAL
1	C	166	LEU
1	C	189	LEU
1	C	199	ARG
1	C	230	VAL
1	C	249	SER
1	C	256	ASP

*Continued on next page...*

*Continued from previous page...*

Mol	Chain	Res	Type
1	C	278	LYS
1	C	288	ASP
2	D	177	ASP
2	D	194	LYS
2	D	201	LYS
2	D	209	SER
2	D	232	LEU
2	D	247	SER
2	D	253	LEU
2	D	289	LYS
2	D	323	GLN
2	D	348	LEU
2	D	364	LEU
2	D	371	SER
2	D	384	LEU
2	D	391	LEU
2	D	417	LYS
2	D	429	THR

Some sidechains can be flipped to improve hydrogen bonding and reduce clashes. All (29) such sidechains are listed below:

Mol	Chain	Res	Type
1	A	60	HIS
1	A	71	HIS
1	A	74	ASN
1	A	85	GLN
1	A	119	HIS
1	A	265	GLN
1	A	272	ASN
2	B	179	HIS
2	B	183	HIS
2	B	233	HIS
2	B	254	GLN
2	B	296	HIS
2	B	317	GLN
2	B	395	HIS
2	B	396	GLN
2	B	419	HIS
1	C	60	HIS
1	C	71	HIS
1	C	85	GLN
1	C	119	HIS

*Continued on next page...*

*Continued from previous page...*

Mol	Chain	Res	Type
1	C	131	GLN
1	C	265	GLN
1	C	268	HIS
2	D	183	HIS
2	D	233	HIS
2	D	254	GLN
2	D	296	HIS
2	D	395	HIS
2	D	396	GLN

### 5.3.3 RNA ⓘ

There are no RNA molecules in this entry.

## 5.4 Non-standard residues in protein, DNA, RNA chains ⓘ

2 non-standard protein/DNA/RNA residues are modelled in this entry.

In the following table, the Counts columns list the number of bonds (or angles) for which Mogul statistics could be retrieved, the number of bonds (or angles) that are observed in the model and the number of bonds (or angles) that are defined in the chemical component dictionary. The Link column lists molecule types, if any, to which the group is linked. The Z score for a bond length (or angle) is the number of standard deviations the observed value is removed from the expected value. A bond length (or angle) with  $|Z| > 2$  is considered an outlier worth inspection. RMSZ is the root-mean-square of all Z scores of the bond lengths (or angles).

Mol	Type	Chain	Res	Link	Bond lengths			Bond angles		
					Counts	RMSZ	$\# Z  > 2$	Counts	RMSZ	$\# Z  > 2$
1	TPO	A	160	1	8,10,11	0.75	0	7,14,16	2.22	2 (28%)
1	TPO	C	160	1	8,10,11	0.93	0	7,14,16	1.80	2 (28%)

In the following table, the Chirals column lists the number of chiral outliers, the number of chiral centers analysed, the number of these observed in the model and the number defined in the chemical component dictionary. Similar counts are reported in the Torsion and Rings columns. '-' means no outliers of that kind were identified.

Mol	Type	Chain	Res	Link	Chirals	Torsions	Rings
1	TPO	A	160	1	1/1/3/4	0/8/11/13	0/0/0/0
1	TPO	C	160	1	1/1/3/4	0/8/11/13	0/0/0/0

There are no bond length outliers.

All (4) bond angle outliers are listed below:

Mol	Chain	Res	Type	Atoms	Z	Observed(°)	Ideal(°)
1	A	160	TPO	O-C-CA	-2.27	119.44	125.44
1	C	160	TPO	O-C-CA	-2.22	119.58	125.44
1	C	160	TPO	CG2-CB-CA	3.48	120.25	113.17
1	A	160	TPO	CG2-CB-CA	4.74	122.81	113.17

All (2) chirality outliers are listed below:

Mol	Chain	Res	Type	Atom
1	A	160	TPO	CB
1	C	160	TPO	CB

There are no torsion outliers.

There are no ring outliers.

No monomer is involved in short contacts.

## 5.5 Carbohydrates [i](#)

There are no carbohydrates in this entry.

## 5.6 Ligand geometry [i](#)

2 ligands are modelled in this entry.

In the following table, the Counts columns list the number of bonds (or angles) for which Mogul statistics could be retrieved, the number of bonds (or angles) that are observed in the model and the number of bonds (or angles) that are defined in the chemical component dictionary. The Link column lists molecule types, if any, to which the group is linked. The Z score for a bond length (or angle) is the number of standard deviations the observed value is removed from the expected value. A bond length (or angle) with  $|Z| > 2$  is considered an outlier worth inspection. RMSZ is the root-mean-square of all Z scores of the bond lengths (or angles).

Mol	Type	Chain	Res	Link	Bond lengths			Bond angles		
					Counts	RMSZ	$\# Z  > 2$	Counts	RMSZ	$\# Z  > 2$
3	C95	A	1297	-	17,24,24	2.21	4 (23%)	19,34,34	2.51	4 (21%)
3	C95	C	1297	-	17,24,24	2.46	2 (11%)	19,34,34	2.33	4 (21%)

In the following table, the Chirals column lists the number of chiral outliers, the number of chiral centers analysed, the number of these observed in the model and the number defined in the chemical component dictionary. Similar counts are reported in the Torsion and Rings columns. '-' means

no outliers of that kind were identified.

Mol	Type	Chain	Res	Link	Chirals	Torsions	Rings
3	C95	A	1297	-	-	0/2/24/24	0/2/3/3
3	C95	C	1297	-	-	0/2/24/24	0/2/3/3

All (6) bond length outliers are listed below:

Mol	Chain	Res	Type	Atoms	Z	Observed(Å)	Ideal(Å)
3	C	1297	C95	C8-C7	-7.27	1.39	1.48
3	C	1297	C95	C9-S1	-5.96	1.67	1.74
3	A	1297	C95	C9-S1	-5.49	1.68	1.74
3	A	1297	C95	C8-C7	-5.09	1.42	1.48
3	A	1297	C95	C7-S1	-2.75	1.67	1.73
3	A	1297	C95	C13-C4	3.03	1.50	1.46

All (8) bond angle outliers are listed below:

Mol	Chain	Res	Type	Atoms	Z	Observed(°)	Ideal(°)
3	A	1297	C95	C6-C7-S1	-5.01	123.73	129.31
3	C	1297	C95	C6-C7-S1	-4.47	124.34	129.31
3	C	1297	C95	C18-C13-C4	-2.03	118.49	120.45
3	A	1297	C95	C3-C2-C1	2.02	108.08	106.30
3	A	1297	C95	C7-C8-N2	2.61	111.46	110.03
3	C	1297	C95	C7-C8-N2	3.32	111.84	110.03
3	C	1297	C95	C6-C7-C8	7.00	124.75	120.35
3	A	1297	C95	C6-C7-C8	8.03	125.40	120.35

There are no chirality outliers.

There are no torsion outliers.

There are no ring outliers.

2 monomers are involved in 2 short contacts:

Mol	Chain	Res	Type	Clashes	Symm-Clashes
3	A	1297	C95	1	0
3	C	1297	C95	1	0

## 5.7 Other polymers

There are no such residues in this entry.

## 5.8 Polymer linkage issues ⓘ

There are no chain breaks in this entry.

## 6 Fit of model and data ⓘ

### 6.1 Protein, DNA and RNA chains ⓘ

In the following table, the column labelled ‘#RSRZ> 2’ contains the number (and percentage) of RSRZ outliers, followed by percent RSRZ outliers for the chain as percentile scores relative to all X-ray entries and entries of similar resolution. The OWAB column contains the minimum, median, 95<sup>th</sup> percentile and maximum values of the occupancy-weighted average B-factor per residue. The column labelled ‘Q< 0.9’ lists the number of (and percentage) of residues with an average occupancy less than 0.9.

Mol	Chain	Analysed	<RSRZ>	#RSRZ>2		OWAB(Å <sup>2</sup> )	Q<0.9
1	A	295/298 (98%)	-0.10	18 (6%)	25 25	13, 27, 57, 66	9 (3%)
1	C	296/298 (99%)	-0.02	19 (6%)	23 23	14, 27, 56, 67	10 (3%)
2	B	258/258 (100%)	-0.34	5 (1%)	70 69	14, 25, 43, 63	0
2	D	258/258 (100%)	-0.38	6 (2%)	64 63	14, 25, 44, 63	0
All	All	1107/1112 (99%)	-0.20	48 (4%)	39 40	13, 26, 53, 67	19 (1%)

All (48) RSRZ outliers are listed below:

Mol	Chain	Res	Type	RSRZ
1	C	39	THR	8.7
1	A	14	THR	6.1
1	A	40	GLU	5.8
1	C	40	GLU	5.7
1	C	41	THR	5.7
1	C	14	THR	5.5
2	D	175	VAL	5.3
1	A	39	THR	5.2
1	C	96	LEU	5.0
1	A	96	LEU	4.7
1	A	295	HIS	4.5
2	B	324	PRO	4.4
1	A	41	THR	4.2
2	B	323	GLN	4.1
1	C	13	GLY	4.0
2	B	175	VAL	3.9
2	D	324	PRO	3.8
2	B	432	LEU	3.6
1	C	295	HIS	3.6
1	A	73	GLU	3.6
1	A	95	ALA	3.4

*Continued on next page...*

*Continued from previous page...*

Mol	Chain	Res	Type	RSRZ
1	C	199	ARG	3.3
2	B	176	PRO	3.3
2	D	323	GLN	3.2
1	A	38	ASP	3.1
1	C	97	THR	3.1
1	C	15	TYR	3.1
1	A	15	TYR	3.0
1	C	73	GLU	2.8
1	C	296	LEU	2.6
1	A	13	GLY	2.6
1	C	95	ALA	2.6
1	A	36	ARG	2.6
1	C	12	GLU	2.6
1	A	200	ARG	2.5
2	D	176	PRO	2.5
1	A	162	GLU	2.5
1	A	16	GLY	2.5
1	C	38	ASP	2.5
2	D	271	TYR	2.4
1	A	288	ASP	2.3
1	C	72	THR	2.3
1	A	12	GLU	2.3
1	C	287	GLN	2.2
1	C	71	HIS	2.1
2	D	201	LYS	2.1
1	A	250	LYS	2.1
1	C	17	VAL	2.1

## 6.2 Non-standard residues in protein, DNA, RNA chains [i](#)

In the following table, the Atoms column lists the number of modelled atoms in the group and the number defined in the chemical component dictionary. LLDF column lists the quality of electron density of the group with respect to its neighbouring residues in protein, DNA or RNA chains. The B-factors column lists the minimum, median, 95<sup>th</sup> percentile and maximum values of B factors of atoms in the group. The column labelled 'Q< 0.9' lists the number of atoms with occupancy less than 0.9.

Mol	Type	Chain	Res	Atoms	RSCC	RSR	LLDF	B-factors(Å <sup>2</sup> )	Q<0.9
1	TPO	A	160	11/12	0.98	0.10	-	17,21,24,24	0
1	TPO	C	160	11/12	0.98	0.10	-	18,22,25,25	0



### 6.3 Carbohydrates [i](#)

There are no carbohydrates in this entry.

### 6.4 Ligands [i](#)

In the following table, the Atoms column lists the number of modelled atoms in the group and the number defined in the chemical component dictionary. LLDF column lists the quality of electron density of the group with respect to its neighbouring residues in protein, DNA or RNA chains. The B-factors column lists the minimum, median, 95<sup>th</sup> percentile and maximum values of B factors of atoms in the group. The column labelled 'Q< 0.9' lists the number of atoms with occupancy less than 0.9.

Mol	Type	Chain	Res	Atoms	RSCC	RSR	LLDF	B-factors( $\text{\AA}^2$ )	Q<0.9
3	C95	C	1297	22/22	0.89	0.17	0.13	47,49,53,57	0
3	C95	A	1297	22/22	0.92	0.14	-0.20	49,51,56,57	0

### 6.5 Other polymers [i](#)

There are no such residues in this entry.