



Full wwPDB X-ray Structure Validation Report ⓘ

Jan 31, 2016 – 10:44 PM GMT

PDB ID : 1V1A
Title : 2-KETO-3-DEOXYGLUCONATE KINASE FROM THERMUS THERMOPHILUS WITH BOUND 2-KETO-3-DEOXYGLUCONATE AND ADP
Authors : Tahirov, T.H.; Inagaki, E.
Deposited on : 2004-04-12
Resolution : 2.10 Å(reported)

This is a Full wwPDB X-ray Structure Validation Report for a publicly released PDB entry.
We welcome your comments at validation@mail.wwpdb.org
A user guide is available at
<http://wwpdb.org/validation/2016/XrayValidationReportHelp>
with specific help available everywhere you see the ⓘ symbol.

The following versions of software and data (see [references ⓘ](#)) were used in the production of this report:

MolProbity : 4.02b-467
Mogul : 1.7 (RC4), CSD as536be (2015)
Xtriage (Phenix) : 1.9-1692
EDS : rb-20026688
Percentile statistics : 20151230.v01 (using entries in the PDB archive December 30th 2015)
Refmac : 5.8.0135
CCP4 : 6.5.0
Ideal geometry (proteins) : Engh & Huber (2001)
Ideal geometry (DNA, RNA) : Parkinson et al. (1996)
Validation Pipeline (wwPDB-VP) : trunk26865

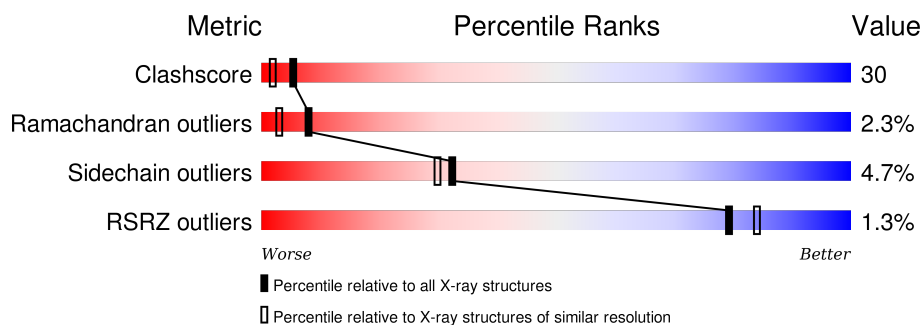
1 Overall quality at a glance

The following experimental techniques were used to determine the structure:

X-RAY DIFFRACTION

The reported resolution of this entry is 2.10 Å.

Percentile scores (ranging between 0-100) for global validation metrics of the entry are shown in the following graphic. The table shows the number of entries on which the scores are based.



Metric	Whole archive (#Entries)	Similar resolution (#Entries, resolution range(Å))
Clashscore	102246	4460 (2.10-2.10)
Ramachandran outliers	100387	4413 (2.10-2.10)
Sidechain outliers	100360	4414 (2.10-2.10)
RSRZ outliers	91569	3948 (2.10-2.10)

The table below summarises the geometric issues observed across the polymeric chains and their fit to the electron density. The red, orange, yellow and green segments on the lower bar indicate the fraction of residues that contain outliers for ≥ 3 , 2, 1 and 0 types of geometric quality criteria. A grey segment represents the fraction of residues that are not modelled. The numeric value for each fraction is indicated below the corresponding segment, with a dot representing fractions $\leq 5\%$. The upper red bar (where present) indicates the fraction of residues that have poor fit to the electron density. The numeric value is given above the bar.

Mol	Chain	Length	Quality of chain
1	A	309	<div> <div>%</div> <div> <div>48%</div> <div>45%</div> <div>• •</div> </div> </div>
1	B	309	<div> <div>2%</div> <div> <div>46%</div> <div>49%</div> <div>• •</div> </div> </div>

The following table lists non-polymeric compounds, carbohydrate monomers and non-standard residues in protein, DNA, RNA chains that are outliers for geometric or electron-density-fit criteria:

Mol	Type	Chain	Res	Chirality	Geometry	Clashes	Electron density
3	ADP	A	1303	-	-	-	X
3	ADP	B	1303	-	-	-	X

2 Entry composition [i](#)

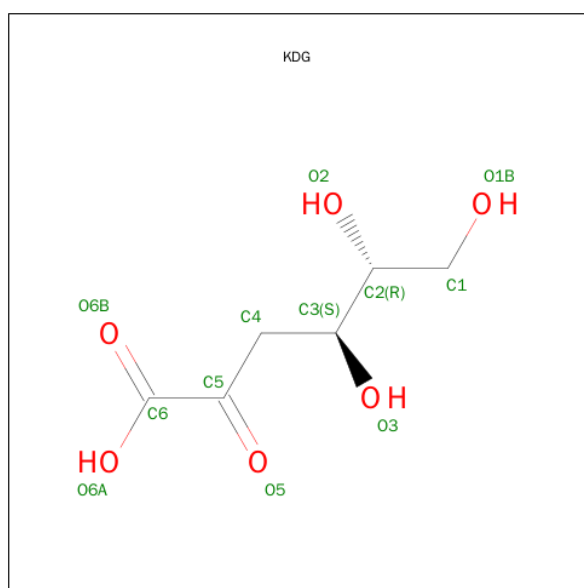
There are 4 unique types of molecules in this entry. The entry contains 4883 atoms, of which 0 are hydrogens and 0 are deuteriums.

In the tables below, the ZeroOcc column contains the number of atoms modelled with zero occupancy, the AltConf column contains the number of residues with at least one atom in alternate conformation and the Trace column contains the number of residues modelled with at most 2 atoms.

- Molecule 1 is a protein called 2-KETO-3-DEOXYGLUCONATE KINASE.

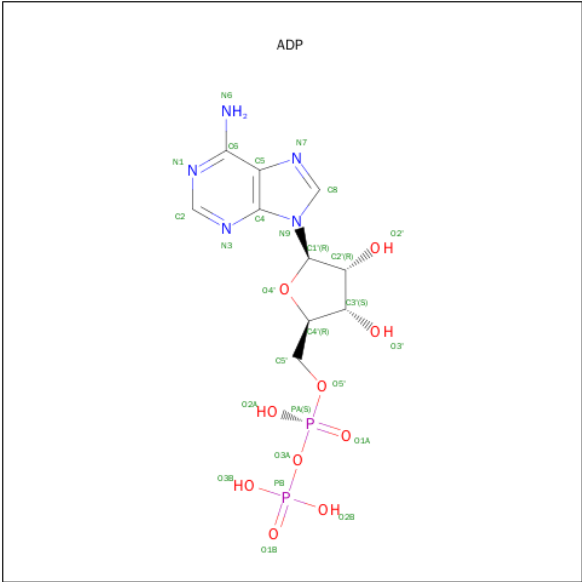
Mol	Chain	Residues	Atoms					ZeroOcc	AltConf	Trace
1	A	302	Total	C	N	O	S	0	0	1
			2297	1465	410	419	3			
1	B	302	Total	C	N	O	S	0	0	1
			2297	1465	410	419	3			

- Molecule 2 is 2-KETO-3-DEOXYGLUCONATE (three-letter code: KDG) (formula: $C_6H_{10}O_6$).



Mol	Chain	Residues	Atoms			ZeroOcc	AltConf
2	A	1	Total	C	O	0	0
			12	6	6		
2	B	1	Total	C	O	0	0
			12	6	6		

- Molecule 3 is ADENOSINE-5'-DIPHOSPHATE (three-letter code: ADP) (formula: $C_{10}H_{15}N_5O_{10}P_2$).



Mol	Chain	Residues	Atoms					ZeroOcc	AltConf
3	A	1	Total	C	N	O	P	0	0
			27	10	5	10	2		
3	B	1	Total	C	N	O	P	0	0
			27	10	5	10	2		

- Molecule 4 is water.

Mol	Chain	Residues	Atoms		ZeroOcc	AltConf
4	A	120	Total	O	0	0
			120	120		
4	B	91	Total	O	0	0
			91	91		

4 Data and refinement statistics

Property	Value	Source
Space group	P 63	Depositor
Cell constants a, b, c, α , β , γ	84.32Å 84.32Å 168.70Å 90.00° 90.00° 120.00°	Depositor
Resolution (Å)	29.82 – 2.10 29.82 – 2.10	Depositor EDS
% Data completeness (in resolution range)	95.7 (29.82-2.10) 97.6 (29.82-2.10)	Depositor EDS
R_{merge}	0.06	Depositor
R_{sym}	(Not available)	Depositor
$\langle I/\sigma(I) \rangle$ ¹	3.44 (at 2.10Å)	Xtriage
Refinement program	CNS 1.1	Depositor
R, R_{free}	0.180 , 0.268 0.185 , (Not available)	Depositor DCC
R_{free} test set	No test flags present.	DCC
Wilson B-factor (Å ²)	28.4	Xtriage
Anisotropy	0.218	Xtriage
Bulk solvent k_{sol} (e/Å ³), B_{sol} (Å ²)	(Not available) , (Not available)	EDS
Estimated twinning fraction	0.489 for h,-h-k,-l	Xtriage
L-test for twinning ²	$\langle L \rangle = 0.47$, $\langle L^2 \rangle = 0.29$	Xtriage
Outliers	0 of 38729 reflections	Xtriage
F_o, F_c correlation	0.96	EDS
Total number of atoms	4883	wwPDB-VP
Average B, all atoms (Å ²)	52.0	wwPDB-VP

Xtriage's analysis on translational NCS is as follows: *The largest off-origin peak in the Patterson function is 3.91% of the height of the origin peak. No significant pseudotranslation is detected.*

¹Intensities estimated from amplitudes.

²Theoretical values of $\langle |L| \rangle$, $\langle L^2 \rangle$ for acentric reflections are 0.5, 0.375 respectively for untwinned datasets, and 0.333, 0.2 for perfectly twinned datasets.

5 Model quality

5.1 Standard geometry

Bond lengths and bond angles in the following residue types are not validated in this section: KDG, ADP

The Z score for a bond length (or angle) is the number of standard deviations the observed value is removed from the expected value. A bond length (or angle) with $|Z| > 5$ is considered an outlier worth inspection. RMSZ is the root-mean-square of all Z scores of the bond lengths (or angles).

Mol	Chain	Bond lengths		Bond angles	
		RMSZ	$\# Z > 5$	RMSZ	$\# Z > 5$
1	A	0.40	0/2345	0.64	0/3179
1	B	0.40	0/2345	0.63	0/3179
All	All	0.40	0/4690	0.64	0/6358

There are no bond length outliers.

There are no bond angle outliers.

There are no chirality outliers.

There are no planarity outliers.

5.2 Too-close contacts

In the following table, the Non-H and H(model) columns list the number of non-hydrogen atoms and hydrogen atoms in the chain respectively. The H(added) column lists the number of hydrogen atoms added and optimized by MolProbity. The Clashes column lists the number of clashes within the asymmetric unit, whereas Symm-Clashes lists symmetry related clashes.

Mol	Chain	Non-H	H(model)	H(added)	Clashes	Symm-Clashes
1	A	2297	0	2298	136	0
1	B	2297	0	2298	147	0
2	A	12	0	9	0	0
2	B	12	0	9	1	0
3	A	27	0	12	1	0
3	B	27	0	12	2	0
4	A	120	0	0	16	0
4	B	91	0	0	12	0
All	All	4883	0	4638	279	0

The all-atom clashscore is defined as the number of clashes found per 1000 atoms (including hydrogen atoms). The all-atom clashscore for this structure is 30.

All (279) close contacts within the same asymmetric unit are listed below, sorted by their clash magnitude.

Atom-1	Atom-2	Interatomic distance (Å)	Clash overlap (Å)
1:B:260:GLY:HA2	1:B:265:LEU:HD12	1.43	0.98
1:A:91:ARG:HD2	1:A:247:VAL:HG21	1.46	0.98
1:A:276:LEU:HD11	1:A:300:LEU:HG	1.46	0.97
1:B:267:VAL:HG22	1:B:270:ARG:HH21	1.31	0.94
1:A:182:ARG:HG3	1:A:182:ARG:HH11	1.34	0.89
1:B:267:VAL:HG22	1:B:270:ARG:NH2	1.93	0.83
1:A:166:TYR:CE2	1:A:168:GLN:HG2	2.12	0.83
1:B:36:GLU:OE1	1:B:132:SER:HB3	1.80	0.81
1:A:172:SER:OG	1:A:175:GLU:HG3	1.81	0.80
1:A:36:GLU:OE1	1:A:132:SER:HB3	1.83	0.78
1:A:58:GLU:HB2	4:A:2031:HOH:O	1.85	0.77
1:B:35:ALA:O	1:B:39:VAL:HG23	1.85	0.77
1:A:91:ARG:HB2	4:A:2006:HOH:O	1.85	0.75
1:A:300:LEU:O	1:A:301:LEU:HB2	1.86	0.75
1:B:147:LEU:HA	1:B:150:MET:HE3	1.69	0.74
1:A:69:LEU:HD13	1:A:76:LEU:HD21	1.68	0.74
1:B:176:ALA:O	1:B:180:LEU:HG	1.88	0.74
1:A:276:LEU:HD11	1:A:300:LEU:CG	2.18	0.73
1:A:182:ARG:NH1	1:A:182:ARG:HG3	2.03	0.73
1:A:276:LEU:HD21	1:A:300:LEU:HD23	1.70	0.73
1:B:199:LEU:HD23	1:B:199:LEU:O	1.88	0.73
1:A:201:PHE:HB2	1:A:207:ALA:HB2	1.71	0.72
1:B:177:ARG:HA	1:B:180:LEU:HD12	1.70	0.72
1:B:222:ALA:O	1:B:238:ALA:HB3	1.90	0.71
1:A:91:ARG:NH1	1:A:247:VAL:HG11	2.06	0.71
1:A:166:TYR:HE2	1:A:168:GLN:HG2	1.52	0.71
1:A:192:LEU:HD21	1:A:197:ALA:HB2	1.72	0.71
1:A:176:ALA:O	1:A:180:LEU:HG	1.91	0.71
1:B:154:LYS:HB3	4:B:2053:HOH:O	1.90	0.71
1:B:252:ALA:HB2	1:B:281:VAL:HG21	1.73	0.70
1:B:201:PHE:CD2	1:B:207:ALA:HA	2.28	0.69
1:B:46:LEU:HD11	1:B:277:LEU:HD21	1.75	0.69
1:A:184:LEU:HD13	1:A:184:LEU:O	1.93	0.69
1:A:277:LEU:HD13	1:A:292:PRO:HD2	1.73	0.69
1:A:113:LEU:O	1:A:142:ALA:HA	1.94	0.68
1:B:134:ILE:HG23	1:B:170:LEU:CD1	2.24	0.66
1:B:6:THR:OG1	1:B:36:GLU:HB3	1.97	0.65
1:B:7:ALA:O	1:B:36:GLU:HG2	1.97	0.65
1:A:230:ASP:O	1:A:232:ARG:N	2.30	0.64
1:B:118:PHE:O	1:B:120:PRO:HD3	1.97	0.64

Continued on next page...

Continued from previous page...

Atom-1	Atom-2	Interatomic distance (Å)	Clash overlap (Å)
1:A:76:LEU:HD22	1:A:79:PHE:CD2	2.33	0.64
1:B:260:GLY:CA	1:B:265:LEU:HD12	2.22	0.63
1:B:230:ASP:C	1:B:232:ARG:H	2.00	0.63
1:A:38:ASN:HB3	4:A:2106:HOH:O	1.98	0.63
1:B:132:SER:HB2	4:B:2059:HOH:O	1.98	0.63
1:A:56:VAL:HG23	1:A:81:ARG:HG2	1.81	0.63
1:A:174:GLU:H	1:A:174:GLU:CD	2.03	0.62
1:A:199:LEU:HD23	1:A:199:LEU:O	2.00	0.62
1:A:266:PRO:HA	4:A:2098:HOH:O	1.99	0.62
1:A:88:LEU:C	1:A:88:LEU:HD12	2.20	0.61
1:B:68:ARG:HB2	4:B:2022:HOH:O	2.01	0.61
1:A:91:ARG:CD	1:A:247:VAL:HG21	2.27	0.61
1:A:6:THR:HB	4:A:2062:HOH:O	2.01	0.61
1:A:219:LYS:HB3	3:A:1303:ADP:H5'2	1.81	0.61
1:A:123:LEU:HD13	1:A:153:ALA:HB2	1.83	0.61
1:A:90:LEU:HD12	1:A:90:LEU:N	2.15	0.60
1:A:120:PRO:HB3	1:A:152:GLU:CG	2.31	0.60
1:A:230:ASP:C	1:A:232:ARG:H	2.05	0.60
1:B:228:PHE:CE1	1:B:233:ARG:HG3	2.37	0.60
1:B:159:ARG:HG3	4:B:2048:HOH:O	2.01	0.60
1:A:226:TRP:CD1	1:A:235:GLU:HG3	2.37	0.60
1:A:69:LEU:HD13	1:A:76:LEU:CD2	2.32	0.59
1:B:162:LEU:HD12	1:B:163:ASP:H	1.67	0.59
1:A:103:TYR:CD2	1:A:105:ARG:HD2	2.38	0.59
1:B:224:GLY:HA2	1:B:238:ALA:HB2	1.84	0.59
1:B:117:ALA:HB3	1:B:145:PHE:CE1	2.38	0.58
1:B:203:ARG:HB3	1:B:205:GLU:OE1	2.04	0.58
1:B:173:PRO:HA	1:B:200:LEU:CD2	2.34	0.58
1:B:130:HIS:HA	1:B:161:SER:O	2.04	0.58
1:B:260:GLY:HA3	1:B:270:ARG:HG2	1.85	0.58
1:B:239:PHE:O	3:B:1303:ADP:H2	1.87	0.58
1:A:164:VAL:O	1:A:165:ASN:C	2.42	0.58
1:B:76:LEU:HD22	1:B:79:PHE:CD2	2.38	0.58
1:B:256:GLY:CA	1:B:277:LEU:HD22	2.34	0.58
1:A:129:LEU:HD22	1:A:153:ALA:HB2	1.84	0.58
1:B:295:GLU:H	1:B:295:GLU:CD	2.07	0.58
1:A:124:GLU:HA	1:A:156:ARG:HG2	1.86	0.57
1:A:76:LEU:HD22	1:A:79:PHE:CG	2.39	0.57
1:B:120:PRO:HB3	1:B:152:GLU:HG2	1.86	0.57
1:B:162:LEU:HD11	4:B:2049:HOH:O	2.04	0.57
1:A:126:VAL:O	1:A:158:VAL:HG22	2.05	0.57

Continued on next page...

Continued from previous page...

Atom-1	Atom-2	Interatomic distance (Å)	Clash overlap (Å)
1:A:244:VAL:HG21	1:A:283:ALA:O	2.05	0.57
1:A:120:PRO:HB3	1:A:152:GLU:HG3	1.88	0.56
1:B:77:THR:HG22	1:B:78:HIS:CD2	2.41	0.56
1:A:168:GLN:OE1	1:A:199:LEU:HD11	2.06	0.56
1:B:292:PRO:HD2	4:B:2083:HOH:O	2.04	0.56
1:B:126:VAL:O	1:B:158:VAL:HG13	2.06	0.56
1:B:56:VAL:CG2	1:B:81:ARG:HG2	2.35	0.56
1:B:76:LEU:HD13	1:B:79:PHE:HD2	1.71	0.56
1:B:57:GLY:O	1:B:81:ARG:HD2	2.05	0.56
1:B:56:VAL:HG23	1:B:81:ARG:HG2	1.87	0.56
1:A:220:ARG:CZ	1:A:223:LYS:HD2	2.34	0.56
1:A:220:ARG:NH1	1:A:223:LYS:HD2	2.21	0.56
1:B:90:LEU:N	1:B:90:LEU:HD12	2.20	0.56
1:A:126:VAL:O	1:A:158:VAL:HG13	2.06	0.55
1:A:53:VAL:HG22	1:A:78:HIS:HB2	1.88	0.55
1:A:276:LEU:HD11	1:A:300:LEU:CD2	2.36	0.55
1:A:78:HIS:HB3	4:A:2028:HOH:O	2.06	0.55
1:A:64:MET:HE3	1:B:23:ARG:HA	1.89	0.55
1:A:46:LEU:HD22	1:A:297:LEU:HD11	1.88	0.54
1:A:177:ARG:HA	1:A:180:LEU:HD12	1.89	0.54
1:A:1:MET:HG2	4:A:2002:HOH:O	2.07	0.54
1:B:224:GLY:HA3	1:B:236:GLY:O	2.07	0.54
1:B:63:ALA:O	1:B:67:GLU:HG3	2.08	0.54
1:B:117:ALA:O	1:B:118:PHE:HB3	2.07	0.54
1:B:219:LYS:HB3	3:B:1303:ADP:H5'2	1.88	0.54
1:A:153:ALA:HB1	1:A:158:VAL:HB	1.90	0.53
1:A:80:ARG:HB2	1:A:80:ARG:NH1	2.23	0.53
1:B:248:GLY:C	1:B:281:VAL:HG11	2.28	0.53
1:A:3:GLU:O	1:A:127:ARG:HB2	2.08	0.53
1:B:173:PRO:HA	1:B:200:LEU:HD22	1.90	0.53
1:B:10:PRO:HG3	1:B:52:PHE:CZ	2.43	0.53
1:B:120:PRO:HB3	1:B:152:GLU:CG	2.39	0.52
1:B:270:ARG:NH1	4:B:2076:HOH:O	2.43	0.52
1:A:41:VAL:HG13	1:A:72:GLU:HG3	1.91	0.52
1:B:129:LEU:HD22	1:B:153:ALA:HB2	1.91	0.52
1:A:80:ARG:HB2	1:A:80:ARG:HH11	1.74	0.52
1:A:296:ASP:O	1:A:299:VAL:HG22	2.09	0.51
1:B:184:LEU:N	1:B:185:PRO:CD	2.72	0.51
1:A:300:LEU:O	1:A:301:LEU:CB	2.58	0.51
1:B:201:PHE:CZ	1:B:211:LEU:HD11	2.45	0.51
1:B:7:ALA:HB2	1:B:53:VAL:HB	1.93	0.51

Continued on next page...

Continued from previous page...

Atom-1	Atom-2	Interatomic distance (Å)	Clash overlap (Å)
1:B:131:LEU:O	1:B:162:LEU:HD12	2.11	0.51
1:B:50:VAL:HG13	1:B:74:VAL:HG13	1.91	0.51
1:A:130:HIS:O	1:A:131:LEU:HD23	2.11	0.51
1:A:94:LEU:HB2	1:A:98:GLN:O	2.11	0.51
1:B:215:GLU:HG3	1:B:229:VAL:HG22	1.92	0.51
1:A:228:PHE:CE1	1:A:233:ARG:HG3	2.46	0.51
1:B:55:ARG:NH1	1:B:80:ARG:HG2	2.26	0.50
1:B:280:SER:HB3	1:B:290:GLY:O	2.12	0.50
1:A:266:PRO:HD2	1:A:269:GLU:CD	2.32	0.50
1:A:94:LEU:HD23	1:A:99:GLY:HA2	1.93	0.50
1:A:205:GLU:HA	1:A:208:LEU:HD12	1.93	0.50
1:B:10:PRO:HB3	1:B:37:VAL:HG21	1.92	0.50
1:B:267:VAL:CG2	1:B:270:ARG:HH21	2.15	0.50
1:A:173:PRO:HB3	1:A:200:LEU:HD23	1.94	0.50
1:B:260:GLY:HA2	1:B:265:LEU:CD1	2.29	0.50
1:B:91:ARG:NH2	1:B:287:ASP:OD1	2.40	0.50
1:B:139:SER:H	1:B:142:ALA:HB3	1.76	0.50
1:A:55:ARG:HG3	1:A:55:ARG:HH11	1.76	0.49
1:B:126:VAL:O	1:B:158:VAL:HG22	2.11	0.49
1:B:163:ASP:HA	1:B:191:PHE:HB2	1.95	0.49
1:B:256:GLY:HA2	1:B:277:LEU:HD22	1.93	0.49
1:B:261:ALA:O	1:B:264:GLY:N	2.37	0.49
1:B:220:ARG:HD2	1:B:226:TRP:CD2	2.46	0.49
1:B:1:MET:O	1:B:49:LYS:HD3	2.12	0.49
1:B:139:SER:HB3	1:B:141:GLU:OE2	2.12	0.49
1:B:68:ARG:O	1:B:72:GLU:HG2	2.13	0.49
1:B:130:HIS:O	1:B:131:LEU:HD23	2.12	0.49
1:A:224:GLY:O	1:A:225:ALA:HB2	2.13	0.49
1:A:137:ALA:HB2	1:A:171:TRP:CE2	2.48	0.49
1:B:224:GLY:CA	1:B:238:ALA:HB2	2.43	0.49
1:A:7:ALA:O	1:A:36:GLU:HG2	2.13	0.48
1:B:224:GLY:H	1:B:238:ALA:HB2	1.77	0.48
1:A:193:SER:O	1:A:194:GLU:C	2.51	0.48
1:A:284:SER:OG	1:A:290:GLY:HA3	2.12	0.48
1:A:9:GLU:OE1	1:A:105:ARG:NH2	2.43	0.48
1:B:300:LEU:O	1:B:301:LEU:C	2.51	0.48
1:B:119:ASP:OD1	1:B:121:ASP:HB2	2.14	0.48
1:A:104:TYR:OH	1:B:86:THR:O	2.24	0.48
1:B:234:VAL:HG12	1:B:235:GLU:N	2.29	0.48
1:A:82:ALA:O	1:A:83:PRO:C	2.52	0.48
1:B:12:VAL:HG21	1:B:61:LEU:HB3	1.95	0.48

Continued on next page...

Continued from previous page...

Atom-1	Atom-2	Interatomic distance (Å)	Clash overlap (Å)
1:B:197:ALA:O	1:B:201:PHE:HB2	2.14	0.48
1:B:224:GLY:N	1:B:238:ALA:HB2	2.29	0.48
1:A:55:ARG:HD3	1:A:80:ARG:O	2.14	0.48
1:A:120:PRO:HG3	1:A:148:TRP:CZ2	2.48	0.48
1:B:123:LEU:HA	1:B:126:VAL:HG21	1.96	0.48
1:B:222:ALA:O	1:B:238:ALA:CB	2.61	0.47
1:B:5:VAL:O	1:B:129:LEU:HD12	2.13	0.47
1:A:116:GLY:HA2	1:A:148:TRP:CZ2	2.49	0.47
1:B:162:LEU:HD12	1:B:163:ASP:N	2.28	0.47
1:A:68:ARG:CZ	4:A:2040:HOH:O	2.63	0.47
1:A:60:GLU:OE2	1:B:23:ARG:HB3	2.14	0.47
1:A:120:PRO:HB3	1:A:152:GLU:HG2	1.97	0.46
1:A:150:MET:HB2	1:A:160:VAL:HG21	1.97	0.46
1:B:159:ARG:HA	1:B:188:ASP:OD1	2.16	0.46
1:A:68:ARG:NH2	4:A:2040:HOH:O	2.48	0.46
1:A:206:GLU:HA	1:A:206:GLU:OE2	2.15	0.46
1:B:217:VAL:HG11	1:B:253:PHE:HE2	1.81	0.46
1:A:258:LEU:O	1:A:262:VAL:HG23	2.16	0.46
1:A:66:GLU:OE1	1:A:70:ARG:NH2	2.49	0.46
1:A:168:GLN:OE1	1:A:199:LEU:HD21	2.16	0.46
1:B:37:VAL:HG13	1:B:69:LEU:HD21	1.97	0.45
1:A:204:VAL:HG11	1:A:218:LEU:HD21	1.98	0.45
1:B:88:LEU:HD12	1:B:88:LEU:C	2.36	0.45
1:B:68:ARG:NH1	1:B:288:HIS:NE2	2.63	0.45
1:A:120:PRO:C	1:A:122:TYR:N	2.69	0.45
1:A:112:ALA:O	1:A:113:LEU:C	2.54	0.45
1:B:112:ALA:O	1:B:113:LEU:C	2.55	0.45
1:A:36:GLU:HB3	4:A:2062:HOH:O	2.16	0.45
1:B:177:ARG:NE	1:B:200:LEU:O	2.46	0.45
1:B:129:LEU:CD2	1:B:153:ALA:HB2	2.47	0.45
1:A:138:LEU:O	1:A:139:SER:HB3	2.17	0.45
1:A:68:ARG:NE	4:A:2040:HOH:O	2.49	0.44
1:A:241:VAL:HG22	1:A:242:GLU:N	2.32	0.44
1:A:76:LEU:HB3	1:A:79:PHE:HB3	1.99	0.44
1:B:229:VAL:HG12	1:B:230:ASP:OD2	2.18	0.44
1:A:90:LEU:CD1	1:A:90:LEU:N	2.79	0.44
1:A:156:ARG:HE	1:A:156:ARG:HB2	1.38	0.44
1:A:167:ARG:HB2	1:A:170:LEU:HG	2.00	0.44
1:A:56:VAL:CG2	1:A:81:ARG:HG2	2.45	0.44
1:B:254:ALA:O	1:B:258:LEU:HG	2.16	0.44
1:A:239:PHE:CE1	1:A:301:LEU:HG	2.53	0.44

Continued on next page...

Continued from previous page...

Atom-1	Atom-2	Interatomic distance (Å)	Clash overlap (Å)
1:A:56:VAL:HG13	1:A:79:PHE:CE1	2.52	0.44
1:A:265:LEU:HD13	1:A:269:GLU:OE2	2.17	0.44
1:B:89:TYR:HD2	1:B:101:VAL:HG13	1.82	0.44
1:B:166:TYR:CE2	1:B:199:LEU:HD22	2.53	0.44
1:B:105:ARG:NH1	2:B:1302:KDG:O6B	2.50	0.44
1:B:11:LEU:HD11	1:B:105:ARG:CZ	2.47	0.44
1:A:12:VAL:HG21	1:A:61:LEU:HB3	2.00	0.44
1:A:49:LYS:HE2	4:A:2026:HOH:O	2.17	0.44
1:B:230:ASP:C	1:B:232:ARG:N	2.69	0.44
1:B:194:GLU:HG3	1:B:220:ARG:HA	1.99	0.44
1:A:257:TYR:CD1	1:A:270:ARG:HB3	2.52	0.44
1:A:91:ARG:NH2	1:A:245:ASP:OD2	2.51	0.44
1:B:39:VAL:O	1:B:43:LEU:HG	2.18	0.44
1:B:229:VAL:O	1:B:232:ARG:HB3	2.18	0.44
1:A:136:PRO:HA	1:A:143:ARG:HA	1.99	0.44
1:B:165:ASN:ND2	4:B:2059:HOH:O	2.50	0.43
1:A:55:ARG:HH11	1:A:55:ARG:CG	2.31	0.43
1:B:294:ARG:HH11	1:B:297:LEU:HB2	1.83	0.43
1:B:50:VAL:HG22	1:B:51:GLY:N	2.33	0.43
1:B:267:VAL:HA	1:B:270:ARG:HE	1.83	0.43
1:B:18:GLU:OE2	1:B:25:LYS:NZ	2.37	0.43
1:B:204:VAL:O	1:B:207:ALA:HB3	2.18	0.43
1:A:92:GLU:O	1:A:99:GLY:HA3	2.17	0.43
1:B:203:ARG:O	1:B:204:VAL:C	2.56	0.43
1:A:56:VAL:O	1:A:81:ARG:HA	2.18	0.43
1:A:174:GLU:N	1:A:174:GLU:CD	2.71	0.43
1:A:297:LEU:O	1:A:299:VAL:N	2.52	0.43
1:B:182:ARG:O	1:B:182:ARG:HD3	2.19	0.43
1:B:135:THR:HB	1:B:136:PRO:CD	2.49	0.43
1:A:189:LEU:HA	1:A:215:GLU:O	2.19	0.43
1:A:182:ARG:NH1	1:A:182:ARG:CG	2.74	0.43
1:B:222:ALA:C	1:B:224:GLY:H	2.22	0.43
1:A:270:ARG:NH2	4:A:2101:HOH:O	2.52	0.42
1:B:139:SER:O	1:B:142:ALA:N	2.52	0.42
1:A:120:PRO:C	1:A:122:TYR:H	2.22	0.42
1:A:222:ALA:O	1:A:238:ALA:HB3	2.18	0.42
1:B:257:TYR:CE1	1:B:270:ARG:HB3	2.54	0.42
1:B:170:LEU:O	1:B:171:TRP:HB3	2.20	0.42
1:B:239:PHE:HB2	1:B:279:ALA:HB2	2.02	0.42
1:B:161:SER:OG	1:B:191:PHE:HE1	2.03	0.42
1:B:250:GLY:O	1:B:253:PHE:HB3	2.20	0.42

Continued on next page...

Continued from previous page...

Atom-1	Atom-2	Interatomic distance (Å)	Clash overlap (Å)
1:B:175:GLU:HG3	1:B:175:GLU:H	1.66	0.42
1:B:147:LEU:CA	1:B:150:MET:HE3	2.47	0.41
1:B:173:PRO:O	1:B:176:ALA:HB3	2.20	0.41
1:A:81:ARG:HG3	4:A:2038:HOH:O	2.19	0.41
1:B:220:ARG:HD2	1:B:226:TRP:CE2	2.55	0.41
1:B:296:ASP:O	1:B:299:VAL:HG22	2.19	0.41
1:B:19:PRO:HB2	4:B:2006:HOH:O	2.20	0.41
1:A:82:ALA:O	1:A:83:PRO:O	2.38	0.41
1:B:146:SER:O	1:B:149:ALA:HB3	2.19	0.41
1:A:285:ARG:HB3	4:A:2105:HOH:O	2.19	0.41
1:A:60:GLU:HB3	1:B:22:LEU:HB3	2.02	0.41
1:B:40:ALA:O	1:B:50:VAL:HG11	2.21	0.41
1:B:162:LEU:HD21	4:B:2049:HOH:O	2.19	0.41
1:A:95:PRO:HG3	4:A:2011:HOH:O	2.20	0.41
1:B:94:LEU:HD12	1:B:98:GLN:HB3	2.02	0.41
1:A:163:ASP:O	1:A:164:VAL:C	2.60	0.41
1:A:252:ALA:HB2	1:A:281:VAL:HG21	2.02	0.41
1:A:293:TYR:O	1:A:294:ARG:C	2.60	0.41
1:B:15:VAL:HA	1:B:16:PRO:HD3	1.96	0.40
1:A:66:GLU:OE2	1:A:81:ARG:HD2	2.21	0.40
1:B:189:LEU:HD22	4:B:2056:HOH:O	2.21	0.40
1:A:114:ALA:O	1:A:117:ALA:HB2	2.21	0.40
1:B:232:ARG:NH2	1:B:268:GLU:OE1	2.55	0.40
1:B:159:ARG:NH2	4:B:2056:HOH:O	2.54	0.40
1:A:42:ALA:O	1:A:46:LEU:HG	2.22	0.40
1:B:9:GLU:HA	1:B:10:PRO:HD3	1.90	0.40
1:B:27:LEU:HD23	1:B:27:LEU:HA	1.94	0.40
1:A:201:PHE:CD2	1:A:207:ALA:HA	2.56	0.40
1:B:46:LEU:HA	1:B:46:LEU:HD23	1.89	0.40
1:B:120:PRO:HG3	1:B:148:TRP:HZ2	1.86	0.40
1:B:76:LEU:HD13	1:B:79:PHE:CD2	2.53	0.40
1:B:76:LEU:HD22	1:B:79:PHE:HB3	2.04	0.40
1:A:135:THR:HB	1:A:136:PRO:CD	2.52	0.40
1:A:114:ALA:HA	1:A:141:GLU:O	2.21	0.40

There are no symmetry-related clashes.

5.3 Torsion angles [i](#)

5.3.1 Protein backbone [i](#)

In the following table, the Percentiles column shows the percent Ramachandran outliers of the chain as a percentile score with respect to all X-ray entries followed by that with respect to entries of similar resolution.

The Analysed column shows the number of residues for which the backbone conformation was analysed, and the total number of residues.

Mol	Chain	Analysed	Favoured	Allowed	Outliers	Percentiles	
1	A	300/309 (97%)	262 (87%)	28 (9%)	10 (3%)	5	1
1	B	300/309 (97%)	268 (89%)	28 (9%)	4 (1%)	15	9
All	All	600/618 (97%)	530 (88%)	56 (9%)	14 (2%)	8	3

All (14) Ramachandran outliers are listed below:

Mol	Chain	Res	Type
1	A	301	LEU
1	B	301	LEU
1	A	113	LEU
1	A	231	GLY
1	A	243	ALA
1	A	298	GLU
1	A	83	PRO
1	A	225	ALA
1	A	244	VAL
1	B	113	LEU
1	A	194	GLU
1	A	202	GLY
1	B	149	ALA
1	B	267	VAL

5.3.2 Protein sidechains [i](#)

In the following table, the Percentiles column shows the percent sidechain outliers of the chain as a percentile score with respect to all X-ray entries followed by that with respect to entries of similar resolution.

The Analysed column shows the number of residues for which the sidechain conformation was analysed, and the total number of residues.

Mol	Chain	Analysed	Rotameric	Outliers	Percentiles	
1	A	224/231 (97%)	213 (95%)	11 (5%)	31	28
1	B	224/231 (97%)	214 (96%)	10 (4%)	34	32
All	All	448/462 (97%)	427 (95%)	21 (5%)	32	30

All (21) residues with a non-rotameric sidechain are listed below:

Mol	Chain	Res	Type
1	A	18	GLU
1	A	93	TYR
1	A	156	ARG
1	A	171	TRP
1	A	182	ARG
1	A	184	LEU
1	A	229	VAL
1	A	232	ARG
1	A	276	LEU
1	A	294	ARG
1	A	301	LEU
1	B	6	THR
1	B	127	ARG
1	B	132	SER
1	B	139	SER
1	B	150	MET
1	B	171	TRP
1	B	182	ARG
1	B	184	LEU
1	B	212	SER
1	B	237	SER

Some sidechains can be flipped to improve hydrogen bonding and reduce clashes. All (3) such sidechains are listed below:

Mol	Chain	Res	Type
1	A	275	ASN
1	B	21	HIS
1	B	78	HIS

5.3.3 RNA ⓘ

There are no RNA molecules in this entry.

5.4 Non-standard residues in protein, DNA, RNA chains ⓘ

There are no non-standard protein/DNA/RNA residues in this entry.

5.5 Carbohydrates ⓘ

There are no carbohydrates in this entry.

5.6 Ligand geometry ⓘ

4 ligands are modelled in this entry.

In the following table, the Counts columns list the number of bonds (or angles) for which Mogul statistics could be retrieved, the number of bonds (or angles) that are observed in the model and the number of bonds (or angles) that are defined in the chemical component dictionary. The Link column lists molecule types, if any, to which the group is linked. The Z score for a bond length (or angle) is the number of standard deviations the observed value is removed from the expected value. A bond length (or angle) with $|Z| > 2$ is considered an outlier worth inspection. RMSZ is the root-mean-square of all Z scores of the bond lengths (or angles).

Mol	Type	Chain	Res	Link	Bond lengths			Bond angles		
					Counts	RMSZ	# $ Z > 2$	Counts	RMSZ	# $ Z > 2$
2	KDG	A	1302	-	8,11,11	1.01	1 (12%)	6,14,14	0.80	0
3	ADP	A	1303	-	22,29,29	2.23	7 (31%)	27,45,45	1.96	7 (25%)
2	KDG	B	1302	-	8,11,11	1.13	0	6,14,14	0.88	0
3	ADP	B	1303	-	22,29,29	2.13	5 (22%)	27,45,45	1.94	8 (29%)

In the following table, the Chirals column lists the number of chiral outliers, the number of chiral centers analysed, the number of these observed in the model and the number defined in the chemical component dictionary. Similar counts are reported in the Torsion and Rings columns. '-' means no outliers of that kind were identified.

Mol	Type	Chain	Res	Link	Chirals	Torsions	Rings
2	KDG	A	1302	-	-	0/10/14/14	0/0/0/0
3	ADP	A	1303	-	-	0/12/32/32	0/3/3/3
2	KDG	B	1302	-	-	0/10/14/14	0/0/0/0
3	ADP	B	1303	-	-	0/12/32/32	0/3/3/3

All (13) bond length outliers are listed below:

Mol	Chain	Res	Type	Atoms	Z	Observed(Å)	Ideal(Å)
3	B	1303	ADP	O5'-C5'	-4.35	1.27	1.44
3	A	1303	ADP	O5'-C5'	-4.27	1.27	1.44

Continued on next page...

Continued from previous page...

Mol	Chain	Res	Type	Atoms	Z	Observed(Å)	Ideal(Å)
3	B	1303	ADP	PB-O1B	-2.63	1.42	1.51
3	A	1303	ADP	PB-O2B	-2.45	1.45	1.54
3	B	1303	ADP	PB-O2B	-2.44	1.45	1.54
3	A	1303	ADP	PB-O1B	-2.40	1.43	1.51
3	A	1303	ADP	PA-O2A	-2.06	1.46	1.54
2	A	1302	KDG	C4-C5	2.06	1.54	1.51
3	A	1303	ADP	C2-N3	2.26	1.36	1.32
3	B	1303	ADP	C4-N3	4.39	1.42	1.35
3	B	1303	ADP	O4'-C1'	4.52	1.46	1.41
3	A	1303	ADP	C4-N3	4.85	1.42	1.35
3	A	1303	ADP	O4'-C1'	5.24	1.47	1.41

All (15) bond angle outliers are listed below:

Mol	Chain	Res	Type	Atoms	Z	Observed(°)	Ideal(°)
3	A	1303	ADP	PA-O3A-PB	-4.87	116.34	132.67
3	B	1303	ADP	PA-O3A-PB	-4.71	116.87	132.67
3	B	1303	ADP	C5'-C4'-C3'	-3.99	99.38	115.21
3	A	1303	ADP	C5'-C4'-C3'	-3.83	100.01	115.21
3	A	1303	ADP	N3-C2-N1	-3.36	126.33	128.89
3	B	1303	ADP	N3-C2-N1	-2.67	126.85	128.89
3	B	1303	ADP	C1'-N9-C4	-2.24	123.56	126.94
3	A	1303	ADP	C4'-O4'-C1'	-2.07	107.44	109.72
3	B	1303	ADP	C4'-O4'-C1'	-2.03	107.49	109.72
3	B	1303	ADP	C4-C5-N7	2.72	111.98	109.48
3	A	1303	ADP	C4-C5-N7	2.92	112.17	109.48
3	A	1303	ADP	O3A-PA-O5'	2.95	110.75	102.94
3	A	1303	ADP	O4'-C4'-C3'	2.96	111.12	105.15
3	B	1303	ADP	O3A-PA-O5'	3.09	111.14	102.94
3	B	1303	ADP	O4'-C4'-C3'	3.31	111.81	105.15

There are no chirality outliers.

There are no torsion outliers.

There are no ring outliers.

3 monomers are involved in 4 short contacts:

Mol	Chain	Res	Type	Clashes	Symm-Clashes
3	A	1303	ADP	1	0
2	B	1302	KDG	1	0
3	B	1303	ADP	2	0

5.7 Other polymers

There are no such residues in this entry.

5.8 Polymer linkage issues

There are no chain breaks in this entry.

6 Fit of model and data [i](#)

6.1 Protein, DNA and RNA chains [i](#)

In the following table, the column labelled ‘#RSRZ> 2’ contains the number (and percentage) of RSRZ outliers, followed by percent RSRZ outliers for the chain as percentile scores relative to all X-ray entries and entries of similar resolution. The OWAB column contains the minimum, median, 95th percentile and maximum values of the occupancy-weighted average B-factor per residue. The column labelled ‘Q< 0.9’ lists the number of (and percentage) of residues with an average occupancy less than 0.9.

Mol	Chain	Analysed	<RSRZ>	#RSRZ>2	OWAB(Å ²)	Q<0.9
1	A	302/309 (97%)	-0.35	3 (0%) 84 87	14, 44, 88, 108	0
1	B	302/309 (97%)	-0.15	5 (1%) 73 78	15, 52, 92, 123	0
All	All	604/618 (97%)	-0.25	8 (1%) 79 84	14, 48, 90, 123	0

All (8) RSRZ outliers are listed below:

Mol	Chain	Res	Type	RSRZ
1	B	302	LYS	3.9
1	A	301	LEU	3.2
1	B	97	GLY	2.9
1	B	197	ALA	2.8
1	B	153	ALA	2.6
1	A	238	ALA	2.3
1	B	198	GLU	2.2
1	A	299	VAL	2.1

6.2 Non-standard residues in protein, DNA, RNA chains [i](#)

There are no non-standard protein/DNA/RNA residues in this entry.

6.3 Carbohydrates [i](#)

There are no carbohydrates in this entry.

6.4 Ligands [i](#)

In the following table, the Atoms column lists the number of modelled atoms in the group and the number defined in the chemical component dictionary. LLDF column lists the quality of electron density of the group with respect to its neighbouring residues in protein, DNA or RNA chains.

The B-factors column lists the minimum, median, 95th percentile and maximum values of B factors of atoms in the group. The column labelled 'Q< 0.9' lists the number of atoms with occupancy less than 0.9.

Mol	Type	Chain	Res	Atoms	RSCC	RSR	LLDF	B-factors(\AA^2)	Q<0.9
3	ADP	A	1303	27/27	0.79	0.20	2.16	136,145,181,188	0
3	ADP	B	1303	27/27	0.83	0.17	2.01	117,130,178,184	0
2	KDG	B	1302	12/12	0.96	0.12	1.04	26,42,58,65	0
2	KDG	A	1302	12/12	0.95	0.11	0.55	20,35,51,58	0

6.5 Other polymers [i](#)

There are no such residues in this entry.