



# Full wwPDB X-ray Structure Validation Report ⓘ

Feb 1, 2016 – 09:46 PM GMT

PDB ID : 4V8F  
Title : Crystal structure analysis of ribosomal decoding (near-cognate tRNA-ttyr complex with paromomycin).  
Authors : Jenner, L.; Demeshkina, N.; Yusupov, M.; Yusupova, G.  
Deposited on : 2011-12-07  
Resolution : 3.30 Å(reported)

This is a Full wwPDB X-ray Structure Validation Report for a publicly released PDB entry.  
We welcome your comments at [validation@mail.wwpdb.org](mailto:validation@mail.wwpdb.org)  
A user guide is available at  
<http://wwpdb.org/validation/2016/XrayValidationReportHelp>  
with specific help available everywhere you see the ⓘ symbol.

---

The following versions of software and data (see [references ⓘ](#)) were used in the production of this report:

MolProbity : **NOT EXECUTED**  
Mogul : **NOT EXECUTED**  
Xtriage (Phenix) : **NOT EXECUTED**  
EDS : **NOT EXECUTED**  
Percentile statistics : 20151230.v01 (using entries in the PDB archive December 30th 2015)  
Ideal geometry (proteins) : Engh & Huber (2001)  
Ideal geometry (DNA, RNA) : Parkinson et al. (1996)  
Validation Pipeline (wwPDB-VP) : trunk26865

## 1 Overall quality at a glance

The following experimental techniques were used to determine the structure:

*X-RAY DIFFRACTION*

The reported resolution of this entry is 3.30 Å.

There are no percentiles available for this entry.

MolProbity and EDS were not executed - the sequence quality summary graphics cannot be shown.

## 2 Entry composition

There are 58 unique types of molecules in this entry. The entry contains 304031 atoms, of which 0 are hydrogens and 0 are deuteriums.

In the tables below, the ZeroOcc column contains the number of atoms modelled with zero occupancy, the AltConf column contains the number of residues with at least one atom in alternate conformation and the Trace column contains the number of residues modelled with at most 2 atoms.

- Molecule 1 is a RNA chain called RNA (2912-MER).

Mol	Chain	Residues	Atoms					ZeroOcc	AltConf	Trace
1	AA	2912	Total	C	N	O	P	0	0	0
			62707	27911	11722	20163	2911			
1	DA	2907	Total	C	N	O	P	0	0	0
			62607	27866	11712	20123	2906			

There are 14 discrepancies between the modelled and reference sequences:

Chain	Residue	Modelled	Actual	Comment	Reference
AA	161	U	-	INSERTION	GB AP008226.1
AA	654A	A	G	CONFLICT	GB AP008226.1
AA	654E	C	G	CONFLICT	GB AP008226.1
AA	654P	G	C	CONFLICT	GB AP008226.1
AA	654T	A	C	CONFLICT	GB AP008226.1
AA	1058	U	G	CONFLICT	GB AP008226.1
AA	1080	A	C	CONFLICT	GB AP008226.1
DA	168	U	-	insertion	GB AP008226.1
DA	654A	A	G	CONFLICT	GB AP008226.1
DA	654E	C	G	CONFLICT	GB AP008226.1
DA	654P	G	C	CONFLICT	GB AP008226.1
DA	654T	A	C	CONFLICT	GB AP008226.1
DA	1058	U	G	CONFLICT	GB AP008226.1
DA	1080	A	C	CONFLICT	GB AP008226.1

- Molecule 2 is a RNA chain called 5S RIBOSOMAL RNA.

Mol	Chain	Residues	Atoms					ZeroOcc	AltConf	Trace
2	AB	122	Total	C	N	O	P	0	0	0
			2617	1166	486	844	121			
2	DB	122	Total	C	N	O	P	0	0	0
			2617	1166	486	844	121			

- Molecule 3 is a protein called 50S ribosomal protein L2.

Mol	Chain	Residues	Atoms					ZeroOcc	AltConf	Trace
3	AD	272	Total	C	N	O	S	0	0	0
			2115	1335	420	357	3			
3	DD	272	Total	C	N	O	S	0	0	0
			2115	1335	420	357	3			

- Molecule 4 is a protein called 50S ribosomal protein L3.

Mol	Chain	Residues	Atoms					ZeroOcc	AltConf	Trace
4	AE	205	Total	C	N	O	S	0	0	0
			1568	991	300	271	6			
4	DE	205	Total	C	N	O	S	0	0	0
			1568	991	300	271	6			

- Molecule 5 is a protein called 50S ribosomal protein L4.

Mol	Chain	Residues	Atoms					ZeroOcc	AltConf	Trace
5	AF	202	Total	C	N	O	S	0	0	0
			1585	1011	297	275	2			
5	DF	208	Total	C	N	O	S	0	0	0
			1627	1037	304	283	3			

- Molecule 6 is a protein called 50S ribosomal protein L5.

Mol	Chain	Residues	Atoms					ZeroOcc	AltConf	Trace
6	AG	181	Total	C	N	O	S	0	0	0
			1474	942	268	260	4			
6	DG	181	Total	C	N	O	S	0	0	0
			1474	942	268	260	4			

- Molecule 7 is a protein called 50S ribosomal protein L6.

Mol	Chain	Residues	Atoms					ZeroOcc	AltConf	Trace
7	AH	170	Total	C	N	O	S	0	0	0
			1307	829	245	232	1			
7	DH	170	Total	C	N	O	S	0	0	0
			1307	829	245	232	1			

- Molecule 8 is a protein called 50S ribosomal protein L9.

Mol	Chain	Residues	Atoms					ZeroOcc	AltConf	Trace
8	AK	146	Total	C	N	O	S	0	0	0
			1136	726	201	208	1			

*Continued on next page...*

*Continued from previous page...*

Mol	Chain	Residues	Atoms					ZeroOcc	AltConf	Trace
8	DK	146	Total	C	N	O	S	0	0	0
			1136	726	201	208	1			

- Molecule 9 is a protein called 50S ribosomal protein L13.

Mol	Chain	Residues	Atoms					ZeroOcc	AltConf	Trace
9	AM	138	Total	C	N	O	S	0	0	0
			1104	712	206	182	4			
9	DM	138	Total	C	N	O	S	0	0	0
			1104	712	206	182	4			

- Molecule 10 is a protein called 50S ribosomal protein L14.

Mol	Chain	Residues	Atoms					ZeroOcc	AltConf	Trace
10	AN	122	Total	C	N	O	S	0	0	0
			933	588	171	170	4			
10	DN	122	Total	C	N	O	S	0	0	0
			933	588	171	170	4			

- Molecule 11 is a protein called 50S ribosomal protein L15.

Mol	Chain	Residues	Atoms					ZeroOcc	AltConf	Trace
11	AO	150	Total	C	N	O	S	0	0	0
			1145	712	232	198	3			
11	DO	150	Total	C	N	O	S	0	0	0
			1145	712	232	198	3			

- Molecule 12 is a protein called 50S ribosomal protein L16.

Mol	Chain	Residues	Atoms					ZeroOcc	AltConf	Trace
12	AP	141	Total	C	N	O	S	0	0	0
			1122	715	212	188	7			
12	DP	141	Total	C	N	O	S	0	0	0
			1122	715	212	188	7			

- Molecule 13 is a protein called 50S ribosomal protein L17.

Mol	Chain	Residues	Atoms					ZeroOcc	AltConf	Trace
13	A0	118	Total	C	N	O	S	0	0	0
			968	604	203	160	1			
13	D0	117	Total	C	N	O	S	0	0	0
			960	599	202	159				

- Molecule 14 is a protein called 50S ribosomal protein L18.

Mol	Chain	Residues	Atoms				ZeroOcc	AltConf	Trace
14	AQ	111	Total	C	N	O	0	0	0
			882	556	176	150			
14	DQ	111	Total	C	N	O	0	0	0
			882	556	176	150			

- Molecule 15 is a protein called 50S ribosomal protein L19.

Mol	Chain	Residues	Atoms					ZeroOcc	AltConf	Trace
15	AR	137	Total	C	N	O	S	0	0	0
			1141	710	234	196	1			
15	DR	137	Total	C	N	O	S	0	0	0
			1141	710	234	196	1			

- Molecule 16 is a protein called 50S ribosomal protein L20.

Mol	Chain	Residues	Atoms					ZeroOcc	AltConf	Trace
16	A1	117	Total	C	N	O	S	0	0	0
			964	610	202	151	1			
16	D1	117	Total	C	N	O	S	0	0	0
			964	610	202	151	1			

- Molecule 17 is a protein called 50S ribosomal protein L21.

Mol	Chain	Residues	Atoms					ZeroOcc	AltConf	Trace
17	A2	101	Total	C	N	O	S	0	0	0
			779	501	142	135	1			
17	D2	101	Total	C	N	O	S	0	0	0
			779	501	142	135	1			

- Molecule 18 is a protein called 50S ribosomal protein L22.

Mol	Chain	Residues	Atoms					ZeroOcc	AltConf	Trace
18	AS	113	Total	C	N	O	S	0	0	0
			900	566	177	155	2			
18	DS	113	Total	C	N	O	S	0	0	0
			900	566	177	155	2			

- Molecule 19 is a protein called 50S ribosomal protein L23.

Mol	Chain	Residues	Atoms				ZeroOcc	AltConf	Trace
19	AT	92	Total	C	N	O	0	0	0
			725	471	131	123			
19	DT	92	Total	C	N	O	0	0	0
			725	471	131	123			

- Molecule 20 is a protein called 50S ribosomal protein L24.

Mol	Chain	Residues	Atoms					ZeroOcc	AltConf	Trace
20	AU	102	Total	C	N	O	S	0	0	0
			785	505	150	125	5			
20	DU	102	Total	C	N	O	S	0	0	0
			785	505	150	125	5			

- Molecule 21 is a protein called 50S ribosomal protein L25.

Mol	Chain	Residues	Atoms					ZeroOcc	AltConf	Trace
21	AV	175	Total	C	N	O	S	0	0	0
			1397	892	251	251	3			
21	DV	179	Total	C	N	O	S	0	0	0
			1428	911	255	259	3			

- Molecule 22 is a protein called 50S ribosomal protein L27.

Mol	Chain	Residues	Atoms					ZeroOcc	AltConf	Trace
22	A3	76	Total	C	N	O	S	0	0	0
			607	376	128	102	1			
22	D3	77	Total	C	N	O	S	0	0	0
			613	379	129	104	1			

- Molecule 23 is a protein called 50S ribosomal protein L28.

Mol	Chain	Residues	Atoms					ZeroOcc	AltConf	Trace
23	AZ	97	Total	C	N	O	S	0	0	0
			763	481	150	131	1			
23	DZ	97	Total	C	N	O	S	0	0	0
			763	481	150	131	1			

- Molecule 24 is a protein called 50S ribosomal protein L29.

Mol	Chain	Residues	Atoms					ZeroOcc	AltConf	Trace
24	AW	66	Total	C	N	O	S	0	0	0
			558	346	113	98	1			

*Continued on next page...*

*Continued from previous page...*

Mol	Chain	Residues	Atoms					ZeroOcc	AltConf	Trace
24	DW	66	Total	C	N	O	S	0	0	0
			558	346	113	98	1			

- Molecule 25 is a protein called 50S ribosomal protein L30.

Mol	Chain	Residues	Atoms					ZeroOcc	AltConf	Trace
25	AX	59	Total	C	N	O		0	0	0
			469	298	90	81				
25	DX	59	Total	C	N	O		0	0	0
			469	298	90	81				

- Molecule 26 is a protein called 50S ribosomal protein L31.

Mol	Chain	Residues	Atoms					ZeroOcc	AltConf	Trace
26	A4	66	Total	C	N	O	S	0	0	0
			533	335	96	97	5			
26	D4	63	Total	C	N	O	S	0	0	0
			515	326	93	91	5			

- Molecule 27 is a protein called 50S ribosomal protein L32.

Mol	Chain	Residues	Atoms					ZeroOcc	AltConf	Trace
27	A5	59	Total	C	N	O	S	0	0	0
			459	288	90	76	5			
27	D5	59	Total	C	N	O	S	0	0	0
			459	288	90	76	5			

- Molecule 28 is a protein called 50S ribosomal protein L33.

Mol	Chain	Residues	Atoms					ZeroOcc	AltConf	Trace
28	A6	45	Total	C	N	O	S	0	0	0
			389	241	79	65	4			
28	D6	45	Total	C	N	O	S	0	0	0
			389	241	79	65	4			

- Molecule 29 is a protein called 50S ribosomal protein L34.

Mol	Chain	Residues	Atoms					ZeroOcc	AltConf	Trace
29	A7	45	Total	C	N	O	S	0	0	0
			391	240	97	52	2			
29	D7	45	Total	C	N	O	S	0	0	0
			391	240	97	52	2			



- Molecule 30 is a protein called 50S ribosomal protein L35.

Mol	Chain	Residues	Atoms					ZeroOcc	AltConf	Trace
30	A8	60	Total	C	N	O	S	0	0	0
			480	306	98	74	2			
30	D8	60	Total	C	N	O	S	0	0	0
			480	306	98	74	2			

- Molecule 31 is a RNA chain called 16S ribosomal RNA.

Mol	Chain	Residues	Atoms					ZeroOcc	AltConf	Trace
31	BA	1502	Total	C	N	O	P	0	0	0
			32284	14370	5982	10431	1501			
31	CA	1502	Total	C	N	O	P	0	0	0
			32287	14370	5982	10433	1502			

- Molecule 32 is a protein called 30S RIBOSOMAL PROTEIN S2.

Mol	Chain	Residues	Atoms					ZeroOcc	AltConf	Trace
32	BE	237	Total	C	N	O	S	0	0	0
			1924	1228	344	347	5			
32	CE	237	Total	C	N	O	S	0	0	0
			1924	1228	344	347	5			

- Molecule 33 is a protein called 30S RIBOSOMAL PROTEIN S3.

Mol	Chain	Residues	Atoms					ZeroOcc	AltConf	Trace
33	BF	205	Total	C	N	O	S	0	0	0
			1605	1011	313	280	1			
33	CF	206	Total	C	N	O	S	0	0	0
			1612	1016	314	281	1			

- Molecule 34 is a protein called 30S RIBOSOMAL PROTEIN S4.

Mol	Chain	Residues	Atoms					ZeroOcc	AltConf	Trace
34	BG	208	Total	C	N	O	S	0	0	0
			1703	1066	339	291	7			
34	CG	208	Total	C	N	O	S	0	0	0
			1703	1066	339	291	7			

- Molecule 35 is a protein called 30S RIBOSOMAL PROTEIN S5.

Mol	Chain	Residues	Atoms					ZeroOcc	AltConf	Trace
35	BH	151	Total	C	N	O	S	0	0	0
			1155	729	218	204	4			
35	CH	151	Total	C	N	O	S	0	0	0
			1155	729	218	204	4			

- Molecule 36 is a protein called 30S RIBOSOMAL PROTEIN S6.

Mol	Chain	Residues	Atoms					ZeroOcc	AltConf	Trace
36	BI	101	Total	C	N	O	S	0	0	0
			843	531	155	154	3			
36	CI	101	Total	C	N	O	S	0	0	0
			843	531	155	154	3			

- Molecule 37 is a protein called 30S RIBOSOMAL PROTEIN S7.

Mol	Chain	Residues	Atoms					ZeroOcc	AltConf	Trace
37	BJ	155	Total	C	N	O	S	0	0	0
			1257	781	252	218	6			
37	CJ	155	Total	C	N	O	S	0	0	0
			1257	781	252	218	6			

- Molecule 38 is a protein called 30S RIBOSOMAL PROTEIN S8.

Mol	Chain	Residues	Atoms					ZeroOcc	AltConf	Trace
38	BK	138	Total	C	N	O	S	0	0	0
			1116	705	215	193	3			
38	CK	138	Total	C	N	O	S	0	0	0
			1116	705	215	193	3			

- Molecule 39 is a protein called 30S RIBOSOMAL PROTEIN S9.

Mol	Chain	Residues	Atoms					ZeroOcc	AltConf	Trace
39	BL	127	Total	C	N	O		0	0	0
			1010	639	197	174				
39	CL	127	Total	C	N	O		0	0	0
			1010	639	197	174				

- Molecule 40 is a protein called 30S RIBOSOMAL PROTEIN S10.

Mol	Chain	Residues	Atoms					ZeroOcc	AltConf	Trace
40	BM	99	Total	C	N	O	S	0	0	0
			801	504	157	139	1			

*Continued on next page...*

*Continued from previous page...*

Mol	Chain	Residues	Atoms					ZeroOcc	AltConf	Trace
40	CM	99	Total	C	N	O	S	0	0	0
			801	504	157	139	1			

- Molecule 41 is a protein called 30S RIBOSOMAL PROTEIN S11.

Mol	Chain	Residues	Atoms					ZeroOcc	AltConf	Trace
41	BN	119	Total	C	N	O	S	0	0	0
			885	549	168	165	3			
41	CN	119	Total	C	N	O	S	0	0	0
			885	549	168	165	3			

- Molecule 42 is a protein called 30S RIBOSOMAL PROTEIN S12.

Mol	Chain	Residues	Atoms					ZeroOcc	AltConf	Trace
42	BO	125	Total	C	N	O	S	0	0	0
			975	614	196	164	1			
42	CO	125	Total	C	N	O	S	0	0	0
			975	614	196	164	1			

- Molecule 43 is a protein called 30S RIBOSOMAL PROTEIN S13.

Mol	Chain	Residues	Atoms					ZeroOcc	AltConf	Trace
43	BP	116	Total	C	N	O	S	0	0	0
			928	574	191	161	2			
43	CP	117	Total	C	N	O	S	0	0	0
			933	577	192	162	2			

- Molecule 44 is a protein called 30S RIBOSOMAL PROTEIN S14.

Mol	Chain	Residues	Atoms					ZeroOcc	AltConf	Trace
44	BQ	58	Total	C	N	O	S	0	0	0
			476	303	99	70	4			
44	CQ	58	Total	C	N	O	S	0	0	0
			476	303	99	70	4			

- Molecule 45 is a protein called 30S RIBOSOMAL PROTEIN S15.

Mol	Chain	Residues	Atoms					ZeroOcc	AltConf	Trace
45	BR	88	Total	C	N	O	S	0	0	0
			734	459	147	126	2			
45	CR	88	Total	C	N	O	S	0	0	0
			734	459	147	126	2			

- Molecule 46 is a protein called 30S RIBOSOMAL PROTEIN S16.

Mol	Chain	Residues	Atoms					ZeroOcc	AltConf	Trace
46	BS	84	Total	C	N	O	S	0	0	0
			705	446	140	118	1			
46	CS	84	Total	C	N	O	S	0	0	0
			705	446	140	118	1			

- Molecule 47 is a protein called 30S RIBOSOMAL PROTEIN S17.

Mol	Chain	Residues	Atoms					ZeroOcc	AltConf	Trace
47	BT	100	Total	C	N	O	S	0	0	0
			834	534	155	143	2			
47	CT	100	Total	C	N	O	S	0	0	0
			834	534	155	143	2			

- Molecule 48 is a protein called 30S RIBOSOMAL PROTEIN S18.

Mol	Chain	Residues	Atoms				ZeroOcc	AltConf	Trace
48	BU	72	Total	C	N	O	0	0	0
			591	376	117	98			
48	CU	72	Total	C	N	O	0	0	0
			591	376	117	98			

- Molecule 49 is a protein called 30S RIBOSOMAL PROTEIN S19.

Mol	Chain	Residues	Atoms					ZeroOcc	AltConf	Trace
49	BV	78	Total	C	N	O	S	0	0	0
			624	398	115	109	2			
49	CV	78	Total	C	N	O	S	0	0	0
			624	398	115	109	2			

- Molecule 50 is a protein called 30S RIBOSOMAL PROTEIN S20.

Mol	Chain	Residues	Atoms					ZeroOcc	AltConf	Trace
50	BW	99	Total	C	N	O	S	0	0	0
			763	470	162	129	2			
50	CW	99	Total	C	N	O	S	0	0	0
			763	470	162	129	2			

- Molecule 51 is a protein called 30S RIBOSOMAL PROTEIN THX.

Mol	Chain	Residues	Atoms				ZeroOcc	AltConf	Trace
51	BX	25	Total	C	N	O	0	0	0
			217	134	52	31			
51	CX	25	Total	C	N	O	0	0	0
			217	134	52	31			

- Molecule 52 is a RNA chain called TRNA-TYR.

Mol	Chain	Residues	Atoms						ZeroOcc	AltConf	Trace
52	BB	85	Total	C	N	O	P	S	0	0	0
			1814	813	323	592	85	1			
52	BD	85	Total	C	N	O	P	S	0	0	0
			1814	813	323	592	85	1			
52	CB	85	Total	C	N	O	P	S	0	0	0
			1814	813	323	592	85	1			
52	CD	85	Total	C	N	O	P	S	0	0	0
			1814	813	323	592	85	1			

- Molecule 53 is a RNA chain called TRNA-FMET.

Mol	Chain	Residues	Atoms					ZeroOcc	AltConf	Trace
53	BC	77	Total	C	N	O	P	0	0	0
			1643	732	298	536	77			
53	CC	77	Total	C	N	O	P	0	0	0
			1643	732	298	536	77			

- Molecule 54 is a RNA chain called MRNA.

Mol	Chain	Residues	Atoms					ZeroOcc	AltConf	Trace
54	B1	16	Total	C	N	O	P	0	0	0
			347	156	69	106	16			
54	C1	16	Total	C	N	O	P	0	0	0
			347	156	69	106	16			

- Molecule 55 is MAGNESIUM ION (three-letter code: MG) (formula: Mg).

Mol	Chain	Residues	Atoms		ZeroOcc	AltConf
55	BA	114	Total	Mg	0	0
			114	114		
55	CA	121	Total	Mg	0	0
			121	121		
55	AB	6	Total	Mg	0	0
			6	6		

*Continued on next page...*

*Continued from previous page...*

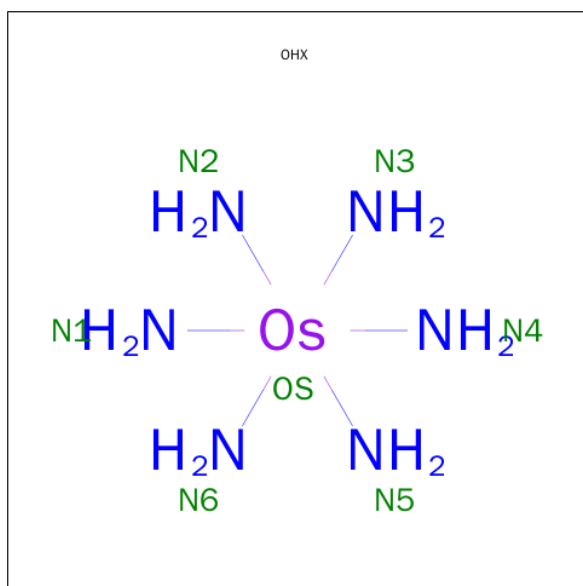
Mol	Chain	Residues	Atoms		ZeroOcc	AltConf
55	B1	1	Total 1	Mg 1	0	0
55	C1	2	Total 2	Mg 2	0	0
55	BB	13	Total 13	Mg 13	0	0
55	AE	3	Total 3	Mg 3	0	0
55	BF	1	Total 1	Mg 1	0	0
55	AA	332	Total 332	Mg 332	0	0
55	A5	1	Total 1	Mg 1	0	0
55	D7	1	Total 1	Mg 1	0	0
55	BC	4	Total 4	Mg 4	0	0
55	A1	2	Total 2	Mg 2	0	0
55	CN	1	Total 1	Mg 1	0	0
55	D0	1	Total 1	Mg 1	0	0
55	CC	7	Total 7	Mg 7	0	0
55	DA	272	Total 272	Mg 272	0	0
55	A0	1	Total 1	Mg 1	0	0
55	DE	1	Total 1	Mg 1	0	0
55	CB	3	Total 3	Mg 3	0	0
55	BS	1	Total 1	Mg 1	0	0
55	A7	1	Total 1	Mg 1	0	0
55	D5	1	Total 1	Mg 1	0	0
55	BD	1	Total 1	Mg 1	0	0

*Continued on next page...*

Continued from previous page...

Mol	Chain	Residues	Atoms		ZeroOcc	AltConf
55	AO	1	Total	Mg	0	0
			1	1		
55	BW	1	Total	Mg	0	0
			1	1		
55	A3	1	Total	Mg	0	0
			1	1		
55	AF	2	Total	Mg	0	0
			2	2		
55	DB	7	Total	Mg	0	0
			7	7		

- Molecule 56 is osmium (III) hexammine (three-letter code: OHX) (formula:  $\text{H}_{12}\text{N}_6\text{Os}$ ).



Mol	Chain	Residues	Atoms			ZeroOcc	AltConf
56	AA	1	Total	N	Os	0	0
			7	6	1		
56	AA	1	Total	N	Os	0	0
			7	6	1		
56	AA	1	Total	N	Os	0	0
			7	6	1		
56	AA	1	Total	N	Os	0	0
			7	6	1		
56	AA	1	Total	N	Os	0	0
			7	6	1		
56	AA	1	Total	N	Os	0	0
			7	6	1		

Continued on next page...

*Continued from previous page...*

Mol	Chain	Residues	Atoms			ZeroOcc	AltConf
56	AA	1	Total	N	Os	0	0
			7	6	1		
56	AA	1	Total	N	Os	0	0
			7	6	1		
56	AA	1	Total	N	Os	0	0
			7	6	1		
56	AA	1	Total	N	Os	0	0
			7	6	1		
56	AA	1	Total	N	Os	0	0
			7	6	1		
56	AA	1	Total	N	Os	0	0
			7	6	1		
56	AA	1	Total	N	Os	0	0
			7	6	1		
56	AA	1	Total	N	Os	0	0
			7	6	1		
56	AA	1	Total	N	Os	0	0
			7	6	1		
56	AA	1	Total	N	Os	0	0
			7	6	1		
56	AA	1	Total	N	Os	0	0
			7	6	1		
56	AA	1	Total	N	Os	0	0
			7	6	1		
56	AA	1	Total	N	Os	0	0
			7	6	1		
56	AA	1	Total	N	Os	0	0
			7	6	1		
56	AA	1	Total	N	Os	0	0
			7	6	1		
56	AA	1	Total	N	Os	0	0
			7	6	1		
56	AA	1	Total	N	Os	0	0
			7	6	1		
56	AA	1	Total	N	Os	0	0
			7	6	1		

*Continued on next page...*



*Continued from previous page...*

Mol	Chain	Residues	Atoms			ZeroOcc	AltConf
56	AA	1	Total	N	Os	0	0
			7	6	1		
56	AA	1	Total	N	Os	0	0
			7	6	1		
56	AA	1	Total	N	Os	0	0
			7	6	1		
56	AA	1	Total	N	Os	0	0
			7	6	1		
56	AA	1	Total	N	Os	0	0
			7	6	1		
56	AA	1	Total	N	Os	0	0
			7	6	1		
56	AA	1	Total	N	Os	0	0
			7	6	1		
56	AA	1	Total	N	Os	0	0
			7	6	1		
56	AA	1	Total	N	Os	0	0
			7	6	1		
56	AA	1	Total	N	Os	0	0
			7	6	1		
56	AA	1	Total	N	Os	0	0
			7	6	1		
56	AA	1	Total	N	Os	0	0
			7	6	1		
56	AA	1	Total	N	Os	0	0
			7	6	1		
56	AA	1	Total	N	Os	0	0
			7	6	1		
56	AA	1	Total	N	Os	0	0
			7	6	1		
56	AA	1	Total	N	Os	0	0
			7	6	1		
56	AA	1	Total	N	Os	0	0
			7	6	1		
56	AA	1	Total	N	Os	0	0
			7	6	1		

*Continued on next page...*

*Continued from previous page...*

Mol	Chain	Residues	Atoms			ZeroOcc	AltConf
56	AA	1	Total	N	Os	0	0
			7	6	1		
56	AA	1	Total	N	Os	0	0
			7	6	1		
56	AA	1	Total	N	Os	0	0
			7	6	1		
56	AA	1	Total	N	Os	0	0
			7	6	1		
56	AA	1	Total	N	Os	0	0
			7	6	1		
56	AA	1	Total	N	Os	0	0
			7	6	1		
56	AA	1	Total	N	Os	0	0
			7	6	1		
56	AA	1	Total	N	Os	0	0
			7	6	1		
56	AA	1	Total	N	Os	0	0
			7	6	1		
56	AA	1	Total	N	Os	0	0
			7	6	1		
56	AA	1	Total	N	Os	0	0
			7	6	1		
56	AA	1	Total	N	Os	0	0
			7	6	1		
56	AA	1	Total	N	Os	0	0
			7	6	1		
56	AA	1	Total	N	Os	0	0
			7	6	1		
56	AA	1	Total	N	Os	0	0
			7	6	1		
56	AA	1	Total	N	Os	0	0
			7	6	1		
56	AA	1	Total	N	Os	0	0
			7	6	1		
56	AA	1	Total	N	Os	0	0
			7	6	1		

*Continued on next page...*

*Continued from previous page...*

Mol	Chain	Residues	Atoms			ZeroOcc	AltConf
56	AA	1	Total	N	Os	0	0
			7	6	1		
56	AA	1	Total	N	Os	0	0
			7	6	1		
56	AA	1	Total	N	Os	0	0
			7	6	1		
56	AA	1	Total	N	Os	0	0
			7	6	1		
56	AA	1	Total	N	Os	0	0
			7	6	1		
56	AA	1	Total	N	Os	0	0
			7	6	1		
56	AA	1	Total	N	Os	0	0
			7	6	1		
56	AA	1	Total	N	Os	0	0
			7	6	1		
56	AA	1	Total	N	Os	0	0
			7	6	1		
56	AA	1	Total	N	Os	0	0
			7	6	1		
56	AA	1	Total	N	Os	0	0
			7	6	1		
56	AA	1	Total	N	Os	0	0
			7	6	1		
56	AA	1	Total	N	Os	0	0
			7	6	1		
56	AA	1	Total	N	Os	0	0
			7	6	1		
56	AA	1	Total	N	Os	0	0
			7	6	1		
56	AA	1	Total	N	Os	0	0
			7	6	1		
56	AA	1	Total	N	Os	0	0
			7	6	1		
56	AA	1	Total	N	Os	0	0
			7	6	1		

*Continued on next page...*

*Continued from previous page...*

Mol	Chain	Residues	Atoms			ZeroOcc	AltConf
56	AA	1	Total	N	Os	0	0
			7	6	1		
56	AA	1	Total	N	Os	0	0
			7	6	1		
56	AA	1	Total	N	Os	0	0
			7	6	1		
56	AA	1	Total	N	Os	0	0
			7	6	1		
56	AA	1	Total	N	Os	0	0
			7	6	1		
56	AA	1	Total	N	Os	0	0
			7	6	1		
56	AA	1	Total	N	Os	0	0
			7	6	1		
56	AA	1	Total	N	Os	0	0
			7	6	1		
56	AA	1	Total	N	Os	0	0
			7	6	1		
56	AA	1	Total	N	Os	0	0
			7	6	1		
56	AA	1	Total	N	Os	0	0
			7	6	1		
56	AA	1	Total	N	Os	0	0
			7	6	1		
56	AA	1	Total	N	Os	0	0
			7	6	1		
56	AA	1	Total	N	Os	0	0
			7	6	1		
56	AA	1	Total	N	Os	0	0
			7	6	1		
56	AA	1	Total	N	Os	0	0
			7	6	1		
56	AA	1	Total	N	Os	0	0
			7	6	1		
56	AA	1	Total	N	Os	0	0
			7	6	1		

*Continued on next page...*

*Continued from previous page...*

Mol	Chain	Residues	Atoms			ZeroOcc	AltConf
56	AA	1	Total	N	Os	0	0
			7	6	1		
56	AA	1	Total	N	Os	0	0
			7	6	1		
56	AA	1	Total	N	Os	0	0
			7	6	1		
56	AA	1	Total	N	Os	0	0
			7	6	1		
56	AA	1	Total	N	Os	0	0
			7	6	1		
56	AA	1	Total	N	Os	0	0
			7	6	1		
56	AA	1	Total	N	Os	0	0
			7	6	1		
56	AA	1	Total	N	Os	0	0
			7	6	1		
56	AA	1	Total	N	Os	0	0
			7	6	1		
56	AA	1	Total	N	Os	0	0
			7	6	1		
56	AA	1	Total	N	Os	0	0
			7	6	1		
56	AA	1	Total	N	Os	0	0
			7	6	1		
56	AA	1	Total	N	Os	0	0
			7	6	1		
56	AA	1	Total	N	Os	0	0
			7	6	1		
56	AA	1	Total	N	Os	0	0
			7	6	1		
56	AA	1	Total	N	Os	0	0
			7	6	1		
56	AA	1	Total	N	Os	0	0
			7	6	1		
56	AA	1	Total	N	Os	0	0
			7	6	1		

*Continued on next page...*

*Continued from previous page...*

Mol	Chain	Residues	Atoms			ZeroOcc	AltConf
56	AA	1	Total	N	Os	0	0
			7	6	1		
56	AA	1	Total	N	Os	0	0
			7	6	1		
56	AA	1	Total	N	Os	0	0
			7	6	1		
56	AA	1	Total	N	Os	0	0
			7	6	1		
56	AA	1	Total	N	Os	0	0
			7	6	1		
56	AA	1	Total	N	Os	0	0
			7	6	1		
56	AA	1	Total	N	Os	0	0
			7	6	1		
56	AA	1	Total	N	Os	0	0
			7	6	1		
56	AA	1	Total	N	Os	0	0
			7	6	1		
56	AA	1	Total	N	Os	0	0
			7	6	1		
56	AA	1	Total	N	Os	0	0
			7	6	1		
56	AA	1	Total	N	Os	0	0
			7	6	1		
56	AA	1	Total	N	Os	0	0
			7	6	1		
56	AA	1	Total	N	Os	0	0
			7	6	1		
56	AA	1	Total	N	Os	0	0
			7	6	1		
56	AA	1	Total	N	Os	0	0
			7	6	1		
56	AA	1	Total	N	Os	0	0
			7	6	1		
56	AA	1	Total	N	Os	0	0
			7	6	1		
56	AA	1	Total	N	Os	0	0
			7	6	1		

*Continued on next page...*

*Continued from previous page...*

Mol	Chain	Residues	Atoms			ZeroOcc	AltConf
56	AA	1	Total	N	Os	0	0
			7	6	1		
56	AA	1	Total	N	Os	0	0
			7	6	1		
56	AA	1	Total	N	Os	0	0
			7	6	1		
56	AA	1	Total	N	Os	0	0
			7	6	1		
56	AA	1	Total	N	Os	0	0
			7	6	1		
56	AA	1	Total	N	Os	0	0
			7	6	1		
56	AA	1	Total	N	Os	0	0
			7	6	1		
56	AA	1	Total	N	Os	0	0
			7	6	1		
56	AA	1	Total	N	Os	0	0
			7	6	1		
56	AA	1	Total	N	Os	0	0
			7	6	1		
56	AA	1	Total	N	Os	0	0
			7	6	1		
56	AA	1	Total	N	Os	0	0
			7	6	1		
56	AA	1	Total	N	Os	0	0
			7	6	1		
56	AA	1	Total	N	Os	0	0
			7	6	1		
56	AA	1	Total	N	Os	0	0
			7	6	1		
56	AA	1	Total	N	Os	0	0
			7	6	1		
56	AA	1	Total	N	Os	0	0
			7	6	1		
56	AA	1	Total	N	Os	0	0
			7	6	1		

*Continued on next page...*

*Continued from previous page...*

Mol	Chain	Residues	Atoms			ZeroOcc	AltConf
56	AA	1	Total	N	Os	0	0
			7	6	1		
56	AA	1	Total	N	Os	0	0
			7	6	1		
56	AA	1	Total	N	Os	0	0
			7	6	1		
56	AA	1	Total	N	Os	0	0
			7	6	1		
56	AA	1	Total	N	Os	0	0
			7	6	1		
56	AA	1	Total	N	Os	0	0
			7	6	1		
56	AA	1	Total	N	Os	0	0
			7	6	1		
56	AA	1	Total	N	Os	0	0
			7	6	1		
56	AA	1	Total	N	Os	0	0
			7	6	1		
56	AA	1	Total	N	Os	0	0
			7	6	1		
56	AA	1	Total	N	Os	0	0
			7	6	1		
56	AA	1	Total	N	Os	0	0
			7	6	1		
56	AA	1	Total	N	Os	0	0
			7	6	1		
56	AA	1	Total	N	Os	0	0
			7	6	1		
56	AA	1	Total	N	Os	0	0
			7	6	1		
56	AA	1	Total	N	Os	0	0
			7	6	1		
56	AA	1	Total	N	Os	0	0
			7	6	1		
56	AA	1	Total	N	Os	0	0
			7	6	1		
56	AA	1	Total	N	Os	0	0
			7	6	1		
56	AA	1	Total	N	Os	0	0
			7	6	1		

*Continued on next page...*



*Continued from previous page...*

Mol	Chain	Residues	Atoms			ZeroOcc	AltConf
56	AA	1	Total	N	Os	0	0
			7	6	1		
56	AA	1	Total	N	Os	0	0
			7	6	1		
56	AA	1	Total	N	Os	0	0
			7	6	1		
56	AA	1	Total	N	Os	0	0
			7	6	1		
56	AA	1	Total	N	Os	0	0
			7	6	1		
56	AA	1	Total	N	Os	0	0
			7	6	1		
56	AA	1	Total	N	Os	0	0
			7	6	1		
56	AA	1	Total	N	Os	0	0
			7	6	1		
56	AA	1	Total	N	Os	0	0
			7	6	1		
56	AA	1	Total	N	Os	0	0
			7	6	1		
56	AA	1	Total	N	Os	0	0
			7	6	1		
56	AA	1	Total	N	Os	0	0
			7	6	1		
56	AA	1	Total	N	Os	0	0
			7	6	1		
56	AA	1	Total	N	Os	0	0
			7	6	1		
56	AA	1	Total	N	Os	0	0
			7	6	1		
56	AA	1	Total	N	Os	0	0
			7	6	1		
56	AA	1	Total	N	Os	0	0
			7	6	1		
56	AA	1	Total	N	Os	0	0
			7	6	1		

*Continued on next page...*

*Continued from previous page...*

Mol	Chain	Residues	Atoms			ZeroOcc	AltConf
56	AA	1	Total	N	Os	0	0
			7	6	1		
56	AA	1	Total	N	Os	0	0
			7	6	1		
56	AA	1	Total	N	Os	0	0
			7	6	1		
56	AA	1	Total	N	Os	0	0
			7	6	1		
56	AA	1	Total	N	Os	0	0
			7	6	1		
56	AA	1	Total	N	Os	0	0
			7	6	1		
56	AA	1	Total	N	Os	0	0
			7	6	1		
56	AA	1	Total	N	Os	0	0
			7	6	1		
56	AA	1	Total	N	Os	0	0
			7	6	1		
56	AA	1	Total	N	Os	0	0
			7	6	1		
56	AA	1	Total	N	Os	0	0
			7	6	1		
56	AA	1	Total	N	Os	0	0
			7	6	1		
56	AA	1	Total	N	Os	0	0
			7	6	1		
56	AA	1	Total	N	Os	0	0
			7	6	1		
56	AA	1	Total	N	Os	0	0
			7	6	1		
56	AA	1	Total	N	Os	0	0
			7	6	1		
56	AA	1	Total	N	Os	0	0
			7	6	1		
56	AA	1	Total	N	Os	0	0
			7	6	1		

*Continued on next page...*

*Continued from previous page...*

Mol	Chain	Residues	Atoms			ZeroOcc	AltConf
56	AB	1	Total	N	Os	0	0
			7	6	1		
56	AB	1	Total	N	Os	0	0
			7	6	1		
56	AB	1	Total	N	Os	0	0
			7	6	1		
56	AB	1	Total	N	Os	0	0
			7	6	1		
56	AB	1	Total	N	Os	0	0
			7	6	1		
56	AB	1	Total	N	Os	0	0
			7	6	1		
56	AB	1	Total	N	Os	0	0
			7	6	1		
56	AB	1	Total	N	Os	0	0
			7	6	1		
56	AB	1	Total	N	Os	0	0
			7	6	1		
56	AB	1	Total	N	Os	0	0
			7	6	1		
56	AE	1	Total	N	Os	0	0
			7	6	1		
56	AF	1	Total	N	Os	0	0
			7	6	1		
56	AO	1	Total	N	Os	0	0
			7	6	1		
56	AO	1	Total	N	Os	0	0
			7	6	1		
56	A1	1	Total	N	Os	0	0
			7	6	1		
56	A1	1	Total	N	Os	0	0
			7	6	1		
56	A3	1	Total	N	Os	0	0
			7	6	1		
56	AW	1	Total	N	Os	0	0
			7	6	1		

*Continued on next page...*

*Continued from previous page...*

Mol	Chain	Residues	Atoms			ZeroOcc	AltConf
56	A6	1	Total	N	Os	0	0
			7	6	1		
56	BA	1	Total	N	Os	0	0
			7	6	1		
56	BA	1	Total	N	Os	0	0
			7	6	1		
56	BA	1	Total	N	Os	0	0
			7	6	1		
56	BA	1	Total	N	Os	0	0
			7	6	1		
56	BA	1	Total	N	Os	0	0
			7	6	1		
56	BA	1	Total	N	Os	0	0
			7	6	1		
56	BA	1	Total	N	Os	0	0
			7	6	1		
56	BA	1	Total	N	Os	0	0
			7	6	1		
56	BA	1	Total	N	Os	0	0
			7	6	1		
56	BA	1	Total	N	Os	0	0
			7	6	1		
56	BA	1	Total	N	Os	0	0
			7	6	1		
56	BA	1	Total	N	Os	0	0
			7	6	1		
56	BA	1	Total	N	Os	0	0
			7	6	1		
56	BA	1	Total	N	Os	0	0
			7	6	1		
56	BA	1	Total	N	Os	0	0
			7	6	1		
56	BA	1	Total	N	Os	0	0
			7	6	1		
56	BA	1	Total	N	Os	0	0
			7	6	1		

*Continued on next page...*

*Continued from previous page...*

Mol	Chain	Residues	Atoms			ZeroOcc	AltConf
56	BA	1	Total	N	Os	0	0
			7	6	1		
56	BA	1	Total	N	Os	0	0
			7	6	1		
56	BA	1	Total	N	Os	0	0
			7	6	1		
56	BA	1	Total	N	Os	0	0
			7	6	1		
56	BA	1	Total	N	Os	0	0
			7	6	1		
56	BA	1	Total	N	Os	0	0
			7	6	1		
56	BA	1	Total	N	Os	0	0
			7	6	1		
56	BA	1	Total	N	Os	0	0
			7	6	1		
56	BA	1	Total	N	Os	0	0
			7	6	1		
56	BA	1	Total	N	Os	0	0
			7	6	1		
56	BA	1	Total	N	Os	0	0
			7	6	1		
56	BA	1	Total	N	Os	0	0
			7	6	1		
56	BA	1	Total	N	Os	0	0
			7	6	1		
56	BA	1	Total	N	Os	0	0
			7	6	1		
56	BA	1	Total	N	Os	0	0
			7	6	1		
56	BA	1	Total	N	Os	0	0
			7	6	1		
56	BA	1	Total	N	Os	0	0
			7	6	1		
56	BA	1	Total	N	Os	0	0
			7	6	1		
56	BA	1	Total	N	Os	0	0
			7	6	1		

*Continued on next page...*

*Continued from previous page...*

Mol	Chain	Residues	Atoms			ZeroOcc	AltConf
56	BA	1	Total	N	Os	0	0
			7	6	1		
56	BA	1	Total	N	Os	0	0
			7	6	1		
56	BA	1	Total	N	Os	0	0
			7	6	1		
56	BA	1	Total	N	Os	0	0
			7	6	1		
56	BA	1	Total	N	Os	0	0
			7	6	1		
56	BA	1	Total	N	Os	0	0
			7	6	1		
56	BA	1	Total	N	Os	0	0
			7	6	1		
56	BA	1	Total	N	Os	0	0
			7	6	1		
56	BA	1	Total	N	Os	0	0
			7	6	1		
56	BA	1	Total	N	Os	0	0
			7	6	1		
56	BA	1	Total	N	Os	0	0
			7	6	1		
56	BA	1	Total	N	Os	0	0
			7	6	1		
56	BA	1	Total	N	Os	0	0
			7	6	1		
56	BA	1	Total	N	Os	0	0
			7	6	1		
56	BA	1	Total	N	Os	0	0
			7	6	1		
56	BA	1	Total	N	Os	0	0
			7	6	1		
56	BA	1	Total	N	Os	0	0
			7	6	1		
56	BA	1	Total	N	Os	0	0
			7	6	1		

*Continued on next page...*

*Continued from previous page...*

Mol	Chain	Residues	Atoms			ZeroOcc	AltConf
56	BA	1	Total	N	Os	0	0
			7	6	1		
56	BA	1	Total	N	Os	0	0
			7	6	1		
56	BA	1	Total	N	Os	0	0
			7	6	1		
56	BA	1	Total	N	Os	0	0
			7	6	1		
56	BA	1	Total	N	Os	0	0
			7	6	1		
56	BA	1	Total	N	Os	0	0
			7	6	1		
56	BA	1	Total	N	Os	0	0
			7	6	1		
56	BA	1	Total	N	Os	0	0
			7	6	1		
56	BA	1	Total	N	Os	0	0
			7	6	1		
56	BA	1	Total	N	Os	0	0
			7	6	1		
56	BA	1	Total	N	Os	0	0
			7	6	1		
56	BA	1	Total	N	Os	0	0
			7	6	1		
56	BA	1	Total	N	Os	0	0
			7	6	1		
56	BA	1	Total	N	Os	0	0
			7	6	1		
56	BA	1	Total	N	Os	0	0
			7	6	1		
56	BA	1	Total	N	Os	0	0
			7	6	1		
56	BA	1	Total	N	Os	0	0
			7	6	1		
56	BA	1	Total	N	Os	0	0
			7	6	1		

*Continued on next page...*

*Continued from previous page...*

Mol	Chain	Residues	Atoms			ZeroOcc	AltConf
56	BA	1	Total	N	Os	0	0
			7	6	1		
56	BA	1	Total	N	Os	0	0
			7	6	1		
56	BA	1	Total	N	Os	0	0
			7	6	1		
56	BA	1	Total	N	Os	0	0
			7	6	1		
56	BA	1	Total	N	Os	0	0
			7	6	1		
56	BA	1	Total	N	Os	0	0
			7	6	1		
56	BA	1	Total	N	Os	0	0
			7	6	1		
56	BA	1	Total	N	Os	0	0
			7	6	1		
56	BA	1	Total	N	Os	0	0
			7	6	1		
56	BA	1	Total	N	Os	0	0
			7	6	1		
56	BA	1	Total	N	Os	0	0
			7	6	1		
56	BA	1	Total	N	Os	0	0
			7	6	1		
56	BA	1	Total	N	Os	0	0
			7	6	1		
56	BG	1	Total	N	Os	0	0
			7	6	1		
56	BL	1	Total	N	Os	0	0
			7	6	1		
56	BR	1	Total	N	Os	0	0
			7	6	1		
56	BB	1	Total	N	Os	0	0
			7	6	1		
56	BB	1	Total	N	Os	0	0
			7	6	1		

*Continued on next page...*



*Continued from previous page...*

Mol	Chain	Residues	Atoms			ZeroOcc	AltConf
56	BC	1	Total	N	Os	0	0
			7	6	1		
56	BC	1	Total	N	Os	0	0
			7	6	1		
56	BC	1	Total	N	Os	0	0
			7	6	1		
56	BD	1	Total	N	Os	0	0
			7	6	1		
56	BD	1	Total	N	Os	0	0
			7	6	1		
56	BD	1	Total	N	Os	1	0
			7	6	1		
56	CA	1	Total	N	Os	0	0
			7	6	1		
56	CA	1	Total	N	Os	0	0
			7	6	1		
56	CA	1	Total	N	Os	0	0
			7	6	1		
56	CA	1	Total	N	Os	0	0
			7	6	1		
56	CA	1	Total	N	Os	0	0
			7	6	1		
56	CA	1	Total	N	Os	0	0
			7	6	1		
56	CA	1	Total	N	Os	0	0
			7	6	1		
56	CA	1	Total	N	Os	0	0
			7	6	1		
56	CA	1	Total	N	Os	0	0
			7	6	1		
56	CA	1	Total	N	Os	0	0
			7	6	1		
56	CA	1	Total	N	Os	0	0
			7	6	1		
56	CA	1	Total	N	Os	0	0
			7	6	1		
56	CA	1	Total	N	Os	0	0
			7	6	1		
56	CA	1	Total	N	Os	0	0
			7	6	1		

*Continued on next page...*

*Continued from previous page...*

Mol	Chain	Residues	Atoms			ZeroOcc	AltConf
56	CA	1	Total	N	Os	0	0
			7	6	1		
56	CA	1	Total	N	Os	0	0
			7	6	1		
56	CA	1	Total	N	Os	0	0
			7	6	1		
56	CA	1	Total	N	Os	0	0
			7	6	1		
56	CA	1	Total	N	Os	0	0
			7	6	1		
56	CA	1	Total	N	Os	0	0
			7	6	1		
56	CA	1	Total	N	Os	0	0
			7	6	1		
56	CA	1	Total	N	Os	0	0
			7	6	1		
56	CA	1	Total	N	Os	0	0
			7	6	1		
56	CA	1	Total	N	Os	0	0
			7	6	1		
56	CA	1	Total	N	Os	0	0
			7	6	1		
56	CA	1	Total	N	Os	0	0
			7	6	1		
56	CA	1	Total	N	Os	0	0
			7	6	1		
56	CA	1	Total	N	Os	0	0
			7	6	1		
56	CA	1	Total	N	Os	0	0
			7	6	1		
56	CA	1	Total	N	Os	0	0
			7	6	1		
56	CA	1	Total	N	Os	0	0
			7	6	1		
56	CA	1	Total	N	Os	0	0
			7	6	1		
56	CA	1	Total	N	Os	0	0
			7	6	1		
56	CA	1	Total	N	Os	0	0
			7	6	1		

*Continued on next page...*

*Continued from previous page...*

Mol	Chain	Residues	Atoms			ZeroOcc	AltConf
56	CA	1	Total	N	Os	0	0
			7	6	1		
56	CA	1	Total	N	Os	0	0
			7	6	1		
56	CA	1	Total	N	Os	0	0
			7	6	1		
56	CA	1	Total	N	Os	0	0
			7	6	1		
56	CA	1	Total	N	Os	0	0
			7	6	1		
56	CA	1	Total	N	Os	0	0
			7	6	1		
56	CA	1	Total	N	Os	0	0
			7	6	1		
56	CA	1	Total	N	Os	0	0
			7	6	1		
56	CA	1	Total	N	Os	0	0
			7	6	1		
56	CA	1	Total	N	Os	0	0
			7	6	1		
56	CA	1	Total	N	Os	0	0
			7	6	1		
56	CA	1	Total	N	Os	0	0
			7	6	1		
56	CA	1	Total	N	Os	0	0
			7	6	1		
56	CA	1	Total	N	Os	0	0
			7	6	1		
56	CA	1	Total	N	Os	0	0
			7	6	1		
56	CA	1	Total	N	Os	0	0
			7	6	1		
56	CA	1	Total	N	Os	0	0
			7	6	1		
56	CA	1	Total	N	Os	0	0
			7	6	1		
56	CA	1	Total	N	Os	0	0
			7	6	1		

*Continued on next page...*

*Continued from previous page...*

Mol	Chain	Residues	Atoms			ZeroOcc	AltConf
56	CA	1	Total	N	Os	0	0
			7	6	1		
56	CA	1	Total	N	Os	0	0
			7	6	1		
56	CA	1	Total	N	Os	0	0
			7	6	1		
56	CA	1	Total	N	Os	0	0
			7	6	1		
56	CA	1	Total	N	Os	0	0
			7	6	1		
56	CA	1	Total	N	Os	0	0
			7	6	1		
56	CA	1	Total	N	Os	0	0
			7	6	1		
56	CA	1	Total	N	Os	0	0
			7	6	1		
56	CA	1	Total	N	Os	0	0
			7	6	1		
56	CA	1	Total	N	Os	0	0
			7	6	1		
56	CA	1	Total	N	Os	0	0
			7	6	1		
56	CA	1	Total	N	Os	0	0
			7	6	1		
56	CA	1	Total	N	Os	0	0
			7	6	1		
56	CA	1	Total	N	Os	0	0
			7	6	1		
56	CA	1	Total	N	Os	0	0
			7	6	1		
56	CA	1	Total	N	Os	0	0
			7	6	1		
56	CA	1	Total	N	Os	0	0
			7	6	1		
56	CA	1	Total	N	Os	0	0
			7	6	1		

*Continued on next page...*

*Continued from previous page...*

Mol	Chain	Residues	Atoms			ZeroOcc	AltConf
56	CA	1	Total	N	Os	0	0
			7	6	1		
56	CA	1	Total	N	Os	0	0
			7	6	1		
56	CA	1	Total	N	Os	0	0
			7	6	1		
56	CA	1	Total	N	Os	0	0
			7	6	1		
56	CA	1	Total	N	Os	0	0
			7	6	1		
56	CA	1	Total	N	Os	0	0
			7	6	1		
56	CA	1	Total	N	Os	0	0
			7	6	1		
56	CA	1	Total	N	Os	0	0
			7	6	1		
56	CA	1	Total	N	Os	0	0
			7	6	1		
56	CA	1	Total	N	Os	0	0
			7	6	1		
56	CA	1	Total	N	Os	0	0
			7	6	1		
56	CA	1	Total	N	Os	0	0
			7	6	1		
56	CK	1	Total	N	Os	0	0
			7	6	1		
56	CR	1	Total	N	Os	0	0
			7	6	1		
56	CV	1	Total	N	Os	0	0
			7	6	1		
56	CB	1	Total	N	Os	0	0
			7	6	1		
56	CB	1	Total	N	Os	0	0
			7	6	1		
56	CB	1	Total	N	Os	0	0
			7	6	1		

*Continued on next page...*

*Continued from previous page...*

Mol	Chain	Residues	Atoms			ZeroOcc	AltConf
56	CC	1	Total	N	Os	0	0
			7	6	1		
56	CC	1	Total	N	Os	0	0
			7	6	1		
56	CC	1	Total	N	Os	0	0
			7	6	1		
56	CD	1	Total	N	Os	0	0
			7	6	1		
56	DA	1	Total	N	Os	0	0
			7	6	1		
56	DA	1	Total	N	Os	0	0
			7	6	1		
56	DA	1	Total	N	Os	0	0
			7	6	1		
56	DA	1	Total	N	Os	0	0
			7	6	1		
56	DA	1	Total	N	Os	0	0
			7	6	1		
56	DA	1	Total	N	Os	0	0
			7	6	1		
56	DA	1	Total	N	Os	0	0
			7	6	1		
56	DA	1	Total	N	Os	0	0
			7	6	1		
56	DA	1	Total	N	Os	0	0
			7	6	1		
56	DA	1	Total	N	Os	0	0
			7	6	1		
56	DA	1	Total	N	Os	0	0
			7	6	1		
56	DA	1	Total	N	Os	0	0
			7	6	1		
56	DA	1	Total	N	Os	0	0
			7	6	1		
56	DA	1	Total	N	Os	0	0
			7	6	1		

*Continued on next page...*

*Continued from previous page...*

Mol	Chain	Residues	Atoms			ZeroOcc	AltConf
56	DA	1	Total	N	Os	0	0
			7	6	1		
56	DA	1	Total	N	Os	0	0
			7	6	1		
56	DA	1	Total	N	Os	0	0
			7	6	1		
56	DA	1	Total	N	Os	0	0
			7	6	1		
56	DA	1	Total	N	Os	0	0
			7	6	1		
56	DA	1	Total	N	Os	0	0
			7	6	1		
56	DA	1	Total	N	Os	0	0
			7	6	1		
56	DA	1	Total	N	Os	0	0
			7	6	1		
56	DA	1	Total	N	Os	0	0
			7	6	1		
56	DA	1	Total	N	Os	0	0
			7	6	1		
56	DA	1	Total	N	Os	0	0
			7	6	1		
56	DA	1	Total	N	Os	0	0
			7	6	1		
56	DA	1	Total	N	Os	0	0
			7	6	1		
56	DA	1	Total	N	Os	0	0
			7	6	1		
56	DA	1	Total	N	Os	0	0
			7	6	1		
56	DA	1	Total	N	Os	0	0
			7	6	1		
56	DA	1	Total	N	Os	0	0
			7	6	1		
56	DA	1	Total	N	Os	0	0
			7	6	1		

*Continued on next page...*

*Continued from previous page...*

Mol	Chain	Residues	Atoms			ZeroOcc	AltConf
56	DA	1	Total	N	Os	0	0
			7	6	1		
56	DA	1	Total	N	Os	0	0
			7	6	1		
56	DA	1	Total	N	Os	0	0
			7	6	1		
56	DA	1	Total	N	Os	0	0
			7	6	1		
56	DA	1	Total	N	Os	0	0
			7	6	1		
56	DA	1	Total	N	Os	0	0
			7	6	1		
56	DA	1	Total	N	Os	0	0
			7	6	1		
56	DA	1	Total	N	Os	0	0
			7	6	1		
56	DA	1	Total	N	Os	0	0
			7	6	1		
56	DA	1	Total	N	Os	0	0
			7	6	1		
56	DA	1	Total	N	Os	0	0
			7	6	1		
56	DA	1	Total	N	Os	0	0
			7	6	1		
56	DA	1	Total	N	Os	0	0
			7	6	1		
56	DA	1	Total	N	Os	0	0
			7	6	1		
56	DA	1	Total	N	Os	0	0
			7	6	1		
56	DA	1	Total	N	Os	0	0
			7	6	1		
56	DA	1	Total	N	Os	0	0
			7	6	1		
56	DA	1	Total	N	Os	0	0
			7	6	1		

*Continued on next page...*



*Continued from previous page...*

Mol	Chain	Residues	Atoms			ZeroOcc	AltConf
56	DA	1	Total	N	Os	0	0
			7	6	1		
56	DA	1	Total	N	Os	0	0
			7	6	1		
56	DA	1	Total	N	Os	0	0
			7	6	1		
56	DA	1	Total	N	Os	0	0
			7	6	1		
56	DA	1	Total	N	Os	0	0
			7	6	1		
56	DA	1	Total	N	Os	0	0
			7	6	1		
56	DA	1	Total	N	Os	0	0
			7	6	1		
56	DA	1	Total	N	Os	0	0
			7	6	1		
56	DA	1	Total	N	Os	0	0
			7	6	1		
56	DA	1	Total	N	Os	0	0
			7	6	1		
56	DA	1	Total	N	Os	0	0
			7	6	1		
56	DA	1	Total	N	Os	0	0
			7	6	1		
56	DA	1	Total	N	Os	0	0
			7	6	1		
56	DA	1	Total	N	Os	0	0
			7	6	1		
56	DA	1	Total	N	Os	0	0
			7	6	1		
56	DA	1	Total	N	Os	0	0
			7	6	1		
56	DA	1	Total	N	Os	0	0
			7	6	1		
56	DA	1	Total	N	Os	0	0
			7	6	1		

*Continued on next page...*

*Continued from previous page...*

Mol	Chain	Residues	Atoms			ZeroOcc	AltConf
56	DA	1	Total	N	Os	0	0
			7	6	1		
56	DA	1	Total	N	Os	0	0
			7	6	1		
56	DA	1	Total	N	Os	0	0
			7	6	1		
56	DA	1	Total	N	Os	0	0
			7	6	1		
56	DA	1	Total	N	Os	0	0
			7	6	1		
56	DA	1	Total	N	Os	0	0
			7	6	1		
56	DA	1	Total	N	Os	0	0
			7	6	1		
56	DA	1	Total	N	Os	0	0
			7	6	1		
56	DA	1	Total	N	Os	0	0
			7	6	1		
56	DA	1	Total	N	Os	0	0
			7	6	1		
56	DA	1	Total	N	Os	0	0
			7	6	1		
56	DA	1	Total	N	Os	0	0
			7	6	1		
56	DA	1	Total	N	Os	0	0
			7	6	1		
56	DA	1	Total	N	Os	0	0
			7	6	1		
56	DA	1	Total	N	Os	0	0
			7	6	1		
56	DA	1	Total	N	Os	0	0
			7	6	1		
56	DA	1	Total	N	Os	0	0
			7	6	1		
56	DA	1	Total	N	Os	0	0
			7	6	1		

*Continued on next page...*

*Continued from previous page...*

Mol	Chain	Residues	Atoms			ZeroOcc	AltConf
56	DA	1	Total	N	Os	0	0
			7	6	1		
56	DA	1	Total	N	Os	0	0
			7	6	1		
56	DA	1	Total	N	Os	0	0
			7	6	1		
56	DA	1	Total	N	Os	0	0
			7	6	1		
56	DA	1	Total	N	Os	0	0
			7	6	1		
56	DA	1	Total	N	Os	0	0
			7	6	1		
56	DA	1	Total	N	Os	0	0
			7	6	1		
56	DA	1	Total	N	Os	0	0
			7	6	1		
56	DA	1	Total	N	Os	0	0
			7	6	1		
56	DA	1	Total	N	Os	0	0
			7	6	1		
56	DA	1	Total	N	Os	0	0
			7	6	1		
56	DA	1	Total	N	Os	0	0
			7	6	1		
56	DA	1	Total	N	Os	0	0
			7	6	1		
56	DA	1	Total	N	Os	0	0
			7	6	1		
56	DA	1	Total	N	Os	0	0
			7	6	1		
56	DA	1	Total	N	Os	0	0
			7	6	1		
56	DA	1	Total	N	Os	0	0
			7	6	1		
56	DA	1	Total	N	Os	0	0
			7	6	1		
56	DA	1	Total	N	Os	0	0
			7	6	1		
56	DA	1	Total	N	Os	0	0
			7	6	1		

*Continued on next page...*

*Continued from previous page...*

Mol	Chain	Residues	Atoms			ZeroOcc	AltConf
56	DA	1	Total	N	Os	0	0
			7	6	1		
56	DA	1	Total	N	Os	0	0
			7	6	1		
56	DA	1	Total	N	Os	0	0
			7	6	1		
56	DA	1	Total	N	Os	0	0
			7	6	1		
56	DA	1	Total	N	Os	0	0
			7	6	1		
56	DA	1	Total	N	Os	0	0
			7	6	1		
56	DA	1	Total	N	Os	0	0
			7	6	1		
56	DA	1	Total	N	Os	0	0
			7	6	1		
56	DA	1	Total	N	Os	0	0
			7	6	1		
56	DA	1	Total	N	Os	0	0
			7	6	1		
56	DA	1	Total	N	Os	0	0
			7	6	1		
56	DA	1	Total	N	Os	0	0
			7	6	1		
56	DA	1	Total	N	Os	0	0
			7	6	1		
56	DA	1	Total	N	Os	0	0
			7	6	1		
56	DA	1	Total	N	Os	0	0
			7	6	1		
56	DA	1	Total	N	Os	0	0
			7	6	1		
56	DA	1	Total	N	Os	0	0
			7	6	1		
56	DA	1	Total	N	Os	0	0
			7	6	1		

*Continued on next page...*

*Continued from previous page...*

Mol	Chain	Residues	Atoms			ZeroOcc	AltConf
56	DA	1	Total	N	Os	0	0
			7	6	1		
56	DA	1	Total	N	Os	0	0
			7	6	1		
56	DA	1	Total	N	Os	0	0
			7	6	1		
56	DA	1	Total	N	Os	0	0
			7	6	1		
56	DA	1	Total	N	Os	0	0
			7	6	1		
56	DA	1	Total	N	Os	0	0
			7	6	1		
56	DA	1	Total	N	Os	0	0
			7	6	1		
56	DA	1	Total	N	Os	0	0
			7	6	1		
56	DA	1	Total	N	Os	0	0
			7	6	1		
56	DA	1	Total	N	Os	0	0
			7	6	1		
56	DA	1	Total	N	Os	0	0
			7	6	1		
56	DA	1	Total	N	Os	0	0
			7	6	1		
56	DA	1	Total	N	Os	0	0
			7	6	1		
56	DA	1	Total	N	Os	0	0
			7	6	1		
56	DA	1	Total	N	Os	0	0
			7	6	1		
56	DA	1	Total	N	Os	0	0
			7	6	1		
56	DA	1	Total	N	Os	0	0
			7	6	1		
56	DA	1	Total	N	Os	0	0
			7	6	1		

*Continued on next page...*

*Continued from previous page...*

Mol	Chain	Residues	Atoms			ZeroOcc	AltConf
56	DA	1	Total	N	Os	0	0
			7	6	1		
56	DA	1	Total	N	Os	0	0
			7	6	1		
56	DA	1	Total	N	Os	0	0
			7	6	1		
56	DA	1	Total	N	Os	0	0
			7	6	1		
56	DA	1	Total	N	Os	0	0
			7	6	1		
56	DA	1	Total	N	Os	0	0
			7	6	1		
56	DA	1	Total	N	Os	0	0
			7	6	1		
56	DA	1	Total	N	Os	0	0
			7	6	1		
56	DA	1	Total	N	Os	0	0
			7	6	1		
56	DA	1	Total	N	Os	0	0
			7	6	1		
56	DA	1	Total	N	Os	0	0
			7	6	1		
56	DA	1	Total	N	Os	0	0
			7	6	1		
56	DA	1	Total	N	Os	0	0
			7	6	1		
56	DA	1	Total	N	Os	0	0
			7	6	1		
56	DA	1	Total	N	Os	0	0
			7	6	1		
56	DA	1	Total	N	Os	0	0
			7	6	1		
56	DA	1	Total	N	Os	0	0
			7	6	1		
56	DA	1	Total	N	Os	0	0
			7	6	1		

*Continued on next page...*

*Continued from previous page...*

Mol	Chain	Residues	Atoms			ZeroOcc	AltConf
56	DA	1	Total	N	Os	0	0
			7	6	1		
56	DA	1	Total	N	Os	0	0
			7	6	1		
56	DA	1	Total	N	Os	0	0
			7	6	1		
56	DA	1	Total	N	Os	0	0
			7	6	1		
56	DA	1	Total	N	Os	0	0
			7	6	1		
56	DA	1	Total	N	Os	0	0
			7	6	1		
56	DA	1	Total	N	Os	0	0
			7	6	1		
56	DA	1	Total	N	Os	0	0
			7	6	1		
56	DA	1	Total	N	Os	0	0
			7	6	1		
56	DA	1	Total	N	Os	0	0
			7	6	1		
56	DA	1	Total	N	Os	0	0
			7	6	1		
56	DA	1	Total	N	Os	0	0
			7	6	1		
56	DA	1	Total	N	Os	0	0
			7	6	1		
56	DA	1	Total	N	Os	0	0
			7	6	1		
56	DA	1	Total	N	Os	0	0
			7	6	1		
56	DA	1	Total	N	Os	0	0
			7	6	1		
56	DA	1	Total	N	Os	0	0
			7	6	1		
56	DA	1	Total	N	Os	0	0
			7	6	1		
56	DA	1	Total	N	Os	0	0
			7	6	1		
56	DA	1	Total	N	Os	0	0
			7	6	1		

*Continued on next page...*

*Continued from previous page...*

Mol	Chain	Residues	Atoms			ZeroOcc	AltConf
56	DA	1	Total	N	Os	0	0
			7	6	1		
56	DA	1	Total	N	Os	0	0
			7	6	1		
56	DA	1	Total	N	Os	0	0
			7	6	1		
56	DA	1	Total	N	Os	0	0
			7	6	1		
56	DA	1	Total	N	Os	0	0
			7	6	1		
56	DA	1	Total	N	Os	0	0
			7	6	1		
56	DA	1	Total	N	Os	0	0
			7	6	1		
56	DA	1	Total	N	Os	0	0
			7	6	1		
56	DA	1	Total	N	Os	0	0
			7	6	1		
56	DA	1	Total	N	Os	0	0
			7	6	1		
56	DB	1	Total	N	Os	0	0
			7	6	1		
56	DB	1	Total	N	Os	0	0
			7	6	1		
56	DB	1	Total	N	Os	0	0
			7	6	1		
56	DB	1	Total	N	Os	0	0
			7	6	1		
56	DB	1	Total	N	Os	0	0
			7	6	1		
56	DB	1	Total	N	Os	0	0
			7	6	1		
56	DB	1	Total	N	Os	0	0
			7	6	1		

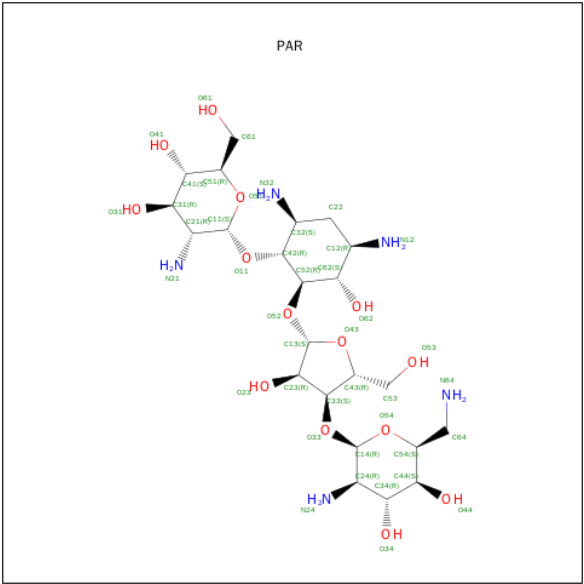
*Continued on next page...*



Continued from previous page...

Mol	Chain	Residues	Atoms			ZeroOcc	AltConf
56	DB	1	Total	N	Os	0	0
			7	6	1		
56	DB	1	Total	N	Os	0	0
			7	6	1		
56	DB	1	Total	N	Os	0	0
			7	6	1		
56	DB	1	Total	N	Os	0	0
			7	6	1		
56	DB	1	Total	N	Os	0	0
			7	6	1		
56	DF	1	Total	N	Os	0	0
			7	6	1		
56	DO	1	Total	N	Os	0	0
			7	6	1		
56	D1	1	Total	N	Os	0	0
			7	6	1		
56	D3	1	Total	N	Os	0	0
			7	6	1		
56	D5	1	Total	N	Os	0	0
			7	6	1		
56	D8	1	Total	N	Os	0	0
			7	6	1		

- Molecule 57 is PAROMOMYCIN (three-letter code: PAR) (formula: C<sub>23</sub>H<sub>45</sub>N<sub>5</sub>O<sub>14</sub>).



Mol	Chain	Residues	Atoms				ZeroOcc	AltConf
57	BA	1	Total	C	N	O	0	0
			42	23	5	14		
57	CA	1	Total	C	N	O	0	0
			42	23	5	14		

- Molecule 58 is ZINC ION (three-letter code: ZN) (formula: Zn).

Mol	Chain	Residues	Atoms		ZeroOcc	AltConf
58	BG	1	Total	Zn	0	0
			1	1		
58	BQ	1	Total	Zn	0	0
			1	1		
58	CQ	1	Total	Zn	0	0
			1	1		
58	CG	1	Total	Zn	0	0
			1	1		

MolProbity and EDS were not executed - this section will therefore be empty.

### 3 Data and refinement statistics

Xtriage (Phenix) and EDS were not executed - this section will therefore be incomplete.

Property	Value	Source
Space group	P 21 21 21	Depositor
Cell constants a, b, c, $\alpha$ , $\beta$ , $\gamma$	210.00 Å   450.33 Å   622.86 Å 90.00°   90.00°   90.00°	Depositor
Resolution (Å)	152.64 – 3.30	Depositor
% Data completeness (in resolution range)	99.8 (152.64-3.30)	Depositor
$R_{merge}$	0.41	Depositor
$R_{sym}$	(Not available)	Depositor
Refinement program	PHENIX (phenix.refine: 1.7.1_743)	Depositor
R, $R_{free}$	0.196 , 0.247	Depositor
Estimated twinning fraction	No twinning to report.	Xtriage
Total number of atoms	304031	wwPDB-VP
Average B, all atoms (Å <sup>2</sup> )	112.0	wwPDB-VP

## 4 Model quality [i](#)

### 4.1 Standard geometry [i](#)

MolProbity was not executed - this section will therefore be empty.

### 4.2 Too-close contacts [i](#)

MolProbity was not executed - this section will therefore be empty.

### 4.3 Torsion angles [i](#)

#### 4.3.1 Protein backbone [i](#)

MolProbity was not executed - this section will therefore be empty.

#### 4.3.2 Protein sidechains [i](#)

MolProbity was not executed - this section will therefore be empty.

#### 4.3.3 RNA [i](#)

MolProbity was not executed - this section will therefore be empty.

### 4.4 Non-standard residues in protein, DNA, RNA chains [i](#)

validation-pack and Mogul were not executed - this section will therefore be empty.

### 4.5 Carbohydrates [i](#)

validation-pack and Mogul were not executed - this section will therefore be empty.

### 4.6 Ligand geometry [i](#)

validation-pack and Mogul were not executed - this section will therefore be empty.

### 4.7 Other polymers [i](#)

validation-pack and Mogul were not executed - this section will therefore be empty.

## 4.8 Polymer linkage issues ⓘ

There are no chain breaks in this entry.

## 5 Fit of model and data [i](#)

### 5.1 Protein, DNA and RNA chains [i](#)

EDS was not executed - this section will therefore be empty.

### 5.2 Non-standard residues in protein, DNA, RNA chains [i](#)

EDS was not executed - this section will therefore be empty.

### 5.3 Carbohydrates [i](#)

EDS was not executed - this section will therefore be empty.

### 5.4 Ligands [i](#)

EDS was not executed - this section will therefore be empty.

### 5.5 Other polymers [i](#)

EDS was not executed - this section will therefore be empty.