



Full wwPDB X-ray Structure Validation Report ⓘ

Jan 31, 2016 – 10:48 PM GMT

PDB ID : 1V9P
Title : Crystal Structure Of Nad⁺-Dependent DNA Ligase
Authors : Lee, J.Y.; Chang, C.; Song, H.K.; Moon, J.; Yang, J.K.; Kim, H.K.; Kwon, S.K.; Suh, S.W.
Deposited on : 2004-01-27
Resolution : 2.90 Å(reported)

This is a Full wwPDB X-ray Structure Validation Report for a publicly released PDB entry.
We welcome your comments at validation@mail.wwpdb.org
A user guide is available at
<http://wwpdb.org/validation/2016/XrayValidationReportHelp>
with specific help available everywhere you see the ⓘ symbol.

The following versions of software and data (see [references ⓘ](#)) were used in the production of this report:

MolProbity : 4.02b-467
Mogul : 1.7 (RC4), CSD as536be (2015)
Xtriage (Phenix) : 1.9-1692
EDS : rb-20026688
Percentile statistics : 20151230.v01 (using entries in the PDB archive December 30th 2015)
Refmac : 5.8.0135
CCP4 : 6.5.0
Ideal geometry (proteins) : Engh & Huber (2001)
Ideal geometry (DNA, RNA) : Parkinson et al. (1996)
Validation Pipeline (wwPDB-VP) : trunk26865

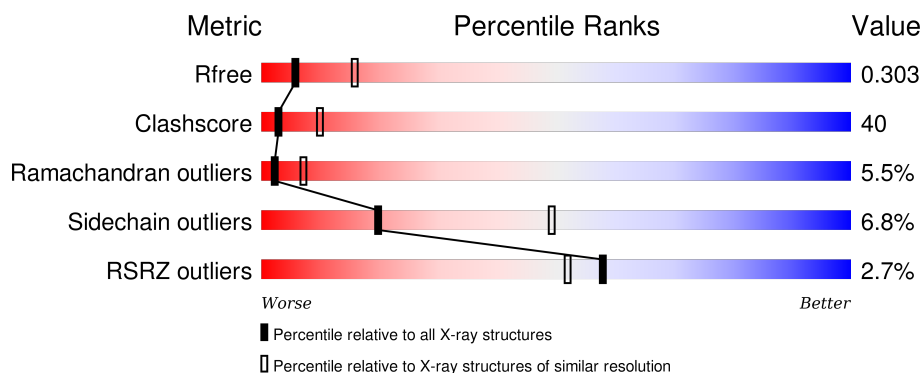
1 Overall quality at a glance

The following experimental techniques were used to determine the structure:

X-RAY DIFFRACTION

The reported resolution of this entry is 2.90 Å.

Percentile scores (ranging between 0-100) for global validation metrics of the entry are shown in the following graphic. The table shows the number of entries on which the scores are based.



Metric	Whole archive (#Entries)	Similar resolution (#Entries, resolution range(Å))
R_{free}	91344	1451 (2.90-2.90)
Clashscore	102246	1668 (2.90-2.90)
Ramachandran outliers	100387	1630 (2.90-2.90)
Sidechain outliers	100360	1632 (2.90-2.90)
RSRZ outliers	91569	1456 (2.90-2.90)

The table below summarises the geometric issues observed across the polymeric chains and their fit to the electron density. The red, orange, yellow and green segments on the lower bar indicate the fraction of residues that contain outliers for ≥ 3 , 2, 1 and 0 types of geometric quality criteria. A grey segment represents the fraction of residues that are not modelled. The numeric value for each fraction is indicated below the corresponding segment, with a dot representing fractions $\leq 5\%$. The upper red bar (where present) indicates the fraction of residues that have poor fit to the electron density. The numeric value is given above the bar.

Mol	Chain	Length	Quality of chain
1	A	584	<div> <div>3%</div> <div>44%</div> <div>48%</div> <div>8%</div> </div>
1	B	584	<div> <div>3%</div> <div>43%</div> <div>50%</div> <div>7%</div> </div>

2 Entry composition [i](#)

There are 4 unique types of molecules in this entry. The entry contains 9768 atoms, of which 0 are hydrogens and 0 are deuteriums.

In the tables below, the ZeroOcc column contains the number of atoms modelled with zero occupancy, the AltConf column contains the number of residues with at least one atom in alternate conformation and the Trace column contains the number of residues modelled with at most 2 atoms.

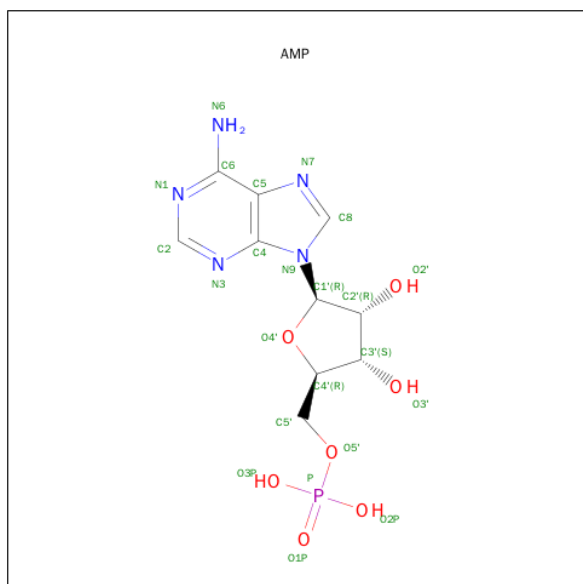
- Molecule 1 is a protein called DNA ligase.

Mol	Chain	Residues	Atoms					ZeroOcc	AltConf	Trace
1	A	584	Total	C	N	O	S	0	0	0
			4742	3000	860	871	11			
1	B	584	Total	C	N	O	S	0	0	0
			4742	3000	860	871	11			

- Molecule 2 is ZINC ION (three-letter code: ZN) (formula: Zn).

Mol	Chain	Residues	Atoms		ZeroOcc	AltConf
2	B	1	Total	Zn	0	0
			1	1		
2	A	1	Total	Zn	0	0
			1	1		

- Molecule 3 is ADENOSINE MONOPHOSPHATE (three-letter code: AMP) (formula: C₁₀H₁₄N₅O₇P).



Mol	Chain	Residues	Atoms					ZeroOcc	AltConf
3	A	1	Total	C	N	O	P	0	0
			22	10	5	6	1		
3	B	1	Total	C	N	O	P	0	0
			22	10	5	6	1		

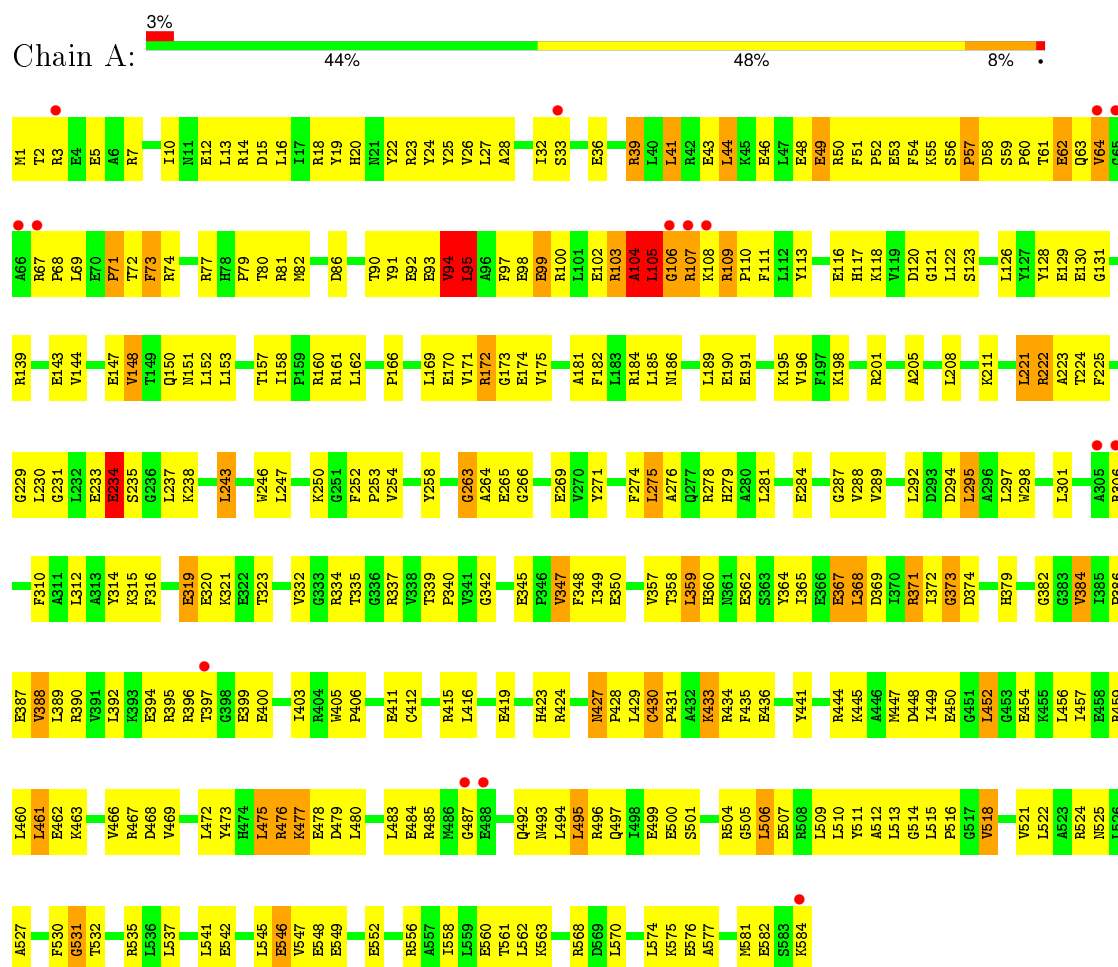
- Molecule 4 is water.

Mol	Chain	Residues	Atoms		ZeroOcc	AltConf
4	A	120	Total	O	0	0
			120	120		
4	B	118	Total	O	0	0
			118	118		

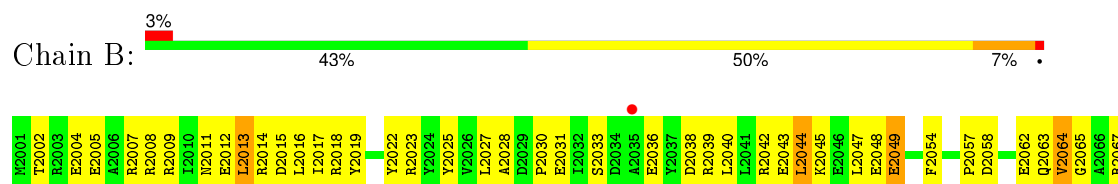
3 Residue-property plots

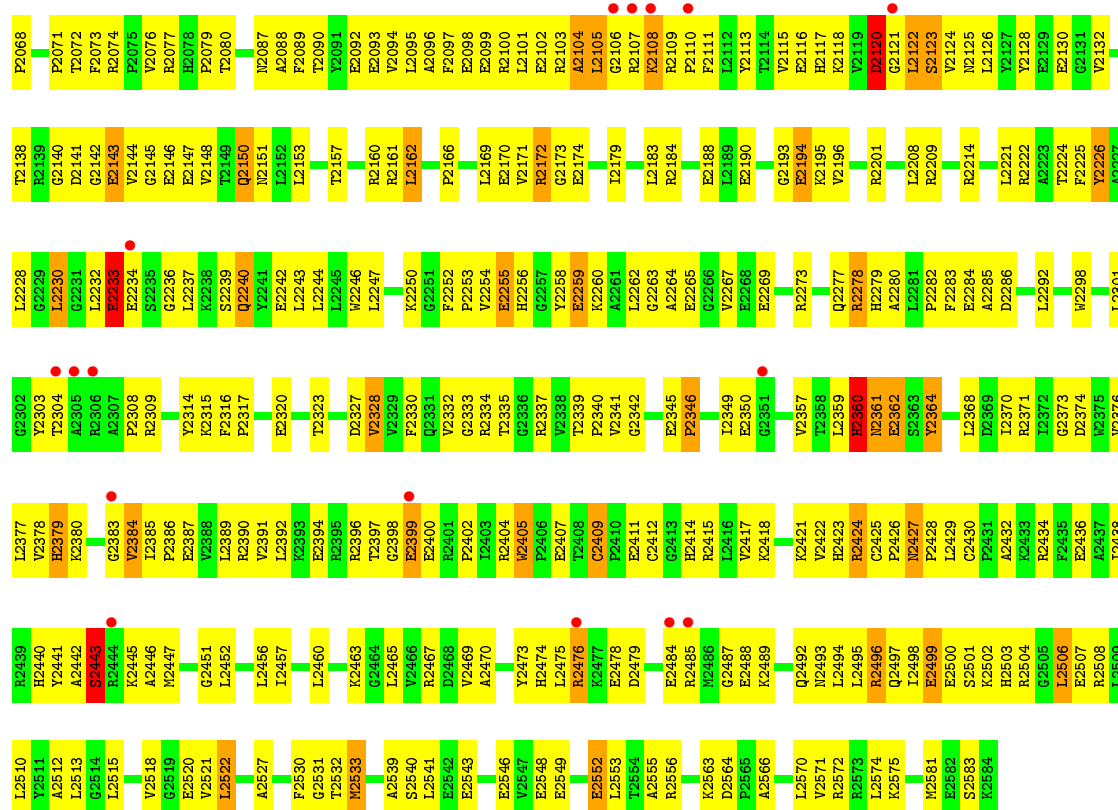
These plots are drawn for all protein, RNA and DNA chains in the entry. The first graphic for a chain summarises the proportions of errors displayed in the second graphic. The second graphic shows the sequence view annotated by issues in geometry and electron density. Residues are color-coded according to the number of geometric quality criteria for which they contain at least one outlier: green = 0, yellow = 1, orange = 2 and red = 3 or more. A red dot above a residue indicates a poor fit to the electron density ($RSRZ > 2$). Stretches of 2 or more consecutive residues without any outlier are shown as a green connector. Residues present in the sample, but not in the model, are shown in grey.

• Molecule 1: DNA ligase



• Molecule 1: DNA ligase





4 Data and refinement statistics

Property	Value	Source
Space group	P 1 21 1	Depositor
Cell constants a, b, c, α , β , γ	89.21Å 117.33Å 97.48Å 90.00° 115.09° 90.00°	Depositor
Resolution (Å)	19.93 – 2.90 24.75 – 2.88	Depositor EDS
% Data completeness (in resolution range)	89.4 (19.93-2.90) 94.4 (24.75-2.88)	Depositor EDS
R_{merge}	(Not available)	Depositor
R_{sym}	(Not available)	Depositor
$\langle I/\sigma(I) \rangle$ ¹	2.48 (at 2.89Å)	Xtriage
Refinement program	CNS 1.1	Depositor
R, R_{free}	0.232 , 0.293 0.244 , 0.303	Depositor DCC
R_{free} test set	3868 reflections (10.02%)	DCC
Wilson B-factor (Å ²)	53.4	Xtriage
Anisotropy	0.238	Xtriage
Bulk solvent k_{sol} (e/Å ³), B_{sol} (Å ²)	0.33 , 61.6	EDS
Estimated twinning fraction	0.022 for h,-k,-h-l	Xtriage
L-test for twinning ²	$\langle L \rangle = 0.48$, $\langle L^2 \rangle = 0.31$	Xtriage
Outliers	0 of 38916 reflections	Xtriage
F_o, F_c correlation	0.90	EDS
Total number of atoms	9768	wwPDB-VP
Average B, all atoms (Å ²)	52.0	wwPDB-VP

Xtriage's analysis on translational NCS is as follows: *The largest off-origin peak in the Patterson function is 3.58% of the height of the origin peak. No significant pseudotranslation is detected.*

¹Intensities estimated from amplitudes.

²Theoretical values of $\langle |L| \rangle$, $\langle L^2 \rangle$ for acentric reflections are 0.5, 0.375 respectively for untwinned datasets, and 0.333, 0.2 for perfectly twinned datasets.

5 Model quality [i](#)

5.1 Standard geometry [i](#)

Bond lengths and bond angles in the following residue types are not validated in this section: AMP, ZN

The Z score for a bond length (or angle) is the number of standard deviations the observed value is removed from the expected value. A bond length (or angle) with $|Z| > 5$ is considered an outlier worth inspection. RMSZ is the root-mean-square of all Z scores of the bond lengths (or angles).

Mol	Chain	Bond lengths		Bond angles	
		RMSZ	$\# Z > 5$	RMSZ	$\# Z > 5$
1	A	0.47	2/4832 (0.0%)	0.75	7/6514 (0.1%)
1	B	0.42	2/4832 (0.0%)	0.70	5/6514 (0.1%)
All	All	0.45	4/9664 (0.0%)	0.72	12/13028 (0.1%)

All (4) bond length outliers are listed below:

Mol	Chain	Res	Type	Atoms	Z	Observed(Å)	Ideal(Å)
1	A	359	LEU	N-CA	-6.58	1.33	1.46
1	B	2120	ASP	C-N	-6.48	1.21	1.33
1	A	487	GLY	N-CA	-5.20	1.38	1.46
1	B	2360	HIS	C-N	-5.09	1.22	1.34

All (12) bond angle outliers are listed below:

Mol	Chain	Res	Type	Atoms	Z	Observed(°)	Ideal(°)
1	A	359	LEU	CB-CA-C	11.56	132.16	110.20
1	B	2360	HIS	CA-C-N	9.32	137.70	117.20
1	A	359	LEU	N-CA-C	-8.49	88.08	111.00
1	A	94	VAL	CB-CA-C	-7.80	96.57	111.40
1	B	2360	HIS	N-CA-C	7.72	131.85	111.00
1	B	2360	HIS	O-C-N	-6.71	111.97	122.70
1	A	104	ALA	C-N-CA	6.02	136.74	121.70
1	B	2360	HIS	C-N-CA	-6.00	106.71	121.70
1	B	2120	ASP	C-N-CA	-5.88	109.96	122.30
1	A	229	GLY	N-CA-C	-5.58	99.15	113.10
1	A	233	GLU	CA-C-N	-5.52	105.05	117.20
1	A	95	LEU	N-CA-C	-5.05	97.37	111.00

There are no chirality outliers.

There are no planarity outliers.

5.2 Too-close contacts ⓘ

In the following table, the Non-H and H(model) columns list the number of non-hydrogen atoms and hydrogen atoms in the chain respectively. The H(added) column lists the number of hydrogen atoms added and optimized by MolProbity. The Clashes column lists the number of clashes within the asymmetric unit, whereas Symm-Clashes lists symmetry related clashes.

Mol	Chain	Non-H	H(model)	H(added)	Clashes	Symm-Clashes
1	A	4742	0	4797	388	0
1	B	4742	0	4794	369	0
2	A	1	0	0	0	0
2	B	1	0	0	0	0
3	A	22	0	12	2	0
3	B	22	0	12	1	0
4	A	120	0	0	15	0
4	B	118	0	0	6	0
All	All	9768	0	9615	757	0

The all-atom clashscore is defined as the number of clashes found per 1000 atoms (including hydrogen atoms). The all-atom clashscore for this structure is 40.

All (757) close contacts within the same asymmetric unit are listed below, sorted by their clash magnitude.

Atom-1	Atom-2	Interatomic distance (Å)	Clash overlap (Å)
1:B:2360:HIS:O	1:B:2361:ASN:HB3	1.37	1.11
1:A:10:ILE:HG23	1:A:14:ARG:NH1	1.68	1.09
1:A:166:PRO:CG	1:A:234:GLU:HB3	1.88	1.03
1:A:537:LEU:HD22	1:A:568:ARG:HE	1.24	1.02
1:B:2360:HIS:O	1:B:2361:ASN:CB	2.00	1.00
1:A:166:PRO:HG3	1:A:234:GLU:HB3	1.45	0.98
1:B:2077:ARG:HA	1:B:2143:GLU:O	1.65	0.94
1:A:144:VAL:HB	4:A:1002:HOH:O	1.68	0.94
1:B:2057:PRO:HA	1:B:2062:GLU:HG3	1.52	0.92
1:B:2362:GLU:HG3	1:B:2421:LYS:O	1.71	0.91
1:A:427:ASN:ND2	1:A:429:LEU:H	1.69	0.90
1:A:99:GLU:HA	1:A:102:GLU:HG3	1.53	0.90
1:B:2118:LYS:HZ1	1:B:2286:ASP:HB2	1.35	0.90
1:A:427:ASN:HD22	1:A:429:LEU:H	1.13	0.89
1:B:2105:LEU:HG	1:B:2106:GLY:N	1.88	0.89
1:B:2169:LEU:HD11	1:B:2228:LEU:HD22	1.55	0.89
1:A:319:GLU:HG2	1:A:350:GLU:HG3	1.56	0.87
1:A:537:LEU:HD22	1:A:568:ARG:NE	1.90	0.86
1:A:10:ILE:HG23	1:A:14:ARG:HH12	1.34	0.86

Continued on next page...

Continued from previous page...

Atom-1	Atom-2	Interatomic distance (Å)	Clash overlap (Å)
1:B:2445:LYS:HD3	1:B:2520:GLU:OE1	1.76	0.85
1:B:2478:GLU:HG3	1:B:2495:LEU:HD13	1.59	0.84
1:A:80:THR:HG23	1:A:230:LEU:CD2	2.07	0.84
1:A:80:THR:HG23	1:A:230:LEU:HD22	1.58	0.84
1:A:449:ILE:HG21	1:A:452:LEU:HD23	1.59	0.84
1:A:102:GLU:HA	4:A:1225:HOH:O	1.76	0.84
1:A:525:ASN:HD22	1:A:548:GLU:HB3	1.40	0.83
1:B:2074:ARG:NH1	1:B:2076:VAL:HG22	1.93	0.83
1:B:2033:SER:OG	1:B:2036:GLU:HG3	1.80	0.82
1:A:20:HIS:HA	1:A:23:ARG:HB2	1.62	0.82
1:A:105:LEU:HD22	1:A:106:GLY:H	1.44	0.81
1:A:126:LEU:HB3	1:A:128:TYR:HE1	1.45	0.81
1:B:2014:ARG:O	1:B:2018:ARG:HG3	1.80	0.81
1:A:126:LEU:HD11	1:A:152:LEU:HD13	1.63	0.80
1:B:2357:VAL:CG2	1:B:2387:GLU:HA	2.11	0.80
1:A:44:LEU:HD11	1:A:60:PRO:HD2	1.64	0.80
1:A:340:PRO:HD2	1:A:360:HIS:O	1.82	0.80
1:B:2515:LEU:O	1:B:2518:VAL:HG12	1.83	0.79
1:A:406:PRO:O	1:A:416:LEU:HD12	1.83	0.79
1:B:2023:ARG:HH11	1:B:2031:GLU:HG3	1.49	0.78
1:A:123:SER:HB2	1:A:139:ARG:HB2	1.64	0.78
1:A:44:LEU:HD22	1:A:48:GLU:OE2	1.84	0.78
1:A:94:VAL:HG12	1:A:94:VAL:O	1.81	0.77
1:B:2556:ARG:HB2	1:B:2556:ARG:NH2	1.98	0.77
1:A:196:VAL:HG21	1:A:360:HIS:CE1	2.20	0.77
1:A:105:LEU:HD21	1:A:108:LYS:O	1.83	0.77
1:A:501:SER:HA	1:A:504:ARG:HE	1.50	0.77
1:A:122:LEU:HD11	1:A:201:ARG:O	1.84	0.77
1:A:525:ASN:ND2	1:A:548:GLU:HB3	2.00	0.76
1:A:427:ASN:HD22	1:A:429:LEU:N	1.83	0.76
1:B:2122:LEU:HD13	1:B:2208:LEU:HD22	1.67	0.76
1:B:2125:ASN:HD21	1:B:2172:ARG:HE	1.32	0.76
1:B:2105:LEU:HD11	1:B:2108:LYS:H	1.50	0.76
1:B:2036:GLU:HG2	1:B:2039:ARG:NH2	2.01	0.76
1:A:507:GLU:HG3	1:A:527:ALA:HB3	1.67	0.76
1:B:2105:LEU:HD22	1:B:2111:PHE:CZ	2.20	0.75
1:A:515:LEU:HB2	1:A:518:VAL:CG1	2.16	0.75
1:A:369:ASP:OD2	1:A:371:ARG:HD2	1.85	0.75
1:A:1:MET:HB2	1:A:5:GLU:OE2	1.86	0.75
1:B:2368:LEU:HD12	1:B:2390:ARG:HA	1.69	0.75
1:A:319:GLU:HG3	1:A:349:ILE:HG23	1.69	0.75

Continued on next page...

Continued from previous page...

Atom-1	Atom-2	Interatomic distance (Å)	Clash overlap (Å)
1:B:2320:GLU:HB3	1:B:2377:LEU:HD21	1.69	0.74
1:A:118:LYS:HG2	1:A:289:VAL:HG23	1.70	0.74
1:A:541:LEU:HD21	1:A:556:ARG:NH1	2.02	0.74
1:B:2105:LEU:HD22	1:B:2111:PHE:HZ	1.53	0.73
1:A:103:ARG:O	1:A:104:ALA:HB2	1.88	0.73
1:B:2383:GLY:HA2	4:B:1020:HOH:O	1.89	0.72
1:A:459:ARG:HH11	1:A:462:GLU:HB3	1.54	0.72
1:B:2067:ARG:CG	1:B:2068:PRO:HD2	2.18	0.72
1:B:2417:VAL:HG22	1:B:2418:LYS:H	1.54	0.72
1:B:2109:ARG:HB3	1:B:2110:PRO:HD3	1.71	0.72
1:B:2193:GLY:HA3	1:B:2421:LYS:HB2	1.72	0.72
1:A:515:LEU:HB2	1:A:518:VAL:HG11	1.71	0.72
1:B:2171:VAL:HG21	1:B:2252:PHE:CZ	2.25	0.72
1:A:320:GLU:C	1:A:321:LYS:HD2	2.10	0.71
1:B:2494:LEU:HA	1:B:2497:GLN:HE21	1.54	0.71
1:B:2384:VAL:HG13	1:B:2385:ILE:H	1.53	0.71
1:B:2058:ASP:OD2	1:B:2147:GLU:HG3	1.91	0.71
1:A:100:ARG:O	1:A:103:ARG:HG2	1.91	0.71
1:B:2376:VAL:HG12	1:B:2391:VAL:HA	1.71	0.71
1:A:118:LYS:NZ	3:A:700:AMP:P	2.64	0.70
1:B:2162:LEU:HD21	1:B:2252:PHE:CE2	2.25	0.70
1:A:358:THR:C	1:A:359:LEU:O	2.18	0.70
1:A:358:THR:OG1	1:A:359:LEU:O	2.08	0.70
1:A:14:ARG:HG2	1:A:60:PRO:CD	2.22	0.70
1:A:105:LEU:CD2	1:A:106:GLY:H	2.05	0.70
1:A:515:LEU:HD23	1:A:561:THR:HG21	1.74	0.70
1:A:445:LYS:HB3	1:A:511:TYR:CE2	2.27	0.69
1:B:2036:GLU:O	1:B:2040:LEU:HG	1.93	0.69
1:B:2125:ASN:ND2	1:B:2172:ARG:NE	2.40	0.69
1:A:278:ARG:NH1	1:A:316:PHE:HB3	2.07	0.69
1:B:2008:ARG:HA	1:B:2011:ASN:HD22	1.57	0.69
1:A:41:LEU:HD21	1:A:64:VAL:HG11	1.74	0.69
1:B:2121:GLY:O	1:B:2201:ARG:HG3	1.93	0.69
1:A:278:ARG:HG2	1:A:279:HIS:CD2	2.28	0.69
1:A:449:ILE:CG2	1:A:452:LEU:HD23	2.22	0.68
1:A:524:ARG:HB2	1:A:524:ARG:NH1	2.09	0.68
1:B:2105:LEU:HD21	1:B:2108:LYS:N	2.08	0.68
1:B:2357:VAL:HG23	1:B:2387:GLU:HA	1.74	0.68
1:A:445:LYS:HB3	1:A:511:TYR:HE2	1.57	0.68
1:B:2125:ASN:HD21	1:B:2172:ARG:NE	1.92	0.68
1:B:2140:GLY:HA3	1:B:2144:VAL:O	1.94	0.67

Continued on next page...

Continued from previous page...

Atom-1	Atom-2	Interatomic distance (Å)	Clash overlap (Å)
1:B:2195:LYS:HE3	1:B:2364:TYR:CD1	2.28	0.67
1:A:14:ARG:HG2	1:A:60:PRO:HD3	1.77	0.67
1:B:2038:ASP:O	1:B:2042:ARG:HG3	1.95	0.67
1:A:506:LEU:HD22	1:A:510:LEU:HG	1.77	0.67
1:B:2015:ASP:OD2	1:B:2161:ARG:NH1	2.26	0.67
1:A:71:PRO:HG2	1:A:73:PHE:HE2	1.59	0.67
1:A:332:VAL:CG1	1:A:411:GLU:HG3	2.25	0.67
1:A:46:GLU:O	1:A:50:ARG:HG2	1.94	0.67
1:B:2039:ARG:HG3	1:B:2042:ARG:NH2	2.10	0.67
1:B:2196:VAL:HG21	1:B:2360:HIS:CD2	2.30	0.67
1:B:2122:LEU:CD1	1:B:2208:LEU:HD22	2.24	0.66
1:A:518:VAL:HG13	1:A:518:VAL:O	1.93	0.66
1:A:118:LYS:HZ3	3:A:700:AMP:P	2.18	0.66
1:B:2384:VAL:HG22	1:B:2385:ILE:N	2.10	0.66
1:A:61:THR:HA	1:A:64:VAL:HG13	1.76	0.66
1:B:2190:GLU:HG2	1:B:2337:ARG:NH1	2.10	0.66
1:B:2469:VAL:HG23	1:B:2574:LEU:HD21	1.75	0.66
1:A:57:PRO:HA	1:A:62:GLU:HG3	1.76	0.66
1:A:49:GLU:OE1	1:A:55:LYS:HE2	1.96	0.66
1:B:2067:ARG:HG2	1:B:2068:PRO:HD2	1.78	0.66
1:A:427:ASN:ND2	1:A:429:LEU:N	2.44	0.65
1:B:2101:LEU:HD21	1:B:2292:LEU:HD13	1.77	0.65
1:B:2105:LEU:CD1	1:B:2108:LYS:HB2	2.26	0.65
1:B:2349:ILE:CG2	1:B:2380:LYS:HE3	2.26	0.65
1:B:2172:ARG:HH21	1:B:2172:ARG:HG2	1.60	0.65
1:B:2118:LYS:NZ	1:B:2286:ASP:HB2	2.10	0.65
1:B:2510:LEU:HD12	1:B:2527:ALA:HB2	1.78	0.65
1:A:397:THR:HG23	1:A:399:GLU:H	1.61	0.65
1:B:2073:PHE:HB3	1:B:2146:GLU:OE1	1.97	0.65
1:B:2057:PRO:CA	1:B:2062:GLU:HG3	2.27	0.64
1:A:452:LEU:HD12	1:A:457:ILE:HG12	1.77	0.64
1:A:39:ARG:HA	1:A:39:ARG:HE	1.60	0.64
1:A:463:LYS:HE2	4:A:1145:HOH:O	1.96	0.64
1:A:175:VAL:HG22	1:A:223:ALA:HB2	1.78	0.64
1:A:93:GLU:O	1:A:94:VAL:CB	2.44	0.64
1:A:195:LYS:HD2	1:A:367:GLU:HG2	1.80	0.64
1:B:2141:ASP:HB3	4:B:1006:HOH:O	1.96	0.64
1:A:332:VAL:HG12	1:A:411:GLU:HG3	1.79	0.64
1:B:2079:PRO:HB2	1:B:2170:GLU:OE2	1.97	0.64
1:A:548:GLU:O	1:A:549:GLU:HB2	1.98	0.64
1:B:2504:ARG:HD2	1:B:2508:ARG:HH21	1.63	0.64

Continued on next page...

Continued from previous page...

Atom-1	Atom-2	Interatomic distance (Å)	Clash overlap (Å)
1:B:2142:GLY:O	1:B:2143:GLU:CB	2.45	0.63
1:B:2530:PHE:O	1:B:2532:THR:N	2.29	0.63
1:A:14:ARG:HH11	1:A:14:ARG:HG3	1.61	0.63
1:B:2556:ARG:HB2	1:B:2556:ARG:HH21	1.62	0.63
1:A:278:ARG:HH11	1:A:316:PHE:HB3	1.64	0.63
1:B:2460:LEU:HD23	1:B:2465:LEU:HD12	1.79	0.63
1:B:2405:TRP:CB	1:B:2423:HIS:HD1	2.12	0.63
1:A:71:PRO:HB3	1:A:150:GLN:HB2	1.81	0.63
1:B:2039:ARG:HG3	1:B:2042:ARG:HH21	1.63	0.63
1:A:152:LEU:HD23	1:A:208:LEU:HD11	1.79	0.63
1:B:2080:THR:CG2	1:B:2230:LEU:HD23	2.29	0.63
1:B:2120:ASP:OD2	1:B:2284:GLU:HB3	1.98	0.63
1:A:457:ILE:O	1:A:461:LEU:HD23	1.99	0.62
1:A:93:GLU:O	1:A:94:VAL:HB	2.00	0.62
1:A:16:LEU:HD11	1:A:161:ARG:HH22	1.63	0.62
1:A:166:PRO:CG	1:A:234:GLU:CB	2.72	0.62
1:A:335:THR:HG23	1:A:337:ARG:H	1.62	0.62
1:A:109:ARG:HB3	1:A:110:PRO:HD3	1.80	0.62
1:B:2328:VAL:HG22	1:B:2328:VAL:O	1.99	0.62
1:B:2142:GLY:O	1:B:2143:GLU:HB2	1.98	0.62
1:A:372:ILE:O	1:A:374:ASP:N	2.33	0.62
1:B:2222:ARG:HG2	1:B:2222:ARG:HH21	1.65	0.62
1:A:198:LYS:HE3	1:A:364:TYR:OH	2.00	0.62
1:A:542:GLU:O	1:A:546:GLU:HG3	2.00	0.62
1:B:2361:ASN:O	1:B:2362:GLU:C	2.38	0.62
1:B:2357:VAL:HG21	1:B:2387:GLU:HA	1.81	0.62
1:A:61:THR:O	1:A:63:GLN:N	2.33	0.61
1:B:2077:ARG:NH1	1:B:2143:GLU:HB3	2.15	0.61
1:B:2148:VAL:HG22	1:B:2148:VAL:O	1.99	0.61
1:A:493:ASN:O	1:A:496:ARG:HG2	2.01	0.61
1:B:2556:ARG:HH21	1:B:2556:ARG:CB	2.13	0.61
1:B:2099:GLU:O	1:B:2102:GLU:HB2	2.01	0.61
1:B:2316:PHE:HB3	1:B:2317:PRO:HD2	1.83	0.61
1:B:2105:LEU:CG	1:B:2106:GLY:N	2.60	0.61
1:B:2172:ARG:NH2	1:B:2172:ARG:HG2	2.16	0.61
1:B:2122:LEU:HD11	1:B:2208:LEU:CD2	2.31	0.61
1:A:33:SER:HB2	1:A:36:GLU:H	1.65	0.61
1:B:2518:VAL:HG13	1:B:2518:VAL:O	2.01	0.61
1:A:10:ILE:HD12	1:A:54:PHE:HD1	1.66	0.61
1:A:14:ARG:NH1	1:A:44:LEU:HD21	2.16	0.61
1:B:2094:VAL:O	1:B:2097:PHE:HB3	1.99	0.61

Continued on next page...

Continued from previous page...

Atom-1	Atom-2	Interatomic distance (Å)	Clash overlap (Å)
1:A:126:LEU:HB3	1:A:128:TYR:CE1	2.33	0.60
1:B:2122:LEU:CD1	1:B:2208:LEU:CD2	2.79	0.60
1:A:441:TYR:CE1	1:A:469:VAL:HG11	2.37	0.60
1:B:2184:ARG:O	1:B:2188:GLU:HG3	2.02	0.60
1:A:71:PRO:HG2	1:A:73:PHE:CE2	2.36	0.60
1:A:319:GLU:CG	1:A:350:GLU:HG3	2.30	0.60
1:B:2222:ARG:NH2	1:B:2222:ARG:HG2	2.15	0.60
1:A:237:LEU:CD1	1:A:243:LEU:HD12	2.32	0.60
1:A:172:ARG:HG2	1:A:172:ARG:HH21	1.67	0.60
1:B:2065:GLY:C	1:B:2067:ARG:H	2.04	0.60
1:B:2417:VAL:HG22	1:B:2418:LYS:N	2.17	0.60
1:A:372:ILE:HG22	1:A:373:GLY:N	2.17	0.60
1:A:16:LEU:HD11	1:A:161:ARG:NH2	2.15	0.60
1:A:522:LEU:HD13	1:A:522:LEU:O	2.01	0.60
1:B:2240:GLN:NE2	1:B:2243:LEU:HD13	2.16	0.60
1:B:2228:LEU:HD12	1:B:2232:LEU:HD23	1.84	0.59
1:A:56:SER:C	1:A:58:ASP:H	2.05	0.59
1:B:2240:GLN:HE21	1:B:2243:LEU:HD13	1.66	0.59
1:A:57:PRO:HG2	1:A:74:ARG:CD	2.32	0.59
1:B:2002:THR:HG23	1:B:2005:GLU:H	1.67	0.59
1:A:67:ARG:HB3	1:A:68:PRO:HD2	1.85	0.59
1:B:2013:LEU:O	1:B:2017:ILE:HG13	2.01	0.59
1:B:2072:THR:HG22	4:B:1094:HOH:O	2.02	0.59
1:A:105:LEU:HD21	1:A:108:LYS:C	2.22	0.59
1:A:184:ARG:NH1	4:A:1154:HOH:O	2.34	0.59
1:A:166:PRO:HB3	1:A:234:GLU:CG	2.32	0.59
1:B:2349:ILE:HD11	1:B:2378:VAL:HG13	1.84	0.59
1:B:2506:LEU:HB3	1:B:2527:ALA:HB1	1.84	0.59
1:A:284:GLU:OE2	1:A:382:GLY:HA2	2.01	0.59
1:A:103:ARG:O	1:A:104:ALA:CB	2.51	0.59
1:A:148:VAL:HG22	1:A:151:ASN:HB2	1.84	0.59
1:A:41:LEU:HD21	1:A:64:VAL:CG1	2.33	0.58
1:B:2103:ARG:O	1:B:2104:ALA:HB3	2.02	0.58
1:A:459:ARG:HE	1:A:459:ARG:HA	1.67	0.58
1:A:16:LEU:CD1	1:A:161:ARG:HH22	2.17	0.58
1:B:2224:THR:O	1:B:2224:THR:HG23	2.02	0.58
1:B:2349:ILE:HG22	1:B:2380:LYS:HE3	1.85	0.58
1:B:2496:ARG:HH11	1:B:2496:ARG:HG3	1.69	0.58
1:A:82:MET:HG2	1:A:172:ARG:NH2	2.18	0.58
1:B:2122:LEU:O	1:B:2123:SER:C	2.41	0.58
1:B:2179:ILE:O	1:B:2183:LEU:HG	2.04	0.58

Continued on next page...

Continued from previous page...

Atom-1	Atom-2	Interatomic distance (Å)	Clash overlap (Å)
1:B:2359:LEU:O	1:B:2361:ASN:N	2.37	0.58
1:A:205:ALA:HB3	4:A:1207:HOH:O	2.03	0.58
1:A:441:TYR:CZ	1:A:447:MET:HG3	2.38	0.58
1:B:2533:MET:HE3	1:B:2571:VAL:HG21	1.85	0.58
1:A:172:ARG:HG2	1:A:172:ARG:NH2	2.19	0.58
1:B:2190:GLU:HG3	1:B:2360:HIS:HB3	1.85	0.57
1:A:98:GLU:OE2	1:A:263:GLY:HA2	2.02	0.57
1:B:2123:SER:HA	1:B:2174:GLU:HG2	1.85	0.57
1:B:2157:THR:HG21	1:B:2222:ARG:HH22	1.69	0.57
1:A:494:LEU:HD23	1:A:494:LEU:O	2.03	0.57
1:A:12:GLU:O	1:A:16:LEU:HD13	2.03	0.57
1:B:2452:LEU:HD12	1:B:2456:LEU:HD23	1.86	0.57
1:B:2362:GLU:OE1	1:B:2422:VAL:HA	2.05	0.57
1:A:298:TRP:O	1:A:301:LEU:O	2.23	0.57
1:A:478:GLU:OE1	1:A:492:GLN:HG2	2.04	0.57
1:B:2426:PRO:O	1:B:2428:PRO:HD3	2.05	0.57
1:A:186:ASN:OD1	1:A:196:VAL:HB	2.04	0.57
1:A:173:GLY:HA3	1:A:225:PHE:CD1	2.39	0.57
1:B:2122:LEU:O	1:B:2122:LEU:HD22	2.05	0.57
1:B:2548:GLU:OE2	1:B:2549:GLU:HG2	2.04	0.57
1:B:2105:LEU:HD11	1:B:2108:LYS:HB2	1.87	0.57
1:B:2150:GLN:HE21	1:B:2150:GLN:CA	2.18	0.57
1:A:507:GLU:HG3	1:A:527:ALA:CB	2.34	0.57
1:A:58:ASP:CG	1:A:74:ARG:HE	2.08	0.57
1:A:469:VAL:HG12	1:A:574:LEU:HD21	1.84	0.57
1:B:2148:VAL:HG22	1:B:2151:ASN:HB2	1.85	0.56
1:B:2194:GLU:O	1:B:2361:ASN:ND2	2.36	0.56
1:B:2157:THR:HB	1:B:2253:PRO:HB3	1.86	0.56
1:A:113:TYR:HD2	1:A:292:LEU:HA	1.70	0.56
1:B:2162:LEU:HD21	1:B:2252:PHE:CZ	2.40	0.56
1:B:2087:ASN:ND2	1:B:2315:LYS:HD2	2.19	0.56
1:B:2337:ARG:HD2	1:B:2422:VAL:HG11	1.86	0.56
1:A:247:LEU:O	1:A:252:PHE:HB2	2.06	0.56
1:B:2002:THR:HG22	1:B:2005:GLU:CG	2.35	0.56
1:B:2563:LYS:HD3	4:B:1176:HOH:O	2.06	0.56
1:A:484:GLU:O	1:A:485:ARG:HB2	2.06	0.56
1:B:2122:LEU:O	1:B:2124:VAL:HG13	2.05	0.56
1:A:237:LEU:HD12	1:A:243:LEU:HD12	1.87	0.56
1:A:542:GLU:OE1	1:A:542:GLU:N	2.24	0.56
1:B:2105:LEU:HD11	1:B:2108:LYS:CB	2.36	0.56
1:B:2320:GLU:O	1:B:2377:LEU:HD11	2.05	0.55

Continued on next page...

Continued from previous page...

Atom-1	Atom-2	Interatomic distance (Å)	Clash overlap (Å)
1:B:2418:LYS:HD2	1:B:2423:HIS:NE2	2.21	0.55
1:B:2418:LYS:HD2	1:B:2423:HIS:CD2	2.40	0.55
1:A:495:LEU:HD13	1:A:495:LEU:O	2.07	0.55
1:B:2014:ARG:HD3	1:B:2018:ARG:HH21	1.71	0.55
1:A:501:SER:O	1:A:504:ARG:HG2	2.06	0.55
1:A:122:LEU:HB3	4:A:1079:HOH:O	2.06	0.55
1:B:2258:TYR:O	1:B:2259:GLU:HB3	2.06	0.55
1:A:14:ARG:HG2	1:A:60:PRO:HD2	1.88	0.55
1:A:501:SER:HA	1:A:504:ARG:NE	2.18	0.55
1:B:2492:GLN:O	1:B:2496:ARG:HB3	2.06	0.55
1:A:105:LEU:CD2	1:A:108:LYS:H	2.19	0.55
1:A:340:PRO:CD	1:A:360:HIS:O	2.51	0.55
1:A:157:THR:OG1	1:A:253:PRO:HG3	2.06	0.55
1:B:2405:TRP:CG	1:B:2423:HIS:ND1	2.75	0.55
1:B:2379:HIS:O	1:B:2386:PRO:HA	2.06	0.55
1:B:2246:TRP:CH2	1:B:2250:LYS:HG3	2.42	0.55
1:A:57:PRO:O	1:A:72:THR:HG21	2.06	0.55
1:A:105:LEU:HG	4:A:1225:HOH:O	2.06	0.55
1:B:2142:GLY:O	1:B:2143:GLU:HG3	2.06	0.55
1:A:93:GLU:O	1:A:94:VAL:HG23	2.07	0.55
1:B:2004:GLU:OE2	1:B:2007:ARG:NH2	2.37	0.55
1:A:339:THR:HG23	1:A:340:PRO:HD2	1.89	0.55
1:A:479:ASP:HB2	4:A:1159:HOH:O	2.08	0.54
1:B:2518:VAL:HG23	1:B:2522:LEU:HB3	1.89	0.54
1:A:477:LYS:HB2	1:A:480:LEU:HG	1.89	0.54
1:A:570:LEU:O	1:A:574:LEU:HD12	2.07	0.54
1:A:379:HIS:O	1:A:386:PRO:HA	2.08	0.54
1:A:173:GLY:HA3	1:A:225:PHE:HA	1.88	0.54
1:B:2339:THR:HG23	1:B:2340:PRO:HD2	1.89	0.54
1:A:126:LEU:HD23	1:A:128:TYR:OH	2.07	0.54
1:A:152:LEU:O	1:A:158:ILE:HD12	2.08	0.54
1:B:2173:GLY:HA2	1:B:2225:PHE:HA	1.90	0.54
1:B:2497:GLN:HA	1:B:2500:GLU:HG3	1.90	0.54
1:B:2327:ASP:OD1	1:B:2328:VAL:N	2.24	0.54
1:A:53:GLU:HG3	1:A:54:PHE:CD2	2.42	0.54
1:B:2102:GLU:OE1	1:B:2109:ARG:HA	2.07	0.54
1:B:2521:VAL:HG13	1:B:2522:LEU:N	2.22	0.54
1:B:2237:LEU:HD21	1:B:2246:TRP:CD1	2.43	0.53
1:A:235:SER:OG	1:A:237:LEU:HG	2.08	0.53
1:A:271:TYR:O	1:A:274:PHE:HB2	2.09	0.53
1:B:2434:ARG:O	1:B:2438:ILE:HG12	2.08	0.53

Continued on next page...

Continued from previous page...

Atom-1	Atom-2	Interatomic distance (Å)	Clash overlap (Å)
1:A:532:THR:HG22	1:A:582:GLU:HG2	1.90	0.53
1:A:117:HIS:CD2	1:A:281:LEU:HD11	2.43	0.53
1:A:170:GLU:OE2	1:A:230:LEU:HD23	2.09	0.53
1:A:171:VAL:HG21	1:A:252:PHE:CE1	2.44	0.53
1:B:2328:VAL:HA	1:B:2342:GLY:HA2	1.91	0.53
1:B:2107:ARG:O	1:B:2109:ARG:N	2.41	0.53
1:B:2113:TYR:HD2	1:B:2292:LEU:HA	1.73	0.53
1:A:556:ARG:HB2	1:A:556:ARG:NH2	2.23	0.53
1:B:2494:LEU:HA	1:B:2497:GLN:HG2	1.91	0.53
1:B:2298:TRP:O	1:B:2301:LEU:O	2.27	0.53
1:A:106:GLY:O	1:A:107:ARG:HB2	2.07	0.53
1:B:2009:ARG:NH2	1:B:2043:GLU:OE1	2.42	0.53
1:B:2409:CYS:SG	1:B:2411:GLU:N	2.74	0.53
1:A:69:LEU:O	1:A:150:GLN:HG3	2.09	0.53
1:B:2532:THR:HG22	1:B:2533:MET:N	2.24	0.53
1:A:123:SER:HA	1:A:174:GLU:HG2	1.91	0.53
1:A:545:LEU:O	1:A:547:VAL:N	2.42	0.53
1:A:57:PRO:HG2	1:A:74:ARG:HD2	1.90	0.53
1:A:297:LEU:O	1:A:301:LEU:HD12	2.09	0.53
1:B:2103:ARG:O	1:B:2104:ALA:CB	2.56	0.52
1:B:2090:THR:O	1:B:2094:VAL:HG23	2.07	0.52
1:A:558:ILE:O	1:A:562:LEU:HG	2.08	0.52
1:B:2118:LYS:HD2	3:B:2700:AMP:P	2.50	0.52
1:A:79:PRO:HB2	1:A:170:GLU:OE2	2.09	0.52
1:B:2239:SER:HB3	1:B:2242:GLU:HB2	1.90	0.52
1:A:320:GLU:O	1:A:321:LYS:HD2	2.09	0.52
1:A:224:THR:HA	1:A:253:PRO:O	2.10	0.52
1:B:2106:GLY:O	1:B:2107:ARG:HG2	2.09	0.52
1:A:41:LEU:CD2	1:A:64:VAL:HG11	2.40	0.52
1:B:2407:GLU:HG2	1:B:2415:ARG:NH1	2.25	0.52
1:A:535:ARG:HG3	1:A:535:ARG:HH21	1.74	0.52
1:A:14:ARG:HG3	1:A:14:ARG:NH1	2.25	0.52
1:A:44:LEU:CD1	1:A:60:PRO:HD2	2.39	0.52
1:B:2076:VAL:O	1:B:2144:VAL:HA	2.09	0.52
1:A:95:LEU:CD1	1:A:109:ARG:HH21	2.23	0.52
1:B:2239:SER:HB3	1:B:2242:GLU:CG	2.39	0.52
1:B:2105:LEU:HD13	1:B:2108:LYS:HB2	1.92	0.52
1:B:2067:ARG:HG3	1:B:2068:PRO:HD2	1.90	0.52
1:B:2008:ARG:HA	1:B:2011:ASN:ND2	2.24	0.52
1:A:113:TYR:CD2	1:A:292:LEU:HA	2.44	0.52
1:A:105:LEU:CD2	1:A:106:GLY:N	2.72	0.52

Continued on next page...

Continued from previous page...

Atom-1	Atom-2	Interatomic distance (Å)	Clash overlap (Å)
1:B:2095:LEU:HD13	1:B:2109:ARG:HH21	1.75	0.52
1:A:459:ARG:CA	1:A:459:ARG:HE	2.23	0.52
1:A:388:VAL:O	1:A:388:VAL:HG22	2.10	0.52
1:A:347:VAL:HG22	1:A:348:PHE:H	1.74	0.52
1:A:22:TYR:HA	1:A:26:VAL:HG23	1.92	0.52
1:A:162:LEU:CD2	1:A:169:LEU:HD23	2.40	0.51
1:A:151:ASN:ND2	1:A:208:LEU:O	2.43	0.51
1:A:153:LEU:HD11	1:A:160:ARG:HD3	1.93	0.51
1:B:2222:ARG:HD3	1:B:2255:GLU:OE1	2.11	0.51
1:A:509:LEU:O	1:A:513:LEU:HD13	2.10	0.51
1:B:2057:PRO:HG2	1:B:2074:ARG:NE	2.25	0.51
1:B:2162:LEU:HD21	1:B:2252:PHE:HE2	1.70	0.51
1:B:2043:GLU:O	1:B:2047:LEU:HD13	2.11	0.51
1:A:14:ARG:NH2	1:A:59:SER:HB2	2.26	0.51
1:A:94:VAL:CG1	1:A:94:VAL:O	2.51	0.51
1:B:2440:HIS:O	1:B:2440:HIS:HD2	1.93	0.51
1:A:14:ARG:HE	1:A:59:SER:HB2	1.75	0.51
1:A:109:ARG:H	1:A:110:PRO:CD	2.23	0.51
1:B:2392:LEU:C	1:B:2394:GLU:H	2.13	0.51
1:B:2441:TYR:CZ	1:B:2447:MET:HG3	2.46	0.51
1:A:563:LYS:HE2	4:A:1134:HOH:O	2.10	0.51
1:B:2095:LEU:HD11	1:B:2109:ARG:NE	2.26	0.51
1:A:238:LYS:C	1:A:295:LEU:HD22	2.30	0.51
1:B:2309:ARG:HB2	1:B:2309:ARG:NH1	2.25	0.51
1:A:99:GLU:CA	1:A:102:GLU:HG3	2.34	0.51
1:B:2120:ASP:O	1:B:2121:GLY:C	2.46	0.51
1:B:2102:GLU:HG2	1:B:2105:LEU:HD23	1.93	0.51
1:A:122:LEU:HD21	1:A:205:ALA:HB2	1.93	0.51
1:B:2157:THR:OG1	1:B:2253:PRO:HG3	2.12	0.50
1:A:118:LYS:HG3	1:A:288:VAL:CA	2.41	0.50
1:A:13:LEU:HD11	1:A:43:GLU:HG2	1.92	0.50
1:A:118:LYS:CG	1:A:289:VAL:HG23	2.39	0.50
1:A:278:ARG:O	1:A:279:HIS:HD2	1.94	0.50
1:B:2487:GLY:O	1:B:2489:LYS:N	2.44	0.50
1:A:505:GLY:HA3	1:A:584:LYS:HB2	1.92	0.50
1:B:2436:GLU:OE1	1:B:2436:GLU:HA	2.11	0.50
1:A:14:ARG:NE	1:A:59:SER:HB2	2.26	0.50
1:B:2109:ARG:NH1	1:B:2109:ARG:HG2	2.27	0.50
1:B:2023:ARG:NH1	1:B:2031:GLU:HG3	2.23	0.50
1:B:2171:VAL:HG12	1:B:2225:PHE:HD1	1.77	0.50
1:A:399:GLU:O	1:A:399:GLU:HG2	2.12	0.50

Continued on next page...

Continued from previous page...

Atom-1	Atom-2	Interatomic distance (Å)	Clash overlap (Å)
1:B:2371:ARG:HB3	1:B:2400:GLU:HB3	1.93	0.50
1:A:254:VAL:HG13	1:A:254:VAL:O	2.11	0.50
1:B:2361:ASN:O	1:B:2361:ASN:OD1	2.29	0.50
1:B:2225:PHE:N	1:B:2225:PHE:CD2	2.79	0.50
1:A:27:LEU:O	1:A:28:ALA:HB3	2.11	0.50
1:A:419:GLU:OE1	1:A:424:ARG:HD2	2.12	0.50
1:A:475:LEU:O	1:A:476:ARG:C	2.50	0.50
1:B:2265:GLU:CD	1:B:2265:GLU:H	2.14	0.50
1:B:2501:SER:O	1:B:2503:HIS:N	2.44	0.50
1:A:109:ARG:N	1:A:110:PRO:CD	2.74	0.50
1:A:379:HIS:HD2	4:A:702:HOH:O	1.94	0.50
1:A:450:GLU:HB2	1:A:497:GLN:HE22	1.77	0.50
1:A:14:ARG:HH21	1:A:59:SER:HB2	1.77	0.50
1:B:2142:GLY:O	1:B:2143:GLU:CG	2.60	0.50
1:B:2098:GLU:O	1:B:2101:LEU:HB3	2.11	0.50
1:A:473:TYR:O	1:A:476:ARG:HG3	2.11	0.50
1:B:2396:ARG:HA	1:B:2400:GLU:OE1	2.12	0.50
1:B:2109:ARG:HH11	1:B:2109:ARG:HG2	1.77	0.50
1:A:195:LYS:CD	1:A:367:GLU:HG2	2.42	0.50
1:A:129:GLU:C	1:A:131:GLY:N	2.66	0.50
1:B:2122:LEU:HD11	1:B:2208:LEU:HD23	1.93	0.49
1:A:542:GLU:CD	1:A:542:GLU:H	2.07	0.49
1:B:2063:GLN:O	1:B:2064:VAL:O	2.30	0.49
1:A:111:PHE:HE1	4:A:1225:HOH:O	1.95	0.49
1:A:148:VAL:HG22	1:A:148:VAL:O	2.13	0.49
1:A:185:LEU:HD12	1:A:185:LEU:O	2.11	0.49
1:A:389:LEU:CD1	1:A:390:ARG:HG2	2.42	0.49
1:A:447:MET:CE	1:A:509:LEU:HD23	2.42	0.49
1:A:472:LEU:O	1:A:475:LEU:HB2	2.12	0.49
1:A:430:CYS:HB3	1:A:433:LYS:HD3	1.94	0.49
1:A:108:LYS:HE3	1:A:111:PHE:HE2	1.78	0.49
1:A:459:ARG:NE	1:A:459:ARG:HA	2.28	0.49
1:B:2044:LEU:HD22	1:B:2048:GLU:CD	2.33	0.49
1:A:94:VAL:HA	1:A:97:PHE:HB3	1.94	0.49
1:B:2495:LEU:HD23	1:B:2495:LEU:O	2.13	0.49
1:B:2122:LEU:HD11	1:B:2208:LEU:CB	2.43	0.49
1:A:524:ARG:HB2	1:A:524:ARG:HH11	1.77	0.49
1:A:77:ARG:HG3	4:A:1090:HOH:O	2.13	0.49
1:A:266:GLY:O	1:A:269:GLU:HB3	2.13	0.49
1:B:2195:LYS:HE3	1:B:2364:TYR:HD1	1.77	0.49
1:A:433:LYS:NZ	1:A:433:LYS:CB	2.76	0.49

Continued on next page...

Continued from previous page...

Atom-1	Atom-2	Interatomic distance (Å)	Clash overlap (Å)
1:B:2451:GLY:HA3	1:B:2497:GLN:NE2	2.28	0.49
1:B:2533:MET:HG2	1:B:2571:VAL:HG21	1.95	0.49
1:B:2411:GLU:HG2	1:B:2432:ALA:HB2	1.95	0.49
1:A:22:TYR:HA	1:A:26:VAL:CG2	2.42	0.49
1:A:105:LEU:CD2	1:A:108:LYS:HG2	2.42	0.49
1:B:2113:TYR:O	1:B:2260:LYS:HA	2.13	0.48
1:B:2533:MET:CE	1:B:2571:VAL:HG21	2.43	0.48
1:B:2397:THR:HG23	1:B:2399:GLU:H	1.78	0.48
1:B:2222:ARG:NH2	1:B:2255:GLU:OE2	2.46	0.48
1:A:531:GLY:O	1:A:582:GLU:HA	2.13	0.48
1:B:2424:ARG:CB	1:B:2424:ARG:HH21	2.26	0.48
1:B:2196:VAL:HG21	1:B:2360:HIS:HD2	1.75	0.48
1:A:122:LEU:CD2	4:A:1079:HOH:O	2.62	0.48
1:B:2047:LEU:HD12	1:B:2047:LEU:N	2.28	0.48
1:B:2057:PRO:HA	1:B:2062:GLU:CG	2.35	0.48
1:B:2515:LEU:HB2	1:B:2518:VAL:CG1	2.43	0.48
1:B:2126:LEU:HD22	1:B:2225:PHE:CE1	2.48	0.48
1:A:332:VAL:HG11	1:A:411:GLU:HG3	1.95	0.48
1:A:191:GLU:CD	1:A:337:ARG:HE	2.16	0.48
1:B:2414:HIS:ND1	1:B:2415:ARG:N	2.60	0.48
1:A:44:LEU:HD13	1:A:61:THR:HG23	1.95	0.48
1:A:162:LEU:HD23	1:A:169:LEU:HD23	1.96	0.48
1:A:153:LEU:CD1	1:A:160:ARG:HD3	2.43	0.48
1:B:2023:ARG:O	1:B:2028:ALA:N	2.46	0.48
1:A:295:LEU:O	1:A:298:TRP:HB2	2.14	0.48
1:B:2553:LEU:HD12	1:B:2553:LEU:H	1.78	0.48
1:B:2333:GLY:O	1:B:2335:THR:N	2.46	0.48
1:A:56:SER:O	1:A:58:ASP:N	2.45	0.48
1:A:560:GLU:HA	1:A:560:GLU:OE2	2.13	0.48
1:A:14:ARG:NE	1:A:59:SER:CB	2.77	0.48
1:B:2470:ALA:HB2	1:B:2574:LEU:HD23	1.95	0.48
1:A:19:TYR:O	1:A:22:TYR:HB3	2.13	0.48
1:A:392:LEU:HD23	1:A:395:ARG:NH1	2.29	0.48
1:B:2121:GLY:HA2	1:B:2174:GLU:OE2	2.13	0.48
1:A:72:THR:O	1:A:147:GLU:HB3	2.13	0.48
1:A:473:TYR:N	1:A:473:TYR:CD1	2.81	0.48
1:A:181:ALA:O	1:A:182:PHE:C	2.52	0.48
1:A:466:VAL:HG12	1:A:467:ARG:N	2.28	0.48
1:A:246:TRP:CZ2	1:A:250:LYS:HE3	2.49	0.48
1:B:2088:ALA:HA	1:B:2093:GLU:OE2	2.14	0.48
1:A:357:VAL:CG2	1:A:387:GLU:HA	2.44	0.48

Continued on next page...

Continued from previous page...

Atom-1	Atom-2	Interatomic distance (Å)	Clash overlap (Å)
1:B:2195:LYS:HE3	1:B:2364:TYR:CE1	2.49	0.48
1:A:281:LEU:N	1:A:281:LEU:HD23	2.29	0.48
1:B:2473:TYR:N	1:B:2473:TYR:CD1	2.82	0.48
1:A:494:LEU:HD23	1:A:494:LEU:C	2.34	0.47
1:A:552:GLU:HG2	1:A:556:ARG:HH22	1.78	0.47
1:A:459:ARG:NH1	1:A:462:GLU:HB3	2.25	0.47
1:B:2007:ARG:HH22	1:B:2130:GLU:CD	2.16	0.47
1:A:191:GLU:OE1	1:A:335:THR:HG21	2.14	0.47
1:B:2424:ARG:HB2	1:B:2424:ARG:HH21	1.79	0.47
1:A:468:ASP:C	1:A:468:ASP:OD2	2.53	0.47
1:A:537:LEU:CD2	1:A:568:ARG:HE	2.10	0.47
1:A:263:GLY:O	1:A:264:ALA:C	2.52	0.47
1:A:545:LEU:C	1:A:547:VAL:H	2.18	0.47
1:B:2484:GLU:O	1:B:2485:ARG:HB2	2.15	0.47
1:A:166:PRO:HG2	1:A:234:GLU:HB3	1.87	0.47
1:A:162:LEU:HD21	1:A:252:PHE:HZ	1.79	0.47
1:B:2515:LEU:HB2	1:B:2518:VAL:HG11	1.96	0.47
1:A:93:GLU:O	1:A:94:VAL:CG2	2.63	0.47
1:B:2349:ILE:O	1:B:2350:GLU:HB2	2.13	0.47
1:B:2427:ASN:ND2	1:B:2429:LEU:H	2.12	0.47
1:A:129:GLU:C	1:A:131:GLY:H	2.18	0.47
1:A:405:TRP:CD1	1:A:423:HIS:HB2	2.49	0.47
1:B:2548:GLU:O	1:B:2549:GLU:HB2	2.14	0.47
1:A:292:LEU:HB2	1:A:310:PHE:O	2.15	0.47
1:B:2398:GLY:C	1:B:2400:GLU:H	2.17	0.47
1:B:2572:ARG:O	1:B:2575:LYS:HB3	2.15	0.47
1:B:2564:ASP:OD2	1:B:2566:ALA:N	2.47	0.47
1:B:2539:ALA:HA	1:B:2543:GLU:OE2	2.14	0.47
1:A:186:ASN:O	1:A:190:GLU:HG3	2.14	0.47
1:A:15:ASP:OD2	1:A:161:ARG:NH1	2.43	0.47
1:B:2019:TYR:O	1:B:2022:TYR:HB3	2.15	0.47
1:A:81:ARG:NH2	1:A:306:ARG:HG2	2.29	0.47
1:A:105:LEU:HD21	1:A:108:LYS:H	1.79	0.47
1:A:71:PRO:HG3	1:A:151:ASN:OD1	2.15	0.47
1:B:2553:LEU:HD12	1:B:2553:LEU:N	2.30	0.47
1:A:435:PHE:CZ	1:A:454:GLU:HG3	2.50	0.47
1:B:2447:MET:HG2	1:B:2512:ALA:CB	2.45	0.46
1:B:2373:GLY:C	1:B:2400:GLU:HG2	2.36	0.46
1:A:222:ARG:HH11	1:A:222:ARG:HG3	1.78	0.46
1:A:166:PRO:HB3	1:A:234:GLU:CD	2.35	0.46
1:B:2098:GLU:OE2	1:B:2263:GLY:HA2	2.15	0.46

Continued on next page...

Continued from previous page...

Atom-1	Atom-2	Interatomic distance (Å)	Clash overlap (Å)
1:A:126:LEU:HD21	1:A:158:ILE:CG2	2.45	0.46
1:B:2246:TRP:CZ2	1:B:2250:LYS:HE3	2.50	0.46
1:B:2323:THR:OG1	1:B:2345:GLU:HB3	2.14	0.46
1:A:129:GLU:O	1:A:131:GLY:N	2.48	0.46
1:A:287:GLY:HA3	1:A:315:LYS:HA	1.97	0.46
1:A:521:VAL:HG13	1:A:522:LEU:N	2.30	0.46
1:B:2376:VAL:HG12	1:B:2391:VAL:CA	2.43	0.46
1:B:2150:GLN:NE2	1:B:2150:GLN:CA	2.79	0.46
1:A:365:ILE:HD13	1:A:403:ILE:HG21	1.98	0.46
1:B:2474:HIS:C	1:B:2476:ARG:H	2.18	0.46
1:B:2151:ASN:OD1	1:B:2208:LEU:O	2.34	0.46
1:A:515:LEU:HB2	1:A:518:VAL:HG12	1.95	0.46
1:B:2002:THR:HG22	1:B:2005:GLU:HG3	1.98	0.46
1:B:2045:LYS:O	1:B:2049:GLU:HB2	2.16	0.46
1:A:102:GLU:O	1:A:104:ALA:N	2.49	0.46
1:A:122:LEU:HD22	4:A:1079:HOH:O	2.14	0.46
1:A:506:LEU:HD13	1:A:527:ALA:HA	1.97	0.46
1:B:2374:ASP:CG	1:B:2391:VAL:HG21	2.36	0.46
1:A:39:ARG:NE	1:A:39:ARG:HA	2.29	0.46
1:A:98:GLU:OE2	1:A:109:ARG:O	2.34	0.46
1:B:2072:THR:OG1	1:B:2072:THR:O	2.31	0.46
1:A:295:LEU:HA	1:A:298:TRP:CD1	2.51	0.46
1:A:166:PRO:CB	1:A:234:GLU:HB3	2.44	0.46
1:B:2073:PHE:CE2	1:B:2209:ARG:HA	2.51	0.46
1:B:2170:GLU:HB3	1:B:2230:LEU:H	1.80	0.46
1:B:2157:THR:O	1:B:2253:PRO:HD3	2.16	0.46
1:B:2063:GLN:O	1:B:2064:VAL:C	2.54	0.46
1:A:431:PRO:HG3	1:A:434:ARG:HH11	1.81	0.46
1:A:323:THR:OG1	1:A:345:GLU:HB3	2.16	0.46
1:A:121:GLY:O	1:A:201:ARG:HG3	2.16	0.45
1:B:2115:VAL:HG21	1:B:2267:VAL:HG12	1.98	0.45
1:B:2244:LEU:O	1:B:2247:LEU:HB2	2.16	0.45
1:B:2015:ASP:OD1	1:B:2160:ARG:HD2	2.15	0.45
1:A:475:LEU:O	1:A:477:LYS:N	2.49	0.45
1:A:116:GLU:HB3	1:A:258:TYR:HB3	1.97	0.45
1:A:56:SER:C	1:A:58:ASP:N	2.69	0.45
1:A:535:ARG:HG3	1:A:535:ARG:NH2	2.32	0.45
1:A:185:LEU:HD11	1:A:189:LEU:HD11	1.98	0.45
1:A:195:LYS:HD2	1:A:367:GLU:CG	2.46	0.45
1:B:2116:GLU:OE2	1:B:2256:HIS:NE2	2.42	0.45
1:B:2546:GLU:HB2	4:B:1226:HOH:O	2.15	0.45

Continued on next page...

Continued from previous page...

Atom-1	Atom-2	Interatomic distance (Å)	Clash overlap (Å)
1:A:90:THR:OG1	1:A:92:GLU:HG2	2.16	0.45
1:A:151:ASN:HB3	1:A:208:LEU:HD12	1.99	0.45
1:A:86:ASP:O	1:A:312:LEU:HD12	2.17	0.45
1:B:2496:ARG:HH11	1:B:2496:ARG:CG	2.30	0.45
1:B:2303:TYR:CD2	1:B:2308:PRO:HB3	2.52	0.45
1:A:14:ARG:O	1:A:18:ARG:HG3	2.16	0.45
1:B:2125:ASN:ND2	1:B:2172:ARG:CD	2.80	0.45
1:B:2496:ARG:HD2	1:B:2496:ARG:O	2.17	0.45
1:B:2239:SER:O	1:B:2243:LEU:N	2.47	0.45
1:B:2540:SER:O	1:B:2541:LEU:C	2.55	0.45
1:B:2476:ARG:O	1:B:2495:LEU:HD11	2.17	0.44
1:A:548:GLU:O	1:A:549:GLU:CB	2.64	0.44
1:B:2128:TYR:HA	1:B:2132:VAL:O	2.17	0.44
1:B:2277:GLN:O	1:B:2278:ARG:C	2.54	0.44
1:B:2142:GLY:C	1:B:2143:GLU:HG3	2.38	0.44
1:B:2138:THR:O	1:B:2145:GLY:HA3	2.16	0.44
1:A:91:TYR:OH	1:A:265:GLU:HG3	2.17	0.44
1:A:518:VAL:O	1:A:518:VAL:CG1	2.65	0.44
1:B:2071:PRO:HG2	1:B:2073:PHE:CE1	2.52	0.44
1:B:2073:PHE:HE2	1:B:2209:ARG:HA	1.82	0.44
1:A:237:LEU:HD13	1:A:243:LEU:HD12	1.98	0.44
1:A:436:GLU:HA	1:A:436:GLU:OE2	2.16	0.44
1:B:2095:LEU:CD1	1:B:2109:ARG:HH21	2.31	0.44
1:B:2224:THR:O	1:B:2224:THR:CG2	2.65	0.44
1:B:2332:VAL:HG21	1:B:2411:GLU:HB2	1.98	0.44
1:B:2440:HIS:O	1:B:2440:HIS:CD2	2.71	0.44
1:B:2105:LEU:C	1:B:2105:LEU:HD12	2.37	0.44
1:A:44:LEU:O	1:A:48:GLU:HG3	2.18	0.44
1:B:2171:VAL:HG12	1:B:2225:PHE:CD1	2.52	0.44
1:B:2170:GLU:HB3	1:B:2230:LEU:N	2.32	0.44
1:B:2494:LEU:O	1:B:2497:GLN:HG2	2.17	0.44
1:A:61:THR:HA	1:A:64:VAL:CG1	2.47	0.44
1:A:169:LEU:HA	1:A:230:LEU:O	2.18	0.44
1:A:122:LEU:N	1:A:122:LEU:HD12	2.33	0.44
1:B:2414:HIS:HD1	1:B:2415:ARG:N	2.14	0.44
1:B:2118:LYS:O	1:B:2285:ALA:HA	2.18	0.44
1:B:2105:LEU:CD1	1:B:2108:LYS:HD3	2.48	0.44
1:B:2014:ARG:HD3	1:B:2018:ARG:NH2	2.31	0.44
1:A:545:LEU:CD2	1:A:552:GLU:HA	2.48	0.44
1:B:2552:GLU:O	1:B:2555:ALA:HB3	2.18	0.44
1:B:2233:GLU:HG3	1:B:2234:GLU:H	1.83	0.44

Continued on next page...

Continued from previous page...

Atom-1	Atom-2	Interatomic distance (Å)	Clash overlap (Å)
1:B:2404:ARG:CB	1:B:2404:ARG:HH21	2.31	0.44
1:A:108:LYS:HE3	1:A:111:PHE:CE2	2.53	0.43
1:B:2392:LEU:C	1:B:2394:GLU:N	2.71	0.43
1:B:2469:VAL:HG22	1:B:2570:LEU:HD11	1.99	0.43
1:A:81:ARG:HH21	1:A:306:ARG:HG2	1.82	0.43
1:B:2101:LEU:C	1:B:2103:ARG:H	2.21	0.43
1:A:97:PHE:CG	1:A:312:LEU:HD22	2.53	0.43
1:B:2452:LEU:HG	1:B:2457:ILE:CG1	2.48	0.43
1:A:10:ILE:HD12	1:A:54:PHE:CD1	2.50	0.43
1:A:162:LEU:HD21	1:A:252:PHE:CZ	2.54	0.43
1:A:457:ILE:O	1:A:461:LEU:HB2	2.19	0.43
1:A:415:ARG:HG3	1:A:415:ARG:HH11	1.82	0.43
1:B:2359:LEU:HD22	1:B:2370:ILE:CD1	2.49	0.43
1:B:2080:THR:HG23	1:B:2230:LEU:HD23	1.99	0.43
1:B:2044:LEU:HD22	1:B:2048:GLU:HG3	2.01	0.43
1:B:2259:GLU:CD	1:B:2273:ARG:HH22	2.22	0.43
1:B:2332:VAL:HG23	1:B:2432:ALA:CB	2.48	0.43
1:A:456:LEU:O	1:A:460:LEU:HG	2.19	0.43
1:B:2499:GLU:O	1:B:2499:GLU:HG3	2.16	0.43
1:B:2359:LEU:O	1:B:2360:HIS:C	2.57	0.43
1:B:2095:LEU:HD11	1:B:2109:ARG:HE	1.82	0.43
1:B:2088:ALA:HB1	1:B:2093:GLU:HB2	2.01	0.43
1:B:2478:GLU:HG3	1:B:2495:LEU:CD1	2.38	0.43
1:A:506:LEU:HD22	1:A:506:LEU:O	2.18	0.43
1:B:2157:THR:HB	1:B:2253:PRO:CB	2.48	0.43
1:A:466:VAL:CG1	1:A:467:ARG:N	2.81	0.43
1:A:231:GLY:O	1:A:234:GLU:HB2	2.19	0.43
1:B:2425:CYS:SG	1:B:2427:ASN:HB3	2.59	0.43
1:A:105:LEU:HD22	1:A:108:LYS:H	1.83	0.43
1:B:2102:GLU:HG2	1:B:2105:LEU:CD2	2.48	0.43
1:B:2361:ASN:O	1:B:2364:TYR:N	2.51	0.43
1:A:371:ARG:HD3	1:A:396:ARG:CZ	2.49	0.43
1:A:16:LEU:H	1:A:16:LEU:CD1	2.32	0.43
1:A:496:ARG:O	1:A:500:GLU:HG3	2.19	0.43
1:A:342:GLY:N	1:A:357:VAL:O	2.48	0.43
1:B:2233:GLU:CG	1:B:2234:GLU:H	2.32	0.43
1:A:507:GLU:HG2	1:A:524:ARG:HG3	2.01	0.42
1:A:368:LEU:O	1:A:369:ASP:C	2.56	0.42
1:A:477:LYS:HB2	1:A:480:LEU:CD1	2.49	0.42
1:A:575:LYS:C	1:A:577:ALA:H	2.22	0.42
1:B:2113:TYR:CD2	1:B:2292:LEU:HA	2.52	0.42

Continued on next page...

Continued from previous page...

Atom-1	Atom-2	Interatomic distance (Å)	Clash overlap (Å)
1:A:372:ILE:C	1:A:374:ASP:N	2.72	0.42
1:A:72:THR:C	1:A:74:ARG:H	2.22	0.42
1:A:211:LYS:NZ	1:A:211:LYS:HB2	2.34	0.42
1:B:2089:PHE:CD1	1:B:2089:PHE:N	2.87	0.42
1:B:2478:GLU:OE2	1:B:2478:GLU:N	2.40	0.42
1:B:2518:VAL:CG1	1:B:2518:VAL:O	2.67	0.42
1:B:2017:ILE:HD12	1:B:2044:LEU:HD12	2.01	0.42
1:A:238:LYS:O	1:A:295:LEU:HB2	2.18	0.42
1:B:2087:ASN:HD22	1:B:2315:LYS:HD2	1.84	0.42
1:B:2111:PHE:O	1:B:2262:LEU:HD12	2.19	0.42
1:A:389:LEU:HD12	1:A:390:ARG:HG2	2.00	0.42
1:A:51:PHE:N	1:A:52:PRO:HD3	2.34	0.42
1:B:2533:MET:HG2	1:B:2571:VAL:CG2	2.50	0.42
1:B:2096:ALA:O	1:B:2100:ARG:HD3	2.19	0.42
1:A:515:LEU:O	1:A:518:VAL:HG12	2.19	0.42
1:B:2392:LEU:HB3	1:B:2394:GLU:HG2	2.01	0.42
1:A:150:GLN:O	1:A:153:LEU:HB2	2.20	0.42
1:A:118:LYS:HG2	1:A:289:VAL:CG2	2.46	0.42
1:A:36:GLU:O	1:A:39:ARG:HB2	2.20	0.42
1:A:368:LEU:HD12	1:A:390:ARG:HA	2.02	0.42
1:A:237:LEU:HD13	1:A:243:LEU:HA	2.01	0.42
1:A:362:GLU:CD	1:A:362:GLU:H	2.23	0.42
1:A:545:LEU:C	1:A:547:VAL:N	2.73	0.42
1:A:52:PRO:O	1:A:55:LYS:HG3	2.20	0.42
1:B:2150:GLN:HA	1:B:2150:GLN:NE2	2.34	0.42
1:B:2463:LYS:HD3	1:B:2484:GLU:OE2	2.19	0.42
1:B:2115:VAL:CG2	1:B:2267:VAL:HG12	2.50	0.42
1:B:2282:PRO:HG2	1:B:2283:PHE:CD1	2.55	0.42
1:A:427:ASN:C	1:A:427:ASN:HD22	2.22	0.42
1:B:2095:LEU:CD1	1:B:2109:ARG:HE	2.32	0.42
1:A:389:LEU:C	1:A:389:LEU:HD13	2.40	0.42
1:B:2496:ARG:O	1:B:2500:GLU:HG3	2.19	0.42
1:A:77:ARG:HA	1:A:143:GLU:O	2.20	0.42
1:B:2057:PRO:C	1:B:2062:GLU:HG3	2.41	0.41
1:A:374:ASP:OD2	1:A:400:GLU:HG2	2.19	0.41
1:B:2390:ARG:NH1	1:B:2392:LEU:CD2	2.83	0.41
1:B:2065:GLY:C	1:B:2067:ARG:N	2.72	0.41
1:B:2002:THR:CG2	1:B:2005:GLU:H	2.30	0.41
1:B:2332:VAL:HG21	1:B:2411:GLU:CB	2.50	0.41
1:A:584:LYS:HG2	1:A:584:LYS:OXT	2.20	0.41
1:A:278:ARG:HD2	1:A:316:PHE:CD2	2.55	0.41

Continued on next page...

Continued from previous page...

Atom-1	Atom-2	Interatomic distance (Å)	Clash overlap (Å)
1:B:2239:SER:HB3	1:B:2242:GLU:CB	2.50	0.41
1:A:24:TYR:O	1:A:26:VAL:N	2.53	0.41
1:B:2278:ARG:O	1:B:2280:ALA:N	2.53	0.41
1:A:568:ARG:HD3	1:A:568:ARG:HA	1.75	0.41
1:B:2475:LEU:O	1:B:2476:ARG:C	2.58	0.41
1:A:2:THR:O	1:A:5:GLU:N	2.53	0.41
1:A:274:PHE:C	1:A:276:ALA:N	2.74	0.41
1:A:456:LEU:HG	1:A:460:LEU:HD11	2.03	0.41
1:B:2174:GLU:HG3	1:B:2226:TYR:CE1	2.56	0.41
1:A:274:PHE:O	1:A:276:ALA:N	2.53	0.41
1:B:2345:GLU:O	1:B:2346:PRO:C	2.59	0.41
1:B:2359:LEU:HD22	1:B:2370:ILE:HD13	2.01	0.41
1:B:2330:PHE:HE1	1:B:2405:TRP:CD2	2.38	0.41
1:B:2379:HIS:CG	1:B:2380:LYS:N	2.87	0.41
1:A:161:ARG:HG2	1:A:161:ARG:HH11	1.85	0.41
1:A:441:TYR:CD1	1:A:512:ALA:HB1	2.55	0.41
1:B:2487:GLY:C	1:B:2489:LYS:N	2.73	0.41
1:B:2424:ARG:CB	1:B:2424:ARG:NH2	2.84	0.41
1:B:2303:TYR:HA	1:B:2308:PRO:HA	2.03	0.41
1:A:427:ASN:HA	1:A:428:PRO:HD3	1.91	0.41
1:B:2098:GLU:OE1	1:B:2264:ALA:N	2.53	0.41
1:B:2226:TYR:CD2	1:B:2226:TYR:C	2.93	0.41
1:B:2438:ILE:O	1:B:2441:TYR:N	2.51	0.41
1:A:294:ASP:OD1	1:A:297:LEU:HB2	2.20	0.41
1:B:2278:ARG:C	1:B:2280:ALA:H	2.23	0.41
1:B:2360:HIS:CE1	1:B:2387:GLU:OE1	2.74	0.41
1:A:80:THR:CG2	1:A:230:LEU:HD22	2.41	0.41
1:B:2521:VAL:HG13	1:B:2522:LEU:H	1.86	0.41
1:A:374:ASP:OD2	1:A:396:ARG:HG2	2.20	0.41
1:B:2007:ARG:HB2	1:B:2054:PHE:CZ	2.56	0.41
1:B:2506:LEU:HB2	1:B:2583:SER:HA	2.02	0.41
1:B:2221:LEU:HD12	1:B:2221:LEU:HA	1.90	0.41
1:A:221:LEU:H	1:A:221:LEU:CD1	2.34	0.41
1:A:433:LYS:HB3	1:A:433:LYS:NZ	2.36	0.41
1:B:2098:GLU:O	1:B:2102:GLU:HG3	2.21	0.41
1:A:20:HIS:CD2	1:A:32:ILE:HG12	2.55	0.41
1:A:73:PHE:N	1:A:73:PHE:CD2	2.87	0.41
1:A:518:VAL:HA	1:A:522:LEU:HD12	2.02	0.41
1:B:2330:PHE:HE1	1:B:2405:TRP:CE2	2.39	0.41
1:A:358:THR:HG23	1:A:359:LEU:O	2.21	0.41
1:B:2434:ARG:HG2	1:B:2467:ARG:O	2.21	0.41

Continued on next page...

Continued from previous page...

Atom-1	Atom-2	Interatomic distance (Å)	Clash overlap (Å)
1:B:2442:ALA:O	1:B:2443:SER:O	2.38	0.41
1:A:530:PHE:O	1:A:532:THR:N	2.48	0.41
1:A:532:THR:HA	1:A:581:MET:O	2.21	0.41
1:A:497:GLN:C	1:A:499:GLU:N	2.75	0.41
1:A:120:ASP:C	1:A:120:ASP:OD1	2.59	0.41
1:A:166:PRO:HG2	1:A:234:GLU:CB	2.48	0.40
1:B:2122:LEU:HD23	1:B:2122:LEU:HA	1.66	0.40
1:A:195:LYS:NZ	4:A:1096:HOH:O	2.54	0.40
1:B:2265:GLU:HB3	4:B:1209:HOH:O	2.20	0.40
1:B:2501:SER:C	1:B:2503:HIS:N	2.74	0.40
1:B:2012:GLU:O	1:B:2016:LEU:HG	2.20	0.40
1:B:2025:TYR:N	1:B:2025:TYR:CD1	2.90	0.40
1:A:14:ARG:CZ	1:A:59:SER:HB2	2.51	0.40
1:B:2074:ARG:HH12	1:B:2076:VAL:HG22	1.78	0.40
1:B:2102:GLU:CB	1:B:2105:LEU:HD23	2.51	0.40
1:A:339:THR:HG22	1:A:340:PRO:N	2.36	0.40
1:A:72:THR:OG1	1:A:72:THR:O	2.39	0.40
1:B:2506:LEU:HG	1:B:2581:MET:O	2.21	0.40
1:B:2424:ARG:HB3	1:B:2424:ARG:NH2	2.36	0.40
1:B:2424:ARG:O	1:B:2424:ARG:HG3	2.22	0.40
1:B:2049:GLU:HA	1:B:2049:GLU:OE1	2.21	0.40
1:B:2412:CYS:HB3	1:B:2430:CYS:SG	2.61	0.40
1:A:429:LEU:O	1:A:430:CYS:C	2.58	0.40
1:A:109:ARG:O	1:A:111:PHE:N	2.55	0.40
1:A:92:GLU:O	1:A:95:LEU:HB3	2.22	0.40
1:A:452:LEU:HD22	1:A:494:LEU:HD11	2.03	0.40
1:B:2405:TRP:HB2	1:B:2423:HIS:HD1	1.85	0.40
1:A:278:ARG:NH1	1:A:316:PHE:CB	2.80	0.40
1:A:58:ASP:OD2	1:A:74:ARG:NE	2.48	0.40
1:B:2427:ASN:HD22	1:B:2428:PRO:CD	2.34	0.40
1:A:394:GLU:N	1:A:394:GLU:OE2	2.53	0.40
1:A:319:GLU:HG3	1:A:349:ILE:CG2	2.46	0.40
1:B:2027:LEU:O	1:B:2028:ALA:HB3	2.22	0.40
1:A:545:LEU:HD21	1:A:552:GLU:HA	2.02	0.40
1:B:2496:ARG:HD2	1:B:2496:ARG:C	2.42	0.40
1:B:2008:ARG:HG3	1:B:2130:GLU:HG3	2.03	0.40
1:A:7:ARG:NH1	1:A:129:GLU:OE1	2.52	0.40
1:A:275:LEU:HD12	1:A:275:LEU:O	2.21	0.40
1:B:2493:ASN:O	1:B:2496:ARG:HG3	2.21	0.40
1:A:347:VAL:HG13	1:A:348:PHE:N	2.36	0.40
1:B:2166:PRO:HG3	1:B:2234:GLU:HG2	2.02	0.40

There are no symmetry-related clashes.

5.3 Torsion angles [i](#)

5.3.1 Protein backbone [i](#)

In the following table, the Percentiles column shows the percent Ramachandran outliers of the chain as a percentile score with respect to all X-ray entries followed by that with respect to entries of similar resolution.

The Analysed column shows the number of residues for which the backbone conformation was analysed, and the total number of residues.

Mol	Chain	Analysed	Favoured	Allowed	Outliers	Percentiles	
1	A	582/584 (100%)	478 (82%)	71 (12%)	33 (6%)	2	6
1	B	582/584 (100%)	463 (80%)	88 (15%)	31 (5%)	2	8
All	All	1164/1168 (100%)	941 (81%)	159 (14%)	64 (6%)	2	7

All (64) Ramachandran outliers are listed below:

Mol	Chain	Res	Type
1	A	62	GLU
1	A	64	VAL
1	A	94	VAL
1	A	104	ALA
1	A	109	ARG
1	A	234	GLU
1	A	448	ASP
1	B	2064	VAL
1	B	2104	ALA
1	B	2194	GLU
1	B	2328	VAL
1	B	2360	HIS
1	B	2361	ASN
1	B	2362	GLU
1	B	2402	PRO
1	B	2443	SER
1	B	2446	ALA
1	A	25	TYR
1	A	103	ARG
1	A	221	LEU
1	A	263	GLY
1	A	373	GLY

Continued on next page...

Continued from previous page...

Mol	Chain	Res	Type
1	A	452	LEU
1	A	518	VAL
1	A	546	GLU
1	B	2108	LYS
1	B	2279	HIS
1	B	2334	ARG
1	B	2476	ARG
1	B	2488	GLU
1	B	2502	LYS
1	B	2531	GLY
1	A	106	GLY
1	A	275	LEU
1	A	412	CYS
1	A	476	ARG
1	A	514	GLY
1	B	2120	ASP
1	B	2143	GLU
1	B	2233	GLU
1	B	2304	THR
1	B	2346	PRO
1	A	73	PHE
1	A	105	LEU
1	A	477	LYS
1	A	483	LEU
1	A	576	GLU
1	B	2030	PRO
1	B	2364	TYR
1	B	2399	GLU
1	B	2552	GLU
1	A	3	ARG
1	A	130	GLU
1	A	516	PRO
1	B	2123	SER
1	B	2259	GLU
1	A	57	PRO
1	B	2341	VAL
1	B	2384	VAL
1	A	148	VAL
1	A	531	GLY
1	A	71	PRO
1	A	384	VAL
1	B	2236	GLY

5.3.2 Protein sidechains ⓘ

In the following table, the Percentiles column shows the percent sidechain outliers of the chain as a percentile score with respect to all X-ray entries followed by that with respect to entries of similar resolution.

The Analysed column shows the number of residues for which the sidechain conformation was analysed, and the total number of residues.

Mol	Chain	Analysed	Rotameric	Outliers	Percentiles	
1	A	499/499 (100%)	469 (94%)	30 (6%)	24	57
1	B	499/499 (100%)	461 (92%)	38 (8%)	16	43
All	All	998/998 (100%)	930 (93%)	68 (7%)	20	49

All (68) residues with a non-rotameric sidechain are listed below:

Mol	Chain	Res	Type
1	A	39	ARG
1	A	41	LEU
1	A	44	LEU
1	A	49	GLU
1	A	95	LEU
1	A	99	GLU
1	A	105	LEU
1	A	107	ARG
1	A	172	ARG
1	A	222	ARG
1	A	234	GLU
1	A	243	LEU
1	A	295	LEU
1	A	314	TYR
1	A	319	GLU
1	A	334	ARG
1	A	347	VAL
1	A	367	GLU
1	A	368	LEU
1	A	371	ARG
1	A	384	VAL
1	A	388	VAL
1	A	427	ASN
1	A	430	CYS
1	A	433	LYS
1	A	444	ARG
1	A	461	LEU

Continued on next page...

Continued from previous page...

Mol	Chain	Res	Type
1	A	475	LEU
1	A	495	LEU
1	A	506	LEU
1	B	2013	LEU
1	B	2044	LEU
1	B	2049	GLU
1	B	2092	GLU
1	B	2105	LEU
1	B	2117	HIS
1	B	2122	LEU
1	B	2150	GLN
1	B	2153	LEU
1	B	2162	LEU
1	B	2172	ARG
1	B	2214	ARG
1	B	2226	TYR
1	B	2230	LEU
1	B	2233	GLU
1	B	2240	GLN
1	B	2254	VAL
1	B	2255	GLU
1	B	2269	GLU
1	B	2278	ARG
1	B	2314	TYR
1	B	2360	HIS
1	B	2379	HIS
1	B	2389	LEU
1	B	2405	TRP
1	B	2409	CYS
1	B	2424	ARG
1	B	2427	ASN
1	B	2443	SER
1	B	2479	ASP
1	B	2496	ARG
1	B	2498	ILE
1	B	2499	GLU
1	B	2506	LEU
1	B	2507	GLU
1	B	2513	LEU
1	B	2522	LEU
1	B	2533	MET

Some sidechains can be flipped to improve hydrogen bonding and reduce clashes. All (20) such

sidechains are listed below:

Mol	Chain	Res	Type
1	A	63	GLN
1	A	87	ASN
1	A	202	ASN
1	A	240	GLN
1	A	279	HIS
1	A	331	GLN
1	A	379	HIS
1	A	427	ASN
1	A	525	ASN
1	B	2011	ASN
1	B	2087	ASN
1	B	2125	ASN
1	B	2150	GLN
1	B	2151	ASN
1	B	2202	ASN
1	B	2210	GLN
1	B	2277	GLN
1	B	2427	ASN
1	B	2497	GLN
1	B	2503	HIS

5.3.3 RNA [i](#)

There are no RNA molecules in this entry.

5.4 Non-standard residues in protein, DNA, RNA chains [i](#)

There are no non-standard protein/DNA/RNA residues in this entry.

5.5 Carbohydrates [i](#)

There are no carbohydrates in this entry.

5.6 Ligand geometry [i](#)

Of 4 ligands modelled in this entry, 2 are monoatomic - leaving 2 for Mogul analysis.

In the following table, the Counts columns list the number of bonds (or angles) for which Mogul statistics could be retrieved, the number of bonds (or angles) that are observed in the model and the number of bonds (or angles) that are defined in the chemical component dictionary. The Link

column lists molecule types, if any, to which the group is linked. The Z score for a bond length (or angle) is the number of standard deviations the observed value is removed from the expected value. A bond length (or angle) with $|Z| > 2$ is considered an outlier worth inspection. RMSZ is the root-mean-square of all Z scores of the bond lengths (or angles).

Mol	Type	Chain	Res	Link	Bond lengths			Bond angles		
					Counts	RMSZ	# Z > 2	Counts	RMSZ	# Z > 2
3	AMP	A	700	-	15,24,25	1.21	3 (20%)	16,35,38	3.49	4 (25%)
3	AMP	B	2700	-	15,24,25	1.32	2 (13%)	16,35,38	3.57	3 (18%)

In the following table, the Chirals column lists the number of chiral outliers, the number of chiral centers analysed, the number of these observed in the model and the number defined in the chemical component dictionary. Similar counts are reported in the Torsion and Rings columns. '-' means no outliers of that kind were identified.

Mol	Type	Chain	Res	Link	Chirals	Torsions	Rings
3	AMP	A	700	-	-	0/3/25/26	0/3/3/3
3	AMP	B	2700	-	-	0/3/25/26	0/3/3/3

All (5) bond length outliers are listed below:

Mol	Chain	Res	Type	Atoms	Z	Observed(Å)	Ideal(Å)
3	A	700	AMP	C5-N7	-2.57	1.30	1.39
3	B	2700	AMP	C5-N7	-2.54	1.30	1.39
3	A	700	AMP	C2-N3	2.16	1.36	1.32
3	A	700	AMP	O4'-C1'	2.31	1.44	1.41
3	B	2700	AMP	O4'-C1'	2.83	1.44	1.41

All (7) bond angle outliers are listed below:

Mol	Chain	Res	Type	Atoms	Z	Observed(°)	Ideal(°)
3	B	2700	AMP	N3-C2-N1	-13.46	118.58	128.89
3	A	700	AMP	N3-C2-N1	-12.94	118.99	128.89
3	A	700	AMP	C4-C5-N7	-2.55	107.14	109.48
3	B	2700	AMP	C4-C5-N7	-2.42	107.25	109.48
3	A	700	AMP	C2'-C3'-C4'	2.16	107.05	102.61
3	B	2700	AMP	C2'-C3'-C4'	2.20	107.14	102.61
3	A	700	AMP	C4'-O4'-C1'	2.51	112.47	109.72

There are no chirality outliers.

There are no torsion outliers.

There are no ring outliers.

2 monomers are involved in 3 short contacts:

Mol	Chain	Res	Type	Clashes	Symm-Clashes
3	A	700	AMP	2	0
3	B	2700	AMP	1	0

5.7 Other polymers [i](#)

There are no such residues in this entry.

5.8 Polymer linkage issues [i](#)

There are no chain breaks in this entry.

6 Fit of model and data

6.1 Protein, DNA and RNA chains

In the following table, the column labelled ‘#RSRZ> 2’ contains the number (and percentage) of RSRZ outliers, followed by percent RSRZ outliers for the chain as percentile scores relative to all X-ray entries and entries of similar resolution. The OWAB column contains the minimum, median, 95th percentile and maximum values of the occupancy-weighted average B-factor per residue. The column labelled ‘Q< 0.9’ lists the number of (and percentage) of residues with an average occupancy less than 0.9.

Mol	Chain	Analysed	<RSRZ>	#RSRZ>2	OWAB(Å ²)	Q<0.9
1	A	584/584 (100%)	-0.12	15 (2%) 59 54	12, 46, 92, 142	0
1	B	584/584 (100%)	-0.05	17 (2%) 55 49	12, 50, 98, 151	0
All	All	1168/1168 (100%)	-0.09	32 (2%) 58 52	12, 48, 95, 151	0

All (32) RSRZ outliers are listed below:

Mol	Chain	Res	Type	RSRZ
1	A	106	GLY	8.6
1	A	107	ARG	6.6
1	B	2351	GLY	5.7
1	B	2107	ARG	5.3
1	B	2305	ALA	4.6
1	A	487	GLY	4.2
1	A	65	GLY	4.1
1	A	64	VAL	3.5
1	B	2306	ARG	3.2
1	B	2304	THR	3.1
1	A	397	THR	3.0
1	B	2399	GLU	2.9
1	A	108	LYS	2.9
1	A	305	ALA	2.7
1	B	2106	GLY	2.7
1	B	2484	GLU	2.6
1	A	488	GLU	2.6
1	B	2383	GLY	2.5
1	A	584	LYS	2.4
1	B	2234	GLU	2.4
1	B	2110	PRO	2.3
1	B	2444	ARG	2.3
1	B	2121	GLY	2.3
1	B	2108	LYS	2.2

Continued on next page...

Continued from previous page...

Mol	Chain	Res	Type	RSRZ
1	A	66	ALA	2.2
1	A	3	ARG	2.1
1	A	33	SER	2.1
1	A	67	ARG	2.1
1	B	2035	ALA	2.1
1	B	2485	ARG	2.1
1	A	306	ARG	2.1
1	B	2476	ARG	2.0

6.2 Non-standard residues in protein, DNA, RNA chains [i](#)

There are no non-standard protein/DNA/RNA residues in this entry.

6.3 Carbohydrates [i](#)

There are no carbohydrates in this entry.

6.4 Ligands [i](#)

In the following table, the Atoms column lists the number of modelled atoms in the group and the number defined in the chemical component dictionary. LLDF column lists the quality of electron density of the group with respect to its neighbouring residues in protein, DNA or RNA chains. The B-factors column lists the minimum, median, 95th percentile and maximum values of B factors of atoms in the group. The column labelled 'Q< 0.9' lists the number of atoms with occupancy less than 0.9.

Mol	Type	Chain	Res	Atoms	RSCC	RSR	LLDF	B-factors(\AA^2)	Q<0.9
3	AMP	B	2700	22/23	0.91	0.21	-0.03	81,90,93,93	0
3	AMP	A	700	22/23	0.94	0.16	-0.82	49,53,56,57	0
2	ZN	A	701	1/1	1.00	0.10	-1.01	19,19,19,19	0
2	ZN	B	2701	1/1	0.99	0.10	-1.20	29,29,29,29	0

6.5 Other polymers [i](#)

There are no such residues in this entry.