



Full wwPDB X-ray Structure Validation Report ⓘ

Feb 1, 2016 – 05:54 AM GMT

PDB ID : 2VA6
Title : X-RAY CRYSTAL STRUCTURE OF BETA SECRETASE COMPLEXED WITH COMPOUND 24
Authors : Edwards, P.D.; Albert, J.S.; Sylvester, M.; Aharony, D.; Andisik, D.; Callaghan, O.; Campbell, J.B.; Carr, R.A.; Chessari, G.; Congreve, M.; Frederickson, M.; Folmer, R.H.A.; Geschwindner, S.; Koether, G.; Kolmodin, K.; Krumrine, J.; Mauger, R.C.; Murray, C.W.; Olsson, L.L.; Patel, S.; Spear, N.; Tian, G.
Deposited on : 2007-08-30
Resolution : 2.50 Å(reported)

This is a Full wwPDB X-ray Structure Validation Report for a publicly released PDB entry.
We welcome your comments at validation@mail.wwpdb.org
A user guide is available at
<http://wwpdb.org/validation/2016/XrayValidationReportHelp>
with specific help available everywhere you see the ⓘ symbol.

The following versions of software and data (see [references ⓘ](#)) were used in the production of this report:

MolProbity : 4.02b-467
Mogul : 1.7 (RC4), CSD as536be (2015)
Xtriage (Phenix) : 1.9-1692
EDS : rb-20026688
Percentile statistics : 20151230.v01 (using entries in the PDB archive December 30th 2015)
Refmac : 5.8.0135
CCP4 : 6.5.0
Ideal geometry (proteins) : Engh & Huber (2001)
Ideal geometry (DNA, RNA) : Parkinson et al. (1996)
Validation Pipeline (wwPDB-VP) : trunk26865

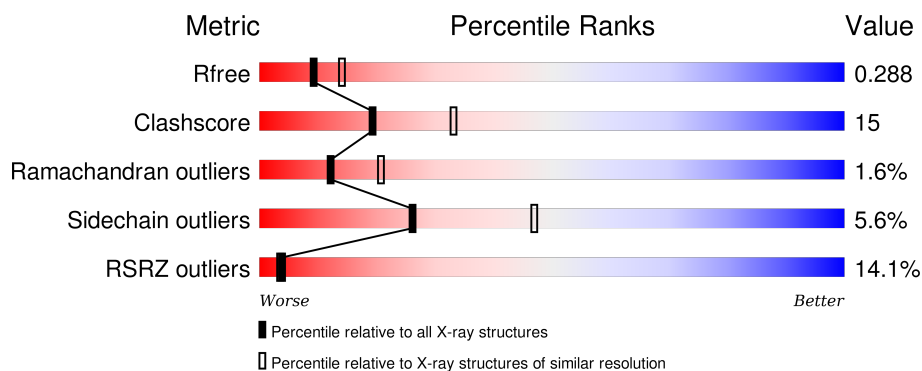
1 Overall quality at a glance

The following experimental techniques were used to determine the structure:

X-RAY DIFFRACTION

The reported resolution of this entry is 2.50 Å.

Percentile scores (ranging between 0-100) for global validation metrics of the entry are shown in the following graphic. The table shows the number of entries on which the scores are based.



Metric	Whole archive (#Entries)	Similar resolution (#Entries, resolution range(Å))
R_{free}	91344	3553 (2.50-2.50)
Clashscore	102246	4242 (2.50-2.50)
Ramachandran outliers	100387	4156 (2.50-2.50)
Sidechain outliers	100360	4158 (2.50-2.50)
RSRZ outliers	91569	3562 (2.50-2.50)

The table below summarises the geometric issues observed across the polymeric chains and their fit to the electron density. The red, orange, yellow and green segments on the lower bar indicate the fraction of residues that contain outliers for ≥ 3 , 2, 1 and 0 types of geometric quality criteria. A grey segment represents the fraction of residues that are not modelled. The numeric value for each fraction is indicated below the corresponding segment, with a dot representing fractions $\leq 5\%$. The upper red bar (where present) indicates the fraction of residues that have poor fit to the electron density. The numeric value is given above the bar.

Mol	Chain	Length	Quality of chain
1	A	455	

The following table lists non-polymeric compounds, carbohydrate monomers and non-standard residues in protein, DNA, RNA chains that are outliers for geometric or electron-density-fit criteria:

Mol	Type	Chain	Res	Chirality	Geometry	Clashes	Electron density
2	IOD	A	1501	-	-	-	X

2 Entry composition [i](#)

There are 4 unique types of molecules in this entry. The entry contains 3076 atoms, of which 0 are hydrogens and 0 are deuteriums.

In the tables below, the ZeroOcc column contains the number of atoms modelled with zero occupancy, the AltConf column contains the number of residues with at least one atom in alternate conformation and the Trace column contains the number of residues modelled with at most 2 atoms.

- Molecule 1 is a protein called BETA SECRETASE 1.

Mol	Chain	Residues	Atoms					ZeroOcc	AltConf	Trace
1	A	377	Total	C	N	O	S	0	0	1
			2961	1895	493	559	14			

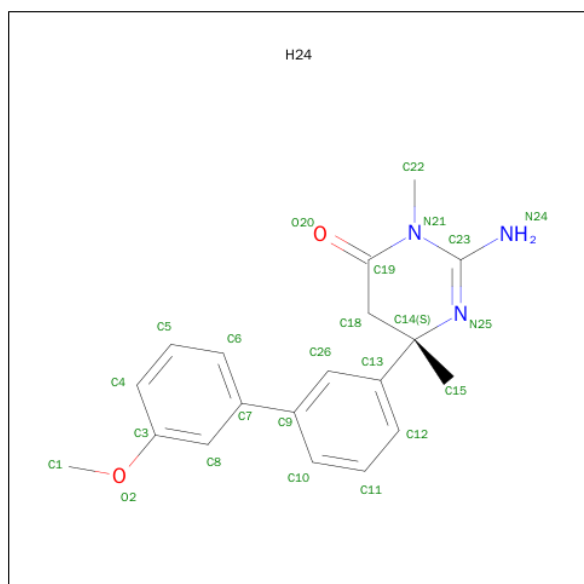
There are 2 discrepancies between the modelled and reference sequences:

Chain	Residue	Modelled	Actual	Comment	Reference
A	-5	LYS	ARG	ENGINEERED MUTATION	UNP P56817
A	-4	LYS	ARG	ENGINEERED MUTATION	UNP P56817

- Molecule 2 is IODIDE ION (three-letter code: IOD) (formula: I).

Mol	Chain	Residues	Atoms		ZeroOcc	AltConf
2	A	3	Total	I	0	0
			3	3		

- Molecule 3 is (6S)-2-AMINO-6-(3'-METHOXYBIPHENYL-3-YL)-3,6-DIMETHYL-5,6-DIHYDROPYRIMIDIN-4(3H)-ONE (three-letter code: H24) (formula: C₁₉H₂₁N₃O₂).



Mol	Chain	Residues	Atoms				ZeroOcc	AltConf
3	A	1	Total	C	N	O	0	0
			24	19	3	2		

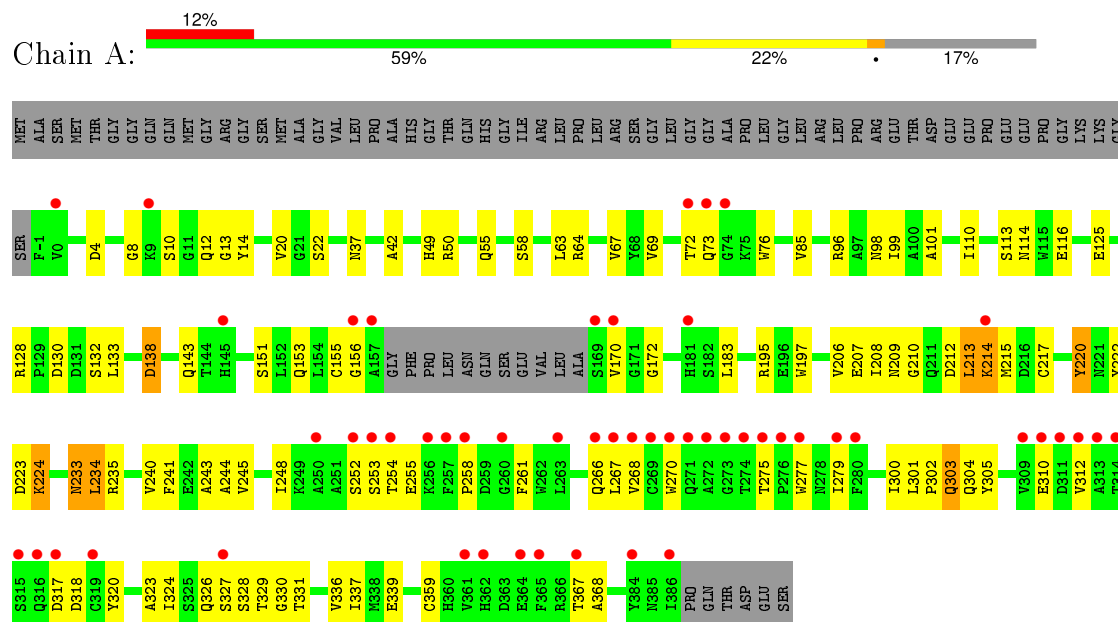
- Molecule 4 is water.

Mol	Chain	Residues	Atoms		ZeroOcc	AltConf
4	A	88	Total	O	0	0
			88	88		

3 Residue-property plots

These plots are drawn for all protein, RNA and DNA chains in the entry. The first graphic for a chain summarises the proportions of errors displayed in the second graphic. The second graphic shows the sequence view annotated by issues in geometry and electron density. Residues are color-coded according to the number of geometric quality criteria for which they contain at least one outlier: green = 0, yellow = 1, orange = 2 and red = 3 or more. A red dot above a residue indicates a poor fit to the electron density ($RSRZ > 2$). Stretches of 2 or more consecutive residues without any outlier are shown as a green connector. Residues present in the sample, but not in the model, are shown in grey.

• Molecule 1: BETA SECRETASE 1



4 Data and refinement statistics

Property	Value	Source
Space group	P 61 2 2	Depositor
Cell constants a, b, c, α , β , γ	102.97Å 102.97Å 167.28Å 90.00° 90.00° 120.00°	Depositor
Resolution (Å)	47.28 – 2.50 47.28 – 2.50	Depositor EDS
% Data completeness (in resolution range)	99.8 (47.28-2.50) 99.8 (47.28-2.50)	Depositor EDS
R_{merge}	0.07	Depositor
R_{sym}	(Not available)	Depositor
$\langle I/\sigma(I) \rangle$ ¹	3.32 (at 2.51Å)	Xtriage
Refinement program	REFMAC 5.2.0019G	Depositor
R, R_{free}	0.224 , 0.289 0.229 , 0.288	Depositor DCC
R_{free} test set	964 reflections (5.41%)	DCC
Wilson B-factor (Å ²)	40.0	Xtriage
Anisotropy	0.097	Xtriage
Bulk solvent k_{sol} (e/Å ³), B_{sol} (Å ²)	0.36 , 53.5	EDS
Estimated twinning fraction	No twinning to report.	Xtriage
L-test for twinning ²	$\langle L \rangle = 0.48$, $\langle L^2 \rangle = 0.31$	Xtriage
Outliers	0 of 18770 reflections	Xtriage
F_o, F_c correlation	0.92	EDS
Total number of atoms	3076	wwPDB-VP
Average B, all atoms (Å ²)	47.0	wwPDB-VP

Xtriage's analysis on translational NCS is as follows: *The largest off-origin peak in the Patterson function is 4.11% of the height of the origin peak. No significant pseudotranslation is detected.*

¹Intensities estimated from amplitudes.

²Theoretical values of $\langle |L| \rangle$, $\langle L^2 \rangle$ for acentric reflections are 0.5, 0.375 respectively for untwinned datasets, and 0.333, 0.2 for perfectly twinned datasets.

5 Model quality [i](#)

5.1 Standard geometry [i](#)

Bond lengths and bond angles in the following residue types are not validated in this section: H24, IOD

The Z score for a bond length (or angle) is the number of standard deviations the observed value is removed from the expected value. A bond length (or angle) with $|Z| > 5$ is considered an outlier worth inspection. RMSZ is the root-mean-square of all Z scores of the bond lengths (or angles).

Mol	Chain	Bond lengths		Bond angles	
		RMSZ	# Z >5	RMSZ	# Z >5
1	A	0.64	0/3036	0.73	0/4127

Chiral center outliers are detected by calculating the chiral volume of a chiral center and verifying if the center is modelled as a planar moiety or with the opposite hand. A planarity outlier is detected by checking planarity of atoms in a peptide group, atoms in a mainchain group or atoms of a sidechain that are expected to be planar.

Mol	Chain	#Chirality outliers	#Planarity outliers
1	A	0	2

There are no bond length outliers.

There are no bond angle outliers.

There are no chirality outliers.

All (2) planarity outliers are listed below:

Mol	Chain	Res	Type	Group
1	A	233	ASN	Peptide
1	A	253	SER	Peptide

5.2 Too-close contacts [i](#)

In the following table, the Non-H and H(model) columns list the number of non-hydrogen atoms and hydrogen atoms in the chain respectively. The H(added) column lists the number of hydrogen atoms added and optimized by MolProbity. The Clashes column lists the number of clashes within the asymmetric unit, whereas Symm-Clashes lists symmetry related clashes.

Mol	Chain	Non-H	H(model)	H(added)	Clashes	Symm-Clashes
1	A	2961	0	2873	89	0

Continued on next page...

Continued from previous page...

Mol	Chain	Non-H	H(model)	H(added)	Clashes	Symm-Clashes
2	A	3	0	0	0	0
3	A	24	0	21	2	0
4	A	88	0	0	1	0
All	All	3076	0	2894	89	0

The all-atom clashscore is defined as the number of clashes found per 1000 atoms (including hydrogen atoms). The all-atom clashscore for this structure is 15.

All (89) close contacts within the same asymmetric unit are listed below, sorted by their clash magnitude.

Atom-1	Atom-2	Interatomic distance (Å)	Clash overlap (Å)
1:A:213:LEU:HD23	1:A:215:MET:HE3	1.42	1.01
1:A:213:LEU:HD23	1:A:215:MET:CE	2.01	0.90
1:A:215:MET:HE1	1:A:243:ALA:CB	2.16	0.75
1:A:156:GLY:CA	1:A:170:VAL:HG13	2.17	0.75
1:A:302:PRO:HA	1:A:305:TYR:CE2	2.24	0.72
1:A:156:GLY:CA	1:A:170:VAL:HG22	2.21	0.70
1:A:213:LEU:CD2	1:A:215:MET:CE	2.70	0.69
1:A:20:VAL:HG22	1:A:85:VAL:HG22	1.76	0.68
1:A:252:SER:HA	1:A:279:ILE:HG22	1.74	0.67
1:A:156:GLY:HA3	1:A:170:VAL:CG1	2.25	0.66
1:A:156:GLY:HA3	1:A:170:VAL:HG13	1.79	0.64
1:A:215:MET:HE1	1:A:243:ALA:HB3	1.81	0.63
1:A:156:GLY:HA2	1:A:170:VAL:HG22	1.82	0.61
1:A:96:ARG:H	1:A:143:GLN:HE22	1.47	0.61
1:A:215:MET:CE	1:A:243:ALA:CB	2.79	0.60
1:A:323:ALA:HB1	1:A:336:VAL:HG21	1.82	0.60
1:A:213:LEU:CD2	1:A:215:MET:HE1	2.32	0.59
1:A:98:ASN:ND2	1:A:133:LEU:HD12	2.17	0.59
1:A:270:TRP:O	1:A:317:ASP:HB3	2.03	0.58
1:A:258:PRO:CB	1:A:266:GLN:NE2	2.67	0.58
1:A:367:THR:HG22	1:A:368:ALA:N	2.19	0.57
1:A:12:GLN:HE22	1:A:113:SER:HA	1.71	0.56
1:A:254:THR:OG1	1:A:279:ILE:HD12	2.06	0.56
1:A:153:GLN:OE1	1:A:183:LEU:HD22	2.05	0.55
1:A:241:PHE:O	1:A:245:VAL:HG23	2.06	0.55
1:A:213:LEU:O	1:A:215:MET:N	2.39	0.54
1:A:241:PHE:HD2	1:A:326:GLN:HE21	1.53	0.54
1:A:110:ILE:HB	1:A:113:SER:HB3	1.88	0.54
1:A:217:CYS:HA	1:A:220:TYR:CD1	2.43	0.53
1:A:208:ILE:HD12	1:A:208:ILE:N	2.23	0.53

Continued on next page...

Continued from previous page...

Atom-1	Atom-2	Interatomic distance (Å)	Clash overlap (Å)
1:A:213:LEU:HD21	1:A:215:MET:HE1	1.90	0.53
1:A:13:GLY:HA2	3:A:1504:H24:C1	2.39	0.53
1:A:268:VAL:HG13	1:A:270:TRP:CZ3	2.44	0.53
1:A:367:THR:HG22	1:A:368:ALA:O	2.10	0.52
1:A:14:TYR:OH	1:A:339:GLU:OE2	2.26	0.51
1:A:312:VAL:HG23	1:A:312:VAL:O	2.10	0.51
1:A:37:ASN:HD21	1:A:128:ARG:H	1.58	0.51
1:A:254:THR:HG22	1:A:255:GLU:CG	2.40	0.51
1:A:300:ILE:HG21	1:A:337:ILE:HD12	1.93	0.51
1:A:301:LEU:HB3	1:A:302:PRO:HD2	1.93	0.50
1:A:156:GLY:CA	1:A:170:VAL:CG2	2.89	0.50
1:A:301:LEU:HD21	1:A:367:THR:O	2.12	0.50
1:A:138:ASP:N	1:A:138:ASP:OD2	2.44	0.50
1:A:37:ASN:ND2	1:A:128:ARG:H	2.10	0.49
1:A:156:GLY:HA3	1:A:170:VAL:CG2	2.43	0.49
1:A:49:HIS:HD2	4:A:2016:HOH:O	1.95	0.49
1:A:8:GLY:O	1:A:170:VAL:HB	2.12	0.49
1:A:241:PHE:CD2	1:A:326:GLN:HG2	2.47	0.49
1:A:234:LEU:O	1:A:324:ILE:HA	2.14	0.48
1:A:275:THR:HG21	1:A:320:TYR:OH	2.14	0.47
1:A:50:ARG:NH2	1:A:116:GLU:OE2	2.48	0.47
1:A:233:ASN:HB2	1:A:235:ARG:HG3	1.97	0.47
1:A:304:GLN:O	1:A:336:VAL:HG13	2.16	0.46
1:A:4:ASP:HA	1:A:172:GLY:O	2.15	0.46
1:A:155:CYS:O	1:A:339:GLU:HG2	2.16	0.45
1:A:233:ASN:HB2	1:A:235:ARG:CG	2.46	0.45
1:A:327:SER:HG	1:A:330:GLY:H	1.63	0.45
1:A:254:THR:HG22	1:A:255:GLU:HG2	1.97	0.45
1:A:241:PHE:CZ	1:A:245:VAL:HG21	2.51	0.45
1:A:50:ARG:HH22	1:A:114:ASN:ND2	2.15	0.44
1:A:327:SER:OG	1:A:330:GLY:N	2.46	0.44
1:A:224:LYS:NZ	1:A:329:THR:O	2.44	0.44
1:A:254:THR:HG22	1:A:255:GLU:HG3	2.00	0.44
1:A:20:VAL:HG11	1:A:99:ILE:CD1	2.48	0.44
1:A:125:GLU:OE2	1:A:195:ARG:NH1	2.51	0.44
1:A:267:LEU:HD12	1:A:267:LEU:C	2.38	0.44
1:A:215:MET:HB2	1:A:215:MET:HE3	1.78	0.44
1:A:13:GLY:HA2	3:A:1504:H24:H1C3	2.00	0.44
1:A:222:TYR:HA	1:A:223:ASP:HA	1.81	0.43
1:A:258:PRO:HB3	1:A:266:GLN:NE2	2.32	0.43
1:A:302:PRO:HA	1:A:305:TYR:CD2	2.52	0.43

Continued on next page...

Continued from previous page...

Atom-1	Atom-2	Interatomic distance (Å)	Clash overlap (Å)
1:A:42:ALA:CB	1:A:101:ALA:HB1	2.49	0.43
1:A:258:PRO:CG	1:A:266:GLN:NE2	2.82	0.43
1:A:156:GLY:CA	1:A:170:VAL:CG1	2.87	0.42
1:A:301:LEU:HB2	1:A:303:GLN:HG2	2.01	0.42
1:A:37:ASN:HD21	1:A:128:ARG:N	2.18	0.42
1:A:240:VAL:O	1:A:244:ALA:HB2	2.20	0.42
1:A:213:LEU:O	1:A:214:LYS:C	2.58	0.42
1:A:235:ARG:O	1:A:331:THR:HA	2.20	0.41
1:A:50:ARG:HH22	1:A:114:ASN:HD21	1.69	0.41
1:A:215:MET:HE1	1:A:243:ALA:HB1	2.01	0.41
1:A:301:LEU:HD21	1:A:367:THR:N	2.36	0.41
1:A:270:TRP:O	1:A:318:ASP:N	2.54	0.40
1:A:69:VAL:HG21	1:A:76:TRP:CZ2	2.57	0.40
1:A:327:SER:HG	1:A:330:GLY:N	2.19	0.40
1:A:130:ASP:OD2	1:A:132:SER:OG	2.35	0.40
1:A:10:SER:HB3	1:A:339:GLU:OE2	2.21	0.40
1:A:63:LEU:O	1:A:64:ARG:C	2.60	0.40
1:A:206:VAL:HG12	1:A:207:GLU:N	2.36	0.40

There are no symmetry-related clashes.

5.3 Torsion angles [i](#)

5.3.1 Protein backbone [i](#)

In the following table, the Percentiles column shows the percent Ramachandran outliers of the chain as a percentile score with respect to all X-ray entries followed by that with respect to entries of similar resolution.

The Analysed column shows the number of residues for which the backbone conformation was analysed, and the total number of residues.

Mol	Chain	Analysed	Favoured	Allowed	Outliers	Percentiles
1	A	373/455 (82%)	339 (91%)	28 (8%)	6 (2%)	12 21

All (6) Ramachandran outliers are listed below:

Mol	Chain	Res	Type
1	A	214	LYS
1	A	73	GLN
1	A	212	ASP

Continued on next page...

Continued from previous page...

Mol	Chain	Res	Type
1	A	310	GLU
1	A	210	GLY
1	A	220	TYR

5.3.2 Protein sidechains ⓘ

In the following table, the Percentiles column shows the percent sidechain outliers of the chain as a percentile score with respect to all X-ray entries followed by that with respect to entries of similar resolution.

The Analysed column shows the number of residues for which the sidechain conformation was analysed, and the total number of residues.

Mol	Chain	Analysed	Rotameric	Outliers	Percentiles	
1	A	321/381 (84%)	303 (94%)	18 (6%)	26	47

All (18) residues with a non-rotameric sidechain are listed below:

Mol	Chain	Res	Type
1	A	22	SER
1	A	55	GLN
1	A	58	SER
1	A	67	VAL
1	A	72	THR
1	A	138	ASP
1	A	151	SER
1	A	197	TRP
1	A	209	ASN
1	A	213	LEU
1	A	224	LYS
1	A	234	LEU
1	A	248	ILE
1	A	261	PHE
1	A	277	TRP
1	A	303	GLN
1	A	328	SER
1	A	359	CYS

Some sidechains can be flipped to improve hydrogen bonding and reduce clashes. All (11) such sidechains are listed below:

Mol	Chain	Res	Type
1	A	12	GLN
1	A	37	ASN
1	A	45	HIS
1	A	49	HIS
1	A	55	GLN
1	A	92	ASN
1	A	114	ASN
1	A	143	GLN
1	A	209	ASN
1	A	266	GLN
1	A	278	ASN

5.3.3 RNA [i](#)

There are no RNA molecules in this entry.

5.4 Non-standard residues in protein, DNA, RNA chains [i](#)

There are no non-standard protein/DNA/RNA residues in this entry.

5.5 Carbohydrates [i](#)

There are no carbohydrates in this entry.

5.6 Ligand geometry [i](#)

Of 4 ligands modelled in this entry, 3 are monoatomic - leaving 1 for Mogul analysis.

In the following table, the Counts columns list the number of bonds (or angles) for which Mogul statistics could be retrieved, the number of bonds (or angles) that are observed in the model and the number of bonds (or angles) that are defined in the chemical component dictionary. The Link column lists molecule types, if any, to which the group is linked. The Z score for a bond length (or angle) is the number of standard deviations the observed value is removed from the expected value. A bond length (or angle) with $|Z| > 2$ is considered an outlier worth inspection. RMSZ is the root-mean-square of all Z scores of the bond lengths (or angles).

Mol	Type	Chain	Res	Link	Bond lengths			Bond angles		
					Counts	RMSZ	$\# Z > 2$	Counts	RMSZ	$\# Z > 2$
3	H24	A	1504	-	22,26,26	0.51	0	27,38,38	1.02	2 (7%)

In the following table, the Chirals column lists the number of chiral outliers, the number of chiral

centers analysed, the number of these observed in the model and the number defined in the chemical component dictionary. Similar counts are reported in the Torsion and Rings columns. '-' means no outliers of that kind were identified.

Mol	Type	Chain	Res	Link	Chirals	Torsions	Rings
3	H24	A	1504	-	-	0/12/30/30	0/3/3/3

There are no bond length outliers.

All (2) bond angle outliers are listed below:

Mol	Chain	Res	Type	Atoms	Z	Observed(°)	Ideal(°)
3	A	1504	H24	C12-C13-C14	-3.10	117.90	120.99
3	A	1504	H24	N21-C23-N25	-3.02	122.66	124.50

There are no chirality outliers.

There are no torsion outliers.

There are no ring outliers.

1 monomer is involved in 2 short contacts:

Mol	Chain	Res	Type	Clashes	Symm-Clashes
3	A	1504	H24	2	0

5.7 Other polymers [i](#)

There are no such residues in this entry.

5.8 Polymer linkage issues [i](#)

There are no chain breaks in this entry.

6 Fit of model and data ⓘ

6.1 Protein, DNA and RNA chains ⓘ

In the following table, the column labelled ‘#RSRZ> 2’ contains the number (and percentage) of RSRZ outliers, followed by percent RSRZ outliers for the chain as percentile scores relative to all X-ray entries and entries of similar resolution. The OWAB column contains the minimum, median, 95th percentile and maximum values of the occupancy-weighted average B-factor per residue. The column labelled ‘Q< 0.9’ lists the number of (and percentage) of residues with an average occupancy less than 0.9.

Mol	Chain	Analysed	<RSRZ>	#RSRZ>2	OWAB(Å ²)	Q<0.9
1	A	377/455 (82%)	0.55	53 (14%) 4 3	19, 40, 95, 115	2 (0%)

All (53) RSRZ outliers are listed below:

Mol	Chain	Res	Type	RSRZ
1	A	313	ALA	11.8
1	A	157	ALA	7.5
1	A	273	GLY	7.1
1	A	274	THR	5.9
1	A	365	PHE	5.8
1	A	170	VAL	5.3
1	A	276	PRO	5.3
1	A	169	SER	5.1
1	A	279	ILE	5.1
1	A	314	THR	5.0
1	A	311	ASP	5.0
1	A	270	TRP	4.9
1	A	277	TRP	4.9
1	A	256	LYS	4.9
1	A	362	HIS	4.8
1	A	275	THR	4.3
1	A	310	GLU	4.1
1	A	72	THR	4.1
1	A	317	ASP	3.9
1	A	315	SER	3.8
1	A	272	ALA	3.8
1	A	364	GLU	3.7
1	A	260	GLY	3.7
1	A	280	PHE	3.6
1	A	269	CYS	3.4
1	A	73	GLN	3.3
1	A	253	SER	3.2

Continued on next page...

Continued from previous page...

Mol	Chain	Res	Type	RSRZ
1	A	271	GLN	3.2
1	A	250	ALA	3.1
1	A	319	CYS	2.9
1	A	254	THR	2.7
1	A	252	SER	2.7
1	A	386	ILE	2.6
1	A	156	GLY	2.6
1	A	367	THR	2.6
1	A	214	LYS	2.5
1	A	263	LEU	2.5
1	A	0	VAL	2.5
1	A	309	VAL	2.5
1	A	74	GLY	2.5
1	A	266	GLN	2.5
1	A	9	LYS	2.4
1	A	181	HIS	2.4
1	A	268	VAL	2.3
1	A	258	PRO	2.3
1	A	384	TYR	2.3
1	A	312	VAL	2.2
1	A	316	GLN	2.2
1	A	145	HIS	2.2
1	A	257	PHE	2.2
1	A	361	VAL	2.1
1	A	267	LEU	2.1
1	A	327	SER	2.1

6.2 Non-standard residues in protein, DNA, RNA chains [i](#)

There are no non-standard protein/DNA/RNA residues in this entry.

6.3 Carbohydrates [i](#)

There are no carbohydrates in this entry.

6.4 Ligands [i](#)

In the following table, the Atoms column lists the number of modelled atoms in the group and the number defined in the chemical component dictionary. LLDF column lists the quality of electron density of the group with respect to its neighbouring residues in protein, DNA or RNA chains. The B-factors column lists the minimum, median, 95th percentile and maximum values of B factors

of atoms in the group. The column labelled 'Q< 0.9' lists the number of atoms with occupancy less than 0.9.

Mol	Type	Chain	Res	Atoms	RSCC	RSR	LLDF	B-factors(\AA^2)	Q<0.9
2	IOD	A	1501	1/1	0.93	0.32	13.41	51,51,51,51	1
2	IOD	A	1503	1/1	0.94	0.25	1.14	56,56,56,56	1
3	H24	A	1504	24/24	0.94	0.22	0.40	30,45,50,52	0
2	IOD	A	1502	1/1	0.99	0.12	-1.59	43,43,43,43	1

6.5 Other polymers [i](#)

There are no such residues in this entry.