



Full wwPDB X-ray Structure Validation Report ⓘ

Feb 1, 2016 – 01:54 PM GMT

PDB ID : 3VC3
Title : Crystal structure of beta-cyanoalanine synthase K95A mutant in soybean
Authors : Yi, H.; Jez, J.M.
Deposited on : 2012-01-03
Resolution : 1.77 Å(reported)

This is a Full wwPDB X-ray Structure Validation Report for a publicly released PDB entry.
We welcome your comments at validation@mail.wwpdb.org
A user guide is available at
<http://wwpdb.org/validation/2016/XrayValidationReportHelp>
with specific help available everywhere you see the ⓘ symbol.

The following versions of software and data (see [references ⓘ](#)) were used in the production of this report:

MolProbity : 4.02b-467
Mogul : 1.7 (RC4), CSD as536be (2015)
Xtriage (Phenix) : 1.9-1692
EDS : rb-20026688
Percentile statistics : 20151230.v01 (using entries in the PDB archive December 30th 2015)
Refmac : 5.8.0135
CCP4 : 6.5.0
Ideal geometry (proteins) : Engh & Huber (2001)
Ideal geometry (DNA, RNA) : Parkinson et al. (1996)
Validation Pipeline (wwPDB-VP) : trunk26865

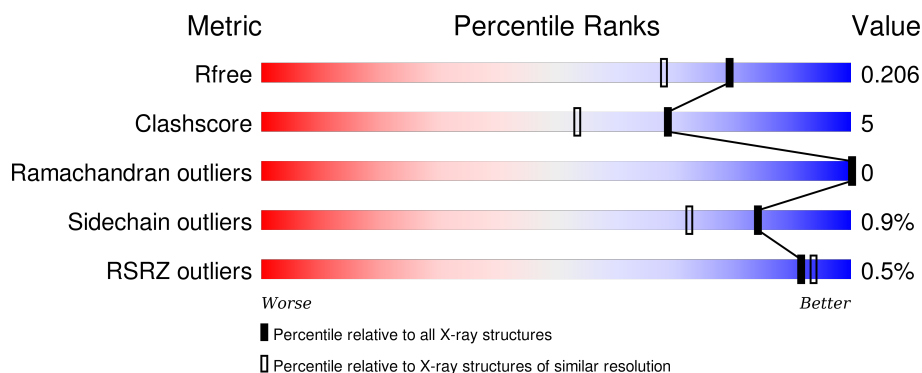
1 Overall quality at a glance ⓘ

The following experimental techniques were used to determine the structure:

X-RAY DIFFRACTION

The reported resolution of this entry is 1.77 Å.

Percentile scores (ranging between 0-100) for global validation metrics of the entry are shown in the following graphic. The table shows the number of entries on which the scores are based.



Metric	Whole archive (#Entries)	Similar resolution (#Entries, resolution range(Å))
R_{free}	91344	1609 (1.76-1.76)
Clashscore	102246	1730 (1.76-1.76)
Ramachandran outliers	100387	1711 (1.76-1.76)
Sidechain outliers	100360	1711 (1.76-1.76)
RSRZ outliers	91569	1610 (1.76-1.76)

The table below summarises the geometric issues observed across the polymeric chains and their fit to the electron density. The red, orange, yellow and green segments on the lower bar indicate the fraction of residues that contain outliers for ≥ 3 , 2, 1 and 0 types of geometric quality criteria. A grey segment represents the fraction of residues that are not modelled. The numeric value for each fraction is indicated below the corresponding segment, with a dot representing fractions $\leq 5\%$. The upper red bar (where present) indicates the fraction of residues that have poor fit to the electron density. The numeric value is given above the bar.

Mol	Chain	Length	Quality of chain
1	A	344	<div> <div>85%</div> <div>9% 6%</div> </div>
1	B	344	<div> <div>85%</div> <div>8% 6%</div> </div>
1	C	344	<div> <div>85%</div> <div>8% 6%</div> </div>
1	D	344	<div> <div>87%</div> <div>6% 6%</div> </div>
1	E	344	<div> <div>88%</div> <div>6% 6%</div> </div>

Continued on next page...

Continued from previous page...

Mol	Chain	Length	Quality of chain
1	F	344	<div><div></div><div>%</div><div>85%</div><div>8%</div><div>6%</div></div>

2 Entry composition [i](#)

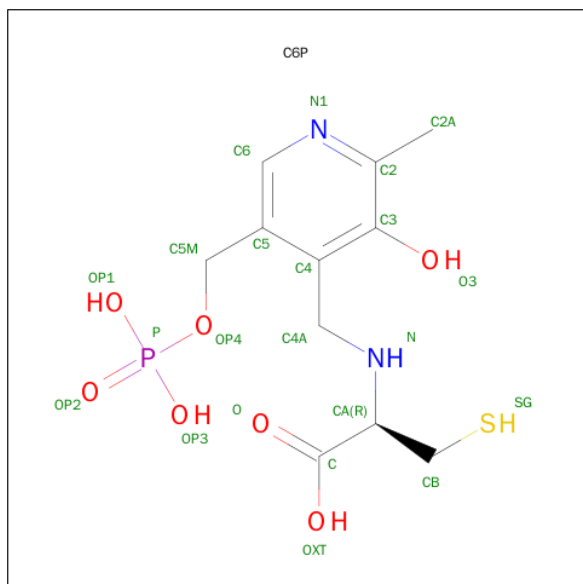
There are 3 unique types of molecules in this entry. The entry contains 16613 atoms, of which 0 are hydrogens and 0 are deuteriums.

In the tables below, the ZeroOcc column contains the number of atoms modelled with zero occupancy, the AltConf column contains the number of residues with at least one atom in alternate conformation and the Trace column contains the number of residues modelled with at most 2 atoms.

- Molecule 1 is a protein called beta-cyanoalnine synthase.

Mol	Chain	Residues	Atoms					ZeroOcc	AltConf	Trace
1	A	322	Total	C	N	O	S	0	3	0
			2437	1538	412	469	18			
1	B	322	Total	C	N	O	S	0	9	0
			2460	1558	413	471	18			
1	C	322	Total	C	N	O	S	0	6	0
			2445	1543	412	472	18			
1	D	323	Total	C	N	O	S	0	2	0
			2437	1536	413	470	18			
1	E	322	Total	C	N	O	S	0	5	0
			2444	1541	413	471	19			
1	F	323	Total	C	N	O	S	0	4	0
			2447	1541	413	475	18			

- Molecule 2 is N-({3-HYDROXY-2-METHYL-5-[(PHOSPHONOOXY)METHYL]PYRIDIN-4-YL}METHYL)-L-CYSTEINE (three-letter code: C6P) (formula: C₁₁H₁₇N₂O₇PS).



Mol	Chain	Residues	Atoms						ZeroOcc	AltConf
2	A	1	Total 22	C 11	N 2	O 7	P 1	S 1	0	0
2	B	1	Total 22	C 11	N 2	O 7	P 1	S 1	0	0
2	C	1	Total 22	C 11	N 2	O 7	P 1	S 1	0	0
2	D	1	Total 22	C 11	N 2	O 7	P 1	S 1	0	0
2	E	1	Total 22	C 11	N 2	O 7	P 1	S 1	0	0
2	F	1	Total 22	C 11	N 2	O 7	P 1	S 1	0	0

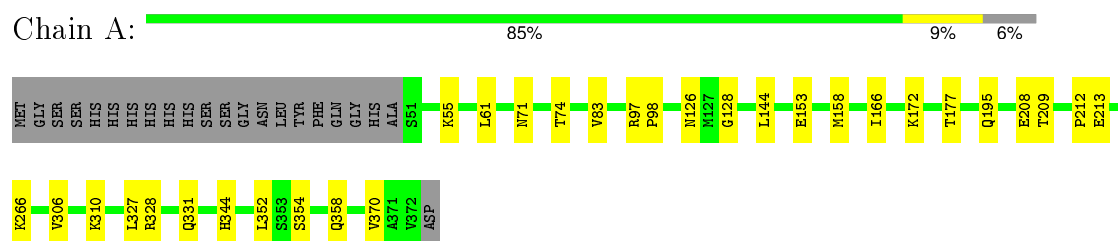
- Molecule 3 is water.

Mol	Chain	Residues	Atoms		ZeroOcc	AltConf
3	A	298	Total 298	O 298	0	0
3	B	339	Total 339	O 339	0	0
3	C	317	Total 317	O 317	0	0
3	D	335	Total 335	O 335	0	0
3	E	293	Total 293	O 293	0	0
3	F	229	Total 229	O 229	0	0

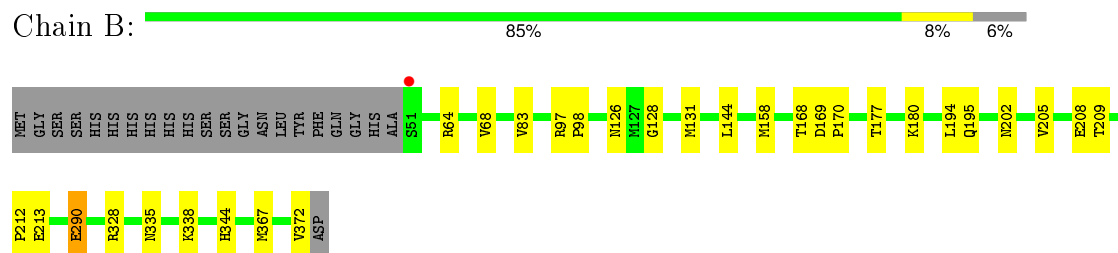
3 Residue-property plots [i](#)

These plots are drawn for all protein, RNA and DNA chains in the entry. The first graphic for a chain summarises the proportions of errors displayed in the second graphic. The second graphic shows the sequence view annotated by issues in geometry and electron density. Residues are color-coded according to the number of geometric quality criteria for which they contain at least one outlier: green = 0, yellow = 1, orange = 2 and red = 3 or more. A red dot above a residue indicates a poor fit to the electron density ($RSRZ > 2$). Stretches of 2 or more consecutive residues without any outlier are shown as a green connector. Residues present in the sample, but not in the model, are shown in grey.

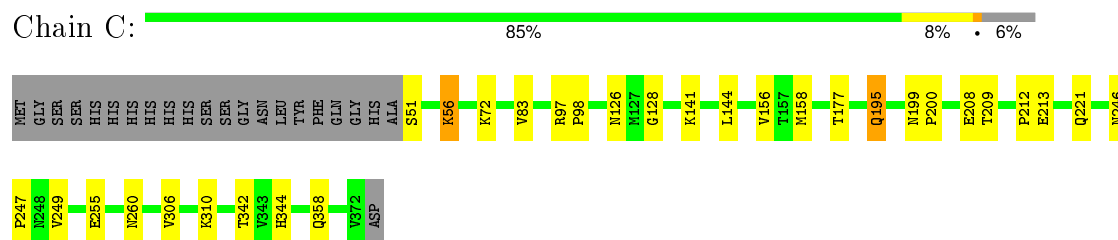
- Molecule 1: beta-cyanoalnine synthase



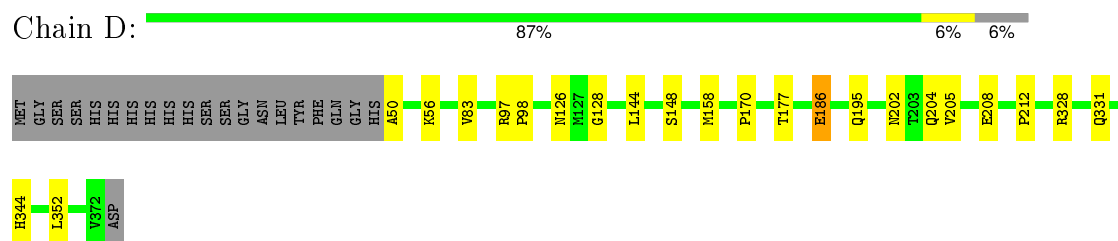
- Molecule 1: beta-cyanoalnine synthase



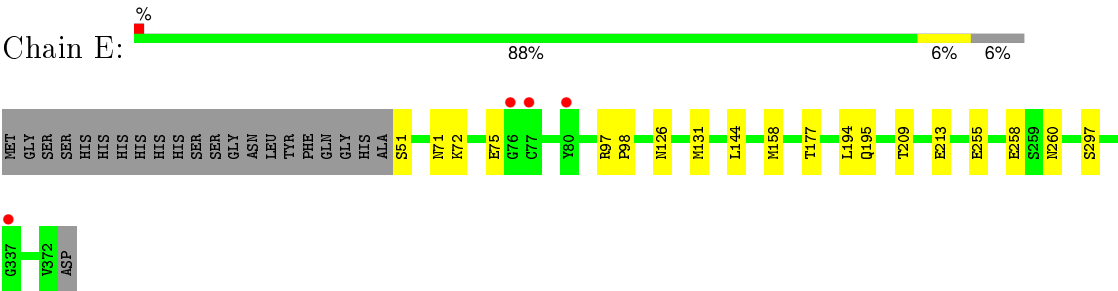
- Molecule 1: beta-cyanoalnine synthase



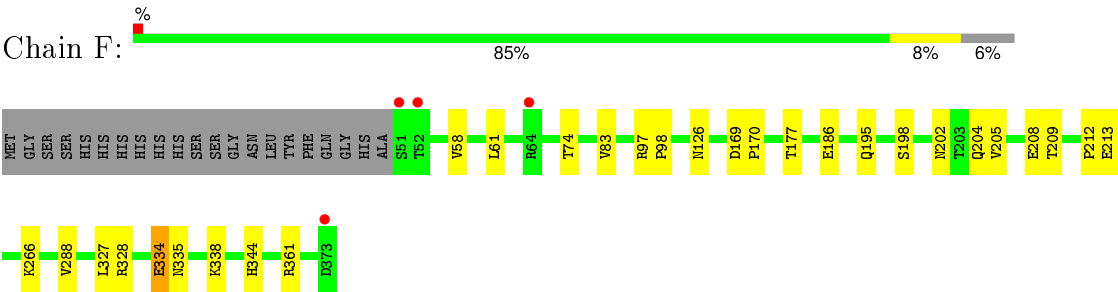
- Molecule 1: beta-cyanoalnine synthase



● Molecule 1: beta-cyanoalnine synthase



● Molecule 1: beta-cyanoalnine synthase



4 Data and refinement statistics

Property	Value	Source
Space group	P 2 21 21	Depositor
Cell constants a, b, c, α , β , γ	71.09 Å 154.32 Å 198.33 Å 90.00° 90.00° 90.00°	Depositor
Resolution (Å)	47.20 – 1.77 47.21 – 1.77	Depositor EDS
% Data completeness (in resolution range)	94.2 (47.20-1.77) 93.7 (47.21-1.77)	Depositor EDS
R_{merge}	0.12	Depositor
R_{sym}	(Not available)	Depositor
$\langle I/\sigma(I) \rangle$ ¹	1.20 (at 1.76 Å)	Xtriage
Refinement program	PHENIX (phenix.refine: 1.7.1_743)	Depositor
R, R_{free}	0.170 , 0.202 0.174 , 0.206	Depositor DCC
R_{free} test set	2000 reflections (1.01%)	DCC
Wilson B-factor (Å ²)	18.2	Xtriage
Anisotropy	0.289	Xtriage
Bulk solvent k_{sol} (e/Å ³), B_{sol} (Å ²)	0.36 , 48.9	EDS
Estimated twinning fraction	No twinning to report.	Xtriage
L-test for twinning ²	$\langle L \rangle = 0.49$, $\langle L^2 \rangle = 0.32$	Xtriage
Outliers	0 of 212421 reflections	Xtriage
F_o, F_c correlation	0.96	EDS
Total number of atoms	16613	wwPDB-VP
Average B, all atoms (Å ²)	21.0	wwPDB-VP

Xtriage's analysis on translational NCS is as follows: *The largest off-origin peak in the Patterson function is 3.00% of the height of the origin peak. No significant pseudotranslation is detected.*

¹Intensities estimated from amplitudes.

²Theoretical values of $\langle |L| \rangle$, $\langle L^2 \rangle$ for acentric reflections are 0.5, 0.375 respectively for untwinned datasets, and 0.333, 0.2 for perfectly twinned datasets.

5 Model quality [i](#)

5.1 Standard geometry [i](#)

Bond lengths and bond angles in the following residue types are not validated in this section: C6P

The Z score for a bond length (or angle) is the number of standard deviations the observed value is removed from the expected value. A bond length (or angle) with $|Z| > 5$ is considered an outlier worth inspection. RMSZ is the root-mean-square of all Z scores of the bond lengths (or angles).

Mol	Chain	Bond lengths		Bond angles	
		RMSZ	# Z >5	RMSZ	# Z >5
1	A	0.36	0/2488	0.54	0/3369
1	B	0.35	0/2529	0.54	0/3425
1	C	0.33	0/2505	0.54	0/3392
1	D	0.35	0/2485	0.52	0/3365
1	E	0.34	0/2501	0.52	0/3386
1	F	0.30	0/2501	0.49	0/3385
All	All	0.34	0/15009	0.52	0/20322

There are no bond length outliers.

There are no bond angle outliers.

There are no chirality outliers.

There are no planarity outliers.

5.2 Too-close contacts [i](#)

In the following table, the Non-H and H(model) columns list the number of non-hydrogen atoms and hydrogen atoms in the chain respectively. The H(added) column lists the number of hydrogen atoms added and optimized by MolProbity. The Clashes column lists the number of clashes within the asymmetric unit, whereas Symm-Clashes lists symmetry related clashes.

Mol	Chain	Non-H	H(model)	H(added)	Clashes	Symm-Clashes
1	A	2437	0	2481	27	0
1	B	2460	0	2529	27	0
1	C	2445	0	2494	27	0
1	D	2437	0	2475	23	0
1	E	2444	0	2488	17	0
1	F	2447	0	2484	26	0
2	A	22	0	13	2	0

Continued on next page...

Continued from previous page...

Mol	Chain	Non-H	H(model)	H(added)	Clashes	Symm-Clashes
2	B	22	0	14	2	0
2	C	22	0	14	2	0
2	D	22	0	14	2	0
2	E	22	0	14	2	0
2	F	22	0	14	2	0
3	A	298	0	0	6	0
3	B	339	0	0	2	0
3	C	317	0	0	2	0
3	D	335	0	0	3	0
3	E	293	0	0	3	0
3	F	229	0	0	2	0
All	All	16613	0	15034	137	0

The all-atom clashscore is defined as the number of clashes found per 1000 atoms (including hydrogen atoms). The all-atom clashscore for this structure is 5.

All (137) close contacts within the same asymmetric unit are listed below, sorted by their clash magnitude.

Atom-1	Atom-2	Interatomic distance (Å)	Clash overlap (Å)
1:A:172:LYS:HE3	1:B:372:VAL:HB	1.53	0.90
1:A:55:LYS:HB2	1:B:68[B]:VAL:HG22	1.59	0.84
1:A:306:VAL:HG13	1:A:310:LYS:HD3	1.60	0.84
1:A:172:LYS:CE	1:B:372:VAL:HB	2.08	0.84
1:D:148:SER:OG	1:D:170:PRO:HG3	1.82	0.79
1:B:64:ARG:HD3	3:B:912:HOH:O	1.87	0.74
1:E:258:GLU:OE2	1:E:297:SER:OG	2.06	0.72
1:C:51:SER:HB3	3:C:875:HOH:O	1.89	0.72
1:F:195:GLN:HG3	1:F:198[A]:SER:OG	1.91	0.71
1:C:247:PRO:HG3	1:E:75:GLU:HG3	1.72	0.71
1:E:209:THR:O	1:E:213:GLU:HG3	1.92	0.70
1:F:204:GLN:O	1:F:208:GLU:HG3	1.93	0.69
1:A:266:LYS:HA	1:A:266:LYS:HE2	1.74	0.69
1:A:328:ARG:HG2	3:A:876:HOH:O	1.95	0.67
1:C:209:THR:O	1:C:213:GLU:HG3	1.93	0.67
1:F:74:THR:HG22	1:F:327:LEU:HD21	1.76	0.66
1:F:195:GLN:CG	1:F:198[A]:SER:OG	2.45	0.65
1:D:204:GLN:O	1:D:208:GLU:HG3	1.96	0.63
1:C:144:LEU:HD13	1:C:158:MET:SD	2.38	0.63
1:B:126:ASN:ND2	2:B:501:C6P:H2A1	2.13	0.63
1:A:354:SER:O	1:A:358:GLN:HG3	1.99	0.63
1:A:144:LEU:HD13	1:A:158:MET:SD	2.38	0.63

Continued on next page...

Continued from previous page...

Atom-1	Atom-2	Interatomic distance (Å)	Clash overlap (Å)
1:C:306:VAL:HG13	1:C:310:LYS:HD3	1.82	0.61
1:B:328:ARG:HG2	3:B:877:HOH:O	1.99	0.61
1:E:71:ASN:ND2	3:E:773:HOH:O	2.34	0.60
3:A:703:HOH:O	1:B:367:MET:SD	2.56	0.59
1:C:126:ASN:ND2	2:C:501:C6P:H2A1	2.16	0.59
1:A:126:ASN:ND2	2:A:501:C6P:H2A1	2.18	0.59
1:E:51:SER:HB3	3:E:784:HOH:O	2.02	0.59
1:B:126:ASN:HD22	2:B:501:C6P:H2A1	1.68	0.58
1:C:83[B]:VAL:HG11	1:C:344:HIS:CG	2.39	0.58
1:C:72:LYS:HD2	1:C:310:LYS:O	2.04	0.58
1:E:126:ASN:ND2	2:E:501:C6P:H2A1	2.19	0.57
1:F:126:ASN:ND2	2:F:501:C6P:H2A1	2.20	0.57
1:F:195:GLN:HG3	1:F:195:GLN:O	2.05	0.56
1:E:144:LEU:HD13	1:E:158:MET:SD	2.44	0.56
1:D:83[B]:VAL:HG11	1:D:344:HIS:CG	2.40	0.56
1:A:83[B]:VAL:HG11	1:A:344:HIS:CD2	2.41	0.56
1:A:61:LEU:HD21	1:B:68[B]:VAL:CG2	2.36	0.56
1:B:195:GLN:OE1	1:B:195:GLN:C	2.45	0.55
1:A:166[A]:ILE:HD13	3:A:838:HOH:O	2.07	0.55
1:F:204:GLN:HG3	3:F:776:HOH:O	2.07	0.55
1:C:126:ASN:HD22	2:C:501:C6P:H2A1	1.70	0.54
1:C:83[B]:VAL:HG11	1:C:344:HIS:CD2	2.43	0.54
1:B:83[B]:VAL:HG11	1:B:344:HIS:CE1	2.42	0.54
1:D:83[B]:VAL:HG11	1:D:344:HIS:CE1	2.42	0.54
1:B:83[B]:VAL:HG11	1:B:344:HIS:CG	2.43	0.54
1:F:335:ASN:HA	1:F:338:LYS:HD2	1.90	0.53
1:E:126:ASN:HD22	2:E:501:C6P:H2A1	1.74	0.53
1:E:195:GLN:C	1:E:195:GLN:OE1	2.47	0.53
1:F:328:ARG:HG2	3:F:663:HOH:O	2.08	0.52
1:B:83[B]:VAL:HG11	1:B:344:HIS:CD2	2.45	0.52
1:D:126:ASN:ND2	2:D:501:C6P:H2A1	2.25	0.52
1:A:83[B]:VAL:HG11	1:A:344:HIS:CG	2.44	0.52
1:F:83[B]:VAL:HG11	1:F:344:HIS:CD2	2.44	0.51
1:F:208:GLU:O	1:F:212:PRO:HG2	2.11	0.51
1:F:195:GLN:HG3	1:F:198[B]:SER:HB2	1.92	0.51
1:A:370:VAL:HG21	1:B:180:LYS:HE3	1.90	0.51
1:B:128:GLY:HA2	1:B:144:LEU:HD22	1.93	0.51
1:D:186:GLU:OE1	1:D:186:GLU:N	2.43	0.51
1:D:208:GLU:O	1:D:212:PRO:HG2	2.11	0.51
1:A:358:GLN:NE2	3:A:853:HOH:O	2.42	0.51
1:B:144:LEU:HD13	1:B:158:MET:SD	2.51	0.50

Continued on next page...

Continued from previous page...

Atom-1	Atom-2	Interatomic distance (Å)	Clash overlap (Å)
1:A:331:GLN:HG3	3:A:890:HOH:O	2.12	0.50
1:B:290:GLU:OE1	1:B:290:GLU:HA	2.11	0.50
1:D:83[B]:VAL:HG11	1:D:344:HIS:CD2	2.47	0.50
1:D:97:ARG:HB2	1:D:98:PRO:CD	2.41	0.50
1:E:97:ARG:HB2	1:E:98:PRO:CD	2.42	0.50
1:F:169:ASP:OD2	1:F:170:PRO:HD2	2.12	0.49
1:D:328:ARG:HG2	3:D:692:HOH:O	2.12	0.49
1:C:195:GLN:C	1:C:195:GLN:OE1	2.51	0.49
1:C:208:GLU:O	1:C:212:PRO:HG2	2.12	0.49
1:A:209:THR:O	1:A:213:GLU:HG3	2.12	0.49
1:C:246:ASN:O	1:C:249[B]:VAL:HG22	2.13	0.48
1:C:97:ARG:HB2	1:C:98:PRO:CD	2.43	0.48
1:A:126:ASN:HD22	2:A:501:C6P:H2A1	1.77	0.48
1:A:74:THR:HG22	1:A:327:LEU:HD21	1.96	0.48
1:B:202:ASN:O	1:B:205:VAL:HG12	2.14	0.48
1:A:306:VAL:CG1	1:A:310:LYS:HD3	2.36	0.47
1:D:128:GLY:HA2	1:D:144:LEU:HD22	1.96	0.47
1:C:195:GLN:OE1	1:C:195:GLN:CA	2.62	0.47
1:C:141:LYS:NZ	3:C:745:HOH:O	2.48	0.47
1:C:83[B]:VAL:HG11	1:C:344:HIS:CE1	2.50	0.47
1:A:128:GLY:HA2	1:A:144:LEU:HD22	1.96	0.47
1:D:56:LYS:HE3	1:F:186:GLU:CG	2.45	0.47
1:A:83[B]:VAL:HG11	1:A:344:HIS:CE1	2.49	0.47
1:C:209:THR:O	1:C:213:GLU:CG	2.62	0.46
1:B:208:GLU:O	1:B:212:PRO:HG2	2.14	0.46
1:E:72:LYS:HE2	3:E:804:HOH:O	2.15	0.46
1:D:97:ARG:HB2	1:D:98:PRO:HD3	1.96	0.46
1:C:97:ARG:HB2	1:C:98:PRO:HD3	1.96	0.46
1:F:97:ARG:HB2	1:F:98:PRO:CD	2.45	0.46
1:C:83[A]:VAL:HG12	1:C:342:THR:CG2	2.46	0.46
1:D:331:GLN:CD	3:D:750:HOH:O	2.54	0.46
1:A:208:GLU:O	1:A:212:PRO:HG2	2.15	0.45
1:B:335:ASN:HA	1:B:338:LYS:HG3	1.98	0.45
1:B:97:ARG:HB2	1:B:98:PRO:CD	2.47	0.45
1:E:97:ARG:HB2	1:E:98:PRO:HD3	1.98	0.45
1:C:56:LYS:HE2	1:C:56:LYS:O	2.16	0.45
1:D:126:ASN:HD22	2:D:501:C6P:H2A1	1.81	0.45
1:C:156:VAL:HG11	1:D:352:LEU:HD22	1.98	0.44
1:C:221:GLN:HE22	1:D:50:ALA:N	2.15	0.44
1:B:168:THR:O	1:B:169:ASP:C	2.54	0.44
1:A:71:ASN:ND2	3:A:656:HOH:O	2.44	0.44

Continued on next page...

Continued from previous page...

Atom-1	Atom-2	Interatomic distance (Å)	Clash overlap (Å)
1:F:195:GLN:HG2	1:F:198[A]:SER:OG	2.15	0.44
1:B:169:ASP:HA	1:B:170:PRO:HD2	1.84	0.44
1:F:195:GLN:CG	1:F:195:GLN:O	2.66	0.43
1:B:195:GLN:OE1	1:B:195:GLN:CA	2.66	0.43
1:C:255:GLU:CD	1:C:260:ASN:HA	2.38	0.43
1:F:334:GLU:HG3	1:F:334:GLU:H	1.43	0.43
1:E:209:THR:O	1:E:213:GLU:CG	2.65	0.43
1:B:209:THR:O	1:B:213:GLU:HG3	2.18	0.43
1:F:209:THR:O	1:F:213:GLU:HG3	2.19	0.43
1:F:126:ASN:HD22	2:F:501:C6P:H2A1	1.84	0.43
1:B:131:MET:CE	1:B:194:LEU:HD12	2.49	0.42
1:D:331:GLN:NE2	3:D:750:HOH:O	2.52	0.42
1:E:131:MET:CE	1:E:194:LEU:HD12	2.50	0.42
1:F:266:LYS:HE2	1:F:266:LYS:HB3	1.83	0.42
1:A:327:LEU:O	1:A:331:GLN:HG2	2.19	0.42
1:D:144:LEU:HD13	1:D:158:MET:SD	2.59	0.42
1:D:83[B]:VAL:HG11	1:D:344:HIS:ND1	2.35	0.42
1:D:195:GLN:OE1	1:D:195:GLN:CA	2.68	0.42
1:E:195:GLN:CA	1:E:195:GLN:OE1	2.67	0.42
1:F:58:VAL:HG13	1:F:61:LEU:HD12	2.01	0.42
1:C:128:GLY:HA2	1:C:144:LEU:HD22	2.02	0.42
1:E:144:LEU:CD1	1:E:158:MET:SD	3.08	0.42
1:D:56:LYS:HE3	1:F:186:GLU:HG3	2.02	0.41
1:C:199:ASN:HA	1:C:200:PRO:HD3	1.94	0.41
1:F:83[B]:VAL:HG11	1:F:344:HIS:CG	2.55	0.41
1:A:153:GLU:OE2	1:A:352:LEU:HB2	2.21	0.41
1:F:97:ARG:HB2	1:F:98:PRO:HD3	2.02	0.41
1:A:97:ARG:HB2	1:A:98:PRO:CD	2.50	0.41
1:F:202:ASN:O	1:F:205:VAL:HG12	2.21	0.41
1:E:255:GLU:CD	1:E:260:ASN:HA	2.42	0.40
1:D:202:ASN:O	1:D:205:VAL:HG12	2.22	0.40
1:C:56:LYS:HD2	1:C:56:LYS:HA	1.82	0.40
1:B:97:ARG:HB2	1:B:98:PRO:HD3	2.03	0.40

There are no symmetry-related clashes.

5.3 Torsion angles

5.3.1 Protein backbone

In the following table, the Percentiles column shows the percent Ramachandran outliers of the chain as a percentile score with respect to all X-ray entries followed by that with respect to entries of similar resolution.

The Analysed column shows the number of residues for which the backbone conformation was analysed, and the total number of residues.

Mol	Chain	Analysed	Favoured	Allowed	Outliers	Percentiles	
1	A	323/344 (94%)	317 (98%)	6 (2%)	0	100	100
1	B	329/344 (96%)	320 (97%)	9 (3%)	0	100	100
1	C	326/344 (95%)	316 (97%)	10 (3%)	0	100	100
1	D	323/344 (94%)	316 (98%)	7 (2%)	0	100	100
1	E	325/344 (94%)	316 (97%)	9 (3%)	0	100	100
1	F	325/344 (94%)	320 (98%)	5 (2%)	0	100	100
All	All	1951/2064 (94%)	1905 (98%)	46 (2%)	0	100	100

There are no Ramachandran outliers to report.

5.3.2 Protein sidechains

In the following table, the Percentiles column shows the percent sidechain outliers of the chain as a percentile score with respect to all X-ray entries followed by that with respect to entries of similar resolution.

The Analysed column shows the number of residues for which the sidechain conformation was analysed, and the total number of residues.

Mol	Chain	Analysed	Rotameric	Outliers	Percentiles	
1	A	269/284 (95%)	267 (99%)	2 (1%)	88	79
1	B	275/284 (97%)	273 (99%)	2 (1%)	88	79
1	C	272/284 (96%)	268 (98%)	4 (2%)	72	55
1	D	268/284 (94%)	266 (99%)	2 (1%)	88	79
1	E	271/284 (95%)	270 (100%)	1 (0%)	93	90
1	F	271/284 (95%)	267 (98%)	4 (2%)	72	55
All	All	1626/1704 (95%)	1611 (99%)	15 (1%)	84	72

All (15) residues with a non-rotameric sidechain are listed below:

Mol	Chain	Res	Type
1	A	177	THR
1	A	195	GLN
1	B	177	THR
1	B	290	GLU
1	C	56	LYS
1	C	177	THR
1	C	195	GLN
1	C	358	GLN
1	D	177	THR
1	D	186	GLU
1	E	177	THR
1	F	177	THR
1	F	288	VAL
1	F	334	GLU
1	F	361	ARG

Some sidechains can be flipped to improve hydrogen bonding and reduce clashes. All (2) such sidechains are listed below:

Mol	Chain	Res	Type
1	C	85	GLN
1	D	85	GLN

5.3.3 RNA ⓘ

There are no RNA molecules in this entry.

5.4 Non-standard residues in protein, DNA, RNA chains ⓘ

There are no non-standard protein/DNA/RNA residues in this entry.

5.5 Carbohydrates ⓘ

There are no carbohydrates in this entry.

5.6 Ligand geometry ⓘ

6 ligands are modelled in this entry.

In the following table, the Counts columns list the number of bonds (or angles) for which Mogul statistics could be retrieved, the number of bonds (or angles) that are observed in the model and the number of bonds (or angles) that are defined in the chemical component dictionary. The Link column lists molecule types, if any, to which the group is linked. The Z score for a bond length (or angle) is the number of standard deviations the observed value is removed from the expected value. A bond length (or angle) with $|Z| > 2$ is considered an outlier worth inspection. RMSZ is the root-mean-square of all Z scores of the bond lengths (or angles).

Mol	Type	Chain	Res	Link	Bond lengths			Bond angles		
					Counts	RMSZ	$\# Z > 2$	Counts	RMSZ	$\# Z > 2$
2	C6P	A	501	-	19,22,22	1.46	5 (26%)	23,31,31	1.91	3 (13%)
2	C6P	B	501	-	19,22,22	1.35	2 (10%)	23,31,31	2.02	4 (17%)
2	C6P	C	501	-	19,22,22	1.29	2 (10%)	23,31,31	1.90	3 (13%)
2	C6P	D	501	-	19,22,22	1.33	2 (10%)	23,31,31	1.78	3 (13%)
2	C6P	E	501	-	19,22,22	1.31	3 (15%)	23,31,31	1.85	3 (13%)
2	C6P	F	501	-	19,22,22	1.30	2 (10%)	23,31,31	1.83	3 (13%)

In the following table, the Chirals column lists the number of chiral outliers, the number of chiral centers analysed, the number of these observed in the model and the number defined in the chemical component dictionary. Similar counts are reported in the Torsion and Rings columns. '-' means no outliers of that kind were identified.

Mol	Type	Chain	Res	Link	Chirals	Torsions	Rings
2	C6P	A	501	-	-	0/13/17/17	0/1/1/1
2	C6P	B	501	-	-	0/13/17/17	0/1/1/1
2	C6P	C	501	-	-	0/13/17/17	0/1/1/1
2	C6P	D	501	-	-	0/13/17/17	0/1/1/1
2	C6P	E	501	-	-	0/13/17/17	0/1/1/1
2	C6P	F	501	-	-	0/13/17/17	0/1/1/1

All (16) bond length outliers are listed below:

Mol	Chain	Res	Type	Atoms	Z	Observed(Å)	Ideal(Å)
2	A	501	C6P	CB-CA	-3.63	1.48	1.53
2	C	501	C6P	CB-CA	-3.39	1.49	1.53
2	D	501	C6P	CB-CA	-3.34	1.49	1.53
2	F	501	C6P	CB-CA	-3.00	1.49	1.53
2	B	501	C6P	CB-CA	-3.00	1.49	1.53
2	E	501	C6P	CB-CA	-2.91	1.49	1.53
2	E	501	C6P	C3-C2	-2.56	1.39	1.40
2	F	501	C6P	C3-C2	-2.50	1.39	1.40
2	B	501	C6P	C3-C2	-2.48	1.39	1.40
2	A	501	C6P	C3-C2	-2.45	1.39	1.40

Continued on next page...

Continued from previous page...

Mol	Chain	Res	Type	Atoms	Z	Observed(Å)	Ideal(Å)
2	D	501	C6P	C3-C2	-2.41	1.39	1.40
2	C	501	C6P	CB-SG	-2.16	1.76	1.81
2	A	501	C6P	CA-N	-2.15	1.43	1.47
2	E	501	C6P	CA-N	-2.08	1.43	1.47
2	A	501	C6P	CB-SG	-2.03	1.76	1.81
2	A	501	C6P	OP4-C5M	-2.01	1.36	1.44

All (19) bond angle outliers are listed below:

Mol	Chain	Res	Type	Atoms	Z	Observed(°)	Ideal(°)
2	A	501	C6P	CB-CA-N	-2.53	107.85	111.40
2	B	501	C6P	CB-CA-N	-2.02	108.56	111.40
2	E	501	C6P	C4A-C4-C5	2.08	121.56	119.71
2	D	501	C6P	C4A-C4-C5	2.24	121.71	119.71
2	C	501	C6P	C4A-C4-C5	2.71	122.13	119.71
2	A	501	C6P	C4A-C4-C5	2.75	122.16	119.71
2	B	501	C6P	CA-CB-SG	3.20	118.09	114.16
2	D	501	C6P	CA-CB-SG	3.21	118.10	114.16
2	F	501	C6P	CA-CB-SG	3.28	118.19	114.16
2	C	501	C6P	CA-CB-SG	3.42	118.36	114.16
2	E	501	C6P	CA-CB-SG	3.78	118.80	114.16
2	B	501	C6P	C4A-C4-C5	3.89	123.18	119.71
2	F	501	C6P	C4A-C4-C5	4.15	123.40	119.71
2	F	501	C6P	OP4-C5M-C5	6.03	118.96	108.99
2	D	501	C6P	OP4-C5M-C5	6.92	120.44	108.99
2	C	501	C6P	OP4-C5M-C5	7.07	120.67	108.99
2	E	501	C6P	OP4-C5M-C5	7.11	120.75	108.99
2	B	501	C6P	OP4-C5M-C5	7.27	121.01	108.99
2	A	501	C6P	OP4-C5M-C5	7.58	121.52	108.99

There are no chirality outliers.

There are no torsion outliers.

There are no ring outliers.

6 monomers are involved in 12 short contacts:

Mol	Chain	Res	Type	Clashes	Symm-Clashes
2	A	501	C6P	2	0
2	B	501	C6P	2	0
2	C	501	C6P	2	0
2	D	501	C6P	2	0
2	E	501	C6P	2	0

Continued on next page...

Continued from previous page...

Mol	Chain	Res	Type	Clashes	Symm-Clashes
2	F	501	C6P	2	0

5.7 Other polymers [i](#)

There are no such residues in this entry.

5.8 Polymer linkage issues [i](#)

There are no chain breaks in this entry.

6 Fit of model and data [i](#)

6.1 Protein, DNA and RNA chains [i](#)

In the following table, the column labelled ‘#RSRZ> 2’ contains the number (and percentage) of RSRZ outliers, followed by percent RSRZ outliers for the chain as percentile scores relative to all X-ray entries and entries of similar resolution. The OWAB column contains the minimum, median, 95th percentile and maximum values of the occupancy-weighted average B-factor per residue. The column labelled ‘Q< 0.9’ lists the number of (and percentage) of residues with an average occupancy less than 0.9.

Mol	Chain	Analysed	<RSRZ>	#RSRZ>2	OWAB(Å ²)	Q<0.9
1	A	322/344 (93%)	-0.10	0 100 100	10, 16, 32, 48	0
1	B	322/344 (93%)	-0.16	1 (0%) 94 95	10, 16, 30, 45	0
1	C	322/344 (93%)	-0.15	0 100 100	11, 17, 32, 54	0
1	D	323/344 (93%)	-0.13	0 100 100	10, 18, 33, 52	0
1	E	322/344 (93%)	0.02	4 (1%) 81 86	10, 18, 35, 51	0
1	F	323/344 (93%)	-0.00	4 (1%) 81 86	13, 23, 38, 59	0
All	All	1934/2064 (93%)	-0.09	9 (0%) 91 93	10, 18, 35, 59	0

All (9) RSRZ outliers are listed below:

Mol	Chain	Res	Type	RSRZ
1	F	51	SER	5.4
1	F	373	ASP	3.6
1	F	64	ARG	3.4
1	F	52	THR	2.7
1	B	51	SER	2.6
1	E	76	GLY	2.6
1	E	80	TYR	2.5
1	E	77[A]	CYS	2.2
1	E	337	GLY	2.2

6.2 Non-standard residues in protein, DNA, RNA chains [i](#)

There are no non-standard protein/DNA/RNA residues in this entry.

6.3 Carbohydrates [i](#)

There are no carbohydrates in this entry.

6.4 Ligands [i](#)

In the following table, the Atoms column lists the number of modelled atoms in the group and the number defined in the chemical component dictionary. LLDF column lists the quality of electron density of the group with respect to its neighbouring residues in protein, DNA or RNA chains. The B-factors column lists the minimum, median, 95th percentile and maximum values of B factors of atoms in the group. The column labelled 'Q< 0.9' lists the number of atoms with occupancy less than 0.9.

Mol	Type	Chain	Res	Atoms	RSCC	RSR	LLDF	B-factors(Å ²)	Q<0.9
2	C6P	B	501	22/22	0.96	0.10	0.96	10,13,19,29	0
2	C6P	F	501	22/22	0.96	0.09	0.40	15,20,25,34	0
2	C6P	E	501	22/22	0.97	0.10	0.28	13,14,20,25	0
2	C6P	A	501	22/22	0.98	0.10	0.26	11,15,22,25	0
2	C6P	D	501	22/22	0.98	0.10	0.23	10,16,20,28	0
2	C6P	C	501	22/22	0.97	0.09	-0.18	12,15,20,24	0

6.5 Other polymers [i](#)

There are no such residues in this entry.