



# Full wwPDB X-ray Structure Validation Report ⓘ

Jan 31, 2016 – 10:52 PM GMT

PDB ID : 1VHW  
Title : Crystal structure of purine nucleoside phosphorylase with adenosine  
Authors : Structural GenomiX  
Deposited on : 2003-12-01  
Resolution : 1.54 Å(reported)

This is a Full wwPDB X-ray Structure Validation Report for a publicly released PDB entry.  
We welcome your comments at [validation@mail.wwpdb.org](mailto:validation@mail.wwpdb.org)  
A user guide is available at  
<http://wwpdb.org/validation/2016/XrayValidationReportHelp>  
with specific help available everywhere you see the ⓘ symbol.

---

The following versions of software and data (see [references ⓘ](#)) were used in the production of this report:

MolProbity : 4.02b-467  
Mogul : 1.7 (RC4), CSD as536be (2015)  
Xtriage (Phenix) : 1.9-1692  
EDS : rb-20026688  
Percentile statistics : 20151230.v01 (using entries in the PDB archive December 30th 2015)  
Refmac : 5.8.0135  
CCP4 : 6.5.0  
Ideal geometry (proteins) : Engh & Huber (2001)  
Ideal geometry (DNA, RNA) : Parkinson et al. (1996)  
Validation Pipeline (wwPDB-VP) : trunk26865

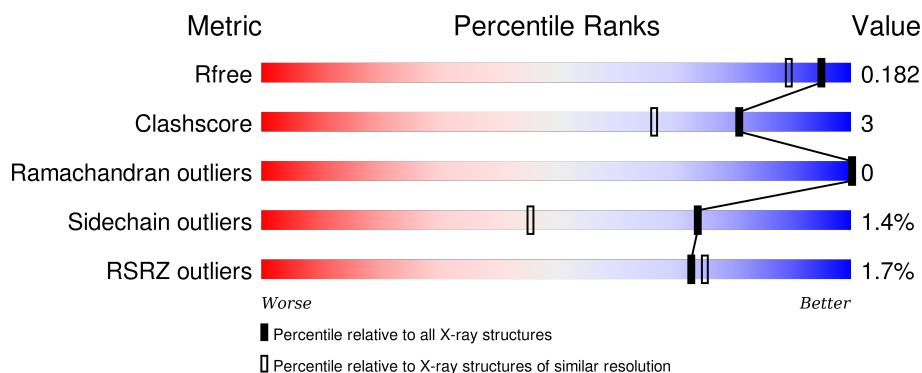
# 1 Overall quality at a glance

The following experimental techniques were used to determine the structure:

## *X-RAY DIFFRACTION*

The reported resolution of this entry is 1.54 Å.

Percentile scores (ranging between 0-100) for global validation metrics of the entry are shown in the following graphic. The table shows the number of entries on which the scores are based.



Metric	Whole archive (#Entries)	Similar resolution (#Entries, resolution range(Å))
$R_{free}$	91344	1555 (1.56-1.52)
Clashscore	102246	1627 (1.56-1.52)
Ramachandran outliers	100387	1594 (1.56-1.52)
Sidechain outliers	100360	1592 (1.56-1.52)
RSRZ outliers	91569	1555 (1.56-1.52)

The table below summarises the geometric issues observed across the polymeric chains and their fit to the electron density. The red, orange, yellow and green segments on the lower bar indicate the fraction of residues that contain outliers for  $\geq 3$ , 2, 1 and 0 types of geometric quality criteria. A grey segment represents the fraction of residues that are not modelled. The numeric value for each fraction is indicated below the corresponding segment, with a dot representing fractions  $\leq 5\%$ . The upper red bar (where present) indicates the fraction of residues that have poor fit to the electron density. The numeric value is given above the bar.

Mol	Chain	Length	Quality of chain
1	A	253	<div> <div style="width: 100%; height: 10px; background-color: red; position: relative;"> <span style="position: absolute; top: -5px; left: 0;">%</span> </div> <div style="width: 88%; height: 10px; background-color: green; position: relative;"> <span style="position: absolute; top: -5px; left: 0;">88%</span> </div> <div style="width: 5%; height: 10px; background-color: yellow; position: relative;"> <span style="position: absolute; top: -5px; left: 0;">5%</span> </div> <div style="width: 6%; height: 10px; background-color: grey; position: relative;"> <span style="position: absolute; top: -5px; left: 0;">6%</span> </div> </div>
1	B	253	<div> <div style="width: 100%; height: 10px; background-color: red; position: relative;"> <span style="position: absolute; top: -5px; left: 0;">2%</span> </div> <div style="width: 87%; height: 10px; background-color: green; position: relative;"> <span style="position: absolute; top: -5px; left: 0;">87%</span> </div> <div style="width: 6%; height: 10px; background-color: yellow; position: relative;"> <span style="position: absolute; top: -5px; left: 0;">6%</span> </div> <div style="width: 6%; height: 10px; background-color: grey; position: relative;"> <span style="position: absolute; top: -5px; left: 0;">6%</span> </div> </div>
1	C	253	<div> <div style="width: 100%; height: 10px; background-color: red; position: relative;"> <span style="position: absolute; top: -5px; left: 0;">2%</span> </div> <div style="width: 85%; height: 10px; background-color: green; position: relative;"> <span style="position: absolute; top: -5px; left: 0;">85%</span> </div> <div style="width: 8%; height: 10px; background-color: yellow; position: relative;"> <span style="position: absolute; top: -5px; left: 0;">8%</span> </div> <div style="width: 6%; height: 10px; background-color: grey; position: relative;"> <span style="position: absolute; top: -5px; left: 0;">6%</span> </div> </div>
1	D	253	<div> <div style="width: 100%; height: 10px; background-color: red; position: relative;"> <span style="position: absolute; top: -5px; left: 0;">3%</span> </div> <div style="width: 87%; height: 10px; background-color: green; position: relative;"> <span style="position: absolute; top: -5px; left: 0;">87%</span> </div> <div style="width: 6%; height: 10px; background-color: yellow; position: relative;"> <span style="position: absolute; top: -5px; left: 0;">6%</span> </div> <div style="width: 6%; height: 10px; background-color: grey; position: relative;"> <span style="position: absolute; top: -5px; left: 0;">6%</span> </div> </div>
1	E	253	<div> <div style="width: 100%; height: 10px; background-color: red; position: relative;"> <span style="position: absolute; top: -5px; left: 0;">%</span> </div> <div style="width: 87%; height: 10px; background-color: green; position: relative;"> <span style="position: absolute; top: -5px; left: 0;">87%</span> </div> <div style="width: 7%; height: 10px; background-color: yellow; position: relative;"> <span style="position: absolute; top: -5px; left: 0;">7%</span> </div> <div style="width: 7%; height: 10px; background-color: grey; position: relative;"> <span style="position: absolute; top: -5px; left: 0;">7%</span> </div> </div>

*Continued on next page...*

Continued from previous page...

Mol	Chain	Length	Quality of chain
1	F	253	<div><div><div>%</div><div><div></div></div><div>87%</div><div>6%</div><div>8%</div></div></div>

## 2 Entry composition

There are 3 unique types of molecules in this entry. The entry contains 12406 atoms, of which 0 are hydrogens and 0 are deuteriums.

In the tables below, the ZeroOcc column contains the number of atoms modelled with zero occupancy, the AltConf column contains the number of residues with at least one atom in alternate conformation and the Trace column contains the number of residues modelled with at most 2 atoms.

- Molecule 1 is a protein called purine nucleoside phosphorylase.

Mol	Chain	Residues	Atoms					ZeroOcc	AltConf	Trace
1	A	237	Total	C	N	O	S	0	4	0
			1776	1124	297	337	18			
1	B	237	Total	C	N	O	S	0	3	0
			1768	1119	297	335	17			
1	C	237	Total	C	N	O	S	0	6	0
			1794	1131	303	342	18			
1	D	237	Total	C	N	O	S	0	6	0
			1799	1137	304	340	18			
1	E	236	Total	C	N	O	S	0	5	0
			1783	1129	299	337	18			
1	F	234	Total	C	N	O	S	0	2	0
			1755	1112	298	328	17			

There are 84 discrepancies between the modelled and reference sequences:

Chain	Residue	Modelled	Actual	Comment	Reference
A	-1	MET	-	cloning artifact	UNP Q9KPM0
A	0	SER	-	cloning artifact	UNP Q9KPM0
A	1	LEU	-	cloning artifact	UNP Q9KPM0
A	57	ARG	LYS	variant	UNP Q9KPM0
A	242	GLU	-	cloning artifact	UNP Q9KPM0
A	243	GLY	-	cloning artifact	UNP Q9KPM0
A	244	GLY	-	cloning artifact	UNP Q9KPM0
A	245	SER	-	cloning artifact	UNP Q9KPM0
A	246	HIS	-	cloning artifact	UNP Q9KPM0
A	247	HIS	-	cloning artifact	UNP Q9KPM0
A	248	HIS	-	cloning artifact	UNP Q9KPM0
A	249	HIS	-	cloning artifact	UNP Q9KPM0
A	250	HIS	-	cloning artifact	UNP Q9KPM0
A	251	HIS	-	cloning artifact	UNP Q9KPM0
B	-1	MET	-	cloning artifact	UNP Q9KPM0
B	0	SER	-	cloning artifact	UNP Q9KPM0
B	1	LEU	-	cloning artifact	UNP Q9KPM0

*Continued on next page...*

*Continued from previous page...*

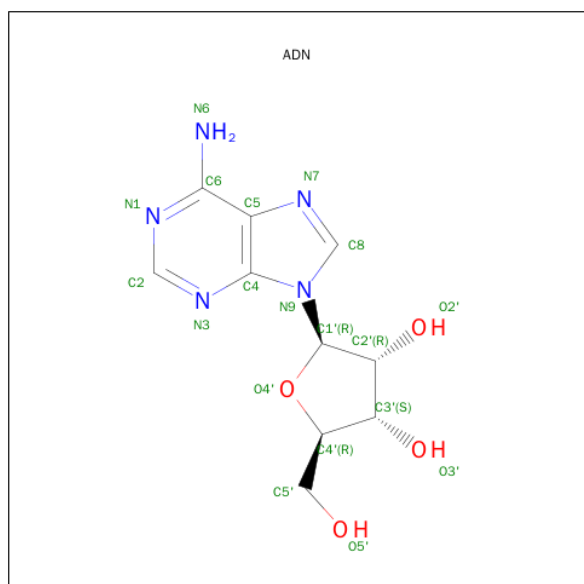
Chain	Residue	Modelled	Actual	Comment	Reference
B	57	ARG	LYS	variant	UNP Q9KPM0
B	242	GLU	-	cloning artifact	UNP Q9KPM0
B	243	GLY	-	cloning artifact	UNP Q9KPM0
B	244	GLY	-	cloning artifact	UNP Q9KPM0
B	245	SER	-	cloning artifact	UNP Q9KPM0
B	246	HIS	-	cloning artifact	UNP Q9KPM0
B	247	HIS	-	cloning artifact	UNP Q9KPM0
B	248	HIS	-	cloning artifact	UNP Q9KPM0
B	249	HIS	-	cloning artifact	UNP Q9KPM0
B	250	HIS	-	cloning artifact	UNP Q9KPM0
B	251	HIS	-	cloning artifact	UNP Q9KPM0
C	-1	MET	-	cloning artifact	UNP Q9KPM0
C	0	SER	-	cloning artifact	UNP Q9KPM0
C	1	LEU	-	cloning artifact	UNP Q9KPM0
C	57	ARG	LYS	variant	UNP Q9KPM0
C	242	GLU	-	cloning artifact	UNP Q9KPM0
C	243	GLY	-	cloning artifact	UNP Q9KPM0
C	244	GLY	-	cloning artifact	UNP Q9KPM0
C	245	SER	-	cloning artifact	UNP Q9KPM0
C	246	HIS	-	cloning artifact	UNP Q9KPM0
C	247	HIS	-	cloning artifact	UNP Q9KPM0
C	248	HIS	-	cloning artifact	UNP Q9KPM0
C	249	HIS	-	cloning artifact	UNP Q9KPM0
C	250	HIS	-	cloning artifact	UNP Q9KPM0
C	251	HIS	-	cloning artifact	UNP Q9KPM0
D	-1	MET	-	cloning artifact	UNP Q9KPM0
D	0	SER	-	cloning artifact	UNP Q9KPM0
D	1	LEU	-	cloning artifact	UNP Q9KPM0
D	57	ARG	LYS	variant	UNP Q9KPM0
D	242	GLU	-	cloning artifact	UNP Q9KPM0
D	243	GLY	-	cloning artifact	UNP Q9KPM0
D	244	GLY	-	cloning artifact	UNP Q9KPM0
D	245	SER	-	cloning artifact	UNP Q9KPM0
D	246	HIS	-	cloning artifact	UNP Q9KPM0
D	247	HIS	-	cloning artifact	UNP Q9KPM0
D	248	HIS	-	cloning artifact	UNP Q9KPM0
D	249	HIS	-	cloning artifact	UNP Q9KPM0
D	250	HIS	-	cloning artifact	UNP Q9KPM0
D	251	HIS	-	cloning artifact	UNP Q9KPM0
E	-1	MET	-	cloning artifact	UNP Q9KPM0
E	0	SER	-	cloning artifact	UNP Q9KPM0
E	1	LEU	-	cloning artifact	UNP Q9KPM0

*Continued on next page...*

Continued from previous page...

Chain	Residue	Modelled	Actual	Comment	Reference
E	57	ARG	LYS	variant	UNP Q9KPM0
E	242	GLU	-	cloning artifact	UNP Q9KPM0
E	243	GLY	-	cloning artifact	UNP Q9KPM0
E	244	GLY	-	cloning artifact	UNP Q9KPM0
E	245	SER	-	cloning artifact	UNP Q9KPM0
E	246	HIS	-	cloning artifact	UNP Q9KPM0
E	247	HIS	-	cloning artifact	UNP Q9KPM0
E	248	HIS	-	cloning artifact	UNP Q9KPM0
E	249	HIS	-	cloning artifact	UNP Q9KPM0
E	250	HIS	-	cloning artifact	UNP Q9KPM0
E	251	HIS	-	cloning artifact	UNP Q9KPM0
F	-1	MET	-	cloning artifact	UNP Q9KPM0
F	0	SER	-	cloning artifact	UNP Q9KPM0
F	1	LEU	-	cloning artifact	UNP Q9KPM0
F	57	ARG	LYS	variant	UNP Q9KPM0
F	242	GLU	-	cloning artifact	UNP Q9KPM0
F	243	GLY	-	cloning artifact	UNP Q9KPM0
F	244	GLY	-	cloning artifact	UNP Q9KPM0
F	245	SER	-	cloning artifact	UNP Q9KPM0
F	246	HIS	-	cloning artifact	UNP Q9KPM0
F	247	HIS	-	cloning artifact	UNP Q9KPM0
F	248	HIS	-	cloning artifact	UNP Q9KPM0
F	249	HIS	-	cloning artifact	UNP Q9KPM0
F	250	HIS	-	cloning artifact	UNP Q9KPM0
F	251	HIS	-	cloning artifact	UNP Q9KPM0

- Molecule 2 is ADENOSINE (three-letter code: ADN) (formula:  $C_{10}H_{13}N_5O_4$ ).



Mol	Chain	Residues	Atoms				ZeroOcc	AltConf
2	A	1	Total	C	N	O	0	0
			19	10	5	4		
2	B	1	Total	C	N	O	0	0
			19	10	5	4		
2	C	1	Total	C	N	O	0	0
			19	10	5	4		
2	D	1	Total	C	N	O	0	0
			19	10	5	4		
2	E	1	Total	C	N	O	0	0
			19	10	5	4		
2	F	1	Total	C	N	O	0	0
			19	10	5	4		

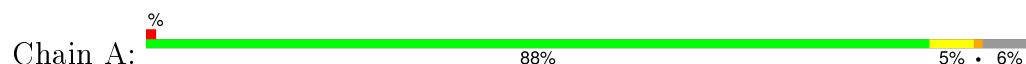
- Molecule 3 is water.

Mol	Chain	Residues	Atoms		ZeroOcc	AltConf
3	A	301	Total	O	0	0
			301	301		
3	B	220	Total	O	0	0
			220	220		
3	C	292	Total	O	0	0
			292	292		
3	D	290	Total	O	0	0
			290	290		
3	E	294	Total	O	0	0
			294	294		
3	F	220	Total	O	0	0
			220	220		

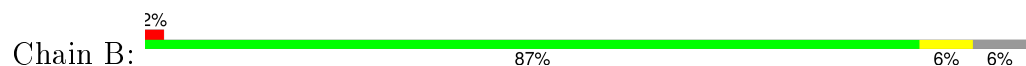
### 3 Residue-property plots [i](#)

These plots are drawn for all protein, RNA and DNA chains in the entry. The first graphic for a chain summarises the proportions of errors displayed in the second graphic. The second graphic shows the sequence view annotated by issues in geometry and electron density. Residues are color-coded according to the number of geometric quality criteria for which they contain at least one outlier: green = 0, yellow = 1, orange = 2 and red = 3 or more. A red dot above a residue indicates a poor fit to the electron density ( $RSRZ > 2$ ). Stretches of 2 or more consecutive residues without any outlier are shown as a green connector. Residues present in the sample, but not in the model, are shown in grey.

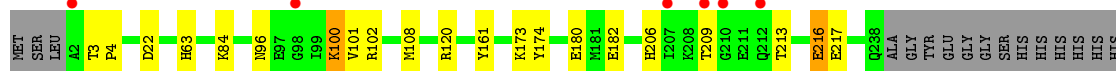
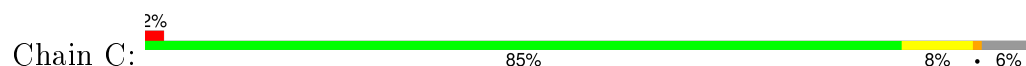
- Molecule 1: purine nucleoside phosphorylase



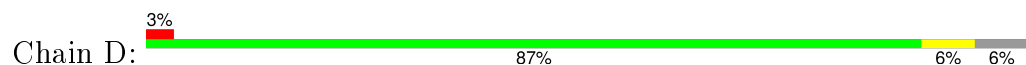
- Molecule 1: purine nucleoside phosphorylase



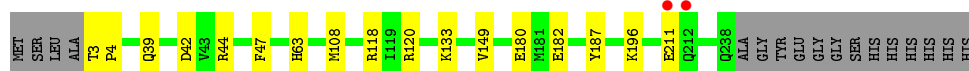
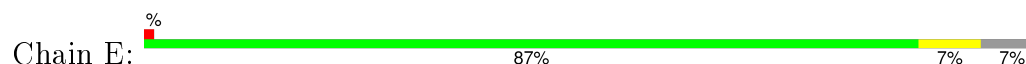
- Molecule 1: purine nucleoside phosphorylase



- Molecule 1: purine nucleoside phosphorylase

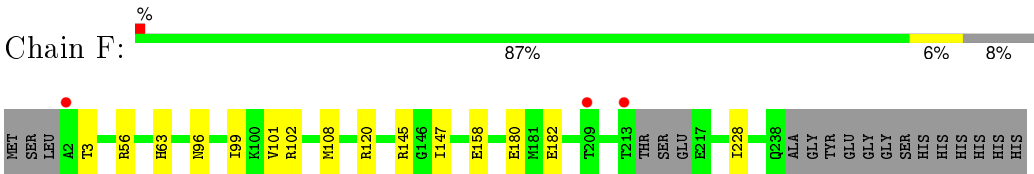


- Molecule 1: purine nucleoside phosphorylase



- Molecule 1: purine nucleoside phosphorylase





## 4 Data and refinement statistics

Property	Value	Source
Space group	P 1 21 1	Depositor
Cell constants a, b, c, $\alpha$ , $\beta$ , $\gamma$	46.60Å 152.72Å 96.72Å 90.00° 103.91° 90.00°	Depositor
Resolution (Å)	33.52 – 1.54 33.56 – 1.54	Depositor EDS
% Data completeness (in resolution range)	(Not available) (33.52-1.54) 94.0 (33.56-1.54)	Depositor EDS
$R_{merge}$	0.05	Depositor
$R_{sym}$	(Not available)	Depositor
$\langle I/\sigma(I) \rangle$ <sup>1</sup>	2.52 (at 1.54Å)	Xtriage
Refinement program	REFMAC 4	Depositor
R, $R_{free}$	0.162 , 0.193 0.155 , 0.182	Depositor DCC
$R_{free}$ test set	9090 reflections (5.28%)	DCC
Wilson B-factor (Å <sup>2</sup> )	11.4	Xtriage
Anisotropy	0.479	Xtriage
Bulk solvent $k_{sol}$ (e/Å <sup>3</sup> ), $B_{sol}$ (Å <sup>2</sup> )	0.36 , 45.7	EDS
Estimated twinning fraction	0.477 for h,-k,-h-l	Xtriage
L-test for twinning <sup>2</sup>	$\langle  L  \rangle = 0.50$ , $\langle L^2 \rangle = 0.33$	Xtriage
Outliers	0 of 181396 reflections	Xtriage
$F_o, F_c$ correlation	0.97	EDS
Total number of atoms	12406	wwPDB-VP
Average B, all atoms (Å <sup>2</sup> )	16.0	wwPDB-VP

Xtriage's analysis on translational NCS is as follows: *The largest off-origin peak in the Patterson function is 4.31% of the height of the origin peak. No significant pseudotranslation is detected.*

<sup>1</sup>Intensities estimated from amplitudes.

<sup>2</sup>Theoretical values of  $\langle |L| \rangle$ ,  $\langle L^2 \rangle$  for acentric reflections are 0.5, 0.375 respectively for untwinned datasets, and 0.333, 0.2 for perfectly twinned datasets.

## 5 Model quality ⓘ

### 5.1 Standard geometry ⓘ

Bond lengths and bond angles in the following residue types are not validated in this section: ADN

The Z score for a bond length (or angle) is the number of standard deviations the observed value is removed from the expected value. A bond length (or angle) with  $|Z| > 5$  is considered an outlier worth inspection. RMSZ is the root-mean-square of all Z scores of the bond lengths (or angles).

Mol	Chain	Bond lengths		Bond angles	
		RMSZ	$\# Z  > 5$	RMSZ	$\# Z  > 5$
1	A	0.50	0/1822	1.00	8/2461 (0.3%)
1	B	0.47	0/1808	0.89	1/2442 (0.0%)
1	C	0.49	0/1848	0.96	3/2494 (0.1%)
1	D	0.49	0/1851	0.97	2/2497 (0.1%)
1	E	0.50	0/1831	0.99	5/2472 (0.2%)
1	F	0.47	0/1790	0.88	1/2413 (0.0%)
All	All	0.49	0/10950	0.95	20/14779 (0.1%)

There are no bond length outliers.

All (20) bond angle outliers are listed below:

Mol	Chain	Res	Type	Atoms	Z	Observed(°)	Ideal(°)
1	E	120	ARG	NE-CZ-NH2	7.07	123.83	120.30
1	A	120	ARG	NE-CZ-NH2	6.42	123.51	120.30
1	C	161	TYR	CB-CG-CD2	-6.37	117.18	121.00
1	C	120	ARG	NE-CZ-NH2	6.18	123.39	120.30
1	E	120	ARG	NE-CZ-NH1	-6.13	117.24	120.30
1	A	193	TYR	CB-CG-CD2	6.11	124.67	121.00
1	A	187	TYR	CB-CG-CD1	-5.98	117.41	121.00
1	A	193	TYR	CB-CG-CD1	-5.82	117.51	121.00
1	A	187	TYR	CB-CG-CD2	5.70	124.42	121.00
1	E	118	ARG	NE-CZ-NH2	-5.58	117.51	120.30
1	F	120	ARG	NE-CZ-NH2	5.48	123.04	120.30
1	E	47	PHE	CB-CG-CD1	-5.44	116.99	120.80
1	E	187	TYR	CB-CG-CD1	-5.37	117.78	121.00
1	A	44	ARG	NE-CZ-NH1	5.34	122.97	120.30
1	D	57	ARG	NE-CZ-NH1	-5.31	117.65	120.30
1	A	145	ARG	NE-CZ-NH2	5.27	122.94	120.30
1	D	120	ARG	NE-CZ-NH2	5.21	122.91	120.30
1	C	161	TYR	CB-CG-CD1	5.20	124.12	121.00

*Continued on next page...*

*Continued from previous page...*

Mol	Chain	Res	Type	Atoms	Z	Observed(°)	Ideal(°)
1	B	161	TYR	CB-CG-CD2	-5.10	117.94	121.00
1	A	47	PHE	CB-CG-CD1	-5.07	117.25	120.80

There are no chirality outliers.

There are no planarity outliers.

## 5.2 Too-close contacts ⓘ

In the following table, the Non-H and H(model) columns list the number of non-hydrogen atoms and hydrogen atoms in the chain respectively. The H(added) column lists the number of hydrogen atoms added and optimized by MolProbity. The Clashes column lists the number of clashes within the asymmetric unit, whereas Symm-Clashes lists symmetry related clashes.

Mol	Chain	Non-H	H(model)	H(added)	Clashes	Symm-Clashes
1	A	1776	0	1735	14	0
1	B	1768	0	1729	17	0
1	C	1794	0	1761	19	0
1	D	1799	0	1781	13	0
1	E	1783	0	1763	13	0
1	F	1755	0	1734	14	0
2	A	19	0	13	0	0
2	B	19	0	13	0	0
2	C	19	0	13	0	0
2	D	19	0	13	0	0
2	E	19	0	13	0	0
2	F	19	0	13	0	0
3	A	301	0	0	4	0
3	B	220	0	0	3	0
3	C	292	0	0	3	0
3	D	290	0	0	2	0
3	E	294	0	0	3	0
3	F	220	0	0	1	0
All	All	12406	0	10581	70	0

The all-atom clashscore is defined as the number of clashes found per 1000 atoms (including hydrogen atoms). The all-atom clashscore for this structure is 3.

All (70) close contacts within the same asymmetric unit are listed below, sorted by their clash magnitude.

Atom-1	Atom-2	Interatomic distance (Å)	Clash overlap (Å)
1:A:108[A]:MET:SD	1:E:108[A]:MET:SD	2.67	0.93
1:B:108[A]:MET:SD	1:D:108[A]:MET:SD	2.67	0.92
1:C:108[A]:MET:SD	1:F:108[A]:MET:SD	2.69	0.90
1:C:100:LYS:HZ2	1:C:101:VAL:H	1.33	0.77
1:B:96:ASN:HB2	3:B:468:HOH:O	1.92	0.69
1:D:96:ASN:HB2	3:D:537:HOH:O	1.96	0.65
1:C:96:ASN:HB2	3:C:364:HOH:O	1.96	0.65
1:B:108[A]:MET:CG	1:D:108[A]:MET:SD	2.87	0.62
1:C:108[A]:MET:SD	1:F:108[A]:MET:CG	2.89	0.61
1:B:108[A]:MET:SD	1:D:108[A]:MET:CG	2.90	0.60
1:A:108[A]:MET:SD	1:E:108[A]:MET:CG	2.91	0.59
1:B:104:VAL:CG2	1:B:147:ILE:HD11	2.33	0.58
1:C:108[A]:MET:CG	1:F:108[A]:MET:SD	2.92	0.58
1:A:108[A]:MET:CG	1:E:108[A]:MET:SD	2.92	0.56
1:D:204:SER:HB3	3:D:384:HOH:O	2.03	0.56
1:C:108[A]:MET:SD	1:F:108[A]:MET:HG3	2.46	0.56
1:B:108[A]:MET:HG3	1:D:108[A]:MET:SD	2.46	0.55
1:B:172:ASP:HA	3:B:468:HOH:O	2.05	0.55
1:C:108[A]:MET:HG3	1:F:108[A]:MET:SD	2.47	0.55
1:A:2:ALA:HB3	3:A:530:HOH:O	2.06	0.55
1:B:108[A]:MET:SD	1:D:108[A]:MET:HG3	2.48	0.54
1:B:101:VAL:HG11	1:B:213:THR:HG23	1.89	0.53
1:B:147:ILE:HG21	1:B:228:ILE:HD11	1.91	0.53
1:C:102:ARG:HD2	1:C:213:THR:HG21	1.92	0.52
1:B:101:VAL:CG1	1:B:213:THR:HG23	2.40	0.52
1:F:101:VAL:O	1:F:102:ARG:HB2	2.10	0.51
1:E:3:THR:HB	1:E:4:PRO:HD2	1.92	0.51
1:E:149:VAL:HG22	3:E:435:HOH:O	2.11	0.49
1:E:39[A]:GLN:NE2	1:E:42:ASP:HB3	2.28	0.49
1:A:145:ARG:NE	1:A:227:GLU:HG2	2.28	0.49
1:C:216:GLU:OE2	1:C:217:GLU:HG3	2.13	0.48
1:A:123:ASP:HB2	3:A:543:HOH:O	2.14	0.48
1:F:96:ASN:HB3	1:F:99:ILE:CD1	2.44	0.48
1:F:147:ILE:HD13	1:F:228:ILE:HD11	1.96	0.47
1:C:206:HIS:HB3	1:C:209:THR:HG22	1.95	0.47
1:F:145[B]:ARG:HH21	1:F:145[B]:ARG:HG3	1.79	0.47
1:A:108[A]:MET:SD	1:E:108[A]:MET:HG3	2.55	0.47
1:A:108[A]:MET:HG3	1:E:108[A]:MET:SD	2.55	0.47
1:B:104:VAL:HG21	1:B:147:ILE:HD11	1.98	0.47
1:C:100:LYS:NZ	1:C:101:VAL:H	2.07	0.46
1:C:173:LYS:HD3	1:C:174:TYR:CE2	2.51	0.46
1:C:108[A]:MET:CE	1:F:108[A]:MET:HG3	2.47	0.45

Continued on next page...

*Continued from previous page...*

Atom-1	Atom-2	Interatomic distance (Å)	Clash overlap (Å)
1:B:136:LYS:O	1:B:140:GLU:HG3	2.16	0.45
1:C:84:LYS:HD3	3:C:348:HOH:O	2.15	0.45
1:C:3:THR:HB	1:C:4:PRO:HD2	1.99	0.45
1:F:96:ASN:HB3	1:F:99:ILE:HD13	1.99	0.45
1:D:63:HIS:CE1	1:D:182:GLU:HG2	2.53	0.44
1:C:63:HIS:CE1	1:C:182:GLU:HG2	2.52	0.44
1:B:102:ARG:HD2	1:B:221:THR:OG1	2.18	0.44
1:D:136:LYS:O	1:D:140:GLU:HG3	2.18	0.44
3:A:551:HOH:O	1:E:133:LYS:HE3	2.18	0.43
1:F:158:GLU:HG3	3:F:472:HOH:O	2.17	0.43
1:F:63:HIS:CE1	1:F:182:GLU:HG2	2.54	0.43
1:A:145:ARG:HD2	3:A:398:HOH:O	2.19	0.43
1:C:173:LYS:HE2	3:C:531:HOH:O	2.18	0.42
1:E:63:HIS:CE1	1:E:182:GLU:HG2	2.55	0.42
1:B:204:SER:O	1:B:213:THR:OG1	2.37	0.42
1:C:100:LYS:HG3	1:C:101:VAL:N	2.34	0.42
1:F:145[B]:ARG:NH2	1:F:145[B]:ARG:HG3	2.34	0.41
1:E:211:GLU:HG3	3:E:397:HOH:O	2.20	0.41
1:A:3:THR:HB	1:A:4:PRO:HD2	2.02	0.41
1:B:101:VAL:O	1:B:102:ARG:HB2	2.20	0.41
1:E:196:LYS:HE2	3:E:489:HOH:O	2.20	0.41
1:A:45:ASN:HB3	1:D:45:ASN:HB3	2.01	0.41
1:A:44:ARG:HA	1:D:22:ASP:OD1	2.20	0.41
1:D:22:ASP:HB3	1:D:25:ARG:HG3	2.03	0.41
1:A:145:ARG:HE	1:A:227:GLU:HG2	1.86	0.41
1:C:22:ASP:OD1	1:E:44:ARG:HA	2.21	0.41
1:B:213:THR:HG22	3:B:376:HOH:O	2.21	0.40
1:A:22:ASP:OD1	1:D:44:ARG:HA	2.21	0.40

There are no symmetry-related clashes.

## 5.3 Torsion angles [i](#)

### 5.3.1 Protein backbone [i](#)

In the following table, the Percentiles column shows the percent Ramachandran outliers of the chain as a percentile score with respect to all X-ray entries followed by that with respect to entries of similar resolution.

The Analysed column shows the number of residues for which the backbone conformation was analysed, and the total number of residues.

Mol	Chain	Analysed	Favoured	Allowed	Outliers	Percentiles	
1	A	239/253 (94%)	233 (98%)	6 (2%)	0	100	100
1	B	238/253 (94%)	231 (97%)	7 (3%)	0	100	100
1	C	241/253 (95%)	235 (98%)	6 (2%)	0	100	100
1	D	241/253 (95%)	234 (97%)	7 (3%)	0	100	100
1	E	239/253 (94%)	233 (98%)	6 (2%)	0	100	100
1	F	232/253 (92%)	225 (97%)	7 (3%)	0	100	100
All	All	1430/1518 (94%)	1391 (97%)	39 (3%)	0	100	100

There are no Ramachandran outliers to report.

### 5.3.2 Protein sidechains ⓘ

In the following table, the Percentiles column shows the percent sidechain outliers of the chain as a percentile score with respect to all X-ray entries followed by that with respect to entries of similar resolution.

The Analysed column shows the number of residues for which the sidechain conformation was analysed, and the total number of residues.

Mol	Chain	Analysed	Rotameric	Outliers	Percentiles	
1	A	182/201 (90%)	181 (100%)	1 (0%)	92	80
1	B	180/201 (90%)	176 (98%)	4 (2%)	60	26
1	C	188/201 (94%)	185 (98%)	3 (2%)	70	39
1	D	189/201 (94%)	186 (98%)	3 (2%)	70	39
1	E	187/201 (93%)	186 (100%)	1 (0%)	92	80
1	F	179/201 (89%)	176 (98%)	3 (2%)	68	36
All	All	1105/1206 (92%)	1090 (99%)	15 (1%)	74	45

All (15) residues with a non-rotameric sidechain are listed below:

Mol	Chain	Res	Type
1	A	180	GLU
1	B	56	ARG
1	B	180	GLU
1	B	213	THR
1	B	219	GLN
1	C	100	LYS
1	C	180	GLU

*Continued on next page...*

*Continued from previous page...*

Mol	Chain	Res	Type
1	C	216	GLU
1	D	100	LYS
1	D	180	GLU
1	D	218	ARG
1	E	180	GLU
1	F	3	THR
1	F	56	ARG
1	F	180	GLU

Some sidechains can be flipped to improve hydrogen bonding and reduce clashes. All (17) such sidechains are listed below:

Mol	Chain	Res	Type
1	A	9	GLN
1	A	223	ASN
1	B	39	GLN
1	B	219	GLN
1	B	223	ASN
1	C	220	ASN
1	C	223	ASN
1	C	238	GLN
1	D	219	GLN
1	D	220	ASN
1	D	223	ASN
1	D	238	GLN
1	E	220	ASN
1	E	223	ASN
1	E	238	GLN
1	F	39	GLN
1	F	220	ASN

### 5.3.3 RNA ⓘ

There are no RNA molecules in this entry.

## 5.4 Non-standard residues in protein, DNA, RNA chains ⓘ

There are no non-standard protein/DNA/RNA residues in this entry.



## 5.5 Carbohydrates [i](#)

There are no carbohydrates in this entry.

## 5.6 Ligand geometry [i](#)

6 ligands are modelled in this entry.

In the following table, the Counts columns list the number of bonds (or angles) for which Mogul statistics could be retrieved, the number of bonds (or angles) that are observed in the model and the number of bonds (or angles) that are defined in the chemical component dictionary. The Link column lists molecule types, if any, to which the group is linked. The Z score for a bond length (or angle) is the number of standard deviations the observed value is removed from the expected value. A bond length (or angle) with  $|Z| > 2$  is considered an outlier worth inspection. RMSZ is the root-mean-square of all Z scores of the bond lengths (or angles).

Mol	Type	Chain	Res	Link	Bond lengths			Bond angles		
					Counts	RMSZ	# Z  > 2	Counts	RMSZ	# Z  > 2
2	ADN	A	252	-	16,21,21	1.42	4 (25%)	16,31,31	1.66	4 (25%)
2	ADN	B	252	-	16,21,21	1.31	2 (12%)	16,31,31	1.41	2 (12%)
2	ADN	C	252	-	16,21,21	1.42	3 (18%)	16,31,31	1.75	3 (18%)
2	ADN	D	252	-	16,21,21	1.47	3 (18%)	16,31,31	1.73	4 (25%)
2	ADN	E	252	-	16,21,21	1.41	3 (18%)	16,31,31	1.51	3 (18%)
2	ADN	F	252	-	16,21,21	1.33	2 (12%)	16,31,31	1.55	2 (12%)

In the following table, the Chirals column lists the number of chiral outliers, the number of chiral centers analysed, the number of these observed in the model and the number defined in the chemical component dictionary. Similar counts are reported in the Torsion and Rings columns. '-' means no outliers of that kind were identified.

Mol	Type	Chain	Res	Link	Chirals	Torsions	Rings
2	ADN	A	252	-	-	0/2/22/22	0/3/3/3
2	ADN	B	252	-	-	0/2/22/22	0/3/3/3
2	ADN	C	252	-	-	0/2/22/22	0/3/3/3
2	ADN	D	252	-	-	0/2/22/22	0/3/3/3
2	ADN	E	252	-	-	0/2/22/22	0/3/3/3
2	ADN	F	252	-	-	0/2/22/22	0/3/3/3

All (17) bond length outliers are listed below:

Mol	Chain	Res	Type	Atoms	Z	Observed(Å)	Ideal(Å)
2	F	252	ADN	C8-N7	-3.41	1.28	1.34
2	B	252	ADN	C8-N7	-3.32	1.28	1.34

*Continued on next page...*

*Continued from previous page...*

Mol	Chain	Res	Type	Atoms	Z	Observed(Å)	Ideal(Å)
2	D	252	ADN	C8-N7	-3.28	1.28	1.34
2	E	252	ADN	C8-N7	-3.23	1.28	1.34
2	A	252	ADN	C8-N7	-2.98	1.28	1.34
2	C	252	ADN	C8-N7	-2.82	1.29	1.34
2	C	252	ADN	O4'-C1'	-2.67	1.37	1.41
2	D	252	ADN	O4'-C1'	-2.66	1.37	1.41
2	A	252	ADN	C5-N7	-2.29	1.31	1.39
2	E	252	ADN	C5-N7	-2.14	1.32	1.39
2	B	252	ADN	C5-N7	-2.13	1.32	1.39
2	A	252	ADN	O4'-C1'	-2.01	1.38	1.41
2	F	252	ADN	C2-N1	2.37	1.38	1.33
2	E	252	ADN	C2-N1	2.74	1.39	1.33
2	A	252	ADN	C2-N1	2.76	1.39	1.33
2	C	252	ADN	C2-N1	2.88	1.39	1.33
2	D	252	ADN	C2-N1	3.05	1.39	1.33

All (18) bond angle outliers are listed below:

Mol	Chain	Res	Type	Atoms	Z	Observed(°)	Ideal(°)
2	C	252	ADN	N3-C2-N1	-2.66	126.86	128.89
2	D	252	ADN	N3-C2-N1	-2.47	127.00	128.89
2	A	252	ADN	N3-C2-N1	-2.11	127.28	128.89
2	A	252	ADN	O4'-C1'-N9	2.00	112.29	108.10
2	D	252	ADN	O4'-C1'-N9	2.11	112.52	108.10
2	E	252	ADN	O4'-C1'-N9	2.21	112.72	108.10
2	C	252	ADN	C4-C5-N7	2.59	111.86	109.48
2	D	252	ADN	C4-C5-N7	2.63	111.90	109.48
2	B	252	ADN	C4-C5-N7	3.15	112.38	109.48
2	F	252	ADN	C4-C5-N7	3.24	112.46	109.48
2	E	252	ADN	C4-C5-N7	3.30	112.52	109.48
2	E	252	ADN	C1'-N9-C4	3.37	132.02	126.94
2	A	252	ADN	C1'-N9-C4	3.63	132.41	126.94
2	B	252	ADN	C1'-N9-C4	3.76	132.61	126.94
2	A	252	ADN	C4-C5-N7	3.87	113.04	109.48
2	F	252	ADN	C1'-N9-C4	4.22	133.30	126.94
2	C	252	ADN	C1'-N9-C4	4.70	134.03	126.94
2	D	252	ADN	C1'-N9-C4	4.83	134.22	126.94

There are no chirality outliers.

There are no torsion outliers.

There are no ring outliers.

No monomer is involved in short contacts.

## 5.7 Other polymers

There are no such residues in this entry.

## 5.8 Polymer linkage issues

There are no chain breaks in this entry.

## 6 Fit of model and data ⓘ

### 6.1 Protein, DNA and RNA chains ⓘ

In the following table, the column labelled ‘#RSRZ> 2’ contains the number (and percentage) of RSRZ outliers, followed by percent RSRZ outliers for the chain as percentile scores relative to all X-ray entries and entries of similar resolution. The OWAB column contains the minimum, median, 95<sup>th</sup> percentile and maximum values of the occupancy-weighted average B-factor per residue. The column labelled ‘Q< 0.9’ lists the number of (and percentage) of residues with an average occupancy less than 0.9.

Mol	Chain	Analysed	<RSRZ>	#RSRZ>2	OWAB(Å <sup>2</sup> )	Q<0.9
1	A	237/253 (93%)	-0.64	2 (0%) 87 88	6, 10, 26, 38	0
1	B	237/253 (93%)	-0.36	4 (1%) 73 75	7, 15, 36, 46	0
1	C	237/253 (93%)	-0.59	6 (2%) 61 64	6, 11, 29, 44	0
1	D	237/253 (93%)	-0.56	7 (2%) 54 57	6, 11, 28, 43	0
1	E	236/253 (93%)	-0.65	2 (0%) 87 88	5, 10, 25, 38	0
1	F	234/253 (92%)	-0.39	3 (1%) 79 81	6, 15, 33, 43	0
All	All	1418/1518 (93%)	-0.53	24 (1%) 73 75	5, 12, 30, 46	0

All (24) RSRZ outliers are listed below:

Mol	Chain	Res	Type	RSRZ
1	D	209	THR	5.2
1	B	213	THR	4.5
1	C	209	THR	4.3
1	B	2	ALA	4.2
1	D	207	ILE	4.0
1	D	2	ALA	3.9
1	D	212	GLN	3.9
1	C	207	ILE	3.9
1	A	212	GLN	3.2
1	F	209	THR	3.2
1	D	211	GLU	3.0
1	D	210	GLY	3.0
1	C	212	GLN	2.9
1	E	212	GLN	2.9
1	C	98	GLY	2.9
1	B	209	THR	2.7
1	A	213	THR	2.7
1	B	208	LYS	2.5
1	C	2	ALA	2.4

*Continued on next page...*

*Continued from previous page...*

Mol	Chain	Res	Type	RSRZ
1	F	2	ALA	2.4
1	E	211	GLU	2.4
1	D	98	GLY	2.2
1	C	210	GLY	2.2
1	F	213	THR	2.2

## 6.2 Non-standard residues in protein, DNA, RNA chains [i](#)

There are no non-standard protein/DNA/RNA residues in this entry.

## 6.3 Carbohydrates [i](#)

There are no carbohydrates in this entry.

## 6.4 Ligands [i](#)

In the following table, the Atoms column lists the number of modelled atoms in the group and the number defined in the chemical component dictionary. LLDF column lists the quality of electron density of the group with respect to its neighbouring residues in protein, DNA or RNA chains. The B-factors column lists the minimum, median, 95<sup>th</sup> percentile and maximum values of B factors of atoms in the group. The column labelled 'Q < 0.9' lists the number of atoms with occupancy less than 0.9.

Mol	Type	Chain	Res	Atoms	RSCC	RSR	LLDF	B-factors(Å <sup>2</sup> )	Q<0.9
2	ADN	F	252	19/19	0.96	0.06	0.01	11,13,15,15	0
2	ADN	D	252	19/19	0.97	0.06	-0.11	7,9,12,14	0
2	ADN	C	252	19/19	0.97	0.06	-0.20	7,10,11,14	0
2	ADN	A	252	19/19	0.98	0.05	-0.20	8,9,12,13	0
2	ADN	E	252	19/19	0.98	0.05	-0.46	8,9,11,13	0
2	ADN	B	252	19/19	0.98	0.05	-0.50	11,13,14,14	0

## 6.5 Other polymers [i](#)

There are no such residues in this entry.