



Full wwPDB X-ray Structure Validation Report ⓘ

Jan 31, 2016 – 10:53 PM GMT

PDB ID : 1VKJ
Title : Crystal structure of heparan sulfate 3-O-sulfotransferase isoform 1 in the presence of PAP
Authors : Thorp, S.; Lee, K.A.; Negishi, M.; Linhardt, R.J.; Liu, J.; Pedersen, L.C.
Deposited on : 2004-05-25
Resolution : 2.50 Å(reported)

This is a Full wwPDB X-ray Structure Validation Report for a publicly released PDB entry.
We welcome your comments at validation@mail.wwpdb.org
A user guide is available at
<http://wwpdb.org/validation/2016/XrayValidationReportHelp>
with specific help available everywhere you see the ⓘ symbol.

The following versions of software and data (see [references ⓘ](#)) were used in the production of this report:

MolProbity : 4.02b-467
Mogul : 1.7 (RC4), CSD as536be (2015)
Xtriage (Phenix) : 1.9-1692
EDS : rb-20026688
Percentile statistics : 20151230.v01 (using entries in the PDB archive December 30th 2015)
Refmac : 5.8.0135
CCP4 : 6.5.0
Ideal geometry (proteins) : Engh & Huber (2001)
Ideal geometry (DNA, RNA) : Parkinson et al. (1996)
Validation Pipeline (wwPDB-VP) : trunk26865

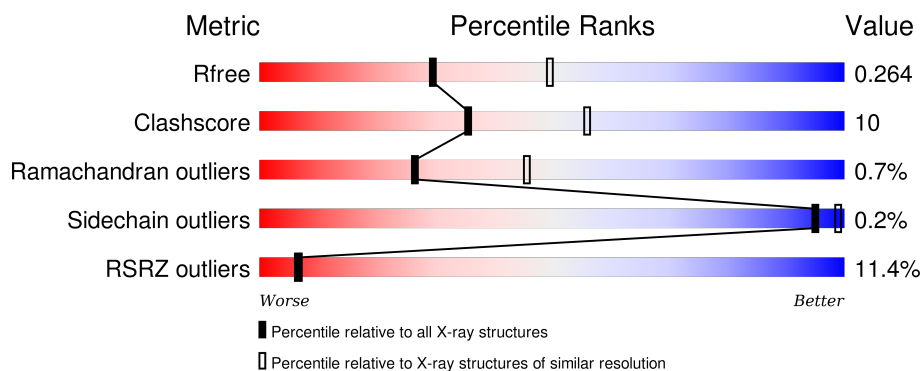
1 Overall quality at a glance

The following experimental techniques were used to determine the structure:

X-RAY DIFFRACTION

The reported resolution of this entry is 2.50 Å.

Percentile scores (ranging between 0-100) for global validation metrics of the entry are shown in the following graphic. The table shows the number of entries on which the scores are based.



Metric	Whole archive (#Entries)	Similar resolution (#Entries, resolution range(Å))
R_{free}	91344	3553 (2.50-2.50)
Clashscore	102246	4242 (2.50-2.50)
Ramachandran outliers	100387	4156 (2.50-2.50)
Sidechain outliers	100360	4158 (2.50-2.50)
RSRZ outliers	91569	3562 (2.50-2.50)

The table below summarises the geometric issues observed across the polymeric chains and their fit to the electron density. The red, orange, yellow and green segments on the lower bar indicate the fraction of residues that contain outliers for ≥ 3 , 2, 1 and 0 types of geometric quality criteria. A grey segment represents the fraction of residues that are not modelled. The numeric value for each fraction is indicated below the corresponding segment, with a dot representing fractions $\leq 5\%$. The upper red bar (where present) indicates the fraction of residues that have poor fit to the electron density. The numeric value is given above the bar.

Mol	Chain	Length	Quality of chain
1	A	285	<div> <div>2%</div> <div>73% 17% 9%</div> </div>
1	B	285	<div> <div>%</div> <div>73% 17% 9%</div> </div>
1	C	285	<div> <div>28%</div> <div>64% 22% 13%</div> </div>

2 Entry composition

There are 4 unique types of molecules in this entry. The entry contains 6265 atoms, of which 0 are hydrogens and 0 are deuteriums.

In the tables below, the ZeroOcc column contains the number of atoms modelled with zero occupancy, the AltConf column contains the number of residues with at least one atom in alternate conformation and the Trace column contains the number of residues modelled with at most 2 atoms.

- Molecule 1 is a protein called heparan sulfate (glucosamine) 3-O-sulfotransferase 1.

Mol	Chain	Residues	Atoms					ZeroOcc	AltConf	Trace
1	A	258	Total	C	N	O	S	0	0	0
			2113	1366	374	366	7			
1	B	258	Total	C	N	O	S	0	0	0
			2126	1375	378	366	7			
1	C	247	Total	C	N	O	S	0	0	0
			1757	1133	306	314	4			

There are 63 discrepancies between the modelled and reference sequences:

Chain	Residue	Modelled	Actual	Comment	Reference
A	27	MET	-	EXPRESSION TAG	UNP O35310
A	28	GLY	-	EXPRESSION TAG	UNP O35310
A	29	SER	-	EXPRESSION TAG	UNP O35310
A	30	SER	-	EXPRESSION TAG	UNP O35310
A	31	HIS	-	EXPRESSION TAG	UNP O35310
A	32	HIS	-	EXPRESSION TAG	UNP O35310
A	33	HIS	-	EXPRESSION TAG	UNP O35310
A	34	HIS	-	EXPRESSION TAG	UNP O35310
A	35	HIS	-	EXPRESSION TAG	UNP O35310
A	36	HIS	-	EXPRESSION TAG	UNP O35310
A	37	SER	-	EXPRESSION TAG	UNP O35310
A	38	SER	-	EXPRESSION TAG	UNP O35310
A	39	GLY	-	EXPRESSION TAG	UNP O35310
A	40	LEU	-	EXPRESSION TAG	UNP O35310
A	41	VAL	-	EXPRESSION TAG	UNP O35310
A	42	PRO	-	EXPRESSION TAG	UNP O35310
A	43	ARG	-	EXPRESSION TAG	UNP O35310
A	44	GLY	-	EXPRESSION TAG	UNP O35310
A	45	SER	-	EXPRESSION TAG	UNP O35310
A	46	HIS	-	EXPRESSION TAG	UNP O35310
A	47	MET	-	EXPRESSION TAG	UNP O35310
B	27	MET	-	EXPRESSION TAG	UNP O35310
B	28	GLY	-	EXPRESSION TAG	UNP O35310

Continued on next page...

Continued from previous page...

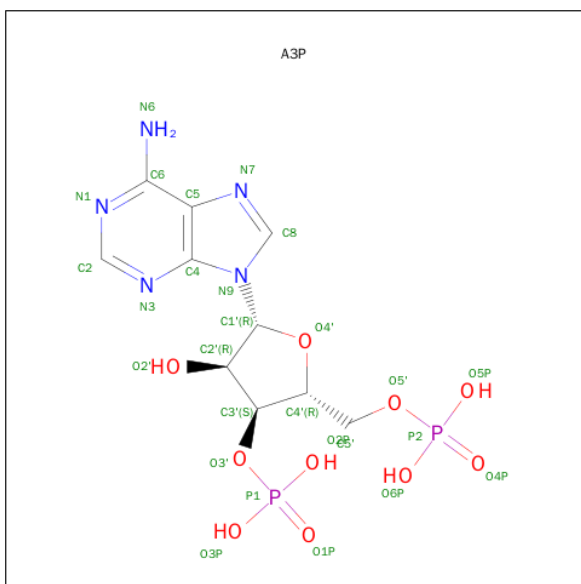
Chain	Residue	Modelled	Actual	Comment	Reference
B	29	SER	-	EXPRESSION TAG	UNP O35310
B	30	SER	-	EXPRESSION TAG	UNP O35310
B	31	HIS	-	EXPRESSION TAG	UNP O35310
B	32	HIS	-	EXPRESSION TAG	UNP O35310
B	33	HIS	-	EXPRESSION TAG	UNP O35310
B	34	HIS	-	EXPRESSION TAG	UNP O35310
B	35	HIS	-	EXPRESSION TAG	UNP O35310
B	36	HIS	-	EXPRESSION TAG	UNP O35310
B	37	SER	-	EXPRESSION TAG	UNP O35310
B	38	SER	-	EXPRESSION TAG	UNP O35310
B	39	GLY	-	EXPRESSION TAG	UNP O35310
B	40	LEU	-	EXPRESSION TAG	UNP O35310
B	41	VAL	-	EXPRESSION TAG	UNP O35310
B	42	PRO	-	EXPRESSION TAG	UNP O35310
B	43	ARG	-	EXPRESSION TAG	UNP O35310
B	44	GLY	-	EXPRESSION TAG	UNP O35310
B	45	SER	-	EXPRESSION TAG	UNP O35310
B	46	HIS	-	EXPRESSION TAG	UNP O35310
B	47	MET	-	EXPRESSION TAG	UNP O35310
C	27	MET	-	EXPRESSION TAG	UNP O35310
C	28	GLY	-	EXPRESSION TAG	UNP O35310
C	29	SER	-	EXPRESSION TAG	UNP O35310
C	30	SER	-	EXPRESSION TAG	UNP O35310
C	31	HIS	-	EXPRESSION TAG	UNP O35310
C	32	HIS	-	EXPRESSION TAG	UNP O35310
C	33	HIS	-	EXPRESSION TAG	UNP O35310
C	34	HIS	-	EXPRESSION TAG	UNP O35310
C	35	HIS	-	EXPRESSION TAG	UNP O35310
C	36	HIS	-	EXPRESSION TAG	UNP O35310
C	37	SER	-	EXPRESSION TAG	UNP O35310
C	38	SER	-	EXPRESSION TAG	UNP O35310
C	39	GLY	-	EXPRESSION TAG	UNP O35310
C	40	LEU	-	EXPRESSION TAG	UNP O35310
C	41	VAL	-	EXPRESSION TAG	UNP O35310
C	42	PRO	-	EXPRESSION TAG	UNP O35310
C	43	ARG	-	EXPRESSION TAG	UNP O35310
C	44	GLY	-	EXPRESSION TAG	UNP O35310
C	45	SER	-	EXPRESSION TAG	UNP O35310
C	46	HIS	-	EXPRESSION TAG	UNP O35310
C	47	MET	-	EXPRESSION TAG	UNP O35310

- Molecule 2 is SULFATE ION (three-letter code: SO4) (formula: O₄S).



Mol	Chain	Residues	Atoms			ZeroOcc	AltConf
2	A	1	Total	O	S	0	0
			5	4	1		
2	B	1	Total	O	S	0	0
			5	4	1		

- Molecule 3 is ADENOSINE-3'-5'-DIPHOSPHATE (three-letter code: A3P) (formula: C₁₀H₁₅N₅O₁₀P₂).



Mol	Chain	Residues	Atoms				ZeroOcc	AltConf
3	A	3	Total	C	N	O	P	0
			81	30	15	30	6	

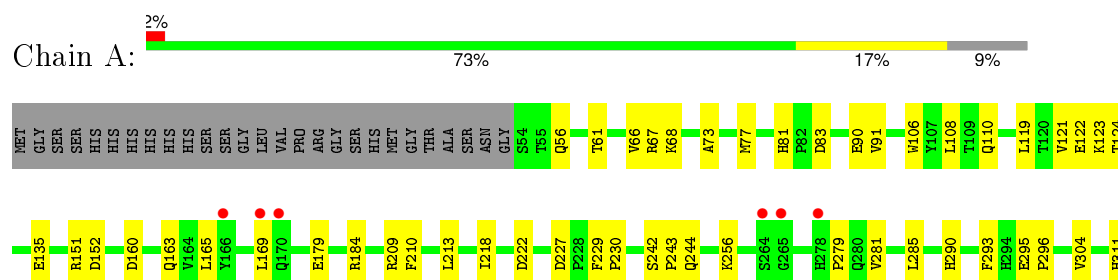
- Molecule 4 is water.

Mol	Chain	Residues	Atoms		ZeroOcc	AltConf
4	A	79	Total 79	O 79	0	0
4	B	98	Total 98	O 98	0	0
4	C	1	Total 1	O 1	0	0

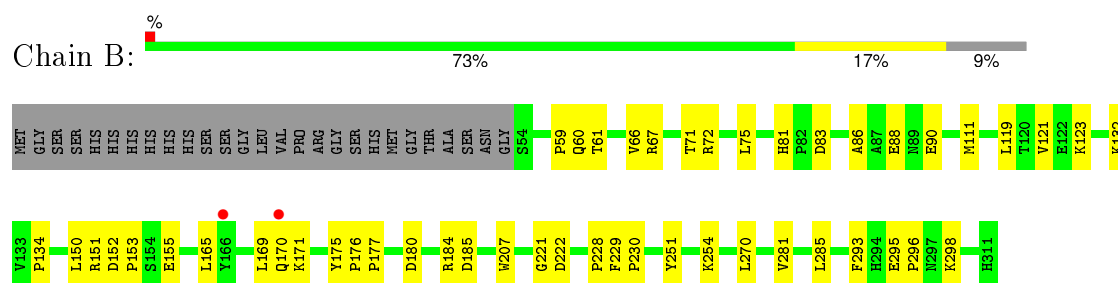
3 Residue-property plots

These plots are drawn for all protein, RNA and DNA chains in the entry. The first graphic for a chain summarises the proportions of errors displayed in the second graphic. The second graphic shows the sequence view annotated by issues in geometry and electron density. Residues are color-coded according to the number of geometric quality criteria for which they contain at least one outlier: green = 0, yellow = 1, orange = 2 and red = 3 or more. A red dot above a residue indicates a poor fit to the electron density ($RSRZ > 2$). Stretches of 2 or more consecutive residues without any outlier are shown as a green connector. Residues present in the sample, but not in the model, are shown in grey.

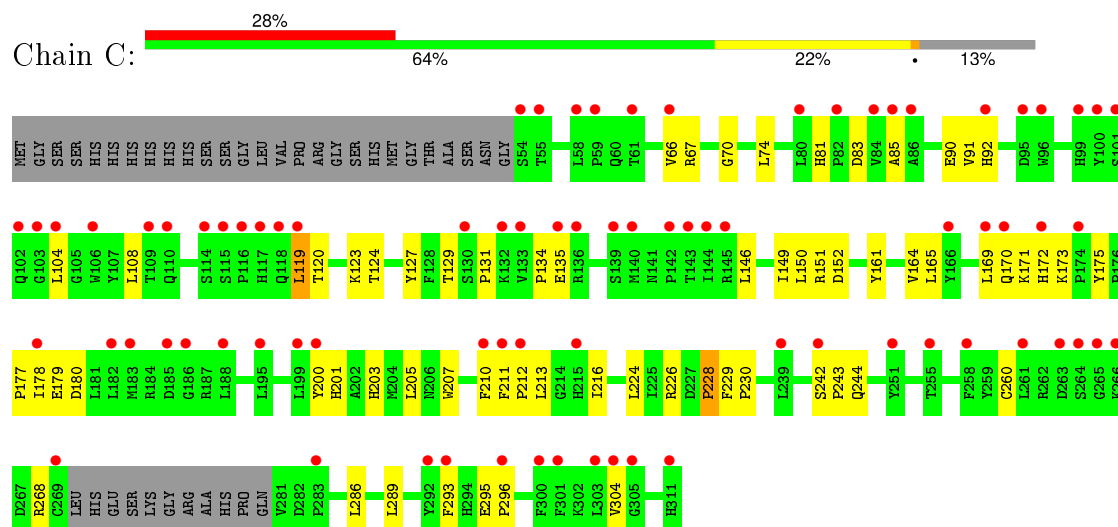
- Molecule 1: heparan sulfate (glucosamine) 3-O-sulfotransferase 1



- Molecule 1: heparan sulfate (glucosamine) 3-O-sulfotransferase 1



- Molecule 1: heparan sulfate (glucosamine) 3-O-sulfotransferase 1



4 Data and refinement statistics

Property	Value	Source
Space group	I 41 2 2	Depositor
Cell constants a, b, c, α , β , γ	300.14Å 300.14Å 84.20Å 90.00° 90.00° 90.00°	Depositor
Resolution (Å)	24.84 – 2.50 42.57 – 2.50	Depositor EDS
% Data completeness (in resolution range)	90.6 (24.84-2.50) 90.7 (42.57-2.50)	Depositor EDS
R_{merge}	(Not available)	Depositor
R_{sym}	0.12	Depositor
$\langle I/\sigma(I) \rangle$ ¹	3.42 (at 2.51Å)	Xtriage
Refinement program	CNS 1.1	Depositor
R, R_{free}	0.243 , 0.264 0.243 , 0.264	Depositor DCC
R_{free} test set	3021 reflections (5.04%)	DCC
Wilson B-factor (Å ²)	38.2	Xtriage
Anisotropy	0.513	Xtriage
Bulk solvent k_{sol} (e/Å ³), B_{sol} (Å ²)	0.30 , 45.8	EDS
Estimated twinning fraction	No twinning to report.	Xtriage
L-test for twinning ²	$\langle L \rangle = 0.48$, $\langle L^2 \rangle = 0.31$	Xtriage
Outliers	1 of 63921 reflections (0.002%)	Xtriage
F_o, F_c correlation	0.92	EDS
Total number of atoms	6265	wwPDB-VP
Average B, all atoms (Å ²)	58.0	wwPDB-VP

Xtriage's analysis on translational NCS is as follows: *The largest off-origin peak in the Patterson function is 2.95% of the height of the origin peak. No significant pseudotranslation is detected.*

¹Intensities estimated from amplitudes.

²Theoretical values of $\langle |L| \rangle$, $\langle L^2 \rangle$ for acentric reflections are 0.5, 0.375 respectively for untwinned datasets, and 0.333, 0.2 for perfectly twinned datasets.

5 Model quality [i](#)

5.1 Standard geometry [i](#)

Bond lengths and bond angles in the following residue types are not validated in this section: A3P, SO4

The Z score for a bond length (or angle) is the number of standard deviations the observed value is removed from the expected value. A bond length (or angle) with $|Z| > 5$ is considered an outlier worth inspection. RMSZ is the root-mean-square of all Z scores of the bond lengths (or angles).

Mol	Chain	Bond lengths		Bond angles	
		RMSZ	# $ Z > 5$	RMSZ	# $ Z > 5$
1	A	0.42	0/2179	0.60	0/2959
1	B	0.42	0/2193	0.63	0/2975
1	C	0.52	0/1809	0.71	0/2488
All	All	0.45	0/6181	0.64	0/8422

There are no bond length outliers.

There are no bond angle outliers.

There are no chirality outliers.

There are no planarity outliers.

5.2 Too-close contacts [i](#)

In the following table, the Non-H and H(model) columns list the number of non-hydrogen atoms and hydrogen atoms in the chain respectively. The H(added) column lists the number of hydrogen atoms added and optimized by MolProbity. The Clashes column lists the number of clashes within the asymmetric unit, whereas Symm-Clashes lists symmetry related clashes.

Mol	Chain	Non-H	H(model)	H(added)	Clashes	Symm-Clashes
1	A	2113	0	2054	37	0
1	B	2126	0	2081	34	0
1	C	1757	0	1470	45	1
2	A	5	0	0	0	0
2	B	5	0	0	1	0
3	A	81	0	33	2	0
4	A	79	0	0	3	0
4	B	98	0	0	3	0
4	C	1	0	0	0	0
All	All	6265	0	5638	114	1

The all-atom clashscore is defined as the number of clashes found per 1000 atoms (including hydrogen atoms). The all-atom clashscore for this structure is 10.

All (114) close contacts within the same asymmetric unit are listed below, sorted by their clash magnitude.

Atom-1	Atom-2	Interatomic distance (Å)	Clash overlap (Å)
1:B:60:GLN:HB2	1:B:119:LEU:CD1	2.14	0.77
1:A:218:ILE:HD12	1:A:304:VAL:HG11	1.66	0.75
1:A:279:PRO:O	1:A:281:VAL:HG23	1.93	0.68
1:B:254:LYS:HB2	1:C:230:PRO:HG3	1.74	0.68
1:B:61:THR:HG23	1:B:121:VAL:HG13	1.77	0.67
1:C:201:HIS:CE1	1:C:205:LEU:HD11	2.31	0.66
1:B:60:GLN:HB2	1:B:119:LEU:HD13	1.77	0.65
1:B:177:PRO:HD2	1:B:180:ASP:OD2	1.96	0.65
1:A:61:THR:HG23	1:A:121:VAL:HG13	1.76	0.65
1:C:129:THR:HG22	1:C:203:HIS:CE1	2.32	0.65
1:A:119:LEU:O	1:A:119:LEU:HD12	1.97	0.65
1:B:151:ARG:HB2	1:B:222:ASP:OD1	1.97	0.64
1:C:66:VAL:HG22	1:C:67:ARG:N	2.12	0.64
1:C:119:LEU:C	1:C:119:LEU:HD12	2.18	0.62
1:C:66:VAL:HG22	1:C:67:ARG:H	1.64	0.62
1:A:119:LEU:C	1:A:119:LEU:HD12	2.21	0.60
1:A:151:ARG:HB2	1:A:222:ASP:OD1	2.01	0.60
1:B:295:GLU:OE2	1:B:298:LYS:HE2	2.00	0.60
1:B:229:PHE:HB3	1:B:230:PRO:HD3	1.82	0.60
1:C:150:LEU:HD13	1:C:200:TYR:CD1	2.37	0.60
1:A:295:GLU:HB3	1:A:296:PRO:HD3	1.84	0.59
1:C:74:LEU:HD12	1:C:74:LEU:O	2.01	0.59
1:C:81:HIS:CE1	1:C:83:ASP:HB2	2.39	0.58
1:A:229:PHE:HB3	1:A:230:PRO:HD3	1.83	0.58
1:A:165:LEU:O	1:A:169:LEU:HD12	2.04	0.58
1:C:119:LEU:HD12	1:C:119:LEU:O	2.06	0.56
1:C:149:ILE:HG23	1:C:149:ILE:O	2.06	0.55
1:B:71:THR:HB	1:B:123:LYS:HD2	1.88	0.55
1:B:90:GLU:HA	1:B:123:LYS:O	2.06	0.55
1:C:229:PHE:HB3	1:C:230:PRO:HD3	1.89	0.55
1:C:201:HIS:HE1	1:C:205:LEU:HD11	1.71	0.55
1:A:281:VAL:HG13	1:A:285:LEU:HD23	1.89	0.54
1:B:59:PRO:HG3	1:B:111:MET:SD	2.47	0.54
1:B:151:ARG:HA	4:B:619:HOH:O	2.08	0.53
1:C:293:PHE:C	1:C:296:PRO:HD2	2.28	0.53
1:B:228:PRO:HD2	4:B:633:HOH:O	2.09	0.52
1:A:281:VAL:CG1	1:A:285:LEU:HD23	2.40	0.52

Continued on next page...

Continued from previous page...

Atom-1	Atom-2	Interatomic distance (Å)	Clash overlap (Å)
1:C:151:ARG:O	1:C:152:ASP:C	2.49	0.51
1:C:212:PRO:O	1:C:213:LEU:C	2.48	0.51
1:B:165:LEU:O	1:B:169:LEU:HD13	2.11	0.51
1:C:165:LEU:O	1:C:169:LEU:HD12	2.11	0.50
1:C:161:TYR:CG	1:C:178:ILE:HD13	2.47	0.50
1:C:131:PRO:O	1:C:134:PRO:HD2	2.12	0.50
1:A:67:ARG:HG2	1:A:68:LYS:HG2	1.94	0.49
1:C:90:GLU:HA	1:C:123:LYS:O	2.11	0.49
1:B:152:ASP:HB3	1:B:155:GLU:CG	2.42	0.49
1:A:66:VAL:HG22	1:A:67:ARG:N	2.28	0.49
1:C:124:THR:HG21	1:C:127:TYR:CE2	2.47	0.49
1:B:72:ARG:HD3	2:B:602:SO4:O1	2.13	0.49
1:C:171:LYS:O	1:C:173:LYS:N	2.45	0.49
1:A:91:VAL:HG21	1:A:122:GLU:HG3	1.94	0.48
1:B:281:VAL:HG13	1:B:285:LEU:HD23	1.95	0.48
1:A:290:HIS:CE1	1:A:311:HIS:CD2	3.02	0.48
1:A:218:ILE:CD1	1:A:304:VAL:HG11	2.40	0.47
1:A:304:VAL:O	1:A:304:VAL:HG12	2.14	0.47
1:A:227:ASP:O	1:A:230:PRO:HD2	2.14	0.47
1:B:81:HIS:CE1	1:B:83:ASP:HB2	2.49	0.47
1:C:293:PHE:O	1:C:296:PRO:HD2	2.14	0.47
1:B:75:LEU:HD11	1:B:86:ALA:HB1	1.97	0.47
1:A:209:ARG:HG2	1:A:210:PHE:CE2	2.50	0.46
1:A:90:GLU:HA	1:A:123:LYS:O	2.14	0.46
1:A:122:GLU:OE2	1:A:124:THR:OG1	2.24	0.46
1:C:242:SER:O	1:C:244:GLN:N	2.49	0.46
1:B:66:VAL:HG22	1:B:67:ARG:N	2.30	0.46
1:A:242:SER:O	1:A:244:GLN:N	2.49	0.46
1:B:293:PHE:C	1:B:296:PRO:HD2	2.36	0.45
1:C:260:CYS:HB3	1:C:268:ARG:O	2.16	0.45
1:C:91:VAL:O	1:C:92:HIS:HB2	2.17	0.45
1:C:146:LEU:O	1:C:216:ILE:HA	2.17	0.45
1:B:169:LEU:C	1:B:171:LYS:H	2.20	0.45
1:C:165:LEU:HG	1:C:169:LEU:CD1	2.47	0.45
1:A:184:ARG:HG2	1:A:184:ARG:HH11	1.83	0.44
1:C:224:LEU:O	1:C:228:PRO:HG3	2.18	0.44
1:B:71:THR:CB	1:B:123:LYS:HD2	2.47	0.44
1:C:124:THR:HB	1:C:127:TYR:CZ	2.53	0.44
1:A:213:LEU:HD11	1:A:304:VAL:HG13	1.99	0.43
1:C:85:ALA:O	1:C:120:THR:HA	2.18	0.43
1:B:184:ARG:HG2	1:B:185:ASP:OD2	2.18	0.43

Continued on next page...

Continued from previous page...

Atom-1	Atom-2	Interatomic distance (Å)	Clash overlap (Å)
1:A:81:HIS:CE1	1:A:83:ASP:HB2	2.53	0.43
1:B:251:TYR:CZ	1:C:226:ARG:HD2	2.53	0.43
1:C:295:GLU:CB	1:C:296:PRO:HD3	2.48	0.43
1:A:160:ASP:O	1:A:163:GLN:HB3	2.17	0.43
1:B:88:GLU:OE1	1:B:88:GLU:HA	2.19	0.43
1:C:203:HIS:O	1:C:207:TRP:HD1	2.01	0.43
1:B:90:GLU:HG2	1:B:123:LYS:O	2.19	0.43
3:A:604:A3P:O4'	1:C:70:GLY:HA2	2.19	0.43
1:A:179:GLU:HB3	4:A:644:HOH:O	2.18	0.43
1:C:66:VAL:CG2	1:C:67:ARG:N	2.81	0.43
1:A:151:ARG:HA	4:A:628:HOH:O	2.19	0.43
3:A:603:A3P:C2	1:B:270:LEU:HD12	2.49	0.43
1:C:108:LEU:HG	1:C:108:LEU:O	2.19	0.42
1:A:256:LYS:HE2	4:A:631:HOH:O	2.18	0.42
1:C:286:LEU:O	1:C:289:LEU:HB2	2.19	0.42
1:C:213:LEU:HD21	1:C:304:VAL:O	2.19	0.42
1:C:164:VAL:HG11	1:C:175:TYR:CZ	2.55	0.42
1:A:293:PHE:C	1:A:296:PRO:HD2	2.40	0.42
1:B:152:ASP:HB3	1:B:155:GLU:HG3	2.01	0.42
1:B:134:PRO:HG3	1:B:207:TRP:CE2	2.54	0.41
1:C:170:GLN:HA	1:C:170:GLN:OE1	2.19	0.41
1:A:209:ARG:HG2	1:A:210:PHE:CD2	2.55	0.41
1:C:211:PHE:HA	1:C:212:PRO:HD3	1.78	0.41
1:A:165:LEU:O	1:A:169:LEU:CD1	2.68	0.41
1:C:135:GLU:CB	1:C:210:PHE:CZ	3.04	0.41
1:C:177:PRO:O	1:C:180:ASP:HB2	2.21	0.41
1:A:73:ALA:O	1:A:77:MET:HG3	2.21	0.41
1:B:150:LEU:O	1:B:221:GLY:N	2.52	0.41
1:A:135:GLU:HB2	1:A:210:PHE:CZ	2.56	0.41
1:A:151:ARG:O	1:A:152:ASP:C	2.59	0.41
1:A:56:GLN:O	1:A:108:LEU:HD11	2.21	0.41
1:B:152:ASP:HA	1:B:153:PRO:HD3	1.97	0.41
1:A:106:TRP:O	1:A:110:GLN:HG2	2.21	0.40
1:C:178:ILE:HG23	1:C:179:GLU:N	2.36	0.40
1:B:132:LYS:HG2	4:B:613:HOH:O	2.21	0.40
1:B:175:TYR:HA	1:B:176:PRO:HD3	1.88	0.40

All (1) symmetry-related close contacts are listed below. The label for Atom-2 includes the symmetry operator and encoded unit-cell translations to be applied.

Atom-1	Atom-2	Interatomic distance (Å)	Clash overlap (Å)
1:C:104:LEU:CD1	1:C:104:LEU:CD1[7_455]	1.74	0.46

5.3 Torsion angles [i](#)

5.3.1 Protein backbone [i](#)

In the following table, the Percentiles column shows the percent Ramachandran outliers of the chain as a percentile score with respect to all X-ray entries followed by that with respect to entries of similar resolution.

The Analysed column shows the number of residues for which the backbone conformation was analysed, and the total number of residues.

Mol	Chain	Analysed	Favoured	Allowed	Outliers	Percentiles	
1	A	256/285 (90%)	239 (93%)	16 (6%)	1 (0%)	39	61
1	B	256/285 (90%)	246 (96%)	9 (4%)	1 (0%)	39	61
1	C	243/285 (85%)	214 (88%)	26 (11%)	3 (1%)	16	29
All	All	755/855 (88%)	699 (93%)	51 (7%)	5 (1%)	26	46

All (5) Ramachandran outliers are listed below:

Mol	Chain	Res	Type
1	C	172	HIS
1	C	228	PRO
1	B	170	GLN
1	C	243	PRO
1	A	243	PRO

5.3.2 Protein sidechains [i](#)

In the following table, the Percentiles column shows the percent sidechain outliers of the chain as a percentile score with respect to all X-ray entries followed by that with respect to entries of similar resolution.

The Analysed column shows the number of residues for which the sidechain conformation was analysed, and the total number of residues.

Mol	Chain	Analysed	Rotameric	Outliers	Percentiles	
1	A	226/258 (88%)	226 (100%)	0	100	100
1	B	229/258 (89%)	229 (100%)	0	100	100

Continued on next page...

Continued from previous page...

Mol	Chain	Analysed	Rotameric	Outliers	Percentiles	
1	C	148/258 (57%)	147 (99%)	1 (1%)	88	97
All	All	603/774 (78%)	602 (100%)	1 (0%)	95	99

All (1) residues with a non-rotameric sidechain are listed below:

Mol	Chain	Res	Type
1	C	119	LEU

Some sidechains can be flipped to improve hydrogen bonding and reduce clashes. All (3) such sidechains are listed below:

Mol	Chain	Res	Type
1	A	311	HIS
1	C	201	HIS
1	C	311	HIS

5.3.3 RNA [i](#)

There are no RNA molecules in this entry.

5.4 Non-standard residues in protein, DNA, RNA chains [i](#)

There are no non-standard protein/DNA/RNA residues in this entry.

5.5 Carbohydrates [i](#)

There are no carbohydrates in this entry.

5.6 Ligand geometry [i](#)

5 ligands are modelled in this entry.

In the following table, the Counts columns list the number of bonds (or angles) for which Mogul statistics could be retrieved, the number of bonds (or angles) that are observed in the model and the number of bonds (or angles) that are defined in the chemical component dictionary. The Link column lists molecule types, if any, to which the group is linked. The Z score for a bond length (or angle) is the number of standard deviations the observed value is removed from the expected value. A bond length (or angle) with $|Z| > 2$ is considered an outlier worth inspection. RMSZ is the root-mean-square of all Z scores of the bond lengths (or angles).

Mol	Type	Chain	Res	Link	Bond lengths			Bond angles		
					Counts	RMSZ	# Z > 2	Counts	RMSZ	# Z > 2
2	SO4	A	601	-	4,4,4	0.25	0	6,6,6	0.07	0
3	A3P	A	602	-	24,29,29	0.70	0	28,45,45	0.91	1 (3%)
3	A3P	A	603	-	24,29,29	0.67	0	28,45,45	1.21	3 (10%)
3	A3P	A	604	-	24,29,29	0.57	0	28,45,45	1.06	0
2	SO4	B	602	-	4,4,4	0.26	0	6,6,6	0.08	0

In the following table, the Chirals column lists the number of chiral outliers, the number of chiral centers analysed, the number of these observed in the model and the number defined in the chemical component dictionary. Similar counts are reported in the Torsion and Rings columns. '-' means no outliers of that kind were identified.

Mol	Type	Chain	Res	Link	Chirals	Torsions	Rings
2	SO4	A	601	-	-	0/0/0/0	0/0/0/0
3	A3P	A	602	-	-	0/11/31/31	0/3/3/3
3	A3P	A	603	-	-	0/11/31/31	0/3/3/3
3	A3P	A	604	-	-	0/11/31/31	0/3/3/3
2	SO4	B	602	-	-	0/0/0/0	0/0/0/0

There are no bond length outliers.

All (4) bond angle outliers are listed below:

Mol	Chain	Res	Type	Atoms	Z	Observed(°)	Ideal(°)
3	A	603	A3P	C4'-O4'-C1'	-3.49	105.88	109.72
3	A	603	A3P	O5'-P2-O4P	-2.55	100.66	107.14
3	A	602	A3P	C4'-O4'-C1'	-2.18	107.32	109.72
3	A	603	A3P	O6P-P2-O4P	2.11	117.38	110.58

There are no chirality outliers.

There are no torsion outliers.

There are no ring outliers.

3 monomers are involved in 3 short contacts:

Mol	Chain	Res	Type	Clashes	Symm-Clashes
3	A	603	A3P	1	0
3	A	604	A3P	1	0
2	B	602	SO4	1	0

5.7 Other polymers

There are no such residues in this entry.

5.8 Polymer linkage issues

There are no chain breaks in this entry.

6 Fit of model and data ⓘ

6.1 Protein, DNA and RNA chains ⓘ

In the following table, the column labelled ‘#RSRZ> 2’ contains the number (and percentage) of RSRZ outliers, followed by percent RSRZ outliers for the chain as percentile scores relative to all X-ray entries and entries of similar resolution. The OWAB column contains the minimum, median, 95th percentile and maximum values of the occupancy-weighted average B-factor per residue. The column labelled ‘Q< 0.9’ lists the number of (and percentage) of residues with an average occupancy less than 0.9.

Mol	Chain	Analysed	<RSRZ>	#RSRZ>2	OWAB(Å ²)	Q<0.9
1	A	258/285 (90%)	-0.11	6 (2%) 64 67	24, 41, 70, 90	0
1	B	258/285 (90%)	-0.25	2 (0%) 87 89	22, 37, 63, 78	0
1	C	247/285 (86%)	1.51	79 (31%) 1 0	52, 106, 129, 135	0
All	All	763/855 (89%)	0.37	87 (11%) 7 6	22, 47, 124, 135	0

All (87) RSRZ outliers are listed below:

Mol	Chain	Res	Type	RSRZ
1	C	186	GLY	6.8
1	C	139	SER	5.7
1	C	264	SER	5.7
1	C	101	SER	5.3
1	C	188	LEU	5.2
1	C	183	MET	5.2
1	C	212	PRO	5.1
1	C	117	HIS	4.9
1	C	133	VAL	4.7
1	C	143	THR	4.6
1	C	99	HIS	4.6
1	C	263	ASP	4.5
1	C	96	TRP	4.5
1	C	58	LEU	4.4
1	C	211	PHE	4.3
1	C	100	TYR	4.3
1	C	169	LEU	4.2
1	C	200	TYR	4.1
1	C	265	GLY	4.1
1	C	102	GLN	4.0
1	C	269	CYS	4.0
1	C	104	LEU	4.0
1	C	210	PHE	3.9

Continued on next page...

Continued from previous page...

Mol	Chain	Res	Type	RSRZ
1	C	172	HIS	3.8
1	C	178	ILE	3.7
1	C	119	LEU	3.4
1	C	116	PRO	3.3
1	C	170	GLN	3.3
1	C	114	SER	3.3
1	C	304	VAL	3.3
1	C	59	PRO	3.2
1	C	266	LYS	3.2
1	C	145	ARG	3.1
1	C	144	ILE	2.9
1	C	132	LYS	2.9
1	A	278	HIS	2.9
1	C	305	GLY	2.9
1	C	199	LEU	2.8
1	C	110	GLN	2.8
1	C	166	TYR	2.8
1	C	185	ASP	2.7
1	C	140	MET	2.7
1	C	136	ARG	2.7
1	B	170	GLN	2.7
1	C	242	SER	2.6
1	C	195	LEU	2.6
1	C	215	HIS	2.6
1	C	86	ALA	2.6
1	C	142	PRO	2.5
1	C	85	ALA	2.5
1	A	166	TYR	2.5
1	A	170	GLN	2.5
1	C	239	LEU	2.5
1	C	103	GLY	2.5
1	C	261	LEU	2.4
1	C	95	ASP	2.4
1	C	293	PHE	2.4
1	C	66	VAL	2.4
1	A	265	GLY	2.4
1	C	258	PHE	2.3
1	C	311	HIS	2.3
1	C	300	PHE	2.3
1	B	166	TYR	2.3
1	C	106	TRP	2.3
1	C	82	PRO	2.3

Continued on next page...

Continued from previous page...

Mol	Chain	Res	Type	RSRZ
1	C	61	THR	2.2
1	C	92	HIS	2.2
1	C	118	GLN	2.2
1	C	84	VAL	2.2
1	C	115	SER	2.2
1	C	109	THR	2.2
1	C	54	SER	2.1
1	C	292	TYR	2.1
1	C	174	PRO	2.1
1	C	255	THR	2.1
1	C	130	SER	2.1
1	A	169	LEU	2.1
1	C	182	LEU	2.1
1	C	296	PRO	2.1
1	C	80	LEU	2.1
1	C	301	PHE	2.1
1	C	303	LEU	2.1
1	C	135	GLU	2.0
1	C	283	PRO	2.0
1	A	264	SER	2.0
1	C	55	THR	2.0
1	C	251	TYR	2.0

6.2 Non-standard residues in protein, DNA, RNA chains [i](#)

There are no non-standard protein/DNA/RNA residues in this entry.

6.3 Carbohydrates [i](#)

There are no carbohydrates in this entry.

6.4 Ligands [i](#)

In the following table, the Atoms column lists the number of modelled atoms in the group and the number defined in the chemical component dictionary. LLDF column lists the quality of electron density of the group with respect to its neighbouring residues in protein, DNA or RNA chains. The B-factors column lists the minimum, median, 95th percentile and maximum values of B factors of atoms in the group. The column labelled 'Q < 0.9' lists the number of atoms with occupancy less than 0.9.

Mol	Type	Chain	Res	Atoms	RSCC	RSR	LLDF	B-factors(\AA^2)	Q<0.9
3	A3P	A	603	27/27	0.98	0.14	-0.60	27,33,36,38	0
3	A3P	A	602	27/27	0.99	0.12	-0.82	27,31,35,38	0
3	A3P	A	604	27/27	0.94	0.13	-0.88	62,70,77,78	0
2	SO4	A	601	5/5	0.95	0.13	-	86,87,87,87	0
2	SO4	B	602	5/5	0.97	0.14	-	76,76,76,77	0

6.5 Other polymers [i](#)

There are no such residues in this entry.