



Full wwPDB X-ray Structure Validation Report ⓘ

Feb 1, 2016 – 06:00 AM GMT

PDB ID : 2VKM
Title : CRYSTAL STRUCTURE OF GRL-8234 BOUND TO BACE (BETA-SECRETASE)
Authors : Hong, L.; Tang, J.; Ghosh, A.K.
Deposited on : 2007-12-04
Resolution : 2.05 Å(reported)

This is a Full wwPDB X-ray Structure Validation Report for a publicly released PDB entry.
We welcome your comments at validation@mail.wwpdb.org
A user guide is available at
<http://wwpdb.org/validation/2016/XrayValidationReportHelp>
with specific help available everywhere you see the ⓘ symbol.

The following versions of software and data (see [references ⓘ](#)) were used in the production of this report:

MolProbity : 4.02b-467
Mogul : 1.7 (RC4), CSD as536be (2015)
Xtriage (Phenix) : 1.9-1692
EDS : rb-20026688
Percentile statistics : 20151230.v01 (using entries in the PDB archive December 30th 2015)
Refmac : 5.8.0135
CCP4 : 6.5.0
Ideal geometry (proteins) : Engh & Huber (2001)
Ideal geometry (DNA, RNA) : Parkinson et al. (1996)
Validation Pipeline (wwPDB-VP) : trunk26865

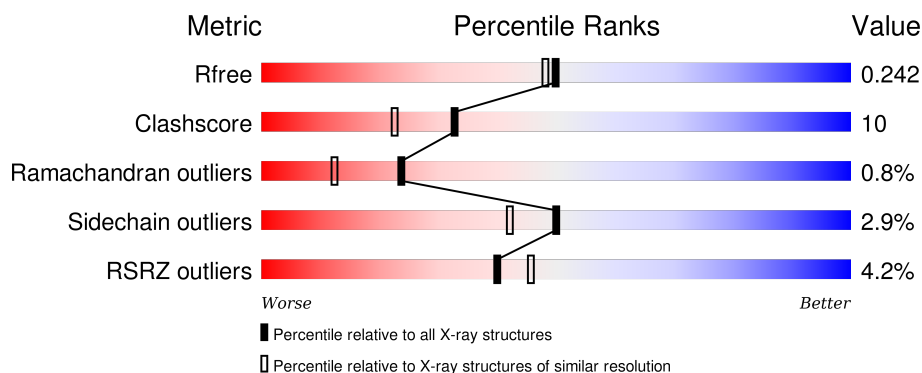
1 Overall quality at a glance

The following experimental techniques were used to determine the structure:

X-RAY DIFFRACTION

The reported resolution of this entry is 2.05 Å.

Percentile scores (ranging between 0-100) for global validation metrics of the entry are shown in the following graphic. The table shows the number of entries on which the scores are based.



Metric	Whole archive (#Entries)	Similar resolution (#Entries, resolution range(Å))
R_{free}	91344	1192 (2.04-2.04)
Clashscore	102246	1269 (2.04-2.04)
Ramachandran outliers	100387	1258 (2.04-2.04)
Sidechain outliers	100360	1258 (2.04-2.04)
RSRZ outliers	91569	1194 (2.04-2.04)

The table below summarises the geometric issues observed across the polymeric chains and their fit to the electron density. The red, orange, yellow and green segments on the lower bar indicate the fraction of residues that contain outliers for ≥ 3 , 2, 1 and 0 types of geometric quality criteria. A grey segment represents the fraction of residues that are not modelled. The numeric value for each fraction is indicated below the corresponding segment, with a dot representing fractions $\leq 5\%$. The upper red bar (where present) indicates the fraction of residues that have poor fit to the electron density. The numeric value is given above the bar.

Mol	Chain	Length	Quality of chain
1	A	389	<div> <div>4%</div> <div>82%</div> <div>15%</div> <div>•</div> </div>
1	B	389	<div> <div>5%</div> <div>81%</div> <div>16%</div> <div>•</div> </div>
1	C	389	<div> <div>3%</div> <div>85%</div> <div>12%</div> <div>•</div> </div>
1	D	389	<div> <div>5%</div> <div>84%</div> <div>13%</div> <div>•</div> </div>

2 Entry composition [i](#)

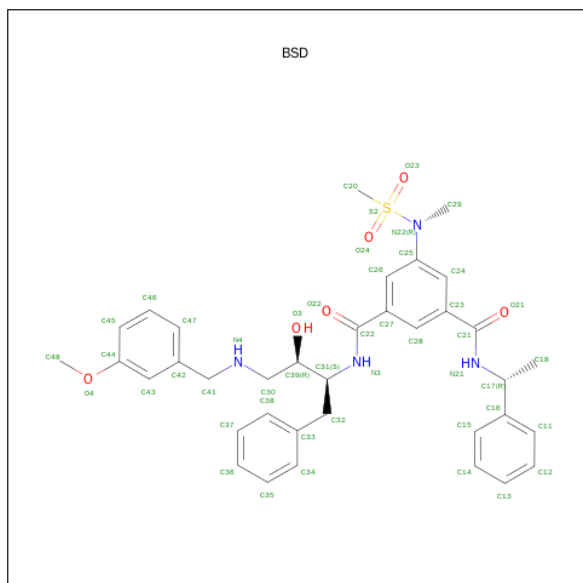
There are 3 unique types of molecules in this entry. The entry contains 13184 atoms, of which 0 are hydrogens and 0 are deuteriums.

In the tables below, the ZeroOcc column contains the number of atoms modelled with zero occupancy, the AltConf column contains the number of residues with at least one atom in alternate conformation and the Trace column contains the number of residues modelled with at most 2 atoms.

- Molecule 1 is a protein called BETA-SECRETASE 1.

Mol	Chain	Residues	Atoms					ZeroOcc	AltConf	Trace
1	A	389	Total	C	N	O	S	0	0	0
			3053	1953	507	579	14			
1	B	389	Total	C	N	O	S	0	0	0
			3053	1953	507	579	14			
1	C	389	Total	C	N	O	S	0	0	0
			3053	1953	507	579	14			
1	D	389	Total	C	N	O	S	0	0	0
			3053	1953	507	579	14			

- Molecule 2 is N-{(1S,2R)-1-BENZYL-2-HYDROXY-3-[(3-METHOXYBENZYL)AMINO]PROPYL}-5-[METHYL(METHYLSULFONYL)AMINO]-N'-[(1R)-1-PHENYLETHYL]BENZENE-1,3-DICARBOXAMIDE (three-letter code: BSD) (formula: C₃₆H₄₂N₄O₆S).



Mol	Chain	Residues	Atoms					ZeroOcc	AltConf
2	A	1	Total	C	N	O	S	0	0
			47	36	4	6	1		

Continued on next page...

Continued from previous page...

Mol	Chain	Residues	Atoms					ZeroOcc	AltConf
2	B	1	Total	C	N	O	S	0	0
			47	36	4	6	1		
2	C	1	Total	C	N	O	S	0	0
			47	36	4	6	1		
2	D	1	Total	C	N	O	S	0	0
			47	36	4	6	1		

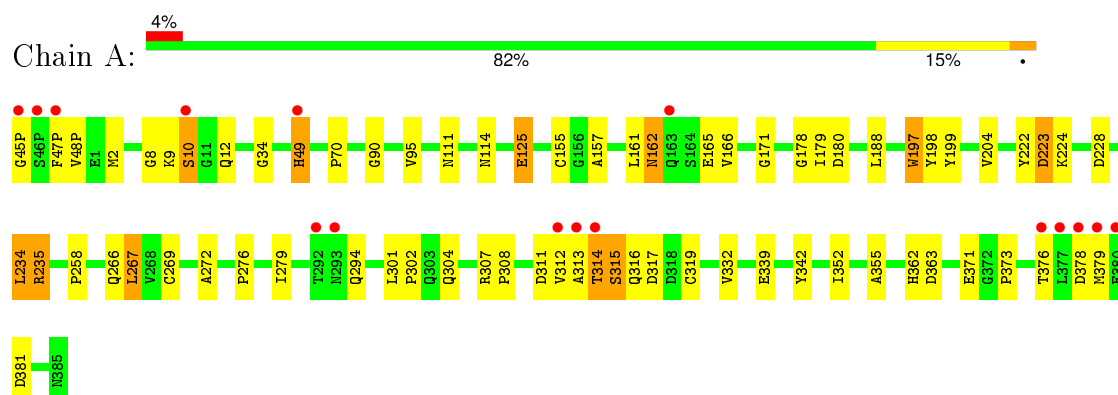
- Molecule 3 is water.

Mol	Chain	Residues	Atoms		ZeroOcc	AltConf
3	A	175	Total	O	0	0
			175	175		
3	B	204	Total	O	0	0
			204	204		
3	C	225	Total	O	0	0
			225	225		
3	D	180	Total	O	0	0
			180	180		

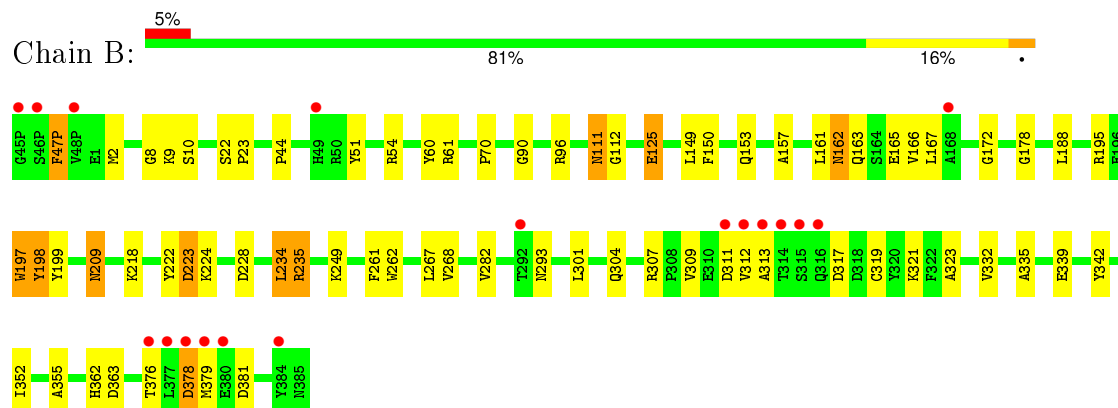
3 Residue-property plots

These plots are drawn for all protein, RNA and DNA chains in the entry. The first graphic for a chain summarises the proportions of errors displayed in the second graphic. The second graphic shows the sequence view annotated by issues in geometry and electron density. Residues are color-coded according to the number of geometric quality criteria for which they contain at least one outlier: green = 0, yellow = 1, orange = 2 and red = 3 or more. A red dot above a residue indicates a poor fit to the electron density ($RSRZ > 2$). Stretches of 2 or more consecutive residues without any outlier are shown as a green connector. Residues present in the sample, but not in the model, are shown in grey.

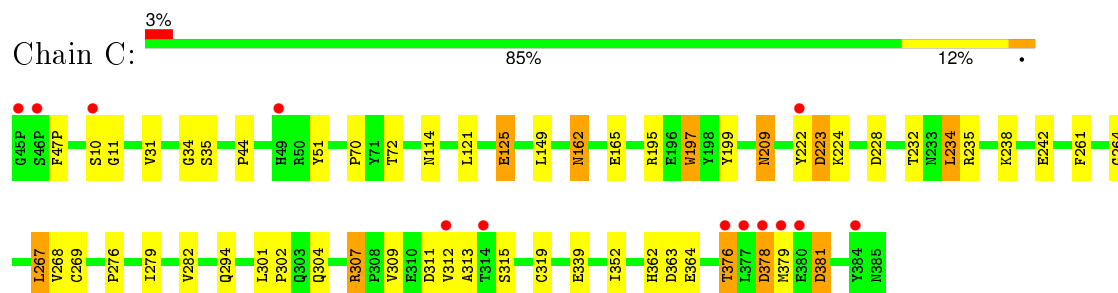
• Molecule 1: BETA-SECRETASE 1



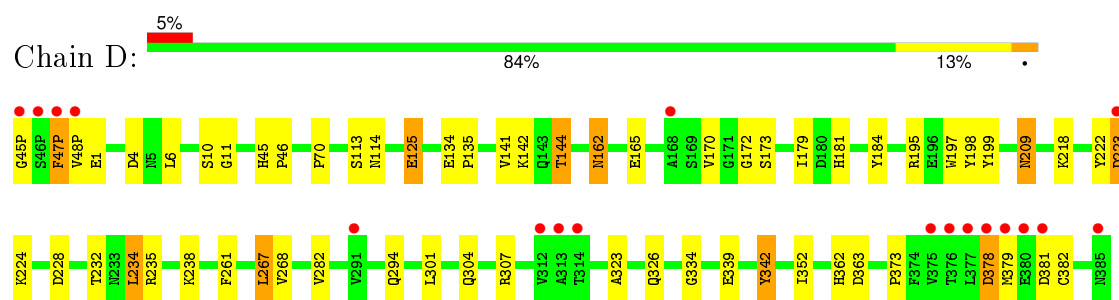
• Molecule 1: BETA-SECRETASE 1



• Molecule 1: BETA-SECRETASE 1



• Molecule 1: BETA-SECRETASE 1



4 Data and refinement statistics

Property	Value	Source
Space group	P 1 21 1	Depositor
Cell constants a, b, c, α , β , γ	86.70Å 130.31Å 87.71Å 90.00° 97.41° 90.00°	Depositor
Resolution (Å)	50.00 – 2.05 46.20 – 2.05	Depositor EDS
% Data completeness (in resolution range)	94.3 (50.00-2.05) 94.2 (46.20-2.05)	Depositor EDS
R_{merge}	0.07	Depositor
R_{sym}	(Not available)	Depositor
$\langle I/\sigma(I) \rangle$ ¹	2.82 (at 2.05Å)	Xtriage
Refinement program	CNS 1.0	Depositor
R, R_{free}	0.202 , 0.242 0.201 , 0.242	Depositor DCC
R_{free} test set	9155 reflections (8.04%)	DCC
Wilson B-factor (Å ²)	25.2	Xtriage
Anisotropy	0.413	Xtriage
Bulk solvent k_{sol} (e/Å ³), B_{sol} (Å ²)	0.38 , 54.0	EDS
Estimated twinning fraction	0.014 for l,-k,h	Xtriage
L-test for twinning ²	$\langle L \rangle = 0.50$, $\langle L^2 \rangle = 0.33$	Xtriage
Outliers	0 of 119967 reflections	Xtriage
F_o, F_c correlation	0.95	EDS
Total number of atoms	13184	wwPDB-VP
Average B, all atoms (Å ²)	29.0	wwPDB-VP

Xtriage's analysis on translational NCS is as follows: *The analyses of the Patterson function reveals a significant off-origin peak that is 41.75 % of the origin peak, indicating pseudo translational symmetry. The chance of finding a peak of this or larger height randomly in a structure without pseudo translational symmetry is equal to 2.2539e-04. The detected translational NCS is most likely also responsible for the elevated intensity ratio.*

¹ Intensities estimated from amplitudes.

² Theoretical values of $\langle |L| \rangle$, $\langle L^2 \rangle$ for acentric reflections are 0.5, 0.375 respectively for untwinned datasets, and 0.333, 0.2 for perfectly twinned datasets.

5 Model quality

5.1 Standard geometry

Bond lengths and bond angles in the following residue types are not validated in this section: BSD

The Z score for a bond length (or angle) is the number of standard deviations the observed value is removed from the expected value. A bond length (or angle) with $|Z| > 5$ is considered an outlier worth inspection. RMSZ is the root-mean-square of all Z scores of the bond lengths (or angles).

Mol	Chain	Bond lengths		Bond angles	
		RMSZ	$\# Z > 5$	RMSZ	$\# Z > 5$
1	A	0.47	0/3131	0.73	3/4256 (0.1%)
1	B	0.48	0/3131	0.74	4/4256 (0.1%)
1	C	0.51	0/3131	0.75	1/4256 (0.0%)
1	D	0.48	0/3131	0.75	4/4256 (0.1%)
All	All	0.48	0/12524	0.74	12/17024 (0.1%)

There are no bond length outliers.

All (12) bond angle outliers are listed below:

Mol	Chain	Res	Type	Atoms	Z	Observed(°)	Ideal(°)
1	A	234	LEU	N-CA-C	-6.20	94.26	111.00
1	B	234	LEU	N-CA-C	-6.08	94.59	111.00
1	B	235	ARG	NE-CZ-NH1	-6.04	117.28	120.30
1	D	234	LEU	N-CA-C	-5.93	95.00	111.00
1	C	234	LEU	N-CA-C	-5.75	95.47	111.00
1	A	235	ARG	NE-CZ-NH1	-5.54	117.53	120.30
1	D	144	THR	N-CA-C	-5.50	96.16	111.00
1	D	342	TYR	N-CA-C	-5.44	96.31	111.00
1	B	342	TYR	N-CA-C	-5.39	96.45	111.00
1	D	198	TYR	N-CA-C	-5.39	96.46	111.00
1	B	198	TYR	N-CA-C	-5.37	96.50	111.00
1	A	198	TYR	N-CA-C	-5.36	96.52	111.00

There are no chirality outliers.

There are no planarity outliers.

5.2 Too-close contacts ⓘ

In the following table, the Non-H and H(model) columns list the number of non-hydrogen atoms and hydrogen atoms in the chain respectively. The H(added) column lists the number of hydrogen atoms added and optimized by MolProbity. The Clashes column lists the number of clashes within the asymmetric unit, whereas Symm-Clashes lists symmetry related clashes.

Mol	Chain	Non-H	H(model)	H(added)	Clashes	Symm-Clashes
1	A	3053	0	2965	66	0
1	B	3053	0	2965	64	0
1	C	3053	0	2965	55	0
1	D	3053	0	2965	57	0
2	A	47	0	42	4	0
2	B	47	0	42	3	0
2	C	47	0	42	8	0
2	D	47	0	42	4	0
3	A	175	0	0	12	0
3	B	204	0	0	3	0
3	C	225	0	0	5	0
3	D	180	0	0	6	0
All	All	13184	0	12028	242	0

The all-atom clashscore is defined as the number of clashes found per 1000 atoms (including hydrogen atoms). The all-atom clashscore for this structure is 10.

All (242) close contacts within the same asymmetric unit are listed below, sorted by their clash magnitude.

Atom-1	Atom-2	Interatomic distance (Å)	Clash overlap (Å)
1:A:162:ASN:ND2	1:A:165:GLU:HG3	1.80	0.97
1:C:232:THR:HG23	1:C:307:ARG:HH21	1.32	0.92
1:A:311:ASP:HB2	1:A:319:CYS:SG	2.13	0.88
1:C:235:ARG:HD3	2:C:1386:BSD:O23	1.74	0.87
1:A:312:VAL:HG23	1:A:313:ALA:H	1.42	0.85
1:D:378:ASP:O	1:D:381:ASP:HB2	1.77	0.84
1:A:162:ASN:C	1:A:162:ASN:HD22	1.83	0.82
1:B:188:LEU:HD23	1:B:355:ALA:HB2	1.64	0.80
1:C:307:ARG:HD3	3:C:2184:HOH:O	1.82	0.77
1:D:235:ARG:HD3	2:D:1386:BSD:O23	1.83	0.77
1:D:307:ARG:NH1	3:D:2151:HOH:O	2.17	0.77
1:B:267:LEU:HD23	1:B:321:LYS:HD3	1.68	0.75
1:A:301:LEU:H	1:A:304:GLN:HE21	1.34	0.75
1:D:301:LEU:H	1:D:304:GLN:HE21	1.34	0.74
1:A:235:ARG:HD3	2:A:1386:BSD:O23	1.86	0.74

Continued on next page...

Continued from previous page...

Atom-1	Atom-2	Interatomic distance (Å)	Clash overlap (Å)
1:C:378:ASP:O	1:C:381:ASP:HB2	1.88	0.74
1:D:162:ASN:HD22	1:D:162:ASN:C	1.92	0.74
1:B:267:LEU:CD2	1:B:309:VAL:HG21	2.18	0.73
1:A:12:GLN:HA	3:A:2007:HOH:O	1.88	0.73
1:C:162:ASN:ND2	1:C:165:GLU:HG3	2.05	0.72
1:B:235:ARG:HD3	2:B:1386:BSD:O23	1.89	0.71
1:A:171:GLY:HA2	3:A:2072:HOH:O	1.91	0.71
1:C:301:LEU:H	1:C:304:GLN:HE21	1.38	0.70
1:B:267:LEU:HD22	1:B:309:VAL:HG21	1.73	0.69
1:D:228:ASP:OD2	2:D:1386:BSD:H301	1.93	0.69
1:A:313:ALA:O	1:A:315:SER:N	2.25	0.69
1:D:232:THR:HG23	1:D:307:ARG:HH21	1.57	0.68
1:C:162:ASN:ND2	1:C:165:GLU:H	1.92	0.68
1:A:8:GLY:HA2	3:A:2059:HOH:O	1.93	0.68
1:C:162:ASN:HD22	1:C:162:ASN:C	1.97	0.68
1:A:312:VAL:HG23	1:A:313:ALA:N	2.10	0.66
1:D:301:LEU:H	1:D:304:GLN:NE2	1.93	0.66
1:B:8:GLY:HA2	3:B:2076:HOH:O	1.94	0.65
1:B:162:ASN:C	1:B:162:ASN:HD22	2.00	0.65
1:A:301:LEU:H	1:A:304:GLN:NE2	1.95	0.65
1:B:362:HIS:HD2	1:B:363:ASP:O	1.80	0.65
1:D:162:ASN:HD21	1:D:165:GLU:HG3	1.62	0.64
1:B:312:VAL:HG23	1:B:313:ALA:H	1.62	0.64
1:D:4:ASP:H	1:D:173:SER:HB3	1.63	0.64
1:D:162:ASN:ND2	1:D:165:GLU:HG3	2.12	0.63
1:D:162:ASN:ND2	1:D:165:GLU:H	1.96	0.63
1:A:155:CYS:HB2	3:A:2072:HOH:O	1.97	0.63
1:A:9:LYS:HB2	3:A:2078:HOH:O	1.99	0.63
1:A:10:SER:HB2	1:A:161:LEU:HG	1.79	0.62
1:B:301:LEU:H	1:B:304:GLN:NE2	1.97	0.62
1:C:269:CYS:HG	1:C:319:CYS:CB	2.12	0.62
1:A:272:ALA:HB2	1:A:316:GLN:O	1.99	0.62
1:A:235:ARG:HD2	3:A:2149:HOH:O	1.98	0.62
1:B:125:GLU:HG2	1:B:197:TRP:HB2	1.81	0.61
1:B:311:ASP:HB2	1:B:319:CYS:SG	2.41	0.61
1:B:301:LEU:H	1:B:304:GLN:HE21	1.49	0.60
1:C:238:LYS:O	1:C:242:GLU:HG2	2.00	0.60
1:A:314:THR:O	1:A:315:SER:O	2.20	0.60
1:B:261:PHE:CD1	1:B:268:VAL:HG23	2.37	0.60
1:B:218:LYS:HG3	1:B:381:ASP:O	2.02	0.60
1:D:125:GLU:HG3	1:D:125:GLU:O	2.02	0.60

Continued on next page...

Continued from previous page...

Atom-1	Atom-2	Interatomic distance (Å)	Clash overlap (Å)
1:B:125:GLU:OE1	1:B:195:ARG:NH1	2.35	0.60
1:B:209:ASN:ND2	1:B:282:VAL:H	2.00	0.59
1:D:6:LEU:HG	1:D:173:SER:HA	1.85	0.59
1:C:376:THR:HG23	3:C:2221:HOH:O	2.00	0.59
1:D:261:PHE:CD1	1:D:268:VAL:HG23	2.38	0.58
1:A:362:HIS:HD2	1:A:363:ASP:O	1.86	0.58
1:A:162:ASN:HD21	1:A:165:GLU:HG3	1.66	0.58
1:D:307:ARG:CD	3:D:2151:HOH:O	2.51	0.58
1:A:228:ASP:OD2	2:A:1386:BSD:H301	2.03	0.58
1:B:228:ASP:OD2	2:B:1386:BSD:H301	2.04	0.58
1:C:301:LEU:H	1:C:304:GLN:NE2	2.01	0.58
1:A:228:ASP:OD2	2:A:1386:BSD:C30	2.52	0.58
1:A:162:ASN:ND2	1:A:165:GLU:H	2.02	0.58
1:B:47(P):PHE:CZ	1:B:178:GLY:HA3	2.38	0.58
1:B:209:ASN:HD22	1:B:282:VAL:HG22	1.70	0.57
1:A:307:ARG:NH2	1:A:339:GLU:OE1	2.37	0.57
1:C:362:HIS:HD2	1:C:363:ASP:O	1.88	0.57
1:D:4:ASP:N	1:D:173:SER:HB3	2.19	0.56
1:B:222:TYR:O	1:B:223:ASP:HB3	2.05	0.56
1:C:114:ASN:HB2	3:C:2105:HOH:O	2.04	0.56
1:D:222:TYR:O	1:D:223:ASP:CB	2.53	0.56
1:C:261:PHE:CD1	1:C:268:VAL:HG23	2.40	0.56
1:C:162:ASN:HD21	1:C:165:GLU:HG3	1.69	0.56
1:C:267:LEU:CD2	1:C:267:LEU:H	2.18	0.56
1:A:9:LYS:HD2	3:A:2078:HOH:O	2.05	0.56
1:D:181:HIS:HA	1:D:184:TYR:CE1	2.41	0.56
1:A:222:TYR:O	1:A:223:ASP:CB	2.54	0.55
1:C:72:THR:HG21	1:C:235:ARG:NH1	2.21	0.55
1:C:209:ASN:HD22	1:C:282:VAL:HG22	1.70	0.55
1:B:378:ASP:HB3	1:B:381:ASP:OD2	2.06	0.55
1:D:141:VAL:O	1:D:144:THR:O	2.25	0.55
1:C:307:ARG:NH1	1:C:339:GLU:OE1	2.31	0.55
1:C:222:TYR:O	1:C:223:ASP:CB	2.55	0.55
1:B:162:ASN:ND2	1:B:165:GLU:H	2.05	0.55
1:A:166:VAL:HG12	3:A:2010:HOH:O	2.07	0.54
1:C:10:SER:HB3	1:C:307:ARG:NH1	2.22	0.54
1:A:125:GLU:HG2	1:A:197:TRP:CB	2.38	0.54
1:C:11:GLY:C	2:C:1386:BSD:H11	2.29	0.54
1:A:9:LYS:HG3	3:A:2072:HOH:O	2.08	0.54
1:B:228:ASP:OD2	2:B:1386:BSD:C30	2.57	0.53
1:A:162:ASN:C	1:A:162:ASN:ND2	2.57	0.53

Continued on next page...

Continued from previous page...

Atom-1	Atom-2	Interatomic distance (Å)	Clash overlap (Å)
1:D:294:GLN:HG2	1:D:373:PRO:HB2	1.91	0.53
1:A:222:TYR:O	1:A:223:ASP:HB3	2.09	0.52
1:B:2:MET:HG2	1:B:90:GLY:HA2	1.91	0.52
1:C:228:ASP:OD2	2:C:1386:BSD:C30	2.57	0.52
1:A:49:HIS:N	1:A:49:HIS:ND1	2.56	0.52
1:C:125:GLU:O	1:C:125:GLU:HG3	2.09	0.52
1:B:307:ARG:NH2	1:B:339:GLU:OE1	2.42	0.52
1:D:267:LEU:H	1:D:267:LEU:CD2	2.24	0.51
1:D:218:LYS:HG3	1:D:381:ASP:O	2.10	0.51
1:D:162:ASN:ND2	1:D:162:ASN:C	2.63	0.51
1:A:2:MET:HG2	1:A:90:GLY:HA2	1.92	0.51
1:C:294:GLN:N	1:C:379:MET:HE1	2.25	0.51
1:C:10:SER:CB	1:C:307:ARG:NH1	2.74	0.50
1:A:10:SER:HB2	1:A:161:LEU:CG	2.40	0.50
1:A:235:ARG:HB2	1:A:332:VAL:HB	1.94	0.50
1:A:276:PRO:O	1:A:279:ILE:HG12	2.11	0.50
1:C:209:ASN:ND2	1:C:282:VAL:H	2.09	0.50
1:C:11:GLY:H	2:C:1386:BSD:H12	1.76	0.50
1:B:249:LYS:HE2	1:B:262:TRP:CD1	2.47	0.50
1:B:307:ARG:NE	3:B:2176:HOH:O	2.45	0.50
1:D:209:ASN:HD22	1:D:282:VAL:HG22	1.77	0.50
1:A:315:SER:C	1:A:317:ASP:H	2.15	0.50
1:B:235:ARG:HB2	1:B:332:VAL:HB	1.94	0.49
1:D:238:LYS:HD2	1:D:326:GLN:NE2	2.27	0.49
1:A:267:LEU:CD2	1:A:267:LEU:H	2.24	0.49
1:A:12:GLN:HG3	3:A:2007:HOH:O	2.12	0.49
1:C:223:ASP:OD1	1:C:224:LYS:NZ	2.41	0.49
1:D:379:MET:HA	1:D:382:CYS:SG	2.52	0.49
1:D:307:ARG:HG2	1:D:323:ALA:HB2	1.94	0.49
1:B:149:LEU:HD23	1:B:150:PHE:N	2.27	0.49
1:B:9:LYS:HE2	1:B:157:ALA:HB2	1.93	0.49
1:C:267:LEU:HD23	1:C:267:LEU:H	1.78	0.49
1:B:188:LEU:HD23	1:B:355:ALA:CB	2.40	0.48
1:B:125:GLU:O	1:B:125:GLU:HG3	2.12	0.48
1:D:209:ASN:ND2	1:D:282:VAL:H	2.11	0.48
1:B:312:VAL:HG23	1:B:313:ALA:N	2.28	0.48
1:A:34:GLY:HA3	2:A:1386:BSD:H302	1.95	0.48
1:C:125:GLU:OE1	1:C:195:ARG:NH1	2.46	0.48
1:B:293:ASN:HA	1:B:379:MET:CE	2.44	0.48
1:B:163:GLN:O	1:B:167:LEU:HG	2.13	0.48
1:C:199:TYR:HB3	1:C:352:ILE:HD11	1.95	0.48

Continued on next page...

Continued from previous page...

Atom-1	Atom-2	Interatomic distance (Å)	Clash overlap (Å)
1:D:142:LYS:HE3	3:D:2077:HOH:O	2.13	0.48
1:A:125:GLU:HG2	1:A:197:TRP:HB2	1.95	0.48
1:C:264:GLY:HA3	3:C:2194:HOH:O	2.14	0.48
1:D:125:GLU:OE1	1:D:195:ARG:NH1	2.46	0.48
1:D:307:ARG:HD3	3:D:2151:HOH:O	2.13	0.47
1:A:269:CYS:HG	1:A:319:CYS:CB	2.22	0.47
1:C:125:GLU:HG2	1:C:197:TRP:HB2	1.96	0.47
1:D:11:GLY:C	2:D:1386:BSD:H11	2.35	0.47
1:D:45:HIS:CG	1:D:46:PRO:HD2	2.49	0.47
1:C:376:THR:HB	1:C:379:MET:SD	2.55	0.47
1:D:228:ASP:OD2	2:D:1386:BSD:C30	2.61	0.47
1:A:307:ARG:NE	3:A:2144:HOH:O	2.48	0.47
1:A:307:ARG:HA	1:A:308:PRO:HD3	1.70	0.47
1:D:10:SER:HB3	1:D:307:ARG:NH1	2.30	0.47
1:A:314:THR:O	1:A:315:SER:C	2.52	0.46
1:C:312:VAL:HG23	1:C:313:ALA:N	2.30	0.46
1:B:199:TYR:HB3	1:B:352:ILE:HD11	1.97	0.46
1:B:125:GLU:HG2	1:B:197:TRP:CB	2.45	0.46
1:B:307:ARG:HD2	1:B:323:ALA:CB	2.45	0.46
1:D:179:ILE:HG23	1:D:342:TYR:HE2	1.81	0.46
1:C:162:ASN:HD22	1:C:165:GLU:H	1.63	0.46
1:A:301:LEU:HB3	1:A:302:PRO:HD2	1.96	0.46
1:C:307:ARG:NH1	3:C:2184:HOH:O	2.48	0.46
1:C:47(P):PHE:CD1	1:C:47(P):PHE:N	2.84	0.46
1:D:223:ASP:HB2	3:D:2114:HOH:O	2.16	0.46
1:C:301:LEU:HB3	1:C:302:PRO:HD2	1.97	0.46
1:B:222:TYR:O	1:B:223:ASP:CB	2.63	0.46
1:C:311:ASP:OD2	1:C:315:SER:OG	2.34	0.46
1:B:223:ASP:OD1	1:B:224:LYS:NZ	2.44	0.45
1:A:204:VAL:HG11	1:A:379:MET:HB3	1.99	0.45
1:A:125:GLU:HG2	1:A:197:TRP:HB3	1.98	0.45
1:D:45(P):GLY:HA2	1:D:181:HIS:CD2	2.52	0.45
1:C:34:GLY:O	2:C:1386:BSD:H43	2.17	0.45
1:C:222:TYR:O	1:C:223:ASP:HB3	2.16	0.45
1:A:258:PRO:HG3	1:A:266:GLN:NE2	2.32	0.45
1:B:311:ASP:OD1	1:B:312:VAL:HG22	2.17	0.45
1:B:267:LEU:HD22	1:B:309:VAL:CG2	2.45	0.45
1:B:209:ASN:HD22	1:B:209:ASN:HA	1.59	0.45
1:C:11:GLY:H	1:C:307:ARG:NH2	2.14	0.45
1:A:313:ALA:C	1:A:315:SER:H	2.19	0.45
1:A:315:SER:OG	1:A:317:ASP:HB2	2.17	0.45

Continued on next page...

Continued from previous page...

Atom-1	Atom-2	Interatomic distance (Å)	Clash overlap (Å)
1:A:166:VAL:HG11	3:A:2059:HOH:O	2.17	0.44
1:D:47(P):PHE:CD1	1:D:47(P):PHE:N	2.86	0.44
1:D:134:GLU:HA	1:D:135:PRO:HD3	1.88	0.44
1:D:222:TYR:O	1:D:223:ASP:HB3	2.18	0.44
1:A:47(P):PHE:CZ	1:A:178:GLY:HA3	2.52	0.44
1:D:235:ARG:HD2	3:D:2159:HOH:O	2.17	0.44
1:C:31:VAL:HG13	1:C:121:LEU:CD1	2.48	0.44
1:C:162:ASN:ND2	1:C:162:ASN:C	2.70	0.44
1:D:223:ASP:OD1	1:D:224:LYS:HG2	2.17	0.44
1:B:261:PHE:CD1	1:B:268:VAL:CG2	3.00	0.44
1:A:294:GLN:CG	1:A:373:PRO:HB2	2.48	0.43
1:C:364:GLU:HG2	1:C:364:GLU:O	2.18	0.43
1:C:35:SER:HB3	2:C:1386:BSD:O3	2.19	0.43
1:C:267:LEU:HD12	1:C:309:VAL:HG23	1.99	0.43
1:B:149:LEU:HD23	1:B:149:LEU:C	2.39	0.43
1:A:313:ALA:C	1:A:315:SER:N	2.71	0.43
1:A:199:TYR:HB3	1:A:352:ILE:HD11	1.99	0.43
1:B:47(P):PHE:CD1	1:B:47(P):PHE:N	2.87	0.43
1:C:44:PRO:HD3	1:C:51:TYR:CZ	2.54	0.43
1:A:223:ASP:OD1	1:A:224:LYS:NZ	2.47	0.42
1:A:179:ILE:HG23	1:A:342:TYR:HE2	1.84	0.42
1:B:161:LEU:HB2	1:B:166:VAL:HG22	2.00	0.42
1:A:47(P):PHE:HD2	1:A:2:MET:CE	2.32	0.42
1:B:10:SER:HB2	1:B:161:LEU:HG	2.00	0.42
1:C:11:GLY:N	2:C:1386:BSD:H12	2.34	0.42
1:A:125:GLU:HB3	1:A:197:TRP:HA	2.00	0.42
1:D:228:ASP:O	1:D:334:GLY:HA2	2.19	0.42
1:A:9:LYS:HG2	1:A:157:ALA:HB2	2.01	0.42
1:B:70:PRO:HG2	1:B:70:PRO:O	2.19	0.42
1:A:188:LEU:HD23	1:A:355:ALA:HB2	2.01	0.42
1:B:162:ASN:ND2	1:B:162:ASN:C	2.71	0.42
1:D:294:GLN:CG	1:D:373:PRO:HB2	2.50	0.42
1:B:44:PRO:HD3	1:B:51:TYR:CZ	2.55	0.42
1:B:61:ARG:HD2	1:B:96:ARG:NH1	2.35	0.42
1:A:315:SER:C	1:A:317:ASP:N	2.73	0.42
1:D:48(P):VAL:HG23	1:D:1:GLU:N	2.34	0.41
1:D:113:SER:O	1:D:114:ASN:HB2	2.19	0.41
1:A:45(P):GLY:O	1:A:180:ASP:HA	2.20	0.41
1:D:307:ARG:NH1	1:D:339:GLU:OE1	2.43	0.41
1:B:335:ALA:O	1:B:339:GLU:HG3	2.20	0.41
1:B:9:LYS:HG2	1:B:157:ALA:HB2	2.01	0.41

Continued on next page...

Continued from previous page...

Atom-1	Atom-2	Interatomic distance (Å)	Clash overlap (Å)
1:B:111:ASN:HD22	1:B:112:GLY:N	2.19	0.41
1:B:362:HIS:CD2	1:B:363:ASP:O	2.67	0.41
1:D:362:HIS:HD2	1:D:363:ASP:O	2.03	0.41
1:C:276:PRO:O	1:C:279:ILE:HG12	2.20	0.41
1:D:11:GLY:H	1:D:307:ARG:NH2	2.19	0.41
1:D:261:PHE:CD1	1:D:268:VAL:CG2	3.03	0.41
1:C:267:LEU:HD12	1:C:309:VAL:CG2	2.50	0.41
1:D:10:SER:CB	1:D:307:ARG:NH1	2.83	0.41
1:D:209:ASN:HA	1:D:209:ASN:HD22	1.66	0.41
1:A:378:ASP:O	1:A:381:ASP:HB2	2.21	0.41
1:C:228:ASP:OD2	2:C:1386:BSD:H301	2.21	0.41
1:A:125:GLU:HG3	1:A:125:GLU:O	2.20	0.41
1:B:161:LEU:HB2	1:B:166:VAL:CG2	2.50	0.41
1:D:1:GLU:HG2	1:D:1:GLU:H	1.68	0.41
1:B:54:ARG:HD2	1:B:60:TYR:CZ	2.56	0.41
1:B:22:SER:HA	1:B:23:PRO:C	2.41	0.41
1:B:317:ASP:N	3:B:2179:HOH:O	2.53	0.41
1:B:188:LEU:CD2	1:B:355:ALA:HB2	2.42	0.40
1:B:153:GLN:O	1:B:172:GLY:HA3	2.21	0.40
1:D:199:TYR:HB3	1:D:352:ILE:HD11	2.03	0.40
1:D:170:VAL:HG12	1:D:172:GLY:H	1.85	0.40
1:B:197:TRP:CG	1:B:198:TYR:N	2.89	0.40

There are no symmetry-related clashes.

5.3 Torsion angles ⓘ

5.3.1 Protein backbone ⓘ

In the following table, the Percentiles column shows the percent Ramachandran outliers of the chain as a percentile score with respect to all X-ray entries followed by that with respect to entries of similar resolution.

The Analysed column shows the number of residues for which the backbone conformation was analysed, and the total number of residues.

Mol	Chain	Analysed	Favoured	Allowed	Outliers	Percentiles	
1	A	387/389 (100%)	368 (95%)	15 (4%)	4 (1%)	19	8
1	B	387/389 (100%)	371 (96%)	14 (4%)	2 (0%)	34	22
1	C	387/389 (100%)	376 (97%)	8 (2%)	3 (1%)	24	12

Continued on next page...

Continued from previous page...

Mol	Chain	Analysed	Favoured	Allowed	Outliers	Percentiles	
1	D	387/389 (100%)	373 (96%)	11 (3%)	3 (1%)	24	12
All	All	1548/1556 (100%)	1488 (96%)	48 (3%)	12 (1%)	24	12

All (12) Ramachandran outliers are listed below:

Mol	Chain	Res	Type
1	A	223	ASP
1	A	314	THR
1	A	315	SER
1	B	223	ASP
1	C	223	ASP
1	D	223	ASP
1	D	378	ASP
1	B	378	ASP
1	C	378	ASP
1	C	70	PRO
1	D	70	PRO
1	A	70	PRO

5.3.2 Protein sidechains ⓘ

In the following table, the Percentiles column shows the percent sidechain outliers of the chain as a percentile score with respect to all X-ray entries followed by that with respect to entries of similar resolution.

The Analysed column shows the number of residues for which the sidechain conformation was analysed, and the total number of residues.

Mol	Chain	Analysed	Rotameric	Outliers	Percentiles	
1	A	331/331 (100%)	318 (96%)	13 (4%)	39	30
1	B	331/331 (100%)	323 (98%)	8 (2%)	57	50
1	C	331/331 (100%)	321 (97%)	10 (3%)	48	41
1	D	331/331 (100%)	324 (98%)	7 (2%)	61	56
All	All	1324/1324 (100%)	1286 (97%)	38 (3%)	50	42

All (38) residues with a non-rotameric sidechain are listed below:

Mol	Chain	Res	Type
1	A	48(P)	VAL
1	A	10	SER

Continued on next page...

Continued from previous page...

Mol	Chain	Res	Type
1	A	49	HIS
1	A	95	VAL
1	A	111	ASN
1	A	114	ASN
1	A	125	GLU
1	A	162	ASN
1	A	197	TRP
1	A	234	LEU
1	A	267	LEU
1	A	371	GLU
1	A	376	THR
1	B	47(P)	PHE
1	B	111	ASN
1	B	125	GLU
1	B	162	ASN
1	B	197	TRP
1	B	209	ASN
1	B	234	LEU
1	B	376	THR
1	C	125	GLU
1	C	149	LEU
1	C	162	ASN
1	C	197	TRP
1	C	209	ASN
1	C	234	LEU
1	C	267	LEU
1	C	307	ARG
1	C	376	THR
1	C	381	ASP
1	D	47(P)	PHE
1	D	125	GLU
1	D	162	ASN
1	D	197	TRP
1	D	209	ASN
1	D	234	LEU
1	D	267	LEU

Some sidechains can be flipped to improve hydrogen bonding and reduce clashes. All (32) such sidechains are listed below:

Mol	Chain	Res	Type
1	A	28	ASN
1	A	111	ASN

Continued on next page...

Continued from previous page...

Mol	Chain	Res	Type
1	A	162	ASN
1	A	266	GLN
1	A	304	GLN
1	A	362	HIS
1	B	28	ASN
1	B	89	HIS
1	B	111	ASN
1	B	114	ASN
1	B	162	ASN
1	B	209	ASN
1	B	294	GLN
1	B	304	GLN
1	B	362	HIS
1	C	28	ASN
1	C	73	GLN
1	C	92	ASN
1	C	111	ASN
1	C	162	ASN
1	C	209	ASN
1	C	266	GLN
1	C	304	GLN
1	C	362	HIS
1	D	28	ASN
1	D	111	ASN
1	D	162	ASN
1	D	209	ASN
1	D	211	GLN
1	D	304	GLN
1	D	326	GLN
1	D	362	HIS

5.3.3 RNA ⓘ

There are no RNA molecules in this entry.

5.4 Non-standard residues in protein, DNA, RNA chains ⓘ

There are no non-standard protein/DNA/RNA residues in this entry.

5.5 Carbohydrates [i](#)

There are no carbohydrates in this entry.

5.6 Ligand geometry [i](#)

4 ligands are modelled in this entry.

In the following table, the Counts columns list the number of bonds (or angles) for which Mogul statistics could be retrieved, the number of bonds (or angles) that are observed in the model and the number of bonds (or angles) that are defined in the chemical component dictionary. The Link column lists molecule types, if any, to which the group is linked. The Z score for a bond length (or angle) is the number of standard deviations the observed value is removed from the expected value. A bond length (or angle) with $|Z| > 2$ is considered an outlier worth inspection. RMSZ is the root-mean-square of all Z scores of the bond lengths (or angles).

Mol	Type	Chain	Res	Link	Bond lengths			Bond angles		
					Counts	RMSZ	$\# Z > 2$	Counts	RMSZ	$\# Z > 2$
2	BSD	A	1386	-	49,50,50	3.14	13 (26%)	63,69,69	1.76	10 (15%)
2	BSD	B	1386	-	49,50,50	3.06	11 (22%)	63,69,69	1.76	11 (17%)
2	BSD	C	1386	-	49,50,50	2.98	11 (22%)	63,69,69	1.84	10 (15%)
2	BSD	D	1386	-	49,50,50	3.15	9 (18%)	63,69,69	1.90	10 (15%)

In the following table, the Chirals column lists the number of chiral outliers, the number of chiral centers analysed, the number of these observed in the model and the number defined in the chemical component dictionary. Similar counts are reported in the Torsion and Rings columns. '-' means no outliers of that kind were identified.

Mol	Type	Chain	Res	Link	Chirals	Torsions	Rings
2	BSD	A	1386	-	-	0/46/46/46	0/4/4/4
2	BSD	B	1386	-	-	0/46/46/46	0/4/4/4
2	BSD	C	1386	-	-	0/46/46/46	0/4/4/4
2	BSD	D	1386	-	-	0/46/46/46	0/4/4/4

All (44) bond length outliers are listed below:

Mol	Chain	Res	Type	Atoms	Z	Observed(Å)	Ideal(Å)
2	A	1386	BSD	C45-C44	2.04	1.42	1.38
2	A	1386	BSD	C35-C34	2.05	1.43	1.38
2	C	1386	BSD	C46-C47	2.05	1.43	1.38
2	A	1386	BSD	C37-C36	2.06	1.43	1.38
2	A	1386	BSD	C38-C33	2.07	1.43	1.38
2	B	1386	BSD	C13-C12	2.07	1.43	1.38

Continued on next page...

Continued from previous page...

Mol	Chain	Res	Type	Atoms	Z	Observed(Å)	Ideal(Å)
2	D	1386	BSD	O22-C22	2.09	1.27	1.23
2	D	1386	BSD	C31-N3	2.09	1.50	1.46
2	D	1386	BSD	C45-C44	2.14	1.42	1.38
2	C	1386	BSD	C34-C33	2.15	1.43	1.38
2	C	1386	BSD	C46-C45	2.17	1.43	1.38
2	D	1386	BSD	C20-S2	2.22	1.79	1.75
2	C	1386	BSD	C20-S2	2.23	1.79	1.75
2	B	1386	BSD	C24-C25	2.30	1.43	1.39
2	B	1386	BSD	C14-C15	2.33	1.43	1.38
2	B	1386	BSD	C11-C16	2.33	1.42	1.39
2	C	1386	BSD	C47-C42	2.38	1.43	1.38
2	B	1386	BSD	C20-S2	2.45	1.80	1.75
2	D	1386	BSD	C24-C25	2.59	1.44	1.39
2	C	1386	BSD	C24-C23	2.68	1.43	1.39
2	A	1386	BSD	C20-S2	2.69	1.80	1.75
2	A	1386	BSD	C31-N3	2.73	1.51	1.46
2	A	1386	BSD	C26-C27	2.73	1.43	1.39
2	A	1386	BSD	C15-C16	3.03	1.44	1.39
2	B	1386	BSD	C24-C23	3.08	1.44	1.39
2	C	1386	BSD	C15-C16	3.15	1.44	1.39
2	B	1386	BSD	C31-N3	3.16	1.51	1.46
2	A	1386	BSD	C24-C25	3.20	1.45	1.39
2	C	1386	BSD	C31-N3	3.22	1.52	1.46
2	A	1386	BSD	C24-C23	3.25	1.44	1.39
2	D	1386	BSD	C15-C16	3.57	1.44	1.39
2	B	1386	BSD	C15-C16	3.96	1.45	1.39
2	A	1386	BSD	S2-N22	5.11	1.77	1.65
2	B	1386	BSD	S2-N22	5.30	1.77	1.65
2	D	1386	BSD	S2-N22	5.38	1.77	1.65
2	C	1386	BSD	S2-N22	5.81	1.78	1.65
2	C	1386	BSD	O23-S2	10.37	1.54	1.43
2	D	1386	BSD	O23-S2	11.56	1.56	1.43
2	A	1386	BSD	O23-S2	11.68	1.56	1.43
2	B	1386	BSD	O23-S2	11.69	1.56	1.43
2	B	1386	BSD	O24-S2	12.84	1.57	1.43
2	C	1386	BSD	O24-S2	13.48	1.58	1.43
2	A	1386	BSD	O24-S2	13.72	1.58	1.43
2	D	1386	BSD	O24-S2	14.66	1.59	1.43

All (41) bond angle outliers are listed below:

Continued on next page...

Continued from previous page...

Mol	Chain	Res	Type	Atoms	Z	Observed(°)	Ideal(°)
-----	-------	-----	------	-------	---	-------------	----------

Mol	Chain	Res	Type	Atoms	Z	Observed(°)	Ideal(°)
2	C	1386	BSD	O24-S2-O23	-8.03	107.49	118.66
2	B	1386	BSD	O24-S2-O23	-7.60	108.09	118.66
2	D	1386	BSD	O24-S2-O23	-7.38	108.39	118.66
2	A	1386	BSD	O24-S2-O23	-7.33	108.47	118.66
2	D	1386	BSD	C32-C31-C39	-3.81	104.32	111.57
2	A	1386	BSD	C32-C31-C39	-3.46	104.97	111.57
2	C	1386	BSD	C32-C31-C39	-3.30	105.30	111.57
2	B	1386	BSD	O23-S2-C20	-3.03	104.50	108.70
2	B	1386	BSD	C32-C31-C39	-2.97	105.92	111.57
2	C	1386	BSD	C32-C31-N3	-2.78	107.10	110.14
2	A	1386	BSD	O23-S2-C20	-2.28	105.54	108.70
2	D	1386	BSD	O23-S2-C20	-2.24	105.60	108.70
2	D	1386	BSD	C32-C31-N3	-2.22	107.71	110.14
2	C	1386	BSD	C42-C41-N4	-2.07	107.73	112.88
2	A	1386	BSD	C27-C28-C23	2.03	122.70	120.47
2	C	1386	BSD	C27-C28-C23	2.07	122.74	120.47
2	B	1386	BSD	C27-C28-C23	2.31	123.00	120.47
2	B	1386	BSD	C39-C31-N3	2.34	113.50	109.73
2	C	1386	BSD	C30-C39-C31	2.38	116.31	111.97
2	B	1386	BSD	C30-C39-C31	2.45	116.44	111.97
2	B	1386	BSD	C27-C26-C25	2.49	122.32	119.70
2	A	1386	BSD	C48-O4-C44	2.52	123.42	117.51
2	A	1386	BSD	O23-S2-N22	2.53	110.22	106.94
2	B	1386	BSD	O23-S2-N22	2.55	110.25	106.94
2	D	1386	BSD	C27-C26-C25	2.60	122.43	119.70
2	B	1386	BSD	C48-O4-C44	2.72	123.87	117.51
2	A	1386	BSD	C30-C39-C31	2.84	117.16	111.97
2	D	1386	BSD	C48-O4-C44	2.97	124.47	117.51
2	A	1386	BSD	C39-C31-N3	2.97	114.52	109.73
2	D	1386	BSD	C39-C31-N3	2.99	114.54	109.73
2	C	1386	BSD	C39-C31-N3	3.06	114.65	109.73
2	C	1386	BSD	C48-O4-C44	3.22	125.04	117.51
2	D	1386	BSD	C30-C39-C31	3.63	118.59	111.97
2	C	1386	BSD	C33-C32-C31	3.76	119.47	113.48
2	A	1386	BSD	O24-S2-N22	4.60	112.90	106.94
2	B	1386	BSD	O24-S2-N22	4.77	113.13	106.94
2	B	1386	BSD	C33-C32-C31	4.86	121.22	113.48
2	A	1386	BSD	C33-C32-C31	4.92	121.31	113.48
2	D	1386	BSD	O24-S2-N22	5.43	113.98	106.94
2	D	1386	BSD	C33-C32-C31	5.86	122.81	113.48
2	C	1386	BSD	O24-S2-N22	6.05	114.79	106.94

There are no chirality outliers.

There are no torsion outliers.

There are no ring outliers.

4 monomers are involved in 19 short contacts:

Mol	Chain	Res	Type	Clashes	Symm-Clashes
2	A	1386	BSD	4	0
2	B	1386	BSD	3	0
2	C	1386	BSD	8	0
2	D	1386	BSD	4	0

5.7 Other polymers [i](#)

There are no such residues in this entry.

5.8 Polymer linkage issues [i](#)

There are no chain breaks in this entry.

6 Fit of model and data ⓘ

6.1 Protein, DNA and RNA chains ⓘ

In the following table, the column labelled ‘#RSRZ> 2’ contains the number (and percentage) of RSRZ outliers, followed by percent RSRZ outliers for the chain as percentile scores relative to all X-ray entries and entries of similar resolution. The OWAB column contains the minimum, median, 95th percentile and maximum values of the occupancy-weighted average B-factor per residue. The column labelled ‘Q< 0.9’ lists the number of (and percentage) of residues with an average occupancy less than 0.9.

Mol	Chain	Analysed	<RSRZ>	#RSRZ>2			OWAB(Å ²)	Q<0.9
1	A	389/389 (100%)	-0.00	16 (4%)	41	47	17, 28, 48, 72	0
1	B	389/389 (100%)	0.07	18 (4%)	36	41	16, 27, 51, 73	0
1	C	389/389 (100%)	-0.04	13 (3%)	50	57	15, 24, 45, 68	0
1	D	389/389 (100%)	0.10	18 (4%)	36	41	16, 26, 47, 74	0
All	All	1556/1556 (100%)	0.03	65 (4%)	40	46	15, 26, 48, 74	0

All (65) RSRZ outliers are listed below:

Mol	Chain	Res	Type	RSRZ
1	D	312	VAL	14.1
1	B	312	VAL	7.5
1	A	314	THR	7.2
1	B	314	THR	6.8
1	D	46(P)	SER	6.7
1	A	313	ALA	6.2
1	B	46(P)	SER	6.2
1	C	312	VAL	6.1
1	B	313	ALA	6.0
1	C	45(P)	GLY	5.6
1	B	311	ASP	5.5
1	D	378	ASP	5.5
1	B	377	LEU	5.4
1	D	380	GLU	5.3
1	B	45(P)	GLY	5.3
1	A	312	VAL	5.2
1	C	376	THR	5.1
1	D	376	THR	5.1
1	B	378	ASP	4.9
1	D	379	MET	4.9
1	D	314	THR	4.8

Continued on next page...

Continued from previous page...

Mol	Chain	Res	Type	RSRZ
1	A	377	LEU	4.7
1	A	378	ASP	4.7
1	D	377	LEU	4.4
1	B	380	GLU	4.4
1	B	376	THR	4.3
1	C	46(P)	SER	4.3
1	C	380	GLU	4.3
1	D	45(P)	GLY	4.1
1	C	378	ASP	4.1
1	C	379	MET	4.0
1	D	313	ALA	4.0
1	A	46(P)	SER	3.9
1	A	376	THR	3.8
1	C	314	THR	3.8
1	D	168	ALA	3.7
1	A	380	GLU	3.5
1	D	381	ASP	3.4
1	A	45(P)	GLY	3.4
1	B	48(P)	VAL	3.3
1	C	49	HIS	3.2
1	D	48(P)	VAL	3.2
1	C	377	LEU	3.2
1	A	10	SER	3.1
1	B	379	MET	3.0
1	A	163	GLN	2.8
1	D	375	VAL	2.8
1	D	47(P)	PHE	2.7
1	A	293	ASN	2.7
1	C	384	TYR	2.7
1	B	316	GLN	2.6
1	A	49	HIS	2.6
1	C	222	TYR	2.5
1	A	379	MET	2.5
1	A	292	THR	2.5
1	A	47(P)	PHE	2.4
1	B	168	ALA	2.3
1	B	49	HIS	2.3
1	B	292	THR	2.3
1	B	315	SER	2.3
1	D	223	ASP	2.2
1	B	384	TYR	2.2
1	D	291	VAL	2.2

Continued on next page...

Continued from previous page...

Mol	Chain	Res	Type	RSRZ
1	D	385	ASN	2.1
1	C	10	SER	2.0

6.2 Non-standard residues in protein, DNA, RNA chains [i](#)

There are no non-standard protein/DNA/RNA residues in this entry.

6.3 Carbohydrates [i](#)

There are no carbohydrates in this entry.

6.4 Ligands [i](#)

In the following table, the Atoms column lists the number of modelled atoms in the group and the number defined in the chemical component dictionary. LLDF column lists the quality of electron density of the group with respect to its neighbouring residues in protein, DNA or RNA chains. The B-factors column lists the minimum, median, 95th percentile and maximum values of B factors of atoms in the group. The column labelled 'Q< 0.9' lists the number of atoms with occupancy less than 0.9.

Mol	Type	Chain	Res	Atoms	RSCC	RSR	LLDF	B-factors(Å ²)	Q<0.9
2	BSD	A	1386	47/47	0.95	0.14	1.24	18,22,26,31	0
2	BSD	B	1386	47/47	0.95	0.13	0.97	18,22,31,32	0
2	BSD	D	1386	47/47	0.96	0.14	0.46	16,21,27,29	0
2	BSD	C	1386	47/47	0.96	0.14	0.43	15,22,25,29	0

6.5 Other polymers [i](#)

There are no such residues in this entry.