



# Full wwPDB X-ray Structure Validation Report ⓘ

Feb 1, 2016 – 06:01 AM GMT

PDB ID : 2VNU  
Title : CRYSTAL STRUCTURE OF SC RRP44  
Authors : Lorentzen, E.; Basquin, J.; Conti, E.  
Deposited on : 2008-02-07  
Resolution : 2.30 Å(reported)

This is a Full wwPDB X-ray Structure Validation Report for a publicly released PDB entry.  
We welcome your comments at [validation@mail.wwpdb.org](mailto:validation@mail.wwpdb.org)  
A user guide is available at  
<http://wwpdb.org/validation/2016/XrayValidationReportHelp>  
with specific help available everywhere you see the ⓘ symbol.

---

The following versions of software and data (see [references ⓘ](#)) were used in the production of this report:

MolProbity : 4.02b-467  
Mogul : 1.7 (RC4), CSD as536be (2015)  
Xtriage (Phenix) : 1.9-1692  
EDS : rb-20026688  
Percentile statistics : 20151230.v01 (using entries in the PDB archive December 30th 2015)  
Refmac : 5.8.0135  
CCP4 : 6.5.0  
Ideal geometry (proteins) : Engh & Huber (2001)  
Ideal geometry (DNA, RNA) : Parkinson et al. (1996)  
Validation Pipeline (wwPDB-VP) : trunk26865

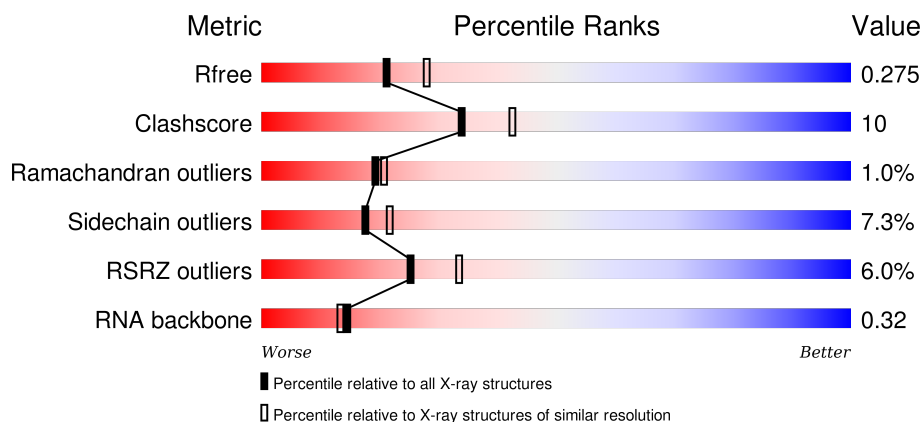
# 1 Overall quality at a glance

The following experimental techniques were used to determine the structure:

## *X-RAY DIFFRACTION*

The reported resolution of this entry is 2.30 Å.

Percentile scores (ranging between 0-100) for global validation metrics of the entry are shown in the following graphic. The table shows the number of entries on which the scores are based.



Metric	Whole archive (#Entries)	Similar resolution (#Entries, resolution range(Å))
$R_{free}$	91344	3852 (2.30-2.30)
Clashscore	102246	4452 (2.30-2.30)
Ramachandran outliers	100387	4410 (2.30-2.30)
Sidechain outliers	100360	4409 (2.30-2.30)
RSRZ outliers	91569	3857 (2.30-2.30)
RNA backbone	2183	1011 (2.84-1.76)

The table below summarises the geometric issues observed across the polymeric chains and their fit to the electron density. The red, orange, yellow and green segments on the lower bar indicate the fraction of residues that contain outliers for  $\geq 3$ , 2, 1 and 0 types of geometric quality criteria. A grey segment represents the fraction of residues that are not modelled. The numeric value for each fraction is indicated below the corresponding segment, with a dot representing fractions  $\leq 5\%$ . The upper red bar (where present) indicates the fraction of residues that have poor fit to the electron density. The numeric value is given above the bar.

Mol	Chain	Length	Quality of chain
1	B	10	
2	D	760	

The following table lists non-polymeric compounds, carbohydrate monomers and non-standard residues in protein, DNA, RNA chains that are outliers for geometric or electron-density-fit criteria:

Mol	Type	Chain	Res	Chirality	Geometry	Clashes	Electron density
5	1PE	D	1502	-	-	X	-

## 2 Entry composition

There are 6 unique types of molecules in this entry. The entry contains 6091 atoms, of which 0 are hydrogens and 0 are deuteriums.

In the tables below, the ZeroOcc column contains the number of atoms modelled with zero occupancy, the AltConf column contains the number of residues with at least one atom in alternate conformation and the Trace column contains the number of residues modelled with at most 2 atoms.

- Molecule 1 is a RNA chain called 5'-R(\*AP\*AP\*AP\*AP\*AP\*AP\*AP\*AP\*AP)-3'.

Mol	Chain	Residues	Atoms					ZeroOcc	AltConf	Trace
1	B	10	Total	C	N	O	P	0	0	1
			199	90	45	55	9			

- Molecule 2 is a protein called EXOSOME COMPLEX EXONUCLEASE RRP44.

Mol	Chain	Residues	Atoms						ZeroOcc	AltConf	Trace
2	D	694	Total	C	N	O	S	Se	0	7	0
			5424	3453	937	1007	9	18			

There is a discrepancy between the modelled and reference sequences:

Chain	Residue	Modelled	Actual	Comment	Reference
D	551	ASN	ASP	ENGINEERED MUTATION	UNP Q08162

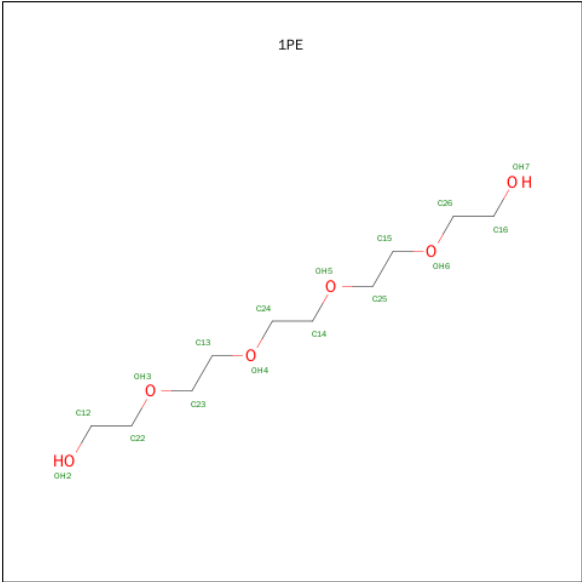
- Molecule 3 is MAGNESIUM ION (three-letter code: MG) (formula: Mg).

Mol	Chain	Residues	Atoms		ZeroOcc	AltConf
3	D	1	Total	Mg	0	0
			1	1		

- Molecule 4 is SODIUM ION (three-letter code: NA) (formula: Na).

Mol	Chain	Residues	Atoms		ZeroOcc	AltConf
4	D	1	Total	Na	0	0
			1	1		

- Molecule 5 is PENTAETHYLENE GLYCOL (three-letter code: 1PE) (formula: C<sub>10</sub>H<sub>22</sub>O<sub>6</sub>).



Mol	Chain	Residues	Atoms			ZeroOcc	AltConf
5	D	1	Total	C	O	0	0
			16	10	6		

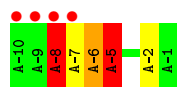
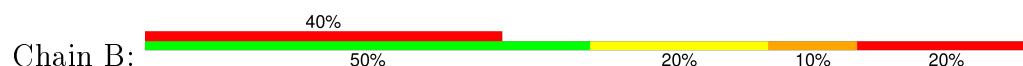
- Molecule 6 is water.

Mol	Chain	Residues	Atoms		ZeroOcc	AltConf
6	B	18	Total	O	0	0
			18	18		
6	D	432	Total	O	0	0
			432	432		

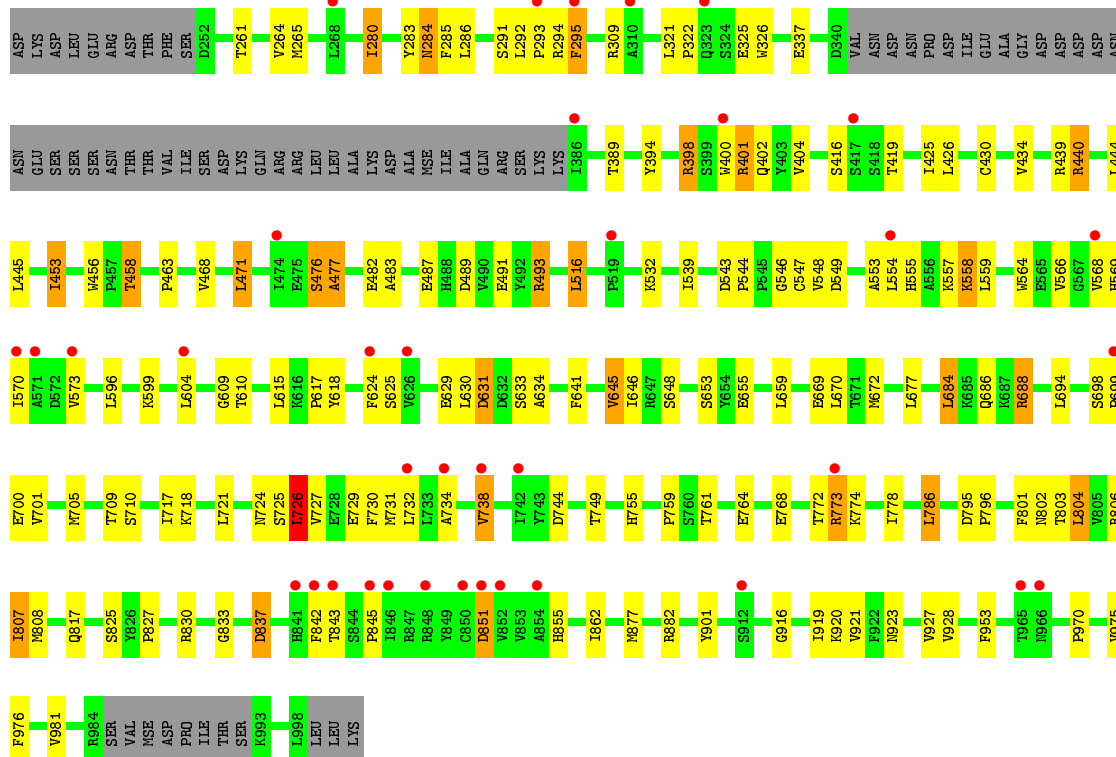
### 3 Residue-property plots

These plots are drawn for all protein, RNA and DNA chains in the entry. The first graphic for a chain summarises the proportions of errors displayed in the second graphic. The second graphic shows the sequence view annotated by issues in geometry and electron density. Residues are color-coded according to the number of geometric quality criteria for which they contain at least one outlier: green = 0, yellow = 1, orange = 2 and red = 3 or more. A red dot above a residue indicates a poor fit to the electron density ( $RSRZ > 2$ ). Stretches of 2 or more consecutive residues without any outlier are shown as a green connector. Residues present in the sample, but not in the model, are shown in grey.

- Molecule 1: 5'-R(\*AP\*AP\*AP\*AP\*AP\*AP\*AP\*AP\*AP)-3'



- Molecule 2: EXOSOME COMPLEX EXONUCLEASE RRP44



## 4 Data and refinement statistics

Property	Value	Source
Space group	P 21 21 21	Depositor
Cell constants a, b, c, $\alpha$ , $\beta$ , $\gamma$	72.35Å 87.25Å 136.27Å 90.00° 90.00° 90.00°	Depositor
Resolution (Å)	29.06 – 2.30 29.06 – 2.30	Depositor EDS
% Data completeness (in resolution range)	100.0 (29.06-2.30) 99.8 (29.06-2.30)	Depositor EDS
$R_{merge}$	0.13	Depositor
$R_{sym}$	(Not available)	Depositor
$\langle I/\sigma(I) \rangle$ <sup>1</sup>	2.35 (at 2.31Å)	Xtriage
Refinement program	REFMAC 5.2.0019	Depositor
R, $R_{free}$	0.217 , 0.278 0.216 , 0.275	Depositor DCC
$R_{free}$ test set	1168 reflections (3.09%)	DCC
Wilson B-factor (Å <sup>2</sup> )	30.8	Xtriage
Anisotropy	0.227	Xtriage
Bulk solvent $k_{sol}$ (e/Å <sup>3</sup> ), $B_{sol}$ (Å <sup>2</sup> )	0.31 , 29.1	EDS
Estimated twinning fraction	No twinning to report.	Xtriage
L-test for twinning <sup>2</sup>	$\langle  L  \rangle = 0.47$ , $\langle L^2 \rangle = 0.30$	Xtriage
Outliers	0 of 38913 reflections	Xtriage
$F_o, F_c$ correlation	0.92	EDS
Total number of atoms	6091	wwPDB-VP
Average B, all atoms (Å <sup>2</sup> )	16.0	wwPDB-VP

Xtriage's analysis on translational NCS is as follows: *The largest off-origin peak in the Patterson function is 3.50% of the height of the origin peak. No significant pseudotranslation is detected.*

<sup>1</sup>Intensities estimated from amplitudes.

<sup>2</sup>Theoretical values of  $\langle |L| \rangle$ ,  $\langle L^2 \rangle$  for acentric reflections are 0.5, 0.375 respectively for untwinned datasets, and 0.333, 0.2 for perfectly twinned datasets.

## 5 Model quality [i](#)

### 5.1 Standard geometry [i](#)

Bond lengths and bond angles in the following residue types are not validated in this section: NA, MG, 1PE

The Z score for a bond length (or angle) is the number of standard deviations the observed value is removed from the expected value. A bond length (or angle) with  $|Z| > 5$  is considered an outlier worth inspection. RMSZ is the root-mean-square of all Z scores of the bond lengths (or angles).

Mol	Chain	Bond lengths		Bond angles	
		RMSZ	$\# Z  > 5$	RMSZ	$\# Z  > 5$
1	B	0.88	0/225	1.84	8/350 (2.3%)
2	D	0.53	1/5540 (0.0%)	0.69	2/7499 (0.0%)
All	All	0.54	1/5765 (0.0%)	0.78	10/7849 (0.1%)

All (1) bond length outliers are listed below:

Mol	Chain	Res	Type	Atoms	Z	Observed(Å)	Ideal(Å)
2	D	322	PRO	C-N	-6.68	1.18	1.34

All (10) bond angle outliers are listed below:

Mol	Chain	Res	Type	Atoms	Z	Observed(°)	Ideal(°)
1	B	-8	A	P-O3'-C3'	11.78	133.83	119.70
1	B	-6	A	OP1-P-O3'	-9.80	83.63	105.20
1	B	-6	A	O3'-P-O5'	-8.63	87.61	104.00
1	B	-5	A	O5'-P-OP1	8.39	120.77	110.70
2	D	726	LEU	CA-CB-CG	6.98	131.35	115.30
1	B	-5	A	C5'-C4'-O4'	-6.60	101.18	109.10
1	B	-5	A	O4'-C1'-N9	6.26	113.21	108.20
2	D	688	ARG	NE-CZ-NH1	-5.77	117.41	120.30
1	B	-6	A	OP2-P-O3'	-5.54	93.00	105.20
1	B	-5	A	OP1-P-OP2	5.14	127.31	119.60

There are no chirality outliers.

There are no planarity outliers.



## 5.2 Too-close contacts ⓘ

In the following table, the Non-H and H(model) columns list the number of non-hydrogen atoms and hydrogen atoms in the chain respectively. The H(added) column lists the number of hydrogen atoms added and optimized by MolProbity. The Clashes column lists the number of clashes within the asymmetric unit, whereas Symm-Clashes lists symmetry related clashes.

Mol	Chain	Non-H	H(model)	H(added)	Clashes	Symm-Clashes
1	B	199	0	100	4	0
2	D	5424	0	5329	110	0
3	D	1	0	0	0	0
4	D	1	0	0	0	0
5	D	16	0	22	9	0
6	B	18	0	0	0	0
6	D	432	0	0	18	0
All	All	6091	0	5451	112	0

The all-atom clashscore is defined as the number of clashes found per 1000 atoms (including hydrogen atoms). The all-atom clashscore for this structure is 10.

All (112) close contacts within the same asymmetric unit are listed below, sorted by their clash magnitude.

Atom-1	Atom-2	Interatomic distance (Å)	Clash overlap (Å)
2:D:928:VAL:HB	6:D:2396:HOH:O	1.69	0.91
2:D:688:ARG:NH1	6:D:2256:HOH:O	2.02	0.89
2:D:837:ASP:HB3	6:D:2346:HOH:O	1.72	0.89
2:D:280:ILE:HD13	2:D:285:PHE:HA	1.65	0.79
2:D:634:ALA:HB1	2:D:684:LEU:HD13	1.65	0.78
2:D:453[A]:ILE:HD12	2:D:463:PRO:HB2	1.65	0.77
2:D:802:ASN:OD1	2:D:806:ARG:NH2	2.16	0.77
2:D:458:THR:HG21	6:D:2084:HOH:O	1.84	0.76
1:B:-5:A:H5'	1:B:-5:A:H8	1.51	0.76
2:D:292:LEU:O	2:D:294:ARG:O	2.06	0.74
2:D:734:ALA:O	2:D:738:VAL:HG13	1.88	0.72
2:D:755:HIS:HD2	2:D:833:GLY:H	1.36	0.72
2:D:804:LEU:HD21	2:D:919:ILE:HG22	1.72	0.71
2:D:564:TRP:CZ2	5:D:1502:1PE:H242	2.28	0.68
1:B:-5:A:H5'	1:B:-5:A:C8	2.29	0.68
2:D:916:GLY:HA3	6:D:2396:HOH:O	1.93	0.67
2:D:699:PRO:HB2	2:D:717:ILE:HG22	1.76	0.66
2:D:755:HIS:CD2	2:D:833:GLY:H	2.13	0.65
2:D:672:MSE:HE2	5:D:1502:1PE:H221	1.79	0.64
2:D:901:TYR:O	6:D:2393:HOH:O	2.15	0.63

*Continued on next page...*

*Continued from previous page...*

Atom-1	Atom-2	Interatomic distance (Å)	Clash overlap (Å)
2:D:773[A]:ARG:NH2	6:D:2313:HOH:O	2.32	0.62
2:D:718:LYS:NZ	6:D:2276:HOH:O	2.32	0.62
2:D:609:GLY:HA3	6:D:2211:HOH:O	2.01	0.60
2:D:721:LEU:H	2:D:724:ASN:HD22	1.49	0.59
2:D:882:ARG:HD3	6:D:2374:HOH:O	2.02	0.58
2:D:768:GLU:O	2:D:772:THR:HG22	2.04	0.58
2:D:803:THR:O	2:D:807:ILE:HG23	2.04	0.58
2:D:564:TRP:CZ3	5:D:1502:1PE:H122	2.38	0.57
2:D:694:LEU:HD22	2:D:833:GLY:HA2	1.87	0.57
2:D:759:PRO:HB2	2:D:761:THR:HG22	1.85	0.56
2:D:705:MSE:HG2	2:D:709:THR:O	2.05	0.56
2:D:491:GLU:OE2	2:D:493:ARG:HB2	2.05	0.56
2:D:539:ILE:HD13	2:D:646[A]:ILE:HG23	1.88	0.55
2:D:837:ASP:N	2:D:837:ASP:OD1	2.32	0.55
2:D:634:ALA:CB	2:D:684:LEU:HD13	2.35	0.55
2:D:804:LEU:HD21	2:D:919:ILE:CG2	2.37	0.54
2:D:558:LYS:HZ1	5:D:1502:1PE:H261	1.71	0.54
2:D:564:TRP:HZ2	5:D:1502:1PE:H242	1.70	0.54
2:D:280:ILE:HD11	2:D:430:CYS:HA	1.89	0.54
2:D:261:THR:O	2:D:265:MSE:HG2	2.09	0.53
2:D:555:HIS:ND1	2:D:569:HIS:HE1	2.07	0.52
2:D:921:VAL:HG12	2:D:953:PHE:CE1	2.44	0.52
2:D:284:ASN:HD22	2:D:286:LEU:H	1.57	0.52
2:D:476:SER:O	2:D:477:ALA:CB	2.57	0.52
2:D:516:LEU:HD11	2:D:645:VAL:HG21	1.90	0.52
2:D:774:LYS:HE3	2:D:801:PHE:CE1	2.45	0.52
2:D:631:ASP:HB3	2:D:633:SER:H	1.76	0.51
2:D:975:VAL:O	2:D:976:PHE:HB2	2.10	0.50
2:D:569:HIS:HD2	2:D:625:SER:OG	1.95	0.50
2:D:401:ARG:NH2	2:D:487:GLU:OE1	2.45	0.50
2:D:398:ARG:HD3	2:D:400:TRP:CE2	2.47	0.50
2:D:309:ARG:HG2	2:D:456:TRP:CE2	2.46	0.50
2:D:564:TRP:HZ2	5:D:1502:1PE:C24	2.26	0.49
2:D:321:LEU:HD12	2:D:389:THR:HG23	1.94	0.49
1:B:-2:A:O2'	2:D:544:PRO:HD3	2.13	0.49
2:D:284:ASN:ND2	2:D:286:LEU:H	2.10	0.49
2:D:284:ASN:HD22	2:D:284:ASN:C	2.17	0.48
2:D:564:TRP:CH2	5:D:1502:1PE:H122	2.48	0.48
2:D:920:LYS:HB3	2:D:927:VAL:HB	1.96	0.48
2:D:570[A]:ILE:HD13	2:D:842:PHE:CE2	2.50	0.47
2:D:570[A]:ILE:HD11	2:D:843:THR:HG22	1.96	0.47

*Continued on next page...*

*Continued from previous page...*

Atom-1	Atom-2	Interatomic distance (Å)	Clash overlap (Å)
2:D:543:ASP:O	2:D:653:SER:HA	2.14	0.47
2:D:566:VAL:HG11	2:D:730:PHE:CE2	2.49	0.47
2:D:557:LYS:HD2	6:D:2091:HOH:O	2.16	0.46
2:D:615:LEU:HD22	2:D:646[B]:ILE:HD11	1.97	0.46
2:D:532:LYS:HE2	6:D:2117:HOH:O	2.14	0.46
2:D:778:ILE:CG2	2:D:786:LEU:HD13	2.46	0.46
2:D:337:GLU:HG3	2:D:425:ILE:HD13	1.98	0.46
2:D:434:VAL:HG22	2:D:463:PRO:HG2	1.99	0.45
2:D:655:GLU:O	2:D:659:LEU:HD13	2.17	0.45
2:D:804:LEU:HD22	2:D:808:MSE:SE	2.67	0.45
2:D:641:PHE:HB2	2:D:862:ILE:HG21	1.97	0.45
2:D:416:SER:O	6:D:2057:HOH:O	2.21	0.45
2:D:825:SER:OG	2:D:827:PRO:HD2	2.16	0.45
2:D:558:LYS:HZ3	5:D:1502:1PE:H132	1.81	0.44
2:D:842:PHE:O	2:D:855:HIS:HE1	2.00	0.44
2:D:764:GLU:O	2:D:768:GLU:HG3	2.17	0.44
2:D:326:TRP:CD1	2:D:389:THR:HG22	2.51	0.44
2:D:573:VAL:HB	2:D:845:PRO:HB2	2.00	0.44
2:D:283:TYR:HB2	6:D:2018:HOH:O	2.18	0.44
2:D:677:LEU:HB3	2:D:726:LEU:HD13	2.00	0.44
2:D:402:GLN:NE2	2:D:468:VAL:HG11	2.32	0.44
2:D:294:ARG:O	2:D:295:PHE:O	2.35	0.43
2:D:749:THR:O	2:D:877:MSE:HE2	2.18	0.43
2:D:772:THR:HG23	2:D:773[A]:ARG:HG2	1.99	0.43
2:D:419:THR:HG22	2:D:439:ARG:CB	2.48	0.43
2:D:721:LEU:H	2:D:724:ASN:ND2	2.15	0.43
2:D:554:LEU:HD23	2:D:568:VAL:HG22	2.00	0.43
2:D:539:ILE:HG23	2:D:553:ALA:HB1	2.00	0.43
2:D:476:SER:O	2:D:477:ALA:HB3	2.18	0.43
2:D:564:TRP:HZ3	5:D:1502:1PE:H122	1.81	0.43
2:D:264:VAL:HG21	2:D:394:TYR:CG	2.55	0.42
2:D:845:PRO:HA	2:D:851:ASP:HB2	2.00	0.42
1:B:-8:A:C8	2:D:291:SER:HB3	2.55	0.42
2:D:471:LEU:HG	2:D:482:GLU:HG2	2.01	0.42
2:D:280:ILE:CD1	2:D:285:PHE:HA	2.43	0.41
2:D:549:ASP:N	2:D:549:ASP:OD1	2.52	0.41
2:D:727:VAL:O	2:D:731:MSE:HG2	2.21	0.41
2:D:265:MSE:HG2	2:D:265:MSE:H	1.67	0.41
2:D:404:VAL:HG11	2:D:483:ALA:HB1	2.03	0.41
2:D:795:ASP:HA	2:D:796:PRO:HD2	1.95	0.41
2:D:710:SER:HB2	6:D:2270:HOH:O	2.20	0.41

*Continued on next page...*

Continued from previous page...

Atom-1	Atom-2	Interatomic distance (Å)	Clash overlap (Å)
2:D:559:LEU:HD12	2:D:629:GLU:HG3	2.03	0.41
2:D:923:ASN:HA	2:D:953:PHE:HB2	2.02	0.41
2:D:610:THR:HG23	6:D:2210:HOH:O	2.20	0.41
2:D:725:SER:O	2:D:729:GLU:HG2	2.22	0.40
2:D:970:PRO:HB2	6:D:2424:HOH:O	2.20	0.40
2:D:539:ILE:CG2	2:D:553:ALA:HB1	2.51	0.40
2:D:548:VAL:CB	6:D:2207:HOH:O	2.70	0.40
2:D:617:PRO:HA	2:D:648:SER:HB3	2.03	0.40
2:D:539:ILE:CD1	2:D:646[A]:ILE:HD12	2.51	0.40
2:D:440:ARG:HG2	2:D:444:LEU:HG	2.04	0.40

There are no symmetry-related clashes.

## 5.3 Torsion angles [i](#)

### 5.3.1 Protein backbone [i](#)

In the following table, the Percentiles column shows the percent Ramachandran outliers of the chain as a percentile score with respect to all X-ray entries followed by that with respect to entries of similar resolution.

The Analysed column shows the number of residues for which the backbone conformation was analysed, and the total number of residues.

Mol	Chain	Analysed	Favoured	Allowed	Outliers	Percentiles
2	D	695/760 (91%)	669 (96%)	19 (3%)	7 (1%)	19 21

All (7) Ramachandran outliers are listed below:

Mol	Chain	Res	Type
2	D	295	PHE
2	D	477	ALA
2	D	489	ASP
2	D	293	PRO
2	D	476	SER
2	D	631	ASP
2	D	546	GLY

### 5.3.2 Protein sidechains ⓘ

In the following table, the Percentiles column shows the percent sidechain outliers of the chain as a percentile score with respect to all X-ray entries followed by that with respect to entries of similar resolution.

The Analysed column shows the number of residues for which the sidechain conformation was analysed, and the total number of residues.

Mol	Chain	Analysed	Rotameric	Outliers	Percentiles	
2	D	581/655 (89%)	537 (92%)	44 (8%)	16	20

All (44) residues with a non-rotameric sidechain are listed below:

Mol	Chain	Res	Type
2	D	280	ILE
2	D	284	ASN
2	D	325	GLU
2	D	398	ARG
2	D	401	ARG
2	D	426	LEU
2	D	440	ARG
2	D	445	LEU
2	D	453[A]	ILE
2	D	453[B]	ILE
2	D	458	THR
2	D	471	LEU
2	D	493	ARG
2	D	516	LEU
2	D	547	CYS
2	D	558	LYS
2	D	596	LEU
2	D	599	LYS
2	D	604	LEU
2	D	618	TYR
2	D	624	PHE
2	D	630	LEU
2	D	645	VAL
2	D	669	GLU
2	D	670	LEU
2	D	684	LEU
2	D	686	GLN
2	D	698	SER
2	D	700	GLU
2	D	701	VAL

*Continued on next page...*

*Continued from previous page...*

Mol	Chain	Res	Type
2	D	726	LEU
2	D	732	LEU
2	D	738	VAL
2	D	744	ASP
2	D	773[A]	ARG
2	D	773[B]	ARG
2	D	786	LEU
2	D	804	LEU
2	D	807	ILE
2	D	817	GLN
2	D	830	ARG
2	D	837	ASP
2	D	851	ASP
2	D	981	VAL

Some sidechains can be flipped to improve hydrogen bonding and reduce clashes. All (12) such sidechains are listed below:

Mol	Chain	Res	Type
2	D	275	GLN
2	D	284	ASN
2	D	315	GLN
2	D	569	HIS
2	D	704	HIS
2	D	724	ASN
2	D	748	GLN
2	D	755	HIS
2	D	771	ASN
2	D	855	HIS
2	D	875	ASN
2	D	910	ASN

### 5.3.3 RNA ⓘ

Mol	Chain	Analysed	Backbone Outliers	Pucker Outliers
1	B	8/10 (80%)	4 (50%)	2 (25%)

All (4) RNA backbone outliers are listed below:

Mol	Chain	Res	Type
1	B	-8	A

*Continued on next page...*

*Continued from previous page...*

Mol	Chain	Res	Type
1	B	-7	A
1	B	-6	A
1	B	-5	A

All (2) RNA pucker outliers are listed below:

Mol	Chain	Res	Type
1	B	-8	A
1	B	-5	A

## 5.4 Non-standard residues in protein, DNA, RNA chains [i](#)

There are no non-standard protein/DNA/RNA residues in this entry.

## 5.5 Carbohydrates [i](#)

There are no carbohydrates in this entry.

## 5.6 Ligand geometry [i](#)

Of 3 ligands modelled in this entry, 2 are monoatomic - leaving 1 for Mogul analysis.

In the following table, the Counts columns list the number of bonds (or angles) for which Mogul statistics could be retrieved, the number of bonds (or angles) that are observed in the model and the number of bonds (or angles) that are defined in the chemical component dictionary. The Link column lists molecule types, if any, to which the group is linked. The Z score for a bond length (or angle) is the number of standard deviations the observed value is removed from the expected value. A bond length (or angle) with  $|Z| > 2$  is considered an outlier worth inspection. RMSZ is the root-mean-square of all Z scores of the bond lengths (or angles).

Mol	Type	Chain	Res	Link	Bond lengths			Bond angles		
					Counts	RMSZ	$\# Z  > 2$	Counts	RMSZ	$\# Z  > 2$
5	1PE	D	1502	-	15,15,15	0.55	0	14,14,14	0.43	0

In the following table, the Chirals column lists the number of chiral outliers, the number of chiral centers analysed, the number of these observed in the model and the number defined in the chemical component dictionary. Similar counts are reported in the Torsion and Rings columns. '-' means no outliers of that kind were identified.

Mol	Type	Chain	Res	Link	Chirals	Torsions	Rings
5	1PE	D	1502	-	-	0/13/13/13	0/0/0/0

There are no bond length outliers.

There are no bond angle outliers.

There are no chirality outliers.

There are no torsion outliers.

There are no ring outliers.

1 monomer is involved in 9 short contacts:

Mol	Chain	Res	Type	Clashes	Symm-Clashes
5	D	1502	1PE	9	0

## 5.7 Other polymers [i](#)

There are no such residues in this entry.

## 5.8 Polymer linkage issues [i](#)

There are no chain breaks in this entry.



## 6 Fit of model and data

### 6.1 Protein, DNA and RNA chains

In the following table, the column labelled ‘#RSRZ> 2’ contains the number (and percentage) of RSRZ outliers, followed by percent RSRZ outliers for the chain as percentile scores relative to all X-ray entries and entries of similar resolution. The OWAB column contains the minimum, median, 95<sup>th</sup> percentile and maximum values of the occupancy-weighted average B-factor per residue. The column labelled ‘Q< 0.9’ lists the number of (and percentage) of residues with an average occupancy less than 0.9.

Mol	Chain	Analysed	<RSRZ>	#RSRZ>2	OWAB(Å <sup>2</sup> )	Q<0.9
1	B	10/10 (100%)	1.54	4 (40%) <b>0</b> <b>0</b>	13, 19, 49, 53	0
2	D	676/760 (88%)	0.38	37 (5%) 29 37	2, 16, 24, 35	0
All	All	686/770 (89%)	0.40	41 (5%) 25 33	2, 16, 24, 53	0

All (41) RSRZ outliers are listed below:

Mol	Chain	Res	Type	RSRZ
2	D	570[A]	ILE	5.8
2	D	842	PHE	4.0
2	D	843	THR	4.0
1	B	-10	A	3.9
2	D	852	VAL	3.9
1	B	-8	A	3.8
1	B	-9	A	3.7
2	D	846	ILE	3.6
2	D	417	SER	3.5
1	B	-7	A	3.3
2	D	845	PRO	3.3
2	D	965	THR	3.2
2	D	734	ALA	3.0
2	D	624	PHE	3.0
2	D	738	VAL	3.0
2	D	854	ALA	2.9
2	D	293	PRO	2.9
2	D	573	VAL	2.8
2	D	604	LEU	2.8
2	D	773[A]	ARG	2.8
2	D	323	GLN	2.7
2	D	568	VAL	2.7
2	D	571	ALA	2.6
2	D	626	VAL	2.6

*Continued on next page...*

*Continued from previous page...*

Mol	Chain	Res	Type	RSRZ
2	D	386	ILE	2.6
2	D	400	TRP	2.5
2	D	554	LEU	2.5
2	D	268	LEU	2.5
2	D	310	ALA	2.4
2	D	841	HIS	2.4
2	D	699	PRO	2.4
2	D	732	LEU	2.3
2	D	848	ARG	2.3
2	D	742	ILE	2.3
2	D	295	PHE	2.3
2	D	851	ASP	2.2
2	D	474	ILE	2.2
2	D	912	SER	2.1
2	D	966	ASN	2.1
2	D	850	CYS	2.0
2	D	519	PRO	2.0

## 6.2 Non-standard residues in protein, DNA, RNA chains [i](#)

There are no non-standard protein/DNA/RNA residues in this entry.

## 6.3 Carbohydrates [i](#)

There are no carbohydrates in this entry.

## 6.4 Ligands [i](#)

In the following table, the Atoms column lists the number of modelled atoms in the group and the number defined in the chemical component dictionary. LLDF column lists the quality of electron density of the group with respect to its neighbouring residues in protein, DNA or RNA chains. The B-factors column lists the minimum, median, 95<sup>th</sup> percentile and maximum values of B factors of atoms in the group. The column labelled 'Q< 0.9' lists the number of atoms with occupancy less than 0.9.

Mol	Type	Chain	Res	Atoms	RSCC	RSR	LLDF	B-factors(Å <sup>2</sup> )	Q<0.9
4	NA	D	1501	1/1	0.98	0.16	1.27	7,7,7,7	0
5	1PE	D	1502	16/16	0.92	0.15	-0.64	23,24,26,26	0
3	MG	D	1500	1/1	0.94	0.05	-3.75	16,16,16,16	0

## 6.5 Other polymers [i](#)

There are no such residues in this entry.