



wwPDB X-ray Structure Validation Summary Report ⓘ

Feb 1, 2016 – 06:04 AM GMT

PDB ID : 2VPW
Title : POLYSULFIDE REDUCTASE WITH BOUND MENAQUINONE
Authors : Jormakka, M.; Yokoyama, K.; Yano, T.; Tamakoshi, M.; Akimoto, S.; Shimamura, T.; Curmi, P.; Iwata, S.
Deposited on : 2008-03-09
Resolution : 3.10 Å(reported)

This is a wwPDB X-ray Structure Validation Summary Report for a publicly released PDB entry.
We welcome your comments at validation@mail.wwpdb.org
A user guide is available at
<http://wwpdb.org/validation/2016/XrayValidationReportHelp>
with specific help available everywhere you see the ⓘ symbol.

The following versions of software and data (see [references ⓘ](#)) were used in the production of this report:

MolProbity : 4.02b-467
Mogul : 1.7 (RC4), CSD as536be (2015)
Xtriage (Phenix) : 1.9-1692
EDS : rb-20026688
Percentile statistics : 20151230.v01 (using entries in the PDB archive December 30th 2015)
Refmac : 5.8.0135
CCP4 : 6.5.0
Ideal geometry (proteins) : Engh & Huber (2001)
Ideal geometry (DNA, RNA) : Parkinson et al. (1996)
Validation Pipeline (wwPDB-VP) : trunk26865

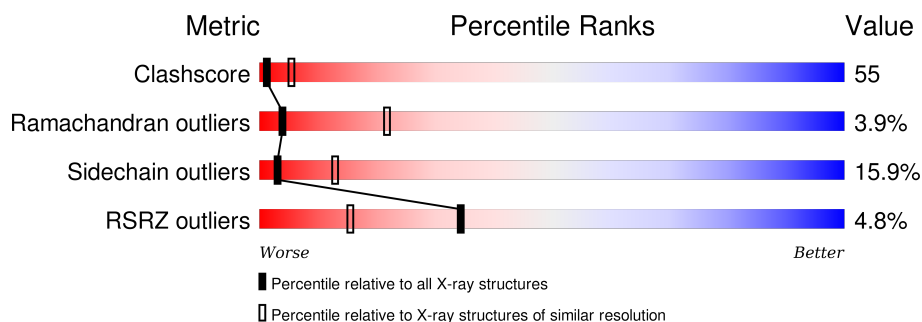
1 Overall quality at a glance

The following experimental techniques were used to determine the structure:

X-RAY DIFFRACTION

The reported resolution of this entry is 3.10 Å.

Percentile scores (ranging between 0-100) for global validation metrics of the entry are shown in the following graphic. The table shows the number of entries on which the scores are based.



Metric	Whole archive (#Entries)	Similar resolution (#Entries, resolution range(Å))
Clashscore	102246	1222 (3.14-3.06)
Ramachandran outliers	100387	1174 (3.14-3.06)
Sidechain outliers	100360	1174 (3.14-3.06)
RSRZ outliers	91569	1119 (3.14-3.06)

The table below summarises the geometric issues observed across the polymeric chains and their fit to the electron density. The red, orange, yellow and green segments on the lower bar indicate the fraction of residues that contain outliers for ≥ 3 , 2, 1 and 0 types of geometric quality criteria. A grey segment represents the fraction of residues that are not modelled. The numeric value for each fraction is indicated below the corresponding segment, with a dot representing fractions $\leq 5\%$. The upper red bar (where present) indicates the fraction of residues that have poor fit to the electron density. The numeric value is given above the bar.

Mol	Chain	Length	Quality of chain
1	A	765	
1	E	765	
2	B	195	
2	F	195	
3	C	253	
3	G	253	

The following table lists non-polymeric compounds, carbohydrate monomers and non-standard residues in protein, DNA, RNA chains that are outliers for geometric or electron-density-fit criteria:

Mol	Type	Chain	Res	Chirality	Geometry	Clashes	Electron density
4	SF4	B	1194	-	-	X	-
4	SF4	B	1195	-	-	X	-
4	SF4	B	1196	-	-	X	-
4	SF4	F	1194	-	-	X	-
4	SF4	F	1195	-	-	X	-
7	MQ7	C	1252	-	-	-	X
7	MQ7	G	1251	-	-	-	X

2 Entry composition

There are 8 unique types of molecules in this entry. The entry contains 20223 atoms, of which 0 are hydrogens and 0 are deuteriums.

In the tables below, the ZeroOcc column contains the number of atoms modelled with zero occupancy, the AltConf column contains the number of residues with at least one atom in alternate conformation and the Trace column contains the number of residues modelled with at most 2 atoms.

- Molecule 1 is a protein called THIOSULFATE REDUCTASE.

Mol	Chain	Residues	Atoms					ZeroOcc	AltConf	Trace
1	A	735	Total	C	N	O	S	0	0	1
			5896	3802	1032	1043	19			
1	E	735	Total	C	N	O	S	0	0	1
			5896	3802	1032	1043	19			

- Molecule 2 is a protein called NRFC PROTEIN.

Mol	Chain	Residues	Atoms					ZeroOcc	AltConf	Trace
2	B	194	Total	C	N	O	S	0	0	1
			1475	930	256	269	20			
2	F	194	Total	C	N	O	S	0	0	1
			1475	930	256	269	20			

- Molecule 3 is a protein called HYPOTHETICAL MEMBRANE SPANNING PROTEIN.

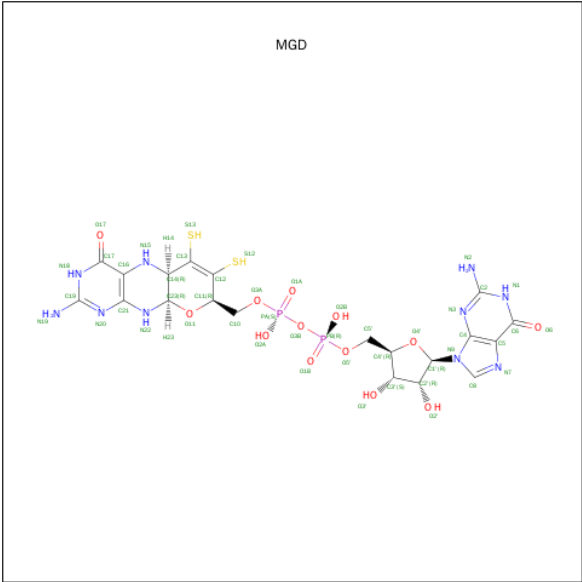
Mol	Chain	Residues	Atoms					ZeroOcc	AltConf	Trace
3	C	251	Total	C	N	O	S	0	0	1
			1948	1323	320	303	2			
3	G	251	Total	C	N	O	S	0	0	1
			1948	1323	320	303	2			

- Molecule 4 is IRON/SULFUR CLUSTER (three-letter code: SF4) (formula: Fe₄S₄).



Mol	Chain	Residues	Atoms			ZeroOcc	AltConf
4	A	1	Total	Fe	S	0	0
			8	4	4		
4	B	1	Total	Fe	S	0	0
			8	4	4		
4	B	1	Total	Fe	S	0	0
			8	4	4		
4	B	1	Total	Fe	S	0	0
			8	4	4		
4	E	1	Total	Fe	S	0	0
			8	4	4		
4	F	1	Total	Fe	S	0	0
			8	4	4		
4	F	1	Total	Fe	S	0	0
			8	4	4		
4	F	1	Total	Fe	S	0	0
			8	4	4		

- Molecule 5 is 2-AMINO-5,6-DIMERCAPTO-7-METHYL-3,7,8A,9-TETRAHYDRO-8-OXA-1,3,9,10-TETRAAZA-ANTHRACEN-4-ONE GUANOSINE DINUCLEOTIDE (three-letter code: MGD) (formula: C₂₀H₂₆N₁₀O₁₃P₂S₂).

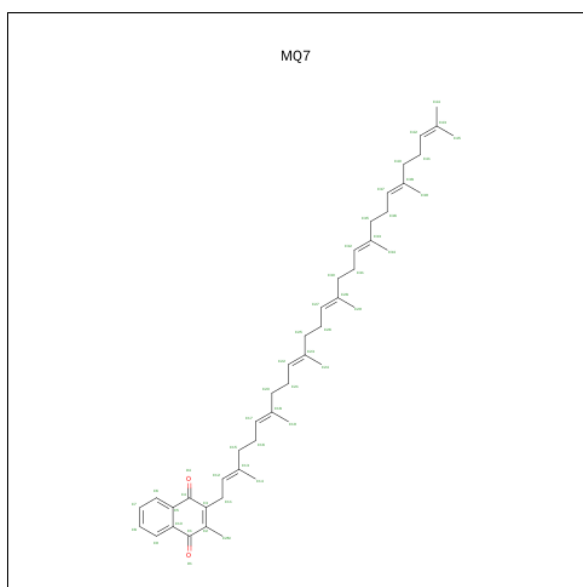


Mol	Chain	Residues	Atoms						ZeroOcc	AltConf
5	A	1	Total	C	N	O	P	S	0	0
			47	20	10	13	2	2		
5	A	1	Total	C	N	O	P	S	0	0
			47	20	10	13	2	2		
5	E	1	Total	C	N	O	P	S	0	0
			47	20	10	13	2	2		
5	E	1	Total	C	N	O	P	S	0	0
			47	20	10	13	2	2		

- Molecule 6 is MOLYBDENUM ATOM (three-letter code: MO) (formula: Mo).

Mol	Chain	Residues	Atoms		ZeroOcc	AltConf
6	A	1	Total	Mo	0	0
			1	1		
6	E	1	Total	Mo	0	0
			1	1		

- Molecule 7 is MENAQUINONE-7 (three-letter code: MQ7) (formula: C₄₆H₆₄O₂).



Mol	Chain	Residues	Atoms			ZeroOcc	AltConf
7	C	1	Total	C	O	0	0
			15	13	2		
7	G	1	Total	C	O	0	0
			15	13	2		

- Molecule 8 is water.

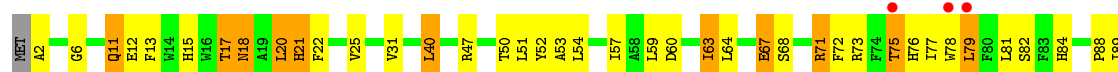
Mol	Chain	Residues	Atoms		ZeroOcc	AltConf
8	A	386	Total	O	0	0
			386	386		
8	B	149	Total	O	0	0
			149	149		
8	C	90	Total	O	0	0
			90	90		
8	E	453	Total	O	0	0
			453	453		
8	F	129	Total	O	0	0
			129	129		
8	G	78	Total	O	0	0
			78	78		



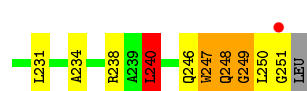
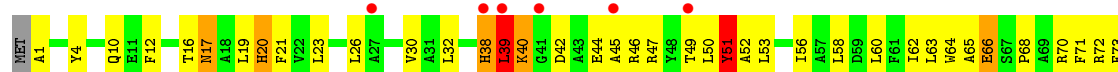
• Molecule 2: NRFC PROTEIN



• Molecule 3: HYPOTHETICAL MEMBRANE SPANNING PROTEIN



• Molecule 3: HYPOTHETICAL MEMBRANE SPANNING PROTEIN



4 Data and refinement statistics

Property	Value	Source
Space group	P 21 21 21	Depositor
Cell constants a, b, c, α , β , γ	115.38Å 163.58Å 238.89Å 90.00° 90.00° 90.00°	Depositor
Resolution (Å)	39.82 – 3.10 39.82 – 3.00	Depositor EDS
% Data completeness (in resolution range)	96.0 (39.82-3.10) 96.1 (39.82-3.00)	Depositor EDS
R_{merge}	0.11	Depositor
R_{sym}	(Not available)	Depositor
$\langle I/\sigma(I) \rangle$ ¹	1.86 (at 3.01Å)	Xtriage
Refinement program	CNS 1.1	Depositor
R, R_{free}	0.271 , 0.275 0.260 , (Not available)	Depositor DCC
R_{free} test set	No test flags present.	DCC
Wilson B-factor (Å ²)	77.7	Xtriage
Anisotropy	0.355	Xtriage
Bulk solvent k_{sol} (e/Å ³), B_{sol} (Å ²)	0.36 , 75.2	EDS
Estimated twinning fraction	No twinning to report.	Xtriage
L-test for twinning ²	$\langle L \rangle = 0.48$, $\langle L^2 \rangle = 0.31$	Xtriage
Outliers	0 of 87524 reflections	Xtriage
F_o, F_c correlation	0.89	EDS
Total number of atoms	20223	wwPDB-VP
Average B, all atoms (Å ²)	75.0	wwPDB-VP

Xtriage's analysis on translational NCS is as follows: *The largest off-origin peak in the Patterson function is 2.13% of the height of the origin peak. No significant pseudotranslation is detected.*

¹Intensities estimated from amplitudes.

²Theoretical values of $\langle |L| \rangle$, $\langle L^2 \rangle$ for acentric reflections are 0.5, 0.375 respectively for untwinned datasets, and 0.333, 0.2 for perfectly twinned datasets.

5 Model quality

5.1 Standard geometry

Bond lengths and bond angles in the following residue types are not validated in this section: MO, SF4, MQ7, MGD

The Z score for a bond length (or angle) is the number of standard deviations the observed value is removed from the expected value. A bond length (or angle) with $|Z| > 5$ is considered an outlier worth inspection. RMSZ is the root-mean-square of all Z scores of the bond lengths (or angles).

Mol	Chain	Bond lengths		Bond angles	
		RMSZ	$\# Z > 5$	RMSZ	$\# Z > 5$
1	A	0.86	3/6079 (0.0%)	1.20	38/8267 (0.5%)
1	E	0.98	9/6079 (0.1%)	1.48	86/8267 (1.0%)
2	B	0.96	2/1512 (0.1%)	1.29	14/2058 (0.7%)
2	F	0.99	2/1512 (0.1%)	1.30	21/2058 (1.0%)
3	C	0.72	0/2016	0.99	9/2764 (0.3%)
3	G	0.86	2/2016 (0.1%)	1.19	14/2764 (0.5%)
All	All	0.91	18/19214 (0.1%)	1.29	182/26178 (0.7%)

Chiral center outliers are detected by calculating the chiral volume of a chiral center and verifying if the center is modelled as a planar moiety or with the opposite hand. A planarity outlier is detected by checking planarity of atoms in a peptide group, atoms in a mainchain group or atoms of a sidechain that are expected to be planar.

Mol	Chain	#Chirality outliers	#Planarity outliers
1	A	1	2
1	E	1	5
3	G	0	1
All	All	2	8

The worst 5 of 18 bond length outliers are listed below:

Mol	Chain	Res	Type	Atoms	Z	Observed(Å)	Ideal(Å)
1	E	387	GLY	C-N	-29.46	0.66	1.34
1	A	583	PHE	C-N	21.25	1.71	1.33
1	E	323	LYS	C-N	17.11	1.66	1.34
3	G	109	LYS	C-N	-15.26	1.05	1.33
2	F	135	CYS	CB-SG	14.35	2.06	1.82

The worst 5 of 182 bond angle outliers are listed below:

Mol	Chain	Res	Type	Atoms	Z	Observed(°)	Ideal(°)
1	E	240	SER	N-CA-CB	-32.15	62.28	110.50
1	E	595	GLN	N-CA-CB	-20.28	74.10	110.60
1	E	387	GLY	O-C-N	-19.71	91.16	122.70
1	E	231	LYS	N-CA-CB	-18.54	77.23	110.60
1	E	583	PHE	N-CA-CB	-16.79	80.37	110.60

All (2) chirality outliers are listed below:

Mol	Chain	Res	Type	Atom
1	A	401	PHE	CA
1	E	585	THR	CA

5 of 8 planarity outliers are listed below:

Mol	Chain	Res	Type	Group
1	A	402	LYS	Mainchain
1	A	571	TRP	Mainchain
1	E	185	PHE	Mainchain
1	E	387	GLY	Mainchain
1	E	388	CYS	Mainchain

5.2 Too-close contacts

In the following table, the Non-H and H(model) columns list the number of non-hydrogen atoms and hydrogen atoms in the chain respectively. The H(added) column lists the number of hydrogen atoms added and optimized by MolProbity. The Clashes column lists the number of clashes within the asymmetric unit, whereas Symm-Clashes lists symmetry related clashes.

Mol	Chain	Non-H	H(model)	H(added)	Clashes	Symm-Clashes
1	A	5896	0	5813	769	3
1	E	5896	0	5813	694	3
2	B	1475	0	1453	168	0
2	F	1475	0	1454	145	0
3	C	1948	0	2001	164	0
3	G	1948	0	2003	182	0
4	A	8	0	0	0	0
4	B	32	0	0	7	0
4	E	8	0	0	1	0
4	F	32	0	0	6	0
5	A	94	0	44	11	0
5	E	94	0	43	18	0
6	A	1	0	0	0	0

Continued on next page...

Continued from previous page...

Mol	Chain	Non-H	H(model)	H(added)	Clashes	Symm-Clashes
6	E	1	0	0	0	0
7	C	15	0	9	18	0
7	G	15	0	9	19	0
8	A	386	0	0	96	0
8	B	149	0	0	44	0
8	C	90	0	0	10	0
8	E	453	0	0	137	0
8	F	129	0	0	33	0
8	G	78	0	0	34	0
All	All	20223	0	18642	2069	3

The all-atom clashscore is defined as the number of clashes found per 1000 atoms (including hydrogen atoms). The all-atom clashscore for this structure is 55.

The worst 5 of 2069 close contacts within the same asymmetric unit are listed below, sorted by their clash magnitude.

Atom-1	Atom-2	Interatomic distance (Å)	Clash overlap (Å)
1:A:602:HIS:CE1	1:A:606:PRO:HG3	1.28	1.63
1:A:184:VAL:CG2	1:A:592:LEU:HD23	1.45	1.45
1:A:186:GLY:HA3	1:A:583:PHE:C	1.15	1.44
2:F:135:CYS:SG	2:F:135:CYS:CB	2.06	1.43
1:A:583:PHE:C	1:A:584:GLY:N	1.71	1.43

All (3) symmetry-related close contacts are listed below. The label for Atom-2 includes the symmetry operator and encoded unit-cell translations to be applied.

Atom-1	Atom-2	Interatomic distance (Å)	Clash overlap (Å)
1:A:399:GLU:OE2	1:E:133:GLU:C[2_674]	1.32	0.88
1:A:399:GLU:OE2	1:E:134:LYS:N[2_674]	1.51	0.69
1:A:399:GLU:OE2	1:E:133:GLU:O[2_674]	1.91	0.29

5.3 Torsion angles [i](#)

5.3.1 Protein backbone [i](#)

In the following table, the Percentiles column shows the percent Ramachandran outliers of the chain as a percentile score with respect to all X-ray entries followed by that with respect to entries of similar resolution.

The Analysed column shows the number of residues for which the backbone conformation was

analysed, and the total number of residues.

Mol	Chain	Analysed	Favoured	Allowed	Outliers	Percentiles	
1	A	733/765 (96%)	651 (89%)	46 (6%)	36 (5%)	3	16
1	E	733/765 (96%)	634 (86%)	65 (9%)	34 (5%)	3	17
2	B	192/195 (98%)	176 (92%)	12 (6%)	4 (2%)	9	37
2	F	192/195 (98%)	181 (94%)	7 (4%)	4 (2%)	9	37
3	C	249/253 (98%)	232 (93%)	12 (5%)	5 (2%)	9	38
3	G	249/253 (98%)	220 (88%)	20 (8%)	9 (4%)	4	24
All	All	2348/2426 (97%)	2094 (89%)	162 (7%)	92 (4%)	4	22

5 of 92 Ramachandran outliers are listed below:

Mol	Chain	Res	Type
1	A	336	TRP
1	A	340	ASP
1	A	428	GLU
1	A	429	PRO
1	A	430	TYR

5.3.2 Protein sidechains ⓘ

In the following table, the Percentiles column shows the percent sidechain outliers of the chain as a percentile score with respect to all X-ray entries followed by that with respect to entries of similar resolution.

The Analysed column shows the number of residues for which the sidechain conformation was analysed, and the total number of residues.

Mol	Chain	Analysed	Rotameric	Outliers	Percentiles	
1	A	610/632 (96%)	494 (81%)	116 (19%)	2	8
1	E	610/632 (96%)	502 (82%)	108 (18%)	2	10
2	B	162/163 (99%)	144 (89%)	18 (11%)	8	29
2	F	162/163 (99%)	146 (90%)	16 (10%)	10	34
3	C	185/187 (99%)	161 (87%)	24 (13%)	5	21
3	G	185/187 (99%)	163 (88%)	22 (12%)	6	25
All	All	1914/1964 (98%)	1610 (84%)	304 (16%)	3	13

5 of 304 residues with a non-rotameric sidechain are listed below:

Mol	Chain	Res	Type
3	C	20	LEU
1	E	208	HIS
2	F	175	LEU
3	C	67	GLU
3	C	225	ARG

Some sidechains can be flipped to improve hydrogen bonding and reduce clashes. 5 of 71 such sidechains are listed below:

Mol	Chain	Res	Type
3	C	140	ASN
1	E	192	HIS
2	F	179	ASN
3	C	145	ASN
1	E	60	ASN

5.3.3 RNA [i](#)

There are no RNA molecules in this entry.

5.4 Non-standard residues in protein, DNA, RNA chains [i](#)

There are no non-standard protein/DNA/RNA residues in this entry.

5.5 Carbohydrates [i](#)

There are no carbohydrates in this entry.

5.6 Ligand geometry [i](#)

Of 18 ligands modelled in this entry, 2 are monoatomic - leaving 16 for Mogul analysis.

In the following table, the Counts columns list the number of bonds (or angles) for which Mogul statistics could be retrieved, the number of bonds (or angles) that are observed in the model and the number of bonds (or angles) that are defined in the chemical component dictionary. The Link column lists molecule types, if any, to which the group is linked. The Z score for a bond length (or angle) is the number of standard deviations the observed value is removed from the expected value. A bond length (or angle) with $|Z| > 2$ is considered an outlier worth inspection. RMSZ is the root-mean-square of all Z scores of the bond lengths (or angles).

Mol	Type	Chain	Res	Link	Bond lengths			Bond angles		
					Counts	RMSZ	# Z > 2	Counts	RMSZ	# Z > 2
4	SF4	A	1764	1	0,12,12	0.00	-	0,24,24	0.00	-
5	MGD	A	1765	6	38,52,52	2.37	14 (36%)	43,81,81	3.12	17 (39%)
5	MGD	A	1766	6	38,52,52	2.25	11 (28%)	43,81,81	2.78	11 (25%)
4	SF4	B	1194	2	0,12,12	0.00	-	0,24,24	0.00	-
4	SF4	B	1195	2	0,12,12	0.00	-	0,24,24	0.00	-
4	SF4	B	1196	2	0,12,12	0.00	-	0,24,24	0.00	-
4	SF4	B	1197	2	0,12,12	0.00	-	0,24,24	0.00	-
7	MQ7	C	1252	-	16,16,49	0.27	0	23,23,63	1.55	4 (17%)
4	SF4	E	1764	1	0,12,12	0.00	-	0,24,24	0.00	-
5	MGD	E	1765	6	38,52,52	2.12	13 (34%)	43,81,81	2.66	18 (41%)
5	MGD	E	1766	6	38,52,52	2.44	14 (36%)	43,81,81	2.47	14 (32%)
4	SF4	F	1194	2	0,12,12	0.00	-	0,24,24	0.00	-
4	SF4	F	1195	2	0,12,12	0.00	-	0,24,24	0.00	-
4	SF4	F	1196	2	0,12,12	0.00	-	0,24,24	0.00	-
4	SF4	F	1197	2	0,12,12	0.00	-	0,24,24	0.00	-
7	MQ7	G	1251	-	16,16,49	0.32	0	23,23,63	1.57	4 (17%)

In the following table, the Chirals column lists the number of chiral outliers, the number of chiral centers analysed, the number of these observed in the model and the number defined in the chemical component dictionary. Similar counts are reported in the Torsion and Rings columns. '-' means no outliers of that kind were identified.

Mol	Type	Chain	Res	Link	Chirals	Torsions	Rings
4	SF4	A	1764	1	-	0/0/48/48	0/6/5/5
5	MGD	A	1765	6	-	0/18/66/66	0/6/6/6
5	MGD	A	1766	6	-	0/18/66/66	0/6/6/6
4	SF4	B	1194	2	-	0/0/48/48	0/6/5/5
4	SF4	B	1195	2	-	0/0/48/48	0/6/5/5
4	SF4	B	1196	2	-	0/0/48/48	0/6/5/5
4	SF4	B	1197	2	-	0/0/48/48	0/6/5/5
7	MQ7	C	1252	-	-	0/2/22/61	0/2/2/2
4	SF4	E	1764	1	-	0/0/48/48	0/6/5/5
5	MGD	E	1765	6	-	0/18/66/66	0/6/6/6
5	MGD	E	1766	6	-	0/18/66/66	0/6/6/6
4	SF4	F	1194	2	-	0/0/48/48	0/6/5/5
4	SF4	F	1195	2	-	0/0/48/48	0/6/5/5
4	SF4	F	1196	2	-	0/0/48/48	0/6/5/5
4	SF4	F	1197	2	-	0/0/48/48	0/6/5/5
7	MQ7	G	1251	-	-	0/2/22/61	0/2/2/2

The worst 5 of 52 bond length outliers are listed below:

Mol	Chain	Res	Type	Atoms	Z	Observed(Å)	Ideal(Å)
5	A	1765	MGD	C23-C14	-10.33	1.45	1.53
5	A	1766	MGD	C23-C14	-8.09	1.47	1.53
5	E	1765	MGD	C23-C14	-7.59	1.48	1.53
5	E	1766	MGD	C23-C14	-7.34	1.48	1.53
5	A	1766	MGD	C14-N15	-4.98	1.38	1.45

The worst 5 of 68 bond angle outliers are listed below:

Mol	Chain	Res	Type	Atoms	Z	Observed(°)	Ideal(°)
5	E	1765	MGD	O11-C23-C14	-7.85	103.60	108.96
5	A	1765	MGD	C5-C6-N1	-6.25	115.04	123.59
5	E	1765	MGD	C4-C5-N7	-6.09	103.88	109.48
5	A	1765	MGD	C4-C5-N7	-5.09	104.80	109.48
5	E	1765	MGD	C5-C6-N1	-4.59	117.32	123.59

There are no chirality outliers.

There are no torsion outliers.

There are no ring outliers.

13 monomers are involved in 80 short contacts:

Mol	Chain	Res	Type	Clashes	Symm-Clashes
5	A	1765	MGD	6	0
5	A	1766	MGD	5	0
4	B	1194	SF4	3	0
4	B	1195	SF4	2	0
4	B	1196	SF4	2	0
7	C	1252	MQ7	18	0
4	E	1764	SF4	1	0
5	E	1765	MGD	7	0
5	E	1766	MGD	11	0
4	F	1194	SF4	3	0
4	F	1195	SF4	2	0
4	F	1196	SF4	1	0
7	G	1251	MQ7	19	0

5.7 Other polymers ⓘ

There are no such residues in this entry.

5.8 Polymer linkage issues ⓘ

There are no chain breaks in this entry.

6 Fit of model and data [i](#)

6.1 Protein, DNA and RNA chains [i](#)

In the following table, the column labelled ‘#RSRZ> 2’ contains the number (and percentage) of RSRZ outliers, followed by percent RSRZ outliers for the chain as percentile scores relative to all X-ray entries and entries of similar resolution. The OWAB column contains the minimum, median, 95th percentile and maximum values of the occupancy-weighted average B-factor per residue. The column labelled ‘Q< 0.9’ lists the number of (and percentage) of residues with an average occupancy less than 0.9.

Mol	Chain	Analysed	<RSRZ>	#RSRZ>2			OWAB(Å ²)	Q<0.9
1	A	735/765 (96%)	0.31	45 (6%)	25	10	48, 71, 103, 158	0
1	E	735/765 (96%)	0.23	30 (4%)	41	19	46, 70, 101, 161	0
2	B	194/195 (99%)	0.08	6 (3%)	52	28	50, 66, 88, 115	0
2	F	194/195 (99%)	0.25	4 (2%)	67	44	53, 71, 91, 114	0
3	C	251/253 (99%)	0.17	12 (4%)	34	15	55, 78, 105, 123	0
3	G	251/253 (99%)	0.48	17 (6%)	20	7	57, 86, 116, 131	0
All	All	2360/2426 (97%)	0.27	114 (4%)	34	15	46, 72, 105, 161	0

The worst 5 of 114 RSRZ outliers are listed below:

Mol	Chain	Res	Type	RSRZ
3	C	111	GLY	10.5
2	F	194	HIS	9.2
1	A	389	SER	7.7
1	A	764	ARG	7.1
1	A	392	SER	6.8

6.2 Non-standard residues in protein, DNA, RNA chains [i](#)

There are no non-standard protein/DNA/RNA residues in this entry.

6.3 Carbohydrates [i](#)

There are no carbohydrates in this entry.

6.4 Ligands ⓘ

In the following table, the Atoms column lists the number of modelled atoms in the group and the number defined in the chemical component dictionary. LLDF column lists the quality of electron density of the group with respect to its neighbouring residues in protein, DNA or RNA chains. The B-factors column lists the minimum, median, 95th percentile and maximum values of B factors of atoms in the group. The column labelled 'Q< 0.9' lists the number of atoms with occupancy less than 0.9.

Mol	Type	Chain	Res	Atoms	RSCC	RSR	LLDF	B-factors(Å ²)	Q<0.9
7	MQ7	G	1251	15/48	0.84	0.56	4.24	27,31,36,42	0
7	MQ7	C	1252	15/48	0.81	0.57	3.80	26,27,28,29	0
5	MGD	A	1765	47/47	0.96	0.24	-0.48	48,52,55,58	0
5	MGD	E	1765	47/47	0.96	0.24	-0.48	46,53,56,56	0
5	MGD	E	1766	47/47	0.95	0.22	-0.64	41,46,48,50	0
4	SF4	B	1197	8/8	0.99	0.11	-1.13	57,60,61,63	0
4	SF4	B	1196	8/8	0.92	0.15	-1.58	55,59,62,65	0
5	MGD	A	1766	47/47	0.97	0.18	-1.60	37,46,48,52	0
4	SF4	E	1764	8/8	0.99	0.17	-1.78	45,49,52,52	0
4	SF4	F	1196	8/8	0.95	0.15	-1.79	60,65,67,68	0
4	SF4	A	1764	8/8	0.99	0.15	-1.83	44,46,48,49	0
4	SF4	F	1197	8/8	0.93	0.14	-1.88	68,72,73,75	0
4	SF4	F	1195	8/8	0.96	0.14	-2.49	70,71,74,75	0
4	SF4	B	1195	8/8	0.98	0.09	-2.67	65,66,68,68	0
4	SF4	B	1194	8/8	0.95	0.09	-2.85	78,79,80,81	0
4	SF4	F	1194	8/8	0.95	0.10	-2.94	81,83,84,87	0
6	MO	E	1767	1/1	0.98	0.18	-	60,60,60,60	0
6	MO	A	1767	1/1	0.97	0.18	-	54,54,54,54	0

6.5 Other polymers ⓘ

There are no such residues in this entry.