



wwPDB X-ray Structure Validation Summary Report ⓘ

Jan 31, 2016 – 10:58 PM GMT

PDB ID : 1W1M
Title : STRUCTURE OF THE OCTAMERIC FLAVOENZYME VANILLYL-ALCOHOL OXIDASE: GLU502GLY MUTANT
Authors : Van Den Heuvel, R.H.
Deposited on : 2004-06-22
Resolution : 3.00 Å(reported)

This is a wwPDB X-ray Structure Validation Summary Report for a publicly released PDB entry.
We welcome your comments at validation@mail.wwpdb.org
A user guide is available at
<http://wwpdb.org/validation/2016/XrayValidationReportHelp>
with specific help available everywhere you see the ⓘ symbol.

The following versions of software and data (see [references ⓘ](#)) were used in the production of this report:

MolProbity : 4.02b-467
Mogul : 1.7 (RC4), CSD as536be (2015)
Xtriage (Phenix) : 1.9-1692
EDS : rb-20026688
Percentile statistics : 20151230.v01 (using entries in the PDB archive December 30th 2015)
Refmac : 5.8.0135
CCP4 : 6.5.0
Ideal geometry (proteins) : Engh & Huber (2001)
Ideal geometry (DNA, RNA) : Parkinson et al. (1996)
Validation Pipeline (wwPDB-VP) : trunk26865

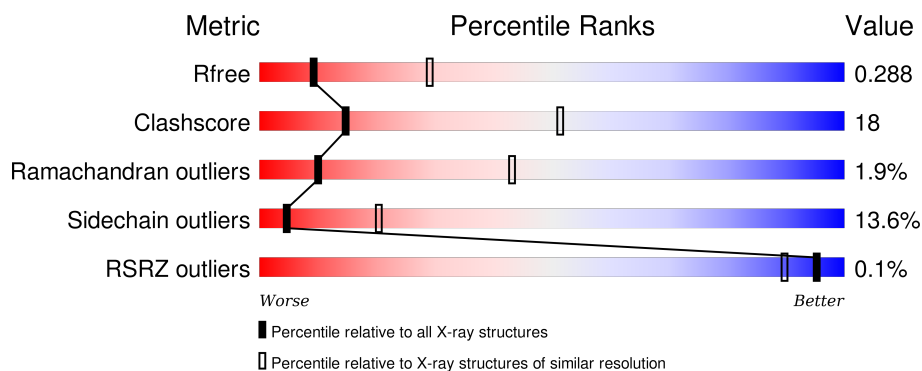
1 Overall quality at a glance ⓘ

The following experimental techniques were used to determine the structure:

X-RAY DIFFRACTION

The reported resolution of this entry is 3.00 Å.

Percentile scores (ranging between 0-100) for global validation metrics of the entry are shown in the following graphic. The table shows the number of entries on which the scores are based.



Metric	Whole archive (#Entries)	Similar resolution (#Entries, resolution range(Å))
R_{free}	91344	1578 (3.00-3.00)
Clashscore	102246	1912 (3.00-3.00)
Ramachandran outliers	100387	1853 (3.00-3.00)
Sidechain outliers	100360	1856 (3.00-3.00)
RSRZ outliers	91569	1592 (3.00-3.00)

The table below summarises the geometric issues observed across the polymeric chains and their fit to the electron density. The red, orange, yellow and green segments on the lower bar indicate the fraction of residues that contain outliers for ≥ 3 , 2, 1 and 0 types of geometric quality criteria. A grey segment represents the fraction of residues that are not modelled. The numeric value for each fraction is indicated below the corresponding segment, with a dot representing fractions $\leq 5\%$. The upper red bar (where present) indicates the fraction of residues that have poor fit to the electron density. The numeric value is given above the bar.

Mol	Chain	Length	Quality of chain
1	A	560	 50% 38% 9% ..
1	B	560	 63% 29% 6% •

The following table lists non-polymeric compounds, carbohydrate monomers and non-standard residues in protein, DNA, RNA chains that are outliers for geometric or electron-density-fit criteria:

Mol	Type	Chain	Res	Chirality	Geometry	Clashes	Electron density
3	EUG	A	1562	-	-	-	X

2 Entry composition [i](#)

There are 3 unique types of molecules in this entry. The entry contains 8820 atoms, of which 0 are hydrogens and 0 are deuteriums.

In the tables below, the ZeroOcc column contains the number of atoms modelled with zero occupancy, the AltConf column contains the number of residues with at least one atom in alternate conformation and the Trace column contains the number of residues modelled with at most 2 atoms.

- Molecule 1 is a protein called VANILLYL-ALCOHOL OXIDASE.

Mol	Chain	Residues	Atoms					ZeroOcc	AltConf	Trace
1	A	550	Total	C	N	O	S	0	0	0
			4346	2790	744	788	24			
1	B	550	Total	C	N	O	S	0	0	0
			4346	2790	744	788	24			

There are 2 discrepancies between the modelled and reference sequences:

Chain	Residue	Modelled	Actual	Comment	Reference
A	502	GLY	GLU	ENGINEERED MUTATION	UNP P56216
B	502	GLY	GLU	ENGINEERED MUTATION	UNP P56216

- Molecule 2 is FLAVIN-ADENINE DINUCLEOTIDE (three-letter code: FAD) (formula: $C_{27}H_{33}N_9O_{15}P_2$).



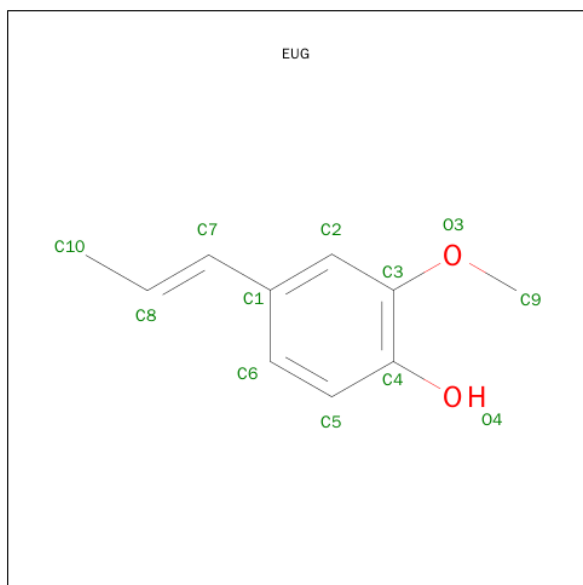
Mol	Chain	Residues	Atoms					ZeroOcc	AltConf
2	A	1	Total	C	N	O	P	0	0
			53	27	9	15	2		

Continued on next page...

Continued from previous page...

Mol	Chain	Residues	Atoms					ZeroOcc	AltConf
2	B	1	Total	C	N	O	P	0	0
			53	27	9	15	2		

- Molecule 3 is 2-METHOXY-4-VINYL-PHENOL (three-letter code: EUG) (formula: C₁₀H₁₂O₂).

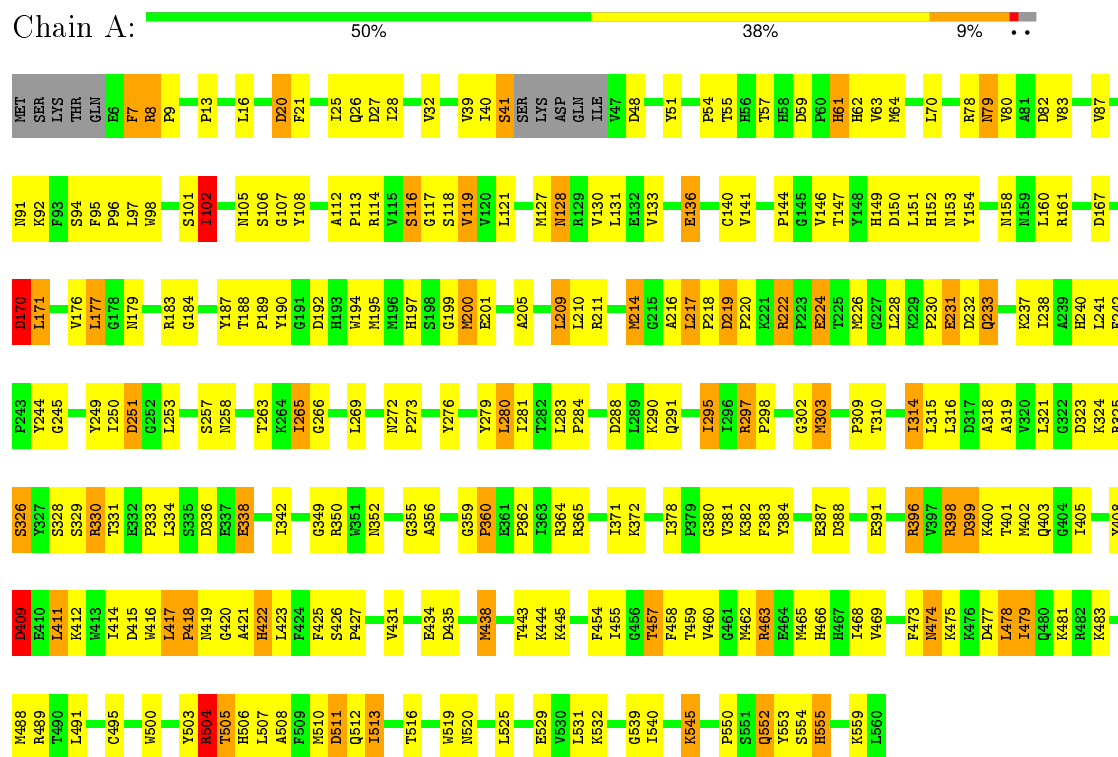


Mol	Chain	Residues	Atoms			ZeroOcc	AltConf
3	A	1	Total	C	O	0	0
			11	9	2		
3	B	1	Total	C	O	0	0
			11	9	2		

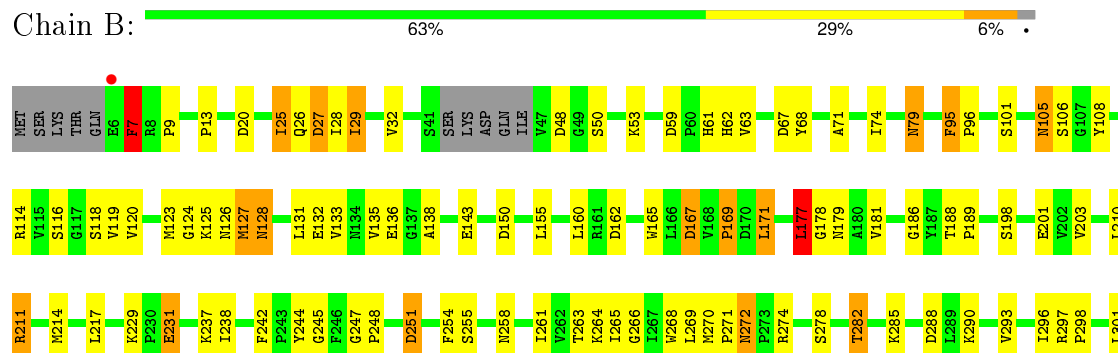
3 Residue-property plots

These plots are drawn for all protein, RNA and DNA chains in the entry. The first graphic for a chain summarises the proportions of errors displayed in the second graphic. The second graphic shows the sequence view annotated by issues in geometry and electron density. Residues are color-coded according to the number of geometric quality criteria for which they contain at least one outlier: green = 0, yellow = 1, orange = 2 and red = 3 or more. A red dot above a residue indicates a poor fit to the electron density ($RSRZ > 2$). Stretches of 2 or more consecutive residues without any outlier are shown as a green connector. Residues present in the sample, but not in the model, are shown in grey.

• Molecule 1: VANILLYL-ALCOHOL OXIDASE



• Molecule 1: VANILLYL-ALCOHOL OXIDASE



G499	W500	Y503	R504	T505	R506	L507	D511	Q512	L513	T516	W519	N520	L525	R526	F527	N528	E529	W530	L531	R532	Y535	D536	T540	L541	P550	S551	Q552	Y553	L560															
T407	I411	K412	W413	I414	D415	W416	L417	P418	A421	H422	S426	K430	W431	S432	G433	M438	K444	K445	R446	C447	Q448	G451	T457	F458	T459	V460	R463	E464	H465	H466	H467	I468	V472	F473	N474	D477	Q480	V484	L487	H488	R489	A496	A497	N498
G302	W303	I307	W308	P309	T310	I311	R312	D317	A318	A319	R320	L321	D323	K324	S329	P333	D336	K341	K344	G349	I352	F353	Y354	L357	Y358	E361	P362	W368	K372	D373	P390	E391	I392	S393	R396	V397	R398	D399	Q403	G404	I405	P406		

4 Data and refinement statistics

Property	Value	Source
Space group	I 4	Depositor
Cell constants a, b, c, α , β , γ	129.91Å 129.91Å 134.43Å 90.00° 90.00° 90.00°	Depositor
Resolution (Å)	40.00 – 3.00 42.36 – 3.00	Depositor EDS
% Data completeness (in resolution range)	97.5 (40.00-3.00) 97.5 (42.36-3.00)	Depositor EDS
R_{merge}	0.13	Depositor
R_{sym}	(Not available)	Depositor
$\langle I/\sigma(I) \rangle$ ¹	1.72 (at 3.01Å)	Xtriage
Refinement program	REFMAC 5.1.27	Depositor
R, R_{free}	0.217 , 0.307 0.199 , 0.288	Depositor DCC
R_{free} test set	1113 reflections (5.38%)	DCC
Wilson B-factor (Å ²)	70.4	Xtriage
Anisotropy	0.301	Xtriage
Bulk solvent k_{sol} (e/Å ³), B_{sol} (Å ²)	0.29 , 43.0	EDS
Estimated twinning fraction	0.007 for l,-k,h 0.013 for -l,-k,-h 0.022 for -h,-l,-k 0.008 for -h,l,k 0.042 for -h,k,-l	Xtriage
L-test for twinning ²	$\langle L \rangle = 0.47$, $\langle L^2 \rangle = 0.30$	Xtriage
Outliers	0 of 21792 reflections	Xtriage
F_o, F_c correlation	0.93	EDS
Total number of atoms	8820	wwPDB-VP
Average B, all atoms (Å ²)	52.0	wwPDB-VP

Xtriage's analysis on translational NCS is as follows: *The largest off-origin peak in the Patterson function is 3.95% of the height of the origin peak. No significant pseudotranslation is detected.*

¹ Intensities estimated from amplitudes.

² Theoretical values of $\langle |L| \rangle$, $\langle L^2 \rangle$ for acentric reflections are 0.5, 0.375 respectively for untwinned datasets, and 0.333, 0.2 for perfectly twinned datasets.

5 Model quality

5.1 Standard geometry

Bond lengths and bond angles in the following residue types are not validated in this section: EUG, FAD

The Z score for a bond length (or angle) is the number of standard deviations the observed value is removed from the expected value. A bond length (or angle) with $|Z| > 5$ is considered an outlier worth inspection. RMSZ is the root-mean-square of all Z scores of the bond lengths (or angles).

Mol	Chain	Bond lengths		Bond angles	
		RMSZ	# $ Z > 5$	RMSZ	# $ Z > 5$
1	A	0.76	0/4465	1.01	16/6068 (0.3%)
1	B	0.53	0/4465	0.84	11/6068 (0.2%)
All	All	0.65	0/8930	0.93	27/12136 (0.2%)

Chiral center outliers are detected by calculating the chiral volume of a chiral center and verifying if the center is modelled as a planar moiety or with the opposite hand. A planarity outlier is detected by checking planarity of atoms in a peptide group, atoms in a mainchain group or atoms of a sidechain that are expected to be planar.

Mol	Chain	#Chirality outliers	#Planarity outliers
1	A	0	2
1	B	0	1
All	All	0	3

There are no bond length outliers.

The worst 5 of 27 bond angle outliers are listed below:

Mol	Chain	Res	Type	Atoms	Z	Observed(°)	Ideal(°)
1	A	388	ASP	CB-CG-OD2	8.24	125.72	118.30
1	A	170	ASP	CB-CG-OD2	7.56	125.11	118.30
1	A	219	ASP	CB-CG-OD2	6.80	124.42	118.30
1	B	177	LEU	CA-CB-CG	6.43	130.09	115.30
1	A	398	ARG	NE-CZ-NH2	-6.22	117.19	120.30

There are no chirality outliers.

All (3) planarity outliers are listed below:

Mol	Chain	Res	Type	Group
1	A	127	MET	Peptide

Continued on next page...

Continued from previous page...

Mol	Chain	Res	Type	Group
1	A	457	THR	Peptide
1	B	127	MET	Peptide

5.2 Too-close contacts ⓘ

In the following table, the Non-H and H(model) columns list the number of non-hydrogen atoms and hydrogen atoms in the chain respectively. The H(added) column lists the number of hydrogen atoms added and optimized by MolProbity. The Clashes column lists the number of clashes within the asymmetric unit, whereas Symm-Clashes lists symmetry related clashes.

Mol	Chain	Non-H	H(model)	H(added)	Clashes	Symm-Clashes
1	A	4346	0	4285	198	0
1	B	4346	0	4285	123	0
2	A	53	0	29	2	0
2	B	53	0	29	10	0
3	A	11	0	7	1	0
3	B	11	0	7	1	0
All	All	8820	0	8642	310	0

The all-atom clashscore is defined as the number of clashes found per 1000 atoms (including hydrogen atoms). The all-atom clashscore for this structure is 18.

The worst 5 of 310 close contacts within the same asymmetric unit are listed below, sorted by their clash magnitude.

Atom-1	Atom-2	Interatomic distance (Å)	Clash overlap (Å)
2:B:1561:FAD:C5B	2:B:1561:FAD:H8A	1.76	1.14
2:B:1561:FAD:C8A	2:B:1561:FAD:H51A	1.80	1.12
1:A:552:GLN:HE21	1:A:552:GLN:H	1.10	0.99
1:A:505:THR:HG21	1:A:513:ILE:CD1	1.93	0.98
2:B:1561:FAD:H51A	2:B:1561:FAD:H8A	0.93	0.91

There are no symmetry-related clashes.

5.3 Torsion angles ⓘ

5.3.1 Protein backbone ⓘ

In the following table, the Percentiles column shows the percent Ramachandran outliers of the chain as a percentile score with respect to all X-ray entries followed by that with respect to entries of similar resolution.

The Analysed column shows the number of residues for which the backbone conformation was analysed, and the total number of residues.

Mol	Chain	Analysed	Favoured	Allowed	Outliers	Percentiles	
1	A	546/560 (98%)	460 (84%)	75 (14%)	11 (2%)	9	41
1	B	546/560 (98%)	495 (91%)	41 (8%)	10 (2%)	11	45
All	All	1092/1120 (98%)	955 (88%)	116 (11%)	21 (2%)	10	43

5 of 21 Ramachandran outliers are listed below:

Mol	Chain	Res	Type
1	A	418	PRO
1	A	83	VAL
1	A	116	SER
1	A	323	ASP
1	B	418	PRO

5.3.2 Protein sidechains ⓘ

In the following table, the Percentiles column shows the percent sidechain outliers of the chain as a percentile score with respect to all X-ray entries followed by that with respect to entries of similar resolution.

The Analysed column shows the number of residues for which the sidechain conformation was analysed, and the total number of residues.

Mol	Chain	Analysed	Rotameric	Outliers	Percentiles	
1	A	469/481 (98%)	399 (85%)	70 (15%)	4	17
1	B	469/481 (98%)	411 (88%)	58 (12%)	6	24
All	All	938/962 (98%)	810 (86%)	128 (14%)	5	20

5 of 128 residues with a non-rotameric sidechain are listed below:

Mol	Chain	Res	Type
1	A	475	LYS
1	B	25	ILE
1	B	460	VAL
1	A	479	ILE
1	A	520	ASN

Some sidechains can be flipped to improve hydrogen bonding and reduce clashes. 5 of 24 such sidechains are listed below:

Mol	Chain	Res	Type
1	A	538	ASN
1	B	126	ASN
1	B	520	ASN
1	A	552	GLN
1	B	79	ASN

5.3.3 RNA [i](#)

There are no RNA molecules in this entry.

5.4 Non-standard residues in protein, DNA, RNA chains [i](#)

There are no non-standard protein/DNA/RNA residues in this entry.

5.5 Carbohydrates [i](#)

There are no carbohydrates in this entry.

5.6 Ligand geometry [i](#)

4 ligands are modelled in this entry.

In the following table, the Counts columns list the number of bonds (or angles) for which Mogul statistics could be retrieved, the number of bonds (or angles) that are observed in the model and the number of bonds (or angles) that are defined in the chemical component dictionary. The Link column lists molecule types, if any, to which the group is linked. The Z score for a bond length (or angle) is the number of standard deviations the observed value is removed from the expected value. A bond length (or angle) with $|Z| > 2$ is considered an outlier worth inspection. RMSZ is the root-mean-square of all Z scores of the bond lengths (or angles).

Mol	Type	Chain	Res	Link	Bond lengths			Bond angles		
					Counts	RMSZ	$\# Z > 2$	Counts	RMSZ	$\# Z > 2$
2	FAD	A	1561	1	48,58,58	1.31	6 (12%)	54,89,89	2.43	8 (14%)
3	EUG	A	1562	-	11,11,12	1.84	1 (9%)	14,14,15	1.61	3 (21%)
2	FAD	B	1561	1	48,58,58	1.25	5 (10%)	54,89,89	2.29	8 (14%)
3	EUG	B	1562	-	11,11,12	1.86	1 (9%)	14,14,15	1.56	2 (14%)

In the following table, the Chirals column lists the number of chiral outliers, the number of chiral centers analysed, the number of these observed in the model and the number defined in the chemical component dictionary. Similar counts are reported in the Torsion and Rings columns. '-' means no outliers of that kind were identified.

Mol	Type	Chain	Res	Link	Chirals	Torsions	Rings
2	FAD	A	1561	1	-	0/30/50/50	0/6/6/6
3	EUG	A	1562	-	-	0/4/4/5	0/1/1/1
2	FAD	B	1561	1	-	0/30/50/50	0/6/6/6
3	EUG	B	1562	-	-	0/4/4/5	0/1/1/1

The worst 5 of 13 bond length outliers are listed below:

Mol	Chain	Res	Type	Atoms	Z	Observed(Å)	Ideal(Å)
2	A	1561	FAD	C2A-N1A	2.29	1.38	1.33
2	B	1561	FAD	C2A-N1A	2.44	1.38	1.33
2	A	1561	FAD	C10-N1	2.45	1.39	1.35
2	A	1561	FAD	C4-N3	2.78	1.38	1.33
2	B	1561	FAD	C4-N3	2.84	1.38	1.33

The worst 5 of 21 bond angle outliers are listed below:

Mol	Chain	Res	Type	Atoms	Z	Observed(°)	Ideal(°)
2	A	1561	FAD	N3A-C2A-N1A	-12.76	119.13	128.89
2	B	1561	FAD	N3A-C2A-N1A	-12.32	119.46	128.89
2	A	1561	FAD	P-O3P-PA	-4.42	120.32	132.73
2	B	1561	FAD	C2B-C1B-N9A	-3.66	108.70	114.29
2	A	1561	FAD	C4X-C4-N3	-2.97	119.53	123.59

There are no chirality outliers.

There are no torsion outliers.

There are no ring outliers.

4 monomers are involved in 14 short contacts:

Mol	Chain	Res	Type	Clashes	Symm-Clashes
2	A	1561	FAD	2	0
3	A	1562	EUG	1	0
2	B	1561	FAD	10	0
3	B	1562	EUG	1	0

5.7 Other polymers ⓘ

There are no such residues in this entry.

5.8 Polymer linkage issues ⓘ

There are no chain breaks in this entry.

6 Fit of model and data [i](#)

6.1 Protein, DNA and RNA chains [i](#)

In the following table, the column labelled ‘#RSRZ> 2’ contains the number (and percentage) of RSRZ outliers, followed by percent RSRZ outliers for the chain as percentile scores relative to all X-ray entries and entries of similar resolution. The OWAB column contains the minimum, median, 95th percentile and maximum values of the occupancy-weighted average B-factor per residue. The column labelled ‘Q< 0.9’ lists the number of (and percentage) of residues with an average occupancy less than 0.9.

Mol	Chain	Analysed	<RSRZ>	#RSRZ>2	OWAB(Å ²)	Q<0.9
1	A	550/560 (98%)	-0.69	0 100 100	22, 37, 50, 62	0
1	B	550/560 (98%)	-0.35	1 (0%) 95 87	40, 64, 90, 99	0
All	All	1100/1120 (98%)	-0.52	1 (0%) 95 90	22, 49, 87, 99	0

All (1) RSRZ outliers are listed below:

Mol	Chain	Res	Type	RSRZ
1	B	6	GLU	2.3

6.2 Non-standard residues in protein, DNA, RNA chains [i](#)

There are no non-standard protein/DNA/RNA residues in this entry.

6.3 Carbohydrates [i](#)

There are no carbohydrates in this entry.

6.4 Ligands [i](#)

In the following table, the Atoms column lists the number of modelled atoms in the group and the number defined in the chemical component dictionary. LLDF column lists the quality of electron density of the group with respect to its neighbouring residues in protein, DNA or RNA chains. The B-factors column lists the minimum, median, 95th percentile and maximum values of B factors of atoms in the group. The column labelled ‘Q< 0.9’ lists the number of atoms with occupancy less than 0.9.

Mol	Type	Chain	Res	Atoms	RSCC	RSR	LLDF	B-factors(Å ²)	Q<0.9
3	EUG	A	1562	11/12	0.90	0.25	3.57	66,68,70,71	0
2	FAD	A	1561	53/53	0.95	0.19	1.46	54,60,69,71	0

Continued on next page...

Continued from previous page...

Mol	Type	Chain	Res	Atoms	RSCC	RSR	LLDF	B-factors(\AA^2)	Q<0.9
3	EUG	B	1562	11/12	0.97	0.25	0.94	60,62,63,63	0
2	FAD	B	1561	53/53	0.93	0.21	0.20	63,70,83,83	0

6.5 Other polymers [i](#)

There are no such residues in this entry.