



Full wwPDB X-ray Structure Validation Report ⓘ

Feb 1, 2016 – 02:07 PM GMT

PDB ID : 3W6O
Title : Crystal structure of human Dlp1 in complex with GMP-PCP
Authors : Kishida, H.; Sugio, S.
Deposited on : 2013-02-17
Resolution : 1.90 Å(reported)

This is a Full wwPDB X-ray Structure Validation Report for a publicly released PDB entry.
We welcome your comments at validation@mail.wwpdb.org
A user guide is available at
<http://wwpdb.org/validation/2016/XrayValidationReportHelp>
with specific help available everywhere you see the ⓘ symbol.

The following versions of software and data (see [references ⓘ](#)) were used in the production of this report:

MolProbity : 4.02b-467
Mogul : 1.7 (RC4), CSD as536be (2015)
Xtriage (Phenix) : 1.9-1692
EDS : rb-20026688
Percentile statistics : 20151230.v01 (using entries in the PDB archive December 30th 2015)
Refmac : 5.8.0135
CCP4 : 6.5.0
Ideal geometry (proteins) : Engh & Huber (2001)
Ideal geometry (DNA, RNA) : Parkinson et al. (1996)
Validation Pipeline (wwPDB-VP) : trunk26865

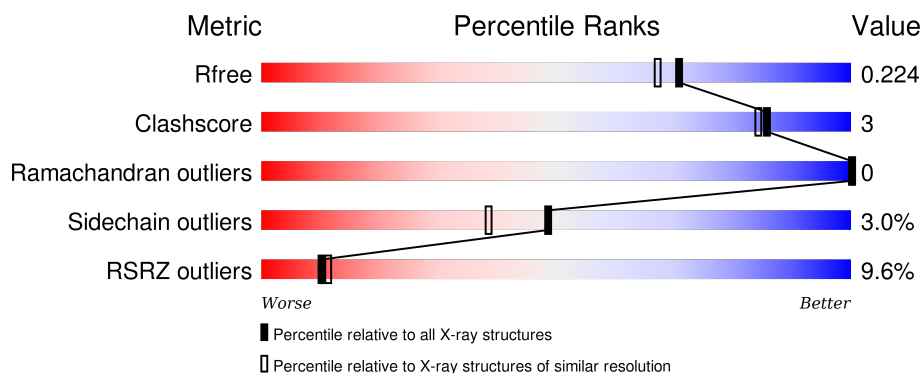
1 Overall quality at a glance

The following experimental techniques were used to determine the structure:

X-RAY DIFFRACTION

The reported resolution of this entry is 1.90 Å.

Percentile scores (ranging between 0-100) for global validation metrics of the entry are shown in the following graphic. The table shows the number of entries on which the scores are based.



Metric	Whole archive (#Entries)	Similar resolution (#Entries, resolution range(Å))
R_{free}	91344	4755 (1.90-1.90)
Clashscore	102246	5398 (1.90-1.90)
Ramachandran outliers	100387	5338 (1.90-1.90)
Sidechain outliers	100360	5339 (1.90-1.90)
RSRZ outliers	91569	4766 (1.90-1.90)

The table below summarises the geometric issues observed across the polymeric chains and their fit to the electron density. The red, orange, yellow and green segments on the lower bar indicate the fraction of residues that contain outliers for ≥ 3 , 2, 1 and 0 types of geometric quality criteria. A grey segment represents the fraction of residues that are not modelled. The numeric value for each fraction is indicated below the corresponding segment, with a dot representing fractions $\leq 5\%$. The upper red bar (where present) indicates the fraction of residues that have poor fit to the electron density. The numeric value is given above the bar.

Mol	Chain	Length	Quality of chain
1	A	364	
1	B	364	

The following table lists non-polymeric compounds, carbohydrate monomers and non-standard residues in protein, DNA, RNA chains that are outliers for geometric or electron-density-fit criteria:

Mol	Type	Chain	Res	Chirality	Geometry	Clashes	Electron density
4	PG4	B	803	-	-	-	X
4	PG4	B	804	-	-	-	X

2 Entry composition

There are 6 unique types of molecules in this entry. The entry contains 5942 atoms, of which 0 are hydrogens and 0 are deuteriums.

In the tables below, the ZeroOcc column contains the number of atoms modelled with zero occupancy, the AltConf column contains the number of residues with at least one atom in alternate conformation and the Trace column contains the number of residues modelled with at most 2 atoms.

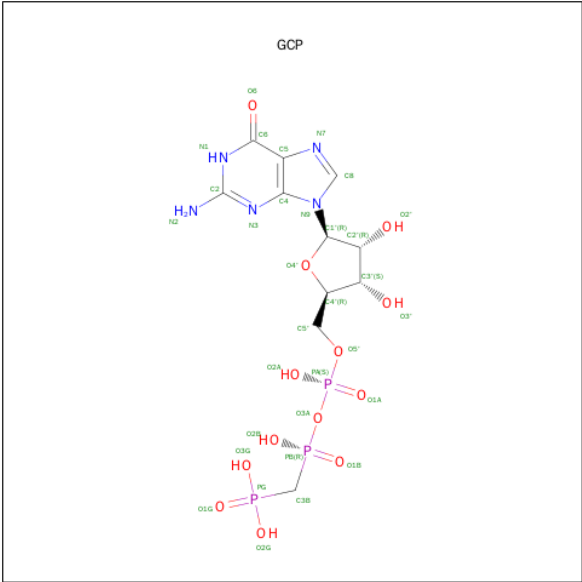
- Molecule 1 is a protein called Dynamin-1-like protein.

Mol	Chain	Residues	Atoms					ZeroOcc	AltConf	Trace
1	A	337	Total	C	N	O	S	0	0	0
			2638	1662	471	496	9			
1	B	341	Total	C	N	O	S	0	0	0
			2672	1681	479	503	9			

There are 14 discrepancies between the modelled and reference sequences:

Chain	Residue	Modelled	Actual	Comment	Reference
A	-1	GLY	-	EXPRESSION TAG	UNP O00429
A	0	PRO	-	EXPRESSION TAG	UNP O00429
A	330	HIS	-	LINKER	UNP O00429
A	331	GLY	-	LINKER	UNP O00429
A	332	THR	-	LINKER	UNP O00429
A	333	ASP	-	LINKER	UNP O00429
A	334	SER	-	LINKER	UNP O00429
B	-1	GLY	-	EXPRESSION TAG	UNP O00429
B	0	PRO	-	EXPRESSION TAG	UNP O00429
B	330	HIS	-	LINKER	UNP O00429
B	331	GLY	-	LINKER	UNP O00429
B	332	THR	-	LINKER	UNP O00429
B	333	ASP	-	LINKER	UNP O00429
B	334	SER	-	LINKER	UNP O00429

- Molecule 2 is PHOSPHOMETHYLPHOSPHONIC ACID GUANYLATE ESTER (three-letter code: GCP) (formula: C₁₁H₁₈N₅O₁₃P₃).

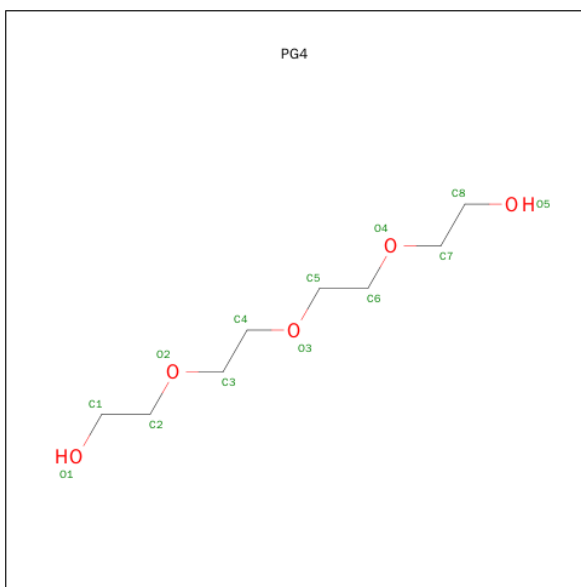


Mol	Chain	Residues	Atoms					ZeroOcc	AltConf
2	A	1	Total	C	N	O	P	0	0
			32	11	5	13	3		
2	B	1	Total	C	N	O	P	0	0
			32	11	5	13	3		

- Molecule 3 is MAGNESIUM ION (three-letter code: MG) (formula: Mg).

Mol	Chain	Residues	Atoms		ZeroOcc	AltConf
3	B	1	Total	Mg	0	0
			1	1		
3	A	1	Total	Mg	0	0
			1	1		

- Molecule 4 is TETRAETHYLENE GLYCOL (three-letter code: PG4) (formula: C₈H₁₈O₅).



Mol	Chain	Residues	Atoms			ZeroOcc	AltConf
4	B	1	Total	C	O	0	0
			13	8	5		
4	B	1	Total	C	O	0	0
			13	8	5		

- Molecule 5 is CALCIUM ION (three-letter code: CA) (formula: Ca).

Mol	Chain	Residues	Atoms		ZeroOcc	AltConf
5	B	1	Total	Ca	0	0
			1	1		

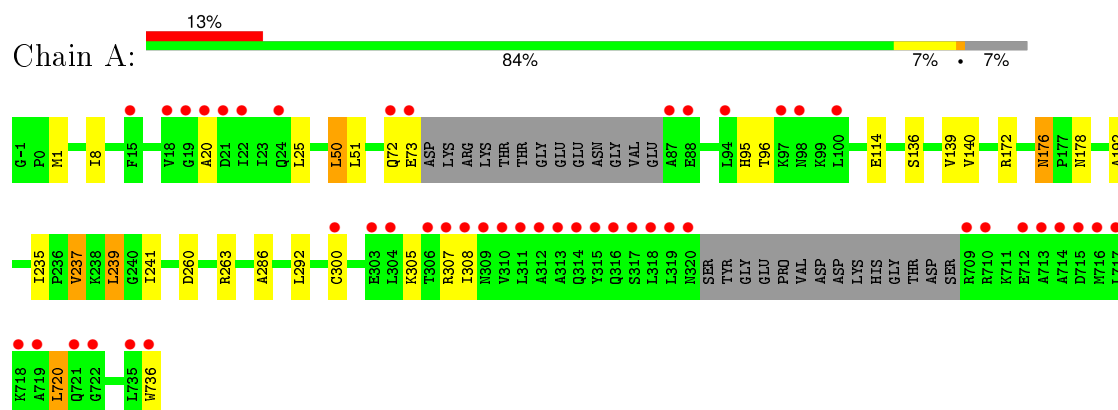
- Molecule 6 is water.

Mol	Chain	Residues	Atoms		ZeroOcc	AltConf
6	A	236	Total	O	0	0
			236	236		
6	B	303	Total	O	0	0
			303	303		

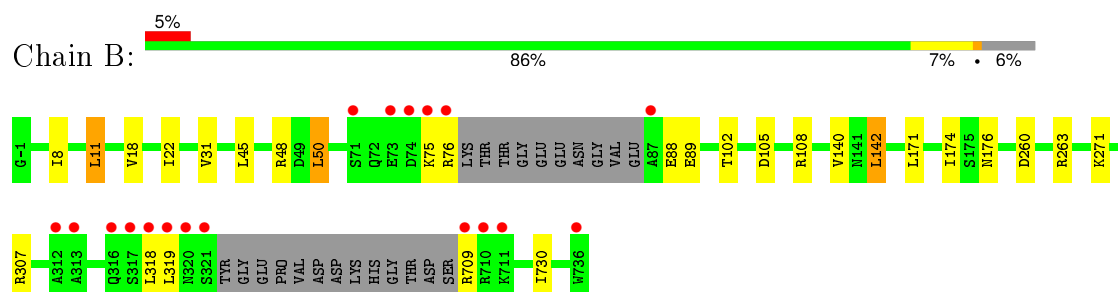
3 Residue-property plots [i](#)

These plots are drawn for all protein, RNA and DNA chains in the entry. The first graphic for a chain summarises the proportions of errors displayed in the second graphic. The second graphic shows the sequence view annotated by issues in geometry and electron density. Residues are color-coded according to the number of geometric quality criteria for which they contain at least one outlier: green = 0, yellow = 1, orange = 2 and red = 3 or more. A red dot above a residue indicates a poor fit to the electron density ($RSRZ > 2$). Stretches of 2 or more consecutive residues without any outlier are shown as a green connector. Residues present in the sample, but not in the model, are shown in grey.

• Molecule 1: Dynamin-1-like protein



• Molecule 1: Dynamin-1-like protein



4 Data and refinement statistics

Property	Value	Source
Space group	P 21 21 21	Depositor
Cell constants a, b, c, α , β , γ	51.24Å 109.07Å 128.30Å 90.00° 90.00° 90.00°	Depositor
Resolution (Å)	30.00 – 1.90 43.62 – 1.90	Depositor EDS
% Data completeness (in resolution range)	99.5 (30.00-1.90) 99.5 (43.62-1.90)	Depositor EDS
R_{merge}	0.07	Depositor
R_{sym}	(Not available)	Depositor
$\langle I/\sigma(I) \rangle$ ¹	4.56 (at 1.89Å)	Xtriage
Refinement program	REFMAC 5.5.0110	Depositor
R, R_{free}	0.183 , 0.225 0.183 , 0.224	Depositor DCC
R_{free} test set	2904 reflections (5.34%)	DCC
Wilson B-factor (Å ²)	16.7	Xtriage
Anisotropy	0.131	Xtriage
Bulk solvent k_{sol} (e/Å ³), B_{sol} (Å ²)	0.37 , 50.3	EDS
Estimated twinning fraction	No twinning to report.	Xtriage
L-test for twinning ²	$\langle L \rangle = 0.48$, $\langle L^2 \rangle = 0.31$	Xtriage
Outliers	0 of 57254 reflections	Xtriage
F_o, F_c correlation	0.94	EDS
Total number of atoms	5942	wwPDB-VP
Average B, all atoms (Å ²)	21.0	wwPDB-VP

Xtriage's analysis on translational NCS is as follows: *The analyses of the Patterson function reveals a significant off-origin peak that is 20.88 % of the origin peak, indicating pseudo translational symmetry. The chance of finding a peak of this or larger height randomly in a structure without pseudo translational symmetry is equal to 7.8943e-03.*

¹ Intensities estimated from amplitudes.

² Theoretical values of $\langle |L| \rangle$, $\langle L^2 \rangle$ for acentric reflections are 0.5, 0.375 respectively for untwinned datasets, and 0.333, 0.2 for perfectly twinned datasets.

5 Model quality

5.1 Standard geometry

Bond lengths and bond angles in the following residue types are not validated in this section: PG4, GCP, MG, CA

The Z score for a bond length (or angle) is the number of standard deviations the observed value is removed from the expected value. A bond length (or angle) with $|Z| > 5$ is considered an outlier worth inspection. RMSZ is the root-mean-square of all Z scores of the bond lengths (or angles).

Mol	Chain	Bond lengths		Bond angles	
		RMSZ	$\# Z > 5$	RMSZ	$\# Z > 5$
1	A	0.44	0/2672	0.58	0/3615
1	B	0.46	0/2706	0.60	0/3659
All	All	0.45	0/5378	0.59	0/7274

There are no bond length outliers.

There are no bond angle outliers.

There are no chirality outliers.

There are no planarity outliers.

5.2 Too-close contacts

In the following table, the Non-H and H(model) columns list the number of non-hydrogen atoms and hydrogen atoms in the chain respectively. The H(added) column lists the number of hydrogen atoms added and optimized by MolProbity. The Clashes column lists the number of clashes within the asymmetric unit, whereas Symm-Clashes lists symmetry related clashes.

Mol	Chain	Non-H	H(model)	H(added)	Clashes	Symm-Clashes
1	A	2638	0	2749	17	0
1	B	2672	0	2784	14	0
2	A	32	0	14	0	0
2	B	32	0	14	0	0
3	A	1	0	0	0	0
3	B	1	0	0	0	0
4	B	26	0	36	0	0
5	B	1	0	0	0	0
6	A	236	0	0	1	0
6	B	303	0	0	1	0
All	All	5942	0	5597	31	0

The all-atom clashscore is defined as the number of clashes found per 1000 atoms (including hydrogen atoms). The all-atom clashscore for this structure is 3.

All (31) close contacts within the same asymmetric unit are listed below, sorted by their clash magnitude.

Atom-1	Atom-2	Interatomic distance (Å)	Clash overlap (Å)
1:B:22:ILE:HD11	1:B:307:ARG:HG2	1.64	0.80
1:B:22:ILE:CD1	1:B:307:ARG:HG2	2.25	0.66
1:A:95:HIS:CE1	1:A:114:GLU:HG3	2.32	0.65
1:B:11:LEU:HD13	1:B:730:ILE:HD13	1.80	0.63
1:A:260:ASP:OD1	1:A:263:ARG:NH2	2.34	0.60
1:A:50:LEU:HD13	1:A:51:LEU:HG	1.86	0.58
1:A:1:MET:HG3	1:A:286:ALA:HB1	1.87	0.56
1:A:176:ASN:ND2	1:A:178:ASN:H	2.05	0.54
1:A:239:LEU:HG	1:A:292:LEU:HD21	1.90	0.53
1:A:192:ALA:HA	1:A:235:ILE:HD11	1.93	0.50
1:A:95:HIS:CD2	1:A:96:THR:HG23	2.47	0.50
1:B:50:LEU:H	1:B:50:LEU:HD12	1.77	0.50
1:B:8:ILE:HG21	6:B:1020:HOH:O	2.13	0.49
1:A:95:HIS:CE1	1:A:114:GLU:CG	2.97	0.48
1:B:260:ASP:OD1	1:B:263:ARG:NH1	2.41	0.48
1:B:31:VAL:HG11	1:B:174:ILE:HG21	1.94	0.48
1:B:75:LYS:HG2	1:B:76:ARG:H	1.79	0.48
1:A:305:LYS:HE3	6:A:1107:HOH:O	2.14	0.47
1:B:318:LEU:HD21	1:B:709:ARG:HE	1.79	0.47
1:A:308:ILE:HG23	1:A:720:LEU:HD12	1.96	0.47
1:B:140:VAL:HG23	1:B:142:LEU:HB2	1.97	0.46
1:B:88:GLU:HG3	1:B:89:GLU:HG3	1.97	0.46
1:A:8:ILE:HG13	1:A:140:VAL:CG2	2.47	0.45
1:B:18:VAL:HG11	1:B:22:ILE:CD1	2.46	0.45
1:A:20:ALA:HB2	1:A:307:ARG:NH1	2.32	0.45
1:A:8:ILE:HG13	1:A:140:VAL:HG21	2.00	0.44
1:A:237:VAL:HG13	1:A:241:ILE:HG12	1.99	0.44
1:A:136:SER:HB3	1:A:139:VAL:HG22	1.98	0.43
1:B:48:ARG:NH1	1:B:89:GLU:OE2	2.51	0.42
1:A:72:GLN:O	1:A:73:GLU:C	2.58	0.42
1:B:105:ASP:OD1	1:B:108:ARG:NH2	2.51	0.41

There are no symmetry-related clashes.

5.3 Torsion angles

5.3.1 Protein backbone

In the following table, the Percentiles column shows the percent Ramachandran outliers of the chain as a percentile score with respect to all X-ray entries followed by that with respect to entries of similar resolution.

The Analysed column shows the number of residues for which the backbone conformation was analysed, and the total number of residues.

Mol	Chain	Analysed	Favoured	Allowed	Outliers	Percentiles	
1	A	331/364 (91%)	319 (96%)	12 (4%)	0	100	100
1	B	335/364 (92%)	326 (97%)	9 (3%)	0	100	100
All	All	666/728 (92%)	645 (97%)	21 (3%)	0	100	100

There are no Ramachandran outliers to report.

5.3.2 Protein sidechains

In the following table, the Percentiles column shows the percent sidechain outliers of the chain as a percentile score with respect to all X-ray entries followed by that with respect to entries of similar resolution.

The Analysed column shows the number of residues for which the sidechain conformation was analysed, and the total number of residues.

Mol	Chain	Analysed	Rotameric	Outliers	Percentiles	
1	A	297/320 (93%)	288 (97%)	9 (3%)	48	38
1	B	301/320 (94%)	292 (97%)	9 (3%)	48	38
All	All	598/640 (93%)	580 (97%)	18 (3%)	48	38

All (18) residues with a non-rotameric sidechain are listed below:

Mol	Chain	Res	Type
1	A	25	LEU
1	A	50	LEU
1	A	172	ARG
1	A	176	ASN
1	A	237	VAL
1	A	239	LEU
1	A	300	CYS
1	A	720	LEU

Continued on next page...

Continued from previous page...

Mol	Chain	Res	Type
1	A	736	TRP
1	B	11	LEU
1	B	45	LEU
1	B	50	LEU
1	B	102	THR
1	B	142	LEU
1	B	171	LEU
1	B	176	ASN
1	B	271	LYS
1	B	319	LEU

Some sidechains can be flipped to improve hydrogen bonding and reduce clashes. All (9) such sidechains are listed below:

Mol	Chain	Res	Type
1	A	27	GLN
1	A	66	GLN
1	A	122	ASN
1	A	138	ASN
1	A	176	ASN
1	B	27	GLN
1	B	109	GLN
1	B	122	ASN
1	B	176	ASN

5.3.3 RNA [i](#)

There are no RNA molecules in this entry.

5.4 Non-standard residues in protein, DNA, RNA chains [i](#)

There are no non-standard protein/DNA/RNA residues in this entry.

5.5 Carbohydrates [i](#)

There are no carbohydrates in this entry.

5.6 Ligand geometry [i](#)

Of 7 ligands modelled in this entry, 3 are monoatomic - leaving 4 for Mogul analysis.

In the following table, the Counts columns list the number of bonds (or angles) for which Mogul statistics could be retrieved, the number of bonds (or angles) that are observed in the model and the number of bonds (or angles) that are defined in the chemical component dictionary. The Link column lists molecule types, if any, to which the group is linked. The Z score for a bond length (or angle) is the number of standard deviations the observed value is removed from the expected value. A bond length (or angle) with $|Z| > 2$ is considered an outlier worth inspection. RMSZ is the root-mean-square of all Z scores of the bond lengths (or angles).

Mol	Type	Chain	Res	Link	Bond lengths			Bond angles		
					Counts	RMSZ	$\# Z > 2$	Counts	RMSZ	$\# Z > 2$
2	GCP	A	801	3	26,34,34	1.28	4 (15%)	34,54,54	2.01	9 (26%)
2	GCP	B	801	3	26,34,34	1.40	4 (15%)	34,54,54	2.00	9 (26%)
4	PG4	B	803	-	12,12,12	0.42	0	11,11,11	0.37	0
4	PG4	B	804	-	12,12,12	0.49	0	11,11,11	0.20	0

In the following table, the Chirals column lists the number of chiral outliers, the number of chiral centers analysed, the number of these observed in the model and the number defined in the chemical component dictionary. Similar counts are reported in the Torsion and Rings columns. '-' means no outliers of that kind were identified.

Mol	Type	Chain	Res	Link	Chirals	Torsions	Rings
2	GCP	A	801	3	-	0/15/38/38	0/3/3/3
2	GCP	B	801	3	-	0/15/38/38	0/3/3/3
4	PG4	B	803	-	-	0/10/10/10	0/0/0/0
4	PG4	B	804	-	-	0/10/10/10	0/0/0/0

All (8) bond length outliers are listed below:

Mol	Chain	Res	Type	Atoms	Z	Observed(Å)	Ideal(Å)
2	A	801	GCP	PB-O2B	-2.44	1.50	1.56
2	A	801	GCP	PB-O3A	2.58	1.61	1.58
2	B	801	GCP	O4'-C1'	2.69	1.44	1.41
2	A	801	GCP	C5-C4	2.73	1.46	1.40
2	B	801	GCP	PB-O3A	2.81	1.61	1.58
2	B	801	GCP	C5-C4	2.85	1.46	1.40
2	B	801	GCP	C6-C5	2.99	1.47	1.41
2	A	801	GCP	C6-C5	3.05	1.47	1.41

All (18) bond angle outliers are listed below:

Mol	Chain	Res	Type	Atoms	Z	Observed(°)	Ideal(°)
2	B	801	GCP	C1'-N9-C4	-4.31	120.44	126.94
2	A	801	GCP	C6-C5-C4	-4.21	115.87	120.90
2	A	801	GCP	C5-C6-N1	-4.12	117.95	123.59

Continued on next page...

Continued from previous page...

Mol	Chain	Res	Type	Atoms	Z	Observed(°)	Ideal(°)
2	B	801	GCP	C6-C5-C4	-4.00	116.11	120.90
2	B	801	GCP	C5-C6-N1	-3.98	118.15	123.59
2	A	801	GCP	C1'-N9-C4	-3.92	121.03	126.94
2	B	801	GCP	N3-C2-N1	-3.48	122.14	127.44
2	A	801	GCP	N3-C2-N1	-3.28	122.45	127.44
2	A	801	GCP	O1G-PG-C3B	-3.26	103.70	111.13
2	B	801	GCP	O1G-PG-C3B	-2.71	104.96	111.13
2	A	801	GCP	C4-C5-N7	-2.02	107.62	109.48
2	B	801	GCP	N2-C2-N1	2.29	120.99	117.20
2	A	801	GCP	O3G-PG-O2G	2.38	115.09	108.13
2	B	801	GCP	O3G-PG-O2G	2.38	115.10	108.13
2	B	801	GCP	O2B-PB-O1B	2.51	118.01	110.12
2	A	801	GCP	O2B-PB-O1B	2.93	119.33	110.12
2	B	801	GCP	C6-N1-C2	5.01	122.90	115.94
2	A	801	GCP	C6-N1-C2	5.31	123.31	115.94

There are no chirality outliers.

There are no torsion outliers.

There are no ring outliers.

No monomer is involved in short contacts.

5.7 Other polymers [i](#)

There are no such residues in this entry.

5.8 Polymer linkage issues [i](#)

There are no chain breaks in this entry.

6 Fit of model and data ⓘ

6.1 Protein, DNA and RNA chains ⓘ

In the following table, the column labelled ‘#RSRZ> 2’ contains the number (and percentage) of RSRZ outliers, followed by percent RSRZ outliers for the chain as percentile scores relative to all X-ray entries and entries of similar resolution. The OWAB column contains the minimum, median, 95th percentile and maximum values of the occupancy-weighted average B-factor per residue. The column labelled ‘Q< 0.9’ lists the number of (and percentage) of residues with an average occupancy less than 0.9.

Mol	Chain	Analysed	<RSRZ>	#RSRZ>2	OWAB(Å ²)	Q<0.9
1	A	337/364 (92%)	0.65	47 (13%) 4 4	9, 18, 59, 71	0
1	B	341/364 (93%)	0.04	18 (5%) 30 33	7, 15, 37, 57	0
All	All	678/728 (93%)	0.34	65 (9%) 10 11	7, 16, 49, 71	0

All (65) RSRZ outliers are listed below:

Mol	Chain	Res	Type	RSRZ
1	A	320	ASN	9.8
1	A	736	TRP	9.3
1	B	319	LEU	8.9
1	A	87	ALA	8.6
1	A	311	LEU	7.3
1	B	320	ASN	6.6
1	A	315	TYR	6.4
1	B	87	ALA	6.3
1	B	321	SER	5.9
1	A	319	LEU	5.8
1	A	313	ALA	5.7
1	A	312	ALA	5.5
1	A	716	MET	5.5
1	B	76	ARG	5.2
1	A	73	GLU	5.2
1	A	310	VAL	5.1
1	B	710	ARG	5.1
1	A	735	LEU	4.8
1	B	73	GLU	4.8
1	B	318	LEU	4.8
1	B	313	ALA	4.8
1	A	717	LEU	4.6
1	A	98	ASN	4.6
1	A	316	GLN	4.5

Continued on next page...

Continued from previous page...

Mol	Chain	Res	Type	RSRZ
1	A	308	ILE	4.5
1	A	317	SER	4.5
1	A	307	ARG	4.4
1	A	712	GLU	4.3
1	A	715	ASP	4.3
1	A	709	ARG	4.2
1	A	18	VAL	4.2
1	B	709	ARG	4.2
1	A	300	CYS	4.2
1	A	309	ASN	3.9
1	B	74	ASP	3.9
1	A	710	ARG	3.8
1	A	72	GLN	3.8
1	B	312	ALA	3.8
1	A	88	GLU	3.7
1	A	318	LEU	3.7
1	A	21	ASP	3.7
1	A	303	GLU	3.5
1	A	24	GLN	3.5
1	B	75	LYS	3.5
1	A	714	ALA	3.4
1	A	97	LYS	3.3
1	B	711	LYS	3.2
1	A	304	LEU	3.2
1	A	22	ILE	3.1
1	A	20	ALA	3.0
1	A	15	PHE	2.9
1	B	736	TRP	2.9
1	A	718	LYS	2.7
1	A	306	THR	2.7
1	A	100	LEU	2.6
1	A	314	GLN	2.6
1	A	719	ALA	2.5
1	B	71	SER	2.4
1	A	19	GLY	2.4
1	B	317	SER	2.4
1	B	316	GLN	2.3
1	A	713	ALA	2.3
1	A	721	GLN	2.3
1	A	94	LEU	2.2
1	A	722	GLY	2.1

6.2 Non-standard residues in protein, DNA, RNA chains [i](#)

There are no non-standard protein/DNA/RNA residues in this entry.

6.3 Carbohydrates [i](#)

There are no carbohydrates in this entry.

6.4 Ligands [i](#)

In the following table, the Atoms column lists the number of modelled atoms in the group and the number defined in the chemical component dictionary. LLDF column lists the quality of electron density of the group with respect to its neighbouring residues in protein, DNA or RNA chains. The B-factors column lists the minimum, median, 95th percentile and maximum values of B factors of atoms in the group. The column labelled 'Q< 0.9' lists the number of atoms with occupancy less than 0.9.

Mol	Type	Chain	Res	Atoms	RSCC	RSR	LLDF	B-factors(Å ²)	Q<0.9
4	PG4	B	803	13/13	0.86	0.15	6.63	28,31,35,35	0
4	PG4	B	804	13/13	0.81	0.19	3.09	38,40,41,42	0
2	GCP	A	801	32/32	0.99	0.10	-0.06	6,8,10,10	0
2	GCP	B	801	32/32	0.98	0.07	-0.37	6,8,9,10	0
3	MG	A	802	1/1	0.98	0.06	-2.61	8,8,8,8	0
3	MG	B	802	1/1	0.99	0.04	-5.99	8,8,8,8	0
5	CA	B	805	1/1	1.00	0.04	-	20,20,20,20	0

6.5 Other polymers [i](#)

There are no such residues in this entry.