



Full wwPDB X-ray Structure Validation Report ⓘ

Feb 19, 2016 – 06:47 PM GMT

PDB ID : 3W7G
Title : Structure of Trypanosoma cruzi dihydroorotate dehydrogenase in complex with MII-5-013
Authors : Inaoka, D.K.; Iida, M.; Tabuchi, T.; Lee, N.; Hashimoto, S.; Matsuoka, S.; Kuranaga, T.; Shiba, T.; Sakamoto, K.; Suzuki, S.; Balogun, E.O.; Nara, T.; Aoki, T.; Inoue, M.; Honma, T.; Tanaka, A.; Harada, S.; Kita, K.
Deposited on : 2013-02-28
Resolution : 1.55 Å(reported)

This is a Full wwPDB X-ray Structure Validation Report for a publicly released PDB entry.
We welcome your comments at validation@mail.wwpdb.org
A user guide is available at
<http://wwpdb.org/validation/2016/XrayValidationReportHelp>
with specific help available everywhere you see the ⓘ symbol.

The following versions of software and data (see [references ⓘ](#)) were used in the production of this report:

MolProbity : 4.02b-467
Mogul : 1.7.1 (RC1), CSD as537be (2016)
Xtriage (Phenix) : 1.9-1692
EDS : rb-20026982
Percentile statistics : 20151230.v01 (using entries in the PDB archive December 30th 2015)
Refmac : 5.8.0135
CCP4 : 6.5.0
Ideal geometry (proteins) : Engh & Huber (2001)
Ideal geometry (DNA, RNA) : Parkinson et al. (1996)
Validation Pipeline (wwPDB-VP) : rb-20026982

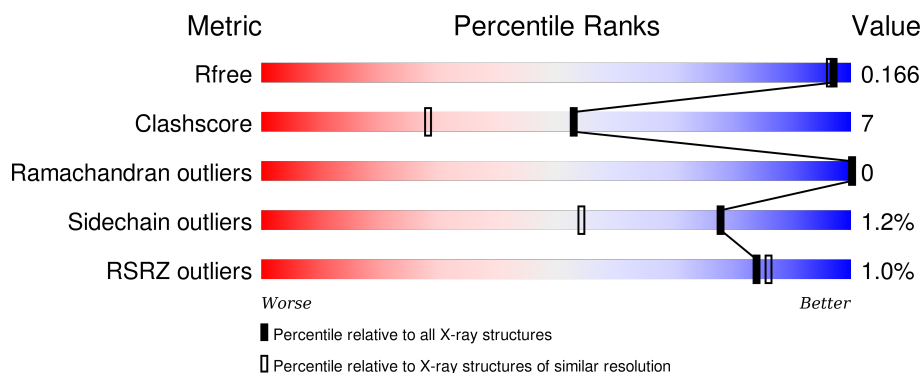
1 Overall quality at a glance

The following experimental techniques were used to determine the structure:

X-RAY DIFFRACTION



The reported resolution of this entry is 1.55 Å.

Percentile scores (ranging between 0-100) for global validation metrics of the entry are shown in the following graphic. The table shows the number of entries on which the scores are based.



Metric	Whole archive (#Entries)	Similar resolution (#Entries, resolution range(Å))
R_{free}	91344	1665 (1.58-1.54)
Clashscore	102246	1014 (1.56-1.56)
Ramachandran outliers	100387	1704 (1.58-1.54)
Sidechain outliers	100360	1702 (1.58-1.54)
RSRZ outliers	91569	1668 (1.58-1.54)

The table below summarises the geometric issues observed across the polymeric chains and their fit to the electron density. The red, orange, yellow and green segments on the lower bar indicate the fraction of residues that contain outliers for ≥ 3 , 2, 1 and 0 types of geometric quality criteria. A grey segment represents the fraction of residues that are not modelled. The numeric value for each fraction is indicated below the corresponding segment, with a dot representing fractions $\leq 5\%$. The upper red bar (where present) indicates the fraction of residues that have poor fit to the electron density. The numeric value is given above the bar.

Mol	Chain	Length	Quality of chain
1	A	313	 86% 13% •
1	B	313	 2% 87% 11% •

The following table lists non-polymeric compounds, carbohydrate monomers and non-standard residues in protein, DNA, RNA chains that are outliers for geometric or electron-density-fit criteria:

Mol	Type	Chain	Res	Chirality	Geometry	Clashes	Electron density
2	W7G	B	401[B]	-	-	X	-
3	GOL	A	403	-	-	-	X
3	GOL	A	404	-	-	-	X
3	GOL	B	403	-	-	-	X
3	GOL	B	406	-	-	-	X
3	GOL	B	407	-	-	X	X

2 Entry composition [i](#)

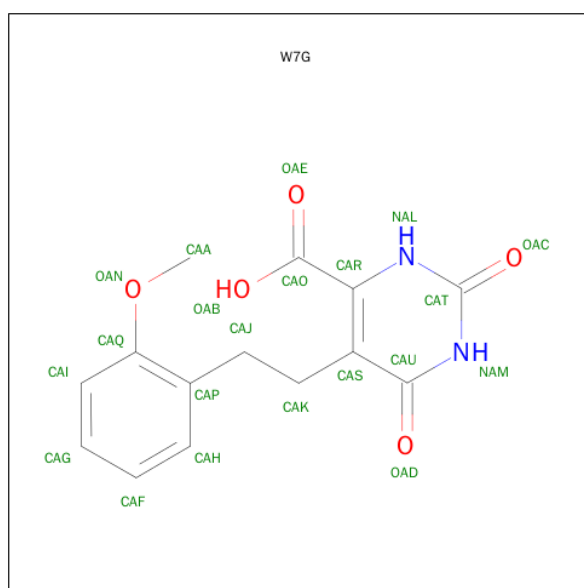
There are 6 unique types of molecules in this entry. The entry contains 5767 atoms, of which 0 are hydrogens and 0 are deuteriums.

In the tables below, the ZeroOcc column contains the number of atoms modelled with zero occupancy, the AltConf column contains the number of residues with at least one atom in alternate conformation and the Trace column contains the number of residues modelled with at most 2 atoms.

- Molecule 1 is a protein called Dihydroorotate dehydrogenase (fumarate).

Mol	Chain	Residues	Atoms					ZeroOcc	AltConf	Trace
1	A	313	Total	C	N	O	S	0	5	0
			2415	1547	402	448	18			
1	B	313	Total	C	N	O	S	0	3	0
			2402	1539	399	445	19			

- Molecule 2 is 5-[2-(2-METHOXYPHENYL)ETHYL]-2,6-DIOXO-1,2,3,6-TETRAHYDROPYRIMIDINE-4-CARBOXYLIC ACID (three-letter code: W7G) (formula: $C_{14}H_{14}N_2O_5$).



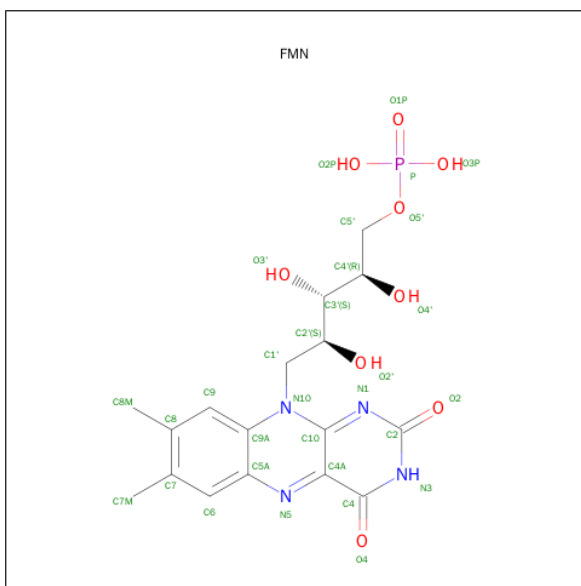
Mol	Chain	Residues	Atoms				ZeroOcc	AltConf
2	A	1	Total	C	N	O	0	0
			21	14	2	5		
2	B	1	Total	C	N	O	0	1
			42	28	4	10		

- Molecule 3 is GLYCEROL (three-letter code: GOL) (formula: $C_3H_8O_3$).



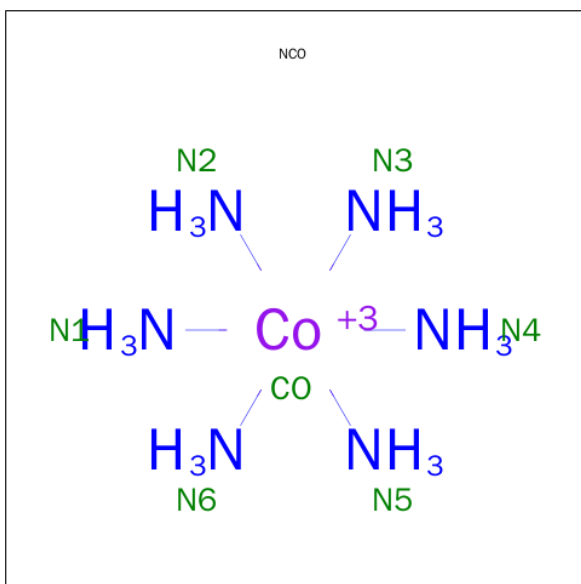
Mol	Chain	Residues	Atoms			ZeroOcc	AltConf
3	A	1	Total	C	O	0	0
			6	3	3		
3	A	1	Total	C	O	0	0
			6	3	3		
3	A	1	Total	C	O	0	0
			6	3	3		
3	A	1	Total	C	O	0	0
			6	3	3		
3	A	1	Total	C	O	0	0
			6	3	3		
3	A	1	Total	C	O	0	1
			12	6	6		
3	A	1	Total	C	O	0	0
			6	3	3		
3	A	1	Total	C	O	0	0
			6	3	3		
3	B	1	Total	C	O	0	0
			6	3	3		
3	B	1	Total	C	O	0	0
			6	3	3		
3	B	1	Total	C	O	0	0
			6	3	3		
3	B	1	Total	C	O	0	0
			6	3	3		
3	B	1	Total	C	O	0	0
			6	3	3		

- Molecule 4 is FLAVIN MONONUCLEOTIDE (three-letter code: FMN) (formula: $C_{17}H_{21}N_4O_9P$).



Mol	Chain	Residues	Atoms					ZeroOcc	AltConf
4	A	1	Total	C	N	O	P	0	0
			31	17	4	9	1		
4	B	1	Total	C	N	O	P	0	0
			31	17	4	9	1		

- Molecule 5 is COBALT HEXAMMINE(III) (three-letter code: NCO) (formula: $CoH_{18}N_6$).



Mol	Chain	Residues	Atoms			ZeroOcc	AltConf
5	A	1	Total	Co	N	0	0
			7	1	6		

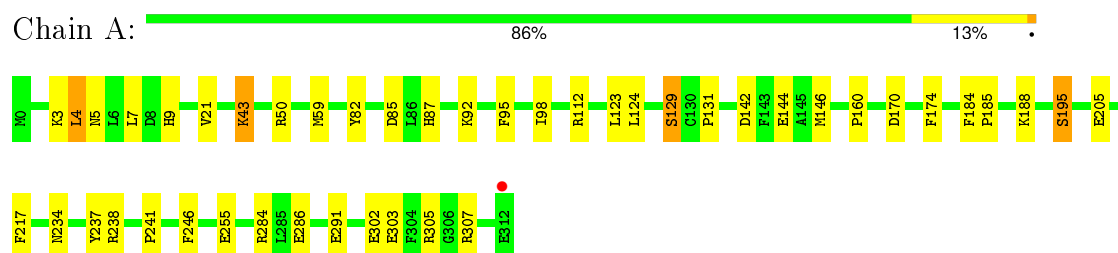
- Molecule 6 is water.

Mol	Chain	Residues	Atoms		ZeroOcc	AltConf
6	A	374	Total 374	O 374	0	0
6	B	354	Total 354	O 354	0	0

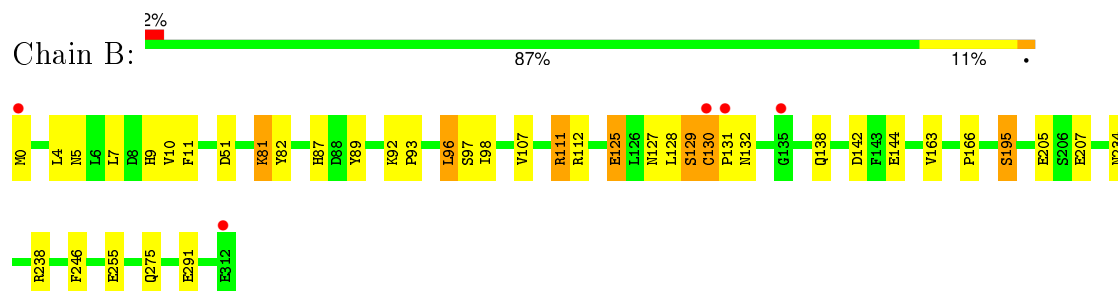
3 Residue-property plots [i](#)

These plots are drawn for all protein, RNA and DNA chains in the entry. The first graphic for a chain summarises the proportions of errors displayed in the second graphic. The second graphic shows the sequence view annotated by issues in geometry and electron density. Residues are color-coded according to the number of geometric quality criteria for which they contain at least one outlier: green = 0, yellow = 1, orange = 2 and red = 3 or more. A red dot above a residue indicates a poor fit to the electron density ($\text{RSRZ} > 2$). Stretches of 2 or more consecutive residues without any outlier are shown as a green connector. Residues present in the sample, but not in the model, are shown in grey.

- Molecule 1: Dihydroorotate dehydrogenase (fumarate)



- Molecule 1: Dihydroorotate dehydrogenase (fumarate)



4 Data and refinement statistics

Property	Value	Source
Space group	P 21 21 21	Depositor
Cell constants a, b, c, α , β , γ	67.95Å 71.83Å 129.24Å 90.00° 90.00° 90.00°	Depositor
Resolution (Å)	29.88 – 1.55 29.88 – 1.55	Depositor EDS
% Data completeness (in resolution range)	93.0 (29.88-1.55) 93.0 (29.88-1.55)	Depositor EDS
R_{merge}	0.06	Depositor
R_{sym}	(Not available)	Depositor
$\langle I/\sigma(I) \rangle$ ¹	4.79 (at 1.55Å)	Xtriage
Refinement program	REFMAC 5.7.0029	Depositor
R, R_{free}	0.137 , 0.165 0.138 , 0.166	Depositor DCC
R_{free} test set	4295 reflections (5.27%)	DCC
Wilson B-factor (Å ²)	11.5	Xtriage
Anisotropy	0.017	Xtriage
Bulk solvent k_{sol} (e/Å ³), B_{sol} (Å ²)	0.39 , 53.1	EDS
Estimated twinning fraction	No twinning to report.	Xtriage
L-test for twinning ²	$\langle L \rangle = 0.50$, $\langle L^2 \rangle = 0.33$	Xtriage
Outliers	0 of 85861 reflections	Xtriage
F_o, F_c correlation	0.97	EDS
Total number of atoms	5767	wwPDB-VP
Average B, all atoms (Å ²)	14.0	wwPDB-VP

Xtriage's analysis on translational NCS is as follows: *The analyses of the Patterson function reveals a significant off-origin peak that is 25.53 % of the origin peak, indicating pseudo translational symmetry. The chance of finding a peak of this or larger height randomly in a structure without pseudo translational symmetry is equal to 3.1173e-03. The detected translational NCS is most likely also responsible for the elevated intensity ratio.*

¹Intensities estimated from amplitudes.

²Theoretical values of $\langle |L| \rangle$, $\langle L^2 \rangle$ for acentric reflections are 0.5, 0.375 respectively for untwinned datasets, and 0.333, 0.2 for perfectly twinned datasets.

5 Model quality [i](#)

5.1 Standard geometry [i](#)

Bond lengths and bond angles in the following residue types are not validated in this section: FMN, GOL, W7G, NCO

The Z score for a bond length (or angle) is the number of standard deviations the observed value is removed from the expected value. A bond length (or angle) with $|Z| > 5$ is considered an outlier worth inspection. RMSZ is the root-mean-square of all Z scores of the bond lengths (or angles).

Mol	Chain	Bond lengths		Bond angles	
		RMSZ	# Z >5	RMSZ	# Z >5
1	A	1.26	14/2482 (0.6%)	1.17	14/3360 (0.4%)
1	B	1.24	6/2463 (0.2%)	1.13	9/3336 (0.3%)
All	All	1.25	20/4945 (0.4%)	1.15	23/6696 (0.3%)

Chiral center outliers are detected by calculating the chiral volume of a chiral center and verifying if the center is modelled as a planar moiety or with the opposite hand. A planarity outlier is detected by checking planarity of atoms in a peptide group, atoms in a mainchain group or atoms of a sidechain that are expected to be planar.

Mol	Chain	#Chirality outliers	#Planarity outliers
1	A	0	2
1	B	0	1
All	All	0	3

All (20) bond length outliers are listed below:

Mol	Chain	Res	Type	Atoms	Z	Observed(Å)	Ideal(Å)
1	B	255	GLU	CD-OE1	-7.42	1.17	1.25
1	A	205	GLU	CD-OE1	-6.15	1.18	1.25
1	A	21	VAL	C-O	-5.92	1.12	1.23
1	A	195	SER	CB-OG	-5.86	1.34	1.42
1	B	195	SER	CB-OG	-5.68	1.34	1.42
1	B	207	GLU	CD-OE1	-5.66	1.19	1.25
1	A	131	PRO	N-CD	5.65	1.55	1.47
1	A	286	GLU	CD-OE1	5.57	1.31	1.25
1	A	129[A]	SER	C-O	-5.47	1.12	1.23
1	A	129[B]	SER	C-O	-5.47	1.12	1.23
1	A	144	GLU	CD-OE2	5.33	1.31	1.25
1	A	303	GLU	CD-OE1	-5.33	1.19	1.25
1	B	205	GLU	CD-OE2	-5.32	1.19	1.25
1	B	144	GLU	CG-CD	5.30	1.59	1.51

Continued on next page...

Continued from previous page...

Mol	Chain	Res	Type	Atoms	Z	Observed(Å)	Ideal(Å)
1	A	255	GLU	CD-OE1	-5.28	1.19	1.25
1	A	246	PHE	C-O	-5.26	1.13	1.23
1	A	129[A]	SER	N-CA	5.15	1.56	1.46
1	A	129[B]	SER	N-CA	5.15	1.56	1.46
1	B	127	ASN	CG-OD1	-5.09	1.12	1.24
1	A	4	LEU	C-O	-5.08	1.13	1.23

All (23) bond angle outliers are listed below:

Mol	Chain	Res	Type	Atoms	Z	Observed(°)	Ideal(°)
1	A	3	LYS	CD-CE-NZ	8.36	130.92	111.70
1	A	4	LEU	CA-CB-CG	6.22	129.62	115.30
1	B	51	ASP	CB-CG-OD2	-6.22	112.70	118.30
1	A	246	PHE	CB-CG-CD1	6.06	125.04	120.80
1	A	246	PHE	CB-CG-CD2	-5.95	116.64	120.80
1	B	112	ARG	NE-CZ-NH2	-5.91	117.34	120.30
1	B	125	GLU	OE1-CD-OE2	-5.78	116.36	123.30
1	B	111	ARG	NE-CZ-NH2	-5.74	117.43	120.30
1	B	142	ASP	CB-CG-OD2	-5.73	113.14	118.30
1	B	246	PHE	CB-CG-CD2	-5.71	116.80	120.80
1	A	217	PHE	CB-CG-CD2	-5.69	116.82	120.80
1	B	11	PHE	CB-CG-CD1	5.62	124.74	120.80
1	A	284	ARG	NE-CZ-NH1	5.60	123.10	120.30
1	A	50	ARG	NE-CZ-NH1	5.53	123.06	120.30
1	A	195	SER	CB-CA-C	-5.47	99.70	110.10
1	A	43	LYS	CD-CE-NZ	-5.44	99.19	111.70
1	A	305	ARG	NE-CZ-NH1	5.42	123.01	120.30
1	B	4	LEU	CB-CG-CD1	5.28	119.97	111.00
1	A	146	MET	CG-SD-CE	-5.24	91.82	100.20
1	A	85	ASP	CB-CG-OD1	5.15	122.94	118.30
1	A	174	PHE	CB-CG-CD2	-5.10	117.23	120.80
1	B	96	LEU	CB-CG-CD2	-5.09	102.35	111.00
1	A	142	ASP	CB-CG-OD2	-5.06	113.74	118.30

There are no chirality outliers.

All (3) planarity outliers are listed below:

Mol	Chain	Res	Type	Group
1	A	129[A]	SER	Mainchain
1	A	129[B]	SER	Mainchain
1	B	129	SER	Peptide

5.2 Too-close contacts

In the following table, the Non-H and H(model) columns list the number of non-hydrogen atoms and hydrogen atoms in the chain respectively. The H(added) column lists the number of hydrogen atoms added and optimized by MolProbity. The Clashes column lists the number of clashes within the asymmetric unit, whereas Symm-Clashes lists symmetry related clashes.

Mol	Chain	Non-H	H(model)	H(added)	Clashes	Symm-Clashes
1	A	2415	0	2431	19	0
1	B	2402	0	2414	43	0
2	A	21	0	13	0	0
2	B	42	0	26	7	0
3	A	54	0	72	4	0
3	B	36	0	47	10	0
4	A	31	0	19	1	0
4	B	31	0	19	0	0
5	A	7	0	0	0	0
6	A	374	0	0	7	0
6	B	354	0	0	10	0
All	All	5767	0	5041	66	0

The all-atom clashscore is defined as the number of clashes found per 1000 atoms (including hydrogen atoms). The all-atom clashscore for this structure is 7.

All (66) close contacts within the same asymmetric unit are listed below, sorted by their clash magnitude.

Atom-1	Atom-2	Interatomic distance (Å)	Clash overlap (Å)
1:B:131:PRO:HG3	2:B:401[B]:W7G:CAA	1.74	1.17
1:B:131:PRO:HG3	2:B:401[B]:W7G:H14	1.22	1.09
1:B:132:ASN:HB2	6:B:839:HOH:O	1.61	0.97
1:B:131:PRO:CG	2:B:401[B]:W7G:H14	2.05	0.86
1:B:9:HIS:CE1	3:B:407:GOL:H32	2.11	0.84
1:B:128:LEU:HD12	1:B:163:VAL:HG11	1.63	0.80
1:B:128:LEU:HD12	1:B:163:VAL:CG1	2.12	0.80
1:A:241:PRO:HA	3:A:409:GOL:H32	1.68	0.74
1:B:131:PRO:HG3	2:B:401[B]:W7G:H12	1.69	0.74
1:B:128:LEU:CD1	1:B:163:VAL:HG11	2.19	0.71
1:B:9:HIS:ND1	3:B:407:GOL:H32	2.05	0.71
1:B:96:LEU:CD2	1:B:98:ILE:HD11	2.20	0.70
1:B:131:PRO:CG	2:B:401[B]:W7G:CAA	2.62	0.70
1:B:128:LEU:CD1	1:B:163:VAL:CG1	2.69	0.69
1:B:234:ASN:HD21	1:B:238:ARG:HE	1.38	0.69
1:A:7:LEU:O	1:A:9:HIS:HD2	1.76	0.69

Continued on next page...

Continued from previous page...

Atom-1	Atom-2	Interatomic distance (Å)	Clash overlap (Å)
1:A:234:ASN:HD21	1:A:238:ARG:HE	1.44	0.65
1:A:82:TYR:OH	1:A:87:HIS:HD2	1.82	0.62
1:B:81:LYS:HE3	6:B:737:HOH:O	2.03	0.58
1:B:9:HIS:CE1	3:B:407:GOL:C3	2.84	0.57
1:B:96:LEU:CD2	1:B:98:ILE:CD1	2.84	0.56
1:A:43:LYS:HE3	4:A:410:FMN:O4	2.05	0.56
1:B:81:LYS:CE	6:B:737:HOH:O	2.53	0.56
1:B:82:TYR:OH	1:B:87:HIS:HD2	1.88	0.56
3:B:407:GOL:C3	6:B:510:HOH:O	2.54	0.56
1:B:89:TYR:HB3	3:B:407:GOL:H11	1.88	0.55
1:B:195:SER:HB3	6:B:777:HOH:O	2.08	0.54
3:A:409:GOL:H31	6:A:571:HOH:O	2.09	0.53
1:A:87:HIS:HE1	1:A:92:LYS:O	1.92	0.53
1:B:0:MET:HE3	6:B:800:HOH:O	2.09	0.53
1:B:89:TYR:HD1	3:B:407:GOL:H31	1.73	0.52
1:B:234:ASN:ND2	1:B:238:ARG:HE	2.08	0.51
1:B:107:VAL:O	1:B:111:ARG:HG3	2.11	0.51
1:A:291:GLU:CD	6:A:770:HOH:O	2.48	0.50
1:A:237:TYR:O	3:A:409:GOL:H11	2.12	0.50
3:B:402:GOL:H12	6:B:699:HOH:O	2.10	0.50
1:B:130[B]:CYS:H	1:B:138:GLN:HE22	1.60	0.50
1:B:87:HIS:HE1	1:B:92:LYS:O	1.95	0.49
1:B:130[A]:CYS:H	1:B:138:GLN:HE22	1.61	0.49
3:B:407:GOL:H31	6:B:510:HOH:O	2.12	0.49
1:A:112:ARG:HD3	6:A:873:HOH:O	2.13	0.48
1:B:93:PRO:HA	3:B:407:GOL:H12	1.97	0.47
1:B:96:LEU:HD21	1:B:98:ILE:HD11	1.96	0.47
1:B:131:PRO:HD3	2:B:401[B]:W7G:OAN	2.15	0.45
1:B:7:LEU:O	1:B:9:HIS:HD2	1.99	0.45
1:A:170:ASP:OD2	1:B:138:GLN:HG2	2.17	0.45
1:B:128:LEU:CD1	1:B:163:VAL:HG13	2.47	0.45
1:B:5:ASN:OD1	1:B:10:VAL:HG22	2.16	0.44
1:A:302:GLU:OE2	3:A:403:GOL:C3	2.66	0.44
1:B:129:SER:C	1:B:130[B]:CYS:SG	2.93	0.43
2:B:401[B]:W7G:H11	2:B:401[B]:W7G:H14	1.57	0.43
1:A:160:PRO:HB3	1:A:188:LYS:HG3	2.01	0.43
1:B:97:SER:HA	1:B:125:GLU:O	2.18	0.43
1:A:59:MET:HE1	6:A:624:HOH:O	2.18	0.43
1:B:291:GLU:CD	6:B:611:HOH:O	2.57	0.42
1:A:95:PHE:HA	1:A:123:LEU:O	2.20	0.42
1:A:98:ILE:HG12	1:A:124:LEU:HD11	2.02	0.42

Continued on next page...

Continued from previous page...

Atom-1	Atom-2	Interatomic distance (Å)	Clash overlap (Å)
1:A:9:HIS:HE1	6:A:526:HOH:O	2.02	0.41
1:B:9:HIS:HE1	3:B:407:GOL:C3	2.34	0.41
1:B:96:LEU:HD22	1:B:98:ILE:HD11	2.00	0.41
1:B:81:LYS:HB2	1:B:81:LYS:HE2	1.90	0.41
1:A:59:MET:CE	6:A:624:HOH:O	2.70	0.40
1:A:307[B]:ARG:NH2	6:A:859:HOH:O	2.53	0.40
1:B:275:GLN:NE2	6:B:606:HOH:O	2.50	0.40
1:A:184:PHE:HA	1:A:185:PRO:HD2	1.97	0.40
1:B:128:LEU:HD11	1:B:163:VAL:HG11	2.01	0.40

There are no symmetry-related clashes.

5.3 Torsion angles [i](#)

5.3.1 Protein backbone [i](#)

In the following table, the Percentiles column shows the percent Ramachandran outliers of the chain as a percentile score with respect to all X-ray entries followed by that with respect to entries of similar resolution.

The Analysed column shows the number of residues for which the backbone conformation was analysed, and the total number of residues.

Mol	Chain	Analysed	Favoured	Allowed	Outliers	Percentiles	
1	A	316/313 (101%)	307 (97%)	9 (3%)	0	100	100
1	B	314/313 (100%)	308 (98%)	6 (2%)	0	100	100
All	All	630/626 (101%)	615 (98%)	15 (2%)	0	100	100

There are no Ramachandran outliers to report.

5.3.2 Protein sidechains [i](#)

In the following table, the Percentiles column shows the percent sidechain outliers of the chain as a percentile score with respect to all X-ray entries followed by that with respect to entries of similar resolution.

The Analysed column shows the number of residues for which the sidechain conformation was analysed, and the total number of residues.

Mol	Chain	Analysed	Rotameric	Outliers	Percentiles	
1	A	263/258 (102%)	260 (99%)	3 (1%)	80	58
1	B	261/258 (101%)	257 (98%)	4 (2%)	72	44
All	All	524/516 (102%)	517 (99%)	7 (1%)	78	51

All (7) residues with a non-rotameric sidechain are listed below:

Mol	Chain	Res	Type
1	A	4	LEU
1	A	5	ASN
1	A	195	SER
1	B	81	LYS
1	B	130[A]	CYS
1	B	130[B]	CYS
1	B	166	PRO

Some sidechains can be flipped to improve hydrogen bonding and reduce clashes. All (15) such sidechains are listed below:

Mol	Chain	Res	Type
1	A	5	ASN
1	A	9	HIS
1	A	87	HIS
1	A	118	GLN
1	A	132	ASN
1	A	152	GLN
1	A	215	GLN
1	A	234	ASN
1	B	9	HIS
1	B	87	HIS
1	B	138	GLN
1	B	152	GLN
1	B	215	GLN
1	B	234	ASN
1	B	275	GLN

5.3.3 RNA ⓘ

There are no RNA molecules in this entry.

5.4 Non-standard residues in protein, DNA, RNA chains ⓘ

There are no non-standard protein/DNA/RNA residues in this entry.

5.5 Carbohydrates ⓘ

There are no carbohydrates in this entry.

5.6 Ligand geometry ⓘ

21 ligands are modelled in this entry.

In the following table, the Counts columns list the number of bonds (or angles) for which Mogul statistics could be retrieved, the number of bonds (or angles) that are observed in the model and the number of bonds (or angles) that are defined in the chemical component dictionary. The Link column lists molecule types, if any, to which the group is linked. The Z score for a bond length (or angle) is the number of standard deviations the observed value is removed from the expected value. A bond length (or angle) with $|Z| > 2$ is considered an outlier worth inspection. RMSZ is the root-mean-square of all Z scores of the bond lengths (or angles).

Mol	Type	Chain	Res	Link	Bond lengths			Bond angles		
					Counts	RMSZ	# $ Z > 2$	Counts	RMSZ	# $ Z > 2$
2	W7G	A	401	-	17,22,22	2.29	8 (47%)	17,30,30	3.92	7 (41%)
3	GOL	A	402	-	5,5,5	0.62	0	5,5,5	1.98	2 (40%)
3	GOL	A	403	-	5,5,5	0.63	0	5,5,5	0.72	0
3	GOL	A	404	-	5,5,5	0.88	0	5,5,5	0.82	0
3	GOL	A	405	-	5,5,5	0.42	0	5,5,5	0.58	0
3	GOL	A	406	-	5,5,5	0.26	0	5,5,5	0.42	0
3	GOL	A	407[A]	-	5,5,5	0.65	0	5,5,5	0.59	0
3	GOL	A	407[B]	-	5,5,5	0.64	0	5,5,5	0.46	0
3	GOL	A	408	-	5,5,5	0.40	0	5,5,5	0.58	0
3	GOL	A	409	-	5,5,5	0.41	0	5,5,5	0.80	0
4	FMN	A	410	-	32,33,33	1.55	8 (25%)	34,50,50	2.14	6 (17%)
5	NCO	A	411	-	6,6,6	3.13	6 (100%)	0,15,15	0.00	-
2	W7G	B	401[A]	-	17,22,22	2.31	7 (41%)	17,30,30	2.79	6 (35%)
2	W7G	B	401[B]	-	17,22,22	2.19	6 (35%)	17,30,30	3.32	8 (47%)
3	GOL	B	402	-	5,5,5	0.42	0	5,5,5	0.46	0
3	GOL	B	403	-	5,5,5	1.25	1 (20%)	5,5,5	1.34	1 (20%)
3	GOL	B	404	-	5,5,5	0.41	0	5,5,5	0.32	0
3	GOL	B	405	-	5,5,5	0.64	0	5,5,5	0.35	0
3	GOL	B	406	-	5,5,5	0.75	0	5,5,5	1.24	0
3	GOL	B	407	-	5,5,5	0.76	0	5,5,5	1.56	1 (20%)
4	FMN	B	408	-	32,33,33	1.29	5 (15%)	34,50,50	2.36	9 (26%)

In the following table, the Chirals column lists the number of chiral outliers, the number of chiral centers analysed, the number of these observed in the model and the number defined in the chemical component dictionary. Similar counts are reported in the Torsion and Rings columns. '-' means no outliers of that kind were identified.

Mol	Type	Chain	Res	Link	Chirals	Torsions	Rings
2	W7G	A	401	-	-	0/7/11/11	0/2/2/2
3	GOL	A	402	-	-	0/4/4/4	0/0/0/0
3	GOL	A	403	-	-	0/4/4/4	0/0/0/0
3	GOL	A	404	-	-	0/4/4/4	0/0/0/0
3	GOL	A	405	-	-	0/4/4/4	0/0/0/0
3	GOL	A	406	-	-	0/4/4/4	0/0/0/0
3	GOL	A	407[A]	-	-	0/4/4/4	0/0/0/0
3	GOL	A	407[B]	-	-	0/4/4/4	0/0/0/0
3	GOL	A	408	-	-	0/4/4/4	0/0/0/0
3	GOL	A	409	-	-	0/4/4/4	0/0/0/0
4	FMN	A	410	-	-	0/18/18/18	0/3/3/3
5	NCO	A	411	-	-	0/0/0/0	0/0/0/0
2	W7G	B	401[A]	-	-	0/7/11/11	0/2/2/2
2	W7G	B	401[B]	-	-	0/7/11/11	0/2/2/2
3	GOL	B	402	-	-	0/4/4/4	0/0/0/0
3	GOL	B	403	-	-	0/4/4/4	0/0/0/0
3	GOL	B	404	-	-	0/4/4/4	0/0/0/0
3	GOL	B	405	-	-	0/4/4/4	0/0/0/0
3	GOL	B	406	-	-	0/4/4/4	0/0/0/0
3	GOL	B	407	-	-	0/4/4/4	0/0/0/0
4	FMN	B	408	-	-	0/18/18/18	0/3/3/3

All (41) bond length outliers are listed below:

Mol	Chain	Res	Type	Atoms	Z	Observed(Å)	Ideal(Å)
2	B	401[B]	W7G	CAJ-CAP	-5.22	1.42	1.51
2	A	401	W7G	CAK-CAS	-4.49	1.46	1.52
2	B	401[A]	W7G	CAJ-CAP	-4.32	1.44	1.51
4	A	410	FMN	C1'-N10	-3.96	1.44	1.48
2	B	401[A]	W7G	CAK-CAS	-3.27	1.47	1.52
2	A	401	W7G	CAJ-CAP	-2.95	1.46	1.51
4	B	408	FMN	C6-C5A	-2.88	1.37	1.41
2	B	401[B]	W7G	OAN-CAQ	-2.82	1.32	1.37
4	B	408	FMN	C1'-N10	-2.58	1.45	1.48
4	B	408	FMN	C2-N1	-2.51	1.33	1.38
2	B	401[B]	W7G	CAR-CAS	-2.30	1.37	1.41
2	B	401[A]	W7G	CAR-CAS	-2.26	1.37	1.41
4	A	410	FMN	C6-C5A	-2.18	1.38	1.41
2	A	401	W7G	CAR-CAS	-2.18	1.37	1.41

Continued on next page...

Continued from previous page...

Mol	Chain	Res	Type	Atoms	Z	Observed(Å)	Ideal(Å)
4	A	410	FMN	C2-N3	-2.15	1.33	1.38
4	B	408	FMN	C2'-C3'	-2.06	1.49	1.53
4	A	410	FMN	C10-N1	-2.05	1.32	1.35
4	B	408	FMN	O4-C4	2.04	1.29	1.24
2	A	401	W7G	CAQ-CAP	2.09	1.43	1.40
2	B	401[A]	W7G	CAI-CAQ	2.14	1.44	1.39
2	A	401	W7G	CAR-NAL	2.16	1.38	1.34
4	A	410	FMN	C5A-N5	2.19	1.38	1.35
2	B	401[B]	W7G	CAF-CAH	2.33	1.43	1.38
2	A	401	W7G	OAN-CAA	2.34	1.50	1.42
4	A	410	FMN	C4A-N5	2.38	1.37	1.33
5	A	411	NCO	CO-N2	2.39	2.05	1.96
5	A	411	NCO	CO-N4	2.63	2.06	1.96
3	B	403	GOL	O2-C2	2.64	1.51	1.43
2	B	401[A]	W7G	OAN-CAA	2.66	1.50	1.42
4	A	410	FMN	C4A-C10	2.72	1.45	1.40
2	A	401	W7G	CAH-CAP	2.77	1.44	1.39
4	A	410	FMN	C5'-C4'	2.80	1.56	1.51
5	A	411	NCO	CO-N5	3.09	2.08	1.96
2	B	401[A]	W7G	CAR-NAL	3.38	1.40	1.34
5	A	411	NCO	CO-N1	3.39	2.09	1.96
5	A	411	NCO	CO-N3	3.52	2.09	1.96
5	A	411	NCO	CO-N6	3.57	2.10	1.96
2	B	401[B]	W7G	CAR-NAL	3.63	1.40	1.34
2	B	401[B]	W7G	CAU-NAM	4.13	1.40	1.33
2	B	401[A]	W7G	CAU-NAM	4.88	1.41	1.33
2	A	401	W7G	CAU-NAM	5.11	1.42	1.33

All (40) bond angle outliers are listed below:

Mol	Chain	Res	Type	Atoms	Z	Observed(°)	Ideal(°)
2	B	401[B]	W7G	CAA-OAN-CAQ	-7.55	106.52	117.53
2	A	401	W7G	NAM-CAT-NAL	-6.48	116.78	127.69
4	A	410	FMN	C4-C4A-C10	-5.70	116.29	119.94
2	B	401[A]	W7G	NAM-CAT-NAL	-4.95	119.35	127.69
2	B	401[B]	W7G	NAM-CAT-NAL	-4.93	119.39	127.69
4	B	408	FMN	C4A-C4-N3	-4.86	117.17	123.52
4	A	410	FMN	C4A-C10-N10	-3.83	117.73	120.52
4	B	408	FMN	N3-C2-N1	-3.79	121.32	127.69
4	B	408	FMN	C4A-C10-N10	-3.74	117.80	120.52
2	A	401	W7G	OAN-CAQ-CAP	-3.45	111.46	115.84
2	A	401	W7G	CAH-CAP-CAQ	-3.42	113.75	118.38

Continued on next page...

Continued from previous page...

Mol	Chain	Res	Type	Atoms	Z	Observed(°)	Ideal(°)
4	B	408	FMN	C4-C4A-C10	-3.30	117.83	119.94
2	B	401[B]	W7G	OAN-CAQ-CAI	-3.23	118.94	124.35
2	B	401[A]	W7G	CAJ-CAK-CAS	-3.15	106.94	112.47
4	A	410	FMN	C4A-C4-N3	-3.14	119.42	123.52
4	A	410	FMN	N3-C2-N1	-3.12	122.44	127.69
3	B	407	GOL	C3-C2-C1	-2.86	99.00	111.06
2	B	401[A]	W7G	OAN-CAQ-CAP	-2.74	112.36	115.84
2	A	401	W7G	CAS-CAR-NAL	-2.59	118.82	122.66
3	A	402	GOL	O2-C2-C1	-2.35	97.16	108.47
4	B	408	FMN	C7M-C7-C8	-2.30	115.78	120.73
2	B	401[B]	W7G	CAH-CAP-CAQ	-2.27	115.30	118.38
2	B	401[B]	W7G	CAJ-CAK-CAS	-2.26	108.50	112.47
2	B	401[A]	W7G	CAK-CAJ-CAP	-2.26	109.25	112.77
2	A	401	W7G	CAJ-CAP-CAH	2.23	124.04	119.47
4	A	410	FMN	C5A-C9A-N10	2.37	119.35	117.58
3	B	403	GOL	O2-C2-C3	2.53	120.63	108.47
3	A	402	GOL	O2-C2-C3	2.55	120.70	108.47
4	B	408	FMN	C4A-N5-C5A	2.83	120.06	116.72
2	B	401[B]	W7G	CAI-CAQ-CAP	2.91	125.11	120.17
4	B	408	FMN	C8M-C8-C7	3.06	127.30	120.73
4	B	408	FMN	C1'-N10-C9A	3.10	122.42	118.83
2	B	401[A]	W7G	CAT-NAL-CAR	4.76	120.45	115.68
2	B	401[B]	W7G	CAT-NAL-CAR	4.84	120.53	115.68
2	B	401[B]	W7G	CAU-NAM-CAT	6.66	120.71	115.16
2	B	401[A]	W7G	CAU-NAM-CAT	7.27	121.23	115.16
2	A	401	W7G	CAT-NAL-CAR	7.60	123.29	115.68
4	A	410	FMN	C4-N3-C2	7.75	121.63	115.16
4	B	408	FMN	C4-N3-C2	8.87	122.56	115.16
2	A	401	W7G	CAU-NAM-CAT	10.86	124.22	115.16

There are no chirality outliers.

There are no torsion outliers.

There are no ring outliers.

6 monomers are involved in 22 short contacts:

Mol	Chain	Res	Type	Clashes	Symm-Clashes
3	A	403	GOL	1	0
3	A	409	GOL	3	0
4	A	410	FMN	1	0
2	B	401[B]	W7G	7	0
3	B	402	GOL	1	0

Continued on next page...

Continued from previous page...

Mol	Chain	Res	Type	Clashes	Symm-Clashes
3	B	407	GOL	9	0

5.7 Other polymers [i](#)

There are no such residues in this entry.

5.8 Polymer linkage issues [i](#)

There are no chain breaks in this entry.

6 Fit of model and data [i](#)

6.1 Protein, DNA and RNA chains [i](#)

In the following table, the column labelled ‘#RSRZ> 2’ contains the number (and percentage) of RSRZ outliers, followed by percent RSRZ outliers for the chain as percentile scores relative to all X-ray entries and entries of similar resolution. The OWAB column contains the minimum, median, 95th percentile and maximum values of the occupancy-weighted average B-factor per residue. The column labelled ‘Q< 0.9’ lists the number of (and percentage) of residues with an average occupancy less than 0.9.

Mol	Chain	Analysed	<RSRZ>	#RSRZ>2	OWAB(Å ²)	Q<0.9
1	A	313/313 (100%)	-0.45	1 (0%) 94 95	6, 10, 20, 41	0
1	B	313/313 (100%)	-0.29	5 (1%) 74 77	6, 11, 25, 46	0
All	All	626/626 (100%)	-0.37	6 (0%) 84 86	6, 11, 24, 46	0

All (6) RSRZ outliers are listed below:

Mol	Chain	Res	Type	RSRZ
1	B	131	PRO	5.0
1	B	135	GLY	3.4
1	A	312	GLU	2.7
1	B	312	GLU	2.5
1	B	130[A]	CYS	2.4
1	B	0	MET	2.0

6.2 Non-standard residues in protein, DNA, RNA chains [i](#)

There are no non-standard protein/DNA/RNA residues in this entry.

6.3 Carbohydrates [i](#)

There are no carbohydrates in this entry.

6.4 Ligands [i](#)

In the following table, the Atoms column lists the number of modelled atoms in the group and the number defined in the chemical component dictionary. LLDF column lists the quality of electron density of the group with respect to its neighbouring residues in protein, DNA or RNA chains. The B-factors column lists the minimum, median, 95th percentile and maximum values of B factors

of atoms in the group. The column labelled 'Q< 0.9' lists the number of atoms with occupancy less than 0.9.

Mol	Type	Chain	Res	Atoms	RSCC	RSR	LLDF	B-factors(Å ²)	Q<0.9
3	GOL	B	406	6/6	0.80	0.20	15.47	31,35,36,39	0
3	GOL	B	407	6/6	0.89	0.33	10.85	25,35,38,41	0
3	GOL	B	403	6/6	0.85	0.15	5.10	27,32,37,42	0
3	GOL	A	404	6/6	0.90	0.12	5.03	27,29,32,32	0
3	GOL	A	403	6/6	0.86	0.19	3.13	23,28,32,39	0
5	NCO	A	411	7/7	0.99	0.07	1.37	10,10,12,12	0
3	GOL	A	407[A]	6/6	0.98	0.06	1.06	12,15,16,17	6
3	GOL	A	406	6/6	0.79	0.16	1.06	55,55,59,62	0
3	GOL	A	407[B]	6/6	0.98	0.06	0.93	12,14,15,16	6
4	FMN	A	410	31/31	0.98	0.07	0.17	6,7,9,14	0
2	W7G	B	401[A]	21/21	0.96	0.08	-0.26	8,10,12,13	21
2	W7G	B	401[B]	21/21	0.96	0.08	-0.30	9,10,16,20	21
3	GOL	B	405	6/6	0.95	0.07	-0.52	16,17,19,20	0
4	FMN	B	408	31/31	0.99	0.06	-0.53	6,7,9,12	0
2	W7G	A	401	21/21	0.97	0.06	-0.82	8,9,11,12	0
3	GOL	A	408	6/6	0.97	0.05	-1.60	15,17,19,21	0
3	GOL	B	402	6/6	0.82	0.16	-	28,44,46,50	0
3	GOL	A	405	6/6	0.92	0.12	-	23,26,28,31	0
3	GOL	B	404	6/6	0.78	0.17	-	33,39,42,44	0
3	GOL	A	409	6/6	0.81	0.18	-	36,40,43,44	0
3	GOL	A	402	6/6	0.82	0.14	-	29,37,39,39	0

6.5 Other polymers ⓘ

There are no such residues in this entry.