



# Full wwPDB X-ray Structure Validation Report ⓘ

Feb 19, 2016 – 06:42 PM GMT

PDB ID : 3W7L  
Title : Structure of Trypanosoma cruzi dihydroorotate dehydrogenase in complex with MII-5-075  
Authors : Inaoka, D.K.; Iida, M.; Tabuchi, T.; Lee, N.; Hashimoto, S.; Matsuoka, S.; Kuranaga, T.; Shiba, T.; Sakamoto, K.; Suzuki, S.; Balogun, E.O.; Nara, T.; Aoki, T.; Inoue, M.; Honma, T.; Tanaka, A.; Harada, S.; Kita, K.  
Deposited on : 2013-03-02  
Resolution : 1.88 Å(reported)

This is a Full wwPDB X-ray Structure Validation Report for a publicly released PDB entry.  
We welcome your comments at [validation@mail.wwpdb.org](mailto:validation@mail.wwpdb.org)  
A user guide is available at  
<http://wwpdb.org/validation/2016/XrayValidationReportHelp>  
with specific help available everywhere you see the ⓘ symbol.

---

The following versions of software and data (see [references ⓘ](#)) were used in the production of this report:

MolProbity : 4.02b-467  
Mogul : 1.7.1 (RC1), CSD as537be (2016)  
Xtriage (Phenix) : 1.9-1692  
EDS : rb-20026982  
Percentile statistics : 20151230.v01 (using entries in the PDB archive December 30th 2015)  
Refmac : 5.8.0135  
CCP4 : 6.5.0  
Ideal geometry (proteins) : Engh & Huber (2001)  
Ideal geometry (DNA, RNA) : Parkinson et al. (1996)  
Validation Pipeline (wwPDB-VP) : rb-20026982

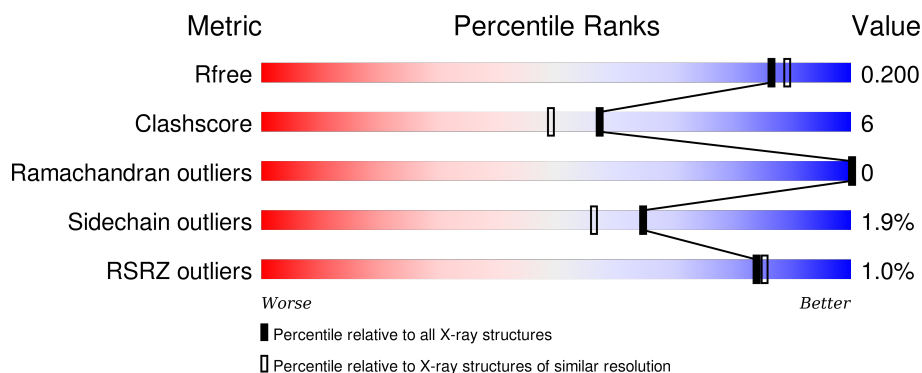
# 1 Overall quality at a glance

The following experimental techniques were used to determine the structure:

## *X-RAY DIFFRACTION*

The reported resolution of this entry is 1.88 Å.

Percentile scores (ranging between 0-100) for global validation metrics of the entry are shown in the following graphic. The table shows the number of entries on which the scores are based.



Metric	Whole archive (#Entries)	Similar resolution (#Entries, resolution range(Å))
$R_{free}$	91344	6965 (1.90-1.86)
Clashscore	102246	7778 (1.90-1.86)
Ramachandran outliers	100387	7691 (1.90-1.86)
Sidechain outliers	100360	7692 (1.90-1.86)
RSRZ outliers	91569	6979 (1.90-1.86)

The table below summarises the geometric issues observed across the polymeric chains and their fit to the electron density. The red, orange, yellow and green segments on the lower bar indicate the fraction of residues that contain outliers for  $\geq 3$ , 2, 1 and 0 types of geometric quality criteria. A grey segment represents the fraction of residues that are not modelled. The numeric value for each fraction is indicated below the corresponding segment, with a dot representing fractions  $\leq 5\%$ . The upper red bar (where present) indicates the fraction of residues that have poor fit to the electron density. The numeric value is given above the bar.

Mol	Chain	Length	Quality of chain
1	A	313	<div> <div></div> <div>88% 11% .</div> </div>
1	B	313	<div> <div></div> <div>83% 16% .</div> </div>

The following table lists non-polymeric compounds, carbohydrate monomers and non-standard residues in protein, DNA, RNA chains that are outliers for geometric or electron-density-fit criteria:

Mol	Type	Chain	Res	Chirality	Geometry	Clashes	Electron density
3	GOL	A	402[A]	-	-	-	X
3	GOL	A	402[B]	-	-	-	X
3	GOL	A	403	-	-	-	X
3	GOL	A	406	-	-	-	X
3	GOL	A	407	-	-	-	X
3	GOL	A	408	-	-	-	X
3	GOL	A	410	-	-	-	X
3	GOL	B	402	-	-	-	X
3	GOL	B	403	-	-	-	X
3	GOL	B	404	-	-	-	X
3	GOL	B	405	-	-	X	X
3	GOL	B	406	-	-	-	X
3	GOL	B	407	-	-	-	X
3	GOL	B	408	-	-	-	X
3	GOL	B	411	-	-	-	X

## 2 Entry composition [i](#)

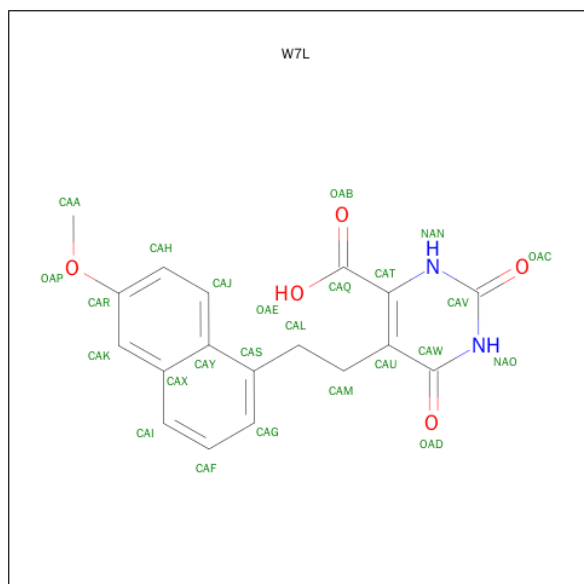
There are 6 unique types of molecules in this entry. The entry contains 5572 atoms, of which 0 are hydrogens and 0 are deuteriums.

In the tables below, the ZeroOcc column contains the number of atoms modelled with zero occupancy, the AltConf column contains the number of residues with at least one atom in alternate conformation and the Trace column contains the number of residues modelled with at most 2 atoms.

- Molecule 1 is a protein called Dihydroorotate dehydrogenase (fumarate).

Mol	Chain	Residues	Atoms					ZeroOcc	AltConf	Trace
1	A	313	Total	C	N	O	S	0	3	0
			2414	1544	402	450	18			
1	B	313	Total	C	N	O	S	0	0	0
			2388	1530	396	444	18			

- Molecule 2 is 5-[2-(6-METHOXYNAPHTHALEN-1-YL)ETHYL]-2,6-DIOXO-1,2,3,6-TETRAHYDROPYRIMIDINE-4-CARBOXYLIC ACID (three-letter code: W7L) (formula:  $C_{18}H_{16}N_2O_5$ ).



Mol	Chain	Residues	Atoms				ZeroOcc	AltConf
2	A	1	Total	C	N	O	0	0
			25	18	2	5		
2	B	1	Total	C	N	O	0	0
			25	18	2	5		

- Molecule 3 is GLYCEROL (three-letter code: GOL) (formula:  $C_3H_8O_3$ ).



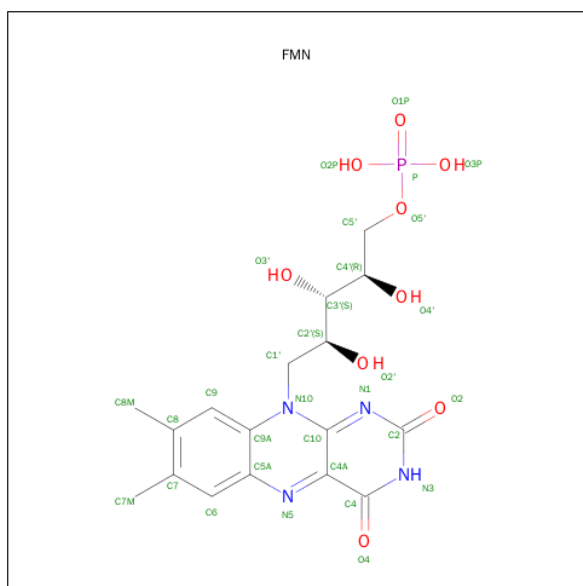
Mol	Chain	Residues	Atoms			ZeroOcc	AltConf
3	A	1	Total	C	O	0	1
			12	6	6		
3	A	1	Total	C	O	0	0
			6	3	3		
3	A	1	Total	C	O	0	0
			6	3	3		
3	A	1	Total	C	O	0	0
			6	3	3		
3	A	1	Total	C	O	0	0
			6	3	3		
3	A	1	Total	C	O	0	0
			6	3	3		
3	A	1	Total	C	O	0	0
			6	3	3		
3	B	1	Total	C	O	0	0
			6	3	3		
3	B	1	Total	C	O	0	0
			6	3	3		
3	B	1	Total	C	O	0	0
			6	3	3		
3	B	1	Total	C	O	0	0
			6	3	3		

*Continued on next page...*

Continued from previous page...

Mol	Chain	Residues	Atoms			ZeroOcc	AltConf
3	B	1	Total	C	O	0	0
			6	3	3		
3	B	1	Total	C	O	0	0
			6	3	3		
3	B	1	Total	C	O	0	0
			6	3	3		
3	B	1	Total	C	O	0	0
			6	3	3		
3	B	1	Total	C	O	0	0
			6	3	3		

- Molecule 4 is FLAVIN MONONUCLEOTIDE (three-letter code: FMN) (formula: C<sub>17</sub>H<sub>21</sub>N<sub>4</sub>O<sub>9</sub>P).



Mol	Chain	Residues	Atoms					ZeroOcc	AltConf
4	A	1	Total	C	N	O	P	0	0
			31	17	4	9	1		
4	B	1	Total	C	N	O	P	0	0
			31	17	4	9	1		

- Molecule 5 is COBALT HEXAMMINE(III) (three-letter code: NCO) (formula: CoH<sub>18</sub>N<sub>6</sub>).



Mol	Chain	Residues	Atoms			ZeroOcc	AltConf
5	A	1	Total	Co	N	0	0
			7	1	6		

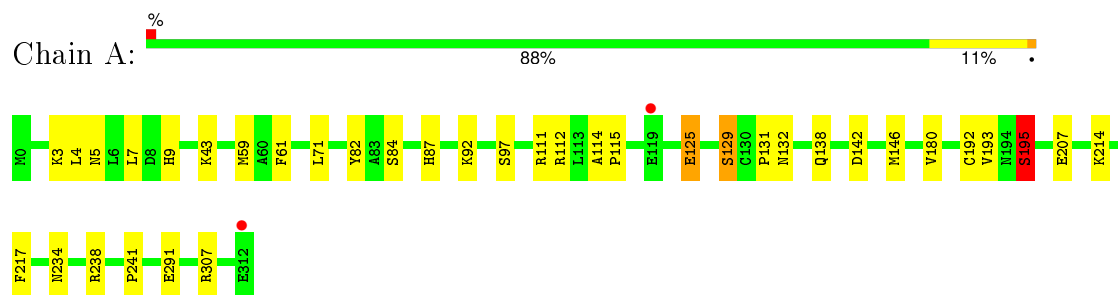
- Molecule 6 is water.

Mol	Chain	Residues	Atoms		ZeroOcc	AltConf
6	A	274	Total	O	0	1
			275	275		
6	B	256	Total	O	0	0
			256	256		

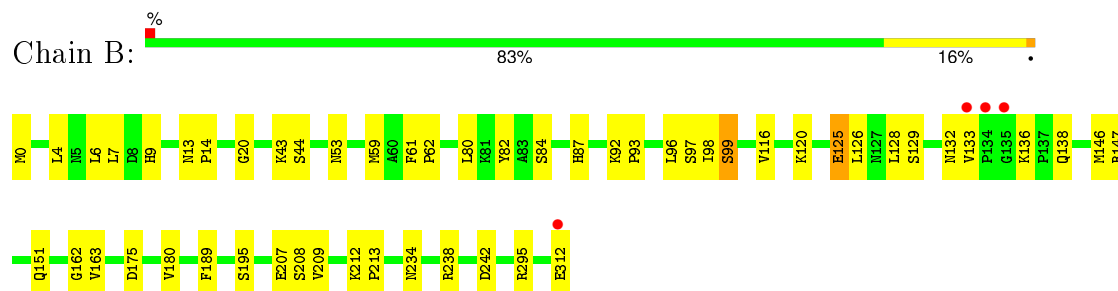
### 3 Residue-property plots [i](#)

These plots are drawn for all protein, RNA and DNA chains in the entry. The first graphic for a chain summarises the proportions of errors displayed in the second graphic. The second graphic shows the sequence view annotated by issues in geometry and electron density. Residues are color-coded according to the number of geometric quality criteria for which they contain at least one outlier: green = 0, yellow = 1, orange = 2 and red = 3 or more. A red dot above a residue indicates a poor fit to the electron density ( $\text{RSRZ} > 2$ ). Stretches of 2 or more consecutive residues without any outlier are shown as a green connector. Residues present in the sample, but not in the model, are shown in grey.

- Molecule 1: Dihydroorotate dehydrogenase (fumarate)



- Molecule 1: Dihydroorotate dehydrogenase (fumarate)





## 4 Data and refinement statistics

Property	Value	Source
Space group	P 21 21 21	Depositor
Cell constants a, b, c, $\alpha$ , $\beta$ , $\gamma$	68.13Å 71.78Å 128.73Å 90.00° 90.00° 90.00°	Depositor
Resolution (Å)	31.76 – 1.88 31.35 – 1.88	Depositor EDS
% Data completeness (in resolution range)	98.1 (31.76-1.88) 98.1 (31.35-1.88)	Depositor EDS
$R_{merge}$	0.11	Depositor
$R_{sym}$	(Not available)	Depositor
$\langle I/\sigma(I) \rangle$ <sup>1</sup>	9.46 (at 1.88Å)	Xtriage
Refinement program	REFMAC 5.7.0029	Depositor
R, $R_{free}$	0.143 , 0.189 0.157 , 0.200	Depositor DCC
$R_{free}$ test set	2610 reflections (5.37%)	DCC
Wilson B-factor (Å <sup>2</sup> )	12.5	Xtriage
Anisotropy	0.125	Xtriage
Bulk solvent $k_{sol}$ (e/Å <sup>3</sup> ), $B_{sol}$ (Å <sup>2</sup> )	0.39 , 50.5	EDS
Estimated twinning fraction	0.010 for k,h,-l	Xtriage
L-test for twinning <sup>2</sup>	$\langle  L  \rangle = 0.50$ , $\langle L^2 \rangle = 0.33$	Xtriage
Outliers	0 of 51326 reflections	Xtriage
$F_o, F_c$ correlation	0.96	EDS
Total number of atoms	5572	wwPDB-VP
Average B, all atoms (Å <sup>2</sup> )	16.0	wwPDB-VP

Xtriage's analysis on translational NCS is as follows: *The analyses of the Patterson function reveals a significant off-origin peak that is 27.90 % of the origin peak, indicating pseudo translational symmetry. The chance of finding a peak of this or larger height randomly in a structure without pseudo translational symmetry is equal to 2.0244e-03. The detected translational NCS is most likely also responsible for the elevated intensity ratio.*

<sup>1</sup>Intensities estimated from amplitudes.

<sup>2</sup>Theoretical values of  $\langle |L| \rangle$ ,  $\langle L^2 \rangle$  for acentric reflections are 0.5, 0.375 respectively for untwinned datasets, and 0.333, 0.2 for perfectly twinned datasets.

## 5 Model quality ⓘ

### 5.1 Standard geometry ⓘ

Bond lengths and bond angles in the following residue types are not validated in this section: FMN, GOL, W7L, NCO

The Z score for a bond length (or angle) is the number of standard deviations the observed value is removed from the expected value. A bond length (or angle) with  $|Z| > 5$  is considered an outlier worth inspection. RMSZ is the root-mean-square of all Z scores of the bond lengths (or angles).

Mol	Chain	Bond lengths		Bond angles	
		RMSZ	# Z  >5	RMSZ	# Z  >5
1	A	1.17	6/2466 (0.2%)	1.00	6/3339 (0.2%)
1	B	1.13	5/2440 (0.2%)	0.99	4/3305 (0.1%)
All	All	1.15	11/4906 (0.2%)	1.00	10/6644 (0.2%)

All (11) bond length outliers are listed below:

Mol	Chain	Res	Type	Atoms	Z	Observed(Å)	Ideal(Å)
1	A	84	SER	CB-OG	-7.76	1.32	1.42
1	B	207	GLU	CD-OE1	-6.51	1.18	1.25
1	A	207	GLU	CD-OE2	-6.10	1.19	1.25
1	A	125	GLU	CG-CD	5.78	1.60	1.51
1	A	195	SER	CB-OG	-5.72	1.34	1.42
1	B	195	SER	CB-OG	-5.46	1.35	1.42
1	A	131	PRO	N-CD	5.37	1.55	1.47
1	B	126	LEU	C-O	-5.23	1.13	1.23
1	A	207	GLU	CD-OE1	-5.19	1.20	1.25
1	B	125	GLU	CG-CD	5.13	1.59	1.51
1	B	208	SER	CB-OG	5.05	1.48	1.42

All (10) bond angle outliers are listed below:

Mol	Chain	Res	Type	Atoms	Z	Observed(°)	Ideal(°)
1	A	3	LYS	CD-CE-NZ	7.67	129.35	111.70
1	A	112	ARG	NE-CZ-NH2	-6.24	117.18	120.30
1	A	307	ARG	CG-CD-NE	-5.58	100.08	111.80
1	B	295	ARG	NE-CZ-NH1	5.53	123.07	120.30
1	A	142	ASP	CB-CG-OD2	-5.38	113.46	118.30
1	B	175	ASP	CB-CG-OD1	5.34	123.11	118.30
1	B	295	ARG	NE-CZ-NH2	-5.17	117.71	120.30
1	A	112	ARG	NE-CZ-NH1	5.09	122.84	120.30

*Continued on next page...*

*Continued from previous page...*

Mol	Chain	Res	Type	Atoms	Z	Observed(°)	Ideal(°)
1	B	4	LEU	CA-CB-CG	5.06	126.94	115.30
1	A	43	LYS	CD-CE-NZ	5.00	123.21	111.70

There are no chirality outliers.

There are no planarity outliers.

## 5.2 Too-close contacts ⓘ

In the following table, the Non-H and H(model) columns list the number of non-hydrogen atoms and hydrogen atoms in the chain respectively. The H(added) column lists the number of hydrogen atoms added and optimized by MolProbity. The Clashes column lists the number of clashes within the asymmetric unit, whereas Symm-Clashes lists symmetry related clashes.

Mol	Chain	Non-H	H(model)	H(added)	Clashes	Symm-Clashes
1	A	2414	0	2412	22	0
1	B	2388	0	2391	34	0
2	A	25	0	15	0	0
2	B	25	0	15	0	0
3	A	60	0	80	6	0
3	B	60	0	80	9	0
4	A	31	0	19	0	0
4	B	31	0	19	0	0
5	A	7	0	0	0	0
6	A	275	0	0	7	0
6	B	256	0	0	7	0
All	All	5572	0	5031	60	0

The all-atom clashscore is defined as the number of clashes found per 1000 atoms (including hydrogen atoms). The all-atom clashscore for this structure is 6.

All (60) close contacts within the same asymmetric unit are listed below, sorted by their clash magnitude.

Atom-1	Atom-2	Interatomic distance (Å)	Clash overlap (Å)
1:B:9:HIS:CE1	3:B:405:GOL:H11	2.09	0.87
1:B:59:MET:HE3	6:B:607:HOH:O	1.82	0.78
1:A:59:MET:HE3	6:A:612:HOH:O	1.82	0.78
1:B:234:ASN:HD21	1:B:238:ARG:HE	1.31	0.78
1:A:129:SER:HA	1:A:138:GLN:OE1	1.87	0.75
1:A:61:PHE:CE1	3:A:410:GOL:H11	2.23	0.74
1:B:9:HIS:ND1	3:B:405:GOL:H11	2.04	0.72

*Continued on next page...*

*Continued from previous page...*

Atom-1	Atom-2	Interatomic distance (Å)	Clash overlap (Å)
1:A:234:ASN:HD21	1:A:238:ARG:HE	1.37	0.71
1:A:7:LEU:O	1:A:9:HIS:HD2	1.78	0.67
1:B:128:LEU:HD12	1:B:163:VAL:HG11	1.79	0.64
1:B:44:SER:HB3	1:B:99:SER:HB2	1.82	0.62
1:B:133:VAL:HG22	1:B:136:LYS:HE3	1.81	0.62
1:A:61:PHE:CE1	3:A:410:GOL:C1	2.83	0.61
1:A:146:MET:HE1	1:A:180:VAL:HB	1.84	0.60
1:A:82:TYR:OH	1:A:87:HIS:HD2	1.87	0.56
1:B:82:TYR:OH	1:B:87:HIS:HD2	1.88	0.56
1:A:5:ASN:O	3:A:406:GOL:H31	2.07	0.55
1:B:20:GLY:HA2	1:B:43:LYS:HD2	1.89	0.54
1:B:128:LEU:CD1	1:B:163:VAL:HG11	2.39	0.52
1:A:241:PRO:HA	3:A:405:GOL:H31	1.91	0.52
1:B:146:MET:HE1	1:B:180:VAL:HB	1.90	0.51
1:A:111:ARG:NH1	6:A:545:HOH:O	2.45	0.49
1:B:120:LYS:NZ	6:B:644:HOH:O	2.40	0.49
1:B:234:ASN:ND2	1:B:238:ARG:HE	2.03	0.49
3:B:411:GOL:H31	6:B:599:HOH:O	2.11	0.49
1:A:87:HIS:HE1	1:A:92:LYS:O	1.95	0.49
1:B:87:HIS:HE1	1:B:92:LYS:O	1.95	0.49
1:A:291:GLU:CD	6:A:734:HOH:O	2.51	0.49
1:B:128:LEU:HG	1:B:163:VAL:HG13	1.95	0.48
1:B:61:PHE:HB3	1:B:62:PRO:HD2	1.95	0.48
1:A:132:ASN:ND2	6:A:749:HOH:O	2.47	0.48
1:A:61:PHE:CD1	3:A:410:GOL:H11	2.49	0.47
1:B:13:ASN:HB2	1:B:14:PRO:HD2	1.97	0.47
1:B:128:LEU:HD12	1:B:163:VAL:CG1	2.45	0.47
1:B:96:LEU:CD2	1:B:98:ILE:HD11	2.45	0.47
1:B:129:SER:HA	1:B:138:GLN:NE2	2.30	0.46
1:B:7:LEU:O	1:B:9:HIS:HD2	1.98	0.46
1:B:147:ARG:O	1:B:151:GLN:HG3	2.16	0.46
3:B:405:GOL:H12	6:B:510:HOH:O	2.15	0.46
1:A:217:PHE:CE1	3:A:404:GOL:H12	2.52	0.45
1:A:97:SER:HA	1:A:125:GLU:O	2.17	0.45
1:B:61:PHE:HB3	1:B:62:PRO:CD	2.47	0.45
1:B:209:VAL:O	3:B:407:GOL:H31	2.16	0.45
3:B:411:GOL:C1	6:B:669:HOH:O	2.65	0.45
1:A:195:SER:HB3	6:A:731:HOH:O	2.16	0.44
1:B:212:LYS:HB3	1:B:213:PRO:HD3	2.00	0.44
1:B:93:PRO:HA	3:B:405:GOL:H31	2.00	0.43
1:A:59:MET:CE	6:A:612:HOH:O	2.53	0.43

*Continued on next page...*

Continued from previous page...

Atom-1	Atom-2	Interatomic distance (Å)	Clash overlap (Å)
1:A:114:ALA:N	1:A:115:PRO:HD2	2.33	0.43
1:B:128:LEU:CD1	1:B:163:VAL:CG1	2.97	0.43
1:B:133:VAL:CG2	1:B:136:LYS:HE3	2.48	0.43
1:B:242:ASP:O	6:B:621:HOH:O	2.21	0.42
1:B:162:GLY:HA3	1:B:189:PHE:CZ	2.54	0.42
3:B:405:GOL:C1	6:B:510:HOH:O	2.66	0.42
1:A:214:LYS:HD2	6:A:728:HOH:O	2.20	0.41
1:B:97:SER:HA	1:B:125:GLU:O	2.21	0.41
1:B:53:ASN:HB3	1:B:213:PRO:HG3	2.03	0.40
1:B:93:PRO:CA	3:B:405:GOL:H31	2.51	0.40
1:B:80:LEU:HD11	1:B:116:VAL:HG21	2.03	0.40
1:A:192:CYS:HA	1:A:193:VAL:HA	1.82	0.40

There are no symmetry-related clashes.

## 5.3 Torsion angles [i](#)

### 5.3.1 Protein backbone [i](#)

In the following table, the Percentiles column shows the percent Ramachandran outliers of the chain as a percentile score with respect to all X-ray entries followed by that with respect to entries of similar resolution.

The Analysed column shows the number of residues for which the backbone conformation was analysed, and the total number of residues.

Mol	Chain	Analysed	Favoured	Allowed	Outliers	Percentiles	
1	A	314/313 (100%)	305 (97%)	9 (3%)	0	100	100
1	B	311/313 (99%)	304 (98%)	7 (2%)	0	100	100
All	All	625/626 (100%)	609 (97%)	16 (3%)	0	100	100

There are no Ramachandran outliers to report.

### 5.3.2 Protein sidechains [i](#)

In the following table, the Percentiles column shows the percent sidechain outliers of the chain as a percentile score with respect to all X-ray entries followed by that with respect to entries of similar resolution.

The Analysed column shows the number of residues for which the sidechain conformation was

analysed, and the total number of residues.

Mol	Chain	Analysed	Rotameric	Outliers	Percentiles	
1	A	261/258 (101%)	257 (98%)	4 (2%)	72	66
1	B	258/258 (100%)	252 (98%)	6 (2%)	58	48
All	All	519/516 (101%)	509 (98%)	10 (2%)	65	56

All (10) residues with a non-rotameric sidechain are listed below:

Mol	Chain	Res	Type
1	A	4	LEU
1	A	71	LEU
1	A	129	SER
1	A	195	SER
1	B	0	MET
1	B	6	LEU
1	B	84	SER
1	B	99	SER
1	B	132	ASN
1	B	312	GLU

Some sidechains can be flipped to improve hydrogen bonding and reduce clashes. All (12) such sidechains are listed below:

Mol	Chain	Res	Type
1	A	9	HIS
1	A	87	HIS
1	A	132	ASN
1	A	215	GLN
1	A	234	ASN
1	B	9	HIS
1	B	87	HIS
1	B	132	ASN
1	B	138	GLN
1	B	215	GLN
1	B	234	ASN
1	B	275	GLN

### 5.3.3 RNA ⓘ

There are no RNA molecules in this entry.

## 5.4 Non-standard residues in protein, DNA, RNA chains ⓘ

There are no non-standard protein/DNA/RNA residues in this entry.

## 5.5 Carbohydrates ⓘ

There are no carbohydrates in this entry.

## 5.6 Ligand geometry ⓘ

25 ligands are modelled in this entry.

In the following table, the Counts columns list the number of bonds (or angles) for which Mogul statistics could be retrieved, the number of bonds (or angles) that are observed in the model and the number of bonds (or angles) that are defined in the chemical component dictionary. The Link column lists molecule types, if any, to which the group is linked. The Z score for a bond length (or angle) is the number of standard deviations the observed value is removed from the expected value. A bond length (or angle) with  $|Z| > 2$  is considered an outlier worth inspection. RMSZ is the root-mean-square of all Z scores of the bond lengths (or angles).

Mol	Type	Chain	Res	Link	Bond lengths			Bond angles		
					Counts	RMSZ	$\# Z  > 2$	Counts	RMSZ	$\# Z  > 2$
2	W7L	A	401	-	22,27,27	2.78	10 (45%)	25,38,38	2.87	5 (20%)
3	GOL	A	402[A]	-	5,5,5	0.45	0	5,5,5	0.73	0
3	GOL	A	402[B]	-	5,5,5	0.25	0	5,5,5	0.62	0
3	GOL	A	403	-	5,5,5	0.54	0	5,5,5	0.58	0
3	GOL	A	404	-	5,5,5	0.58	0	5,5,5	0.81	0
3	GOL	A	405	-	5,5,5	0.27	0	5,5,5	0.65	0
3	GOL	A	406	-	5,5,5	0.38	0	5,5,5	1.13	0
3	GOL	A	407	-	5,5,5	0.15	0	5,5,5	0.48	0
3	GOL	A	408	-	5,5,5	0.42	0	5,5,5	0.60	0
3	GOL	A	409	-	5,5,5	0.28	0	5,5,5	0.69	0
3	GOL	A	410	-	5,5,5	0.38	0	5,5,5	0.76	0
4	FMN	A	411	-	32,33,33	1.59	5 (15%)	34,50,50	2.54	8 (23%)
5	NCO	A	412	-	6,6,6	1.94	3 (50%)	0,15,15	0.00	-
2	W7L	B	401	-	22,27,27	2.48	6 (27%)	25,38,38	3.38	8 (32%)
3	GOL	B	402	-	5,5,5	0.73	0	5,5,5	0.46	0
3	GOL	B	403	-	5,5,5	0.59	0	5,5,5	0.65	0
3	GOL	B	404	-	5,5,5	0.59	0	5,5,5	0.70	0
3	GOL	B	405	-	5,5,5	0.53	0	5,5,5	1.90	2 (40%)
3	GOL	B	406	-	5,5,5	0.35	0	5,5,5	0.50	0
3	GOL	B	407	-	5,5,5	0.53	0	5,5,5	1.03	0
3	GOL	B	408	-	5,5,5	1.06	0	5,5,5	1.18	1 (20%)

Mol	Type	Chain	Res	Link	Bond lengths			Bond angles		
					Counts	RMSZ	# Z  > 2	Counts	RMSZ	# Z  > 2
3	GOL	B	409	-	5,5,5	0.20	0	5,5,5	0.53	0
3	GOL	B	410	-	5,5,5	0.84	0	5,5,5	0.79	0
3	GOL	B	411	-	5,5,5	0.49	0	5,5,5	0.58	0
4	FMN	B	412	-	32,33,33	1.59	7 (21%)	34,50,50	2.59	10 (29%)

In the following table, the Chirals column lists the number of chiral outliers, the number of chiral centers analysed, the number of these observed in the model and the number defined in the chemical component dictionary. Similar counts are reported in the Torsion and Rings columns. '-' means no outliers of that kind were identified.

Mol	Type	Chain	Res	Link	Chirals	Torsions	Rings
2	W7L	A	401	-	-	0/7/11/11	0/3/3/3
3	GOL	A	402[A]	-	-	0/4/4/4	0/0/0/0
3	GOL	A	402[B]	-	-	0/4/4/4	0/0/0/0
3	GOL	A	403	-	-	0/4/4/4	0/0/0/0
3	GOL	A	404	-	-	0/4/4/4	0/0/0/0
3	GOL	A	405	-	-	0/4/4/4	0/0/0/0
3	GOL	A	406	-	-	0/4/4/4	0/0/0/0
3	GOL	A	407	-	-	0/4/4/4	0/0/0/0
3	GOL	A	408	-	-	0/4/4/4	0/0/0/0
3	GOL	A	409	-	-	0/4/4/4	0/0/0/0
3	GOL	A	410	-	-	0/4/4/4	0/0/0/0
4	FMN	A	411	-	-	0/18/18/18	0/3/3/3
5	NCO	A	412	-	-	0/0/0/0	0/0/0/0
2	W7L	B	401	-	-	0/7/11/11	0/3/3/3
3	GOL	B	402	-	-	0/4/4/4	0/0/0/0
3	GOL	B	403	-	-	0/4/4/4	0/0/0/0
3	GOL	B	404	-	-	0/4/4/4	0/0/0/0
3	GOL	B	405	-	-	0/4/4/4	0/0/0/0
3	GOL	B	406	-	-	0/4/4/4	0/0/0/0
3	GOL	B	407	-	-	0/4/4/4	0/0/0/0
3	GOL	B	408	-	-	0/4/4/4	0/0/0/0
3	GOL	B	409	-	-	0/4/4/4	0/0/0/0
3	GOL	B	410	-	-	0/4/4/4	0/0/0/0
3	GOL	B	411	-	-	0/4/4/4	0/0/0/0
4	FMN	B	412	-	-	0/18/18/18	0/3/3/3

All (31) bond length outliers are listed below:

Mol	Chain	Res	Type	Atoms	Z	Observed(Å)	Ideal(Å)
2	A	401	W7L	CAM-CAU	-7.27	1.42	1.52
4	A	411	FMN	C1'-N10	-4.79	1.43	1.48

*Continued on next page...*



*Continued from previous page...*

Mol	Chain	Res	Type	Atoms	Z	Observed(Å)	Ideal(Å)
2	A	401	W7L	CAL-CAS	-4.39	1.41	1.51
2	B	401	W7L	CAM-CAU	-3.34	1.47	1.52
4	B	412	FMN	C1'-N10	-3.33	1.44	1.48
2	A	401	W7L	CAT-CAU	-2.72	1.36	1.41
2	B	401	W7L	CAT-CAU	-2.72	1.36	1.41
4	B	412	FMN	P-O3P	-2.62	1.45	1.54
4	A	411	FMN	C10-N10	-2.51	1.36	1.39
4	A	411	FMN	P-O2P	-2.18	1.47	1.54
4	B	412	FMN	P-O2P	-2.16	1.47	1.54
2	B	401	W7L	CAJ-CAY	-2.14	1.37	1.42
4	B	412	FMN	C8-C7	2.06	1.46	1.41
2	A	401	W7L	CAF-CAI	2.09	1.41	1.36
2	A	401	W7L	CAT-NAN	2.16	1.38	1.34
5	A	412	NCO	CO-N2	2.16	2.04	1.96
4	B	412	FMN	C4A-N5	2.17	1.36	1.33
5	A	412	NCO	CO-N6	2.33	2.05	1.96
2	A	401	W7L	CAV-NAN	2.34	1.43	1.38
2	A	401	W7L	CAK-CAR	2.39	1.41	1.37
4	B	412	FMN	O3'-C3'	2.45	1.48	1.43
2	A	401	W7L	CAJ-CAH	2.71	1.42	1.36
4	A	411	FMN	C4A-C10	2.87	1.46	1.40
4	A	411	FMN	C5'-C4'	2.91	1.56	1.51
5	A	412	NCO	CO-N4	3.11	2.08	1.96
4	B	412	FMN	C4-C4A	3.87	1.49	1.41
2	A	401	W7L	CAG-CAS	4.07	1.44	1.37
2	B	401	W7L	CAJ-CAH	4.51	1.46	1.36
2	B	401	W7L	CAW-NAO	5.53	1.43	1.33
2	A	401	W7L	CAW-NAO	5.87	1.43	1.33
2	B	401	W7L	CAT-NAN	7.02	1.45	1.34

All (34) bond angle outliers are listed below:

Mol	Chain	Res	Type	Atoms	Z	Observed(°)	Ideal(°)
2	B	401	W7L	NAO-CAV-NAN	-7.62	114.85	127.69
2	A	401	W7L	NAO-CAV-NAN	-6.99	115.91	127.69
4	B	412	FMN	C4A-C4-N3	-5.79	115.96	123.52
4	A	411	FMN	C4A-C4-N3	-4.83	117.21	123.52
2	B	401	W7L	CAL-CAM-CAU	-4.62	104.37	112.47
4	A	411	FMN	C4A-C10-N10	-4.54	117.22	120.52
4	A	411	FMN	C4-C4A-C10	-4.09	117.32	119.94
2	B	401	W7L	CAM-CAL-CAS	-3.55	106.29	112.23
2	B	401	W7L	CAI-CAF-CAG	-3.52	115.25	120.98

*Continued on next page...*

*Continued from previous page...*

Mol	Chain	Res	Type	Atoms	Z	Observed(°)	Ideal(°)
4	A	411	FMN	N3-C2-N1	-3.33	122.08	127.69
4	B	412	FMN	C4A-C10-N10	-3.20	118.19	120.52
4	B	412	FMN	C4-C4A-C10	-3.08	117.97	119.94
3	B	405	GOL	C3-C2-C1	-2.72	99.60	111.06
4	B	412	FMN	N3-C2-N1	-2.68	123.19	127.69
2	B	401	W7L	CAI-CAX-CAK	-2.37	117.95	122.05
2	A	401	W7L	CAG-CAS-CAY	-2.15	116.16	119.10
4	B	412	FMN	C9A-C5A-N5	-2.03	118.87	122.18
3	B	408	GOL	O2-C2-C3	2.10	118.53	108.47
3	B	405	GOL	O3-C3-C2	2.33	121.79	109.97
4	A	411	FMN	C4A-N5-C5A	2.39	119.54	116.72
4	B	412	FMN	C4A-N5-C5A	2.41	119.56	116.72
2	A	401	W7L	CAI-CAX-CAY	2.58	122.55	119.12
4	A	411	FMN	C6-C5A-N5	2.60	122.15	118.92
4	B	412	FMN	C6-C5A-N5	2.65	122.22	118.92
2	B	401	W7L	CAL-CAS-CAY	2.78	127.28	120.86
4	B	412	FMN	C5A-C9A-N10	2.90	119.75	117.58
4	A	411	FMN	O2P-P-O1P	3.45	121.88	110.63
4	B	412	FMN	C1'-N10-C9A	4.11	123.60	118.83
2	B	401	W7L	CAV-NAN-CAT	6.34	122.03	115.68
2	A	401	W7L	CAV-NAN-CAT	6.35	122.04	115.68
2	A	401	W7L	CAW-NAO-CAV	9.30	122.91	115.16
4	A	411	FMN	C4-N3-C2	10.36	123.80	115.16
2	B	401	W7L	CAW-NAO-CAV	10.40	123.83	115.16
4	B	412	FMN	C4-N3-C2	10.48	123.90	115.16

There are no chirality outliers.

There are no torsion outliers.

There are no ring outliers.

7 monomers are involved in 15 short contacts:

Mol	Chain	Res	Type	Clashes	Symm-Clashes
3	A	404	GOL	1	0
3	A	405	GOL	1	0
3	A	406	GOL	1	0
3	A	410	GOL	3	0
3	B	405	GOL	6	0
3	B	407	GOL	1	0
3	B	411	GOL	2	0

## 5.7 Other polymers

There are no such residues in this entry.

## 5.8 Polymer linkage issues

There are no chain breaks in this entry.

## 6 Fit of model and data [i](#)

### 6.1 Protein, DNA and RNA chains [i](#)

In the following table, the column labelled ‘#RSRZ> 2’ contains the number (and percentage) of RSRZ outliers, followed by percent RSRZ outliers for the chain as percentile scores relative to all X-ray entries and entries of similar resolution. The OWAB column contains the minimum, median, 95<sup>th</sup> percentile and maximum values of the occupancy-weighted average B-factor per residue. The column labelled ‘Q< 0.9’ lists the number of (and percentage) of residues with an average occupancy less than 0.9.

Mol	Chain	Analysed	<RSRZ>	#RSRZ>2		OWAB(Å <sup>2</sup> )	Q<0.9
1	A	313/313 (100%)	-0.30	2 (0%)	90 91	7, 12, 24, 50	0
1	B	313/313 (100%)	-0.22	4 (1%)	79 81	6, 13, 29, 50	0
All	All	626/626 (100%)	-0.26	6 (0%)	84 85	6, 12, 27, 50	0

All (6) RSRZ outliers are listed below:

Mol	Chain	Res	Type	RSRZ
1	B	312	GLU	3.3
1	A	312	GLU	3.1
1	B	133	VAL	3.0
1	B	135	GLY	2.9
1	A	119	GLU	2.6
1	B	134	PRO	2.2

### 6.2 Non-standard residues in protein, DNA, RNA chains [i](#)

There are no non-standard protein/DNA/RNA residues in this entry.

### 6.3 Carbohydrates [i](#)

There are no carbohydrates in this entry.

### 6.4 Ligands [i](#)

In the following table, the Atoms column lists the number of modelled atoms in the group and the number defined in the chemical component dictionary. LLDF column lists the quality of electron density of the group with respect to its neighbouring residues in protein, DNA or RNA chains. The B-factors column lists the minimum, median, 95<sup>th</sup> percentile and maximum values of B factors

of atoms in the group. The column labelled 'Q< 0.9' lists the number of atoms with occupancy less than 0.9.

Mol	Type	Chain	Res	Atoms	RSCC	RSR	LLDF	B-factors(Å <sup>2</sup> )	Q<0.9
3	GOL	B	405	6/6	0.81	0.51	16.25	29,37,40,44	0
3	GOL	B	403	6/6	0.77	0.19	15.36	36,45,48,48	0
3	GOL	B	407	6/6	0.81	0.39	14.12	54,55,56,61	0
3	GOL	A	408	6/6	0.79	0.31	9.72	47,49,50,52	0
3	GOL	B	408	6/6	0.80	0.20	7.07	29,36,39,42	0
3	GOL	B	411	6/6	0.85	0.21	6.08	29,36,36,43	0
3	GOL	A	406	6/6	0.93	0.31	5.00	26,36,38,38	0
3	GOL	A	402[B]	6/6	0.94	0.14	4.86	14,17,18,20	6
3	GOL	B	402	6/6	0.86	0.18	4.03	23,33,36,41	0
3	GOL	A	407	6/6	0.76	0.23	3.98	45,49,51,63	0
3	GOL	A	403	6/6	0.97	0.10	3.35	18,19,20,21	0
3	GOL	B	406	6/6	0.90	0.17	3.19	29,39,40,41	0
3	GOL	B	404	6/6	0.78	0.19	2.54	41,53,56,60	0
3	GOL	A	410	6/6	0.90	0.17	2.51	35,37,40,40	0
3	GOL	A	402[A]	6/6	0.94	0.14	2.08	12,14,14,15	6
3	GOL	A	404	6/6	0.94	0.10	1.13	20,22,24,26	0
5	NCO	A	412	7/7	0.99	0.10	0.78	12,13,14,14	0
2	W7L	A	401	25/25	0.94	0.11	0.39	9,11,17,18	0
2	W7L	B	401	25/25	0.94	0.11	0.25	9,13,22,32	0
4	FMN	A	411	31/31	0.98	0.10	-0.02	6,7,11,15	0
4	FMN	B	412	31/31	0.98	0.09	-0.12	7,8,10,10	0
3	GOL	B	410	6/6	0.86	0.19	-	38,43,46,51	0
3	GOL	A	405	6/6	0.82	0.20	-	44,48,52,56	0
3	GOL	B	409	6/6	0.84	0.17	-	35,44,49,50	0
3	GOL	A	409	6/6	0.87	0.15	-	38,39,40,42	0

## 6.5 Other polymers [i](#)

There are no such residues in this entry.