



# Full wwPDB X-ray Structure Validation Report ⓘ

Feb 1, 2016 – 06:11 AM GMT

PDB ID : 2W90  
Title : Geobacillus stearothermophilus 6-phosphogluconate with bound 6- phosphogluconate  
Authors : Cameron, S.; Martini, V.P.; Iulek, J.; Hunter, W.N.  
Deposited on : 2009-01-20  
Resolution : 2.20 Å(reported)

This is a Full wwPDB X-ray Structure Validation Report for a publicly released PDB entry.  
We welcome your comments at [validation@mail.wwpdb.org](mailto:validation@mail.wwpdb.org)  
A user guide is available at  
<http://wwpdb.org/validation/2016/XrayValidationReportHelp>  
with specific help available everywhere you see the ⓘ symbol.

---

The following versions of software and data (see [references ⓘ](#)) were used in the production of this report:

MolProbity : 4.02b-467  
Mogul : 1.7 (RC4), CSD as536be (2015)  
Xtriage (Phenix) : 1.9-1692  
EDS : rb-20026688  
Percentile statistics : 20151230.v01 (using entries in the PDB archive December 30th 2015)  
Refmac : 5.8.0135  
CCP4 : 6.5.0  
Ideal geometry (proteins) : Engh & Huber (2001)  
Ideal geometry (DNA, RNA) : Parkinson et al. (1996)  
Validation Pipeline (wwPDB-VP) : trunk26865

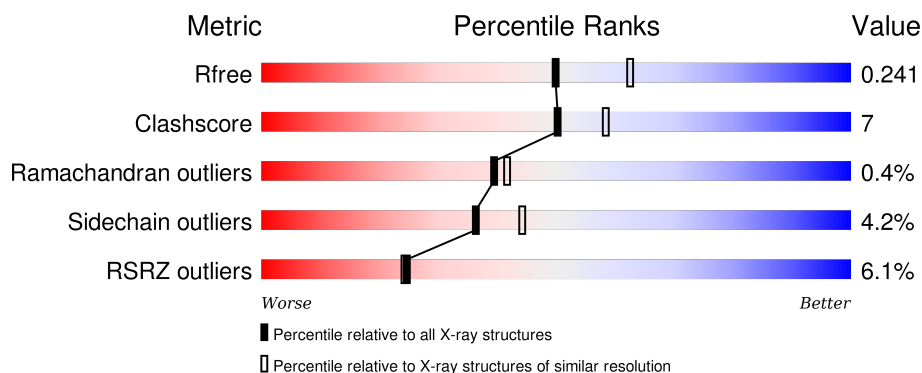
# 1 Overall quality at a glance ⓘ

The following experimental techniques were used to determine the structure:

## *X-RAY DIFFRACTION*

The reported resolution of this entry is 2.20 Å.

Percentile scores (ranging between 0-100) for global validation metrics of the entry are shown in the following graphic. The table shows the number of entries on which the scores are based.



Metric	Whole archive (#Entries)	Similar resolution (#Entries, resolution range(Å))
$R_{free}$	91344	3774 (2.20-2.20)
Clashscore	102246	4477 (2.20-2.20)
Ramachandran outliers	100387	4404 (2.20-2.20)
Sidechain outliers	100360	4405 (2.20-2.20)
RSRZ outliers	91569	3781 (2.20-2.20)

The table below summarises the geometric issues observed across the polymeric chains and their fit to the electron density. The red, orange, yellow and green segments on the lower bar indicate the fraction of residues that contain outliers for  $\geq 3$ , 2, 1 and 0 types of geometric quality criteria. A grey segment represents the fraction of residues that are not modelled. The numeric value for each fraction is indicated below the corresponding segment, with a dot representing fractions  $\leq 5\%$ . The upper red bar (where present) indicates the fraction of residues that have poor fit to the electron density. The numeric value is given above the bar.

Mol	Chain	Length	Quality of chain
1	A	471	<div> <div>8%</div> <div>85%</div> <div>13%</div> </div>
1	B	471	<div> <div>4%</div> <div>85%</div> <div>14%</div> </div>

The following table lists non-polymeric compounds, carbohydrate monomers and non-standard residues in protein, DNA, RNA chains that are outliers for geometric or electron-density-fit criteria:

Mol	Type	Chain	Res	Chirality	Geometry	Clashes	Electron density
3	TRS	A	501	-	-	-	X
3	TRS	A	502	-	-	-	X
4	SO4	B	500	-	-	-	X
4	SO4	B	501	-	-	-	X

## 2 Entry composition [i](#)

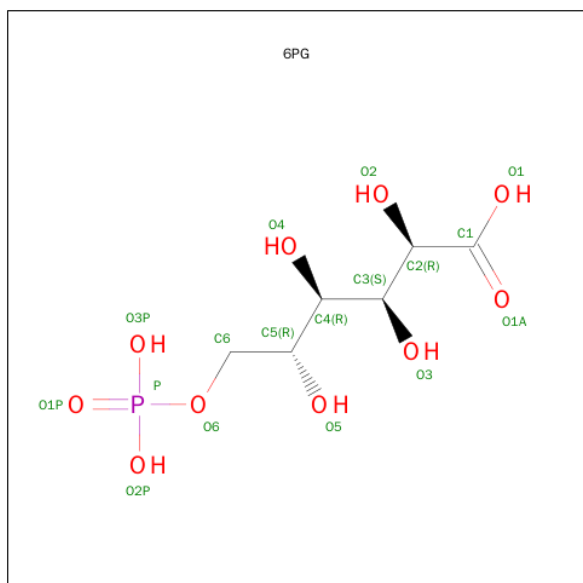
There are 5 unique types of molecules in this entry. The entry contains 8458 atoms, of which 0 are hydrogens and 0 are deuteriums.

In the tables below, the ZeroOcc column contains the number of atoms modelled with zero occupancy, the AltConf column contains the number of residues with at least one atom in alternate conformation and the Trace column contains the number of residues modelled with at most 2 atoms.

- Molecule 1 is a protein called 6-PHOSPHOGLUCONATE DEHYDROGENASE, DECARBOXYLATING.

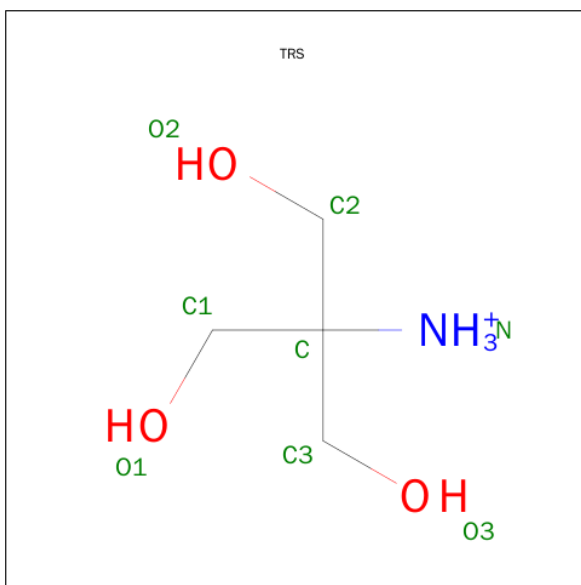
Mol	Chain	Residues	Atoms					ZeroOcc	AltConf	Trace
1	A	470	Total	C	N	O	S	0	34	0
			3862	2490	643	712	17			
1	B	471	Total	C	N	O	S	0	23	0
			3799	2443	640	700	16			

- Molecule 2 is SUGAR (6-PHOSPHOGLUCONIC ACID) (three-letter code: 6PG) (formula:  $C_6H_{13}O_{10}P$ ).



Mol	Chain	Residues	Atoms				ZeroOcc	AltConf
2	A	1	Total	C	O	P	0	0
			17	6	10	1		

- Molecule 3 is 2-AMINO-2-HYDROXYMETHYL-PROPANE-1,3-DIOL (three-letter code: TRS) (formula:  $C_4H_{12}NO_3$ ).



Mol	Chain	Residues	Atoms				ZeroOcc	AltConf
3	A	1	Total	C	N	O	0	0
			8	4	1	3		
3	A	1	Total	C	N	O	0	0
			8	4	1	3		

- Molecule 4 is SULFATE ION (three-letter code: SO4) (formula: O<sub>4</sub>S).



Mol	Chain	Residues	Atoms			ZeroOcc	AltConf
4	B	1	Total	O	S	0	0
			5	4	1		
4	B	1	Total	O	S	0	0
			5	4	1		

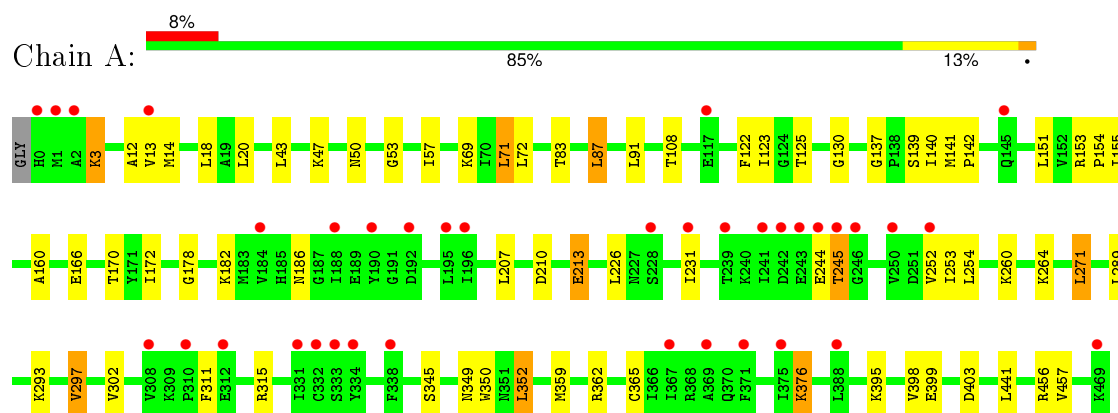
- Molecule 5 is water.

Mol	Chain	Residues	Atoms		ZeroOcc	AltConf
5	A	379	Total 379	O 379	0	0
5	B	375	Total 375	O 375	0	0

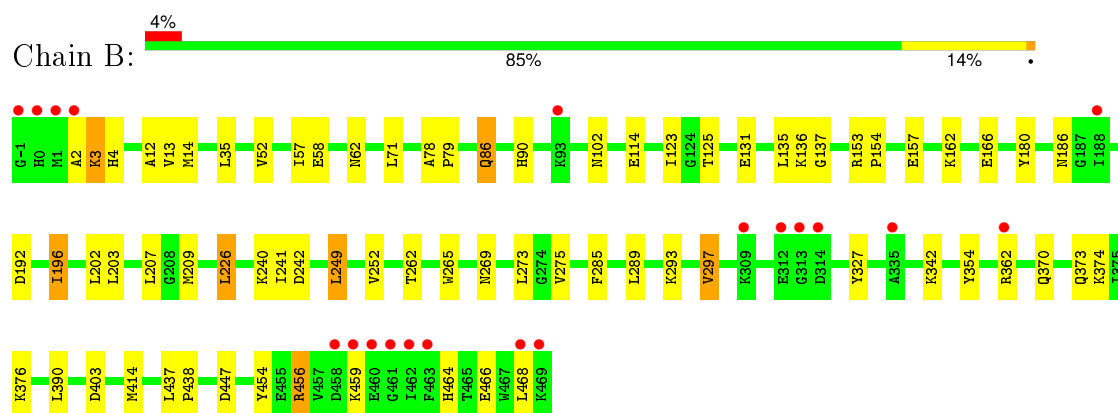
### 3 Residue-property plots [i](#)

These plots are drawn for all protein, RNA and DNA chains in the entry. The first graphic for a chain summarises the proportions of errors displayed in the second graphic. The second graphic shows the sequence view annotated by issues in geometry and electron density. Residues are color-coded according to the number of geometric quality criteria for which they contain at least one outlier: green = 0, yellow = 1, orange = 2 and red = 3 or more. A red dot above a residue indicates a poor fit to the electron density ( $\text{RSRZ} > 2$ ). Stretches of 2 or more consecutive residues without any outlier are shown as a green connector. Residues present in the sample, but not in the model, are shown in grey.

- Molecule 1: 6-PHOSPHOGLUCONATE DEHYDROGENASE, DECARBOXYLATING



- Molecule 1: 6-PHOSPHOGLUCONATE DEHYDROGENASE, DECARBOXYLATING



## 4 Data and refinement statistics

Property	Value	Source
Space group	P 21 21 21	Depositor
Cell constants a, b, c, $\alpha$ , $\beta$ , $\gamma$	66.95Å 119.50Å 142.24Å 90.00° 90.00° 90.00°	Depositor
Resolution (Å)	71.07 – 2.20 44.58 – 2.20	Depositor EDS
% Data completeness (in resolution range)	99.3 (71.07-2.20) 99.3 (44.58-2.20)	Depositor EDS
$R_{merge}$	0.12	Depositor
$R_{sym}$	(Not available)	Depositor
$\langle I/\sigma(I) \rangle$ <sup>1</sup>	3.21 (at 2.20Å)	Xtriage
Refinement program	REFMAC 5.2.0019	Depositor
R, $R_{free}$	0.171 , 0.234 0.183 , 0.241	Depositor DCC
$R_{free}$ test set	2947 reflections (5.33%)	DCC
Wilson B-factor (Å <sup>2</sup> )	32.1	Xtriage
Anisotropy	0.018	Xtriage
Bulk solvent $k_{sol}$ (e/Å <sup>3</sup> ), $B_{sol}$ (Å <sup>2</sup> )	0.35 , 49.5	EDS
Estimated twinning fraction	No twinning to report.	Xtriage
L-test for twinning <sup>2</sup>	$\langle  L  \rangle = 0.43$ , $\langle L^2 \rangle = 0.25$	Xtriage
Outliers	0 of 58286 reflections	Xtriage
$F_o, F_c$ correlation	0.94	EDS
Total number of atoms	8458	wwPDB-VP
Average B, all atoms (Å <sup>2</sup> )	41.0	wwPDB-VP

Xtriage's analysis on translational NCS is as follows: *The largest off-origin peak in the Patterson function is 5.38% of the height of the origin peak. No significant pseudotranslation is detected.*

<sup>1</sup>Intensities estimated from amplitudes.

<sup>2</sup>Theoretical values of  $\langle |L| \rangle$ ,  $\langle L^2 \rangle$  for acentric reflections are 0.5, 0.375 respectively for untwinned datasets, and 0.333, 0.2 for perfectly twinned datasets.



## 5 Model quality

### 5.1 Standard geometry

Bond lengths and bond angles in the following residue types are not validated in this section: TRS, 6PG, SO4

The Z score for a bond length (or angle) is the number of standard deviations the observed value is removed from the expected value. A bond length (or angle) with  $|Z| > 5$  is considered an outlier worth inspection. RMSZ is the root-mean-square of all Z scores of the bond lengths (or angles).

Mol	Chain	Bond lengths		Bond angles	
		RMSZ	$\# Z  > 5$	RMSZ	$\# Z  > 5$
1	A	0.73	8/4042 (0.2%)	0.68	2/5455 (0.0%)
1	B	0.54	0/3943	0.65	0/5322
All	All	0.64	8/7985 (0.1%)	0.67	2/10777 (0.0%)

Chiral center outliers are detected by calculating the chiral volume of a chiral center and verifying if the center is modelled as a planar moiety or with the opposite hand. A planarity outlier is detected by checking planarity of atoms in a peptide group, atoms in a mainchain group or atoms of a sidechain that are expected to be planar.

Mol	Chain	#Chirality outliers	#Planarity outliers
1	A	0	1

All (8) bond length outliers are listed below:

Mol	Chain	Res	Type	Atoms	Z	Observed(Å)	Ideal(Å)
1	A	244	GLU	CD-OE1	14.04	1.41	1.25
1	A	213[A]	GLU	CD-OE2	11.12	1.37	1.25
1	A	213[B]	GLU	CD-OE2	11.12	1.37	1.25
1	A	244	GLU	CD-OE2	10.77	1.37	1.25
1	A	210	ASP	CG-OD1	9.45	1.47	1.25
1	A	213[A]	GLU	CD-OE1	8.08	1.34	1.25
1	A	213[B]	GLU	CD-OE1	8.08	1.34	1.25
1	A	210	ASP	CG-OD2	6.94	1.41	1.25

All (2) bond angle outliers are listed below:

Mol	Chain	Res	Type	Atoms	Z	Observed(°)	Ideal(°)
1	A	210	ASP	CB-CG-OD1	-9.79	109.49	118.30
1	A	245	THR	O-C-N	-5.65	113.59	123.20

There are no chirality outliers.

All (1) planarity outliers are listed below:

Mol	Chain	Res	Type	Group
1	A	245	THR	Mainchain

## 5.2 Too-close contacts ⓘ

In the following table, the Non-H and H(model) columns list the number of non-hydrogen atoms and hydrogen atoms in the chain respectively. The H(added) column lists the number of hydrogen atoms added and optimized by MolProbity. The Clashes column lists the number of clashes within the asymmetric unit, whereas Symm-Clashes lists symmetry related clashes.

Mol	Chain	Non-H	H(model)	H(added)	Clashes	Symm-Clashes
1	A	3862	0	3975	62	0
1	B	3799	0	3885	53	0
2	A	17	0	10	2	0
3	A	16	0	24	1	0
4	B	10	0	0	0	0
5	A	379	0	0	15	0
5	B	375	0	0	12	0
All	All	8458	0	7894	108	0

The all-atom clashscore is defined as the number of clashes found per 1000 atoms (including hydrogen atoms). The all-atom clashscore for this structure is 7.

All (108) close contacts within the same asymmetric unit are listed below, sorted by their clash magnitude.

Atom-1	Atom-2	Interatomic distance (Å)	Clash overlap (Å)
1:B:123:ILE:HG22	1:B:125[B]:THR:HG22	1.50	0.94
1:A:123:ILE:HG22	1:A:125[B]:THR:HG22	1.57	0.84
1:A:441:LEU:HD21	1:B:196[A]:ILE:HD11	1.59	0.83
1:B:297:VAL:HG21	5:B:2110:HOH:O	1.78	0.83
1:A:441:LEU:HD21	1:B:196[A]:ILE:CD1	2.17	0.74
1:A:140:ILE:HD12	1:A:160:ALA:HB2	1.73	0.70
1:B:192:ASP:O	1:B:196[A]:ILE:HG23	1.92	0.70
1:B:157:GLU:O	1:B:162:LYS:NZ	2.24	0.69
1:A:123:ILE:HG22	1:A:125[B]:THR:CG2	2.24	0.67
1:A:18:LEU:CD2	1:A:71:LEU:HD11	2.25	0.67
1:A:18:LEU:HD23	1:A:71:LEU:CD1	2.24	0.67
1:A:186[A]:ASN:ND2	5:A:2175:HOH:O	2.28	0.66
1:A:359[B]:MET:HG2	1:A:362[B]:ARG:NH2	2.09	0.66

*Continued on next page...*

*Continued from previous page...*

Atom-1	Atom-2	Interatomic distance (Å)	Clash overlap (Å)
1:A:18:LEU:HD23	1:A:71:LEU:HD11	1.79	0.64
5:A:2325:HOH:O	1:B:414[B]:MET:HE1	1.97	0.64
1:B:12:ALA:HB3	5:B:2009:HOH:O	1.98	0.63
1:A:87:LEU:HB3	1:A:91[B]:LEU:HD21	1.80	0.62
1:B:123:ILE:HG22	1:B:125[B]:THR:CG2	2.29	0.61
1:B:57:ILE:HD12	1:B:86[A]:GLN:HE21	1.66	0.61
1:A:359[B]:MET:CG	1:A:362[B]:ARG:NH2	2.63	0.61
1:B:293:LYS:O	1:B:297:VAL:HG13	2.02	0.59
1:A:141:MET:HB3	1:A:172[A]:ILE:HD11	1.85	0.59
1:A:345:SER:HB2	1:A:352:LEU:HD22	1.84	0.58
1:A:349:ASN:ND2	5:A:2277:HOH:O	2.15	0.58
1:A:226:LEU:HB3	1:A:231:ILE:HD12	1.86	0.58
1:A:359[B]:MET:HG2	1:A:362[B]:ARG:HH22	1.67	0.57
1:B:262:THR:HG22	1:B:265:TRP:CH2	2.39	0.57
1:B:57:ILE:HD13	1:B:86[A]:GLN:HB3	1.86	0.57
1:A:172[A]:ILE:HD12	1:A:178:GLY:HA2	1.85	0.57
1:A:456:ARG:CZ	1:B:252:VAL:HG11	2.35	0.56
1:B:13:VAL:HG21	5:B:2138:HOH:O	2.05	0.56
1:A:213[B]:GLU:CD	1:A:315[B]:ARG:HH22	2.09	0.56
1:A:398:VAL:HG23	1:A:399[B]:GLU:OE1	2.06	0.56
1:A:87:LEU:HB3	1:A:91[B]:LEU:CD2	2.36	0.55
2:A:500:6PG:O3P	5:A:2371:HOH:O	2.17	0.54
1:B:62[B]:ASN:ND2	5:B:2067:HOH:O	2.34	0.54
1:B:362[A]:ARG:NE	1:B:376:LYS:HZ1	2.06	0.53
1:A:47:LYS:NZ	5:A:2052:HOH:O	2.40	0.53
1:B:456:ARG:HD2	1:B:459[B]:LYS:HB2	1.91	0.53
1:A:14:MET:HE1	5:A:2374:HOH:O	2.09	0.52
1:A:151:LEU:HD23	1:A:151:LEU:N	2.24	0.52
1:B:180:TYR:OH	1:B:269:ASN:OD1	2.10	0.52
1:B:58[A]:GLU:OE1	1:B:90:HIS:CD2	2.63	0.52
1:A:362[B]:ARG:HH22	1:A:376:LYS:HD3	1.75	0.52
1:A:87:LEU:O	1:A:91[B]:LEU:HD22	2.09	0.51
1:A:359[B]:MET:HE1	5:A:2064:HOH:O	2.09	0.51
1:B:57:ILE:HD12	1:B:86[A]:GLN:NE2	2.25	0.51
1:A:182:LYS:HZ2	1:A:186[A]:ASN:HD21	1.57	0.51
1:A:293:LYS:O	1:A:297:VAL:HG12	2.10	0.50
1:A:83:THR:O	1:A:87:LEU:HD22	2.11	0.50
1:A:142:PRO:HD2	1:A:170:THR:O	2.11	0.50
1:B:12:ALA:HB1	5:B:2010:HOH:O	2.11	0.49
1:A:87:LEU:C	1:A:91[B]:LEU:HD22	2.32	0.49
1:A:69:LYS:NZ	5:A:2077:HOH:O	2.45	0.49

*Continued on next page...*

*Continued from previous page...*

Atom-1	Atom-2	Interatomic distance (Å)	Clash overlap (Å)
1:A:182:LYS:NZ	1:A:186[A]:ASN:HD21	2.10	0.49
1:A:311:PHE:HB3	5:A:2256:HOH:O	2.11	0.49
1:A:18:LEU:HD22	5:A:2005:HOH:O	2.12	0.48
1:B:242:ASP:HB2	1:B:249[A]:LEU:HD22	1.95	0.48
1:A:395:LYS:O	1:A:399[B]:GLU:HG2	2.14	0.48
1:A:456:ARG:NH2	1:B:252:VAL:HG11	2.28	0.47
2:A:500:6PG:C1	2:A:500:6PG:O4	2.62	0.47
1:B:289[A]:LEU:HD12	5:B:2103:HOH:O	2.13	0.47
1:A:141:MET:HB3	1:A:172[A]:ILE:CD1	2.44	0.47
1:A:13:VAL:HG23	5:A:2004:HOH:O	2.14	0.47
1:A:139:SER:CB	1:A:365[B]:CYS:SG	3.02	0.47
1:B:390[A]:LEU:HD11	5:B:2359:HOH:O	2.15	0.47
1:A:253:ILE:HD13	1:B:454:TYR:CD2	2.50	0.47
1:B:373:GLN:NE2	5:B:2312:HOH:O	2.47	0.47
1:B:456:ARG:HD2	1:B:459[A]:LYS:HB2	1.97	0.47
1:A:260:LYS:NZ	3:A:502:TRS:O3	2.48	0.46
1:A:359[B]:MET:HE2	5:A:2163:HOH:O	2.14	0.46
1:A:57:ILE:CG1	1:A:87:LEU:HD13	2.45	0.46
1:B:57:ILE:HD13	1:B:86[B]:GLN:HB2	1.96	0.46
1:B:437:LEU:HB3	1:B:438:PRO:HD2	1.97	0.46
1:A:43:LEU:HD11	1:A:53:GLY:HA3	1.97	0.45
1:A:350:TRP:HB3	1:A:352:LEU:HD13	1.98	0.45
1:B:447[A]:ASP:OD1	1:B:464:HIS:ND1	2.48	0.45
1:B:86[B]:GLN:HE21	1:B:86[B]:GLN:HA	1.82	0.45
1:A:12:ALA:HB1	5:A:2004:HOH:O	2.16	0.45
1:A:271[A]:LEU:HD13	1:B:285:PHE:CE1	2.52	0.45
1:A:441:LEU:CD2	1:B:196[A]:ILE:HD11	2.41	0.45
1:A:362[B]:ARG:NH2	1:A:376:LYS:HD3	2.32	0.44
1:A:302:VAL:HG21	1:B:390[B]:LEU:CD1	2.48	0.43
1:B:14:MET:HE2	1:B:131:GLU:HG2	2.01	0.43
1:B:78:ALA:HB3	1:B:79:PRO:HD3	2.00	0.43
1:B:186:ASN:ND2	5:B:2172:HOH:O	2.49	0.43
1:B:252:VAL:O	1:B:252:VAL:CG1	2.66	0.42
1:B:342:LYS:HA	1:B:354:TYR:OH	2.18	0.42
1:B:226:LEU:HD13	1:B:327:TYR:HD1	1.84	0.42
1:B:273:LEU:HB2	1:B:275[B]:VAL:HG12	2.02	0.42
1:A:395:LYS:HD3	5:A:2318:HOH:O	2.20	0.42
1:B:86[B]:GLN:NE2	1:B:86[B]:GLN:HA	2.34	0.41
1:B:102[B]:ASN:ND2	5:B:2108:HOH:O	2.53	0.41
1:A:264:LYS:NZ	5:A:2227:HOH:O	2.53	0.41
1:B:203:LEU:HD22	1:B:209:MET:CE	2.50	0.41

*Continued on next page...*

Continued from previous page...

Atom-1	Atom-2	Interatomic distance (Å)	Clash overlap (Å)
1:B:373:GLN:NE2	1:B:376:LYS:HD2	2.34	0.41
1:A:14:MET:HE3	1:A:130:GLY:O	2.21	0.41
1:B:240:LYS:C	1:B:241:ILE:HD12	2.41	0.41
1:A:155[B]:ILE:H	1:A:155[B]:ILE:HD12	1.85	0.41
1:A:252:VAL:HG11	1:B:456:ARG:NH1	2.36	0.41
1:B:403:ASP:HB2	5:B:2338:HOH:O	2.20	0.41
1:A:153:ARG:N	1:A:154:PRO:HD2	2.35	0.41
1:A:108:THR:HG23	1:A:122:PHE:HE2	1.86	0.41
1:B:153:ARG:HB3	1:B:154:PRO:HD3	2.03	0.41
1:A:457:VAL:HG11	5:B:2218:HOH:O	2.20	0.40
1:B:4:HIS:CE1	1:B:52[A]:VAL:HG21	2.57	0.40
1:B:2:ALA:O	1:B:3:LYS:C	2.60	0.40

There are no symmetry-related clashes.

## 5.3 Torsion angles ⓘ

### 5.3.1 Protein backbone ⓘ

In the following table, the Percentiles column shows the percent Ramachandran outliers of the chain as a percentile score with respect to all X-ray entries followed by that with respect to entries of similar resolution.

The Analysed column shows the number of residues for which the backbone conformation was analysed, and the total number of residues.

Mol	Chain	Analysed	Favoured	Allowed	Outliers	Percentiles	
1	A	503/471 (107%)	486 (97%)	15 (3%)	2 (0%)	39	42
1	B	492/471 (104%)	473 (96%)	17 (4%)	2 (0%)	39	42
All	All	995/942 (106%)	959 (96%)	32 (3%)	4 (0%)	39	42

All (4) Ramachandran outliers are listed below:

Mol	Chain	Res	Type
1	B	3	LYS
1	A	3	LYS
1	A	137	GLY
1	B	137	GLY

### 5.3.2 Protein sidechains ⓘ

In the following table, the Percentiles column shows the percent sidechain outliers of the chain as a percentile score with respect to all X-ray entries followed by that with respect to entries of similar resolution.

The Analysed column shows the number of residues for which the sidechain conformation was analysed, and the total number of residues.

Mol	Chain	Analysed	Rotameric	Outliers	Percentiles	
1	A	412/377 (109%)	395 (96%)	17 (4%)	37	45
1	B	400/377 (106%)	378 (94%)	22 (6%)	27	30
All	All	812/754 (108%)	773 (95%)	39 (5%)	36	37

All (39) residues with a non-rotameric sidechain are listed below:

Mol	Chain	Res	Type
1	A	3	LYS
1	A	20	LEU
1	A	50	ASN
1	A	71	LEU
1	A	72	LEU
1	A	87	LEU
1	A	166[A]	GLU
1	A	166[B]	GLU
1	A	207	LEU
1	A	254	LEU
1	A	271[A]	LEU
1	A	271[B]	LEU
1	A	289[A]	LEU
1	A	289[B]	LEU
1	A	297	VAL
1	A	352	LEU
1	A	376	LYS
1	B	35	LEU
1	B	71	LEU
1	B	86[A]	GLN
1	B	86[B]	GLN
1	B	114	GLU
1	B	135	LEU
1	B	136	LYS
1	B	166[A]	GLU
1	B	166[B]	GLU
1	B	196[A]	ILE

*Continued on next page...*

*Continued from previous page...*

Mol	Chain	Res	Type
1	B	196[B]	ILE
1	B	202	LEU
1	B	207	LEU
1	B	226	LEU
1	B	249[A]	LEU
1	B	249[B]	LEU
1	B	297	VAL
1	B	370	GLN
1	B	374	LYS
1	B	456	ARG
1	B	466	GLU
1	B	468	LEU

Some sidechains can be flipped to improve hydrogen bonding and reduce clashes. All (5) such sidechains are listed below:

Mol	Chain	Res	Type
1	A	50	ASN
1	A	62	ASN
1	A	227	ASN
1	A	259	GLN
1	B	90	HIS

### 5.3.3 RNA [i](#)

There are no RNA molecules in this entry.

## 5.4 Non-standard residues in protein, DNA, RNA chains [i](#)

There are no non-standard protein/DNA/RNA residues in this entry.

### 5.5 Carbohydrates [i](#)

There are no carbohydrates in this entry.

### 5.6 Ligand geometry [i](#)

5 ligands are modelled in this entry.

In the following table, the Counts columns list the number of bonds (or angles) for which Mogul statistics could be retrieved, the number of bonds (or angles) that are observed in the model and the number of bonds (or angles) that are defined in the chemical component dictionary. The Link column lists molecule types, if any, to which the group is linked. The Z score for a bond length (or angle) is the number of standard deviations the observed value is removed from the expected value. A bond length (or angle) with  $|Z| > 2$  is considered an outlier worth inspection. RMSZ is the root-mean-square of all Z scores of the bond lengths (or angles).

Mol	Type	Chain	Res	Link	Bond lengths			Bond angles		
					Counts	RMSZ	$\# Z  > 2$	Counts	RMSZ	$\# Z  > 2$
2	6PG	A	500	-	12,16,16	0.54	0	14,23,23	1.22	0
3	TRS	A	501	-	7,7,7	0.99	1 (14%)	9,9,9	0.97	0
3	TRS	A	502	-	7,7,7	0.89	1 (14%)	9,9,9	0.59	0
4	SO4	B	500	-	4,4,4	0.41	0	6,6,6	0.15	0
4	SO4	B	501	-	4,4,4	0.15	0	6,6,6	0.24	0

In the following table, the Chirals column lists the number of chiral outliers, the number of chiral centers analysed, the number of these observed in the model and the number defined in the chemical component dictionary. Similar counts are reported in the Torsion and Rings columns. '-' means no outliers of that kind were identified.

Mol	Type	Chain	Res	Link	Chirals	Torsions	Rings
2	6PG	A	500	-	-	0/18/22/22	0/0/0/0
3	TRS	A	501	-	-	0/9/9/9	0/0/0/0
3	TRS	A	502	-	-	0/9/9/9	0/0/0/0
4	SO4	B	500	-	-	0/0/0/0	0/0/0/0
4	SO4	B	501	-	-	0/0/0/0	0/0/0/0

All (2) bond length outliers are listed below:

Mol	Chain	Res	Type	Atoms	Z	Observed(Å)	Ideal(Å)
3	A	502	TRS	C-N	-2.20	1.47	1.50
3	A	501	TRS	C-N	-2.04	1.47	1.50

There are no bond angle outliers.

There are no chirality outliers.

There are no torsion outliers.

There are no ring outliers.

2 monomers are involved in 3 short contacts:

Mol	Chain	Res	Type	Clashes	Symm-Clashes
2	A	500	6PG	2	0

*Continued on next page...*



*Continued from previous page...*

Mol	Chain	Res	Type	Clashes	Symm-Clashes
3	A	502	TRS	1	0

## 5.7 Other polymers [i](#)

There are no such residues in this entry.

## 5.8 Polymer linkage issues [i](#)

There are no chain breaks in this entry.

## 6 Fit of model and data

### 6.1 Protein, DNA and RNA chains

In the following table, the column labelled ‘#RSRZ> 2’ contains the number (and percentage) of RSRZ outliers, followed by percent RSRZ outliers for the chain as percentile scores relative to all X-ray entries and entries of similar resolution. The OWAB column contains the minimum, median, 95<sup>th</sup> percentile and maximum values of the occupancy-weighted average B-factor per residue. The column labelled ‘Q< 0.9’ lists the number of (and percentage) of residues with an average occupancy less than 0.9.

Mol	Chain	Analysed	<RSRZ>	#RSRZ>2		OWAB(Å <sup>2</sup> )	Q<0.9
1	A	470/471 (99%)	0.44	37 (7%)	15 15	34, 41, 47, 80	15 (3%)
1	B	471/471 (100%)	0.20	20 (4%)	40 39	34, 41, 47, 80	13 (2%)
All	All	941/942 (99%)	0.32	57 (6%)	25 24	34, 41, 47, 80	28 (2%)

All (57) RSRZ outliers are listed below:

Mol	Chain	Res	Type	RSRZ
1	B	469	LYS	9.2
1	B	0	HIS	7.6
1	B	459[A]	LYS	6.6
1	B	-1	GLY	6.5
1	A	0	HIS	6.5
1	A	245	THR	6.5
1	B	2	ALA	6.4
1	A	244	GLU	5.7
1	B	460	GLU	5.5
1	A	246	GLY	4.6
1	B	463	PHE	4.5
1	B	458	ASP	4.5
1	A	469	LYS	4.1
1	A	243	GLU	3.9
1	A	1	MET	3.8
1	B	1	MET	3.6
1	A	239	THR	3.5
1	A	2	ALA	3.5
1	A	308	VAL	3.3
1	A	195	LEU	3.3
1	A	369	ALA	3.2
1	A	188	ILE	3.2
1	A	242	ASP	3.1
1	A	241	ILE	3.1

*Continued on next page...*

*Continued from previous page...*

Mol	Chain	Res	Type	RSRZ
1	A	252	VAL	3.1
1	A	312	GLU	3.1
1	A	145[A]	GLN	2.9
1	A	250	VAL	2.8
1	A	371	PHE	2.7
1	B	461	GLY	2.7
1	A	331	ILE	2.6
1	B	93	LYS	2.6
1	B	362[A]	ARG	2.5
1	A	196	ILE	2.5
1	B	462	ILE	2.5
1	A	333	SER	2.4
1	A	13	VAL	2.4
1	A	332	CYS	2.4
1	B	468	LEU	2.3
1	B	313	GLY	2.3
1	A	231	ILE	2.3
1	A	388	LEU	2.3
1	A	310	PRO	2.2
1	B	312	GLU	2.2
1	A	367	ILE	2.2
1	B	314	ASP	2.2
1	A	190	TYR	2.2
1	A	334	TYR	2.2
1	A	184	VAL	2.1
1	B	309	LYS	2.1
1	A	228	SER	2.1
1	A	375	ILE	2.1
1	B	188	ILE	2.1
1	A	338	PHE	2.1
1	A	117[A]	GLU	2.1
1	B	335	ALA	2.0
1	A	192	ASP	2.0

## 6.2 Non-standard residues in protein, DNA, RNA chains ⓘ

There are no non-standard protein/DNA/RNA residues in this entry.

## 6.3 Carbohydrates ⓘ

There are no carbohydrates in this entry.

## 6.4 Ligands [i](#)

In the following table, the Atoms column lists the number of modelled atoms in the group and the number defined in the chemical component dictionary. LLDF column lists the quality of electron density of the group with respect to its neighbouring residues in protein, DNA or RNA chains. The B-factors column lists the minimum, median, 95<sup>th</sup> percentile and maximum values of B factors of atoms in the group. The column labelled 'Q< 0.9' lists the number of atoms with occupancy less than 0.9.

Mol	Type	Chain	Res	Atoms	RSCC	RSR	LLDF	B-factors(Å <sup>2</sup> )	Q<0.9
3	TRS	A	501	8/8	0.82	0.24	8.72	58,60,61,61	0
4	SO4	B	501	5/5	0.82	0.24	6.17	69,70,73,74	5
3	TRS	A	502	8/8	0.65	0.33	6.08	72,73,73,73	8
4	SO4	B	500	5/5	0.94	0.23	4.32	60,63,64,65	5
2	6PG	A	500	17/17	0.89	0.22	1.04	47,53,57,58	17

## 6.5 Other polymers [i](#)

There are no such residues in this entry.