



# Full wwPDB X-ray Structure Validation Report ⓘ

Jan 31, 2016 – 11:04 PM GMT

PDB ID : 1WDR  
Title : The role of an inner loop in the catalytic mechanism of soybean beta-amylase  
Authors : Kang, Y.N.; Adachi, M.; Utsumi, S.; Mikami, B.  
Deposited on : 2004-05-17  
Resolution : 1.35 Å(reported)

This is a Full wwPDB X-ray Structure Validation Report for a publicly released PDB entry.  
We welcome your comments at [validation@mail.wwpdb.org](mailto:validation@mail.wwpdb.org)  
A user guide is available at  
<http://wwpdb.org/validation/2016/XrayValidationReportHelp>  
with specific help available everywhere you see the ⓘ symbol.

---

The following versions of software and data (see [references ⓘ](#)) were used in the production of this report:

MolProbity : 4.02b-467  
Mogul : 1.7 (RC4), CSD as536be (2015)  
Xtriage (Phenix) : 1.9-1692  
EDS : rb-20026688  
Percentile statistics : 20151230.v01 (using entries in the PDB archive December 30th 2015)  
Refmac : 5.8.0135  
CCP4 : 6.5.0  
Ideal geometry (proteins) : Engh & Huber (2001)  
Ideal geometry (DNA, RNA) : Parkinson et al. (1996)  
Validation Pipeline (wwPDB-VP) : trunk26865

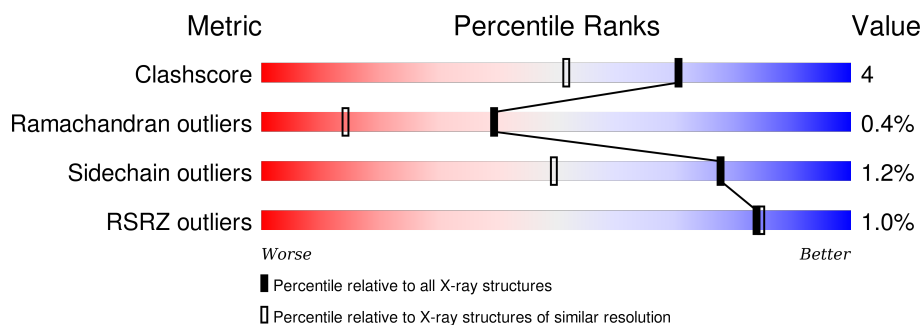
# 1 Overall quality at a glance

The following experimental techniques were used to determine the structure:

*X-RAY DIFFRACTION*

The reported resolution of this entry is 1.35 Å.

Percentile scores (ranging between 0-100) for global validation metrics of the entry are shown in the following graphic. The table shows the number of entries on which the scores are based.



Metric	Whole archive (#Entries)	Similar resolution (#Entries, resolution range(Å))
Clashscore	102246	2337 (1.40-1.32)
Ramachandran outliers	100387	2280 (1.40-1.32)
Sidechain outliers	100360	2279 (1.40-1.32)
RSRZ outliers	91569	2199 (1.40-1.32)

The table below summarises the geometric issues observed across the polymeric chains and their fit to the electron density. The red, orange, yellow and green segments on the lower bar indicate the fraction of residues that contain outliers for  $\geq 3$ , 2, 1 and 0 types of geometric quality criteria. A grey segment represents the fraction of residues that are not modelled. The numeric value for each fraction is indicated below the corresponding segment, with a dot representing fractions  $\leq 5\%$ . The upper red bar (where present) indicates the fraction of residues that have poor fit to the electron density. The numeric value is given above the bar.

Mol	Chain	Length	Quality of chain
1	A	495	

The following table lists non-polymeric compounds, carbohydrate monomers and non-standard residues in protein, DNA, RNA chains that are outliers for geometric or electron-density-fit criteria:

Mol	Type	Chain	Res	Chirality	Geometry	Clashes	Electron density
2	MAL	A	498[A]	-	-	-	X
3	GLC	A	499[B]	-	-	-	X
4	SO4	A	2000	-	-	-	X
4	SO4	A	2002	-	-	-	X

*Continued on next page...*

*Continued from previous page...*

Mol	Type	Chain	Res	Chirality	Geometry	Clashes	Electron density
4	SO4	A	2004	-	-	-	X

## 2 Entry composition [i](#)

There are 5 unique types of molecules in this entry. The entry contains 5007 atoms, of which 0 are hydrogens and 0 are deuteriums.

In the tables below, the ZeroOcc column contains the number of atoms modelled with zero occupancy, the AltConf column contains the number of residues with at least one atom in alternate conformation and the Trace column contains the number of residues modelled with at most 2 atoms.

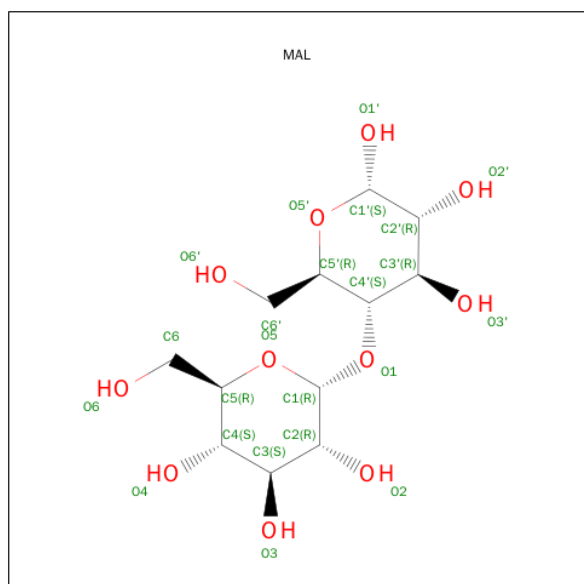
- Molecule 1 is a protein called Beta-amylase.

Mol	Chain	Residues	Atoms					ZeroOcc	AltConf	Trace
			Total	C	N	O	S			
1	A	493	4012	2573	671	750	18	0	20	0

There are 4 discrepancies between the modelled and reference sequences:

Chain	Residue	Modelled	Actual	Comment	Reference
A	76	LEU	PHE	SEE REMARK 999	UNP P10538
A	202	GLY	ARG	SEE REMARK 999	UNP P10538
A	342	SER	THR	ENGINEERED	UNP P10538
A	399	ARG	LYS	SEE REMARK 999	UNP P10538

- Molecule 2 is SUGAR (MALTOSE) (three-letter code: MAL) (formula: C<sub>12</sub>H<sub>22</sub>O<sub>11</sub>).



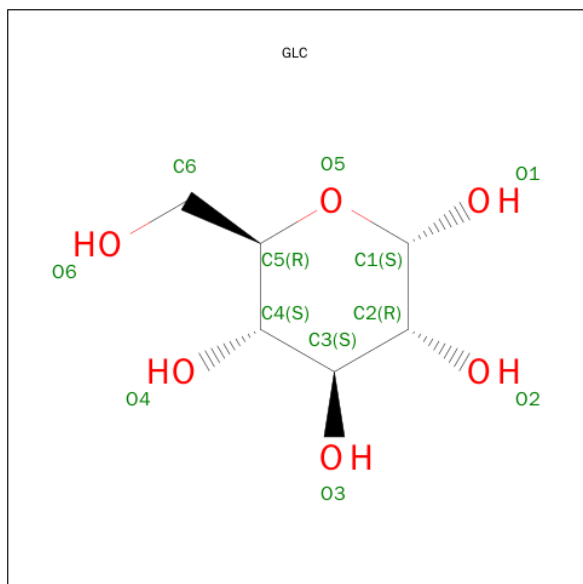
Mol	Chain	Residues	Atoms			ZeroOcc	AltConf
			Total	C	O		
2	A	1	24	12	12	0	1

*Continued on next page...*

*Continued from previous page...*

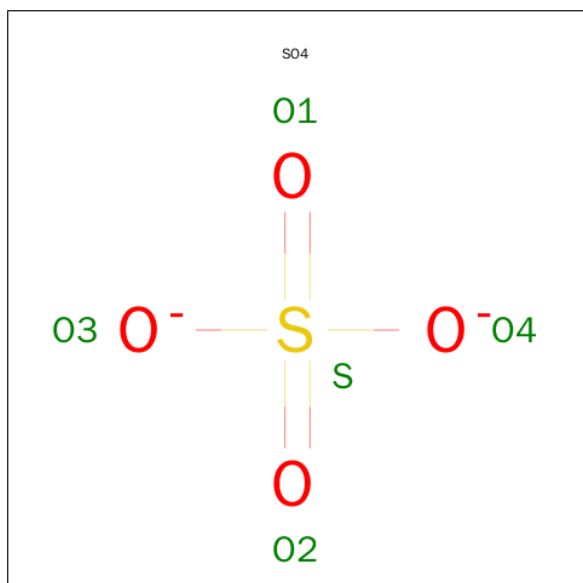
Mol	Chain	Residues	Atoms			ZeroOcc	AltConf
2	A	1	Total	C	O	0	1
			23	12	11		

- Molecule 3 is SUGAR (GLUCOSE) (three-letter code: GLC) (formula:  $C_6H_{12}O_6$ ).



Mol	Chain	Residues	Atoms			ZeroOcc	AltConf
3	A	1	Total	C	O	0	1
			12	6	6		

- Molecule 4 is SULFATE ION (three-letter code: SO4) (formula:  $O_4S$ ).



Mol	Chain	Residues	Atoms	ZeroOcc	AltConf
4	A	1	Total O S 5 4 1	0	0
4	A	1	Total O S 5 4 1	0	0
4	A	1	Total O S 5 4 1	0	0
4	A	1	Total O S 5 4 1	0	0
4	A	1	Total O S 5 4 1	0	0
4	A	1	Total O S 5 4 1	0	0

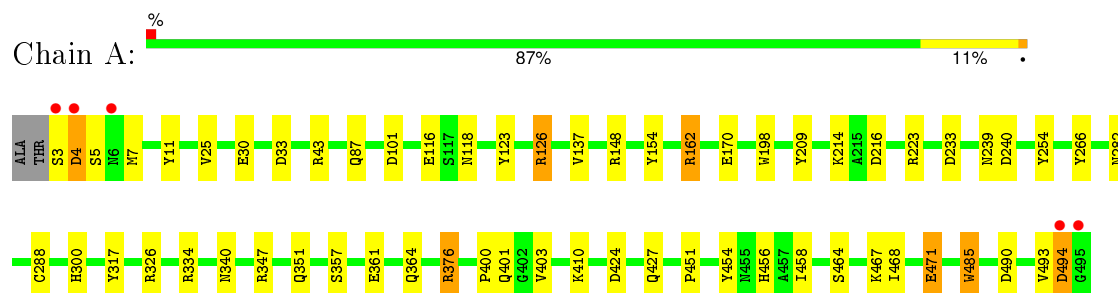
- Molecule 5 is water.

Mol	Chain	Residues	Atoms	ZeroOcc	AltConf
5	A	906	Total O 906 906	0	0

### 3 Residue-property plots

These plots are drawn for all protein, RNA and DNA chains in the entry. The first graphic for a chain summarises the proportions of errors displayed in the second graphic. The second graphic shows the sequence view annotated by issues in geometry and electron density. Residues are color-coded according to the number of geometric quality criteria for which they contain at least one outlier: green = 0, yellow = 1, orange = 2 and red = 3 or more. A red dot above a residue indicates a poor fit to the electron density ( $\text{RSRZ} > 2$ ). Stretches of 2 or more consecutive residues without any outlier are shown as a green connector. Residues present in the sample, but not in the model, are shown in grey.

#### • Molecule 1: Beta-amylase



## 4 Data and refinement statistics

Property	Value	Source
Space group	P 31 2 1	Depositor
Cell constants a, b, c, $\alpha$ , $\beta$ , $\gamma$	85.13Å 85.13Å 143.60Å 90.00° 90.00° 120.00°	Depositor
Resolution (Å)	10.00 – 1.35 40.81 – 1.35	Depositor EDS
% Data completeness (in resolution range)	94.3 (10.00-1.35) 94.9 (40.81-1.35)	Depositor EDS
$R_{merge}$	(Not available)	Depositor
$R_{sym}$	(Not available)	Depositor
$\langle I/\sigma(I) \rangle$ <sup>1</sup>	4.19 (at 1.35Å)	Xtriage
Refinement program	SHELXL-97	Depositor
R, $R_{free}$	0.114 , 0.172 0.124 , (Not available)	Depositor DCC
$R_{free}$ test set	No test flags present.	DCC
Wilson B-factor (Å <sup>2</sup> )	10.3	Xtriage
Anisotropy	0.540	Xtriage
Bulk solvent $k_{sol}$ (e/Å <sup>3</sup> ), $B_{sol}$ (Å <sup>2</sup> )	0.35 , 66.7	EDS
Estimated twinning fraction	0.019 for -h,-k,l	Xtriage
L-test for twinning <sup>2</sup>	$\langle  L  \rangle = 0.50$ , $\langle L^2 \rangle = 0.33$	Xtriage
Outliers	0 of 131324 reflections	Xtriage
$F_o, F_c$ correlation	0.98	EDS
Total number of atoms	5007	wwPDB-VP
Average B, all atoms (Å <sup>2</sup> )	18.0	wwPDB-VP

Xtriage's analysis on translational NCS is as follows: *The largest off-origin peak in the Patterson function is 4.06% of the height of the origin peak. No significant pseudotranslation is detected.*

<sup>1</sup>Intensities estimated from amplitudes.

<sup>2</sup>Theoretical values of  $\langle |L| \rangle$ ,  $\langle L^2 \rangle$  for acentric reflections are 0.5, 0.375 respectively for untwinned datasets, and 0.333, 0.2 for perfectly twinned datasets.



## 5 Model quality [i](#)

### 5.1 Standard geometry [i](#)

Bond lengths and bond angles in the following residue types are not validated in this section: CME, GLC, MAL, SO4

The Z score for a bond length (or angle) is the number of standard deviations the observed value is removed from the expected value. A bond length (or angle) with  $|Z| > 5$  is considered an outlier worth inspection. RMSZ is the root-mean-square of all Z scores of the bond lengths (or angles).

Mol	Chain	Bond lengths		Bond angles	
		RMSZ	$\# Z  > 5$	RMSZ	$\# Z  > 5$
1	A	0.71	1/4187 (0.0%)	1.28	37/5684 (0.7%)

All (1) bond length outliers are listed below:

Mol	Chain	Res	Type	Atoms	Z	Observed(Å)	Ideal(Å)
1	A	334	ARG	CD-NE	-5.08	1.37	1.46

All (37) bond angle outliers are listed below:

Mol	Chain	Res	Type	Atoms	Z	Observed(°)	Ideal(°)
1	A	334	ARG	NE-CZ-NH1	14.05	127.33	120.30
1	A	209	TYR	CB-CG-CD2	11.10	127.66	121.00
1	A	334	ARG	NE-CZ-NH2	-10.74	114.93	120.30
1	A	347	ARG	CD-NE-CZ	9.45	136.83	123.60
1	A	347	ARG	NE-CZ-NH2	9.27	124.94	120.30
1	A	11	TYR	CA-CB-CG	9.25	130.98	113.40
1	A	334	ARG	CD-NE-CZ	8.71	135.79	123.60
1	A	216	ASP	CB-CG-OD1	8.41	125.87	118.30
1	A	233	ASP	CB-CG-OD1	8.11	125.60	118.30
1	A	239	ASN	CB-CG-OD1	7.88	137.36	121.60
1	A	347	ARG	NH1-CZ-NH2	-7.20	111.48	119.40
1	A	198	TRP	C-N-CA	7.15	139.58	121.70
1	A	347	ARG	NE-CZ-NH1	6.57	123.58	120.30
1	A	33	ASP	CB-CG-OD1	6.54	124.18	118.30
1	A	300	HIS	CG-ND1-CE1	6.07	116.70	108.20
1	A	410	LYS	N-CA-CB	5.98	121.37	110.60
1	A	361	GLU	OE1-CD-OE2	-5.91	116.20	123.30
1	A	317	TYR	CB-CG-CD2	5.87	124.52	121.00
1	A	148	ARG	NE-CZ-NH1	-5.73	117.43	120.30
1	A	254	TYR	CA-CB-CG	5.64	124.12	113.40

*Continued on next page...*

*Continued from previous page...*

Mol	Chain	Res	Type	Atoms	Z	Observed(°)	Ideal(°)
1	A	87	GLN	OE1-CD-NE2	5.63	134.86	121.90
1	A	376	ARG	CD-NE-CZ	5.63	131.49	123.60
1	A	126[A]	ARG	NE-CZ-NH2	-5.48	117.56	120.30
1	A	126[B]	ARG	NE-CZ-NH2	-5.48	117.56	120.30
1	A	223	ARG	NE-CZ-NH2	5.46	123.03	120.30
1	A	154	TYR	CB-CG-CD1	5.40	124.24	121.00
1	A	266	TYR	CA-CB-CG	5.36	123.57	113.40
1	A	240	ASP	CB-CG-OD2	5.30	123.07	118.30
1	A	162	ARG	NE-CZ-NH1	5.26	122.93	120.30
1	A	101	ASP	CB-CG-OD1	-5.25	113.58	118.30
1	A	326	ARG	NE-CZ-NH1	5.20	122.90	120.30
1	A	239	ASN	OD1-CG-ND2	-5.18	109.97	121.90
1	A	464	SER	CA-CB-OG	-5.16	97.27	111.20
1	A	209	TYR	CD1-CE1-CZ	5.15	124.43	119.80
1	A	209	TYR	CD1-CG-CD2	-5.09	112.30	117.90
1	A	5	SER	O-C-N	-5.08	114.58	122.70
1	A	43	ARG	CD-NE-CZ	5.06	130.68	123.60

There are no chirality outliers.

There are no planarity outliers.

## 5.2 Too-close contacts

In the following table, the Non-H and H(model) columns list the number of non-hydrogen atoms and hydrogen atoms in the chain respectively. The H(added) column lists the number of hydrogen atoms added and optimized by MolProbity. The Clashes column lists the number of clashes within the asymmetric unit, whereas Symm-Clashes lists symmetry related clashes.

Mol	Chain	Non-H	H(model)	H(added)	Clashes	Symm-Clashes
1	A	4012	0	3907	28	0
2	A	47	0	26	3	0
3	A	12	0	10	4	0
4	A	30	0	0	0	0
5	A	906	0	0	17	0
All	All	5007	0	3943	35	0

The all-atom clashscore is defined as the number of clashes found per 1000 atoms (including hydrogen atoms). The all-atom clashscore for this structure is 4.

All (35) close contacts within the same asymmetric unit are listed below, sorted by their clash magnitude.

Atom-1	Atom-2	Interatomic distance (Å)	Clash overlap (Å)
2:A:496[A]:MAL:H1'	2:A:498[A]:MAL:O4	0.83	1.00
3:A:499[B]:GLC:C5	3:A:499[B]:GLC:O5	2.11	0.98
3:A:499[B]:GLC:C6	3:A:499[B]:GLC:C5	2.42	0.98
2:A:496[A]:MAL:H1'	2:A:498[A]:MAL:HO4	1.35	0.90
3:A:499[B]:GLC:C1	3:A:499[B]:GLC:C5	2.48	0.90
2:A:496[A]:MAL:H1'	2:A:498[A]:MAL:C4	2.08	0.84
1:A:458:ILE:HD12	5:A:1097:HOH:O	1.82	0.80
1:A:468:ILE:HD11	5:A:1301:HOH:O	1.84	0.77
1:A:30:GLU:HB2	5:A:1257:HOH:O	1.86	0.74
1:A:424:ASP:O	1:A:427[B]:GLN:HG3	1.92	0.69
1:A:116:GLU:HG2	5:A:876:HOH:O	1.93	0.68
1:A:3:SER:O	1:A:7:MET:HG2	1.96	0.66
1:A:376:ARG:HD2	5:A:982:HOH:O	1.96	0.65
1:A:471:GLU:HG3	5:A:1276:HOH:O	1.96	0.65
1:A:288:CME:HZ2	5:A:1230:HOH:O	1.96	0.64
1:A:351:GLN:HG3	1:A:357[A]:SER:OG	1.96	0.64
1:A:123:TYR:OH	1:A:137[B]:VAL:HG23	2.00	0.61
1:A:493:VAL:O	1:A:494:ASP:HB2	1.99	0.61
1:A:25[B]:VAL:HG13	5:A:1042:HOH:O	2.00	0.61
1:A:456:HIS:HD2	5:A:566:HOH:O	1.86	0.58
1:A:467:LYS:HE2	5:A:792:HOH:O	2.05	0.56
1:A:364[B]:GLN:HG2	1:A:485:TRP:CD2	2.42	0.55
1:A:401:GLN:HG2	5:A:1223:HOH:O	2.06	0.55
3:A:499[B]:GLC:C4	3:A:499[B]:GLC:O5	2.55	0.54
1:A:25[A]:VAL:HG22	5:A:1042:HOH:O	2.07	0.54
1:A:282[A]:ASN:ND2	5:A:1231:HOH:O	2.46	0.47
1:A:7:MET:SD	1:A:403[B]:VAL:HG11	2.55	0.46
1:A:214[A]:LYS:NZ	5:A:1192:HOH:O	2.49	0.46
1:A:401:GLN:HG2	5:A:1167:HOH:O	2.18	0.43
1:A:403[A]:VAL:HG22	1:A:490:ASP:OD2	2.18	0.42
1:A:126[B]:ARG:NH1	5:A:1090:HOH:O	2.52	0.42
1:A:400:PRO:HB3	1:A:485:TRP:CE2	2.56	0.41
1:A:451:PRO:HA	1:A:454:TYR:CE2	2.57	0.40
1:A:4:ASP:HB2	5:A:1342:HOH:O	2.20	0.40

There are no symmetry-related clashes.

## 5.3 Torsion angles [i](#)

### 5.3.1 Protein backbone [i](#)

In the following table, the Percentiles column shows the percent Ramachandran outliers of the chain as a percentile score with respect to all X-ray entries followed by that with respect to entries of similar resolution.

The Analysed column shows the number of residues for which the backbone conformation was analysed, and the total number of residues.

Mol	Chain	Analysed	Favoured	Allowed	Outliers	Percentiles
1	A	510/495 (103%)	499 (98%)	9 (2%)	2 (0%)	39 14

All (2) Ramachandran outliers are listed below:

Mol	Chain	Res	Type
1	A	494	ASP
1	A	4	ASP

### 5.3.2 Protein sidechains [i](#)

In the following table, the Percentiles column shows the percent sidechain outliers of the chain as a percentile score with respect to all X-ray entries followed by that with respect to entries of similar resolution.

The Analysed column shows the number of residues for which the sidechain conformation was analysed, and the total number of residues.

Mol	Chain	Analysed	Rotameric	Outliers	Percentiles
1	A	442/423 (104%)	437 (99%)	5 (1%)	80 53

All (5) residues with a non-rotameric sidechain are listed below:

Mol	Chain	Res	Type
1	A	118	ASN
1	A	162	ARG
1	A	340	ASN
1	A	471	GLU
1	A	485	TRP

Some sidechains can be flipped to improve hydrogen bonding and reduce clashes. All (11) such sidechains are listed below:

Mol	Chain	Res	Type
1	A	41	GLN
1	A	87	GLN
1	A	118	ASN
1	A	196	GLN
1	A	207	GLN
1	A	239	ASN
1	A	268	ASN
1	A	340	ASN
1	A	393	GLN
1	A	401	GLN
1	A	456	HIS

### 5.3.3 RNA ⓘ

There are no RNA molecules in this entry.

## 5.4 Non-standard residues in protein, DNA, RNA chains ⓘ

1 non-standard protein/DNA/RNA residue is modelled in this entry.

In the following table, the Counts columns list the number of bonds (or angles) for which Mogul statistics could be retrieved, the number of bonds (or angles) that are observed in the model and the number of bonds (or angles) that are defined in the chemical component dictionary. The Link column lists molecule types, if any, to which the group is linked. The Z score for a bond length (or angle) is the number of standard deviations the observed value is removed from the expected value. A bond length (or angle) with  $|Z| > 2$  is considered an outlier worth inspection. RMSZ is the root-mean-square of all Z scores of the bond lengths (or angles).

Mol	Type	Chain	Res	Link	Bond lengths			Bond angles		
					Counts	RMSZ	$\# Z  > 2$	Counts	RMSZ	$\# Z  > 2$
1	CME	A	288	1	8,9,10	0.77	0	6,9,11	2.42	2 (33%)

In the following table, the Chirals column lists the number of chiral outliers, the number of chiral centers analysed, the number of these observed in the model and the number defined in the chemical component dictionary. Similar counts are reported in the Torsion and Rings columns. '-' means no outliers of that kind were identified.

Mol	Type	Chain	Res	Link	Chirals	Torsions	Rings
1	CME	A	288	1	-	0/5/8/10	0/0/0/0

There are no bond length outliers.

All (2) bond angle outliers are listed below:

Mol	Chain	Res	Type	Atoms	Z	Observed(°)	Ideal(°)
1	A	288	CME	CZ-CE-SD	-4.90	101.19	113.16
1	A	288	CME	OH-CZ-CE	2.82	123.18	110.83

There are no chirality outliers.

There are no torsion outliers.

There are no ring outliers.

1 monomer is involved in 1 short contact:

Mol	Chain	Res	Type	Clashes	Symm-Clashes
1	A	288	CME	1	0

## 5.5 Carbohydrates [i](#)

There are no carbohydrates in this entry.

## 5.6 Ligand geometry [i](#)

10 ligands are modelled in this entry.

In the following table, the Counts columns list the number of bonds (or angles) for which Mogul statistics could be retrieved, the number of bonds (or angles) that are observed in the model and the number of bonds (or angles) that are defined in the chemical component dictionary. The Link column lists molecule types, if any, to which the group is linked. The Z score for a bond length (or angle) is the number of standard deviations the observed value is removed from the expected value. A bond length (or angle) with  $|Z| > 2$  is considered an outlier worth inspection. RMSZ is the root-mean-square of all Z scores of the bond lengths (or angles).

Mol	Type	Chain	Res	Link	Bond lengths			Bond angles		
					Counts	RMSZ	$\# Z  > 2$	Counts	RMSZ	$\# Z  > 2$
4	SO4	A	2000	-	4,4,4	0.56	0	6,6,6	0.71	0
4	SO4	A	2001	-	4,4,4	0.76	0	6,6,6	0.26	0
4	SO4	A	2002	-	4,4,4	0.45	0	6,6,6	0.35	0
4	SO4	A	2003	-	4,4,4	0.53	0	6,6,6	0.49	0
4	SO4	A	2004	-	4,4,4	0.62	0	6,6,6	0.40	0
4	SO4	A	2005	-	4,4,4	0.97	0	6,6,6	0.46	0
2	MAL	A	496[A]	-	24,24,24	1.00	0	35,35,35	1.51	8 (22%)
2	MAL	A	496[B]	-	24,24,24	1.01	0	35,35,35	1.54	8 (22%)
2	MAL	A	498[A]	2	24,24,24	0.99	1 (4%)	35,35,35	1.96	11 (31%)
3	GLC	A	499[B]	-	12,12,12	10.70	3 (25%)	17,17,17	6.52	10 (58%)

In the following table, the Chirals column lists the number of chiral outliers, the number of chiral

centers analysed, the number of these observed in the model and the number defined in the chemical component dictionary. Similar counts are reported in the Torsion and Rings columns. '-' means no outliers of that kind were identified.

Mol	Type	Chain	Res	Link	Chirals	Torsions	Rings
4	SO4	A	2000	-	-	0/0/0/0	0/0/0/0
4	SO4	A	2001	-	-	0/0/0/0	0/0/0/0
4	SO4	A	2002	-	-	0/0/0/0	0/0/0/0
4	SO4	A	2003	-	-	0/0/0/0	0/0/0/0
4	SO4	A	2004	-	-	0/0/0/0	0/0/0/0
4	SO4	A	2005	-	-	0/0/0/0	0/0/0/0
2	MAL	A	496[A]	-	-	0/8/48/48	0/2/2/2
2	MAL	A	496[B]	-	-	0/8/48/48	0/2/2/2
2	MAL	A	498[A]	2	-	0/8/48/48	0/2/2/2
3	GLC	A	499[B]	-	-	0/2/22/22	0/1/1/1

All (4) bond length outliers are listed below:

Mol	Chain	Res	Type	Atoms	Z	Observed(Å)	Ideal(Å)
3	A	499[B]	GLC	O5-C1	-2.00	1.39	1.43
2	A	498[A]	MAL	C4-C5	3.14	1.59	1.53
3	A	499[B]	GLC	C6-C5	25.55	2.42	1.51
3	A	499[B]	GLC	O5-C5	26.68	2.11	1.44

All (37) bond angle outliers are listed below:

Mol	Chain	Res	Type	Atoms	Z	Observed(°)	Ideal(°)
3	A	499[B]	GLC	C1-O5-C5	-13.92	87.73	113.47
3	A	499[B]	GLC	O5-C5-C6	-13.00	73.51	106.36
3	A	499[B]	GLC	O5-C5-C4	-11.50	88.10	109.68
3	A	499[B]	GLC	O6-C6-C5	-7.51	86.53	111.33
2	A	498[A]	MAL	O5-C5-C4	-5.00	100.29	109.68
3	A	499[B]	GLC	C6-C5-C4	-4.22	102.61	113.02
2	A	498[A]	MAL	C6-C5-C4	-4.20	102.64	113.02
2	A	496[B]	MAL	O1'-C1'-O5'	-3.68	100.17	110.25
2	A	496[B]	MAL	O2'-C2'-C1'	-3.48	102.15	109.82
2	A	496[A]	MAL	O2'-C2'-C1'	-3.48	102.15	109.82
2	A	498[A]	MAL	C3-C4-C5	-3.43	104.22	110.20
2	A	496[A]	MAL	O1'-C1'-O5'	-3.29	101.25	110.25
2	A	498[A]	MAL	O5-C5-C6	-3.17	98.35	106.36
2	A	498[A]	MAL	C2'-C3'-C4'	-3.04	102.92	109.60
2	A	498[A]	MAL	C1'-C2'-C3'	-2.94	106.06	110.43
2	A	496[B]	MAL	C4-C3-C2	-2.71	105.74	110.79
2	A	496[A]	MAL	C4-C3-C2	-2.71	105.74	110.79

*Continued on next page...*

*Continued from previous page...*

Mol	Chain	Res	Type	Atoms	Z	Observed(°)	Ideal(°)
2	A	498[A]	MAL	O3'-C3'-C2'	-2.71	104.25	110.34
2	A	496[B]	MAL	C1'-C2'-C3'	-2.55	106.64	110.43
2	A	496[A]	MAL	C1'-C2'-C3'	-2.55	106.64	110.43
3	A	499[B]	GLC	O3-C3-C2	-2.26	105.24	110.34
2	A	496[B]	MAL	O5'-C5'-C4'	-2.24	105.02	109.75
2	A	496[A]	MAL	O5'-C5'-C4'	-2.24	105.02	109.75
2	A	496[B]	MAL	O4-C4-C3	-2.23	105.31	110.34
2	A	496[A]	MAL	O4-C4-C3	-2.23	105.31	110.34
2	A	496[B]	MAL	O5-C1-C2	-2.22	105.72	110.28
2	A	496[A]	MAL	O5-C1-C2	-2.22	105.72	110.28
2	A	498[A]	MAL	O2-C2-C3	-2.06	105.71	110.34
2	A	496[B]	MAL	O1-C4'-C5'	-2.06	103.92	109.32
2	A	496[A]	MAL	O1-C4'-C5'	-2.06	103.92	109.32
3	A	499[B]	GLC	O2-C2-C3	-2.05	105.73	110.34
2	A	498[A]	MAL	O5'-C5'-C4'	-2.05	105.42	109.75
2	A	498[A]	MAL	O1'-C1'-C2'	2.85	116.86	109.21
2	A	498[A]	MAL	O5'-C1'-C2'	3.14	114.81	109.80
3	A	499[B]	GLC	O1-C1-O5	3.59	120.07	110.25
3	A	499[B]	GLC	O5-C1-C2	7.05	121.05	109.80
3	A	499[B]	GLC	C3-C4-C5	8.68	125.32	110.20

There are no chirality outliers.

There are no torsion outliers.

There are no ring outliers.

3 monomers are involved in 7 short contacts:

Mol	Chain	Res	Type	Clashes	Symm-Clashes
2	A	496[A]	MAL	3	0
2	A	498[A]	MAL	3	0
3	A	499[B]	GLC	4	0

## 5.7 Other polymers ⓘ

There are no such residues in this entry.

## 5.8 Polymer linkage issues ⓘ

There are no chain breaks in this entry.



## 6 Fit of model and data

### 6.1 Protein, DNA and RNA chains

In the following table, the column labelled ‘#RSRZ> 2’ contains the number (and percentage) of RSRZ outliers, followed by percent RSRZ outliers for the chain as percentile scores relative to all X-ray entries and entries of similar resolution. The OWAB column contains the minimum, median, 95<sup>th</sup> percentile and maximum values of the occupancy-weighted average B-factor per residue. The column labelled ‘Q< 0.9’ lists the number of (and percentage) of residues with an average occupancy less than 0.9.

Mol	Chain	Analysed	<RSRZ>	#RSRZ>2	OWAB(Å <sup>2</sup> )	Q<0.9
1	A	492/495 (99%)	-0.43	5 (1%) 84 85	8, 12, 25, 96	0

All (5) RSRZ outliers are listed below:

Mol	Chain	Res	Type	RSRZ
1	A	3	SER	13.3
1	A	495	GLY	10.1
1	A	4	ASP	3.6
1	A	6	ASN	2.8
1	A	494	ASP	2.5

### 6.2 Non-standard residues in protein, DNA, RNA chains

In the following table, the Atoms column lists the number of modelled atoms in the group and the number defined in the chemical component dictionary. LLDF column lists the quality of electron density of the group with respect to its neighbouring residues in protein, DNA or RNA chains. The B-factors column lists the minimum, median, 95<sup>th</sup> percentile and maximum values of B factors of atoms in the group. The column labelled ‘Q< 0.9’ lists the number of atoms with occupancy less than 0.9.

Mol	Type	Chain	Res	Atoms	RSCC	RSR	LLDF	B-factors(Å <sup>2</sup> )	Q<0.9
1	CME	A	288	10/11	0.97	0.08	-	11,15,44,49	0

### 6.3 Carbohydrates

There are no carbohydrates in this entry.

## 6.4 Ligands

In the following table, the Atoms column lists the number of modelled atoms in the group and the number defined in the chemical component dictionary. LLDF column lists the quality of electron density of the group with respect to its neighbouring residues in protein, DNA or RNA chains. The B-factors column lists the minimum, median, 95<sup>th</sup> percentile and maximum values of B factors of atoms in the group. The column labelled 'Q< 0.9' lists the number of atoms with occupancy less than 0.9.

Mol	Type	Chain	Res	Atoms	RSCC	RSR	LLDF	B-factors(Å <sup>2</sup> )	Q<0.9
4	SO4	A	2002	5/5	0.88	0.23	37.07	78,81,96,122	0
4	SO4	A	2000	5/5	0.89	0.13	6.65	52,55,67,69	0
2	MAL	A	498[A]	23/23	0.90	0.12	4.93	13,20,22,24	23
3	GLC	A	499[B]	12/12	0.96	0.10	4.36	16,21,24,25	12
4	SO4	A	2004	5/5	0.99	0.07	2.49	14,16,17,19	0
4	SO4	A	2005	5/5	0.98	0.12	1.97	26,31,36,42	0
2	MAL	A	496[B]	23/23	0.98	0.05	-0.50	10,12,16,20	1
2	MAL	A	496[A]	23/23	0.98	0.05	-0.50	10,12,16,19	1
4	SO4	A	2001	5/5	0.93	0.17	-	37,39,57,63	0
4	SO4	A	2003	5/5	0.98	0.11	-	26,27,42,46	0

## 6.5 Other polymers

There are no such residues in this entry.