



Full wwPDB X-ray Structure Validation Report ⓘ

Feb 1, 2016 – 02:13 PM GMT

PDB ID : 3WEZ
Title : Crystal structure of human beta-galactosidase in complex with NOEV
Authors : Suzuki, H.; Ohto, U.; Shimizu, T.
Deposited on : 2013-07-16
Resolution : 2.11 Å(reported)

This is a Full wwPDB X-ray Structure Validation Report for a publicly released PDB entry.
We welcome your comments at validation@mail.wwpdb.org
A user guide is available at
<http://wwpdb.org/validation/2016/XrayValidationReportHelp>
with specific help available everywhere you see the ⓘ symbol.

The following versions of software and data (see [references ⓘ](#)) were used in the production of this report:

MolProbity : 4.02b-467
Mogul : 1.7 (RC4), CSD as536be (2015)
Xtriage (Phenix) : 1.9-1692
EDS : rb-20026688
Percentile statistics : 20151230.v01 (using entries in the PDB archive December 30th 2015)
Refmac : 5.8.0135
CCP4 : 6.5.0
Ideal geometry (proteins) : Engh & Huber (2001)
Ideal geometry (DNA, RNA) : Parkinson et al. (1996)
Validation Pipeline (wwPDB-VP) : trunk26865

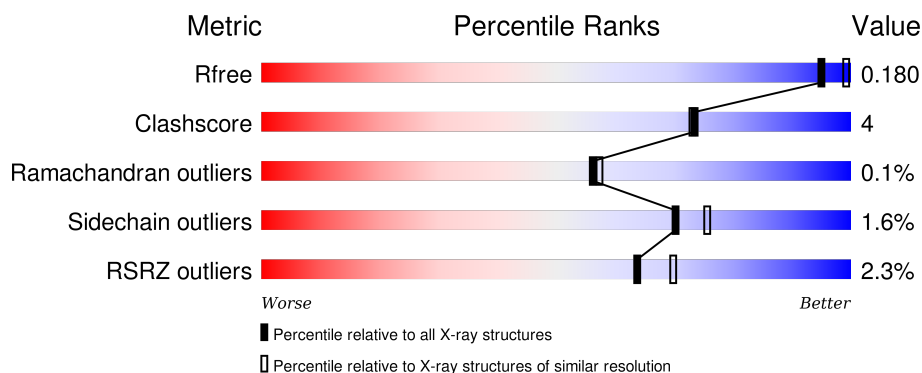
1 Overall quality at a glance

The following experimental techniques were used to determine the structure:

X-RAY DIFFRACTION

The reported resolution of this entry is 2.11 Å.

Percentile scores (ranging between 0-100) for global validation metrics of the entry are shown in the following graphic. The table shows the number of entries on which the scores are based.



Metric	Whole archive (#Entries)	Similar resolution (#Entries, resolution range(Å))
R_{free}	91344	4587 (2.14-2.10)
Clashscore	102246	5132 (2.14-2.10)
Ramachandran outliers	100387	5080 (2.14-2.10)
Sidechain outliers	100360	5081 (2.14-2.10)
RSRZ outliers	91569	4597 (2.14-2.10)

The table below summarises the geometric issues observed across the polymeric chains and their fit to the electron density. The red, orange, yellow and green segments on the lower bar indicate the fraction of residues that contain outliers for ≥ 3 , 2, 1 and 0 types of geometric quality criteria. A grey segment represents the fraction of residues that are not modelled. The numeric value for each fraction is indicated below the corresponding segment, with a dot representing fractions $\leq 5\%$. The upper red bar (where present) indicates the fraction of residues that have poor fit to the electron density. The numeric value is given above the bar.

Mol	Chain	Length	Quality of chain
1	A	678	<div> <div style="width: 100%; height: 10px; background-color: red; position: relative;"> % </div> <div style="display: flex; justify-content: space-between; margin-top: 5px;"> 80% 9% 11% </div> </div>
1	B	678	<div> <div style="width: 100%; height: 10px; background-color: red; position: relative;"> % </div> <div style="display: flex; justify-content: space-between; margin-top: 5px;"> 81% 8% 11% </div> </div>
1	C	678	<div> <div style="width: 100%; height: 10px; background-color: red; position: relative;"> 3% </div> <div style="display: flex; justify-content: space-between; margin-top: 5px;"> 81% 8% 11% </div> </div>
1	D	678	<div> <div style="width: 100%; height: 10px; background-color: red; position: relative;"> 3% </div> <div style="display: flex; justify-content: space-between; margin-top: 5px;"> 79% 10% 11% </div> </div>

The following table lists non-polymeric compounds, carbohydrate monomers and non-standard

residues in protein, DNA, RNA chains that are outliers for geometric or electron-density-fit criteria:

Mol	Type	Chain	Res	Chirality	Geometry	Clashes	Electron density
2	NAG	A	703	-	-	-	X
2	NAG	B	703	-	-	-	X
4	N8V	A	706	-	-	-	X
4	N8V	B	706	-	-	-	X
4	N8V	C	706	-	-	-	X
4	N8V	D	706	-	-	-	X
5	SO4	A	708	-	-	-	X
5	SO4	B	708	-	-	-	X
6	EDO	A	709	-	-	-	X
6	EDO	B	710	-	-	-	X
6	EDO	C	709	-	-	X	X

2 Entry composition

There are 7 unique types of molecules in this entry. The entry contains 21184 atoms, of which 0 are hydrogens and 0 are deuteriums.

In the tables below, the ZeroOcc column contains the number of atoms modelled with zero occupancy, the AltConf column contains the number of residues with at least one atom in alternate conformation and the Trace column contains the number of residues modelled with at most 2 atoms.

- Molecule 1 is a protein called Beta-galactosidase.

Mol	Chain	Residues	Atoms					ZeroOcc	AltConf	Trace
1	A	605	Total	C	N	O	S	0	9	0
			4842	3139	798	887	18			
1	B	605	Total	C	N	O	S	0	6	0
			4829	3133	795	884	17			
1	C	603	Total	C	N	O	S	0	6	0
			4810	3122	790	881	17			
1	D	602	Total	C	N	O	S	0	10	0
			4810	3118	791	883	18			

There are 96 discrepancies between the modelled and reference sequences:

Chain	Residue	Modelled	Actual	Comment	Reference
A	0	GLU	-	EXPRESSION TAG	UNP P16278
A	1	ALA	-	EXPRESSION TAG	UNP P16278
A	2	GLU	-	EXPRESSION TAG	UNP P16278
A	3	ALA	-	EXPRESSION TAG	UNP P16278
A	4	TYR	-	EXPRESSION TAG	UNP P16278
A	5	VAL	-	EXPRESSION TAG	UNP P16278
A	6	GLU	-	EXPRESSION TAG	UNP P16278
A	7	PHE	-	EXPRESSION TAG	UNP P16278
A	8	HIS	-	EXPRESSION TAG	UNP P16278
A	9	HIS	-	EXPRESSION TAG	UNP P16278
A	10	HIS	-	EXPRESSION TAG	UNP P16278
A	11	HIS	-	EXPRESSION TAG	UNP P16278
A	12	HIS	-	EXPRESSION TAG	UNP P16278
A	13	HIS	-	EXPRESSION TAG	UNP P16278
A	14	ASP	-	EXPRESSION TAG	UNP P16278
A	15	TYR	-	EXPRESSION TAG	UNP P16278
A	16	LYS	-	EXPRESSION TAG	UNP P16278
A	17	ASP	-	EXPRESSION TAG	UNP P16278
A	18	ASP	-	EXPRESSION TAG	UNP P16278
A	19	ASP	-	EXPRESSION TAG	UNP P16278
A	20	ASP	-	EXPRESSION TAG	UNP P16278

Continued on next page...

Continued from previous page...

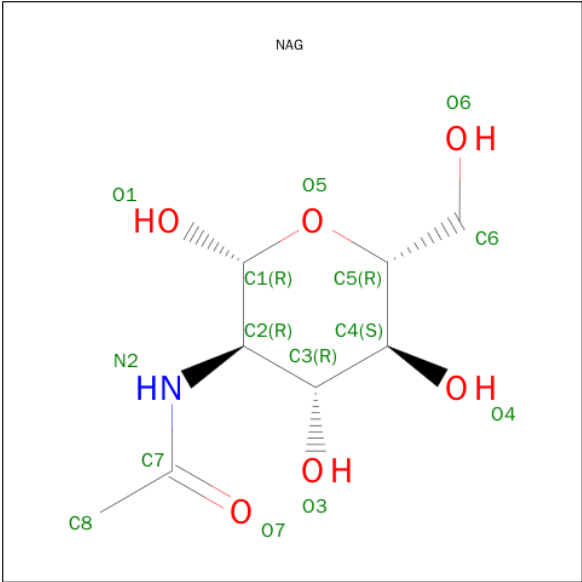
Chain	Residue	Modelled	Actual	Comment	Reference
A	21	LYS	-	EXPRESSION TAG	UNP P16278
A	22	THR	-	EXPRESSION TAG	UNP P16278
A	23	SER	-	EXPRESSION TAG	UNP P16278
B	0	GLU	-	EXPRESSION TAG	UNP P16278
B	1	ALA	-	EXPRESSION TAG	UNP P16278
B	2	GLU	-	EXPRESSION TAG	UNP P16278
B	3	ALA	-	EXPRESSION TAG	UNP P16278
B	4	TYR	-	EXPRESSION TAG	UNP P16278
B	5	VAL	-	EXPRESSION TAG	UNP P16278
B	6	GLU	-	EXPRESSION TAG	UNP P16278
B	7	PHE	-	EXPRESSION TAG	UNP P16278
B	8	HIS	-	EXPRESSION TAG	UNP P16278
B	9	HIS	-	EXPRESSION TAG	UNP P16278
B	10	HIS	-	EXPRESSION TAG	UNP P16278
B	11	HIS	-	EXPRESSION TAG	UNP P16278
B	12	HIS	-	EXPRESSION TAG	UNP P16278
B	13	HIS	-	EXPRESSION TAG	UNP P16278
B	14	ASP	-	EXPRESSION TAG	UNP P16278
B	15	TYR	-	EXPRESSION TAG	UNP P16278
B	16	LYS	-	EXPRESSION TAG	UNP P16278
B	17	ASP	-	EXPRESSION TAG	UNP P16278
B	18	ASP	-	EXPRESSION TAG	UNP P16278
B	19	ASP	-	EXPRESSION TAG	UNP P16278
B	20	ASP	-	EXPRESSION TAG	UNP P16278
B	21	LYS	-	EXPRESSION TAG	UNP P16278
B	22	THR	-	EXPRESSION TAG	UNP P16278
B	23	SER	-	EXPRESSION TAG	UNP P16278
C	0	GLU	-	EXPRESSION TAG	UNP P16278
C	1	ALA	-	EXPRESSION TAG	UNP P16278
C	2	GLU	-	EXPRESSION TAG	UNP P16278
C	3	ALA	-	EXPRESSION TAG	UNP P16278
C	4	TYR	-	EXPRESSION TAG	UNP P16278
C	5	VAL	-	EXPRESSION TAG	UNP P16278
C	6	GLU	-	EXPRESSION TAG	UNP P16278
C	7	PHE	-	EXPRESSION TAG	UNP P16278
C	8	HIS	-	EXPRESSION TAG	UNP P16278
C	9	HIS	-	EXPRESSION TAG	UNP P16278
C	10	HIS	-	EXPRESSION TAG	UNP P16278
C	11	HIS	-	EXPRESSION TAG	UNP P16278
C	12	HIS	-	EXPRESSION TAG	UNP P16278
C	13	HIS	-	EXPRESSION TAG	UNP P16278
C	14	ASP	-	EXPRESSION TAG	UNP P16278

Continued on next page...

Continued from previous page...

Chain	Residue	Modelled	Actual	Comment	Reference
C	15	TYR	-	EXPRESSION TAG	UNP P16278
C	16	LYS	-	EXPRESSION TAG	UNP P16278
C	17	ASP	-	EXPRESSION TAG	UNP P16278
C	18	ASP	-	EXPRESSION TAG	UNP P16278
C	19	ASP	-	EXPRESSION TAG	UNP P16278
C	20	ASP	-	EXPRESSION TAG	UNP P16278
C	21	LYS	-	EXPRESSION TAG	UNP P16278
C	22	THR	-	EXPRESSION TAG	UNP P16278
C	23	SER	-	EXPRESSION TAG	UNP P16278
D	0	GLU	-	EXPRESSION TAG	UNP P16278
D	1	ALA	-	EXPRESSION TAG	UNP P16278
D	2	GLU	-	EXPRESSION TAG	UNP P16278
D	3	ALA	-	EXPRESSION TAG	UNP P16278
D	4	TYR	-	EXPRESSION TAG	UNP P16278
D	5	VAL	-	EXPRESSION TAG	UNP P16278
D	6	GLU	-	EXPRESSION TAG	UNP P16278
D	7	PHE	-	EXPRESSION TAG	UNP P16278
D	8	HIS	-	EXPRESSION TAG	UNP P16278
D	9	HIS	-	EXPRESSION TAG	UNP P16278
D	10	HIS	-	EXPRESSION TAG	UNP P16278
D	11	HIS	-	EXPRESSION TAG	UNP P16278
D	12	HIS	-	EXPRESSION TAG	UNP P16278
D	13	HIS	-	EXPRESSION TAG	UNP P16278
D	14	ASP	-	EXPRESSION TAG	UNP P16278
D	15	TYR	-	EXPRESSION TAG	UNP P16278
D	16	LYS	-	EXPRESSION TAG	UNP P16278
D	17	ASP	-	EXPRESSION TAG	UNP P16278
D	18	ASP	-	EXPRESSION TAG	UNP P16278
D	19	ASP	-	EXPRESSION TAG	UNP P16278
D	20	ASP	-	EXPRESSION TAG	UNP P16278
D	21	LYS	-	EXPRESSION TAG	UNP P16278
D	22	THR	-	EXPRESSION TAG	UNP P16278
D	23	SER	-	EXPRESSION TAG	UNP P16278

- Molecule 2 is SUGAR (N-ACETYL-D-GLUCOSAMINE) (three-letter code: NAG) (formula: $C_8H_{15}NO_6$).



Mol	Chain	Residues	Atoms				ZeroOcc	AltConf
2	A	1	Total	C	N	O	0	0
			14	8	1	5		
2	A	1	Total	C	N	O	0	0
			14	8	1	5		
2	A	1	Total	C	N	O	0	0
			14	8	1	5		
2	A	1	Total	C	N	O	0	0
			14	8	1	5		
2	B	1	Total	C	N	O	0	0
			14	8	1	5		
2	B	1	Total	C	N	O	0	0
			14	8	1	5		
2	B	1	Total	C	N	O	0	0
			14	8	1	5		
2	C	1	Total	C	N	O	0	0
			14	8	1	5		
2	C	1	Total	C	N	O	0	0
			14	8	1	5		
2	C	1	Total	C	N	O	0	0
			14	8	1	5		
2	D	1	Total	C	N	O	0	0
			14	8	1	5		
2	D	1	Total	C	N	O	0	0
			14	8	1	5		

Continued on next page...

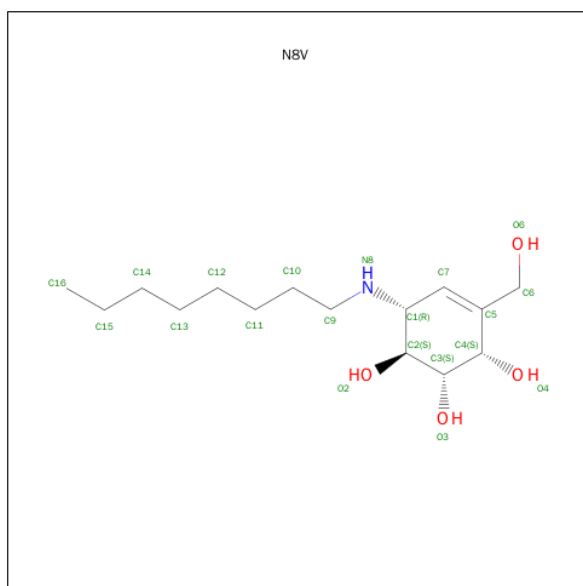
Continued from previous page...

Mol	Chain	Residues	Atoms				ZeroOcc	AltConf
2	D	1	Total	C	N	O	0	0
			14	8	1	5		
2	D	1	Total	C	N	O	0	0
			14	8	1	5		

- Molecule 3 is CHLORIDE ION (three-letter code: CL) (formula: Cl).

Mol	Chain	Residues	Atoms		ZeroOcc	AltConf
3	B	1	Total	Cl	0	0
			1	1		
3	A	1	Total	Cl	0	0
			1	1		
3	D	1	Total	Cl	0	0
			1	1		
3	C	1	Total	Cl	0	0
			1	1		

- Molecule 4 is (1S,2S,3S,6R)-4-(HYDROXYMETHYL)-6-(OCTYLAMINO)CYCLOHEX-4-ENE-1,2,3-TRIOL (three-letter code: N8V) (formula: C₁₅H₂₉NO₄).



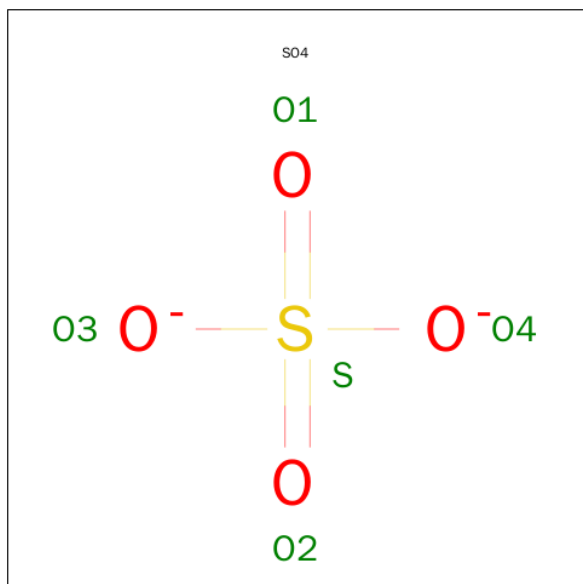
Mol	Chain	Residues	Atoms				ZeroOcc	AltConf
4	A	1	Total	C	N	O	0	0
			20	15	1	4		
4	B	1	Total	C	N	O	0	0
			20	15	1	4		
4	C	1	Total	C	N	O	0	0
			20	15	1	4		

Continued on next page...

Continued from previous page...

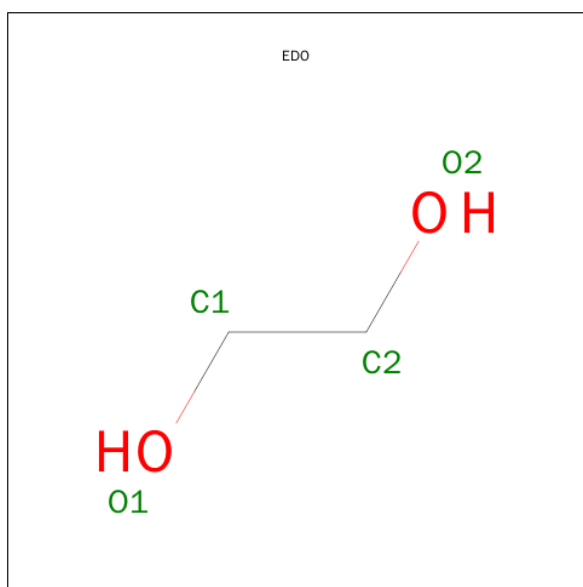
Mol	Chain	Residues	Atoms				ZeroOcc	AltConf
4	D	1	Total	C	N	O	0	0
			20	15	1	4		

- Molecule 5 is SULFATE ION (three-letter code: SO₄) (formula: O₄S).



Mol	Chain	Residues	Atoms			ZeroOcc	AltConf
5	A	1	Total	O	S	0	0
			5	4	1		
5	A	1	Total	O	S	0	0
			5	4	1		
5	B	1	Total	O	S	0	0
			5	4	1		
5	B	1	Total	O	S	0	0
			5	4	1		
5	C	1	Total	O	S	0	0
			5	4	1		
5	C	1	Total	O	S	0	0
			5	4	1		
5	D	1	Total	O	S	0	0
			5	4	1		
5	D	1	Total	O	S	0	0
			5	4	1		

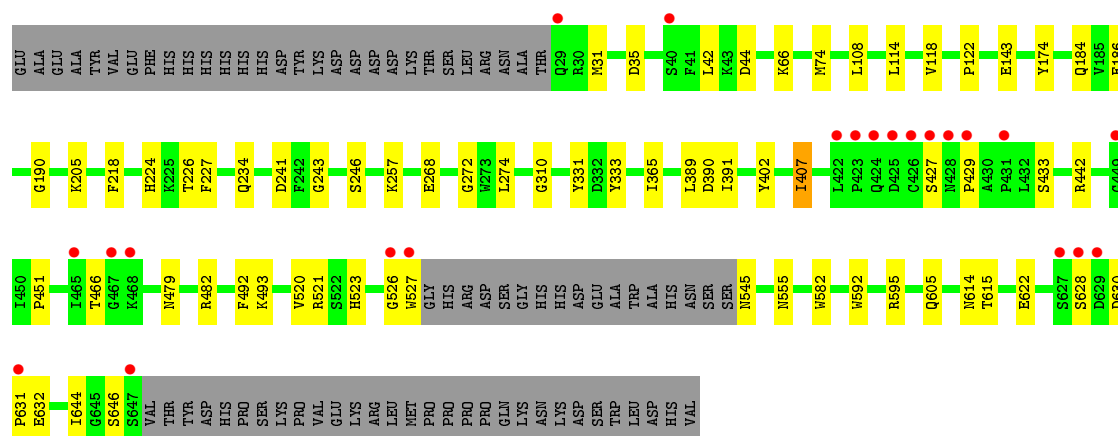
- Molecule 6 is 1,2-ETHANEDIOL (three-letter code: EDO) (formula: C₂H₆O₂).



Mol	Chain	Residues	Atoms			ZeroOcc	AltConf
6	A	1	Total	C	O	0	0
			4	2	2		
6	A	1	Total	C	O	0	0
			4	2	2		
6	B	1	Total	C	O	0	0
			4	2	2		
6	B	1	Total	C	O	0	0
			4	2	2		
6	C	1	Total	C	O	0	0
			4	2	2		
6	C	1	Total	C	O	0	0
			4	2	2		
6	D	1	Total	C	O	0	0
			4	2	2		
6	D	1	Total	C	O	0	0
			4	2	2		

- Molecule 7 is water.

Mol	Chain	Residues	Atoms		ZeroOcc	AltConf
7	A	384	Total	O	0	0
			384	384		
7	B	412	Total	O	0	0
			412	412		
7	C	365	Total	O	0	0
			365	365		
7	D	352	Total	O	0	0
			352	352		



4 Data and refinement statistics

Property	Value	Source
Space group	P 1 21 1	Depositor
Cell constants a, b, c, α , β , γ	94.93Å 115.92Å 140.51Å 90.00° 92.25° 90.00°	Depositor
Resolution (Å)	47.43 – 2.11 47.43 – 2.11	Depositor EDS
% Data completeness (in resolution range)	98.2 (47.43-2.11) 98.2 (47.43-2.11)	Depositor EDS
R_{merge}	0.14	Depositor
R_{sym}	(Not available)	Depositor
$\langle I/\sigma(I) \rangle$ ¹	3.69 (at 2.10Å)	Xtriage
Refinement program	REFMAC 5.7.0029	Depositor
R, R_{free}	0.179 , 0.225 0.181 , 0.180	Depositor DCC
R_{free} test set	8600 reflections (5.27%)	DCC
Wilson B-factor (Å ²)	20.4	Xtriage
Anisotropy	0.127	Xtriage
Bulk solvent k_{sol} (e/Å ³), B_{sol} (Å ²)	0.37 , 48.6	EDS
Estimated twinning fraction	0.024 for h,-k,-l	Xtriage
L-test for twinning ²	$\langle L \rangle = 0.50$, $\langle L^2 \rangle = 0.34$	Xtriage
Outliers	0 of 172278 reflections	Xtriage
F_o, F_c correlation	0.95	EDS
Total number of atoms	21184	wwPDB-VP
Average B, all atoms (Å ²)	22.0	wwPDB-VP

Xtriage's analysis on translational NCS is as follows: *The largest off-origin peak in the Patterson function is 2.71% of the height of the origin peak. No significant pseudotranslation is detected.*

¹Intensities estimated from amplitudes.

²Theoretical values of $\langle |L| \rangle$, $\langle L^2 \rangle$ for acentric reflections are 0.5, 0.375 respectively for untwinned datasets, and 0.333, 0.2 for perfectly twinned datasets.

5 Model quality [i](#)

5.1 Standard geometry [i](#)

Bond lengths and bond angles in the following residue types are not validated in this section: SO4, N8V, EDO, NAG, CL

The Z score for a bond length (or angle) is the number of standard deviations the observed value is removed from the expected value. A bond length (or angle) with $|Z| > 5$ is considered an outlier worth inspection. RMSZ is the root-mean-square of all Z scores of the bond lengths (or angles).

Mol	Chain	Bond lengths		Bond angles	
		RMSZ	# Z >5	RMSZ	# Z >5
1	A	0.65	0/5039	0.72	0/6873
1	B	0.66	0/5010	0.73	2/6835 (0.0%)
1	C	0.63	0/4990	0.72	0/6809
1	D	0.62	0/5014	0.72	0/6840
All	All	0.64	0/20053	0.72	2/27357 (0.0%)

There are no bond length outliers.

All (2) bond angle outliers are listed below:

Mol	Chain	Res	Type	Atoms	Z	Observed(°)	Ideal(°)
1	B	640	ASP	CB-CG-OD1	5.19	122.97	118.30
1	B	568	ASP	CB-CG-OD2	-5.12	113.69	118.30

There are no chirality outliers.

There are no planarity outliers.

5.2 Too-close contacts [i](#)

In the following table, the Non-H and H(model) columns list the number of non-hydrogen atoms and hydrogen atoms in the chain respectively. The H(added) column lists the number of hydrogen atoms added and optimized by MolProbity. The Clashes column lists the number of clashes within the asymmetric unit, whereas Symm-Clashes lists symmetry related clashes.

Mol	Chain	Non-H	H(model)	H(added)	Clashes	Symm-Clashes
1	A	4842	0	4702	43	0
1	B	4829	0	4693	37	0
1	C	4810	0	4678	36	0
1	D	4810	0	4675	47	0
2	A	56	0	52	0	0

Continued on next page...

Continued from previous page...

Mol	Chain	Non-H	H(model)	H(added)	Clashes	Symm-Clashes
2	B	56	0	52	0	0
2	C	56	0	52	0	0
2	D	56	0	52	2	0
3	A	1	0	0	0	0
3	B	1	0	0	0	0
3	C	1	0	0	0	0
3	D	1	0	0	0	0
4	A	20	0	29	0	0
4	B	20	0	29	0	0
4	C	20	0	29	0	0
4	D	20	0	29	0	0
5	A	10	0	0	0	0
5	B	10	0	0	0	0
5	C	10	0	0	1	0
5	D	10	0	0	0	0
6	A	8	0	12	0	0
6	B	8	0	12	3	0
6	C	8	0	12	4	0
6	D	8	0	12	2	0
7	A	384	0	0	4	0
7	B	412	0	0	6	0
7	C	365	0	0	4	0
7	D	352	0	0	5	0
All	All	21184	0	19120	158	0

The all-atom clashscore is defined as the number of clashes found per 1000 atoms (including hydrogen atoms). The all-atom clashscore for this structure is 4.

All (158) close contacts within the same asymmetric unit are listed below, sorted by their clash magnitude.

Atom-1	Atom-2	Interatomic distance (Å)	Clash overlap (Å)
1:A:407:ILE:CD1	1:A:492:PHE:O	2.19	0.90
1:C:405:THR:H	1:C:408:GLN:HE21	1.19	0.88
1:A:437:ASN:HD21	1:A:458:ASN:H	1.12	0.88
1:A:407:ILE:HD11	1:A:492:PHE:O	1.72	0.87
1:C:243:GLY:H	6:C:709:EDO:H11	1.42	0.83
1:B:121:ARG:HH11	1:B:184:GLN:HE22	1.24	0.82
1:B:330:SER:H	1:B:598:GLN:HE22	1.36	0.74
1:D:407:ILE:CD1	1:D:492:PHE:O	2.38	0.72
1:A:396:GLY:HA3	1:C:527:TRP:HD1	1.56	0.70
1:A:382:LEU:HD23	1:A:524:LEU:HD12	1.74	0.69

Continued on next page...

Continued from previous page...

Atom-1	Atom-2	Interatomic distance (Å)	Clash overlap (Å)
1:B:246:SER:OG	6:B:709:EDO:H21	1.94	0.68
1:A:318:ASN:HD21	1:A:590:ARG:HH21	1.42	0.68
1:A:407:ILE:HD12	1:A:407:ILE:H	1.58	0.68
1:A:396:GLY:HA3	1:C:527:TRP:CD1	2.29	0.67
1:B:399:LYS:HE2	1:D:527:TRP:HE3	1.59	0.67
1:C:37:SER:HA	7:C:1111:HOH:O	1.95	0.66
1:A:30:ARG:HA	1:A:44:ASP:OD1	1.95	0.65
1:A:330:SER:H	1:A:598:GLN:HE22	1.43	0.64
1:A:327:GLN:HE22	1:A:484:ASN:HD21	1.46	0.64
1:D:402:TYR:CZ	2:D:702:NAG:H5	2.33	0.63
1:A:397:PRO:HG3	1:A:512:PHE:CE2	2.33	0.63
1:B:105:GLU:O	1:B:109:ARG:HG3	1.98	0.62
1:D:241:ASP:HB2	1:D:268:GLU:HB2	1.82	0.61
1:A:407:ILE:HD12	1:A:407:ILE:N	2.16	0.60
1:A:112:HIS:CD2	7:A:854:HOH:O	2.54	0.60
1:D:545:ASN:N	7:D:980:HOH:O	2.35	0.60
1:D:390:ASP:HB2	1:D:391:ILE:HD12	1.84	0.60
1:B:628:SER:HB3	7:B:1089:HOH:O	2.01	0.60
1:C:580:GLN:HE22	1:C:590:ARG:HG2	1.67	0.59
1:A:112:HIS:HD2	7:A:854:HOH:O	1.84	0.59
1:B:121:ARG:HH11	1:B:184:GLN:NE2	1.96	0.58
1:D:407:ILE:N	1:D:407:ILE:HD12	2.18	0.58
1:B:330:SER:H	1:B:598:GLN:NE2	2.02	0.58
1:C:327:GLN:HE22	1:C:484:ASN:HD21	1.52	0.58
1:A:437:ASN:HD21	1:A:458:ASN:N	1.94	0.57
1:D:407:ILE:H	1:D:407:ILE:CD1	2.16	0.57
1:C:405:THR:H	1:C:408:GLN:NE2	1.95	0.57
1:C:234:GLN:HE21	1:C:235:GLY:H	1.50	0.56
1:A:407:ILE:H	1:A:407:ILE:CD1	2.19	0.56
1:C:246:SER:OG	6:C:709:EDO:H12	2.06	0.56
1:B:382:LEU:HD23	1:B:524:LEU:HD12	1.88	0.56
1:D:143:GLU:HG2	7:D:942:HOH:O	2.06	0.56
1:D:407:ILE:HD11	1:D:492:PHE:O	2.06	0.55
1:B:502:SER:O	1:B:503:SER:HB2	2.06	0.55
1:B:399:LYS:HE2	1:D:527:TRP:CE3	2.40	0.55
1:A:502:SER:O	1:A:503:SER:HB2	2.07	0.55
1:B:611:SER:HB3	7:B:835:HOH:O	2.07	0.55
1:B:372:PHE:HB2	1:B:567:GLN:HE21	1.72	0.54
1:D:407:ILE:H	1:D:407:ILE:HD12	1.72	0.54
1:D:246:SER:OG	6:D:709:EDO:H12	2.08	0.54
1:B:243:GLY:H	6:B:709:EDO:H22	1.73	0.53

Continued on next page...

Continued from previous page...

Atom-1	Atom-2	Interatomic distance (Å)	Clash overlap (Å)
1:D:442:ARG:NH1	1:D:622:GLU:OE2	2.29	0.53
1:C:243:GLY:N	6:C:709:EDO:H11	2.20	0.53
1:A:318:ASN:HD21	1:A:590:ARG:NH2	2.08	0.52
1:A:92:TRP:CH2	1:A:410:LYS:HG3	2.45	0.52
1:D:407:ILE:HD13	1:D:492:PHE:O	2.10	0.52
1:C:287:GLU:HG3	7:C:1140:HOH:O	2.10	0.51
1:D:523:HIS:HE1	1:D:615:THR:HG21	1.74	0.51
1:B:109:ARG:O	1:B:113:GLU:HG3	2.11	0.50
1:B:352:ASN:HA	1:B:355:GLN:HE21	1.76	0.50
1:B:175:GLN:HB3	7:B:806:HOH:O	2.11	0.50
1:C:319:GLY:HA3	1:C:484:ASN:HD22	1.76	0.50
1:B:243:GLY:H	6:B:709:EDO:C2	2.24	0.50
1:D:31:MET:HE2	7:D:1034:HOH:O	2.11	0.50
1:D:479:ASN:OD1	1:D:493:LYS:HE3	2.11	0.50
1:B:70:LEU:HD23	1:B:366:PRO:HG3	1.94	0.50
2:D:703:NAG:H62	7:D:999:HOH:O	2.13	0.49
1:A:407:ILE:HD13	1:A:492:PHE:O	2.10	0.49
1:C:35:ASP:HB2	1:C:42:LEU:HG	1.94	0.49
1:C:184:GLN:HB2	1:C:218:PHE:CZ	2.48	0.48
1:B:628:SER:OG	1:B:630:ASP:HB3	2.12	0.48
1:C:190:GLY:HA3	1:C:227:PHE:O	2.13	0.48
1:D:224:HIS:CE1	1:D:226:THR:HG23	2.48	0.48
1:B:529:HIS:HD2	7:B:1013:HOH:O	1.97	0.48
1:D:184:GLN:HB2	1:D:218:PHE:CZ	2.49	0.47
1:B:35:ASP:HB2	1:B:42:LEU:HG	1.96	0.47
1:A:35:ASP:HB2	1:A:42:LEU:HG	1.95	0.47
1:D:407:ILE:N	1:D:407:ILE:CD1	2.76	0.47
1:D:66:LYS:HE3	1:D:114:LEU:HD21	1.96	0.47
1:C:72:MET:HB3	1:C:77:LEU:HD12	1.97	0.47
1:C:324:TYR:N	5:C:708:SO4:O1	2.42	0.47
1:B:121:ARG:NH1	1:B:184:GLN:HE22	2.02	0.47
1:C:579:GLY:HA3	1:C:619:LEU:O	2.14	0.46
1:C:502:SER:O	1:C:503:SER:HB2	2.16	0.46
1:B:241:ASP:HB2	1:B:268:GLU:HB2	1.97	0.46
1:C:592:TRP:CE2	1:C:595:ARG:HG3	2.49	0.46
1:B:63:PHE:CD2	1:B:606:HIS:HB3	2.50	0.46
1:C:234:GLN:NE2	1:C:235:GLY:H	2.14	0.46
1:D:190:GLY:HA3	1:D:227:PHE:O	2.16	0.46
1:D:391:ILE:H	1:D:391:ILE:HD12	1.81	0.45
1:B:482:ARG:HG2	1:B:493:LYS:HE2	1.97	0.45
1:D:451:PRO:HG2	7:D:947:HOH:O	2.17	0.45

Continued on next page...

Continued from previous page...

Atom-1	Atom-2	Interatomic distance (Å)	Clash overlap (Å)
1:D:592:TRP:CE2	1:D:595:ARG:HG3	2.51	0.45
1:D:492:PHE:O	1:D:493:LYS:HB2	2.16	0.45
1:D:391:ILE:HD12	1:D:391:ILE:N	2.31	0.45
1:A:310:GLY:HA3	1:A:331:TYR:O	2.17	0.45
1:D:482:ARG:HG2	1:D:493:LYS:HE2	1.97	0.45
1:B:310:GLY:HA3	1:B:331:TYR:O	2.17	0.45
1:B:122:PRO:HD2	1:B:184:GLN:O	2.16	0.45
1:C:243:GLY:H	6:C:709:EDO:C1	2.23	0.45
1:A:101:ASP:HB3	7:A:979:HOH:O	2.17	0.45
1:D:74:MET:HB3	1:D:365:ILE:HG12	1.98	0.45
1:A:440:HIS:HA	1:A:441:ASP:HA	1.67	0.45
1:B:440:HIS:HA	1:B:441:ASP:HA	1.72	0.45
1:D:122:PRO:HD2	1:D:184:GLN:O	2.16	0.44
1:A:100:GLU:HB3	1:A:101:ASP:H	1.56	0.44
1:A:174:TYR:HA	1:A:178:GLY:O	2.17	0.44
1:A:330:SER:H	1:A:598:GLN:NE2	2.13	0.44
1:C:572[B]:GLN:HG3	1:C:574:PRO:HD3	1.98	0.44
1:D:630:ASP:OD1	1:D:632:GLU:HB2	2.18	0.44
1:A:155:LEU:HD22	1:A:202:PHE:CD2	2.53	0.44
1:C:122:PRO:HD2	1:C:184:GLN:O	2.18	0.43
1:D:243:GLY:H	6:D:709:EDO:H11	1.83	0.43
1:A:72:MET:HG2	1:A:308:PHE:CD1	2.53	0.43
1:A:318:ASN:ND2	1:A:590:ARG:HH21	2.14	0.43
1:D:310:GLY:HA3	1:D:331:TYR:O	2.18	0.43
1:D:526:GLY:O	1:D:527:TRP:C	2.57	0.43
1:D:520:VAL:HG11	1:D:582:TRP:CG	2.54	0.43
1:B:154:TYR:HE2	1:B:199:TYR:CE1	2.37	0.42
1:C:519:ALA:HB1	1:C:524:LEU:HD13	2.00	0.42
1:C:241:ASP:HB2	1:C:268:GLU:HB2	2.02	0.42
1:D:272:GLY:HA3	1:D:333:TYR:O	2.19	0.42
1:B:141:GLU:HG2	7:B:942:HOH:O	2.20	0.42
1:B:598:GLN:HA	1:B:644:ILE:HA	2.01	0.42
1:D:630:ASP:HA	1:D:631:PRO:HD2	1.92	0.42
1:D:35:ASP:HB2	1:D:42:LEU:HG	2.02	0.42
1:A:38[B]:ARG:HH21	1:A:47:PRO:HG3	1.84	0.42
1:C:37:SER:CA	7:C:1111:HOH:O	2.61	0.42
1:C:270:TYR:HA	1:C:306:TYR:O	2.19	0.42
1:A:184:GLN:HB2	1:A:218:PHE:CZ	2.55	0.41
1:A:321:ASN:ND2	1:A:327:GLN:HE21	2.18	0.41
1:D:389:LEU:HA	1:D:389:LEU:HD23	1.90	0.41
1:A:442:ARG:HD3	1:A:578:LYS:HE3	2.01	0.41

Continued on next page...

Continued from previous page...

Atom-1	Atom-2	Interatomic distance (Å)	Clash overlap (Å)
1:D:592:TRP:CZ2	1:D:595:ARG:HG3	2.55	0.41
1:C:390:ASP:HB2	7:C:817:HOH:O	2.21	0.41
1:A:238:THR:HB	1:A:259:GLU:HG2	2.02	0.41
1:C:433:SER:HA	1:C:461:ILE:O	2.21	0.41
1:C:456:GLU:HB2	1:C:459:ASN:HB3	2.02	0.41
1:B:190:GLY:HA3	1:B:227:PHE:O	2.20	0.41
1:A:89:HIS:HE1	1:A:102:HIS:O	2.03	0.41
1:D:44:ASP:OD2	1:D:174:TYR:OH	2.29	0.41
1:A:261:LYS:HE2	7:A:820:HOH:O	2.19	0.41
1:D:555:ASN:HA	1:D:614:ASN:O	2.20	0.41
1:B:230:CYS:HB2	7:B:968:HOH:O	2.20	0.41
1:A:41:PHE:HB2	1:A:48:PHE:O	2.20	0.41
1:A:611:SER:HB2	1:B:611:SER:O	2.21	0.41
1:D:429:PRO:HA	1:D:466:THR:HG22	2.03	0.41
1:B:555:ASN:HA	1:B:614:ASN:O	2.21	0.41
1:C:580:GLN:NE2	1:C:590:ARG:HG2	2.33	0.40
1:A:629:ASP:OD1	1:A:629:ASP:N	2.54	0.40
1:D:108:LEU:HD22	1:D:118:VAL:HG11	2.02	0.40
1:C:151:ASP:HA	1:C:152:PRO:HD3	1.93	0.40
1:B:390:ASP:OD2	1:D:521:ARG:NH1	2.55	0.40
1:A:407:ILE:CD1	1:A:407:ILE:N	2.81	0.40
1:C:62:ARG:HA	1:C:65:TRP:CD2	2.57	0.40
1:C:83:TYR:CE2	1:C:128:ALA:HB2	2.56	0.40

There are no symmetry-related clashes.

5.3 Torsion angles [i](#)

5.3.1 Protein backbone [i](#)

In the following table, the Percentiles column shows the percent Ramachandran outliers of the chain as a percentile score with respect to all X-ray entries followed by that with respect to entries of similar resolution.

The Analysed column shows the number of residues for which the backbone conformation was analysed, and the total number of residues.

Mol	Chain	Analysed	Favoured	Allowed	Outliers	Percentiles	
1	A	610/678 (90%)	585 (96%)	23 (4%)	2 (0%)	46	44
1	B	607/678 (90%)	585 (96%)	22 (4%)	0	100	100

Continued on next page...

Continued from previous page...

Mol	Chain	Analysed	Favoured	Allowed	Outliers	Percentiles	
1	C	605/678 (89%)	581 (96%)	24 (4%)	0	100	100
1	D	608/678 (90%)	581 (96%)	26 (4%)	1 (0%)	52	52
All	All	2430/2712 (90%)	2332 (96%)	95 (4%)	3 (0%)	56	57

All (3) Ramachandran outliers are listed below:

Mol	Chain	Res	Type
1	D	628	SER
1	A	628	SER
1	A	611	SER

5.3.2 Protein sidechains ⓘ

In the following table, the Percentiles column shows the percent sidechain outliers of the chain as a percentile score with respect to all X-ray entries followed by that with respect to entries of similar resolution.

The Analysed column shows the number of residues for which the sidechain conformation was analysed, and the total number of residues.

Mol	Chain	Analysed	Rotameric	Outliers	Percentiles	
1	A	527/585 (90%)	518 (98%)	9 (2%)	68	73
1	B	524/585 (90%)	516 (98%)	8 (2%)	72	77
1	C	522/585 (89%)	514 (98%)	8 (2%)	72	77
1	D	526/585 (90%)	516 (98%)	10 (2%)	65	69
All	All	2099/2340 (90%)	2064 (98%)	35 (2%)	70	73

All (35) residues with a non-rotameric sidechain are listed below:

Mol	Chain	Res	Type
1	A	186	GLU
1	A	274	LEU
1	A	424	GLN
1	A	515[A]	ASP
1	A	515[B]	ASP
1	A	553	MET
1	A	605	GLN
1	A	629	ASP
1	A	631	PRO

Continued on next page...

Continued from previous page...

Mol	Chain	Res	Type
1	B	186	GLU
1	B	205	LYS
1	B	274	LEU
1	B	359	LYS
1	B	390	ASP
1	B	424	GLN
1	B	605	GLN
1	B	627	SER
1	C	31	MET
1	C	160	LYS
1	C	186	GLU
1	C	274	LEU
1	C	424	GLN
1	C	468	LYS
1	C	502	SER
1	C	605	GLN
1	D	186	GLU
1	D	205	LYS
1	D	234	GLN
1	D	274	LEU
1	D	407	ILE
1	D	427	SER
1	D	433	SER
1	D	605	GLN
1	D	644	ILE
1	D	646	SER

Some sidechains can be flipped to improve hydrogen bonding and reduce clashes. All (23) such sidechains are listed below:

Mol	Chain	Res	Type
1	A	102	HIS
1	A	112	HIS
1	A	175	GLN
1	A	318	ASN
1	A	321	ASN
1	A	355	GLN
1	A	437	ASN
1	A	484	ASN
1	A	598	GLN
1	B	184	GLN
1	B	321	ASN
1	B	355	GLN

Continued on next page...

Continued from previous page...

Mol	Chain	Res	Type
1	B	529	HIS
1	B	567	GLN
1	B	598	GLN
1	C	234	GLN
1	C	355	GLN
1	C	408	GLN
1	C	452	GLN
1	C	484	ASN
1	C	580	GLN
1	D	97	GLN
1	D	279	GLN

5.3.3 RNA [i](#)

There are no RNA molecules in this entry.

5.4 Non-standard residues in protein, DNA, RNA chains [i](#)

There are no non-standard protein/DNA/RNA residues in this entry.

5.5 Carbohydrates [i](#)

There are no carbohydrates in this entry.

5.6 Ligand geometry [i](#)

Of 40 ligands modelled in this entry, 4 are monoatomic - leaving 36 for Mogul analysis.

In the following table, the Counts columns list the number of bonds (or angles) for which Mogul statistics could be retrieved, the number of bonds (or angles) that are observed in the model and the number of bonds (or angles) that are defined in the chemical component dictionary. The Link column lists molecule types, if any, to which the group is linked. The Z score for a bond length (or angle) is the number of standard deviations the observed value is removed from the expected value. A bond length (or angle) with $|Z| > 2$ is considered an outlier worth inspection. RMSZ is the root-mean-square of all Z scores of the bond lengths (or angles).

Mol	Type	Chain	Res	Link	Bond lengths			Bond angles		
					Counts	RMSZ	# $ Z > 2$	Counts	RMSZ	# $ Z > 2$
2	NAG	A	701	1	14,14,15	1.48	2 (14%)	15,19,21	1.57	2 (13%)
2	NAG	A	702	1	14,14,15	0.47	0	15,19,21	0.86	0

Mol	Type	Chain	Res	Link	Bond lengths			Bond angles		
					Counts	RMSZ	# Z > 2	Counts	RMSZ	# Z > 2
2	NAG	A	703	1	14,14,15	0.82	0	15,19,21	2.60	8 (53%)
2	NAG	A	704	1	14,14,15	0.69	0	15,19,21	1.60	3 (20%)
4	N8V	A	706	-	20,20,20	0.96	2 (10%)	16,25,25	1.74	2 (12%)
5	SO4	A	707	-	4,4,4	0.36	0	6,6,6	0.28	0
5	SO4	A	708	-	4,4,4	0.56	0	6,6,6	0.51	0
6	EDO	A	709	-	3,3,3	0.33	0	2,2,2	1.02	0
6	EDO	A	710	-	3,3,3	0.67	0	2,2,2	0.43	0
2	NAG	B	701	1	14,14,15	1.33	1 (7%)	15,19,21	1.37	1 (6%)
2	NAG	B	702	1	14,14,15	1.08	1 (7%)	15,19,21	1.80	3 (20%)
2	NAG	B	703	1	14,14,15	0.43	0	15,19,21	3.18	10 (66%)
2	NAG	B	704	1	14,14,15	0.79	0	15,19,21	1.51	4 (26%)
4	N8V	B	706	-	20,20,20	1.02	1 (5%)	16,25,25	2.82	2 (12%)
5	SO4	B	707	-	4,4,4	0.35	0	6,6,6	0.12	0
5	SO4	B	708	-	4,4,4	0.50	0	6,6,6	0.79	0
6	EDO	B	709	-	3,3,3	0.40	0	2,2,2	1.00	0
6	EDO	B	710	-	3,3,3	0.46	0	2,2,2	0.69	0
2	NAG	C	701	1	14,14,15	0.55	0	15,19,21	1.72	3 (20%)
2	NAG	C	702	1	14,14,15	0.84	0	15,19,21	2.11	5 (33%)
2	NAG	C	703	1	14,14,15	1.04	1 (7%)	15,19,21	1.11	1 (6%)
2	NAG	C	704	1	14,14,15	1.06	0	15,19,21	1.50	2 (13%)
4	N8V	C	706	-	20,20,20	0.64	0	16,25,25	2.52	1 (6%)
5	SO4	C	707	-	4,4,4	0.42	0	6,6,6	0.18	0
5	SO4	C	708	-	4,4,4	0.60	0	6,6,6	0.81	0
6	EDO	C	709	-	3,3,3	0.45	0	2,2,2	0.74	0
6	EDO	C	710	-	3,3,3	0.62	0	2,2,2	0.32	0
2	NAG	D	701	1	14,14,15	0.27	0	15,19,21	0.53	0
2	NAG	D	702	1	14,14,15	0.85	0	15,19,21	1.41	2 (13%)
2	NAG	D	703	1	14,14,15	0.45	0	15,19,21	2.08	1 (6%)
2	NAG	D	704	1	14,14,15	1.14	0	15,19,21	1.59	2 (13%)
4	N8V	D	706	-	20,20,20	0.78	0	16,25,25	2.19	2 (12%)
5	SO4	D	707	-	4,4,4	0.44	0	6,6,6	0.47	0
5	SO4	D	708	-	4,4,4	0.43	0	6,6,6	0.65	0
6	EDO	D	709	-	3,3,3	0.30	0	2,2,2	1.05	0
6	EDO	D	710	-	3,3,3	0.59	0	2,2,2	0.50	0

In the following table, the Chirals column lists the number of chiral outliers, the number of chiral centers analysed, the number of these observed in the model and the number defined in the chemical component dictionary. Similar counts are reported in the Torsion and Rings columns. '-' means no outliers of that kind were identified.

Mol	Type	Chain	Res	Link	Chirals	Torsions	Rings
2	NAG	A	701	1	-	0/6/23/26	0/1/1/1
2	NAG	A	702	1	-	0/6/23/26	0/1/1/1
2	NAG	A	703	1	-	0/6/23/26	0/1/1/1
2	NAG	A	704	1	-	0/6/23/26	0/1/1/1
4	N8V	A	706	-	-	0/11/31/31	0/1/1/1
5	SO4	A	707	-	-	0/0/0/0	0/0/0/0
5	SO4	A	708	-	-	0/0/0/0	0/0/0/0
6	EDO	A	709	-	-	0/1/1/1	0/0/0/0
6	EDO	A	710	-	-	0/1/1/1	0/0/0/0
2	NAG	B	701	1	-	0/6/23/26	0/1/1/1
2	NAG	B	702	1	-	0/6/23/26	0/1/1/1
2	NAG	B	703	1	-	0/6/23/26	0/1/1/1
2	NAG	B	704	1	-	0/6/23/26	0/1/1/1
4	N8V	B	706	-	-	0/11/31/31	0/1/1/1
5	SO4	B	707	-	-	0/0/0/0	0/0/0/0
5	SO4	B	708	-	-	0/0/0/0	0/0/0/0
6	EDO	B	709	-	-	0/1/1/1	0/0/0/0
6	EDO	B	710	-	-	0/1/1/1	0/0/0/0
2	NAG	C	701	1	-	0/6/23/26	0/1/1/1
2	NAG	C	702	1	-	0/6/23/26	0/1/1/1
2	NAG	C	703	1	-	0/6/23/26	0/1/1/1
2	NAG	C	704	1	-	0/6/23/26	0/1/1/1
4	N8V	C	706	-	-	0/11/31/31	0/1/1/1
5	SO4	C	707	-	-	0/0/0/0	0/0/0/0
5	SO4	C	708	-	-	0/0/0/0	0/0/0/0
6	EDO	C	709	-	-	0/1/1/1	0/0/0/0
6	EDO	C	710	-	-	0/1/1/1	0/0/0/0
2	NAG	D	701	1	-	0/6/23/26	0/1/1/1
2	NAG	D	702	1	-	0/6/23/26	0/1/1/1
2	NAG	D	703	1	-	0/6/23/26	0/1/1/1
2	NAG	D	704	1	-	0/6/23/26	0/1/1/1
4	N8V	D	706	-	-	0/11/31/31	0/1/1/1
5	SO4	D	707	-	-	0/0/0/0	0/0/0/0
5	SO4	D	708	-	-	0/0/0/0	0/0/0/0
6	EDO	D	709	-	-	0/1/1/1	0/0/0/0
6	EDO	D	710	-	-	0/1/1/1	0/0/0/0

All (8) bond length outliers are listed below:

Mol	Chain	Res	Type	Atoms	Z	Observed(Å)	Ideal(Å)
2	A	701	NAG	O5-C1	-3.05	1.38	1.43
2	A	701	NAG	C2-N2	-2.94	1.41	1.46
2	B	701	NAG	C2-N2	-2.75	1.41	1.46

Continued on next page...

Continued from previous page...

Mol	Chain	Res	Type	Atoms	Z	Observed(Å)	Ideal(Å)
2	C	703	NAG	O7-C7	-2.35	1.17	1.23
2	B	702	NAG	C2-N2	-2.30	1.42	1.46
4	A	706	N8V	C2-C1	2.04	1.55	1.53
4	B	706	N8V	O4-C4	2.12	1.46	1.42
4	A	706	N8V	C1-C7	2.26	1.53	1.50

All (54) bond angle outliers are listed below:

Mol	Chain	Res	Type	Atoms	Z	Observed(°)	Ideal(°)
2	B	703	NAG	C4-C3-C2	-4.68	103.95	111.23
2	B	703	NAG	O3-C3-C4	-4.14	101.02	110.34
2	B	704	NAG	C2-N2-C7	-3.71	118.27	123.04
2	A	703	NAG	O3-C3-C4	-3.42	102.63	110.34
2	A	703	NAG	C4-C3-C2	-3.11	106.39	111.23
2	A	703	NAG	O7-C7-C8	-3.02	116.51	122.06
2	A	704	NAG	C4-C3-C2	-2.82	106.84	111.23
2	A	704	NAG	C6-C5-C4	-2.67	106.43	113.02
2	B	704	NAG	C6-C5-C4	-2.60	106.60	113.02
4	A	706	N8V	O2-C2-C3	-2.49	104.73	110.34
2	D	704	NAG	O4-C4-C3	-2.41	104.90	110.34
2	D	702	NAG	C6-C5-C4	-2.36	107.19	113.02
2	C	702	NAG	C3-C2-N2	-2.30	105.04	110.56
2	B	703	NAG	C8-C7-N2	-2.24	111.81	116.11
2	B	702	NAG	C2-N2-C7	-2.20	120.21	123.04
2	A	701	NAG	O6-C6-C5	-2.19	104.10	111.33
2	B	704	NAG	C3-C2-N2	-2.18	105.34	110.56
2	B	702	NAG	C4-C3-C2	-2.10	107.97	111.23
2	C	702	NAG	C3-C4-C5	-2.04	106.64	110.20
2	C	702	NAG	O4-C4-C3	-2.03	105.76	110.34
2	B	703	NAG	O6-C6-C5	-2.03	104.64	111.33
2	B	703	NAG	O4-C4-C5	2.03	114.61	109.24
2	B	703	NAG	C2-N2-C7	2.06	125.69	123.04
2	B	704	NAG	C1-O5-C5	2.11	114.92	112.25
2	A	703	NAG	C2-N2-C7	2.11	125.75	123.04
4	B	706	N8V	C2-C3-C4	2.14	113.33	110.73
2	C	701	NAG	C1-O5-C5	2.23	115.08	112.25
2	A	703	NAG	O5-C5-C6	2.23	112.18	107.35
4	D	706	N8V	O2-C2-C1	2.35	113.96	109.16
2	C	702	NAG	O5-C5-C6	2.41	112.56	107.35
2	A	703	NAG	O3-C3-C2	2.41	113.89	109.11
2	C	701	NAG	C3-C4-C5	2.73	114.95	110.20
2	C	704	NAG	O5-C5-C6	2.96	113.75	107.35

Continued on next page...

Continued from previous page...

Mol	Chain	Res	Type	Atoms	Z	Observed(°)	Ideal(°)
2	B	703	NAG	O7-C7-N2	3.12	128.22	121.86
2	C	703	NAG	C1-O5-C5	3.29	116.42	112.25
2	C	704	NAG	C1-O5-C5	3.63	116.86	112.25
2	A	704	NAG	C1-O5-C5	3.76	117.02	112.25
2	D	702	NAG	C1-O5-C5	3.85	117.14	112.25
2	A	703	NAG	C3-C2-N2	4.08	120.34	110.56
2	B	701	NAG	C1-O5-C5	4.11	117.46	112.25
2	B	703	NAG	C3-C2-N2	4.17	120.56	110.56
2	D	704	NAG	C1-O5-C5	4.21	117.60	112.25
2	C	701	NAG	C4-C3-C2	4.47	118.18	111.23
2	A	701	NAG	C1-O5-C5	4.51	117.97	112.25
2	B	703	NAG	O3-C3-C2	4.65	118.32	109.11
2	A	703	NAG	C1-O5-C5	5.42	119.12	112.25
2	C	702	NAG	C1-O5-C5	5.58	119.33	112.25
2	B	702	NAG	C1-O5-C5	5.71	119.50	112.25
4	A	706	N8V	C9-N8-C1	5.78	123.86	113.99
2	B	703	NAG	C1-O5-C5	6.30	120.25	112.25
2	D	703	NAG	C1-O5-C5	7.08	121.23	112.25
4	D	706	N8V	C9-N8-C1	7.86	127.40	113.99
4	C	706	N8V	C9-N8-C1	9.41	130.04	113.99
4	B	706	N8V	C9-N8-C1	10.50	131.91	113.99

There are no chirality outliers.

There are no torsion outliers.

There are no ring outliers.

6 monomers are involved in 12 short contacts:

Mol	Chain	Res	Type	Clashes	Symm-Clashes
6	B	709	EDO	3	0
5	C	708	SO4	1	0
6	C	709	EDO	4	0
2	D	702	NAG	1	0
2	D	703	NAG	1	0
6	D	709	EDO	2	0

5.7 Other polymers [i](#)

There are no such residues in this entry.

5.8 Polymer linkage issues

There are no chain breaks in this entry.

6 Fit of model and data

6.1 Protein, DNA and RNA chains

In the following table, the column labelled ‘#RSRZ> 2’ contains the number (and percentage) of RSRZ outliers, followed by percent RSRZ outliers for the chain as percentile scores relative to all X-ray entries and entries of similar resolution. The OWAB column contains the minimum, median, 95th percentile and maximum values of the occupancy-weighted average B-factor per residue. The column labelled ‘Q< 0.9’ lists the number of (and percentage) of residues with an average occupancy less than 0.9.

Mol	Chain	Analysed	<RSRZ>	#RSRZ>2	OWAB(Å ²)	Q<0.9
1	A	605/678 (89%)	-0.23	7 (1%) 81 85	11, 19, 35, 92	0
1	B	605/678 (89%)	-0.25	7 (1%) 81 85	10, 18, 33, 92	0
1	C	603/678 (88%)	-0.02	19 (3%) 51 60	11, 19, 44, 96	0
1	D	602/678 (88%)	-0.03	22 (3%) 45 54	10, 20, 44, 79	0
All	All	2415/2712 (89%)	-0.13	55 (2%) 64 70	10, 19, 39, 96	0

All (55) RSRZ outliers are listed below:

Mol	Chain	Res	Type	RSRZ
1	B	647	SER	9.3
1	C	527	TRP	9.0
1	B	646	SER	7.0
1	A	647	SER	5.6
1	A	646	SER	5.5
1	D	527	TRP	5.3
1	B	627	SER	5.0
1	D	628	SER	4.9
1	A	629	ASP	4.7
1	C	426	CYS	4.6
1	B	629	ASP	4.1
1	B	628	SER	3.9
1	D	629	ASP	3.9
1	A	628	SER	3.8
1	A	29	GLN	3.6
1	D	426	CYS	3.5
1	A	359	LYS	3.4
1	C	427	SER	3.4
1	B	29	GLN	3.4
1	C	526	GLY	3.3
1	D	468	LYS	3.3

Continued on next page...

Continued from previous page...

Mol	Chain	Res	Type	RSRZ
1	D	425	ASP	3.2
1	C	468	LYS	3.2
1	D	467	GLY	3.1
1	D	429	PRO	3.1
1	D	526	GLY	3.0
1	C	425	ASP	3.0
1	D	423	PRO	2.9
1	D	647	SER	2.9
1	C	428	ASN	2.9
1	D	29	GLN	2.8
1	C	466	THR	2.8
1	C	422	LEU	2.8
1	D	449	GLY	2.7
1	C	586[A]	PHE	2.7
1	C	429	PRO	2.5
1	D	465	ILE	2.5
1	D	424	GLN	2.5
1	D	431	PRO	2.5
1	C	465	ILE	2.5
1	D	40[A]	SER	2.4
1	C	501	LEU	2.4
1	C	431	PRO	2.4
1	C	432	LEU	2.4
1	D	427	SER	2.3
1	B	92	TRP	2.3
1	C	430	ALA	2.3
1	D	428	ASN	2.3
1	A	627	SER	2.3
1	D	631	PRO	2.2
1	C	504	ASN	2.2
1	C	29	GLN	2.1
1	D	422	LEU	2.1
1	D	627	SER	2.1
1	C	508	ASP	2.0

6.2 Non-standard residues in protein, DNA, RNA chains ⓘ

There are no non-standard protein/DNA/RNA residues in this entry.

6.3 Carbohydrates ⓘ

There are no carbohydrates in this entry.

6.4 Ligands ⓘ

In the following table, the Atoms column lists the number of modelled atoms in the group and the number defined in the chemical component dictionary. LLDF column lists the quality of electron density of the group with respect to its neighbouring residues in protein, DNA or RNA chains. The B-factors column lists the minimum, median, 95th percentile and maximum values of B factors of atoms in the group. The column labelled 'Q< 0.9' lists the number of atoms with occupancy less than 0.9.

Mol	Type	Chain	Res	Atoms	RSCC	RSR	LLDF	B-factors(Å ²)	Q<0.9
5	SO4	A	708	5/5	0.91	0.14	9.24	50,50,55,60	0
5	SO4	B	708	5/5	0.89	0.17	5.60	49,51,55,55	0
2	NAG	A	703	14/15	0.78	0.19	4.59	41,45,48,48	0
6	EDO	C	709	4/4	0.84	0.17	4.34	31,31,32,37	0
6	EDO	A	709	4/4	0.88	0.15	3.91	31,33,35,36	0
4	N8V	A	706	20/20	0.95	0.14	3.74	17,18,45,47	0
2	NAG	B	703	14/15	0.63	0.22	3.50	43,50,53,56	0
4	N8V	C	706	20/20	0.94	0.16	3.38	16,20,34,34	0
6	EDO	B	710	4/4	0.95	0.15	2.80	20,23,24,26	0
4	N8V	D	706	20/20	0.95	0.15	2.67	17,21,39,40	0
4	N8V	B	706	20/20	0.95	0.14	2.38	14,16,39,40	0
2	NAG	A	701	14/15	0.93	0.12	1.29	19,22,25,30	0
6	EDO	B	709	4/4	0.89	0.15	1.29	32,32,35,41	0
6	EDO	A	710	4/4	0.95	0.12	1.09	21,22,23,25	0
2	NAG	C	702	14/15	0.79	0.18	1.05	43,53,58,59	0
6	EDO	D	709	4/4	0.95	0.10	0.62	29,30,30,36	0
2	NAG	A	702	14/15	0.95	0.10	0.53	24,26,29,30	0
5	SO4	C	708	5/5	0.92	0.12	0.44	45,46,49,52	0
2	NAG	C	703	14/15	0.85	0.22	0.43	38,45,47,50	0
2	NAG	B	701	14/15	0.92	0.12	0.42	21,24,29,30	0
3	CL	B	705	1/1	1.00	0.09	-0.33	15,15,15,15	0
2	NAG	D	702	14/15	0.88	0.13	-0.34	34,39,43,43	0
2	NAG	C	704	14/15	0.96	0.09	-0.55	20,23,27,28	0
5	SO4	D	708	5/5	0.95	0.10	-0.73	48,50,51,54	0
2	NAG	D	704	14/15	0.97	0.09	-0.81	26,27,30,31	0
3	CL	C	705	1/1	1.00	0.10	-0.95	16,16,16,16	0
2	NAG	B	702	14/15	0.95	0.08	-1.07	23,27,28,33	0
3	CL	D	705	1/1	1.00	0.07	-3.22	16,16,16,16	0
3	CL	A	705	1/1	1.00	0.05	-4.99	15,15,15,15	0
2	NAG	A	704	14/15	0.75	0.20	-	51,62,76,80	0

Continued on next page...

Continued from previous page...

Mol	Type	Chain	Res	Atoms	RSCC	RSR	LLDF	B-factors(\AA^2)	Q<0.9
6	EDO	C	710	4/4	0.94	0.14	-	22,23,24,26	0
2	NAG	D	701	14/15	0.77	0.39	-	78,83,85,86	0
5	SO4	B	707	5/5	0.91	0.27	-	80,81,88,90	0
2	NAG	C	701	14/15	0.77	0.47	-	72,79,81,83	0
5	SO4	D	707	5/5	0.82	0.17	-	72,72,76,78	0
6	EDO	D	710	4/4	0.93	0.15	-	24,27,29,31	0
2	NAG	D	703	14/15	0.39	0.41	-	73,86,91,93	0
5	SO4	A	707	5/5	0.89	0.28	-	64,64,67,68	0
2	NAG	B	704	14/15	0.86	0.20	-	54,57,59,60	0
5	SO4	C	707	5/5	0.94	0.24	-	72,75,77,77	0

6.5 Other polymers [i](#)

There are no such residues in this entry.