



Full wwPDB X-ray Structure Validation Report ⓘ

Feb 1, 2016 – 02:16 PM GMT

PDB ID : 3WQ1
Title : Structure of hyperthermophilic family 12 endocellulase from *Pyrococcus furiosus* in complex with cello-oligosaccharide
Authors : Kataoka, M.; Ishikawa, K.
Deposited on : 2014-01-21
Resolution : 1.30 Å(reported)

This is a Full wwPDB X-ray Structure Validation Report for a publicly released PDB entry.
We welcome your comments at validation@mail.wwpdb.org
A user guide is available at
<http://wwpdb.org/validation/2016/XrayValidationReportHelp>
with specific help available everywhere you see the ⓘ symbol.

The following versions of software and data (see [references ⓘ](#)) were used in the production of this report:

MolProbity : 4.02b-467
Mogul : 1.7 (RC4), CSD as536be (2015)
Xtriage (Phenix) : 1.9-1692
EDS : rb-20026688
Percentile statistics : 20151230.v01 (using entries in the PDB archive December 30th 2015)
Refmac : 5.8.0135
CCP4 : 6.5.0
Ideal geometry (proteins) : Engh & Huber (2001)
Ideal geometry (DNA, RNA) : Parkinson et al. (1996)
Validation Pipeline (wwPDB-VP) : trunk26865

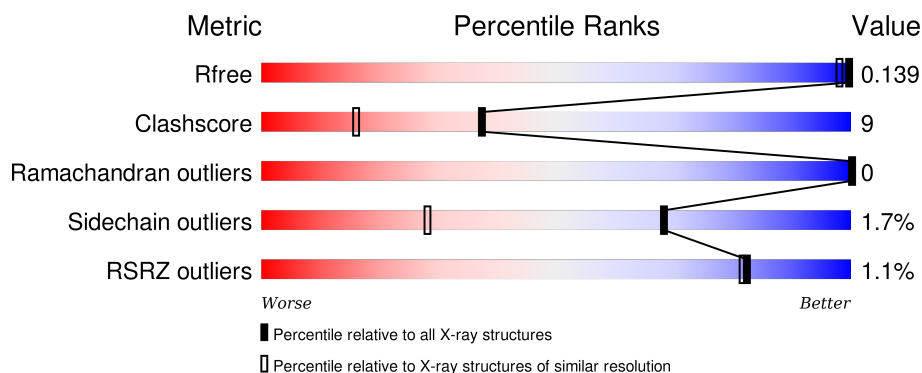
1 Overall quality at a glance

The following experimental techniques were used to determine the structure:

X-RAY DIFFRACTION

The reported resolution of this entry is 1.30 Å.

Percentile scores (ranging between 0-100) for global validation metrics of the entry are shown in the following graphic. The table shows the number of entries on which the scores are based.



Metric	Whole archive (#Entries)	Similar resolution (#Entries, resolution range(Å))
R_{free}	91344	1475 (1.34-1.26)
Clashscore	102246	1031 (1.32-1.28)
Ramachandran outliers	100387	1504 (1.34-1.26)
Sidechain outliers	100360	1503 (1.34-1.26)
RSRZ outliers	91569	1476 (1.34-1.26)

The table below summarises the geometric issues observed across the polymeric chains and their fit to the electron density. The red, orange, yellow and green segments on the lower bar indicate the fraction of residues that contain outliers for ≥ 3 , 2, 1 and 0 types of geometric quality criteria. A grey segment represents the fraction of residues that are not modelled. The numeric value for each fraction is indicated below the corresponding segment, with a dot representing fractions $\leq 5\%$. The upper red bar (where present) indicates the fraction of residues that have poor fit to the electron density. The numeric value is given above the bar.

Mol	Chain	Length	Quality of chain
1	A	319	

The following table lists non-polymeric compounds, carbohydrate monomers and non-standard residues in protein, DNA, RNA chains that are outliers for geometric or electron-density-fit criteria:

Mol	Type	Chain	Res	Chirality	Geometry	Clashes	Electron density
3	NHE	A	403	-	-	-	X

Continued on next page...

Continued from previous page...

Mol	Type	Chain	Res	Chirality	Geometry	Clashes	Electron density
3	NHE	A	406	-	-	-	X
3	NHE	A	407	-	-	X	X
4	GOL	A	408	-	-	-	X
4	GOL	A	409	-	-	-	X
4	GOL	A	410	-	-	-	X

2 Entry composition [i](#)

There are 6 unique types of molecules in this entry. The entry contains 2760 atoms, of which 0 are hydrogens and 0 are deuteriums.

In the tables below, the ZeroOcc column contains the number of atoms modelled with zero occupancy, the AltConf column contains the number of residues with at least one atom in alternate conformation and the Trace column contains the number of residues modelled with at most 2 atoms.

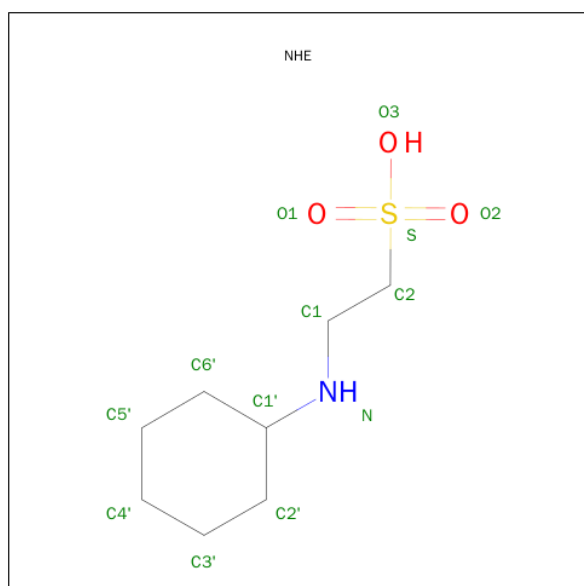
- Molecule 1 is a protein called Endoglucanase A.

Mol	Chain	Residues	Atoms					ZeroOcc	AltConf	Trace
1	A	270	Total	C	N	O	S	0	24	0
			2350	1525	375	446	4			

- Molecule 2 is CALCIUM ION (three-letter code: CA) (formula: Ca).

Mol	Chain	Residues	Atoms		ZeroOcc	AltConf
2	A	2	Total	Ca	0	0
			2	2		

- Molecule 3 is 2-[N-CYCLOHEXYLAMINO]ETHANE SULFONIC ACID (three-letter code: NHE) (formula: C₈H₁₇NO₃S).



Mol	Chain	Residues	Atoms					ZeroOcc	AltConf
3	A	1	Total	C	N	O	S	0	0
			13	8	1	3	1		
3	A	1	Total	C	N	O	S	0	0
			13	8	1	3	1		

Continued on next page...

Continued from previous page...

Mol	Chain	Residues	Atoms					ZeroOcc	AltConf
3	A	1	Total	C	N	O	S	0	0
			13	8	1	3	1		
3	A	1	Total	C	N	O	S	0	0
			13	8	1	3	1		
3	A	1	Total	C	N	O	S	0	0
			13	8	1	3	1		

- Molecule 4 is GLYCEROL (three-letter code: GOL) (formula: $C_3H_8O_3$).



Mol	Chain	Residues	Atoms			ZeroOcc	AltConf
4	A	1	Total	C	O	0	0
			6	3	3		
4	A	1	Total	C	O	0	0
			6	3	3		
4	A	1	Total	C	O	0	0
			6	3	3		

- Molecule 5 is a polymer of unknown type called SUGAR (4-MER).

Mol	Chain	Residues	Atoms			ZeroOcc	AltConf
5	A	4	Total	C	O	0	0
			45	24	21		

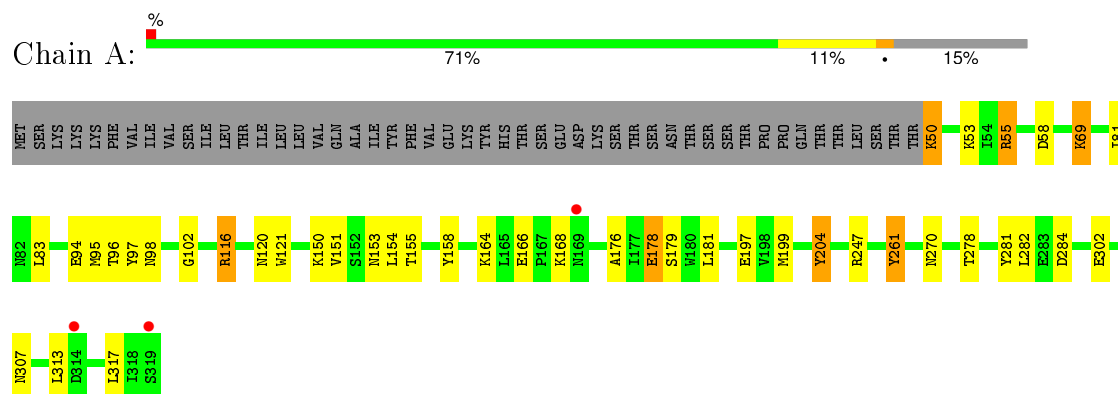
- Molecule 6 is water.

Mol	Chain	Residues	Atoms		ZeroOcc	AltConf
6	A	257	Total 280	O 280	0	23

3 Residue-property plots [i](#)

These plots are drawn for all protein, RNA and DNA chains in the entry. The first graphic for a chain summarises the proportions of errors displayed in the second graphic. The second graphic shows the sequence view annotated by issues in geometry and electron density. Residues are color-coded according to the number of geometric quality criteria for which they contain at least one outlier: green = 0, yellow = 1, orange = 2 and red = 3 or more. A red dot above a residue indicates a poor fit to the electron density ($RSRZ > 2$). Stretches of 2 or more consecutive residues without any outlier are shown as a green connector. Residues present in the sample, but not in the model, are shown in grey.

● Molecule 1: Endoglucanase A



4 Data and refinement statistics

Property	Value	Source
Space group	P 21 21 2	Depositor
Cell constants a, b, c, α , β , γ	58.14Å 118.42Å 46.79Å 90.00° 90.00° 90.00°	Depositor
Resolution (Å)	17.91 – 1.30 17.90 – 1.30	Depositor EDS
% Data completeness (in resolution range)	98.1 (17.91-1.30) 98.2 (17.90-1.30)	Depositor EDS
R_{merge}	(Not available)	Depositor
R_{sym}	0.10	Depositor
$\langle I/\sigma(I) \rangle$ ¹	7.09 (at 1.30Å)	Xtriage
Refinement program	REFMAC 5.7.0029	Depositor
R, R_{free}	0.112 , 0.139 0.111 , 0.139	Depositor DCC
R_{free} test set	3956 reflections (5.29%)	DCC
Wilson B-factor (Å ²)	8.1	Xtriage
Anisotropy	0.463	Xtriage
Bulk solvent k_{sol} (e/Å ³), B_{sol} (Å ²)	0.50 , 66.7	EDS
Estimated twinning fraction	No twinning to report.	Xtriage
L-test for twinning ²	$\langle L \rangle = 0.47$, $\langle L^2 \rangle = 0.29$	Xtriage
Outliers	0 of 78762 reflections	Xtriage
F_o, F_c correlation	0.98	EDS
Total number of atoms	2760	wwPDB-VP
Average B, all atoms (Å ²)	13.0	wwPDB-VP

Xtriage's analysis on translational NCS is as follows: *The largest off-origin peak in the Patterson function is 5.77% of the height of the origin peak. No significant pseudotranslation is detected.*

¹Intensities estimated from amplitudes.

²Theoretical values of $\langle |L| \rangle$, $\langle L^2 \rangle$ for acentric reflections are 0.5, 0.375 respectively for untwinned datasets, and 0.333, 0.2 for perfectly twinned datasets.

5 Model quality [i](#)

5.1 Standard geometry [i](#)

Bond lengths and bond angles in the following residue types are not validated in this section: NHE, GOL, CA, BGC

The Z score for a bond length (or angle) is the number of standard deviations the observed value is removed from the expected value. A bond length (or angle) with $|Z| > 5$ is considered an outlier worth inspection. RMSZ is the root-mean-square of all Z scores of the bond lengths (or angles).

Mol	Chain	Bond lengths		Bond angles	
		RMSZ	$\# Z > 5$	RMSZ	$\# Z > 5$
1	A	1.15	7/2420 (0.3%)	1.20	19/3319 (0.6%)

All (7) bond length outliers are listed below:

Mol	Chain	Res	Type	Atoms	Z	Observed(Å)	Ideal(Å)
1	A	204	TYR	CD2-CE2	10.38	1.54	1.39
1	A	204	TYR	CE2-CZ	9.81	1.51	1.38
1	A	302	GLU	CD-OE2	-8.18	1.16	1.25
1	A	204	TYR	CD1-CE1	-7.97	1.27	1.39
1	A	204	TYR	CE1-CZ	-6.04	1.30	1.38
1	A	204	TYR	CB-CG	-5.69	1.43	1.51
1	A	121	TRP	CE3-CZ3	5.13	1.47	1.38

All (19) bond angle outliers are listed below:

Mol	Chain	Res	Type	Atoms	Z	Observed(°)	Ideal(°)
1	A	204	TYR	CB-CG-CD1	-11.94	113.84	121.00
1	A	116[A]	ARG	NE-CZ-NH1	10.41	125.51	120.30
1	A	116[B]	ARG	NE-CZ-NH1	10.41	125.51	120.30
1	A	204	TYR	CZ-CE2-CD2	-8.73	111.95	119.80
1	A	178	GLU	OE1-CD-OE2	-7.18	114.68	123.30
1	A	69	LYS	CD-CE-NZ	7.16	128.16	111.70
1	A	204	TYR	CG-CD2-CE2	-6.74	115.91	121.30
1	A	284	ASP	CB-CG-OD2	-6.68	112.29	118.30
1	A	247	ARG	NE-CZ-NH2	-6.31	117.14	120.30
1	A	284	ASP	CB-CG-OD1	6.01	123.71	118.30
1	A	204	TYR	CG-CD1-CE1	5.98	126.08	121.30
1	A	261	TYR	CB-CG-CD1	-5.78	117.53	121.00
1	A	95[A]	MET	CG-SD-CE	5.72	109.36	100.20
1	A	95[B]	MET	CG-SD-CE	5.72	109.36	100.20

Continued on next page...

Continued from previous page...

Mol	Chain	Res	Type	Atoms	Z	Observed(°)	Ideal(°)
1	A	50	LYS	CD-CE-NZ	-5.67	98.65	111.70
1	A	150	LYS	CG-CD-CE	-5.49	95.42	111.90
1	A	55	ARG	NE-CZ-NH2	-5.32	117.64	120.30
1	A	204	TYR	CB-CG-CD2	5.26	124.16	121.00
1	A	178	GLU	CG-CD-OE2	5.24	128.77	118.30

There are no chirality outliers.

There are no planarity outliers.

5.2 Too-close contacts

In the following table, the Non-H and H(model) columns list the number of non-hydrogen atoms and hydrogen atoms in the chain respectively. The H(added) column lists the number of hydrogen atoms added and optimized by MolProbity. The Clashes column lists the number of clashes within the asymmetric unit, whereas Symm-Clashes lists symmetry related clashes.

Mol	Chain	Non-H	H(model)	H(added)	Clashes	Symm-Clashes
1	A	2350	0	2270	38	0
2	A	2	0	0	0	0
3	A	65	0	84	12	0
4	A	18	0	24	6	0
5	A	45	0	38	0	0
6	A	280	0	0	19	0
All	All	2760	0	2416	46	0

The all-atom clashscore is defined as the number of clashes found per 1000 atoms (including hydrogen atoms). The all-atom clashscore for this structure is 9.

All (46) close contacts within the same asymmetric unit are listed below, sorted by their clash magnitude.

Atom-1	Atom-2	Interatomic distance (Å)	Clash overlap (Å)
4:A:410:GOL:H31	6:A:741:HOH:O	1.12	1.26
3:A:407:NHE:C2	6:A:757:HOH:O	1.86	1.22
1:A:307[B]:ASN:OD1	6:A:513:HOH:O	1.64	1.14
1:A:204:TYR:CE2	6:A:737:HOH:O	1.99	1.14
1:A:97[B]:TYR:HE1	3:A:407:NHE:H4'1	1.15	1.11
1:A:120[A]:ASN:ND2	6:A:713:HOH:O	1.85	1.08
1:A:97[B]:TYR:CE1	3:A:407:NHE:H4'1	1.92	1.05
4:A:408:GOL:H31	6:A:740:HOH:O	1.58	1.03
3:A:407:NHE:HC22	6:A:757:HOH:O	1.51	0.98

Continued on next page...

Continued from previous page...

Atom-1	Atom-2	Interatomic distance (Å)	Clash overlap (Å)
1:A:204:TYR:HE2	6:A:737:HOH:O	1.40	0.96
3:A:407:NHE:HC21	6:A:757:HOH:O	1.56	0.86
1:A:97[B]:TYR:CE1	3:A:407:NHE:C4'	2.66	0.79
1:A:307[A]:ASN:OD1	3:A:407:NHE:HC22	1.86	0.76
1:A:166:GLU:O	1:A:168:LYS:HE3	1.92	0.70
1:A:168:LYS:HE2	6:A:701:HOH:O	1.92	0.70
1:A:307[A]:ASN:OD1	3:A:407:NHE:O1	2.12	0.67
1:A:53:LYS:NZ	1:A:96[B]:THR:HG21	2.08	0.67
1:A:53:LYS:HZ3	1:A:96[B]:THR:HG21	1.59	0.65
1:A:168:LYS:NZ	6:A:701:HOH:O	2.29	0.65
1:A:307[A]:ASN:OD1	3:A:407:NHE:S	2.57	0.62
1:A:102[B]:GLY:HA3	6:A:601:HOH:O	2.00	0.61
1:A:168:LYS:CE	6:A:701:HOH:O	2.49	0.61
1:A:158[B]:TYR:CE1	1:A:313:LEU:HD11	2.36	0.61
1:A:307[A]:ASN:OD1	3:A:407:NHE:C2	2.51	0.59
1:A:270:ASN:OD1	4:A:408:GOL:H11	2.04	0.56
1:A:53:LYS:HG3	1:A:96[B]:THR:HG22	1.88	0.56
1:A:98:ASN:HB2	3:A:406:NHE:O3	2.09	0.53
4:A:409:GOL:H31	6:A:560:HOH:O	2.09	0.52
4:A:408:GOL:C3	6:A:740:HOH:O	2.37	0.48
1:A:153:ASN:OD1	6:A:733:HOH:O	2.20	0.47
1:A:81:ILE:HG22	1:A:83:LEU:HG	1.95	0.47
1:A:307[A]:ASN:HA	3:A:407:NHE:HN	1.80	0.47
1:A:154[B]:LEU:HD23	1:A:317:LEU:HD22	1.97	0.46
1:A:158[B]:TYR:CD1	1:A:313:LEU:HD11	2.51	0.46
1:A:181:LEU:HA	1:A:281:TYR:O	2.17	0.44
4:A:410:GOL:C3	6:A:741:HOH:O	1.99	0.44
1:A:116[B]:ARG:NH2	6:A:629[B]:HOH:O	2.35	0.44
1:A:204:TYR:CZ	6:A:737:HOH:O	2.40	0.44
1:A:151:VAL:CG2	1:A:278:THR:HA	2.49	0.43
1:A:179:SER:HB3	1:A:282[B]:LEU:CD2	2.49	0.43
1:A:55:ARG:NH1	1:A:94[B]:GLU:OE2	2.52	0.43
1:A:151:VAL:HG23	1:A:278:THR:HA	2.01	0.42
1:A:164:LYS:HE3	1:A:166:GLU:OE2	2.20	0.41
1:A:155[A]:THR:OG1	1:A:313:LEU:O	2.37	0.41
1:A:176:ALA:HB1	1:A:199[B]:MET:SD	2.60	0.41
1:A:178:GLU:OE1	1:A:197:GLU:OE2	2.39	0.41

There are no symmetry-related clashes.

5.3 Torsion angles [i](#)

5.3.1 Protein backbone [i](#)

In the following table, the Percentiles column shows the percent Ramachandran outliers of the chain as a percentile score with respect to all X-ray entries followed by that with respect to entries of similar resolution.

The Analysed column shows the number of residues for which the backbone conformation was analysed, and the total number of residues.

Mol	Chain	Analysed	Favoured	Allowed	Outliers	Percentiles	
1	A	292/319 (92%)	285 (98%)	7 (2%)	0	100	100

There are no Ramachandran outliers to report.

5.3.2 Protein sidechains [i](#)

In the following table, the Percentiles column shows the percent sidechain outliers of the chain as a percentile score with respect to all X-ray entries followed by that with respect to entries of similar resolution.

The Analysed column shows the number of residues for which the sidechain conformation was analysed, and the total number of residues.

Mol	Chain	Analysed	Rotameric	Outliers	Percentiles	
1	A	257/284 (90%)	253 (98%)	4 (2%)	70	30

All (4) residues with a non-rotameric sidechain are listed below:

Mol	Chain	Res	Type
1	A	50	LYS
1	A	58	ASP
1	A	69	LYS
1	A	261	TYR

Some sidechains can be flipped to improve hydrogen bonding and reduce clashes. There are no such sidechains identified.

5.3.3 RNA [i](#)

There are no RNA molecules in this entry.

5.4 Non-standard residues in protein, DNA, RNA chains ⓘ

There are no non-standard protein/DNA/RNA residues in this entry.

5.5 Carbohydrates ⓘ

4 carbohydrates are modelled in this entry.

In the following table, the Counts columns list the number of bonds (or angles) for which Mogul statistics could be retrieved, the number of bonds (or angles) that are observed in the model and the number of bonds (or angles) that are defined in the chemical component dictionary. The Link column lists molecule types, if any, to which the group is linked. The Z score for a bond length (or angle) is the number of standard deviations the observed value is removed from the expected value. A bond length (or angle) with $|Z| > 2$ is considered an outlier worth inspection. RMSZ is the root-mean-square of all Z scores of the bond lengths (or angles).

Mol	Type	Chain	Res	Link	Bond lengths			Bond angles		
					Counts	RMSZ	# $ Z > 2$	Counts	RMSZ	# $ Z > 2$
5	BGC	A	411	5	11,11,12	0.80	0	14,15,17	1.10	1 (7%)
5	BGC	A	412	5	11,11,12	1.16	0	14,15,17	1.20	0
5	BGC	A	413	5	11,11,12	1.48	2 (18%)	14,15,17	1.42	3 (21%)
5	BGC	A	414	5	12,12,12	1.68	2 (16%)	17,17,17	1.92	3 (17%)

In the following table, the Chirals column lists the number of chiral outliers, the number of chiral centers analysed, the number of these observed in the model and the number defined in the chemical component dictionary. Similar counts are reported in the Torsion and Rings columns. '-' means no outliers of that kind were identified.

Mol	Type	Chain	Res	Link	Chirals	Torsions	Rings
5	BGC	A	411	5	-	0/2/19/22	0/1/1/1
5	BGC	A	412	5	-	0/2/19/22	0/1/1/1
5	BGC	A	413	5	-	0/2/19/22	0/1/1/1
5	BGC	A	414	5	-	0/2/22/22	0/1/1/1

All (4) bond length outliers are listed below:

Mol	Chain	Res	Type	Atoms	Z	Observed(Å)	Ideal(Å)
5	A	413	BGC	C4-C5	-2.06	1.48	1.53
5	A	414	BGC	C1-C2	3.07	1.58	1.52
5	A	413	BGC	C2-C3	3.71	1.57	1.52
5	A	414	BGC	O5-C1	4.21	1.51	1.43

All (7) bond angle outliers are listed below:

Mol	Chain	Res	Type	Atoms	Z	Observed(°)	Ideal(°)
5	A	414	BGC	O5-C1-C2	-6.29	99.76	109.80
5	A	414	BGC	O1-C1-O5	-2.72	102.82	110.25
5	A	411	BGC	C1-C2-C3	-2.56	106.51	109.54
5	A	414	BGC	O2-C2-C1	-2.52	104.27	109.82
5	A	413	BGC	O3-C3-C2	-2.11	106.19	110.00
5	A	413	BGC	C1-O5-C5	2.07	114.87	112.25
5	A	413	BGC	C3-C4-C5	2.79	115.06	110.20

There are no chirality outliers.

There are no torsion outliers.

There are no ring outliers.

No monomer is involved in short contacts.

5.6 Ligand geometry [i](#)

Of 10 ligands modelled in this entry, 2 are monoatomic - leaving 8 for Mogul analysis.

In the following table, the Counts columns list the number of bonds (or angles) for which Mogul statistics could be retrieved, the number of bonds (or angles) that are observed in the model and the number of bonds (or angles) that are defined in the chemical component dictionary. The Link column lists molecule types, if any, to which the group is linked. The Z score for a bond length (or angle) is the number of standard deviations the observed value is removed from the expected value. A bond length (or angle) with $|Z| > 2$ is considered an outlier worth inspection. RMSZ is the root-mean-square of all Z scores of the bond lengths (or angles).

Mol	Type	Chain	Res	Link	Bond lengths			Bond angles		
					Counts	RMSZ	# $ Z > 2$	Counts	RMSZ	# $ Z > 2$
3	NHE	A	403	-	12,13,13	2.57	1 (8%)	15,17,17	1.50	4 (26%)
3	NHE	A	404	-	12,13,13	1.70	3 (25%)	15,17,17	2.22	6 (40%)
3	NHE	A	405	-	12,13,13	1.52	2 (16%)	15,17,17	2.16	7 (46%)
3	NHE	A	406	-	12,13,13	1.95	3 (25%)	15,17,17	6.48	12 (80%)
3	NHE	A	407	-	12,13,13	1.80	1 (8%)	15,17,17	3.99	7 (46%)
4	GOL	A	408	-	5,5,5	0.42	0	5,5,5	0.99	0
4	GOL	A	409	-	5,5,5	0.87	0	5,5,5	1.09	0
4	GOL	A	410	-	5,5,5	0.75	0	5,5,5	1.35	1 (20%)

In the following table, the Chirals column lists the number of chiral outliers, the number of chiral centers analysed, the number of these observed in the model and the number defined in the chemical component dictionary. Similar counts are reported in the Torsion and Rings columns. '-' means no outliers of that kind were identified.

Mol	Type	Chain	Res	Link	Chirals	Torsions	Rings
3	NHE	A	403	-	-	0/7/15/15	0/1/1/1
3	NHE	A	404	-	-	0/7/15/15	0/1/1/1
3	NHE	A	405	-	-	0/7/15/15	0/1/1/1
3	NHE	A	406	-	-	0/7/15/15	0/1/1/1
3	NHE	A	407	-	-	0/7/15/15	0/1/1/1
4	GOL	A	408	-	-	0/4/4/4	0/0/0/0
4	GOL	A	409	-	-	0/4/4/4	0/0/0/0
4	GOL	A	410	-	-	0/4/4/4	0/0/0/0

All (10) bond length outliers are listed below:

Mol	Chain	Res	Type	Atoms	Z	Observed(Å)	Ideal(Å)
3	A	406	NHE	O1-S	-4.79	1.30	1.45
3	A	404	NHE	O2-S	-3.43	1.34	1.45
3	A	404	NHE	O1-S	-2.86	1.36	1.45
3	A	405	NHE	O2-S	-2.22	1.38	1.45
3	A	406	NHE	C1-N	-2.07	1.42	1.47
3	A	404	NHE	O3-S	2.84	1.53	1.46
3	A	406	NHE	O3-S	3.01	1.54	1.46
3	A	405	NHE	O3-S	3.61	1.55	1.46
3	A	407	NHE	O3-S	5.32	1.60	1.46
3	A	403	NHE	O3-S	8.56	1.68	1.46

All (37) bond angle outliers are listed below:

Mol	Chain	Res	Type	Atoms	Z	Observed(°)	Ideal(°)
3	A	406	NHE	O2-S-C2	-8.49	99.66	106.91
3	A	404	NHE	O3-S-O2	-4.95	100.08	111.61
3	A	407	NHE	C5'-C6'-C1'	-3.91	105.09	111.13
3	A	405	NHE	C6'-C1'-C2'	-3.70	104.51	110.82
3	A	405	NHE	C4'-C5'-C6'	-3.57	103.95	111.44
3	A	407	NHE	O3-S-O2	-2.93	104.79	111.61
3	A	406	NHE	O3-S-O2	-2.75	105.22	111.61
3	A	403	NHE	O2-S-O1	-2.70	103.65	113.48
3	A	407	NHE	O2-S-O1	-2.66	103.77	113.48
4	A	410	GOL	C3-C2-C1	-2.66	100.69	111.12
3	A	403	NHE	C1-C2-S	-2.40	107.27	113.73
3	A	407	NHE	C3'-C2'-C1'	-2.22	107.69	111.13
3	A	404	NHE	C4'-C5'-C6'	-2.20	106.83	111.44
3	A	405	NHE	O2-S-O1	-2.17	105.58	113.48
3	A	406	NHE	C2-C1-N	-2.09	105.16	111.32
3	A	406	NHE	O2-S-O1	-2.02	106.11	113.48
3	A	404	NHE	C3'-C2'-C1'	2.06	114.31	111.13

Continued on next page...

Continued from previous page...

Mol	Chain	Res	Type	Atoms	Z	Observed(°)	Ideal(°)
3	A	405	NHE	O1-S-C2	2.31	108.88	106.91
3	A	405	NHE	O2-S-C2	2.33	108.89	106.91
3	A	404	NHE	O3-S-O1	2.39	117.18	111.61
3	A	405	NHE	C1-C2-S	2.43	120.28	113.73
3	A	403	NHE	O1-S-C2	2.43	108.98	106.91
3	A	406	NHE	C2'-C1'-N	2.67	122.20	111.10
3	A	406	NHE	C5'-C4'-C3'	2.74	120.03	111.27
3	A	403	NHE	O3-S-O2	2.81	118.16	111.61
3	A	407	NHE	C4'-C5'-C6'	2.86	117.43	111.44
3	A	405	NHE	C5'-C4'-C3'	3.11	121.23	111.27
3	A	404	NHE	C5'-C6'-C1'	3.17	116.04	111.13
3	A	406	NHE	C4'-C5'-C6'	3.58	118.94	111.44
3	A	407	NHE	O1-S-C2	3.76	110.11	106.91
3	A	406	NHE	C3'-C2'-C1'	3.91	117.18	111.13
3	A	404	NHE	O2-S-C2	4.13	110.43	106.91
3	A	406	NHE	C5'-C6'-C1'	4.29	117.77	111.13
3	A	406	NHE	C4'-C3'-C2'	4.38	120.63	111.44
3	A	406	NHE	C6'-C1'-C2'	6.15	121.30	110.82
3	A	407	NHE	O2-S-C2	13.08	118.06	106.91
3	A	406	NHE	O1-S-C2	20.52	124.42	106.91

There are no chirality outliers.

There are no torsion outliers.

There are no ring outliers.

5 monomers are involved in 18 short contacts:

Mol	Chain	Res	Type	Clashes	Symm-Clashes
3	A	406	NHE	1	0
3	A	407	NHE	11	0
4	A	408	GOL	3	0
4	A	409	GOL	1	0
4	A	410	GOL	2	0

5.7 Other polymers [i](#)

There are no such residues in this entry.

5.8 Polymer linkage issues [i](#)

There are no chain breaks in this entry.

6 Fit of model and data [i](#)

6.1 Protein, DNA and RNA chains [i](#)

In the following table, the column labelled ‘#RSRZ> 2’ contains the number (and percentage) of RSRZ outliers, followed by percent RSRZ outliers for the chain as percentile scores relative to all X-ray entries and entries of similar resolution. The OWAB column contains the minimum, median, 95th percentile and maximum values of the occupancy-weighted average B-factor per residue. The column labelled ‘Q< 0.9’ lists the number of (and percentage) of residues with an average occupancy less than 0.9.

Mol	Chain	Analysed	<RSRZ>	#RSRZ>2	OWAB(Å ²)	Q<0.9
1	A	270/319 (84%)	-0.78	3 (1%) 82 81	5, 9, 19, 48	0

All (3) RSRZ outliers are listed below:

Mol	Chain	Res	Type	RSRZ
1	A	319	SER	2.9
1	A	314	ASP	2.9
1	A	169	ASN	2.0

6.2 Non-standard residues in protein, DNA, RNA chains [i](#)

There are no non-standard protein/DNA/RNA residues in this entry.

6.3 Carbohydrates [i](#)

In the following table, the Atoms column lists the number of modelled atoms in the group and the number defined in the chemical component dictionary. LLDF column lists the quality of electron density of the group with respect to its neighbouring residues in protein, DNA or RNA chains. The B-factors column lists the minimum, median, 95th percentile and maximum values of B factors of atoms in the group. The column labelled ‘Q< 0.9’ lists the number of atoms with occupancy less than 0.9.

Mol	Type	Chain	Res	Atoms	RSCC	RSR	LLDF	B-factors(Å ²)	Q<0.9
5	BGC	A	413	11/12	0.98	0.05	0.32	6,8,12,20	0
5	BGC	A	414	12/12	0.98	0.05	0.29	6,9,14,22	12
5	BGC	A	412	11/12	0.98	0.04	-0.20	8,8,11,13	11
5	BGC	A	411	11/12	0.95	0.08	-	11,12,20,22	11

6.4 Ligands [i](#)

In the following table, the Atoms column lists the number of modelled atoms in the group and the number defined in the chemical component dictionary. LLDF column lists the quality of electron density of the group with respect to its neighbouring residues in protein, DNA or RNA chains. The B-factors column lists the minimum, median, 95th percentile and maximum values of B factors of atoms in the group. The column labelled 'Q< 0.9' lists the number of atoms with occupancy less than 0.9.

Mol	Type	Chain	Res	Atoms	RSCC	RSR	LLDF	B-factors(Å ²)	Q<0.9
4	GOL	A	410	6/6	0.85	0.20	12.62	17,22,25,27	6
3	NHE	A	407	13/13	0.78	0.20	7.47	13,15,28,30	13
4	GOL	A	408	6/6	0.97	0.11	3.08	16,38,40,47	6
4	GOL	A	409	6/6	0.95	0.10	2.93	20,38,51,56	6
3	NHE	A	406	13/13	0.97	0.10	2.84	11,16,20,27	13
3	NHE	A	403	13/13	0.93	0.09	2.04	15,17,70,85	0
3	NHE	A	405	13/13	0.95	0.10	1.35	14,16,19,26	13
3	NHE	A	404	13/13	0.98	0.06	1.30	12,14,21,27	13
2	CA	A	401	1/1	1.00	0.01	-1.52	8,8,8,8	0
2	CA	A	402	1/1	1.00	0.02	-2.25	6,6,6,6	1

6.5 Other polymers [i](#)

There are no such residues in this entry.