



Full wwPDB X-ray Structure Validation Report ⓘ

Jan 16, 2017 – 02:37 PM EST

PDB ID : 5WS1
Title : Structure of human PARP1 catalytic domain bound to a benzoimidazole inhibitor
Authors : Cao, R.; Wang, Y.L.; Zhou, J.; Huang, N.; Xu, B.L.
Deposited on : 2016-12-04
Resolution : 1.90 Å(reported)

This is a Full wwPDB X-ray Structure Validation Report for a publicly released PDB entry.

We welcome your comments at validation@mail.wwpdb.org

A user guide is available at

<http://wwpdb.org/validation/2016/XrayValidationReportHelp>

with specific help available everywhere you see the ⓘ symbol.

The following versions of software and data (see [references ⓘ](#)) were used in the production of this report:

MolProbity : 4.02b-467
Mogul : 1.7.1 (RC1), CSD as537be (2016)
Xtriage (Phenix) : 1.9-1692
EDS : rb-20028442
Percentile statistics : 20151230.v01 (using entries in the PDB archive December 30th 2015)
Refmac : 5.8.0135
CCP4 : 6.5.0
Ideal geometry (proteins) : Engh & Huber (2001)
Ideal geometry (DNA, RNA) : Parkinson et al. (1996)
Validation Pipeline (wwPDB-VP) : rb-20028442

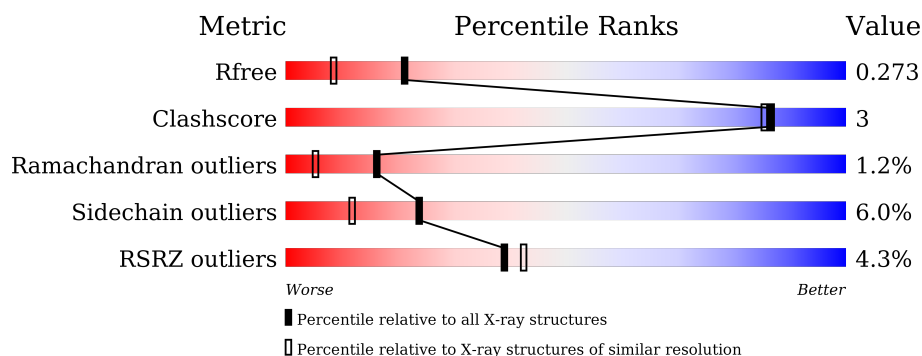
1 Overall quality at a glance i

The following experimental techniques were used to determine the structure:

X-RAY DIFFRACTION

The reported resolution of this entry is 1.90 Å.

Percentile scores (ranging between 0-100) for global validation metrics of the entry are shown in the following graphic. The table shows the number of entries on which the scores are based.



Metric	Whole archive (#Entries)	Similar resolution (#Entries, resolution range(Å))
R_{free}	91344	4755 (1.90-1.90)
Clashscore	102246	5398 (1.90-1.90)
Ramachandran outliers	100387	5338 (1.90-1.90)
Sidechain outliers	100360	5339 (1.90-1.90)
RSRZ outliers	91569	4766 (1.90-1.90)

The table below summarises the geometric issues observed across the polymeric chains and their fit to the electron density. The red, orange, yellow and green segments on the lower bar indicate the fraction of residues that contain outliers for ≥ 3 , 2, 1 and 0 types of geometric quality criteria. A grey segment represents the fraction of residues that are not modelled. The numeric value for each fraction is indicated below the corresponding segment, with a dot representing fractions $\leq 5\%$. The upper red bar (where present) indicates the fraction of residues that have poor fit to the electron density. The numeric value is given above the bar.

Mol	Chain	Length	Quality of chain
1	A	352	<div> <div>2%</div> <div> <div></div> <div>88%</div> <div>11%</div> <div>.</div> </div> </div>
1	B	352	<div> <div>6%</div> <div> <div></div> <div>86%</div> <div>11%</div> <div>..</div> </div> </div>

2 Entry composition [i](#)

There are 2 unique types of molecules in this entry. The entry contains 5586 atoms, of which 0 are hydrogens and 0 are deuteriums.

In the tables below, the ZeroOcc column contains the number of atoms modelled with zero occupancy, the AltConf column contains the number of residues with at least one atom in alternate conformation and the Trace column contains the number of residues modelled with at most 2 atoms.

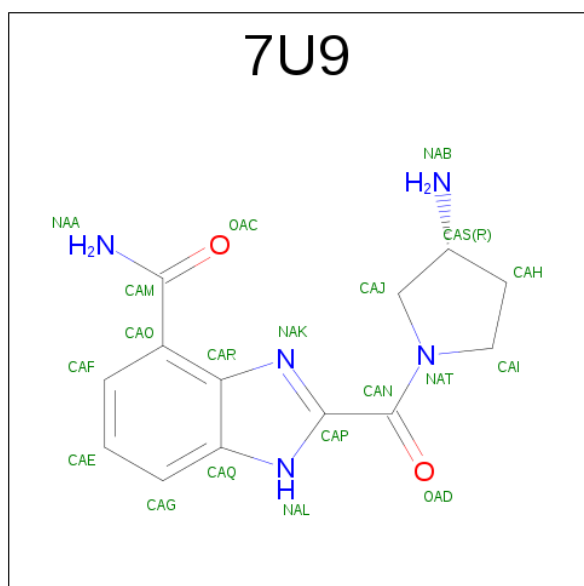
- Molecule 1 is a protein called Poly [ADP-ribose] polymerase 1.

Mol	Chain	Residues	Atoms					ZeroOcc	AltConf	Trace
1	A	351	Total	C	N	O	S	0	3	0
			2773	1763	470	527	13			
1	B	351	Total	C	N	O	S	0	3	0
			2773	1763	470	527	13			

There are 6 discrepancies between the modelled and reference sequences:

Chain	Residue	Modelled	Actual	Comment	Reference
A	660	HIS	-	expression tag	UNP P09874
A	661	MET	-	expression tag	UNP P09874
A	762	ALA	VAL	engineered mutation	UNP P09874
B	660	HIS	-	expression tag	UNP P09874
B	661	MET	-	expression tag	UNP P09874
B	762	ALA	VAL	engineered mutation	UNP P09874

- Molecule 2 is 2-[(3R)-3-azanylpyrrolidin-1-yl]carbonyl-1H-benzimidazole-4-carboxamide (three-letter code: 7U9) (formula: C₁₃H₁₅N₅O₂).

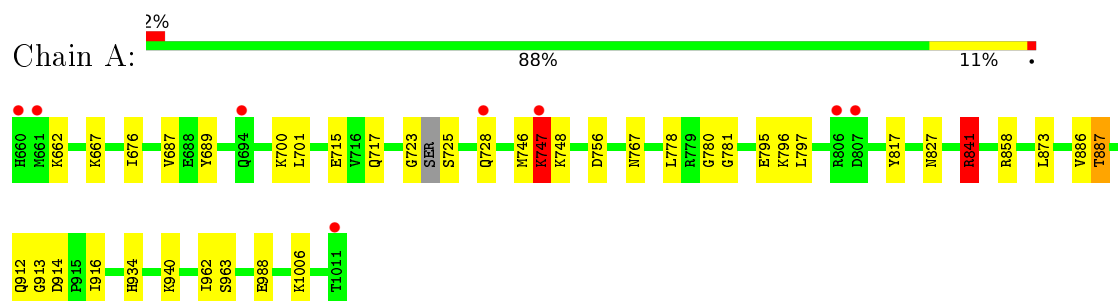


Mol	Chain	Residues	Atoms				ZeroOcc	AltConf
2	A	1	Total	C	N	O	0	0
			20	13	5	2		
2	B	1	Total	C	N	O	0	0
			20	13	5	2		

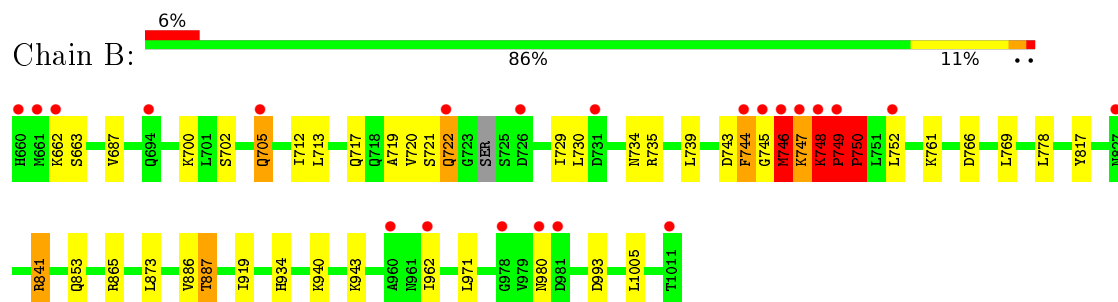
3 Residue-property plots [i](#)

These plots are drawn for all protein, RNA and DNA chains in the entry. The first graphic for a chain summarises the proportions of errors displayed in the second graphic. The second graphic shows the sequence view annotated by issues in geometry and electron density. Residues are color-coded according to the number of geometric quality criteria for which they contain at least one outlier: green = 0, yellow = 1, orange = 2 and red = 3 or more. A red dot above a residue indicates a poor fit to the electron density ($RSRZ > 2$). Stretches of 2 or more consecutive residues without any outlier are shown as a green connector. Residues present in the sample, but not in the model, are shown in grey.

- Molecule 1: Poly [ADP-ribose] polymerase 1



- Molecule 1: Poly [ADP-ribose] polymerase 1



4 Data and refinement statistics

Property	Value	Source
Space group	P 21 21 21	Depositor
Cell constants a, b, c, α , β , γ	48.71Å 91.87Å 162.23Å 90.00° 90.00° 90.00°	Depositor
Resolution (Å)	81.11 – 1.90 79.94 – 1.90	Depositor EDS
% Data completeness (in resolution range)	95.9 (81.11-1.90) 95.9 (79.94-1.90)	Depositor EDS
R_{merge}	(Not available)	Depositor
R_{sym}	(Not available)	Depositor
$\langle I/\sigma(I) \rangle$ ¹	5.13 (at 1.90Å)	Xtriage
Refinement program	REFMAC 5.8.0123	Depositor
R, R_{free}	0.233 , 0.273 0.240 , 0.273	Depositor DCC
R_{free} test set	2751 reflections (5.17%)	DCC
Wilson B-factor (Å ²)	18.1	Xtriage
Anisotropy	0.282	Xtriage
Bulk solvent k_{sol} (e/Å ³), B_{sol} (Å ²)	0.38 , 36.3	EDS
L-test for twinning ²	$\langle L \rangle = 0.49$, $\langle L^2 \rangle = 0.32$	Xtriage
Estimated twinning fraction	No twinning to report.	Xtriage
F_o, F_c correlation	0.91	EDS
Total number of atoms	5586	wwPDB-VP
Average B, all atoms (Å ²)	22.0	wwPDB-VP

Xtriage's analysis on translational NCS is as follows: *The largest off-origin peak in the Patterson function is 3.85% of the height of the origin peak. No significant pseudotranslation is detected.*

¹Intensities estimated from amplitudes.

²Theoretical values of $\langle |L| \rangle$, $\langle L^2 \rangle$ for acentric reflections are 0.5, 0.333 respectively for untwinned datasets, and 0.375, 0.2 for perfectly twinned datasets.

5 Model quality

5.1 Standard geometry

Bond lengths and bond angles in the following residue types are not validated in this section: 7U9

The Z score for a bond length (or angle) is the number of standard deviations the observed value is removed from the expected value. A bond length (or angle) with $|Z| > 5$ is considered an outlier worth inspection. RMSZ is the root-mean-square of all Z scores of the bond lengths (or angles).

Mol	Chain	Bond lengths		Bond angles	
		RMSZ	$\# Z > 5$	RMSZ	$\# Z > 5$
1	A	0.90	3/2837 (0.1%)	1.04	9/3827 (0.2%)
1	B	0.88	3/2837 (0.1%)	1.01	9/3827 (0.2%)
All	All	0.89	6/5674 (0.1%)	1.02	18/7654 (0.2%)

Chiral center outliers are detected by calculating the chiral volume of a chiral center and verifying if the center is modelled as a planar moiety or with the opposite hand. A planarity outlier is detected by checking planarity of atoms in a peptide group, atoms in a mainchain group or atoms of a sidechain that are expected to be planar.

Mol	Chain	#Chirality outliers	#Planarity outliers
1	A	0	3
1	B	0	1
All	All	0	4

All (6) bond length outliers are listed below:

Mol	Chain	Res	Type	Atoms	Z	Observed(Å)	Ideal(Å)
1	A	781	GLY	N-CA	8.55	1.58	1.46
1	A	988	GLU	CB-CG	-7.22	1.38	1.52
1	B	748	LYS	CB-CG	6.89	1.71	1.52
1	B	748	LYS	CA-CB	5.65	1.66	1.53
1	A	841	ARG	CD-NE	-5.56	1.36	1.46
1	B	748	LYS	N-CA	5.30	1.56	1.46

All (18) bond angle outliers are listed below:

Mol	Chain	Res	Type	Atoms	Z	Observed(°)	Ideal(°)
1	B	841	ARG	NE-CZ-NH2	-14.12	113.24	120.30
1	A	841	ARG	NE-CZ-NH2	-13.90	113.35	120.30
1	A	841	ARG	NE-CZ-NH1	13.73	127.16	120.30

Continued on next page...

Continued from previous page...

Mol	Chain	Res	Type	Atoms	Z	Observed(°)	Ideal(°)
1	B	841	ARG	NE-CZ-NH1	11.39	126.00	120.30
1	B	748	LYS	CB-CG-CD	7.42	130.90	111.60
1	A	796	LYS	CD-CE-NZ	-7.41	94.67	111.70
1	B	748	LYS	CA-CB-CG	7.06	128.92	113.40
1	A	747	LYS	N-CA-C	6.88	129.59	111.00
1	A	780	GLY	C-N-CA	-6.70	108.23	122.30
1	B	746	MET	CG-SD-CE	6.32	110.31	100.20
1	B	993	ASP	CB-CG-OD1	6.21	123.89	118.30
1	A	841	ARG	CD-NE-CZ	6.08	132.11	123.60
1	B	993	ASP	CB-CG-OD2	-5.97	112.92	118.30
1	A	781	GLY	N-CA-C	5.70	127.34	113.10
1	A	780	GLY	O-C-N	-5.49	113.86	123.20
1	A	988	GLU	OE1-CD-OE2	5.49	129.89	123.30
1	B	744	PHE	N-CA-C	-5.31	96.67	111.00
1	B	750	PRO	CA-N-CD	-5.17	104.27	111.50

There are no chirality outliers.

All (4) planarity outliers are listed below:

Mol	Chain	Res	Type	Group
1	A	746	MET	Peptide
1	A	747	LYS	Peptide
1	A	841	ARG	Sidechain
1	B	746	MET	Peptide

5.2 Too-close contacts ⓘ

In the following table, the Non-H and H(model) columns list the number of non-hydrogen atoms and hydrogen atoms in the chain respectively. The H(added) column lists the number of hydrogen atoms added and optimized by MolProbity. The Clashes column lists the number of clashes within the asymmetric unit, whereas Symm-Clashes lists symmetry related clashes.

Mol	Chain	Non-H	H(model)	H(added)	Clashes	Symm-Clashes
1	A	2773	0	2806	10	12
1	B	2773	0	2806	22	11
2	A	20	0	0	0	0
2	B	20	0	0	1	0
All	All	5586	0	5612	30	12

The all-atom clashscore is defined as the number of clashes found per 1000 atoms (including hydrogen atoms). The all-atom clashscore for this structure is 3.

All (30) close contacts within the same asymmetric unit are listed below, sorted by their clash magnitude.

Atom-1	Atom-2	Interatomic distance (Å)	Clash overlap (Å)
1:B:749:PRO:HB2	1:B:750:PRO:HD2	1.52	0.91
1:A:886:VAL:HG11	1:B:934:HIS:CD2	2.10	0.85
1:B:841:ARG:HD2	1:B:873:LEU:O	1.80	0.81
1:A:841:ARG:HD2	1:A:873:LEU:O	1.81	0.81
1:B:743:ASP:HA	1:B:745:GLY:O	1.88	0.73
1:B:746:MET:O	1:B:747:LYS:HG2	1.90	0.71
1:B:717:GLN:OE1	1:B:887:THR:HB	1.92	0.70
1:B:744:PHE:CE2	1:B:749:PRO:HG3	2.30	0.66
1:A:841:ARG:CD	1:A:873:LEU:O	2.44	0.66
1:B:841:ARG:CD	1:B:873:LEU:O	2.46	0.64
1:B:749:PRO:HB2	1:B:750:PRO:CD	2.26	0.62
1:B:766:ASP:OD2	2:B:1101:7U9:NAB	2.33	0.61
1:A:689:TYR:OH	1:A:767:ASN:ND2	2.36	0.59
1:B:752:LEU:HD21	1:B:761:LYS:HE3	1.87	0.57
1:A:723:GLY:O	1:A:725:SER:N	2.40	0.55
1:B:747:LYS:O	1:B:748:LYS:HB2	2.10	0.51
1:B:744:PHE:CE2	1:B:749:PRO:CG	2.94	0.51
1:B:919:ILE:HG21	1:B:1005:LEU:HD11	1.93	0.50
1:A:717:GLN:OE1	1:A:887:THR:HB	2.14	0.47
1:A:934:HIS:CD2	1:B:886:VAL:HG11	2.51	0.45
1:B:744:PHE:CD2	1:B:749:PRO:HG3	2.51	0.45
1:B:719:ALA:HB3	1:B:729:ILE:HD11	1.99	0.45
1:A:676:ILE:HD11	1:A:797:LEU:HD11	1.98	0.45
1:B:744:PHE:CD2	1:B:749:PRO:CB	3.00	0.45
1:A:916:ILE:HD11	1:A:1006:LYS:HD2	2.00	0.44
1:B:712:ILE:HD11	1:B:735:ARG:HD2	2.01	0.43
1:B:705:GLN:OE1	1:B:705:GLN:CA	2.66	0.42
1:A:916:ILE:CD1	1:A:1006:LYS:HD2	2.49	0.42
1:B:705:GLN:OE1	1:B:705:GLN:HA	2.21	0.41
1:B:720:VAL:O	1:B:722:GLN:N	2.54	0.40

All (12) symmetry-related close contacts are listed below. The label for Atom-2 includes the symmetry operator and encoded unit-cell translations to be applied.

Atom-1	Atom-2	Interatomic distance (Å)	Clash overlap (Å)
1:A:914:ASP:N	1:B:748:LYS:CB[4_445]	1.27	0.93
1:A:914:ASP:N	1:B:748:LYS:CG[4_445]	1.32	0.88
1:A:913:GLY:C	1:B:748:LYS:CG[4_445]	1.82	0.38
1:A:912:GLN:O	1:B:748:LYS:N[4_445]	1.89	0.31

Continued on next page...

Continued from previous page...

Atom-1	Atom-2	Interatomic distance (Å)	Clash overlap (Å)
1:A:913:GLY:C	1:B:748:LYS:CB[4_445]	1.89	0.31
1:A:914:ASP:N	1:B:748:LYS:CD[4_445]	1.97	0.23
1:A:747:LYS:O	1:A:827:ASN:OD1[4_445]	1.99	0.21
1:A:913:GLY:N	1:B:748:LYS:CG[4_445]	2.00	0.20
1:A:912:GLN:O	1:B:747:LYS:C[4_445]	2.00	0.20
1:A:913:GLY:CA	1:B:748:LYS:CG[4_445]	2.08	0.12
1:A:912:GLN:O	1:B:748:LYS:CA[4_445]	2.10	0.10
1:A:715:GLU:OE1	1:B:705:GLN:NE2[1_455]	2.10	0.10

5.3 Torsion angles ⓘ

5.3.1 Protein backbone ⓘ

In the following table, the Percentiles column shows the percent Ramachandran outliers of the chain as a percentile score with respect to all X-ray entries followed by that with respect to entries of similar resolution.

The Analysed column shows the number of residues for which the backbone conformation was analysed, and the total number of residues.

Mol	Chain	Analysed	Favoured	Allowed	Outliers	Percentiles	
1	A	350/352 (99%)	344 (98%)	4 (1%)	2 (1%)	30	17
1	B	350/352 (99%)	339 (97%)	5 (1%)	6 (2%)	11	2
All	All	700/704 (99%)	683 (98%)	9 (1%)	8 (1%)	16	6

All (8) Ramachandran outliers are listed below:

Mol	Chain	Res	Type
1	B	748	LYS
1	B	749	PRO
1	B	663	SER
1	B	721	SER
1	A	662	LYS
1	A	748	LYS
1	B	747	LYS
1	B	750	PRO

5.3.2 Protein sidechains ⓘ

In the following table, the Percentiles column shows the percent sidechain outliers of the chain as a percentile score with respect to all X-ray entries followed by that with respect to entries of similar resolution.

The Analysed column shows the number of residues for which the sidechain conformation was analysed, and the total number of residues.

Mol	Chain	Analysed	Rotameric	Outliers	Percentiles	
1	A	311/309 (101%)	297 (96%)	14 (4%)	34	21
1	B	311/309 (101%)	288 (93%)	23 (7%)	17	7
All	All	622/618 (101%)	585 (94%)	37 (6%)	24	12

All (37) residues with a non-rotameric sidechain are listed below:

Mol	Chain	Res	Type
1	A	667	LYS
1	A	687	VAL
1	A	700	LYS
1	A	701	LEU
1	A	728	GLN
1	A	756	ASP
1	A	778	LEU
1	A	795	GLU
1	A	817	TYR
1	A	858	ARG
1	A	887	THR
1	A	940	LYS
1	A	962	ILE
1	A	963	SER
1	B	662	LYS
1	B	687	VAL
1	B	700	LYS
1	B	702	SER
1	B	705	GLN
1	B	713	LEU
1	B	722	GLN
1	B	730	LEU
1	B	734	ASN
1	B	739	LEU
1	B	748	LYS
1	B	749	PRO
1	B	769	LEU

Continued on next page...

Continued from previous page...

Mol	Chain	Res	Type
1	B	778	LEU
1	B	817	TYR
1	B	853	GLN
1	B	865	ARG
1	B	887	THR
1	B	940	LYS
1	B	943	LYS
1	B	962	ILE
1	B	971	LEU
1	B	980	ASN

Some sidechains can be flipped to improve hydrogen bonding and reduce clashes. All (8) such sidechains are listed below:

Mol	Chain	Res	Type
1	A	718	GLN
1	A	728	GLN
1	A	767	ASN
1	A	961	ASN
1	A	998	ASN
1	B	759	GLN
1	B	868	ASN
1	B	980	ASN

5.3.3 RNA ⓘ

There are no RNA molecules in this entry.

5.4 Non-standard residues in protein, DNA, RNA chains ⓘ

There are no non-standard protein/DNA/RNA residues in this entry.

5.5 Carbohydrates ⓘ

There are no carbohydrates in this entry.

5.6 Ligand geometry ⓘ

2 ligands are modelled in this entry.

In the following table, the Counts columns list the number of bonds (or angles) for which Mogul statistics could be retrieved, the number of bonds (or angles) that are observed in the model and the number of bonds (or angles) that are defined in the chemical component dictionary. The Link column lists molecule types, if any, to which the group is linked. The Z score for a bond length (or angle) is the number of standard deviations the observed value is removed from the expected value. A bond length (or angle) with $|Z| > 2$ is considered an outlier worth inspection. RMSZ is the root-mean-square of all Z scores of the bond lengths (or angles).

Mol	Type	Chain	Res	Link	Bond lengths			Bond angles		
					Counts	RMSZ	$\# Z > 2$	Counts	RMSZ	$\# Z > 2$
2	7U9	A	1101	-	19,22,22	6.48	8 (42%)	20,32,32	2.71	11 (55%)
2	7U9	B	1101	-	19,22,22	5.85	8 (42%)	20,32,32	2.92	8 (40%)

In the following table, the Chirals column lists the number of chiral outliers, the number of chiral centers analysed, the number of these observed in the model and the number defined in the chemical component dictionary. Similar counts are reported in the Torsion and Rings columns. '-' means no outliers of that kind were identified.

Mol	Type	Chain	Res	Link	Chirals	Torsions	Rings
2	7U9	A	1101	-	-	0/8/21/21	0/3/3/3
2	7U9	B	1101	-	-	0/8/21/21	0/3/3/3

All (16) bond length outliers are listed below:

Mol	Chain	Res	Type	Atoms	Z	Observed(Å)	Ideal(Å)
2	A	1101	7U9	CAP-CAN	-26.12	1.37	1.53
2	B	1101	7U9	CAP-CAN	-23.39	1.39	1.53
2	A	1101	7U9	CAG-CAQ	-5.60	1.31	1.41
2	B	1101	7U9	CAO-CAR	-4.24	1.36	1.43
2	A	1101	7U9	CAO-CAM	-3.89	1.44	1.50
2	B	1101	7U9	CAO-CAM	-3.21	1.45	1.50
2	A	1101	7U9	CAO-CAR	-3.04	1.38	1.43
2	B	1101	7U9	CAG-CAQ	-2.93	1.36	1.41
2	B	1101	7U9	CAH-CAS	-2.49	1.49	1.53
2	A	1101	7U9	CAR-CAQ	-2.05	1.36	1.42
2	A	1101	7U9	CAH-CAS	-2.03	1.49	1.53
2	B	1101	7U9	CAI-NAT	2.43	1.52	1.47
2	B	1101	7U9	CAJ-CAS	3.36	1.57	1.52
2	A	1101	7U9	CAJ-NAT	3.38	1.54	1.46
2	A	1101	7U9	CAI-NAT	5.08	1.59	1.47
2	B	1101	7U9	CAJ-NAT	5.38	1.58	1.46

All (19) bond angle outliers are listed below:

Mol	Chain	Res	Type	Atoms	Z	Observed(°)	Ideal(°)
2	B	1101	7U9	CAI-CAH-CAS	-7.33	88.99	103.82
2	A	1101	7U9	CAI-CAH-CAS	-5.48	92.73	103.82
2	A	1101	7U9	OAC-CAM-NAA	-4.95	115.52	122.58
2	B	1101	7U9	OAC-CAM-NAA	-4.19	116.61	122.58
2	B	1101	7U9	CAI-NAT-CAJ	-3.44	102.68	111.54
2	A	1101	7U9	CAG-CAE-CAF	-3.29	115.63	120.98
2	B	1101	7U9	OAD-CAN-NAT	-3.02	117.56	122.40
2	A	1101	7U9	CAI-NAT-CAJ	-2.97	103.88	111.54
2	A	1101	7U9	CAH-CAI-NAT	-2.87	99.74	103.30
2	A	1101	7U9	OAD-CAN-NAT	-2.21	118.86	122.40
2	A	1101	7U9	CAF-CAO-CAR	-2.13	116.00	118.58
2	A	1101	7U9	CAP-CAN-NAT	2.39	125.73	119.80
2	A	1101	7U9	CAO-CAM-NAA	2.45	121.67	118.09
2	B	1101	7U9	CAO-CAM-NAA	2.83	122.21	118.09
2	B	1101	7U9	CAP-NAL-CAQ	2.98	109.69	103.78
2	A	1101	7U9	CAP-NAK-CAR	3.88	110.19	103.38
2	A	1101	7U9	CAI-NAT-CAN	4.10	139.12	123.42
2	B	1101	7U9	CAH-CAI-NAT	4.33	108.67	103.30
2	B	1101	7U9	CAP-NAK-CAR	5.57	113.16	103.38

There are no chirality outliers.

There are no torsion outliers.

There are no ring outliers.

1 monomer is involved in 1 short contact:

Mol	Chain	Res	Type	Clashes	Symm-Clashes
2	B	1101	7U9	1	0

5.7 Other polymers [i](#)

There are no such residues in this entry.

5.8 Polymer linkage issues [i](#)

There are no chain breaks in this entry.

6 Fit of model and data

6.1 Protein, DNA and RNA chains

In the following table, the column labelled ‘#RSRZ> 2’ contains the number (and percentage) of RSRZ outliers, followed by percent RSRZ outliers for the chain as percentile scores relative to all X-ray entries and entries of similar resolution. The OWAB column contains the minimum, median, 95th percentile and maximum values of the occupancy-weighted average B-factor per residue. The column labelled ‘Q< 0.9’ lists the number of (and percentage) of residues with an average occupancy less than 0.9.

Mol	Chain	Analysed	<RSRZ>	#RSRZ>2	OWAB(Å ²)	Q<0.9
1	A	351/352 (99%)	0.22	8 (2%) 64 67	7, 18, 39, 76	0
1	B	351/352 (99%)	0.63	22 (6%) 23 26	9, 21, 44, 146	0
All	All	702/704 (99%)	0.42	30 (4%) 39 42	7, 19, 41, 146	0

All (30) RSRZ outliers are listed below:

Mol	Chain	Res	Type	RSRZ
1	B	746	MET	21.6
1	B	745	GLY	21.2
1	B	747	LYS	15.2
1	B	748	LYS	12.2
1	A	661	MET	9.8
1	B	661	MET	7.6
1	B	1011	THR	7.2
1	B	749	PRO	6.7
1	A	660	HIS	5.7
1	B	660	HIS	5.3
1	A	1011	THR	4.2
1	B	962	ILE	3.9
1	A	747	LYS	3.4
1	B	726	ASP	3.2
1	B	978	GLY	2.9
1	A	728	GLN	2.9
1	A	806	ARG	2.9
1	B	980	ASN	2.8
1	B	744	PHE	2.8
1	B	981	ASP	2.7
1	B	662	LYS	2.6
1	A	807	ASP	2.4
1	B	752	LEU	2.3
1	B	705	GLN	2.3

Continued on next page...

Continued from previous page...

Mol	Chain	Res	Type	RSRZ
1	B	960	ALA	2.3
1	B	731	ASP	2.3
1	B	694	GLN	2.2
1	B	827	ASN	2.2
1	A	694	GLN	2.1
1	B	722	GLN	2.1

6.2 Non-standard residues in protein, DNA, RNA chains [i](#)

There are no non-standard protein/DNA/RNA residues in this entry.

6.3 Carbohydrates [i](#)

There are no carbohydrates in this entry.

6.4 Ligands [i](#)

In the following table, the Atoms column lists the number of modelled atoms in the group and the number defined in the chemical component dictionary. LLDF column lists the quality of electron density of the group with respect to its neighbouring residues in protein, DNA or RNA chains. The B-factors column lists the minimum, median, 95th percentile and maximum values of B factors of atoms in the group. The column labelled 'Q< 0.9' lists the number of atoms with occupancy less than 0.9.

Mol	Type	Chain	Res	Atoms	RSCC	RSR	LLDF	B-factors(\AA^2)	Q<0.9
2	7U9	A	1101	20/20	0.92	0.15	1.89	9,13,43,52	0
2	7U9	B	1101	20/20	0.95	0.11	0.11	9,14,29,31	0

6.5 Other polymers [i](#)

There are no such residues in this entry.