



wwPDB X-ray Structure Validation Summary Report ⓘ

Feb 19, 2016 – 07:54 PM GMT

PDB ID : 4WU9
Title : Structure of cisPtNAP-NCP145
Authors : Chua, E.Y.D.; Davey, G.E.; Chin, C.F.; Droge, P.; Ang, W.H.; Davey, C.A.
Deposited on : 2014-10-31
Resolution : 2.60 Å(reported)

This is a wwPDB X-ray Structure Validation Summary Report for a publicly released PDB entry.
We welcome your comments at validation@mail.wwpdb.org
A user guide is available at
<http://wwpdb.org/validation/2016/XrayValidationReportHelp>
with specific help available everywhere you see the ⓘ symbol.

The following versions of software and data (see [references ⓘ](#)) were used in the production of this report:

MolProbity : 4.02b-467
Mogul : 1.7.1 (RC1), CSD as537be (2016)
Xtriage (Phenix) : 1.9-1692
EDS : rb-20026982
Percentile statistics : 20151230.v01 (using entries in the PDB archive December 30th 2015)
Refmac : 5.8.0135
CCP4 : 6.5.0
Ideal geometry (proteins) : Engh & Huber (2001)
Ideal geometry (DNA, RNA) : Parkinson et al. (1996)
Validation Pipeline (wwPDB-VP) : rb-20026982

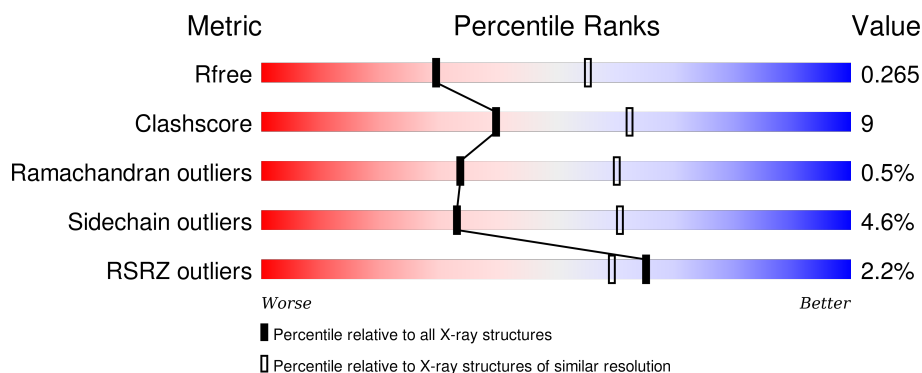
1 Overall quality at a glance ⓘ

The following experimental techniques were used to determine the structure:

X-RAY DIFFRACTION

The reported resolution of this entry is 2.60 Å.

Percentile scores (ranging between 0-100) for global validation metrics of the entry are shown in the following graphic. The table shows the number of entries on which the scores are based.



Metric	Whole archive (#Entries)	Similar resolution (#Entries, resolution range(Å))
R_{free}	91344	2328 (2.60-2.60)
Clashscore	102246	2679 (2.60-2.60)
Ramachandran outliers	100387	2635 (2.60-2.60)
Sidechain outliers	100360	2635 (2.60-2.60)
RSRZ outliers	91569	2334 (2.60-2.60)

The table below summarises the geometric issues observed across the polymeric chains and their fit to the electron density. The red, orange, yellow and green segments on the lower bar indicate the fraction of residues that contain outliers for ≥ 3 , 2, 1 and 0 types of geometric quality criteria. A grey segment represents the fraction of residues that are not modelled. The numeric value for each fraction is indicated below the corresponding segment, with a dot representing fractions $\leq 5\%$. The upper red bar (where present) indicates the fraction of residues that have poor fit to the electron density. The numeric value is given above the bar.

Mol	Chain	Length	Quality of chain
1	A	135	<div> <div>2%</div> <div>57%</div> <div>14%</div> <div>29%</div> </div>
1	E	135	<div> <div>2%</div> <div>61%</div> <div>9%</div> <div>29%</div> </div>
2	B	102	<div> <div>2%</div> <div>63%</div> <div>18%</div> <div>20%</div> </div>
2	F	102	<div> <div>%</div> <div>70%</div> <div>16%</div> <div>15%</div> </div>
3	C	129	<div> <div>2%</div> <div>64%</div> <div>16%</div> <div>18%</div> </div>

Continued on next page...

Continued from previous page...

Mol	Chain	Length	Quality of chain
3	G	129	<div> <div>2%</div> <div>70%</div> <div>12%</div> <div>18%</div> </div>
4	D	125	<div> <div>%</div> <div>64%</div> <div>11%</div> <div>24%</div> </div>
4	H	125	<div> <div>%</div> <div>66%</div> <div>10%</div> <div>24%</div> </div>
5	I	145	<div> <div>3%</div> <div>40%</div> <div>46%</div> <div>14%</div> </div>
6	J	145	<div> <div>2%</div> <div>48%</div> <div>38%</div> <div>14%</div> </div>

2 Entry composition

There are 10 unique types of molecules in this entry. The entry contains 12110 atoms, of which 0 are hydrogens and 0 are deuteriums.

In the tables below, the ZeroOcc column contains the number of atoms modelled with zero occupancy, the AltConf column contains the number of residues with at least one atom in alternate conformation and the Trace column contains the number of residues modelled with at most 2 atoms.

- Molecule 1 is a protein called Histone H3.2.

Mol	Chain	Residues	Atoms					ZeroOcc	AltConf	Trace
1	A	96	Total	C	N	O	S	0	0	0
			791	500	151	137	3			
1	E	96	Total	C	N	O	S	0	0	0
			791	500	151	137	3			

There are 2 discrepancies between the modelled and reference sequences:

Chain	Residue	Modelled	Actual	Comment	Reference
A	102	ALA	GLY	engineered mutation	UNP P84233
E	102	ALA	GLY	engineered mutation	UNP P84233

- Molecule 2 is a protein called Histone H4.

Mol	Chain	Residues	Atoms					ZeroOcc	AltConf	Trace
2	B	82	Total	C	N	O	S	0	0	0
			653	412	127	113	1			
2	F	87	Total	C	N	O	S	0	0	0
			703	442	142	118	1			

- Molecule 3 is a protein called Histone H2A type 1.

Mol	Chain	Residues	Atoms				ZeroOcc	AltConf	Trace
3	C	106	Total	C	N	O	0	0	0
			818	516	160	142			
3	G	106	Total	C	N	O	0	0	0
			818	516	160	142			

There are 4 discrepancies between the modelled and reference sequences:

Chain	Residue	Modelled	Actual	Comment	Reference
C	99	ARG	GLY	engineered mutation	UNP P06897
C	123	SER	ALA	engineered mutation	UNP P06897

Continued on next page...

Continued from previous page...

Chain	Residue	Modelled	Actual	Comment	Reference
G	99	ARG	GLY	engineered mutation	UNP P06897
G	123	SER	ALA	engineered mutation	UNP P06897

- Molecule 4 is a protein called Histone H2B 1.1.

Mol	Chain	Residues	Atoms					ZeroOcc	AltConf	Trace
4	D	95	Total	C	N	O	S	0	0	0
			745	469	134	140	2			
4	H	95	Total	C	N	O	S	0	0	0
			745	469	134	140	2			

There are 2 discrepancies between the modelled and reference sequences:

Chain	Residue	Modelled	Actual	Comment	Reference
D	29	THR	SER	engineered mutation	UNP P02281
H	29	THR	SER	engineered mutation	UNP P02281

- Molecule 5 is a DNA chain called DNA (145-MER).

Mol	Chain	Residues	Atoms					ZeroOcc	AltConf	Trace
5	I	145	Total	C	N	O	P	0	0	0
			2970	1421	538	867	144			

- Molecule 6 is a DNA chain called DNA (145-MER).

Mol	Chain	Residues	Atoms					ZeroOcc	AltConf	Trace
6	J	145	Total	C	N	O	P	0	0	0
			2969	1421	535	869	144			

- Molecule 7 is SULFATE ION (three-letter code: SO4) (formula: O₄S).

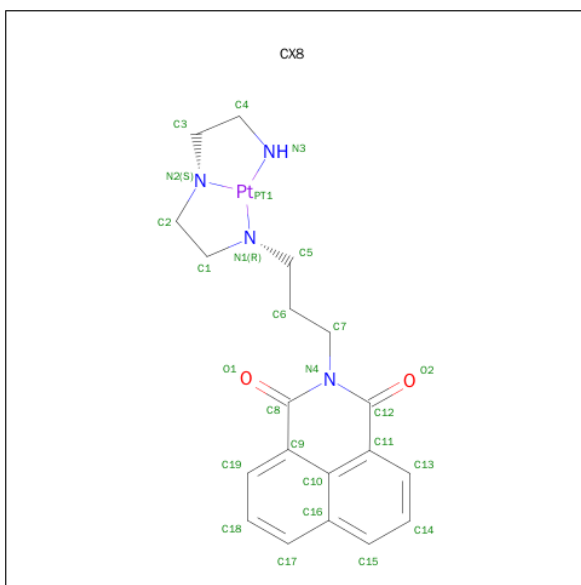


Mol	Chain	Residues	Atoms			ZeroOcc	AltConf
7	C	1	Total	O	S	0	0
			5	4	1		
7	H	1	Total	O	S	0	0
			5	4	1		

- Molecule 8 is MAGNESIUM ION (three-letter code: MG) (formula: Mg).

Mol	Chain	Residues	Atoms		ZeroOcc	AltConf
8	E	1	Total	Mg	0	0
			1	1		

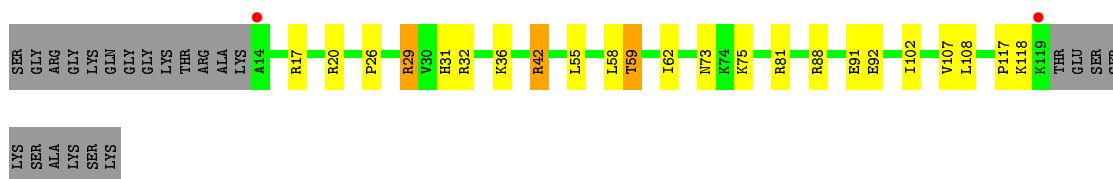
- Molecule 9 is [2-{3-[(2-{[2-(amino-kappaN)ethyl]amino-kappaN}ethyl)amino-kappaN]propyl}-1H-benzo[de]isoquinoline-1,3(2H)-dionato(3-)]platinum (three-letter code: CX8) (formula: C₁₉H₂₁N₄O₂Pt).



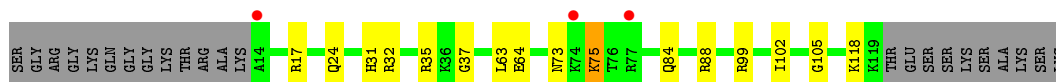
Mol	Chain	Residues	Atoms					ZeroOcc	AltConf
9	I	1	Total	C	N	O	Pt	0	0
			26	19	4	2	1		
9	I	1	Total	C	N	O	Pt	0	0
			26	19	4	2	1		
9	J	1	Total	C	N	O	Pt	0	0
			26	19	4	2	1		

- Molecule 10 is water.

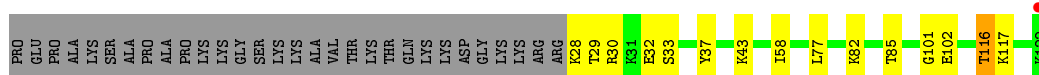
Mol	Chain	Residues	Atoms		ZeroOcc	AltConf
10	A	2	Total	O	0	0
			2	2		
10	C	5	Total	O	0	0
			5	5		
10	D	1	Total	O	0	0
			1	1		
10	E	4	Total	O	0	0
			4	4		
10	F	4	Total	O	0	0
			4	4		
10	G	1	Total	O	0	0
			1	1		
10	H	1	Total	O	0	0
			1	1		



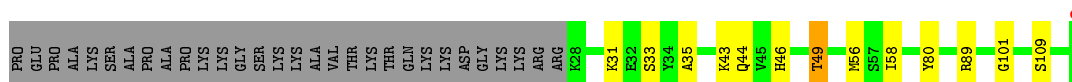
- Molecule 3: Histone H2A type 1



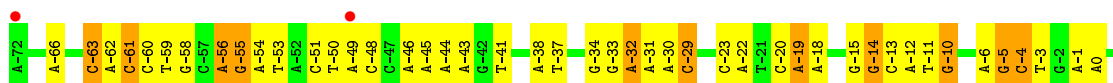
- Molecule 4: Histone H2B 1.1



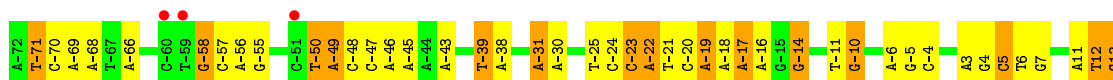
- Molecule 4: Histone H2B 1.1



- Molecule 5: DNA (145-MER)



- Molecule 6: DNA (145-MER)



4 Data and refinement statistics

Property	Value	Source
Space group	P 21 21 21	Depositor
Cell constants a, b, c, α , β , γ	106.57Å 109.33Å 181.28Å 90.00° 90.00° 90.00°	Depositor
Resolution (Å)	70.33 – 2.60 58.38 – 2.60	Depositor EDS
% Data completeness (in resolution range)	88.6 (70.33-2.60) 88.6 (58.38-2.60)	Depositor EDS
R_{merge}	(Not available)	Depositor
R_{sym}	(Not available)	Depositor
$\langle I/\sigma(I) \rangle$ ¹	1.77 (at 2.61Å)	Xtriage
Refinement program	REFMAC 5.6.0117	Depositor
R, R_{free}	0.216 , 0.273 0.215 , 0.265	Depositor DCC
R_{free} test set	1174 reflections (2.05%)	DCC
Wilson B-factor (Å ²)	74.1	Xtriage
Anisotropy	0.064	Xtriage
Bulk solvent k_{sol} (e/Å ³), B_{sol} (Å ²)	0.27 , 50.9	EDS
Estimated twinning fraction	0.022 for k,h,l	Xtriage
L-test for twinning ²	$\langle L \rangle = 0.48$, $\langle L^2 \rangle = 0.31$	Xtriage
Outliers	0 of 58329 reflections	Xtriage
F_o, F_c correlation	0.94	EDS
Total number of atoms	12110	wwPDB-VP
Average B, all atoms (Å ²)	102.0	wwPDB-VP

Xtriage's analysis on translational NCS is as follows: *The largest off-origin peak in the Patterson function is 2.88% of the height of the origin peak. No significant pseudotranslation is detected.*

¹Intensities estimated from amplitudes.

²Theoretical values of $\langle |L| \rangle$, $\langle L^2 \rangle$ for acentric reflections are 0.5, 0.375 respectively for untwinned datasets, and 0.333, 0.2 for perfectly twinned datasets.

5 Model quality [i](#)

5.1 Standard geometry [i](#)

Bond lengths and bond angles in the following residue types are not validated in this section: CX8, MG, SO4

The Z score for a bond length (or angle) is the number of standard deviations the observed value is removed from the expected value. A bond length (or angle) with $|Z| > 5$ is considered an outlier worth inspection. RMSZ is the root-mean-square of all Z scores of the bond lengths (or angles).

Mol	Chain	Bond lengths		Bond angles	
		RMSZ	# $ Z > 5$	RMSZ	# $ Z > 5$
1	A	0.48	0/803	0.63	0/1078
1	E	0.56	0/803	0.70	0/1078
2	B	0.45	0/660	0.67	0/883
2	F	0.60	0/711	0.82	0/948
3	C	0.54	0/828	0.76	0/1117
3	G	0.46	0/828	0.62	0/1117
4	D	0.57	0/756	0.69	0/1015
4	H	0.49	0/756	0.64	0/1015
5	I	0.53	6/3332 (0.2%)	1.15	44/5141 (0.9%)
6	J	0.53	6/3330 (0.2%)	1.14	40/5138 (0.8%)
All	All	0.52	12/12807 (0.1%)	0.97	84/18530 (0.5%)

The worst 5 of 12 bond length outliers are listed below:

Mol	Chain	Res	Type	Atoms	Z	Observed(Å)	Ideal(Å)
5	I	-14	DG	P-O5'	13.59	1.73	1.59
6	J	-14	DG	P-O5'	13.42	1.73	1.59
6	J	-14	DG	C5-C4	12.69	1.47	1.38
5	I	-14	DG	C5-C4	12.42	1.47	1.38
5	I	-14	DG	N7-C5	-11.46	1.32	1.39

The worst 5 of 84 bond angle outliers are listed below:

Mol	Chain	Res	Type	Atoms	Z	Observed(°)	Ideal(°)
5	I	-14	DG	N3-C4-C5	-22.97	117.11	128.60
6	J	-14	DG	N3-C4-C5	-21.91	117.65	128.60
5	I	-14	DG	N3-C4-N9	17.16	136.30	126.00
5	I	-14	DG	C2-N3-C4	17.11	120.45	111.90
6	J	-14	DG	C2-N3-C4	16.78	120.29	111.90

There are no chirality outliers.

There are no planarity outliers.

5.2 Too-close contacts

In the following table, the Non-H and H(model) columns list the number of non-hydrogen atoms and hydrogen atoms in the chain respectively. The H(added) column lists the number of hydrogen atoms added and optimized by MolProbity. The Clashes column lists the number of clashes within the asymmetric unit, whereas Symm-Clashes lists symmetry related clashes.

Mol	Chain	Non-H	H(model)	H(added)	Clashes	Symm-Clashes
1	A	791	0	828	18	0
1	E	791	0	828	10	0
2	B	653	0	696	16	0
2	F	703	0	755	10	0
3	C	818	0	877	18	0
3	G	818	0	877	11	0
4	D	745	0	773	8	0
4	H	745	0	773	11	0
5	I	2970	0	1640	62	0
6	J	2969	0	1641	63	0
7	C	5	0	0	0	0
7	H	5	0	0	0	0
8	E	1	0	0	0	0
9	I	52	0	40	2	0
9	J	26	0	20	3	0
10	A	2	0	0	1	0
10	C	5	0	0	1	0
10	D	1	0	0	0	0
10	E	4	0	0	0	0
10	F	4	0	0	0	0
10	G	1	0	0	0	0
10	H	1	0	0	0	0
All	All	12110	0	9748	189	0

The all-atom clashscore is defined as the number of clashes found per 1000 atoms (including hydrogen atoms). The all-atom clashscore for this structure is 9.

The worst 5 of 189 close contacts within the same asymmetric unit are listed below, sorted by their clash magnitude.

Atom-1	Atom-2	Interatomic distance (Å)	Clash overlap (Å)
3:G:17:ARG:HH12	3:G:31:HIS:HD2	1.25	0.85
9:J:100:CX8:H11	9:J:100:CX8:O1	1.74	0.85

Continued on next page...

Continued from previous page...

Atom-1	Atom-2	Interatomic distance (Å)	Clash overlap (Å)
1:E:49:ARG:HG3	1:E:49:ARG:HH11	1.44	0.81
2:B:23:ARG:HH11	2:B:23:ARG:HG2	1.43	0.81
5:I:-44:DA:H2'	5:I:-43:DA:C8	2.18	0.79

There are no symmetry-related clashes.

5.3 Torsion angles [i](#)

5.3.1 Protein backbone [i](#)

In the following table, the Percentiles column shows the percent Ramachandran outliers of the chain as a percentile score with respect to all X-ray entries followed by that with respect to entries of similar resolution.

The Analysed column shows the number of residues for which the backbone conformation was analysed, and the total number of residues.

Mol	Chain	Analysed	Favoured	Allowed	Outliers	Percentiles	
1	A	94/135 (70%)	92 (98%)	1 (1%)	1 (1%)	17	36
1	E	94/135 (70%)	90 (96%)	4 (4%)	0	100	100
2	B	80/102 (78%)	74 (92%)	6 (8%)	0	100	100
2	F	85/102 (83%)	82 (96%)	3 (4%)	0	100	100
3	C	104/129 (81%)	95 (91%)	9 (9%)	0	100	100
3	G	104/129 (81%)	96 (92%)	8 (8%)	0	100	100
4	D	93/125 (74%)	86 (92%)	5 (5%)	2 (2%)	8	15
4	H	93/125 (74%)	89 (96%)	3 (3%)	1 (1%)	17	36
All	All	747/982 (76%)	704 (94%)	39 (5%)	4 (0%)	34	60

All (4) Ramachandran outliers are listed below:

Mol	Chain	Res	Type
4	H	101	GLY
1	A	81	ASP
4	D	101	GLY
4	D	116	THR

5.3.2 Protein sidechains ⓘ

In the following table, the Percentiles column shows the percent sidechain outliers of the chain as a percentile score with respect to all X-ray entries followed by that with respect to entries of similar resolution.

The Analysed column shows the number of residues for which the sidechain conformation was analysed, and the total number of residues.

Mol	Chain	Analysed	Rotameric	Outliers	Percentiles	
1	A	84/110 (76%)	82 (98%)	2 (2%)	57	82
1	E	84/110 (76%)	81 (96%)	3 (4%)	42	71
2	B	67/78 (86%)	67 (100%)	0	100	100
2	F	72/78 (92%)	67 (93%)	5 (7%)	19	38
3	C	84/101 (83%)	79 (94%)	5 (6%)	24	47
3	G	84/101 (83%)	80 (95%)	4 (5%)	31	58
4	D	81/105 (77%)	74 (91%)	7 (9%)	13	25
4	H	81/105 (77%)	78 (96%)	3 (4%)	41	69
All	All	637/788 (81%)	608 (95%)	29 (5%)	33	61

5 of 29 residues with a non-rotameric sidechain are listed below:

Mol	Chain	Res	Type
4	D	102	GLU
1	E	120	MET
4	H	33	SER
1	E	49	ARG
2	F	19	ARG

Some sidechains can be flipped to improve hydrogen bonding and reduce clashes. 5 of 15 such sidechains are listed below:

Mol	Chain	Res	Type
1	E	68	GLN
2	F	18	HIS
4	H	46	HIS
4	D	92	GLN
4	H	44	GLN

5.3.3 RNA ⓘ

There are no RNA molecules in this entry.

5.4 Non-standard residues in protein, DNA, RNA chains [i](#)

There are no non-standard protein/DNA/RNA residues in this entry.

5.5 Carbohydrates [i](#)

There are no carbohydrates in this entry.

5.6 Ligand geometry [i](#)

Of 6 ligands modelled in this entry, 1 is monoatomic - leaving 5 for Mogul analysis.

In the following table, the Counts columns list the number of bonds (or angles) for which Mogul statistics could be retrieved, the number of bonds (or angles) that are observed in the model and the number of bonds (or angles) that are defined in the chemical component dictionary. The Link column lists molecule types, if any, to which the group is linked. The Z score for a bond length (or angle) is the number of standard deviations the observed value is removed from the expected value. A bond length (or angle) with $|Z| > 2$ is considered an outlier worth inspection. RMSZ is the root-mean-square of all Z scores of the bond lengths (or angles).

Mol	Type	Chain	Res	Link	Bond lengths			Bond angles		
					Counts	RMSZ	$\# Z > 2$	Counts	RMSZ	$\# Z > 2$
7	SO4	C	201	-	4,4,4	0.62	0	6,6,6	0.46	0
7	SO4	H	201	-	4,4,4	0.63	0	6,6,6	0.68	0
9	CX8	I	101	5	27,30,30	1.96	6 (22%)	25,44,44	1.87	4 (16%)
9	CX8	I	102	-	27,30,30	1.78	4 (14%)	25,44,44	1.60	3 (12%)
9	CX8	J	100	6	27,30,30	1.72	3 (11%)	25,44,44	1.83	4 (16%)

In the following table, the Chirals column lists the number of chiral outliers, the number of chiral centers analysed, the number of these observed in the model and the number defined in the chemical component dictionary. Similar counts are reported in the Torsion and Rings columns. '-' means no outliers of that kind were identified.

Mol	Type	Chain	Res	Link	Chirals	Torsions	Rings
7	SO4	C	201	-	-	0/0/0/0	0/0/0/0
7	SO4	H	201	-	-	0/0/0/0	0/0/0/0
9	CX8	I	101	5	-	0/5/25/25	0/5/5/5
9	CX8	I	102	-	-	0/5/25/25	0/5/5/5
9	CX8	J	100	6	-	0/5/25/25	0/5/5/5

The worst 5 of 13 bond length outliers are listed below:

Mol	Chain	Res	Type	Atoms	Z	Observed(Å)	Ideal(Å)
9	I	101	CX8	C4-N3	2.05	1.55	1.50
9	I	101	CX8	C3-C4	2.09	1.59	1.50
9	I	102	CX8	C8-N4	2.50	1.42	1.38
9	I	101	CX8	C12-N4	2.56	1.42	1.38
9	J	100	CX8	C8-N4	2.58	1.42	1.38

The worst 5 of 11 bond angle outliers are listed below:

Mol	Chain	Res	Type	Atoms	Z	Observed(°)	Ideal(°)
9	I	101	CX8	C3-C4-N3	2.23	114.95	109.27
9	J	100	CX8	C3-C4-N3	2.87	116.60	109.27
9	J	100	CX8	C7-N4-C8	3.14	122.18	119.10
9	I	102	CX8	C5-N1-C1	3.18	118.88	111.77
9	I	101	CX8	C7-N4-C8	3.94	122.97	119.10

There are no chirality outliers.

There are no torsion outliers.

There are no ring outliers.

3 monomers are involved in 5 short contacts:

Mol	Chain	Res	Type	Clashes	Symm-Clashes
9	I	101	CX8	1	0
9	I	102	CX8	1	0
9	J	100	CX8	3	0

5.7 Other polymers [i](#)

There are no such residues in this entry.

5.8 Polymer linkage issues [i](#)

There are no chain breaks in this entry.

6 Fit of model and data ⓘ

6.1 Protein, DNA and RNA chains ⓘ

In the following table, the column labelled ‘#RSRZ> 2’ contains the number (and percentage) of RSRZ outliers, followed by percent RSRZ outliers for the chain as percentile scores relative to all X-ray entries and entries of similar resolution. The OWAB column contains the minimum, median, 95th percentile and maximum values of the occupancy-weighted average B-factor per residue. The column labelled ‘Q< 0.9’ lists the number of (and percentage) of residues with an average occupancy less than 0.9.

Mol	Chain	Analysed	<RSRZ>	#RSRZ>2	OWAB(Å ²)	Q<0.9
1	A	96/135 (71%)	0.31	3 (3%) 52 45	51, 72, 107, 159	0
1	E	96/135 (71%)	0.26	3 (3%) 52 45	38, 53, 83, 144	0
2	B	82/102 (80%)	0.47	2 (2%) 62 56	52, 70, 97, 154	0
2	F	87/102 (85%)	0.36	1 (1%) 82 79	42, 52, 75, 157	0
3	C	106/129 (82%)	0.26	2 (1%) 70 64	39, 60, 90, 146	0
3	G	106/129 (82%)	0.24	3 (2%) 56 49	49, 72, 112, 147	0
4	D	95/125 (76%)	0.41	1 (1%) 82 79	44, 61, 96, 145	0
4	H	95/125 (76%)	0.30	1 (1%) 82 79	47, 72, 116, 160	0
5	I	145/145 (100%)	0.05	4 (2%) 56 49	77, 132, 180, 217	0
6	J	145/145 (100%)	0.07	3 (2%) 67 61	79, 135, 181, 199	0
All	All	1053/1272 (82%)	0.25	23 (2%) 65 59	38, 73, 160, 217	0

The worst 5 of 23 RSRZ outliers are listed below:

Mol	Chain	Res	Type	RSRZ
4	H	122	LYS	4.8
5	I	-72	DA	4.4
4	D	122	LYS	4.1
1	E	39	HIS	3.6
2	F	16	LYS	3.5

6.2 Non-standard residues in protein, DNA, RNA chains ⓘ

There are no non-standard protein/DNA/RNA residues in this entry.

6.3 Carbohydrates [i](#)

There are no carbohydrates in this entry.

6.4 Ligands [i](#)

In the following table, the Atoms column lists the number of modelled atoms in the group and the number defined in the chemical component dictionary. LLDF column lists the quality of electron density of the group with respect to its neighbouring residues in protein, DNA or RNA chains. The B-factors column lists the minimum, median, 95th percentile and maximum values of B factors of atoms in the group. The column labelled 'Q< 0.9' lists the number of atoms with occupancy less than 0.9.

Mol	Type	Chain	Res	Atoms	RSCC	RSR	LLDF	B-factors(\AA^2)	Q<0.9
8	MG	E	201	1/1	0.98	0.15	-1.33	45,45,45,45	0
7	SO4	H	201	5/5	0.97	0.12	-1.52	84,85,93,102	0
7	SO4	C	201	5/5	0.95	0.14	-1.71	90,98,103,104	0
9	CX8	I	102	26/26	0.94	0.17	-	152,170,181,185	0
9	CX8	J	100	26/26	0.79	0.23	-	122,151,197,200	0
9	CX8	I	101	26/26	0.79	0.25	-	145,163,230,238	0

6.5 Other polymers [i](#)

There are no such residues in this entry.