



# Full wwPDB X-ray Structure Validation Report ⓘ

Feb 1, 2016 – 06:25 AM GMT

PDB ID : 2X0Y  
Title : SCREENING-BASED DISCOVERY OF DRUG-LIKE O-GLCNACASE INHIBITOR SCAFFOLDS  
Authors : Dorfmueller, H.C.; Van Aalten, D.M.F.  
Deposited on : 2009-12-18  
Resolution : 2.25 Å(reported)

This is a Full wwPDB X-ray Structure Validation Report for a publicly released PDB entry.  
We welcome your comments at [validation@mail.wwpdb.org](mailto:validation@mail.wwpdb.org)  
A user guide is available at  
<http://wwpdb.org/validation/2016/XrayValidationReportHelp>  
with specific help available everywhere you see the ⓘ symbol.

---

The following versions of software and data (see [references ⓘ](#)) were used in the production of this report:

MolProbity : 4.02b-467  
Mogul : 1.7 (RC4), CSD as536be (2015)  
Xtriage (Phenix) : 1.9-1692  
EDS : rb-20026688  
Percentile statistics : 20151230.v01 (using entries in the PDB archive December 30th 2015)  
Refmac : 5.8.0135  
CCP4 : 6.5.0  
Ideal geometry (proteins) : Engh & Huber (2001)  
Ideal geometry (DNA, RNA) : Parkinson et al. (1996)  
Validation Pipeline (wwPDB-VP) : trunk26865

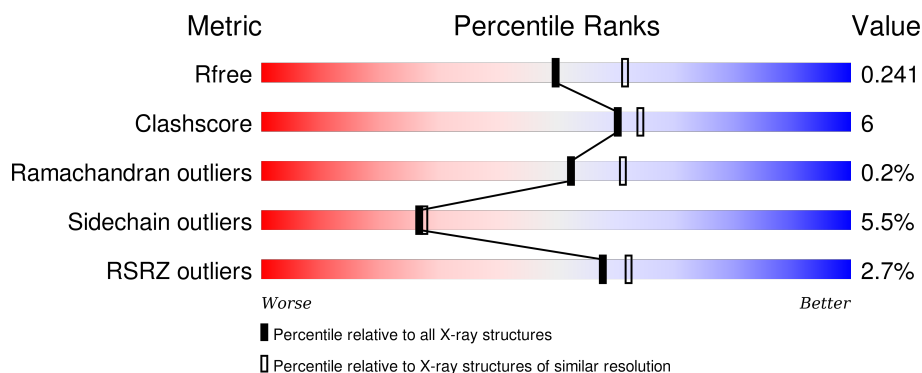
# 1 Overall quality at a glance

The following experimental techniques were used to determine the structure:

## *X-RAY DIFFRACTION*

The reported resolution of this entry is 2.25 Å.

Percentile scores (ranging between 0-100) for global validation metrics of the entry are shown in the following graphic. The table shows the number of entries on which the scores are based.



Metric	Whole archive (#Entries)	Similar resolution (#Entries, resolution range(Å))
$R_{free}$	91344	1640 (2.28-2.24)
Clashscore	102246	1095 (2.26-2.26)
Ramachandran outliers	100387	1063 (2.26-2.26)
Sidechain outliers	100360	1063 (2.26-2.26)
RSRZ outliers	91569	1647 (2.28-2.24)

The table below summarises the geometric issues observed across the polymeric chains and their fit to the electron density. The red, orange, yellow and green segments on the lower bar indicate the fraction of residues that contain outliers for  $\geq 3$ , 2, 1 and 0 types of geometric quality criteria. A grey segment represents the fraction of residues that are not modelled. The numeric value for each fraction is indicated below the corresponding segment, with a dot representing fractions  $\leq 5\%$ . The upper red bar (where present) indicates the fraction of residues that have poor fit to the electron density. The numeric value is given above the bar.

Mol	Chain	Length	Quality of chain
1	A	594	<div> <div>3%</div> <div> <div></div> <div>83%</div> <div>13%</div> <div>• •</div> </div> </div>
1	B	594	<div> <div>2%</div> <div> <div></div> <div>86%</div> <div>12%</div> <div>• •</div> </div> </div>

## 2 Entry composition [i](#)

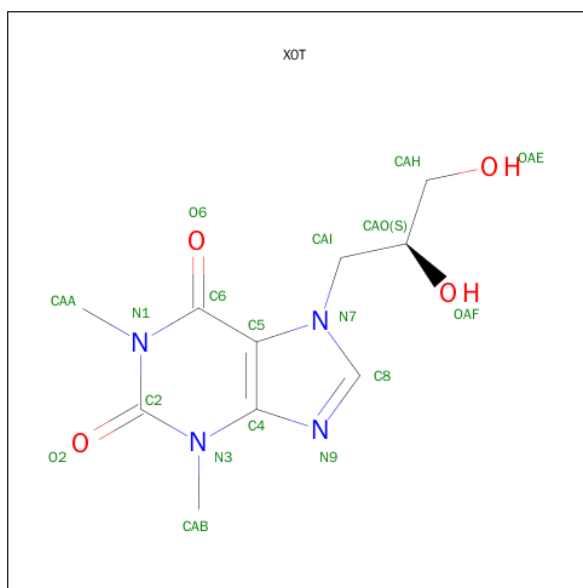
There are 3 unique types of molecules in this entry. The entry contains 10123 atoms, of which 0 are hydrogens and 0 are deuteriums.

In the tables below, the ZeroOcc column contains the number of atoms modelled with zero occupancy, the AltConf column contains the number of residues with at least one atom in alternate conformation and the Trace column contains the number of residues modelled with at most 2 atoms.

- Molecule 1 is a protein called O-GLCNACASE NAGJ.

Mol	Chain	Residues	Atoms					ZeroOcc	AltConf	Trace
1	A	584	Total	C	N	O	S	0	1	0
			4633	2915	759	942	17			
1	B	585	Total	C	N	O	S	0	0	0
			4629	2913	758	941	17			

- Molecule 2 is 7-[(2S)-2,3-DIHYDROXYPROPYL]-1,3-DIMETHYL-3,7-DIHYDRO-1H-PURINE-2,6-DIONE (three-letter code: XOT) (formula: C<sub>10</sub>H<sub>14</sub>N<sub>4</sub>O<sub>4</sub>).



Mol	Chain	Residues	Atoms				ZeroOcc	AltConf
2	A	1	Total	C	N	O	0	0
			18	10	4	4		
2	B	1	Total	C	N	O	0	0
			18	10	4	4		

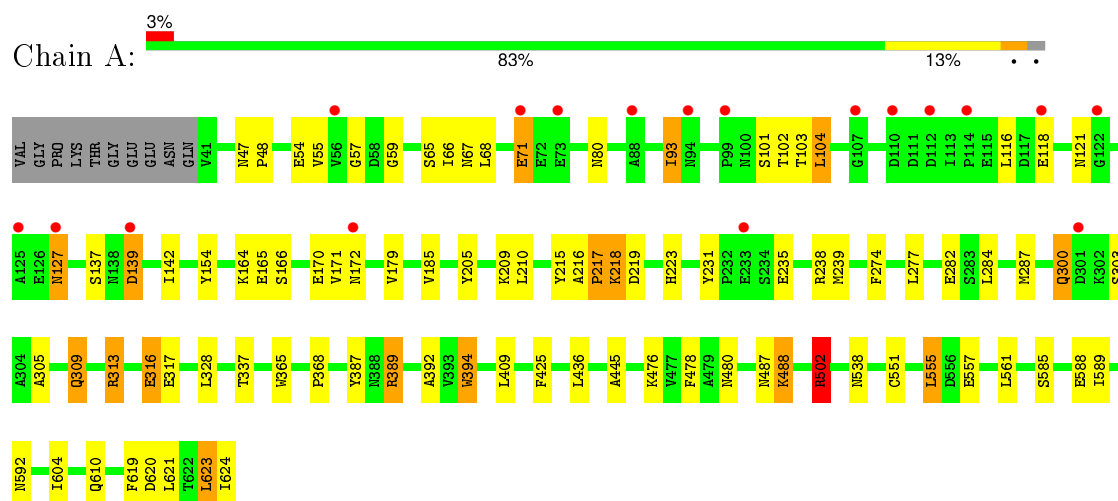
- Molecule 3 is water.

Mol	Chain	Residues	Atoms		ZeroOcc	AltConf
3	A	392	Total 392	O 392	0	0
3	B	433	Total 433	O 433	0	0

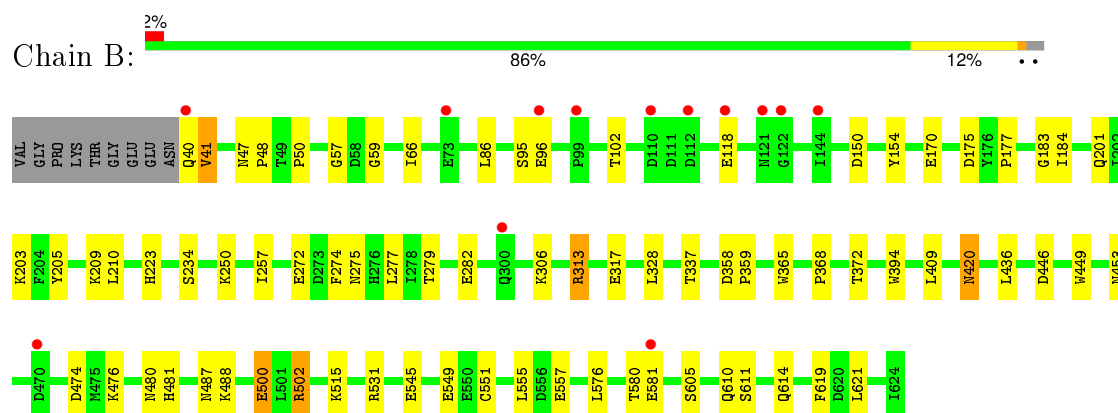
### 3 Residue-property plots [i](#)

These plots are drawn for all protein, RNA and DNA chains in the entry. The first graphic for a chain summarises the proportions of errors displayed in the second graphic. The second graphic shows the sequence view annotated by issues in geometry and electron density. Residues are color-coded according to the number of geometric quality criteria for which they contain at least one outlier: green = 0, yellow = 1, orange = 2 and red = 3 or more. A red dot above a residue indicates a poor fit to the electron density ( $RSRZ > 2$ ). Stretches of 2 or more consecutive residues without any outlier are shown as a green connector. Residues present in the sample, but not in the model, are shown in grey.

#### • Molecule 1: O-GLCNACASE NAGJ



#### • Molecule 1: O-GLCNACASE NAGJ



## 4 Data and refinement statistics

Property	Value	Source
Space group	I 21 21 21	Depositor
Cell constants a, b, c, $\alpha$ , $\beta$ , $\gamma$	130.41Å 148.55Å 151.97Å 90.00° 90.00° 90.00°	Depositor
Resolution (Å)	19.88 – 2.25 19.88 – 2.25	Depositor EDS
% Data completeness (in resolution range)	99.9 (19.88-2.25) 99.9 (19.88-2.25)	Depositor EDS
$R_{merge}$	0.11	Depositor
$R_{sym}$	(Not available)	Depositor
$\langle I/\sigma(I) \rangle$ <sup>1</sup>	3.08 (at 2.26Å)	Xtriage
Refinement program	REFMAC 5.5.0088	Depositor
R, $R_{free}$	0.203 , 0.246 0.196 , 0.241	Depositor DCC
$R_{free}$ test set	1400 reflections (2.04%)	DCC
Wilson B-factor (Å <sup>2</sup> )	26.3	Xtriage
Anisotropy	0.046	Xtriage
Bulk solvent $k_{sol}$ (e/Å <sup>3</sup> ), $B_{sol}$ (Å <sup>2</sup> )	0.34 , 37.2	EDS
Estimated twinning fraction	0.007 for -h,-l,-k	Xtriage
L-test for twinning <sup>2</sup>	$\langle  L  \rangle = 0.50$ , $\langle L^2 \rangle = 0.33$	Xtriage
Outliers	0 of 69865 reflections	Xtriage
$F_o, F_c$ correlation	0.94	EDS
Total number of atoms	10123	wwPDB-VP
Average B, all atoms (Å <sup>2</sup> )	28.0	wwPDB-VP

Xtriage's analysis on translational NCS is as follows: *The largest off-origin peak in the Patterson function is 3.53% of the height of the origin peak. No significant pseudotranslation is detected.*

<sup>1</sup>Intensities estimated from amplitudes.

<sup>2</sup>Theoretical values of  $\langle |L| \rangle$ ,  $\langle L^2 \rangle$  for acentric reflections are 0.5, 0.375 respectively for untwinned datasets, and 0.333, 0.2 for perfectly twinned datasets.

## 5 Model quality [i](#)

### 5.1 Standard geometry [i](#)

Bond lengths and bond angles in the following residue types are not validated in this section: X0T

The Z score for a bond length (or angle) is the number of standard deviations the observed value is removed from the expected value. A bond length (or angle) with  $|Z| > 5$  is considered an outlier worth inspection. RMSZ is the root-mean-square of all Z scores of the bond lengths (or angles).

Mol	Chain	Bond lengths		Bond angles	
		RMSZ	$\# Z  > 5$	RMSZ	$\# Z  > 5$
1	A	0.54	0/4732	0.60	1/6425 (0.0%)
1	B	0.55	0/4725	0.60	2/6415 (0.0%)
All	All	0.55	0/9457	0.60	3/12840 (0.0%)

There are no bond length outliers.

All (3) bond angle outliers are listed below:

Mol	Chain	Res	Type	Atoms	Z	Observed(°)	Ideal(°)
1	B	502	ARG	NE-CZ-NH1	7.59	124.09	120.30
1	B	502	ARG	NE-CZ-NH2	-6.95	116.83	120.30
1	A	502	ARG	NE-CZ-NH1	5.24	122.92	120.30

There are no chirality outliers.

There are no planarity outliers.

### 5.2 Too-close contacts [i](#)

In the following table, the Non-H and H(model) columns list the number of non-hydrogen atoms and hydrogen atoms in the chain respectively. The H(added) column lists the number of hydrogen atoms added and optimized by MolProbity. The Clashes column lists the number of clashes within the asymmetric unit, whereas Symm-Clashes lists symmetry related clashes.

Mol	Chain	Non-H	H(model)	H(added)	Clashes	Symm-Clashes
1	A	4633	0	4421	64	0
1	B	4629	0	4420	37	0
2	A	18	0	14	0	0
2	B	18	0	14	0	0
3	A	392	0	0	5	0
3	B	433	0	0	5	0

*Continued on next page...*

*Continued from previous page...*

Mol	Chain	Non-H	H(model)	H(added)	Clashes	Symm-Clashes
All	All	10123	0	8869	101	0

The all-atom clashscore is defined as the number of clashes found per 1000 atoms (including hydrogen atoms). The all-atom clashscore for this structure is 6.

All (101) close contacts within the same asymmetric unit are listed below, sorted by their clash magnitude.

Atom-1	Atom-2	Interatomic distance (Å)	Clash overlap (Å)
1:A:121:ASN:HB3	3:A:2046:HOH:O	1.53	1.04
1:A:127:ASN:H	1:A:127:ASN:HD22	1.10	1.00
1:A:238:ARG:HH21	1:A:239:MET:HE2	1.26	0.96
1:A:238:ARG:HH21	1:A:239:MET:CE	1.84	0.89
1:B:47:ASN:HD21	1:B:446:ASP:HB2	1.40	0.87
1:A:309:GLN:HA	1:A:309:GLN:HE21	1.42	0.84
1:A:305:ALA:O	1:A:309:GLN:HG2	1.80	0.82
1:A:502:ARG:O	1:A:502:ARG:HD3	1.84	0.78
1:B:453:ASN:HB3	3:B:2284:HOH:O	1.86	0.75
1:B:502:ARG:HD3	1:B:502:ARG:O	1.87	0.75
1:A:127:ASN:H	1:A:127:ASN:ND2	1.86	0.72
1:A:623:LEU:O	1:A:624:ILE:HB	1.92	0.70
1:A:303:SER:HB3	3:A:2156:HOH:O	1.92	0.69
1:B:313:ARG:HD3	1:B:317:GLU:OE2	1.98	0.64
1:A:238:ARG:NH2	1:A:239:MET:CE	2.60	0.64
1:B:41:VAL:HG13	1:B:59:GLY:HA3	1.79	0.63
1:A:235:GLU:OE2	1:A:238:ARG:NH1	2.32	0.62
1:B:47:ASN:ND2	1:B:446:ASP:HB2	2.13	0.61
1:A:59:GLY:H	1:A:170:GLU:HG2	1.64	0.61
1:A:274:PHE:CZ	1:A:313:ARG:HD2	2.35	0.60
1:A:387:TYR:O	1:A:389:ARG:HG3	2.01	0.60
1:A:316:GLU:HG2	3:A:2164:HOH:O	2.03	0.58
1:B:275:ASN:O	1:B:279:THR:HG23	2.03	0.58
1:A:387:TYR:HB3	1:A:389:ARG:HD2	1.85	0.57
1:A:66:ILE:HG22	1:A:102:THR:HB	1.86	0.57
1:A:337:THR:HB	1:A:368:PRO:HA	1.87	0.55
1:A:48:PRO:HD2	1:A:209:LYS:HD2	1.88	0.55
1:B:611:SER:HA	1:B:614:GLN:HE21	1.72	0.55
1:A:47:ASN:OD1	3:A:2007:HOH:O	2.18	0.55
1:A:436:LEU:HD11	1:A:551:CYS:HB3	1.89	0.54
1:A:137:SER:O	1:A:170:GLU:HB2	2.07	0.53
1:B:500:GLU:CD	1:B:500:GLU:H	2.10	0.53
1:B:337:THR:HB	1:B:368:PRO:HA	1.90	0.53

*Continued on next page...*



*Continued from previous page...*

Atom-1	Atom-2	Interatomic distance (Å)	Clash overlap (Å)
1:A:238:ARG:NH2	1:A:239:MET:HE2	2.10	0.53
1:A:118:GLU:O	1:A:121:ASN:ND2	2.42	0.53
1:B:177:PRO:HB3	1:B:449:TRP:CE3	2.45	0.52
1:A:127:ASN:N	1:A:127:ASN:HD22	1.84	0.52
1:B:306:LYS:HE2	3:B:2168:HOH:O	2.10	0.51
1:B:576:LEU:HD23	1:B:621:LEU:HD11	1.92	0.51
1:B:150:ASP:OD1	1:B:250:LYS:HD2	2.09	0.51
1:A:67[C]:ASN:HB2	1:A:103:THR:HG23	1.91	0.51
1:A:215:TYR:CE2	1:A:239:MET:HE1	2.46	0.51
1:A:284:LEU:HA	1:A:287:MET:HE3	1.93	0.50
1:A:104:LEU:HD13	1:A:142:ILE:HB	1.93	0.50
1:A:313:ARG:HD3	1:A:317:GLU:OE2	2.11	0.49
1:B:581:GLU:H	1:B:581:GLU:CD	2.15	0.49
1:A:502:ARG:C	1:A:502:ARG:HD3	2.25	0.49
1:A:619:PHE:HE2	1:A:621:LEU:HD23	1.76	0.49
1:A:620:ASP:HB3	1:A:623:LEU:HD22	1.94	0.49
1:A:57:GLY:HA3	1:A:170:GLU:HG3	1.94	0.49
1:A:238:ARG:NH2	1:A:239:MET:HE3	2.28	0.49
1:A:55:VAL:HA	1:A:171:VAL:HG12	1.95	0.49
1:A:282:GLU:HB2	3:A:2167:HOH:O	2.13	0.49
1:A:210:LEU:HD21	1:A:445:ALA:HA	1.95	0.48
1:B:282:GLU:HB2	3:B:2195:HOH:O	2.12	0.48
1:A:154:TYR:HB3	1:A:209:LYS:HE3	1.96	0.48
1:B:502:ARG:C	1:B:502:ARG:HD3	2.35	0.47
1:B:474:ASP:OD1	1:B:531:ARG:NH2	2.48	0.46
1:B:57:GLY:HA3	1:B:170:GLU:OE1	2.15	0.46
1:A:216:ALA:N	1:A:217:PRO:HD3	2.30	0.46
1:B:487:ASN:O	1:B:488:LYS:HB2	2.16	0.46
1:A:67[A]:ASN:HB2	1:A:103:THR:HG23	1.97	0.46
1:B:358:ASP:HA	1:B:359:PRO:HD3	1.82	0.46
1:A:205:TYR:HB3	1:A:210:LEU:HB2	1.98	0.45
1:A:300:GLN:HA	1:A:300:GLN:OE1	2.16	0.45
1:A:59:GLY:H	1:A:170:GLU:CG	2.29	0.45
1:B:48:PRO:HD2	1:B:209:LYS:HD2	1.98	0.45
1:A:585:SER:O	1:A:589:ILE:HG13	2.16	0.45
1:A:65:SER:O	1:A:101:SER:HB2	2.17	0.45
1:A:137:SER:OG	1:A:170:GLU:HA	2.17	0.44
1:A:392:ALA:HA	1:A:425:PHE:HB3	1.99	0.44
1:A:274:PHE:CE2	1:A:313:ARG:HD2	2.52	0.44
1:B:274:PHE:CE2	1:B:313:ARG:HD2	2.53	0.43
1:A:231:TYR:CE1	1:A:239:MET:HE3	2.53	0.43

*Continued on next page...*

*Continued from previous page...*

Atom-1	Atom-2	Interatomic distance (Å)	Clash overlap (Å)
1:A:185:VAL:HG21	1:A:394:TRP:CZ3	2.54	0.43
1:B:610:GLN:NE2	3:B:2420:HOH:O	2.50	0.43
1:A:165:GLU:O	1:A:166:SER:HB3	2.18	0.43
1:A:487:ASN:O	1:A:488:LYS:HB2	2.19	0.43
1:B:205:TYR:HB3	1:B:210:LEU:HB2	2.01	0.43
1:B:50:PRO:HA	1:B:175:ASP:OD1	2.19	0.43
1:B:66:ILE:HG22	1:B:102:THR:HB	2.02	0.42
1:B:203:LYS:HG3	3:B:2111:HOH:O	2.19	0.42
1:A:557:GLU:HG2	1:A:604:ILE:HG22	2.01	0.42
1:A:218:LYS:HD2	1:A:218:LYS:N	2.34	0.42
1:B:481:HIS:HB3	1:B:605:SER:HB2	2.02	0.41
1:B:545:GLU:O	1:B:549:GLU:HB2	2.20	0.41
1:A:476:LYS:O	1:A:480:ASN:HB2	2.20	0.41
1:A:215:TYR:OH	1:A:239:MET:HE2	2.21	0.41
1:B:154:TYR:CD1	1:B:209:LYS:HG2	2.56	0.41
1:B:183:GLY:C	1:B:184:ILE:HD12	2.41	0.41
1:A:218:LYS:HD2	1:A:218:LYS:H	1.86	0.41
1:B:476:LYS:O	1:B:480:ASN:HB2	2.20	0.41
1:B:420:ASN:H	1:B:420:ASN:HD22	1.69	0.41
1:A:93:ILE:H	1:A:93:ILE:HD12	1.86	0.41
1:A:561:LEU:HD22	1:A:610:GLN:HA	2.04	0.40
1:B:201:GLN:HB3	1:B:205:TYR:CZ	2.56	0.40
1:A:164:LYS:HG3	1:A:165:GLU:HG2	2.02	0.40
1:B:436:LEU:HD21	1:B:551:CYS:HB3	2.03	0.40
1:A:127:ASN:ND2	1:A:127:ASN:N	2.55	0.40
1:B:368:PRO:HD2	1:B:372:THR:HG21	2.03	0.40
1:A:478:PHE:CE1	1:A:555:LEU:HD13	2.57	0.40

There are no symmetry-related clashes.

## 5.3 Torsion angles [i](#)

### 5.3.1 Protein backbone [i](#)

In the following table, the Percentiles column shows the percent Ramachandran outliers of the chain as a percentile score with respect to all X-ray entries followed by that with respect to entries of similar resolution.

The Analysed column shows the number of residues for which the backbone conformation was analysed, and the total number of residues.

Mol	Chain	Analysed	Favoured	Allowed	Outliers	Percentiles	
1	A	584/594 (98%)	556 (95%)	26 (4%)	2 (0%)	46	52
1	B	583/594 (98%)	562 (96%)	21 (4%)	0	100	100
All	All	1167/1188 (98%)	1118 (96%)	47 (4%)	2 (0%)	52	61

All (2) Ramachandran outliers are listed below:

Mol	Chain	Res	Type
1	A	139	ASP
1	A	71	GLU

### 5.3.2 Protein sidechains ⓘ

In the following table, the Percentiles column shows the percent sidechain outliers of the chain as a percentile score with respect to all X-ray entries followed by that with respect to entries of similar resolution.

The Analysed column shows the number of residues for which the sidechain conformation was analysed, and the total number of residues.

Mol	Chain	Analysed	Rotameric	Outliers	Percentiles	
1	A	501/507 (99%)	469 (94%)	32 (6%)	22	21
1	B	500/507 (99%)	477 (95%)	23 (5%)	33	37
All	All	1001/1014 (99%)	946 (94%)	55 (6%)	27	27

All (55) residues with a non-rotameric sidechain are listed below:

Mol	Chain	Res	Type
1	A	54	GLU
1	A	68	LEU
1	A	71	GLU
1	A	80	ASN
1	A	93	ILE
1	A	104	LEU
1	A	116	LEU
1	A	127	ASN
1	A	139	ASP
1	A	172	ASN
1	A	179	VAL
1	A	217	PRO
1	A	218	LYS
1	A	219	ASP

*Continued on next page...*

*Continued from previous page...*

Mol	Chain	Res	Type
1	A	223	HIS
1	A	277	LEU
1	A	300	GLN
1	A	309	GLN
1	A	313	ARG
1	A	316	GLU
1	A	328	LEU
1	A	365	TRP
1	A	389	ARG
1	A	394	TRP
1	A	409	LEU
1	A	488	LYS
1	A	502	ARG
1	A	538	ASN
1	A	555	LEU
1	A	588	GLU
1	A	592	ASN
1	A	623	LEU
1	B	40	GLN
1	B	41	VAL
1	B	86	LEU
1	B	95	SER
1	B	96	GLU
1	B	118	GLU
1	B	223	HIS
1	B	234	SER
1	B	257	ILE
1	B	272	GLU
1	B	277	LEU
1	B	313	ARG
1	B	328	LEU
1	B	365	TRP
1	B	394	TRP
1	B	409	LEU
1	B	420	ASN
1	B	500	GLU
1	B	515	LYS
1	B	555	LEU
1	B	557	GLU
1	B	580	THR
1	B	619	PHE

Some sidechains can be flipped to improve hydrogen bonding and reduce clashes. All (17) such

sidechains are listed below:

Mol	Chain	Res	Type
1	A	80	ASN
1	A	94	ASN
1	A	121	ASN
1	A	127	ASN
1	A	237	GLN
1	A	309	GLN
1	A	510	ASN
1	A	592	ASN
1	A	610	GLN
1	B	40	GLN
1	B	47	ASN
1	B	138	ASN
1	B	388	ASN
1	B	420	ASN
1	B	542	ASN
1	B	610	GLN
1	B	614	GLN

### 5.3.3 RNA [i](#)

There are no RNA molecules in this entry.

## 5.4 Non-standard residues in protein, DNA, RNA chains [i](#)

There are no non-standard protein/DNA/RNA residues in this entry.

## 5.5 Carbohydrates [i](#)

There are no carbohydrates in this entry.

## 5.6 Ligand geometry [i](#)

2 ligands are modelled in this entry.

In the following table, the Counts columns list the number of bonds (or angles) for which Mogul statistics could be retrieved, the number of bonds (or angles) that are observed in the model and the number of bonds (or angles) that are defined in the chemical component dictionary. The Link column lists molecule types, if any, to which the group is linked. The Z score for a bond length (or angle) is the number of standard deviations the observed value is removed from the expected

value. A bond length (or angle) with  $|Z| > 2$  is considered an outlier worth inspection. RMSZ is the root-mean-square of all Z scores of the bond lengths (or angles).

Mol	Type	Chain	Res	Link	Bond lengths			Bond angles		
					Counts	RMSZ	$\# Z  > 2$	Counts	RMSZ	$\# Z  > 2$
2	X0T	A	1625	-	12,19,19	0.87	0	11,28,28	1.00	1 (9%)
2	X0T	B	1625	-	12,19,19	0.78	0	11,28,28	0.85	0

In the following table, the Chirals column lists the number of chiral outliers, the number of chiral centers analysed, the number of these observed in the model and the number defined in the chemical component dictionary. Similar counts are reported in the Torsion and Rings columns. '-' means no outliers of that kind were identified.

Mol	Type	Chain	Res	Link	Chirals	Torsions	Rings
2	X0T	A	1625	-	-	0/4/6/6	0/2/2/2
2	X0T	B	1625	-	-	0/4/6/6	0/2/2/2

There are no bond length outliers.

All (1) bond angle outliers are listed below:

Mol	Chain	Res	Type	Atoms	Z	Observed( $^{\circ}$ )	Ideal( $^{\circ}$ )
2	A	1625	X0T	C6-C5-C4	2.22	121.52	119.93

There are no chirality outliers.

There are no torsion outliers.

There are no ring outliers.

No monomer is involved in short contacts.

## 5.7 Other polymers [i](#)

There are no such residues in this entry.

## 5.8 Polymer linkage issues [i](#)

There are no chain breaks in this entry.

## 6 Fit of model and data ⓘ

### 6.1 Protein, DNA and RNA chains ⓘ

In the following table, the column labelled ‘#RSRZ> 2’ contains the number (and percentage) of RSRZ outliers, followed by percent RSRZ outliers for the chain as percentile scores relative to all X-ray entries and entries of similar resolution. The OWAB column contains the minimum, median, 95<sup>th</sup> percentile and maximum values of the occupancy-weighted average B-factor per residue. The column labelled ‘Q< 0.9’ lists the number of (and percentage) of residues with an average occupancy less than 0.9.

Mol	Chain	Analysed	<RSRZ>	#RSRZ>2			OWAB(Å <sup>2</sup> )	Q<0.9
1	A	584/594 (98%)	-0.06	18 (3%)	52	57	12, 27, 56, 71	1 (0%)
1	B	585/594 (98%)	-0.24	13 (2%)	65	70	11, 24, 46, 60	0
All	All	1169/1188 (98%)	-0.15	31 (2%)	58	62	11, 25, 52, 71	1 (0%)

All (31) RSRZ outliers are listed below:

Mol	Chain	Res	Type	RSRZ
1	A	112	ASP	6.9
1	A	122	GLY	4.0
1	B	112	ASP	3.8
1	A	110	ASP	3.3
1	A	56	VAL	3.3
1	A	99	PRO	3.2
1	A	118	GLU	3.0
1	A	71	GLU	3.0
1	B	300	GLN	2.9
1	A	114	PRO	2.9
1	B	99	PRO	2.8
1	A	139	ASP	2.7
1	B	144	ILE	2.7
1	B	121	ASN	2.7
1	B	122	GLY	2.5
1	A	172	ASN	2.5
1	A	94	ASN	2.5
1	B	96	GLU	2.5
1	B	40	GLN	2.4
1	B	110	ASP	2.4
1	A	107	GLY	2.4
1	B	118	GLU	2.4
1	B	73	GLU	2.3
1	B	470	ASP	2.3

*Continued on next page...*

*Continued from previous page...*

Mol	Chain	Res	Type	RSRZ
1	A	125	ALA	2.3
1	A	233	GLU	2.3
1	A	73	GLU	2.2
1	A	127	ASN	2.2
1	B	581	GLU	2.2
1	A	88	ALA	2.1
1	A	301	ASP	2.0

## 6.2 Non-standard residues in protein, DNA, RNA chains [i](#)

There are no non-standard protein/DNA/RNA residues in this entry.

## 6.3 Carbohydrates [i](#)

There are no carbohydrates in this entry.

## 6.4 Ligands [i](#)

In the following table, the Atoms column lists the number of modelled atoms in the group and the number defined in the chemical component dictionary. LLDF column lists the quality of electron density of the group with respect to its neighbouring residues in protein, DNA or RNA chains. The B-factors column lists the minimum, median, 95<sup>th</sup> percentile and maximum values of B factors of atoms in the group. The column labelled 'Q< 0.9' lists the number of atoms with occupancy less than 0.9.

Mol	Type	Chain	Res	Atoms	RSCC	RSR	LLDF	B-factors( $\text{\AA}^2$ )	Q<0.9
2	X0T	B	1625	18/18	0.92	0.12	1.14	20,24,26,27	0
2	X0T	A	1625	18/18	0.94	0.10	-0.09	20,25,27,28	0

## 6.5 Other polymers [i](#)

There are no such residues in this entry.