



# Full wwPDB X-ray Structure Validation Report ⓘ

Feb 1, 2016 – 06:26 AM GMT

PDB ID : 2X1L  
Title : CRYSTAL STRUCTURE OF MYCOBACTERIUM SMEGMATIS  
METHIONYL-TRNA SYNTHETASE IN COMPLEX WITH METHIO-  
NINE AND ADENOSINE  
Authors : Ingvarsson, H.; Jones, T.A.; Unge, T.  
Deposited on : 2009-12-31  
Resolution : 2.30 Å(reported)

This is a Full wwPDB X-ray Structure Validation Report for a publicly released PDB entry.  
We welcome your comments at [validation@mail.wwpdb.org](mailto:validation@mail.wwpdb.org)  
A user guide is available at  
<http://wwpdb.org/validation/2016/XrayValidationReportHelp>  
with specific help available everywhere you see the ⓘ symbol.

---

The following versions of software and data (see [references ⓘ](#)) were used in the production of this report:

MolProbity : 4.02b-467  
Mogul : 1.7 (RC4), CSD as536be (2015)  
Xtriage (Phenix) : 1.9-1692  
EDS : rb-20026688  
Percentile statistics : 20151230.v01 (using entries in the PDB archive December 30th 2015)  
Refmac : 5.8.0135  
CCP4 : 6.5.0  
Ideal geometry (proteins) : Engh & Huber (2001)  
Ideal geometry (DNA, RNA) : Parkinson et al. (1996)  
Validation Pipeline (wwPDB-VP) : trunk26865

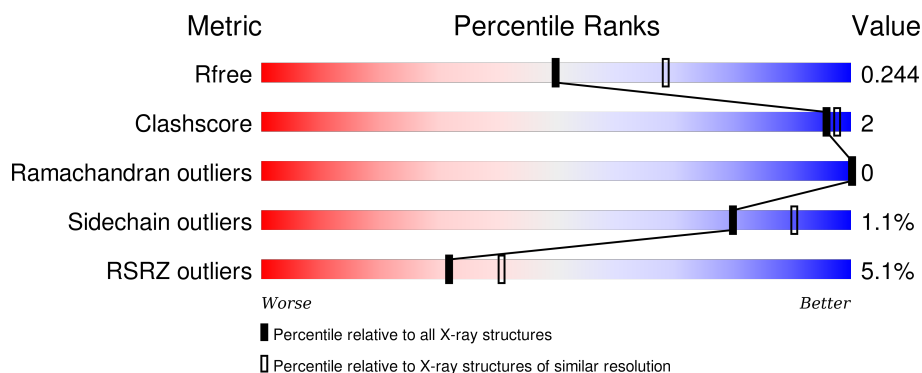
# 1 Overall quality at a glance

The following experimental techniques were used to determine the structure:

## *X-RAY DIFFRACTION*

The reported resolution of this entry is 2.30 Å.

Percentile scores (ranging between 0-100) for global validation metrics of the entry are shown in the following graphic. The table shows the number of entries on which the scores are based.



Metric	Whole archive (#Entries)	Similar resolution (#Entries, resolution range(Å))
$R_{free}$	91344	3852 (2.30-2.30)
Clashscore	102246	4452 (2.30-2.30)
Ramachandran outliers	100387	4410 (2.30-2.30)
Sidechain outliers	100360	4409 (2.30-2.30)
RSRZ outliers	91569	3857 (2.30-2.30)

The table below summarises the geometric issues observed across the polymeric chains and their fit to the electron density. The red, orange, yellow and green segments on the lower bar indicate the fraction of residues that contain outliers for  $\geq 3$ , 2, 1 and 0 types of geometric quality criteria. A grey segment represents the fraction of residues that are not modelled. The numeric value for each fraction is indicated below the corresponding segment, with a dot representing fractions  $\leq 5\%$ . The upper red bar (where present) indicates the fraction of residues that have poor fit to the electron density. The numeric value is given above the bar.

Mol	Chain	Length	Quality of chain
1	A	524	<div> <div>6%</div> <div> <div></div> <div>93%</div> <div>5% •</div> </div> </div>
1	B	524	<div> <div>6%</div> <div> <div></div> <div>88%</div> <div>• 10%</div> </div> </div>
1	C	524	<div> <div>3%</div> <div> <div></div> <div>85%</div> <div>6% 9%</div> </div> </div>

The following table lists non-polymeric compounds, carbohydrate monomers and non-standard residues in protein, DNA, RNA chains that are outliers for geometric or electron-density-fit criteria:

Mol	Type	Chain	Res	Chirality	Geometry	Clashes	Electron density
4	CXS	A	602	-	-	-	X

## 2 Entry composition

There are 6 unique types of molecules in this entry. The entry contains 12263 atoms, of which 0 are hydrogens and 0 are deuteriums.

In the tables below, the ZeroOcc column contains the number of atoms modelled with zero occupancy, the AltConf column contains the number of residues with at least one atom in alternate conformation and the Trace column contains the number of residues modelled with at most 2 atoms.

- Molecule 1 is a protein called METHIONYL-TRNA SYNTHETASE.

Mol	Chain	Residues	Atoms					ZeroOcc	AltConf	Trace
1	A	511	Total	C	N	O	S	0	0	0
			4076	2602	698	767	9			
1	B	474	Total	C	N	O	S	0	0	0
			3773	2414	648	702	9			
1	C	476	Total	C	N	O	S	0	0	0
			3789	2422	650	708	9			

There are 30 discrepancies between the modelled and reference sequences:

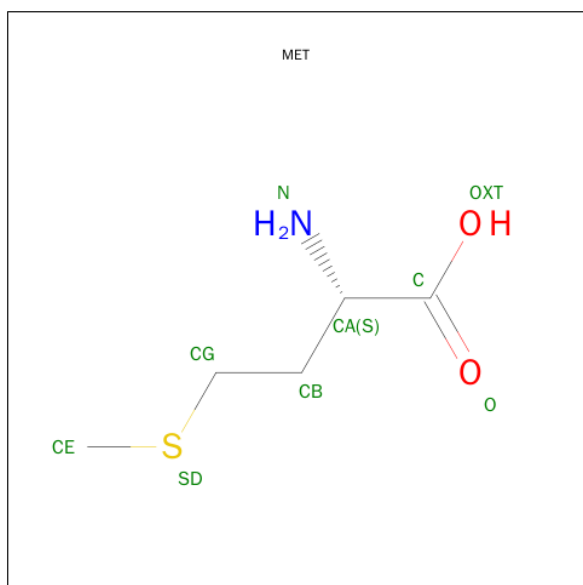
Chain	Residue	Modelled	Actual	Comment	Reference
A	-8	MET	-	EXPRESSION TAG	UNP A0R3E2
A	-7	ALA	-	EXPRESSION TAG	UNP A0R3E2
A	-6	HIS	-	EXPRESSION TAG	UNP A0R3E2
A	-5	HIS	-	EXPRESSION TAG	UNP A0R3E2
A	-4	HIS	-	EXPRESSION TAG	UNP A0R3E2
A	-3	HIS	-	EXPRESSION TAG	UNP A0R3E2
A	-2	HIS	-	EXPRESSION TAG	UNP A0R3E2
A	-1	HIS	-	EXPRESSION TAG	UNP A0R3E2
A	0	GLY	-	EXPRESSION TAG	UNP A0R3E2
A	1	GLY	-	EXPRESSION TAG	UNP A0R3E2
B	-8	MET	-	EXPRESSION TAG	UNP A0R3E2
B	-7	ALA	-	EXPRESSION TAG	UNP A0R3E2
B	-6	HIS	-	EXPRESSION TAG	UNP A0R3E2
B	-5	HIS	-	EXPRESSION TAG	UNP A0R3E2
B	-4	HIS	-	EXPRESSION TAG	UNP A0R3E2
B	-3	HIS	-	EXPRESSION TAG	UNP A0R3E2
B	-2	HIS	-	EXPRESSION TAG	UNP A0R3E2
B	-1	HIS	-	EXPRESSION TAG	UNP A0R3E2
B	0	GLY	-	EXPRESSION TAG	UNP A0R3E2
B	1	GLY	-	EXPRESSION TAG	UNP A0R3E2
C	-8	MET	-	EXPRESSION TAG	UNP A0R3E2
C	-7	ALA	-	EXPRESSION TAG	UNP A0R3E2
C	-6	HIS	-	EXPRESSION TAG	UNP A0R3E2

*Continued on next page...*

Continued from previous page...

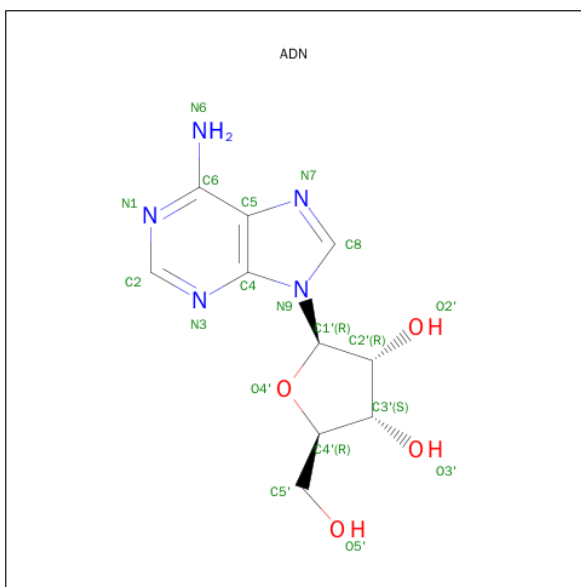
Chain	Residue	Modelled	Actual	Comment	Reference
C	-5	HIS	-	EXPRESSION TAG	UNP A0R3E2
C	-4	HIS	-	EXPRESSION TAG	UNP A0R3E2
C	-3	HIS	-	EXPRESSION TAG	UNP A0R3E2
C	-2	HIS	-	EXPRESSION TAG	UNP A0R3E2
C	-1	HIS	-	EXPRESSION TAG	UNP A0R3E2
C	0	GLY	-	EXPRESSION TAG	UNP A0R3E2
C	1	GLY	-	EXPRESSION TAG	UNP A0R3E2

- Molecule 2 is METHIONINE (three-letter code: MET) (formula: C<sub>5</sub>H<sub>11</sub>NO<sub>2</sub>S).



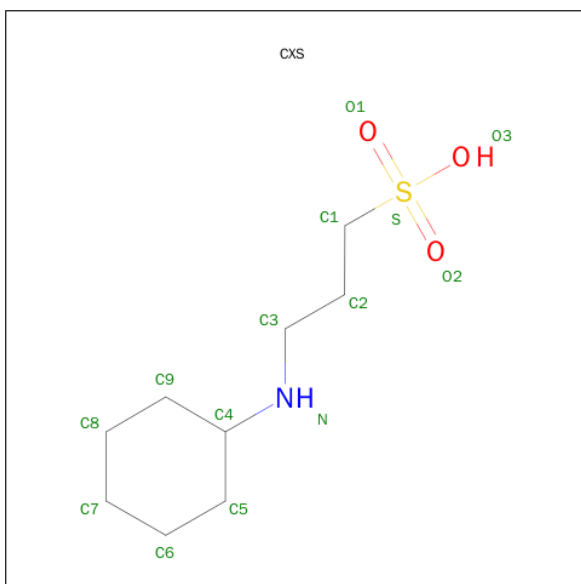
Mol	Chain	Residues	Atoms					ZeroOcc	AltConf
2	A	1	Total	C	N	O	S	0	0
			9	5	1	2	1		
2	B	1	Total	C	N	O	S	0	0
			9	5	1	2	1		
2	C	1	Total	C	N	O	S	0	0
			9	5	1	2	1		

- Molecule 3 is ADENOSINE (three-letter code: ADN) (formula: C<sub>10</sub>H<sub>13</sub>N<sub>5</sub>O<sub>4</sub>).



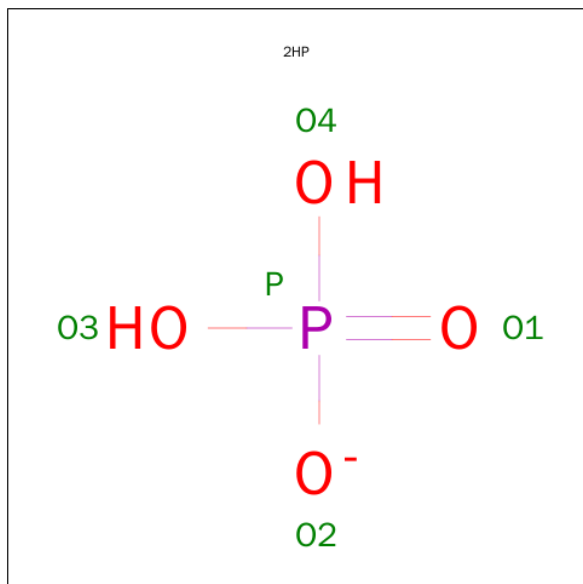
Mol	Chain	Residues	Atoms				ZeroOcc	AltConf
3	A	1	Total	C	N	O	0	0
			19	10	5	4		
3	B	1	Total	C	N	O	0	0
			19	10	5	4		
3	C	1	Total	C	N	O	0	0
			19	10	5	4		

- Molecule 4 is 3-CYCLOHEXYL-1-PROPYLSULFONIC ACID (three-letter code: CXS) (formula:  $C_9H_{19}NO_3S$ ).



Mol	Chain	Residues	Atoms					ZeroOcc	AltConf
4	A	1	Total	C	N	O	S	0	0
			14	9	1	3	1		
4	B	1	Total	C	N	O	S	0	0
			14	9	1	3	1		
4	C	1	Total	C	N	O	S	0	0
			14	9	1	3	1		

- Molecule 5 is DIHYDROGENPHOSPHATE ION (three-letter code: 2HP) (formula:  $\text{H}_2\text{O}_4\text{P}$ ).



Mol	Chain	Residues	Atoms			ZeroOcc	AltConf
5	A	1	Total	O	P	0	0
			5	4	1		
5	B	1	Total	O	P	0	0
			5	4	1		
5	C	1	Total	O	P	0	0
			5	4	1		

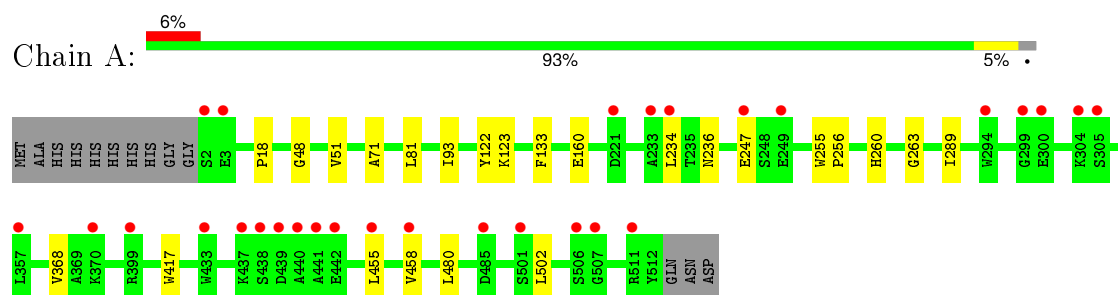
- Molecule 6 is water.

Mol	Chain	Residues	Atoms		ZeroOcc	AltConf
6	A	174	Total	O	0	0
			174	174		
6	B	148	Total	O	0	0
			148	148		
6	C	162	Total	O	0	0
			162	162		

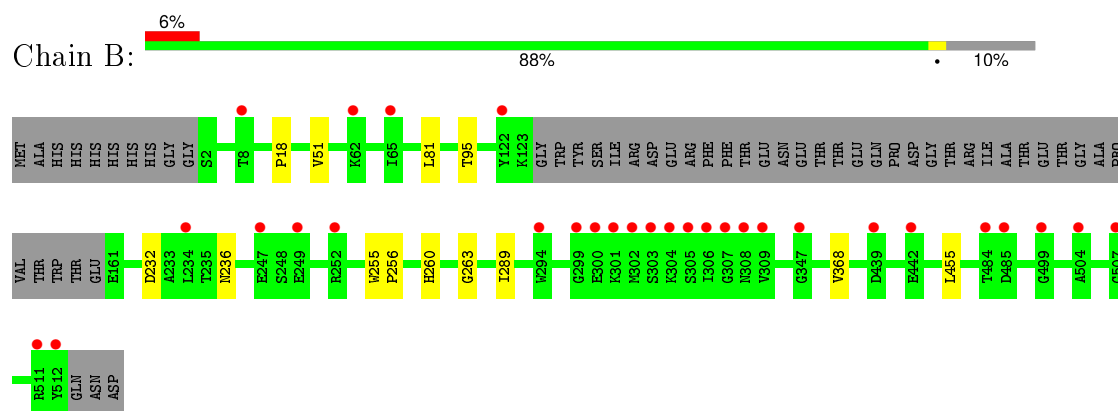
### 3 Residue-property plots

These plots are drawn for all protein, RNA and DNA chains in the entry. The first graphic for a chain summarises the proportions of errors displayed in the second graphic. The second graphic shows the sequence view annotated by issues in geometry and electron density. Residues are color-coded according to the number of geometric quality criteria for which they contain at least one outlier: green = 0, yellow = 1, orange = 2 and red = 3 or more. A red dot above a residue indicates a poor fit to the electron density ( $\text{RSRZ} > 2$ ). Stretches of 2 or more consecutive residues without any outlier are shown as a green connector. Residues present in the sample, but not in the model, are shown in grey.

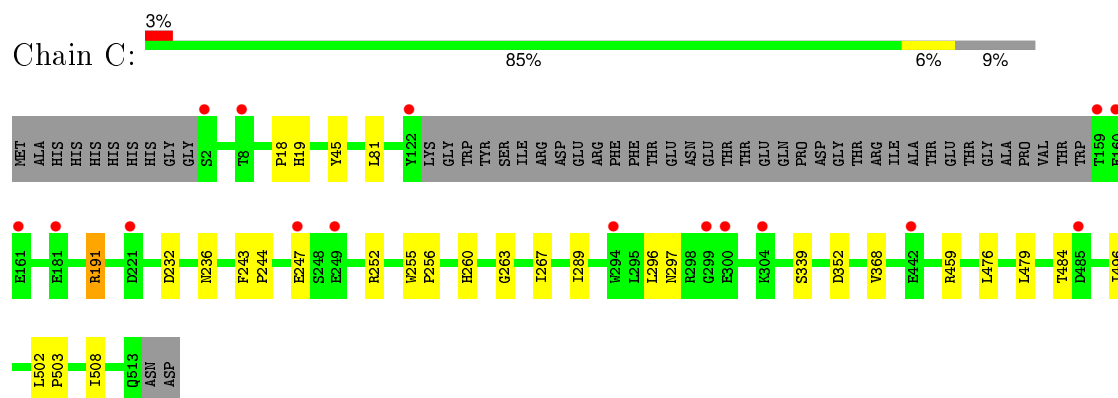
- Molecule 1: METHIONYL-TRNA SYNTHETASE



- Molecule 1: METHIONYL-TRNA SYNTHETASE



- Molecule 1: METHIONYL-TRNA SYNTHETASE





## 4 Data and refinement statistics

Property	Value	Source
Space group	C 1 2 1	Depositor
Cell constants a, b, c, $\alpha$ , $\beta$ , $\gamma$	155.95Å 138.91Å 123.31Å 90.00° 124.84° 90.00°	Depositor
Resolution (Å)	30.00 – 2.30 29.78 – 2.30	Depositor EDS
% Data completeness (in resolution range)	97.7 (30.00-2.30) 97.7 (29.78-2.30)	Depositor EDS
$R_{merge}$	0.09	Depositor
$R_{sym}$	(Not available)	Depositor
$\langle I/\sigma(I) \rangle$ <sup>1</sup>	2.86 (at 2.31Å)	Xtriage
Refinement program	REFMAC 5.5.0072	Depositor
R, $R_{free}$	0.218 , 0.249 0.214 , 0.244	Depositor DCC
$R_{free}$ test set	4670 reflections (5.27%)	DCC
Wilson B-factor (Å <sup>2</sup> )	26.2	Xtriage
Anisotropy	0.529	Xtriage
Bulk solvent $k_{sol}$ (e/Å <sup>3</sup> ), $B_{sol}$ (Å <sup>2</sup> )	0.37 , 34.7	EDS
Estimated twinning fraction	No twinning to report.	Xtriage
L-test for twinning <sup>2</sup>	$\langle  L  \rangle = 0.49$ , $\langle L^2 \rangle = 0.32$	Xtriage
Outliers	1 of 93305 reflections (0.001%)	Xtriage
$F_o, F_c$ correlation	0.93	EDS
Total number of atoms	12263	wwPDB-VP
Average B, all atoms (Å <sup>2</sup> )	23.0	wwPDB-VP

Xtriage's analysis on translational NCS is as follows: *The largest off-origin peak in the Patterson function is 4.26% of the height of the origin peak. No significant pseudotranslation is detected.*

<sup>1</sup>Intensities estimated from amplitudes.

<sup>2</sup>Theoretical values of  $\langle |L| \rangle$ ,  $\langle L^2 \rangle$  for acentric reflections are 0.5, 0.375 respectively for untwinned datasets, and 0.333, 0.2 for perfectly twinned datasets.

## 5 Model quality [i](#)

### 5.1 Standard geometry [i](#)

Bond lengths and bond angles in the following residue types are not validated in this section: ADN, 2HP, CXS

The Z score for a bond length (or angle) is the number of standard deviations the observed value is removed from the expected value. A bond length (or angle) with  $|Z| > 5$  is considered an outlier worth inspection. RMSZ is the root-mean-square of all Z scores of the bond lengths (or angles).

Mol	Chain	Bond lengths		Bond angles	
		RMSZ	# Z  >5	RMSZ	# Z  >5
1	A	0.32	0/4184	0.46	0/5697
1	B	0.32	0/3871	0.45	0/5266
1	C	0.32	0/3887	0.45	0/5289
All	All	0.32	0/11942	0.45	0/16252

There are no bond length outliers.

There are no bond angle outliers.

There are no chirality outliers.

There are no planarity outliers.

### 5.2 Too-close contacts [i](#)

In the following table, the Non-H and H(model) columns list the number of non-hydrogen atoms and hydrogen atoms in the chain respectively. The H(added) column lists the number of hydrogen atoms added and optimized by MolProbity. The Clashes column lists the number of clashes within the asymmetric unit, whereas Symm-Clashes lists symmetry related clashes.

Mol	Chain	Non-H	H(model)	H(added)	Clashes	Symm-Clashes
1	A	4076	0	3948	12	0
1	B	3773	0	3678	7	0
1	C	3789	0	3686	16	0
2	A	9	0	8	0	0
2	B	9	0	8	0	0
2	C	9	0	8	0	0
3	A	19	0	13	1	0
3	B	19	0	13	1	0
3	C	19	0	13	2	0
4	A	14	0	19	0	0

*Continued on next page...*

*Continued from previous page...*

Mol	Chain	Non-H	H(model)	H(added)	Clashes	Symm-Clashes
4	B	14	0	19	0	0
4	C	14	0	19	0	0
5	A	5	0	0	0	0
5	B	5	0	0	0	0
5	C	5	0	0	0	0
6	A	174	0	0	0	0
6	B	148	0	0	0	0
6	C	162	0	0	0	0
All	All	12263	0	11432	35	0

The all-atom clashscore is defined as the number of clashes found per 1000 atoms (including hydrogen atoms). The all-atom clashscore for this structure is 2.

All (35) close contacts within the same asymmetric unit are listed below, sorted by their clash magnitude.

Atom-1	Atom-2	Interatomic distance (Å)	Clash overlap (Å)
1:C:191:ARG:HG2	1:C:267:ILE:HD13	1.75	0.68
1:C:479:LEU:HD12	1:C:508:ILE:HD11	1.77	0.66
1:C:368:VAL:HG11	1:C:502:LEU:HD12	1.83	0.60
1:A:255:TRP:CD2	1:A:256:PRO:HA	2.42	0.55
1:A:123:LYS:HG2	1:A:160:GLU:HG2	1.92	0.51
1:A:368:VAL:HG21	1:A:455:LEU:HD11	1.93	0.50
1:C:260:HIS:HB2	1:C:289:ILE:HG13	1.93	0.50
1:B:260:HIS:HB2	1:B:289:ILE:HG13	1.93	0.49
1:B:255:TRP:CD2	1:B:256:PRO:HA	2.48	0.49
1:B:263:GLY:HA3	3:B:601:ADN:O2'	2.13	0.49
1:A:260:HIS:HB2	1:A:289:ILE:HG13	1.95	0.49
1:B:368:VAL:HG21	1:B:455:LEU:HD11	1.96	0.48
1:C:255:TRP:CD2	1:C:256:PRO:HA	2.49	0.47
1:C:263:GLY:HA3	3:C:601:ADN:O2'	2.16	0.46
1:A:255:TRP:CG	1:A:256:PRO:HA	2.52	0.45
1:C:459:ARG:HD3	1:C:496:ILE:HB	1.98	0.45
1:B:255:TRP:CG	1:B:256:PRO:HA	2.52	0.45
1:C:18:PRO:HB2	1:C:81:LEU:HD22	1.99	0.45
1:A:122:TYR:HH	1:A:133:PHE:HD2	1.64	0.43
1:C:247:GLU:HG3	1:C:252:ARG:HH21	1.84	0.42
1:A:263:GLY:HA3	3:A:601:ADN:O2'	2.19	0.42
1:C:476:LEU:HD13	1:C:508:ILE:HD13	2.01	0.42
1:C:502:LEU:HA	1:C:503:PRO:HD3	1.96	0.42
1:A:48:GLY:HA3	1:A:93:ILE:O	2.19	0.42
1:C:191:ARG:CG	1:C:267:ILE:HD13	2.46	0.41

*Continued on next page...*

*Continued from previous page...*

Atom-1	Atom-2	Interatomic distance (Å)	Clash overlap (Å)
1:A:458:VAL:HG12	1:A:480:LEU:HD11	2.03	0.41
1:C:255:TRP:CG	1:C:256:PRO:HA	2.56	0.41
1:B:18:PRO:HB2	1:B:81:LEU:HD22	2.02	0.41
1:C:19:HIS:HE1	3:C:601:ADN:N7	2.18	0.41
1:C:243:PHE:CG	1:C:244:PRO:HA	2.56	0.41
1:B:51:VAL:HG22	1:B:95:THR:OG1	2.20	0.41
1:A:18:PRO:HB2	1:A:81:LEU:HD22	2.01	0.41
1:A:51:VAL:HB	1:A:71:ALA:HB1	2.02	0.40
1:A:368:VAL:HG11	1:A:502:LEU:HD12	2.04	0.40
1:C:296:LEU:O	1:C:339:SER:HA	2.22	0.40

There are no symmetry-related clashes.

## 5.3 Torsion angles ⓘ

### 5.3.1 Protein backbone ⓘ

In the following table, the Percentiles column shows the percent Ramachandran outliers of the chain as a percentile score with respect to all X-ray entries followed by that with respect to entries of similar resolution.

The Analysed column shows the number of residues for which the backbone conformation was analysed, and the total number of residues.

Mol	Chain	Analysed	Favoured	Allowed	Outliers	Percentiles	
1	A	509/524 (97%)	505 (99%)	4 (1%)	0	100	100
1	B	470/524 (90%)	464 (99%)	6 (1%)	0	100	100
1	C	472/524 (90%)	467 (99%)	5 (1%)	0	100	100
All	All	1451/1572 (92%)	1436 (99%)	15 (1%)	0	100	100

There are no Ramachandran outliers to report.

### 5.3.2 Protein sidechains ⓘ

In the following table, the Percentiles column shows the percent sidechain outliers of the chain as a percentile score with respect to all X-ray entries followed by that with respect to entries of similar resolution.

The Analysed column shows the number of residues for which the sidechain conformation was analysed, and the total number of residues.

Mol	Chain	Analysed	Rotameric	Outliers	Percentiles	
1	A	426/436 (98%)	422 (99%)	4 (1%)	84	93
1	B	394/436 (90%)	392 (100%)	2 (0%)	92	97
1	C	396/436 (91%)	389 (98%)	7 (2%)	66	82
All	All	1216/1308 (93%)	1203 (99%)	13 (1%)	80	90

All (13) residues with a non-rotameric sidechain are listed below:

Mol	Chain	Res	Type
1	A	234	LEU
1	A	236	ASN
1	A	247	GLU
1	A	417	TRP
1	B	232	ASP
1	B	236	ASN
1	C	45	TYR
1	C	191	ARG
1	C	232	ASP
1	C	236	ASN
1	C	297	ASN
1	C	352	ASP
1	C	484	THR

Some sidechains can be flipped to improve hydrogen bonding and reduce clashes. All (2) such sidechains are listed below:

Mol	Chain	Res	Type
1	C	19	HIS
1	C	297	ASN

### 5.3.3 RNA ⓘ

There are no RNA molecules in this entry.

## 5.4 Non-standard residues in protein, DNA, RNA chains ⓘ

There are no non-standard protein/DNA/RNA residues in this entry.

## 5.5 Carbohydrates ⓘ

There are no carbohydrates in this entry.

## 5.6 Ligand geometry

12 ligands are modelled in this entry.

In the following table, the Counts columns list the number of bonds (or angles) for which Mogul statistics could be retrieved, the number of bonds (or angles) that are observed in the model and the number of bonds (or angles) that are defined in the chemical component dictionary. The Link column lists molecule types, if any, to which the group is linked. The Z score for a bond length (or angle) is the number of standard deviations the observed value is removed from the expected value. A bond length (or angle) with  $|Z| > 2$  is considered an outlier worth inspection. RMSZ is the root-mean-square of all Z scores of the bond lengths (or angles).

Mol	Type	Chain	Res	Link	Bond lengths			Bond angles		
					Counts	RMSZ	# $ Z  > 2$	Counts	RMSZ	# $ Z  > 2$
2	MET	A	600	-	5,8,8	0.28	0	3,9,9	0.20	0
3	ADN	A	601	-	16,21,21	1.16	1 (6%)	16,31,31	2.26	3 (18%)
4	CXS	A	602	-	13,14,14	0.68	0	15,18,18	1.18	2 (13%)
5	2HP	A	603	-	4,4,4	1.01	0	6,6,6	0.73	0
2	MET	B	600	-	5,8,8	0.30	0	3,9,9	0.15	0
3	ADN	B	601	-	16,21,21	1.14	1 (6%)	16,31,31	2.29	4 (25%)
4	CXS	B	602	-	13,14,14	0.68	0	15,18,18	1.29	2 (13%)
5	2HP	B	603	-	4,4,4	1.03	0	6,6,6	0.65	0
2	MET	C	600	-	5,8,8	0.28	0	3,9,9	0.18	0
3	ADN	C	601	-	16,21,21	1.16	1 (6%)	16,31,31	2.24	3 (18%)
4	CXS	C	602	-	13,14,14	0.69	0	15,18,18	1.48	2 (13%)
5	2HP	C	603	-	4,4,4	1.00	0	6,6,6	0.62	0

In the following table, the Chirals column lists the number of chiral outliers, the number of chiral centers analysed, the number of these observed in the model and the number defined in the chemical component dictionary. Similar counts are reported in the Torsion and Rings columns. '-' means no outliers of that kind were identified.

Mol	Type	Chain	Res	Link	Chirals	Torsions	Rings
2	MET	A	600	-	-	0/4/8/8	0/0/0/0
3	ADN	A	601	-	-	0/2/22/22	0/3/3/3
4	CXS	A	602	-	-	0/8/16/16	0/1/1/1
5	2HP	A	603	-	-	0/0/0/0	0/0/0/0
2	MET	B	600	-	-	0/4/8/8	0/0/0/0
3	ADN	B	601	-	-	0/2/22/22	0/3/3/3
4	CXS	B	602	-	-	0/8/16/16	0/1/1/1
5	2HP	B	603	-	-	0/0/0/0	0/0/0/0
2	MET	C	600	-	-	0/4/8/8	0/0/0/0
3	ADN	C	601	-	-	0/2/22/22	0/3/3/3
4	CXS	C	602	-	-	0/8/16/16	0/1/1/1

*Continued on next page...*

*Continued from previous page...*

Mol	Type	Chain	Res	Link	Chirals	Torsions	Rings
5	2HP	C	603	-	-	0/0/0/0	0/0/0/0

All (3) bond length outliers are listed below:

Mol	Chain	Res	Type	Atoms	Z	Observed(Å)	Ideal(Å)
3	A	601	ADN	C5-C4	3.25	1.47	1.40
3	B	601	ADN	C5-C4	3.25	1.47	1.40
3	C	601	ADN	C5-C4	3.26	1.47	1.40

All (16) bond angle outliers are listed below:

Mol	Chain	Res	Type	Atoms	Z	Observed(°)	Ideal(°)
3	B	601	ADN	N3-C2-N1	-7.29	123.32	128.89
3	A	601	ADN	N3-C2-N1	-7.25	123.35	128.89
3	C	601	ADN	N3-C2-N1	-7.10	123.46	128.89
3	C	601	ADN	C4-C5-N7	-3.24	106.49	109.48
3	A	601	ADN	C4-C5-N7	-3.24	106.50	109.48
3	B	601	ADN	C4-C5-N7	-3.22	106.52	109.48
3	B	601	ADN	C2'-C1'-N9	-2.35	110.71	114.29
3	C	601	ADN	C2'-C1'-N9	-2.21	110.91	114.29
3	A	601	ADN	O4'-C1'-N9	2.06	112.41	108.10
3	B	601	ADN	O4'-C1'-N9	2.07	112.43	108.10
4	A	602	CXS	O1-S-C1	2.64	109.16	106.91
4	B	602	CXS	O2-S-C1	2.65	109.16	106.91
4	B	602	CXS	O1-S-C1	2.83	109.32	106.91
4	A	602	CXS	O2-S-C1	2.88	109.36	106.91
4	C	602	CXS	O2-S-C1	3.00	109.46	106.91
4	C	602	CXS	O1-S-C1	3.78	110.13	106.91

There are no chirality outliers.

There are no torsion outliers.

There are no ring outliers.

3 monomers are involved in 4 short contacts:

Mol	Chain	Res	Type	Clashes	Symm-Clashes
3	A	601	ADN	1	0
3	B	601	ADN	1	0
3	C	601	ADN	2	0

## 5.7 Other polymers

There are no such residues in this entry.

## 5.8 Polymer linkage issues

There are no chain breaks in this entry.



## 6 Fit of model and data

### 6.1 Protein, DNA and RNA chains

In the following table, the column labelled ‘#RSRZ> 2’ contains the number (and percentage) of RSRZ outliers, followed by percent RSRZ outliers for the chain as percentile scores relative to all X-ray entries and entries of similar resolution. The OWAB column contains the minimum, median, 95<sup>th</sup> percentile and maximum values of the occupancy-weighted average B-factor per residue. The column labelled ‘Q< 0.9’ lists the number of (and percentage) of residues with an average occupancy less than 0.9.

Mol	Chain	Analysed	<RSRZ>	#RSRZ>2		OWAB(Å <sup>2</sup> )	Q<0.9
1	A	511/524 (97%)	0.31	29 (5%)	27 36	15, 23, 40, 48	0
1	B	474/524 (90%)	0.41	30 (6%)	23 31	13, 23, 42, 51	0
1	C	476/524 (90%)	0.10	16 (3%)	49 58	13, 20, 30, 41	0
All	All	1461/1572 (92%)	0.28	75 (5%)	32 41	13, 22, 38, 51	0

All (75) RSRZ outliers are listed below:

Mol	Chain	Res	Type	RSRZ
1	B	305	SER	7.3
1	B	306	ILE	6.3
1	A	439	ASP	5.8
1	C	159	THR	5.7
1	B	302	MET	5.7
1	B	304	LYS	5.4
1	B	303	SER	5.4
1	C	122	TYR	5.2
1	B	300	GLU	4.9
1	B	307	GLY	4.5
1	C	160	GLU	4.4
1	B	439	ASP	4.3
1	A	440	ALA	4.1
1	A	441	ALA	3.6
1	A	485	ASP	3.5
1	B	485	ASP	3.4
1	A	304	LYS	3.4
1	A	438	SER	3.3
1	A	2	SER	3.2
1	C	300	GLU	3.2
1	C	294	TRP	3.2
1	B	294	TRP	3.1
1	C	247	GLU	3.1

*Continued on next page...*

*Continued from previous page...*

Mol	Chain	Res	Type	RSRZ
1	A	249	GLU	3.0
1	B	299	GLY	2.9
1	C	161	GLU	2.9
1	B	309	VAL	2.8
1	A	299	GLY	2.8
1	B	308	ASN	2.8
1	A	247	GLU	2.8
1	B	249	GLU	2.8
1	A	234	LEU	2.7
1	B	247	GLU	2.7
1	B	507	GLY	2.7
1	A	294	TRP	2.7
1	A	370	LYS	2.7
1	A	437	LYS	2.7
1	A	506	SER	2.7
1	B	512	TYR	2.7
1	A	501	SER	2.6
1	C	299	GLY	2.6
1	A	300	GLU	2.6
1	B	65	ILE	2.6
1	A	442	GLU	2.6
1	A	233	ALA	2.6
1	A	433	TRP	2.6
1	C	221	ASP	2.5
1	B	484	THR	2.5
1	C	2	SER	2.5
1	C	304	LYS	2.5
1	A	455	LEU	2.5
1	A	305	SER	2.5
1	B	252	ARG	2.5
1	A	221	ASP	2.4
1	C	181	GLU	2.4
1	A	507	GLY	2.4
1	A	511	ARG	2.4
1	C	485	ASP	2.4
1	B	122	TYR	2.4
1	B	442	GLU	2.4
1	A	458	VAL	2.3
1	B	504	ALA	2.3
1	C	249	GLU	2.3
1	B	499	GLY	2.3
1	B	62	LYS	2.2

*Continued on next page...*

*Continued from previous page...*

Mol	Chain	Res	Type	RSRZ
1	C	8	THR	2.2
1	B	301	LYS	2.2
1	B	234	LEU	2.2
1	B	8	THR	2.1
1	C	442	GLU	2.1
1	A	3	GLU	2.1
1	A	399	ARG	2.1
1	A	357	LEU	2.1
1	B	511	ARG	2.0
1	B	347	GLY	2.0

## 6.2 Non-standard residues in protein, DNA, RNA chains [i](#)

There are no non-standard protein/DNA/RNA residues in this entry.

## 6.3 Carbohydrates [i](#)

There are no carbohydrates in this entry.

## 6.4 Ligands [i](#)

In the following table, the Atoms column lists the number of modelled atoms in the group and the number defined in the chemical component dictionary. LLDF column lists the quality of electron density of the group with respect to its neighbouring residues in protein, DNA or RNA chains. The B-factors column lists the minimum, median, 95<sup>th</sup> percentile and maximum values of B factors of atoms in the group. The column labelled 'Q< 0.9' lists the number of atoms with occupancy less than 0.9.

Mol	Type	Chain	Res	Atoms	RSCC	RSR	LLDF	B-factors(Å <sup>2</sup> )	Q<0.9
4	CXS	A	602	14/14	0.87	0.20	2.76	34,35,36,36	0
3	ADN	C	601	19/19	0.80	0.21	1.42	45,46,46,46	0
3	ADN	A	601	19/19	0.84	0.20	1.16	42,42,43,43	0
4	CXS	C	602	14/14	0.89	0.18	1.09	36,36,37,37	0
5	2HP	C	603	5/5	0.97	0.14	0.64	19,19,19,20	0
4	CXS	B	602	14/14	0.93	0.15	0.62	23,23,24,24	0
2	MET	A	600	9/9	0.94	0.19	-0.03	12,13,14,14	0
3	ADN	B	601	19/19	0.89	0.15	-0.28	36,37,37,37	0
2	MET	B	600	9/9	0.94	0.15	-0.35	14,16,16,16	0
2	MET	C	600	9/9	0.95	0.15	-0.47	15,17,17,17	0
5	2HP	B	603	5/5	0.97	0.13	-0.61	22,22,23,23	0
5	2HP	A	603	5/5	0.98	0.10	-0.71	25,25,25,26	0

## 6.5 Other polymers [i](#)

There are no such residues in this entry.