



Full wwPDB X-ray Structure Validation Report ⓘ

Feb 1, 2016 – 06:28 AM GMT

PDB ID : 2X7F
Title : CRYSTAL STRUCTURE OF THE KINASE DOMAIN OF HUMAN TRAF2-
AND NCK-INTERACTING KINASE WITH WEE1CHK1 INHIBITOR
Authors : Vollmar, M.; Alfano, I.; Shrestha, B.; Bray, J.; Muniz, J.R.C.; Roos, A.;
Filippakopoulos, P.; Burgess-Brown, N.; Ugochukwu, E.; Gileadi, O.; Phillips,
C.; Mahajan, P.; Pike, A.C.W.; Fedorov, O.; Chaikuad, A.; Von Delft, F.;
Bountra, C.; Arrowsmith, C.H.; Weigelt, J.; Edwards, A.; Knapp, S.
Deposited on : 2010-02-26
Resolution : 2.80 Å(reported)

This is a Full wwPDB X-ray Structure Validation Report for a publicly released PDB entry.
We welcome your comments at validation@mail.wwpdb.org
A user guide is available at
<http://wwpdb.org/validation/2016/XrayValidationReportHelp>
with specific help available everywhere you see the ⓘ symbol.

The following versions of software and data (see [references ⓘ](#)) were used in the production of this report:

MolProbity : 4.02b-467
Mogul : 1.7 (RC4), CSD as536be (2015)
Xtriage (Phenix) : 1.9-1692
EDS : rb-20026688
Percentile statistics : 20151230.v01 (using entries in the PDB archive December 30th 2015)
Refmac : 5.8.0135
CCP4 : 6.5.0
Ideal geometry (proteins) : Engh & Huber (2001)
Ideal geometry (DNA, RNA) : Parkinson et al. (1996)
Validation Pipeline (wwPDB-VP) : trunk26865

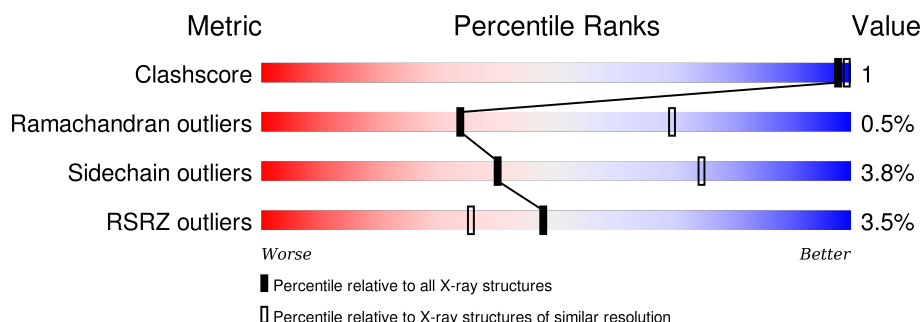
1 Overall quality at a glance ⓘ

The following experimental techniques were used to determine the structure:

X-RAY DIFFRACTION

The reported resolution of this entry is 2.80 Å.

Percentile scores (ranging between 0-100) for global validation metrics of the entry are shown in the following graphic. The table shows the number of entries on which the scores are based.



Metric	Whole archive (#Entries)	Similar resolution (#Entries, resolution range(Å))
Clashscore	102246	2827 (2.80-2.80)
Ramachandran outliers	100387	2782 (2.80-2.80)
Sidechain outliers	100360	2784 (2.80-2.80)
RSRZ outliers	91569	2404 (2.80-2.80)

The table below summarises the geometric issues observed across the polymeric chains and their fit to the electron density. The red, orange, yellow and green segments on the lower bar indicate the fraction of residues that contain outliers for ≥ 3 , 2, 1 and 0 types of geometric quality criteria. A grey segment represents the fraction of residues that are not modelled. The numeric value for each fraction is indicated below the corresponding segment, with a dot representing fractions $\leq 5\%$. The upper red bar (where present) indicates the fraction of residues that have poor fit to the electron density. The numeric value is given above the bar.

Mol	Chain	Length	Quality of chain
1	A	326	<div> <div>3%</div> <div>82%</div> <div>15%</div> </div>
1	B	326	<div> <div>%</div> <div>80%</div> <div>8%</div> <div>12%</div> </div>
1	C	326	<div> <div>2%</div> <div>82%</div> <div>5%</div> <div>13%</div> </div>
1	D	326	<div> <div>4%</div> <div>71%</div> <div>28%</div> </div>
1	E	326	<div> <div>4%</div> <div>76%</div> <div>23%</div> </div>

2 Entry composition

There are 4 unique types of molecules in this entry. The entry contains 9367 atoms, of which 0 are hydrogens and 0 are deuteriums.

In the tables below, the ZeroOcc column contains the number of atoms modelled with zero occupancy, the AltConf column contains the number of residues with at least one atom in alternate conformation and the Trace column contains the number of residues modelled with at most 2 atoms.

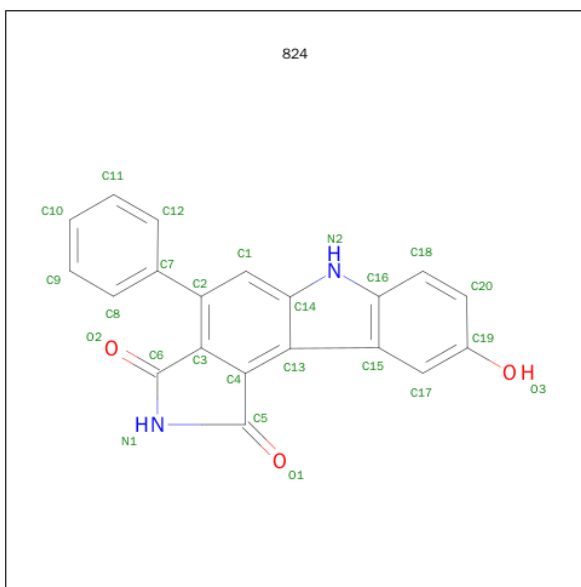
- Molecule 1 is a protein called TRAF2 AND NCK-INTERACTING PROTEIN KINASE.

Mol	Chain	Residues	Atoms					ZeroOcc	AltConf	Trace
1	A	276	Total	C	N	O	S	0	0	0
			1924	1234	333	346	11			
1	B	288	Total	C	N	O	S	0	2	0
			2205	1408	387	395	15			
1	C	285	Total	C	N	O	S	0	0	0
			2069	1329	357	370	13			
1	D	236	Total	C	N	O	S	0	0	0
			1540	971	276	285	8			
1	E	251	Total	C	N	O	S	0	0	0
			1482	917	280	282	3			

There are 5 discrepancies between the modelled and reference sequences:

Chain	Residue	Modelled	Actual	Comment	Reference
A	0	SER	-	EXPRESSION TAG	UNP Q9UKE5
B	0	SER	-	EXPRESSION TAG	UNP Q9UKE5
C	0	SER	-	EXPRESSION TAG	UNP Q9UKE5
D	0	SER	-	EXPRESSION TAG	UNP Q9UKE5
E	0	SER	-	EXPRESSION TAG	UNP Q9UKE5

- Molecule 2 is 9-HYDROXY-4-PHENYLPYRROLO[3,4-C]CARBAZOLE-1,3(2H,6H)-DIONE (three-letter code: 824) (formula: C₂₀H₁₂N₂O₃).



Mol	Chain	Residues	Atoms				ZeroOcc	AltConf
2	A	1	Total	C	N	O	0	0
			25	20	2	3		
2	B	1	Total	C	N	O	0	0
			25	20	2	3		
2	C	1	Total	C	N	O	0	0
			25	20	2	3		
2	D	1	Total	C	N	O	0	0
			25	20	2	3		
2	E	1	Total	C	N	O	0	0
			25	20	2	3		

- Molecule 3 is SODIUM ION (three-letter code: NA) (formula: Na).

Mol	Chain	Residues	Atoms		ZeroOcc	AltConf
3	B	1	Total	Na	0	0
			1	1		
3	A	1	Total	Na	0	0
			1	1		
3	D	1	Total	Na	0	0
			1	1		
3	C	1	Total	Na	0	0
			1	1		
3	E	1	Total	Na	0	0
			1	1		

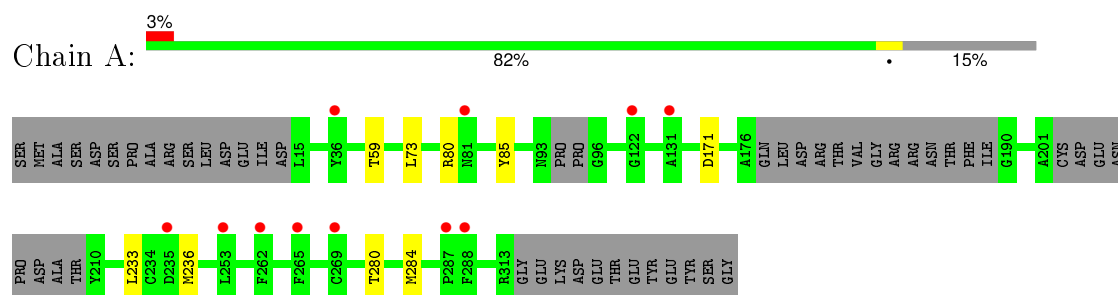
- Molecule 4 is water.

Mol	Chain	Residues	Atoms		ZeroOcc	AltConf
4	B	14	Total 14	O 14	0	0
4	C	3	Total 3	O 3	0	0

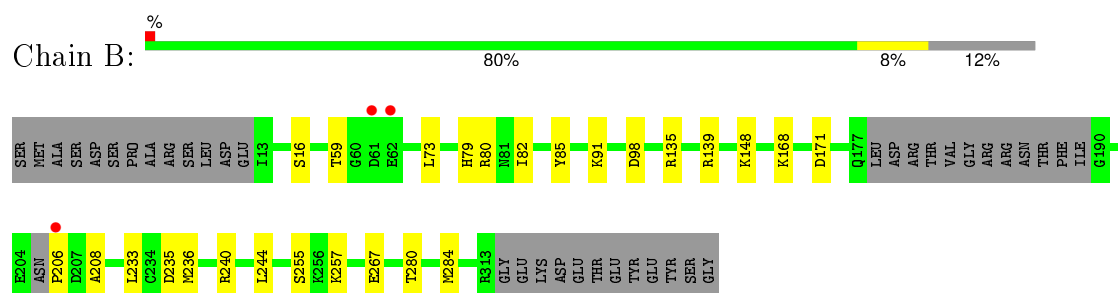
3 Residue-property plots [i](#)

These plots are drawn for all protein, RNA and DNA chains in the entry. The first graphic for a chain summarises the proportions of errors displayed in the second graphic. The second graphic shows the sequence view annotated by issues in geometry and electron density. Residues are color-coded according to the number of geometric quality criteria for which they contain at least one outlier: green = 0, yellow = 1, orange = 2 and red = 3 or more. A red dot above a residue indicates a poor fit to the electron density ($RSRZ > 2$). Stretches of 2 or more consecutive residues without any outlier are shown as a green connector. Residues present in the sample, but not in the model, are shown in grey.

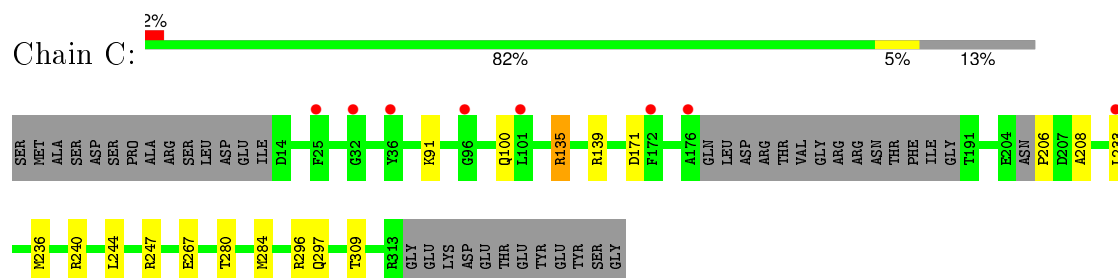
• Molecule 1: TRAF2 AND NCK-INTERACTING PROTEIN KINASE



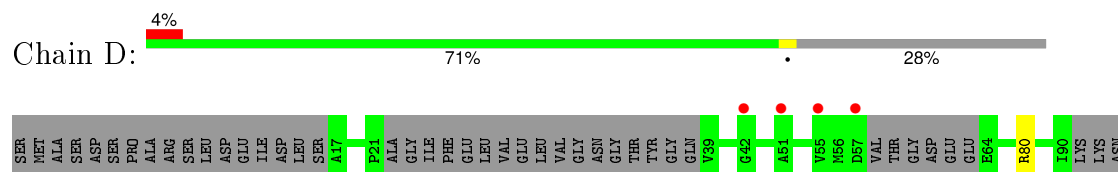
• Molecule 1: TRAF2 AND NCK-INTERACTING PROTEIN KINASE

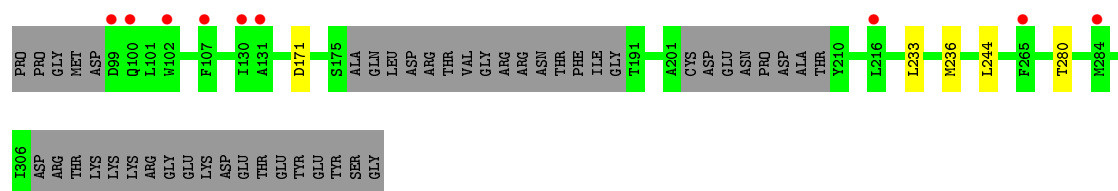


• Molecule 1: TRAF2 AND NCK-INTERACTING PROTEIN KINASE

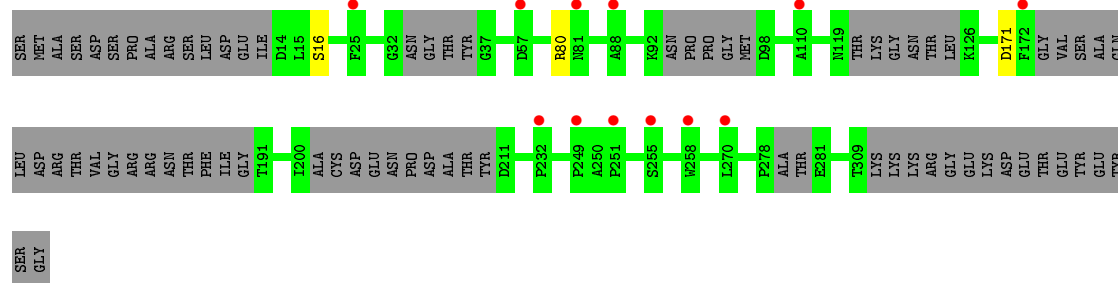
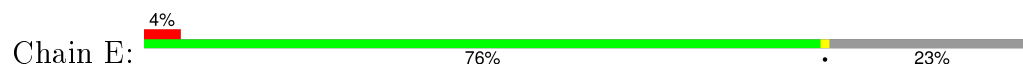


• Molecule 1: TRAF2 AND NCK-INTERACTING PROTEIN KINASE





● Molecule 1: TRAF2 AND NCK-INTERACTING PROTEIN KINASE



4 Data and refinement statistics

Property	Value	Source
Space group	P 1 21 1	Depositor
Cell constants a, b, c, α , β , γ	52.97Å 79.07Å 214.16Å 90.00° 91.87° 90.00°	Depositor
Resolution (Å)	44.32 – 2.80 44.32 – 2.79	Depositor EDS
% Data completeness (in resolution range)	(Not available) (44.32-2.80) 99.8 (44.32-2.79)	Depositor EDS
R_{merge}	0.08	Depositor
R_{sym}	(Not available)	Depositor
$\langle I/\sigma(I) \rangle$ ¹	2.00 (at 2.81Å)	Xtriage
Refinement program	BUSTER-TNT 2.8.0	Depositor
R, R_{free}	0.209 , 0.229 0.231 , (Not available)	Depositor DCC
R_{free} test set	No test flags present.	DCC
Wilson B-factor (Å ²)	71.0	Xtriage
Anisotropy	0.177	Xtriage
Bulk solvent k_{sol} (e/Å ³), B_{sol} (Å ²)	0.27 , 79.6	EDS
Estimated twinning fraction	0.037 for h,-k,-l	Xtriage
L-test for twinning ²	$\langle L \rangle = 0.48$, $\langle L^2 \rangle = 0.31$	Xtriage
Outliers	1 of 44023 reflections (0.002%)	Xtriage
F_o, F_c correlation	0.92	EDS
Total number of atoms	9367	wwPDB-VP
Average B, all atoms (Å ²)	94.0	wwPDB-VP

Xtriage's analysis on translational NCS is as follows: *The largest off-origin peak in the Patterson function is 4.28% of the height of the origin peak. No significant pseudotranslation is detected.*

¹Intensities estimated from amplitudes.

²Theoretical values of $\langle |L| \rangle$, $\langle L^2 \rangle$ for acentric reflections are 0.5, 0.375 respectively for untwinned datasets, and 0.333, 0.2 for perfectly twinned datasets.

5 Model quality [i](#)

5.1 Standard geometry [i](#)

Bond lengths and bond angles in the following residue types are not validated in this section: NA, 824

The Z score for a bond length (or angle) is the number of standard deviations the observed value is removed from the expected value. A bond length (or angle) with $|Z| > 5$ is considered an outlier worth inspection. RMSZ is the root-mean-square of all Z scores of the bond lengths (or angles).

Mol	Chain	Bond lengths		Bond angles	
		RMSZ	$\# Z > 5$	RMSZ	$\# Z > 5$
1	A	0.43	0/1967	0.64	0/2689
1	B	0.51	0/2265	0.68	0/3071
1	C	0.46	0/2118	0.66	0/2891
1	D	0.42	0/1574	0.62	0/2163
1	E	0.44	0/1507	0.63	0/2082
All	All	0.46	0/9431	0.65	0/12896

There are no bond length outliers.

There are no bond angle outliers.

There are no chirality outliers.

There are no planarity outliers.

5.2 Too-close contacts [i](#)

In the following table, the Non-H and H(model) columns list the number of non-hydrogen atoms and hydrogen atoms in the chain respectively. The H(added) column lists the number of hydrogen atoms added and optimized by MolProbity. The Clashes column lists the number of clashes within the asymmetric unit, whereas Symm-Clashes lists symmetry related clashes.

Mol	Chain	Non-H	H(model)	H(added)	Clashes	Symm-Clashes
1	A	1924	0	1638	2	0
1	B	2205	0	2108	8	0
1	C	2069	0	1875	7	0
1	D	1540	0	1162	1	0
1	E	1482	0	957	0	0
2	A	25	0	12	0	0
2	B	25	0	12	0	0
2	C	25	0	12	0	0

Continued on next page...

Continued from previous page...

Mol	Chain	Non-H	H(model)	H(added)	Clashes	Symm-Clashes
2	D	25	0	12	0	0
2	E	25	0	12	0	0
3	A	1	0	0	0	0
3	B	1	0	0	0	0
3	C	1	0	0	0	0
3	D	1	0	0	0	0
3	E	1	0	0	0	0
4	B	14	0	0	1	0
4	C	3	0	0	1	0
All	All	9367	0	7800	18	0

The all-atom clashscore is defined as the number of clashes found per 1000 atoms (including hydrogen atoms). The all-atom clashscore for this structure is 1.

All (18) close contacts within the same asymmetric unit are listed below, sorted by their clash magnitude.

Atom-1	Atom-2	Interatomic distance (Å)	Clash overlap (Å)
1:D:233:LEU:HB3	1:D:236:MET:HE2	1.78	0.65
1:A:233:LEU:HB3	1:A:236:MET:HE2	1.81	0.63
1:C:233:LEU:HB3	1:C:236:MET:HE2	1.84	0.59
1:C:247:ARG:NH1	4:C:2003:HOH:O	2.37	0.57
1:B:233:LEU:HB3	1:B:236:MET:HE2	1.86	0.57
1:C:206:PRO:HA	1:C:208:ALA:H	1.73	0.53
1:B:206:PRO:HA	1:B:208:ALA:H	1.74	0.52
1:B:79:HIS:HB3	1:B:82:ILE:HD12	1.93	0.51
1:C:135:ARG:HD3	1:C:139:ARG:CZ	2.44	0.47
1:B:135:ARG:HD3	1:B:139:ARG:CZ	2.48	0.43
1:B:255:SER:OG	1:B:257:LYS:HG2	2.19	0.42
1:B:206:PRO:HA	1:B:208:ALA:N	2.35	0.42
1:C:206:PRO:HA	1:C:208:ALA:N	2.36	0.41
1:B:73:LEU:HB3	1:B:85:TYR:HB2	2.02	0.41
1:A:73:LEU:HB3	1:A:85:TYR:HB2	2.04	0.40
1:B:168:LYS:NZ	4:B:2008:HOH:O	2.53	0.40
1:C:91:LYS:HB3	1:C:100:GLN:HB2	2.03	0.40
1:C:233:LEU:HB3	1:C:236:MET:CE	2.51	0.40

There are no symmetry-related clashes.

5.3 Torsion angles

5.3.1 Protein backbone

In the following table, the Percentiles column shows the percent Ramachandran outliers of the chain as a percentile score with respect to all X-ray entries followed by that with respect to entries of similar resolution.

The Analysed column shows the number of residues for which the backbone conformation was analysed, and the total number of residues.

Mol	Chain	Analysed	Favoured	Allowed	Outliers	Percentiles	
1	A	268/326 (82%)	255 (95%)	12 (4%)	1 (0%)	39	74
1	B	284/326 (87%)	275 (97%)	7 (2%)	2 (1%)	26	62
1	C	279/326 (86%)	271 (97%)	7 (2%)	1 (0%)	39	74
1	D	224/326 (69%)	215 (96%)	8 (4%)	1 (0%)	39	74
1	E	237/326 (73%)	227 (96%)	8 (3%)	2 (1%)	24	58
All	All	1292/1630 (79%)	1243 (96%)	42 (3%)	7 (0%)	34	69

All (7) Ramachandran outliers are listed below:

Mol	Chain	Res	Type
1	C	171	ASP
1	D	171	ASP
1	E	171	ASP
1	A	171	ASP
1	B	171	ASP
1	E	16	SER
1	B	16	SER

5.3.2 Protein sidechains

In the following table, the Percentiles column shows the percent sidechain outliers of the chain as a percentile score with respect to all X-ray entries followed by that with respect to entries of similar resolution.

The Analysed column shows the number of residues for which the sidechain conformation was analysed, and the total number of residues.

Mol	Chain	Analysed	Rotameric	Outliers	Percentiles	
1	A	153/284 (54%)	149 (97%)	4 (3%)	54	86
1	B	219/284 (77%)	208 (95%)	11 (5%)	30	64

Continued on next page...

Continued from previous page...

Mol	Chain	Analysed	Rotameric	Outliers	Percentiles	
1	C	186/284 (66%)	177 (95%)	9 (5%)	31	66
1	D	105/284 (37%)	102 (97%)	3 (3%)	50	83
1	E	69/284 (24%)	68 (99%)	1 (1%)	74	94
All	All	732/1420 (52%)	704 (96%)	28 (4%)	40	74

All (28) residues with a non-rotameric sidechain are listed below:

Mol	Chain	Res	Type
1	A	59	THR
1	A	80	ARG
1	A	280	THR
1	A	284	MET
1	B	59	THR
1	B	80	ARG
1	B	91	LYS
1	B	98	ASP
1	B	148	LYS
1	B	235	ASP
1	B	240	ARG
1	B	244	LEU
1	B	267	GLU
1	B	280	THR
1	B	284	MET
1	C	135	ARG
1	C	240	ARG
1	C	244	LEU
1	C	267	GLU
1	C	280	THR
1	C	284	MET
1	C	296	ARG
1	C	297	GLN
1	C	309	THR
1	D	80	ARG
1	D	244	LEU
1	D	280	THR
1	E	80	ARG

Some sidechains can be flipped to improve hydrogen bonding and reduce clashes. There are no such sidechains identified.

5.3.3 RNA ⓘ

There are no RNA molecules in this entry.

5.4 Non-standard residues in protein, DNA, RNA chains ⓘ

There are no non-standard protein/DNA/RNA residues in this entry.

5.5 Carbohydrates ⓘ

There are no carbohydrates in this entry.

5.6 Ligand geometry ⓘ

Of 10 ligands modelled in this entry, 5 are monoatomic - leaving 5 for Mogul analysis.

In the following table, the Counts columns list the number of bonds (or angles) for which Mogul statistics could be retrieved, the number of bonds (or angles) that are observed in the model and the number of bonds (or angles) that are defined in the chemical component dictionary. The Link column lists molecule types, if any, to which the group is linked. The Z score for a bond length (or angle) is the number of standard deviations the observed value is removed from the expected value. A bond length (or angle) with $|Z| > 2$ is considered an outlier worth inspection. RMSZ is the root-mean-square of all Z scores of the bond lengths (or angles).

Mol	Type	Chain	Res	Link	Bond lengths			Bond angles		
					Counts	RMSZ	$\# Z > 2$	Counts	RMSZ	$\# Z > 2$
2	824	A	500	-	26,29,29	3.54	14 (53%)	29,44,44	3.67	14 (48%)
2	824	B	500	-	26,29,29	3.63	16 (61%)	29,44,44	4.28	16 (55%)
2	824	C	500	-	26,29,29	3.54	14 (53%)	29,44,44	3.61	12 (41%)
2	824	D	500	-	26,29,29	3.43	14 (53%)	29,44,44	4.11	15 (51%)
2	824	E	500	-	26,29,29	3.53	15 (57%)	29,44,44	3.66	13 (44%)

In the following table, the Chirals column lists the number of chiral outliers, the number of chiral centers analysed, the number of these observed in the model and the number defined in the chemical component dictionary. Similar counts are reported in the Torsion and Rings columns. '-' means no outliers of that kind were identified.

Mol	Type	Chain	Res	Link	Chirals	Torsions	Rings
2	824	A	500	-	-	0/4/4/4	0/5/5/5
2	824	B	500	-	-	0/4/4/4	0/5/5/5
2	824	C	500	-	-	0/4/4/4	0/5/5/5
2	824	D	500	-	-	0/4/4/4	0/5/5/5

Continued on next page...

Continued from previous page...

Mol	Type	Chain	Res	Link	Chirals	Torsions	Rings
2	824	E	500	-	-	0/4/4/4	0/5/5/5

All (73) bond length outliers are listed below:

Mol	Chain	Res	Type	Atoms	Z	Observed(Å)	Ideal(Å)
2	B	500	824	O1-C5	-7.05	1.07	1.24
2	C	500	824	O1-C5	-6.36	1.09	1.24
2	A	500	824	O1-C5	-6.09	1.10	1.24
2	E	500	824	O1-C5	-5.65	1.11	1.24
2	D	500	824	C2-C7	-5.21	1.40	1.49
2	D	500	824	O1-C5	-5.07	1.12	1.24
2	E	500	824	C2-C7	-4.90	1.40	1.49
2	A	500	824	C2-C7	-4.85	1.40	1.49
2	B	500	824	C5-C4	-4.48	1.33	1.42
2	A	500	824	O2-C6	-4.47	1.14	1.24
2	B	500	824	O2-C6	-4.46	1.14	1.24
2	C	500	824	O2-C6	-4.31	1.14	1.24
2	D	500	824	O2-C6	-4.28	1.14	1.24
2	B	500	824	C4-C13	-4.16	1.34	1.42
2	E	500	824	O2-C6	-4.08	1.15	1.24
2	E	500	824	C5-C4	-4.07	1.33	1.42
2	C	500	824	C5-C4	-4.04	1.34	1.42
2	D	500	824	C5-C4	-3.97	1.34	1.42
2	A	500	824	C5-C4	-3.94	1.34	1.42
2	C	500	824	C2-C7	-3.93	1.42	1.49
2	A	500	824	C1-C14	-3.70	1.36	1.41
2	D	500	824	C6-C3	-3.63	1.34	1.42
2	B	500	824	C2-C7	-3.54	1.43	1.49
2	C	500	824	C6-C3	-3.41	1.35	1.42
2	C	500	824	C4-C13	-3.35	1.35	1.42
2	A	500	824	C6-C3	-3.15	1.36	1.42
2	E	500	824	C6-C3	-2.99	1.36	1.42
2	D	500	824	C1-C14	-2.98	1.37	1.41
2	B	500	824	C1-C14	-2.88	1.37	1.41
2	B	500	824	C20-C19	-2.81	1.33	1.38
2	B	500	824	C6-C3	-2.80	1.36	1.42
2	C	500	824	C1-C14	-2.49	1.38	1.41
2	E	500	824	O3-C19	2.16	1.42	1.37
2	B	500	824	C18-C20	2.28	1.41	1.36
2	E	500	824	C1-C2	2.29	1.45	1.37
2	D	500	824	C18-C20	2.42	1.41	1.36
2	A	500	824	C1-C2	2.47	1.46	1.37

Continued on next page...

Continued from previous page...

Mol	Chain	Res	Type	Atoms	Z	Observed(Å)	Ideal(Å)
2	B	500	824	C1-C2	2.49	1.46	1.37
2	A	500	824	C18-C20	2.53	1.41	1.36
2	D	500	824	C1-C2	2.66	1.46	1.37
2	B	500	824	C11-C12	2.79	1.44	1.38
2	D	500	824	C11-C12	2.90	1.44	1.38
2	C	500	824	C18-C20	3.07	1.43	1.36
2	E	500	824	C18-C20	3.32	1.43	1.36
2	D	500	824	C2-C3	3.36	1.48	1.43
2	A	500	824	C18-C16	3.49	1.48	1.41
2	E	500	824	C11-C12	3.51	1.46	1.38
2	A	500	824	C11-C12	3.62	1.46	1.38
2	E	500	824	C2-C3	3.65	1.49	1.43
2	E	500	824	C18-C16	3.70	1.48	1.41
2	B	500	824	C12-C7	3.70	1.47	1.39
2	C	500	824	C11-C12	3.78	1.46	1.38
2	B	500	824	C18-C16	4.07	1.49	1.41
2	C	500	824	C18-C16	4.30	1.49	1.41
2	A	500	824	C15-C16	4.46	1.54	1.42
2	C	500	824	C17-C15	4.49	1.50	1.41
2	D	500	824	C12-C7	4.52	1.49	1.39
2	B	500	824	C17-C15	4.52	1.50	1.41
2	E	500	824	C17-C15	4.54	1.50	1.41
2	D	500	824	C17-C15	4.70	1.50	1.41
2	E	500	824	C15-C16	4.74	1.55	1.42
2	D	500	824	C15-C16	4.87	1.55	1.42
2	E	500	824	C12-C7	5.02	1.50	1.39
2	A	500	824	C17-C15	5.16	1.51	1.41
2	C	500	824	C15-C16	5.18	1.56	1.42
2	A	500	824	C12-C7	5.24	1.50	1.39
2	C	500	824	C12-C7	5.27	1.50	1.39
2	B	500	824	C15-C16	5.47	1.57	1.42
2	C	500	824	C17-C19	8.39	1.53	1.37
2	D	500	824	C17-C19	8.56	1.53	1.37
2	A	500	824	C17-C19	8.67	1.54	1.37
2	E	500	824	C17-C19	8.95	1.54	1.37
2	B	500	824	C17-C19	9.23	1.55	1.37

All (70) bond angle outliers are listed below:

Mol	Chain	Res	Type	Atoms	Z	Observed(°)	Ideal(°)
2	B	500	824	C19-C17-C15	-16.68	110.49	120.60
2	D	500	824	C19-C17-C15	-16.01	110.90	120.60

Continued on next page...

Continued from previous page...

Mol	Chain	Res	Type	Atoms	Z	Observed(°)	Ideal(°)
2	A	500	824	C19-C17-C15	-13.33	112.52	120.60
2	C	500	824	C19-C17-C15	-12.92	112.77	120.60
2	E	500	824	C19-C17-C15	-12.64	112.94	120.60
2	D	500	824	C12-C7-C2	-7.69	108.41	120.87
2	E	500	824	C12-C7-C2	-7.52	108.69	120.87
2	C	500	824	C12-C7-C2	-6.98	109.56	120.87
2	A	500	824	C12-C7-C2	-6.63	110.12	120.87
2	B	500	824	C12-C7-C2	-6.36	110.56	120.87
2	B	500	824	C10-C11-C12	-4.02	114.31	120.19
2	B	500	824	C2-C1-C14	-3.80	118.42	121.89
2	C	500	824	C10-C11-C12	-3.62	114.88	120.19
2	E	500	824	C2-C1-C14	-3.34	118.85	121.89
2	B	500	824	C1-C2-C7	-3.26	111.47	118.29
2	B	500	824	O3-C19-C20	-3.22	110.93	120.05
2	B	500	824	C15-C13-C14	-3.15	102.69	106.10
2	D	500	824	O3-C19-C20	-3.13	111.20	120.05
2	D	500	824	C1-C2-C7	-3.01	112.00	118.29
2	A	500	824	C1-C2-C7	-3.00	112.03	118.29
2	C	500	824	C1-C2-C7	-2.90	112.23	118.29
2	E	500	824	C10-C11-C12	-2.88	115.97	120.19
2	E	500	824	C1-C2-C7	-2.86	112.31	118.29
2	A	500	824	C10-C11-C12	-2.78	116.12	120.19
2	C	500	824	C2-C1-C14	-2.78	119.36	121.89
2	D	500	824	C10-C11-C12	-2.67	116.28	120.19
2	E	500	824	O3-C19-C20	-2.58	112.74	120.05
2	D	500	824	C15-C13-C14	-2.47	103.42	106.10
2	B	500	824	C18-C16-C15	-2.46	116.90	121.11
2	D	500	824	C18-C16-C15	-2.39	117.02	121.11
2	E	500	824	C18-C16-C15	-2.38	117.03	121.11
2	A	500	824	C18-C16-C15	-2.33	117.11	121.11
2	D	500	824	C13-C4-C3	-2.24	117.50	120.28
2	E	500	824	C13-C4-C3	-2.21	117.54	120.28
2	D	500	824	C2-C1-C14	-2.20	119.88	121.89
2	A	500	824	C1-C14-C13	-2.15	118.41	121.18
2	A	500	824	C2-C1-C14	-2.14	119.94	121.89
2	C	500	824	O3-C19-C20	-2.12	114.05	120.05
2	A	500	824	C15-C13-C14	-2.10	103.82	106.10
2	B	500	824	C13-C4-C3	-2.08	117.71	120.28
2	C	500	824	C15-C13-C14	-2.07	103.85	106.10
2	B	500	824	C10-C9-C8	2.09	123.24	120.19
2	B	500	824	C7-C2-C3	2.12	127.26	124.39
2	C	500	824	C10-C9-C8	2.26	123.50	120.19

Continued on next page...

Continued from previous page...

Mol	Chain	Res	Type	Atoms	Z	Observed(°)	Ideal(°)
2	C	500	824	C13-C14-N2	2.29	113.42	108.92
2	D	500	824	C7-C2-C3	2.39	127.61	124.39
2	E	500	824	C10-C9-C8	2.52	123.87	120.19
2	A	500	824	C13-C14-N2	2.73	114.28	108.92
2	D	500	824	C13-C14-N2	2.74	114.31	108.92
2	A	500	824	C10-C9-C8	3.05	124.65	120.19
2	B	500	824	C13-C14-N2	3.11	115.02	108.92
2	D	500	824	C1-C2-C3	3.14	120.37	118.31
2	A	500	824	C20-C19-C17	3.17	124.98	120.34
2	E	500	824	C20-C19-C17	3.39	125.31	120.34
2	E	500	824	C17-C15-C16	3.54	121.74	120.34
2	B	500	824	C17-C15-C16	3.61	121.77	120.34
2	A	500	824	C17-C15-C16	3.71	121.81	120.34
2	C	500	824	C20-C19-C17	3.96	126.15	120.34
2	E	500	824	C1-C2-C3	4.02	120.94	118.31
2	C	500	824	C1-C2-C3	4.03	120.95	118.31
2	D	500	824	C17-C15-C16	4.14	121.98	120.34
2	B	500	824	C1-C2-C3	4.50	121.25	118.31
2	A	500	824	C1-C2-C3	4.55	121.28	118.31
2	D	500	824	C20-C19-C17	4.65	127.15	120.34
2	B	500	824	C20-C19-C17	5.55	128.47	120.34
2	B	500	824	C8-C7-C2	6.70	131.72	120.87
2	D	500	824	C8-C7-C2	7.14	132.44	120.87
2	C	500	824	C8-C7-C2	7.37	132.81	120.87
2	A	500	824	C8-C7-C2	7.42	132.88	120.87
2	E	500	824	C8-C7-C2	7.86	133.60	120.87

There are no chirality outliers.

There are no torsion outliers.

There are no ring outliers.

No monomer is involved in short contacts.

5.7 Other polymers [i](#)

There are no such residues in this entry.

5.8 Polymer linkage issues [i](#)

There are no chain breaks in this entry.

6 Fit of model and data

6.1 Protein, DNA and RNA chains

In the following table, the column labelled ‘#RSRZ> 2’ contains the number (and percentage) of RSRZ outliers, followed by percent RSRZ outliers for the chain as percentile scores relative to all X-ray entries and entries of similar resolution. The OWAB column contains the minimum, median, 95th percentile and maximum values of the occupancy-weighted average B-factor per residue. The column labelled ‘Q< 0.9’ lists the number of (and percentage) of residues with an average occupancy less than 0.9.

Mol	Chain	Analysed	<RSRZ>	#RSRZ>2	OWAB(Å ²)	Q<0.9
1	A	276/326 (84%)	0.21	11 (3%) 42 30	59, 99, 164, 196	0
1	B	288/326 (88%)	0.13	3 (1%) 84 77	33, 57, 102, 172	0
1	C	285/326 (87%)	0.18	8 (2%) 56 44	51, 85, 133, 189	0
1	D	236/326 (72%)	0.22	13 (5%) 29 18	68, 113, 165, 207	0
1	E	251/326 (76%)	0.11	12 (4%) 34 23	95, 127, 170, 214	0
All	All	1336/1630 (81%)	0.17	47 (3%) 48 35	33, 98, 161, 214	0

All (47) RSRZ outliers are listed below:

Mol	Chain	Res	Type	RSRZ
1	E	88	ALA	5.3
1	D	99	ASP	4.7
1	D	284	MET	4.3
1	E	249	PRO	4.2
1	D	130	ILE	4.0
1	D	42	GLY	3.9
1	E	270	LEU	3.8
1	A	235	ASP	3.7
1	E	232	PRO	3.7
1	D	107	PHE	3.6
1	B	61	ASP	3.6
1	E	110	ALA	3.4
1	B	206	PRO	3.4
1	B	62	GLU	3.3
1	D	55	VAL	3.2
1	A	269	CYS	3.1
1	A	288	PHE	3.1
1	E	81	ASN	3.1
1	C	36	TYR	3.0
1	E	25	PHE	3.0

Continued on next page...

Continued from previous page...

Mol	Chain	Res	Type	RSRZ
1	E	172	PHE	3.0
1	D	51	ALA	2.9
1	C	101	LEU	2.9
1	D	100	GLN	2.8
1	D	131	ALA	2.8
1	A	265	PHE	2.8
1	C	32	GLY	2.8
1	D	216	LEU	2.8
1	C	176	ALA	2.7
1	A	262	PHE	2.5
1	A	36	TYR	2.4
1	A	122	GLY	2.4
1	E	57	ASP	2.4
1	D	57	ASP	2.4
1	D	102	TRP	2.3
1	C	233	LEU	2.3
1	A	131	ALA	2.3
1	E	251	PRO	2.3
1	C	172	PHE	2.2
1	C	96	GLY	2.2
1	A	253	LEU	2.2
1	A	81	ASN	2.2
1	A	287	PRO	2.1
1	D	265	PHE	2.1
1	E	255	SER	2.1
1	E	258	TRP	2.1
1	C	25	PHE	2.0

6.2 Non-standard residues in protein, DNA, RNA chains [i](#)

There are no non-standard protein/DNA/RNA residues in this entry.

6.3 Carbohydrates [i](#)

There are no carbohydrates in this entry.

6.4 Ligands [i](#)

In the following table, the Atoms column lists the number of modelled atoms in the group and the number defined in the chemical component dictionary. LLDF column lists the quality of electron density of the group with respect to its neighbouring residues in protein, DNA or RNA chains.

The B-factors column lists the minimum, median, 95th percentile and maximum values of B factors of atoms in the group. The column labelled 'Q< 0.9' lists the number of atoms with occupancy less than 0.9.

Mol	Type	Chain	Res	Atoms	RSCC	RSR	LLDF	B-factors(\AA^2)	Q<0.9
2	824	E	500	25/25	0.93	0.25	0.36	96,101,104,105	0
2	824	C	500	25/25	0.96	0.24	0.00	48,57,61,63	0
2	824	A	500	25/25	0.95	0.21	-0.09	53,62,67,70	0
2	824	B	500	25/25	0.98	0.20	-0.30	25,30,37,38	0
2	824	D	500	25/25	0.92	0.20	-0.74	87,91,94,95	0
3	NA	A	1315	1/1	0.94	0.13	-1.98	70,70,70,70	0
3	NA	E	1311	1/1	0.92	0.06	-2.48	83,83,83,83	0
3	NA	C	1315	1/1	0.78	0.12	-2.62	68,68,68,68	0
3	NA	D	1308	1/1	0.79	0.06	-3.06	94,94,94,94	0
3	NA	B	1315	1/1	0.91	0.09	-6.50	56,56,56,56	0

6.5 Other polymers [i](#)

There are no such residues in this entry.