



Full wwPDB X-ray Structure Validation Report ⓘ

Feb 1, 2016 – 06:28 AM GMT

PDB ID : 2X91
Title : Crystal structure of AnCE-lisinopril complex
Authors : Akif, M.; Georgiadis, D.; Mahajan, A.; Dive, V.; Sturrock, E.D.; Isaac, R.E.; Acharya, K.R.
Deposited on : 2010-03-14
Resolution : 1.98 Å(reported)

This is a Full wwPDB X-ray Structure Validation Report for a publicly released PDB entry.
We welcome your comments at validation@mail.wwpdb.org
A user guide is available at
<http://wwpdb.org/validation/2016/XrayValidationReportHelp>
with specific help available everywhere you see the ⓘ symbol.

The following versions of software and data (see [references ⓘ](#)) were used in the production of this report:

MolProbity : 4.02b-467
Mogul : 1.7 (RC4), CSD as536be (2015)
Xtriage (Phenix) : 1.9-1692
EDS : rb-20026688
Percentile statistics : 20151230.v01 (using entries in the PDB archive December 30th 2015)
Refmac : 5.8.0135
CCP4 : 6.5.0
Ideal geometry (proteins) : Engh & Huber (2001)
Ideal geometry (DNA, RNA) : Parkinson et al. (1996)
Validation Pipeline (wwPDB-VP) : trunk26865

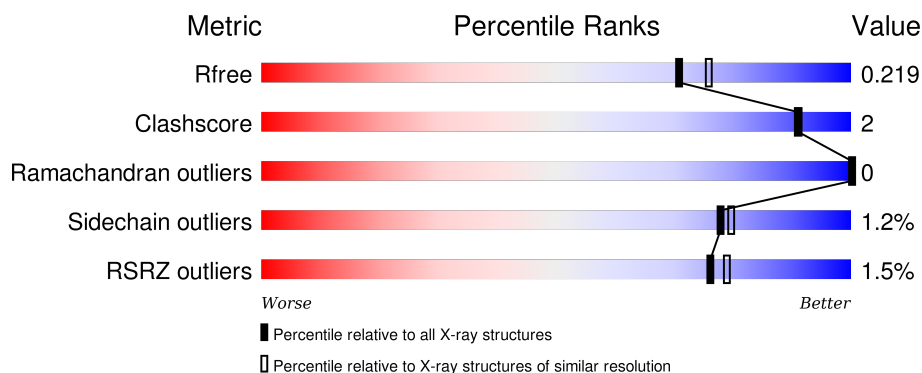
1 Overall quality at a glance

The following experimental techniques were used to determine the structure:

X-RAY DIFFRACTION

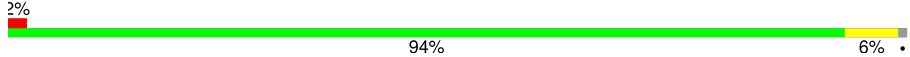
The reported resolution of this entry is 1.98 Å.

Percentile scores (ranging between 0-100) for global validation metrics of the entry are shown in the following graphic. The table shows the number of entries on which the scores are based.



Metric	Whole archive (#Entries)	Similar resolution (#Entries, resolution range(Å))
R_{free}	91344	8664 (2.00-1.96)
Clashscore	102246	9905 (2.00-1.96)
Ramachandran outliers	100387	9792 (2.00-1.96)
Sidechain outliers	100360	9791 (2.00-1.96)
RSRZ outliers	91569	8679 (2.00-1.96)

The table below summarises the geometric issues observed across the polymeric chains and their fit to the electron density. The red, orange, yellow and green segments on the lower bar indicate the fraction of residues that contain outliers for ≥ 3 , 2, 1 and 0 types of geometric quality criteria. A grey segment represents the fraction of residues that are not modelled. The numeric value for each fraction is indicated below the corresponding segment, with a dot representing fractions $\leq 5\%$. The upper red bar (where present) indicates the fraction of residues that have poor fit to the electron density. The numeric value is given above the bar.

Mol	Chain	Length	Quality of chain
1	A	598	

The following table lists non-polymeric compounds, carbohydrate monomers and non-standard residues in protein, DNA, RNA chains that are outliers for geometric or electron-density-fit criteria:

Mol	Type	Chain	Res	Chirality	Geometry	Clashes	Electron density
3	EPE	A	1616	-	-	-	X

Continued on next page...

Continued from previous page...

Mol	Type	Chain	Res	Chirality	Geometry	Clashes	Electron density
3	EPE	A	1617	-	-	-	X
6	NAG	A	1626	-	-	-	X

2 Entry composition [i](#)

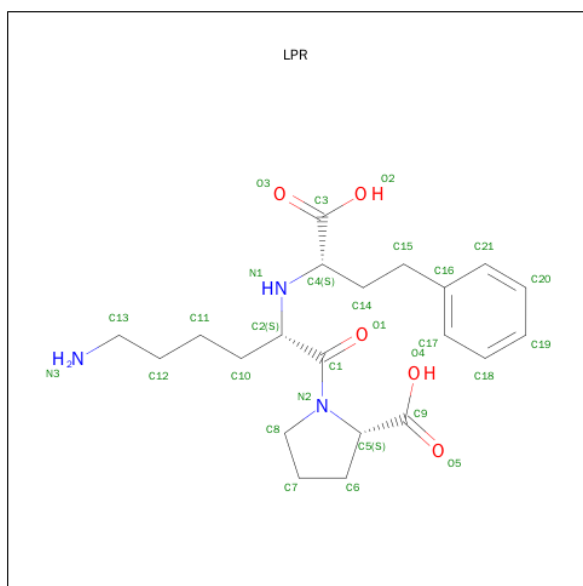
There are 7 unique types of molecules in this entry. The entry contains 5469 atoms, of which 0 are hydrogens and 0 are deuteriums.

In the tables below, the ZeroOcc column contains the number of atoms modelled with zero occupancy, the AltConf column contains the number of residues with at least one atom in alternate conformation and the Trace column contains the number of residues modelled with at most 2 atoms.

- Molecule 1 is a protein called ANGIOTENSIN CONVERTING ENZYME.

Mol	Chain	Residues	Atoms					ZeroOcc	AltConf	Trace
1	A	595	Total	C	N	O	S	0	2	0
			4863	3110	803	930	20			

- Molecule 2 is [N2-[(S)-1-CARBOXY-3-PHENYLPROPYL]-L-LYSYL-L-PROLINE (three-letter code: LPR) (formula: C₂₁H₃₁N₃O₅).



Mol	Chain	Residues	Atoms				ZeroOcc	AltConf
2	A	1	Total	C	N	O	0	0
			29	21	3	5		

- Molecule 3 is 4-(2-HYDROXYETHYL)-1-PIPERAZINE ETHANESULFONIC ACID (three-letter code: EPE) (formula: C₈H₁₈N₂O₄S).



Mol	Chain	Residues	Atoms					ZeroOcc	AltConf
3	A	1	Total	C	N	O	S	0	0
			15	8	2	4	1		
3	A	1	Total	C	N	O	S	0	0
			15	8	2	4	1		
3	A	1	Total	C	N	O	S	0	0
			15	8	2	4	1		

- Molecule 4 is ZINC ION (three-letter code: ZN) (formula: Zn).

Mol	Chain	Residues	Atoms		ZeroOcc	AltConf
4	A	1	Total	Zn	0	0
			1	1		

- Molecule 5 is a polymer of unknown type called SUGAR (6-MER).

Mol	Chain	Residues	Atoms				ZeroOcc	AltConf
5	A	6	Total	C	N	O	0	0
			72	40	2	30		

- Molecule 6 is SUGAR (N-ACETYL-D-GLUCOSAMINE) (three-letter code: NAG) (formula: C₈H₁₅NO₆).



Mol	Chain	Residues	Atoms				ZeroOcc	AltConf
6	A	1	Total	C	N	O	0	0
			14	8	1	5		
6	A	1	Total	C	N	O	0	0
			14	8	1	5		

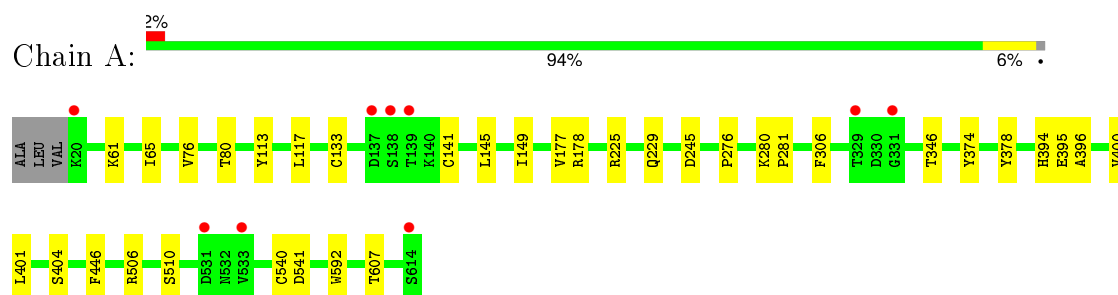
- Molecule 7 is water.

Mol	Chain	Residues	Atoms		ZeroOcc	AltConf
7	A	431	Total	O	0	0
			431	431		

3 Residue-property plots

These plots are drawn for all protein, RNA and DNA chains in the entry. The first graphic for a chain summarises the proportions of errors displayed in the second graphic. The second graphic shows the sequence view annotated by issues in geometry and electron density. Residues are color-coded according to the number of geometric quality criteria for which they contain at least one outlier: green = 0, yellow = 1, orange = 2 and red = 3 or more. A red dot above a residue indicates a poor fit to the electron density ($RSRZ > 2$). Stretches of 2 or more consecutive residues without any outlier are shown as a green connector. Residues present in the sample, but not in the model, are shown in grey.

• Molecule 1: ANGIOTENSIN CONVERTING ENZYME



4 Data and refinement statistics

Property	Value	Source
Space group	H 3	Depositor
Cell constants a, b, c, α , β , γ	172.81Å 172.81Å 102.52Å 90.00° 90.00° 120.00°	Depositor
Resolution (Å)	31.78 – 1.98 31.78 – 1.98	Depositor EDS
% Data completeness (in resolution range)	93.6 (31.78-1.98) 79.1 (31.78-1.98)	Depositor EDS
R_{merge}	0.07	Depositor
R_{sym}	(Not available)	Depositor
$\langle I/\sigma(I) \rangle$ ¹	2.65 (at 1.98Å)	Xtriage
Refinement program	REFMAC 5.5.0072	Depositor
R, R_{free}	0.192 , 0.209 0.197 , 0.219	Depositor DCC
R_{free} test set	3113 reflections (5.22%)	DCC
Wilson B-factor (Å ²)	28.7	Xtriage
Anisotropy	0.127	Xtriage
Bulk solvent k_{sol} (e/Å ³), B_{sol} (Å ²)	0.40 , 43.5	EDS
Estimated twinning fraction	0.017 for -2/3*h-1/3*k-4/3*l,-1/3*h-2/3*k+4/3*l,-1/3*h+1/3*k+1/3*l 0.013 for -h,1/3*h-1/3*k-4/3*l,-1/3*h-2/3*k+1/3*l 0.008 for -1/3*h+1/3*k+4/3*l,-k,2/3*h+1/3*k+1/3*l 0.013 for -h,2/3*h+1/3*k+4/3*l,1/3*h+2/3*k-1/3*l 0.024 for -1/3*h-2/3*k+4/3*l,-2/3*h-1/3*k-4/3*l,1/3*h-1/3*k-1/3*l 0.021 for 1/3*h+2/3*k-4/3*l,-k,-2/3*h-1/3*k-1/3*l 0.045 for h,-h-k,-l	Xtriage
L-test for twinning ²	$\langle L \rangle = 0.50$, $\langle L^2 \rangle = 0.33$	Xtriage
Outliers	0 of 62795 reflections	Xtriage
F_o, F_c correlation	0.95	EDS
Total number of atoms	5469	wwPDB-VP
Average B, all atoms (Å ²)	29.0	wwPDB-VP

Xtriage's analysis on translational NCS is as follows: *The largest off-origin peak in the Patterson function is 4.50% of the height of the origin peak. No significant pseudotranslation is detected.*

¹ Intensities estimated from amplitudes.

² Theoretical values of $\langle |L| \rangle$, $\langle L^2 \rangle$ for acentric reflections are 0.5, 0.375 respectively for untwinned datasets, and 0.333, 0.2 for perfectly twinned datasets.

5 Model quality [i](#)

5.1 Standard geometry [i](#)

Bond lengths and bond angles in the following residue types are not validated in this section: ZN, BMA, NAG, LPR, EPE, MAN

The Z score for a bond length (or angle) is the number of standard deviations the observed value is removed from the expected value. A bond length (or angle) with $|Z| > 5$ is considered an outlier worth inspection. RMSZ is the root-mean-square of all Z scores of the bond lengths (or angles).

Mol	Chain	Bond lengths		Bond angles	
		RMSZ	$\# Z > 5$	RMSZ	$\# Z > 5$
1	A	0.39	2/4995 (0.0%)	0.48	0/6768

All (2) bond length outliers are listed below:

Mol	Chain	Res	Type	Atoms	Z	Observed(Å)	Ideal(Å)
1	A	346	THR	CB-OG1	5.54	1.54	1.43
1	A	607	THR	CB-OG1	5.29	1.53	1.43

There are no bond angle outliers.

There are no chirality outliers.

There are no planarity outliers.

5.2 Too-close contacts [i](#)

In the following table, the Non-H and H(model) columns list the number of non-hydrogen atoms and hydrogen atoms in the chain respectively. The H(added) column lists the number of hydrogen atoms added and optimized by MolProbity. The Clashes column lists the number of clashes within the asymmetric unit, whereas Symm-Clashes lists symmetry related clashes.

Mol	Chain	Non-H	H(model)	H(added)	Clashes	Symm-Clashes
1	A	4863	0	4652	17	0
2	A	29	0	29	2	0
3	A	45	0	51	7	0
4	A	1	0	0	0	0
5	A	72	0	61	0	0
6	A	28	0	26	0	0
7	A	431	0	0	3	0
All	All	5469	0	4819	22	0

The all-atom clashscore is defined as the number of clashes found per 1000 atoms (including hydrogen atoms). The all-atom clashscore for this structure is 2.

All (22) close contacts within the same asymmetric unit are listed below, sorted by their clash magnitude.

Atom-1	Atom-2	Interatomic distance (Å)	Clash overlap (Å)
2:A:1615:LPR:H18	3:A:1616:EPE:H31	1.75	0.68
1:A:61:LYS:O	1:A:65:ILE:HG12	1.98	0.64
1:A:276:PRO:HB3	1:A:592:TRP:CH2	2.38	0.59
1:A:404:SER:HB2	1:A:541:ASP:HA	1.85	0.58
1:A:506:ARG:HH12	3:A:1616:EPE:H32	1.72	0.55
1:A:113:TYR:CE2	1:A:117:LEU:HD11	2.43	0.54
1:A:306:PHE:CD2	1:A:401:LEU:HD13	2.46	0.51
1:A:395:GLU:HB2	1:A:510:SER:HB2	1.94	0.50
1:A:133:CYS:HA	1:A:141:CYS:HA	1.94	0.49
1:A:178:ARG:NH1	7:A:2102:HOH:O	2.47	0.47
3:A:1617:EPE:H32	7:A:2416:HOH:O	2.16	0.45
1:A:177:VAL:HG13	1:A:177:VAL:O	2.17	0.45
1:A:225:ARG:O	1:A:229:GLN:HG2	2.16	0.45
1:A:506:ARG:HH22	3:A:1616:EPE:H52	1.82	0.44
1:A:145:LEU:HA	1:A:149:ILE:HB	2.00	0.43
3:A:1616:EPE:H72	7:A:2339:HOH:O	2.19	0.43
1:A:280:LYS:HB3	1:A:281:PRO:HD2	2.00	0.42
1:A:396:ALA:O	1:A:400:VAL:HG23	2.19	0.42
1:A:177:VAL:O	1:A:177:VAL:CG1	2.68	0.41
2:A:1615:LPR:C18	3:A:1616:EPE:H31	2.46	0.41
1:A:76:VAL:O	1:A:80:THR:HG23	2.21	0.40
3:A:1617:EPE:H61	3:A:1617:EPE:H101	1.74	0.40

There are no symmetry-related clashes.

5.3 Torsion angles

5.3.1 Protein backbone

In the following table, the Percentiles column shows the percent Ramachandran outliers of the chain as a percentile score with respect to all X-ray entries followed by that with respect to entries of similar resolution.

The Analysed column shows the number of residues for which the backbone conformation was analysed, and the total number of residues.

Mol	Chain	Analysed	Favoured	Allowed	Outliers	Percentiles	
1	A	595/598 (100%)	587 (99%)	8 (1%)	0	100	100

There are no Ramachandran outliers to report.

5.3.2 Protein sidechains ⓘ

In the following table, the Percentiles column shows the percent sidechain outliers of the chain as a percentile score with respect to all X-ray entries followed by that with respect to entries of similar resolution.

The Analysed column shows the number of residues for which the sidechain conformation was analysed, and the total number of residues.

Mol	Chain	Analysed	Rotameric	Outliers	Percentiles	
1	A	519/520 (100%)	513 (99%)	6 (1%)	78	80

All (6) residues with a non-rotameric sidechain are listed below:

Mol	Chain	Res	Type
1	A	245	ASP
1	A	374	TYR
1	A	378	TYR
1	A	394	HIS
1	A	446	PHE
1	A	540	CYS

Some sidechains can be flipped to improve hydrogen bonding and reduce clashes. There are no such sidechains identified.

5.3.3 RNA ⓘ

There are no RNA molecules in this entry.

5.4 Non-standard residues in protein, DNA, RNA chains ⓘ

There are no non-standard protein/DNA/RNA residues in this entry.

5.5 Carbohydrates ⓘ

6 carbohydrates are modelled in this entry.

In the following table, the Counts columns list the number of bonds (or angles) for which Mogul statistics could be retrieved, the number of bonds (or angles) that are observed in the model and the number of bonds (or angles) that are defined in the chemical component dictionary. The Link column lists molecule types, if any, to which the group is linked. The Z score for a bond length (or angle) is the number of standard deviations the observed value is removed from the expected value. A bond length (or angle) with $|Z| > 2$ is considered an outlier worth inspection. RMSZ is the root-mean-square of all Z scores of the bond lengths (or angles).

Mol	Type	Chain	Res	Link	Bond lengths			Bond angles		
					Counts	RMSZ	$\# Z > 2$	Counts	RMSZ	$\# Z > 2$
5	NAG	A	1620	1,5	14,14,15	0.47	0	15,19,21	0.77	1 (6%)
5	NAG	A	1621	5	14,14,15	0.45	0	15,19,21	1.44	2 (13%)
5	BMA	A	1622	5	11,11,12	0.63	0	14,15,17	0.82	0
5	BMA	A	1623	5	11,11,12	0.56	0	14,15,17	1.14	2 (14%)
5	MAN	A	1624	5	11,11,12	0.61	0	14,15,17	1.09	2 (14%)
5	MAN	A	1627	5	11,11,12	0.53	0	14,15,17	1.25	2 (14%)

In the following table, the Chirals column lists the number of chiral outliers, the number of chiral centers analysed, the number of these observed in the model and the number defined in the chemical component dictionary. Similar counts are reported in the Torsion and Rings columns. '-' means no outliers of that kind were identified.

Mol	Type	Chain	Res	Link	Chirals	Torsions	Rings
5	NAG	A	1620	1,5	-	0/6/23/26	0/1/1/1
5	NAG	A	1621	5	-	0/6/23/26	0/1/1/1
5	BMA	A	1622	5	-	0/2/19/22	0/1/1/1
5	BMA	A	1623	5	-	0/2/19/22	0/1/1/1
5	MAN	A	1624	5	-	0/2/19/22	0/1/1/1
5	MAN	A	1627	5	-	0/2/19/22	0/1/1/1

There are no bond length outliers.

All (9) bond angle outliers are listed below:

Mol	Chain	Res	Type	Atoms	Z	Observed(°)	Ideal(°)
5	A	1627	MAN	C3-C4-C5	2.05	113.77	110.20
5	A	1620	NAG	C1-O5-C5	2.13	114.95	112.25
5	A	1624	MAN	C1-O5-C5	2.21	115.05	112.25
5	A	1623	BMA	C1-C2-C3	2.42	112.41	109.54
5	A	1624	MAN	C1-C2-C3	2.43	112.42	109.54
5	A	1621	NAG	C1-O5-C5	3.07	116.15	112.25
5	A	1623	BMA	C1-O5-C5	3.22	116.33	112.25
5	A	1621	NAG	C2-N2-C7	3.29	127.26	123.04
5	A	1627	MAN	C1-O5-C5	3.65	116.87	112.25

There are no chirality outliers.

There are no torsion outliers.

There are no ring outliers.

No monomer is involved in short contacts.

5.6 Ligand geometry

Of 7 ligands modelled in this entry, 1 is monoatomic - leaving 6 for Mogul analysis.

In the following table, the Counts columns list the number of bonds (or angles) for which Mogul statistics could be retrieved, the number of bonds (or angles) that are observed in the model and the number of bonds (or angles) that are defined in the chemical component dictionary. The Link column lists molecule types, if any, to which the group is linked. The Z score for a bond length (or angle) is the number of standard deviations the observed value is removed from the expected value. A bond length (or angle) with $|Z| > 2$ is considered an outlier worth inspection. RMSZ is the root-mean-square of all Z scores of the bond lengths (or angles).

Mol	Type	Chain	Res	Link	Bond lengths			Bond angles		
					Counts	RMSZ	# $ Z > 2$	Counts	RMSZ	# $ Z > 2$
2	LPR	A	1615	4	24,30,30	1.98	10 (41%)	24,39,39	1.06	0
3	EPE	A	1616	-	14,15,15	0.42	0	18,20,20	1.98	5 (27%)
3	EPE	A	1617	-	14,15,15	0.38	0	18,20,20	1.89	4 (22%)
3	EPE	A	1618	-	14,15,15	0.42	0	18,20,20	1.86	4 (22%)
6	NAG	A	1625	1	14,14,15	0.55	0	15,19,21	0.67	0
6	NAG	A	1626	1	14,14,15	0.57	0	15,19,21	0.69	0

In the following table, the Chirals column lists the number of chiral outliers, the number of chiral centers analysed, the number of these observed in the model and the number defined in the chemical component dictionary. Similar counts are reported in the Torsion and Rings columns. '-' means no outliers of that kind were identified.

Mol	Type	Chain	Res	Link	Chirals	Torsions	Rings
2	LPR	A	1615	4	-	0/22/40/40	0/2/2/2
3	EPE	A	1616	-	-	0/9/19/19	0/1/1/1
3	EPE	A	1617	-	-	0/9/19/19	0/1/1/1
3	EPE	A	1618	-	-	0/9/19/19	0/1/1/1
6	NAG	A	1625	1	-	0/6/23/26	0/1/1/1
6	NAG	A	1626	1	-	0/6/23/26	0/1/1/1

All (10) bond length outliers are listed below:

Mol	Chain	Res	Type	Atoms	Z	Observed(Å)	Ideal(Å)
2	A	1615	LPR	C7-C6	-3.44	1.37	1.51
2	A	1615	LPR	C2-C1	2.03	1.57	1.53
2	A	1615	LPR	C20-C19	2.12	1.43	1.38
2	A	1615	LPR	C17-C16	2.12	1.43	1.38
2	A	1615	LPR	C19-C18	2.29	1.43	1.38
2	A	1615	LPR	C14-C4	2.35	1.56	1.53
2	A	1615	LPR	C21-C16	2.42	1.44	1.38
2	A	1615	LPR	C5-N2	2.97	1.51	1.47
2	A	1615	LPR	O1-C1	2.97	1.27	1.22
2	A	1615	LPR	C4-N1	4.01	1.53	1.47

All (13) bond angle outliers are listed below:

Mol	Chain	Res	Type	Atoms	Z	Observed(°)	Ideal(°)
3	A	1617	EPE	O1S-S-C10	2.26	108.83	106.91
3	A	1617	EPE	C7-N4-C3	2.49	117.66	111.27
3	A	1616	EPE	C7-N4-C3	2.74	118.28	111.27
3	A	1618	EPE	O1S-S-C10	2.83	109.32	106.91
3	A	1616	EPE	O2S-S-C10	3.03	109.49	106.91
3	A	1618	EPE	C7-N4-C3	3.08	119.17	111.27
3	A	1616	EPE	C7-N4-C5	3.31	119.75	111.27
3	A	1618	EPE	C7-N4-C5	3.36	119.89	111.27
3	A	1616	EPE	O1S-S-C10	3.61	109.98	106.91
3	A	1617	EPE	C7-N4-C5	3.94	121.37	111.27
3	A	1616	EPE	C5-N4-C3	4.72	119.12	108.90
3	A	1617	EPE	C5-N4-C3	5.11	119.96	108.90
3	A	1618	EPE	C5-N4-C3	5.17	120.10	108.90

There are no chirality outliers.

There are no torsion outliers.

There are no ring outliers.

3 monomers are involved in 7 short contacts:

Mol	Chain	Res	Type	Clashes	Symm-Clashes
2	A	1615	LPR	2	0
3	A	1616	EPE	5	0
3	A	1617	EPE	2	0

5.7 Other polymers ⓘ

There are no such residues in this entry.

5.8 Polymer linkage issues

There are no chain breaks in this entry.

6 Fit of model and data [i](#)

6.1 Protein, DNA and RNA chains [i](#)

In the following table, the column labelled ‘#RSRZ> 2’ contains the number (and percentage) of RSRZ outliers, followed by percent RSRZ outliers for the chain as percentile scores relative to all X-ray entries and entries of similar resolution. The OWAB column contains the minimum, median, 95th percentile and maximum values of the occupancy-weighted average B-factor per residue. The column labelled ‘Q< 0.9’ lists the number of (and percentage) of residues with an average occupancy less than 0.9.

Mol	Chain	Analysed	<RSRZ>	#RSRZ>2	OWAB(Å ²)	Q<0.9
1	A	595/598 (99%)	-0.17	9 (1%) 76 79	18, 28, 39, 47	7 (1%)

All (9) RSRZ outliers are listed below:

Mol	Chain	Res	Type	RSRZ
1	A	139	THR	5.2
1	A	20	LYS	3.5
1	A	533	VAL	3.4
1	A	331	GLY	3.2
1	A	614	SER	3.1
1	A	531	ASP	2.6
1	A	138	SER	2.3
1	A	329	THR	2.2
1	A	137	ASP	2.0

6.2 Non-standard residues in protein, DNA, RNA chains [i](#)

There are no non-standard protein/DNA/RNA residues in this entry.

6.3 Carbohydrates [i](#)

In the following table, the Atoms column lists the number of modelled atoms in the group and the number defined in the chemical component dictionary. LLDF column lists the quality of electron density of the group with respect to its neighbouring residues in protein, DNA or RNA chains. The B-factors column lists the minimum, median, 95th percentile and maximum values of B factors of atoms in the group. The column labelled ‘Q< 0.9’ lists the number of atoms with occupancy less than 0.9.

Mol	Type	Chain	Res	Atoms	RSCC	RSR	LLDF	B-factors(Å ²)	Q<0.9
5	NAG	A	1620	14/15	0.97	0.07	-0.84	30,31,33,36	0

Continued on next page...

Continued from previous page...

Mol	Type	Chain	Res	Atoms	RSCC	RSR	LLDF	B-factors(\AA^2)	Q<0.9
5	NAG	A	1621	14/15	0.95	0.15	-	39,42,44,48	0
5	MAN	A	1627	11/12	0.89	0.18	-	60,61,63,65	0
5	BMA	A	1622	11/12	0.90	0.17	-	53,56,58,61	0
5	MAN	A	1624	11/12	0.78	0.31	-	62,64,64,64	0
5	BMA	A	1623	11/12	0.81	0.24	-	67,68,69,69	0

6.4 Ligands [i](#)

In the following table, the Atoms column lists the number of modelled atoms in the group and the number defined in the chemical component dictionary. LLDF column lists the quality of electron density of the group with respect to its neighbouring residues in protein, DNA or RNA chains. The B-factors column lists the minimum, median, 95th percentile and maximum values of B factors of atoms in the group. The column labelled 'Q< 0.9' lists the number of atoms with occupancy less than 0.9.

Mol	Type	Chain	Res	Atoms	RSCC	RSR	LLDF	B-factors(\AA^2)	Q<0.9
3	EPE	A	1616	15/15	0.82	0.26	6.79	70,72,73,73	0
6	NAG	A	1626	14/15	0.81	0.39	4.99	44,45,45,45	14
3	EPE	A	1617	15/15	0.94	0.15	3.61	48,49,51,52	0
3	EPE	A	1618	15/15	0.95	0.11	1.72	45,48,51,52	0
2	LPR	A	1615	29/29	0.97	0.14	1.12	22,24,30,33	0
4	ZN	A	1619	1/1	1.00	0.08	-	21,21,21,21	0
6	NAG	A	1625	14/15	0.78	0.39	-	36,37,38,38	14

6.5 Other polymers [i](#)

There are no such residues in this entry.