



Full wwPDB X-ray Structure Validation Report ⓘ

Jul 15, 2016 – 12:43 AM EDT

PDB ID : 4XE5
Title : Crystal structure of the Na,K-ATPase from bovine
Authors : Gregersen, J.L.; Mattle, D.; Fedosova, N.U.; Nissen, P.; Reinhard, L.
Deposited on : 2014-12-22
Resolution : 3.90 Å(reported)

This is a Full wwPDB X-ray Structure Validation Report for a publicly released PDB entry.
We welcome your comments at validation@mail.wwpdb.org
A user guide is available at
<http://wwpdb.org/validation/2016/XrayValidationReportHelp>
with specific help available everywhere you see the ⓘ symbol.

The following versions of software and data (see [references ⓘ](#)) were used in the production of this report:

MolProbity : 4.02b-467
Mogul : 1.7.1 (RC1), CSD as537be (2016)
Xtriage (Phenix) : 1.9-1692
EDS : rb-20027790
Percentile statistics : 20151230.v01 (using entries in the PDB archive December 30th 2015)
Refmac : 5.8.0135
CCP4 : 6.5.0
Ideal geometry (proteins) : Engh & Huber (2001)
Ideal geometry (DNA, RNA) : Parkinson et al. (1996)
Validation Pipeline (wwPDB-VP) : rb-20027790

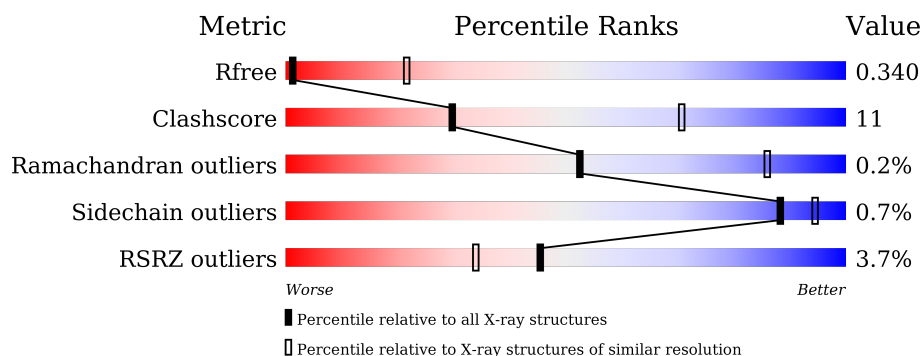
1 Overall quality at a glance

The following experimental techniques were used to determine the structure:

X-RAY DIFFRACTION

The reported resolution of this entry is 3.90 Å.

Percentile scores (ranging between 0-100) for global validation metrics of the entry are shown in the following graphic. The table shows the number of entries on which the scores are based.



Metric	Whole archive (#Entries)	Similar resolution (#Entries, resolution range(Å))
R_{free}	91344	1014 (4.28-3.52)
Clashscore	102246	1031 (4.24-3.56)
Ramachandran outliers	100387	1012 (4.26-3.54)
Sidechain outliers	100360	1004 (4.26-3.54)
RSRZ outliers	91569	1018 (4.28-3.52)

The table below summarises the geometric issues observed across the polymeric chains and their fit to the electron density. The red, orange, yellow and green segments on the lower bar indicate the fraction of residues that contain outliers for ≥ 3 , 2, 1 and 0 types of geometric quality criteria. A grey segment represents the fraction of residues that are not modelled. The numeric value for each fraction is indicated below the corresponding segment, with a dot representing fractions $\leq 5\%$. The upper red bar (where present) indicates the fraction of residues that have poor fit to the electron density. The numeric value is given above the bar.

Mol	Chain	Length	Quality of chain
1	A	1021	<div> <div>4%</div> <div>74%</div> <div>23%</div> <div>.</div> </div>
2	B	303	<div> <div>4%</div> <div>58%</div> <div>34%</div> <div>7%</div> </div>
3	G	58	<div> <div>48%</div> <div>7%</div> <div>45%</div> </div>

The following table lists non-polymeric compounds, carbohydrate monomers and non-standard residues in protein, DNA, RNA chains that are outliers for geometric or electron-density-fit criteria:

Mol	Type	Chain	Res	Chirality	Geometry	Clashes	Electron density
4	MG	A	1102	-	-	-	X
6	CLR	A	1105	-	-	-	X
6	CLR	A	1106	-	-	-	X

2 Entry composition

There are 7 unique types of molecules in this entry. The entry contains 10362 atoms, of which 0 are hydrogens and 0 are deuteriums.

In the tables below, the ZeroOcc column contains the number of atoms modelled with zero occupancy, the AltConf column contains the number of residues with at least one atom in alternate conformation and the Trace column contains the number of residues modelled with at most 2 atoms.

- Molecule 1 is a protein called Sodium/potassium-transporting ATPase subunit alpha-1.

Mol	Chain	Residues	Atoms								ZeroOcc	AltConf	Trace
1	A	995	Total	Be	C	F	N	O	S		0	0	0
			7717	1	4909	3	1303	1453	48				

- Molecule 2 is a protein called Sodium/potassium-transporting ATPase subunit beta.

Mol	Chain	Residues	Atoms					ZeroOcc	AltConf	Trace
2	B	281	Total	C	N	O	S	0	0	0
			2286	1480	372	422	12			

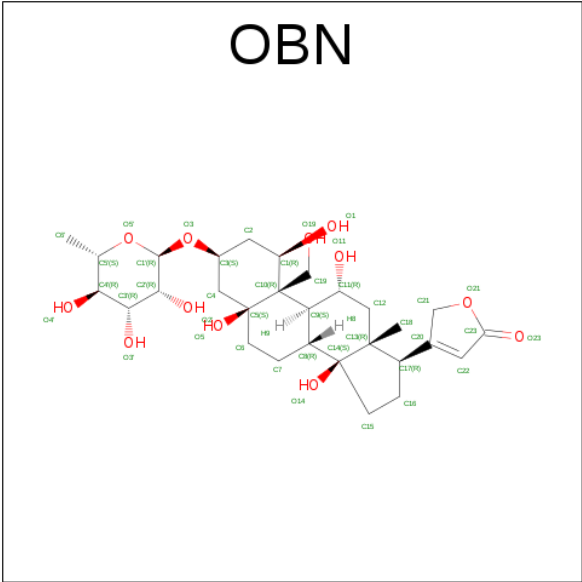
- Molecule 3 is a protein called Sodium/potassium-transporting ATPase subunit gamma.

Mol	Chain	Residues	Atoms				ZeroOcc	AltConf	Trace
3	G	32	Total	C	N	O	0	0	0
			254	173	37	44			

- Molecule 4 is MAGNESIUM ION (three-letter code: MG) (formula: Mg).

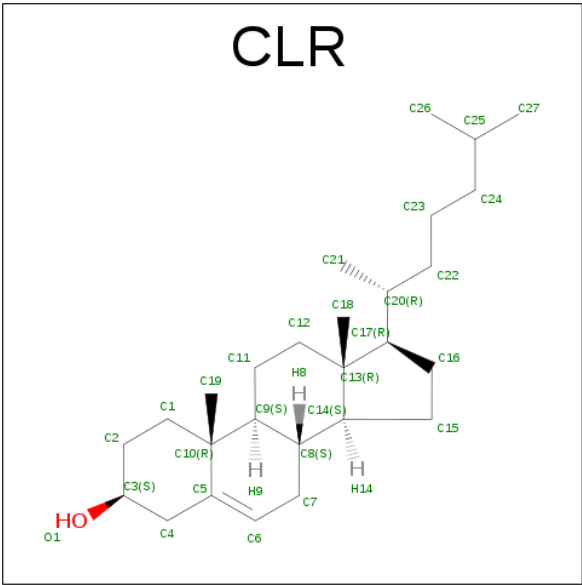
Mol	Chain	Residues	Atoms		ZeroOcc	AltConf
4	A	3	Total	Mg	0	0
			3	3		

- Molecule 5 is OUABAIN (three-letter code: OBN) (formula: C₂₉H₄₄O₁₂).



Mol	Chain	Residues	Atoms			ZeroOcc	AltConf
5	A	1	Total	C	O	0	0
			41	29	12		

- Molecule 6 is CHOLESTEROL (three-letter code: CLR) (formula: C₂₇H₄₆O).



Mol	Chain	Residues	Atoms			ZeroOcc	AltConf
6	A	1	Total	C	O	0	0
			28	27	1		
6	A	1	Total	C	O	0	0
			28	27	1		

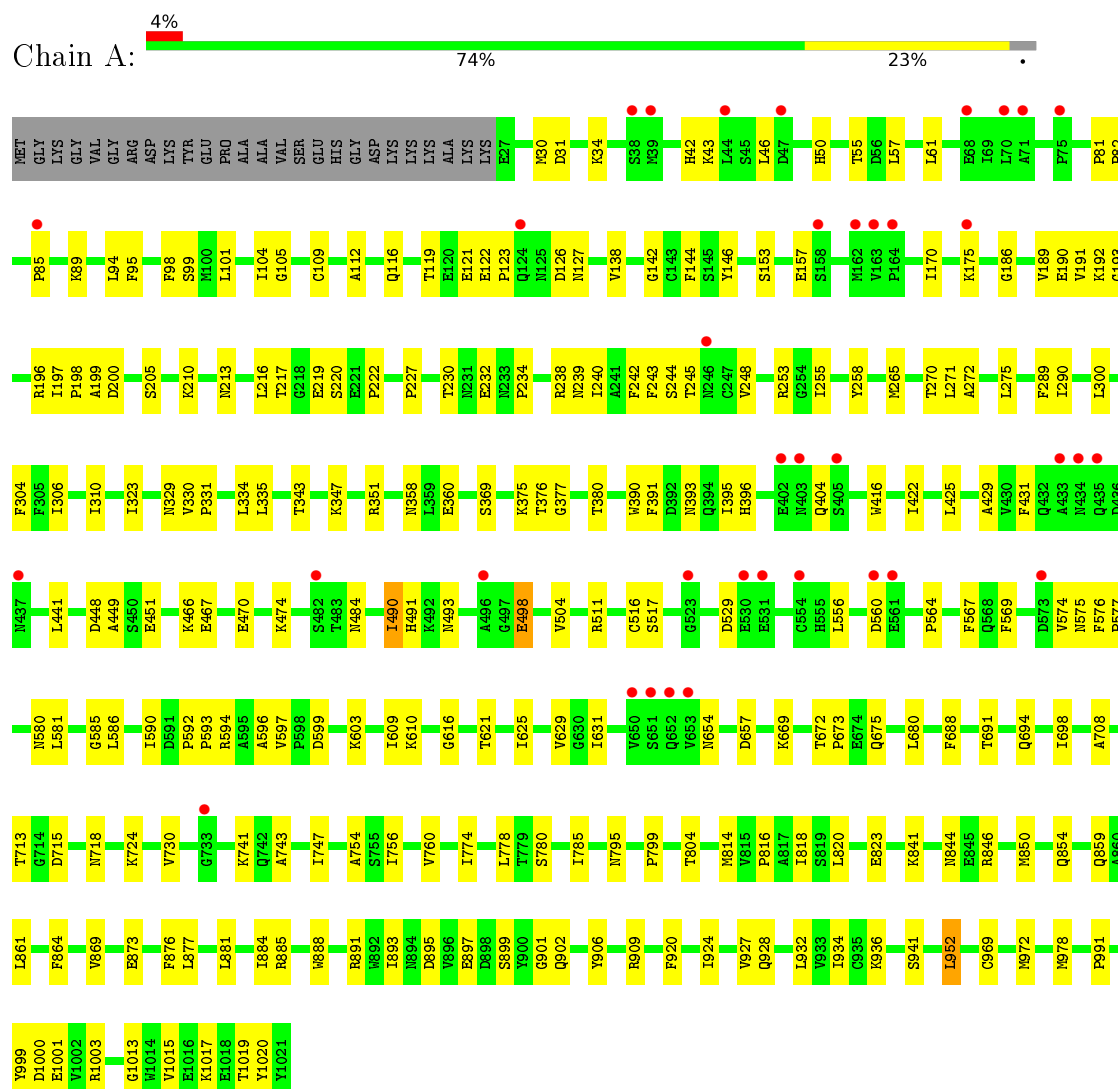
- Molecule 7 is water.

Mol	Chain	Residues	Atoms		ZeroOcc	AltConf
7	A	5	Total	O	0	0
			5	5		

3 Residue-property plots

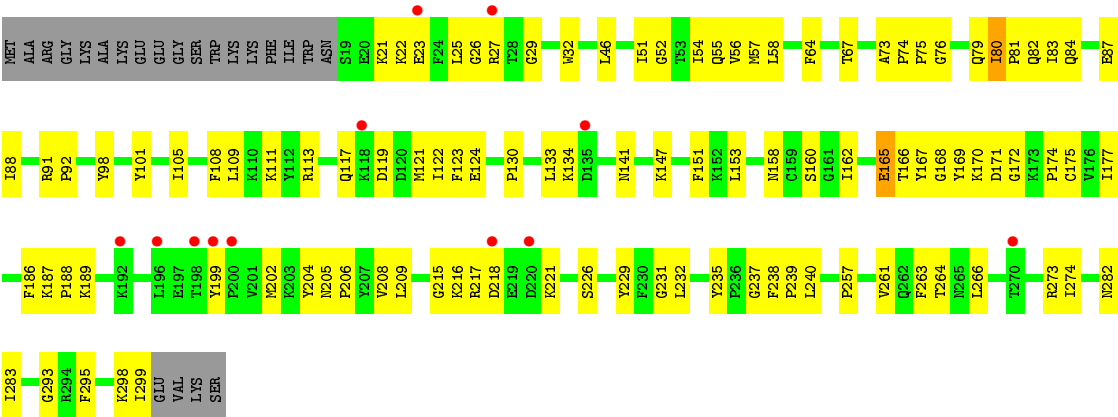
These plots are drawn for all protein, RNA and DNA chains in the entry. The first graphic for a chain summarises the proportions of errors displayed in the second graphic. The second graphic shows the sequence view annotated by issues in geometry and electron density. Residues are color-coded according to the number of geometric quality criteria for which they contain at least one outlier: green = 0, yellow = 1, orange = 2 and red = 3 or more. A red dot above a residue indicates a poor fit to the electron density ($RSRZ > 2$). Stretches of 2 or more consecutive residues without any outlier are shown as a green connector. Residues present in the sample, but not in the model, are shown in grey.

- Molecule 1: Sodium/potassium-transporting ATPase subunit alpha-1

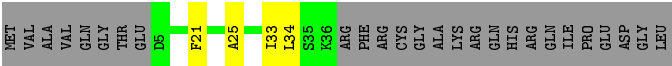


- Molecule 2: Sodium/potassium-transporting ATPase subunit beta





● Molecule 3: Sodium/potassium-transporting ATPase subunit gamma



4 Data and refinement statistics

Property	Value	Source
Space group	C 2 2 21	Depositor
Cell constants a, b, c, α , β , γ	64.75Å 301.07Å 242.29Å 90.00° 90.00° 90.00°	Depositor
Resolution (Å)	29.74 – 3.90 29.74 – 3.72	Depositor EDS
% Data completeness (in resolution range)	64.9 (29.74-3.90) 59.4 (29.74-3.72)	Depositor EDS
R_{merge}	0.16	Depositor
R_{sym}	(Not available)	Depositor
$\langle I/\sigma(I) \rangle$ ¹	2.54 (at 3.75Å)	Xtriage
Refinement program	PHENIX (phenix.refine: dev_1888)	Depositor
R, R_{free}	0.322 , 0.336 0.328 , 0.340	Depositor DCC
R_{free} test set	743 reflections (4.99%)	DCC
Wilson B-factor (Å ²)	91.1	Xtriage
Anisotropy	0.258	Xtriage
Bulk solvent k_{sol} (e/Å ³), B_{sol} (Å ²)	0.30 , 45.6	EDS
L-test for twinning ²	$\langle L \rangle = 0.43$, $\langle L^2 \rangle = 0.26$	Xtriage
Estimated twinning fraction	No twinning to report.	Xtriage
F_o, F_c correlation	0.79	EDS
Total number of atoms	10362	wwPDB-VP
Average B, all atoms (Å ²)	111.0	wwPDB-VP

Xtriage's analysis on translational NCS is as follows: *The largest off-origin peak in the Patterson function is 3.20% of the height of the origin peak. No significant pseudotranslation is detected.*

¹Intensities estimated from amplitudes.

²Theoretical values of $\langle |L| \rangle$, $\langle L^2 \rangle$ for acentric reflections are 0.5, 0.333 respectively for untwinned datasets, and 0.375, 0.2 for perfectly twinned datasets.

5 Model quality [i](#)

5.1 Standard geometry [i](#)

Bond lengths and bond angles in the following residue types are not validated in this section: OBN, MG, CLR, BFD

The Z score for a bond length (or angle) is the number of standard deviations the observed value is removed from the expected value. A bond length (or angle) with $|Z| > 5$ is considered an outlier worth inspection. RMSZ is the root-mean-square of all Z scores of the bond lengths (or angles).

Mol	Chain	Bond lengths		Bond angles	
		RMSZ	# Z >5	RMSZ	# Z >5
1	A	0.26	0/7852	0.45	0/10654
2	B	0.31	0/2344	0.51	0/3163
3	G	0.32	0/260	0.44	0/353
All	All	0.27	0/10456	0.46	0/14170

Chiral center outliers are detected by calculating the chiral volume of a chiral center and verifying if the center is modelled as a planar moiety or with the opposite hand. A planarity outlier is detected by checking planarity of atoms in a peptide group, atoms in a mainchain group or atoms of a sidechain that are expected to be planar.

Mol	Chain	#Chirality outliers	#Planarity outliers
2	B	0	1

There are no bond length outliers.

There are no bond angle outliers.

There are no chirality outliers.

All (1) planarity outliers are listed below:

Mol	Chain	Res	Type	Group
2	B	165	GLU	Peptide

5.2 Too-close contacts [i](#)

In the following table, the Non-H and H(model) columns list the number of non-hydrogen atoms and hydrogen atoms in the chain respectively. The H(added) column lists the number of hydrogen atoms added and optimized by MolProbity. The Clashes column lists the number of clashes within the asymmetric unit, whereas Symm-Clashes lists symmetry related clashes.

Mol	Chain	Non-H	H(model)	H(added)	Clashes	Symm-Clashes
1	A	7717	0	7754	155	0
2	B	2286	0	2268	77	0
3	G	254	0	257	2	0
4	A	3	0	0	0	0
5	A	41	0	44	3	0
6	A	56	0	92	3	0
7	A	5	0	0	1	0
All	All	10362	0	10415	233	0

The all-atom clashscore is defined as the number of clashes found per 1000 atoms (including hydrogen atoms). The all-atom clashscore for this structure is 11.

All (233) close contacts within the same asymmetric unit are listed below, sorted by their clash magnitude.

Atom-1	Atom-2	Interatomic distance (Å)	Clash overlap (Å)
2:B:80:ILE:HG13	2:B:81:PRO:HD3	1.58	0.85
1:A:123:PRO:HA	1:A:126:ASP:HB2	1.64	0.77
2:B:130:PRO:HD3	2:B:232:LEU:HD12	1.68	0.75
1:A:404:GLN:HE21	1:A:441:LEU:HD11	1.51	0.74
1:A:893:ILE:O	1:A:909:ARG:NH2	2.22	0.73
1:A:390:TRP:HB3	1:A:586:LEU:H	1.54	0.72
1:A:885:ARG:HA	1:A:888:TRP:HB3	1.73	0.71
1:A:112:ALA:HB2	1:A:323:ILE:HG21	1.73	0.71
1:A:609:ILE:HD11	1:A:760:VAL:HG21	1.74	0.69
1:A:200:ASP:HB2	1:A:258:TYR:HB2	1.74	0.69
2:B:80:ILE:HD11	2:B:177:ILE:H	1.58	0.69
2:B:165:GLU:HB3	2:B:166:THR:HA	1.74	0.68
1:A:493:ASN:ND2	1:A:498:GLU:O	2.27	0.68
2:B:170:LYS:HB2	2:B:174:PRO:HA	1.76	0.67
2:B:202:MET:HB2	2:B:204:TYR:CE2	2.30	0.65
1:A:876:PHE:HB3	1:A:881:LEU:HD21	1.78	0.65
1:A:85:PRO:HB2	1:A:89:LYS:HD3	1.78	0.63
1:A:869:VAL:HG22	2:B:57:MET:HG3	1.79	0.63
2:B:202:MET:HB2	2:B:204:TYR:HE2	1.63	0.63
2:B:217:ARG:NH1	2:B:218:ASP:OD2	2.33	0.62
2:B:121:MET:O	2:B:147:LYS:NZ	2.32	0.62
1:A:122:GLU:OE2	5:A:1104:OBN:O5	2.17	0.62
2:B:29:GLY:HA2	2:B:32:TRP:CD1	2.35	0.62
2:B:170:LYS:HB2	2:B:175:CYS:H	1.63	0.62
1:A:854:GLN:OE1	1:A:999:TYR:OH	2.17	0.61
1:A:884:ILE:HG22	1:A:888:TRP:HB2	1.82	0.61
1:A:380:THR:HA	1:A:593:PRO:HA	1.81	0.61

Continued on next page...

Continued from previous page...

Atom-1	Atom-2	Interatomic distance (Å)	Clash overlap (Å)
1:A:34:LYS:HE2	1:A:270:THR:HB	1.83	0.61
1:A:517:SER:HB3	1:A:580:ASN:HA	1.81	0.61
2:B:216:LYS:HB2	2:B:221:LYS:HG2	1.83	0.61
1:A:1015:VAL:O	1:A:1019:THR:OG1	2.14	0.60
2:B:189:LYS:H	2:B:282:ASN:HB2	1.67	0.60
1:A:895:ASP:OD1	2:B:82:GLN:NE2	2.35	0.60
1:A:109:CYS:O	1:A:127:ASN:ND2	2.35	0.60
2:B:168:GLY:HA3	2:B:171:ASP:HB3	1.84	0.60
1:A:190:GLU:HB2	1:A:253:ARG:HD3	1.83	0.59
1:A:242:PHE:O	1:A:245:THR:OG1	2.19	0.59
1:A:873:GLU:O	2:B:67:THR:OG1	2.21	0.59
2:B:133:LEU:HG	2:B:240:LEU:HB3	1.84	0.59
1:A:196:ARG:HE	1:A:244:SER:HA	1.68	0.58
1:A:186:GLY:HA2	1:A:255:ILE:HG23	1.85	0.58
2:B:187:LYS:O	2:B:282:ASN:ND2	2.36	0.58
1:A:795:ASN:HA	1:A:885:ARG:HE	1.69	0.57
2:B:160:SER:HB2	2:B:169:TYR:CE1	2.40	0.57
1:A:55:THR:HG23	1:A:61:LEU:HG	1.86	0.56
2:B:238:PHE:HD2	2:B:257:PRO:HB2	1.69	0.56
1:A:936:LYS:HE2	1:A:952:LEU:HD13	1.88	0.56
1:A:730:VAL:HG11	1:A:756:ILE:HD11	1.86	0.56
1:A:191:VAL:HG11	1:A:197:ILE:HD13	1.88	0.56
1:A:42:HIS:HB3	1:A:240:ILE:HD11	1.88	0.55
2:B:73:ALA:O	2:B:75:PRO:HD3	2.07	0.55
1:A:50:HIS:ND1	1:A:57:LEU:HD21	2.20	0.55
2:B:79:GLN:HB3	2:B:295:PHE:CZ	2.41	0.55
1:A:616:GLY:HA2	1:A:691:THR:H	1.72	0.54
1:A:567:PHE:CE2	1:A:569:PHE:HB3	2.43	0.54
1:A:42:HIS:O	1:A:239:ASN:ND2	2.40	0.54
1:A:425:LEU:HB3	1:A:491:HIS:HE1	1.73	0.54
1:A:594:ARG:HB2	1:A:597:VAL:HG23	1.91	0.53
1:A:895:ASP:OD1	1:A:895:ASP:N	2.41	0.53
1:A:230:THR:HG21	1:A:238:ARG:HD2	1.91	0.53
1:A:846:ARG:HD3	1:A:1020:TYR:O	2.08	0.53
2:B:88:ILE:HB	2:B:299:ILE:HG22	1.90	0.53
2:B:170:LYS:HB2	2:B:175:CYS:N	2.23	0.53
2:B:83:ILE:HG22	2:B:84:GLN:N	2.23	0.53
1:A:99:SER:HB3	1:A:138:VAL:HG13	1.91	0.53
2:B:215:GLY:HA2	2:B:274:ILE:HD13	1.91	0.53
2:B:209:LEU:HD21	2:B:283:ILE:HD11	1.91	0.53
1:A:98:PHE:CE2	1:A:335:LEU:HB2	2.44	0.53

Continued on next page...

Continued from previous page...

Atom-1	Atom-2	Interatomic distance (Å)	Clash overlap (Å)
1:A:42:HIS:CE1	1:A:234:PRO:HG3	2.45	0.52
1:A:713:THR:HG22	1:A:730:VAL:HB	1.91	0.52
1:A:688:PHE:HB3	1:A:691:THR:HG21	1.92	0.52
1:A:275:LEU:HB2	1:A:724:LYS:HG2	1.92	0.52
1:A:610:LYS:NZ	1:A:680:LEU:O	2.42	0.52
2:B:188:PRO:HB3	2:B:209:LEU:HD22	1.92	0.52
2:B:113:ARG:HA	2:B:153:LEU:HD11	1.92	0.51
1:A:804:THR:HG22	1:A:978:MET:HE2	1.92	0.51
2:B:186:PHE:CZ	2:B:282:ASN:HB3	2.45	0.51
1:A:205:SER:HA	1:A:227:PRO:HG3	1.91	0.51
2:B:109:LEU:HD23	2:B:153:LEU:HD23	1.93	0.51
1:A:467:GLU:HA	1:A:470:GLU:HG2	1.93	0.51
1:A:741:LYS:HG3	1:A:747:ILE:HD12	1.92	0.51
1:A:516:CYS:SG	1:A:581:LEU:HB2	2.51	0.51
2:B:171:ASP:OD1	2:B:172:GLY:N	2.44	0.51
2:B:174:PRO:HG2	2:B:263:PHE:HB2	1.93	0.51
1:A:217:THR:HG23	1:A:219:GLU:H	1.75	0.51
1:A:306:ILE:O	1:A:310:ILE:HG12	2.11	0.51
2:B:229:TYR:CD1	2:B:261:VAL:HG22	2.46	0.50
1:A:694:GLN:O	1:A:698:ILE:HG12	2.12	0.50
1:A:104:ILE:HG13	1:A:105:GLY:N	2.27	0.50
1:A:46:LEU:HD12	1:A:46:LEU:H	1.75	0.50
2:B:124:GLU:OE1	2:B:134:LYS:NZ	2.45	0.50
1:A:422:ILE:HG23	1:A:504:VAL:HB	1.93	0.50
1:A:850:MET:HA	1:A:854:GLN:HE21	1.77	0.50
1:A:220:SER:HB2	1:A:376:THR:HG21	1.92	0.49
2:B:208:VAL:HG22	2:B:239:PRO:HA	1.93	0.49
1:A:272:ALA:O	1:A:724:LYS:NZ	2.34	0.49
1:A:391:PHE:CE1	1:A:416:TRP:HA	2.47	0.49
1:A:599:ASP:O	1:A:603:LYS:HG2	2.13	0.49
1:A:816:PRO:HB3	1:A:932:LEU:HD22	1.94	0.49
2:B:80:ILE:HD12	2:B:105:ILE:HD12	1.93	0.49
1:A:616:GLY:HA2	1:A:691:THR:N	2.28	0.49
2:B:73:ALA:HB3	2:B:74:PRO:HD3	1.95	0.49
1:A:189:VAL:HG11	1:A:198:PRO:HG2	1.93	0.48
1:A:216:LEU:O	1:A:718:ASN:HB3	2.13	0.48
2:B:119:ASP:HB3	2:B:122:ILE:HG12	1.94	0.48
1:A:112:ALA:HB3	1:A:127:ASN:HD21	1.77	0.48
1:A:30:MET:O	1:A:34:LYS:HG3	2.13	0.48
1:A:377:GLY:HA3	1:A:715:ASP:OD2	2.12	0.48
1:A:814:MET:O	1:A:818:ILE:HG12	2.13	0.48

Continued on next page...

Continued from previous page...

Atom-1	Atom-2	Interatomic distance (Å)	Clash overlap (Å)
1:A:897:GLU:HG3	1:A:901:GLY:HA2	1.95	0.48
1:A:390:TRP:CZ2	1:A:393:ASN:HA	2.48	0.48
1:A:431:PHE:HB2	1:A:466:LYS:NZ	2.28	0.48
1:A:850:MET:SD	1:A:854:GLN:NE2	2.86	0.48
1:A:170:ILE:HG12	1:A:175:LYS:HG2	1.96	0.48
1:A:243:PHE:HD2	1:A:265:MET:HG2	1.78	0.48
1:A:123:PRO:C	1:A:126:ASP:H	2.18	0.48
2:B:25:LEU:H	2:B:29:GLY:HA3	1.78	0.48
1:A:213:ASN:HB3	1:A:217:THR:HG22	1.96	0.47
2:B:166:THR:N	2:B:167:TYR:HA	2.29	0.47
1:A:116:GLN:HB3	1:A:121:GLU:HG2	1.95	0.47
3:G:21:PHE:CE1	3:G:25:ALA:HB2	2.49	0.47
1:A:941:SER:OG	1:A:1001:GLU:OE2	2.20	0.47
2:B:119:ASP:O	2:B:123:PHE:HB2	2.15	0.47
1:A:934:ILE:HB	1:A:1000:ASP:OD2	2.15	0.47
1:A:1003:ARG:HE	1:A:1019:THR:HB	1.80	0.47
2:B:98:TYR:HA	2:B:101:TYR:HD2	1.79	0.47
1:A:425:LEU:HB3	1:A:491:HIS:CE1	2.50	0.46
1:A:780:SER:OG	7:A:1201:HOH:O	2.21	0.46
1:A:358:ASN:HD21	1:A:360:GLU:HG2	1.79	0.46
2:B:235:TYR:O	2:B:237:GLY:N	2.47	0.46
1:A:891:ARG:HA	1:A:906:TYR:CD1	2.51	0.46
1:A:820:LEU:HD12	1:A:820:LEU:HA	1.81	0.46
2:B:26:GLY:HA2	2:B:27:ARG:HA	1.70	0.46
1:A:841:LYS:HB2	1:A:844:ASN:HB3	1.98	0.46
1:A:820:LEU:HD11	1:A:936:LYS:HA	1.97	0.46
2:B:133:LEU:H	2:B:133:LEU:HD12	1.81	0.46
2:B:76:GLY:HA2	2:B:293:GLY:H	1.81	0.46
1:A:43:LYS:NZ	1:A:232:GLU:OE2	2.32	0.46
1:A:390:TRP:HD1	1:A:395:ILE:HG12	1.81	0.45
1:A:654:ASN:HB3	1:A:657:ASP:OD2	2.15	0.45
1:A:490:ILE:HG12	1:A:569:PHE:HZ	1.81	0.45
2:B:101:TYR:O	2:B:105:ILE:HG12	2.16	0.45
2:B:22:LYS:HA	2:B:23:GLU:HA	1.36	0.45
5:A:1104:OBN:H191	5:A:1104:OBN:H8	1.72	0.45
2:B:151:PHE:HE1	2:B:232:LEU:HD23	1.81	0.45
1:A:861:LEU:HD11	2:B:46:LEU:HB3	1.99	0.45
1:A:192:LYS:HG2	1:A:193:GLY:H	1.82	0.45
1:A:920:PHE:O	1:A:924:ILE:HG12	2.16	0.45
1:A:390:TRP:HE3	1:A:585:GLY:HA2	1.82	0.45
2:B:80:ILE:HG22	2:B:108:PHE:CG	2.52	0.45

Continued on next page...

Continued from previous page...

Atom-1	Atom-2	Interatomic distance (Å)	Clash overlap (Å)
2:B:111:LYS:H	2:B:111:LYS:HG3	1.62	0.45
2:B:87:GLU:HA	2:B:298:LYS:O	2.17	0.45
1:A:556:LEU:HD22	1:A:581:LEU:HD23	1.98	0.45
1:A:672:THR:N	1:A:675:GLN:OE1	2.44	0.44
1:A:596:ALA:HB1	1:A:754:ALA:HB2	1.98	0.44
1:A:799:PRO:HG2	1:A:864:PHE:HE1	1.82	0.44
1:A:877:LEU:HD23	1:A:899:SER:HB2	1.99	0.44
1:A:969:CYS:HB3	1:A:972:MET:HG3	1.99	0.44
1:A:94:LEU:HD12	1:A:142:GLY:HA3	1.99	0.44
2:B:208:VAL:HG22	2:B:238:PHE:O	2.17	0.44
2:B:54:ILE:O	2:B:58:LEU:HG	2.17	0.44
1:A:216:LEU:HD11	1:A:243:PHE:O	2.18	0.44
1:A:448:ASP:OD1	1:A:449:ALA:N	2.46	0.44
1:A:474:LYS:HA	1:A:491:HIS:HD2	1.83	0.43
1:A:669:LYS:HB3	1:A:669:LYS:HE2	1.86	0.43
2:B:158:ASN:O	2:B:166:THR:OG1	2.36	0.43
1:A:199:ALA:HB1	1:A:258:TYR:O	2.18	0.43
1:A:300:LEU:O	1:A:304:PHE:HB2	2.19	0.43
2:B:174:PRO:HG3	2:B:266:LEU:HD12	2.00	0.43
1:A:153:SER:O	1:A:157:GLU:HG2	2.19	0.43
1:A:101:LEU:HD22	1:A:290:ILE:HG23	2.00	0.43
1:A:431:PHE:HB2	1:A:466:LYS:HZ1	1.83	0.43
2:B:64:PHE:CZ	2:B:141:ASN:HB2	2.53	0.43
2:B:21:LYS:HG3	2:B:22:LYS:H	1.84	0.43
1:A:210:LYS:HB3	1:A:222:PRO:HB2	1.99	0.43
1:A:569:PHE:HB2	1:A:575:ASN:CG	2.38	0.43
1:A:823:GLU:OE2	1:A:936:LYS:NZ	2.42	0.43
1:A:1013:GLY:O	1:A:1017:LYS:HG2	2.19	0.43
1:A:629:VAL:HG23	1:A:631:ILE:HG13	2.01	0.43
1:A:369:SER:OG	1:A:708:ALA:HB1	2.19	0.43
1:A:50:HIS:HB2	1:A:55:THR:O	2.19	0.43
1:A:484:ASN:OD1	1:A:511:ARG:NH1	2.52	0.42
2:B:51:ILE:O	2:B:55:GLN:HG2	2.19	0.42
1:A:906:TYR:HA	1:A:909:ARG:HE	1.84	0.42
1:A:375:LYS:HG3	1:A:625:ILE:HG21	2.01	0.42
1:A:123:PRO:HG3	5:A:1104:OBN:O19	2.19	0.42
1:A:564:PRO:HG2	1:A:567:PHE:HB2	2.00	0.42
1:A:574:VAL:HG13	1:A:576:PHE:O	2.19	0.42
1:A:724:LYS:HB2	1:A:743:ALA:HB1	2.00	0.42
1:A:289:PHE:HE1	1:A:778:LEU:HD11	1.84	0.42
2:B:52:GLY:O	2:B:56:VAL:HG23	2.19	0.42

Continued on next page...

Continued from previous page...

Atom-1	Atom-2	Interatomic distance (Å)	Clash overlap (Å)
2:B:80:ILE:HG12	2:B:177:ILE:HB	2.02	0.42
2:B:130:PRO:HB3	2:B:208:VAL:HG23	2.02	0.42
1:A:888:TRP:HA	1:A:909:ARG:NH1	2.35	0.42
1:A:391:PHE:HD2	1:A:396:HIS:CD2	2.38	0.42
6:A:1105:CLR:H221	6:A:1105:CLR:H162	1.69	0.42
2:B:134:LYS:HE2	2:B:134:LYS:HB3	1.88	0.41
1:A:81:PRO:HA	1:A:82:PRO:HD3	1.77	0.41
1:A:144:PHE:CE2	1:A:343:THR:HG21	2.56	0.41
1:A:271:LEU:O	1:A:275:LEU:HG	2.19	0.41
1:A:144:PHE:CZ	1:A:343:THR:HG21	2.55	0.41
1:A:330:VAL:HA	1:A:331:PRO:HD3	1.74	0.41
3:G:33:ILE:HG22	3:G:34:LEU:HD23	2.02	0.41
1:A:347:LYS:O	1:A:351:ARG:HG3	2.21	0.41
1:A:897:GLU:HA	1:A:902:GLN:O	2.21	0.41
2:B:80:ILE:CD1	2:B:177:ILE:H	2.30	0.41
2:B:205:ASN:N	2:B:206:PRO:HD2	2.36	0.41
1:A:592:PRO:HA	1:A:593:PRO:HD3	1.94	0.41
2:B:204:TYR:CE1	2:B:235:TYR:HB3	2.56	0.41
1:A:991:PRO:HG3	6:A:1105:CLR:C15	2.51	0.41
1:A:222:PRO:HB3	1:A:248:VAL:HG21	2.02	0.41
1:A:1000:ASP:OD1	1:A:1003:ARG:NH1	2.54	0.41
1:A:329:ASN:HA	1:A:785:ILE:HD11	2.02	0.41
1:A:89:LYS:HG3	1:A:146:TYR:HE1	1.86	0.41
2:B:226:SER:OG	2:B:264:THR:OG1	2.14	0.41
1:A:429:ALA:HB2	1:A:451:GLU:HB3	2.02	0.41
2:B:231:GLY:HA3	2:B:235:TYR:O	2.20	0.41
1:A:590:ILE:HD11	1:A:621:THR:HG23	2.02	0.40
1:A:672:THR:HB	1:A:673:PRO:HD2	2.02	0.40
2:B:204:TYR:C	2:B:206:PRO:HD2	2.42	0.40
2:B:91:ARG:HA	2:B:92:PRO:HD3	1.95	0.40
1:A:859:GLN:HG2	1:A:927:VAL:HB	2.04	0.40
1:A:924:ILE:O	1:A:928:GLN:HG2	2.21	0.40
1:A:95:PHE:O	1:A:99:SER:HB2	2.21	0.40
2:B:21:LYS:HA	2:B:21:LYS:HD2	1.70	0.40
6:A:1105:CLR:H20	6:A:1105:CLR:H183	1.98	0.40
1:A:334:LEU:HD11	1:A:774:ILE:HA	2.03	0.40
2:B:204:TYR:H	2:B:204:TYR:HD2	1.70	0.40
1:A:529:ASP:OD1	1:A:529:ASP:N	2.54	0.40
1:A:556:LEU:CD2	1:A:577:PRO:HG2	2.52	0.40
1:A:560:ASP:N	1:A:560:ASP:OD1	2.54	0.40
2:B:208:VAL:HA	2:B:240:LEU:HD13	2.03	0.40

Continued on next page...

Continued from previous page...

Atom-1	Atom-2	Interatomic distance (Å)	Clash overlap (Å)
2:B:83:ILE:HD11	2:B:88:ILE:HG13	2.03	0.40

There are no symmetry-related clashes.

5.3 Torsion angles [i](#)

5.3.1 Protein backbone [i](#)

In the following table, the Percentiles column shows the percent Ramachandran outliers of the chain as a percentile score with respect to all X-ray entries followed by that with respect to entries of similar resolution.

The Analysed column shows the number of residues for which the backbone conformation was analysed, and the total number of residues.

Mol	Chain	Analysed	Favoured	Allowed	Outliers	Percentiles	
1	A	992/1021 (97%)	948 (96%)	44 (4%)	0	100	100
2	B	279/303 (92%)	257 (92%)	20 (7%)	2 (1%)	26	70
3	G	30/58 (52%)	30 (100%)	0	0	100	100
All	All	1301/1382 (94%)	1235 (95%)	64 (5%)	2 (0%)	52	86

All (2) Ramachandran outliers are listed below:

Mol	Chain	Res	Type
2	B	162	ILE
2	B	199	TYR

5.3.2 Protein sidechains [i](#)

In the following table, the Percentiles column shows the percent sidechain outliers of the chain as a percentile score with respect to all X-ray entries followed by that with respect to entries of similar resolution.

The Analysed column shows the number of residues for which the sidechain conformation was analysed, and the total number of residues.

Mol	Chain	Analysed	Rotameric	Outliers	Percentiles	
1	A	842/861 (98%)	837 (99%)	5 (1%)	90	95
2	B	250/268 (93%)	247 (99%)	3 (1%)	78	90

Continued on next page...

Continued from previous page...

Mol	Chain	Analysed	Rotameric	Outliers	Percentiles	
3	G	26/47 (55%)	26 (100%)	0	100	100
All	All	1118/1176 (95%)	1110 (99%)	8 (1%)	88	94

All (8) residues with a non-rotameric sidechain are listed below:

Mol	Chain	Res	Type
1	A	31	ASP
1	A	119	THR
1	A	490	ILE
1	A	498	GLU
1	A	952	LEU
2	B	80	ILE
2	B	117	GLN
2	B	273	ARG

Some sidechains can be flipped to improve hydrogen bonding and reduce clashes. All (4) such sidechains are listed below:

Mol	Chain	Res	Type
1	A	127	ASN
1	A	404	GLN
1	A	491	HIS
1	A	903	GLN

5.3.3 RNA ⓘ

There are no RNA molecules in this entry.

5.4 Non-standard residues in protein, DNA, RNA chains ⓘ

1 non-standard protein/DNA/RNA residue is modelled in this entry.

In the following table, the Counts columns list the number of bonds (or angles) for which Mogul statistics could be retrieved, the number of bonds (or angles) that are observed in the model and the number of bonds (or angles) that are defined in the chemical component dictionary. The Link column lists molecule types, if any, to which the group is linked. The Z score for a bond length (or angle) is the number of standard deviations the observed value is removed from the expected value. A bond length (or angle) with $|Z| > 2$ is considered an outlier worth inspection. RMSZ is the root-mean-square of all Z scores of the bond lengths (or angles).

Mol	Type	Chain	Res	Link	Bond lengths			Bond angles		
					Counts	RMSZ	# Z > 2	Counts	RMSZ	# Z > 2
1	BFD	A	374	1,4	7,11,12	0.79	0	4,15,17	2.66	1 (25%)

In the following table, the Chirals column lists the number of chiral outliers, the number of chiral centers analysed, the number of these observed in the model and the number defined in the chemical component dictionary. Similar counts are reported in the Torsion and Rings columns. '-' means no outliers of that kind were identified.

Mol	Type	Chain	Res	Link	Chirals	Torsions	Rings
1	BFD	A	374	1,4	-	0/4/11/13	0/0/0/0

There are no bond length outliers.

All (1) bond angle outliers are listed below:

Mol	Chain	Res	Type	Atoms	Z	Observed(°)	Ideal(°)
1	A	374	BFD	OD2-CG-CB	-4.86	114.45	124.74

There are no chirality outliers.

There are no torsion outliers.

There are no ring outliers.

No monomer is involved in short contacts.

5.5 Carbohydrates [i](#)

There are no carbohydrates in this entry.

5.6 Ligand geometry [i](#)

Of 6 ligands modelled in this entry, 3 are monoatomic - leaving 3 for Mogul analysis.

In the following table, the Counts columns list the number of bonds (or angles) for which Mogul statistics could be retrieved, the number of bonds (or angles) that are observed in the model and the number of bonds (or angles) that are defined in the chemical component dictionary. The Link column lists molecule types, if any, to which the group is linked. The Z score for a bond length (or angle) is the number of standard deviations the observed value is removed from the expected value. A bond length (or angle) with $|Z| > 2$ is considered an outlier worth inspection. RMSZ is the root-mean-square of all Z scores of the bond lengths (or angles).

Mol	Type	Chain	Res	Link	Bond lengths			Bond angles		
					Counts	RMSZ	# Z > 2	Counts	RMSZ	# Z > 2
5	OBN	A	1104	-	45,46,46	1.04	4 (8%)	66,76,76	1.58	11 (16%)

Mol	Type	Chain	Res	Link	Bond lengths			Bond angles		
					Counts	RMSZ	# Z > 2	Counts	RMSZ	# Z > 2
6	CLR	A	1105	-	31,31,31	2.27	8 (25%)	48,48,48	2.65	17 (35%)
6	CLR	A	1106	-	31,31,31	2.20	7 (22%)	48,48,48	2.99	17 (35%)

In the following table, the Chirals column lists the number of chiral outliers, the number of chiral centers analysed, the number of these observed in the model and the number defined in the chemical component dictionary. Similar counts are reported in the Torsion and Rings columns. '-' means no outliers of that kind were identified.

Mol	Type	Chain	Res	Link	Chirals	Torsions	Rings
5	OBN	A	1104	-	-	0/11/116/116	0/6/6/6
6	CLR	A	1105	-	-	0/10/68/68	0/4/4/4
6	CLR	A	1106	-	-	0/10/68/68	0/4/4/4

All (19) bond length outliers are listed below:

Mol	Chain	Res	Type	Atoms	Z	Observed(Å)	Ideal(Å)
6	A	1106	CLR	C15-C14	-3.06	1.47	1.54
6	A	1105	CLR	C15-C14	-2.93	1.48	1.54
6	A	1105	CLR	C20-C17	-2.45	1.49	1.54
6	A	1106	CLR	C20-C17	-2.39	1.50	1.54
6	A	1105	CLR	C13-C17	-2.38	1.50	1.55
5	A	1104	OBN	O14-C14	-2.28	1.40	1.44
5	A	1104	OBN	O5-C5	-2.17	1.40	1.44
6	A	1106	CLR	C12-C13	2.12	1.58	1.54
6	A	1105	CLR	C16-C17	2.19	1.59	1.54
5	A	1104	OBN	C4'-C5'	2.37	1.57	1.53
5	A	1104	OBN	C4-C5	2.39	1.56	1.53
6	A	1106	CLR	C16-C17	2.45	1.59	1.54
6	A	1105	CLR	C12-C13	3.05	1.59	1.54
6	A	1106	CLR	C8-C14	3.53	1.60	1.53
6	A	1105	CLR	C8-C14	3.70	1.60	1.53
6	A	1106	CLR	C11-C9	4.47	1.61	1.53
6	A	1105	CLR	C11-C9	4.83	1.62	1.53
6	A	1105	CLR	C6-C5	8.37	1.53	1.33
6	A	1106	CLR	C6-C5	8.45	1.53	1.33

All (45) bond angle outliers are listed below:

Mol	Chain	Res	Type	Atoms	Z	Observed(°)	Ideal(°)
6	A	1106	CLR	C7-C6-C5	-7.18	109.49	125.00
6	A	1105	CLR	C4-C5-C6	-6.90	109.22	120.60
6	A	1106	CLR	C12-C13-C17	-6.64	106.82	116.58

Continued on next page...

Continued from previous page...

Mol	Chain	Res	Type	Atoms	Z	Observed(°)	Ideal(°)
6	A	1105	CLR	C12-C13-C17	-6.53	106.99	116.58
6	A	1106	CLR	C19-C10-C9	-6.47	103.59	111.70
6	A	1105	CLR	C7-C6-C5	-5.82	112.41	125.00
6	A	1106	CLR	C10-C5-C6	-5.78	112.37	122.93
6	A	1105	CLR	C19-C10-C9	-5.54	104.76	111.70
6	A	1106	CLR	C8-C7-C6	-5.34	104.54	112.76
6	A	1105	CLR	C10-C5-C6	-4.84	114.09	122.93
6	A	1105	CLR	C16-C17-C13	-3.58	99.63	103.83
6	A	1106	CLR	C15-C14-C13	-3.50	99.72	103.83
6	A	1106	CLR	C21-C20-C22	-3.49	104.66	110.33
6	A	1106	CLR	C4-C5-C6	-3.47	114.88	120.60
6	A	1106	CLR	C18-C13-C12	-2.81	105.70	110.53
5	A	1104	OBN	O2'-C2'-C1'	-2.73	103.96	110.01
5	A	1104	OBN	C6'-C5'-C4'	-2.71	107.77	113.02
6	A	1105	CLR	C19-C10-C1	-2.54	105.31	109.39
6	A	1106	CLR	C16-C15-C14	-2.39	100.31	105.11
5	A	1104	OBN	O3'-C3'-C2'	-2.39	104.98	110.36
5	A	1104	OBN	C19-C10-C9	-2.33	105.25	112.98
5	A	1104	OBN	O1-C1-C10	-2.32	105.31	110.12
5	A	1104	OBN	C7-C8-C14	-2.09	109.26	111.34
6	A	1106	CLR	C11-C12-C13	-2.06	109.10	112.81
6	A	1105	CLR	C2-C1-C10	2.01	117.00	112.78
6	A	1105	CLR	C11-C9-C8	2.07	114.80	111.73
5	A	1104	OBN	C14-C13-C17	2.50	106.62	103.53
6	A	1105	CLR	C1-C2-C3	2.63	113.91	110.41
6	A	1105	CLR	C17-C13-C14	2.64	103.18	100.09
6	A	1106	CLR	C11-C9-C8	2.67	115.70	111.73
6	A	1106	CLR	C7-C8-C9	2.75	113.39	109.73
6	A	1105	CLR	C12-C11-C9	2.78	118.12	113.09
6	A	1105	CLR	C11-C9-C10	2.79	117.25	113.13
5	A	1104	OBN	O5'-C1'-C2'	2.93	116.37	110.28
6	A	1105	CLR	C21-C20-C17	3.53	118.43	112.99
5	A	1104	OBN	C4-C5-C10	3.62	115.00	111.84
6	A	1105	CLR	C7-C8-C14	4.05	117.24	110.87
6	A	1106	CLR	C7-C8-C14	4.15	117.38	110.87
6	A	1105	CLR	C7-C8-C9	4.16	115.28	109.73
5	A	1104	OBN	O5'-C5'-C4'	4.38	117.16	109.58
6	A	1106	CLR	C1-C10-C9	5.37	117.06	108.67
6	A	1105	CLR	C1-C10-C9	5.43	117.16	108.67
5	A	1104	OBN	C1'-O5'-C5'	5.57	123.95	113.76
6	A	1106	CLR	C18-C13-C14	6.00	123.15	111.76
6	A	1106	CLR	C21-C20-C17	6.27	122.65	112.99

There are no chirality outliers.

There are no torsion outliers.

There are no ring outliers.

2 monomers are involved in 6 short contacts:

Mol	Chain	Res	Type	Clashes	Symm-Clashes
5	A	1104	OBN	3	0
6	A	1105	CLR	3	0

5.7 Other polymers [i](#)

There are no such residues in this entry.

5.8 Polymer linkage issues [i](#)

There are no chain breaks in this entry.

6 Fit of model and data ⓘ

6.1 Protein, DNA and RNA chains ⓘ

In the following table, the column labelled ‘#RSRZ> 2’ contains the number (and percentage) of RSRZ outliers, followed by percent RSRZ outliers for the chain as percentile scores relative to all X-ray entries and entries of similar resolution. The OWAB column contains the minimum, median, 95th percentile and maximum values of the occupancy-weighted average B-factor per residue. The column labelled ‘Q< 0.9’ lists the number of (and percentage) of residues with an average occupancy less than 0.9.

Mol	Chain	Analysed	<RSRZ>	#RSRZ>2	OWAB(Å ²)	Q<0.9
1	A	994/1021 (97%)	0.13	37 (3%) 45 34	61, 110, 163, 195	0
2	B	281/303 (92%)	0.18	12 (4%) 39 28	70, 114, 153, 167	0
3	G	32/58 (55%)	-0.26	0 100 100	61, 71, 91, 92	0
All	All	1307/1382 (94%)	0.13	49 (3%) 45 34	61, 112, 160, 195	0

All (49) RSRZ outliers are listed below:

Mol	Chain	Res	Type	RSRZ
2	B	199	TYR	5.4
2	B	200	PRO	4.5
1	A	405	SER	4.5
1	A	402	GLU	4.0
1	A	85	PRO	4.0
1	A	175	LYS	3.7
2	B	218	ASP	3.6
1	A	246	ASN	3.5
1	A	47	ASP	3.5
1	A	531	GLU	3.5
1	A	651	SER	3.3
2	B	270	THR	3.3
1	A	68	GLU	3.3
1	A	158	SER	3.2
1	A	530	GLU	3.1
1	A	44	LEU	3.0
1	A	38	SER	3.0
1	A	70	LEU	3.0
1	A	39	MET	2.9
1	A	482	SER	2.8
1	A	496	ALA	2.8
1	A	523	GLY	2.7
1	A	561	GLU	2.7

Continued on next page...

Continued from previous page...

Mol	Chain	Res	Type	RSRZ
1	A	403	ASN	2.7
1	A	164	PRO	2.6
1	A	573	ASP	2.5
2	B	135	ASP	2.5
1	A	435	GLN	2.5
1	A	71	ALA	2.5
2	B	198	THR	2.4
2	B	118	LYS	2.4
1	A	163	VAL	2.4
1	A	653	VAL	2.4
2	B	196	LEU	2.3
1	A	434	ASN	2.3
1	A	437	ASN	2.3
2	B	220	ASP	2.3
2	B	27	ARG	2.2
1	A	433	ALA	2.1
1	A	124	GLN	2.1
1	A	733	GLY	2.1
2	B	192	LYS	2.1
1	A	652	GLN	2.1
1	A	75	PRO	2.1
1	A	650	VAL	2.1
1	A	560	ASP	2.1
2	B	23	GLU	2.1
1	A	554	CYS	2.0
1	A	162	MET	2.0

6.2 Non-standard residues in protein, DNA, RNA chains [i](#)

In the following table, the Atoms column lists the number of modelled atoms in the group and the number defined in the chemical component dictionary. LLDF column lists the quality of electron density of the group with respect to its neighbouring residues in protein, DNA or RNA chains. The B-factors column lists the minimum, median, 95th percentile and maximum values of B factors of atoms in the group. The column labelled 'Q< 0.9' lists the number of atoms with occupancy less than 0.9.

Mol	Type	Chain	Res	Atoms	RSCC	RSR	LLDF	B-factors(Å ²)	Q<0.9
1	BFD	A	374	12/13	0.85	0.29	-	97,106,108,110	0

6.3 Carbohydrates [i](#)

There are no carbohydrates in this entry.

6.4 Ligands [i](#)

In the following table, the Atoms column lists the number of modelled atoms in the group and the number defined in the chemical component dictionary. LLDF column lists the quality of electron density of the group with respect to its neighbouring residues in protein, DNA or RNA chains. The B-factors column lists the minimum, median, 95th percentile and maximum values of B factors of atoms in the group. The column labelled 'Q< 0.9' lists the number of atoms with occupancy less than 0.9.

Mol	Type	Chain	Res	Atoms	RSCC	RSR	LLDF	B-factors(Å ²)	Q<0.9
6	CLR	A	1105	28/28	0.75	0.44	3.19	86,91,95,96	0
6	CLR	A	1106	28/28	0.85	0.34	2.49	86,88,91,92	0
4	MG	A	1102	1/1	0.94	0.42	2.07	85,85,85,85	0
5	OBN	A	1104	41/41	0.87	0.26	-0.24	86,91,95,97	0
4	MG	A	1103	1/1	0.79	0.25	-1.71	97,97,97,97	0
4	MG	A	1101	1/1	0.94	0.08	-4.43	89,89,89,89	0

6.5 Other polymers [i](#)

There are no such residues in this entry.