



Full wwPDB X-ray Structure Validation Report ⓘ

Oct 11, 2016 – 01:17 PM EDT

PDB ID : 4XG9
Title : Crystal structure of an inhibitor-bound Syk
Authors : Lee, S.J.; Choi, J.; Han, B.G.; Song, H.; Koh, J.S.; Lee, B.I.
Deposited on : 2014-12-30
Resolution : 2.91 Å(reported)

This is a Full wwPDB X-ray Structure Validation Report for a publicly released PDB entry.

We welcome your comments at validation@mail.wwpdb.org

A user guide is available at

<http://wwpdb.org/validation/2016/XrayValidationReportHelp>

with specific help available everywhere you see the ⓘ symbol.

The following versions of software and data (see [references ⓘ](#)) were used in the production of this report:

MolProbity : 4.02b-467
Mogul : 1.7.1 (RC1), CSD as537be (2016)
Xtriage (Phenix) : 1.9-1692
EDS : rb-20027939
Percentile statistics : 20151230.v01 (using entries in the PDB archive December 30th 2015)
Refmac : 5.8.0135
CCP4 : 6.5.0
Ideal geometry (proteins) : Engh & Huber (2001)
Ideal geometry (DNA, RNA) : Parkinson et al. (1996)
Validation Pipeline (wwPDB-VP) : rb-20027939

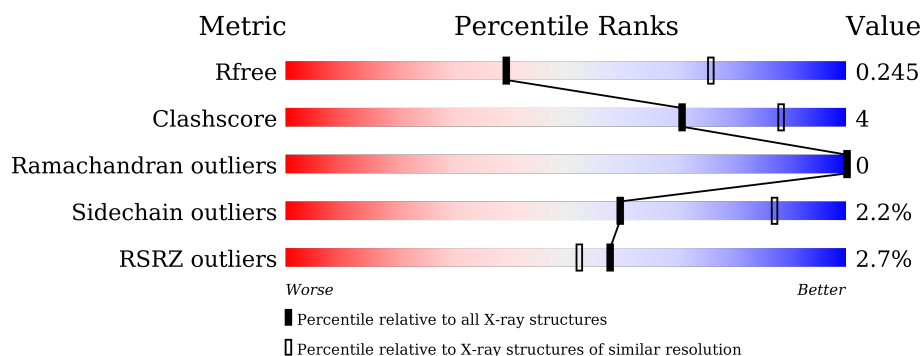
1 Overall quality at a glance ⓘ

The following experimental techniques were used to determine the structure:

X-RAY DIFFRACTION

The reported resolution of this entry is 2.91 Å.

Percentile scores (ranging between 0-100) for global validation metrics of the entry are shown in the following graphic. The table shows the number of entries on which the scores are based.



Metric	Whole archive (#Entries)	Similar resolution (#Entries, resolution range(Å))
R_{free}	91344	1643 (2.94-2.90)
Clashscore	102246	1871 (2.94-2.90)
Ramachandran outliers	100387	1824 (2.94-2.90)
Sidechain outliers	100360	1826 (2.94-2.90)
RSRZ outliers	91569	1650 (2.94-2.90)

The table below summarises the geometric issues observed across the polymeric chains and their fit to the electron density. The red, orange, yellow and green segments on the lower bar indicate the fraction of residues that contain outliers for ≥ 3 , 2, 1 and 0 types of geometric quality criteria. A grey segment represents the fraction of residues that are not modelled. The numeric value for each fraction is indicated below the corresponding segment, with a dot representing fractions $\leq 5\%$. The upper red bar (where present) indicates the fraction of residues that have poor fit to the electron density. The numeric value is given above the bar.

Mol	Chain	Length	Quality of chain
1	A	290	<div> <div>2%</div> <div> <div></div> <div>83%</div> <div>6%</div> <div>11%</div> </div> </div>
1	B	290	<div> <div>2%</div> <div> <div></div> <div>85%</div> <div>5%</div> <div>9%</div> </div> </div>

The following table lists non-polymeric compounds, carbohydrate monomers and non-standard residues in protein, DNA, RNA chains that are outliers for geometric or electron-density-fit criteria:

Mol	Type	Chain	Res	Chirality	Geometry	Clashes	Electron density
2	X9G	B	700	-	-	X	-

2 Entry composition

There are 3 unique types of molecules in this entry. The entry contains 4325 atoms, of which 0 are hydrogens and 0 are deuteriums.

In the tables below, the ZeroOcc column contains the number of atoms modelled with zero occupancy, the AltConf column contains the number of residues with at least one atom in alternate conformation and the Trace column contains the number of residues modelled with at most 2 atoms.

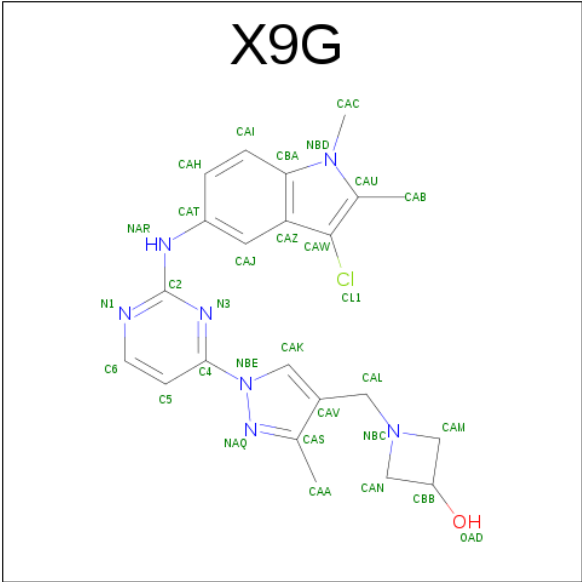
- Molecule 1 is a protein called Tyrosine-protein kinase SYK.

Mol	Chain	Residues	Atoms					ZeroOcc	AltConf	Trace
1	A	259	Total	C	N	O	S	0	0	0
			2106	1354	352	381	19			
1	B	265	Total	C	N	O	S	0	0	0
			2154	1383	361	391	19			

There are 20 discrepancies between the modelled and reference sequences:

Chain	Residue	Modelled	Actual	Comment	Reference
A	636	LEU	-	expression tag	UNP P43405
A	637	GLU	-	expression tag	UNP P43405
A	638	HIS	-	expression tag	UNP P43405
A	639	HIS	-	expression tag	UNP P43405
A	640	HIS	-	expression tag	UNP P43405
A	641	HIS	-	expression tag	UNP P43405
A	642	HIS	-	expression tag	UNP P43405
A	643	HIS	-	expression tag	UNP P43405
A	644	HIS	-	expression tag	UNP P43405
A	645	HIS	-	expression tag	UNP P43405
B	636	LEU	-	expression tag	UNP P43405
B	637	GLU	-	expression tag	UNP P43405
B	638	HIS	-	expression tag	UNP P43405
B	639	HIS	-	expression tag	UNP P43405
B	640	HIS	-	expression tag	UNP P43405
B	641	HIS	-	expression tag	UNP P43405
B	642	HIS	-	expression tag	UNP P43405
B	643	HIS	-	expression tag	UNP P43405
B	644	HIS	-	expression tag	UNP P43405
B	645	HIS	-	expression tag	UNP P43405

- Molecule 2 is 1-[(1-{2-[(3-chloro-1,2-dimethyl-1H-indol-5-yl)amino]pyrimidin-4-yl}-3-methyl-1H-pyrazol-4-yl)methyl]azetidin-3-ol (three-letter code: X9G) (formula: C₂₂H₂₄ClN₇O).



Mol	Chain	Residues	Atoms					ZeroOcc	AltConf
2	A	1	Total	C	Cl	N	O	0	0
			31	22	1	7	1		
2	B	1	Total	C	Cl	N	O	0	0
			31	22	1	7	1		

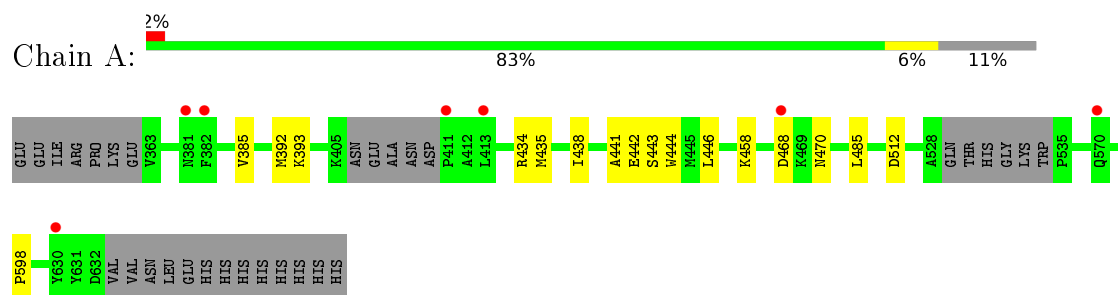
- Molecule 3 is water.

Mol	Chain	Residues	Atoms		ZeroOcc	AltConf
3	A	1	Total	O	0	0
			1	1		
3	B	2	Total	O	0	0
			2	2		

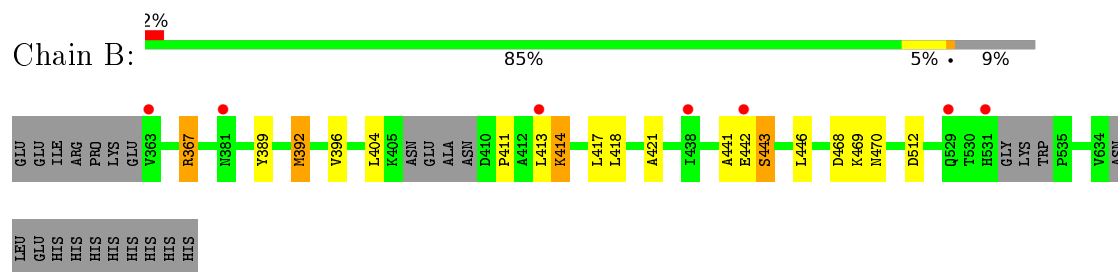
3 Residue-property plots [i](#)

These plots are drawn for all protein, RNA and DNA chains in the entry. The first graphic for a chain summarises the proportions of errors displayed in the second graphic. The second graphic shows the sequence view annotated by issues in geometry and electron density. Residues are color-coded according to the number of geometric quality criteria for which they contain at least one outlier: green = 0, yellow = 1, orange = 2 and red = 3 or more. A red dot above a residue indicates a poor fit to the electron density ($RSRZ > 2$). Stretches of 2 or more consecutive residues without any outlier are shown as a green connector. Residues present in the sample, but not in the model, are shown in grey.

• Molecule 1: Tyrosine-protein kinase SYK



• Molecule 1: Tyrosine-protein kinase SYK



4 Data and refinement statistics

Property	Value	Source
Space group	P 1	Depositor
Cell constants a, b, c, α , β , γ	40.07Å 42.09Å 87.90Å 99.90° 90.42° 100.66°	Depositor
Resolution (Å)	50.00 – 2.91 36.37 – 2.91	Depositor EDS
% Data completeness (in resolution range)	97.6 (50.00-2.91) 92.6 (36.37-2.91)	Depositor EDS
R_{merge}	(Not available)	Depositor
R_{sym}	(Not available)	Depositor
$\langle I/\sigma(I) \rangle$ ¹	1.91 (at 2.90Å)	Xtriage
Refinement program	REFMAC 5.8.0103	Depositor
R, R_{free}	0.208 , 0.241 0.216 , 0.245	Depositor DCC
R_{free} test set	554 reflections (4.89%)	DCC
Wilson B-factor (Å ²)	48.1	Xtriage
Anisotropy	0.021	Xtriage
Bulk solvent k_{sol} (e/Å ³), B_{sol} (Å ²)	0.32 , 27.4	EDS
L-test for twinning ²	$\langle L \rangle = 0.49$, $\langle L^2 \rangle = 0.33$	Xtriage
Estimated twinning fraction	No twinning to report.	Xtriage
F_o, F_c correlation	0.91	EDS
Total number of atoms	4325	wwPDB-VP
Average B, all atoms (Å ²)	48.0	wwPDB-VP

Xtriage's analysis on translational NCS is as follows: *The largest off-origin peak in the Patterson function is 7.94% of the height of the origin peak. No significant pseudotranslation is detected.*

¹Intensities estimated from amplitudes.

²Theoretical values of $\langle |L| \rangle$, $\langle L^2 \rangle$ for acentric reflections are 0.5, 0.333 respectively for untwinned datasets, and 0.375, 0.2 for perfectly twinned datasets.

5 Model quality [i](#)

5.1 Standard geometry [i](#)

Bond lengths and bond angles in the following residue types are not validated in this section: X9G

The Z score for a bond length (or angle) is the number of standard deviations the observed value is removed from the expected value. A bond length (or angle) with $|Z| > 5$ is considered an outlier worth inspection. RMSZ is the root-mean-square of all Z scores of the bond lengths (or angles).

Mol	Chain	Bond lengths		Bond angles	
		RMSZ	$\# Z > 5$	RMSZ	$\# Z > 5$
1	A	0.46	0/2152	0.67	0/2895
1	B	0.46	0/2201	0.69	1/2964 (0.0%)
All	All	0.46	0/4353	0.68	1/5859 (0.0%)

Chiral center outliers are detected by calculating the chiral volume of a chiral center and verifying if the center is modelled as a planar moiety or with the opposite hand. A planarity outlier is detected by checking planarity of atoms in a peptide group, atoms in a mainchain group or atoms of a sidechain that are expected to be planar.

Mol	Chain	#Chirality outliers	#Planarity outliers
1	B	0	1

There are no bond length outliers.

All (1) bond angle outliers are listed below:

Mol	Chain	Res	Type	Atoms	Z	Observed($^{\circ}$)	Ideal($^{\circ}$)
1	B	392	MET	N-CA-C	-6.89	92.39	111.00

There are no chirality outliers.

All (1) planarity outliers are listed below:

Mol	Chain	Res	Type	Group
1	B	392	MET	Peptide

5.2 Too-close contacts [i](#)

In the following table, the Non-H and H(model) columns list the number of non-hydrogen atoms and hydrogen atoms in the chain respectively. The H(added) column lists the number of hydrogen atoms added and optimized by MolProbity. The Clashes column lists the number of clashes within

the asymmetric unit, whereas Symm-Clashes lists symmetry related clashes.

Mol	Chain	Non-H	H(model)	H(added)	Clashes	Symm-Clashes
1	A	2106	0	2104	15	0
1	B	2154	0	2147	18	0
2	A	31	0	24	4	0
2	B	31	0	23	10	0
3	A	1	0	0	0	0
3	B	2	0	0	0	0
All	All	4325	0	4298	38	0

The all-atom clashscore is defined as the number of clashes found per 1000 atoms (including hydrogen atoms). The all-atom clashscore for this structure is 4.

All (38) close contacts within the same asymmetric unit are listed below, sorted by their clash magnitude.

Atom-1	Atom-2	Interatomic distance (Å)	Clash overlap (Å)
1:B:512:ASP:OD1	2:B:700:X9G:H3	1.44	1.17
1:B:512:ASP:CG	2:B:700:X9G:H3	1.99	0.83
2:B:700:X9G:N3	2:B:700:X9G:H17	1.97	0.79
1:A:441:ALA:O	1:A:442:GLU:C	2.24	0.73
2:B:700:X9G:CAK	2:B:700:X9G:CAN	2.72	0.68
2:B:700:X9G:CAK	2:B:700:X9G:H8	2.23	0.66
1:B:441:ALA:O	1:B:442:GLU:C	2.29	0.66
1:A:392:MET:O	1:A:393:LYS:C	2.32	0.66
1:B:512:ASP:OD1	2:B:700:X9G:CAM	2.34	0.66
1:B:367:ARG:CD	1:B:367:ARG:O	2.51	0.58
1:A:441:ALA:C	1:A:442:GLU:HG2	2.25	0.57
1:A:441:ALA:O	1:A:443:SER:O	2.25	0.55
1:A:441:ALA:O	1:A:442:GLU:CG	2.55	0.55
1:A:468:ASP:OD2	1:A:598:PRO:HD3	2.09	0.53
1:B:404:LEU:HD11	1:B:413:LEU:HB3	1.91	0.52
1:B:389:TYR:HB3	1:B:396:VAL:HG11	1.91	0.52
1:B:512:ASP:OD2	2:B:700:X9G:H3	2.11	0.51
1:A:512:ASP:OD2	2:A:700:X9G:H3	2.12	0.50
1:B:441:ALA:O	1:B:443:SER:O	2.29	0.50
1:B:367:ARG:CD	1:B:367:ARG:C	2.80	0.49
1:B:414:LYS:O	1:B:418:LEU:HG	2.12	0.49
1:B:421:ALA:HB2	1:B:446:LEU:HD13	1.95	0.49
2:A:700:X9G:N3	2:A:700:X9G:H17	2.27	0.49
1:A:438:ILE:CG2	1:A:444:TRP:HZ3	2.27	0.47
1:A:441:ALA:C	1:A:442:GLU:CG	2.84	0.47
1:A:512:ASP:CG	2:A:700:X9G:H3	2.36	0.46

Continued on next page...

Continued from previous page...

Atom-1	Atom-2	Interatomic distance (Å)	Clash overlap (Å)
1:B:413:LEU:N	1:B:413:LEU:HD22	2.30	0.46
1:B:512:ASP:OD2	2:B:700:X9G:CAM	2.65	0.45
2:B:700:X9G:N3	2:B:700:X9G:CAJ	2.59	0.44
1:A:438:ILE:CG2	1:A:444:TRP:CZ3	3.01	0.44
1:A:435:MET:HG3	1:A:446:LEU:HD11	1.99	0.44
1:A:441:ALA:O	1:A:442:GLU:HG3	2.19	0.43
1:B:512:ASP:CG	2:B:700:X9G:CAM	2.80	0.43
1:A:385:VAL:HG21	2:A:700:X9G:H11	2.01	0.42
1:B:468:ASP:OD1	1:B:469:LYS:N	2.50	0.42
1:B:441:ALA:O	1:B:443:SER:N	2.52	0.41
1:A:438:ILE:HG21	1:A:444:TRP:HZ3	1.86	0.41
1:B:367:ARG:O	1:B:367:ARG:HD2	2.20	0.40

There are no symmetry-related clashes.

5.3 Torsion angles ⓘ

5.3.1 Protein backbone ⓘ

In the following table, the Percentiles column shows the percent Ramachandran outliers of the chain as a percentile score with respect to all X-ray entries followed by that with respect to entries of similar resolution.

The Analysed column shows the number of residues for which the backbone conformation was analysed, and the total number of residues.

Mol	Chain	Analysed	Favoured	Allowed	Outliers	Percentiles	
1	A	253/290 (87%)	241 (95%)	12 (5%)	0	100	100
1	B	259/290 (89%)	247 (95%)	12 (5%)	0	100	100
All	All	512/580 (88%)	488 (95%)	24 (5%)	0	100	100

There are no Ramachandran outliers to report.

5.3.2 Protein sidechains ⓘ

In the following table, the Percentiles column shows the percent sidechain outliers of the chain as a percentile score with respect to all X-ray entries followed by that with respect to entries of similar resolution.

The Analysed column shows the number of residues for which the sidechain conformation was

analysed, and the total number of residues.

Mol	Chain	Analysed	Rotameric	Outliers	Percentiles	
1	A	225/254 (89%)	221 (98%)	4 (2%)	66	90
1	B	231/254 (91%)	225 (97%)	6 (3%)	54	84
All	All	456/508 (90%)	446 (98%)	10 (2%)	60	87

All (10) residues with a non-rotameric sidechain are listed below:

Mol	Chain	Res	Type
1	A	434	ARG
1	A	458	LYS
1	A	470	ASN
1	A	485	LEU
1	B	367	ARG
1	B	411	PRO
1	B	414	LYS
1	B	417	LEU
1	B	443	SER
1	B	470	ASN

Some sidechains can be flipped to improve hydrogen bonding and reduce clashes. All (7) such sidechains are listed below:

Mol	Chain	Res	Type
1	A	470	ASN
1	A	505	GLN
1	A	506	HIS
1	A	615	ASN
1	B	463	ASN
1	B	465	HIS
1	B	615	ASN

5.3.3 RNA ⓘ

There are no RNA molecules in this entry.

5.4 Non-standard residues in protein, DNA, RNA chains ⓘ

There are no non-standard protein/DNA/RNA residues in this entry.

5.5 Carbohydrates ⓘ

There are no carbohydrates in this entry.

5.6 Ligand geometry ⓘ

2 ligands are modelled in this entry.

In the following table, the Counts columns list the number of bonds (or angles) for which Mogul statistics could be retrieved, the number of bonds (or angles) that are observed in the model and the number of bonds (or angles) that are defined in the chemical component dictionary. The Link column lists molecule types, if any, to which the group is linked. The Z score for a bond length (or angle) is the number of standard deviations the observed value is removed from the expected value. A bond length (or angle) with $|Z| > 2$ is considered an outlier worth inspection. RMSZ is the root-mean-square of all Z scores of the bond lengths (or angles).

Mol	Type	Chain	Res	Link	Bond lengths			Bond angles		
					Counts	RMSZ	$\# Z > 2$	Counts	RMSZ	$\# Z > 2$
2	X9G	A	700	-	30,35,35	2.88	11 (36%)	28,52,52	2.67	11 (39%)
2	X9G	B	700	-	30,35,35	6.06	18 (60%)	28,52,52	3.34	12 (42%)

In the following table, the Chirals column lists the number of chiral outliers, the number of chiral centers analysed, the number of these observed in the model and the number defined in the chemical component dictionary. Similar counts are reported in the Torsion and Rings columns. '-' means no outliers of that kind were identified.

Mol	Type	Chain	Res	Link	Chirals	Torsions	Rings
2	X9G	A	700	-	-	0/9/20/20	0/5/5/5
2	X9G	B	700	-	-	0/9/20/20	0/5/5/5

All (29) bond length outliers are listed below:

Mol	Chain	Res	Type	Atoms	Z	Observed(Å)	Ideal(Å)
2	B	700	X9G	NAQ-NBE	-23.63	0.94	1.39
2	B	700	X9G	CAU-NBD	-14.26	1.26	1.39
2	B	700	X9G	CAV-CAS	-8.53	1.28	1.41
2	A	700	X9G	CAU-NBD	-7.41	1.32	1.39
2	A	700	X9G	NAQ-NBE	-7.09	1.26	1.39
2	B	700	X9G	C4-NBE	-6.22	1.32	1.45
2	B	700	X9G	CAZ-CBA	-5.93	1.32	1.41
2	B	700	X9G	CAI-CBA	-5.48	1.29	1.41
2	A	700	X9G	CAV-CAS	-5.36	1.33	1.41
2	B	700	X9G	CAW-CAU	-5.25	1.29	1.38
2	A	700	X9G	C4-NBE	-4.82	1.35	1.45

Continued on next page...

Continued from previous page...

Mol	Chain	Res	Type	Atoms	Z	Observed(Å)	Ideal(Å)
2	B	700	X9G	CAN-CBB	-4.73	1.46	1.53
2	B	700	X9G	CAT-NAR	-4.57	1.31	1.40
2	B	700	X9G	CAJ-CAZ	-4.27	1.33	1.42
2	A	700	X9G	CAZ-CBA	-4.02	1.35	1.41
2	B	700	X9G	C2-NAR	-3.75	1.29	1.36
2	A	700	X9G	CAJ-CAZ	-3.49	1.35	1.42
2	B	700	X9G	CAK-NBE	-3.45	1.31	1.36
2	A	700	X9G	CAI-CBA	-3.38	1.34	1.41
2	B	700	X9G	CAC-NBD	-3.37	1.40	1.47
2	A	700	X9G	CAW-CAU	-3.07	1.32	1.38
2	B	700	X9G	CAM-CBB	-2.85	1.49	1.53
2	B	700	X9G	CAW-CL1	-2.56	1.62	1.73
2	B	700	X9G	OAD-CBB	-2.45	1.36	1.43
2	B	700	X9G	C2-N1	-2.41	1.31	1.34
2	B	700	X9G	CAH-CAT	-2.30	1.35	1.39
2	A	700	X9G	CAJ-CAT	2.35	1.42	1.37
2	A	700	X9G	CAL-CAV	2.62	1.56	1.51
2	A	700	X9G	C6-N1	2.90	1.40	1.34

All (23) bond angle outliers are listed below:

Mol	Chain	Res	Type	Atoms	Z	Observed(°)	Ideal(°)
2	B	700	X9G	CAC-NBD-CAU	-8.47	115.80	124.09
2	A	700	X9G	N1-C2-N3	-7.99	118.15	126.66
2	B	700	X9G	CAU-CAW-CL1	-6.21	118.35	125.89
2	B	700	X9G	C5-C6-N1	-6.13	116.69	123.88
2	B	700	X9G	N1-C2-N3	-4.10	122.29	126.66
2	A	700	X9G	C5-C6-N1	-3.34	119.96	123.88
2	B	700	X9G	CAI-CBA-NBD	-3.31	128.18	132.22
2	A	700	X9G	C5-C4-N3	-2.75	118.03	123.64
2	A	700	X9G	CAH-CAT-CAJ	-2.64	115.65	119.59
2	B	700	X9G	CAT-NAR-C2	-2.60	122.77	129.34
2	B	700	X9G	CAH-CAT-NAR	-2.42	112.65	120.66
2	B	700	X9G	C5-C4-N3	-2.32	118.90	123.64
2	B	700	X9G	CAV-CAK-NBE	-2.13	104.54	107.75
2	A	700	X9G	C6-C5-C4	2.06	118.62	116.57
2	A	700	X9G	CAJ-CAT-NAR	2.17	128.92	122.50
2	A	700	X9G	CAV-CAL-NBC	2.34	116.81	112.76
2	A	700	X9G	NAR-C2-N3	2.42	124.55	116.92
2	A	700	X9G	C2-N3-C4	2.91	124.56	114.50
2	A	700	X9G	CAC-NBD-CAU	3.14	127.17	124.09
2	B	700	X9G	CAA-CAS-NAQ	3.34	127.37	119.85

Continued on next page...

Continued from previous page...

Mol	Chain	Res	Type	Atoms	Z	Observed($^{\circ}$)	Ideal($^{\circ}$)
2	B	700	X9G	C6-C5-C4	4.49	121.05	116.57
2	A	700	X9G	C6-N1-C2	6.79	120.67	115.42
2	B	700	X9G	C6-N1-C2	7.83	121.47	115.42

There are no chirality outliers.

There are no torsion outliers.

There are no ring outliers.

2 monomers are involved in 14 short contacts:

Mol	Chain	Res	Type	Clashes	Symm-Clashes
2	A	700	X9G	4	0
2	B	700	X9G	10	0

5.7 Other polymers [i](#)

There are no such residues in this entry.

5.8 Polymer linkage issues [i](#)

There are no chain breaks in this entry.

6 Fit of model and data [i](#)

6.1 Protein, DNA and RNA chains [i](#)

In the following table, the column labelled ‘#RSRZ> 2’ contains the number (and percentage) of RSRZ outliers, followed by percent RSRZ outliers for the chain as percentile scores relative to all X-ray entries and entries of similar resolution. The OWAB column contains the minimum, median, 95th percentile and maximum values of the occupancy-weighted average B-factor per residue. The column labelled ‘Q< 0.9’ lists the number of (and percentage) of residues with an average occupancy less than 0.9.

Mol	Chain	Analysed	<RSRZ>	#RSRZ>2	OWAB(Å ²)	Q<0.9
1	A	259/290 (89%)	0.07	7 (2%) 58 52	27, 46, 80, 101	0
1	B	265/290 (91%)	0.15	7 (2%) 59 54	25, 43, 82, 105	0
All	All	524/580 (90%)	0.11	14 (2%) 58 52	25, 44, 80, 105	0

All (14) RSRZ outliers are listed below:

Mol	Chain	Res	Type	RSRZ
1	B	531	HIS	4.3
1	B	381	ASN	4.0
1	B	529	GLN	3.2
1	A	630	TYR	2.7
1	A	411	PRO	2.7
1	B	363	VAL	2.6
1	B	442	GLU	2.4
1	B	438	ILE	2.4
1	B	413	LEU	2.2
1	A	381	ASN	2.1
1	A	413	LEU	2.1
1	A	570	GLN	2.1
1	A	382	PHE	2.0
1	A	468	ASP	2.0

6.2 Non-standard residues in protein, DNA, RNA chains [i](#)

There are no non-standard protein/DNA/RNA residues in this entry.

6.3 Carbohydrates [i](#)

There are no carbohydrates in this entry.

6.4 Ligands [i](#)

In the following table, the Atoms column lists the number of modelled atoms in the group and the number defined in the chemical component dictionary. LLDF column lists the quality of electron density of the group with respect to its neighbouring residues in protein, DNA or RNA chains. The B-factors column lists the minimum, median, 95th percentile and maximum values of B factors of atoms in the group. The column labelled 'Q< 0.9' lists the number of atoms with occupancy less than 0.9.

Mol	Type	Chain	Res	Atoms	RSCC	RSR	LLDF	B-factors(\AA^2)	Q<0.9
2	X9G	B	700	31/31	0.92	0.20	0.12	38,41,44,44	0
2	X9G	A	700	31/31	0.95	0.17	-0.30	36,38,40,40	0

6.5 Other polymers [i](#)

There are no such residues in this entry.