



Full wwPDB X-ray Structure Validation Report ⓘ

Mar 21, 2016 – 08:19 PM EDT

PDB ID : 4XHP
Title : Bacillus thuringiensis ParM hybrid protein with ADP, containing two ParM mutants
Authors : Jiang, S.M.; Robinson, R.C.
Deposited on : 2015-01-06
Resolution : 3.20 Å(reported)

This is a Full wwPDB X-ray Structure Validation Report for a publicly released PDB entry.
We welcome your comments at validation@mail.wwpdb.org
A user guide is available at
<http://wwpdb.org/validation/2016/XrayValidationReportHelp>
with specific help available everywhere you see the ⓘ symbol.

The following versions of software and data (see [references ⓘ](#)) were used in the production of this report:

MolProbity : 4.02b-467
Mogul : 1.7.1 (RC1), CSD as537be (2016)
Xtriage (Phenix) : 1.9-1692
EDS : rb-20027107
Percentile statistics : 20151230.v01 (using entries in the PDB archive December 30th 2015)
Refmac : 5.8.0122
CCP4 : 6.5.0
Ideal geometry (proteins) : Engh & Huber (2001)
Ideal geometry (DNA, RNA) : Parkinson et al. (1996)
Validation Pipeline (wwPDB-VP) : rb-20027107

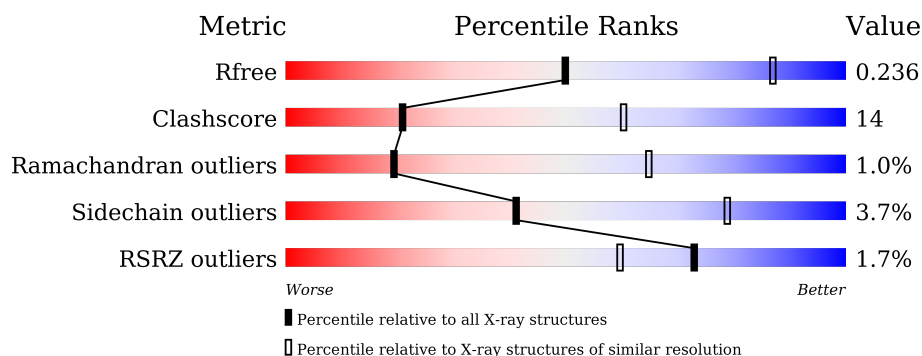
1 Overall quality at a glance

The following experimental techniques were used to determine the structure:

X-RAY DIFFRACTION

The reported resolution of this entry is 3.20 Å.

Percentile scores (ranging between 0-100) for global validation metrics of the entry are shown in the following graphic. The table shows the number of entries on which the scores are based.



Metric	Whole archive (#Entries)	Similar resolution (#Entries, resolution range(Å))
R_{free}	91344	1124 (3.24-3.16)
Clashscore	102246	1024 (3.22-3.18)
Ramachandran outliers	100387	1004 (3.22-3.18)
Sidechain outliers	100360	1003 (3.22-3.18)
RSRZ outliers	91569	1129 (3.24-3.16)

The table below summarises the geometric issues observed across the polymeric chains and their fit to the electron density. The red, orange, yellow and green segments on the lower bar indicate the fraction of residues that contain outliers for ≥ 3 , 2, 1 and 0 types of geometric quality criteria. A grey segment represents the fraction of residues that are not modelled. The numeric value for each fraction is indicated below the corresponding segment, with a dot representing fractions $\leq 5\%$. The upper red bar (where present) indicates the fraction of residues that have poor fit to the electron density. The numeric value is given above the bar.

Mol	Chain	Length	Quality of chain
1	A	866	<div> <div></div> <div>59%</div> <div>21%</div> <div>..</div> <div>17%</div> </div>

The following table lists non-polymeric compounds, carbohydrate monomers and non-standard residues in protein, DNA, RNA chains that are outliers for geometric or electron-density-fit criteria:

Mol	Type	Chain	Res	Chirality	Geometry	Clashes	Electron density
2	MG	A	902	-	-	-	X
3	ADP	A	901	-	-	-	X

2 Entry composition

There are 3 unique types of molecules in this entry. The entry contains 5735 atoms, of which 0 are hydrogens and 0 are deuteriums.

In the tables below, the ZeroOcc column contains the number of atoms modelled with zero occupancy, the AltConf column contains the number of residues with at least one atom in alternate conformation and the Trace column contains the number of residues modelled with at most 2 atoms.

- Molecule 1 is a protein called ParM hybrid fusion protein.

Mol	Chain	Residues	Atoms					ZeroOcc	AltConf	Trace
			Total	C	N	O	S			
1	A	723	5679	3612	924	1120	23	0	0	0

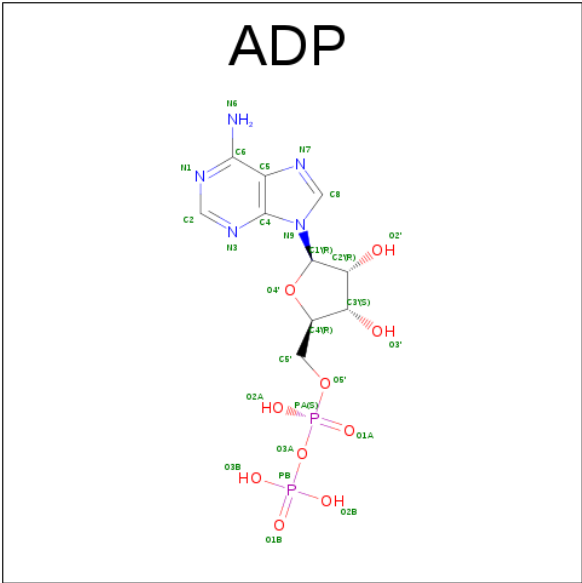
There are 25 discrepancies between the modelled and reference sequences:

Chain	Residue	Modelled	Actual	Comment	Reference
A	288	ASP	PHE	ENGINEERED MUTATION	UNP A0A024E1G1
A	289	ASP	MET	ENGINEERED MUTATION	UNP A0A024E1G1
A	331	ASP	PRO	ENGINEERED MUTATION	UNP A0A024E1G1
A	424	GLY	-	linker	UNP A0A024E1G1
A	425	SER	-	linker	UNP A0A024E1G1
A	426	GLY	-	linker	UNP A0A024E1G1
A	427	SER	-	linker	UNP A0A024E1G1
A	428	GLY	-	linker	UNP A0A024E1G1
A	429	SER	-	linker	UNP A0A024E1G1
A	430	GLY	-	linker	UNP A0A024E1G1
A	431	SER	-	linker	UNP A0A024E1G1
A	432	GLY	-	linker	UNP A0A024E1G1
A	433	SER	-	linker	UNP A0A024E1G1
A	434	GLY	-	linker	UNP A0A024E1G1
A	435	SER	-	linker	UNP A0A024E1G1
A	436	GLY	-	linker	UNP A0A024E1G1
A	437	SER	-	linker	UNP A0A024E1G1
A	438	GLY	-	linker	UNP A0A024E1G1
A	439	SER	-	linker	UNP A0A024E1G1
A	440	GLY	-	linker	UNP A0A024E1G1
A	441	SER	-	linker	UNP A0A024E1G1
A	442	GLY	-	linker	UNP A0A024E1G1
A	443	SER	-	linker	UNP A0A024E1G1
A	799	ASP	MET	ENGINEERED MUTATION	UNP A0A024E1G1
A	803	ASP	PHE	ENGINEERED MUTATION	UNP A0A024E1G1

- Molecule 2 is MAGNESIUM ION (three-letter code: MG) (formula: Mg).

Mol	Chain	Residues	Atoms		ZeroOcc	AltConf
2	A	2	Total	Mg	0	0
			2	2		

- Molecule 3 is ADENOSINE-5'-DIPHOSPHATE (three-letter code: ADP) (formula: $C_{10}H_{15}N_5O_{10}P_2$).



These plots are drawn for all protein, RNA and DNA chains in the entry. The first graphic for a chain summarises the proportions of errors displayed in the second graphic. The second graphic shows the sequence view annotated by issues in geometry and electron density. Residues are color-coded according to the number of geometric quality criteria for which they contain at least one outlier: green = 0, yellow = 1, orange = 2 and red = 3 or more. A red dot above a residue indicates a poor fit to the electron density ($RSRZ > 2$). Stretches of 2 or more consecutive residues without any outlier are shown as a green connector. Residues present in the sample, but not in the model, are shown in grey.

- [illegible]

4 Data and refinement statistics

Property	Value	Source
Space group	P 1 21 1	Depositor
Cell constants a, b, c, α , β , γ	55.31Å 97.28Å 87.90Å 90.00° 98.82° 90.00°	Depositor
Resolution (Å)	27.75 – 3.20 27.75 – 3.19	Depositor EDS
% Data completeness (in resolution range)	82.3 (27.75-3.20) 85.0 (27.75-3.19)	Depositor EDS
R_{merge}	0.06	Depositor
R_{sym}	(Not available)	Depositor
$\langle I/\sigma(I) \rangle$ ¹	6.58 (at 3.17Å)	Xtriage
Refinement program	PHENIX (phenix.refine: 1.8.4_1496)	Depositor
R, R_{free}	0.229 , 0.287 0.238 , 0.236	Depositor DCC
R_{free} test set	1320 reflections (10.06%)	DCC
Wilson B-factor (Å ²)	66.9	Xtriage
Anisotropy	0.281	Xtriage
Bulk solvent k_{sol} (e/Å ³), B_{sol} (Å ²)	0.28 , 14.2	EDS
Estimated twinning fraction	No twinning to report.	Xtriage
L-test for twinning ²	$\langle L \rangle = 0.48$, $\langle L^2 \rangle = 0.31$	Xtriage
Outliers	0 of 13179 reflections	Xtriage
F_o, F_c correlation	0.88	EDS
Total number of atoms	5735	wwPDB-VP
Average B, all atoms (Å ²)	63.0	wwPDB-VP

Xtriage's analysis on translational NCS is as follows: *The largest off-origin peak in the Patterson function is 6.76% of the height of the origin peak. No significant pseudotranslation is detected.*

¹Intensities estimated from amplitudes.

²Theoretical values of $\langle |L| \rangle$, $\langle L^2 \rangle$ for acentric reflections are 0.5, 0.375 respectively for untwinned datasets, and 0.333, 0.2 for perfectly twinned datasets.

5 Model quality

5.1 Standard geometry

Bond lengths and bond angles in the following residue types are not validated in this section: MG, ADP

The Z score for a bond length (or angle) is the number of standard deviations the observed value is removed from the expected value. A bond length (or angle) with $|Z| > 5$ is considered an outlier worth inspection. RMSZ is the root-mean-square of all Z scores of the bond lengths (or angles).

Mol	Chain	Bond lengths		Bond angles	
		RMSZ	# Z >5	RMSZ	# Z >5
1	A	0.34	0/5763	0.65	12/7750 (0.2%)

Chiral center outliers are detected by calculating the chiral volume of a chiral center and verifying if the center is modelled as a planar moiety or with the opposite hand. A planarity outlier is detected by checking planarity of atoms in a peptide group, atoms in a mainchain group or atoms of a sidechain that are expected to be planar.

Mol	Chain	#Chirality outliers	#Planarity outliers
1	A	0	6

There are no bond length outliers.

All (12) bond angle outliers are listed below:

Mol	Chain	Res	Type	Atoms	Z	Observed(°)	Ideal(°)
1	A	217	GLU	N-CA-CB	-15.04	83.53	110.60
1	A	86	ALA	CB-CA-C	-11.23	93.25	110.10
1	A	216	GLY	N-CA-C	-7.96	93.21	113.10
1	A	228	ILE	CB-CA-C	7.15	125.90	111.60
1	A	86	ALA	N-CA-CB	-6.77	100.63	110.10
1	A	229	GLY	N-CA-C	-6.53	96.78	113.10
1	A	449	LEU	CA-CB-CG	5.71	128.44	115.30
1	A	611	LEU	CA-CB-CG	5.70	128.40	115.30
1	A	42	ILE	CB-CA-C	-5.57	100.46	111.60
1	A	85	ASP	CB-CA-C	-5.52	99.36	110.40
1	A	615	TYR	CA-CB-CG	5.35	123.56	113.40
1	A	331	ASP	CB-CA-C	5.03	120.45	110.40

There are no chirality outliers.

All (6) planarity outliers are listed below:

Mol	Chain	Res	Type	Group
1	A	251	GLU	Peptide
1	A	394	LYS	Peptide
1	A	514	GLU	Peptide
1	A	587	GLU	Peptide
1	A	609	GLN	Peptide
1	A	612	GLU	Peptide

5.2 Too-close contacts ⓘ

In the following table, the Non-H and H(model) columns list the number of non-hydrogen atoms and hydrogen atoms in the chain respectively. The H(added) column lists the number of hydrogen atoms added and optimized by MolProbity. The Clashes column lists the number of clashes within the asymmetric unit, whereas Symm-Clashes lists symmetry related clashes.

Mol	Chain	Non-H	H(model)	H(added)	Clashes	Symm-Clashes
1	A	5679	0	5636	164	0
2	A	2	0	0	0	0
3	A	54	0	24	3	0
All	All	5735	0	5660	164	0

The all-atom clashscore is defined as the number of clashes found per 1000 atoms (including hydrogen atoms). The all-atom clashscore for this structure is 14.

All (164) close contacts within the same asymmetric unit are listed below, sorted by their clash magnitude.

Atom-1	Atom-2	Interatomic distance (Å)	Clash overlap (Å)
1:A:84:GLY:HA2	1:A:87:ARG:CD	1.69	1.20
1:A:84:GLY:HA2	1:A:87:ARG:HD3	1.23	1.17
1:A:249:ASP:OD1	1:A:250:GLY:N	1.94	0.98
1:A:484:VAL:HG23	1:A:540:ALA:HB3	1.51	0.92
1:A:84:GLY:CA	1:A:87:ARG:HD3	2.05	0.86
1:A:618:HIS:O	1:A:634:ILE:N	2.07	0.85
1:A:578:ALA:HB2	1:A:620:VAL:HG11	1.62	0.82
1:A:84:GLY:HA2	1:A:87:ARG:CG	1.95	0.81
1:A:218:ILE:HG22	1:A:219:VAL:O	1.84	0.77
1:A:366:LYS:NZ	1:A:388:ASP:OD1	2.22	0.72
1:A:43:ALA:HB3	1:A:92:TYR:HB2	1.74	0.70
1:A:214:VAL:O	1:A:215:ASN:HB2	1.92	0.69
1:A:227:GLU:OE2	1:A:227:GLU:O	2.10	0.69
1:A:587:GLU:O	1:A:588:GLU:HG2	1.93	0.67
1:A:578:ALA:HA	1:A:632:ILE:HG21	1.76	0.67

Continued on next page...

Continued from previous page...

Atom-1	Atom-2	Interatomic distance (Å)	Clash overlap (Å)
1:A:84:GLY:C	1:A:87:ARG:H	1.97	0.66
1:A:619:THR:HA	1:A:633:LYS:HA	1.79	0.65
1:A:135:ALA:HA	1:A:189:ILE:HG21	1.78	0.65
1:A:699:LEU:HD23	1:A:805:THR:HG22	1.79	0.64
1:A:588:GLU:CG	1:A:633:LYS:H	2.11	0.64
1:A:367:ASN:N	1:A:389:GLY:O	2.30	0.63
1:A:487:GLU:HG3	1:A:532:ARG:HH11	1.62	0.63
1:A:588:GLU:HG3	1:A:633:LYS:HB3	1.80	0.63
1:A:27:LEU:HD11	1:A:412:LEU:HD12	1.80	0.62
1:A:612:GLU:HB2	1:A:615:TYR:CD2	2.34	0.62
1:A:6:LEU:O	1:A:8:LYS:HB3	1.99	0.62
1:A:388:ASP:OD1	1:A:389:GLY:N	2.33	0.61
1:A:612:GLU:HB2	1:A:615:TYR:HD2	1.65	0.61
1:A:6:LEU:C	1:A:8:LYS:HB3	2.21	0.61
1:A:28:ASN:OD1	1:A:30:LYS:HG2	1.99	0.61
1:A:8:LYS:O	1:A:8:LYS:HD2	2.00	0.61
1:A:20:ILE:HD12	1:A:21:LYS:HG3	1.83	0.59
1:A:538:ALA:O	1:A:541:LYS:HB2	2.03	0.59
1:A:11:LEU:HB3	1:A:148:VAL:HG22	1.83	0.59
1:A:565:ASN:O	1:A:567:LYS:N	2.35	0.59
1:A:452:ASN:HA	1:A:586:LYS:HD3	1.85	0.58
1:A:454:LEU:HB3	1:A:591:VAL:HG22	1.86	0.58
1:A:610:ILE:O	1:A:613:MET:HG3	2.03	0.57
1:A:120:GLN:HA	1:A:123:LYS:HD2	1.85	0.56
1:A:566:LYS:HE3	1:A:613:MET:CE	2.35	0.56
1:A:8:LYS:O	1:A:9:ASN:HB2	2.05	0.56
1:A:32:ASN:ND2	1:A:214:VAL:HG13	2.20	0.56
1:A:475:ASN:HD21	1:A:657:VAL:HG23	1.71	0.56
1:A:248:GLU:OE1	1:A:253:ASN:ND2	2.40	0.55
1:A:353:ALA:O	1:A:357:LYS:HG3	2.06	0.55
1:A:123:LYS:HE2	1:A:170:MET:SD	2.46	0.55
1:A:153:GLY:HA2	1:A:198:MET:O	2.06	0.55
1:A:802:TRP:NE1	1:A:807:ALA:O	2.31	0.55
1:A:395:ASN:ND2	1:A:398:GLU:OE1	2.36	0.54
1:A:85:ASP:C	1:A:85:ASP:OD1	2.45	0.54
1:A:27:LEU:HD21	1:A:213:ILE:HG21	1.89	0.54
1:A:179:PHE:HE1	1:A:189:ILE:HD13	1.73	0.53
1:A:566:LYS:HE3	1:A:613:MET:HE1	1.90	0.53
1:A:121:LYS:HD2	1:A:122:ASN:HB3	1.89	0.53
1:A:564:LYS:HA	1:A:565:ASN:C	2.29	0.53
1:A:122:ASN:O	1:A:124:LYS:N	2.35	0.53

Continued on next page...

Continued from previous page...

Atom-1	Atom-2	Interatomic distance (Å)	Clash overlap (Å)
1:A:484:VAL:CG2	1:A:540:ALA:HB3	2.33	0.53
1:A:609:GLN:HB2	1:A:611:LEU:H	1.73	0.52
1:A:727:ILE:HD11	1:A:775:VAL:HG21	1.91	0.52
1:A:649:VAL:HG23	1:A:677:ILE:HD11	1.90	0.52
1:A:675:TYR:HA	1:A:807:ALA:HB1	1.91	0.52
1:A:838:ASN:N	1:A:838:ASN:OD1	2.43	0.52
1:A:314:LYS:HD2	1:A:321:TYR:CZ	2.46	0.51
1:A:464:LYS:HB3	1:A:480:ALA:HB1	1.92	0.51
1:A:795:LYS:HD2	1:A:827:LEU:HD13	1.91	0.51
1:A:30:LYS:HE2	1:A:32:ASN:CG	2.31	0.50
1:A:484:VAL:HG22	1:A:537:GLY:O	2.11	0.50
1:A:250:GLY:C	1:A:251:GLU:HG3	2.32	0.50
1:A:42:ILE:O	1:A:42:ILE:HG13	2.12	0.50
1:A:315:MET:HG3	1:A:321:TYR:HD2	1.77	0.50
1:A:588:GLU:HG3	1:A:633:LYS:H	1.75	0.50
1:A:174:GLU:HB2	1:A:190:LYS:HE3	1.94	0.50
1:A:522:SER:OG	1:A:618:HIS:HB3	2.12	0.50
1:A:608:GLU:O	1:A:609:GLN:HG2	2.11	0.50
1:A:85:ASP:C	1:A:87:ARG:H	2.14	0.49
1:A:612:GLU:OE1	1:A:615:TYR:N	2.45	0.49
1:A:677:ILE:HD12	1:A:690:PHE:HE2	1.78	0.49
1:A:34:GLU:OE2	1:A:140:ARG:NH1	2.46	0.49
1:A:611:LEU:O	1:A:614:LEU:HB2	2.13	0.48
1:A:32:ASN:HD21	1:A:214:VAL:HG13	1.78	0.48
1:A:609:GLN:HG3	1:A:610:ILE:HA	1.94	0.48
1:A:524:SER:HB3	1:A:613:MET:O	2.14	0.48
1:A:204:SER:O	1:A:406:SER:HB3	2.13	0.48
1:A:86:ALA:HB2	1:A:124:LYS:HD3	1.96	0.48
1:A:514:GLU:C	1:A:539:TYR:HE2	2.16	0.48
1:A:657:VAL:O	1:A:659:GLY:N	2.46	0.48
1:A:714:ILE:HD11	1:A:786:GLY:HA3	1.96	0.48
1:A:212:ASP:OD1	1:A:213:ILE:N	2.47	0.47
1:A:802:TRP:HB2	1:A:810:ASN:HD21	1.80	0.47
1:A:515:LEU:HA	1:A:539:TYR:CE2	2.49	0.47
1:A:803:ASP:O	1:A:806:ASN:ND2	2.47	0.47
1:A:372:GLY:HA3	3:A:901:ADP:H5'1	1.98	0.46
1:A:73:LEU:HB2	1:A:93:VAL:O	2.14	0.46
1:A:588:GLU:HG3	1:A:633:LYS:O	2.14	0.46
1:A:690:PHE:HD1	1:A:695:LEU:HA	1.80	0.46
1:A:513:ILE:HA	1:A:516:LEU:HD21	1.97	0.46
1:A:690:PHE:HE1	1:A:695:LEU:HD13	1.79	0.46

Continued on next page...

Continued from previous page...

Atom-1	Atom-2	Interatomic distance (Å)	Clash overlap (Å)
1:A:331:ASP:OD1	1:A:331:ASP:N	2.47	0.46
1:A:647:SER:HA	1:A:650:LEU:HG	1.97	0.46
1:A:828:LYS:HD2	1:A:835:LEU:HD13	1.97	0.46
1:A:475:ASN:ND2	1:A:657:VAL:HA	2.31	0.45
1:A:151:SER:OG	1:A:199:ASN:ND2	2.49	0.45
1:A:375:LEU:HD13	3:A:901:ADP:N6	2.32	0.45
1:A:515:LEU:HA	1:A:539:TYR:HE2	1.81	0.45
1:A:614:LEU:O	1:A:618:HIS:NE2	2.38	0.45
1:A:811:ILE:HG22	1:A:813:VAL:HG13	1.99	0.45
1:A:121:LYS:HA	1:A:122:ASN:HA	1.50	0.45
1:A:609:GLN:O	1:A:610:ILE:HG23	2.17	0.45
1:A:588:GLU:HG3	1:A:633:LYS:CA	2.47	0.45
1:A:98:LYS:HG2	1:A:299:THR:HG21	1.97	0.45
1:A:641:MET:HB2	1:A:643:VAL:HG12	1.98	0.44
1:A:4:GLN:HG2	1:A:5:MET:HG3	1.99	0.44
1:A:124:LYS:HB3	1:A:124:LYS:HE2	1.57	0.44
1:A:619:THR:OG1	1:A:633:LYS:HD3	2.16	0.44
1:A:252:LEU:HD21	1:A:254:LYS:CG	2.47	0.44
1:A:748:GLN:HA	1:A:752:MET:SD	2.58	0.44
1:A:392:LEU:O	1:A:394:LYS:HD2	2.17	0.44
1:A:813:VAL:HG11	1:A:845:PHE:CD2	2.53	0.44
1:A:91:TRP:CH2	1:A:124:LYS:HD2	2.52	0.44
1:A:518:VAL:HB	1:A:620:VAL:HG23	1.98	0.44
1:A:218:ILE:HG22	1:A:219:VAL:N	2.32	0.44
1:A:612:GLU:OE1	1:A:612:GLU:HA	2.18	0.43
1:A:19:ASN:O	1:A:106:PRO:HG2	2.18	0.43
1:A:512:ASP:OD1	1:A:512:ASP:N	2.40	0.43
1:A:7:SER:CA	1:A:8:LYS:HB3	2.48	0.43
1:A:79:SER:HB3	1:A:82:LEU:HG	2.00	0.43
1:A:328:LYS:HA	1:A:332:VAL:O	2.19	0.43
1:A:655:ASP:OD1	1:A:656:ILE:N	2.51	0.43
1:A:199:ASN:HA	1:A:201:GLU:OE1	2.19	0.43
1:A:12:LEU:HD21	1:A:415:GLN:HG3	2.01	0.42
1:A:169:GLU:HA	1:A:172:TYR:CD2	2.54	0.42
1:A:489:PRO:HA	1:A:490:PRO:HD3	1.86	0.42
1:A:676:ALA:HB1	1:A:801:PHE:HE2	1.84	0.42
1:A:719:LYS:HB3	1:A:719:LYS:HE2	1.79	0.42
1:A:788:LEU:O	1:A:792:GLU:HG2	2.19	0.42
1:A:718:ILE:HG23	1:A:779:VAL:HG11	2.02	0.42
1:A:664:VAL:HG23	1:A:665:GLU:H	1.84	0.42
1:A:565:ASN:HB3	1:A:566:LYS:H	1.60	0.42

Continued on next page...

Continued from previous page...

Atom-1	Atom-2	Interatomic distance (Å)	Clash overlap (Å)
1:A:309:MET:HG3	3:A:901:ADP:C6	2.54	0.42
1:A:749:ARG:HG3	1:A:749:ARG:NH1	2.35	0.42
1:A:837:LYS:HA	1:A:838:ASN:C	2.40	0.42
1:A:82:LEU:HD23	1:A:82:LEU:HA	1.85	0.42
1:A:588:GLU:HG3	1:A:633:LYS:N	2.34	0.42
1:A:73:LEU:HD13	1:A:132:THR:HG21	2.02	0.42
1:A:808:ASP:OD2	1:A:808:ASP:N	2.53	0.42
1:A:98:LYS:O	1:A:103:ARG:HD3	2.20	0.41
1:A:588:GLU:HG3	1:A:633:LYS:CB	2.48	0.41
1:A:6:LEU:HD23	1:A:12:LEU:HD11	2.02	0.41
1:A:153:GLY:O	1:A:155:PRO:HD3	2.20	0.41
1:A:4:GLN:HG3	1:A:5:MET:N	2.34	0.41
1:A:252:LEU:HD21	1:A:254:LYS:HG2	2.01	0.41
1:A:4:GLN:CG	1:A:5:MET:N	2.82	0.41
1:A:575:THR:O	1:A:578:ALA:HB3	2.20	0.41
1:A:145:GLU:HG3	1:A:190:LYS:HB3	2.02	0.41
1:A:318:ASP:OD1	1:A:321:TYR:N	2.53	0.41
1:A:138:ALA:HB2	1:A:146:VAL:HG21	2.02	0.41
1:A:492:LYS:HE2	1:A:628:GLU:OE2	2.20	0.41
1:A:231:SER:HA	1:A:247:PHE:O	2.22	0.40
1:A:7:SER:N	1:A:8:LYS:HB3	2.35	0.40
1:A:673:GLU:HG2	1:A:808:ASP:OD2	2.20	0.40
1:A:475:ASN:OD1	1:A:658:ASN:N	2.52	0.40
1:A:85:ASP:C	1:A:87:ARG:N	2.74	0.40
1:A:303:PHE:CE1	1:A:307:LEU:HD23	2.56	0.40
1:A:539:TYR:O	1:A:543:GLN:HG3	2.22	0.40

There are no symmetry-related clashes.

5.3 Torsion angles [i](#)

5.3.1 Protein backbone [i](#)

In the following table, the Percentiles column shows the percent Ramachandran outliers of the chain as a percentile score with respect to all X-ray entries followed by that with respect to entries of similar resolution.

The Analysed column shows the number of residues for which the backbone conformation was analysed, and the total number of residues.

Mol	Chain	Analysed	Favoured	Allowed	Outliers	Percentiles	
1	A	697/866 (80%)	622 (89%)	68 (10%)	7 (1%)	19	65

All (7) Ramachandran outliers are listed below:

Mol	Chain	Res	Type
1	A	447	GLN
1	A	449	LEU
1	A	609	GLN
1	A	615	TYR
1	A	452	ASN
1	A	566	LYS
1	A	588	GLU

5.3.2 Protein sidechains ⓘ

In the following table, the Percentiles column shows the percent sidechain outliers of the chain as a percentile score with respect to all X-ray entries followed by that with respect to entries of similar resolution.

The Analysed column shows the number of residues for which the sidechain conformation was analysed, and the total number of residues.

Mol	Chain	Analysed	Rotameric	Outliers	Percentiles	
1	A	617/740 (83%)	594 (96%)	23 (4%)	41	79

All (23) residues with a non-rotameric sidechain are listed below:

Mol	Chain	Res	Type
1	A	6	LEU
1	A	7	SER
1	A	29	GLU
1	A	81	SER
1	A	82	LEU
1	A	101	GLU
1	A	145	GLU
1	A	227	GLU
1	A	230	GLU
1	A	248	GLU
1	A	252	LEU
1	A	449	LEU
1	A	452	ASN
1	A	462	ASN

Continued on next page...

Continued from previous page...

Mol	Chain	Res	Type
1	A	514	GLU
1	A	523	ASN
1	A	551	VAL
1	A	587	GLU
1	A	619	THR
1	A	643	VAL
1	A	749	ARG
1	A	803	ASP
1	A	808	ASP

Some sidechains can be flipped to improve hydrogen bonding and reduce clashes. All (1) such sidechains are listed below:

Mol	Chain	Res	Type
1	A	806	ASN

5.3.3 RNA [i](#)

There are no RNA molecules in this entry.

5.4 Non-standard residues in protein, DNA, RNA chains [i](#)

There are no non-standard protein/DNA/RNA residues in this entry.

5.5 Carbohydrates [i](#)

There are no carbohydrates in this entry.

5.6 Ligand geometry [i](#)

Of 4 ligands modelled in this entry, 2 are monoatomic - leaving 2 for Mogul analysis.

In the following table, the Counts columns list the number of bonds (or angles) for which Mogul statistics could be retrieved, the number of bonds (or angles) that are observed in the model and the number of bonds (or angles) that are defined in the chemical component dictionary. The Link column lists molecule types, if any, to which the group is linked. The Z score for a bond length (or angle) is the number of standard deviations the observed value is removed from the expected value. A bond length (or angle) with $|Z| > 2$ is considered an outlier worth inspection. RMSZ is the root-mean-square of all Z scores of the bond lengths (or angles).

Mol	Type	Chain	Res	Link	Bond lengths			Bond angles		
					Counts	RMSZ	# Z > 2	Counts	RMSZ	# Z > 2
3	ADP	A	901	2	24,29,29	0.98	1 (4%)	23,45,45	1.78	2 (8%)
3	ADP	A	903	2	24,29,29	0.97	1 (4%)	23,45,45	1.74	1 (4%)

In the following table, the Chirals column lists the number of chiral outliers, the number of chiral centers analysed, the number of these observed in the model and the number defined in the chemical component dictionary. Similar counts are reported in the Torsion and Rings columns. '-' means no outliers of that kind were identified.

Mol	Type	Chain	Res	Link	Chirals	Torsions	Rings
3	ADP	A	901	2	-	0/12/32/32	0/3/3/3
3	ADP	A	903	2	-	0/12/32/32	0/3/3/3

All (2) bond length outliers are listed below:

Mol	Chain	Res	Type	Atoms	Z	Observed(Å)	Ideal(Å)
3	A	901	ADP	C5-C4	3.09	1.47	1.40
3	A	903	ADP	C5-C4	3.10	1.47	1.40

All (3) bond angle outliers are listed below:

Mol	Chain	Res	Type	Atoms	Z	Observed(°)	Ideal(°)
3	A	901	ADP	N3-C2-N1	-6.77	123.55	128.87
3	A	903	ADP	N3-C2-N1	-6.72	123.59	128.87
3	A	901	ADP	C1'-N9-C4	-2.18	124.38	126.81

There are no chirality outliers.

There are no torsion outliers.

There are no ring outliers.

1 monomer is involved in 3 short contacts:

Mol	Chain	Res	Type	Clashes	Symm-Clashes
3	A	901	ADP	3	0

5.7 Other polymers ⓘ

There are no such residues in this entry.

5.8 Polymer linkage issues

There are no chain breaks in this entry.

6 Fit of model and data [i](#)

6.1 Protein, DNA and RNA chains [i](#)

In the following table, the column labelled ‘#RSRZ> 2’ contains the number (and percentage) of RSRZ outliers, followed by percent RSRZ outliers for the chain as percentile scores relative to all X-ray entries and entries of similar resolution. The OWAB column contains the minimum, median, 95th percentile and maximum values of the occupancy-weighted average B-factor per residue. The column labelled ‘Q< 0.9’ lists the number of (and percentage) of residues with an average occupancy less than 0.9.

Mol	Chain	Analysed	<RSRZ>	#RSRZ>2	OWAB(Å ²)	Q<0.9
1	A	723/866 (83%)	0.02	12 (1%) 73 60	36, 57, 105, 191	0

All (12) RSRZ outliers are listed below:

Mol	Chain	Res	Type	RSRZ
1	A	120	GLN	6.0
1	A	608	GLU	5.0
1	A	155	PRO	4.6
1	A	699	LEU	3.4
1	A	805	THR	3.3
1	A	526	ASP	3.1
1	A	597	MET	2.8
1	A	102	ASP	2.5
1	A	665	GLU	2.4
1	A	550	THR	2.4
1	A	29	GLU	2.4
1	A	32	ASN	2.2

6.2 Non-standard residues in protein, DNA, RNA chains [i](#)

There are no non-standard protein/DNA/RNA residues in this entry.

6.3 Carbohydrates [i](#)

There are no carbohydrates in this entry.

6.4 Ligands [i](#)

In the following table, the Atoms column lists the number of modelled atoms in the group and the number defined in the chemical component dictionary. LLDF column lists the quality of electron

density of the group with respect to its neighbouring residues in protein, DNA or RNA chains. The B-factors column lists the minimum, median, 95th percentile and maximum values of B factors of atoms in the group. The column labelled 'Q< 0.9' lists the number of atoms with occupancy less than 0.9.

Mol	Type	Chain	Res	Atoms	RSCC	RSR	LLDF	B-factors(Å ²)	Q<0.9
2	MG	A	902	1/1	0.83	0.38	3.53	56,56,56,56	0
3	ADP	A	901	27/27	0.79	0.35	2.79	55,75,103,105	0
3	ADP	A	903	27/27	0.91	0.20	-0.29	40,55,73,95	0
2	MG	A	900	1/1	0.73	0.32	-	53,53,53,53	0

6.5 Other polymers

There are no such residues in this entry.