



Full wwPDB X-ray Structure Validation Report ⓘ

Apr 11, 2016 – 03:22 PM EDT

PDB ID : 4XO6
Title : Crystal structure of human 3-alpha hydroxysteroid dehydrogenase type 3 in complex with NADP+, 5alpha-androstan-3,17-dione and (3beta, 5alpha)-3-hydroxyandrostane-17-one
Authors : Zhang, B.; Hu, X.-J.; Lin, S.-X.
Deposited on : 2015-01-16
Resolution : 1.20 Å(reported)

This is a Full wwPDB X-ray Structure Validation Report for a publicly released PDB entry.
We welcome your comments at validation@mail.wwpdb.org
A user guide is available at
<http://wwpdb.org/validation/2016/XrayValidationReportHelp>
with specific help available everywhere you see the ⓘ symbol.

The following versions of software and data (see [references ⓘ](#)) were used in the production of this report:

MolProbity : 4.02b-467
Mogul : 1.7.1 (RC1), CSD as537be (2016)
Xtriage (Phenix) : 1.9-1692
EDS : rb-20027107
Percentile statistics : 20151230.v01 (using entries in the PDB archive December 30th 2015)
Refmac : 5.8.0135
CCP4 : 6.5.0
Ideal geometry (proteins) : Engh & Huber (2001)
Ideal geometry (DNA, RNA) : Parkinson et al. (1996)
Validation Pipeline (wwPDB-VP) : rb-20027107

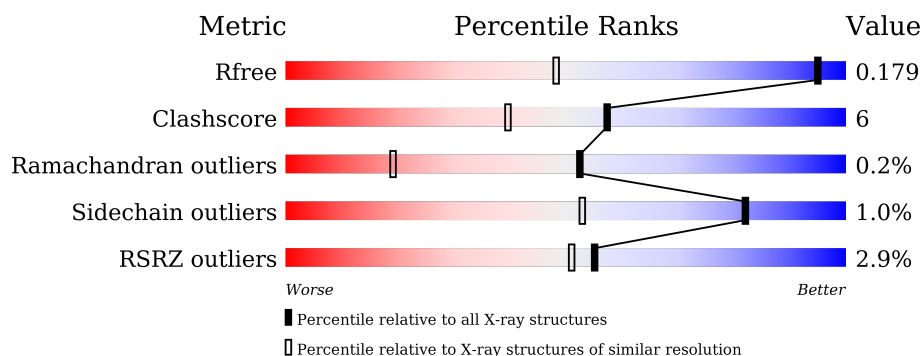
1 Overall quality at a glance ⓘ

The following experimental techniques were used to determine the structure:

X-RAY DIFFRACTION

The reported resolution of this entry is 1.20 Å.

Percentile scores (ranging between 0-100) for global validation metrics of the entry are shown in the following graphic. The table shows the number of entries on which the scores are based.



Metric	Whole archive (#Entries)	Similar resolution (#Entries, resolution range(Å))
R_{free}	91344	1495 (1.26-1.14)
Clashscore	102246	1607 (1.26-1.14)
Ramachandran outliers	100387	1540 (1.26-1.14)
Sidechain outliers	100360	1538 (1.26-1.14)
RSRZ outliers	91569	1500 (1.26-1.14)

The table below summarises the geometric issues observed across the polymeric chains and their fit to the electron density. The red, orange, yellow and green segments on the lower bar indicate the fraction of residues that contain outliers for ≥ 3 , 2, 1 and 0 types of geometric quality criteria. A grey segment represents the fraction of residues that are not modelled. The numeric value for each fraction is indicated below the corresponding segment, with a dot representing fractions $\leq 5\%$. The upper red bar (where present) indicates the fraction of residues that have poor fit to the electron density. The numeric value is given above the bar.

Mol	Chain	Length	Quality of chain
1	A	325	<div> <div>3%</div> <div>88%</div> <div>11%</div> </div>
1	B	325	<div> <div>3%</div> <div>89%</div> <div>10%</div> </div>

The following table lists non-polymeric compounds, carbohydrate monomers and non-standard residues in protein, DNA, RNA chains that are outliers for geometric or electron-density-fit criteria:

Mol	Type	Chain	Res	Chirality	Geometry	Clashes	Electron density
3	5SD	A	402	-	-	-	X
4	SO4	A	403	-	-	-	X
4	SO4	B	403	-	-	-	X
5	EDO	A	404	-	-	-	X
6	GOL	A	405	-	-	-	X
7	AOX	B	402	-	-	-	X

2 Entry composition [i](#)

There are 8 unique types of molecules in this entry. The entry contains 6287 atoms, of which 0 are hydrogens and 0 are deuteriums.

In the tables below, the ZeroOcc column contains the number of atoms modelled with zero occupancy, the AltConf column contains the number of residues with at least one atom in alternate conformation and the Trace column contains the number of residues modelled with at most 2 atoms.

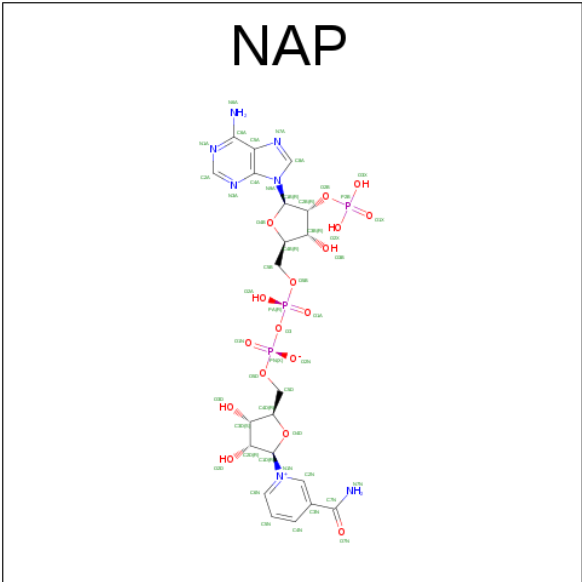
- Molecule 1 is a protein called Aldo-keto reductase family 1 member C2.

Mol	Chain	Residues	Atoms					ZeroOcc	AltConf	Trace
1	A	325	Total	C	N	O	S	0	10	0
			2657	1708	452	485	12			
1	B	325	Total	C	N	O	S	0	7	0
			2636	1693	451	480	12			

There are 6 discrepancies between the modelled and reference sequences:

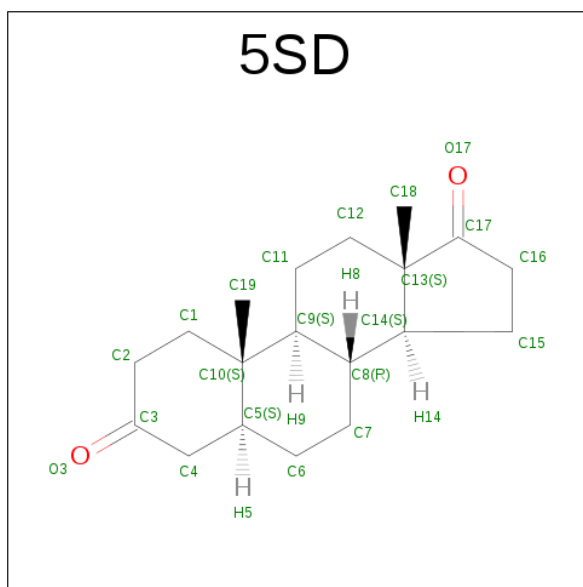
Chain	Residue	Modelled	Actual	Comment	Reference
A	-1	SER	-	expression tag	UNP P52895
A	0	VAL	-	expression tag	UNP P52895
A	1	ASP	-	expression tag	UNP P52895
B	-1	SER	-	expression tag	UNP P52895
B	0	VAL	-	expression tag	UNP P52895
B	1	ASP	-	expression tag	UNP P52895

- Molecule 2 is NADP NICOTINAMIDE-ADENINE-DINUCLEOTIDE PHOSPHATE (three-letter code: NAP) (formula: C₂₁H₂₈N₇O₁₇P₃).



Mol	Chain	Residues	Atoms					ZeroOcc	AltConf
2	A	1	Total	C	N	O	P	0	0
			48	21	7	17	3		
2	B	1	Total	C	N	O	P	0	0
			48	21	7	17	3		

- Molecule 3 is 5ALPHA-ANDROSTAN-3,17-DIONE (three-letter code: 5SD) (formula: $C_{19}H_{28}O_2$).



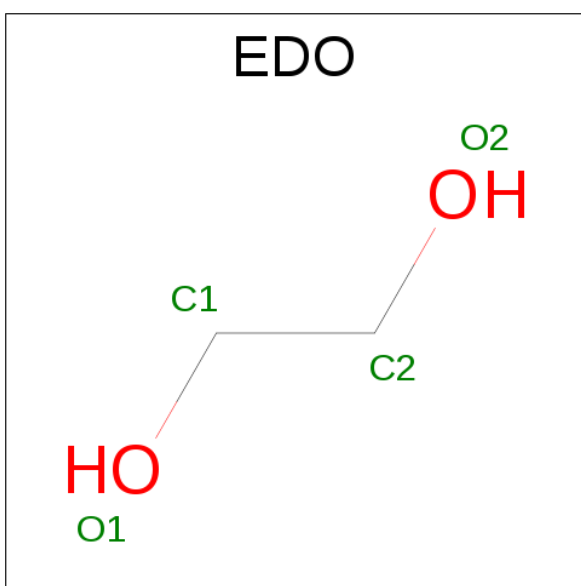
Mol	Chain	Residues	Atoms			ZeroOcc	AltConf
3	A	1	Total	C	O	0	0
			21	19	2		

- Molecule 4 is SULFATE ION (three-letter code: SO4) (formula: O_4S).



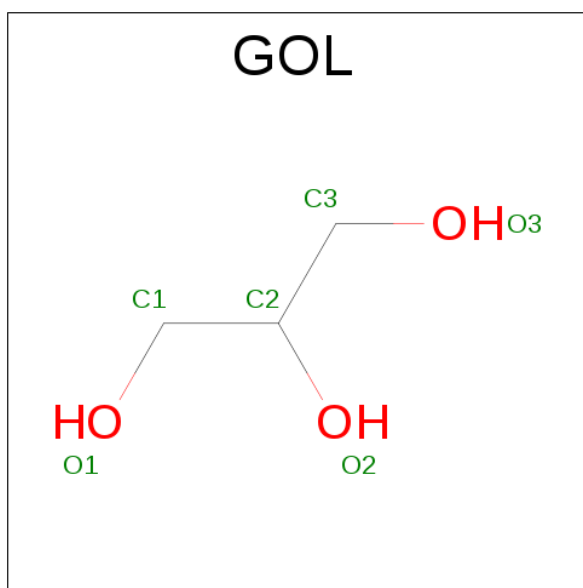
Mol	Chain	Residues	Atoms			ZeroOcc	AltConf
4	A	1	Total	O	S	0	0
			5	4	1		
4	B	1	Total	O	S	0	0
			5	4	1		

- Molecule 5 is 1,2-ETHANEDIOL (three-letter code: EDO) (formula: C₂H₆O₂).



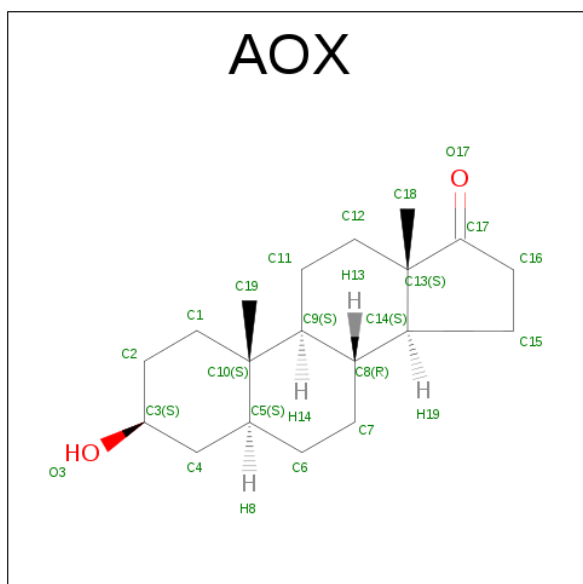
Mol	Chain	Residues	Atoms			ZeroOcc	AltConf
5	A	1	Total	C	O	0	0
			4	2	2		
5	B	1	Total	C	O	0	0
			4	2	2		

- Molecule 6 is GLYCEROL (three-letter code: GOL) (formula: $C_3H_8O_3$).



Mol	Chain	Residues	Atoms			ZeroOcc	AltConf
6	A	1	Total	C	O	0	0
			6	3	3		

- Molecule 7 is (3Beta,5alpha)-3-Hydroxyandrostane-17-one (three-letter code: AOX) (formula: $C_{19}H_{30}O_2$).



Mol	Chain	Residues	Atoms			ZeroOcc	AltConf
7	B	1	Total	C	O	0	0
			21	19	2		

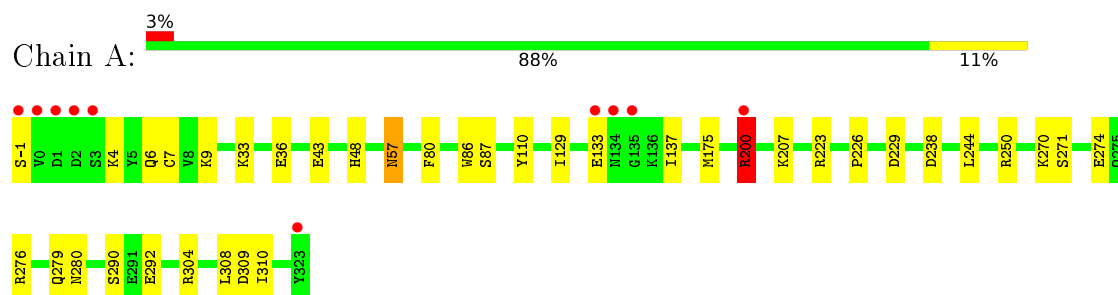
- Molecule 8 is water.

Mol	Chain	Residues	Atoms		ZeroOcc	AltConf
8	A	432	Total 432	O 432	0	0
8	B	400	Total 400	O 400	0	0

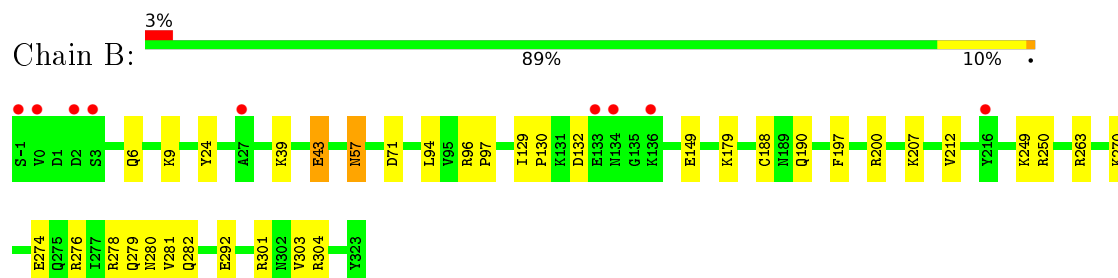
3 Residue-property plots

These plots are drawn for all protein, RNA and DNA chains in the entry. The first graphic for a chain summarises the proportions of errors displayed in the second graphic. The second graphic shows the sequence view annotated by issues in geometry and electron density. Residues are color-coded according to the number of geometric quality criteria for which they contain at least one outlier: green = 0, yellow = 1, orange = 2 and red = 3 or more. A red dot above a residue indicates a poor fit to the electron density ($RSRZ > 2$). Stretches of 2 or more consecutive residues without any outlier are shown as a green connector. Residues present in the sample, but not in the model, are shown in grey.

- Molecule 1: Aldo-keto reductase family 1 member C2



- Molecule 1: Aldo-keto reductase family 1 member C2



4 Data and refinement statistics

Property	Value	Source
Space group	P 1 21 1	Depositor
Cell constants a, b, c, α , β , γ	54.64Å 86.95Å 76.72Å 90.00° 107.10° 90.00°	Depositor
Resolution (Å)	17.64 – 1.20 17.64 – 1.20	Depositor EDS
% Data completeness (in resolution range)	99.4 (17.64-1.20) 99.4 (17.64-1.20)	Depositor EDS
R_{merge}	(Not available)	Depositor
R_{sym}	(Not available)	Depositor
$\langle I/\sigma(I) \rangle$ ¹	2.90 (at 1.20Å)	Xtriage
Refinement program	REFMAC 5.6.0117	Depositor
R, R_{free}	0.154 , 0.174 0.160 , 0.179	Depositor DCC
R_{free} test set	10646 reflections (5.29%)	DCC
Wilson B-factor (Å ²)	8.9	Xtriage
Anisotropy	0.040	Xtriage
Bulk solvent k_{sol} (e/Å ³), B_{sol} (Å ²)	0.42 , 51.0	EDS
Estimated twinning fraction	No twinning to report.	Xtriage
L-test for twinning ²	$\langle L \rangle = 0.50$, $\langle L^2 \rangle = 0.33$	Xtriage
Outliers	0 of 212034 reflections	Xtriage
F_o, F_c correlation	0.97	EDS
Total number of atoms	6287	wwPDB-VP
Average B, all atoms (Å ²)	12.0	wwPDB-VP

Xtriage's analysis on translational NCS is as follows: *The largest off-origin peak in the Patterson function is 4.99% of the height of the origin peak. No significant pseudotranslation is detected.*

¹Intensities estimated from amplitudes.

²Theoretical values of $\langle |L| \rangle$, $\langle L^2 \rangle$ for acentric reflections are 0.5, 0.375 respectively for untwinned datasets, and 0.333, 0.2 for perfectly twinned datasets.

5 Model quality ⓘ

5.1 Standard geometry ⓘ

Bond lengths and bond angles in the following residue types are not validated in this section: GOL, 5SD, EDO, NAP, SO4, AOX

The Z score for a bond length (or angle) is the number of standard deviations the observed value is removed from the expected value. A bond length (or angle) with $|Z| > 5$ is considered an outlier worth inspection. RMSZ is the root-mean-square of all Z scores of the bond lengths (or angles).

Mol	Chain	Bond lengths		Bond angles	
		RMSZ	$\# Z > 5$	RMSZ	$\# Z > 5$
1	A	1.25	4/2748 (0.1%)	1.21	14/3720 (0.4%)
1	B	1.28	4/2718 (0.1%)	1.19	9/3680 (0.2%)
All	All	1.26	8/5466 (0.1%)	1.20	23/7400 (0.3%)

All (8) bond length outliers are listed below:

Mol	Chain	Res	Type	Atoms	Z	Observed(Å)	Ideal(Å)
1	B	130	PRO	N-CD	5.92	1.56	1.47
1	B	274	GLU	CD-OE1	-5.82	1.19	1.25
1	B	43	GLU	CD-OE1	5.66	1.31	1.25
1	A	271	SER	CB-OG	5.50	1.49	1.42
1	A	290	SER	CB-OG	-5.25	1.35	1.42
1	A	292	GLU	CG-CD	-5.15	1.44	1.51
1	A	292	GLU	CD-OE2	5.12	1.31	1.25
1	B	292	GLU	CG-CD	-5.11	1.44	1.51

All (23) bond angle outliers are listed below:

Mol	Chain	Res	Type	Atoms	Z	Observed(°)	Ideal(°)
1	B	276	ARG	NE-CZ-NH2	-7.19	116.71	120.30
1	B	132	ASP	CB-CG-OD1	6.90	124.51	118.30
1	B	71	ASP	CB-CG-OD2	-6.58	112.38	118.30
1	A	200[A]	ARG	CA-C-O	6.23	133.19	120.10
1	A	200[B]	ARG	CA-C-O	6.23	133.19	120.10
1	B	263	ARG	NE-CZ-NH2	-6.14	117.23	120.30
1	A	110	TYR	CG-CD1-CE1	5.99	126.09	121.30
1	A	223	ARG	NE-CZ-NH1	5.99	123.30	120.30
1	A	175	MET	CG-SD-CE	-5.96	90.66	100.20
1	A	250	ARG	NE-CZ-NH2	-5.90	117.35	120.30
1	A	244	LEU	CB-CG-CD1	5.87	120.97	111.00

Continued on next page...

Continued from previous page...

Mol	Chain	Res	Type	Atoms	Z	Observed(°)	Ideal(°)
1	A	238	ASP	CB-CG-OD2	-5.81	113.07	118.30
1	A	276	ARG	NE-CZ-NH1	-5.75	117.43	120.30
1	B	292	GLU	OE1-CD-OE2	-5.54	116.66	123.30
1	A	229	ASP	CB-CG-OD2	-5.40	113.44	118.30
1	B	39	LYS	CD-CE-NZ	-5.38	99.33	111.70
1	B	71	ASP	CB-CG-OD1	5.37	123.13	118.30
1	B	304	ARG	NE-CZ-NH2	-5.26	117.67	120.30
1	A	304	ARG	NE-CZ-NH2	5.23	122.91	120.30
1	A	309	ASP	CB-CG-OD2	-5.16	113.66	118.30
1	B	197	PHE	CB-CG-CD1	-5.04	117.27	120.80
1	A	200[A]	ARG	CA-C-N	-5.03	106.14	117.20
1	A	200[B]	ARG	CA-C-N	-5.03	106.14	117.20

There are no chirality outliers.

There are no planarity outliers.

5.2 Too-close contacts ⓘ

In the following table, the Non-H and H(model) columns list the number of non-hydrogen atoms and hydrogen atoms in the chain respectively. The H(added) column lists the number of hydrogen atoms added and optimized by MolProbity. The Clashes column lists the number of clashes within the asymmetric unit, whereas Symm-Clashes lists symmetry related clashes.

Mol	Chain	Non-H	H(model)	H(added)	Clashes	Symm-Clashes
1	A	2657	0	2701	31	0
1	B	2636	0	2675	35	0
2	A	48	0	25	5	0
2	B	48	0	24	6	0
3	A	21	0	28	7	0
4	A	5	0	0	1	0
4	B	5	0	0	1	0
5	A	4	0	6	0	0
5	B	4	0	6	1	0
6	A	6	0	8	0	0
7	B	21	0	30	5	0
8	A	432	0	0	10	0
8	B	400	0	0	2	0
All	All	6287	0	5503	66	0

The all-atom clashscore is defined as the number of clashes found per 1000 atoms (including hydrogen atoms). The all-atom clashscore for this structure is 6.

All (66) close contacts within the same asymmetric unit are listed below, sorted by their clash magnitude.

Atom-1	Atom-2	Interatomic distance (Å)	Clash overlap (Å)
1:A:200[B]:ARG:HD3	8:A:887:HOH:O	1.26	1.26
1:A:43:GLU:HG2	8:A:867:HOH:O	1.40	1.19
1:A:274:GLU:HG3	8:A:831:HOH:O	1.51	1.08
1:B:129:ILE:HD11	7:B:402:AOX:H2O	1.37	1.01
1:B:129:ILE:CD1	7:B:402:AOX:H2O	1.97	0.94
1:A:129:ILE:HD11	3:A:402:5SD:H7C2	1.56	0.86
1:B:149:GLU:HG3	1:B:179:LYS:HE3	1.58	0.84
3:A:402:5SD:H2C1	8:A:892:HOH:O	1.80	0.81
1:B:149:GLU:OE2	1:B:179:LYS:CE	2.29	0.81
1:A:4:LYS:HE2	8:A:829:HOH:O	1.85	0.76
1:A:280:ASN:HD21	2:A:401:NAP:H61A	1.34	0.74
1:B:149:GLU:CG	1:B:179:LYS:HE3	2.19	0.72
1:B:280:ASN:HD21	2:B:401:NAP:H61A	1.36	0.72
1:B:149:GLU:OE2	1:B:179:LYS:HE2	1.89	0.70
1:B:200[B]:ARG:HH12	1:B:207[B]:LYS:NZ	1.89	0.70
1:A:6:GLN:HE21	1:B:9:LYS:H	1.43	0.66
1:B:200[B]:ARG:HH12	1:B:207[B]:LYS:HZ2	1.43	0.65
1:A:36[B]:GLU:CD	8:A:501:HOH:O	2.35	0.65
1:A:9:LYS:H	1:B:6:GLN:HE21	1.45	0.64
1:A:57:ASN:HD22	1:A:57:ASN:C	2.03	0.62
1:A:279:GLN:NE2	2:A:401:NAP:H62A	1.97	0.61
1:A:33:LYS:HE3	8:A:791:HOH:O	2.01	0.60
1:B:57:ASN:C	1:B:57:ASN:HD22	2.03	0.60
1:A:207[B]:LYS:NZ	4:A:403:SO4:O3	2.35	0.59
1:B:279:GLN:NE2	2:B:401:NAP:H62A	2.00	0.58
1:A:207[A]:LYS:HG2	8:B:803:HOH:O	2.02	0.57
1:A:6:GLN:NE2	1:B:9:LYS:H	2.02	0.56
1:B:250:ARG:HH11	1:B:282:GLN:HE21	1.56	0.54
1:A:308:LEU:HD22	3:A:402:5SD:H162	1.89	0.53
2:A:401:NAP:H3D	2:A:401:NAP:H6N	1.90	0.53
1:A:9:LYS:H	1:B:6:GLN:NE2	2.06	0.52
2:B:401:NAP:H3D	2:B:401:NAP:H6N	1.92	0.52
1:B:96:ARG:N	1:B:97:PRO:CD	2.72	0.52
1:B:270:LYS:O	2:B:401:NAP:H8A	2.10	0.51
1:B:207[B]:LYS:NZ	4:B:403:SO4:O2	2.44	0.51
1:A:270:LYS:O	2:A:401:NAP:H8A	2.12	0.50
1:B:129:ILE:CD1	7:B:402:AOX:C15	2.82	0.49
1:A:129:ILE:CD1	3:A:402:5SD:H7C2	2.36	0.49
1:B:96:ARG:HB3	1:B:97:PRO:HD3	1.95	0.49
1:A:280:ASN:ND2	2:A:401:NAP:H61A	2.07	0.48

Continued on next page...

Continued from previous page...

Atom-1	Atom-2	Interatomic distance (Å)	Clash overlap (Å)
1:B:96:ARG:N	1:B:97:PRO:HD2	2.28	0.48
1:B:278:ARG:O	1:B:281[B]:VAL:HG22	2.14	0.47
1:B:301:ARG:HG3	1:B:303:VAL:HG23	1.96	0.47
1:A:308:LEU:CD2	3:A:402:5SD:H162	2.45	0.46
1:B:43:GLU:HG3	8:B:818:HOH:O	2.16	0.46
1:A:200[A]:ARG:HD3	1:A:200[A]:ARG:HA	1.79	0.46
1:B:149:GLU:OE2	1:B:179:LYS:HE3	2.14	0.45
1:B:57:ASN:ND2	1:B:57:ASN:C	2.70	0.45
1:B:94:LEU:C	1:B:97:PRO:HD2	2.37	0.45
1:A:137:ILE:HD11	1:A:310:ILE:HD12	1.99	0.44
1:A:129:ILE:HD11	3:A:402:5SD:C7	2.38	0.44
1:B:200[B]:ARG:NH1	1:B:207[B]:LYS:HZ2	2.12	0.44
1:B:280:ASN:ND2	2:B:401:NAP:H61A	2.07	0.44
1:B:24:TYR:CZ	7:B:402:AOX:H1	2.53	0.43
1:B:188:CYS:HA	1:B:212:VAL:O	2.19	0.43
1:A:33:LYS:NZ	1:A:36[A]:GLU:OE2	2.32	0.43
1:A:129:ILE:HD12	3:A:402:5SD:H6C1	2.01	0.43
1:A:86:TRP:CG	1:A:87:SER:N	2.87	0.43
1:A:274:GLU:CG	8:A:831:HOH:O	2.33	0.42
1:A:48:HIS:HA	1:A:80:PHE:O	2.19	0.42
1:A:33:LYS:HD2	8:A:524:HOH:O	2.18	0.42
7:B:402:AOX:H27	7:B:402:AOX:H10	1.64	0.41
1:B:249:LYS:HE3	1:B:249:LYS:HB2	1.85	0.41
1:B:190:GLN:OE1	2:B:401:NAP:H2N	2.20	0.41
1:A:226:PRO:HA	8:A:842:HOH:O	2.20	0.41
1:B:282:GLN:OE1	5:B:404:EDO:H12	2.21	0.40

There are no symmetry-related clashes.

5.3 Torsion angles [i](#)

5.3.1 Protein backbone [i](#)

In the following table, the Percentiles column shows the percent Ramachandran outliers of the chain as a percentile score with respect to all X-ray entries followed by that with respect to entries of similar resolution.

The Analysed column shows the number of residues for which the backbone conformation was analysed, and the total number of residues.

Mol	Chain	Analysed	Favoured	Allowed	Outliers	Percentiles	
1	A	333/325 (102%)	324 (97%)	7 (2%)	2 (1%)	30	6
1	B	330/325 (102%)	323 (98%)	7 (2%)	0	100	100
All	All	663/650 (102%)	647 (98%)	14 (2%)	2 (0%)	52	16

All (2) Ramachandran outliers are listed below:

Mol	Chain	Res	Type
1	A	200[A]	ARG
1	A	200[B]	ARG

5.3.2 Protein sidechains ⓘ

In the following table, the Percentiles column shows the percent sidechain outliers of the chain as a percentile score with respect to all X-ray entries followed by that with respect to entries of similar resolution.

The Analysed column shows the number of residues for which the sidechain conformation was analysed, and the total number of residues.

Mol	Chain	Analysed	Rotameric	Outliers	Percentiles	
1	A	297/287 (104%)	290 (98%)	7 (2%)	57	15
1	B	294/287 (102%)	293 (100%)	1 (0%)	94	80
All	All	591/574 (103%)	583 (99%)	8 (1%)	82	38

All (8) residues with a non-rotameric sidechain are listed below:

Mol	Chain	Res	Type
1	A	-1	SER
1	A	7[A]	CYS
1	A	7[B]	CYS
1	A	57	ASN
1	A	133	GLU
1	A	200[A]	ARG
1	A	200[B]	ARG
1	B	57	ASN

Some sidechains can be flipped to improve hydrogen bonding and reduce clashes. All (13) such sidechains are listed below:

Mol	Chain	Res	Type
1	A	6	GLN

Continued on next page...

Continued from previous page...

Mol	Chain	Res	Type
1	A	57	ASN
1	A	105	ASN
1	A	167	ASN
1	A	279	GLN
1	A	280	ASN
1	B	6	GLN
1	B	57	ASN
1	B	105	ASN
1	B	167	ASN
1	B	275	GLN
1	B	279	GLN
1	B	280	ASN

5.3.3 RNA [i](#)

There are no RNA molecules in this entry.

5.4 Non-standard residues in protein, DNA, RNA chains [i](#)

There are no non-standard protein/DNA/RNA residues in this entry.

5.5 Carbohydrates [i](#)

There are no carbohydrates in this entry.

5.6 Ligand geometry [i](#)

9 ligands are modelled in this entry.

In the following table, the Counts columns list the number of bonds (or angles) for which Mogul statistics could be retrieved, the number of bonds (or angles) that are observed in the model and the number of bonds (or angles) that are defined in the chemical component dictionary. The Link column lists molecule types, if any, to which the group is linked. The Z score for a bond length (or angle) is the number of standard deviations the observed value is removed from the expected value. A bond length (or angle) with $|Z| > 2$ is considered an outlier worth inspection. RMSZ is the root-mean-square of all Z scores of the bond lengths (or angles).

Mol	Type	Chain	Res	Link	Bond lengths			Bond angles		
					Counts	RMSZ	$\# Z > 2$	Counts	RMSZ	$\# Z > 2$
2	NAP	A	401	-	45,52,52	1.04	4 (8%)	55,80,80	1.46	9 (16%)

Mol	Type	Chain	Res	Link	Bond lengths			Bond angles		
					Counts	RMSZ	# Z > 2	Counts	RMSZ	# Z > 2
3	5SD	A	402	-	24,24,24	1.47	3 (12%)	39,39,39	2.54	18 (46%)
4	SO4	A	403	-	4,4,4	1.25	0	6,6,6	1.25	1 (16%)
5	EDO	A	404	-	3,3,3	0.63	0	2,2,2	1.42	0
6	GOL	A	405	-	5,5,5	0.56	0	5,5,5	0.80	0
2	NAP	B	401	-	45,52,52	1.39	6 (13%)	55,80,80	1.45	10 (18%)
7	AOX	B	402	-	24,24,24	3.64	13 (54%)	39,39,39	2.84	17 (43%)
4	SO4	B	403	-	4,4,4	1.21	1 (25%)	6,6,6	1.97	2 (33%)
5	EDO	B	404	-	3,3,3	0.66	0	2,2,2	0.61	0

In the following table, the Chirals column lists the number of chiral outliers, the number of chiral centers analysed, the number of these observed in the model and the number defined in the chemical component dictionary. Similar counts are reported in the Torsion and Rings columns. '-' means no outliers of that kind were identified.

Mol	Type	Chain	Res	Link	Chirals	Torsions	Rings
2	NAP	A	401	-	-	0/27/67/67	0/5/5/5
3	5SD	A	402	-	-	0/0/58/58	0/4/4/4
4	SO4	A	403	-	-	0/0/0/0	0/0/0/0
5	EDO	A	404	-	-	0/1/1/1	0/0/0/0
6	GOL	A	405	-	-	0/4/4/4	0/0/0/0
2	NAP	B	401	-	-	0/27/67/67	0/5/5/5
7	AOX	B	402	-	-	0/0/58/58	0/4/4/4
4	SO4	B	403	-	-	0/0/0/0	0/0/0/0
5	EDO	B	404	-	-	0/1/1/1	0/0/0/0

All (27) bond length outliers are listed below:

Mol	Chain	Res	Type	Atoms	Z	Observed(Å)	Ideal(Å)
7	B	402	AOX	C16-C17	-8.17	1.37	1.51
7	B	402	AOX	C13-C17	-7.42	1.41	1.52
7	B	402	AOX	C13-C14	-6.85	1.40	1.54
7	B	402	AOX	C10-C5	-6.05	1.45	1.55
7	B	402	AOX	C7-C8	-5.68	1.42	1.53
2	B	401	NAP	O3B-C3B	-4.59	1.32	1.43
3	A	402	5SD	C1-C10	-4.08	1.46	1.54
7	B	402	AOX	C1-C10	-3.94	1.46	1.54
7	B	402	AOX	C19-C10	-3.87	1.47	1.54
2	B	401	NAP	O4B-C4B	-3.36	1.37	1.45
2	B	401	NAP	O5B-C5B	-3.31	1.31	1.44
7	B	402	AOX	C12-C13	-2.94	1.48	1.54
3	A	402	5SD	C10-C9	-2.90	1.50	1.56

Continued on next page...

Continued from previous page...

Mol	Chain	Res	Type	Atoms	Z	Observed(Å)	Ideal(Å)
7	B	402	AOX	C8-C9	-2.84	1.48	1.53
3	A	402	5SD	C8-C9	-2.83	1.48	1.53
7	B	402	AOX	C15-C14	-2.73	1.48	1.54
2	B	401	NAP	C3B-C4B	-2.44	1.46	1.53
2	B	401	NAP	C8A-N7A	-2.28	1.30	1.34
7	B	402	AOX	C2-C3	-2.07	1.46	1.51
2	A	401	NAP	C3N-C7N	2.07	1.53	1.50
4	B	403	SO4	O4-S	2.09	1.54	1.47
7	B	402	AOX	O3-C3	2.24	1.50	1.43
2	A	401	NAP	C7N-N7N	2.45	1.37	1.33
2	B	401	NAP	C7N-N7N	2.61	1.38	1.33
2	A	401	NAP	O4D-C1D	2.62	1.45	1.41
2	A	401	NAP	C5A-C4A	2.79	1.46	1.40
7	B	402	AOX	C1-C2	2.88	1.59	1.53

All (57) bond angle outliers are listed below:

Mol	Chain	Res	Type	Atoms	Z	Observed(°)	Ideal(°)
7	B	402	AOX	C9-C8-C14	-6.71	99.57	109.09
7	B	402	AOX	C13-C14-C8	-5.98	106.79	113.11
3	A	402	5SD	C1-C10-C9	-5.88	102.10	111.43
3	A	402	5SD	O17-C17-C16	-5.57	118.78	125.75
7	B	402	AOX	C11-C12-C13	-5.26	101.69	112.78
7	B	402	AOX	C15-C14-C8	-4.62	111.29	119.06
3	A	402	5SD	C12-C13-C14	-4.42	102.19	108.99
2	A	401	NAP	N3A-C2A-N1A	-4.29	125.50	128.87
7	B	402	AOX	C7-C8-C14	-4.20	104.83	112.02
7	B	402	AOX	C6-C5-C10	-4.20	105.02	112.25
4	B	403	SO4	O4-S-O3	-3.93	93.24	109.09
7	B	402	AOX	C18-C13-C12	-3.50	106.77	111.14
7	B	402	AOX	C16-C15-C14	-3.40	97.75	103.09
2	B	401	NAP	N3A-C2A-N1A	-3.23	126.34	128.87
3	A	402	5SD	C7-C6-C5	-3.03	105.51	111.91
7	B	402	AOX	C12-C11-C9	-3.01	107.65	113.09
2	A	401	NAP	C5B-C4B-C3B	-2.88	104.07	115.20
7	B	402	AOX	C6-C7-C8	-2.75	107.52	112.07
2	B	401	NAP	O3B-C3B-C2B	-2.73	103.24	111.13
3	A	402	5SD	C14-C13-C17	-2.61	97.28	100.55
3	A	402	5SD	C15-C14-C8	-2.59	114.70	119.06
3	A	402	5SD	C11-C12-C13	-2.54	107.43	112.78
2	B	401	NAP	O3B-C3B-C4B	-2.52	103.47	111.01
2	B	401	NAP	O4B-C4B-C3B	-2.45	100.18	105.16

Continued on next page...

Continued from previous page...

Mol	Chain	Res	Type	Atoms	Z	Observed(°)	Ideal(°)
7	B	402	AOX	C7-C8-C9	-2.38	107.39	110.47
2	B	401	NAP	O4D-C1D-N1N	-2.34	105.58	108.10
7	B	402	AOX	O3-C3-C2	-2.22	104.67	110.04
7	B	402	AOX	C18-C13-C14	-2.17	109.66	112.94
2	B	401	NAP	C1B-N9A-C4A	-2.16	124.39	126.81
2	A	401	NAP	C4B-O4B-C1B	-2.10	107.42	109.64
2	A	401	NAP	O4D-C1D-N1N	-2.03	105.92	108.10
2	B	401	NAP	C5B-C4B-C3B	2.09	123.30	115.20
3	A	402	5SD	C12-C13-C17	2.15	120.05	116.58
2	A	401	NAP	N6A-C6A-N1A	2.17	122.16	118.52
4	B	403	SO4	O2-S-O1	2.29	117.25	109.59
3	A	402	5SD	C16-C17-C13	2.30	110.97	108.64
7	B	402	AOX	O3-C3-C4	2.38	114.67	109.86
3	A	402	5SD	C19-C10-C1	2.38	112.26	108.23
2	B	401	NAP	C4B-O4B-C1B	2.39	112.18	109.64
2	A	401	NAP	C3B-C2B-C1B	2.42	107.27	102.63
2	A	401	NAP	C2A-N1A-C6A	2.44	123.11	118.77
3	A	402	5SD	C7-C8-C14	2.49	116.28	112.02
3	A	402	5SD	C4-C5-C10	2.50	115.35	112.85
4	A	403	SO4	O4-S-O3	2.56	119.43	109.09
2	A	401	NAP	O2N-PN-O1N	2.62	126.22	112.56
7	B	402	AOX	C1-C2-C3	2.73	114.05	110.41
3	A	402	5SD	C19-C10-C5	2.84	115.33	110.28
3	A	402	5SD	O17-C17-C13	2.89	130.22	125.91
3	A	402	5SD	C1-C2-C3	2.92	117.83	111.88
2	B	401	NAP	O2B-C2B-C3B	2.97	122.79	111.73
2	A	401	NAP	O4B-C4B-C3B	3.48	112.21	105.16
2	B	401	NAP	C2B-C3B-C4B	3.69	110.58	101.85
3	A	402	5SD	C13-C14-C8	3.71	117.03	113.11
3	A	402	5SD	C18-C13-C14	3.78	118.66	112.94
3	A	402	5SD	C15-C14-C13	4.96	107.99	104.05
7	B	402	AOX	C1-C10-C5	4.96	113.23	107.76
7	B	402	AOX	C14-C13-C17	5.00	106.80	100.55

There are no chirality outliers.

There are no torsion outliers.

There are no ring outliers.

7 monomers are involved in 26 short contacts:

Mol	Chain	Res	Type	Clashes	Symm-Clashes
2	A	401	NAP	5	0

Continued on next page...

Continued from previous page...

Mol	Chain	Res	Type	Clashes	Symm-Clashes
3	A	402	5SD	7	0
4	A	403	SO4	1	0
2	B	401	NAP	6	0
7	B	402	AOX	5	0
4	B	403	SO4	1	0
5	B	404	EDO	1	0

5.7 Other polymers [i](#)

There are no such residues in this entry.

5.8 Polymer linkage issues [i](#)

There are no chain breaks in this entry.

6 Fit of model and data ⓘ

6.1 Protein, DNA and RNA chains ⓘ

In the following table, the column labelled ‘#RSRZ> 2’ contains the number (and percentage) of RSRZ outliers, followed by percent RSRZ outliers for the chain as percentile scores relative to all X-ray entries and entries of similar resolution. The OWAB column contains the minimum, median, 95th percentile and maximum values of the occupancy-weighted average B-factor per residue. The column labelled ‘Q< 0.9’ lists the number of (and percentage) of residues with an average occupancy less than 0.9.

Mol	Chain	Analysed	<RSRZ>	#RSRZ>2	OWAB(Å ²)	Q<0.9
1	A	325/325 (100%)	0.01	10 (3%) 52 49	6, 9, 20, 46	0
1	B	325/325 (100%)	-0.00	9 (2%) 56 52	6, 10, 21, 48	0
All	All	650/650 (100%)	0.00	19 (2%) 55 51	6, 9, 21, 48	0

All (19) RSRZ outliers are listed below:

Mol	Chain	Res	Type	RSRZ
1	A	0	VAL	10.3
1	B	216	TYR	8.1
1	A	-1	SER	6.5
1	B	-1	SER	5.3
1	B	0	VAL	4.6
1	B	133	GLU	3.7
1	B	136	LYS	3.5
1	A	2	ASP	3.5
1	A	134	ASN	3.5
1	A	133	GLU	3.2
1	A	1	ASP	3.2
1	A	200[A]	ARG	3.0
1	B	3	SER	2.9
1	A	3	SER	2.6
1	B	2	ASP	2.6
1	B	27	ALA	2.6
1	B	134	ASN	2.4
1	A	323	TYR	2.3
1	A	135	GLY	2.2

6.2 Non-standard residues in protein, DNA, RNA chains ⓘ

There are no non-standard protein/DNA/RNA residues in this entry.

6.3 Carbohydrates [i](#)

There are no carbohydrates in this entry.

6.4 Ligands [i](#)

In the following table, the Atoms column lists the number of modelled atoms in the group and the number defined in the chemical component dictionary. LLDF column lists the quality of electron density of the group with respect to its neighbouring residues in protein, DNA or RNA chains. The B-factors column lists the minimum, median, 95th percentile and maximum values of B factors of atoms in the group. The column labelled 'Q< 0.9' lists the number of atoms with occupancy less than 0.9.

Mol	Type	Chain	Res	Atoms	RSCC	RSR	LLDF	B-factors(\AA^2)	Q<0.9
3	5SD	A	402	21/21	0.51	0.40	16.77	22,24,25,30	21
7	AOX	B	402	21/21	0.51	0.30	14.57	21,25,30,33	21
4	SO4	B	403	5/5	0.84	0.25	8.12	6,7,9,11	5
6	GOL	A	405	6/6	0.92	0.14	6.08	18,19,22,25	0
5	EDO	A	404	4/4	0.82	0.15	2.45	13,17,17,24	0
4	SO4	A	403	5/5	0.88	0.21	2.43	6,7,8,10	5
5	EDO	B	404	4/4	0.87	0.16	1.77	15,23,30,41	0
2	NAP	A	401	48/48	0.98	0.08	0.54	7,9,11,16	0
2	NAP	B	401	48/48	0.98	0.08	0.03	7,10,13,20	0

6.5 Other polymers [i](#)

There are no such residues in this entry.