



wwPDB X-ray Structure Validation Summary Report ⓘ

Feb 1, 2016 – 10:23 PM GMT

PDB ID : 4XPF
Title : X-ray structure of Drosophila dopamine transporter with subsiteB mutations (D121G/S426M) bound to RTI-55
Authors : Penmatsa, A.; Wang, K.H.; Gouaux, E.
Deposited on : 2015-01-16
Resolution : 3.27 Å(reported)

This is a wwPDB X-ray Structure Validation Summary Report for a publicly released PDB entry.
We welcome your comments at validation@mail.wwpdb.org
A user guide is available at
<http://wwpdb.org/validation/2016/XrayValidationReportHelp>
with specific help available everywhere you see the ⓘ symbol.

The following versions of software and data (see [references ⓘ](#)) were used in the production of this report:

MolProbity : 4.02b-467
Mogul : 1.7 (RC4), CSD as536be (2015)
Xtriage (Phenix) : 1.9-1692
EDS : rb-20026688
Percentile statistics : 20151230.v01 (using entries in the PDB archive December 30th 2015)
Refmac : 5.8.0135
CCP4 : 6.5.0
Ideal geometry (proteins) : Engh & Huber (2001)
Ideal geometry (DNA, RNA) : Parkinson et al. (1996)
Validation Pipeline (wwPDB-VP) : trunk26865

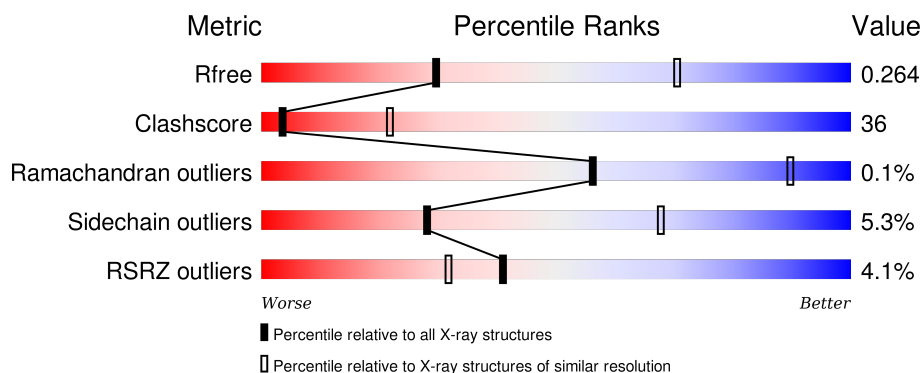
1 Overall quality at a glance

The following experimental techniques were used to determine the structure:

X-RAY DIFFRACTION

The reported resolution of this entry is 3.27 Å.

Percentile scores (ranging between 0-100) for global validation metrics of the entry are shown in the following graphic. The table shows the number of entries on which the scores are based.



Metric	Whole archive (#Entries)	Similar resolution (#Entries, resolution range(Å))
R_{free}	91344	1756 (3.36-3.20)
Clashscore	102246	1941 (3.36-3.20)
Ramachandran outliers	100387	1905 (3.36-3.20)
Sidechain outliers	100360	1903 (3.36-3.20)
RSRZ outliers	91569	1764 (3.36-3.20)

The table below summarises the geometric issues observed across the polymeric chains and their fit to the electron density. The red, orange, yellow and green segments on the lower bar indicate the fraction of residues that contain outliers for ≥ 3 , 2, 1 and 0 types of geometric quality criteria. A grey segment represents the fraction of residues that are not modelled. The numeric value for each fraction is indicated below the corresponding segment, with a dot representing fractions $\leq 5\%$. The upper red bar (where present) indicates the fraction of residues that have poor fit to the electron density. The numeric value is given above the bar.

Mol	Chain	Length	Quality of chain
1	A	543	<div> <div style="width: 100%; height: 10px; background: linear-gradient(to right, red, orange, yellow, green);"></div> <div style="display: flex; justify-content: space-between; margin-top: 5px;"> 48% 47% •• </div> </div>
2	L	237	<div> <div style="width: 100%; height: 10px; background: linear-gradient(to right, red, orange, yellow, green);"></div> <div style="display: flex; justify-content: space-between; margin-top: 5px;"> 8% 56% 32% • 10% </div> </div>
3	H	240	<div> <div style="width: 100%; height: 10px; background: linear-gradient(to right, red, orange, yellow, green);"></div> <div style="display: flex; justify-content: space-between; margin-top: 5px;"> 6% 40% 45% 5% 10% </div> </div>

The following table lists non-polymeric compounds, carbohydrate monomers and non-standard residues in protein, DNA, RNA chains that are outliers for geometric or electron-density-fit criteria:

Mol	Type	Chain	Res	Chirality	Geometry	Clashes	Electron density
5	P4G	A	702	-	-	-	X
6	42F	A	703	-	-	X	X
7	CLR	A	705	-	-	-	X

2 Entry composition

There are 10 unique types of molecules in this entry. The entry contains 7532 atoms, of which 18 are hydrogens and 0 are deuteriums.

In the tables below, the ZeroOcc column contains the number of atoms modelled with zero occupancy, the AltConf column contains the number of residues with at least one atom in alternate conformation and the Trace column contains the number of residues modelled with at most 2 atoms.

- Molecule 1 is a protein called Dopamine transporter-protein.

Mol	Chain	Residues	Atoms					ZeroOcc	AltConf	Trace
1	A	532	Total	C	N	O	S	0	0	0
			4167	2796	642	710	19			

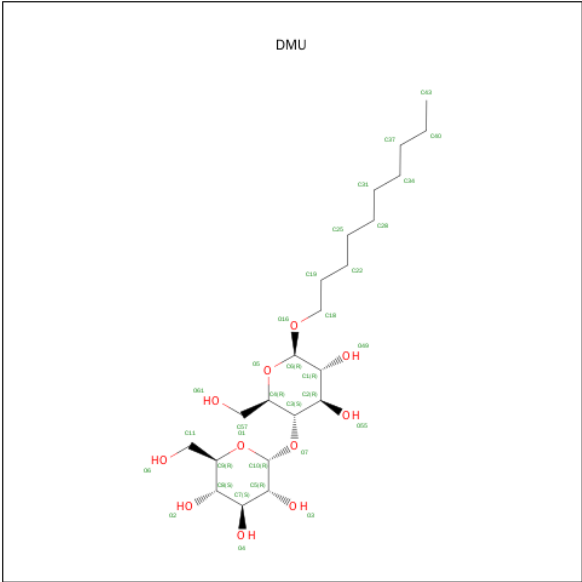
- Molecule 2 is a protein called ANTIBODY FRAGMENT HEAVY CHAIN-PROTEIN, 9D5-HEAVY CHAIN.

Mol	Chain	Residues	Atoms					ZeroOcc	AltConf	Trace
2	L	214	Total	C	N	O	S	0	0	0
			1616	1004	267	337	8			

- Molecule 3 is a protein called ANTIBODY FRAGMENT LIGHT CHAIN-PROTEIN, 9D5-LIGHT CHAIN.

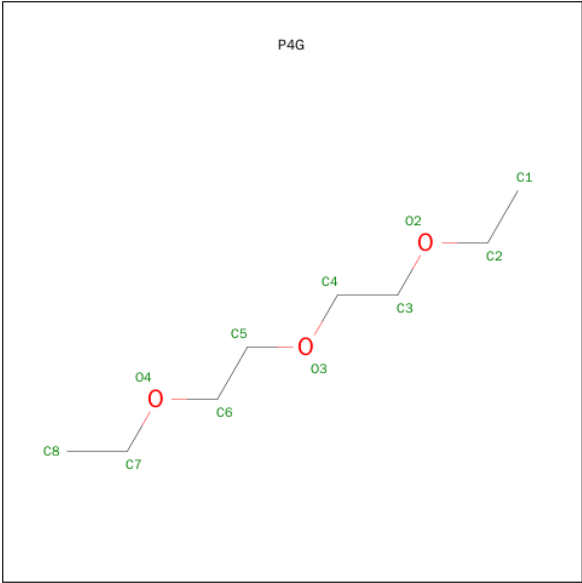
Mol	Chain	Residues	Atoms					ZeroOcc	AltConf	Trace
3	H	215	Total	C	N	O	S	0	0	0
			1602	1011	269	314	8			

- Molecule 4 is DECYL-BETA-D-MALTOPYRANOSIDE (three-letter code: DMU) (formula: C₂₂H₄₂O₁₁).



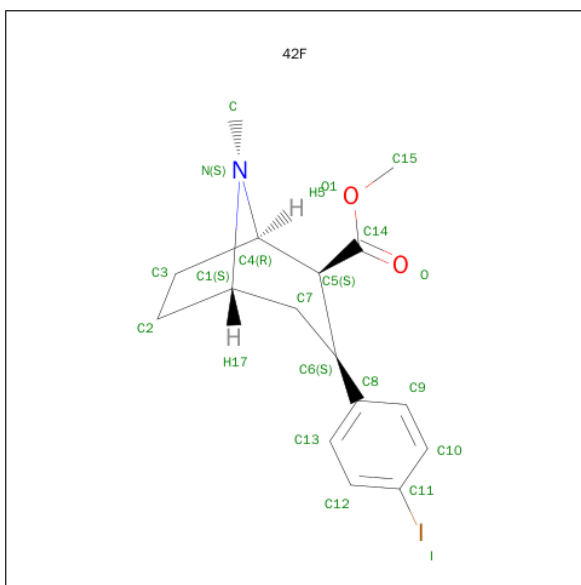
Mol	Chain	Residues	Atoms			ZeroOcc	AltConf
4	A	1	Total	C	O	0	0
			33	22	11		

- Molecule 5 is 1-ETHOXY-2-(2-ETHOXYETHOXY)ETHANE (three-letter code: P4G) (formula: C₈H₁₈O₃).



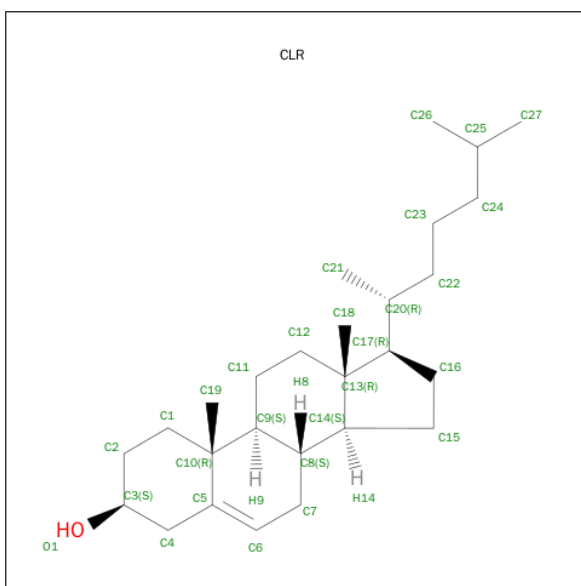
Mol	Chain	Residues	Atoms				ZeroOcc	AltConf
5	A	1	Total	C	H	O	0	0
			29	8	18	3		

- Molecule 6 is methyl (1R,2S,3S,5S)-3-(4-iodophenyl)-8-methyl-8-azabicyclo[3.2.1]octane-2-carboxylate (three-letter code: 42F) (formula: C₁₆H₂₀INO₂).



Mol	Chain	Residues	Atoms					ZeroOcc	AltConf
6	A	1	Total	C	I	N	O	0	0
			20	16	1	1	2		

- Molecule 7 is CHOLESTEROL (three-letter code: CLR) (formula: $C_{27}H_{46}O$).



Mol	Chain	Residues	Atoms			ZeroOcc	AltConf
7	A	1	Total	C	O	0	0
			28	27	1		
7	A	1	Total	C	O	0	0
			28	27	1		

- Molecule 8 is SODIUM ION (three-letter code: NA) (formula: Na).

Mol	Chain	Residues	Atoms	ZeroOcc	AltConf
8	A	2	Total Na 2 2	0	0

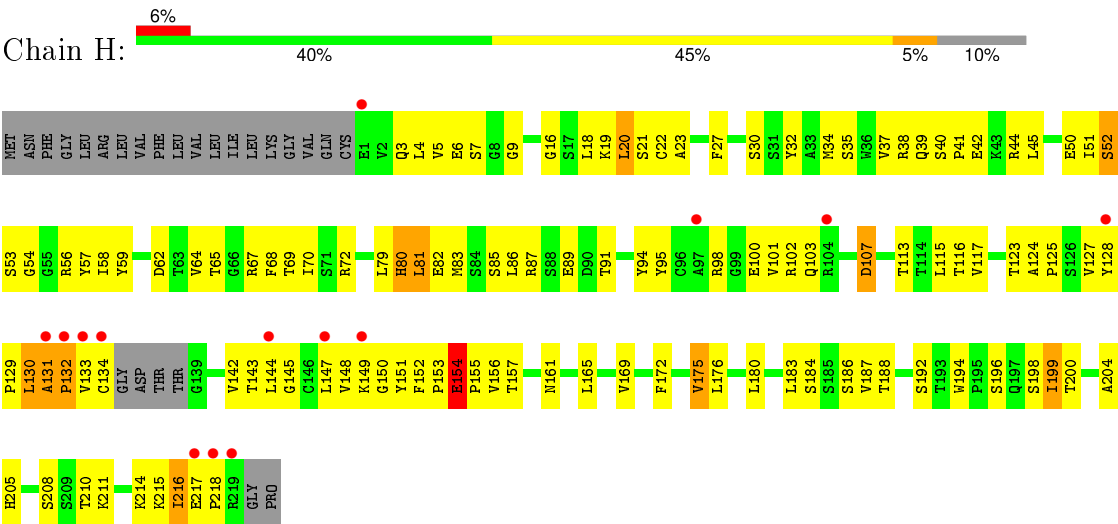
- Molecule 9 is CHLORIDE ION (three-letter code: CL) (formula: Cl).

Mol	Chain	Residues	Atoms	ZeroOcc	AltConf
9	A	1	Total Cl 1 1	0	0

- Molecule 10 is water.

Mol	Chain	Residues	Atoms	ZeroOcc	AltConf
10	A	1	Total O 1 1	0	0
10	L	3	Total O 3 3	0	0
10	H	2	Total O 2 2	0	0

● Molecule 3: ANTIBODY FRAGMENT LIGHT CHAIN-PROTEIN, 9D5-LIGHT CHAIN



4 Data and refinement statistics

Property	Value	Source
Space group	P 21 21 21	Depositor
Cell constants a, b, c, α , β , γ	97.42Å 140.31Å 166.96Å 90.00° 90.00° 90.00°	Depositor
Resolution (Å)	48.32 – 3.27 48.32 – 3.27	Depositor EDS
% Data completeness (in resolution range)	89.1 (48.32-3.27) 89.3 (48.32-3.27)	Depositor EDS
R_{merge}	0.12	Depositor
R_{sym}	(Not available)	Depositor
$\langle I/\sigma(I) \rangle$ ¹	1.34 (at 3.25Å)	Xtriage
Refinement program	PHENIX	Depositor
R, R_{free}	0.241 , 0.296 0.267 , 0.264	Depositor DCC
R_{free} test set	1599 reflections (5.24%)	DCC
Wilson B-factor (Å ²)	113.8	Xtriage
Anisotropy	0.317	Xtriage
Bulk solvent k_{sol} (e/Å ³), B_{sol} (Å ²)	0.24 , 73.4	EDS
Estimated twinning fraction	No twinning to report.	Xtriage
L-test for twinning ²	$\langle L \rangle = 0.51$, $\langle L^2 \rangle = 0.34$	Xtriage
Outliers	1 of 32109 reflections (0.003%)	Xtriage
F_o, F_c correlation	0.90	EDS
Total number of atoms	7532	wwPDB-VP
Average B, all atoms (Å ²)	110.0	wwPDB-VP

Xtriage's analysis on translational NCS is as follows: *The largest off-origin peak in the Patterson function is 5.66% of the height of the origin peak. No significant pseudotranslation is detected.*

¹Intensities estimated from amplitudes.

²Theoretical values of $\langle |L| \rangle$, $\langle L^2 \rangle$ for acentric reflections are 0.5, 0.375 respectively for untwinned datasets, and 0.333, 0.2 for perfectly twinned datasets.

5 Model quality [i](#)

5.1 Standard geometry [i](#)

Bond lengths and bond angles in the following residue types are not validated in this section: CL, P4G, NA, 42F, DMU, CLR

The Z score for a bond length (or angle) is the number of standard deviations the observed value is removed from the expected value. A bond length (or angle) with $|Z| > 5$ is considered an outlier worth inspection. RMSZ is the root-mean-square of all Z scores of the bond lengths (or angles).

Mol	Chain	Bond lengths		Bond angles	
		RMSZ	$\# Z > 5$	RMSZ	$\# Z > 5$
1	A	0.35	1/4308 (0.0%)	0.50	1/5891 (0.0%)
2	L	0.45	2/1654 (0.1%)	0.54	1/2251 (0.0%)
3	H	0.37	0/1640	0.67	3/2235 (0.1%)
All	All	0.38	3/7602 (0.0%)	0.55	5/10377 (0.0%)

Chiral center outliers are detected by calculating the chiral volume of a chiral center and verifying if the center is modelled as a planar moiety or with the opposite hand. A planarity outlier is detected by checking planarity of atoms in a peptide group, atoms in a mainchain group or atoms of a sidechain that are expected to be planar.

Mol	Chain	#Chirality outliers	#Planarity outliers
1	A	0	1
3	H	0	1
All	All	0	2

All (3) bond length outliers are listed below:

Mol	Chain	Res	Type	Atoms	Z	Observed(Å)	Ideal(Å)
2	L	96	PRO	N-CD	5.67	1.55	1.47
2	L	142	PRO	N-CD	5.56	1.55	1.47
1	A	54	PRO	N-CD	5.12	1.55	1.47

All (5) bond angle outliers are listed below:

Mol	Chain	Res	Type	Atoms	Z	Observed(°)	Ideal(°)
3	H	154	GLU	C-N-CD	-14.34	89.06	120.60
3	H	131	ALA	C-N-CD	-9.07	100.65	120.60
3	H	198	SER	N-CA-CB	-7.30	99.55	110.50
2	L	187	TYR	CB-CA-C	-6.29	97.83	110.40
1	A	53	PHE	C-N-CD	5.70	140.37	128.40

There are no chirality outliers.

All (2) planarity outliers are listed below:

Mol	Chain	Res	Type	Group
1	A	444	ARG	Peptide
3	H	98	ARG	Peptide

5.2 Too-close contacts ⓘ

In the following table, the Non-H and H(model) columns list the number of non-hydrogen atoms and hydrogen atoms in the chain respectively. The H(added) column lists the number of hydrogen atoms added and optimized by MolProbity. The Clashes column lists the number of clashes within the asymmetric unit, whereas Symm-Clashes lists symmetry related clashes.

Mol	Chain	Non-H	H(model)	H(added)	Clashes	Symm-Clashes
1	A	4167	0	4048	308	0
2	L	1616	0	1515	86	0
3	H	1602	0	1541	167	0
4	A	33	0	42	1	0
5	A	11	18	18	0	0
6	A	20	0	20	17	0
7	A	56	0	92	5	0
8	A	2	0	0	0	0
9	A	1	0	0	0	0
10	A	1	0	0	0	0
10	H	2	0	0	1	0
10	L	3	0	0	0	0
All	All	7514	18	7276	530	0

The all-atom clashscore is defined as the number of clashes found per 1000 atoms (including hydrogen atoms). The all-atom clashscore for this structure is 36.

The worst 5 of 530 close contacts within the same asymmetric unit are listed below, sorted by their clash magnitude.

Atom-1	Atom-2	Interatomic distance (Å)	Clash overlap (Å)
1:A:124:TYR:CD2	6:A:703:42F:H3	1.35	1.56
3:H:194:TRP:CD1	3:H:199:ILE:HD11	1.42	1.49
1:A:53:PHE:CD2	1:A:356:SER:HB3	1.51	1.44
1:A:124:TYR:HD2	6:A:703:42F:C15	1.29	1.42
3:H:194:TRP:CD1	3:H:199:ILE:CD1	2.05	1.38

There are no symmetry-related clashes.

5.3 Torsion angles

5.3.1 Protein backbone

In the following table, the Percentiles column shows the percent Ramachandran outliers of the chain as a percentile score with respect to all X-ray entries followed by that with respect to entries of similar resolution.

The Analysed column shows the number of residues for which the backbone conformation was analysed, and the total number of residues.

Mol	Chain	Analysed	Favoured	Allowed	Outliers	Percentiles	
1	A	530/543 (98%)	503 (95%)	27 (5%)	0	100	100
2	L	212/237 (90%)	204 (96%)	8 (4%)	0	100	100
3	H	211/240 (88%)	203 (96%)	7 (3%)	1 (0%)	34	74
All	All	953/1020 (93%)	910 (96%)	42 (4%)	1 (0%)	56	90

All (1) Ramachandran outliers are listed below:

Mol	Chain	Res	Type
3	H	132	PRO

5.3.2 Protein sidechains

In the following table, the Percentiles column shows the percent sidechain outliers of the chain as a percentile score with respect to all X-ray entries followed by that with respect to entries of similar resolution.

The Analysed column shows the number of residues for which the sidechain conformation was analysed, and the total number of residues.

Mol	Chain	Analysed	Rotameric	Outliers	Percentiles	
1	A	421/448 (94%)	403 (96%)	18 (4%)	35	74
2	L	182/207 (88%)	172 (94%)	10 (6%)	27	67
3	H	175/205 (85%)	162 (93%)	13 (7%)	17	54
All	All	778/860 (90%)	737 (95%)	41 (5%)	28	68

5 of 41 residues with a non-rotameric sidechain are listed below:

Mol	Chain	Res	Type
2	L	115	THR
2	L	161	LEU

Continued on next page...

Continued from previous page...

Mol	Chain	Res	Type
3	H	165	LEU
2	L	156	ARG
2	L	157	GLN

Some sidechains can be flipped to improve hydrogen bonding and reduce clashes. All (1) such sidechains are listed below:

Mol	Chain	Res	Type
2	L	54	ASN

5.3.3 RNA [i](#)

There are no RNA molecules in this entry.

5.4 Non-standard residues in protein, DNA, RNA chains [i](#)

There are no non-standard protein/DNA/RNA residues in this entry.

5.5 Carbohydrates [i](#)

There are no carbohydrates in this entry.

5.6 Ligand geometry [i](#)

Of 8 ligands modelled in this entry, 3 are monoatomic - leaving 5 for Mogul analysis.

In the following table, the Counts columns list the number of bonds (or angles) for which Mogul statistics could be retrieved, the number of bonds (or angles) that are observed in the model and the number of bonds (or angles) that are defined in the chemical component dictionary. The Link column lists molecule types, if any, to which the group is linked. The Z score for a bond length (or angle) is the number of standard deviations the observed value is removed from the expected value. A bond length (or angle) with $|Z| > 2$ is considered an outlier worth inspection. RMSZ is the root-mean-square of all Z scores of the bond lengths (or angles).

Mol	Type	Chain	Res	Link	Bond lengths			Bond angles		
					Counts	RMSZ	$\# Z > 2$	Counts	RMSZ	$\# Z > 2$
4	DMU	A	701	-	34,34,34	0.39	0	45,45,45	0.75	1 (2%)
5	P4G	A	702	-	10,10,10	0.69	0	9,9,9	0.23	0
6	42F	A	703	-	22,22,22	1.71	1 (4%)	27,32,32	1.34	4 (14%)
7	CLR	A	704	-	31,31,31	0.63	0	48,48,48	1.22	3 (6%)

Mol	Type	Chain	Res	Link	Bond lengths			Bond angles		
					Counts	RMSZ	# Z > 2	Counts	RMSZ	# Z > 2
7	CLR	A	705	-	31,31,31	0.66	0	48,48,48	1.07	3 (6%)

In the following table, the Chirals column lists the number of chiral outliers, the number of chiral centers analysed, the number of these observed in the model and the number defined in the chemical component dictionary. Similar counts are reported in the Torsion and Rings columns. '-' means no outliers of that kind were identified.

Mol	Type	Chain	Res	Link	Chirals	Torsions	Rings
4	DMU	A	701	-	-	0/19/59/59	0/2/2/2
5	P4G	A	702	-	-	0/8/8/8	0/0/0/0
6	42F	A	703	-	-	0/10/35/35	0/1/3/3
7	CLR	A	704	-	-	0/10/68/68	0/4/4/4
7	CLR	A	705	-	-	0/10/68/68	0/4/4/4

All (1) bond length outliers are listed below:

Mol	Chain	Res	Type	Atoms	Z	Observed(Å)	Ideal(Å)
6	A	703	42F	C8-C6	-7.54	1.40	1.51

The worst 5 of 11 bond angle outliers are listed below:

Mol	Chain	Res	Type	Atoms	Z	Observed(°)	Ideal(°)
6	A	703	42F	C7-C1-C2	-3.12	109.70	112.61
7	A	705	CLR	C11-C12-C13	-3.00	107.48	112.84
6	A	703	42F	C15-O1-C14	-2.74	109.56	115.99
7	A	704	CLR	C11-C12-C13	-2.69	108.04	112.84
4	A	701	DMU	C10-O7-C3	-2.37	111.81	118.01

There are no chirality outliers.

There are no torsion outliers.

There are no ring outliers.

4 monomers are involved in 23 short contacts:

Mol	Chain	Res	Type	Clashes	Symm-Clashes
4	A	701	DMU	1	0
6	A	703	42F	17	0
7	A	704	CLR	1	0
7	A	705	CLR	4	0

5.7 Other polymers [i](#)

There are no such residues in this entry.

5.8 Polymer linkage issues [i](#)

There are no chain breaks in this entry.

6 Fit of model and data [i](#)

6.1 Protein, DNA and RNA chains [i](#)

In the following table, the column labelled ‘#RSRZ> 2’ contains the number (and percentage) of RSRZ outliers, followed by percent RSRZ outliers for the chain as percentile scores relative to all X-ray entries and entries of similar resolution. The OWAB column contains the minimum, median, 95th percentile and maximum values of the occupancy-weighted average B-factor per residue. The column labelled ‘Q< 0.9’ lists the number of (and percentage) of residues with an average occupancy less than 0.9.

Mol	Chain	Analysed	<RSRZ>	#RSRZ>2		OWAB(Å ²)	Q<0.9
1	A	532/543 (97%)	-0.11	7 (1%)	79 72	84, 107, 135, 157	0
2	L	214/237 (90%)	0.25	18 (8%)	14 10	79, 106, 150, 189	0
3	H	215/240 (89%)	0.15	14 (6%)	22 17	81, 106, 149, 191	0
All	All	961/1020 (94%)	0.03	39 (4%)	41 32	79, 107, 144, 191	0

The worst 5 of 39 RSRZ outliers are listed below:

Mol	Chain	Res	Type	RSRZ
3	H	134	CYS	8.2
3	H	219	ARG	6.5
2	L	119	PHE	5.9
3	H	133	VAL	5.8
3	H	132	PRO	4.4

6.2 Non-standard residues in protein, DNA, RNA chains [i](#)

There are no non-standard protein/DNA/RNA residues in this entry.

6.3 Carbohydrates [i](#)

There are no carbohydrates in this entry.

6.4 Ligands [i](#)

In the following table, the Atoms column lists the number of modelled atoms in the group and the number defined in the chemical component dictionary. LLDF column lists the quality of electron density of the group with respect to its neighbouring residues in protein, DNA or RNA chains. The B-factors column lists the minimum, median, 95th percentile and maximum values of B factors

of atoms in the group. The column labelled 'Q< 0.9' lists the number of atoms with occupancy less than 0.9.

Mol	Type	Chain	Res	Atoms	RSCC	RSR	LLDF	B-factors(\AA^2)	Q<0.9
7	CLR	A	705	28/28	0.87	0.46	3.95	87,112,123,126	0
5	P4G	A	702	11/11	0.55	0.58	3.86	114,137,155,156	0
6	42F	A	703	20/20	0.74	0.48	2.97	102,121,134,307	0
8	NA	A	706	1/1	0.97	0.35	1.91	106,106,106,106	0
4	DMU	A	701	33/33	0.84	0.29	1.23	105,134,143,152	0
7	CLR	A	704	28/28	0.92	0.25	0.29	78,111,115,118	0
8	NA	A	707	1/1	0.82	0.22	-1.47	106,106,106,106	0
9	CL	A	708	1/1	0.96	0.15	-2.22	107,107,107,107	0

6.5 Other polymers [i](#)

There are no such residues in this entry.