



Full wwPDB X-ray Structure Validation Report ⓘ

Feb 19, 2016 – 08:24 PM GMT

PDB ID : 4XRG
Title : Crystal Structure of the Homospermidine Synthase (HSS) variant H296S from *Blastochloris viridis* in Complex with NAD, Putrescine and Agmatine
Authors : Krossa, S.
Deposited on : 2015-01-21
Resolution : 1.30 Å(reported)

This is a Full wwPDB X-ray Structure Validation Report for a publicly released PDB entry.
We welcome your comments at validation@mail.wwpdb.org
A user guide is available at
<http://wwpdb.org/validation/2016/XrayValidationReportHelp>
with specific help available everywhere you see the ⓘ symbol.

The following versions of software and data (see [references ⓘ](#)) were used in the production of this report:

MolProbity : 4.02b-467
Mogul : 1.7.1 (RC1), CSD as537be (2016)
Xtriage (Phenix) : 1.9-1692
EDS : rb-20026982
Percentile statistics : 20151230.v01 (using entries in the PDB archive December 30th 2015)
Refmac : 5.8.0135
CCP4 : 6.5.0
Ideal geometry (proteins) : Engh & Huber (2001)
Ideal geometry (DNA, RNA) : Parkinson et al. (1996)
Validation Pipeline (wwPDB-VP) : rb-20026982

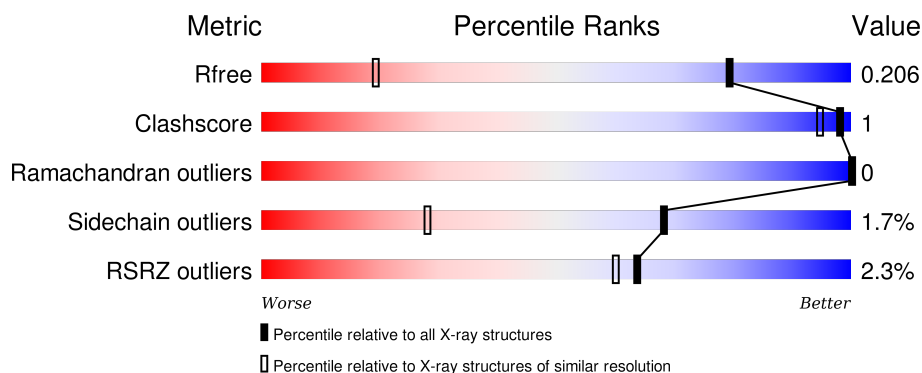
1 Overall quality at a glance

The following experimental techniques were used to determine the structure:

X-RAY DIFFRACTION

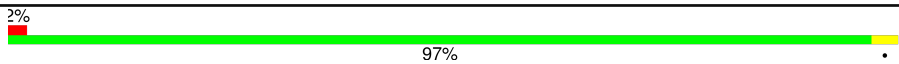
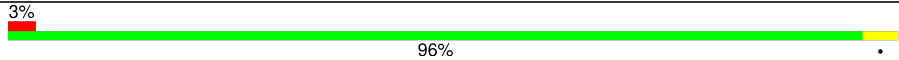
The reported resolution of this entry is 1.30 Å.

Percentile scores (ranging between 0-100) for global validation metrics of the entry are shown in the following graphic. The table shows the number of entries on which the scores are based.



Metric	Whole archive (#Entries)	Similar resolution (#Entries, resolution range(Å))
R_{free}	91344	1475 (1.34-1.26)
Clashscore	102246	1031 (1.32-1.28)
Ramachandran outliers	100387	1504 (1.34-1.26)
Sidechain outliers	100360	1503 (1.34-1.26)
RSRZ outliers	91569	1476 (1.34-1.26)

The table below summarises the geometric issues observed across the polymeric chains and their fit to the electron density. The red, orange, yellow and green segments on the lower bar indicate the fraction of residues that contain outliers for ≥ 3 , 2, 1 and 0 types of geometric quality criteria. A grey segment represents the fraction of residues that are not modelled. The numeric value for each fraction is indicated below the corresponding segment, with a dot representing fractions $\leq 5\%$. The upper red bar (where present) indicates the fraction of residues that have poor fit to the electron density. The numeric value is given above the bar.

Mol	Chain	Length	Quality of chain
1	A	474	 2% 97% .
1	B	474	 3% 96% .

The following table lists non-polymeric compounds, carbohydrate monomers and non-standard residues in protein, DNA, RNA chains that are outliers for geometric or electron-density-fit criteria:

Mol	Type	Chain	Res	Chirality	Geometry	Clashes	Electron density
5	1PS	A	504	-	-	-	X
5	1PS	A	505[B]	-	-	-	X
6	ACT	B	504	-	-	-	X
6	ACT	B	505	-	-	-	X

2 Entry composition [i](#)

There are 7 unique types of molecules in this entry. The entry contains 16326 atoms, of which 7462 are hydrogens and 0 are deuteriums.

In the tables below, the ZeroOcc column contains the number of atoms modelled with zero occupancy, the AltConf column contains the number of residues with at least one atom in alternate conformation and the Trace column contains the number of residues modelled with at most 2 atoms.

- Molecule 1 is a protein called Homospermidine synthase.

Mol	Chain	Residues	Atoms						ZeroOcc	AltConf	Trace
1	A	474	Total	C	H	N	O	S	0	10	0
			7424	2387	3656	655	708	18			
1	B	474	Total	C	H	N	O	S	0	13	0
			7444	2393	3663	655	715	18			

There are 2 discrepancies between the modelled and reference sequences:

Chain	Residue	Modelled	Actual	Comment	Reference
A	296	SER	HIS	engineered mutation	UNP O32323
B	296	SER	HIS	engineered mutation	UNP O32323

- Molecule 2 is NICOTINAMIDE-ADENINE-DINUCLEOTIDE (three-letter code: NAD) (formula: $C_{21}H_{27}N_7O_{14}P_2$).



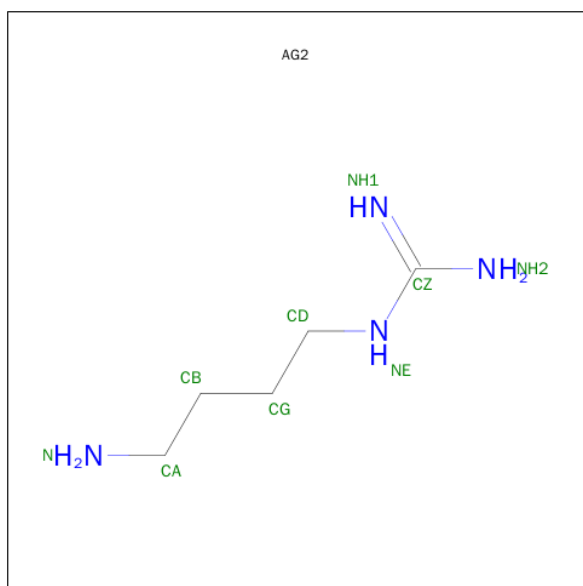
Mol	Chain	Residues	Atoms						ZeroOcc	AltConf
2	A	1	Total	C	H	N	O	P	0	0
			70	21	26	7	14	2		

Continued on next page...

Continued from previous page...

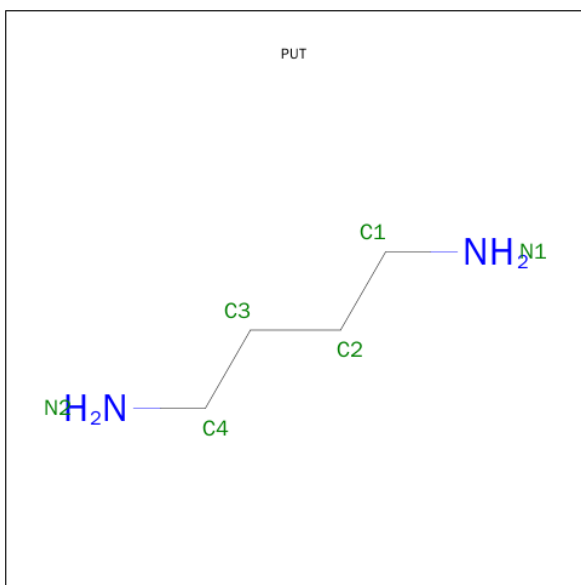
Mol	Chain	Residues	Atoms						ZeroOcc	AltConf
2	B	1	Total	C	H	N	O	P	0	0
			70	21	26	7	14	2		

- Molecule 3 is AGMATINE (three-letter code: AG2) (formula: C₅H₁₄N₄).



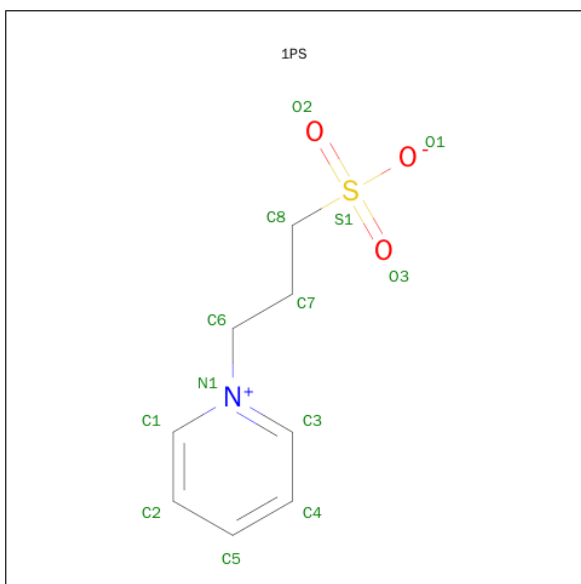
Mol	Chain	Residues	Atoms				ZeroOcc	AltConf
3	A	1	Total	C	H	N	0	1
			23	5	14	4		
3	B	1	Total	C	H	N	0	1
			23	5	14	4		

- Molecule 4 is 1,4-DIAMINOBTANE (three-letter code: PUT) (formula: C₄H₁₂N₂).



Mol	Chain	Residues	Atoms				ZeroOcc	AltConf
4	A	1	Total	C	H	N	0	1
			18	4	12	2		
4	B	1	Total	C	H	N	0	1
			18	4	12	2		

- Molecule 5 is 3-PYRIDINIUM-1-YLPROPANE-1-SULFONATE (three-letter code: 1PS) (formula: C₈H₁₁NO₃S).



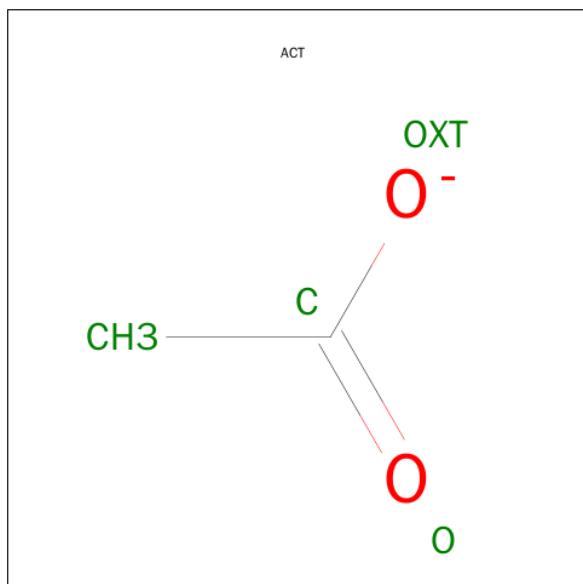
Mol	Chain	Residues	Atoms						ZeroOcc	AltConf
5	A	1	Total	C	H	N	O	S	0	0
			24	8	11	1	3	1		

Continued on next page...

Continued from previous page...

Mol	Chain	Residues	Atoms					ZeroOcc	AltConf
5	A	1	Total	C	H	N	O	S	
			48	16	22	2	6	2	
								0	1

- Molecule 6 is ACETATE ION (three-letter code: ACT) (formula: $C_2H_3O_2$).



Mol	Chain	Residues	Atoms				ZeroOcc	AltConf
6	B	1	Total	C	H	O		
			7	2	3	2	0	0
6	B	1	Total	C	H	O		
			7	2	3	2	0	0

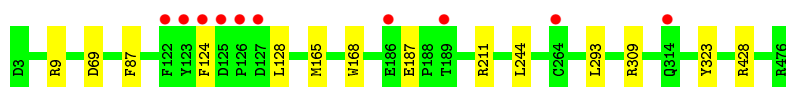
- Molecule 7 is water.

Mol	Chain	Residues	Atoms		ZeroOcc	AltConf
7	A	594	Total	O		
			594	594	0	0
7	B	556	Total	O		
			556	556	0	0

3 Residue-property plots [i](#)

These plots are drawn for all protein, RNA and DNA chains in the entry. The first graphic for a chain summarises the proportions of errors displayed in the second graphic. The second graphic shows the sequence view annotated by issues in geometry and electron density. Residues are color-coded according to the number of geometric quality criteria for which they contain at least one outlier: green = 0, yellow = 1, orange = 2 and red = 3 or more. A red dot above a residue indicates a poor fit to the electron density (RSRZ > 2). Stretches of 2 or more consecutive residues without any outlier are shown as a green connector. Residues present in the sample, but not in the model, are shown in grey.

- Molecule 1: Homospermidine synthase



- Molecule 1: Homospermidine synthase



4 Data and refinement statistics

Property	Value	Source
Space group	P 2 21 21	Depositor
Cell constants a, b, c, α , β , γ	60.03Å 110.23Å 157.47Å 90.00° 90.00° 90.00°	Depositor
Resolution (Å)	10.00 – 1.30 90.31 – 1.06	Depositor EDS
% Data completeness (in resolution range)	99.0 (10.00-1.30) 70.7 (90.31-1.06)	Depositor EDS
R_{merge}	(Not available)	Depositor
R_{sym}	0.18	Depositor
$\langle I/\sigma(I) \rangle$ ¹	1.12 (at 1.06Å)	Xtriage
Refinement program	PHENIX (phenix.refine: 1.9_1692)	Depositor
R, R_{free}	0.160 , 0.198 0.172 , 0.206	Depositor DCC
R_{free} test set	12833 reflections (6.19%)	DCC
Wilson B-factor (Å ²)	9.2	Xtriage
Anisotropy	0.090	Xtriage
Bulk solvent k_{sol} (e/Å ³), B_{sol} (Å ²)	0.44 , 54.5	EDS
Estimated twinning fraction	No twinning to report.	Xtriage
L-test for twinning ²	$\langle L \rangle = 0.47$, $\langle L^2 \rangle = 0.30$	Xtriage
Outliers	0 of 440347 reflections	Xtriage
F_o, F_c correlation	0.96	EDS
Total number of atoms	16326	wwPDB-VP
Average B, all atoms (Å ²)	24.0	wwPDB-VP

Xtriage's analysis on translational NCS is as follows: *The largest off-origin peak in the Patterson function is 4.80% of the height of the origin peak. No significant pseudotranslation is detected.*

¹Intensities estimated from amplitudes.

²Theoretical values of $\langle |L| \rangle$, $\langle L^2 \rangle$ for acentric reflections are 0.5, 0.375 respectively for untwinned datasets, and 0.333, 0.2 for perfectly twinned datasets.

5 Model quality [i](#)

5.1 Standard geometry [i](#)

Bond lengths and bond angles in the following residue types are not validated in this section: PUT, 1PS, AG2, NAD, ACT

The Z score for a bond length (or angle) is the number of standard deviations the observed value is removed from the expected value. A bond length (or angle) with $|Z| > 5$ is considered an outlier worth inspection. RMSZ is the root-mean-square of all Z scores of the bond lengths (or angles).

Mol	Chain	Bond lengths		Bond angles	
		RMSZ	# Z >5	RMSZ	# Z >5
1	A	0.47	0/3875	0.64	1/5280 (0.0%)
1	B	0.43	0/3893	0.59	0/5304
All	All	0.45	0/7768	0.61	1/10584 (0.0%)

There are no bond length outliers.

All (1) bond angle outliers are listed below:

Mol	Chain	Res	Type	Atoms	Z	Observed(°)	Ideal(°)
1	A	211	ARG	NE-CZ-NH2	-5.26	117.67	120.30

There are no chirality outliers.

There are no planarity outliers.

5.2 Too-close contacts [i](#)

In the following table, the Non-H and H(model) columns list the number of non-hydrogen atoms and hydrogen atoms in the chain respectively. The H(added) column lists the number of hydrogen atoms added and optimized by MolProbity. The Clashes column lists the number of clashes within the asymmetric unit, whereas Symm-Clashes lists symmetry related clashes.

Mol	Chain	Non-H	H(model)	H(added)	Clashes	Symm-Clashes
1	A	3768	3656	3651	3	0
1	B	3781	3663	3650	12	0
2	A	44	26	26	0	0
2	B	44	26	26	0	0
3	A	9	14	14	0	0
3	B	9	14	14	0	0
4	A	6	12	12	0	0
4	B	6	12	12	0	0

Continued on next page...

Continued from previous page...

Mol	Chain	Non-H	H(model)	H(added)	Clashes	Symm-Clashes
5	A	39	33	33	0	0
6	B	8	6	6	0	0
7	A	594	0	0	1	1
7	B	556	0	0	6	0
All	All	8864	7462	7444	15	1

The all-atom clashscore is defined as the number of clashes found per 1000 atoms (including hydrogen atoms). The all-atom clashscore for this structure is 1.

All (15) close contacts within the same asymmetric unit are listed below, sorted by their clash magnitude.

Atom-1	Atom-2	Interatomic distance (Å)	Clash overlap (Å)
1:B:426:ASP:OD1	7:B:1020:HOH:O	2.08	0.71
1:A:309[B]:ARG:NH2	7:A:1032:HOH:O	2.26	0.68
1:B:261:ASP:N	1:B:261:ASP:OD1	2.28	0.66
1:A:187:GLU:OE2	1:A:428:ARG:NH2	2.32	0.62
1:B:416:ASN:OD1	7:B:1035:HOH:O	2.17	0.58
1:B:385[B]:GLU:OE2	1:B:388:ARG:NH2	2.40	0.55
1:B:183:VAL:HG21	1:B:201:LEU:HD23	1.90	0.54
1:B:447[B]:ASP:OD1	7:B:957:HOH:O	2.19	0.52
1:B:133[A]:ARG:NH2	7:B:710:HOH:O	2.44	0.51
1:B:37:ASP:OD1	1:B:39:SER:OG	2.15	0.50
1:B:298:GLU:OE2	7:B:743:HOH:O	2.20	0.47
1:A:165:MET:HA	1:A:168:TRP:CE3	2.51	0.46
1:B:385[B]:GLU:OE1	7:B:1066:HOH:O	2.21	0.44
1:B:165:MET:HA	1:B:168:TRP:CE3	2.55	0.41
1:B:101:MET:HG3	1:B:155:ALA:HB1	2.03	0.40

All (1) symmetry-related close contacts are listed below. The label for Atom-2 includes the symmetry operator and encoded unit-cell translations to be applied.

Atom-1	Atom-2	Interatomic distance (Å)	Clash overlap (Å)
7:A:603:HOH:O	7:A:625:HOH:O[3_555]	2.17	0.03

5.3 Torsion angles

5.3.1 Protein backbone

In the following table, the Percentiles column shows the percent Ramachandran outliers of the chain as a percentile score with respect to all X-ray entries followed by that with respect to entries of similar resolution.

The Analysed column shows the number of residues for which the backbone conformation was analysed, and the total number of residues.

Mol	Chain	Analysed	Favoured	Allowed	Outliers	Percentiles	
1	A	481/474 (102%)	466 (97%)	15 (3%)	0	100	100
1	B	485/474 (102%)	469 (97%)	16 (3%)	0	100	100
All	All	966/948 (102%)	935 (97%)	31 (3%)	0	100	100

There are no Ramachandran outliers to report.

5.3.2 Protein sidechains

In the following table, the Percentiles column shows the percent sidechain outliers of the chain as a percentile score with respect to all X-ray entries followed by that with respect to entries of similar resolution.

The Analysed column shows the number of residues for which the sidechain conformation was analysed, and the total number of residues.

Mol	Chain	Analysed	Rotameric	Outliers	Percentiles	
1	A	398/388 (103%)	390 (98%)	8 (2%)	63	20
1	B	401/388 (103%)	396 (99%)	5 (1%)	78	43
All	All	799/776 (103%)	786 (98%)	13 (2%)	68	30

All (13) residues with a non-rotameric sidechain are listed below:

Mol	Chain	Res	Type
1	A	9	ARG
1	A	69	ASP
1	A	87	PHE
1	A	124	PHE
1	A	128	LEU
1	A	244	LEU
1	A	293	LEU
1	A	323	TYR

Continued on next page...

Continued from previous page...

Mol	Chain	Res	Type
1	B	41	LEU
1	B	87	PHE
1	B	261	ASP
1	B	293	LEU
1	B	323	TYR

Some sidechains can be flipped to improve hydrogen bonding and reduce clashes. There are no such sidechains identified.

5.3.3 RNA [i](#)

There are no RNA molecules in this entry.

5.4 Non-standard residues in protein, DNA, RNA chains [i](#)

There are no non-standard protein/DNA/RNA residues in this entry.

5.5 Carbohydrates [i](#)

There are no carbohydrates in this entry.

5.6 Ligand geometry [i](#)

11 ligands are modelled in this entry.

In the following table, the Counts columns list the number of bonds (or angles) for which Mogul statistics could be retrieved, the number of bonds (or angles) that are observed in the model and the number of bonds (or angles) that are defined in the chemical component dictionary. The Link column lists molecule types, if any, to which the group is linked. The Z score for a bond length (or angle) is the number of standard deviations the observed value is removed from the expected value. A bond length (or angle) with $|Z| > 2$ is considered an outlier worth inspection. RMSZ is the root-mean-square of all Z scores of the bond lengths (or angles).

Mol	Type	Chain	Res	Link	Bond lengths			Bond angles		
					Counts	RMSZ	$\# Z > 2$	Counts	RMSZ	$\# Z > 2$
2	NAD	A	501	-	42,48,48	0.77	1 (2%)	46,73,73	1.90	6 (13%)
3	AG2	A	502[A]	-	7,8,8	1.01	1 (14%)	8,8,8	0.84	0
4	PUT	A	503[B]	-	5,5,5	0.22	0	4,4,4	0.67	0
5	1PS	A	504	-	13,13,13	1.81	1 (7%)	16,17,17	0.83	0
5	1PS	A	505[A]	-	13,13,13	1.88	1 (7%)	16,17,17	1.14	2 (12%)

Mol	Type	Chain	Res	Link	Bond lengths			Bond angles		
					Counts	RMSZ	# Z > 2	Counts	RMSZ	# Z > 2
5	1PS	A	505[B]	-	13,13,13	1.67	1 (7%)	16,17,17	1.29	2 (12%)
2	NAD	B	501	-	42,48,48	0.77	1 (2%)	46,73,73	1.75	7 (15%)
3	AG2	B	502[A]	-	7,8,8	0.97	1 (14%)	8,8,8	0.95	0
4	PUT	B	503[B]	-	5,5,5	0.22	0	4,4,4	0.69	0
6	ACT	B	504	-	0,3,3	0.00	-	0,3,3	0.00	-
6	ACT	B	505	-	0,3,3	0.00	-	0,3,3	0.00	-

In the following table, the Chirals column lists the number of chiral outliers, the number of chiral centers analysed, the number of these observed in the model and the number defined in the chemical component dictionary. Similar counts are reported in the Torsion and Rings columns. '-' means no outliers of that kind were identified.

Mol	Type	Chain	Res	Link	Chirals	Torsions	Rings
2	NAD	A	501	-	-	0/22/62/62	0/5/5/5
3	AG2	A	502[A]	-	-	0/6/6/6	0/0/0/0
4	PUT	A	503[B]	-	-	0/3/3/3	0/0/0/0
5	1PS	A	504	-	-	0/7/7/7	0/1/1/1
5	1PS	A	505[A]	-	-	0/7/7/7	0/1/1/1
5	1PS	A	505[B]	-	-	0/7/7/7	0/1/1/1
2	NAD	B	501	-	-	0/22/62/62	0/5/5/5
3	AG2	B	502[A]	-	-	0/6/6/6	0/0/0/0
4	PUT	B	503[B]	-	-	0/3/3/3	0/0/0/0
6	ACT	B	504	-	-	0/0/0/0	0/0/0/0
6	ACT	B	505	-	-	0/0/0/0	0/0/0/0

All (7) bond length outliers are listed below:

Mol	Chain	Res	Type	Atoms	Z	Observed(Å)	Ideal(Å)
5	A	505[A]	1PS	C8-S1	-6.35	1.66	1.78
5	A	505[B]	1PS	C8-S1	-5.74	1.67	1.78
5	A	504	1PS	C8-S1	-5.73	1.67	1.78
2	A	501	NAD	C5A-C4A	2.07	1.45	1.40
3	B	502[A]	AG2	CZ-NH1	2.12	1.41	1.32
3	A	502[A]	AG2	CZ-NH1	2.19	1.41	1.32
2	B	501	NAD	C5A-C4A	2.31	1.45	1.40

All (17) bond angle outliers are listed below:

Mol	Chain	Res	Type	Atoms	Z	Observed(°)	Ideal(°)
2	A	501	NAD	N3A-C2A-N1A	-8.44	122.24	128.87
2	B	501	NAD	N3A-C2A-N1A	-7.32	123.12	128.87

Continued on next page...

Continued from previous page...

Mol	Chain	Res	Type	Atoms	Z	Observed(°)	Ideal(°)
2	A	501	NAD	C1B-N9A-C4A	-4.76	121.49	126.81
2	B	501	NAD	C1B-N9A-C4A	-4.08	122.25	126.81
2	A	501	NAD	C4B-O4B-C1B	-3.45	105.99	109.64
5	A	505[A]	1PS	C7-C8-S1	-2.77	108.58	113.16
2	B	501	NAD	C4B-O4B-C1B	-2.64	106.84	109.64
5	A	505[B]	1PS	C7-C8-S1	-2.42	109.15	113.16
2	A	501	NAD	O7N-C7N-N7N	-2.29	119.32	122.58
2	B	501	NAD	O7N-C7N-N7N	-2.11	119.57	122.58
5	A	505[A]	1PS	O3-S1-O2	-2.08	108.26	112.51
2	B	501	NAD	C4D-O4D-C1D	2.02	111.79	109.64
5	A	505[B]	1PS	O3-S1-C8	2.47	112.41	106.45
2	A	501	NAD	C3N-C7N-N7N	3.07	121.29	117.82
2	A	501	NAD	N6A-C6A-N1A	3.10	123.71	118.52
2	B	501	NAD	N6A-C6A-N1A	3.44	124.28	118.52
2	B	501	NAD	C3N-C7N-N7N	3.65	121.95	117.82

There are no chirality outliers.

There are no torsion outliers.

There are no ring outliers.

No monomer is involved in short contacts.

5.7 Other polymers ⓘ

There are no such residues in this entry.

5.8 Polymer linkage issues ⓘ

There are no chain breaks in this entry.

6 Fit of model and data

6.1 Protein, DNA and RNA chains

In the following table, the column labelled ‘#RSRZ> 2’ contains the number (and percentage) of RSRZ outliers, followed by percent RSRZ outliers for the chain as percentile scores relative to all X-ray entries and entries of similar resolution. The OWAB column contains the minimum, median, 95th percentile and maximum values of the occupancy-weighted average B-factor per residue. The column labelled ‘Q< 0.9’ lists the number of (and percentage) of residues with an average occupancy less than 0.9.

Mol	Chain	Analysed	<RSRZ>	#RSRZ>2	OWAB(Å ²)	Q<0.9
1	A	474/474 (100%)	-0.34	10 (2%) 67 63	11, 17, 34, 60	0
1	B	474/474 (100%)	-0.26	12 (2%) 61 57	12, 21, 39, 60	0
All	All	948/948 (100%)	-0.30	22 (2%) 64 60	11, 19, 37, 60	0

All (22) RSRZ outliers are listed below:

Mol	Chain	Res	Type	RSRZ
1	B	124	PHE	8.2
1	A	124	PHE	7.7
1	A	126	PRO	6.3
1	B	126	PRO	5.8
1	B	123	TYR	5.0
1	B	127	ASP	4.3
1	B	122	PHE	4.3
1	A	123	TYR	3.9
1	A	122	PHE	3.5
1	A	127	ASP	3.1
1	B	261	ASP	2.9
1	B	128	LEU	2.9
1	A	186	GLU	2.7
1	B	121	GLY	2.7
1	B	311	ALA	2.6
1	A	189	THR	2.6
1	A	314	GLN	2.4
1	A	264	CYS	2.2
1	B	125	ASP	2.2
1	B	84	GLY	2.2
1	B	3	ASP	2.1
1	A	125	ASP	2.1

6.2 Non-standard residues in protein, DNA, RNA chains [i](#)

There are no non-standard protein/DNA/RNA residues in this entry.

6.3 Carbohydrates [i](#)

There are no carbohydrates in this entry.

6.4 Ligands [i](#)

In the following table, the Atoms column lists the number of modelled atoms in the group and the number defined in the chemical component dictionary. LLDF column lists the quality of electron density of the group with respect to its neighbouring residues in protein, DNA or RNA chains. The B-factors column lists the minimum, median, 95th percentile and maximum values of B factors of atoms in the group. The column labelled 'Q< 0.9' lists the number of atoms with occupancy less than 0.9.

Mol	Type	Chain	Res	Atoms	RSCC	RSR	LLDF	B-factors(Å ²)	Q<0.9
6	ACT	B	505	4/4	0.82	0.28	14.48	34,39,46,46	0
6	ACT	B	504	4/4	0.67	0.27	8.56	37,43,52,52	0
5	1PS	A	505[B]	13/13	0.81	0.24	5.41	32,35,42,42	24
5	1PS	A	504	13/13	0.90	0.14	2.34	37,42,51,52	0
5	1PS	A	505[A]	13/13	0.81	0.24	2.00	32,39,43,46	24
3	AG2	A	502[A]	9/9	0.94	0.09	1.91	19,24,27,29	23
4	PUT	A	503[B]	6/6	0.97	0.07	0.87	11,21,28,28	18
3	AG2	B	502[A]	9/9	0.95	0.10	0.59	18,25,30,31	23
2	NAD	A	501	44/44	0.97	0.06	0.39	11,16,20,25	0
4	PUT	B	503[B]	6/6	0.96	0.08	0.07	21,26,30,30	18
2	NAD	B	501	44/44	0.97	0.06	-0.12	14,18,23,28	0

6.5 Other polymers [i](#)

There are no such residues in this entry.