



Full wwPDB X-ray Structure Validation Report ⓘ

Feb 19, 2016 – 08:14 PM GMT

PDB ID : 4XSD
Title : Complex structure of thymidylate synthase from varicella zoster virus with a dUMP
Authors : Hew, K.
Deposited on : 2015-01-22
Resolution : 2.90 Å(reported)

This is a Full wwPDB X-ray Structure Validation Report for a publicly released PDB entry.
We welcome your comments at validation@mail.wwpdb.org
A user guide is available at
<http://wwpdb.org/validation/2016/XrayValidationReportHelp>
with specific help available everywhere you see the ⓘ symbol.

The following versions of software and data (see [references ⓘ](#)) were used in the production of this report:

MolProbity : 4.02b-467
Mogul : 1.7.1 (RC1), CSD as537be (2016)
Xtriage (Phenix) : 1.9-1692
EDS : rb-20026982
Percentile statistics : 20151230.v01 (using entries in the PDB archive December 30th 2015)
Refmac : 5.8.0135
CCP4 : 6.5.0
Ideal geometry (proteins) : Engh & Huber (2001)
Ideal geometry (DNA, RNA) : Parkinson et al. (1996)
Validation Pipeline (wwPDB-VP) : rb-20026982

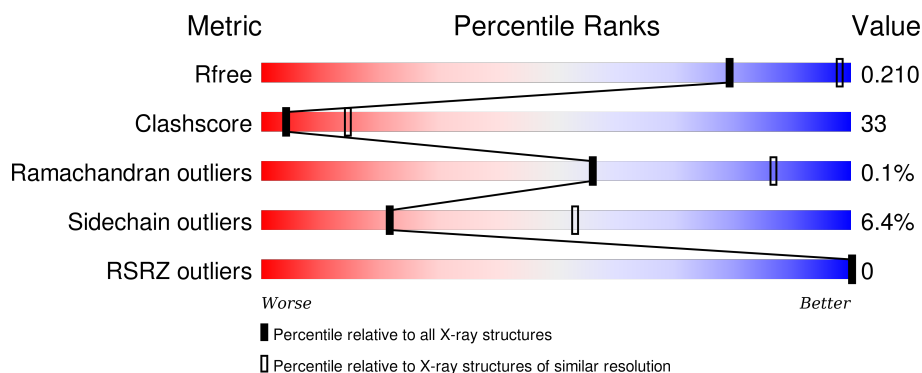
1 Overall quality at a glance

The following experimental techniques were used to determine the structure:

X-RAY DIFFRACTION


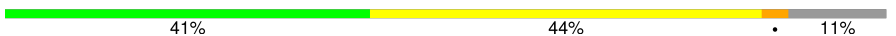


The reported resolution of this entry is 2.90 Å.

Percentile scores (ranging between 0-100) for global validation metrics of the entry are shown in the following graphic. The table shows the number of entries on which the scores are based.



Metric	Whole archive (#Entries)	Similar resolution (#Entries, resolution range(Å))
R_{free}	91344	1451 (2.90-2.90)
Clashscore	102246	1668 (2.90-2.90)
Ramachandran outliers	100387	1630 (2.90-2.90)
Sidechain outliers	100360	1632 (2.90-2.90)
RSRZ outliers	91569	1456 (2.90-2.90)

The table below summarises the geometric issues observed across the polymeric chains and their fit to the electron density. The red, orange, yellow and green segments on the lower bar indicate the fraction of residues that contain outliers for ≥ 3 , 2, 1 and 0 types of geometric quality criteria. A grey segment represents the fraction of residues that are not modelled. The numeric value for each fraction is indicated below the corresponding segment, with a dot representing fractions $\leq 5\%$. The upper red bar (where present) indicates the fraction of residues that have poor fit to the electron density. The numeric value is given above the bar.

Mol	Chain	Length	Quality of chain
1	A	311	
1	B	311	
1	C	311	
1	D	311	

The following table lists non-polymeric compounds, carbohydrate monomers and non-standard

residues in protein, DNA, RNA chains that are outliers for geometric or electron-density-fit criteria:

Mol	Type	Chain	Res	Chirality	Geometry	Clashes	Electron density
2	UMP	A	1001	-	-	X	-
2	UMP	C	1001	-	-	X	-
2	UMP	D	1001	-	-	X	-

2 Entry composition

There are 3 unique types of molecules in this entry. The entry contains 8850 atoms, of which 0 are hydrogens and 0 are deuteriums.

In the tables below, the ZeroOcc column contains the number of atoms modelled with zero occupancy, the AltConf column contains the number of residues with at least one atom in alternate conformation and the Trace column contains the number of residues modelled with at most 2 atoms.

- Molecule 1 is a protein called Thymidylate synthase.

Mol	Chain	Residues	Atoms					ZeroOcc	AltConf	Trace
1	A	262	Total	C	N	O	S	0	0	0
			2120	1365	367	378	10			
1	B	277	Total	C	N	O	S	0	0	0
			2247	1448	392	398	9			
1	C	262	Total	C	N	O	S	0	0	0
			2124	1367	367	380	10			
1	D	280	Total	C	N	O	S	0	0	0
			2270	1460	396	404	10			

There are 92 discrepancies between the modelled and reference sequences:

Chain	Residue	Modelled	Actual	Comment	Reference
A	-15	MET	-	initiating methionine	UNP Q4JQW2
A	-14	HIS	-	expression tag	UNP Q4JQW2
A	-13	HIS	-	expression tag	UNP Q4JQW2
A	-12	HIS	-	expression tag	UNP Q4JQW2
A	-11	HIS	-	expression tag	UNP Q4JQW2
A	-10	HIS	-	expression tag	UNP Q4JQW2
A	-9	HIS	-	expression tag	UNP Q4JQW2
A	-8	SER	-	expression tag	UNP Q4JQW2
A	-7	SER	-	expression tag	UNP Q4JQW2
A	-6	GLY	-	expression tag	UNP Q4JQW2
A	-5	VAL	-	expression tag	UNP Q4JQW2
A	-4	ASP	-	expression tag	UNP Q4JQW2
A	-3	LEU	-	expression tag	UNP Q4JQW2
A	-2	GLY	-	expression tag	UNP Q4JQW2
A	-1	THR	-	expression tag	UNP Q4JQW2
A	0	GLU	-	expression tag	UNP Q4JQW2
A	1	ASN	-	expression tag	UNP Q4JQW2
A	2	LEU	-	expression tag	UNP Q4JQW2
A	3	TYR	-	expression tag	UNP Q4JQW2
A	4	PHE	-	expression tag	UNP Q4JQW2
A	5	GLN	-	expression tag	UNP Q4JQW2

Continued on next page...

Continued from previous page...

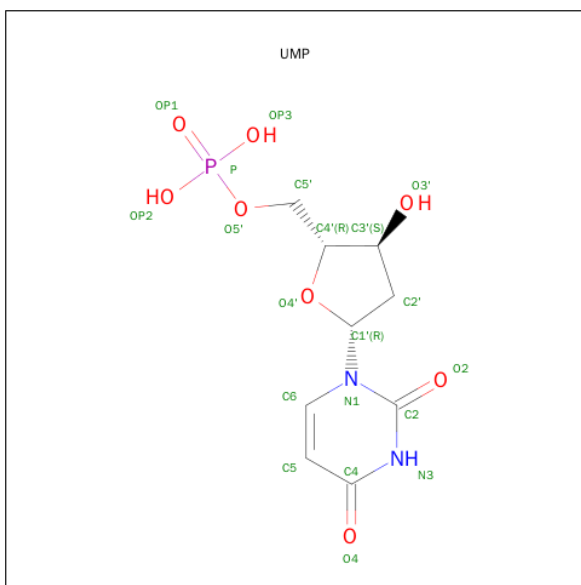
Chain	Residue	Modelled	Actual	Comment	Reference
A	6	SER	-	expression tag	UNP Q4JQW2
A	7	MET	-	expression tag	UNP Q4JQW2
B	-15	MET	-	initiating methionine	UNP Q4JQW2
B	-14	HIS	-	expression tag	UNP Q4JQW2
B	-13	HIS	-	expression tag	UNP Q4JQW2
B	-12	HIS	-	expression tag	UNP Q4JQW2
B	-11	HIS	-	expression tag	UNP Q4JQW2
B	-10	HIS	-	expression tag	UNP Q4JQW2
B	-9	HIS	-	expression tag	UNP Q4JQW2
B	-8	SER	-	expression tag	UNP Q4JQW2
B	-7	SER	-	expression tag	UNP Q4JQW2
B	-6	GLY	-	expression tag	UNP Q4JQW2
B	-5	VAL	-	expression tag	UNP Q4JQW2
B	-4	ASP	-	expression tag	UNP Q4JQW2
B	-3	LEU	-	expression tag	UNP Q4JQW2
B	-2	GLY	-	expression tag	UNP Q4JQW2
B	-1	THR	-	expression tag	UNP Q4JQW2
B	0	GLU	-	expression tag	UNP Q4JQW2
B	1	ASN	-	expression tag	UNP Q4JQW2
B	2	LEU	-	expression tag	UNP Q4JQW2
B	3	TYR	-	expression tag	UNP Q4JQW2
B	4	PHE	-	expression tag	UNP Q4JQW2
B	5	GLN	-	expression tag	UNP Q4JQW2
B	6	SER	-	expression tag	UNP Q4JQW2
B	7	MET	-	expression tag	UNP Q4JQW2
C	-15	MET	-	initiating methionine	UNP Q4JQW2
C	-14	HIS	-	expression tag	UNP Q4JQW2
C	-13	HIS	-	expression tag	UNP Q4JQW2
C	-12	HIS	-	expression tag	UNP Q4JQW2
C	-11	HIS	-	expression tag	UNP Q4JQW2
C	-10	HIS	-	expression tag	UNP Q4JQW2
C	-9	HIS	-	expression tag	UNP Q4JQW2
C	-8	SER	-	expression tag	UNP Q4JQW2
C	-7	SER	-	expression tag	UNP Q4JQW2
C	-6	GLY	-	expression tag	UNP Q4JQW2
C	-5	VAL	-	expression tag	UNP Q4JQW2
C	-4	ASP	-	expression tag	UNP Q4JQW2
C	-3	LEU	-	expression tag	UNP Q4JQW2
C	-2	GLY	-	expression tag	UNP Q4JQW2
C	-1	THR	-	expression tag	UNP Q4JQW2
C	0	GLU	-	expression tag	UNP Q4JQW2
C	1	ASN	-	expression tag	UNP Q4JQW2

Continued on next page...

Continued from previous page...

Chain	Residue	Modelled	Actual	Comment	Reference
C	2	LEU	-	expression tag	UNP Q4JQW2
C	3	TYR	-	expression tag	UNP Q4JQW2
C	4	PHE	-	expression tag	UNP Q4JQW2
C	5	GLN	-	expression tag	UNP Q4JQW2
C	6	SER	-	expression tag	UNP Q4JQW2
C	7	MET	-	expression tag	UNP Q4JQW2
D	-15	MET	-	initiating methionine	UNP Q4JQW2
D	-14	HIS	-	expression tag	UNP Q4JQW2
D	-13	HIS	-	expression tag	UNP Q4JQW2
D	-12	HIS	-	expression tag	UNP Q4JQW2
D	-11	HIS	-	expression tag	UNP Q4JQW2
D	-10	HIS	-	expression tag	UNP Q4JQW2
D	-9	HIS	-	expression tag	UNP Q4JQW2
D	-8	SER	-	expression tag	UNP Q4JQW2
D	-7	SER	-	expression tag	UNP Q4JQW2
D	-6	GLY	-	expression tag	UNP Q4JQW2
D	-5	VAL	-	expression tag	UNP Q4JQW2
D	-4	ASP	-	expression tag	UNP Q4JQW2
D	-3	LEU	-	expression tag	UNP Q4JQW2
D	-2	GLY	-	expression tag	UNP Q4JQW2
D	-1	THR	-	expression tag	UNP Q4JQW2
D	0	GLU	-	expression tag	UNP Q4JQW2
D	1	ASN	-	expression tag	UNP Q4JQW2
D	2	LEU	-	expression tag	UNP Q4JQW2
D	3	TYR	-	expression tag	UNP Q4JQW2
D	4	PHE	-	expression tag	UNP Q4JQW2
D	5	GLN	-	expression tag	UNP Q4JQW2
D	6	SER	-	expression tag	UNP Q4JQW2
D	7	MET	-	expression tag	UNP Q4JQW2

- Molecule 2 is 2'-DEOXYURIDINE 5'-MONOPHOSPHATE (three-letter code: UMP) (formula: $C_9H_{13}N_2O_8P$).



Mol	Chain	Residues	Atoms					ZeroOcc	AltConf
2	A	1	Total	C	N	O	P	0	0
			20	9	2	8	1		
2	B	1	Total	C	N	O	P	0	0
			20	9	2	8	1		
2	C	1	Total	C	N	O	P	0	0
			20	9	2	8	1		
2	D	1	Total	C	N	O	P	0	0
			20	9	2	8	1		

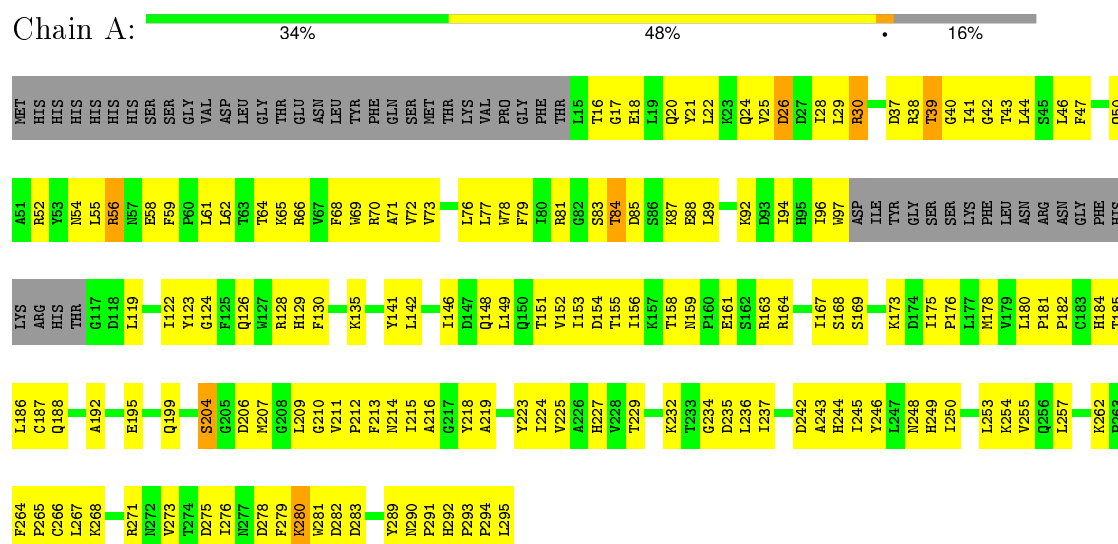
- Molecule 3 is water.

Mol	Chain	Residues	Atoms		ZeroOcc	AltConf
3	A	2	Total	O	0	0
			2	2		
3	B	4	Total	O	0	0
			4	4		
3	C	2	Total	O	0	0
			2	2		
3	D	1	Total	O	0	0
			1	1		

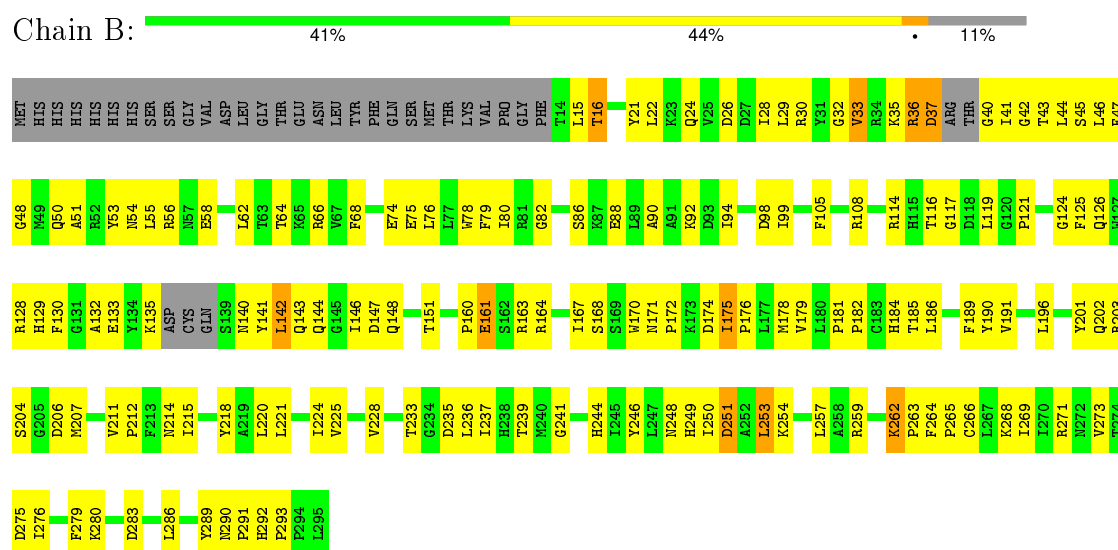
3 Residue-property plots

These plots are drawn for all protein, RNA and DNA chains in the entry. The first graphic for a chain summarises the proportions of errors displayed in the second graphic. The second graphic shows the sequence view annotated by issues in geometry and electron density. Residues are color-coded according to the number of geometric quality criteria for which they contain at least one outlier: green = 0, yellow = 1, orange = 2 and red = 3 or more. A red dot above a residue indicates a poor fit to the electron density ($RSRZ > 2$). Stretches of 2 or more consecutive residues without any outlier are shown as a green connector. Residues present in the sample, but not in the model, are shown in grey.

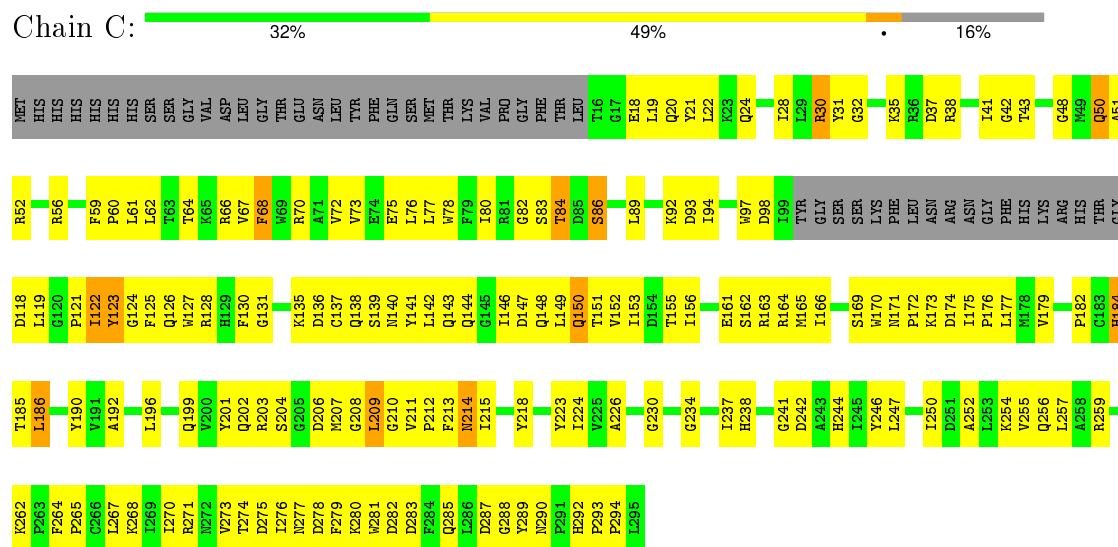
• Molecule 1: Thymidylate synthase



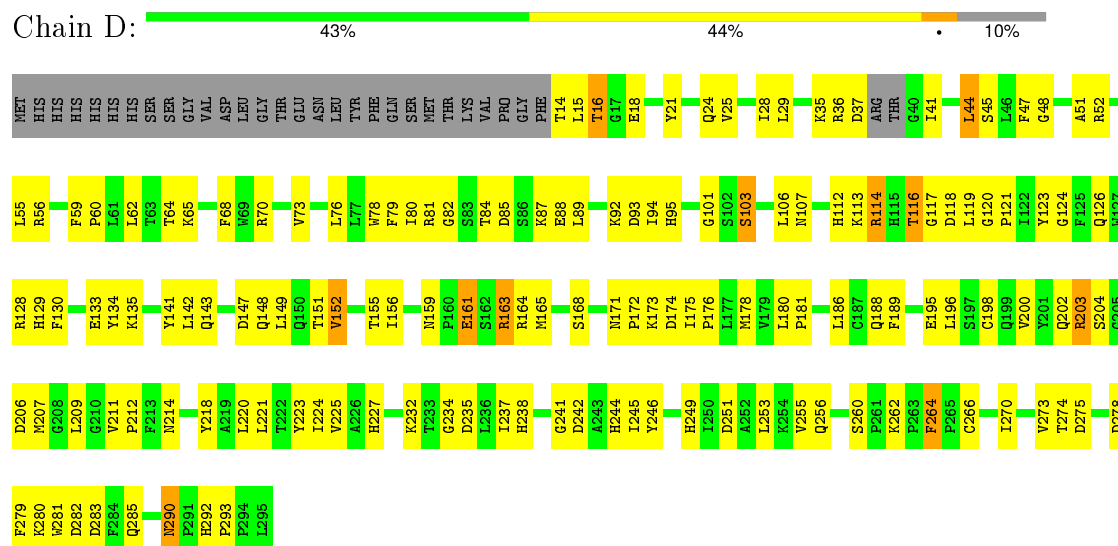
• Molecule 1: Thymidylate synthase



• Molecule 1: Thymidylate synthase



• Molecule 1: Thymidylate synthase



4 Data and refinement statistics

Property	Value	Source
Space group	P 32	Depositor
Cell constants a, b, c, α , β , γ	150.17Å 150.17Å 89.16Å 90.00° 90.00° 120.00°	Depositor
Resolution (Å)	29.84 – 2.90 29.84 – 2.90	Depositor EDS
% Data completeness (in resolution range)	96.8 (29.84-2.90) 96.7 (29.84-2.90)	Depositor EDS
R_{merge}	0.07	Depositor
R_{sym}	(Not available)	Depositor
$\langle I/\sigma(I) \rangle$ ¹	2.54 (at 2.90Å)	Xtriage
Refinement program	PHENIX (phenix.refine: 1.9_1692)	Depositor
R, R_{free}	0.240 , 0.280 0.181 , 0.210	Depositor DCC
R_{free} test set	2342 reflections (5.11%)	DCC
Wilson B-factor (Å ²)	48.6	Xtriage
Anisotropy	0.455	Xtriage
Bulk solvent k_{sol} (e/Å ³), B_{sol} (Å ²)	0.32 , 23.4	EDS
Estimated twinning fraction	0.457 for -h,-k,l 0.138 for h,-h-k,-l 0.138 for -k,-h,-l	Xtriage
L-test for twinning ²	$\langle L \rangle = 0.38$, $\langle L^2 \rangle = 0.20$	Xtriage
Outliers	0 of 48187 reflections	Xtriage
F_o, F_c correlation	0.92	EDS
Total number of atoms	8850	wwPDB-VP
Average B, all atoms (Å ²)	47.0	wwPDB-VP

Xtriage's analysis on translational NCS is as follows: *The largest off-origin peak in the Patterson function is 3.01% of the height of the origin peak. No significant pseudotranslation is detected.*

¹ Intensities estimated from amplitudes.

² Theoretical values of $\langle |L| \rangle$, $\langle L^2 \rangle$ for acentric reflections are 0.5, 0.375 respectively for untwinned datasets, and 0.333, 0.2 for perfectly twinned datasets.

5 Model quality [i](#)

5.1 Standard geometry [i](#)

Bond lengths and bond angles in the following residue types are not validated in this section: UMP

The Z score for a bond length (or angle) is the number of standard deviations the observed value is removed from the expected value. A bond length (or angle) with $|Z| > 5$ is considered an outlier worth inspection. RMSZ is the root-mean-square of all Z scores of the bond lengths (or angles).

Mol	Chain	Bond lengths		Bond angles	
		RMSZ	$\# Z > 5$	RMSZ	$\# Z > 5$
1	A	0.28	0/2175	0.47	0/2953
1	B	0.28	0/2306	0.48	0/3126
1	C	0.29	0/2179	0.48	0/2959
1	D	0.28	0/2330	0.48	0/3160
All	All	0.28	0/8990	0.48	0/12198

There are no bond length outliers.

There are no bond angle outliers.

There are no chirality outliers.

There are no planarity outliers.

5.2 Too-close contacts [i](#)

In the following table, the Non-H and H(model) columns list the number of non-hydrogen atoms and hydrogen atoms in the chain respectively. The H(added) column lists the number of hydrogen atoms added and optimized by MolProbity. The Clashes column lists the number of clashes within the asymmetric unit, whereas Symm-Clashes lists symmetry related clashes.

Mol	Chain	Non-H	H(model)	H(added)	Clashes	Symm-Clashes
1	A	2120	0	2106	162	0
1	B	2247	0	2229	158	0
1	C	2124	0	2107	170	0
1	D	2270	0	2247	141	0
2	A	20	0	11	7	0
2	B	20	0	11	5	0
2	C	20	0	11	10	0
2	D	20	0	11	7	0
3	A	2	0	0	0	0

Continued on next page...

Continued from previous page...

Mol	Chain	Non-H	H(model)	H(added)	Clashes	Symm-Clashes
3	B	4	0	0	0	0
3	C	2	0	0	0	0
3	D	1	0	0	0	0
All	All	8850	0	8733	588	0

The all-atom clashscore is defined as the number of clashes found per 1000 atoms (including hydrogen atoms). The all-atom clashscore for this structure is 33.

All (588) close contacts within the same asymmetric unit are listed below, sorted by their clash magnitude.

Atom-1	Atom-2	Interatomic distance (Å)	Clash overlap (Å)
1:D:62:LEU:HD12	1:D:212:PRO:HB3	1.41	1.03
1:A:62:LEU:HD22	1:A:212:PRO:HB3	1.44	0.98
1:A:192:ALA:HB1	1:B:33:VAL:HG11	1.46	0.94
1:B:142:LEU:HD12	1:B:143:GLN:HG3	1.52	0.91
1:B:43:THR:HG22	1:B:246:TYR:HA	1.53	0.90
1:D:292:HIS:HB3	1:D:293:PRO:HD2	1.53	0.90
1:B:271:ARG:HH22	1:B:280:LYS:HD2	1.38	0.86
1:C:163:ARG:HD3	1:D:204:SER:HB2	1.57	0.86
1:C:275:ASP:HB3	1:C:278:ASP:HB2	1.59	0.84
1:A:28:ILE:HG12	1:A:46:LEU:HD12	1.57	0.83
1:C:214:ASN:ND2	2:C:1001:UMP:O4	2.09	0.83
1:A:211:VAL:HG22	1:A:212:PRO:HD3	1.60	0.83
1:D:28:ILE:HD12	1:D:207:MET:HG3	1.63	0.81
1:D:214:ASN:ND2	2:D:1001:UMP:O4	2.13	0.80
1:D:65:LYS:HE2	1:D:209:LEU:HD21	1.64	0.79
1:B:121:PRO:O	1:B:178:MET:HG2	1.85	0.77
1:C:135:LYS:HG3	1:C:136:ASP:H	1.50	0.77
1:C:164:ARG:NE	2:D:1001:UMP:OP1	2.18	0.77
1:A:135:LYS:N	1:A:141:TYR:OH	2.14	0.77
1:A:16:THR:O	1:A:20:GLN:NE2	2.19	0.76
1:A:204:SER:HB2	1:B:163:ARG:HD3	1.68	0.76
1:B:114:ARG:NH2	1:B:119:LEU:O	2.20	0.75
1:A:22:LEU:HD22	1:A:257:LEU:HD22	1.69	0.75
2:A:1001:UMP:OP2	1:B:163:ARG:NH1	2.19	0.74
1:A:55:LEU:HD11	1:A:236:LEU:HB2	1.70	0.73
1:A:126:GLN:O	1:A:148:GLN:NE2	2.20	0.73
1:D:128:ARG:HH11	1:D:149:LEU:HB3	1.53	0.72
1:C:52:ARG:NH2	1:D:47:PHE:O	2.22	0.72
1:A:214:ASN:ND2	2:A:1001:UMP:O4	2.23	0.72
1:C:204:SER:HB2	1:D:163:ARG:HG2	1.72	0.72

Continued on next page...

Continued from previous page...

Atom-1	Atom-2	Interatomic distance (Å)	Clash overlap (Å)
1:A:84:THR:HB	1:A:122:ILE:HG13	1.70	0.72
1:D:114:ARG:HG2	1:D:118:ASP:HB3	1.71	0.72
1:B:140:ASN:HD21	1:B:142:LEU:HD23	1.54	0.72
1:C:21:TYR:OH	1:C:207:MET:O	2.08	0.72
1:C:24:GLN:O	1:C:28:ILE:HG13	1.89	0.71
1:A:164:ARG:NH1	2:B:1001:UMP:OP2	2.24	0.71
1:D:151:THR:O	1:D:155:THR:HG23	1.91	0.71
1:D:21:TYR:OH	1:D:207:MET:O	2.09	0.71
1:B:251:ASP:HA	1:B:254:LYS:HE2	1.71	0.70
1:A:210:GLY:O	1:A:214:ASN:ND2	2.24	0.70
1:A:128:ARG:HH11	1:A:149:LEU:HD23	1.56	0.70
1:C:149:LEU:O	1:C:153:ILE:HG13	1.92	0.70
1:A:219:ALA:HB2	1:A:236:LEU:HD22	1.73	0.69
1:A:85:ASP:OD2	1:A:87:LYS:N	2.25	0.69
1:D:81:ARG:NH1	1:D:88:GLU:OE1	2.25	0.69
1:A:289:TYR:CE1	1:A:291:PRO:HG3	2.28	0.69
1:C:262:LYS:HE3	1:C:292:HIS:CD2	2.28	0.68
1:D:203:ARG:NH2	2:D:1001:UMP:OP1	2.26	0.68
1:B:211:VAL:HB	1:B:212:PRO:HD3	1.76	0.68
1:B:271:ARG:NH2	1:B:280:LYS:HD2	2.07	0.68
1:C:163:ARG:O	1:D:203:ARG:HG3	1.93	0.68
1:C:247:LEU:HA	1:C:250:ILE:HG13	1.75	0.68
1:A:273:VAL:HG11	1:A:278:ASP:HB3	1.76	0.68
1:B:54:ASN:OD1	1:B:56:ARG:NH1	2.26	0.68
1:D:35:LYS:HE2	1:D:45:SER:HB3	1.75	0.68
1:D:147:ASP:O	1:D:151:THR:HG23	1.93	0.68
1:B:56:ARG:NH2	1:B:235:ASP:OD1	2.27	0.68
1:C:38:ARG:NH2	2:C:1001:UMP:O5'	2.25	0.67
1:A:21:TYR:OH	1:A:207:MET:O	2.13	0.67
2:A:1001:UMP:OP2	1:B:163:ARG:HD2	1.95	0.67
1:C:128:ARG:HH22	1:C:276:ILE:HG21	1.57	0.67
1:B:202:GLN:O	1:B:241:GLY:N	2.27	0.67
1:D:24:GLN:NE2	1:D:51:ALA:HB2	2.10	0.67
1:C:175:ILE:HB	1:C:176:PRO:HD3	1.76	0.66
1:B:21:TYR:OH	1:B:207:MET:O	2.13	0.66
1:C:276:ILE:HD12	1:C:277:ASN:HB2	1.76	0.66
1:D:200:VAL:HG21	1:D:218:TYR:CG	2.30	0.66
1:C:50:GLN:HG3	1:C:51:ALA:N	2.10	0.66
1:D:211:VAL:HB	1:D:212:PRO:HD3	1.78	0.66
1:A:59:PHE:N	1:A:265:PRO:O	2.28	0.66
1:B:108:ARG:NH2	1:C:140:ASN:OD1	2.29	0.66

Continued on next page...

Continued from previous page...

Atom-1	Atom-2	Interatomic distance (Å)	Clash overlap (Å)
1:A:52:ARG:NH2	1:B:47:PHE:O	2.29	0.65
1:B:37:ASP:OD1	1:B:41:ILE:N	2.29	0.65
1:D:262:LYS:HD2	1:D:290:ASN:O	1.96	0.65
1:A:211:VAL:CG2	1:A:212:PRO:HD3	2.26	0.65
1:A:279:PHE:C	1:A:280:LYS:HD2	2.17	0.65
1:B:24:GLN:NE2	1:B:51:ALA:HB2	2.11	0.65
1:B:259:ARG:NH1	1:B:293:PRO:O	2.19	0.65
1:B:41:ILE:HG13	1:B:246:TYR:HD2	1.60	0.65
1:C:75:GLU:OE2	1:C:97:TRP:NE1	2.20	0.65
1:C:163:ARG:CD	1:D:204:SER:HB2	2.25	0.65
1:A:22:LEU:HD22	1:A:257:LEU:CD2	2.27	0.65
1:A:78:TRP:HB2	1:A:89:LEU:HD21	1.76	0.65
1:A:26:ASP:O	1:A:30:ARG:HG3	1.98	0.64
1:D:56:ARG:NH1	1:D:234:GLY:O	2.30	0.64
1:D:203:ARG:HG2	1:D:204:SER:N	2.12	0.64
1:A:210:GLY:HA3	2:A:1001:UMP:N3	2.12	0.64
1:A:148:GLN:O	1:A:152:VAL:HG23	1.96	0.64
1:A:25:VAL:HG12	1:A:29:LEU:HD12	1.79	0.64
1:B:74:GLU:HG3	1:B:94:ILE:HD11	1.79	0.64
1:B:135:LYS:N	1:B:141:TYR:OH	2.21	0.64
1:A:54:ASN:OD1	1:A:56:ARG:HG3	1.98	0.63
1:D:155:THR:O	1:D:159:ASN:N	2.24	0.63
1:C:271:ARG:CZ	1:C:273:VAL:HG22	2.28	0.63
1:C:152:VAL:O	1:C:156:ILE:HG13	1.98	0.63
1:B:116:THR:OG1	1:C:278:ASP:OD2	2.17	0.63
1:D:45:SER:OG	1:D:242:ASP:OD1	2.16	0.63
1:D:181:PRO:HB2	1:D:203:ARG:NH1	2.13	0.62
1:D:36:ARG:HG2	1:D:37:ASP:N	2.14	0.62
1:D:209:LEU:O	1:D:212:PRO:HD2	1.99	0.62
1:D:135:LYS:N	1:D:141:TYR:OH	2.24	0.62
1:A:267:LEU:HD12	1:A:268:LYS:H	1.64	0.62
1:B:189:PHE:HD1	1:B:196:LEU:HD11	1.65	0.61
1:C:211:VAL:HB	1:C:212:PRO:HD3	1.81	0.61
1:A:206:ASP:OD2	1:A:209:LEU:N	2.27	0.61
1:A:180:LEU:HD12	1:B:164:ARG:HH21	1.65	0.61
1:B:171:ASN:ND2	1:B:174:ASP:OD2	2.34	0.61
1:C:56:ARG:NH1	1:C:234:GLY:O	2.34	0.61
1:A:273:VAL:CG1	1:A:278:ASP:HB3	2.30	0.61
1:D:103:SER:O	1:D:107:ASN:ND2	2.26	0.61
1:B:246:TYR:HH	2:B:1001:UMP:HO3'	1.48	0.60
1:B:259:ARG:HB3	1:B:292:HIS:ND1	2.16	0.60

Continued on next page...

Continued from previous page...

Atom-1	Atom-2	Interatomic distance (Å)	Clash overlap (Å)
1:C:122:ILE:HD12	1:C:124:GLY:H	1.65	0.60
1:A:242:ASP:HB2	1:B:190:TYR:CD1	2.36	0.60
1:A:61:LEU:HD12	1:A:216:ALA:HB2	1.81	0.60
1:C:259:ARG:NH1	1:C:293:PRO:O	2.33	0.60
1:D:112:HIS:CD2	1:D:113:LYS:HE2	2.36	0.60
1:C:207:MET:SD	1:C:211:VAL:HG21	2.42	0.60
1:B:37:ASP:OD1	1:B:40:GLY:N	2.35	0.60
1:C:211:VAL:O	1:C:215:ILE:HG13	2.02	0.60
1:C:204:SER:HB2	1:D:163:ARG:HB3	1.84	0.60
1:C:262:LYS:HE3	1:C:292:HIS:HD2	1.65	0.60
1:B:80:ILE:O	1:B:128:ARG:NH2	2.29	0.60
1:C:61:LEU:HG	1:C:67:VAL:HG11	1.84	0.59
1:A:152:VAL:O	1:A:156:ILE:HG13	2.01	0.59
1:B:262:LYS:HB3	1:B:263:PRO:HD2	1.84	0.59
1:C:204:SER:HB2	1:D:163:ARG:CG	2.31	0.59
1:A:130:PHE:HB2	1:A:148:GLN:NE2	2.17	0.59
1:B:133:GLU:OE1	1:B:133:GLU:N	2.35	0.59
1:B:224:ILE:O	1:B:228:VAL:HG23	2.01	0.59
1:B:265:PRO:HB2	1:B:286:LEU:HD22	1.84	0.59
1:C:30:ARG:HG3	1:C:31:TYR:CG	2.38	0.59
1:D:28:ILE:CD1	1:D:207:MET:HG3	2.31	0.58
1:C:268:LYS:HZ2	1:C:287:ASP:HB2	1.67	0.58
1:A:37:ASP:OD1	1:B:163:ARG:NH2	2.24	0.58
1:B:105:PHE:HE2	1:B:179:VAL:HG22	1.67	0.58
1:A:180:LEU:CD1	1:B:164:ARG:HH21	2.15	0.58
1:C:201:TYR:OH	1:D:188:GLN:OE1	2.15	0.58
1:D:92:LYS:HB2	1:D:94:ILE:HD12	1.86	0.58
1:C:276:ILE:HD12	1:C:277:ASN:H	1.68	0.58
1:A:77:LEU:HD22	1:A:279:PHE:O	2.04	0.58
1:A:47:PHE:CE1	1:B:190:TYR:HB2	2.39	0.58
1:D:76:LEU:O	1:D:80:ILE:HG13	2.04	0.58
1:C:206:ASP:N	2:C:1001:UMP:O2	2.36	0.58
1:A:37:ASP:OD2	1:A:39:THR:OG1	2.22	0.58
1:A:151:THR:O	1:A:155:THR:OG1	2.17	0.58
1:B:265:PRO:HB3	1:B:289:TYR:HB2	1.86	0.57
1:D:70:ARG:HA	1:D:281:TRP:CZ3	2.39	0.57
1:D:206:ASP:N	1:D:211:VAL:HG23	2.19	0.57
1:B:259:ARG:HB3	1:B:292:HIS:CE1	2.39	0.57
1:A:76:LEU:HD21	1:A:224:ILE:HD12	1.86	0.57
1:D:251:ASP:O	1:D:255:VAL:HG23	2.05	0.57
1:D:24:GLN:O	1:D:28:ILE:HG13	2.04	0.57

Continued on next page...

Continued from previous page...

Atom-1	Atom-2	Interatomic distance (Å)	Clash overlap (Å)
1:D:152:VAL:O	1:D:156:ILE:HG13	2.04	0.57
1:A:180:LEU:HD12	1:A:181:PRO:HD2	1.86	0.57
1:C:18:GLU:HB2	1:C:264:PHE:HZ	1.69	0.57
1:A:212:PRO:HA	1:A:215:ILE:HD12	1.86	0.57
1:C:169:SER:N	1:C:185:THR:O	2.30	0.57
1:A:130:PHE:HB2	1:A:148:GLN:HE21	1.70	0.57
1:A:122:ILE:HD12	1:A:124:GLY:H	1.69	0.57
1:A:38:ARG:NE	2:A:1001:UMP:OP1	2.27	0.57
1:C:202:GLN:O	1:C:241:GLY:N	2.34	0.56
1:C:147:ASP:OD2	1:C:150:GLN:HB2	2.05	0.56
1:D:126:GLN:NE2	1:D:174:ASP:OD2	2.33	0.56
1:C:131:GLY:HA2	1:C:173:LYS:HE3	1.87	0.56
1:C:164:ARG:HD3	1:D:181:PRO:HG2	1.86	0.56
1:C:135:LYS:HD2	1:C:139:SER:OG	2.05	0.56
1:B:75:GLU:HG3	1:B:76:LEU:N	2.20	0.56
1:D:280:LYS:N	1:D:283:ASP:OD2	2.36	0.56
1:C:70:ARG:HA	1:C:281:TRP:CZ3	2.40	0.56
1:B:178:MET:SD	1:B:182:PRO:HD3	2.45	0.56
1:C:214:ASN:O	1:C:218:TYR:N	2.31	0.56
1:D:148:GLN:O	1:D:152:VAL:HG13	2.04	0.56
1:C:92:LYS:O	1:C:93:ASP:HB2	2.05	0.56
1:C:276:ILE:HD12	1:C:277:ASN:N	2.20	0.56
1:D:93:ASP:HA	1:D:95:HIS:NE2	2.20	0.56
2:C:1001:UMP:OP1	1:D:164:ARG:NE	2.37	0.56
1:C:59:PHE:O	1:C:264:PHE:HB3	2.05	0.56
1:A:79:PHE:CE1	1:A:123:TYR:HB2	2.40	0.56
1:C:141:TYR:O	1:C:144:GLN:HB2	2.06	0.56
1:B:148:GLN:OE1	1:B:168:SER:N	2.36	0.56
1:A:246:TYR:OH	2:A:1001:UMP:O3'	2.23	0.56
1:C:59:PHE:CE1	1:C:267:LEU:HD22	2.41	0.56
1:A:271:ARG:NH1	1:A:278:ASP:OD2	2.39	0.55
1:A:65:LYS:HE2	1:A:295:LEU:H	1.71	0.55
1:B:271:ARG:NH2	1:B:283:ASP:OD2	2.38	0.55
1:A:70:ARG:HG3	1:A:281:TRP:HE1	1.70	0.55
1:A:175:ILE:HB	1:A:176:PRO:HD3	1.87	0.55
1:A:164:ARG:CD	1:B:181:PRO:HG2	2.36	0.55
1:A:163:ARG:O	1:A:188:GLN:NE2	2.38	0.55
1:D:106:LEU:HD13	1:D:114:ARG:HB3	1.87	0.55
1:C:242:ASP:OD1	1:C:244:HIS:ND1	2.38	0.55
1:B:171:ASN:O	1:B:174:ASP:N	2.38	0.55
1:A:70:ARG:CG	1:A:281:TRP:HE1	2.20	0.55

Continued on next page...

Continued from previous page...

Atom-1	Atom-2	Interatomic distance (Å)	Clash overlap (Å)
1:C:35:LYS:O	1:C:43:THR:N	2.31	0.55
1:D:60:PRO:HA	1:D:264:PHE:CD2	2.41	0.55
1:D:84:THR:CG2	1:D:119:LEU:HB2	2.37	0.55
1:A:25:VAL:HB	1:A:257:LEU:HD11	1.89	0.55
1:D:59:PHE:O	1:D:264:PHE:HB3	2.06	0.55
1:A:50:GLN:OE1	1:B:50:GLN:HB2	2.06	0.55
1:D:270:ILE:HD11	1:D:285:GLN:HB2	1.88	0.55
1:D:155:THR:OG1	1:D:165:MET:SD	2.63	0.55
1:C:128:ARG:HH12	1:C:276:ILE:HB	1.72	0.55
1:C:182:PRO:O	1:C:203:ARG:NH1	2.39	0.55
1:C:135:LYS:HG3	1:C:136:ASP:N	2.19	0.55
1:B:135:LYS:H	1:B:141:TYR:HH	1.51	0.55
1:A:204:SER:CB	1:B:163:ARG:HD3	2.36	0.55
1:D:260:SER:O	1:D:292:HIS:NE2	2.40	0.54
1:C:204:SER:HB2	1:D:163:ARG:CB	2.37	0.54
1:C:60:PRO:HA	1:C:264:PHE:CD2	2.42	0.54
1:A:69:TRP:O	1:A:73:VAL:HG23	2.06	0.54
1:C:41:ILE:HD12	1:C:42:GLY:H	1.73	0.54
1:B:140:ASN:ND2	1:B:142:LEU:HD23	2.23	0.54
1:B:74:GLU:HG3	1:B:94:ILE:CD1	2.38	0.54
1:B:15:LEU:O	1:B:16:THR:HG22	2.06	0.54
1:D:64:THR:OG1	1:D:256:GLN:NE2	2.30	0.54
1:C:142:LEU:O	1:C:143:GLN:HB2	2.08	0.54
1:B:121:PRO:HB2	1:B:126:GLN:NE2	2.22	0.54
1:B:74:GLU:HB2	1:B:94:ILE:HD12	1.90	0.54
1:A:242:ASP:HB2	1:B:190:TYR:HD1	1.72	0.54
1:D:70:ARG:HG3	1:D:281:TRP:CZ3	2.43	0.54
1:A:184:HIS:CD2	1:A:218:TYR:HE2	2.26	0.54
1:A:128:ARG:NH1	1:A:149:LEU:HD23	2.23	0.54
1:B:249:HIS:O	1:B:253:LEU:HB2	2.06	0.54
1:D:246:TYR:OH	2:D:1001:UMP:O3'	2.22	0.54
1:A:210:GLY:HA3	2:A:1001:UMP:HN3	1.72	0.54
1:A:250:ILE:HG23	1:A:254:LYS:HE3	1.89	0.54
1:A:129:HIS:NE2	1:A:142:LEU:HA	2.22	0.54
1:B:75:GLU:O	1:B:79:PHE:N	2.40	0.54
1:A:22:LEU:HD11	1:A:64:THR:HG21	1.89	0.53
1:A:78:TRP:NE1	1:A:83:SER:O	2.41	0.53
1:C:84:THR:HB	1:C:122:ILE:HG13	1.89	0.53
1:B:212:PRO:HA	1:B:215:ILE:HD12	1.91	0.53
1:B:160:PRO:O	1:B:191:VAL:HB	2.08	0.53
1:B:80:ILE:HD13	1:B:276:ILE:HG12	1.90	0.53

Continued on next page...

Continued from previous page...

Atom-1	Atom-2	Interatomic distance (Å)	Clash overlap (Å)
1:C:268:LYS:NZ	1:C:287:ASP:HB2	2.23	0.53
1:B:41:ILE:HG13	1:B:246:TYR:CD2	2.41	0.53
1:B:76:LEU:O	1:B:80:ILE:N	2.36	0.53
1:B:76:LEU:O	1:B:80:ILE:HG13	2.09	0.53
1:A:58:GLU:O	1:A:223:TYR:OH	2.26	0.53
1:B:142:LEU:HD12	1:B:143:GLN:CG	2.33	0.53
1:D:70:ARG:HG3	1:D:281:TRP:CE3	2.44	0.53
1:C:123:TYR:N	1:C:123:TYR:CD2	2.77	0.53
1:C:127:TRP:O	1:C:148:GLN:HG3	2.08	0.53
1:B:171:ASN:C	1:B:175:ILE:HD13	2.29	0.53
1:A:81:ARG:NE	1:A:88:GLU:OE2	2.41	0.53
1:B:88:GLU:O	1:B:92:LYS:NZ	2.41	0.53
1:C:265:PRO:HB3	1:C:288:GLY:C	2.30	0.53
1:D:101:GLY:HA3	1:D:117:GLY:HA2	1.90	0.52
1:A:24:GLN:O	1:A:28:ILE:HG13	2.08	0.52
1:B:125:PHE:CZ	1:B:132:ALA:HB3	2.44	0.52
1:D:202:GLN:OE1	1:D:238:HIS:NE2	2.34	0.52
1:C:20:GLN:O	1:C:24:GLN:HG3	2.09	0.52
1:A:169:SER:O	1:A:182:PRO:HG3	2.10	0.52
1:D:73:VAL:HG22	1:D:220:LEU:CD2	2.40	0.52
1:B:185:THR:O	1:B:186:LEU:HB3	2.10	0.52
1:C:237:ILE:HD12	1:C:237:ILE:N	2.25	0.52
1:B:237:ILE:N	1:B:237:ILE:HD12	2.25	0.52
1:D:189:PHE:CD1	1:D:196:LEU:HD11	2.45	0.52
1:D:121:PRO:HG3	1:D:134:TYR:CG	2.45	0.52
1:B:142:LEU:O	1:B:143:GLN:HB2	2.10	0.52
1:C:163:ARG:HH11	2:D:1001:UMP:P	2.33	0.52
1:D:128:ARG:NH1	1:D:149:LEU:HB3	2.24	0.52
1:B:268:LYS:HG2	1:B:269:ILE:N	2.25	0.52
1:B:246:TYR:HB3	1:B:248:ASN:OD1	2.11	0.51
1:C:84:THR:HB	1:C:122:ILE:CG1	2.40	0.51
1:B:28:ILE:O	1:B:32:GLY:N	2.43	0.51
1:B:108:ARG:NH2	1:C:138:GLN:O	2.44	0.51
1:D:55:LEU:HD22	1:D:223:TYR:HE1	1.75	0.51
1:A:154:ASP:O	1:A:158:THR:HG23	2.10	0.51
1:D:35:LYS:HE2	1:D:45:SER:CB	2.41	0.51
1:B:24:GLN:O	1:B:28:ILE:HG13	2.11	0.51
1:C:224:ILE:HG23	1:C:279:PHE:CZ	2.45	0.51
1:B:168:SER:HA	1:B:186:LEU:HB3	1.93	0.51
1:C:122:ILE:HD12	1:C:124:GLY:N	2.25	0.51
1:C:59:PHE:N	1:C:265:PRO:O	2.39	0.51

Continued on next page...

Continued from previous page...

Atom-1	Atom-2	Interatomic distance (Å)	Clash overlap (Å)
1:C:224:ILE:HG23	1:C:279:PHE:CE2	2.45	0.51
1:A:185:THR:HG21	1:B:186:LEU:HD21	1.93	0.51
1:B:262:LYS:NZ	1:B:290:ASN:HB3	2.26	0.51
1:C:37:ASP:HB2	1:C:43:THR:CG2	2.40	0.51
1:A:289:TYR:CZ	1:A:291:PRO:HG3	2.45	0.51
1:D:249:HIS:O	1:D:253:LEU:HG	2.10	0.51
1:C:274:THR:O	1:C:275:ASP:HB2	2.11	0.51
1:D:148:GLN:OE1	1:D:168:SER:N	2.30	0.50
1:B:36:ARG:HA	1:B:42:GLY:HA2	1.93	0.50
1:C:19:LEU:HD23	1:C:22:LEU:HD12	1.92	0.50
1:B:140:ASN:HD21	1:B:142:LEU:CD2	2.24	0.50
1:A:158:THR:OG1	1:A:159:ASN:N	2.42	0.50
1:C:247:LEU:CD2	1:C:250:ILE:HD11	2.42	0.50
1:A:164:ARG:NH1	1:B:181:PRO:HD2	2.26	0.50
1:A:225:VAL:O	1:A:229:THR:OG1	2.23	0.50
1:C:208:GLY:O	1:C:209:LEU:HD13	2.12	0.50
1:C:163:ARG:HD2	2:D:1001:UMP:OP2	2.11	0.50
1:B:259:ARG:HD2	1:B:292:HIS:ND1	2.26	0.50
1:A:149:LEU:O	1:A:153:ILE:HG13	2.12	0.50
1:A:167:ILE:HB	1:A:187:CYS:SG	2.52	0.50
1:A:66:ARG:HB3	1:A:294:PRO:HG3	1.93	0.50
1:A:168:SER:HA	1:A:186:LEU:HB3	1.94	0.50
1:A:275:ASP:OD1	1:A:276:ILE:N	2.45	0.50
1:B:129:HIS:HB3	1:B:144:GLN:O	2.12	0.50
1:C:271:ARG:HD3	1:C:273:VAL:HG22	1.94	0.50
1:C:123:TYR:H	1:C:123:TYR:HD2	1.60	0.50
1:D:224:ILE:HG23	1:D:279:PHE:CZ	2.47	0.50
1:B:43:THR:HG22	1:B:246:TYR:CA	2.35	0.49
1:A:56:ARG:NH2	1:A:235:ASP:OD1	2.45	0.49
1:D:189:PHE:HD1	1:D:196:LEU:HD11	1.77	0.49
1:C:118:ASP:N	1:C:137:CYS:HG	2.10	0.49
1:C:62:LEU:HD12	1:C:212:PRO:HB3	1.93	0.49
1:B:268:LYS:HG2	1:B:269:ILE:H	1.77	0.49
1:C:204:SER:CB	1:D:163:ARG:HG2	2.40	0.49
1:A:204:SER:HB2	1:B:163:ARG:CD	2.40	0.49
1:C:84:THR:OG1	1:C:84:THR:O	2.30	0.49
1:C:185:THR:OG1	1:C:186:LEU:HG	2.12	0.49
1:B:148:GLN:CB	1:B:167:ILE:HG23	2.42	0.49
1:B:211:VAL:CB	1:B:212:PRO:HD3	2.43	0.49
1:B:74:GLU:CB	1:B:94:ILE:HD12	2.43	0.49
1:A:43:THR:HB	1:A:244:HIS:HB2	1.94	0.49

Continued on next page...

Continued from previous page...

Atom-1	Atom-2	Interatomic distance (Å)	Clash overlap (Å)
1:B:184:HIS:CD2	1:B:184:HIS:H	2.31	0.49
1:D:18:GLU:HG3	1:D:62:LEU:HD22	1.95	0.49
1:B:119:LEU:O	1:B:179:VAL:HB	2.12	0.49
1:C:123:TYR:N	1:C:123:TYR:HD2	2.09	0.49
1:A:39:THR:OG1	1:A:41:ILE:HG22	2.12	0.49
1:C:76:LEU:O	1:C:80:ILE:HG13	2.11	0.49
1:B:66:ARG:NH2	1:B:291:PRO:HD2	2.28	0.49
1:A:245:ILE:HD13	1:A:253:LEU:HD13	1.95	0.49
1:A:290:ASN:N	1:A:291:PRO:HD3	2.28	0.49
1:D:292:HIS:HB3	1:D:293:PRO:CD	2.32	0.48
1:C:61:LEU:CG	1:C:67:VAL:HG11	2.43	0.48
1:C:68:PHE:O	1:C:72:VAL:HG23	2.12	0.48
1:A:20:GLN:O	1:A:24:GLN:HG3	2.12	0.48
1:A:289:TYR:C	1:A:291:PRO:HD3	2.33	0.48
1:C:18:GLU:HB2	1:C:264:PHE:CZ	2.46	0.48
1:B:262:LYS:HB3	1:B:263:PRO:CD	2.42	0.48
1:D:15:LEU:O	1:D:16:THR:HG22	2.13	0.48
1:D:273:VAL:HG12	1:D:275:ASP:O	2.12	0.48
1:C:146:ILE:N	1:C:146:ILE:HD12	2.29	0.48
1:D:180:LEU:HG	1:D:181:PRO:HD2	1.94	0.48
1:A:185:THR:HG21	1:B:186:LEU:CD2	2.43	0.48
1:D:36:ARG:HG2	1:D:37:ASP:O	2.13	0.48
1:B:186:LEU:C	1:B:186:LEU:HD12	2.33	0.48
1:C:128:ARG:NH1	1:C:276:ILE:HD13	2.28	0.48
1:D:70:ARG:CZ	1:D:94:ILE:HD11	2.44	0.48
1:D:202:GLN:HG2	1:D:204:SER:O	2.14	0.48
1:B:148:GLN:HB3	1:B:167:ILE:HG23	1.96	0.48
1:C:30:ARG:HG3	1:C:31:TYR:CD1	2.49	0.48
1:A:96:ILE:HG13	1:A:97:TRP:CD1	2.48	0.48
1:D:87:LYS:NZ	1:D:116:THR:O	2.31	0.48
1:D:29:LEU:HA	1:D:44:LEU:HD12	1.96	0.48
1:A:199:GLN:HA	1:A:237:ILE:O	2.14	0.48
1:C:199:GLN:HG3	1:C:237:ILE:HB	1.96	0.48
1:D:85:ASP:OD1	1:D:87:LYS:HG3	2.14	0.48
1:A:92:LYS:N	1:A:92:LYS:HD3	2.29	0.48
1:A:122:ILE:CD1	1:A:124:GLY:H	2.27	0.48
1:D:84:THR:HG23	1:D:119:LEU:HB2	1.95	0.48
1:C:190:TYR:O	1:C:196:LEU:HD12	2.14	0.48
1:D:62:LEU:HD12	1:D:212:PRO:CB	2.28	0.47
1:B:50:GLN:HG3	1:B:239:THR:OG1	2.14	0.47
1:D:237:ILE:HD12	1:D:237:ILE:N	2.29	0.47

Continued on next page...

Continued from previous page...

Atom-1	Atom-2	Interatomic distance (Å)	Clash overlap (Å)
1:C:172:PRO:HA	1:C:175:ILE:HG12	1.96	0.47
1:D:126:GLN:O	1:D:148:GLN:NE2	2.41	0.47
1:C:130:PHE:H	1:C:146:ILE:H	1.61	0.47
1:D:200:VAL:HG11	1:D:218:TYR:CE2	2.50	0.47
1:B:82:GLY:HA2	1:B:124:GLY:O	2.15	0.47
1:B:168:SER:HA	1:B:186:LEU:CB	2.44	0.47
1:B:250:ILE:O	1:B:254:LYS:HG3	2.14	0.47
1:C:68:PHE:HE2	1:C:70:ARG:HB3	1.79	0.47
1:B:206:ASP:N	2:B:1001:UMP:O2	2.48	0.47
1:A:44:LEU:O	1:A:244:HIS:HA	2.14	0.47
1:A:61:LEU:HD12	1:A:216:ALA:CB	2.44	0.47
1:C:80:ILE:O	1:C:128:ARG:HD2	2.15	0.47
1:B:44:LEU:O	1:B:244:HIS:HA	2.13	0.47
1:A:195:GLU:HG2	1:A:232:LYS:HE3	1.96	0.47
1:C:118:ASP:N	1:C:137:CYS:SG	2.88	0.47
1:C:89:LEU:HD22	1:C:94:ILE:CD1	2.45	0.47
1:C:131:GLY:HA2	1:C:173:LYS:CE	2.45	0.47
1:C:162:SER:HB3	1:C:165:MET:HG3	1.97	0.46
1:A:84:THR:HB	1:A:122:ILE:CG1	2.40	0.46
1:C:128:ARG:HH22	1:C:276:ILE:CG2	2.23	0.46
1:D:56:ARG:HH12	1:D:235:ASP:CG	2.19	0.46
1:A:281:TRP:HE3	1:A:282:ASP:HA	1.80	0.46
1:D:101:GLY:CA	1:D:117:GLY:HA2	2.45	0.46
1:C:171:ASN:O	1:C:175:ILE:HG12	2.15	0.46
1:C:271:ARG:NE	1:C:273:VAL:HG22	2.30	0.46
1:A:271:ARG:NH1	1:A:273:VAL:HG22	2.29	0.46
1:C:270:ILE:HD11	1:C:285:GLN:OE1	2.16	0.46
1:C:226:ALA:O	1:C:230:GLY:N	2.49	0.46
1:C:48:GLY:HA3	1:D:237:ILE:HG12	1.96	0.46
1:B:86:SER:OG	1:B:117:GLY:HA2	2.15	0.46
1:B:249:HIS:HB3	1:B:253:LEU:HD23	1.98	0.46
1:B:268:LYS:NZ	1:B:269:ILE:O	2.49	0.46
1:D:173:LYS:O	1:D:176:PRO:HD2	2.16	0.46
1:A:20:GLN:NE2	1:A:52:ARG:O	2.25	0.46
1:B:224:ILE:HG23	1:B:279:PHE:CE2	2.51	0.46
1:A:173:LYS:HE3	1:B:130:PHE:O	2.16	0.46
1:B:203:ARG:HG3	1:B:204:SER:N	2.30	0.46
1:A:37:ASP:HB2	1:A:43:THR:HG23	1.97	0.46
1:A:289:TYR:CD1	1:A:291:PRO:HG3	2.50	0.46
1:B:24:GLN:HE22	1:B:51:ALA:HB2	1.80	0.46
1:A:267:LEU:HD12	1:A:268:LYS:N	2.29	0.46

Continued on next page...

Continued from previous page...

Atom-1	Atom-2	Interatomic distance (Å)	Clash overlap (Å)
1:B:203:ARG:NH1	2:B:1001:UMP:OP1	2.35	0.46
1:A:280:LYS:HB3	1:A:280:LYS:HE3	1.77	0.46
1:B:189:PHE:CD1	1:B:196:LEU:HD11	2.48	0.46
1:B:124:GLY:O	1:B:128:ARG:HG2	2.15	0.46
1:C:59:PHE:HD2	1:C:61:LEU:HB2	1.81	0.46
1:A:69:TRP:HD1	1:A:70:ARG:CZ	2.28	0.46
1:B:130:PHE:H	1:B:146:ILE:H	1.63	0.46
1:A:84:THR:OG1	1:A:84:THR:O	2.31	0.45
1:C:172:PRO:HD2	1:D:130:PHE:CE1	2.51	0.45
1:D:188:GLN:O	1:D:198:CYS:HA	2.16	0.45
1:A:130:PHE:CE1	1:B:172:PRO:HD2	2.51	0.45
1:C:70:ARG:HG3	1:C:281:TRP:CZ2	2.51	0.45
1:D:84:THR:HG23	1:D:119:LEU:HD23	1.98	0.45
1:D:220:LEU:O	1:D:224:ILE:HG13	2.16	0.45
1:D:78:TRP:HE1	1:D:85:ASP:H	1.64	0.45
1:A:163:ARG:NH1	2:B:1001:UMP:O5'	2.49	0.45
1:A:37:ASP:O	1:A:40:GLY:N	2.45	0.45
1:C:262:LYS:NZ	1:C:290:ASN:O	2.32	0.45
1:C:119:LEU:HD22	1:C:179:VAL:HG11	1.96	0.45
1:D:60:PRO:HA	1:D:264:PHE:CE2	2.52	0.45
1:D:21:TYR:O	1:D:25:VAL:HG23	2.16	0.45
1:B:147:ASP:O	1:B:151:THR:HB	2.17	0.45
1:A:204:SER:HB2	1:B:163:ARG:HB3	1.98	0.45
1:C:276:ILE:CD1	1:C:277:ASN:H	2.30	0.45
1:B:128:ARG:HD2	1:B:128:ARG:N	2.32	0.45
1:C:199:GLN:OE1	1:D:48:GLY:HA2	2.16	0.45
1:A:61:LEU:HD23	1:A:289:TYR:CZ	2.51	0.45
1:B:62:LEU:HD12	1:B:212:PRO:HB3	1.98	0.45
1:B:248:ASN:N	1:B:248:ASN:OD1	2.42	0.45
1:A:41:ILE:HG12	1:A:42:GLY:N	2.32	0.45
1:A:279:PHE:O	1:A:280:LYS:HD2	2.17	0.45
1:C:121:PRO:HG2	1:C:174:ASP:HB3	1.99	0.45
1:C:48:GLY:O	1:D:52:ARG:NH2	2.50	0.45
1:C:151:THR:O	1:C:155:THR:OG1	2.29	0.45
1:B:170:TRP:NE1	1:B:172:PRO:HG3	2.31	0.45
1:C:128:ARG:HA	1:C:147:ASP:OD1	2.17	0.45
1:A:76:LEU:O	1:A:79:PHE:N	2.47	0.45
1:D:171:ASN:O	1:D:175:ILE:HG12	2.17	0.45
1:A:161:GLU:OE1	1:B:35:LYS:HD2	2.17	0.45
1:C:86:SER:HB2	1:C:98:ASP:OD1	2.17	0.45
1:A:281:TRP:CE3	1:A:282:ASP:HA	2.52	0.44

Continued on next page...

Continued from previous page...

Atom-1	Atom-2	Interatomic distance (Å)	Clash overlap (Å)
1:C:170:TRP:CE3	1:C:182:PRO:HG2	2.52	0.44
1:B:29:LEU:HA	1:B:29:LEU:HD23	1.81	0.44
1:D:142:LEU:HD12	1:D:142:LEU:O	2.17	0.44
1:C:210:GLY:HA3	2:C:1001:UMP:N3	2.32	0.44
1:D:118:ASP:OD1	1:D:134:TYR:OH	2.26	0.44
1:A:271:ARG:HH12	1:A:278:ASP:CG	2.21	0.44
1:C:173:LYS:HG3	1:C:174:ASP:N	2.32	0.44
1:A:175:ILE:HD13	1:A:178:MET:HE3	1.99	0.44
1:C:135:LYS:HD2	1:C:139:SER:CB	2.47	0.44
1:A:37:ASP:HB2	1:A:43:THR:CG2	2.47	0.44
1:B:21:TYR:HB2	1:B:53:TYR:OH	2.18	0.44
1:C:255:VAL:O	1:C:259:ARG:HG3	2.17	0.44
1:A:262:LYS:HG2	1:A:292:HIS:HE1	1.81	0.44
1:A:28:ILE:HD13	1:A:243:ALA:O	2.18	0.44
1:B:126:GLN:O	1:B:148:GLN:NE2	2.50	0.44
1:C:262:LYS:HD2	1:C:290:ASN:O	2.18	0.44
1:D:73:VAL:HG22	1:D:220:LEU:HD21	1.99	0.44
1:D:82:GLY:HA2	1:D:124:GLY:O	2.18	0.44
1:B:105:PHE:CE2	1:B:179:VAL:HG22	2.51	0.44
1:A:122:ILE:HD12	1:A:124:GLY:N	2.31	0.44
1:C:271:ARG:HD3	1:C:273:VAL:CG2	2.47	0.44
1:D:161:GLU:H	1:D:161:GLU:HG2	1.44	0.44
1:B:43:THR:HG22	1:B:246:TYR:CG	2.52	0.44
1:C:237:ILE:H	1:C:237:ILE:HD12	1.83	0.44
1:A:227:HIS:HD2	1:A:279:PHE:HZ	1.65	0.44
1:B:202:GLN:NE2	1:B:214:ASN:OD1	2.51	0.43
1:C:119:LEU:O	1:C:122:ILE:HG23	2.18	0.43
1:C:255:VAL:HG13	1:C:256:GLN:N	2.32	0.43
1:D:64:THR:CB	1:D:256:GLN:HE21	2.30	0.43
1:C:190:TYR:CE2	1:C:192:ALA:HB2	2.53	0.43
1:C:206:ASP:N	1:C:211:VAL:HG23	2.33	0.43
1:C:67:VAL:HG12	1:C:289:TYR:OH	2.18	0.43
1:D:64:THR:HB	1:D:256:GLN:CG	2.48	0.43
1:C:202:GLN:HG2	1:C:204:SER:O	2.19	0.43
1:A:293:PRO:HA	1:A:294:PRO:HD3	1.88	0.43
1:A:71:ALA:HA	1:A:94:ILE:HD13	1.99	0.43
1:A:211:VAL:N	1:A:212:PRO:CD	2.81	0.43
1:D:273:VAL:HG13	1:D:278:ASP:HB3	2.00	0.43
1:C:78:TRP:O	1:C:83:SER:OG	2.34	0.43
1:C:121:PRO:HG2	1:C:177:LEU:HB2	2.01	0.43
1:A:69:TRP:HD1	1:A:70:ARG:NE	2.16	0.43

Continued on next page...

Continued from previous page...

Atom-1	Atom-2	Interatomic distance (Å)	Clash overlap (Å)
1:B:221:LEU:O	1:B:225:VAL:HG23	2.18	0.43
1:A:18:GLU:HB2	1:A:264:PHE:CZ	2.53	0.43
1:A:195:GLU:HG2	1:A:232:LYS:HB2	2.01	0.43
1:D:221:LEU:O	1:D:225:VAL:HG23	2.19	0.43
1:D:120:GLY:HA2	1:D:134:TYR:CE2	2.54	0.43
1:A:180:LEU:HA	1:A:181:PRO:HD3	1.91	0.43
1:B:220:LEU:O	1:B:224:ILE:HG13	2.19	0.43
1:C:182:PRO:HB2	1:C:184:HIS:O	2.19	0.43
1:C:66:ARG:HB3	1:C:294:PRO:HG3	2.00	0.43
1:A:17:GLY:O	1:A:20:GLN:HG3	2.19	0.43
1:A:271:ARG:HD2	1:A:273:VAL:HG22	2.01	0.43
1:C:121:PRO:O	1:C:126:GLN:NE2	2.49	0.43
1:D:44:LEU:O	1:D:244:HIS:HA	2.19	0.43
1:A:20:GLN:OE1	1:A:52:ARG:N	2.48	0.43
1:C:237:ILE:HD13	1:D:47:PHE:CD2	2.54	0.43
1:B:56:ARG:HG2	1:B:233:THR:O	2.19	0.43
1:B:271:ARG:HD2	1:B:273:VAL:HG22	2.00	0.42
1:B:218:TYR:HB3	1:B:236:LEU:HD11	2.01	0.42
1:D:172:PRO:HA	1:D:175:ILE:CG1	2.49	0.42
1:A:68:PHE:HB3	1:A:213:PHE:HE2	1.84	0.42
1:D:203:ARG:O	1:D:241:GLY:HA3	2.20	0.42
1:C:38:ARG:HE	2:C:1001:UMP:P	2.41	0.42
1:D:224:ILE:O	1:D:227:HIS:HB3	2.19	0.42
1:D:195:GLU:HG2	1:D:232:LYS:HB2	2.01	0.42
1:D:180:LEU:HA	1:D:181:PRO:HD3	1.85	0.42
1:B:254:LYS:O	1:B:257:LEU:HB2	2.20	0.42
1:D:79:PHE:CE1	1:D:123:TYR:HB2	2.54	0.42
1:D:28:ILE:CG2	1:D:245:ILE:HD12	2.49	0.42
1:C:247:LEU:HD22	1:C:250:ILE:HD11	2.02	0.42
1:C:89:LEU:HD12	1:C:97:TRP:HB2	2.01	0.42
1:A:123:TYR:H	1:A:123:TYR:HD2	1.64	0.42
1:A:188:GLN:OE1	1:B:201:TYR:OH	2.30	0.42
1:C:30:ARG:HG3	1:C:31:TYR:N	2.34	0.42
1:A:50:GLN:HB2	1:B:50:GLN:OE1	2.20	0.42
1:D:21:TYR:CE1	1:D:212:PRO:HG3	2.55	0.42
1:C:64:THR:O	1:C:292:HIS:HB2	2.20	0.42
1:A:184:HIS:ND1	1:A:184:HIS:N	2.67	0.42
1:D:186:LEU:C	1:D:186:LEU:HD12	2.40	0.42
1:B:90:ALA:HB2	1:B:98:ASP:OD1	2.20	0.42
1:C:121:PRO:CG	1:C:177:LEU:HB2	2.50	0.42
1:C:73:VAL:O	1:C:77:LEU:HG	2.19	0.42

Continued on next page...

Continued from previous page...

Atom-1	Atom-2	Interatomic distance (Å)	Clash overlap (Å)
1:C:246:TYR:OH	2:C:1001:UMP:O3'	2.33	0.42
1:C:271:ARG:CD	1:C:273:VAL:HG22	2.49	0.42
1:D:172:PRO:HA	1:D:175:ILE:HG12	2.00	0.42
1:B:161:GLU:HG2	1:B:161:GLU:O	2.19	0.42
1:A:206:ASP:HB2	1:A:246:TYR:HE1	1.85	0.42
1:A:25:VAL:HG13	1:A:245:ILE:HD11	2.02	0.42
1:B:55:LEU:O	1:B:233:THR:OG1	2.38	0.42
1:D:135:LYS:HB3	1:D:135:LYS:HE2	1.82	0.42
1:B:58:GLU:HB2	1:B:264:PHE:HB2	2.01	0.42
1:A:211:VAL:O	1:A:215:ILE:HG13	2.20	0.41
1:B:41:ILE:HG23	1:B:41:ILE:O	2.19	0.41
2:C:1001:UMP:OP1	1:D:164:ARG:NH2	2.51	0.41
1:B:148:GLN:O	1:B:151:THR:HG22	2.20	0.41
1:A:130:PHE:H	1:A:146:ILE:H	1.67	0.41
1:D:103:SER:HA	1:D:106:LEU:HB2	2.02	0.41
1:D:200:VAL:HG21	1:D:218:TYR:CD2	2.55	0.41
1:A:65:LYS:CE	1:A:295:LEU:H	2.33	0.41
1:B:273:VAL:HG12	1:B:275:ASP:O	2.19	0.41
1:C:271:ARG:NH1	1:C:273:VAL:HG22	2.34	0.41
1:D:211:VAL:CB	1:D:212:PRO:HD3	2.48	0.41
1:C:250:ILE:CG2	1:C:254:LYS:HE3	2.50	0.41
1:A:56:ARG:NH1	1:A:234:GLY:HA2	2.35	0.41
1:D:113:LYS:HA	1:D:113:LYS:HD3	1.91	0.41
1:C:70:ARG:HG3	1:C:281:TRP:CE2	2.56	0.41
1:B:26:ASP:O	1:B:30:ARG:HG3	2.21	0.41
1:B:55:LEU:HD11	1:B:236:LEU:HB2	2.02	0.41
1:D:175:ILE:HD13	1:D:178:MET:HE3	2.02	0.41
1:A:122:ILE:H	1:A:122:ILE:HG13	1.76	0.41
1:B:254:LYS:HE3	1:B:254:LYS:HB2	1.77	0.41
1:C:128:ARG:HA	1:C:147:ASP:HA	2.03	0.41
1:A:68:PHE:O	1:A:72:VAL:HG23	2.21	0.41
1:C:206:ASP:HB3	2:C:1001:UMP:O2	2.20	0.41
1:B:262:LYS:HZ2	1:B:290:ASN:HB3	1.85	0.41
1:C:121:PRO:HB3	1:C:125:PHE:CD2	2.55	0.41
1:A:250:ILE:CG2	1:A:254:LYS:HE3	2.49	0.41
1:A:21:TYR:O	1:A:24:GLN:HB2	2.20	0.41
1:B:175:ILE:HG22	1:B:176:PRO:CD	2.51	0.41
1:C:280:LYS:N	1:C:283:ASP:OD2	2.47	0.41
1:C:50:GLN:HA	1:C:238:HIS:O	2.21	0.41
1:B:141:TYR:O	1:B:144:GLN:HB2	2.21	0.41
1:D:14:THR:O	1:D:15:LEU:HD23	2.20	0.41

Continued on next page...

Continued from previous page...

Atom-1	Atom-2	Interatomic distance (Å)	Clash overlap (Å)
1:D:209:LEU:HD23	1:D:209:LEU:HA	1.85	0.41
1:B:43:THR:HG22	1:B:246:TYR:CD2	2.56	0.41
1:D:181:PRO:C	1:D:203:ARG:HH12	2.24	0.41
1:C:166:ILE:HD11	1:D:203:ARG:HB2	2.01	0.41
2:C:1001:UMP:OP2	1:D:163:ARG:HD3	2.20	0.41
1:B:16:THR:HG23	1:B:16:THR:O	2.21	0.41
1:A:58:GLU:HA	1:A:266:CYS:HA	2.02	0.41
1:A:97:TRP:CE3	1:A:119:LEU:HD13	2.55	0.41
1:A:237:ILE:HG12	1:B:48:GLY:HA3	2.03	0.41
1:A:195:GLU:HG2	1:A:232:LYS:CE	2.51	0.41
1:B:22:LEU:HD11	1:B:64:THR:HG21	2.01	0.41
1:A:273:VAL:HG12	1:A:275:ASP:H	1.85	0.41
1:C:252:ALA:O	1:C:255:VAL:HG12	2.20	0.41
1:B:133:GLU:O	1:B:135:LYS:NZ	2.53	0.40
1:C:67:VAL:HG23	1:C:213:PHE:CE1	2.55	0.40
1:A:175:ILE:CD1	1:A:182:PRO:HD2	2.51	0.40
1:D:64:THR:HB	1:D:256:GLN:HG2	2.03	0.40
1:D:25:VAL:HG13	1:D:245:ILE:HD11	2.03	0.40
1:C:82:GLY:HA2	1:C:124:GLY:O	2.20	0.40
1:B:75:GLU:O	1:B:78:TRP:HB3	2.21	0.40
1:C:30:ARG:HG3	1:C:31:TYR:CD2	2.56	0.40
1:C:28:ILE:O	1:C:32:GLY:HA3	2.22	0.40
1:C:172:PRO:HA	1:C:175:ILE:CG1	2.50	0.40
1:D:203:ARG:HH21	2:D:1001:UMP:P	2.44	0.40
1:C:276:ILE:CG1	1:C:277:ASN:H	2.34	0.40

There are no symmetry-related clashes.

5.3 Torsion angles

5.3.1 Protein backbone

In the following table, the Percentiles column shows the percent Ramachandran outliers of the chain as a percentile score with respect to all X-ray entries followed by that with respect to entries of similar resolution.

The Analysed column shows the number of residues for which the backbone conformation was analysed, and the total number of residues.

Mol	Chain	Analysed	Favoured	Allowed	Outliers	Percentiles	
1	A	258/311 (83%)	245 (95%)	13 (5%)	0	100	100

Continued on next page...

Continued from previous page...

Mol	Chain	Analysed	Favoured	Allowed	Outliers	Percentiles	
1	B	271/311 (87%)	258 (95%)	13 (5%)	0	100	100
1	C	258/311 (83%)	245 (95%)	12 (5%)	1 (0%)	39	74
1	D	276/311 (89%)	265 (96%)	11 (4%)	0	100	100
All	All	1063/1244 (86%)	1013 (95%)	49 (5%)	1 (0%)	56	87

All (1) Ramachandran outliers are listed below:

Mol	Chain	Res	Type
1	C	122	ILE

5.3.2 Protein sidechains ⓘ

In the following table, the Percentiles column shows the percent sidechain outliers of the chain as a percentile score with respect to all X-ray entries followed by that with respect to entries of similar resolution.

The Analysed column shows the number of residues for which the sidechain conformation was analysed, and the total number of residues.

Mol	Chain	Analysed	Rotameric	Outliers	Percentiles	
1	A	230/274 (84%)	219 (95%)	11 (5%)	31	67
1	B	243/274 (89%)	228 (94%)	15 (6%)	23	55
1	C	231/274 (84%)	216 (94%)	15 (6%)	21	52
1	D	246/274 (90%)	226 (92%)	20 (8%)	15	39
All	All	950/1096 (87%)	889 (94%)	61 (6%)	22	53

All (61) residues with a non-rotameric sidechain are listed below:

Mol	Chain	Res	Type
1	A	26	ASP
1	A	30	ARG
1	A	39	THR
1	A	56	ARG
1	A	84	THR
1	A	204	SER
1	A	248	ASN
1	A	249	HIS
1	A	255	VAL
1	A	280	LYS

Continued on next page...

Continued from previous page...

Mol	Chain	Res	Type
1	A	283	ASP
1	B	16	THR
1	B	33	VAL
1	B	36	ARG
1	B	37	ASP
1	B	45	SER
1	B	46	LEU
1	B	68	PHE
1	B	99	ILE
1	B	142	LEU
1	B	161	GLU
1	B	175	ILE
1	B	251	ASP
1	B	253	LEU
1	B	262	LYS
1	B	266	CYS
1	C	30	ARG
1	C	50	GLN
1	C	68	PHE
1	C	84	THR
1	C	86	SER
1	C	123	TYR
1	C	150	GLN
1	C	161	GLU
1	C	184	HIS
1	C	186	LEU
1	C	209	LEU
1	C	214	ASN
1	C	223	TYR
1	C	257	LEU
1	C	282	ASP
1	D	16	THR
1	D	41	ILE
1	D	44	LEU
1	D	68	PHE
1	D	89	LEU
1	D	103	SER
1	D	114	ARG
1	D	116	THR
1	D	129	HIS
1	D	133	GLU
1	D	143	GLN

Continued on next page...

Continued from previous page...

Mol	Chain	Res	Type
1	D	152	VAL
1	D	161	GLU
1	D	163	ARG
1	D	203	ARG
1	D	264	PHE
1	D	266	CYS
1	D	274	THR
1	D	282	ASP
1	D	290	ASN

Some sidechains can be flipped to improve hydrogen bonding and reduce clashes. All (1) such sidechains are listed below:

Mol	Chain	Res	Type
1	D	256	GLN

5.3.3 RNA [i](#)

There are no RNA molecules in this entry.

5.4 Non-standard residues in protein, DNA, RNA chains [i](#)

There are no non-standard protein/DNA/RNA residues in this entry.

5.5 Carbohydrates [i](#)

There are no carbohydrates in this entry.

5.6 Ligand geometry [i](#)

4 ligands are modelled in this entry.

In the following table, the Counts columns list the number of bonds (or angles) for which Mogul statistics could be retrieved, the number of bonds (or angles) that are observed in the model and the number of bonds (or angles) that are defined in the chemical component dictionary. The Link column lists molecule types, if any, to which the group is linked. The Z score for a bond length (or angle) is the number of standard deviations the observed value is removed from the expected value. A bond length (or angle) with $|Z| > 2$ is considered an outlier worth inspection. RMSZ is the root-mean-square of all Z scores of the bond lengths (or angles).

Mol	Type	Chain	Res	Link	Bond lengths			Bond angles		
					Counts	RMSZ	# Z > 2	Counts	RMSZ	# Z > 2
2	UMP	A	1001	-	17,21,21	3.80	8 (47%)	23,31,31	1.52	1 (4%)
2	UMP	B	1001	-	17,21,21	3.83	9 (52%)	23,31,31	1.56	1 (4%)
2	UMP	C	1001	-	17,21,21	3.82	8 (47%)	23,31,31	1.44	1 (4%)
2	UMP	D	1001	-	17,21,21	3.82	9 (52%)	23,31,31	1.49	1 (4%)

In the following table, the Chirals column lists the number of chiral outliers, the number of chiral centers analysed, the number of these observed in the model and the number defined in the chemical component dictionary. Similar counts are reported in the Torsion and Rings columns. '-' means no outliers of that kind were identified.

Mol	Type	Chain	Res	Link	Chirals	Torsions	Rings
2	UMP	A	1001	-	-	0/6/22/22	0/2/2/2
2	UMP	B	1001	-	-	0/6/22/22	0/2/2/2
2	UMP	C	1001	-	-	0/6/22/22	0/2/2/2
2	UMP	D	1001	-	-	0/6/22/22	0/2/2/2

All (34) bond length outliers are listed below:

Mol	Chain	Res	Type	Atoms	Z	Observed(Å)	Ideal(Å)
2	D	1001	UMP	C3'-C4'	-6.62	1.34	1.53
2	B	1001	UMP	C3'-C4'	-6.62	1.34	1.53
2	A	1001	UMP	C3'-C4'	-6.56	1.34	1.53
2	C	1001	UMP	C3'-C4'	-6.51	1.34	1.53
2	A	1001	UMP	O4'-C1'	-6.28	1.27	1.42
2	B	1001	UMP	O4'-C1'	-6.17	1.28	1.42
2	C	1001	UMP	O4'-C1'	-6.13	1.28	1.42
2	D	1001	UMP	O4'-C1'	-5.98	1.28	1.42
2	B	1001	UMP	C2'-C1'	2.03	1.58	1.52
2	D	1001	UMP	C2'-C1'	2.06	1.58	1.52
2	B	1001	UMP	O3'-C3'	3.03	1.50	1.43
2	A	1001	UMP	O3'-C3'	3.20	1.50	1.43
2	D	1001	UMP	O3'-C3'	3.22	1.50	1.43
2	C	1001	UMP	O3'-C3'	3.26	1.50	1.43
2	A	1001	UMP	C6-C5	4.06	1.46	1.38
2	C	1001	UMP	C6-C5	4.21	1.47	1.38
2	B	1001	UMP	C6-C5	4.22	1.47	1.38
2	D	1001	UMP	C6-C5	4.26	1.47	1.38
2	C	1001	UMP	C2-N3	4.76	1.48	1.38
2	A	1001	UMP	C6-N1	4.80	1.42	1.35
2	A	1001	UMP	C2-N3	4.80	1.48	1.38
2	D	1001	UMP	C6-N1	4.81	1.42	1.35

Continued on next page...

Continued from previous page...

Mol	Chain	Res	Type	Atoms	Z	Observed(Å)	Ideal(Å)
2	B	1001	UMP	C2-N3	4.83	1.48	1.38
2	D	1001	UMP	C2-N3	4.87	1.48	1.38
2	C	1001	UMP	C6-N1	5.05	1.42	1.35
2	B	1001	UMP	C6-N1	5.17	1.42	1.35
2	C	1001	UMP	C4-N3	5.73	1.43	1.33
2	D	1001	UMP	C4-N3	5.73	1.43	1.33
2	A	1001	UMP	C4-N3	5.84	1.43	1.33
2	B	1001	UMP	C4-N3	5.91	1.43	1.33
2	B	1001	UMP	O4'-C4'	6.95	1.60	1.45
2	A	1001	UMP	O4'-C4'	7.04	1.61	1.45
2	C	1001	UMP	O4'-C4'	7.04	1.61	1.45
2	D	1001	UMP	O4'-C4'	7.13	1.61	1.45

All (4) bond angle outliers are listed below:

Mol	Chain	Res	Type	Atoms	Z	Observed(°)	Ideal(°)
2	C	1001	UMP	C4-N3-C2	5.52	120.02	114.21
2	D	1001	UMP	C4-N3-C2	5.98	120.51	114.21
2	A	1001	UMP	C4-N3-C2	6.06	120.60	114.21
2	B	1001	UMP	C4-N3-C2	6.31	120.86	114.21

There are no chirality outliers.

There are no torsion outliers.

There are no ring outliers.

4 monomers are involved in 29 short contacts:

Mol	Chain	Res	Type	Clashes	Symm-Clashes
2	A	1001	UMP	7	0
2	B	1001	UMP	5	0
2	C	1001	UMP	10	0
2	D	1001	UMP	7	0

5.7 Other polymers [i](#)

There are no such residues in this entry.

5.8 Polymer linkage issues [i](#)

There are no chain breaks in this entry.

6 Fit of model and data [i](#)

6.1 Protein, DNA and RNA chains [i](#)

In the following table, the column labelled ‘#RSRZ> 2’ contains the number (and percentage) of RSRZ outliers, followed by percent RSRZ outliers for the chain as percentile scores relative to all X-ray entries and entries of similar resolution. The OWAB column contains the minimum, median, 95th percentile and maximum values of the occupancy-weighted average B-factor per residue. The column labelled ‘Q< 0.9’ lists the number of (and percentage) of residues with an average occupancy less than 0.9.

Mol	Chain	Analysed	<RSRZ>	#RSRZ>2	OWAB(Å ²)	Q<0.9
1	A	262/311 (84%)	-0.13	0 100 100	25, 47, 70, 88	0
1	B	277/311 (89%)	-0.19	0 100 100	23, 44, 66, 99	0
1	C	262/311 (84%)	-0.23	0 100 100	26, 45, 62, 78	0
1	D	280/311 (90%)	-0.20	0 100 100	23, 48, 69, 84	0
All	All	1081/1244 (86%)	-0.19	0 100 100	23, 46, 67, 99	0

There are no RSRZ outliers to report.

6.2 Non-standard residues in protein, DNA, RNA chains [i](#)

There are no non-standard protein/DNA/RNA residues in this entry.

6.3 Carbohydrates [i](#)

There are no carbohydrates in this entry.

6.4 Ligands [i](#)

In the following table, the Atoms column lists the number of modelled atoms in the group and the number defined in the chemical component dictionary. LLDF column lists the quality of electron density of the group with respect to its neighbouring residues in protein, DNA or RNA chains. The B-factors column lists the minimum, median, 95th percentile and maximum values of B factors of atoms in the group. The column labelled ‘Q< 0.9’ lists the number of atoms with occupancy less than 0.9.

Mol	Type	Chain	Res	Atoms	RSCC	RSR	LLDF	B-factors(Å ²)	Q<0.9
2	UMP	A	1001	20/20	0.97	0.19	0.39	36,50,73,82	0
2	UMP	B	1001	20/20	0.95	0.16	-0.65	51,64,76,78	0

Continued on next page...

Continued from previous page...

Mol	Type	Chain	Res	Atoms	RSCC	RSR	LLDF	B-factors(\AA^2)	Q<0.9
2	UMP	C	1001	20/20	0.98	0.15	-0.96	28,38,66,81	0
2	UMP	D	1001	20/20	0.98	0.15	-1.06	46,62,83,92	0

6.5 Other polymers [i](#)

There are no such residues in this entry.