



# Full wwPDB X-ray Structure Validation Report ⓘ

Jan 31, 2016 – 11:34 PM GMT

PDB ID : 1XV5  
Title : alpha-glucosyltransferase (AGT) in complex with UDP  
Authors : Lariviere, L.; Sommer, N.; Morera, S.  
Deposited on : 2004-10-27  
Resolution : 1.73 Å(reported)

This is a Full wwPDB X-ray Structure Validation Report for a publicly released PDB entry.  
We welcome your comments at [validation@mail.wwpdb.org](mailto:validation@mail.wwpdb.org)  
A user guide is available at  
<http://wwpdb.org/validation/2016/XrayValidationReportHelp>  
with specific help available everywhere you see the ⓘ symbol.

---

The following versions of software and data (see [references ⓘ](#)) were used in the production of this report:

MolProbity : 4.02b-467  
Mogul : 1.7 (RC4), CSD as536be (2015)  
Xtriage (Phenix) : 1.9-1692  
EDS : rb-20026688  
Percentile statistics : 20151230.v01 (using entries in the PDB archive December 30th 2015)  
Refmac : 5.8.0135  
CCP4 : 6.5.0  
Ideal geometry (proteins) : Engh & Huber (2001)  
Ideal geometry (DNA, RNA) : Parkinson et al. (1996)  
Validation Pipeline (wwPDB-VP) : trunk26865

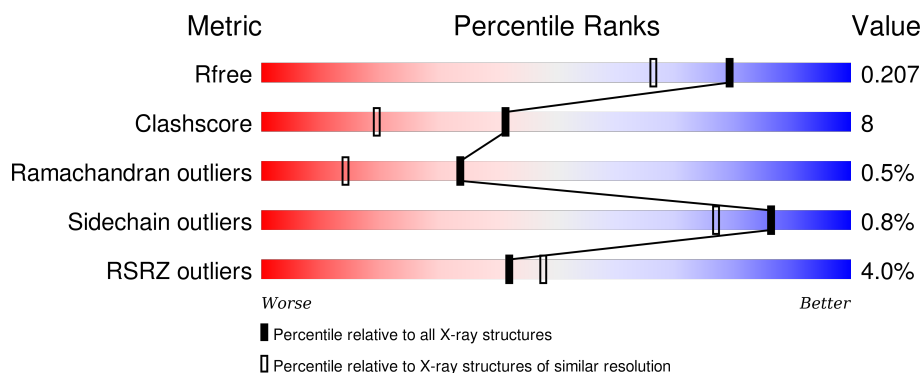
# 1 Overall quality at a glance

The following experimental techniques were used to determine the structure:

## *X-RAY DIFFRACTION*

The reported resolution of this entry is 1.73 Å.

Percentile scores (ranging between 0-100) for global validation metrics of the entry are shown in the following graphic. The table shows the number of entries on which the scores are based.



Metric	Whole archive (#Entries)	Similar resolution (#Entries, resolution range(Å))
$R_{free}$	91344	2417 (1.76-1.72)
Clashscore	102246	2570 (1.76-1.72)
Ramachandran outliers	100387	2544 (1.76-1.72)
Sidechain outliers	100360	2544 (1.76-1.72)
RSRZ outliers	91569	2420 (1.76-1.72)

The table below summarises the geometric issues observed across the polymeric chains and their fit to the electron density. The red, orange, yellow and green segments on the lower bar indicate the fraction of residues that contain outliers for  $\geq 3$ , 2, 1 and 0 types of geometric quality criteria. A grey segment represents the fraction of residues that are not modelled. The numeric value for each fraction is indicated below the corresponding segment, with a dot representing fractions  $\leq 5\%$ . The upper red bar (where present) indicates the fraction of residues that have poor fit to the electron density. The numeric value is given above the bar.

Mol	Chain	Length	Quality of chain
1	A	401	<div> <div>4%</div> <div>82%</div> <div>17%</div> </div>

The following table lists non-polymeric compounds, carbohydrate monomers and non-standard residues in protein, DNA, RNA chains that are outliers for geometric or electron-density-fit criteria:

Mol	Type	Chain	Res	Chirality	Geometry	Clashes	Electron density
2	CL	A	1401	-	-	X	-

*Continued on next page...*

*Continued from previous page...*

Mol	Type	Chain	Res	Chirality	Geometry	Clashes	Electron density
5	GOL	A	2002	-	X	-	-
5	GOL	A	2003	-	X	-	X

## 2 Entry composition

There are 6 unique types of molecules in this entry. The entry contains 3799 atoms, of which 0 are hydrogens and 0 are deuteriums.

In the tables below, the ZeroOcc column contains the number of atoms modelled with zero occupancy, the AltConf column contains the number of residues with at least one atom in alternate conformation and the Trace column contains the number of residues modelled with at most 2 atoms.

- Molecule 1 is a protein called DNA alpha-glucosyltransferase.

Mol	Chain	Residues	Atoms					ZeroOcc	AltConf	Trace
1	A	401	Total	C	N	O	S	0	0	0
			3305	2107	556	623	19			

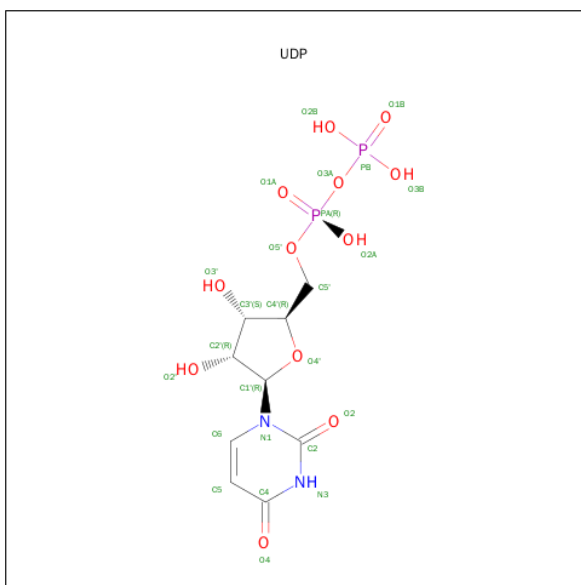
There are 3 discrepancies between the modelled and reference sequences:

Chain	Residue	Modelled	Actual	Comment	Reference
A	1000	SER	-	CLONING ARTIFACT	UNP P04519
A	1014	CME	CYS	MODIFIED RESIDUE	UNP P04519
A	1274	CME	CYS	MODIFIED RESIDUE	UNP P04519

- Molecule 2 is CHLORIDE ION (three-letter code: CL) (formula: Cl).

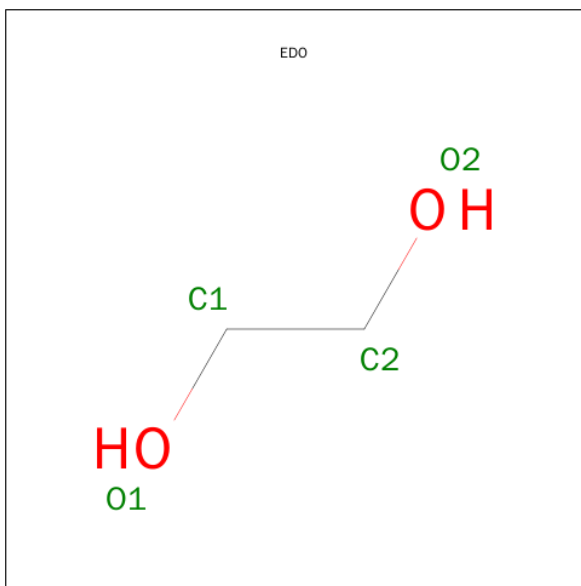
Mol	Chain	Residues	Atoms		ZeroOcc	AltConf
2	A	1	Total	Cl	0	0
			1	1		

- Molecule 3 is URIDINE-5'-DIPHOSPHATE (three-letter code: UDP) (formula: C<sub>9</sub>H<sub>14</sub>N<sub>2</sub>O<sub>12</sub>P<sub>2</sub>).



Mol	Chain	Residues	Atoms					ZeroOcc	AltConf
3	A	1	Total	C	N	O	P	0	0
			25	9	2	12	2		

- Molecule 4 is 1,2-ETHANEDIOL (three-letter code: EDO) (formula:  $\text{C}_2\text{H}_6\text{O}_2$ ).



Mol	Chain	Residues	Atoms	ZeroOcc	AltConf
4	A	1	Total C O 4 2 2	0	0
4	A	1	Total C O 4 2 2	0	0
4	A	1	Total C O 4 2 2	0	0

- Molecule 5 is GLYCEROL (three-letter code: GOL) (formula:  $C_3H_8O_3$ ).



Mol	Chain	Residues	Atoms			ZeroOcc	AltConf
5	A	1	Total	C	O	0	0
			6	3	3		
5	A	1	Total	C	O	0	0
			6	3	3		

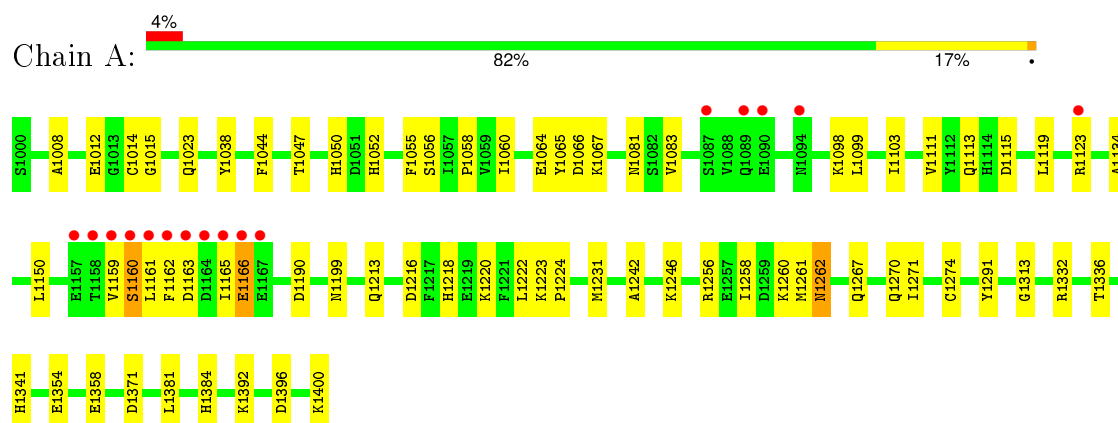
- Molecule 6 is water.

Mol	Chain	Residues	Atoms		ZeroOcc	AltConf
6	A	444	Total	O	0	0
			444	444		

### 3 Residue-property plots

These plots are drawn for all protein, RNA and DNA chains in the entry. The first graphic for a chain summarises the proportions of errors displayed in the second graphic. The second graphic shows the sequence view annotated by issues in geometry and electron density. Residues are color-coded according to the number of geometric quality criteria for which they contain at least one outlier: green = 0, yellow = 1, orange = 2 and red = 3 or more. A red dot above a residue indicates a poor fit to the electron density ( $RSRZ > 2$ ). Stretches of 2 or more consecutive residues without any outlier are shown as a green connector. Residues present in the sample, but not in the model, are shown in grey.

- Molecule 1: DNA alpha-glucosyltransferase



## 4 Data and refinement statistics

Property	Value	Source
Space group	P 1 21 1	Depositor
Cell constants a, b, c, $\alpha$ , $\beta$ , $\gamma$	47.81Å 68.24Å 65.75Å 90.00° 109.10° 90.00°	Depositor
Resolution (Å)	20.00 – 1.73 19.82 – 1.73	Depositor EDS
% Data completeness (in resolution range)	99.7 (20.00-1.73) 99.7 (19.82-1.73)	Depositor EDS
$R_{merge}$	(Not available)	Depositor
$R_{sym}$	0.09	Depositor
$\langle I/\sigma(I) \rangle$ <sup>1</sup>	1.91 (at 1.73Å)	Xtriage
Refinement program	CNS 1.0	Depositor
R, $R_{free}$	0.175 , 0.205 0.174 , 0.207	Depositor DCC
$R_{free}$ test set	2088 reflections (5.02%)	DCC
Wilson B-factor (Å <sup>2</sup> )	17.8	Xtriage
Anisotropy	0.271	Xtriage
Bulk solvent $k_{sol}$ (e/Å <sup>3</sup> ), $B_{sol}$ (Å <sup>2</sup> )	0.37 , 52.5	EDS
Estimated twinning fraction	0.020 for h,-k,-h-l	Xtriage
L-test for twinning <sup>2</sup>	$\langle  L  \rangle = 0.50$ , $\langle L^2 \rangle = 0.34$	Xtriage
Outliers	0 of 41602 reflections	Xtriage
$F_o, F_c$ correlation	0.96	EDS
Total number of atoms	3799	wwPDB-VP
Average B, all atoms (Å <sup>2</sup> )	23.0	wwPDB-VP

Xtriage's analysis on translational NCS is as follows: *The largest off-origin peak in the Patterson function is 7.21% of the height of the origin peak. No significant pseudotranslation is detected.*

<sup>1</sup>Intensities estimated from amplitudes.

<sup>2</sup>Theoretical values of  $\langle |L| \rangle$ ,  $\langle L^2 \rangle$  for acentric reflections are 0.5, 0.375 respectively for untwinned datasets, and 0.333, 0.2 for perfectly twinned datasets.



## 5 Model quality

### 5.1 Standard geometry

Bond lengths and bond angles in the following residue types are not validated in this section: GOL, UDP, EDO, CME, CL

The Z score for a bond length (or angle) is the number of standard deviations the observed value is removed from the expected value. A bond length (or angle) with  $|Z| > 5$  is considered an outlier worth inspection. RMSZ is the root-mean-square of all Z scores of the bond lengths (or angles).

Mol	Chain	Bond lengths		Bond angles	
		RMSZ	$\# Z  > 5$	RMSZ	$\# Z  > 5$
1	A	0.31	0/3361	0.59	0/4532

There are no bond length outliers.

There are no bond angle outliers.

There are no chirality outliers.

There are no planarity outliers.

### 5.2 Too-close contacts

In the following table, the Non-H and H(model) columns list the number of non-hydrogen atoms and hydrogen atoms in the chain respectively. The H(added) column lists the number of hydrogen atoms added and optimized by MolProbity. The Clashes column lists the number of clashes within the asymmetric unit, whereas Symm-Clashes lists symmetry related clashes.

Mol	Chain	Non-H	H(model)	H(added)	Clashes	Symm-Clashes
1	A	3305	0	3234	56	0
2	A	1	0	0	2	0
3	A	25	0	11	1	0
4	A	12	0	18	2	0
5	A	12	0	8	0	0
6	A	444	0	0	6	0
All	All	3799	0	3271	56	0

The all-atom clashscore is defined as the number of clashes found per 1000 atoms (including hydrogen atoms). The all-atom clashscore for this structure is 8.

All (56) close contacts within the same asymmetric unit are listed below, sorted by their clash magnitude.

Atom-1	Atom-2	Interatomic distance (Å)	Clash overlap (Å)
1:A:1165:ILE:HD12	1:A:1166:GLU:H	1.39	0.84
1:A:1159:VAL:HG11	1:A:1165:ILE:HA	1.60	0.81
1:A:1332:ARG:HH12	4:A:1405:EDO:H22	1.48	0.79
1:A:1113:GLN:HE21	1:A:1115:ASP:H	1.27	0.79
1:A:1332:ARG:H	1:A:1384:HIS:HD2	1.31	0.75
1:A:1165:ILE:HD12	1:A:1166:GLU:N	2.02	0.75
1:A:1231:MET:HB2	1:A:1271:ILE:HD12	1.76	0.67
1:A:1332:ARG:H	1:A:1384:HIS:CD2	2.15	0.62
1:A:1159:VAL:HB	1:A:1163:ASP:OD2	2.00	0.62
1:A:1099:LEU:O	1:A:1103:ILE:HG13	1.99	0.62
1:A:1065:TYR:CZ	1:A:1098:LYS:HD2	2.38	0.59
1:A:1012:GLU:HG2	1:A:1014:CME:SD	2.43	0.59
1:A:1392:LYS:HE2	1:A:1396:ASP:OD1	2.04	0.57
1:A:1015:GLY:HA3	3:A:1402:UDP:O3B	2.06	0.56
1:A:1023:GLN:HE22	1:A:1081:ASN:HD21	1.52	0.56
1:A:1262:ASN:H	1:A:1270:GLN:NE2	2.05	0.55
1:A:1161:LEU:HD22	1:A:1162:PHE:CD1	2.42	0.54
1:A:1065:TYR:CE2	1:A:1098:LYS:HD2	2.42	0.54
1:A:1231:MET:HB2	1:A:1271:ILE:CD1	2.38	0.53
1:A:1047:THR:O	1:A:1052:HIS:HE1	1.92	0.53
1:A:1313:GLY:HA3	1:A:1381:LEU:HD12	1.91	0.52
1:A:1052:HIS:HD2	1:A:1056:SER:OG	1.92	0.52
1:A:1012:GLU:HG3	1:A:1044:PHE:CD2	2.45	0.52
1:A:1050:HIS:HD2	6:A:39:HOH:O	1.93	0.51
1:A:1242:ALA:O	1:A:1246:LYS:HG3	2.11	0.51
1:A:1354:GLU:O	1:A:1358:GLU:HG2	2.13	0.49
1:A:1113:GLN:NE2	1:A:1115:ASP:H	2.05	0.48
1:A:1258:ILE:HG13	1:A:1261:MET:CE	2.42	0.48
1:A:1218:HIS:HA	1:A:1222:LEU:HB2	1.95	0.48
1:A:1160:SER:HB3	1:A:1163:ASP:OD1	2.14	0.47
1:A:1123:ARG:HH21	1:A:1123:ARG:HG2	1.79	0.47
1:A:1012:GLU:HB3	2:A:1401:CL:CL	2.53	0.45
1:A:1216:ASP:OD2	1:A:1220:LYS:HE3	2.16	0.45
1:A:1223:LYS:HB3	1:A:1224:PRO:HD3	1.97	0.45
1:A:1111:VAL:CG2	1:A:1134:ALA:HB2	2.47	0.45
1:A:1199:ASN:HB3	1:A:1291:TYR:CE2	2.52	0.45
1:A:1260:LYS:NZ	6:A:377:HOH:O	2.49	0.44
1:A:1052:HIS:HA	1:A:1055:PHE:CZ	2.53	0.44
1:A:1258:ILE:HG13	1:A:1261:MET:HE1	2.00	0.44
1:A:1213:GLN:H	1:A:1213:GLN:NE2	2.16	0.43
1:A:1256:ARG:NH2	6:A:129:HOH:O	2.50	0.42
1:A:1336:THR:OG1	1:A:1341:HIS:HE1	2.01	0.42

Continued on next page...

*Continued from previous page...*

Atom-1	Atom-2	Interatomic distance (Å)	Clash overlap (Å)
1:A:1014:CME:N	2:A:1401:CL:CL	2.89	0.42
1:A:1190:ASP:HB2	6:A:443:HOH:O	2.19	0.42
1:A:1332:ARG:NH1	4:A:1405:EDO:H22	2.26	0.41
1:A:1038:TYR:CZ	1:A:1058:PRO:HB3	2.55	0.41
1:A:1023:GLN:NE2	1:A:1081:ASN:HD21	2.17	0.41
1:A:1150:LEU:HD12	1:A:1150:LEU:N	2.35	0.41
1:A:1067:LYS:HE2	6:A:423:HOH:O	2.20	0.41
1:A:1008:ALA:HB3	1:A:1083:VAL:HA	2.02	0.41
1:A:1119:LEU:HD23	1:A:1119:LEU:C	2.40	0.41
1:A:1274:CME:HB3	6:A:382:HOH:O	2.20	0.41
1:A:1161:LEU:HD23	1:A:1161:LEU:O	2.20	0.41
1:A:1218:HIS:HE1	1:A:1267:GLN:O	2.04	0.41
1:A:1060:ILE:O	1:A:1064:GLU:N	2.51	0.41
1:A:1400:LYS:OXT	1:A:1400:LYS:HG2	2.21	0.40

There are no symmetry-related clashes.

## 5.3 Torsion angles [i](#)

### 5.3.1 Protein backbone [i](#)

In the following table, the Percentiles column shows the percent Ramachandran outliers of the chain as a percentile score with respect to all X-ray entries followed by that with respect to entries of similar resolution.

The Analysed column shows the number of residues for which the backbone conformation was analysed, and the total number of residues.

Mol	Chain	Analysed	Favoured	Allowed	Outliers	Percentiles
1	A	397/401 (99%)	380 (96%)	15 (4%)	2 (0%)	34 14

All (2) Ramachandran outliers are listed below:

Mol	Chain	Res	Type
1	A	1160	SER
1	A	1166	GLU

### 5.3.2 Protein sidechains ⓘ

In the following table, the Percentiles column shows the percent sidechain outliers of the chain as a percentile score with respect to all X-ray entries followed by that with respect to entries of similar resolution.

The Analysed column shows the number of residues for which the sidechain conformation was analysed, and the total number of residues.

Mol	Chain	Analysed	Rotameric	Outliers	Percentiles	
1	A	365/365 (100%)	362 (99%)	3 (1%)	86	77

All (3) residues with a non-rotameric sidechain are listed below:

Mol	Chain	Res	Type
1	A	1066	ASP
1	A	1262	ASN
1	A	1371	ASP

Some sidechains can be flipped to improve hydrogen bonding and reduce clashes. All (21) such sidechains are listed below:

Mol	Chain	Res	Type
1	A	1023	GLN
1	A	1030	ASN
1	A	1050	HIS
1	A	1052	HIS
1	A	1094	ASN
1	A	1102	ASN
1	A	1113	GLN
1	A	1124	ASN
1	A	1175	GLN
1	A	1199	ASN
1	A	1213	GLN
1	A	1218	HIS
1	A	1262	ASN
1	A	1267	GLN
1	A	1270	GLN
1	A	1328	ASN
1	A	1341	HIS
1	A	1351	ASN
1	A	1383	GLN
1	A	1384	HIS
1	A	1394	GLN

### 5.3.3 RNA ⓘ

There are no RNA molecules in this entry.

## 5.4 Non-standard residues in protein, DNA, RNA chains ⓘ

2 non-standard protein/DNA/RNA residues are modelled in this entry.

In the following table, the Counts columns list the number of bonds (or angles) for which Mogul statistics could be retrieved, the number of bonds (or angles) that are observed in the model and the number of bonds (or angles) that are defined in the chemical component dictionary. The Link column lists molecule types, if any, to which the group is linked. The Z score for a bond length (or angle) is the number of standard deviations the observed value is removed from the expected value. A bond length (or angle) with  $|Z| > 2$  is considered an outlier worth inspection. RMSZ is the root-mean-square of all Z scores of the bond lengths (or angles).

Mol	Type	Chain	Res	Link	Bond lengths			Bond angles		
					Counts	RMSZ	$\# Z  > 2$	Counts	RMSZ	$\# Z  > 2$
1	CME	A	1014	1	8,9,10	1.00	1 (12%)	6,9,11	1.01	1 (16%)
1	CME	A	1274	1	8,9,10	1.01	1 (12%)	6,9,11	0.94	1 (16%)

In the following table, the Chirals column lists the number of chiral outliers, the number of chiral centers analysed, the number of these observed in the model and the number defined in the chemical component dictionary. Similar counts are reported in the Torsion and Rings columns. '-' means no outliers of that kind were identified.

Mol	Type	Chain	Res	Link	Chirals	Torsions	Rings
1	CME	A	1014	1	-	0/5/8/10	0/0/0/0
1	CME	A	1274	1	-	0/5/8/10	0/0/0/0

All (2) bond length outliers are listed below:

Mol	Chain	Res	Type	Atoms	Z	Observed(Å)	Ideal(Å)
1	A	1274	CME	OH-CZ	-2.63	1.27	1.42
1	A	1014	CME	OH-CZ	-2.62	1.27	1.42

All (2) bond angle outliers are listed below:

Mol	Chain	Res	Type	Atoms	Z	Observed(°)	Ideal(°)
1	A	1014	CME	O-C-CA	-2.13	119.93	125.49
1	A	1274	CME	O-C-CA	-2.02	120.24	125.49

There are no chirality outliers.

There are no torsion outliers.

There are no ring outliers.

2 monomers are involved in 3 short contacts:

Mol	Chain	Res	Type	Clashes	Symm-Clashes
1	A	1014	CME	2	0
1	A	1274	CME	1	0

## 5.5 Carbohydrates [i](#)

There are no carbohydrates in this entry.

## 5.6 Ligand geometry [i](#)

Of 7 ligands modelled in this entry, 1 is monoatomic - leaving 6 for Mogul analysis.

In the following table, the Counts columns list the number of bonds (or angles) for which Mogul statistics could be retrieved, the number of bonds (or angles) that are observed in the model and the number of bonds (or angles) that are defined in the chemical component dictionary. The Link column lists molecule types, if any, to which the group is linked. The Z score for a bond length (or angle) is the number of standard deviations the observed value is removed from the expected value. A bond length (or angle) with  $|Z| > 2$  is considered an outlier worth inspection. RMSZ is the root-mean-square of all Z scores of the bond lengths (or angles).

Mol	Type	Chain	Res	Link	Bond lengths			Bond angles		
					Counts	RMSZ	$\# Z  > 2$	Counts	RMSZ	$\# Z  > 2$
3	UDP	A	1402	-	18,26,26	1.14	1 (5%)	26,40,40	2.72	3 (11%)
4	EDO	A	1403	-	3,3,3	0.59	0	2,2,2	0.11	0
4	EDO	A	1404	-	3,3,3	0.57	0	2,2,2	0.11	0
4	EDO	A	1405	-	3,3,3	0.58	0	2,2,2	0.09	0
5	GOL	A	2002	-	5,5,5	4.44	5 (100%)	5,5,5	2.04	2 (40%)
5	GOL	A	2003	-	5,5,5	4.54	5 (100%)	5,5,5	2.04	2 (40%)

In the following table, the Chirals column lists the number of chiral outliers, the number of chiral centers analysed, the number of these observed in the model and the number defined in the chemical component dictionary. Similar counts are reported in the Torsion and Rings columns. '-' means no outliers of that kind were identified.

Mol	Type	Chain	Res	Link	Chirals	Torsions	Rings
3	UDP	A	1402	-	-	0/12/32/32	0/2/2/2
4	EDO	A	1403	-	-	0/1/1/1	0/0/0/0
4	EDO	A	1404	-	-	0/1/1/1	0/0/0/0

*Continued on next page...*

*Continued from previous page...*

Mol	Type	Chain	Res	Link	Chirals	Torsions	Rings
4	EDO	A	1405	-	-	0/1/1/1	0/0/0/0
5	GOL	A	2002	-	-	0/4/4/4	0/0/0/0
5	GOL	A	2003	-	-	0/4/4/4	0/0/0/0

All (11) bond length outliers are listed below:

Mol	Chain	Res	Type	Atoms	Z	Observed(Å)	Ideal(Å)
5	A	2003	GOL	C3-C2	-5.75	1.30	1.52
5	A	2003	GOL	C1-C2	-5.74	1.30	1.52
5	A	2002	GOL	C3-C2	-5.74	1.30	1.52
5	A	2002	GOL	C1-C2	-5.56	1.31	1.52
5	A	2002	GOL	O2-C2	-2.83	1.35	1.43
5	A	2003	GOL	O2-C2	-2.82	1.35	1.43
3	A	1402	UDP	C4-N3	3.03	1.38	1.33
5	A	2002	GOL	O1-C1	3.57	1.57	1.42
5	A	2002	GOL	O3-C3	3.72	1.58	1.42
5	A	2003	GOL	O3-C3	3.81	1.58	1.42
5	A	2003	GOL	O1-C1	3.81	1.58	1.42

All (7) bond angle outliers are listed below:

Mol	Chain	Res	Type	Atoms	Z	Observed(°)	Ideal(°)
3	A	1402	UDP	C5-C4-N3	-3.28	114.71	123.12
3	A	1402	UDP	O2B-PB-O1B	2.67	119.19	110.58
5	A	2002	GOL	O3-C3-C2	3.07	125.08	110.18
5	A	2003	GOL	O1-C1-C2	3.16	125.51	110.18
5	A	2003	GOL	O3-C3-C2	3.16	125.52	110.18
5	A	2002	GOL	O1-C1-C2	3.24	125.89	110.18
3	A	1402	UDP	C4-N3-C2	12.87	126.89	114.14

There are no chirality outliers.

There are no torsion outliers.

There are no ring outliers.

2 monomers are involved in 3 short contacts:

Mol	Chain	Res	Type	Clashes	Symm-Clashes
3	A	1402	UDP	1	0
4	A	1405	EDO	2	0

## 5.7 Other polymers

There are no such residues in this entry.

## 5.8 Polymer linkage issues

There are no chain breaks in this entry.



## 6 Fit of model and data ⓘ

### 6.1 Protein, DNA and RNA chains ⓘ

In the following table, the column labelled ‘#RSRZ> 2’ contains the number (and percentage) of RSRZ outliers, followed by percent RSRZ outliers for the chain as percentile scores relative to all X-ray entries and entries of similar resolution. The OWAB column contains the minimum, median, 95<sup>th</sup> percentile and maximum values of the occupancy-weighted average B-factor per residue. The column labelled ‘Q< 0.9’ lists the number of (and percentage) of residues with an average occupancy less than 0.9.

Mol	Chain	Analysed	<RSRZ>	#RSRZ>2		OWAB(Å <sup>2</sup> )	Q<0.9
1	A	399/401 (99%)	0.03	16 (4%)	42 48	11, 19, 38, 68	0

All (16) RSRZ outliers are listed below:

Mol	Chain	Res	Type	RSRZ
1	A	1159	VAL	8.4
1	A	1165	ILE	6.9
1	A	1160	SER	6.7
1	A	1162	PHE	6.7
1	A	1163	ASP	5.6
1	A	1161	LEU	4.9
1	A	1166	GLU	3.7
1	A	1158	THR	3.7
1	A	1164	ASP	3.6
1	A	1089	GLN	3.1
1	A	1157	GLU	2.9
1	A	1167	GLU	2.6
1	A	1090	GLU	2.5
1	A	1094	ASN	2.2
1	A	1087	SER	2.1
1	A	1123	ARG	2.0

### 6.2 Non-standard residues in protein, DNA, RNA chains ⓘ

In the following table, the Atoms column lists the number of modelled atoms in the group and the number defined in the chemical component dictionary. LLDF column lists the quality of electron density of the group with respect to its neighbouring residues in protein, DNA or RNA chains. The B-factors column lists the minimum, median, 95<sup>th</sup> percentile and maximum values of B factors of atoms in the group. The column labelled ‘Q< 0.9’ lists the number of atoms with occupancy less than 0.9.

Mol	Type	Chain	Res	Atoms	RSCC	RSR	LLDF	B-factors( $\text{\AA}^2$ )	Q<0.9
1	CME	A	1014	10/11	0.90	0.12	-	15,21,42,43	0
1	CME	A	1274	10/11	0.87	0.15	-	17,24,36,39	0

### 6.3 Carbohydrates [i](#)

There are no carbohydrates in this entry.

### 6.4 Ligands [i](#)

In the following table, the Atoms column lists the number of modelled atoms in the group and the number defined in the chemical component dictionary. LLDF column lists the quality of electron density of the group with respect to its neighbouring residues in protein, DNA or RNA chains. The B-factors column lists the minimum, median, 95<sup>th</sup> percentile and maximum values of B factors of atoms in the group. The column labelled 'Q< 0.9' lists the number of atoms with occupancy less than 0.9.

Mol	Type	Chain	Res	Atoms	RSCC	RSR	LLDF	B-factors( $\text{\AA}^2$ )	Q<0.9
5	GOL	A	2003	6/6	0.48	0.22	3.64	54,55,55,56	0
5	GOL	A	2002	6/6	0.92	0.11	1.97	16,17,19,20	0
4	EDO	A	1404	4/4	0.80	0.13	1.08	46,46,46,46	0
4	EDO	A	1403	4/4	0.86	0.13	0.50	32,34,35,35	0
3	UDP	A	1402	25/25	0.97	0.06	-0.54	11,15,16,17	0
2	CL	A	1401	1/1	0.96	0.09	-	34,34,34,34	0
4	EDO	A	1405	4/4	0.72	0.22	-	39,43,43,46	0

### 6.5 Other polymers [i](#)

There are no such residues in this entry.