



Full wwPDB X-ray Structure Validation Report ⓘ

Feb 1, 2016 – 06:39 AM GMT

PDB ID : 2XW1
Title : HUMAN SERUM ALBUMIN COMPLEXED WITH DANSYL-L-NORVALINE
Authors : Ryan, A.J.; Curry, S.
Deposited on : 2010-10-28
Resolution : 2.50 Å(reported)

This is a Full wwPDB X-ray Structure Validation Report for a publicly released PDB entry.
We welcome your comments at validation@mail.wwpdb.org
A user guide is available at
<http://wwpdb.org/validation/2016/XrayValidationReportHelp>
with specific help available everywhere you see the ⓘ symbol.

The following versions of software and data (see [references ⓘ](#)) were used in the production of this report:

MolProbity : 4.02b-467
Mogul : 1.7 (RC4), CSD as536be (2015)
Xtriage (Phenix) : 1.9-1692
EDS : rb-20026688
Percentile statistics : 20151230.v01 (using entries in the PDB archive December 30th 2015)
Refmac : 5.8.0135
CCP4 : 6.5.0
Ideal geometry (proteins) : Engh & Huber (2001)
Ideal geometry (DNA, RNA) : Parkinson et al. (1996)
Validation Pipeline (wwPDB-VP) : trunk26865

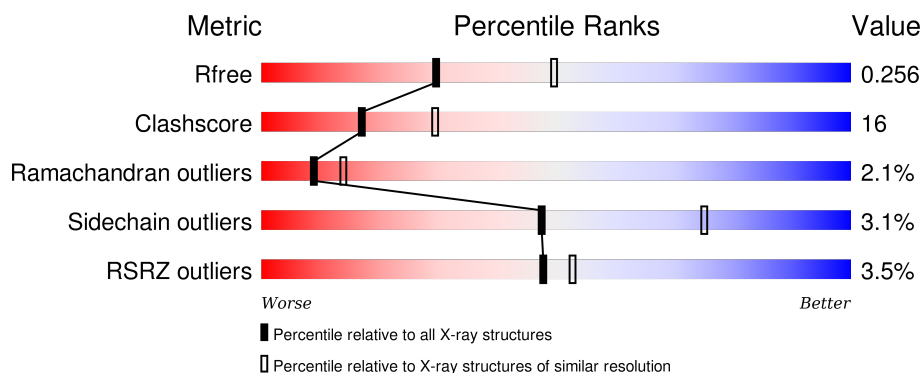
1 Overall quality at a glance

The following experimental techniques were used to determine the structure:

X-RAY DIFFRACTION


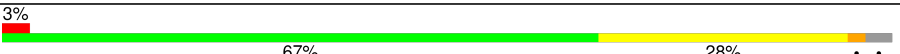
The reported resolution of this entry is 2.50 Å.

Percentile scores (ranging between 0-100) for global validation metrics of the entry are shown in the following graphic. The table shows the number of entries on which the scores are based.



Metric	Whole archive (#Entries)	Similar resolution (#Entries, resolution range(Å))
R_{free}	91344	3553 (2.50-2.50)
Clashscore	102246	4242 (2.50-2.50)
Ramachandran outliers	100387	4156 (2.50-2.50)
Sidechain outliers	100360	4158 (2.50-2.50)
RSRZ outliers	91569	3562 (2.50-2.50)

The table below summarises the geometric issues observed across the polymeric chains and their fit to the electron density. The red, orange, yellow and green segments on the lower bar indicate the fraction of residues that contain outliers for ≥ 3 , 2, 1 and 0 types of geometric quality criteria. A grey segment represents the fraction of residues that are not modelled. The numeric value for each fraction is indicated below the corresponding segment, with a dot representing fractions $\leq 5\%$. The upper red bar (where present) indicates the fraction of residues that have poor fit to the electron density. The numeric value is given above the bar.

Mol	Chain	Length	Quality of chain
1	A	585	 4% 67% 29% . .
1	B	585	 3% 67% 28% . .

2 Entry composition [i](#)

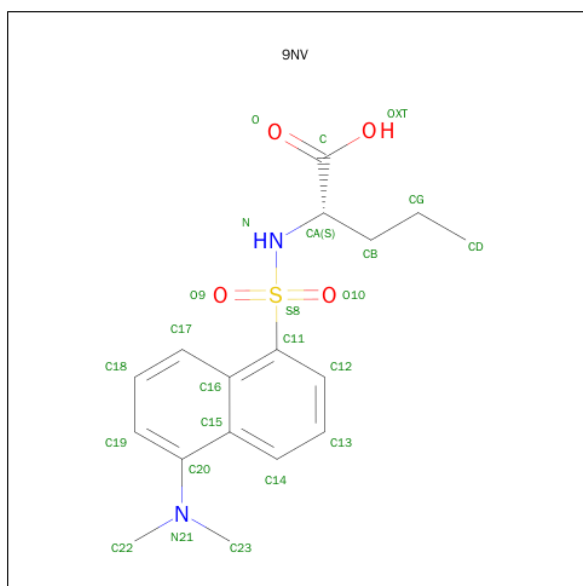
There are 3 unique types of molecules in this entry. The entry contains 8540 atoms, of which 0 are hydrogens and 0 are deuteriums.

In the tables below, the ZeroOcc column contains the number of atoms modelled with zero occupancy, the AltConf column contains the number of residues with at least one atom in alternate conformation and the Trace column contains the number of residues modelled with at most 2 atoms.

- Molecule 1 is a protein called SERUM ALBUMIN.

Mol	Chain	Residues	Atoms					ZeroOcc	AltConf	Trace
1	A	569	Total	C	N	O	S	0	0	0
			4296	2710	726	820	40			
1	B	566	Total	C	N	O	S	0	0	0
			4169	2626	707	796	40			

- Molecule 2 is DANSYL-L-NORVALINE (three-letter code: 9NV) (formula: $C_{17}H_{22}N_2O_4S$).



Mol	Chain	Residues	Atoms					ZeroOcc	AltConf
2	A	1	Total	C	N	O	S	0	0
			22	17	2	2	1		
2	B	1	Total	C	N	O	S	0	0
			22	17	2	2	1		

- Molecule 3 is water.

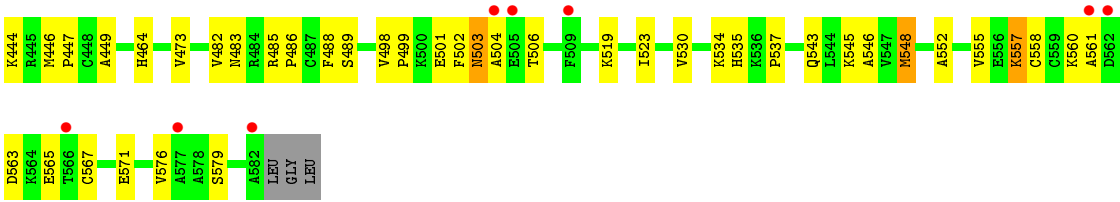
Mol	Chain	Residues	Atoms		ZeroOcc	AltConf
3	A	19	Total 19	O 19	0	0
3	B	12	Total 12	O 12	0	0

These plots are drawn for all protein, RNA and DNA chains in the entry. The first graphic for a chain summarises the proportions of errors displayed in the second graphic. The second graphic shows the sequence view annotated by issues in geometry and electron density. Residues are color-coded according to the number of geometric quality criteria for which they contain at least one outlier: green = 0, yellow = 1, orange = 2 and red = 3 or more. A red dot above a residue indicates a poor fit to the electron density ($\text{RSRZ} > 2$). Stretches of 2 or more consecutive residues without any outlier are shown as a green connector. Residues present in the sample, but not in the model, are shown in grey.

Chain A:

Position	Residue	Information Content (bits)
1	Lysine	1.2
2	Lysine	1.2
3	Lysine	1.2
4	Lysine	1.2
5	Lysine	1.2
6	Lysine	1.2
7	Lysine	1.2
8	Lysine	1.2
9	Lysine	1.2
10	Lysine	1.2
11	Glutamine	1.2
12	Glutamine	1.2
13	Glutamine	1.2
14	Glutamine	1.2
15	Glutamine	1.2
16	Glutamine	1.2
17	Glutamine	1.2
18	Glutamine	1.2
19	Glutamine	1.2
20	Glutamine	1.2
21	Glutamine	1.2
22	Glutamine	1.2
23	Glutamine	1.2
24	Glutamine	1.2
25	Glutamine	1.2
26	Asparagine	1.2
27	Asparagine	1.2
28	Asparagine	1.2
29	Asparagine	1.2
30	Asparagine	1.2
31	Asparagine	1.2
32	Asparagine	1.2
33	Asparagine	1.2
34	Asparagine	1.2
35	Asparagine	1.2
36	Asparagine	1.2
37	Asparagine	1.2
38	Asparagine	1.2
39	Asparagine	1.2
40	Asparagine	1.2
41	Asparagine	1.2
42	Asparagine	1.2
43	Asparagine	1.2
44	Asparagine	1.2
45	Asparagine	1.2
46	Asparagine	1.2
47	Asparagine	1.2
48	Asparagine	1.2
49	Asparagine	1.2
50	Asparagine	1.2
51	Asparagine	1.2
52	Asparagine	1.2
53	Asparagine	1.2
54	Asparagine	1.2
55	Asparagine	1.2
56	Asparagine	1.2
57	Asparagine	1.2
58	Asparagine	1.2
59	Asparagine	1.2
60	Asparagine	1.2
61	Asparagine	1.2
62	Asparagine	1.2
63	Asparagine	1.2
64	Asparagine	1.2
65	Asparagine	1.2
66	Asparagine	1.2
67	Asparagine	1.2
68	Asparagine	1.2
69	Asparagine	1.2
70	Asparagine	1.2
71	Asparagine	1.2
72	Asparagine	1.2
73	Asparagine	1.2
74	Asparagine	1.2
75	Asparagine	1.2
76	Asparagine	1.2
77	Asparagine	1.2
78	Asparagine	1.2
79	Asparagine	1.2
80	Asparagine	1.2
81	Asparagine	1.2
82	Asparagine	1.2
83	Asparagine	1.2
84	Asparagine	1.2
85	Asparagine	1.2
86	Asparagine	1.2
87	Asparagine	1.2
88	Asparagine	1.2
89	Asparagine	1.2
90	Asparagine	1.2
91	Asparagine	1.2
92	Asparagine	1.2
93	Asparagine	1.2
94	Asparagine	1.2
95	Asparagine	1.2
96	Asparagine	1.2
97	Asparagine	1.2
98	Asparagine	1.2
99	Asparagine	1.2
100	Asparagine	1.2

[illegible]



4 Data and refinement statistics

Property	Value	Source
Space group	P 1	Depositor
Cell constants a, b, c, α , β , γ	55.18Å 55.39Å 119.91Å 81.17° 91.76° 64.74°	Depositor
Resolution (Å)	35.29 – 2.50 49.23 – 2.50	Depositor EDS
% Data completeness (in resolution range)	90.9 (35.29-2.50) 85.2 (49.23-2.50)	Depositor EDS
R_{merge}	0.07	Depositor
R_{sym}	(Not available)	Depositor
$\langle I/\sigma(I) \rangle$ ¹	2.81 (at 2.51Å)	Xtriage
Refinement program	CNS 1.2	Depositor
R, R_{free}	0.225 , 0.256 0.225 , 0.256	Depositor DCC
R_{free} test set	1909 reflections (4.81%)	DCC
Wilson B-factor (Å ²)	56.5	Xtriage
Anisotropy	0.344	Xtriage
Bulk solvent k_{sol} (e/Å ³), B_{sol} (Å ²)	0.28 , 57.1	EDS
Estimated twinning fraction	No twinning to report.	Xtriage
L-test for twinning ²	$\langle L \rangle = 0.49$, $\langle L^2 \rangle = 0.32$	Xtriage
Outliers	0 of 43567 reflections	Xtriage
F_o, F_c correlation	0.94	EDS
Total number of atoms	8540	wwPDB-VP
Average B, all atoms (Å ²)	75.0	wwPDB-VP

Xtriage's analysis on translational NCS is as follows: *The largest off-origin peak in the Patterson function is 6.14% of the height of the origin peak. No significant pseudotranslation is detected.*

¹Intensities estimated from amplitudes.

²Theoretical values of $\langle |L| \rangle$, $\langle L^2 \rangle$ for acentric reflections are 0.5, 0.375 respectively for untwinned datasets, and 0.333, 0.2 for perfectly twinned datasets.

5 Model quality

5.1 Standard geometry

Bond lengths and bond angles in the following residue types are not validated in this section: 9NV

The Z score for a bond length (or angle) is the number of standard deviations the observed value is removed from the expected value. A bond length (or angle) with $|Z| > 5$ is considered an outlier worth inspection. RMSZ is the root-mean-square of all Z scores of the bond lengths (or angles).

Mol	Chain	Bond lengths		Bond angles	
		RMSZ	# Z >5	RMSZ	# Z >5
1	A	0.40	0/4378	0.61	0/5945
1	B	0.40	0/4249	0.59	0/5785
All	All	0.40	0/8627	0.60	0/11730

There are no bond length outliers.

There are no bond angle outliers.

There are no chirality outliers.

There are no planarity outliers.

5.2 Too-close contacts

In the following table, the Non-H and H(model) columns list the number of non-hydrogen atoms and hydrogen atoms in the chain respectively. The H(added) column lists the number of hydrogen atoms added and optimized by MolProbity. The Clashes column lists the number of clashes within the asymmetric unit, whereas Symm-Clashes lists symmetry related clashes.

Mol	Chain	Non-H	H(model)	H(added)	Clashes	Symm-Clashes
1	A	4296	0	4011	132	0
1	B	4169	0	3777	135	0
2	A	22	0	21	2	0
2	B	22	0	21	3	0
3	A	19	0	0	2	0
3	B	12	0	0	0	0
All	All	8540	0	7830	267	0

The all-atom clashscore is defined as the number of clashes found per 1000 atoms (including hydrogen atoms). The all-atom clashscore for this structure is 16.

All (267) close contacts within the same asymmetric unit are listed below, sorted by their clash

magnitude.

Atom-1	Atom-2	Interatomic distance (Å)	Clash overlap (Å)
1:B:135:LEU:HD11	1:B:162:LYS:HG3	1.13	1.13
1:A:152:PRO:HB2	1:A:257:ARG:HH11	1.12	1.08
1:B:57:GLU:HG3	1:B:58:SER:H	1.28	0.95
1:A:61:ASN:HD22	1:A:64:LYS:HE3	1.28	0.94
1:B:557:LYS:HG3	1:B:558:CYS:N	1.82	0.91
1:A:209:ARG:HH11	1:A:209:ARG:HG2	1.35	0.88
1:A:66:LEU:O	1:A:70:PHE:HD1	1.57	0.88
1:A:281:LYS:HB2	1:A:282:PRO:HD2	1.56	0.87
1:A:152:PRO:HB2	1:A:257:ARG:NH1	1.88	0.87
1:A:545:LYS:C	1:A:545:LYS:HD2	1.95	0.85
1:B:120:VAL:HG21	1:B:175:ALA:HA	1.59	0.84
1:B:319:TYR:CE1	1:B:323:LYS:HG3	2.13	0.83
1:A:424:VAL:O	1:A:428:ARG:HG3	1.78	0.82
1:B:151:ALA:HB3	1:B:152:PRO:HD3	1.61	0.82
1:A:135:LEU:HD11	1:A:162:LYS:HG3	1.62	0.80
1:A:133:THR:O	1:A:137:LYS:HG3	1.82	0.80
1:B:557:LYS:HG3	1:B:558:CYS:H	1.45	0.80
1:B:39:HIS:O	1:B:43:VAL:HG23	1.82	0.78
1:A:383:GLU:HB3	1:A:384:PRO:HD3	1.63	0.78
1:B:117:ARG:NH2	1:B:182:LEU:HB3	2.01	0.76
1:B:110:PRO:HB2	1:B:112:LEU:CD2	2.16	0.75
1:B:95:GLU:OE1	1:B:99:ASN:HB2	1.87	0.75
1:A:95:GLU:CB	1:A:96:PRO:HD3	2.16	0.75
1:A:276:LYS:HG3	3:A:2007:HOH:O	1.84	0.75
1:B:557:LYS:HD3	1:B:571:GLU:CB	2.16	0.74
1:B:424:VAL:O	1:B:428:ARG:HG3	1.87	0.74
1:B:345:LEU:HD22	1:B:446:MET:HE1	1.69	0.73
1:A:151:ALA:HB3	1:A:152:PRO:HD3	1.70	0.72
1:B:43:VAL:O	1:B:46:VAL:HG23	1.90	0.72
1:B:383:GLU:HB3	1:B:384:PRO:HD3	1.70	0.72
1:B:42:LEU:O	1:B:46:VAL:HG22	1.90	0.72
1:B:265:CYS:O	1:B:268:GLN:HG3	1.89	0.72
1:B:110:PRO:HB2	1:B:112:LEU:HD22	1.69	0.72
1:B:66:LEU:O	1:B:70:PHE:HD1	1.71	0.72
1:B:378:LYS:HB2	1:B:379:PRO:HD3	1.74	0.69
1:B:364:ALA:O	1:B:366:PRO:HD3	1.92	0.69
1:A:218:ARG:NH2	1:A:222:ARG:HH21	1.90	0.69
1:B:127:PHE:O	1:B:131:GLU:HB3	1.93	0.68
1:A:513:ILE:HG13	1:A:514:CYS:N	2.06	0.68
1:B:557:LYS:NZ	1:B:567:CYS:SG	2.65	0.68
1:B:59:ALA:HB3	1:B:62:CYS:SG	2.34	0.67

Continued on next page...

Continued from previous page...

Atom-1	Atom-2	Interatomic distance (Å)	Clash overlap (Å)
1:A:373:VAL:HG13	1:A:374:PHE:HD1	1.59	0.67
1:A:225:LYS:HG2	1:A:299:PRO:HG3	1.76	0.67
1:A:214:TRP:CD1	1:A:343:VAL:HG11	2.29	0.67
1:A:545:LYS:HD2	1:A:546:ALA:N	2.10	0.67
1:A:531:GLU:O	1:A:535:HIS:ND1	2.23	0.67
1:B:325:VAL:O	1:B:329:MET:HG3	1.94	0.67
1:A:240:LYS:O	1:A:244:GLU:HG3	1.95	0.66
1:B:483:ASN:O	1:B:486:PRO:HD2	1.94	0.66
1:B:483:ASN:C	1:B:486:PRO:HD2	2.17	0.65
1:A:169:CYS:HA	1:A:174:LYS:HD3	1.79	0.65
1:B:117:ARG:HH22	1:B:182:LEU:HB3	1.62	0.65
1:B:25:ILE:O	1:B:29:GLN:HG3	1.96	0.65
1:B:116:VAL:O	1:B:118:PRO:HD3	1.98	0.64
1:B:345:LEU:HD22	1:B:446:MET:CE	2.27	0.64
1:A:513:ILE:CD1	1:A:555:VAL:HG13	2.29	0.63
1:A:120:VAL:HG11	1:A:174:LYS:HB2	1.80	0.63
1:B:57:GLU:CG	1:B:58:SER:H	2.08	0.62
1:A:510:HIS:HA	1:A:568:PHE:CB	2.29	0.62
1:A:152:PRO:CB	1:A:257:ARG:HH11	2.00	0.62
1:B:30:TYR:HE1	1:B:103:LEU:HD23	1.65	0.62
1:A:209:ARG:NH1	1:A:209:ARG:HG2	2.12	0.62
1:A:483:ASN:O	1:A:486:PRO:HD2	1.99	0.62
1:A:433:VAL:HG22	1:A:452:TYR:CD2	2.35	0.62
1:B:42:LEU:O	1:B:46:VAL:CG2	2.47	0.61
1:A:120:VAL:HG21	1:A:175:ALA:HA	1.83	0.61
1:B:373:VAL:HG13	1:B:374:PHE:HD1	1.64	0.61
1:A:265:CYS:SG	1:A:286:LYS:HD2	2.40	0.61
1:A:373:VAL:HG13	1:A:374:PHE:CD1	2.35	0.61
1:A:179:LEU:HB2	1:A:180:PRO:HD3	1.83	0.61
1:A:61:ASN:ND2	1:A:64:LYS:HE3	2.09	0.61
1:A:209:ARG:CG	1:A:209:ARG:HH11	2.13	0.61
1:B:552:ALA:O	1:B:555:VAL:HG12	2.02	0.60
1:B:135:LEU:CD1	1:B:162:LYS:HG3	2.08	0.60
1:A:483:ASN:C	1:A:486:PRO:HD2	2.22	0.60
1:A:378:LYS:HB3	1:A:379:PRO:HD3	1.84	0.60
1:B:557:LYS:NZ	1:B:571:GLU:CB	2.65	0.59
1:A:325:VAL:O	1:A:329:MET:HG3	2.02	0.59
1:A:513:ILE:HD11	1:A:555:VAL:HG13	1.83	0.59
1:B:503:ASN:ND2	1:B:506:THR:OG1	2.36	0.59
1:B:222:ARG:C	1:B:224:PRO:HD3	2.24	0.58
1:B:262:LYS:O	1:B:266:GLU:HG3	2.04	0.58

Continued on next page...

Continued from previous page...

Atom-1	Atom-2	Interatomic distance (Å)	Clash overlap (Å)
1:A:545:LYS:CD	1:A:545:LYS:C	2.71	0.58
1:A:400:GLU:O	1:A:404:GLN:HG3	2.04	0.58
1:B:400:GLU:O	1:B:404:GLN:HG3	2.03	0.58
1:B:410:ARG:HH11	1:B:410:ARG:HG2	1.68	0.58
1:B:32:GLN:NE2	1:B:147:PRO:HG3	2.19	0.58
1:B:410:ARG:HD3	2:B:2001:9NV:HG2C	1.86	0.58
1:A:513:ILE:CG1	1:A:514:CYS:N	2.67	0.58
1:B:57:GLU:HG3	1:B:58:SER:N	2.11	0.57
1:B:391:ASN:HB3	2:B:2001:9NV:H222	1.85	0.57
1:B:499:PRO:HB3	1:B:535:HIS:O	2.03	0.57
1:B:444:LYS:O	1:B:447:PRO:HD2	2.05	0.57
1:A:388:ILE:HD13	2:A:2001:9NV:H19	1.87	0.57
1:B:214:TRP:CD1	1:B:343:VAL:HG11	2.40	0.57
1:B:26:ALA:HB2	1:B:250:LEU:HD12	1.87	0.57
1:B:71:GLY:HA3	1:B:98:ARG:NH2	2.20	0.57
1:A:107:ASP:O	1:A:110:PRO:HD3	2.06	0.56
1:A:222:ARG:O	1:A:224:PRO:HD3	2.05	0.56
1:B:311:GLU:O	1:B:367:HIS:NE2	2.32	0.56
1:B:367:HIS:O	1:B:371:ALA:HB2	2.05	0.56
1:A:529:LEU:O	1:A:533:VAL:HG23	2.06	0.55
1:A:536:LYS:CG	1:A:539:ALA:HB2	2.37	0.55
1:A:510:HIS:O	1:A:513:ILE:HG23	2.06	0.55
1:B:20:LYS:CE	1:B:44:ASN:OD1	2.56	0.54
1:A:222:ARG:C	1:A:224:PRO:HD3	2.28	0.54
1:A:5:SER:HA	1:A:62:CYS:O	2.08	0.53
1:B:66:LEU:O	1:B:70:PHE:CD1	2.57	0.53
1:B:168:CYS:SG	1:B:177:CYS:C	2.86	0.53
1:A:66:LEU:HB3	1:A:70:PHE:CE1	2.43	0.53
1:A:319:TYR:CE1	1:A:323:LYS:HG3	2.44	0.53
1:B:563:ASP:CG	1:B:567:CYS:HB2	2.29	0.53
1:B:557:LYS:HZ2	1:B:571:GLU:CB	2.22	0.53
1:B:120:VAL:HG21	1:B:175:ALA:CA	2.34	0.53
1:A:72:ASP:O	1:A:76:THR:HG23	2.08	0.53
1:A:95:GLU:CB	1:A:96:PRO:CD	2.86	0.53
1:A:161:TYR:CZ	1:A:165:PHE:HE2	2.27	0.53
1:B:224:PRO:HD2	1:B:296:ASP:HB3	1.90	0.53
1:B:9:HIS:CD2	1:B:13:ASP:OD2	2.62	0.53
1:A:305:LEU:HD13	1:A:334:TYR:CD2	2.44	0.53
1:B:36:PHE:CZ	1:B:40:VAL:HG21	2.44	0.52
1:A:224:PRO:HD2	1:A:296:ASP:HB3	1.90	0.52
1:A:66:LEU:O	1:A:70:PHE:CD1	2.49	0.52

Continued on next page...

Continued from previous page...

Atom-1	Atom-2	Interatomic distance (Å)	Clash overlap (Å)
1:B:90:CYS:O	1:B:98:ARG:HG3	2.10	0.52
1:B:543:GLN:O	1:B:546:ALA:HB3	2.10	0.52
1:B:561:ALA:HB3	1:B:563:ASP:OD1	2.09	0.51
1:B:36:PHE:O	1:B:40:VAL:HG23	2.10	0.51
1:A:46:VAL:HG22	1:A:73:LYS:HG3	1.92	0.51
1:A:286:LYS:O	1:A:290:ILE:HG13	2.10	0.51
1:A:30:TYR:HE1	1:A:103:LEU:HD23	1.75	0.51
1:B:398:LEU:HB3	1:B:402:LYS:HB2	1.94	0.50
1:A:14:LEU:HD13	1:A:22:LEU:HD12	1.93	0.50
1:B:179:LEU:N	1:B:180:PRO:HD2	2.27	0.50
1:A:39:HIS:O	1:A:43:VAL:HG23	2.11	0.50
1:A:107:ASP:OD2	1:A:110:PRO:HA	2.12	0.50
1:B:223:PHE:CD1	1:B:272:SER:HB2	2.46	0.50
1:B:30:TYR:CE1	1:B:103:LEU:HD23	2.46	0.50
1:A:194:ALA:HB1	1:A:455:VAL:CG1	2.42	0.50
1:B:498:VAL:O	1:B:498:VAL:HG23	2.11	0.50
1:A:145:ARG:HG3	1:A:145:ARG:HH11	1.76	0.50
1:B:263:TYR:C	1:B:263:TYR:CD1	2.84	0.50
1:A:150:TYR:CE2	1:A:257:ARG:CZ	2.95	0.50
1:B:557:LYS:HE2	1:B:567:CYS:SG	2.52	0.49
1:A:42:LEU:O	1:A:46:VAL:HG23	2.12	0.49
1:B:107:ASP:HB3	1:B:110:PRO:HG3	1.94	0.49
1:B:545:LYS:HA	1:B:548:MET:HB2	1.92	0.49
1:A:135:LEU:HD11	1:A:162:LYS:CG	2.37	0.49
1:A:247:HIS:O	1:A:247:HIS:ND1	2.46	0.49
1:A:513:ILE:HD11	1:A:559:CYS:SG	2.53	0.49
1:B:502:PHE:CZ	1:B:504:ALA:HA	2.48	0.49
1:B:57:GLU:O	1:B:58:SER:C	2.51	0.49
1:A:567:CYS:O	1:A:571:GLU:N	2.43	0.48
1:A:511:ALA:O	1:A:514:CYS:SG	2.72	0.48
1:B:10:ARG:O	1:B:14:LEU:HD23	2.13	0.48
1:B:410:ARG:NH1	1:B:410:ARG:HG2	2.28	0.48
1:B:152:PRO:HB2	1:B:257:ARG:HH11	1.79	0.48
1:A:388:ILE:HD13	2:A:2001:9NV:C19	2.43	0.48
1:B:99:ASN:HA	1:B:102:PHE:HD2	1.78	0.48
1:B:50:ALA:O	1:B:54:VAL:HG23	2.14	0.48
1:B:9:HIS:HD2	1:B:13:ASP:OD2	1.97	0.47
1:A:420:THR:HG23	1:A:530:VAL:HG11	1.95	0.47
1:B:117:ARG:O	1:B:117:ARG:HG3	2.15	0.47
1:A:290:ILE:O	1:A:293:VAL:HG22	2.15	0.47
1:B:39:HIS:CD2	1:B:140:TYR:HE1	2.33	0.47

Continued on next page...

Continued from previous page...

Atom-1	Atom-2	Interatomic distance (Å)	Clash overlap (Å)
1:B:281:LYS:CG	1:B:285:GLU:OE2	2.63	0.47
1:A:512:ASP:O	1:A:515:THR:HG22	2.15	0.47
1:B:39:HIS:HD2	1:B:140:TYR:HE1	1.62	0.47
1:A:370:TYR:HD1	1:A:370:TYR:O	1.98	0.47
1:B:98:ARG:O	1:B:101:CYS:HB3	2.15	0.46
1:B:27:PHE:HE1	1:B:70:PHE:HD2	1.62	0.46
1:A:224:PRO:HB2	1:A:299:PRO:HD3	1.97	0.46
1:A:451:ASP:OD1	1:A:452:TYR:N	2.48	0.46
1:A:161:TYR:CE2	1:A:165:PHE:CE2	3.04	0.46
1:A:555:VAL:O	1:A:559:CYS:HB2	2.16	0.46
1:B:240:LYS:O	1:B:244:GLU:HG3	2.15	0.46
1:A:46:VAL:CG2	1:A:73:LYS:HG3	2.45	0.46
1:B:503:ASN:N	1:B:503:ASN:OD1	2.49	0.46
1:A:39:HIS:HD2	1:A:140:TYR:CE1	2.34	0.46
1:A:153:GLU:HA	1:A:153:GLU:OE1	2.16	0.45
1:A:61:ASN:HB3	1:A:64:LYS:HD2	1.98	0.45
1:A:383:GLU:HB3	1:A:384:PRO:CD	2.42	0.45
1:A:289:CYS:O	1:A:293:VAL:HG13	2.17	0.45
1:A:521:ARG:O	1:A:524:LYS:N	2.48	0.45
1:A:21:ALA:HB1	1:A:155:LEU:HD21	1.98	0.45
1:B:519:LYS:O	1:B:523:ILE:HG13	2.17	0.45
1:B:337:ARG:HG3	1:B:337:ARG:HH11	1.80	0.45
1:B:441:PRO:O	1:B:443:ALA:N	2.49	0.45
1:B:388:ILE:HD12	1:B:449:ALA:CB	2.47	0.45
1:B:116:VAL:O	1:B:116:VAL:HG13	2.17	0.45
1:B:222:ARG:HA	1:B:295:ASN:OD1	2.16	0.45
1:B:348:ARG:HG3	1:B:482:VAL:CG1	2.47	0.45
1:B:311:GLU:O	1:B:312:SER:C	2.55	0.45
1:B:100:GLU:HG2	1:B:103:LEU:HD12	1.99	0.45
1:B:535:HIS:C	1:B:537:PRO:HD3	2.36	0.45
1:A:35:PRO:HG2	1:A:38:ASP:OD2	2.15	0.45
1:A:209:ARG:CG	1:A:209:ARG:NH1	2.74	0.44
1:B:237:ASP:HB3	1:B:260:LEU:HD12	1.99	0.44
1:B:237:ASP:CB	1:B:260:LEU:HD12	2.46	0.44
1:B:557:LYS:CE	1:B:567:CYS:SG	3.05	0.44
1:A:545:LYS:O	1:A:549:ASP:OD1	2.35	0.44
1:A:278:CYS:O	1:A:281:LYS:HG2	2.17	0.44
1:B:446:MET:HB3	1:B:447:PRO:HD3	1.97	0.44
1:A:7:VAL:HG23	3:A:2002:HOH:O	2.16	0.44
1:A:410:ARG:O	1:A:414:LYS:HG3	2.17	0.44
1:B:95:GLU:OE2	1:B:98:ARG:HB3	2.18	0.44

Continued on next page...

Continued from previous page...

Atom-1	Atom-2	Interatomic distance (Å)	Clash overlap (Å)
1:A:161:TYR:CE2	1:A:165:PHE:HE2	2.36	0.44
1:A:38:ASP:O	1:A:42:LEU:HG	2.18	0.44
1:A:513:ILE:HD12	1:A:555:VAL:HG13	1.97	0.44
1:A:31:LEU:HD12	1:A:74:LEU:HD22	1.99	0.44
1:A:549:ASP:O	1:A:552:ALA:HB3	2.17	0.43
1:B:151:ALA:HB3	1:B:152:PRO:CD	2.40	0.43
1:A:425:GLU:OE1	1:A:425:GLU:HA	2.17	0.43
1:A:25:ILE:HD13	1:A:154:LEU:HD23	2.00	0.43
1:A:296:ASP:OD1	1:A:297:GLU:N	2.51	0.43
1:B:530:VAL:O	1:B:534:LYS:HG3	2.18	0.43
1:A:36:PHE:O	1:A:40:VAL:HG23	2.19	0.43
1:A:168:CYS:SG	1:A:177:CYS:C	2.97	0.43
1:B:384:PRO:O	1:B:388:ILE:HG12	2.19	0.43
1:A:303:PRO:O	1:A:337:ARG:NH1	2.52	0.43
1:A:426:VAL:O	1:A:430:LEU:HG	2.18	0.43
1:B:27:PHE:HE1	1:B:70:PHE:CD2	2.35	0.43
1:B:290:ILE:O	1:B:293:VAL:HG12	2.18	0.43
1:B:387:LEU:CD2	1:B:485:ARG:NH1	2.82	0.42
1:B:218:ARG:NH2	1:B:222:ARG:HH21	2.17	0.42
1:B:408:LEU:HD22	1:B:530:VAL:CG2	2.50	0.42
1:A:249:ASP:HB3	1:A:252:GLU:CG	2.49	0.42
1:B:485:ARG:HB3	1:B:486:PRO:HD3	2.01	0.42
1:B:409:VAL:O	1:B:413:LYS:HG3	2.19	0.42
1:A:145:ARG:NH1	1:A:145:ARG:HG3	2.34	0.42
1:B:373:VAL:HG13	1:B:374:PHE:CD1	2.50	0.42
1:A:39:HIS:HD2	1:A:140:TYR:HE1	1.66	0.42
1:A:501:GLU:HA	1:A:501:GLU:OE1	2.18	0.42
1:A:56:ASP:O	1:A:58:SER:N	2.47	0.42
1:B:212:LYS:O	1:B:216:VAL:HG23	2.20	0.42
1:B:222:ARG:O	1:B:224:PRO:HD3	2.20	0.42
1:A:281:LYS:HB2	1:A:282:PRO:CD	2.37	0.42
1:B:20:LYS:NZ	1:B:44:ASN:OD1	2.53	0.42
1:B:35:PRO:HD2	1:B:38:ASP:OD2	2.20	0.42
1:A:408:LEU:HD21	1:A:424:VAL:HA	2.01	0.41
1:A:305:LEU:HD21	1:A:333:GLU:HB3	2.01	0.41
1:A:507:PHE:N	1:A:507:PHE:CD1	2.87	0.41
1:B:57:GLU:CG	1:B:58:SER:N	2.78	0.41
1:B:414:LYS:HE3	1:B:488:PHE:O	2.21	0.41
1:A:493:VAL:HG21	1:A:538:LYS:NZ	2.36	0.41
1:A:464:HIS:CE1	1:A:469:VAL:H	2.37	0.41
1:A:56:ASP:C	1:A:58:SER:H	2.23	0.41

Continued on next page...

Continued from previous page...

Atom-1	Atom-2	Interatomic distance (Å)	Clash overlap (Å)
1:B:464:HIS:CG	1:B:473:VAL:HG11	2.55	0.41
1:B:576:VAL:HA	1:B:579:SER:HB2	2.03	0.41
1:B:151:ALA:CB	1:B:152:PRO:HD3	2.41	0.41
1:B:61:ASN:HB3	1:B:64:LYS:CD	2.51	0.41
1:A:388:ILE:HD12	1:A:449:ALA:CB	2.51	0.41
1:B:263:TYR:HD1	1:B:264:ILE:N	2.19	0.41
1:B:370:TYR:C	1:B:370:TYR:CD1	2.94	0.41
1:A:279:CYS:HA	1:A:286:LYS:CD	2.51	0.41
1:A:262:LYS:O	1:A:266:GLU:HG3	2.21	0.41
1:A:61:ASN:HB3	1:A:64:LYS:CD	2.52	0.40
1:B:27:PHE:CE1	1:B:70:PHE:HD2	2.39	0.40
1:A:100:GLU:HA	1:A:100:GLU:OE1	2.22	0.40
1:A:311:GLU:O	1:A:312:SER:C	2.59	0.40
1:A:139:LEU:HD21	1:A:158:ALA:HB2	2.03	0.40
1:A:543:GLN:O	1:A:547:VAL:HG23	2.22	0.40
1:B:388:ILE:HA	2:B:2001:9NV:H19	2.04	0.40
1:A:98:ARG:O	1:A:101:CYS:HB3	2.21	0.40
1:A:227:GLU:HA	1:A:227:GLU:OE1	2.21	0.40
1:B:558:CYS:C	1:B:560:LYS:N	2.74	0.40
1:B:14:LEU:N	1:B:14:LEU:HD22	2.37	0.40
1:A:41:LYS:HG3	1:A:45:GLU:OE2	2.22	0.40

There are no symmetry-related clashes.

5.3 Torsion angles [i](#)

5.3.1 Protein backbone [i](#)

In the following table, the Percentiles column shows the percent Ramachandran outliers of the chain as a percentile score with respect to all X-ray entries followed by that with respect to entries of similar resolution.

The Analysed column shows the number of residues for which the backbone conformation was analysed, and the total number of residues.

Mol	Chain	Analysed	Favoured	Allowed	Outliers	Percentiles	
1	A	565/585 (97%)	507 (90%)	44 (8%)	14 (2%)	7	10
1	B	562/585 (96%)	498 (89%)	54 (10%)	10 (2%)	11	18
All	All	1127/1170 (96%)	1005 (89%)	98 (9%)	24 (2%)	9	14

All (24) Ramachandran outliers are listed below:

Mol	Chain	Res	Type
1	A	59	ALA
1	A	95	GLU
1	A	300	ALA
1	B	54	VAL
1	B	57	GLU
1	B	300	ALA
1	B	565	GLU
1	A	58	SER
1	A	315	VAL
1	A	546	ALA
1	A	557	LYS
1	B	58	SER
1	B	442	GLU
1	A	57	GLU
1	A	60	GLU
1	A	562	ASP
1	B	312	SER
1	A	312	SER
1	B	60	GLU
1	B	118	PRO
1	B	283	LEU
1	A	307	ALA
1	A	96	PRO
1	A	303	PRO

5.3.2 Protein sidechains ⓘ

In the following table, the Percentiles column shows the percent sidechain outliers of the chain as a percentile score with respect to all X-ray entries followed by that with respect to entries of similar resolution.

The Analysed column shows the number of residues for which the sidechain conformation was analysed, and the total number of residues.

Mol	Chain	Analysed	Rotameric	Outliers	Percentiles	
1	A	437/511 (86%)	422 (97%)	15 (3%)	44	72
1	B	404/511 (79%)	393 (97%)	11 (3%)	52	79
All	All	841/1022 (82%)	815 (97%)	26 (3%)	47	75

All (26) residues with a non-rotameric sidechain are listed below:

Mol	Chain	Res	Type
1	A	99	ASN
1	A	104	GLN
1	A	109	ASN
1	A	114	ARG
1	A	117	ARG
1	A	186	ARG
1	A	245	CYS
1	A	252	GLU
1	A	262	LYS
1	A	442	GLU
1	A	452	TYR
1	A	467	THR
1	A	493	VAL
1	A	545	LYS
1	A	550	ASP
1	B	37	GLU
1	B	46	VAL
1	B	105	HIS
1	B	112	LEU
1	B	245	CYS
1	B	375	ASP
1	B	489	SER
1	B	501	GLU
1	B	503	ASN
1	B	548	MET
1	B	557	LYS

Some sidechains can be flipped to improve hydrogen bonding and reduce clashes. All (13) such sidechains are listed below:

Mol	Chain	Res	Type
1	A	29	GLN
1	A	39	HIS
1	A	61	ASN
1	A	109	ASN
1	A	318	ASN
1	A	464	HIS
1	A	483	ASN
1	B	9	HIS
1	B	67	HIS
1	B	247	HIS
1	B	464	HIS
1	B	483	ASN
1	B	503	ASN

5.3.3 RNA ⓘ

There are no RNA molecules in this entry.

5.4 Non-standard residues in protein, DNA, RNA chains ⓘ

There are no non-standard protein/DNA/RNA residues in this entry.

5.5 Carbohydrates ⓘ

There are no carbohydrates in this entry.

5.6 Ligand geometry ⓘ

2 ligands are modelled in this entry.

In the following table, the Counts columns list the number of bonds (or angles) for which Mogul statistics could be retrieved, the number of bonds (or angles) that are observed in the model and the number of bonds (or angles) that are defined in the chemical component dictionary. The Link column lists molecule types, if any, to which the group is linked. The Z score for a bond length (or angle) is the number of standard deviations the observed value is removed from the expected value. A bond length (or angle) with $|Z| > 2$ is considered an outlier worth inspection. RMSZ is the root-mean-square of all Z scores of the bond lengths (or angles).

Mol	Type	Chain	Res	Link	Bond lengths			Bond angles		
					Counts	RMSZ	# $ Z > 2$	Counts	RMSZ	# $ Z > 2$
2	9NV	A	2001	-	22,23,25	2.18	9 (40%)	30,33,36	1.38	4 (13%)
2	9NV	B	2001	-	22,23,25	2.22	10 (45%)	30,33,36	1.32	4 (13%)

In the following table, the Chirals column lists the number of chiral outliers, the number of chiral centers analysed, the number of these observed in the model and the number defined in the chemical component dictionary. Similar counts are reported in the Torsion and Rings columns. '-' means no outliers of that kind were identified.

Mol	Type	Chain	Res	Link	Chirals	Torsions	Rings
2	9NV	A	2001	-	-	0/18/18/22	0/2/2/2
2	9NV	B	2001	-	-	0/18/18/22	0/2/2/2

All (19) bond length outliers are listed below:

Mol	Chain	Res	Type	Atoms	Z	Observed(Å)	Ideal(Å)
2	B	2001	9NV	C11-S8	-3.24	1.74	1.77

Continued on next page...

Continued from previous page...

Mol	Chain	Res	Type	Atoms	Z	Observed(Å)	Ideal(Å)
2	B	2001	9NV	C13-C12	2.14	1.43	1.38
2	B	2001	9NV	C18-C17	2.34	1.42	1.36
2	A	2001	9NV	C18-C17	2.36	1.42	1.36
2	A	2001	9NV	C14-C15	2.38	1.47	1.42
2	B	2001	9NV	C20-C15	2.45	1.48	1.42
2	A	2001	9NV	C20-C15	2.46	1.48	1.42
2	B	2001	9NV	C12-C11	2.59	1.40	1.37
2	A	2001	9NV	C13-C12	2.69	1.44	1.38
2	A	2001	9NV	C12-C11	2.70	1.40	1.37
2	B	2001	9NV	C11-C16	2.82	1.47	1.43
2	B	2001	9NV	C14-C15	2.86	1.48	1.42
2	B	2001	9NV	C16-C15	3.53	1.50	1.43
2	A	2001	9NV	C18-C19	3.59	1.46	1.38
2	A	2001	9NV	C16-C15	3.70	1.50	1.43
2	B	2001	9NV	C18-C19	3.74	1.46	1.38
2	A	2001	9NV	C11-C16	3.84	1.49	1.43
2	A	2001	9NV	C19-C20	4.54	1.48	1.38
2	B	2001	9NV	C19-C20	4.90	1.48	1.38

All (8) bond angle outliers are listed below:

Mol	Chain	Res	Type	Atoms	Z	Observed(°)	Ideal(°)
2	B	2001	9NV	C23-N21-C22	-3.09	105.76	115.96
2	A	2001	9NV	C-CA-CB	-2.88	106.58	111.24
2	A	2001	9NV	C23-N21-C22	-2.78	106.78	115.96
2	A	2001	9NV	O10-S8-N	-2.25	102.67	106.90
2	B	2001	9NV	C-CA-CB	-2.20	107.68	111.24
2	B	2001	9NV	C11-C16-C15	-2.16	115.57	117.78
2	B	2001	9NV	C19-C20-N21	2.16	125.18	121.82
2	A	2001	9NV	CG-CB-CA	2.62	118.02	114.30

There are no chirality outliers.

There are no torsion outliers.

There are no ring outliers.

2 monomers are involved in 5 short contacts:

Mol	Chain	Res	Type	Clashes	Symm-Clashes
2	A	2001	9NV	2	0
2	B	2001	9NV	3	0

5.7 Other polymers

There are no such residues in this entry.

5.8 Polymer linkage issues

There are no chain breaks in this entry.

6 Fit of model and data ⓘ

6.1 Protein, DNA and RNA chains ⓘ

In the following table, the column labelled ‘#RSRZ > 2’ contains the number (and percentage) of RSRZ outliers, followed by percent RSRZ outliers for the chain as percentile scores relative to all X-ray entries and entries of similar resolution. The OWAB column contains the minimum, median, 95th percentile and maximum values of the occupancy-weighted average B-factor per residue. The column labelled ‘Q < 0.9’ lists the number of (and percentage) of residues with an average occupancy less than 0.9.

Mol	Chain	Analysed	<RSRZ>	#RSRZ > 2		OWAB(Å ²)	Q < 0.9
1	A	569/585 (97%)	0.09	21 (3%)	45 50	35, 71, 147, 158	0
1	B	566/585 (96%)	0.00	19 (3%)	49 54	34, 72, 141, 161	0
All	All	1135/1170 (97%)	0.05	40 (3%)	48 53	34, 71, 144, 161	0

All (40) RSRZ outliers are listed below:

Mol	Chain	Res	Type	RSRZ
1	A	509	PHE	7.8
1	B	562	ASP	6.7
1	A	563	ASP	6.2
1	A	568	PHE	5.8
1	A	504	ALA	5.3
1	A	569	ALA	5.3
1	B	509	PHE	4.2
1	A	505	GLU	4.1
1	A	508	THR	3.9
1	B	8	ALA	3.7
1	A	510	HIS	3.4
1	B	566	THR	3.4
1	B	504	ALA	3.3
1	A	555	VAL	3.2
1	A	561	ALA	3.2
1	A	507	PHE	3.2
1	A	506	THR	3.2
1	B	561	ALA	3.2
1	A	92	ALA	2.9
1	B	582	ALA	2.8
1	B	128	HIS	2.8
1	B	54	VAL	2.7
1	A	59	ALA	2.7
1	A	562	ASP	2.7

Continued on next page...

Continued from previous page...

Mol	Chain	Res	Type	RSRZ
1	B	7	VAL	2.7
1	A	558	CYS	2.5
1	B	52	THR	2.5
1	B	56	ASP	2.5
1	B	505	GLU	2.4
1	A	513	ILE	2.4
1	B	63	ASP	2.4
1	A	511	ALA	2.3
1	A	559	CYS	2.3
1	B	5	SER	2.3
1	A	373	VAL	2.3
1	B	11	PHE	2.2
1	B	70	PHE	2.2
1	A	582	ALA	2.2
1	B	577	ALA	2.1
1	B	36	PHE	2.1

6.2 Non-standard residues in protein, DNA, RNA chains [i](#)

There are no non-standard protein/DNA/RNA residues in this entry.

6.3 Carbohydrates [i](#)

There are no carbohydrates in this entry.

6.4 Ligands [i](#)

In the following table, the Atoms column lists the number of modelled atoms in the group and the number defined in the chemical component dictionary. LLDF column lists the quality of electron density of the group with respect to its neighbouring residues in protein, DNA or RNA chains. The B-factors column lists the minimum, median, 95th percentile and maximum values of B factors of atoms in the group. The column labelled 'Q< 0.9' lists the number of atoms with occupancy less than 0.9.

Mol	Type	Chain	Res	Atoms	RSCC	RSR	LLDF	B-factors(Å ²)	Q<0.9
2	9NV	B	2001	22/24	0.95	0.21	1.56	57,61,72,73	0
2	9NV	A	2001	22/24	0.96	0.17	0.98	53,57,71,73	0

6.5 Other polymers

There are no such residues in this entry.