



Full wwPDB X-ray Structure Validation Report ⓘ

Feb 1, 2016 – 06:40 AM GMT

PDB ID : 2XXH
Title : CRYSTAL STRUCTURE OF 1-(4-(2-OXO-2-(1-PYRROLIDINYL)ETHYL)PHENYL)-3-(TRIFLUOROMETHYL)-4,5,6,7-TETRAHYDRO-1H-INDAZOLE IN COMPLEX WITH THE LIGAND BINDING DOMAIN OF THE RAT GLUA2 RECEPTOR AND GLUTAMATE AT 1.5Å RESOLUTION.
Authors : Ward, S.E.; Harries, M.; Aldegheri, L.; Austin, N.E.; Ballantine, S.; Ballini, E.; Bradley, D.M.; Bax, B.D.; Clarke, B.P.; Harris, A.J.; Harrison, S.A.; Melarange, R.A.; Mookherjee, C.; Mosley, J.; Dalnegro, G.; Olios, B.; Smith, K.J.; Thewlis, K.M.; Woollard, P.M.; Yusaf, S.P.
Deposited on : 2010-11-10
Resolution : 1.50 Å(reported)

This is a Full wwPDB X-ray Structure Validation Report for a publicly released PDB entry.
We welcome your comments at validation@mail.wwpdb.org
A user guide is available at
<http://wwpdb.org/validation/2016/XrayValidationReportHelp>
with specific help available everywhere you see the ⓘ symbol.

The following versions of software and data (see [references ⓘ](#)) were used in the production of this report:

MolProbity : 4.02b-467
Mogul : 1.7 (RC4), CSD as536be (2015)
Xtriage (Phenix) : 1.9-1692
EDS : rb-20026688
Percentile statistics : 20151230.v01 (using entries in the PDB archive December 30th 2015)
Refmac : 5.8.0135
CCP4 : 6.5.0
Ideal geometry (proteins) : Engh & Huber (2001)
Ideal geometry (DNA, RNA) : Parkinson et al. (1996)
Validation Pipeline (wwPDB-VP) : trunk26865

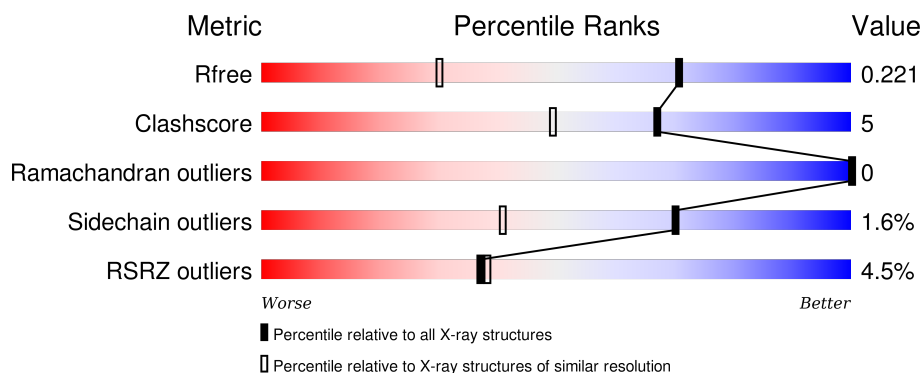
1 Overall quality at a glance

The following experimental techniques were used to determine the structure:

X-RAY DIFFRACTION

The reported resolution of this entry is 1.50 Å.

Percentile scores (ranging between 0-100) for global validation metrics of the entry are shown in the following graphic. The table shows the number of entries on which the scores are based.



Metric	Whole archive (#Entries)	Similar resolution (#Entries, resolution range(Å))
R_{free}	91344	2072 (1.50-1.50)
Clashscore	102246	2274 (1.50-1.50)
Ramachandran outliers	100387	2218 (1.50-1.50)
Sidechain outliers	100360	2216 (1.50-1.50)
RSRZ outliers	91569	2075 (1.50-1.50)

The table below summarises the geometric issues observed across the polymeric chains and their fit to the electron density. The red, orange, yellow and green segments on the lower bar indicate the fraction of residues that contain outliers for ≥ 3 , 2, 1 and 0 types of geometric quality criteria. A grey segment represents the fraction of residues that are not modelled. The numeric value for each fraction is indicated below the corresponding segment, with a dot representing fractions $\leq 5\%$. The upper red bar (where present) indicates the fraction of residues that have poor fit to the electron density. The numeric value is given above the bar.

Mol	Chain	Length	Quality of chain
1	A	263	<div> <div>5%</div> <div>95%</div> <div>5%</div> </div>
1	B	263	<div> <div>3%</div> <div>93%</div> <div>5% ..</div> </div>
1	C	263	<div> <div>5%</div> <div>90%</div> <div>8% .</div> </div>

The following table lists non-polymeric compounds, carbohydrate monomers and non-standard residues in protein, DNA, RNA chains that are outliers for geometric or electron-density-fit criteria:

Mol	Type	Chain	Res	Chirality	Geometry	Clashes	Electron density
3	1NG	A	310[A]	-	-	X	X
3	1NG	A	310[C]	-	-	X	X
3	1NG	B	310	-	-	-	X

2 Entry composition

There are 6 unique types of molecules in this entry. The entry contains 6784 atoms, of which 0 are hydrogens and 0 are deuteriums.

In the tables below, the ZeroOcc column contains the number of atoms modelled with zero occupancy, the AltConf column contains the number of residues with at least one atom in alternate conformation and the Trace column contains the number of residues modelled with at most 2 atoms.

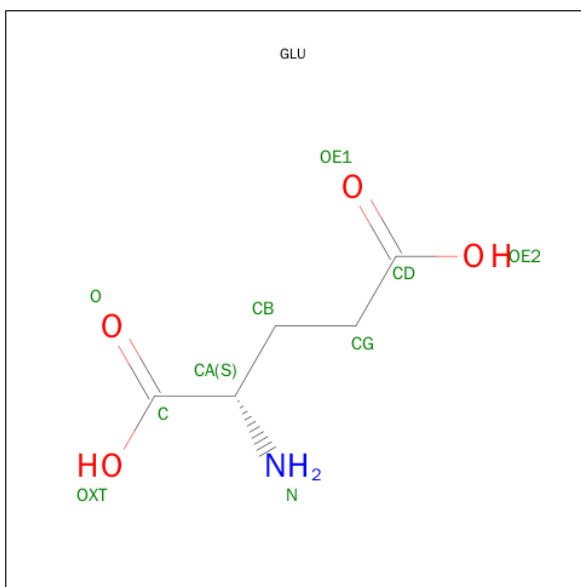
- Molecule 1 is a protein called GLUTAMATE RECEPTOR 2.

Mol	Chain	Residues	Atoms					ZeroOcc	AltConf	Trace
1	A	262	Total	C	N	O	S	0	8	1
			2058	1305	341	396	16			
1	B	260	Total	C	N	O	S	0	7	1
			2064	1309	345	395	15			
1	C	259	Total	C	N	O	S	0	3	0
			2020	1286	334	385	15			

There are 15 discrepancies between the modelled and reference sequences:

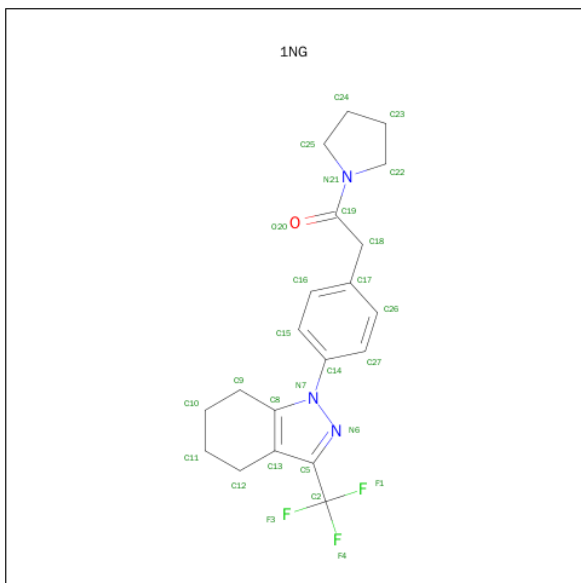
Chain	Residue	Modelled	Actual	Comment	Reference
A	1	GLY	-	EXPRESSION TAG	UNP P19491
A	2	ALA	-	EXPRESSION TAG	UNP P19491
A	118	GLY	PRO	LINKER	UNP P19491
A	119	THR	SER	LINKER	UNP P19491
A	242	SER	ASN	ENGINEERED MUTATION	UNP P19491
B	1	GLY	-	EXPRESSION TAG	UNP P19491
B	2	ALA	-	EXPRESSION TAG	UNP P19491
B	118	GLY	PRO	LINKER	UNP P19491
B	119	THR	SER	LINKER	UNP P19491
B	242	SER	ASN	ENGINEERED MUTATION	UNP P19491
C	1	GLY	-	EXPRESSION TAG	UNP P19491
C	2	ALA	-	EXPRESSION TAG	UNP P19491
C	118	GLY	PRO	LINKER	UNP P19491
C	119	THR	SER	LINKER	UNP P19491
C	242	SER	ASN	ENGINEERED MUTATION	UNP P19491

- Molecule 2 is GLUTAMIC ACID (three-letter code: GLU) (formula: C₅H₉NO₄).



Mol	Chain	Residues	Atoms				ZeroOcc	AltConf
2	A	1	Total	C	N	O	0	0
			10	5	1	4		
2	B	1	Total	C	N	O	0	0
			10	5	1	4		
2	C	1	Total	C	N	O	0	0
			10	5	1	4		

- Molecule 3 is 1-{4-[2-OXO-2-(1-PYRROLIDINYL)ETHYL]PHENYL}-3-(TRIFLUOROMETHYL)-4,5,6,7-TETRAHYDRO-1H-INDAZOLE (three-letter code: 1NG) (formula: C₂₀H₂₂F₃N₃O).



Mol	Chain	Residues	Atoms					ZeroOcc	AltConf
3	A	1	Total	C	F	N	O	0	1
			54	40	6	6	2		
3	B	1	Total	C	F	N	O	0	0
			27	20	3	3	1		

- Molecule 4 is SULFATE ION (three-letter code: SO4) (formula: O₄S).



Mol	Chain	Residues	Atoms			ZeroOcc	AltConf
4	B	1	Total	O	S	0	0
			5	4	1		

- Molecule 5 is ZINC ION (three-letter code: ZN) (formula: Zn).

Mol	Chain	Residues	Atoms		ZeroOcc	AltConf
5	B	3	Total	Zn	0	0
			3	3		
5	C	2	Total	Zn	0	0
			2	2		

- Molecule 6 is water.

Mol	Chain	Residues	Atoms		ZeroOcc	AltConf
6	A	174	Total	O	0	0
			174	174		
6	B	195	Total	O	0	0
			195	195		

Continued on next page...

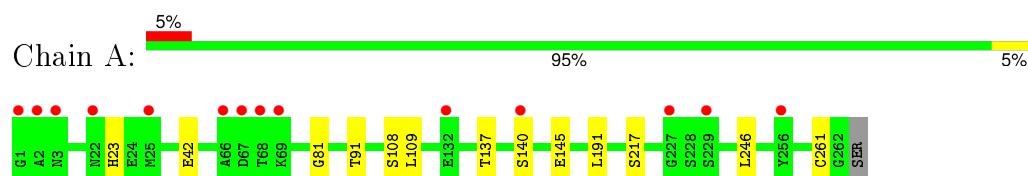
Continued from previous page...

Mol	Chain	Residues	Atoms		ZeroOcc	AltConf
6	C	152	Total	O	0	0
			152	152		

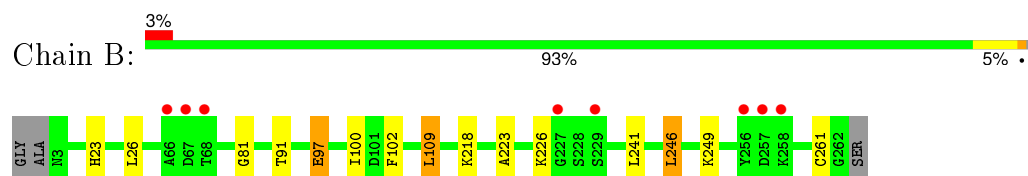
3 Residue-property plots [i](#)

These plots are drawn for all protein, RNA and DNA chains in the entry. The first graphic for a chain summarises the proportions of errors displayed in the second graphic. The second graphic shows the sequence view annotated by issues in geometry and electron density. Residues are color-coded according to the number of geometric quality criteria for which they contain at least one outlier: green = 0, yellow = 1, orange = 2 and red = 3 or more. A red dot above a residue indicates a poor fit to the electron density ($\text{RSRZ} > 2$). Stretches of 2 or more consecutive residues without any outlier are shown as a green connector. Residues present in the sample, but not in the model, are shown in grey.

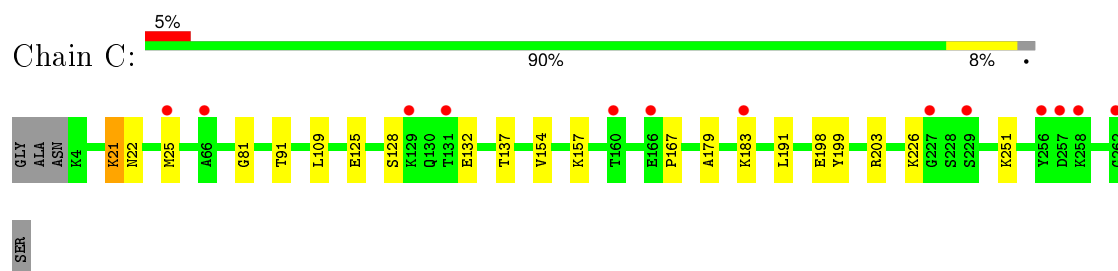
• Molecule 1: GLUTAMATE RECEPTOR 2



• Molecule 1: GLUTAMATE RECEPTOR 2



• Molecule 1: GLUTAMATE RECEPTOR 2



4 Data and refinement statistics

Property	Value	Source
Space group	P 21 21 2	Depositor
Cell constants a, b, c, α , β , γ	114.37 Å 163.58 Å 47.48 Å 90.00° 90.00° 90.00°	Depositor
Resolution (Å)	20.00 – 1.50 24.37 – 1.50	Depositor EDS
% Data completeness (in resolution range)	93.5 (20.00-1.50) 93.5 (24.37-1.50)	Depositor EDS
R_{merge}	0.07	Depositor
R_{sym}	(Not available)	Depositor
$\langle I/\sigma(I) \rangle$ ¹	2.27 (at 1.50 Å)	Xtriage
Refinement program	REFMAC 5.5.0109	Depositor
R, R_{free}	0.194 , 0.218 0.197 , 0.221	Depositor DCC
R_{free} test set	6704 reflections (5.27%)	DCC
Wilson B-factor (Å ²)	13.8	Xtriage
Anisotropy	0.182	Xtriage
Bulk solvent k_{sol} (e/Å ³), B_{sol} (Å ²)	0.40 , 51.1	EDS
Estimated twinning fraction	No twinning to report.	Xtriage
L-test for twinning ²	$\langle L \rangle = 0.50$, $\langle L^2 \rangle = 0.33$	Xtriage
Outliers	0 of 133988 reflections	Xtriage
F_o, F_c correlation	0.95	EDS
Total number of atoms	6784	wwPDB-VP
Average B, all atoms (Å ²)	21.0	wwPDB-VP

Xtriage's analysis on translational NCS is as follows: *The largest off-origin peak in the Patterson function is 12.17% of the height of the origin peak. No significant pseudotranslation is detected.*

¹Intensities estimated from amplitudes.

²Theoretical values of $\langle |L| \rangle$, $\langle L^2 \rangle$ for acentric reflections are 0.5, 0.375 respectively for untwinned datasets, and 0.333, 0.2 for perfectly twinned datasets.

5 Model quality [i](#)

5.1 Standard geometry [i](#)

Bond lengths and bond angles in the following residue types are not validated in this section: ZN, ING, SO4

The Z score for a bond length (or angle) is the number of standard deviations the observed value is removed from the expected value. A bond length (or angle) with $|Z| > 5$ is considered an outlier worth inspection. RMSZ is the root-mean-square of all Z scores of the bond lengths (or angles).

Mol	Chain	Bond lengths		Bond angles	
		RMSZ	$\# Z > 5$	RMSZ	$\# Z > 5$
1	A	0.48	1/2094 (0.0%)	0.59	0/2822
1	B	0.50	1/2100 (0.0%)	0.61	1/2826 (0.0%)
1	C	0.44	0/2056	0.56	0/2767
All	All	0.48	2/6250 (0.0%)	0.59	1/8415 (0.0%)

All (2) bond length outliers are listed below:

Mol	Chain	Res	Type	Atoms	Z	Observed(Å)	Ideal(Å)
1	B	261	CYS	C-N	-5.42	1.23	1.33
1	A	261	CYS	C-N	-5.37	1.23	1.33

All (1) bond angle outliers are listed below:

Mol	Chain	Res	Type	Atoms	Z	Observed(°)	Ideal(°)
1	B	109	LEU	CA-CB-CG	5.08	126.99	115.30

There are no chirality outliers.

There are no planarity outliers.

5.2 Too-close contacts [i](#)

In the following table, the Non-H and H(model) columns list the number of non-hydrogen atoms and hydrogen atoms in the chain respectively. The H(added) column lists the number of hydrogen atoms added and optimized by MolProbity. The Clashes column lists the number of clashes within the asymmetric unit, whereas Symm-Clashes lists symmetry related clashes.

Mol	Chain	Non-H	H(model)	H(added)	Clashes	Symm-Clashes
1	A	2058	0	2033	9	1
1	B	2064	0	2066	8	0

Continued on next page...

Continued from previous page...

Mol	Chain	Non-H	H(model)	H(added)	Clashes	Symm-Clashes
1	C	2020	0	2027	13	0
2	A	10	0	5	1	0
2	B	10	0	5	1	0
2	C	10	0	5	1	0
3	A	54	0	44	29	0
3	B	27	0	22	2	0
4	B	5	0	0	0	0
5	B	3	0	0	0	0
5	C	2	0	0	1	0
6	A	174	0	0	13	0
6	B	195	0	0	3	0
6	C	152	0	0	20	1
All	All	6784	0	6207	60	1

The all-atom clashscore is defined as the number of clashes found per 1000 atoms (including hydrogen atoms). The all-atom clashscore for this structure is 5.

All (60) close contacts within the same asymmetric unit are listed below, sorted by their clash magnitude.

Atom-1	Atom-2	Interatomic distance (Å)	Clash overlap (Å)
3:A:310[C]:1NG:C2	6:A:2174:HOH:O	1.69	1.33
3:A:310[A]:1NG:H12A	6:C:2149:HOH:O	1.18	1.31
3:A:310[C]:1NG:H23A	6:A:2071:HOH:O	1.13	1.27
3:A:310[C]:1NG:F1	6:A:2174:HOH:O	1.53	1.07
5:C:1302:ZN:ZN	6:C:2151:HOH:O	1.08	1.01
3:A:310[C]:1NG:H23	6:A:2165:HOH:O	1.59	1.00
3:A:310[A]:1NG:C23	6:C:2145:HOH:O	2.11	0.98
3:A:310[A]:1NG:H23A	6:C:2067:HOH:O	1.64	0.95
3:A:310[C]:1NG:H18	6:C:2068:HOH:O	1.68	0.91
3:A:310[A]:1NG:C13	6:C:2149:HOH:O	2.12	0.85
3:A:310[A]:1NG:C12	6:C:2149:HOH:O	1.83	0.83
3:A:310[C]:1NG:C23	6:A:2165:HOH:O	2.20	0.81
3:A:310[A]:1NG:H23	6:C:2145:HOH:O	1.76	0.78
3:A:310[A]:1NG:C24	6:C:2145:HOH:O	2.32	0.77
1:A:140[B]:SER:HB3	6:A:2090:HOH:O	1.86	0.75
3:A:310[C]:1NG:F4	6:A:2174:HOH:O	1.67	0.74
3:A:310[A]:1NG:F4	6:C:2149:HOH:O	1.95	0.73
3:A:310[A]:1NG:C5	6:C:2149:HOH:O	2.31	0.72
3:A:310[C]:1NG:C18	6:C:2068:HOH:O	2.31	0.70
1:C:22:ASN:HB2	1:C:25:MET:HE2	1.73	0.69
3:A:310[A]:1NG:C2	6:C:2149:HOH:O	2.40	0.68

Continued on next page...

Continued from previous page...

Atom-1	Atom-2	Interatomic distance (Å)	Clash overlap (Å)
3:A:310[C]:1NG:H24	6:A:2152:HOH:O	1.94	0.67
3:A:310[A]:1NG:H24	6:C:2145:HOH:O	1.93	0.67
1:A:108[C]:SER:OG	6:A:2072:HOH:O	2.14	0.65
1:C:198:GLU:OE1	6:C:2115:HOH:O	2.16	0.61
1:A:81:GLY:HA2	6:A:2063:HOH:O	2.00	0.61
3:A:310[A]:1NG:H18	6:A:2072:HOH:O	2.01	0.60
3:A:310[C]:1NG:C5	6:A:2174:HOH:O	2.21	0.59
3:A:310[A]:1NG:H24A	6:C:2067:HOH:O	2.04	0.57
1:C:179:ALA:O	1:C:183:LYS:HD3	2.04	0.57
1:C:125[A]:GLU:HG3	1:C:154:VAL:HG21	1.87	0.56
1:B:23:HIS:CD2	1:B:26:LEU:HD12	2.41	0.55
3:B:310:1NG:H18	6:B:2084:HOH:O	2.05	0.55
1:C:199:TYR:CZ	1:C:203:ARG:HD2	2.42	0.55
1:A:217[A]:SER:HB3	3:A:310[A]:1NG:H23	1.89	0.55
1:B:81:GLY:HA2	6:B:2067:HOH:O	2.06	0.54
1:B:100:ILE:HD12	1:B:223:ALA:HB1	1.90	0.53
1:B:97:GLU:HG2	1:B:102:PHE:HD2	1.74	0.52
1:C:251:LYS:NZ	6:C:2115:HOH:O	2.38	0.51
1:B:218:LYS:HB2	6:B:2076:HOH:O	2.10	0.50
1:C:21:LYS:NZ	1:C:21:LYS:H	2.10	0.50
1:A:91:THR:HG1	2:A:301:GLU:N	2.10	0.49
3:A:310[A]:1NG:C24	6:C:2067:HOH:O	2.57	0.49
1:A:42:GLU:HG3	1:A:246:LEU:HD21	1.94	0.48
1:B:241:LEU:HD22	1:B:246:LEU:HD22	1.95	0.48
1:C:91:THR:HG1	2:C:301:GLU:N	2.11	0.48
1:C:137:THR:HG22	1:C:191:LEU:HB2	1.95	0.47
3:B:310:1NG:H22	3:B:310:1NG:H18A	1.66	0.45
1:A:145[A]:GLU:HG2	6:A:2031:HOH:O	2.17	0.45
1:B:249:LYS:HE3	1:B:249:LYS:HB2	1.85	0.45
3:A:310[C]:1NG:H18A	3:A:310[C]:1NG:H22	1.65	0.44
1:A:137:THR:HG22	1:A:191:LEU:HB2	1.99	0.44
3:A:310[A]:1NG:C23	6:C:2067:HOH:O	2.37	0.44
1:B:91:THR:HG1	2:B:301:GLU:N	2.16	0.44
1:C:128:SER:O	1:C:157:LYS:HE3	2.18	0.43
1:C:81:GLY:HA2	6:C:2056:HOH:O	2.20	0.42
1:C:179:ALA:O	1:C:183:LYS:CD	2.68	0.42
3:A:310[A]:1NG:H18A	3:A:310[A]:1NG:H22	1.49	0.41
1:A:217[A]:SER:OG	3:A:310[A]:1NG:H22	2.20	0.41
1:C:199:TYR:OH	1:C:203:ARG:HD2	2.21	0.41

All (1) symmetry-related close contacts are listed below. The label for Atom-2 includes the symmetry operator and encoded unit-cell translations to be applied.

Atom-1	Atom-2	Interatomic distance (Å)	Clash overlap (Å)
1:A:23:HIS:NE2	6:C:2151:HOH:O[4_557]	2.14	0.06

5.3 Torsion angles [i](#)

5.3.1 Protein backbone [i](#)

In the following table, the Percentiles column shows the percent Ramachandran outliers of the chain as a percentile score with respect to all X-ray entries followed by that with respect to entries of similar resolution.

The Analysed column shows the number of residues for which the backbone conformation was analysed, and the total number of residues.

Mol	Chain	Analysed	Favoured	Allowed	Outliers	Percentiles	
1	A	268/263 (102%)	265 (99%)	3 (1%)	0	100	100
1	B	265/263 (101%)	260 (98%)	5 (2%)	0	100	100
1	C	260/263 (99%)	258 (99%)	2 (1%)	0	100	100
All	All	793/789 (100%)	783 (99%)	10 (1%)	0	100	100

There are no Ramachandran outliers to report.

5.3.2 Protein sidechains [i](#)

In the following table, the Percentiles column shows the percent sidechain outliers of the chain as a percentile score with respect to all X-ray entries followed by that with respect to entries of similar resolution.

The Analysed column shows the number of residues for which the sidechain conformation was analysed, and the total number of residues.

Mol	Chain	Analysed	Rotameric	Outliers	Percentiles	
1	A	216/219 (99%)	215 (100%)	1 (0%)	92	81
1	B	221/219 (101%)	217 (98%)	4 (2%)	66	35
1	C	215/219 (98%)	210 (98%)	5 (2%)	58	24
All	All	652/657 (99%)	642 (98%)	10 (2%)	70	44

All (10) residues with a non-rotameric sidechain are listed below:

Mol	Chain	Res	Type
1	A	109	LEU
1	B	97	GLU
1	B	109	LEU
1	B	226	LYS
1	B	246	LEU
1	C	21	LYS
1	C	109	LEU
1	C	132	GLU
1	C	167	PRO
1	C	226	LYS

Some sidechains can be flipped to improve hydrogen bonding and reduce clashes. There are no such sidechains identified.

5.3.3 RNA [i](#)

There are no RNA molecules in this entry.

5.4 Non-standard residues in protein, DNA, RNA chains [i](#)

There are no non-standard protein/DNA/RNA residues in this entry.

5.5 Carbohydrates [i](#)

There are no carbohydrates in this entry.

5.6 Ligand geometry [i](#)

Of 12 ligands modelled in this entry, 5 are monoatomic - leaving 7 for Mogul analysis.

In the following table, the Counts columns list the number of bonds (or angles) for which Mogul statistics could be retrieved, the number of bonds (or angles) that are observed in the model and the number of bonds (or angles) that are defined in the chemical component dictionary. The Link column lists molecule types, if any, to which the group is linked. The Z score for a bond length (or angle) is the number of standard deviations the observed value is removed from the expected value. A bond length (or angle) with $|Z| > 2$ is considered an outlier worth inspection. RMSZ is the root-mean-square of all Z scores of the bond lengths (or angles).

Mol	Type	Chain	Res	Link	Bond lengths			Bond angles		
					Counts	RMSZ	$\# Z > 2$	Counts	RMSZ	$\# Z > 2$
2	GLU	A	301	-	3,9,9	0.14	0	2,11,11	0.32	0

Mol	Type	Chain	Res	Link	Bond lengths			Bond angles		
					Counts	RMSZ	# Z > 2	Counts	RMSZ	# Z > 2
3	1NG	A	310[A]	-	29,30,30	2.41	4 (13%)	34,44,44	2.28	10 (29%)
3	1NG	A	310[C]	-	29,30,30	2.37	4 (13%)	34,44,44	2.25	10 (29%)
4	SO4	B	1302	5	4,4,4	0.29	0	6,6,6	0.15	0
2	GLU	B	301	-	3,9,9	0.13	0	2,11,11	0.25	0
3	1NG	B	310	-	29,30,30	2.35	4 (13%)	34,44,44	2.43	13 (38%)
2	GLU	C	301	-	3,9,9	0.24	0	2,11,11	0.61	0

In the following table, the Chirals column lists the number of chiral outliers, the number of chiral centers analysed, the number of these observed in the model and the number defined in the chemical component dictionary. Similar counts are reported in the Torsion and Rings columns. '-' means no outliers of that kind were identified.

Mol	Type	Chain	Res	Link	Chirals	Torsions	Rings
2	GLU	A	301	-	-	0/3/9/9	0/0/0/0
3	1NG	A	310[A]	-	-	0/18/32/32	0/4/4/4
3	1NG	A	310[C]	-	-	0/18/32/32	0/4/4/4
4	SO4	B	1302	5	-	0/0/0/0	0/0/0/0
2	GLU	B	301	-	-	0/3/9/9	0/0/0/0
3	1NG	B	310	-	-	0/18/32/32	0/4/4/4
2	GLU	C	301	-	-	0/3/9/9	0/0/0/0

All (12) bond length outliers are listed below:

Mol	Chain	Res	Type	Atoms	Z	Observed(Å)	Ideal(Å)
3	A	310[A]	1NG	C18-C19	-6.64	1.44	1.52
3	B	310	1NG	C18-C19	-6.41	1.44	1.52
3	A	310[C]	1NG	C18-C19	-6.23	1.44	1.52
3	A	310[C]	1NG	C14-N7	-4.46	1.34	1.44
3	A	310[A]	1NG	C14-N7	-4.45	1.34	1.44
3	B	310	1NG	C14-N7	-4.18	1.35	1.44
3	B	310	1NG	C19-N21	4.48	1.45	1.35
3	A	310[A]	1NG	C19-N21	4.55	1.45	1.35
3	A	310[C]	1NG	C19-N21	4.73	1.46	1.35
3	B	310	1NG	O20-C19	8.37	1.42	1.23
3	A	310[C]	1NG	O20-C19	8.50	1.42	1.23
3	A	310[A]	1NG	O20-C19	8.62	1.42	1.23

All (33) bond angle outliers are listed below:

Mol	Chain	Res	Type	Atoms	Z	Observed(°)	Ideal(°)
3	A	310[A]	1NG	O20-C19-C18	-5.68	112.36	121.55

Continued on next page...

Continued from previous page...

Mol	Chain	Res	Type	Atoms	Z	Observed(°)	Ideal(°)
3	B	310	1NG	O20-C19-N21	-5.11	111.10	122.08
3	B	310	1NG	C27-C14-C15	-5.04	113.38	121.21
3	A	310[C]	1NG	O20-C19-N21	-4.66	112.07	122.08
3	A	310[C]	1NG	C27-C14-C15	-4.54	114.16	121.21
3	A	310[C]	1NG	O20-C19-C18	-4.32	114.55	121.55
3	A	310[A]	1NG	O20-C19-N21	-4.27	112.91	122.08
3	A	310[A]	1NG	C27-C14-C15	-4.24	114.63	121.21
3	B	310	1NG	C10-C9-C8	-4.21	105.97	113.18
3	A	310[A]	1NG	C10-C9-C8	-4.15	106.07	113.18
3	B	310	1NG	O20-C19-C18	-3.94	115.17	121.55
3	A	310[A]	1NG	C2-C5-N6	-3.10	115.88	119.68
3	A	310[A]	1NG	F4-C2-C5	-3.05	107.68	112.02
3	B	310	1NG	C2-C5-N6	-2.78	116.28	119.68
3	A	310[C]	1NG	C10-C9-C8	-2.64	108.65	113.18
3	B	310	1NG	C11-C12-C13	-2.38	108.15	113.02
3	B	310	1NG	F4-C2-C5	-2.16	108.95	112.02
3	A	310[C]	1NG	C2-C5-N6	-2.06	117.16	119.68
3	A	310[C]	1NG	C17-C18-C19	2.16	116.38	112.64
3	B	310	1NG	F4-C2-F1	2.20	113.66	105.71
3	A	310[C]	1NG	C2-C5-C13	2.72	132.72	126.88
3	A	310[A]	1NG	C2-C5-C13	2.80	132.90	126.88
3	B	310	1NG	C17-C18-C19	2.90	117.65	112.64
3	B	310	1NG	C2-C5-C13	2.93	133.17	126.88
3	A	310[A]	1NG	C15-C14-N7	3.12	123.79	119.50
3	B	310	1NG	C15-C14-N7	3.59	124.43	119.50
3	A	310[A]	1NG	C16-C15-C14	4.10	123.41	119.23
3	A	310[A]	1NG	C26-C27-C14	4.53	123.84	119.23
3	A	310[C]	1NG	C26-C27-C14	4.55	123.86	119.23
3	B	310	1NG	C16-C15-C14	4.64	123.95	119.23
3	A	310[C]	1NG	C16-C15-C14	4.68	123.99	119.23
3	B	310	1NG	C26-C27-C14	5.02	124.34	119.23
3	A	310[C]	1NG	C15-C14-N7	5.09	126.49	119.50

There are no chirality outliers.

There are no torsion outliers.

There are no ring outliers.

6 monomers are involved in 34 short contacts:

Mol	Chain	Res	Type	Clashes	Symm-Clashes
2	A	301	GLU	1	0
3	A	310[A]	1NG	18	0

Continued on next page...

Continued from previous page...

Mol	Chain	Res	Type	Clashes	Symm-Clashes
3	A	310[C]	1NG	11	0
2	B	301	GLU	1	0
3	B	310	1NG	2	0
2	C	301	GLU	1	0

5.7 Other polymers [i](#)

There are no such residues in this entry.

5.8 Polymer linkage issues [i](#)

There are no chain breaks in this entry.

6 Fit of model and data ⓘ

6.1 Protein, DNA and RNA chains ⓘ

In the following table, the column labelled ‘#RSRZ> 2’ contains the number (and percentage) of RSRZ outliers, followed by percent RSRZ outliers for the chain as percentile scores relative to all X-ray entries and entries of similar resolution. The OWAB column contains the minimum, median, 95th percentile and maximum values of the occupancy-weighted average B-factor per residue. The column labelled ‘Q< 0.9’ lists the number of (and percentage) of residues with an average occupancy less than 0.9.

Mol	Chain	Analysed	<RSRZ>	#RSRZ>2	OWAB(Å ²)	Q<0.9
1	A	262/263 (99%)	0.24	14 (5%) 30 31	12, 19, 32, 42	0
1	B	260/263 (98%)	0.13	8 (3%) 52 55	11, 17, 30, 44	0
1	C	259/263 (98%)	0.28	13 (5%) 32 34	12, 20, 37, 45	0
All	All	781/789 (98%)	0.22	35 (4%) 37 38	11, 19, 33, 45	0

All (35) RSRZ outliers are listed below:

Mol	Chain	Res	Type	RSRZ
1	A	66	ALA	5.7
1	A	1	GLY	5.2
1	C	256	TYR	5.2
1	B	67	ASP	5.0
1	B	66	ALA	4.8
1	C	227	GLY	4.4
1	A	67	ASP	3.9
1	A	68	THR	3.8
1	B	256	TYR	3.7
1	C	131	THR	3.7
1	C	258	LYS	3.6
1	A	227	GLY	3.4
1	C	129	LYS	3.2
1	A	2	ALA	3.1
1	B	227	GLY	3.0
1	C	166	GLU	2.9
1	C	66	ALA	2.8
1	A	3	ASN	2.7
1	A	69	LYS	2.7
1	B	68	THR	2.6
1	B	258	LYS	2.5
1	C	160	THR	2.5
1	B	229	SER	2.4

Continued on next page...

Continued from previous page...

Mol	Chain	Res	Type	RSRZ
1	C	229	SER	2.3
1	A	256	TYR	2.3
1	C	25	MET	2.2
1	A	25[A]	MET	2.2
1	C	183	LYS	2.2
1	C	257	ASP	2.2
1	A	140[A]	SER	2.2
1	C	262	GLY	2.1
1	A	132	GLU	2.1
1	A	229	SER	2.1
1	B	257	ASP	2.1
1	A	22	ASN	2.0

6.2 Non-standard residues in protein, DNA, RNA chains [i](#)

There are no non-standard protein/DNA/RNA residues in this entry.

6.3 Carbohydrates [i](#)

There are no carbohydrates in this entry.

6.4 Ligands [i](#)

In the following table, the Atoms column lists the number of modelled atoms in the group and the number defined in the chemical component dictionary. LLDF column lists the quality of electron density of the group with respect to its neighbouring residues in protein, DNA or RNA chains. The B-factors column lists the minimum, median, 95th percentile and maximum values of B factors of atoms in the group. The column labelled 'Q< 0.9' lists the number of atoms with occupancy less than 0.9.

Mol	Type	Chain	Res	Atoms	RSCC	RSR	LLDF	B-factors(Å ²)	Q<0.9
3	1NG	A	310[C]	27/27	0.90	0.14	3.25	10,15,23,26	27
3	1NG	A	310[A]	27/27	0.90	0.14	3.09	14,21,32,32	27
3	1NG	B	310	27/27	0.93	0.13	2.88	7,16,24,26	27
4	SO4	B	1302	5/5	0.97	0.10	1.00	16,19,31,34	0
2	GLU	C	301	10/10	0.96	0.10	0.13	12,12,17,17	0
2	GLU	A	301	10/10	0.97	0.11	0.01	12,14,17,17	0
2	GLU	B	301	10/10	0.97	0.09	-0.53	11,12,14,15	0
5	ZN	C	1303	1/1	0.97	0.09	-0.97	40,40,40,40	0
5	ZN	B	1304	1/1	0.99	0.03	-1.66	20,20,20,20	0

Continued on next page...

Continued from previous page...

Mol	Type	Chain	Res	Atoms	RSCC	RSR	LLDF	B-factors(\AA^2)	Q<0.9
5	ZN	B	1305	1/1	0.99	0.04	-2.05	19,19,19,19	0
5	ZN	B	1303	1/1	0.99	0.05	-4.69	17,17,17,17	0
5	ZN	C	1302	1/1	0.98	0.06	-	24,24,24,24	0

6.5 Other polymers [i](#)

There are no such residues in this entry.