



# Full wwPDB X-ray Structure Validation Report ⓘ

Feb 1, 2016 – 06:45 AM GMT

PDB ID : 2Y7J  
Title : STRUCTURE OF HUMAN PHOSPHORYLASE KINASE, GAMMA 2  
Authors : Muniz, J.R.C.; Shrestha, A.; Savitsky, P.; Wang, J.; Rellos, P.; Fedorov, O.; Burgess-Brown, N.; Brenner, B.; Berridge, G.; Elkins, J.M.; Krojer, T.; Vollmar, M.; Che, K.H.; Von Delft, F.; Arrowsmith, C.H.; Edwards, A.M.; Weigelt, J.; Bountra, C.; Knapp, S.  
Deposited on : 2011-01-31  
Resolution : 2.50 Å(reported)

This is a Full wwPDB X-ray Structure Validation Report for a publicly released PDB entry.  
We welcome your comments at [validation@mail.wwpdb.org](mailto:validation@mail.wwpdb.org)  
A user guide is available at  
<http://wwpdb.org/validation/2016/XrayValidationReportHelp>  
with specific help available everywhere you see the ⓘ symbol.

---

The following versions of software and data (see [references ⓘ](#)) were used in the production of this report:

MolProbity : 4.02b-467  
Mogul : 1.7 (RC4), CSD as536be (2015)  
Xtriage (Phenix) : 1.9-1692  
EDS : rb-20026688  
Percentile statistics : 20151230.v01 (using entries in the PDB archive December 30th 2015)  
Refmac : 5.8.0135  
CCP4 : 6.5.0  
Ideal geometry (proteins) : Engh & Huber (2001)  
Ideal geometry (DNA, RNA) : Parkinson et al. (1996)  
Validation Pipeline (wwPDB-VP) : trunk26865

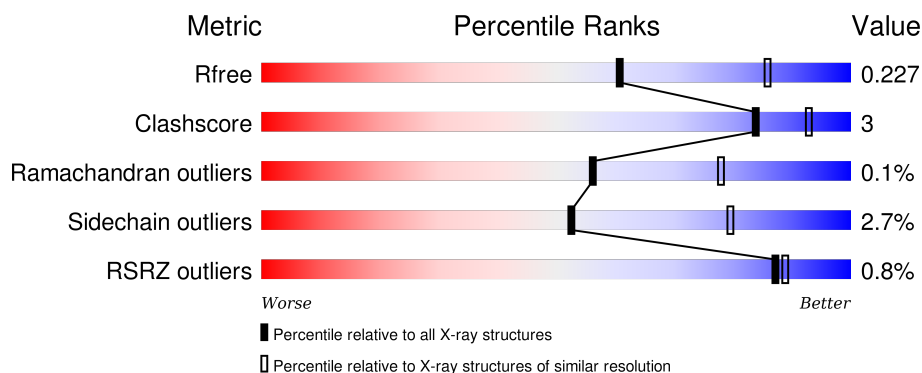
# 1 Overall quality at a glance

The following experimental techniques were used to determine the structure:

## *X-RAY DIFFRACTION*

The reported resolution of this entry is 2.50 Å.

Percentile scores (ranging between 0-100) for global validation metrics of the entry are shown in the following graphic. The table shows the number of entries on which the scores are based.



Metric	Whole archive (#Entries)	Similar resolution (#Entries, resolution range(Å))
$R_{free}$	91344	3553 (2.50-2.50)
Clashscore	102246	4242 (2.50-2.50)
Ramachandran outliers	100387	4156 (2.50-2.50)
Sidechain outliers	100360	4158 (2.50-2.50)
RSRZ outliers	91569	3562 (2.50-2.50)

The table below summarises the geometric issues observed across the polymeric chains and their fit to the electron density. The red, orange, yellow and green segments on the lower bar indicate the fraction of residues that contain outliers for  $\geq 3$ , 2, 1 and 0 types of geometric quality criteria. A grey segment represents the fraction of residues that are not modelled. The numeric value for each fraction is indicated below the corresponding segment, with a dot representing fractions  $\leq 5\%$ . The upper red bar (where present) indicates the fraction of residues that have poor fit to the electron density. The numeric value is given above the bar.

Mol	Chain	Length	Quality of chain
1	A	365	<div> <div style="width: 72%;"></div> <div style="width: 5%; background-color: yellow;"></div> <div style="width: 22%; background-color: grey;"></div> </div> <div> <div style="width: 72%;"></div> <div style="width: 5%; background-color: yellow;"></div> <div style="width: 22%; background-color: grey;"></div> </div>
1	B	365	<div> <div style="width: 71%;"></div> <div style="width: 5%; background-color: yellow;"></div> <div style="width: 23%; background-color: grey;"></div> </div> <div> <div style="width: 71%;"></div> <div style="width: 5%; background-color: yellow;"></div> <div style="width: 23%; background-color: grey;"></div> </div>
1	C	365	<div> <div style="width: 71%;"></div> <div style="width: 7%; background-color: yellow;"></div> <div style="width: 22%; background-color: grey;"></div> </div> <div> <div style="width: 71%;"></div> <div style="width: 7%; background-color: yellow;"></div> <div style="width: 22%; background-color: grey;"></div> </div>
1	D	365	<div> <div style="width: 70%;"></div> <div style="width: 7%; background-color: yellow;"></div> <div style="width: 23%; background-color: grey;"></div> </div> <div> <div style="width: 70%;"></div> <div style="width: 7%; background-color: yellow;"></div> <div style="width: 23%; background-color: grey;"></div> </div>

## 2 Entry composition

There are 3 unique types of molecules in this entry. The entry contains 9378 atoms, of which 0 are hydrogens and 0 are deuteriums.

In the tables below, the ZeroOcc column contains the number of atoms modelled with zero occupancy, the AltConf column contains the number of residues with at least one atom in alternate conformation and the Trace column contains the number of residues modelled with at most 2 atoms.

- Molecule 1 is a protein called PHOSPHORYLASE B KINASE GAMMA CATALYTIC CHAIN, TESTIS/LIVER ISOFORM.

Mol	Chain	Residues	Atoms					ZeroOcc	AltConf	Trace
1	A	284	Total	C	N	O	S	0	2	0
			2285	1457	399	415	14			
1	B	281	Total	C	N	O	S	0	2	0
			2226	1415	383	415	13			
1	C	284	Total	C	N	O	S	0	0	0
			2258	1442	387	415	14			
1	D	281	Total	C	N	O	S	0	0	0
			2210	1411	382	403	14			

There are 308 discrepancies between the modelled and reference sequences:

Chain	Residue	Modelled	Actual	Comment	Reference
A	-71	MET	-	EXPRESSION TAG	UNP P15735
A	-70	HIS	-	EXPRESSION TAG	UNP P15735
A	-69	HIS	-	EXPRESSION TAG	UNP P15735
A	-68	HIS	-	EXPRESSION TAG	UNP P15735
A	-67	HIS	-	EXPRESSION TAG	UNP P15735
A	-66	HIS	-	EXPRESSION TAG	UNP P15735
A	-65	HIS	-	EXPRESSION TAG	UNP P15735
A	-64	SER	-	EXPRESSION TAG	UNP P15735
A	-63	SER	-	EXPRESSION TAG	UNP P15735
A	-62	GLY	-	EXPRESSION TAG	UNP P15735
A	-61	VAL	-	EXPRESSION TAG	UNP P15735
A	-60	ASP	-	EXPRESSION TAG	UNP P15735
A	-59	ASN	-	EXPRESSION TAG	UNP P15735
A	-58	LYS	-	EXPRESSION TAG	UNP P15735
A	-57	PHE	-	EXPRESSION TAG	UNP P15735
A	-56	ASN	-	EXPRESSION TAG	UNP P15735
A	-55	LYS	-	EXPRESSION TAG	UNP P15735
A	-54	GLU	-	EXPRESSION TAG	UNP P15735
A	-53	ARG	-	EXPRESSION TAG	UNP P15735
A	-52	ARG	-	EXPRESSION TAG	UNP P15735

*Continued on next page...*

*Continued from previous page...*

Chain	Residue	Modelled	Actual	Comment	Reference
A	-51	ARG	-	EXPRESSION TAG	UNP P15735
A	-50	ALA	-	EXPRESSION TAG	UNP P15735
A	-49	ARG	-	EXPRESSION TAG	UNP P15735
A	-48	ARG	-	EXPRESSION TAG	UNP P15735
A	-47	GLU	-	EXPRESSION TAG	UNP P15735
A	-46	ILE	-	EXPRESSION TAG	UNP P15735
A	-45	ARG	-	EXPRESSION TAG	UNP P15735
A	-44	HIS	-	EXPRESSION TAG	UNP P15735
A	-43	LEU	-	EXPRESSION TAG	UNP P15735
A	-42	PRO	-	EXPRESSION TAG	UNP P15735
A	-41	ASN	-	EXPRESSION TAG	UNP P15735
A	-40	LEU	-	EXPRESSION TAG	UNP P15735
A	-39	ASN	-	EXPRESSION TAG	UNP P15735
A	-38	ARG	-	EXPRESSION TAG	UNP P15735
A	-37	GLU	-	EXPRESSION TAG	UNP P15735
A	-36	GLN	-	EXPRESSION TAG	UNP P15735
A	-35	ARG	-	EXPRESSION TAG	UNP P15735
A	-34	ARG	-	EXPRESSION TAG	UNP P15735
A	-33	ALA	-	EXPRESSION TAG	UNP P15735
A	-32	PHE	-	EXPRESSION TAG	UNP P15735
A	-31	ILE	-	EXPRESSION TAG	UNP P15735
A	-30	ARG	-	EXPRESSION TAG	UNP P15735
A	-29	SER	-	EXPRESSION TAG	UNP P15735
A	-28	LEU	-	EXPRESSION TAG	UNP P15735
A	-27	ARG	-	EXPRESSION TAG	UNP P15735
A	-26	ASP	-	EXPRESSION TAG	UNP P15735
A	-25	ASP	-	EXPRESSION TAG	UNP P15735
A	-24	PRO	-	EXPRESSION TAG	UNP P15735
A	-23	SER	-	EXPRESSION TAG	UNP P15735
A	-22	GLN	-	EXPRESSION TAG	UNP P15735
A	-21	SER	-	EXPRESSION TAG	UNP P15735
A	-20	ALA	-	EXPRESSION TAG	UNP P15735
A	-19	ASN	-	EXPRESSION TAG	UNP P15735
A	-18	LEU	-	EXPRESSION TAG	UNP P15735
A	-17	LEU	-	EXPRESSION TAG	UNP P15735
A	-16	ALA	-	EXPRESSION TAG	UNP P15735
A	-15	GLU	-	EXPRESSION TAG	UNP P15735
A	-14	ALA	-	EXPRESSION TAG	UNP P15735
A	-13	LYS	-	EXPRESSION TAG	UNP P15735
A	-12	LYS	-	EXPRESSION TAG	UNP P15735
A	-11	LEU	-	EXPRESSION TAG	UNP P15735
A	-10	ASN	-	EXPRESSION TAG	UNP P15735

*Continued on next page...*

*Continued from previous page...*

Chain	Residue	Modelled	Actual	Comment	Reference
A	-9	ASP	-	EXPRESSION TAG	UNP P15735
A	-8	ALA	-	EXPRESSION TAG	UNP P15735
A	-7	GLN	-	EXPRESSION TAG	UNP P15735
A	-6	PRO	-	EXPRESSION TAG	UNP P15735
A	-5	LYS	-	EXPRESSION TAG	UNP P15735
A	-4	GLY	-	EXPRESSION TAG	UNP P15735
A	-3	THR	-	EXPRESSION TAG	UNP P15735
A	-2	GLU	-	EXPRESSION TAG	UNP P15735
A	-1	ASN	-	EXPRESSION TAG	UNP P15735
A	0	LEU	-	EXPRESSION TAG	UNP P15735
A	1	TYR	-	EXPRESSION TAG	UNP P15735
A	2	PHE	-	EXPRESSION TAG	UNP P15735
A	3	GLN	-	EXPRESSION TAG	UNP P15735
A	4	SER	-	EXPRESSION TAG	UNP P15735
A	5	MET	-	EXPRESSION TAG	UNP P15735
B	-71	MET	-	EXPRESSION TAG	UNP P15735
B	-70	HIS	-	EXPRESSION TAG	UNP P15735
B	-69	HIS	-	EXPRESSION TAG	UNP P15735
B	-68	HIS	-	EXPRESSION TAG	UNP P15735
B	-67	HIS	-	EXPRESSION TAG	UNP P15735
B	-66	HIS	-	EXPRESSION TAG	UNP P15735
B	-65	HIS	-	EXPRESSION TAG	UNP P15735
B	-64	SER	-	EXPRESSION TAG	UNP P15735
B	-63	SER	-	EXPRESSION TAG	UNP P15735
B	-62	GLY	-	EXPRESSION TAG	UNP P15735
B	-61	VAL	-	EXPRESSION TAG	UNP P15735
B	-60	ASP	-	EXPRESSION TAG	UNP P15735
B	-59	ASN	-	EXPRESSION TAG	UNP P15735
B	-58	LYS	-	EXPRESSION TAG	UNP P15735
B	-57	PHE	-	EXPRESSION TAG	UNP P15735
B	-56	ASN	-	EXPRESSION TAG	UNP P15735
B	-55	LYS	-	EXPRESSION TAG	UNP P15735
B	-54	GLU	-	EXPRESSION TAG	UNP P15735
B	-53	ARG	-	EXPRESSION TAG	UNP P15735
B	-52	ARG	-	EXPRESSION TAG	UNP P15735
B	-51	ARG	-	EXPRESSION TAG	UNP P15735
B	-50	ALA	-	EXPRESSION TAG	UNP P15735
B	-49	ARG	-	EXPRESSION TAG	UNP P15735
B	-48	ARG	-	EXPRESSION TAG	UNP P15735
B	-47	GLU	-	EXPRESSION TAG	UNP P15735
B	-46	ILE	-	EXPRESSION TAG	UNP P15735
B	-45	ARG	-	EXPRESSION TAG	UNP P15735

*Continued on next page...*

*Continued from previous page...*

Chain	Residue	Modelled	Actual	Comment	Reference
B	-44	HIS	-	EXPRESSION TAG	UNP P15735
B	-43	LEU	-	EXPRESSION TAG	UNP P15735
B	-42	PRO	-	EXPRESSION TAG	UNP P15735
B	-41	ASN	-	EXPRESSION TAG	UNP P15735
B	-40	LEU	-	EXPRESSION TAG	UNP P15735
B	-39	ASN	-	EXPRESSION TAG	UNP P15735
B	-38	ARG	-	EXPRESSION TAG	UNP P15735
B	-37	GLU	-	EXPRESSION TAG	UNP P15735
B	-36	GLN	-	EXPRESSION TAG	UNP P15735
B	-35	ARG	-	EXPRESSION TAG	UNP P15735
B	-34	ARG	-	EXPRESSION TAG	UNP P15735
B	-33	ALA	-	EXPRESSION TAG	UNP P15735
B	-32	PHE	-	EXPRESSION TAG	UNP P15735
B	-31	ILE	-	EXPRESSION TAG	UNP P15735
B	-30	ARG	-	EXPRESSION TAG	UNP P15735
B	-29	SER	-	EXPRESSION TAG	UNP P15735
B	-28	LEU	-	EXPRESSION TAG	UNP P15735
B	-27	ARG	-	EXPRESSION TAG	UNP P15735
B	-26	ASP	-	EXPRESSION TAG	UNP P15735
B	-25	ASP	-	EXPRESSION TAG	UNP P15735
B	-24	PRO	-	EXPRESSION TAG	UNP P15735
B	-23	SER	-	EXPRESSION TAG	UNP P15735
B	-22	GLN	-	EXPRESSION TAG	UNP P15735
B	-21	SER	-	EXPRESSION TAG	UNP P15735
B	-20	ALA	-	EXPRESSION TAG	UNP P15735
B	-19	ASN	-	EXPRESSION TAG	UNP P15735
B	-18	LEU	-	EXPRESSION TAG	UNP P15735
B	-17	LEU	-	EXPRESSION TAG	UNP P15735
B	-16	ALA	-	EXPRESSION TAG	UNP P15735
B	-15	GLU	-	EXPRESSION TAG	UNP P15735
B	-14	ALA	-	EXPRESSION TAG	UNP P15735
B	-13	LYS	-	EXPRESSION TAG	UNP P15735
B	-12	LYS	-	EXPRESSION TAG	UNP P15735
B	-11	LEU	-	EXPRESSION TAG	UNP P15735
B	-10	ASN	-	EXPRESSION TAG	UNP P15735
B	-9	ASP	-	EXPRESSION TAG	UNP P15735
B	-8	ALA	-	EXPRESSION TAG	UNP P15735
B	-7	GLN	-	EXPRESSION TAG	UNP P15735
B	-6	PRO	-	EXPRESSION TAG	UNP P15735
B	-5	LYS	-	EXPRESSION TAG	UNP P15735
B	-4	GLY	-	EXPRESSION TAG	UNP P15735
B	-3	THR	-	EXPRESSION TAG	UNP P15735

*Continued on next page...*

*Continued from previous page...*

Chain	Residue	Modelled	Actual	Comment	Reference
B	-2	GLU	-	EXPRESSION TAG	UNP P15735
B	-1	ASN	-	EXPRESSION TAG	UNP P15735
B	0	LEU	-	EXPRESSION TAG	UNP P15735
B	1	TYR	-	EXPRESSION TAG	UNP P15735
B	2	PHE	-	EXPRESSION TAG	UNP P15735
B	3	GLN	-	EXPRESSION TAG	UNP P15735
B	4	SER	-	EXPRESSION TAG	UNP P15735
B	5	MET	-	EXPRESSION TAG	UNP P15735
C	-71	MET	-	EXPRESSION TAG	UNP P15735
C	-70	HIS	-	EXPRESSION TAG	UNP P15735
C	-69	HIS	-	EXPRESSION TAG	UNP P15735
C	-68	HIS	-	EXPRESSION TAG	UNP P15735
C	-67	HIS	-	EXPRESSION TAG	UNP P15735
C	-66	HIS	-	EXPRESSION TAG	UNP P15735
C	-65	HIS	-	EXPRESSION TAG	UNP P15735
C	-64	SER	-	EXPRESSION TAG	UNP P15735
C	-63	SER	-	EXPRESSION TAG	UNP P15735
C	-62	GLY	-	EXPRESSION TAG	UNP P15735
C	-61	VAL	-	EXPRESSION TAG	UNP P15735
C	-60	ASP	-	EXPRESSION TAG	UNP P15735
C	-59	ASN	-	EXPRESSION TAG	UNP P15735
C	-58	LYS	-	EXPRESSION TAG	UNP P15735
C	-57	PHE	-	EXPRESSION TAG	UNP P15735
C	-56	ASN	-	EXPRESSION TAG	UNP P15735
C	-55	LYS	-	EXPRESSION TAG	UNP P15735
C	-54	GLU	-	EXPRESSION TAG	UNP P15735
C	-53	ARG	-	EXPRESSION TAG	UNP P15735
C	-52	ARG	-	EXPRESSION TAG	UNP P15735
C	-51	ARG	-	EXPRESSION TAG	UNP P15735
C	-50	ALA	-	EXPRESSION TAG	UNP P15735
C	-49	ARG	-	EXPRESSION TAG	UNP P15735
C	-48	ARG	-	EXPRESSION TAG	UNP P15735
C	-47	GLU	-	EXPRESSION TAG	UNP P15735
C	-46	ILE	-	EXPRESSION TAG	UNP P15735
C	-45	ARG	-	EXPRESSION TAG	UNP P15735
C	-44	HIS	-	EXPRESSION TAG	UNP P15735
C	-43	LEU	-	EXPRESSION TAG	UNP P15735
C	-42	PRO	-	EXPRESSION TAG	UNP P15735
C	-41	ASN	-	EXPRESSION TAG	UNP P15735
C	-40	LEU	-	EXPRESSION TAG	UNP P15735
C	-39	ASN	-	EXPRESSION TAG	UNP P15735
C	-38	ARG	-	EXPRESSION TAG	UNP P15735

*Continued on next page...*

*Continued from previous page...*

Chain	Residue	Modelled	Actual	Comment	Reference
C	-37	GLU	-	EXPRESSION TAG	UNP P15735
C	-36	GLN	-	EXPRESSION TAG	UNP P15735
C	-35	ARG	-	EXPRESSION TAG	UNP P15735
C	-34	ARG	-	EXPRESSION TAG	UNP P15735
C	-33	ALA	-	EXPRESSION TAG	UNP P15735
C	-32	PHE	-	EXPRESSION TAG	UNP P15735
C	-31	ILE	-	EXPRESSION TAG	UNP P15735
C	-30	ARG	-	EXPRESSION TAG	UNP P15735
C	-29	SER	-	EXPRESSION TAG	UNP P15735
C	-28	LEU	-	EXPRESSION TAG	UNP P15735
C	-27	ARG	-	EXPRESSION TAG	UNP P15735
C	-26	ASP	-	EXPRESSION TAG	UNP P15735
C	-25	ASP	-	EXPRESSION TAG	UNP P15735
C	-24	PRO	-	EXPRESSION TAG	UNP P15735
C	-23	SER	-	EXPRESSION TAG	UNP P15735
C	-22	GLN	-	EXPRESSION TAG	UNP P15735
C	-21	SER	-	EXPRESSION TAG	UNP P15735
C	-20	ALA	-	EXPRESSION TAG	UNP P15735
C	-19	ASN	-	EXPRESSION TAG	UNP P15735
C	-18	LEU	-	EXPRESSION TAG	UNP P15735
C	-17	LEU	-	EXPRESSION TAG	UNP P15735
C	-16	ALA	-	EXPRESSION TAG	UNP P15735
C	-15	GLU	-	EXPRESSION TAG	UNP P15735
C	-14	ALA	-	EXPRESSION TAG	UNP P15735
C	-13	LYS	-	EXPRESSION TAG	UNP P15735
C	-12	LYS	-	EXPRESSION TAG	UNP P15735
C	-11	LEU	-	EXPRESSION TAG	UNP P15735
C	-10	ASN	-	EXPRESSION TAG	UNP P15735
C	-9	ASP	-	EXPRESSION TAG	UNP P15735
C	-8	ALA	-	EXPRESSION TAG	UNP P15735
C	-7	GLN	-	EXPRESSION TAG	UNP P15735
C	-6	PRO	-	EXPRESSION TAG	UNP P15735
C	-5	LYS	-	EXPRESSION TAG	UNP P15735
C	-4	GLY	-	EXPRESSION TAG	UNP P15735
C	-3	THR	-	EXPRESSION TAG	UNP P15735
C	-2	GLU	-	EXPRESSION TAG	UNP P15735
C	-1	ASN	-	EXPRESSION TAG	UNP P15735
C	0	LEU	-	EXPRESSION TAG	UNP P15735
C	1	TYR	-	EXPRESSION TAG	UNP P15735
C	2	PHE	-	EXPRESSION TAG	UNP P15735
C	3	GLN	-	EXPRESSION TAG	UNP P15735
C	4	SER	-	EXPRESSION TAG	UNP P15735

*Continued on next page...*



*Continued from previous page...*

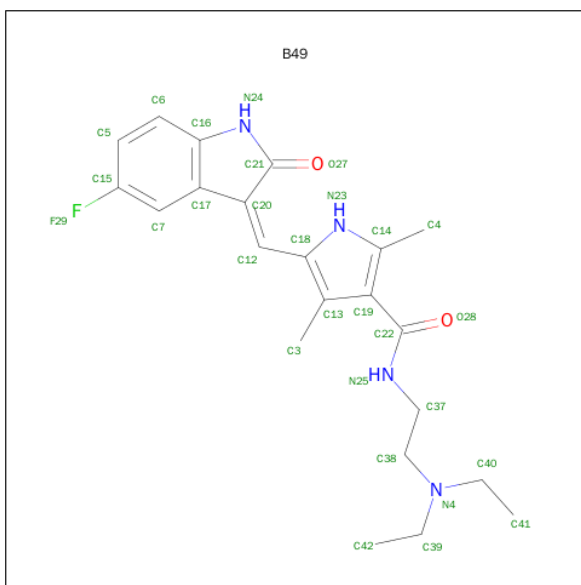
Chain	Residue	Modelled	Actual	Comment	Reference
C	5	MET	-	EXPRESSION TAG	UNP P15735
D	-71	MET	-	EXPRESSION TAG	UNP P15735
D	-70	HIS	-	EXPRESSION TAG	UNP P15735
D	-69	HIS	-	EXPRESSION TAG	UNP P15735
D	-68	HIS	-	EXPRESSION TAG	UNP P15735
D	-67	HIS	-	EXPRESSION TAG	UNP P15735
D	-66	HIS	-	EXPRESSION TAG	UNP P15735
D	-65	HIS	-	EXPRESSION TAG	UNP P15735
D	-64	SER	-	EXPRESSION TAG	UNP P15735
D	-63	SER	-	EXPRESSION TAG	UNP P15735
D	-62	GLY	-	EXPRESSION TAG	UNP P15735
D	-61	VAL	-	EXPRESSION TAG	UNP P15735
D	-60	ASP	-	EXPRESSION TAG	UNP P15735
D	-59	ASN	-	EXPRESSION TAG	UNP P15735
D	-58	LYS	-	EXPRESSION TAG	UNP P15735
D	-57	PHE	-	EXPRESSION TAG	UNP P15735
D	-56	ASN	-	EXPRESSION TAG	UNP P15735
D	-55	LYS	-	EXPRESSION TAG	UNP P15735
D	-54	GLU	-	EXPRESSION TAG	UNP P15735
D	-53	ARG	-	EXPRESSION TAG	UNP P15735
D	-52	ARG	-	EXPRESSION TAG	UNP P15735
D	-51	ARG	-	EXPRESSION TAG	UNP P15735
D	-50	ALA	-	EXPRESSION TAG	UNP P15735
D	-49	ARG	-	EXPRESSION TAG	UNP P15735
D	-48	ARG	-	EXPRESSION TAG	UNP P15735
D	-47	GLU	-	EXPRESSION TAG	UNP P15735
D	-46	ILE	-	EXPRESSION TAG	UNP P15735
D	-45	ARG	-	EXPRESSION TAG	UNP P15735
D	-44	HIS	-	EXPRESSION TAG	UNP P15735
D	-43	LEU	-	EXPRESSION TAG	UNP P15735
D	-42	PRO	-	EXPRESSION TAG	UNP P15735
D	-41	ASN	-	EXPRESSION TAG	UNP P15735
D	-40	LEU	-	EXPRESSION TAG	UNP P15735
D	-39	ASN	-	EXPRESSION TAG	UNP P15735
D	-38	ARG	-	EXPRESSION TAG	UNP P15735
D	-37	GLU	-	EXPRESSION TAG	UNP P15735
D	-36	GLN	-	EXPRESSION TAG	UNP P15735
D	-35	ARG	-	EXPRESSION TAG	UNP P15735
D	-34	ARG	-	EXPRESSION TAG	UNP P15735
D	-33	ALA	-	EXPRESSION TAG	UNP P15735
D	-32	PHE	-	EXPRESSION TAG	UNP P15735
D	-31	ILE	-	EXPRESSION TAG	UNP P15735

*Continued on next page...*

*Continued from previous page...*

Chain	Residue	Modelled	Actual	Comment	Reference
D	-30	ARG	-	EXPRESSION TAG	UNP P15735
D	-29	SER	-	EXPRESSION TAG	UNP P15735
D	-28	LEU	-	EXPRESSION TAG	UNP P15735
D	-27	ARG	-	EXPRESSION TAG	UNP P15735
D	-26	ASP	-	EXPRESSION TAG	UNP P15735
D	-25	ASP	-	EXPRESSION TAG	UNP P15735
D	-24	PRO	-	EXPRESSION TAG	UNP P15735
D	-23	SER	-	EXPRESSION TAG	UNP P15735
D	-22	GLN	-	EXPRESSION TAG	UNP P15735
D	-21	SER	-	EXPRESSION TAG	UNP P15735
D	-20	ALA	-	EXPRESSION TAG	UNP P15735
D	-19	ASN	-	EXPRESSION TAG	UNP P15735
D	-18	LEU	-	EXPRESSION TAG	UNP P15735
D	-17	LEU	-	EXPRESSION TAG	UNP P15735
D	-16	ALA	-	EXPRESSION TAG	UNP P15735
D	-15	GLU	-	EXPRESSION TAG	UNP P15735
D	-14	ALA	-	EXPRESSION TAG	UNP P15735
D	-13	LYS	-	EXPRESSION TAG	UNP P15735
D	-12	LYS	-	EXPRESSION TAG	UNP P15735
D	-11	LEU	-	EXPRESSION TAG	UNP P15735
D	-10	ASN	-	EXPRESSION TAG	UNP P15735
D	-9	ASP	-	EXPRESSION TAG	UNP P15735
D	-8	ALA	-	EXPRESSION TAG	UNP P15735
D	-7	GLN	-	EXPRESSION TAG	UNP P15735
D	-6	PRO	-	EXPRESSION TAG	UNP P15735
D	-5	LYS	-	EXPRESSION TAG	UNP P15735
D	-4	GLY	-	EXPRESSION TAG	UNP P15735
D	-3	THR	-	EXPRESSION TAG	UNP P15735
D	-2	GLU	-	EXPRESSION TAG	UNP P15735
D	-1	ASN	-	EXPRESSION TAG	UNP P15735
D	0	LEU	-	EXPRESSION TAG	UNP P15735
D	1	TYR	-	EXPRESSION TAG	UNP P15735
D	2	PHE	-	EXPRESSION TAG	UNP P15735
D	3	GLN	-	EXPRESSION TAG	UNP P15735
D	4	SER	-	EXPRESSION TAG	UNP P15735
D	5	MET	-	EXPRESSION TAG	UNP P15735

- Molecule 2 is N-[2-(DIETHYLAMINO)ETHYL]-5-[(Z)-(5-FLUORO-2-OXO-1,2-DIHYDRO-3H-INDOL-3-YLIDENE)METHYL]-2,4-DIMETHYL-1H-PYRROLE-3-CARBOXAMIDE (three-letter code: B49) (formula: C<sub>22</sub>H<sub>27</sub>FN<sub>4</sub>O<sub>2</sub>).



Mol	Chain	Residues	Atoms					ZeroOcc	AltConf
2	A	1	Total	C	F	N	O	0	0
			29	22	1	4	2		
2	B	1	Total	C	F	N	O	0	0
			29	22	1	4	2		
2	C	1	Total	C	F	N	O	0	0
			29	22	1	4	2		
2	D	1	Total	C	F	N	O	0	0
			29	22	1	4	2		

- Molecule 3 is water.

Mol	Chain	Residues	Atoms		ZeroOcc	AltConf
3	A	91	Total	O	0	0
			91	91		
3	B	60	Total	O	0	0
			60	60		
3	C	76	Total	O	0	0
			76	76		
3	D	56	Total	O	0	0
			56	56		

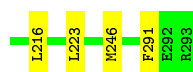


- Molecule 1: PHOSPHORYLASE B KINASE GAMMA CATALYTIC CHAIN, TESTIS/LIVER ISOFORM

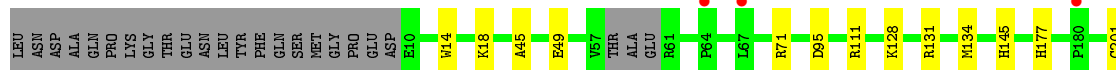
- Molecule 1: PHOSPHORYLASE B KINASE GAMMA CATALYTIC CHAIN, TESTIS/LIVER ISOFORM

- Molecule 1: PHOSPHORYLASE B KINASE GAMMA CATALYTIC CHAIN, TESTIS/LIVER ISOFORM

LEU	ASN	ASP	ALA	GLN	PRO	GLY	LYS	THR	GLU	ASN	LEU	ASP	TYR	PHE	GLN	SER	MET	GLY	PRO	GLU	ARG	ASP	ALA	ARG	GLU	ILE	ARG	HIS	LEU	PRO	ASN	LEU	ARG	GLN	ARG	ALA	ARG	PHE	ILE	ARG	SER	LEU	ARG	ASP	ASP	PRO	SER	GLN	ALA	ASN	LEU	ALA	GLU	ALA	LYS	PRO
-----	-----	-----	-----	-----	-----	-----	-----	-----	-----	-----	-----	-----	-----	-----	-----	-----	-----	-----	-----	-----	-----	-----	-----	-----	-----	-----	-----	-----	-----	-----	-----	-----	-----	-----	-----	-----	-----	-----	-----	-----	-----	-----	-----	-----	-----	-----	-----	-----	-----	-----	-----	-----	-----	-----	-----	-----



- Molecule 1: PHOSPHORYLASE B KINASE GAMMA CATALYTIC CHAIN, TESTIS/LIVER ISOFORM



## 4 Data and refinement statistics

Property	Value	Source
Space group	P 21 21 21	Depositor
Cell constants a, b, c, $\alpha$ , $\beta$ , $\gamma$	87.79Å 91.42Å 164.48Å 90.00° 90.00° 90.00°	Depositor
Resolution (Å)	61.14 – 2.50 61.14 – 2.50	Depositor EDS
% Data completeness (in resolution range)	(Not available) (61.14-2.50) 99.4 (61.14-2.50)	Depositor EDS
$R_{merge}$	0.04	Depositor
$R_{sym}$	(Not available)	Depositor
$\langle I/\sigma(I) \rangle$ <sup>1</sup>	1.90 (at 2.51Å)	Xtriage
Refinement program	BUSTER 2.8.0	Depositor
R, $R_{free}$	0.182 , 0.216 0.190 , 0.227	Depositor DCC
$R_{free}$ test set	2343 reflections (5.33%)	DCC
Wilson B-factor (Å <sup>2</sup> )	42.7	Xtriage
Anisotropy	0.253	Xtriage
Bulk solvent $k_{sol}$ (e/Å <sup>3</sup> ), $B_{sol}$ (Å <sup>2</sup> )	0.35 , 53.8	EDS
Estimated twinning fraction	0.027 for k,h,-l	Xtriage
L-test for twinning <sup>2</sup>	$\langle  L  \rangle = 0.48$ , $\langle L^2 \rangle = 0.31$	Xtriage
Outliers	0 of 46354 reflections	Xtriage
$F_o, F_c$ correlation	0.94	EDS
Total number of atoms	9378	wwPDB-VP
Average B, all atoms (Å <sup>2</sup> )	51.0	wwPDB-VP

Xtriage's analysis on translational NCS is as follows: *The largest off-origin peak in the Patterson function is 3.10% of the height of the origin peak. No significant pseudotranslation is detected.*

<sup>1</sup>Intensities estimated from amplitudes.

<sup>2</sup>Theoretical values of  $\langle |L| \rangle$ ,  $\langle L^2 \rangle$  for acentric reflections are 0.5, 0.375 respectively for untwinned datasets, and 0.333, 0.2 for perfectly twinned datasets.

## 5 Model quality [i](#)

### 5.1 Standard geometry [i](#)

Bond lengths and bond angles in the following residue types are not validated in this section: B49

The Z score for a bond length (or angle) is the number of standard deviations the observed value is removed from the expected value. A bond length (or angle) with  $|Z| > 5$  is considered an outlier worth inspection. RMSZ is the root-mean-square of all Z scores of the bond lengths (or angles).

Mol	Chain	Bond lengths		Bond angles	
		RMSZ	$\# Z  > 5$	RMSZ	$\# Z  > 5$
1	A	0.52	0/2339	0.68	0/3166
1	B	0.49	0/2278	0.66	0/3086
1	C	0.51	0/2311	0.67	0/3130
1	D	0.50	0/2262	0.66	0/3065
All	All	0.50	0/9190	0.67	0/12447

There are no bond length outliers.

There are no bond angle outliers.

There are no chirality outliers.

There are no planarity outliers.

### 5.2 Too-close contacts [i](#)

In the following table, the Non-H and H(model) columns list the number of non-hydrogen atoms and hydrogen atoms in the chain respectively. The H(added) column lists the number of hydrogen atoms added and optimized by MolProbity. The Clashes column lists the number of clashes within the asymmetric unit, whereas Symm-Clashes lists symmetry related clashes.

Mol	Chain	Non-H	H(model)	H(added)	Clashes	Symm-Clashes
1	A	2285	0	2235	12	1
1	B	2226	0	2126	20	0
1	C	2258	0	2202	15	0
1	D	2210	0	2126	21	1
2	A	29	0	27	1	0
2	B	29	0	27	2	0
2	C	29	0	27	1	0
2	D	29	0	27	0	0
3	A	91	0	0	0	0

*Continued on next page...*

*Continued from previous page...*

Mol	Chain	Non-H	H(model)	H(added)	Clashes	Symm-Clashes
3	B	60	0	0	0	0
3	C	76	0	0	1	0
3	D	56	0	0	1	0
All	All	9378	0	8797	54	1

The all-atom clashscore is defined as the number of clashes found per 1000 atoms (including hydrogen atoms). The all-atom clashscore for this structure is 3.

All (54) close contacts within the same asymmetric unit are listed below, sorted by their clash magnitude.

Atom-1	Atom-2	Interatomic distance (Å)	Clash overlap (Å)
1:B:159:ILE:HG22	1:B:167:ILE:HD12	1.59	0.85
1:B:194:LEU:HD11	1:D:239:ILE:HG12	1.62	0.80
1:B:159:ILE:CG2	1:B:167:ILE:HD12	2.18	0.74
1:B:246:MET:SD	1:D:203:MET:HG3	2.30	0.71
1:B:280:LEU:HD22	1:B:284:GLN:HB3	1.74	0.69
1:C:98:GLU:HG2	1:C:103:MET:SD	2.35	0.67
1:A:203:MET:HB2	1:C:246:MET:HE2	1.78	0.65
1:B:203:MET:HG3	1:D:203:MET:HB2	1.79	0.64
1:B:134:MET:HG3	1:B:223:LEU:HD13	1.79	0.64
1:C:134:MET:HG3	1:C:223:LEU:HD13	1.81	0.61
1:A:134:MET:HG3	1:A:223:LEU:HD13	1.80	0.61
2:B:1294:B49:H23	2:B:1294:B49:H14	1.83	0.60
1:D:134:MET:HG3	1:D:223:LEU:HD13	1.82	0.60
1:A:203:MET:HB2	1:C:246:MET:CE	2.35	0.56
1:B:203:MET:SD	1:D:246:MET:SD	3.04	0.55
1:D:145:HIS:CE1	1:D:212:LYS:HB2	2.42	0.55
1:B:203:MET:CE	1:D:203:MET:SD	2.95	0.54
1:A:32[B]:ARG:HG2	1:A:37:VAL:HG23	1.90	0.53
1:B:203:MET:HG3	1:D:203:MET:CB	2.39	0.53
1:B:161:LEU:HD23	1:B:167:ILE:HD13	1.91	0.53
1:A:18:LYS:HG3	1:D:14:TRP:CE3	2.45	0.52
1:B:58:THR:HG23	1:C:39:ARG:HH22	1.73	0.52
1:B:145:HIS:CE1	1:B:212:LYS:HB2	2.45	0.52
1:B:216:LEU:HD21	1:B:282:ALA:HA	1.93	0.51
1:B:194:LEU:CD1	1:D:239:ILE:HG12	2.38	0.50
1:A:280:LEU:HD22	1:A:284:GLN:HB3	1.93	0.50
1:D:49:GLU:OE1	1:D:111:ARG:NH1	2.38	0.50
1:D:242:LEU:HA	1:D:245:ILE:HD12	1.93	0.49
2:A:1294:B49:H3	2:A:1294:B49:HN25	1.76	0.49
1:B:203:MET:HE2	1:D:203:MET:SD	2.54	0.47

*Continued on next page...*



Continued from previous page...

Atom-1	Atom-2	Interatomic distance (Å)	Clash overlap (Å)
1:C:83:GLN:HE22	1:C:177:HIS:HE1	1.60	0.47
1:A:14:TRP:CE3	1:D:18:LYS:HG3	2.50	0.47
1:A:14:TRP:HE3	1:D:18:LYS:HG3	1.81	0.46
1:C:26:PRO:HG2	3:C:2015:HOH:O	2.14	0.46
1:C:18:LYS:O	1:C:22:GLN:HB2	2.15	0.46
1:A:21:TYR:HE1	1:A:26:PRO:HG3	1.81	0.46
1:D:128:LYS:HA	1:D:131:ARG:HH12	1.81	0.46
1:A:18:LYS:HG3	1:D:14:TRP:HE3	1.80	0.46
2:C:1294:B49:H3	2:C:1294:B49:HN25	1.80	0.45
1:D:128:LYS:HA	1:D:131:ARG:NH1	2.32	0.44
2:B:1294:B49:H23	2:B:1294:B49:C37	2.48	0.44
1:B:161:LEU:HD23	1:B:167:ILE:CD1	2.47	0.43
1:C:135:ARG:NH2	1:C:291:PHE:O	2.52	0.43
1:C:145:HIS:CE1	1:C:212:LYS:HB2	2.54	0.43
1:A:239:ILE:HD11	1:C:202:SER:HB2	2.00	0.43
1:B:203:MET:HE3	1:D:203:MET:SD	2.59	0.42
1:C:197:GLU:O	1:C:201:CYS:HB2	2.20	0.42
1:A:239:ILE:HD12	1:C:203:MET:HG3	2.00	0.42
1:C:161:LEU:HD23	1:C:167:ILE:HG22	2.01	0.41
1:B:148:ASN:HB3	1:B:178:LEU:O	2.20	0.41
1:D:231:PRO:HB2	3:D:2051:HOH:O	2.20	0.41
1:C:55:MET:HB2	1:C:103:MET:HB2	2.00	0.41
1:D:216:LEU:HD21	1:D:282:ALA:HA	2.02	0.41
1:B:231:PRO:HG2	1:B:234:TRP:HB2	2.02	0.41

All (1) symmetry-related close contacts are listed below. The label for Atom-2 includes the symmetry operator and encoded unit-cell translations to be applied.

Atom-1	Atom-2	Interatomic distance (Å)	Clash overlap (Å)
1:A:208:PRO:O	1:D:45:ALA:O[3_445]	2.11	0.09

## 5.3 Torsion angles ⓘ

### 5.3.1 Protein backbone ⓘ

In the following table, the Percentiles column shows the percent Ramachandran outliers of the chain as a percentile score with respect to all X-ray entries followed by that with respect to entries of similar resolution.

The Analysed column shows the number of residues for which the backbone conformation was

analysed, and the total number of residues.

Mol	Chain	Analysed	Favoured	Allowed	Outliers	Percentiles	
1	A	284/365 (78%)	278 (98%)	6 (2%)	0	100	100
1	B	279/365 (76%)	267 (96%)	11 (4%)	1 (0%)	39	61
1	C	282/365 (77%)	274 (97%)	8 (3%)	0	100	100
1	D	277/365 (76%)	270 (98%)	7 (2%)	0	100	100
All	All	1122/1460 (77%)	1089 (97%)	32 (3%)	1 (0%)	56	78

All (1) Ramachandran outliers are listed below:

Mol	Chain	Res	Type
1	B	58	THR

### 5.3.2 Protein sidechains ⓘ

In the following table, the Percentiles column shows the percent sidechain outliers of the chain as a percentile score with respect to all X-ray entries followed by that with respect to entries of similar resolution.

The Analysed column shows the number of residues for which the sidechain conformation was analysed, and the total number of residues.

Mol	Chain	Analysed	Rotameric	Outliers	Percentiles	
1	A	244/325 (75%)	234 (96%)	10 (4%)	37	63
1	B	234/325 (72%)	229 (98%)	5 (2%)	61	85
1	C	241/325 (74%)	236 (98%)	5 (2%)	61	85
1	D	231/325 (71%)	223 (96%)	8 (4%)	43	70
All	All	950/1300 (73%)	922 (97%)	28 (3%)	52	77

All (28) residues with a non-rotameric sidechain are listed below:

Mol	Chain	Res	Type
1	A	32[A]	ARG
1	A	32[B]	ARG
1	A	95	ASP
1	A	102	PHE
1	A	171	ASP
1	A	185	ARG
1	A	201	CYS
1	A	216	LEU

*Continued on next page...*

*Continued from previous page...*

Mol	Chain	Res	Type
1	A	239	ILE
1	A	254	SER
1	B	95	ASP
1	B	171[A]	ASP
1	B	171[B]	ASP
1	B	200	LYS
1	B	216	LEU
1	C	10	GLU
1	C	95	ASP
1	C	102	PHE
1	C	167	ILE
1	C	216	LEU
1	D	71	ARG
1	D	95	ASP
1	D	177	HIS
1	D	201	CYS
1	D	203	MET
1	D	234	TRP
1	D	244	MET
1	D	259	ASP

Some sidechains can be flipped to improve hydrogen bonding and reduce clashes. All (1) such sidechains are listed below:

Mol	Chain	Res	Type
1	C	177	HIS

### 5.3.3 RNA ⓘ

There are no RNA molecules in this entry.

## 5.4 Non-standard residues in protein, DNA, RNA chains ⓘ

There are no non-standard protein/DNA/RNA residues in this entry.

## 5.5 Carbohydrates ⓘ

There are no carbohydrates in this entry.

## 5.6 Ligand geometry

4 ligands are modelled in this entry.

In the following table, the Counts columns list the number of bonds (or angles) for which Mogul statistics could be retrieved, the number of bonds (or angles) that are observed in the model and the number of bonds (or angles) that are defined in the chemical component dictionary. The Link column lists molecule types, if any, to which the group is linked. The Z score for a bond length (or angle) is the number of standard deviations the observed value is removed from the expected value. A bond length (or angle) with  $|Z| > 2$  is considered an outlier worth inspection. RMSZ is the root-mean-square of all Z scores of the bond lengths (or angles).

Mol	Type	Chain	Res	Link	Bond lengths			Bond angles		
					Counts	RMSZ	# $ Z  > 2$	Counts	RMSZ	# $ Z  > 2$
2	B49	A	1294	-	27,31,31	3.17	14 (51%)	32,44,44	3.74	14 (43%)
2	B49	B	1294	-	27,31,31	3.89	22 (81%)	32,44,44	4.59	15 (46%)
2	B49	C	1294	-	27,31,31	3.67	17 (62%)	32,44,44	3.96	14 (43%)
2	B49	D	1294	-	27,31,31	3.33	14 (51%)	32,44,44	3.70	13 (40%)

In the following table, the Chirals column lists the number of chiral outliers, the number of chiral centers analysed, the number of these observed in the model and the number defined in the chemical component dictionary. Similar counts are reported in the Torsion and Rings columns. '-' means no outliers of that kind were identified.

Mol	Type	Chain	Res	Link	Chirals	Torsions	Rings
2	B49	A	1294	-	-	0/14/30/30	0/3/3/3
2	B49	B	1294	-	-	0/14/30/30	0/3/3/3
2	B49	C	1294	-	-	0/14/30/30	0/3/3/3
2	B49	D	1294	-	-	0/14/30/30	0/3/3/3

All (67) bond length outliers are listed below:

Mol	Chain	Res	Type	Atoms	Z	Observed(Å)	Ideal(Å)
2	B	1294	B49	C20-C21	-6.05	1.42	1.50
2	B	1294	B49	C37-N25	-4.92	1.34	1.46
2	A	1294	B49	F29-C15	-4.74	1.25	1.36
2	A	1294	B49	C20-C21	-4.62	1.44	1.50
2	C	1294	B49	F29-C15	-4.37	1.26	1.36
2	C	1294	B49	C20-C21	-4.06	1.45	1.50
2	A	1294	B49	C19-C22	-3.71	1.45	1.51
2	B	1294	B49	C19-C22	-3.50	1.45	1.51
2	D	1294	B49	C37-N25	-3.40	1.38	1.46
2	D	1294	B49	F29-C15	-3.30	1.28	1.36
2	C	1294	B49	C37-N25	-3.28	1.38	1.46

*Continued on next page...*

*Continued from previous page...*

Mol	Chain	Res	Type	Atoms	Z	Observed(Å)	Ideal(Å)
2	C	1294	B49	O27-C21	-3.03	1.17	1.23
2	D	1294	B49	C20-C21	-2.99	1.46	1.50
2	A	1294	B49	C37-N25	-2.95	1.39	1.46
2	B	1294	B49	C22-N25	-2.91	1.27	1.33
2	A	1294	B49	C17-C20	-2.73	1.40	1.45
2	A	1294	B49	O27-C21	-2.67	1.18	1.23
2	B	1294	B49	O28-C22	-2.52	1.18	1.23
2	C	1294	B49	C4-C14	-2.44	1.45	1.50
2	B	1294	B49	C17-C20	-2.37	1.41	1.45
2	D	1294	B49	C19-C22	-2.34	1.47	1.51
2	C	1294	B49	O28-C22	-2.11	1.19	1.23
2	B	1294	B49	C6-C5	-2.08	1.35	1.38
2	B	1294	B49	C4-C14	-2.08	1.46	1.50
2	B	1294	B49	O27-C21	-2.06	1.19	1.23
2	B	1294	B49	F29-C15	-2.05	1.31	1.36
2	B	1294	B49	C39-N4	2.20	1.59	1.48
2	B	1294	B49	C17-C16	2.45	1.44	1.41
2	A	1294	B49	C16-N24	2.57	1.43	1.38
2	C	1294	B49	C12-C20	2.58	1.38	1.34
2	C	1294	B49	C16-N24	2.60	1.43	1.38
2	C	1294	B49	C3-C13	2.78	1.57	1.51
2	B	1294	B49	C38-N4	2.85	1.54	1.47
2	B	1294	B49	C7-C17	2.87	1.44	1.39
2	D	1294	B49	C40-N4	2.97	1.64	1.48
2	D	1294	B49	C17-C16	2.99	1.45	1.41
2	D	1294	B49	C7-C15	3.20	1.43	1.37
2	A	1294	B49	C40-N4	3.27	1.65	1.48
2	A	1294	B49	C17-C16	3.30	1.45	1.41
2	B	1294	B49	C40-N4	3.40	1.66	1.48
2	C	1294	B49	C38-N4	3.50	1.55	1.47
2	A	1294	B49	C21-N24	3.52	1.39	1.36
2	C	1294	B49	C40-N4	3.54	1.67	1.48
2	D	1294	B49	C16-N24	3.69	1.45	1.38
2	C	1294	B49	C7-C15	3.82	1.44	1.37
2	A	1294	B49	C12-C20	3.83	1.40	1.34
2	B	1294	B49	C12-C20	4.29	1.41	1.34
2	A	1294	B49	C18-C12	4.46	1.57	1.40
2	D	1294	B49	C18-C12	4.70	1.58	1.40
2	D	1294	B49	C7-C17	4.75	1.47	1.39
2	B	1294	B49	C7-C15	4.75	1.45	1.37
2	C	1294	B49	C17-C16	4.91	1.47	1.41
2	B	1294	B49	C18-C12	5.47	1.61	1.40

*Continued on next page...*

*Continued from previous page...*

Mol	Chain	Res	Type	Atoms	Z	Observed(Å)	Ideal(Å)
2	C	1294	B49	C18-C12	5.52	1.61	1.40
2	B	1294	B49	C16-N24	5.60	1.49	1.38
2	A	1294	B49	C5-C15	5.66	1.48	1.37
2	B	1294	B49	C21-N24	5.82	1.42	1.36
2	D	1294	B49	C5-C15	6.03	1.49	1.37
2	D	1294	B49	C12-C20	6.15	1.43	1.34
2	B	1294	B49	C5-C15	6.19	1.49	1.37
2	D	1294	B49	C21-N24	6.20	1.42	1.36
2	C	1294	B49	C21-N24	6.58	1.42	1.36
2	D	1294	B49	C6-C16	6.72	1.51	1.39
2	C	1294	B49	C5-C15	7.29	1.51	1.37
2	A	1294	B49	C6-C16	7.61	1.52	1.39
2	C	1294	B49	C6-C16	7.95	1.53	1.39
2	B	1294	B49	C6-C16	9.03	1.55	1.39

All (56) bond angle outliers are listed below:

Mol	Chain	Res	Type	Atoms	Z	Observed(°)	Ideal(°)
2	B	1294	B49	C16-N24-C21	-16.79	101.06	111.35
2	C	1294	B49	C16-N24-C21	-13.49	103.08	111.35
2	D	1294	B49	C16-N24-C21	-12.99	103.39	111.35
2	A	1294	B49	C16-N24-C21	-12.32	103.80	111.35
2	D	1294	B49	C6-C16-C17	-4.69	117.12	122.19
2	A	1294	B49	C38-C37-N25	-4.54	103.45	111.72
2	C	1294	B49	O27-C21-C20	-4.30	122.40	127.74
2	B	1294	B49	O27-C21-C20	-3.75	123.08	127.74
2	A	1294	B49	C6-C16-C17	-3.68	118.21	122.19
2	B	1294	B49	C6-C16-C17	-3.60	118.30	122.19
2	D	1294	B49	C7-C17-C20	-3.33	129.26	133.85
2	D	1294	B49	C5-C15-C7	-3.16	119.28	123.35
2	A	1294	B49	O27-C21-C20	-3.09	123.89	127.74
2	B	1294	B49	C19-C22-N25	-3.08	109.40	115.45
2	D	1294	B49	O27-C21-N24	-3.00	121.75	126.38
2	A	1294	B49	C7-C17-C20	-2.84	129.94	133.85
2	B	1294	B49	O27-C21-N24	-2.69	122.23	126.38
2	A	1294	B49	O27-C21-N24	-2.60	122.37	126.38
2	B	1294	B49	C5-C15-C7	-2.47	120.16	123.35
2	C	1294	B49	C7-C17-C20	-2.42	130.52	133.85
2	D	1294	B49	C17-C20-C12	-2.29	121.70	132.76
2	B	1294	B49	C7-C17-C20	-2.23	130.77	133.85
2	C	1294	B49	C6-C16-C17	-2.10	119.92	122.19
2	A	1294	B49	C17-C20-C12	-2.08	122.73	132.76

*Continued on next page...*

*Continued from previous page...*

Mol	Chain	Res	Type	Atoms	Z	Observed(°)	Ideal(°)
2	B	1294	B49	C37-C38-N4	2.00	117.56	112.90
2	C	1294	B49	C16-C17-C20	2.01	108.00	106.67
2	C	1294	B49	C7-C17-C16	2.05	121.39	119.43
2	A	1294	B49	C41-C40-N4	2.14	129.71	114.49
2	B	1294	B49	C41-C40-N4	2.25	130.47	114.49
2	D	1294	B49	C17-C16-N24	2.26	110.97	108.28
2	C	1294	B49	F29-C15-C7	2.27	121.24	118.22
2	B	1294	B49	C7-C17-C16	2.29	121.63	119.43
2	A	1294	B49	C16-C17-C20	2.32	108.20	106.67
2	D	1294	B49	O28-C22-C19	2.33	124.19	120.80
2	C	1294	B49	C41-C40-N4	2.36	131.24	114.49
2	A	1294	B49	C7-C17-C16	2.53	121.86	119.43
2	A	1294	B49	O28-C22-C19	2.73	124.77	120.80
2	C	1294	B49	C37-C38-N4	2.73	119.25	112.90
2	C	1294	B49	O28-C22-C19	3.19	125.44	120.80
2	B	1294	B49	C6-C5-C15	3.26	121.87	118.35
2	D	1294	B49	F29-C15-C7	3.28	122.59	118.22
2	B	1294	B49	F29-C15-C7	3.48	122.85	118.22
2	A	1294	B49	C37-C38-N4	3.61	121.31	112.90
2	C	1294	B49	C37-N25-C22	3.63	130.29	122.15
2	D	1294	B49	C7-C17-C16	3.80	123.07	119.43
2	D	1294	B49	C6-C5-C15	4.04	122.71	118.35
2	C	1294	B49	C3-C13-C19	4.70	134.29	125.09
2	C	1294	B49	C38-C37-N25	4.72	120.31	111.72
2	A	1294	B49	C3-C13-C19	5.09	135.04	125.09
2	D	1294	B49	C3-C13-C19	5.11	135.08	125.09
2	B	1294	B49	O28-C22-C19	5.90	129.37	120.80
2	B	1294	B49	C3-C13-C19	6.59	137.98	125.09
2	D	1294	B49	C20-C21-N24	10.51	112.73	106.98
2	A	1294	B49	C20-C21-N24	12.22	113.67	106.98
2	C	1294	B49	C20-C21-N24	13.01	114.11	106.98
2	B	1294	B49	C20-C21-N24	14.02	114.66	106.98

There are no chirality outliers.

There are no torsion outliers.

There are no ring outliers.

3 monomers are involved in 4 short contacts:

Mol	Chain	Res	Type	Clashes	Symm-Clashes
2	A	1294	B49	1	0
2	B	1294	B49	2	0

*Continued on next page...*

*Continued from previous page...*

Mol	Chain	Res	Type	Clashes	Symm-Clashes
2	C	1294	B49	1	0

## 5.7 Other polymers [i](#)

There are no such residues in this entry.

## 5.8 Polymer linkage issues [i](#)

There are no chain breaks in this entry.



## 6 Fit of model and data [i](#)

### 6.1 Protein, DNA and RNA chains [i](#)

In the following table, the column labelled ‘#RSRZ> 2’ contains the number (and percentage) of RSRZ outliers, followed by percent RSRZ outliers for the chain as percentile scores relative to all X-ray entries and entries of similar resolution. The OWAB column contains the minimum, median, 95<sup>th</sup> percentile and maximum values of the occupancy-weighted average B-factor per residue. The column labelled ‘Q< 0.9’ lists the number of (and percentage) of residues with an average occupancy less than 0.9.

Mol	Chain	Analysed	<RSRZ>	#RSRZ>2	OWAB(Å <sup>2</sup> )	Q<0.9
1	A	284/365 (77%)	-0.15	1 (0%) 93 93	24, 42, 73, 102	0
1	B	281/365 (76%)	-0.10	3 (1%) 82 84	33, 50, 85, 118	0
1	C	284/365 (77%)	-0.12	0 100 100	27, 47, 74, 99	0
1	D	281/365 (76%)	0.02	5 (1%) 71 75	28, 53, 97, 123	0
All	All	1130/1460 (77%)	-0.09	9 (0%) 87 89	24, 48, 85, 123	0

All (9) RSRZ outliers are listed below:

Mol	Chain	Res	Type	RSRZ
1	B	57	VAL	6.0
1	B	58	THR	5.1
1	A	208	PRO	2.6
1	D	180	PRO	2.3
1	D	67	LEU	2.3
1	B	59	ALA	2.2
1	D	64	PRO	2.1
1	D	239	ILE	2.1
1	D	282	ALA	2.0

### 6.2 Non-standard residues in protein, DNA, RNA chains [i](#)

There are no non-standard protein/DNA/RNA residues in this entry.

### 6.3 Carbohydrates [i](#)

There are no carbohydrates in this entry.

## 6.4 Ligands [i](#)

In the following table, the Atoms column lists the number of modelled atoms in the group and the number defined in the chemical component dictionary. LLDF column lists the quality of electron density of the group with respect to its neighbouring residues in protein, DNA or RNA chains. The B-factors column lists the minimum, median, 95<sup>th</sup> percentile and maximum values of B factors of atoms in the group. The column labelled 'Q< 0.9' lists the number of atoms with occupancy less than 0.9.

Mol	Type	Chain	Res	Atoms	RSCC	RSR	LLDF	B-factors( $\text{\AA}^2$ )	Q<0.9
2	B49	D	1294	29/29	0.92	0.17	1.28	36,42,76,77	0
2	B49	C	1294	29/29	0.94	0.17	1.07	32,41,71,73	0
2	B49	A	1294	29/29	0.96	0.17	0.88	23,32,67,68	0
2	B49	B	1294	29/29	0.96	0.14	0.51	27,34,57,59	0

## 6.5 Other polymers [i](#)

There are no such residues in this entry.