



# Full wwPDB X-ray Structure Validation Report ⓘ

Feb 19, 2016 – 08:28 PM GMT

PDB ID : 4YFI  
Title : TNNI3K complexed with inhibitor 1  
Authors : Shewchuk, L.M.; Wang, L.; Lawhorn, B.G.  
Deposited on : 2015-02-25  
Resolution : 2.70 Å(reported)

This is a Full wwPDB X-ray Structure Validation Report for a publicly released PDB entry.  
We welcome your comments at [validation@mail.wwpdb.org](mailto:validation@mail.wwpdb.org)  
A user guide is available at  
<http://wwpdb.org/validation/2016/XrayValidationReportHelp>  
with specific help available everywhere you see the ⓘ symbol.

---

The following versions of software and data (see [references ⓘ](#)) were used in the production of this report:

MolProbity : 4.02b-467  
Mogul : 1.7.1 (RC1), CSD as537be (2016)  
Xtriage (Phenix) : 1.9-1692  
EDS : rb-20026982  
Percentile statistics : 20151230.v01 (using entries in the PDB archive December 30th 2015)  
Refmac : 5.8.0135  
CCP4 : 6.5.0  
Ideal geometry (proteins) : Engh & Huber (2001)  
Ideal geometry (DNA, RNA) : Parkinson et al. (1996)  
Validation Pipeline (wwPDB-VP) : rb-20026982

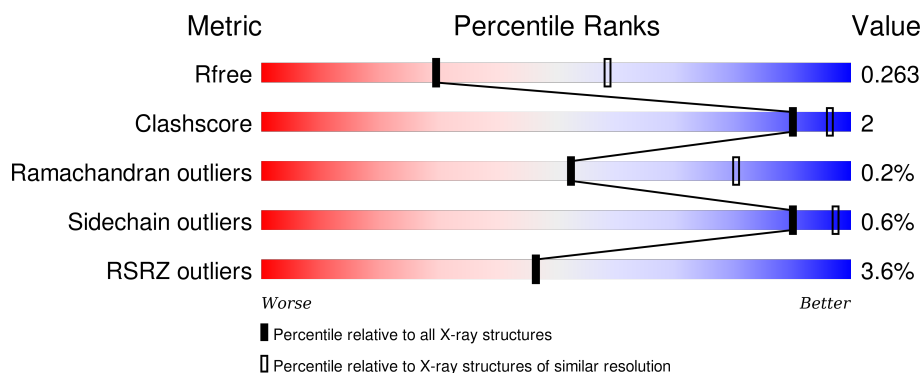
# 1 Overall quality at a glance

The following experimental techniques were used to determine the structure:

## *X-RAY DIFFRACTION*

The reported resolution of this entry is 2.70 Å.

Percentile scores (ranging between 0-100) for global validation metrics of the entry are shown in the following graphic. The table shows the number of entries on which the scores are based.



Metric	Whole archive (#Entries)	Similar resolution (#Entries, resolution range(Å))
$R_{free}$	91344	2103 (2.70-2.70)
Clashscore	102246	2422 (2.70-2.70)
Ramachandran outliers	100387	2382 (2.70-2.70)
Sidechain outliers	100360	2382 (2.70-2.70)
RSRZ outliers	91569	2107 (2.70-2.70)

The table below summarises the geometric issues observed across the polymeric chains and their fit to the electron density. The red, orange, yellow and green segments on the lower bar indicate the fraction of residues that contain outliers for  $\geq 3$ , 2, 1 and 0 types of geometric quality criteria. A grey segment represents the fraction of residues that are not modelled. The numeric value for each fraction is indicated below the corresponding segment, with a dot representing fractions  $\leq 5\%$ . The upper red bar (where present) indicates the fraction of residues that have poor fit to the electron density. The numeric value is given above the bar.

Mol	Chain	Length	Quality of chain
1	A	330	<div> <div>2%</div> <div>77%</div> <div>19%</div> </div>
1	B	330	<div> <div>3%</div> <div>77%</div> <div>21%</div> </div>
1	C	330	<div> <div>2%</div> <div>77%</div> <div>18%</div> </div>
1	D	330	<div> <div>4%</div> <div>73%</div> <div>6%</div> <div>21%</div> </div>

## 2 Entry composition

There are 3 unique types of molecules in this entry. The entry contains 8514 atoms, of which 0 are hydrogens and 0 are deuteriums.

In the tables below, the ZeroOcc column contains the number of atoms modelled with zero occupancy, the AltConf column contains the number of residues with at least one atom in alternate conformation and the Trace column contains the number of residues modelled with at most 2 atoms.

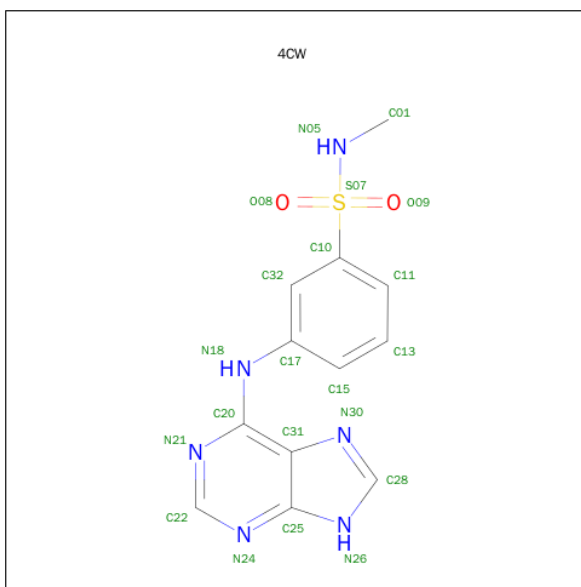
- Molecule 1 is a protein called Serine/threonine-protein kinase TNNT3K.

Mol	Chain	Residues	Atoms					ZeroOcc	AltConf	Trace
1	A	268	Total	C	N	O	S	0	2	0
			2102	1359	354	373	16			
1	B	262	Total	C	N	O	S	0	2	0
			2047	1318	347	364	18			
1	C	269	Total	C	N	O	S	0	2	0
			2119	1370	359	374	16			
1	D	261	Total	C	N	O	S	0	1	0
			2047	1319	348	364	16			

There are 12 discrepancies between the modelled and reference sequences:

Chain	Residue	Modelled	Actual	Comment	Reference
A	401	GLY	-	expression tag	UNP Q59H18
A	674	ASP	ALA	conflict	UNP Q59H18
A	675	MET	ALA	conflict	UNP Q59H18
B	401	GLY	-	expression tag	UNP Q59H18
B	674	ASP	ALA	conflict	UNP Q59H18
B	675	MET	ALA	conflict	UNP Q59H18
C	401	GLY	-	expression tag	UNP Q59H18
C	674	ASP	ALA	conflict	UNP Q59H18
C	675	MET	ALA	conflict	UNP Q59H18
D	401	GLY	-	expression tag	UNP Q59H18
D	674	ASP	ALA	conflict	UNP Q59H18
D	675	MET	ALA	conflict	UNP Q59H18

- Molecule 2 is N-methyl-3-(9H-purin-6-ylamino)benzenesulfonamide (three-letter code: 4CW) (formula: C<sub>12</sub>H<sub>12</sub>N<sub>6</sub>O<sub>2</sub>S).



Mol	Chain	Residues	Atoms					ZeroOcc	AltConf
2	A	1	Total	C	N	O	S	0	0
			21	12	6	2	1		
2	B	1	Total	C	N	O	S	0	0
			21	12	6	2	1		
2	C	1	Total	C	N	O	S	0	0
			21	12	6	2	1		
2	D	1	Total	C	N	O	S	0	0
			21	12	6	2	1		

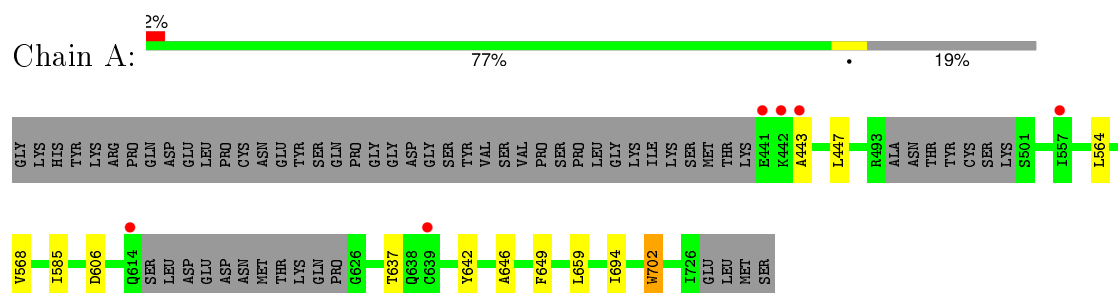
- Molecule 3 is water.

Mol	Chain	Residues	Atoms		ZeroOcc	AltConf
3	A	36	Total	O	0	0
			36	36		
3	B	23	Total	O	0	0
			23	23		
3	C	38	Total	O	0	0
			38	38		
3	D	18	Total	O	0	0
			18	18		

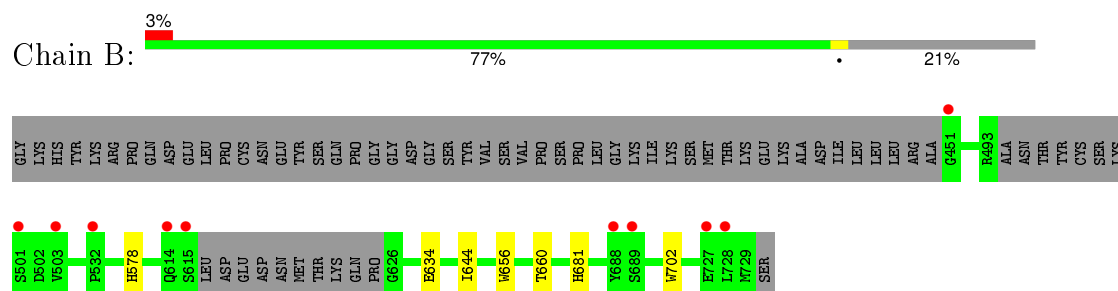
### 3 Residue-property plots [i](#)

These plots are drawn for all protein, RNA and DNA chains in the entry. The first graphic for a chain summarises the proportions of errors displayed in the second graphic. The second graphic shows the sequence view annotated by issues in geometry and electron density. Residues are color-coded according to the number of geometric quality criteria for which they contain at least one outlier: green = 0, yellow = 1, orange = 2 and red = 3 or more. A red dot above a residue indicates a poor fit to the electron density ( $RSRZ > 2$ ). Stretches of 2 or more consecutive residues without any outlier are shown as a green connector. Residues present in the sample, but not in the model, are shown in grey.

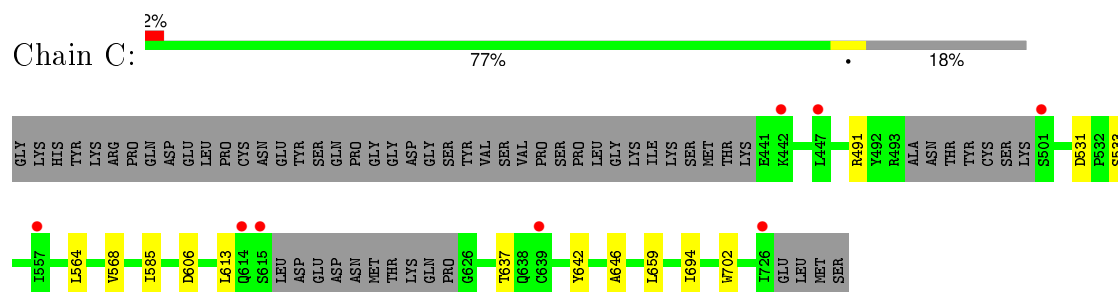
- Molecule 1: Serine/threonine-protein kinase TNNI3K



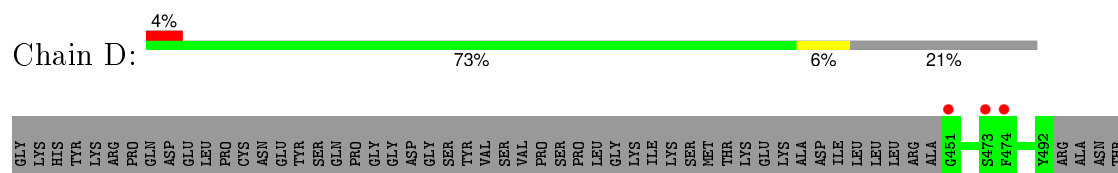
- Molecule 1: Serine/threonine-protein kinase TNNI3K

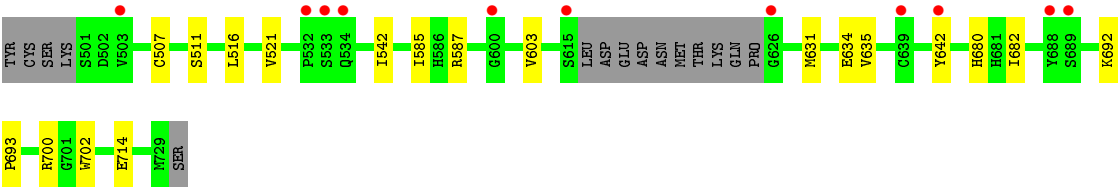


- Molecule 1: Serine/threonine-protein kinase TNNI3K



- Molecule 1: Serine/threonine-protein kinase TNNI3K





## 4 Data and refinement statistics

Property	Value	Source
Space group	P 1 21 1	Depositor
Cell constants a, b, c, $\alpha$ , $\beta$ , $\gamma$	80.07Å 115.68Å 92.02Å 90.00° 92.08° 90.00°	Depositor
Resolution (Å)	37.82 – 2.70 37.81 – 2.70	Depositor EDS
% Data completeness (in resolution range)	97.1 (37.82-2.70) 97.1 (37.81-2.70)	Depositor EDS
$R_{merge}$	0.07	Depositor
$R_{sym}$	(Not available)	Depositor
$\langle I/\sigma(I) \rangle$ <sup>1</sup>	4.93 (at 2.69Å)	Xtriage
Refinement program	REFMAC	Depositor
R, $R_{free}$	0.215 , 0.261 0.221 , 0.263	Depositor DCC
$R_{free}$ test set	2330 reflections (5.49%)	DCC
Wilson B-factor (Å <sup>2</sup> )	42.9	Xtriage
Anisotropy	0.060	Xtriage
Bulk solvent $k_{sol}$ (e/Å <sup>3</sup> ), $B_{sol}$ (Å <sup>2</sup> )	0.33 , 41.7	EDS
Estimated twinning fraction	0.000 for h,-k,-l	Xtriage
L-test for twinning <sup>2</sup>	$\langle  L  \rangle = 0.55$ , $\langle L^2 \rangle = 0.40$	Xtriage
Outliers	1 of 44769 reflections (0.002%)	Xtriage
$F_o, F_c$ correlation	0.95	EDS
Total number of atoms	8514	wwPDB-VP
Average B, all atoms (Å <sup>2</sup> )	49.0	wwPDB-VP

Xtriage's analysis on translational NCS is as follows: *The analyses of the Patterson function reveals a significant off-origin peak that is 50.92 % of the origin peak, indicating pseudo translational symmetry. The chance of finding a peak of this or larger height randomly in a structure without pseudo translational symmetry is equal to 6.0412e-05. The detected translational NCS is most likely also responsible for the elevated intensity ratio.*

<sup>1</sup>Intensities estimated from amplitudes.

<sup>2</sup>Theoretical values of  $\langle |L| \rangle$ ,  $\langle L^2 \rangle$  for acentric reflections are 0.5, 0.375 respectively for untwinned datasets, and 0.333, 0.2 for perfectly twinned datasets.

## 5 Model quality [i](#)

### 5.1 Standard geometry [i](#)

Bond lengths and bond angles in the following residue types are not validated in this section: 4CW

The Z score for a bond length (or angle) is the number of standard deviations the observed value is removed from the expected value. A bond length (or angle) with  $|Z| > 5$  is considered an outlier worth inspection. RMSZ is the root-mean-square of all Z scores of the bond lengths (or angles).

Mol	Chain	Bond lengths		Bond angles	
		RMSZ	$\# Z  > 5$	RMSZ	$\# Z  > 5$
1	A	0.46	0/2158	0.63	0/2926
1	B	0.43	0/2101	0.62	0/2847
1	C	0.45	0/2175	0.63	0/2947
1	D	0.46	0/2098	0.61	0/2842
All	All	0.45	0/8532	0.62	0/11562

There are no bond length outliers.

There are no bond angle outliers.

There are no chirality outliers.

There are no planarity outliers.

### 5.2 Too-close contacts [i](#)

In the following table, the Non-H and H(model) columns list the number of non-hydrogen atoms and hydrogen atoms in the chain respectively. The H(added) column lists the number of hydrogen atoms added and optimized by MolProbity. The Clashes column lists the number of clashes within the asymmetric unit, whereas Symm-Clashes lists symmetry related clashes.

Mol	Chain	Non-H	H(model)	H(added)	Clashes	Symm-Clashes
1	A	2102	0	2073	10	0
1	B	2047	0	2014	6	0
1	C	2119	0	2104	12	0
1	D	2047	0	2022	12	0
2	A	21	0	12	1	0
2	B	21	0	12	1	0
2	C	21	0	12	1	0
2	D	21	0	12	1	0
3	A	36	0	0	0	0

*Continued on next page...*



*Continued from previous page...*

Mol	Chain	Non-H	H(model)	H(added)	Clashes	Symm-Clashes
3	B	23	0	0	0	0
3	C	38	0	0	1	0
3	D	18	0	0	0	0
All	All	8514	0	8261	39	0

The all-atom clashscore is defined as the number of clashes found per 1000 atoms (including hydrogen atoms). The all-atom clashscore for this structure is 2.

All (39) close contacts within the same asymmetric unit are listed below, sorted by their clash magnitude.

Atom-1	Atom-2	Interatomic distance (Å)	Clash overlap (Å)
1:A:659:LEU:HD11	1:A:694:ILE:HG21	1.64	0.79
1:C:585:ILE:HD11	1:C:613:LEU:HD13	1.66	0.76
1:A:642:TYR:CE1	1:A:646:ALA:HB3	2.31	0.65
1:D:631:MET:HE2	1:D:635:VAL:HG12	1.79	0.63
2:C:801:4CW:H5	2:C:801:4CW:N21	2.14	0.63
1:C:659:LEU:HD11	1:C:694:ILE:HG21	1.81	0.62
1:A:637:THR:HG21	1:B:634:GLU:HA	1.83	0.60
1:C:637:THR:HG21	1:D:634:GLU:HA	1.84	0.59
2:A:801:4CW:N21	2:A:801:4CW:H5	2.16	0.59
1:A:637:THR:CG2	1:B:634:GLU:HA	2.34	0.58
2:D:801:4CW:H5	2:D:801:4CW:N21	2.19	0.57
1:C:642:TYR:CE1	1:C:646:ALA:HB3	2.40	0.56
1:C:585:ILE:HG21	1:C:642:TYR:CE1	2.42	0.54
1:D:516:LEU:HD13	1:D:521:VAL:CG1	2.37	0.54
1:C:491:ARG:NH2	1:C:533:SER:O	2.41	0.53
1:C:637:THR:CG2	1:D:634:GLU:HA	2.39	0.52
1:C:585:ILE:HD11	1:C:613:LEU:CD1	2.39	0.51
1:D:507:CYS:O	1:D:511:SER:OG	2.28	0.49
1:A:659:LEU:CD1	1:A:694:ILE:HG21	2.37	0.49
1:D:585:ILE:HG21	1:D:642:TYR:CE1	2.46	0.49
1:D:680:HIS:HB2	1:D:682:ILE:HD12	1.93	0.49
1:D:587:ARG:HD2	1:D:642:TYR:CE2	2.48	0.49
1:D:542:ILE:CD1	1:D:603:VAL:HG21	2.43	0.49
1:A:585:ILE:HG21	1:A:642:TYR:CE1	2.48	0.48
1:A:649:PHE:CD2	1:A:702:TRP:HA	2.49	0.48
1:C:585:ILE:HG21	1:C:642:TYR:CD1	2.49	0.47
1:C:564:LEU:O	1:C:568:VAL:HG23	2.14	0.46
1:B:656:TRP:CE2	1:B:660:THR:HG21	2.50	0.45
2:B:801:4CW:N21	2:B:801:4CW:H5	2.32	0.43
1:D:700:ARG:HH22	1:D:714:GLU:CD	2.23	0.42

*Continued on next page...*

Continued from previous page...

Atom-1	Atom-2	Interatomic distance (Å)	Clash overlap (Å)
1:B:578:HIS:CE1	1:B:644:ILE:HB	2.55	0.41
1:A:564:LEU:O	1:A:568:VAL:HG23	2.20	0.41
1:C:585:ILE:CG2	1:C:642:TYR:CE1	3.03	0.41
1:D:692:LYS:N	1:D:693:PRO:CD	2.83	0.41
1:C:642:TYR:CZ	1:C:646:ALA:HB3	2.55	0.40
1:A:637:THR:HG23	1:B:634:GLU:HB2	2.03	0.40
1:B:681:HIS:HB2	3:C:936:HOH:O	2.22	0.40
1:D:631:MET:CE	1:D:635:VAL:HG12	2.49	0.40
1:A:443:ALA:O	1:A:447[B]:LEU:HG	2.22	0.40

There are no symmetry-related clashes.

## 5.3 Torsion angles

### 5.3.1 Protein backbone

In the following table, the Percentiles column shows the percent Ramachandran outliers of the chain as a percentile score with respect to all X-ray entries followed by that with respect to entries of similar resolution.

The Analysed column shows the number of residues for which the backbone conformation was analysed, and the total number of residues.

Mol	Chain	Analysed	Favoured	Allowed	Outliers	Percentiles	
1	A	264/330 (80%)	258 (98%)	5 (2%)	1 (0%)	39	69
1	B	258/330 (78%)	253 (98%)	5 (2%)	0	100	100
1	C	265/330 (80%)	259 (98%)	5 (2%)	1 (0%)	39	69
1	D	256/330 (78%)	246 (96%)	10 (4%)	0	100	100
All	All	1043/1320 (79%)	1016 (97%)	25 (2%)	2 (0%)	52	80

All (2) Ramachandran outliers are listed below:

Mol	Chain	Res	Type
1	A	606	ASP
1	C	606	ASP

### 5.3.2 Protein sidechains [i](#)

In the following table, the Percentiles column shows the percent sidechain outliers of the chain as a percentile score with respect to all X-ray entries followed by that with respect to entries of similar resolution.

The Analysed column shows the number of residues for which the sidechain conformation was analysed, and the total number of residues.

Mol	Chain	Analysed	Rotameric	Outliers	Percentiles	
1	A	225/290 (78%)	224 (100%)	1 (0%)	93	98
1	B	221/290 (76%)	220 (100%)	1 (0%)	92	98
1	C	228/290 (79%)	226 (99%)	2 (1%)	84	95
1	D	221/290 (76%)	220 (100%)	1 (0%)	92	98
All	All	895/1160 (77%)	890 (99%)	5 (1%)	90	97

All (5) residues with a non-rotameric sidechain are listed below:

Mol	Chain	Res	Type
1	A	702	TRP
1	B	702	TRP
1	C	531	ASP
1	C	702	TRP
1	D	702	TRP

Some sidechains can be flipped to improve hydrogen bonding and reduce clashes. There are no such sidechains identified.

### 5.3.3 RNA [i](#)

There are no RNA molecules in this entry.

## 5.4 Non-standard residues in protein, DNA, RNA chains [i](#)

There are no non-standard protein/DNA/RNA residues in this entry.

## 5.5 Carbohydrates [i](#)

There are no carbohydrates in this entry.

## 5.6 Ligand geometry

4 ligands are modelled in this entry.

In the following table, the Counts columns list the number of bonds (or angles) for which Mogul statistics could be retrieved, the number of bonds (or angles) that are observed in the model and the number of bonds (or angles) that are defined in the chemical component dictionary. The Link column lists molecule types, if any, to which the group is linked. The Z score for a bond length (or angle) is the number of standard deviations the observed value is removed from the expected value. A bond length (or angle) with  $|Z| > 2$  is considered an outlier worth inspection. RMSZ is the root-mean-square of all Z scores of the bond lengths (or angles).

Mol	Type	Chain	Res	Link	Bond lengths			Bond angles		
					Counts	RMSZ	# $ Z  > 2$	Counts	RMSZ	# $ Z  > 2$
2	4CW	A	801	-	19,23,23	2.45	6 (31%)	20,33,33	3.44	8 (40%)
2	4CW	B	801	-	19,23,23	2.52	4 (21%)	20,33,33	4.13	10 (50%)
2	4CW	C	801	-	19,23,23	2.18	6 (31%)	20,33,33	3.90	11 (55%)
2	4CW	D	801	-	19,23,23	2.30	3 (15%)	20,33,33	3.69	8 (40%)

In the following table, the Chirals column lists the number of chiral outliers, the number of chiral centers analysed, the number of these observed in the model and the number defined in the chemical component dictionary. Similar counts are reported in the Torsion and Rings columns. '-' means no outliers of that kind were identified.

Mol	Type	Chain	Res	Link	Chirals	Torsions	Rings
2	4CW	A	801	-	-	0/13/13/13	0/3/3/3
2	4CW	B	801	-	-	0/13/13/13	0/3/3/3
2	4CW	C	801	-	-	0/13/13/13	0/3/3/3
2	4CW	D	801	-	-	0/13/13/13	0/3/3/3

All (19) bond length outliers are listed below:

Mol	Chain	Res	Type	Atoms	Z	Observed(Å)	Ideal(Å)
2	C	801	4CW	C10-S07	2.16	1.79	1.76
2	B	801	4CW	C01-N05	2.23	1.48	1.46
2	A	801	4CW	O08-S07	2.40	1.46	1.43
2	C	801	4CW	C20-N18	2.44	1.40	1.36
2	A	801	4CW	C22-N24	2.68	1.36	1.32
2	A	801	4CW	C20-N18	2.77	1.41	1.36
2	A	801	4CW	C10-S07	3.05	1.80	1.76
2	C	801	4CW	C22-N24	3.23	1.37	1.32
2	C	801	4CW	O08-S07	3.53	1.47	1.43
2	D	801	4CW	C20-N18	4.23	1.43	1.36
2	B	801	4CW	C20-N18	4.39	1.44	1.36

*Continued on next page...*

*Continued from previous page...*

Mol	Chain	Res	Type	Atoms	Z	Observed(Å)	Ideal(Å)
2	C	801	4CW	C25-N26	4.44	1.41	1.35
2	C	801	4CW	O09-S07	4.51	1.48	1.43
2	D	801	4CW	C25-N26	5.12	1.42	1.35
2	B	801	4CW	C25-N26	5.56	1.43	1.35
2	D	801	4CW	C10-S07	5.76	1.84	1.76
2	A	801	4CW	O09-S07	5.76	1.49	1.43
2	A	801	4CW	C25-N26	6.08	1.43	1.35
2	B	801	4CW	C10-S07	6.59	1.86	1.76

All (37) bond angle outliers are listed below:

Mol	Chain	Res	Type	Atoms	Z	Observed(°)	Ideal(°)
2	C	801	4CW	N24-C22-N21	-12.05	119.41	128.87
2	D	801	4CW	N24-C22-N21	-11.70	119.68	128.87
2	B	801	4CW	N24-C22-N21	-11.17	120.10	128.87
2	A	801	4CW	N24-C22-N21	-10.88	120.33	128.87
2	C	801	4CW	O09-S07-O08	-4.56	113.49	119.54
2	B	801	4CW	O09-S07-O08	-4.29	113.85	119.54
2	A	801	4CW	O09-S07-O08	-3.50	114.90	119.54
2	D	801	4CW	C31-C25-N26	-3.30	105.26	111.12
2	C	801	4CW	C31-C25-N26	-3.08	105.66	111.12
2	C	801	4CW	O08-S07-N05	-2.96	103.68	107.13
2	B	801	4CW	C31-C25-N26	-2.94	105.92	111.12
2	A	801	4CW	C11-C10-S07	-2.78	116.61	119.79
2	B	801	4CW	C10-S07-N05	-2.78	103.91	107.49
2	D	801	4CW	O09-S07-O08	-2.64	116.04	119.54
2	A	801	4CW	C31-C25-N26	-2.55	106.60	111.12
2	D	801	4CW	O08-S07-C10	-2.53	104.72	107.94
2	B	801	4CW	O08-S07-C10	-2.47	104.79	107.94
2	C	801	4CW	C11-C10-S07	-2.40	117.05	119.79
2	C	801	4CW	C17-N18-C20	-2.01	123.97	128.41
2	D	801	4CW	C11-C10-S07	2.09	122.18	119.79
2	B	801	4CW	C11-C10-S07	2.59	122.75	119.79
2	C	801	4CW	O08-S07-C10	2.59	111.24	107.94
2	D	801	4CW	O09-S07-C10	2.86	111.58	107.94
2	A	801	4CW	C11-C10-C32	2.88	124.18	120.57
2	C	801	4CW	C11-C10-C32	3.14	124.51	120.57
2	A	801	4CW	N18-C20-N21	3.33	121.74	118.82
2	C	801	4CW	O09-S07-N05	4.00	111.79	107.13
2	B	801	4CW	O08-S07-N05	4.11	111.92	107.13
2	C	801	4CW	N18-C20-N21	4.17	122.48	118.82
2	A	801	4CW	C22-N21-C20	4.45	119.67	116.47

*Continued on next page...*

*Continued from previous page...*

Mol	Chain	Res	Type	Atoms	Z	Observed(°)	Ideal(°)
2	B	801	4CW	N18-C20-N21	5.31	123.47	118.82
2	D	801	4CW	N18-C20-N21	5.45	123.60	118.82
2	A	801	4CW	O09-S07-N05	5.71	113.78	107.13
2	C	801	4CW	C22-N21-C20	6.79	121.35	116.47
2	B	801	4CW	O09-S07-C10	6.84	116.66	107.94
2	D	801	4CW	C22-N21-C20	7.62	121.95	116.47
2	B	801	4CW	C22-N21-C20	8.11	122.30	116.47

There are no chirality outliers.

There are no torsion outliers.

There are no ring outliers.

4 monomers are involved in 4 short contacts:

Mol	Chain	Res	Type	Clashes	Symm-Clashes
2	A	801	4CW	1	0
2	B	801	4CW	1	0
2	C	801	4CW	1	0
2	D	801	4CW	1	0

## 5.7 Other polymers [i](#)

There are no such residues in this entry.

## 5.8 Polymer linkage issues [i](#)

There are no chain breaks in this entry.

## 6 Fit of model and data ⓘ

### 6.1 Protein, DNA and RNA chains ⓘ

In the following table, the column labelled ‘#RSRZ> 2’ contains the number (and percentage) of RSRZ outliers, followed by percent RSRZ outliers for the chain as percentile scores relative to all X-ray entries and entries of similar resolution. The OWAB column contains the minimum, median, 95<sup>th</sup> percentile and maximum values of the occupancy-weighted average B-factor per residue. The column labelled ‘Q< 0.9’ lists the number of (and percentage) of residues with an average occupancy less than 0.9.

Mol	Chain	Analysed	<RSRZ>	#RSRZ>2	OWAB(Å <sup>2</sup> )	Q<0.9
1	A	268/330 (81%)	-0.25	6 (2%) 65 66	24, 43, 75, 91	0
1	B	262/330 (79%)	-0.07	10 (3%) 44 44	29, 49, 88, 110	0
1	C	269/330 (81%)	-0.20	8 (2%) 54 54	24, 41, 73, 104	0
1	D	261/330 (79%)	-0.04	14 (5%) 29 28	27, 51, 91, 116	0
All	All	1060/1320 (80%)	-0.14	38 (3%) 46 46	24, 46, 83, 116	0

All (38) RSRZ outliers are listed below:

Mol	Chain	Res	Type	RSRZ
1	B	532	PRO	4.5
1	C	615	SER	4.4
1	C	501	SER	4.3
1	D	451	GLY	4.2
1	C	639	CYS	4.1
1	B	501	SER	4.1
1	B	615	SER	4.1
1	B	689	SER	4.0
1	B	688	TYR	3.7
1	A	441	GLU	3.7
1	D	503	VAL	3.5
1	D	615	SER	3.2
1	B	728	LEU	3.2
1	B	727	GLU	3.1
1	A	557	ILE	3.0
1	C	726	ILE	3.0
1	C	442	LYS	2.8
1	A	614	GLN	2.7
1	B	451	GLY	2.6
1	D	532	PRO	2.6
1	A	639	CYS	2.5

*Continued on next page...*

*Continued from previous page...*

Mol	Chain	Res	Type	RSRZ
1	B	614	GLN	2.5
1	D	473	SER	2.4
1	D	533	SER	2.4
1	C	614	GLN	2.4
1	D	534	GLN	2.4
1	D	642	TYR	2.4
1	A	443	ALA	2.3
1	A	442	LYS	2.3
1	B	503	VAL	2.2
1	D	626	GLY	2.2
1	D	600	GLY	2.2
1	D	688	TYR	2.1
1	D	474	PHE	2.1
1	D	689	SER	2.1
1	C	447[A]	LEU	2.1
1	C	557	ILE	2.1
1	D	639	CYS	2.1

## 6.2 Non-standard residues in protein, DNA, RNA chains [i](#)

There are no non-standard protein/DNA/RNA residues in this entry.

## 6.3 Carbohydrates [i](#)

There are no carbohydrates in this entry.

## 6.4 Ligands [i](#)

In the following table, the Atoms column lists the number of modelled atoms in the group and the number defined in the chemical component dictionary. LLDF column lists the quality of electron density of the group with respect to its neighbouring residues in protein, DNA or RNA chains. The B-factors column lists the minimum, median, 95<sup>th</sup> percentile and maximum values of B factors of atoms in the group. The column labelled 'Q< 0.9' lists the number of atoms with occupancy less than 0.9.

Mol	Type	Chain	Res	Atoms	RSCC	RSR	LLDF	B-factors(Å <sup>2</sup> )	Q<0.9
2	4CW	B	801	21/21	0.92	0.20	1.89	52,63,71,74	0
2	4CW	D	801	21/21	0.95	0.16	-0.06	44,51,59,62	0
2	4CW	C	801	21/21	0.98	0.09	-1.57	7,11,14,14	0
2	4CW	A	801	21/21	0.98	0.10	-1.70	8,11,13,13	0



## 6.5 Other polymers [i](#)

There are no such residues in this entry.