



# Full wwPDB X-ray Structure Validation Report ⓘ

Feb 1, 2016 – 10:36 PM GMT

PDB ID : 4YFY  
Title : X-ray structure of the Viof N-formyltransferase from *Providencia alcalifaciens* O30 in complex with THF and TDP-Qui4N  
Authors : Genthe, N.A.; Thoden, J.B.; Benning, M.M.; Holden, H.M.  
Deposited on : 2015-02-25  
Resolution : 1.90 Å(reported)

This is a Full wwPDB X-ray Structure Validation Report for a publicly released PDB entry.  
We welcome your comments at [validation@mail.wwpdb.org](mailto:validation@mail.wwpdb.org)  
A user guide is available at  
<http://wwpdb.org/validation/2016/XrayValidationReportHelp>  
with specific help available everywhere you see the ⓘ symbol.

---

The following versions of software and data (see [references ⓘ](#)) were used in the production of this report:

MolProbity : 4.02b-467  
Mogul : 1.7 (RC4), CSD as536be (2015)  
Xtriage (Phenix) : 1.9-1692  
EDS : rb-20026688  
Percentile statistics : 20151230.v01 (using entries in the PDB archive December 30th 2015)  
Refmac : 5.8.0135  
CCP4 : 6.5.0  
Ideal geometry (proteins) : Engh & Huber (2001)  
Ideal geometry (DNA, RNA) : Parkinson et al. (1996)  
Validation Pipeline (wwPDB-VP) : trunk26865

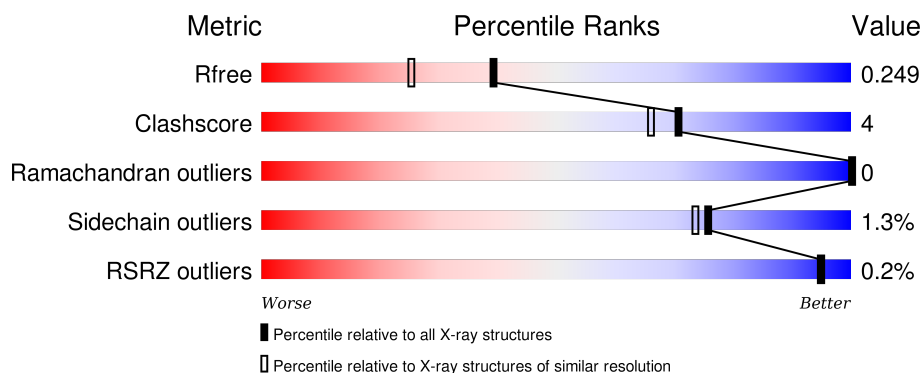
# 1 Overall quality at a glance

The following experimental techniques were used to determine the structure:

## *X-RAY DIFFRACTION*

The reported resolution of this entry is 1.90 Å.

Percentile scores (ranging between 0-100) for global validation metrics of the entry are shown in the following graphic. The table shows the number of entries on which the scores are based.



Metric	Whole archive (#Entries)	Similar resolution (#Entries, resolution range(Å))
$R_{free}$	91344	4755 (1.90-1.90)
Clashscore	102246	5398 (1.90-1.90)
Ramachandran outliers	100387	5338 (1.90-1.90)
Sidechain outliers	100360	5339 (1.90-1.90)
RSRZ outliers	91569	4766 (1.90-1.90)

The table below summarises the geometric issues observed across the polymeric chains and their fit to the electron density. The red, orange, yellow and green segments on the lower bar indicate the fraction of residues that contain outliers for  $\geq 3$ , 2, 1 and 0 types of geometric quality criteria. A grey segment represents the fraction of residues that are not modelled. The numeric value for each fraction is indicated below the corresponding segment, with a dot representing fractions  $\leq 5\%$ . The upper red bar (where present) indicates the fraction of residues that have poor fit to the electron density. The numeric value is given above the bar.

Mol	Chain	Length	Quality of chain
1	A	254	 83% 11% 5%
1	B	254	 84% 10% 5%

The following table lists non-polymeric compounds, carbohydrate monomers and non-standard residues in protein, DNA, RNA chains that are outliers for geometric or electron-density-fit criteria:

Mol	Type	Chain	Res	Chirality	Geometry	Clashes	Electron density
2	0FX	A	301	-	-	-	X
3	1YJ	A	302	-	-	-	X
3	1YJ	B	302	-	-	-	X

## 2 Entry composition

There are 6 unique types of molecules in this entry. The entry contains 4546 atoms, of which 0 are hydrogens and 0 are deuteriums.

In the tables below, the ZeroOcc column contains the number of atoms modelled with zero occupancy, the AltConf column contains the number of residues with at least one atom in alternate conformation and the Trace column contains the number of residues modelled with at most 2 atoms.

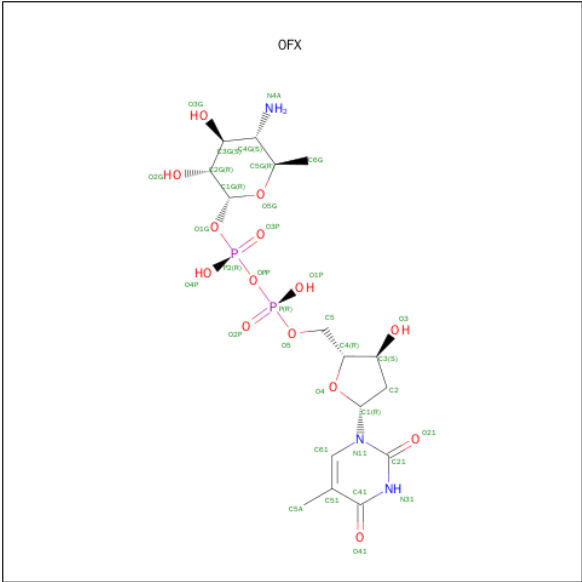
- Molecule 1 is a protein called VioF.

Mol	Chain	Residues	Atoms					ZeroOcc	AltConf	Trace
1	A	241	Total	C	N	O	S	0	0	0
			1978	1266	331	374	7			
1	B	241	Total	C	N	O	S	0	1	0
			1981	1268	331	375	7			

There are 20 discrepancies between the modelled and reference sequences:

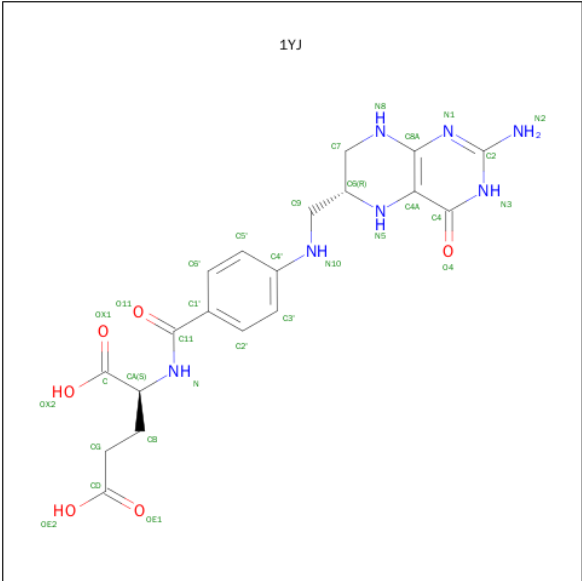
Chain	Residue	Modelled	Actual	Comment	Reference
A	245	LEU	-	expression tag	UNP M9P0Q2
A	246	GLU	-	expression tag	UNP M9P0Q2
A	247	SER	-	expression tag	UNP M9P0Q2
A	248	ALA	-	expression tag	UNP M9P0Q2
A	249	HIS	-	expression tag	UNP M9P0Q2
A	250	HIS	-	expression tag	UNP M9P0Q2
A	251	HIS	-	expression tag	UNP M9P0Q2
A	252	HIS	-	expression tag	UNP M9P0Q2
A	253	HIS	-	expression tag	UNP M9P0Q2
A	254	HIS	-	expression tag	UNP M9P0Q2
B	245	LEU	-	expression tag	UNP M9P0Q2
B	246	GLU	-	expression tag	UNP M9P0Q2
B	247	SER	-	expression tag	UNP M9P0Q2
B	248	ALA	-	expression tag	UNP M9P0Q2
B	249	HIS	-	expression tag	UNP M9P0Q2
B	250	HIS	-	expression tag	UNP M9P0Q2
B	251	HIS	-	expression tag	UNP M9P0Q2
B	252	HIS	-	expression tag	UNP M9P0Q2
B	253	HIS	-	expression tag	UNP M9P0Q2
B	254	HIS	-	expression tag	UNP M9P0Q2

- Molecule 2 is dTDP-4-amino-4,6-dideoxyglucose (three-letter code: 0FX) (formula:  $C_{16}H_{27}N_3O_{14}P_2$ ).



Mol	Chain	Residues	Atoms					ZeroOcc	AltConf
2	A	1	Total 35	C 16	N 3	O 14	P 2	0	0
2	B	1	Total 35	C 16	N 3	O 14	P 2	0	0

- Molecule 3 is N-[4-({[(6R)-2-amino-4-oxo-3,4,5,6,7,8-hexahydropteridin-6-yl]methyl}amino) benzoyl]-L-glutamic acid (three-letter code: 1YJ) (formula: C<sub>19</sub>H<sub>23</sub>N<sub>7</sub>O<sub>6</sub>).



Mol	Chain	Residues	Atoms				ZeroOcc	AltConf
3	A	1	Total	C	N	O	0	0
			32	19	7	6		

Continued on next page...

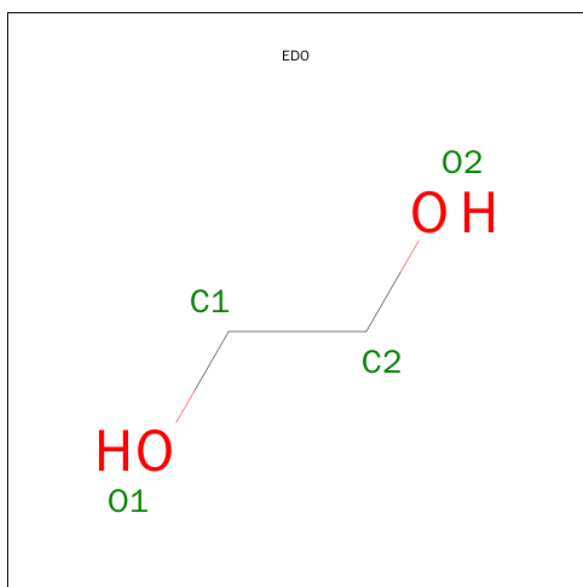
*Continued from previous page...*

Mol	Chain	Residues	Atoms				ZeroOcc	AltConf
3	B	1	Total	C	N	O	0	0
			32	19	7	6		

- Molecule 4 is CHLORIDE ION (three-letter code: CL) (formula: Cl).

Mol	Chain	Residues	Atoms		ZeroOcc	AltConf
4	A	1	Total	Cl	0	0
			1	1		

- Molecule 5 is 1,2-ETHANEDIOL (three-letter code: EDO) (formula: C<sub>2</sub>H<sub>6</sub>O<sub>2</sub>).



Mol	Chain	Residues	Atoms			ZeroOcc	AltConf
5	A	1	Total	C	O	0	0
			4	2	2		

- Molecule 6 is water.

Mol	Chain	Residues	Atoms		ZeroOcc	AltConf
6	A	246	Total	O	0	0
			246	246		
6	B	202	Total	O	0	0
			202	202		



- Molecule 1: VioF



## 4 Data and refinement statistics

Property	Value	Source
Space group	H 3 2	Depositor
Cell constants a, b, c, $\alpha$ , $\beta$ , $\gamma$	132.00Å 132.00Å 161.40Å 90.00° 90.00° 120.00°	Depositor
Resolution (Å)	50.00 – 1.90 66.00 – 1.90	Depositor EDS
% Data completeness (in resolution range)	99.7 (50.00-1.90) 99.8 (66.00-1.90)	Depositor EDS
$R_{merge}$	0.05	Depositor
$R_{sym}$	0.05	Depositor
$\langle I/\sigma(I) \rangle$ <sup>1</sup>	1.82 (at 1.90Å)	Xtriage
Refinement program	REFMAC 5.7.0029	Depositor
R, $R_{free}$	0.187 , 0.244 0.196 , 0.249	Depositor DCC
$R_{free}$ test set	2161 reflections (5.33%)	DCC
Wilson B-factor (Å <sup>2</sup> )	17.2	Xtriage
Anisotropy	0.411	Xtriage
Bulk solvent $k_{sol}$ (e/Å <sup>3</sup> ), $B_{sol}$ (Å <sup>2</sup> )	0.34 , 46.3	EDS
Estimated twinning fraction	0.019 for -2/3*h-1/3*k+2/3*l,-1/3*h-2/3*k-2/3*l,2/3*h-2/3*k+1/3*l 0.014 for -h,1/3*h-1/3*k+2/3*l,2/3*h+4/3*k+1/3*l 0.006 for -1/3*h+1/3*k-2/3*l,-k,-4/3*h-2/3*k+1/3*l	Xtriage
L-test for twinning <sup>2</sup>	$\langle  L  \rangle = 0.50$ , $\langle L^2 \rangle = 0.34$	Xtriage
Outliers	0 of 42766 reflections	Xtriage
$F_o, F_c$ correlation	0.95	EDS
Total number of atoms	4546	wwPDB-VP
Average B, all atoms (Å <sup>2</sup> )	22.0	wwPDB-VP

Xtriage's analysis on translational NCS is as follows: *The largest off-origin peak in the Patterson function is 3.31% of the height of the origin peak. No significant pseudotranslation is detected.*

<sup>1</sup> Intensities estimated from amplitudes.

<sup>2</sup> Theoretical values of  $\langle |L| \rangle$ ,  $\langle L^2 \rangle$  for acentric reflections are 0.5, 0.375 respectively for untwinned datasets, and 0.333, 0.2 for perfectly twinned datasets.



## 5 Model quality

### 5.1 Standard geometry

Bond lengths and bond angles in the following residue types are not validated in this section: 0FX, CL, EDO, 1YJ

The Z score for a bond length (or angle) is the number of standard deviations the observed value is removed from the expected value. A bond length (or angle) with  $|Z| > 5$  is considered an outlier worth inspection. RMSZ is the root-mean-square of all Z scores of the bond lengths (or angles).

Mol	Chain	Bond lengths		Bond angles	
		RMSZ	$\# Z  > 5$	RMSZ	$\# Z  > 5$
1	A	0.63	0/2018	1.05	6/2728 (0.2%)
1	B	0.58	0/2024	0.99	3/2736 (0.1%)
All	All	0.60	0/4042	1.02	9/5464 (0.2%)

There are no bond length outliers.

All (9) bond angle outliers are listed below:

Mol	Chain	Res	Type	Atoms	Z	Observed(°)	Ideal(°)
1	A	213	ARG	NE-CZ-NH1	9.93	125.27	120.30
1	B	102	ARG	NE-CZ-NH2	7.84	124.22	120.30
1	A	227	ASP	CB-CG-OD1	7.06	124.66	118.30
1	A	102	ARG	NE-CZ-NH2	-6.88	116.86	120.30
1	A	201	ASP	CB-CG-OD2	6.51	124.16	118.30
1	A	213	ARG	NE-CZ-NH2	-5.68	117.46	120.30
1	B	129	ASP	CB-CG-OD1	5.60	123.34	118.30
1	A	227	ASP	CB-CG-OD2	-5.35	113.49	118.30
1	B	102	ARG	NE-CZ-NH1	-5.33	117.63	120.30

There are no chirality outliers.

There are no planarity outliers.

### 5.2 Too-close contacts

In the following table, the Non-H and H(model) columns list the number of non-hydrogen atoms and hydrogen atoms in the chain respectively. The H(added) column lists the number of hydrogen atoms added and optimized by MolProbity. The Clashes column lists the number of clashes within the asymmetric unit, whereas Symm-Clashes lists symmetry related clashes.

Mol	Chain	Non-H	H(model)	H(added)	Clashes	Symm-Clashes
1	A	1978	0	1982	16	0
1	B	1981	0	1987	22	0
2	A	35	0	26	2	0
2	B	35	0	25	0	0
3	A	32	0	21	0	0
3	B	32	0	21	0	0
4	A	1	0	0	0	0
5	A	4	0	6	0	0
6	A	246	0	0	4	1
6	B	202	0	0	8	1
All	All	4546	0	4068	36	1

The all-atom clashscore is defined as the number of clashes found per 1000 atoms (including hydrogen atoms). The all-atom clashscore for this structure is 4.

All (36) close contacts within the same asymmetric unit are listed below, sorted by their clash magnitude.

Atom-1	Atom-2	Interatomic distance (Å)	Clash overlap (Å)
1:B:102:ARG:HD2	1:B:129:ASP:O	1.89	0.71
1:A:8:SER:HB3	1:A:14:VAL:CG1	2.23	0.68
1:B:156:GLU:OE2	6:B:401:HOH:O	2.13	0.67
1:A:112:LEU:HD21	1:A:211:LEU:HA	1.75	0.66
1:B:239:LEU:O	6:B:402:HOH:O	2.14	0.66
1:B:193:LYS:NZ	6:B:404:HOH:O	2.28	0.66
1:B:70:LEU:HD22	1:B:91:ILE:HD12	1.82	0.62
1:A:137:GLU:HB3	1:A:157:LEU:HD21	1.82	0.60
1:B:137:GLU:HB3	1:B:157:LEU:HD21	1.84	0.60
1:B:238:GLU:OE1	6:B:519:HOH:O	2.16	0.59
1:B:163:LYS:NZ	6:B:403:HOH:O	2.23	0.59
1:A:58:LYS:NZ	6:A:402:HOH:O	2.31	0.55
1:B:127:GLU:HB2	1:B:130:HIS:CB	2.37	0.54
1:B:99:PRO:HB2	1:B:183:GLY:HA3	1.91	0.52
1:B:112:LEU:HD21	1:B:211:LEU:HA	1.95	0.48
1:B:70:LEU:HD22	1:B:91:ILE:CD1	2.42	0.48
1:B:88:LYS:HE2	6:B:490:HOH:O	2.14	0.48
1:A:105:PHE:CD1	2:A:301:OFX:H19	2.50	0.47
1:A:235:VAL:HG22	1:B:239:LEU:HD23	1.97	0.47
1:B:127:GLU:HB2	1:B:130:HIS:HB3	1.97	0.47
1:A:21:TYR:CE2	1:A:28:SER:HA	2.50	0.47
1:A:91:ILE:HD13	1:A:134:TYR:CE2	2.50	0.46
1:A:61:ASN:HB3	1:A:63:ASN:OD1	2.16	0.45
2:A:301:OFX:H14	6:A:548:HOH:O	2.17	0.44

*Continued on next page...*

Continued from previous page...

Atom-1	Atom-2	Interatomic distance (Å)	Clash overlap (Å)
1:A:8:SER:CB	1:A:14:VAL:CG1	2.93	0.43
1:B:227:ASP:OD1	1:B:227:ASP:C	2.56	0.43
1:A:172:ASN:HA	6:A:623:HOH:O	2.19	0.43
1:A:204:SER:HA	1:B:201:ASP:O	2.19	0.42
1:A:97:LEU:HD22	1:A:138:GLU:HG2	2.02	0.42
1:B:199:LEU:HD11	1:B:225:PHE:CD1	2.55	0.42
1:A:235:VAL:HG22	1:B:239:LEU:CD2	2.50	0.41
1:B:36:SER:HA	1:B:53:THR:O	2.20	0.41
1:B:236:LYS:HE3	6:B:521:HOH:O	2.21	0.41
1:B:156:GLU:HG2	6:B:464:HOH:O	2.20	0.41
1:A:12:GLN:HG3	6:A:475:HOH:O	2.20	0.41
1:A:57:ILE:HG22	1:A:78:GLN:OE1	2.21	0.40

All (1) symmetry-related close contacts are listed below. The label for Atom-2 includes the symmetry operator and encoded unit-cell translations to be applied.

Atom-1	Atom-2	Interatomic distance (Å)	Clash overlap (Å)
6:A:450:HOH:O	6:B:436:HOH:O[17_555]	2.04	0.16

## 5.3 Torsion angles ⓘ

### 5.3.1 Protein backbone ⓘ

In the following table, the Percentiles column shows the percent Ramachandran outliers of the chain as a percentile score with respect to all X-ray entries followed by that with respect to entries of similar resolution.

The Analysed column shows the number of residues for which the backbone conformation was analysed, and the total number of residues.

Mol	Chain	Analysed	Favoured	Allowed	Outliers	Percentiles	
1	A	239/254 (94%)	234 (98%)	5 (2%)	0	100	100
1	B	240/254 (94%)	234 (98%)	6 (2%)	0	100	100
All	All	479/508 (94%)	468 (98%)	11 (2%)	0	100	100

There are no Ramachandran outliers to report.

### 5.3.2 Protein sidechains ⓘ

In the following table, the Percentiles column shows the percent sidechain outliers of the chain as a percentile score with respect to all X-ray entries followed by that with respect to entries of similar resolution.

The Analysed column shows the number of residues for which the sidechain conformation was analysed, and the total number of residues.

Mol	Chain	Analysed	Rotameric	Outliers	Percentiles	
1	A	228/240 (95%)	225 (99%)	3 (1%)	76	73
1	B	229/240 (95%)	226 (99%)	3 (1%)	76	73
All	All	457/480 (95%)	451 (99%)	6 (1%)	76	73

All (6) residues with a non-rotameric sidechain are listed below:

Mol	Chain	Res	Type
1	A	3	LYS
1	A	29	LYS
1	A	127	GLU
1	B	29	LYS
1	B	177	LYS
1	B	181	GLN

Some sidechains can be flipped to improve hydrogen bonding and reduce clashes. All (8) such sidechains are listed below:

Mol	Chain	Res	Type
1	A	66	ASN
1	A	86	ASN
1	A	92	ASN
1	A	164	ASN
1	B	66	ASN
1	B	86	ASN
1	B	92	ASN
1	B	136	GLN

### 5.3.3 RNA ⓘ

There are no RNA molecules in this entry.

## 5.4 Non-standard residues in protein, DNA, RNA chains [i](#)

There are no non-standard protein/DNA/RNA residues in this entry.

## 5.5 Carbohydrates [i](#)

There are no carbohydrates in this entry.

## 5.6 Ligand geometry [i](#)

Of 6 ligands modelled in this entry, 1 is monoatomic - leaving 5 for Mogul analysis.

In the following table, the Counts columns list the number of bonds (or angles) for which Mogul statistics could be retrieved, the number of bonds (or angles) that are observed in the model and the number of bonds (or angles) that are defined in the chemical component dictionary. The Link column lists molecule types, if any, to which the group is linked. The Z score for a bond length (or angle) is the number of standard deviations the observed value is removed from the expected value. A bond length (or angle) with  $|Z| > 2$  is considered an outlier worth inspection. RMSZ is the root-mean-square of all Z scores of the bond lengths (or angles).

Mol	Type	Chain	Res	Link	Bond lengths			Bond angles		
					Counts	RMSZ	$\# Z  > 2$	Counts	RMSZ	$\# Z  > 2$
2	0FX	A	301	-	29,37,37	1.65	7 (24%)	41,57,57	2.05	8 (19%)
3	1YJ	A	302	-	26,34,34	1.28	2 (7%)	28,47,47	1.55	4 (14%)
5	EDO	A	304	-	3,3,3	0.44	0	2,2,2	1.07	0
2	0FX	B	301	-	29,37,37	1.61	7 (24%)	41,57,57	1.58	7 (17%)
3	1YJ	B	302	-	26,34,34	1.32	1 (3%)	28,47,47	2.32	9 (32%)

In the following table, the Chirals column lists the number of chiral outliers, the number of chiral centers analysed, the number of these observed in the model and the number defined in the chemical component dictionary. Similar counts are reported in the Torsion and Rings columns. '-' means no outliers of that kind were identified.

Mol	Type	Chain	Res	Link	Chirals	Torsions	Rings
2	0FX	A	301	-	-	0/17/53/53	0/3/3/3
3	1YJ	A	302	-	-	0/16/31/31	0/3/3/3
5	EDO	A	304	-	-	0/1/1/1	0/0/0/0
2	0FX	B	301	-	-	0/17/53/53	0/3/3/3
3	1YJ	B	302	-	-	0/16/31/31	0/3/3/3

All (17) bond length outliers are listed below:

Mol	Chain	Res	Type	Atoms	Z	Observed(Å)	Ideal(Å)
2	B	301	0FX	C4G-N4A	-3.62	1.41	1.47
2	B	301	0FX	P-O1P	-3.54	1.39	1.54
2	A	301	0FX	C61-N11	-3.24	1.30	1.35
2	B	301	0FX	C61-N11	-3.23	1.30	1.35
2	A	301	0FX	P-O1P	-3.23	1.41	1.54
2	A	301	0FX	O3-C3	-2.78	1.37	1.43
2	B	301	0FX	O3-C3	-2.67	1.37	1.43
2	A	301	0FX	O4-C4	-2.66	1.38	1.45
2	A	301	0FX	P-O2P	-2.47	1.42	1.51
2	B	301	0FX	P2-O3P	-2.22	1.43	1.51
2	A	301	0FX	O5G-C5G	-2.20	1.39	1.44
2	B	301	0FX	O4-C4	-2.11	1.40	1.45
2	B	301	0FX	O41-C41	2.50	1.30	1.24
3	A	302	1YJ	C4-N3	2.55	1.37	1.33
2	A	301	0FX	O41-C41	3.03	1.32	1.24
3	A	302	1YJ	O4-C4	5.04	1.36	1.24
3	B	302	1YJ	O4-C4	5.19	1.37	1.24

All (28) bond angle outliers are listed below:

Mol	Chain	Res	Type	Atoms	Z	Observed(°)	Ideal(°)
2	A	301	0FX	C51-C41-N31	-5.53	118.98	125.14
2	B	301	0FX	C51-C41-N31	-5.02	119.54	125.14
3	B	302	1YJ	O11-C11-C1'	-4.23	113.74	120.97
3	B	302	1YJ	N3-C2-N1	-3.37	120.00	125.53
2	A	301	0FX	O3G-C3G-C2G	-2.99	103.60	110.34
2	A	301	0FX	O5G-C1G-O1G	-2.44	108.14	111.36
2	A	301	0FX	P-OPP-P2	-2.29	126.29	132.73
2	B	301	0FX	C3G-C4G-C5G	-2.17	106.30	110.83
3	A	302	1YJ	C9-C6-N5	-2.11	104.98	109.34
3	B	302	1YJ	O11-C11-N	-2.02	118.80	122.44
2	A	301	0FX	C5A-C51-C61	2.05	122.75	118.62
2	B	301	0FX	O4P-P2-O3P	2.06	123.71	112.53
3	A	302	1YJ	C2-N1-C8A	2.18	119.45	114.54
3	A	302	1YJ	N2-C2-N3	2.32	121.04	117.20
3	B	302	1YJ	C2-N1-C8A	2.62	120.43	114.54
2	B	301	0FX	O5G-C5G-C6G	2.65	112.44	106.64
2	A	301	0FX	O4-C1-N11	2.78	112.53	107.72
3	B	302	1YJ	CG-CB-CA	2.84	118.76	112.99
2	B	301	0FX	O4-C1-N11	2.96	112.84	107.72
2	B	301	0FX	O1P-P-OPP	3.08	119.05	105.09
3	B	302	1YJ	N2-C2-N3	3.50	123.00	117.20
2	A	301	0FX	O1P-P-OPP	3.64	121.61	105.09

*Continued on next page...*

*Continued from previous page...*

Mol	Chain	Res	Type	Atoms	Z	Observed(°)	Ideal(°)
3	B	302	1YJ	C4-N3-C2	3.97	121.45	115.94
2	B	301	0FX	C41-N31-C21	4.03	118.73	115.25
3	B	302	1YJ	C4-C4A-C8A	4.73	118.85	114.56
3	A	302	1YJ	C4-C4A-C8A	5.35	119.40	114.56
3	B	302	1YJ	C1'-C11-N	5.91	127.46	116.93
2	A	301	0FX	C41-N31-C21	7.83	122.02	115.25

There are no chirality outliers.

There are no torsion outliers.

There are no ring outliers.

1 monomer is involved in 2 short contacts:

Mol	Chain	Res	Type	Clashes	Symm-Clashes
2	A	301	0FX	2	0

## 5.7 Other polymers [i](#)

There are no such residues in this entry.

## 5.8 Polymer linkage issues [i](#)

There are no chain breaks in this entry.

## 6 Fit of model and data [i](#)

### 6.1 Protein, DNA and RNA chains [i](#)

In the following table, the column labelled '#RSRZ> 2' contains the number (and percentage) of RSRZ outliers, followed by percent RSRZ outliers for the chain as percentile scores relative to all X-ray entries and entries of similar resolution. The OWAB column contains the minimum, median, 95<sup>th</sup> percentile and maximum values of the occupancy-weighted average B-factor per residue. The column labelled 'Q< 0.9' lists the number of (and percentage) of residues with an average occupancy less than 0.9.

Mol	Chain	Analysed	<RSRZ>	#RSRZ>2	OWAB(Å <sup>2</sup> )	Q<0.9
1	A	241/254 (94%)	-0.52	0 <b>100</b> <b>100</b>	10, 17, 32, 55	0
1	B	241/254 (94%)	-0.34	1 (0%) <b>93</b> <b>93</b>	11, 22, 40, 57	0
All	All	482/508 (94%)	-0.43	1 (0%) <b>95</b> <b>95</b>	10, 20, 38, 57	0

All (1) RSRZ outliers are listed below:

Mol	Chain	Res	Type	RSRZ
1	B	178	LEU	2.4

### 6.2 Non-standard residues in protein, DNA, RNA chains [i](#)

There are no non-standard protein/DNA/RNA residues in this entry.

### 6.3 Carbohydrates [i](#)

There are no carbohydrates in this entry.

### 6.4 Ligands [i](#)

In the following table, the Atoms column lists the number of modelled atoms in the group and the number defined in the chemical component dictionary. LLDF column lists the quality of electron density of the group with respect to its neighbouring residues in protein, DNA or RNA chains. The B-factors column lists the minimum, median, 95<sup>th</sup> percentile and maximum values of B factors of atoms in the group. The column labelled 'Q< 0.9' lists the number of atoms with occupancy less than 0.9.

Mol	Type	Chain	Res	Atoms	RSCC	RSR	LLDF	B-factors(Å <sup>2</sup> )	Q<0.9
2	0FX	A	301	35/35	0.95	0.11	<b>3.81</b>	10,18,37,44	0
3	1YJ	A	302	32/32	0.93	0.13	<b>3.29</b>	12,26,63,69	0

*Continued on next page...*



*Continued from previous page...*

Mol	Type	Chain	Res	Atoms	RSCC	RSR	LLDF	B-factors( $\text{\AA}^2$ )	Q<0.9
3	1YJ	B	302	32/32	0.88	0.15	2.41	20,42,73,78	0
2	0FX	B	301	35/35	0.95	0.10	1.38	16,22,38,43	0
5	EDO	A	304	4/4	0.94	0.08	0.45	28,28,29,31	0
4	CL	A	303	1/1	0.99	0.18	-	25,25,25,25	1

## 6.5 Other polymers [i](#)

There are no such residues in this entry.